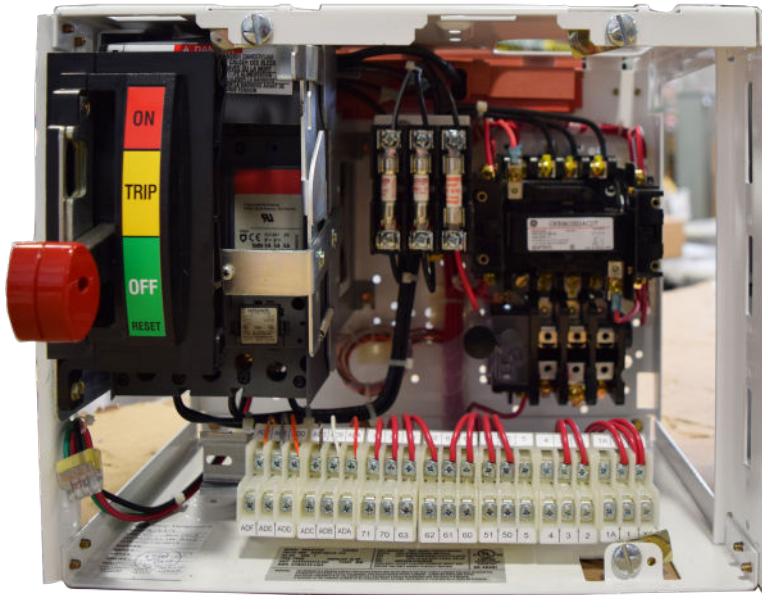




MCC BUCKETS

Quick Ship Custom
Electrical Controls



*Spike Electric Controls is a value added custom MCC Bucket manufacturer.
We are not a reseller of any loose MCC components or empty buckets.*



Manufacturers:

Eaton

- Freedom 2100
- Freedom Unitrol
- 9800 Unitrol
- F10 Unitrol
- Advantage 2100
- Five Star Series 2100
- 11-300
- Type W

General Electric

- 7700 Series
- 8000 Series
- E9000 Evolution

Square D

- Model 3
- Model 4
- Model 5
- Model 6

Allen Bradley

- Center Line 2100

Siemens

- Allis Chalmers Marq 21
- Allis Chalmers Marq 1
- Allis Chalmers Marq 2
- Model 90
- Model 95
- TIASTAR & 95+
- System 89
- Class 89

Note: NEMA size and spacing can vary depending on starter unit. Refer to the catalogs for each manufacture.

Feeder Units:

- Breaker: 15–600 Amps
- Fusible: 30–600 Amps

New Units Supplied With

- New Stabs
- New Steel Wrapper
- New Door
- Mounting Hardware

Options Obsolete Remanufactured Units

- Pushbuttons



Custom Bucket Types

- MCCBuckets
- MCC Repair and Maintenance
- MCC Testing
- MCC Bucket Conversion *Upgrading from Motor Starters to VFD's or Soft Starters*
- Mcc New and Obsolete Component Replacement
- Direct Replacements for Obsolete MCC
- Nema Size 00-6
- Fvnr Starter Buckets
- IEC Starter Buckets
- FVR Starter Buckets
- VFD Buckets
- Soft Start Buckets
- Contactor Type Buckets
- Fused Feeder Buckets
- Breaker Feeder Buckets
- Pilot Lights
- Selector Switches and more...

*Spike Electric Controls is a value added custom MCC Bucket manufacturer.
We are not a reseller of any loose MCC components or empty buckets.*





MCC BUCKETS

Quick Ship Custom
Electrical Controls



Ordering Information / Part Number Example SFZ A1003 E A S C SP10 SP11

SFZ

MCC Type Catalog Codes

SFZ	Freedom 2100
SFS	Series 2100/5 Star
SFD	Freedom Unitrol
SFR	F10 Unitrol
SFT	Type W
SFN	9800 Unitrol
SFJ	11-300
SFM	IT
SSZ	Flashgard
GD	Ite 5600
GE9000	GE 9000 Evolution
GE8000	GE 7700/8000
GE7098	GE 7098
AB2100	Allen-Bradley Centerline 2100
AB789	Allen-Bradley 789
FP	Federal Pacific
PW	Powell
SQ6	Square D Model 6
SQ5	Square D Model 5
SQ4	Square D Model 4
SQ3	Square D Model 3
ST	Siemens Tiastar
S95+	Siemens Model 95+
S95	Siemens Model 95
S90	Siemens Model 90
F89	Furnas System 89
SA21	Siemens-Allis Marq 21
ACM2	Allis-Chalmers Mark 2
I56	Ite Gould 5600
FC89	Furnas Class 89
ACM1	Allis-Chalmers Mark 1
I96	ITE Gould 9600
SV	Sylvania/Clark

A1003

Service Voltage

A	120V
B	208V
C	240V
D	380V
E	480V
F	575V

A

Control Voltage

A	120V
B	208V
C	240V
D	380V
E	480V
F	575V

S

Space Option

S	Standard
C	Compact
O	Oversized

C

CPT

C	CPT
S	Separated Source

SP10 SP11

Starter Type

FNVR HMCP

A1003	Nema Size 1, 3 amp
B1007	Nema Size 1, 7 amp
C1015	Nema Size 1, 15 amp
D1030	Nema Size 1, 30 amp
E2050	Nema Size 2, 50 amp
F3100	Nema Size 3, 100 amp
G4150	Nema Size 4, 150 amp
H5250	Nema Size 5, 250 amp

FVR HMCP

1003A	Nema Size 1, 3 amp
1007B	Nema Size 1, 7 amp
1015C	Nema Size 1, 15 amp
1030D	Nema Size 1, 30 amp
2050E	Nema Size 2, 50 amp
3100F	Nema Size 3, 100 amp
4150G	Nema Size 4, 150 amp
5250H	Nema Size 5, 250 amp

FNVR FUSED DIS

H1003	Nema Size 1, 3 amp
I1007	Nema Size 1, 7 amp
J1015	Nema Size 1, 15 amp
K1030	Nema Size 1, 30 amp
L2050	Nema Size 2, 50 amp
M3100	Nema Size 3, 100 amp
N4150	Nema Size 4, 150 amp
O5250	Nema Size 5, 250 amp

FVR FUSED DIS

1003H	Nema Size 1, 3 amp
1007I	Nema Size 1, 7 amp
1015J	Nema Size 1, 15 amp
1030K	Nema Size 1, 30 amp
2050L	Nema Size 2, 50 amp
3100M	Nema Size 3, 100 amp
4150N	Nema Size 4, 150 amp
5250O	Nema Size 5, 250 amp

FEEDERS (Single-Sf/ Dual-Df)

SF	DF	
SF15	DF15	15 amp
SF20	DF20	20 amp
SF25	DF25	25 amp
SF30	DF30	30 amp
SF35	DF35	35 amp
SF40	DF40	40 amp
SF45	DF45	45 amp
SF50	DF50	50 amp
SF60	DF60	60 amp
SF70	DF70	70 amp
SF80	DF80	80 amp
SF90	DF90	90 amp
SF100	DF100	100 amp
SF125	DF125	125 amp
SF150	DF150	150 amp
SF175	DF175	175 amp
SF200	DF200	200 amp
SF225	DF225	225 amp
SF250	DF250	250 amp
SF300	DF300	300 amp
SF350	DF350	350 amp
SF400	DF400	400 amp
SF600	DF600	600 amp

Modification

SB10	Breaker Shunt Trip—120v
SB11	Breaker Auxiliary Switch—1no/1nc
SB19	Breaker Auxiliary Switch—2no/2nc
SC10	Control Fuse Wired for Separate Source in Lieu Of Cpt
SC11	Control Fuse/Disconnect For Separate Source In Lieu of Cpt
SC12	Cpt 100va for Size 1 & 2 Starters, Fused
SC13	Cpt 150va fFor Size 3 & 4 Starters, Fused
SC18	Full Capacity Cpt for Size 5 Starters, Fused
SM12	Mini Elapsed Time Meter
SM16	Iq-200 Meter with 3 Cts
SO19	Overload Relay Heater/Heater Pack
SO20	Cep7 Solid State Overload Relay—Size 1
SP10	Red 'Run' Light
SP11	Green 'Stopped' Light
SP15	Red 'Run' Push-To-Test Light
SP16	Green 'Stopped' Push-To-Test Light
SP20	Special Function Light
SP32	'Start/Stop' Pushbutton
SP35	'On/Off' Pushbutton
SP36	'Forward/Reverse/Stop' Pushbutton
SP38	'Fast/Off/Slow' Pushbutton
SP41	Special Function Pushbutton
SP50	'On-Off' Selector Switch
SP53	'Start-Stop' Selector Switch
SP55	'Forward-Reverse' Selector Switch
SP56	Special Function 2-Position Selector Switch
SP57	'Hand-Off-Auto' Selector Switch
SP58	'Local-Off-Remote' Selector Switch
SP59	'Fast-Off-Slow' Selector Switch
SP60	'High-Off-Low' Selector Switch
SP61	Special Function 3-Position Selector Switch
SR23	D15 4-Pole Control Relay
SS11	1no-1nc Starter Auxiliary Contacts
SS22	2no-2nc Starter Auxiliary Contacts
ST9	Pull-Apart Type Terminal Blocks (Standard On All Vintages Except Type W And 11-300)
SU10	Surge Suppressor On Coil
SU11	Type Sis Control Wire
SU14	Wiremarkers—Sleeve Type On All Control

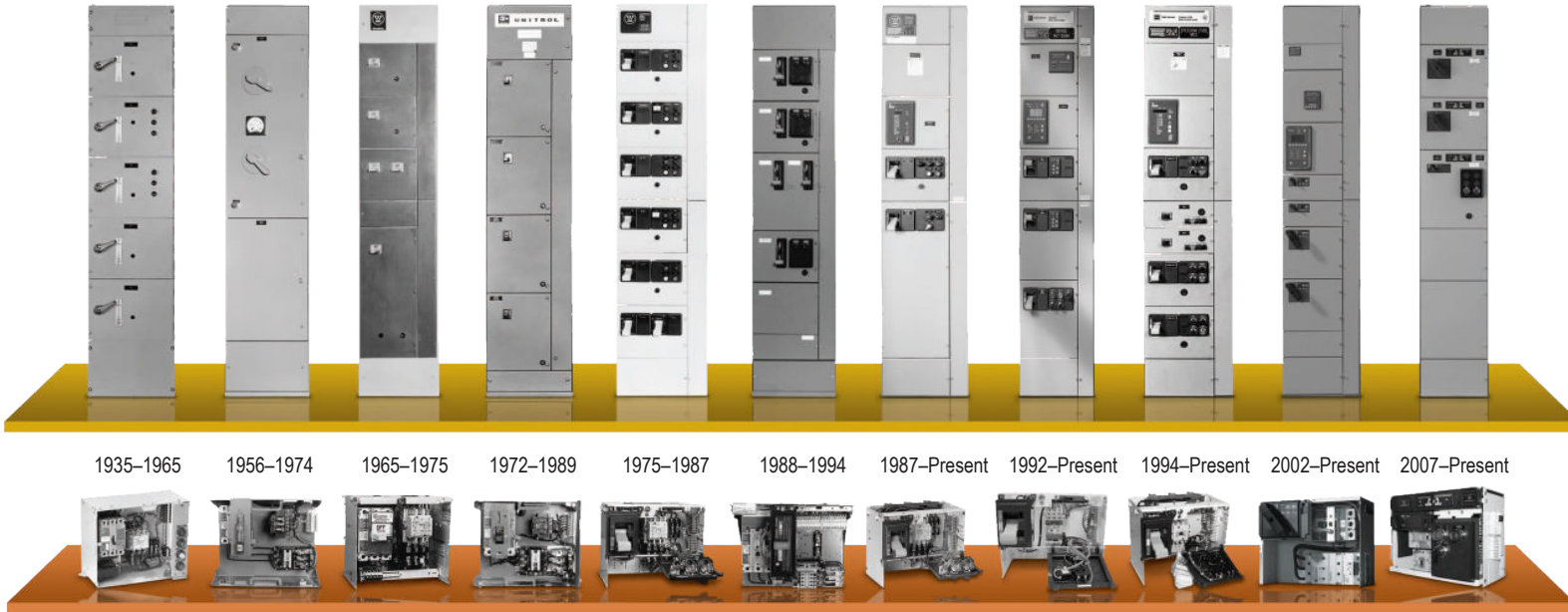


MCC BUCKETS

Quick Ship Custom
Electrical Controls



Motor Control Center Solutions:



1935–1965 1956–1974 1965–1975 1972–1989 1975–1987 1988–1994 1987–Present 1992–Present 1994–Present 2002–Present 2007–Present

Specifications

Description	Westinghouse® 11-300	Cutler-Hammer® HammerT®		Cutler-Hammer F10 Unitrol	Westinghouse 5 Star	Cutler-Hammer Freedom Unitrol
Starter Type	11-200 Life-Line Type N	3 Star	A200 or 11-200	Citation	A200	Freedom Series
Breaker Type	F/FA	FA	FB/MCP/FA	MCP/FS/FB/FH/FA	Non-Series CT MCP/FB	HMCP/HFD/FS/FH/FDC
Door Width	20"	19 3/8"	13 3/8"	14 3/4" With Wireway 19 1/2" Without Wireway	15 5/8"	15 1/2"
Bucket Width	15 3/4"	16 1/8"	11 3/4"	14"	13 3/4"	13 7/8"
Vertical Space Increments	9 1/3", 14" Increments	9 1/3", 14" Increments	6" Increments	6" Increments	6" Increments	6" Increments
Paint	ANSI 61	ANSI 49	ANSI 49	ANSI 49	ANSI 70	ANSI 49
Handle Mechanism Type	Rotary Operator	Rotary Operator	Slider Type	Slider Type	Lever Type	Slider Type
FlashGard Upgrade Available	No	No	No	No	Yes	No

Specifications Cont...

Description	Westinghouse Series 2100	Cutler-Hammer Advantage	Freedom 2100	IT. MCC	FlashGard
Starter Type	A200	Advantage	Freedom	IT.	Freedom
Breaker Type	Series C HMCP/HFD	Series C HMCP/HFD	HMCP/HFD	HMCP/HFD	HMCP/HFD
Door Width	15 5/8"	15 5/8"	15 5/8"	15 5/8"	15 5/8"
Bucket Width	13 3/4"	13 3/4"	13 3/4"	13 3/4"	13 3/4"
Vertical Space Increments	6" Increments	6" Increments	6" Increments	6" Increments	6" Increments
Paint	ANSI 61	ANSI 61	ANSI 61	ANSI 61	ANSI 61
Handle Mechanism Type	Lever Type	Lever Type	Lever Type	Rotary Operator	Rotary Operator
Flashgard Upgrade Available	Yes	Yes	Yes	Yes	Yes

Other Manufacturers' Units:



ITE/Gould® Square D®
5600 Series Model 5/Model 6
1957–1976 1992–Present



General Electric® Siemens®/FurnasT
7700/8000 Series 89
1975–Present 1979–2001



Allen-Bradley® FPE® 5325/5320
Centerline 1966-1978
Series K and later
1971–Present



MCC BUCKETS

Quick Ship Custom
Electrical Controls



Model 6 Low Voltage Motor Control Center

Save engineering time and reduce costs with RapidSource.



Low Voltage MCC Offer Overview:

- Enclosure Types: NEMA Type 1, Type 1A (gaskets), Type 12 and Type 3R
- Voltage Rating: 208 through 600 Volts; 3 phase; 3 or 4 wire
- Horizontal Bus Rating: 600, 800, 1200, 1600, 2000 and 2500 amps
- Vertical Bus Rating: 300 and 600 amps
- Bus Withstand Rating 42kA, 65kA, 85kA, and 100kA
- Main Circuit Breaker, Fused Switch or Main Lug Only
- Metering, Surge Protective Devices and Communications
- Circuit Breakers and Fusible Switches
- Starters (FVR, FVNR and RVAT)
- AC Drives and Soft Starters
- Distribution Panelboards and Transformers
- Automatic Transfer Switches: 600A and 800A, 480V 3 phase, 3 or 4 wire
- User Defined Specialty Compartments (Automation, Communications, etc.)
- Arc Resistant MCCs
- Closed Door Racking

Faster Project Turn Around:

RapidSource offers a more responsive, faster and flexible solution for your business.

- Shorter Equipment Lead Times
- Fast and easy quotation with online configuration tools
- Order and delivery tracking
- On-demand factory-approved drawings
- Product information
- Offer meets/exceeds industry standards (safety, reliability and innovation)
- Personalized support and news
- Technical Support
- Manufacturer training

Expedite Your Order:

RapidSource was specifically designed to address the challenges faced by System Integrators, Panel Builders, and OEMs.

Using our system for your motor control center project provides a simplified ordering process of complete Model 6 MCC lineups with premier 4 week shipment for most of the offer covered by the program.

This Could Be Your Success Story...

Bid Project:

You're working on an estimate for an open bid project that includes MCCs. With the online selector tool you are able to use RapidSource for your order and select most of the specified MCC features. The online selector tool allows you to quickly respond to addendum changes and provide an accurate quote. By doing some of the MCC control design and shop drawings in-house you are able to provide a competitive bid and increase your scope of supply.

Add Value:

You receive notice to proceed and you are able to quickly modify the MCC's pre-engineered drawings downloaded from the selector in order to provide shop drawings for approval. You've eliminated the time needed previously for transferring information to and from the manufacturer's engineering team and the time required for custom engineering of the MCC. By making minor changes in-house to respond to shop drawing comments, you get customer approval in record time!

Delivery:

Upon receiving shop drawing approval from your customer, you release the order for manufacture. Your RapidSource order is quickly assembled, tested, and shipped within 4 weeks!

The MCC arrives at your shop to receive some additional control and network communication modifications. You quickly turn these around while ensuring the MCC integrates seamlessly with the other controls, software and communications you are providing. You ship the MCC to site ahead of schedule eliminating business risk and making your customers happy!

Stay Connected. Optimize:

It's time to start up your controls and the MCC onsite. Your previous familiarity with the MCC and integration with your other controls allows you to install and startup the equipment smoothly and in record time! You're now a preferred supplier of the customer!

