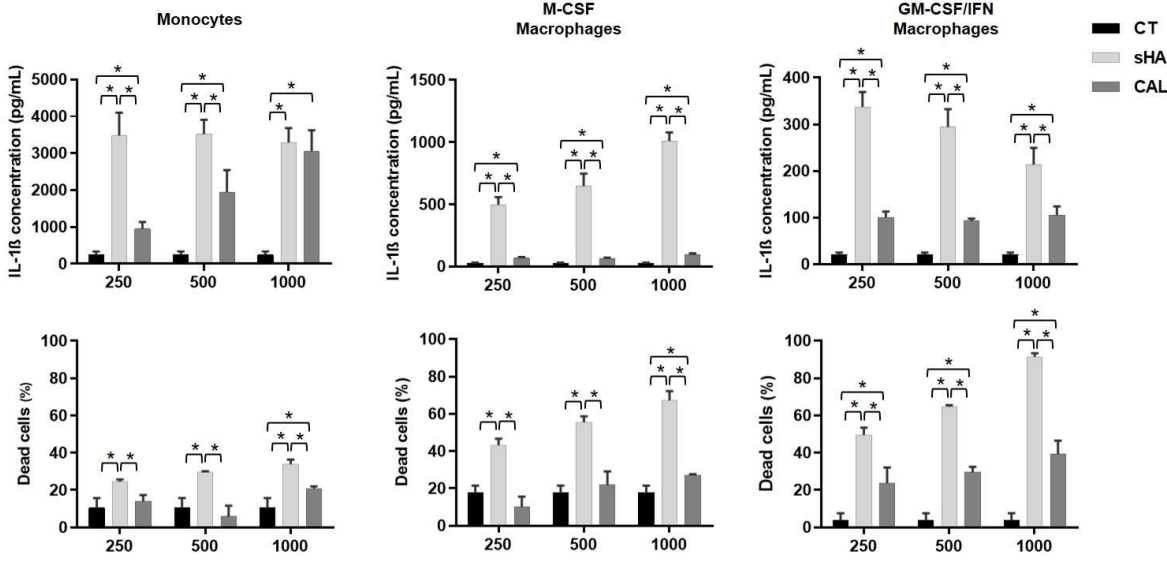
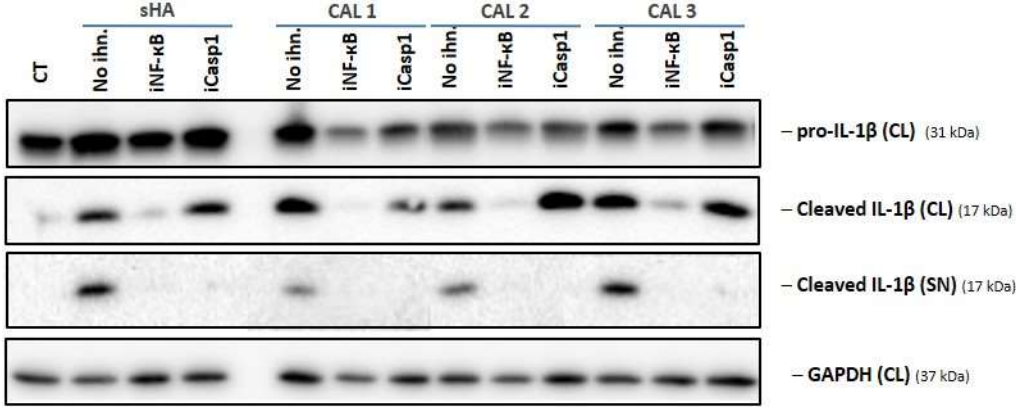


Supplementary figure S1. IL-1 β release after 6h stimulation of CD14+ monocytes, MCSF-Macrophages, GM-CSF/IFN γ -Macrophages by crystals at 250, 500 and 1000 ng/ml in presence of LPS (lipopolysaccharide) and parallel cell death rate. sHA= synthetic hydroxyapatite, CAL = human calcification CT= control group without crystal; LPS= lipopolysaccharide. n=3. * p \leq 0,05



Supplementary figure S2. Western Blot raw images of sHA (positive control) and three patients. Cleaved IL-1 β was studied in cellular lysates (CL) and in supernatants (SN). iNF- κ B= NF- κ B inhibitor; iCasp1= caspase-1 inhibitor; inh= inhibitor; sHA= synthetic hydroxyapatite; CAL= human calcification; CT = control condition without crystals.



Supplementary table 1. Primers used for quantitative Polymerase Chain Reaction.

Gene name	Forward	Reverse
<i>Human Interleukin-1β</i>	CCGGGACTCACAGCAAAA	GGACATGGAGAACACCACTTG
<i>Human IL-1 receptor antagonist</i>	TGGGATGTTAACCAGAAGAC	TCTCATCACCAGACTTGACA
<i>Human Interleukin-6</i>	TCCACAAGCGCCTTCGGTCCAG	CTCAGGGCTGAGATGCCGTCG
<i>Human Interleukin-18</i>	GACCAAGGAAATCGGCCTCTA	ACCTCTAGGCTGGCTATCTTTATACATAC
<i>Human NFκB</i>	ATAATGCCTTCCGGCTGAGT	CCTCCACCAGCTCTCTGACT
<i>Human TGFβ</i>	GAGCCCAAGGGCTACCAT	GGTTATGCTGGTTGTACAGG
<i>Human TNFα</i>	CAGCCTCTTCTCCTTCCTGAT	GCCAGAGGGCTGATTAGAGA
<i>Human HPRT</i>	TGACCTTGATTTATTTTGCATACC	CGAGCAAGACGTTTCAGTCCT
<i>Murine Interleukin-1β</i>	TACCTGTGGCCTTGGGCCTCAA	GCTTGGGATCCACACTCTCCAGCT
<i>Murine Interleukin-6</i>	TAGTCCTTCTACCCCAATTTCC	TTGGTCCTTAGCCACTCCTTC
<i>Murine TNFα</i>	GGGTGATCGGTCCCCAAAGGGA	TGGTTTGCTACGACGTGGGCTAC
<i>Murine HPRT</i>	TCCTCCTCAGACCGCTTTT	CCTGGTTCATCATCGCTAATC