



Can Am Flatbed Installation

Supplied Hardware:

- 6x 5/16 bolts 1 inches long
- 6x 5/16 Flat Washers
- 6x 5/16 Lock Washers
- 6x 1/4 Bolts 1 inches long
- 14x 1/4 Flat Washers
- 10x 1/4 Nyloc Nuts
- 2x Latches
- 4x 1/4 inch Bolts 2 1/4 inches long
- 2x Flatbed Pivot Brackets
- 3x Bed Rails

Required Tools

- 1/2 inch Socket
- 1/2 Wrench
- 13mm Socket
- 10mm Socket
- Drill
- 1/4 inch Drill Bit

Now that you have familiarized yourself with the hardware and the tools you're going to need, we can begin installing, should take 45-60 min.

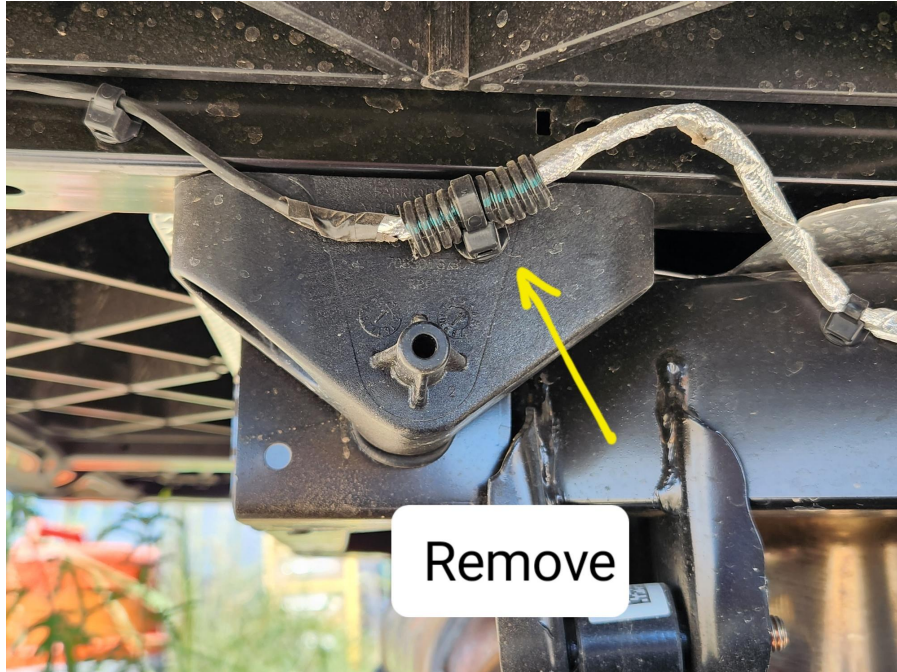
1. First thing you need to do is remove the factory bed.
2. Remove the rear taillights from the bed and disconnect the wiring harness.





3. Remove the wiring harness from the bed until you reach the bed pivot bracket. Note: keep all tree zip tie holders on the harness, they will be used later for routing wire harness.

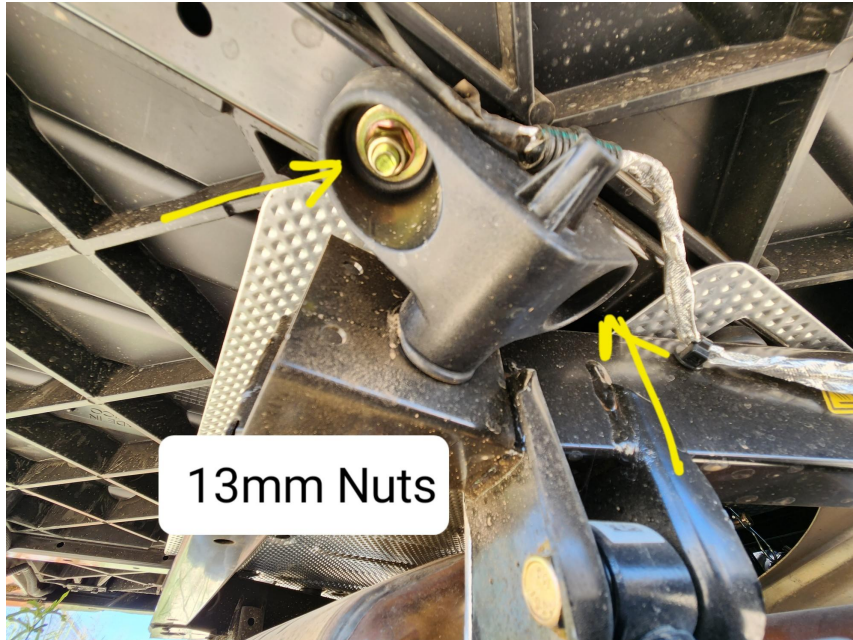




4. Once the harness is removed from the bed, tilt the bed back and remove the gas shock.



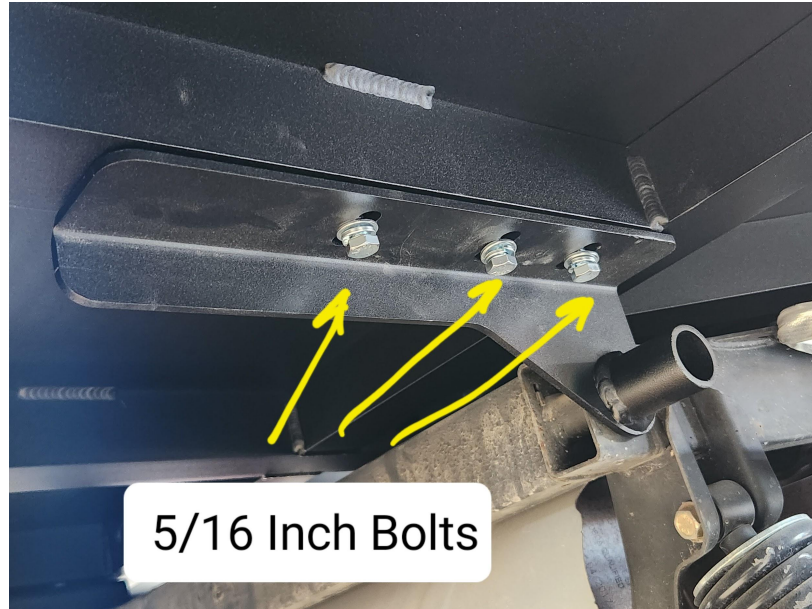
5. Now remove the four 13mm nuts holding the bed to the pivot bracket.



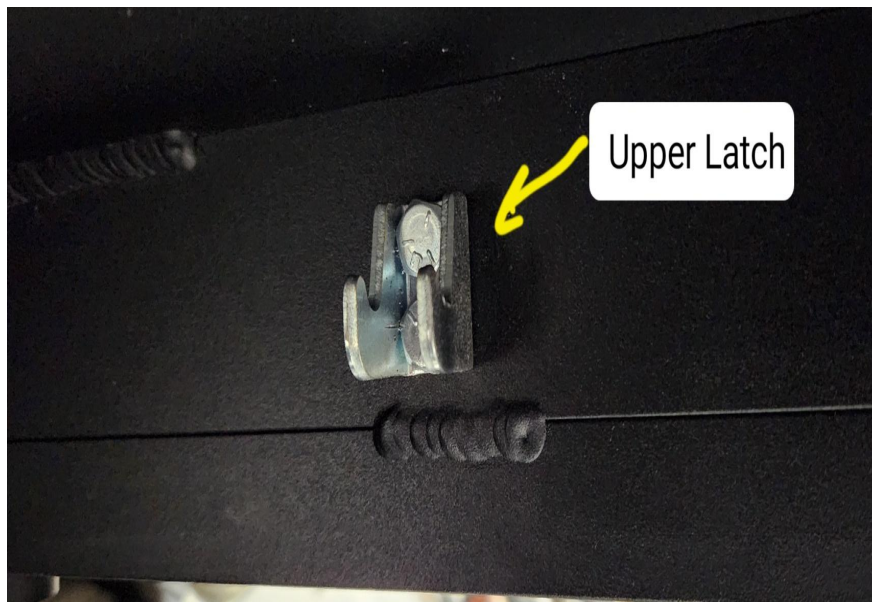
6. With the help of another person, lift the bed up and out of the way.
7. Now install the new flatbed pivot brackets. Note: Install brackets with the flat side to the inside.



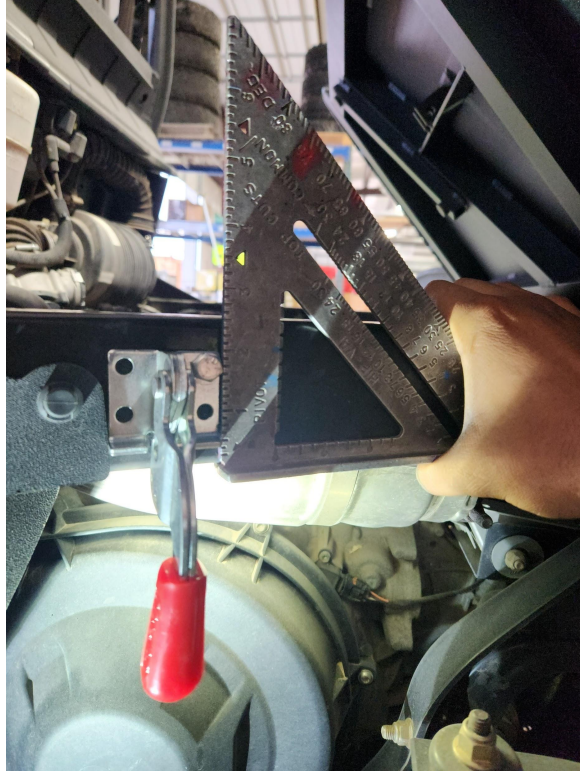
8. With two other people lift the flatbed onto the unit and line up the mounting holes on the flatbed with the holes on the previously installed brackets.
9. Using the supplied 5/16 inch bolts, lock washers and flat washers bolt the bed onto the bracket.



10. With the bed bolted down, locate the upper latch hook on the lower side of the bed.



11. Right underneath the upper latch hook you're going to install the lower main latch.
12. Line up the latch as close as you can and mark one of the holes.
13. Drill a $\frac{1}{4}$ inch hole where previously marked.
14. Using the supplied 2 inch long $\frac{1}{4}$ inch bolt, mount the latch to the bed frame of the unit.



15. Repeat steps 13 and 14 until all holes are drilled and bolts are installed.



16. With the latch now installed, rout the wiring harness along the bed and connect to the tail lights on the flatbed.



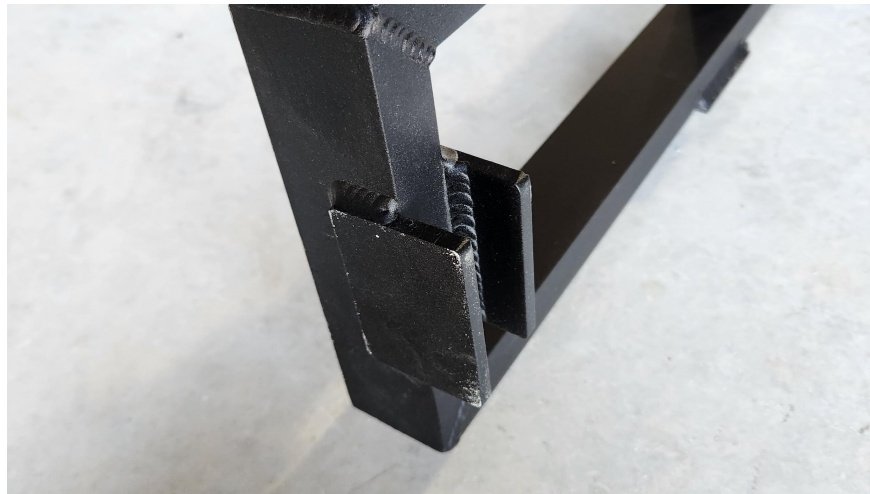
17. Now you're going to drill a 1/4 inch hole inline with each zip tie tree and install.
18. Reinstall gas shock



19. Next we will install the bed rails using the 1/4 inch bolts, washers and nyloc nuts.
20. Place the side rails on first with the brackets on the inside of the outermost rail on the bed.



21. Line up each hole and install the ¼ inch bolts, washers and nyloc nuts.
22. Once both sides are on you can install the rear by placing it in the slots on each side of the side rails.



- 23.
24. Tighten all hardware and make sure all taillight connections are installed correctly.

You are good to go! Enjoy your Ranch Armor Polaris Flatbed. We appreciate your business very much!

If you have any questions you are always welcome to reach out to us. Visit <http://www.RanchArmorUTV.com> for more Polaris accessories.