

FLEXIBLE STACKING

INTERCONNECT SOLUTIONS GUIDE

FLEXIBLE STACKING INTERCONNECT SOLUTIONS

Samtec offers the industry's largest variety of board stacking interconnects, with more ways to connect two or more PCBs than any other connector company. This incredible design flexibility is combined with full engineering support, online tools and an unmatched service attitude in order to find the right solution – standard or custom – for any application.

Most flexible stacking solutions are available through the Reserve® program. With over 200,000 of Samtec's most popular connectors and cables, these eligible products are guaranteed to ship in 1-day.

Reserve®

DESIGN FLEXIBILITY

Choice of pitch, density, stack height, orientation, standard or modified

Board-to-board and IDC cable assemblies

Rugged, high-reliability contact systems

CUSTOMIZABLE

Mix-and-match headers and sockets for the right solution

Express modifications at standard pricing cost

Engineered custom parts also available

SUPPORT & TOOLS

Reserve® - 200,000+ products ship in 1-day

Flexible Stacking Solutionator® - Build a Mated Set®

Free test reports, 3D models, Break Out Region

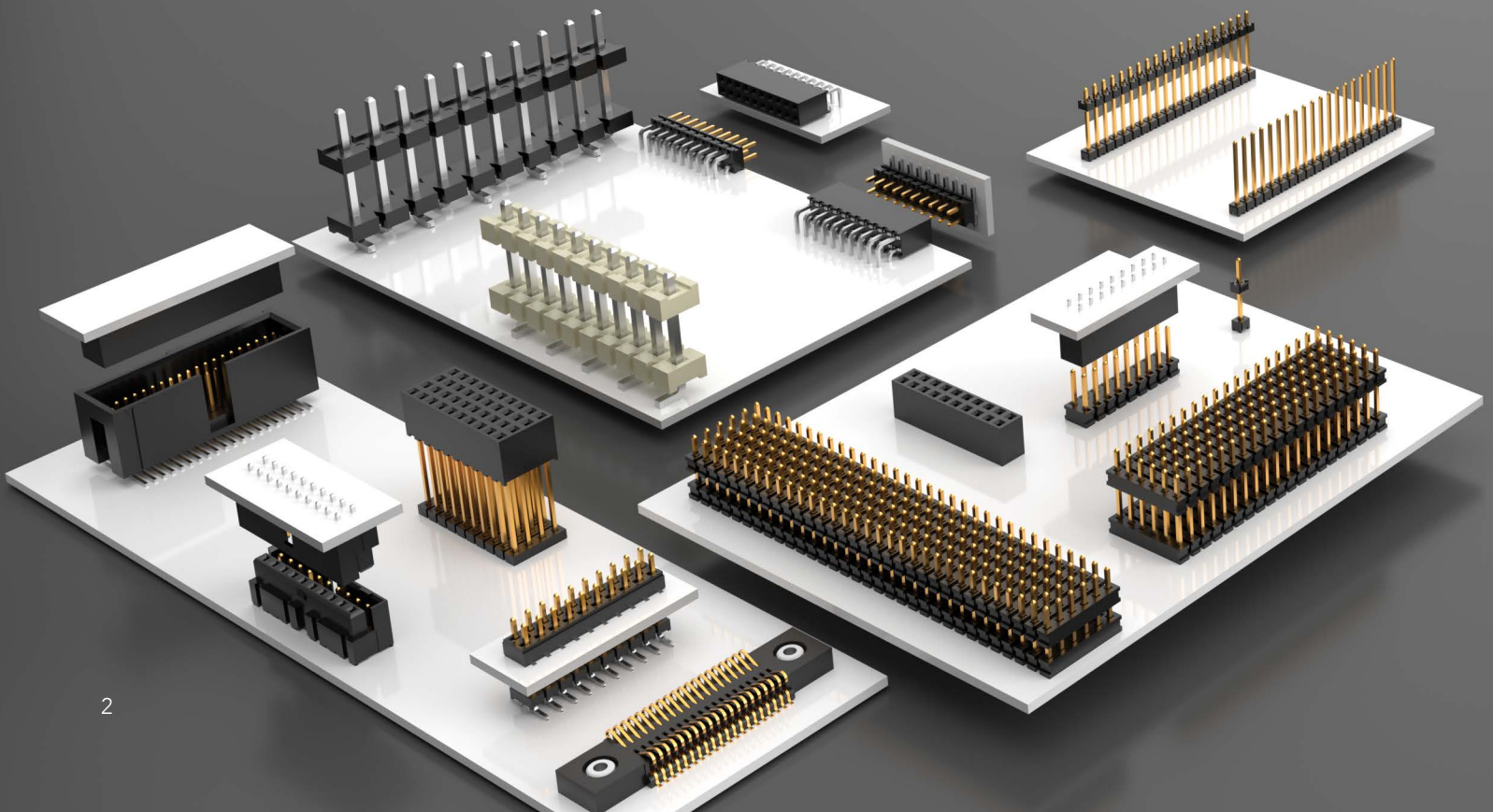
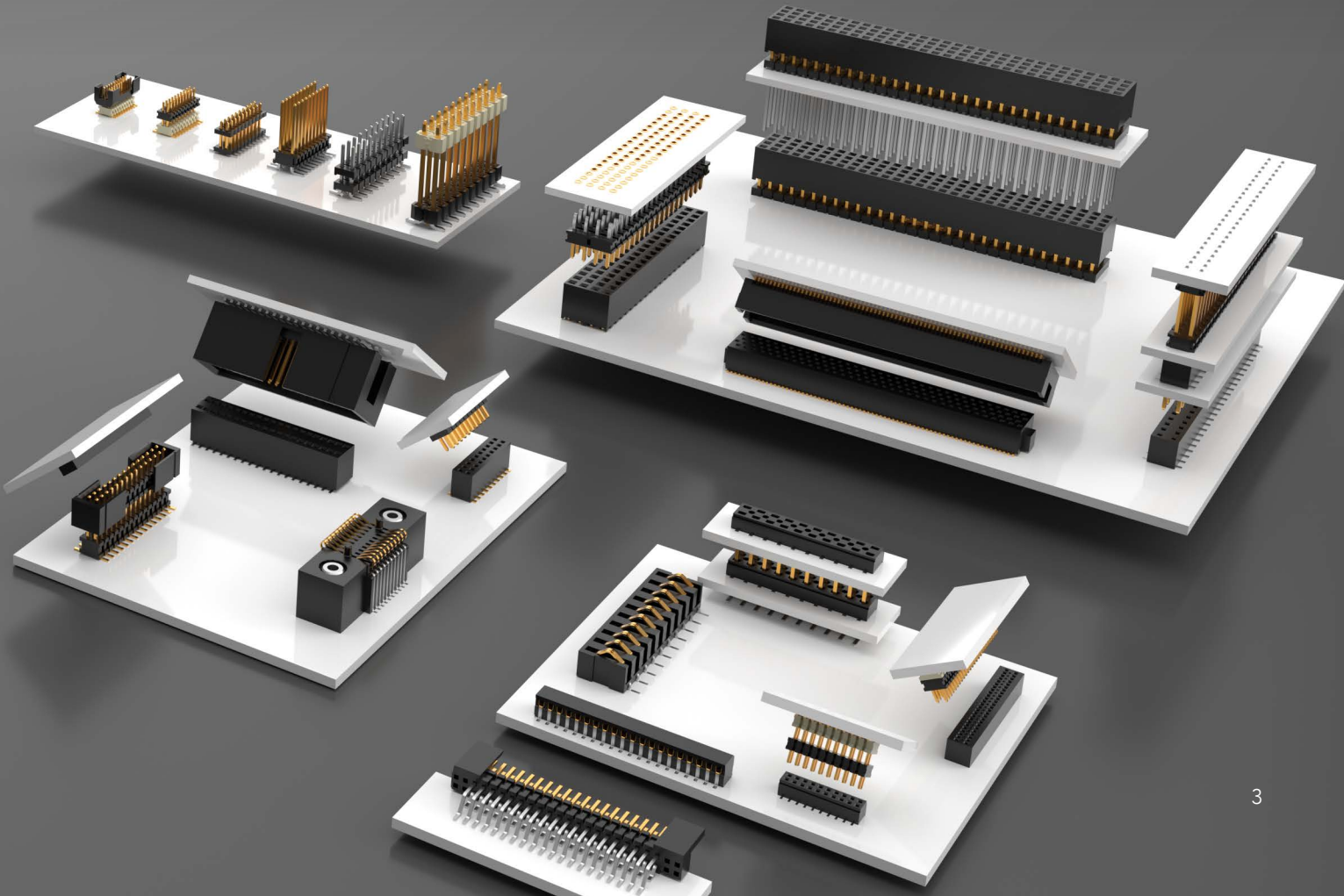
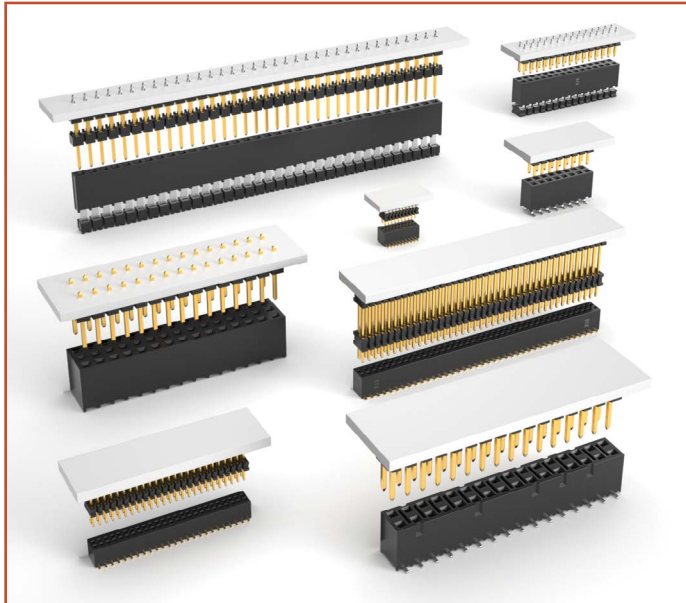


TABLE OF CONTENTS

FLEXIBLE STACKING PRODUCT OVERVIEW	4-5
DESIGN FLEXIBILITY/VARIETY OF OPTIONS	6-7
VERTICAL PROFILES	8-9
RIGHT-ANGLE PROFILES	10
ALTERNATE ORIENTATIONS	11
IDC CABLE SYSTEMS	12
CUSTOM SOLUTIONS	13
FLEXIBLE STACKING REFERENCE CHART.....	14
ULTRA RUGGED TESTING.....	15
SUDDEN SERVICE®, ONLINE TOOLS & FULL SYSTEM SUPPORT.....	16-19

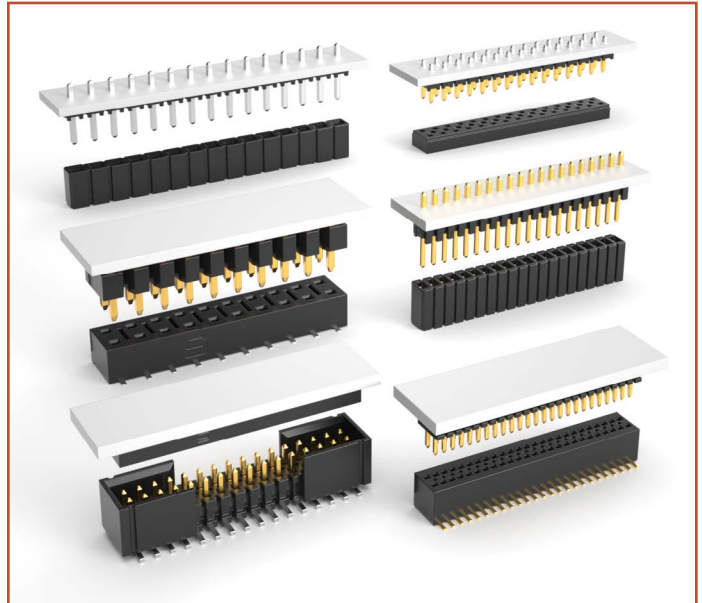


FLEXIBLE STACKING PRODUCT OVERVIEW



STANDARD PROFILE VERTICAL

CHOICE OF CONTACT SYSTEM | LARGEST VARIETY
SINGLE, DOUBLE & TRIPLE ROW DESIGNS



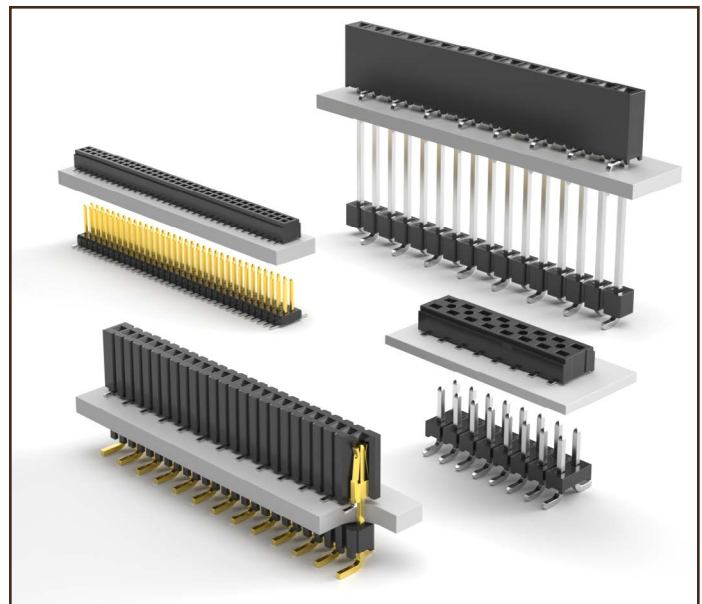
LOW PROFILE VERTICAL

DOWN TO 1.65 mm (.065") STACK HEIGHT
TIGER CLAW™ CONTACTS | SPACE SAVING



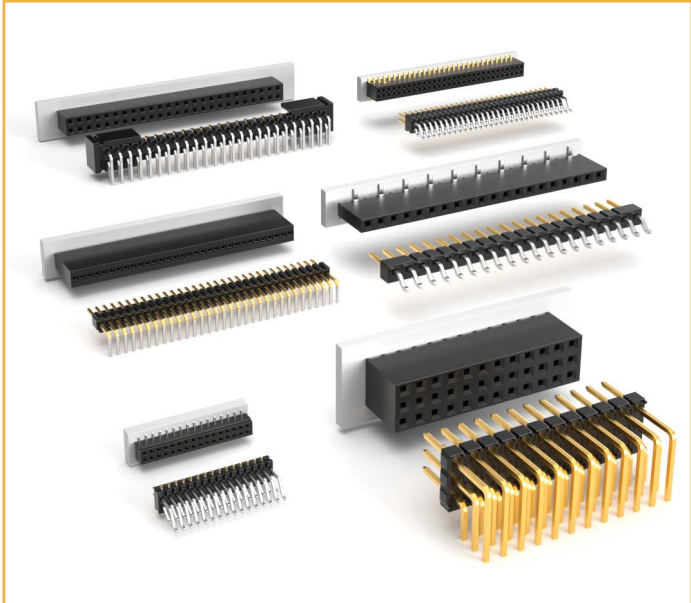
ELEVATED PROFILE VERTICAL

UP TO 48.51 mm (1.910") STACK HEIGHT
DESIGN FLEXIBILITY | CLEARANCE, AIR FLOW



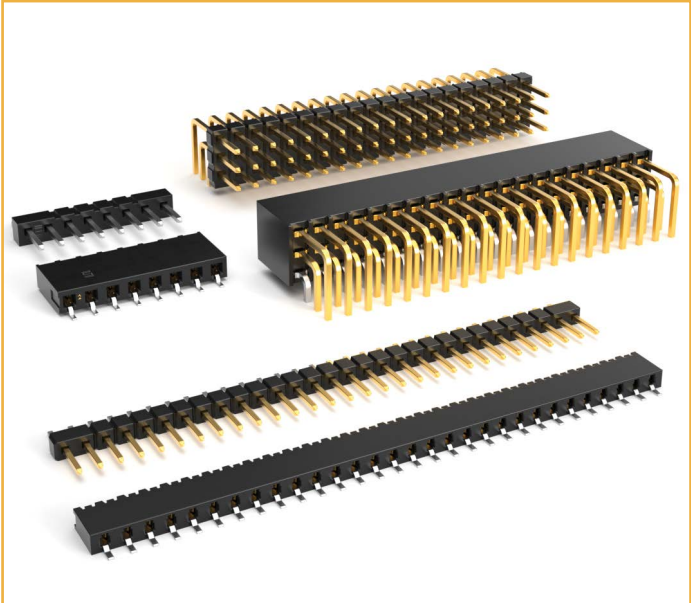
BOTTOM-ENTRY

TIGER CLAW™ CONTACTS | SPACE SAVING
ACCESS TO COMPONENTS WHEN MATED



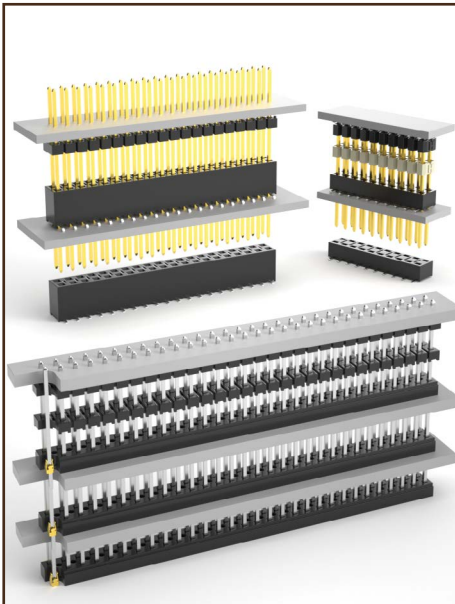
PERPENDICULAR RIGHT-ANGLE

DESIGN FLEXIBILITY | TIGER CLAW™ & TIGER BUY™ CONTACTS
THROUGH-HOLE & SURFACE MOUNT



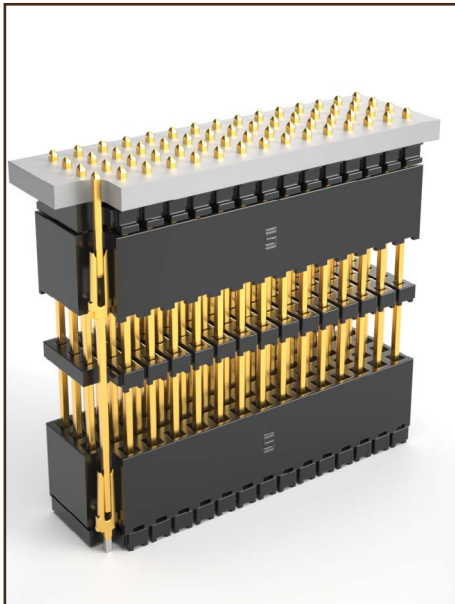
COPLANAR RIGHT-ANGLE

1-4 ROW DESIGNS | TIGER CLAW™ & TIGER BEAM™ CONTACTS
SURFACE MOUNT, THROUGH-HOLE & MIXED TECHNOLOGY



PASS-THROUGH

CONNECT 3 OR MORE BOARDS
TIGER CLAW™ & TIGER BEAM™ CONTACTS



SELF-NESTING

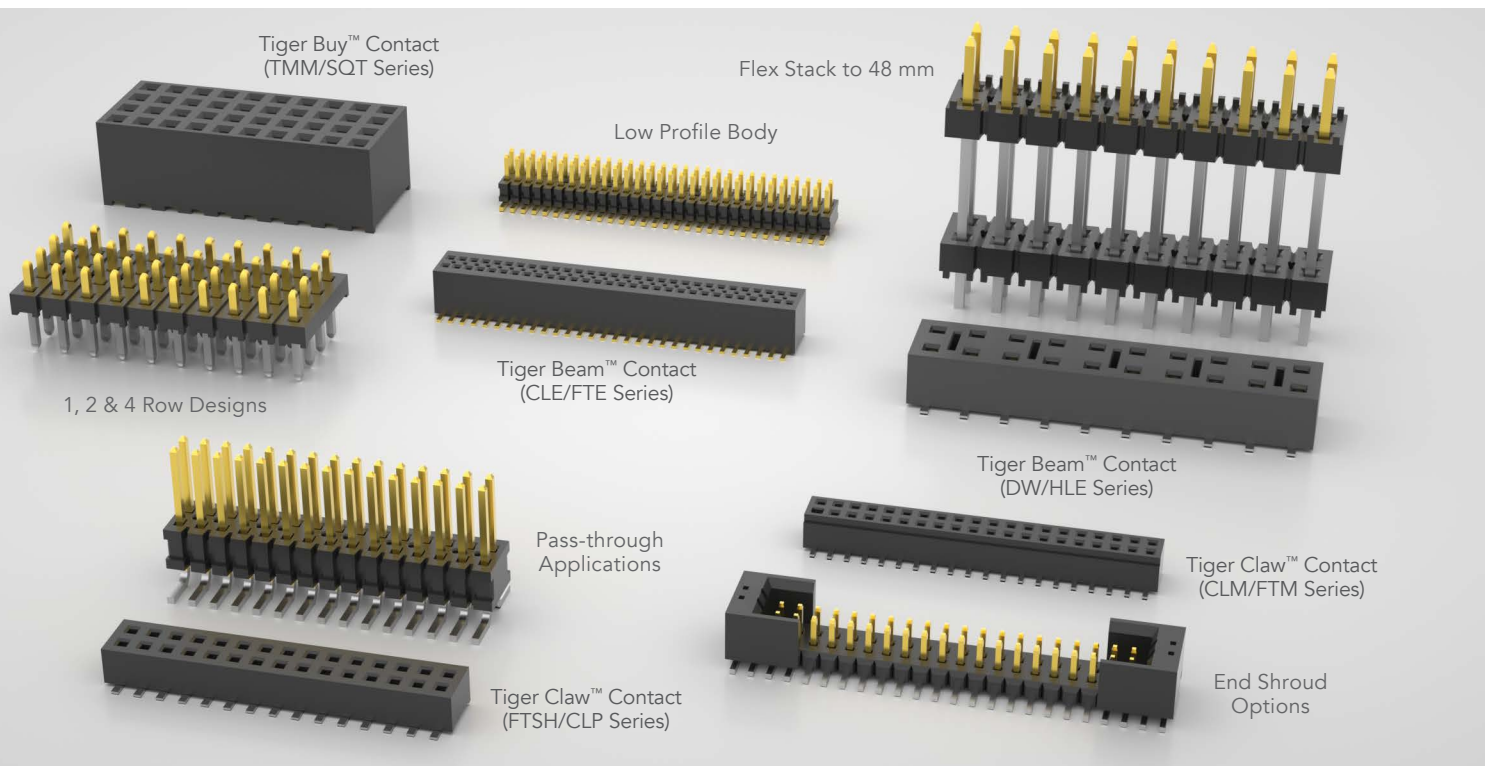
TIGER BUY™ CONTACTS
PC/104-PLUS™ EMBEDDED SOLUTIONS



IDC CABLE SYSTEMS

TIGER EYE™ CONTACTS
LOW PROFILE | IDC, FFC & RIBBON

FLEXIBLE STACKING



With the largest variety of board-to-board interconnects, Samtec makes it easy to find board stackers for any application. Header and socket systems are available in a variety of pitch, density, stack height, orientation and many more standard or custom options.

INCREDIBLE FLEXIBILITY

- Post height: Adjustable in .005" (0.13 mm) increments
- Body positions: Adjustable in .005" (0.13 mm) increments
- Board stacking distance: 1.65 mm (.065") - 48.51 mm (1.910")
- Number of pins: 2-300
- Number of rows: 1-6

CUSTOMIZABLE

- Mix-and-match headers and sockets to find the right solution
- Quick and easy custom parts are available. Contact asp@samtec.com

VARIETY OF PITCHES

- 0.80 mm (.0315")
- 1.00 mm (.0394")
- .050" (1.27 mm)
- .050" x .050" (1.27 x 1.27 mm)
- .050" x .100" (1.27 x 2.54 mm)
- 2.00 mm (.0787")
- .100" (2.54 mm)
- .156" (3.96 mm)
- .200" (5.08 mm)

BUILD IT YOURSELF

Check out the Flex Stacking Solutionator® to quickly build a mated set for your specific application. Visit samtec.com/flex-solutionator

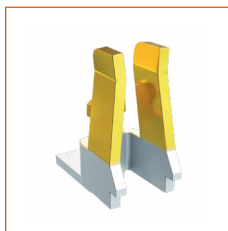


VARIETY OF CONTACTS



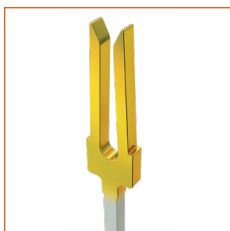
Tiger Eye™ Contact

- High-reliability
- High mating cycles
- Multi-finger contact



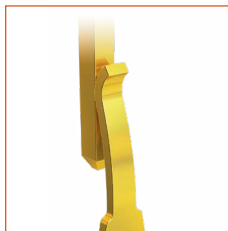
Tiger Claw™ Contact

- Pass-through
- Ultra-low profile
- Dual wipe contact



Tiger Buy™ Contact

- High-retention
- Cost-effective
- Tuning fork contact

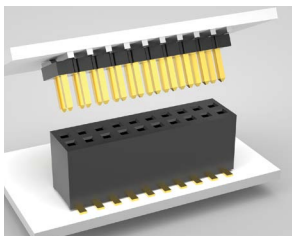


Tiger Beam™ Contact

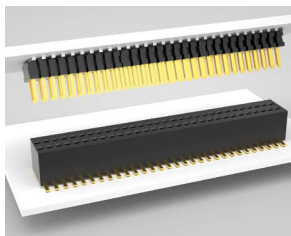
- Best cost
- Reliable performance
- Post & beam contact



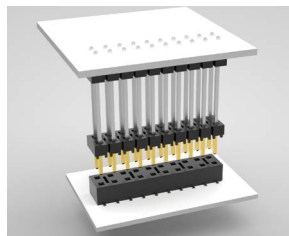
VARIETY OF ORIENTATIONS/APPLICATIONS



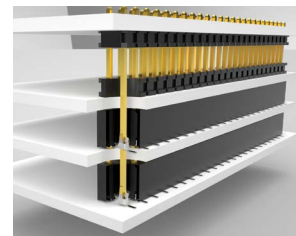
Standard



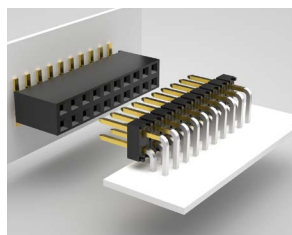
Low Profile



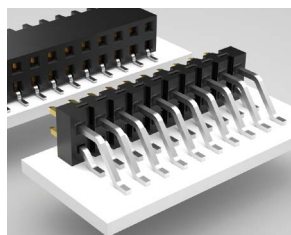
Elevated



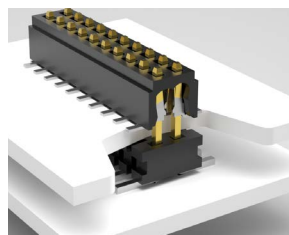
Pass-Through



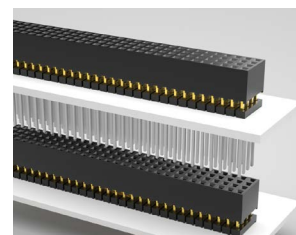
Right-Angle



Coplanar



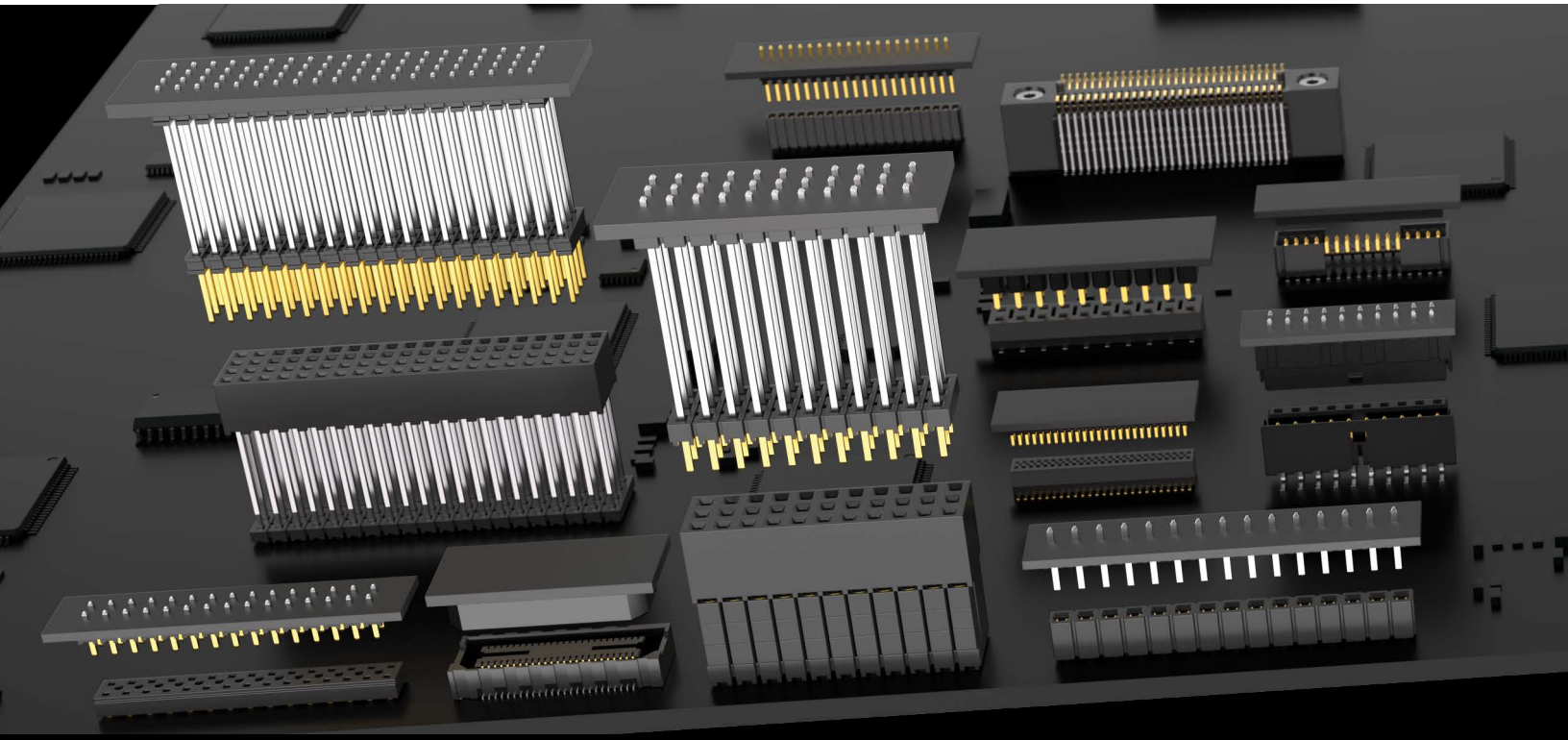
Bottom Entry



Self-Nesting

VERTICAL PROFILES

STANDARD • LOW • ELEVATED



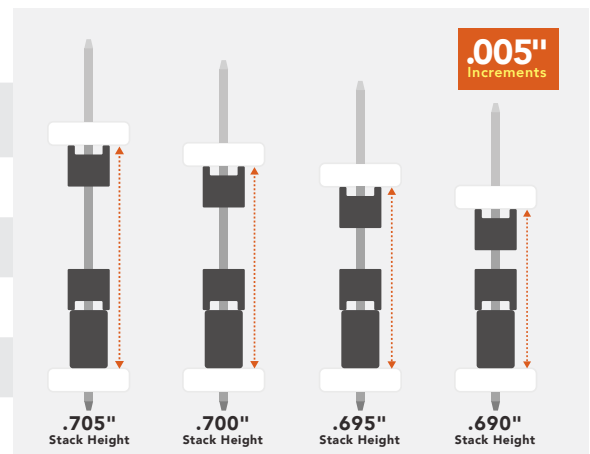
From low to elevated profiles, vertical headers and socket systems are available in a variety of pitch, density, stack height, orientation, and other standard or modified options.

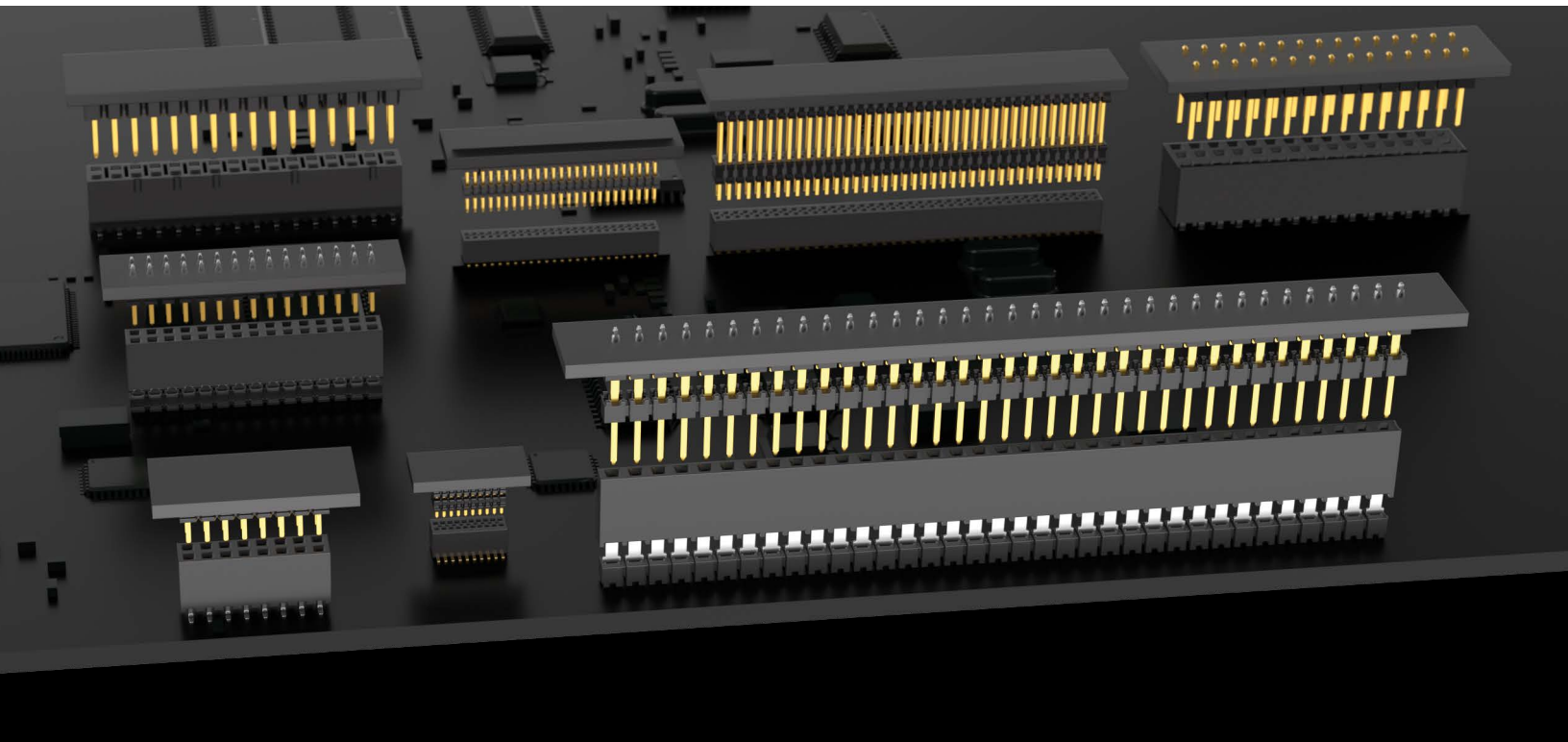
Flex Stack connectors feature the ability to move the plastic insulator in .005" (0.13 mm) increments up and down the terminal pin for a precise stacking height with a standard part number. No minimum order size, no long lead times and no tooling/NRE charges.

**FLEX
STACK**

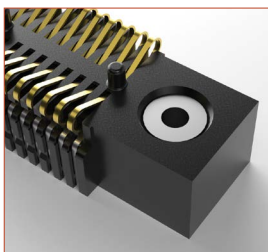
For a list of popular series and specifications, see page 14.

Post Height and Body Positions	Adjustable in .005" (0.13 mm) increments
Board Stacking Distance	1.65 mm (.065") - 48.51 mm (1.910")
Number of Pins	2 - 300
Number of Rows	1 - 6
Variety of Pitches	0.80 mm (.0315") - .200" (5.08 mm)
Contact Systems	Tiger Eye™, Tiger Claw™, Tiger Buy™, Tiger Beam™
Tail Options	Surface Mount, Through-Hole, Mixed Technology

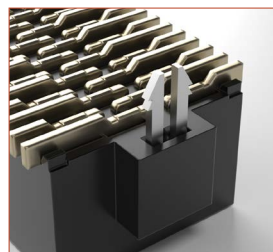




- Standard profile offers the largest variety, low profile saves space and elevated profile provides clearance for improved air flow
- 1.00 mm (.034") and .100" (2.54 mm) pitch one-piece interfaces (FSI, SEI, SIB)
- Blade & Beam (LSH/LTH, BSH/BTH, BSS/BTS, BSE/BTE)
- Floating connectors provide 0.50 mm contact float in the X and Y axes to compensate for misalignment (FS5/FT5)
- Standard and high-power connectors (FHP/FWJ, HFWJ, JW; HPF/HPM, HPW)
- Self-mating connectors for reduced inventory costs (LS2)
- Precision screw machined, and single or ganged shunts and jumpers available
- Shrouded, polarized and keyed
- FleXYZ™ design flexibility in all three axes (TMM-TH, MTMM, TMMH-TH, TW-TH, ESQT, SQT, SQW)
- SI Lite rugged board stacking solutions rated for up to 8 Gbps high-speed signals; visit samtec.com/si-lite
- Severe Environment Testing (SET) and Extended Life Product™ (E.L.P.™) qualified solutions (see page 15 for details)



Mechanical Hold Downs



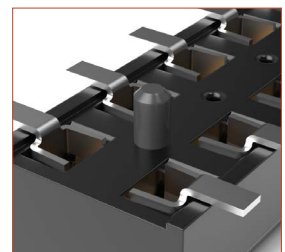
Locking Clips



Board Locks



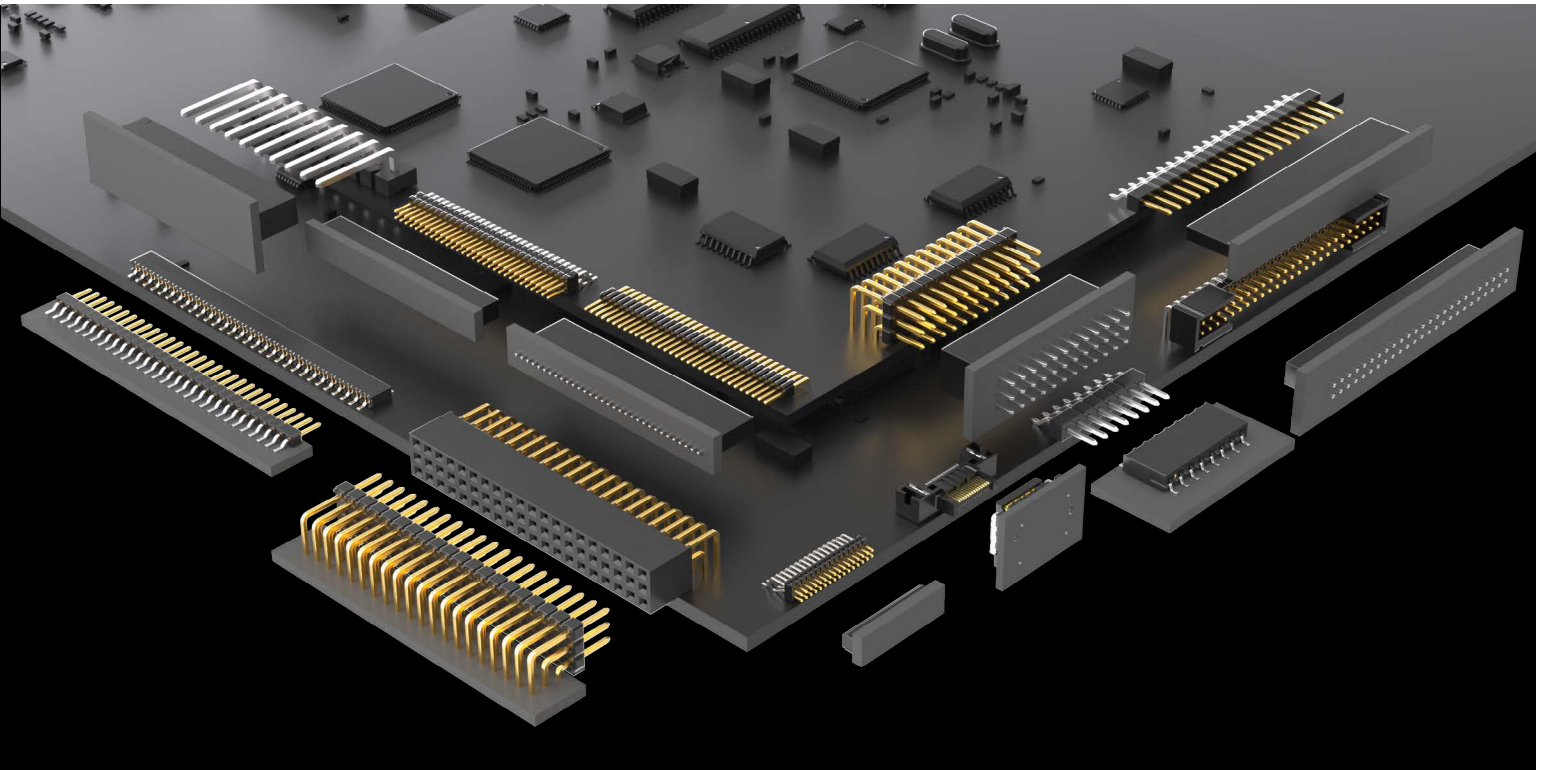
Guide Posts



Alignment Pins

RIGHT-ANGLE PROFILES

COPLANAR • PERPENDICULAR



- Right-angle connectors increase design flexibility
- **For a list of popular series and specifications, see page 14**
- One-piece interface for power or signal (SIR1)
- Floating connectors provide 0.50 mm contact float in the X and Y axes to compensate for misalignment (FS5/FT5)
- Basic Blade & Beam system (BSH/BTH); edge mount available
- Self-mating connectors for reduced inventory costs (LS2)
- Standard and high-power connectors (FHP/FWJ, HFWJ, JW; HPF/HPM, HPW)

- Shrouded, polarized and keyed
- Ruggedizing features including locking clips, board locks, guide posts and alignment pins
- SI Lite solutions rated to run up to 8 Gbps high-speed signals through rugged board stackers; visit samtec.com/si-lite
- Severe Environment Testing (SET) and Extended Life Product™ (E.L.P.™) qualified solutions (see page 15 for details)

8
Gbps



Variety of Pitches .156" (3.96 mm) - 2.00" (5.08 mm)

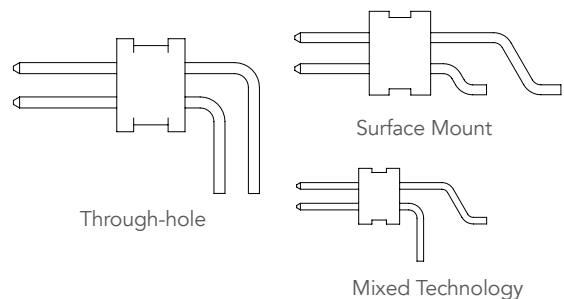
Number of Pins 2 - 200

Number of Rows 1 - 4

Contact Systems Tiger Claw™, Tiger Buy™, Tiger Beam™

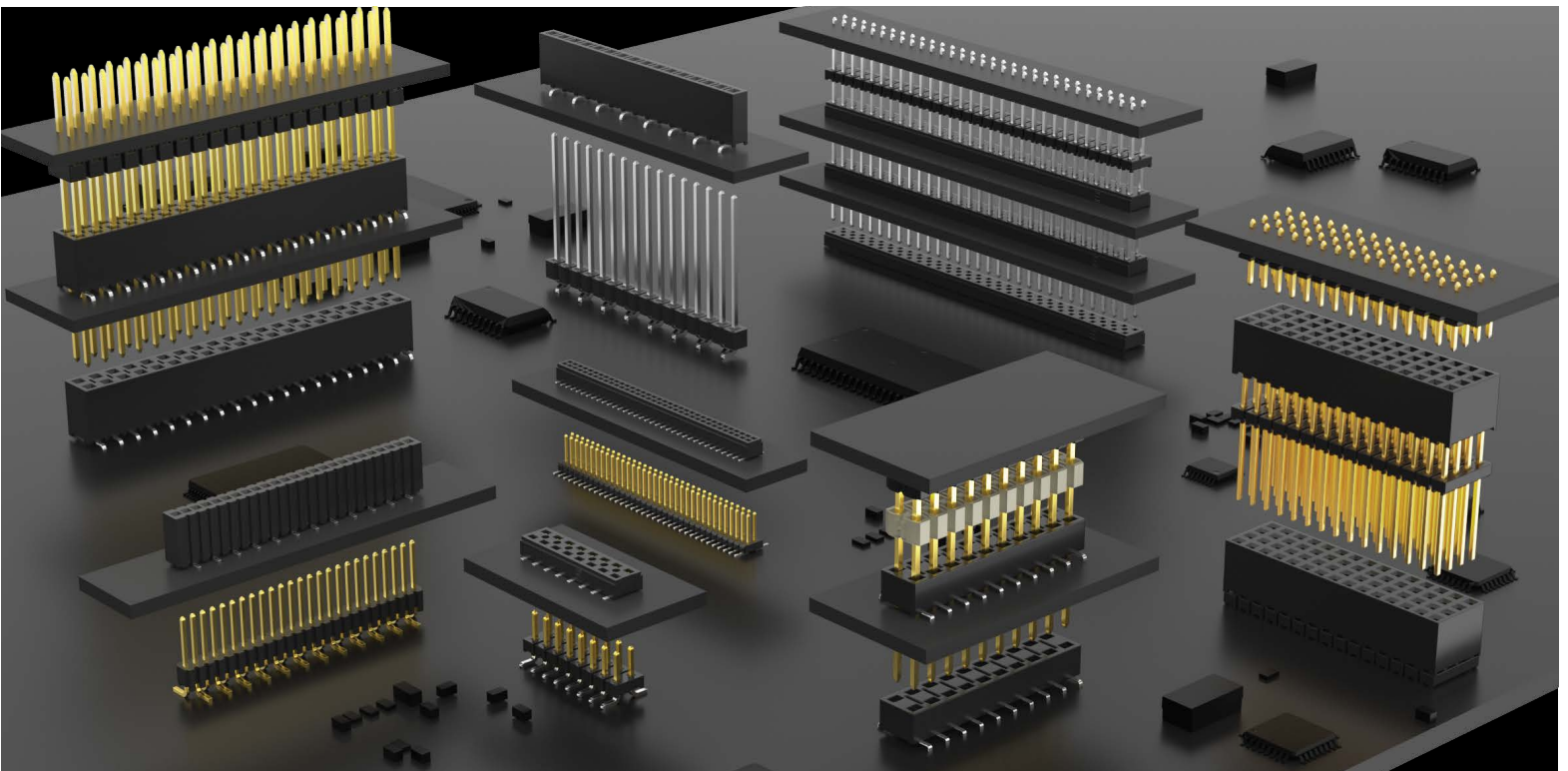
Tail Options Surface Mount, Through-Hole, Mixed Technology

RIGHT-ANGLE TAIL OPTIONS



ALTERNATE ORIENTATIONS

BOTTOM ENTRY • PASS-THROUGH • SELF-NESTING



- Space saving, bottom entry connectors provide access to components when mated
- Pass-through solutions connect three or more boards
- **For a list of popular series and specifications, see page 14**
- Self-nesting sockets with square post tails for PC/104™ and PC/104-Plus™ applications (ESQT, PTHF, ESQ)
- FleXYZ™ design flexibility in all three axes: 1-6 rows, up to 50 positions per row, body heights to 20.32 mm (.800")



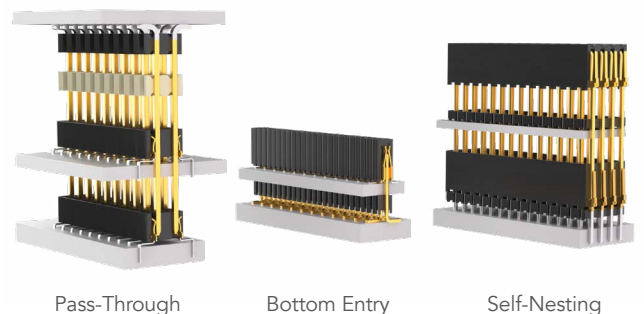
- SI Lite solutions rated to run up to 8 Gbps high-speed signals through rugged board stackers; compatible with PCIe®, JTAG, LVDS and other industry standards. Visit samtec.com/si-lite.
- Extended Life Product™ (E.L.P.™) certified solutions (see page 15 for details)



Variety of Pitches	0.80 mm (.0315") - 2.54 mm (.100")
Number of Pins	1 - 100
Number of Rows	1 - 6
Contact Systems	Tiger Claw™, Tiger Buy™, Tiger Beam™
Tail Options	Surface Mount, Through-Hole (standard or offset), Press-Fit

PCI-SIG®, PCI Express® and the PCIe® design marks are registered trademarks and/or service marks of PCI-SIG.

MATED APPLICATIONS



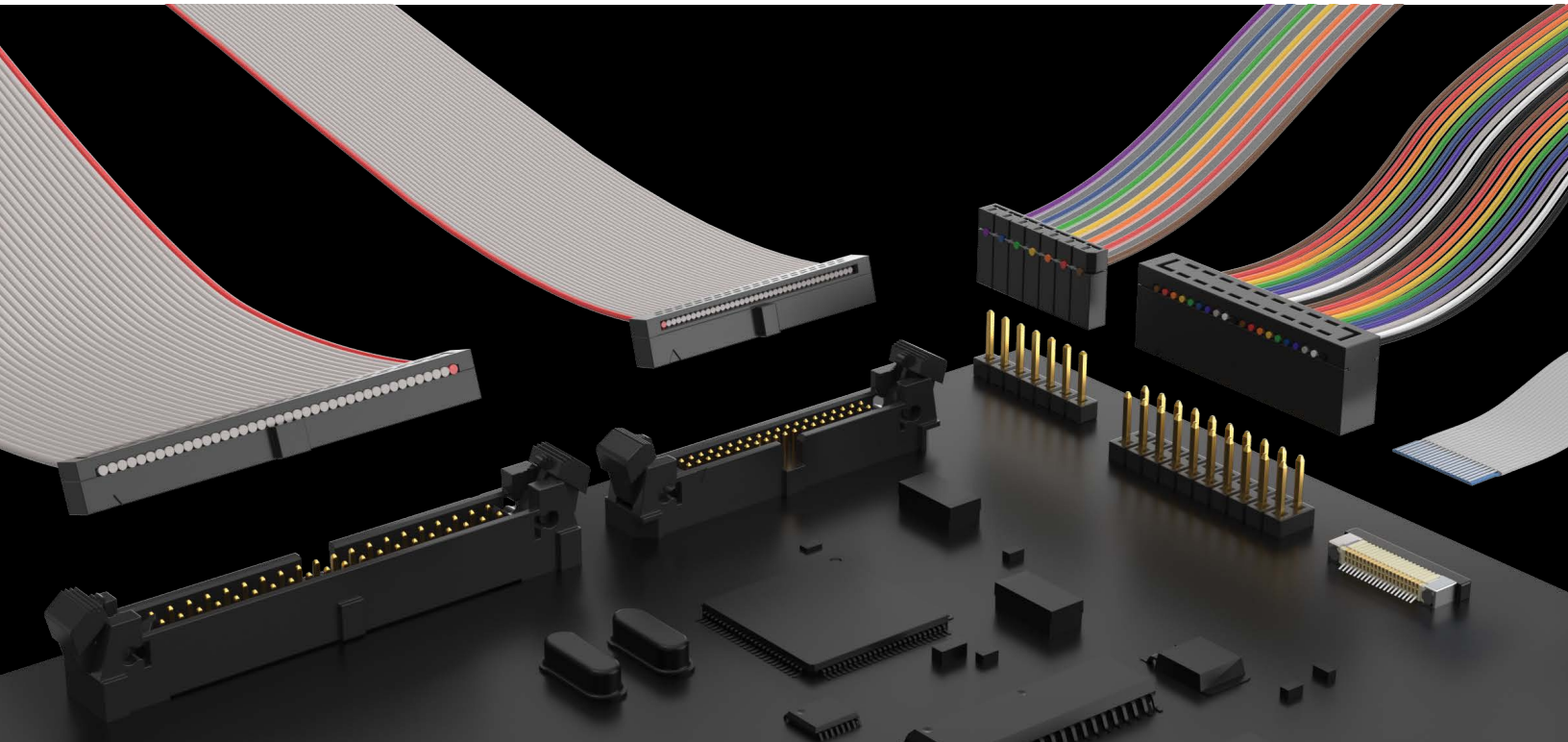
Pass-Through


Bottom Entry

Self-Nesting

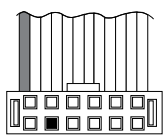
IDC CABLE SYSTEMS

ASSEMBLIES & HEADERS • FLEX JUMPERS

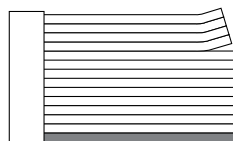


- Exceptionally low profile designs for space savings
- .050" (1.27 mm) and 2.00 mm (.0787") pitch high-reliability Tiger Eye™ IDC systems (FFSD/FFMD, TCSD/TCMD, FFTP/FMTP) 
- Choice of socket and plug, single or double ended, twisted pair and flat cable
- Mates with Tiger Eye™ board level connectors, shrouded and ejector terminal strips
- Flexible Flat Ribbon IDC systems with dual beam contacts and no bulky side locks (IDMS/IDMD, IDSS/IDSD)
- Molded-to-Position IDC systems mate with .025" (.064 mm) square post headers (HCSS/HCSD, HCMS/HCMD)
- Mates with .100" (2.54 mm) pitch headers and sockets
- Flat Flexible Cable (FFC) jumpers are easily customizable and mate with ZIF (zero insertion force) connectors (FJH/ZF5S)

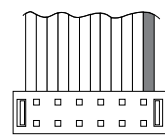
WIRING OPTIONS



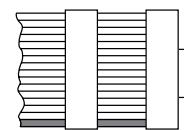
Position Polarization



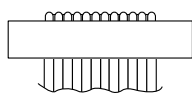
Breakout



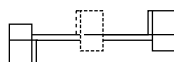
Reverse Wiring



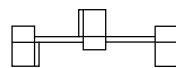
Daisy Chain



Strain Relief



Reversed



Middle Reversed



Outside Reversed

CUSTOM SOLUTIONS

WILLINGNESS, SUPPORT, & EXPERTISE

Industry-Leading Customer Service

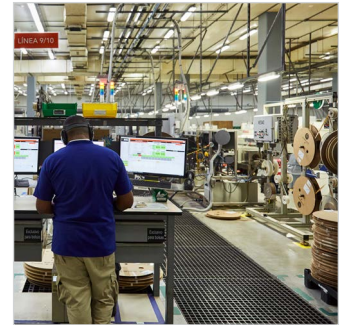
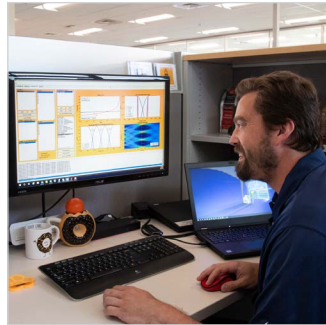
- Quotes and samples in 24 hours
- Prototype and processing assistance
- Dedicated Application Specific Product engineers and technicians

Flexible, In-House Manufacturing

- Global Operations, including multiple cable fabrication & assembly facilities
- Quick-turn samples and prototypes
- Custom & modified product support

Signal Integrity Expertise

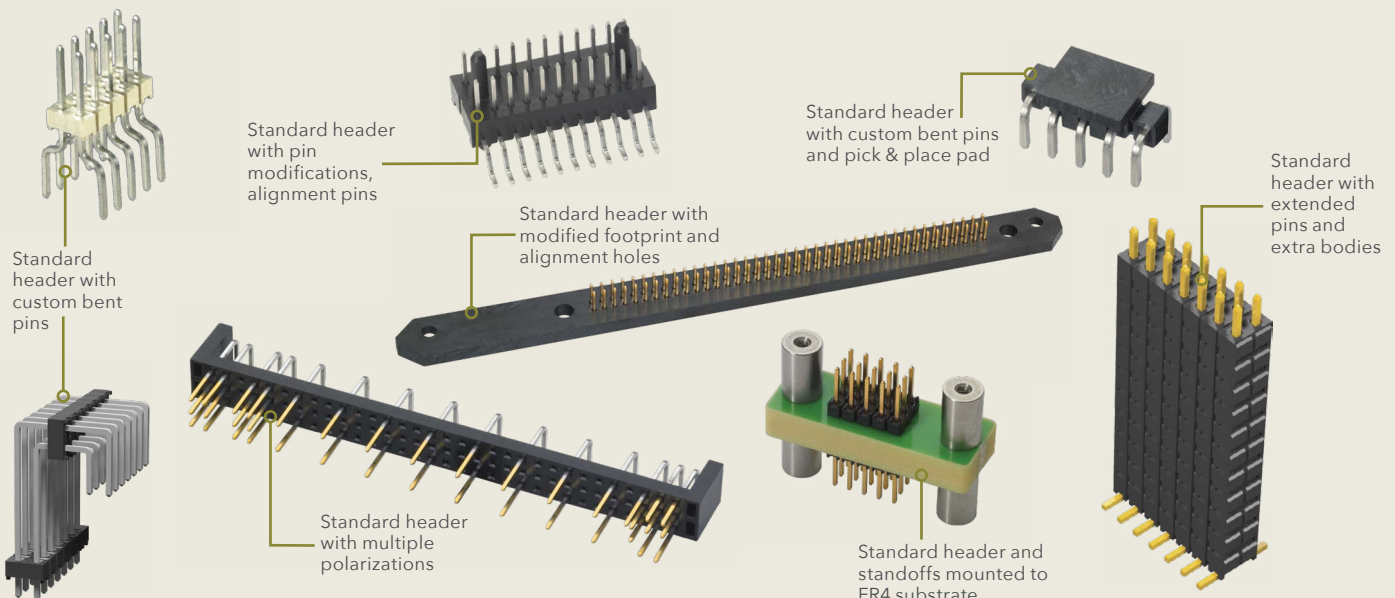
- Industry-leading engineering support for high-performance system design
- Full system optimization assistance, including simulation, testing, analysis and evaluation



CUSTOMS AND EXPRESS MODIFICATIONS

Samtec is able to support completely new and/or custom designs, as well as common simple modifications - often with low or no NRE charges, short lead times, quick turn samples and low or no MOQs. Visit samtec.com/custom or contact asp@samtec.com.

- Contacts and bodies
- Stamping, plating and molding
- Polarization
- Ruggedizing strain relief, screw downs, latches, locks, etc.
- Shielding modifications
- Shrouds and alignment pins
- Wiring
- Pick and place pads
- Packaging and screen printing



FLEXIBLE STACKING REFERENCE CHART

SERIES	FSI	SEI	SIB	CLE	FTE	CLM	FTMH/FTM	MLE	MW
PITCH	1.00 mm (.0394")		.100" (2.54 mm)	0.80 mm (.0315")		1.00 mm (.0394")			
ORIENTATION	V				V & RA	V	V & RA	V	
BOARD STACKING (mm)	MIN	3	1.65	3.8	5	3.48		4.57	4.62
	MAX	10			9.14	8.43	5.11	9.27	
CONTACT SYSTEM					Tiger Beam™	Tiger Claw™		Tiger Beam™	
MATES	One-Piece			FTE, AW	CLE	FTM, FTMH, MW	CLM, MLE	FTM, FTMH, MW	CLM, MLE

SERIES	CLP	FLE	FTS	FTSH	FW	SOLC	TOLC	DWM/HDWM	FTR	RSM	SLM
PITCH	.050" x .050" (1.27 mm x 1.27 mm)							.050" x .100" (1.27 mm x 2.54 mm)			
ORIENTATION	V & RA	V		V & RA	V						
BOARD STACKING (mm)	MIN	3.53	5.82	3.53	5.18	7.72	6.35	9.65	9.78		7.11
	MAX	17.75	19.15	5.82	7.49	19.15	12.00	22.99	14.73	19.69	19.43
CONTACT SYSTEM	Tiger Claw™	Tiger Beam™				Tiger Buy™					Tiger Buy™
MATES	FTSH, FTS, FW		CLP, FLE			TOLC	SOLC	SMS, SLM, RSM		FTR, (H)DWM, TML, ZML, (H)TMS	(H)TMS, (H)MTMS, (H)DWM, FTR

SERIES	MMT	TMM/MTMM	TMMH	TW	ZLTMM	CLT	ESQT/-368	MMS	SMM	SQT	SQW	TLE	
PITCH	2.00 mm (.0787")												
ORIENTATION	RA	V & RA		V				V & RA	V	V & RA	V		
TERMINATION	SMT & MT	T/H & SMT			T/H	T/H & SMT	T/H	T/H & SMT	SMT	T/H	T/H & SMT	SMT	
BOARD STACKING (mm)	MIN	2	3.63	4.14	7.49	7.62	3.63	9.37	5.94	6.07	7.85		6.99
	MAX	4	18.87	22.07	43.31	13.34	4.98	43.31	19.81	17.78	29.59		17.53
CONTACT SYSTEM						Tiger Claw™	Tiger Buy™	Tiger Claw™	Tiger Eye™	Tiger Buy™		Tiger Beam™	
MATES	CLT, SQT, SQW, ESQT, TLE, SMM, MMS				SQT, SQW, ESQT, SMM	(M)TMM, TMMH, MMT, TW, TSH	TMMH, (M)TMM, MMT, TW, (Z)LTMM, ESQT, PTT, TSH, TMMMS, PTHF	TMMH, (M)TMM, MMT, TW, (Z)LTMM, TSH	(M)TMM, TMMH, MMT, TW, (Z)LTMM, TW, PTT	TMMH, (M)TMM, MMT, TW, TSH, (Z)LTMM, PTT	TMMH, (M)TMM, MMT, TW, TSH, (Z)LTMM, PTT	TMMH, (M)TMM, MMT, TW, (Z)LTMM, TSH	

SERIES	DW, EW, ZW	HW	MTSW/HMTSW	TLW/MTLW	TSM	TSW/HTSW	BCS	ESW, ESQ	HLE	SSM	SSQ	SSW
PITCH	.100" (2.54 mm)											
ORIENTATION	V		V & RA				V			V & RA		
TERMINATION	T/H	T/H & SMT	T/H		SMT & MT	T/H			T/H & SMT	SMT	T/H	T/H & SMT
BOARD STACKING (mm)	MIN	13.59	10.03	7.24	6.1	7.47	7.87	9.02	13.59	7.47	11.18	10.03
	MAX	48.51	30.73	46.36	20.96	14.48	35.69	18.92	48.51	26.16	30.1	38.35
CONTACT SYSTEM							Tiger Claw™	Tiger Buy™	Tiger Beam™	Tiger Claw™	Tiger Buy™	
MATES	SSW, SSQ, ESW, ESQ, CES, SLW, BSW, BCS, SSM, HLE, PHF		SSW, SSQ, ESW, ESQ, BCS, BSW, CES, SLW, HLE, SSM	BSW, CES, SLW, HLE	SSW, SSQ, SSM, BSW, ESW, ESQ, BCS, SLW, CES, HLE	SSW, SSQ, SSM, ESW, ESQ, BCS, BSW, CES, SLW	(H)TSW, (H)MTSW, TSS, ZSS, DW, EW, ZW, HW, TSM, MTLW, PHT	(M)TSW, EW, MTLW, (H)TSS, ZSS, TSM, DW, ZW, HW, TSSH	(M)TSW, DW, EW, ZW, (M)TLW, TSM, HW	(M)TSW, TST, TSS, ZST, ZSS, DW, EW, ZW, TSM, HMTSW, HTSW, TSSH, BST, HTSS, (M)TLW	TSW, MTSW, MTLW, EW, ZW, TSS, ZSS, TSM, TSSH, HTSS	(H)TSW, (H)MTSW, MTLW, EW, ZW, TSS, HTSS, ZSS, TSM, TSSH, DW, HW

ULTRA RUGGED TESTING

DESIGN QUALIFICATION TESTING

All Samtec series undergo Design Qualification Testing (DQT). This includes Gas Tight, Normal Force, Thermal Aging, Mating/Unmating/Durability, IR/DWV, Current Carrying Capacity (CCC), and Mechanical Shock/Random Vibration/LLCR and Event Detection.



EXTENDED LIFE PRODUCT™

E.L.P.™ certified products are tested to additional, rigorous standards which evaluate contact resistance in simulated storage and field conditions.

Products are exposed to 10-year Mixed Flowing Gas, and achieve high mating cycles (250 to 2,500). Certain plating and/or contact options apply.

Visit samtec.com/ELP for a complete list of certified products, or contact ASG@samtec.com.



E.L.P.™ Certified Flexible Stacking Products:

- BCS/TSW - .100" Pitch Header & Pass-Through Socket
- BSE/BTE - 0.80 mm Pitch Basic Blade & Beam System
- BSH/BTH - 0.50 mm Pitch Basic Blade & Beam System
- BSS/BTS - 0.635 mm Pitch Basic Blade & Beam System
- CLM/FTMH - 1.00 mm Pitch Low Profile Header & Socket
- CLP/FLE/FTSH - .050" Pitch Micro Header & Sockets
- CLT/TMMH - 2.00 mm Pitch Low Profile Header & Socket
- SMM/TMM - 2.00 mm Pitch Low Profile Tiger Eye™ System
- SSM/TSM - .100" Pitch Square Post Header & Socket

SEVERE ENVIRONMENT TESTING

Severe Environment Testing (SET) is a Samtec initiative to test products beyond typical industry standards and specifications to ensure they are more than suitable for rugged/harsh environment industries and other extreme applications. Visit samtec.com/SET for a complete list of qualified products, or contact SET@samtec.com.



Meets or Exceeds MIL-DTL-55301 Testing

- Exceeds VITA™ 47.1 Temperature Cycling Class C4
- Exceeds VITA™ 47.1 Non-Operating Temperature Class C4
- Exceeds VITA™ 47.1 Altitude for DWV
- VITA™ 47.1 Electrostatic Discharge Resistance
- VITA™ 47.1 Module Insertions
- VITA™ 47.3 Humidity
- VITA™ 47.1 Operating Shock Class OS2
- VITA™ 47.1 Vibration Class VS3

SET Qualified Flexible Stacking Products:

- SSM/TSM - .100" Pitch Square Post Header & Socket
- FTSH/CLP - .050" Pitch Header & Socket

NASA:

SET products are approved for Class D missions that require high-reliability, quick-turn and cost-effective solutions for LEO Satellites, SmallSats, CubeSats and other space exploration applications.

Samtec also utilizes NASA outgassing data to determine if certain products meet NASA's ASTM E595-77/84/90 test requirements. Visit outgassing.nasa.gov for data.

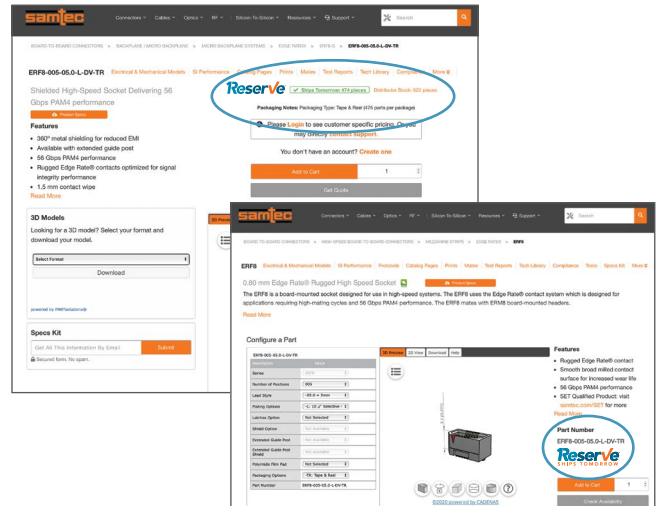
SAMTEC SUDDEN SERVICE®

UNMATCHED LEAD-TIMES | Innovative Programs & Systems Enable Deliveries in Days, Not Weeks.

Reserve® SHIPS TOMORROW

This designation allows customers to **quickly and easily identify availability of over 200,000 of Samtec's most popular connectors and cables - guaranteed to ship in 1-day.**

Look for the **Reserve®** badge throughout **samtec.com** to quickly determine if your part number is eligible, along with current availability, quantity breaks and pricing. Hundreds of part numbers are being added daily!



24 HOUR SUDDEN SAMPLE™

Free product samples shipped in **24-hours** or less have been a cornerstone of Samtec Sudden Service® since the company was founded. Visit **samtec.com** to quickly request your sample.

2 DAYS WORLD DIRECT™

An innovative shipping program that **bridges the gap between manufacturing facilities and customers**, allowing for manufacturing flexibility without increased costs, and with even faster lead-times. Contact **ecustomerservice@samtec.com** to learn more.

24/7 WORLDWIDE ACCESS | Samtec is the Electronics Industry's Service & Technology Leader.

Technical Support

Signal Integrity Group: **sig@samtec.com**

Application Support Group: **asg@samtec.com**

Interconnect Processing Group: **ipg@samtec.com**

Supply Chain Support

MySamtec™ Real-Time Account Access: **account.samtec.com**

Personal Account Managers & CSRs: **ecustomerservice@samtec.com**

Upfront, Aggressive 24-Hour Quotes: **pricing@samtec.com**

MYSAMTEC™ | A Personalized Web Experience for Easy Ordering.

Samtec's user-friendly eCommerce platform allows you to quickly and easily check product availability and pricing, as well as place and manage your orders online.

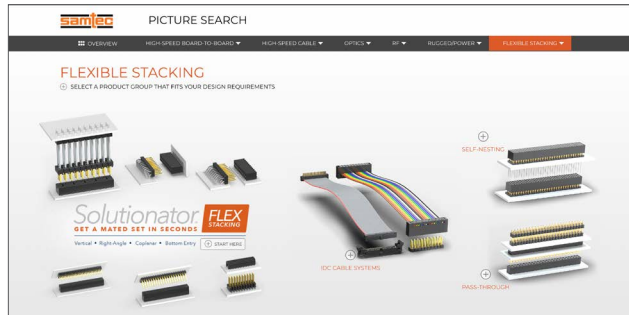
mySamtec™
account.samtec.com

ONLINE TOOLS | Find, Design & Validate Your Solution

Quickly and easily find the right solution, whether you prefer to search by product name or characteristics, browse through pictures, or build an assembly by entering physical specifications.

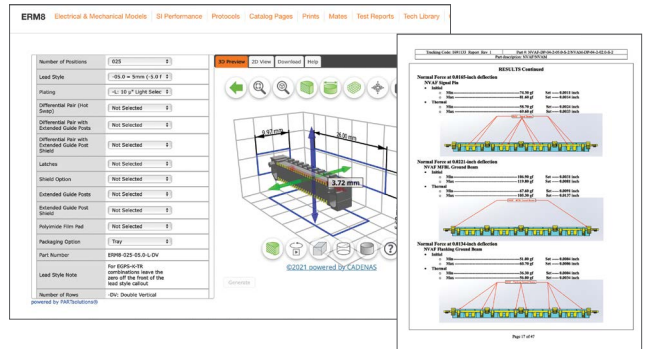
PICTURE SEARCH

Browse through a highlight reel of Samtec's most popular products to find the ideal solution for your application, view specifications, check availability, order samples and more. To find your solution, visit samtec.com/picturesearch.



DOWNLOADS

Samtec offers immediate and unlimited access to all the documentation you need to select the right solution for your application from 3D models, prints and footprints to test reports, white papers and so much more. Visit samtec.com to start exploring.



SOLUTIONATOR®

Quickly build mated connector sets or design full cable assemblies using a wide variety of user-defined search parameters and filters, view specs and order samples in Samtec's online design tools.

Solutionator FLEX STACKING



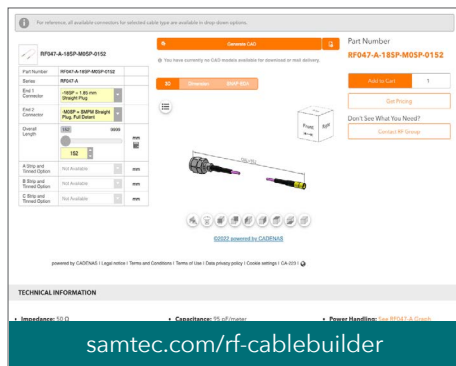
Solutionator HS TO BOARD



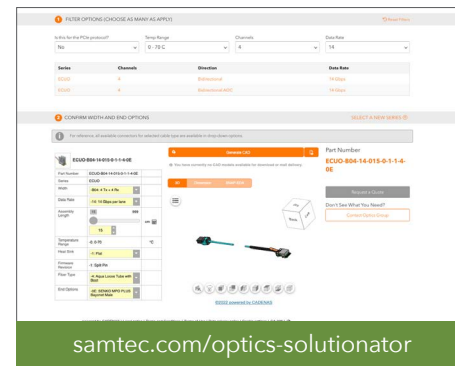
Solutionator HS CABLE



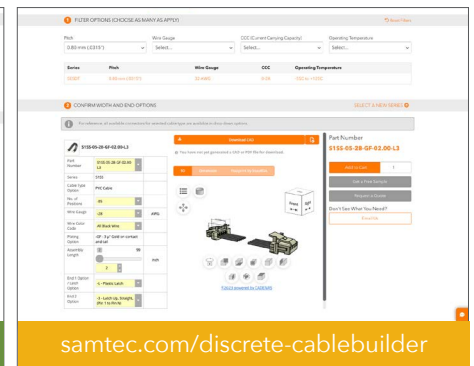
Solutionator RF CABLE



Solutionator ACTIVE OPTICS



Solutionator DISCRETE WIRE



INTEGRATION LEADS TO INNOVATION

Samtec's integrated business model facilitates high-level design and development of advanced interconnect systems and **TECHNOLOGIES**. Along with industry-leading expertise, this allows us to offer effective strategies and support for **optimizing the entire signal channel of high-performance systems**.

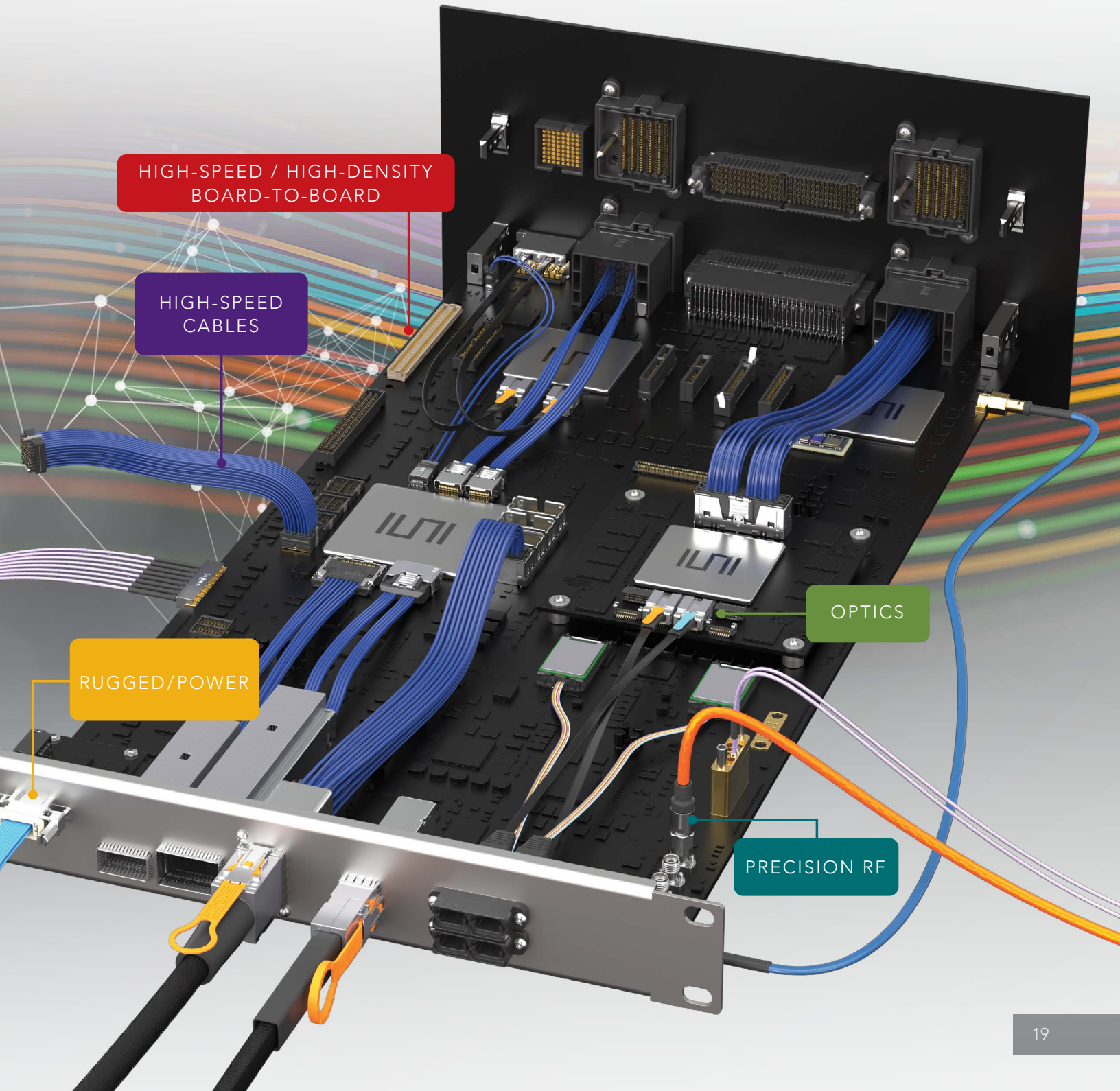
Samtec is structured like no other company in the interconnect industry. We work in a fully integrated capacity that enables true collaboration and results in uniquely innovative **PRODUCTS** because **our technology teams are not limited by the boundaries of traditional business units**.



SILICON-TO-SILICON™ SOLUTIONS

As bandwidth, scale and power requirements continue to challenge conventional engineering methods, Samtec strives to help **optimize the landscape of your entire system** - and develop solutions, together.

Samtec's industry-leading signal integrity expertise, full system optimization strategies, and innovative products and technologies help address the challenges of **next gen data transmission to 224 Gbps and beyond**.



GLOBAL SUPPORT NETWORK



samtec
SUDDEN SERVICE®

www.samtec.com

ISO-9001 and/or IATF 16949 Certified
© JUNE 2024, SAMTEC INC.