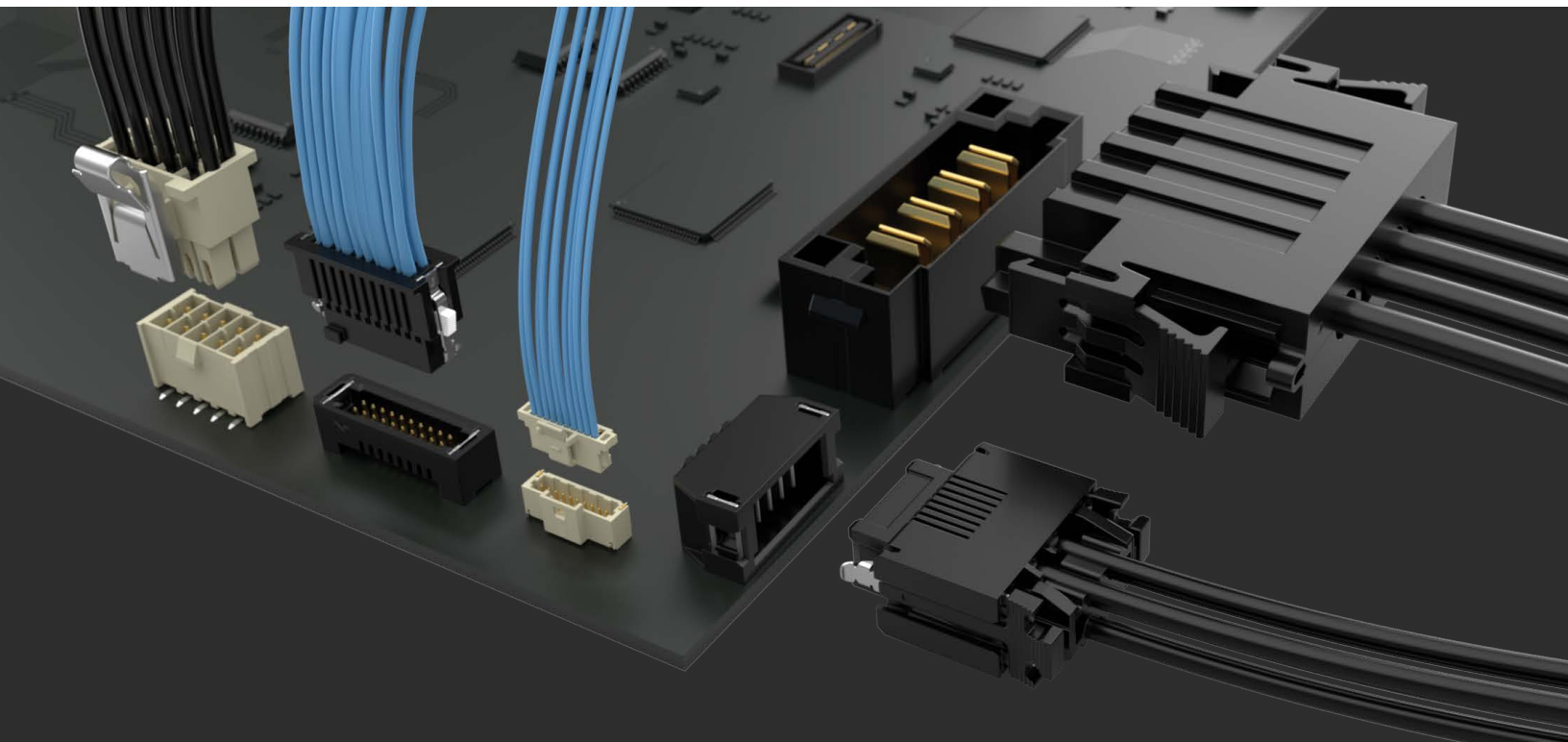




DISCRETE WIRE SYSTEMS



DISCRETE WIRE SYSTEMS



MICRO MATE™ 1.00 mm PITCH SYSTEMS

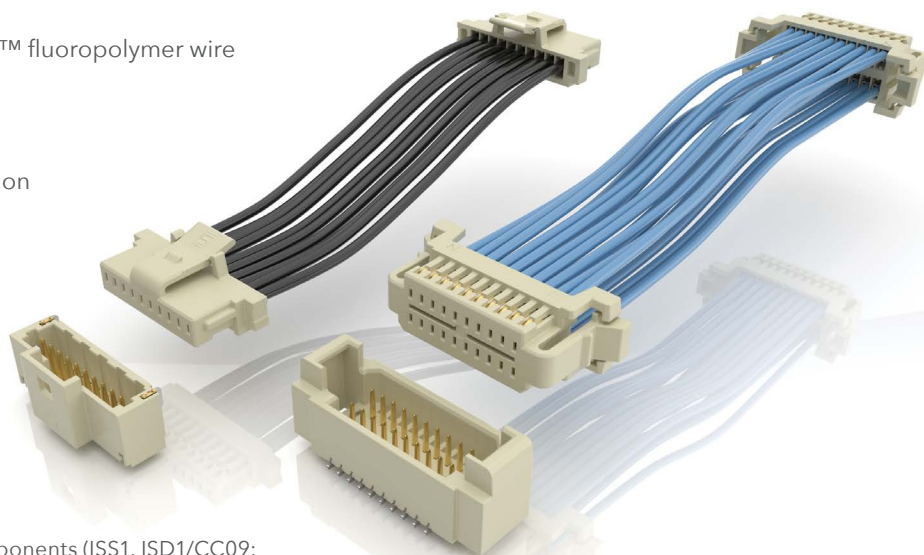
- Cable-to-board, cable-to-cable and cable-to-panel
- Low profile design down to 3.2 mm
- 28 and 30 AWG wire options in PVC or Teflon™ fluoropolymer wire
- Up to 40 total crimp-style dual leaf contacts
- Socket or terminal, single or double row
- Rugged positive latching for increased retention
- Vertical and right-angle mating headers

MICROMATE™

MAX
2.7
A m p s



Components (ISS1, ISD1/CC09;
IST1, IDT1, ISP1, IDP1/TC37)
and tooling available:
visit samtec.com/tooling



S1SS/T1M, S1SDT/T1M

*Teflon™ is a trademark of the Chemours Company FC, LLC used under license by Samtec.

samtec.com/micromate

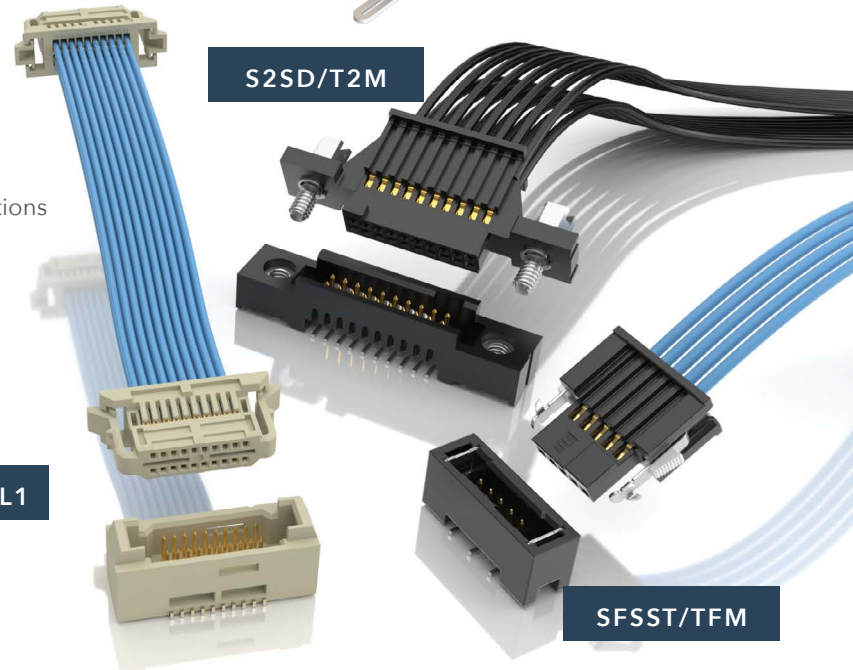
TIGER EYE™ DISCRETE WIRE SYSTEMS

- 0.80 mm, 1.27 mm and 2.00 mm pitch
- 24 to 32 AWG in PVC or Teflon™ fluoropolymer wire; color coded wire available
- Single or double ended assemblies
- Up to 100 total positions
- Shrouded, polarized and keyed for more rugged applications
- Retention latching option for higher withdrawal forces
- Optional screw downs
- Crimp for automotive applications in development for 1.27 mm pitch (SFSD/FFSD) assemblies; contact AutoSalesGroup@samtec.com



TIGER EYE™
CONTACT

MAX
3.8
A m p s



SESDT/TEM-L1

S2SD/T2M

SFSST/TFM

	0.80 mm Pitch	1.27 mm Pitch	2.00 mm Pitch
Series	SESDT	SFSS, SFSST, SFSD, SFSDT	S2SD, S2SDT
Cable AWG	32	28 and 30	24, 26, 28, 30
Cable Type	Teflon™ fluoropolymer	PVC or Teflon™ fluoropolymer; color coded available	PVC or Teflon™ fluoropolymer; color coded available
No. of Rows	2	1 or 2	2
Total No. of Positions	10, 20, 30, 40	3 - 100	10 - 60
Mates - Terminal Cables	--	TFSS, TFSST, TFSD, TFSDT	T2SD, T2SDT
Mates - Board Connectors	TEM-L1	TFM/SFM, TFC/SFC	T2M/S2M
Component - Body	ISDE	ISDF, TSDF	ISD2, ITD2
Component - Contact	CC396	CC03R, CC03M, T1M44-M, T1M44-R	CC81L, CC81R, T1M82-L, T1M82-R



Components available for build-it-yourself design and application flexibility; please see chart above



Hand tools available for low volume and semi-automatic mini applicators for self assembly; visit samtec.com/tooling



IDC cable assemblies with rugged strain relief and mating shrouded headers; visit samtec.com/idc

Discrete Wire Systems

MINI MATE® DISCRETE WIRE SYSTEMS

- .100" (2.54 mm) pitch
- Individually shrouded contacts
- 2 to 50 total positions
- Single and double row
- 20 to 30 AWG PVC or Teflon™ fluoropolymer wire; color coded available
- Keyed polarization
- Rugged metal or plastic latching
- Vertical or right-angle mating header
- Sealed version on roadmap for harsh environments

MAX
4.8
A m p s

MMSDT/IPL1

MMSS/IPL1-RA



Components (IPD1/CC79L/
CC79R) and tooling available
for application flexibility; visit
samtec.com/tooling

POWER MATE® DISCRETE WIRE SYSTEMS

- .165" (4.19 mm) pitch
- Individually shrouded contacts
- 2 to 30 total positions
- Single and double row
- 16 to 24 AWG PVC or Teflon™ fluoropolymer wire
- Keyed polarization
- Rugged plastic latching
- Single or double ended
- Vertical or right-angle mating header

MAX
10.4
A m p s

PMSD/IPBT

PMSST/IPBT-RA



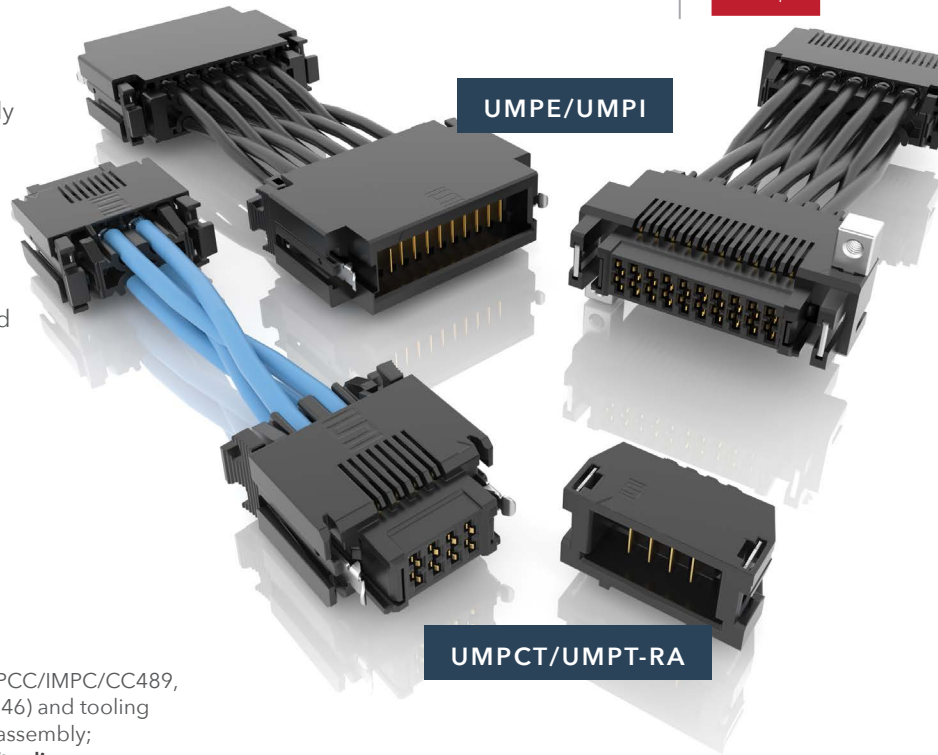
Components (IPBD/CC69L/
CC69R) and tooling available;
visit samtec.com/tooling

mPOWER® ULTRA MICRO POWER SYSTEMS

mPOWER®

MAX
18
A m p s

- Micro 2.00 mm pitch cable-to-board and cable-to-cable solutions
- Simplifies board layout and delivers power directly to active components
- 2 - 10 total power blades
- 16 and 18 AWG wire; color coded available
- Plastic top latching or metal side latching options
- Tin or 10 μ" Gold plated power blades; 30 μ" Gold plating available to meet specific regulations
- PVC or high-temp Teflon™ fluoropolymer wire
- Vertical and right-angle mating headers with optional weld tabs



Components (IMPCC/IMPC/CC489, IMPEC/IMPE/TC146) and tooling available for self assembly; visit samtec.com/tooling

POWERSTRIP™ HIGH-POWER SYSTEMS

- 5.00 mm and 6.35 mm pitch
- 2 to 8 total dual blade contacts
- 30 Amp signal/power combo with 4 total power, and 16 or 24 Tiger Eye™ signal positions
- 10 - 16 AWG wire
- Polarized with a rugged latching system
- Single or double ended
- Vertical and right-angle mating headers

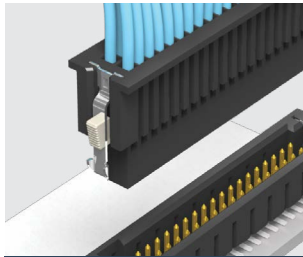
MAX
40
A m p s



Components (IMS5/CC46L/CC46R, IMSC5/CC81L/CC81R, IPS6/CC10L/CC10R) and tooling available for flexible applications; visit samtec.com/tooling

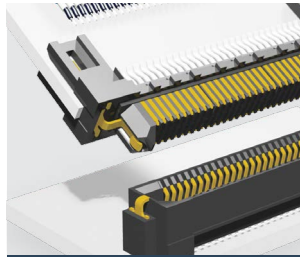
RUGGED FEATURES & CUSTOM SOLUTIONS

RUGGEDIZING OPTIONS



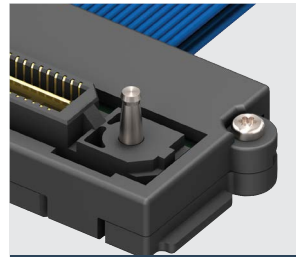
POSITIVE LATCHING

Manually activated latches increase unmating force by up to 200%



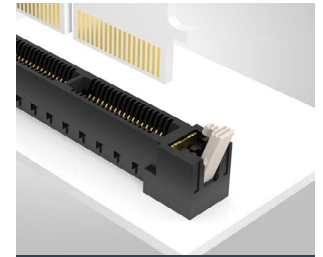
FRICTION LOCKS

Metal or plastic friction locks increase retention/withdrawal force



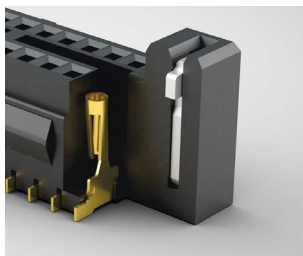
RETENTION PINS

Increase unmating force by up to 50%



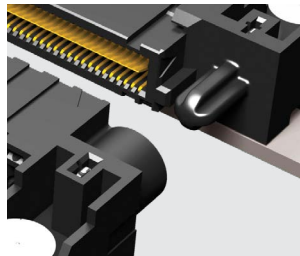
BOARD LOCKS

Boards are mechanically locked together



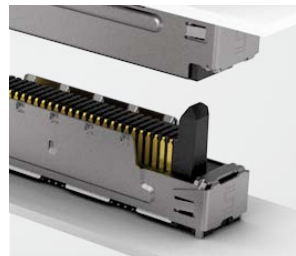
WELD TABS

Significantly increase shear resistance of connector to PCB



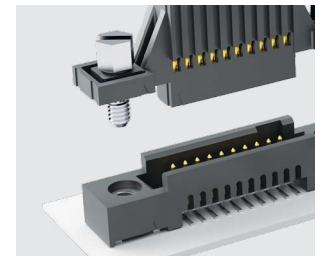
GUIDE POSTS

Easy and secure mating



SHIELDING

360° shielding reduces EMI



SCREW DOWNS

Secure mechanical attachment to the board

CONTACT SYSTEMS

TIGER™ EYE CONTACT



- High-reliability
- High Mating Cycles
- Multi-finger Contact

TIGER™ CLAW CONTACT



- Dual Wipe Contact
- Pass-through Applications
- Ultra-low Profile

BLADE & BEAM CONTACT



- Mating/Alignment "Friendly"
- Cost-effective
- Micro Pitch

TIGER™ BEAM CONTACT



- Best Cost
- Reliable Performance
- Post & Beam Contact

EDGE RATE CONTACT



- Designed for Signal Integrity
- Superior Impedance Control
- Reduced Broadside Coupling

MICRO-HYPERBOLOID



- High-reliability
- Four Points of Contact
- Extreme Mating Cycles

WILLINGNESS, SUPPORT AND EXPERTISE

Industry-Leading Customer Service

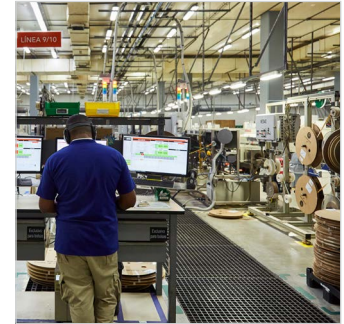
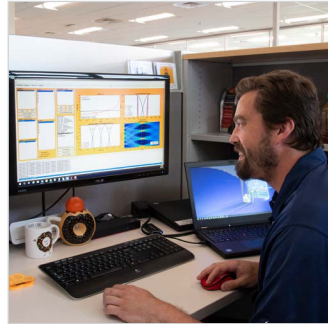
- Quotes and samples in 24 hours
- Prototype and processing assistance
- Dedicated Application Specific Product engineers and technicians

Flexible, In-House Manufacturing

- Global Operations, including multiple cable fabrication & assembly facilities
- Quick-turn samples and prototypes
- Custom & modified product support

Signal Integrity Expertise

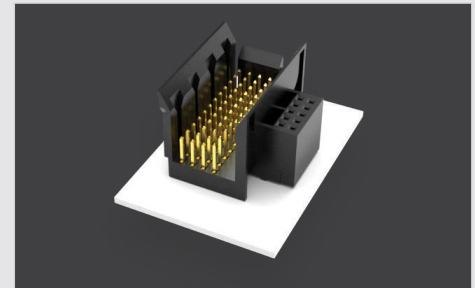
- Industry-leading engineering support for high-performance system design
- Full system optimization assistance, including simulation, testing, analysis and evaluation



CUSTOMS & EXPRESS MODIFICATIONS

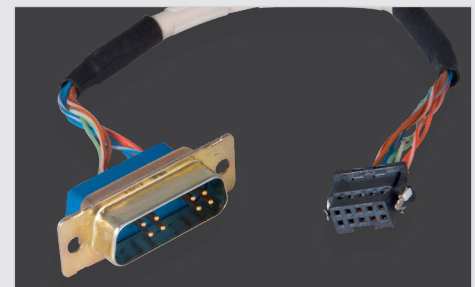
FLEXIBLE RUGGED SOLUTIONS

- Contacts and bodies
- Stamping, plating and molding
- Wiring
- Strain relief
- Screw downs
- Latches & locks
- Shielding modifications
- Polarization



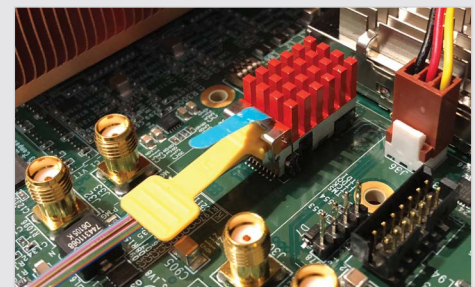
FLEXIBLE DISCRETE WIRE SOLUTIONS

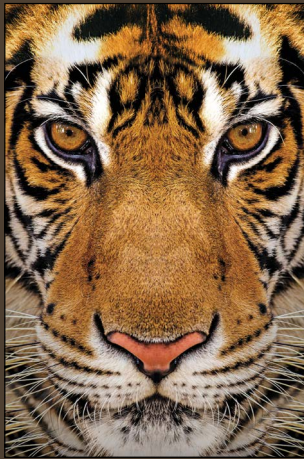
- Variety of end 2 options
- Nylon woven sleeves
- Twisted pairs, color coding
- Heat shrink
- Selectively populated
- Barrel or harness crimp
- Ring/spade lug terminal
- Sealed



OPTICS FOR EXTREME ENVIRONMENTS

- Parylene coating
- Salt-fog impenetrable
- Mitigation for tin whiskers
- Fungal resistant
- Extreme shock and vibration
- Full support for liquid immersion cooling





samtec
SUDDEN SERVICE®

UNITED STATES • NORTHERN CALIFORNIA • SOUTHERN CALIFORNIA • SOUTH AMERICA • UNITED KINGDOM
GERMANY • FRANCE • ITALY • NORDIC/BALTIC • BENELUX • ISRAEL • INDIA • AUSTRALIA / NEW ZEALAND
SINGAPORE • JAPAN • CHINA • TAIWAN • HONG KONG • KOREA

[samtec.com/discretewire](https://www.samtec.com/discretewire)