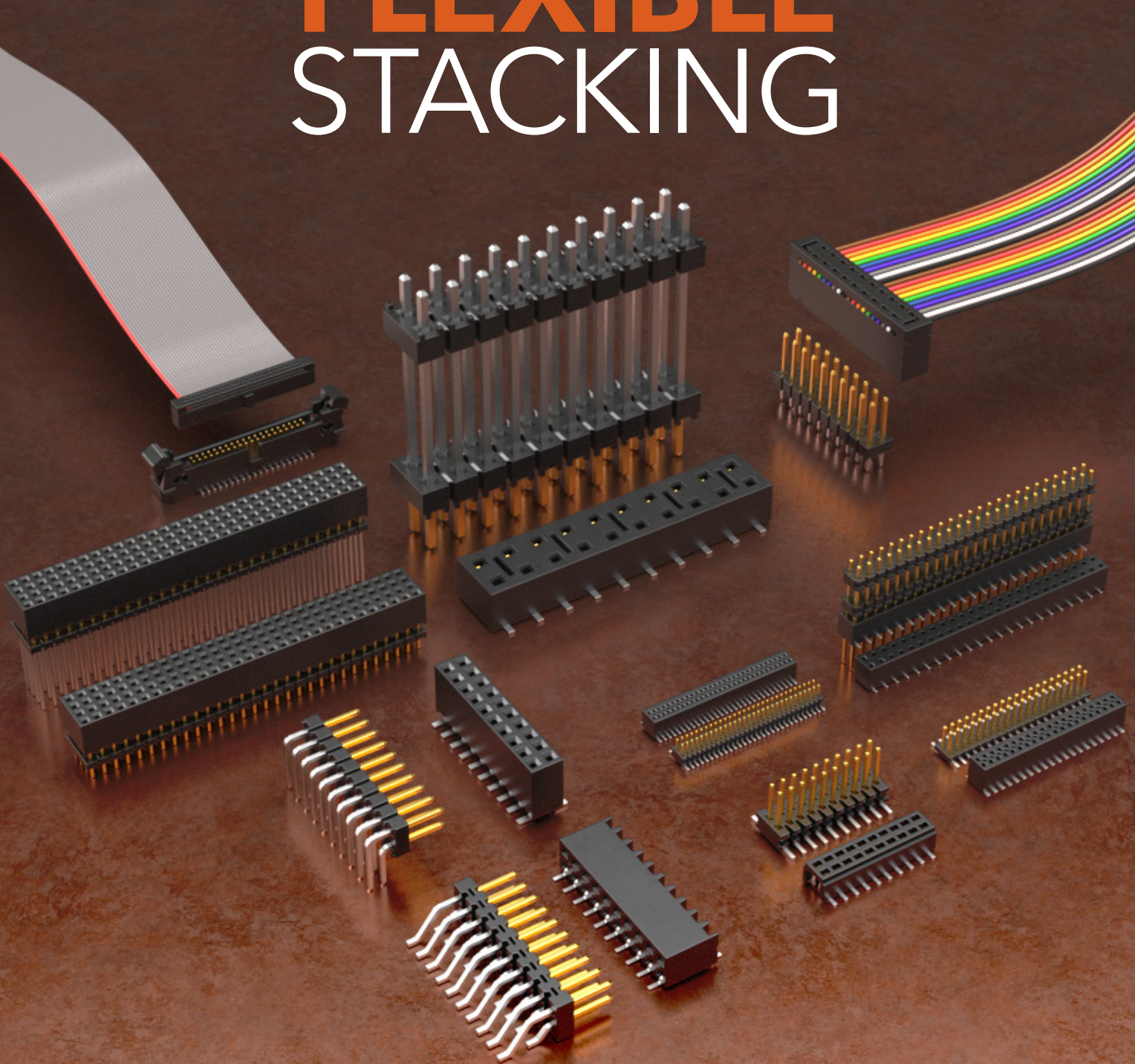


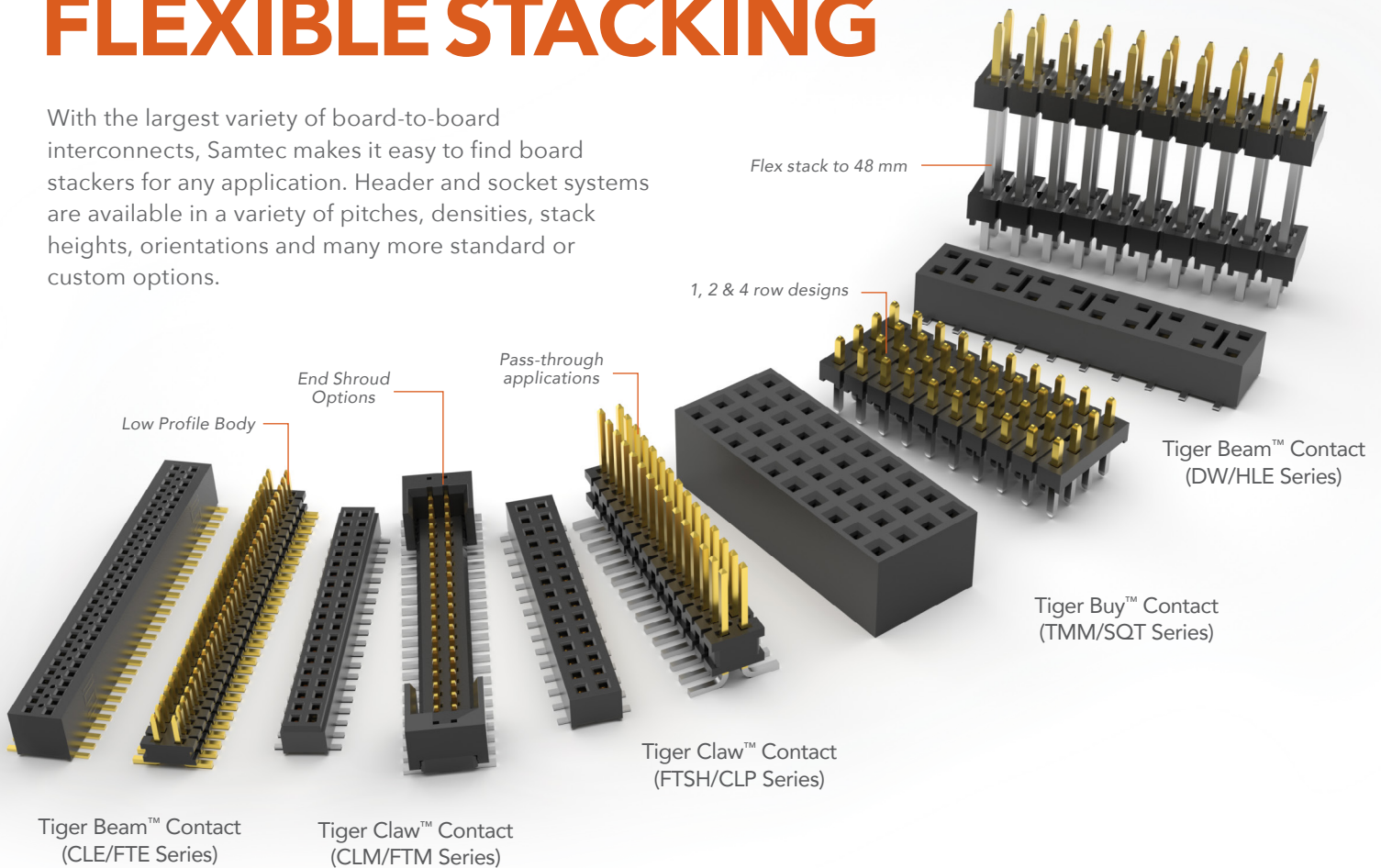


FLEXIBLE STACKING



FLEXIBLE STACKING

With the largest variety of board-to-board interconnects, Samtec makes it easy to find board stackers for any application. Header and socket systems are available in a variety of pitches, densities, stack heights, orientations and many more standard or custom options.



INCREDIBLE FLEXIBILITY

- Post height: Adjustable in .005" (0.13 mm) increments
- Body positions: Adjustable in .005" (0.13 mm) increments
- Board stacking distance: 1.65 mm (.065") – 48.51 mm (1.910")
- Number of pins: 2-300
- Number of rows: 1-6

CUSTOMIZABLE

- Mix-and-match headers and sockets to find the right solution
- Quick and easy custom parts are available. Contact asp@samtec.com

VARIETY OF PITCHES

- 0.80 mm (.0315")
- 1.00 mm (.0394")
- .050" (1.27 mm)
- .050" x .050" (1.27 x 1.27 mm)
- .050" x .100" (1.27 x 2.54 mm)
- 2.00 mm (.0787")
- .100" (2.54 mm)
- .156" (3.96 mm)
- .200" (5.08 mm)

BUILD IT YOURSELF

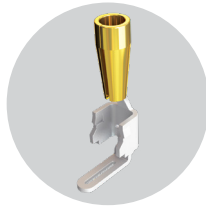
Check out the Flex Stacking Solutionator® to quickly build a mated set for your specific application. Visit samtec.com/flex-solutionator

Solutionator® **FLEX**
GET A MATED SET IN SECONDS STACKING

VARIETY OF CONTACTS

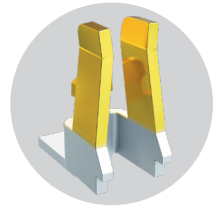
TIGER EYE™ CONTACT

- High-reliability
- High mating cycles
- Multi-finger contact



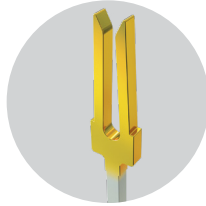
TIGER CLAW™ CONTACT

- Pass-through
- Ultra-low profile
- Dual wipe contact



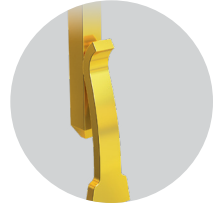
TIGER BUY™ CONTACT

- High-retention
- Cost-effective
- Tuning fork contact

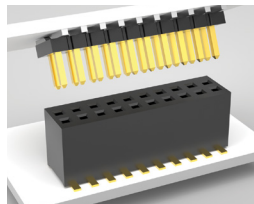


TIGER BEAM™ CONTACT

- Best cost
- Reliable performance
- Post & beam contact

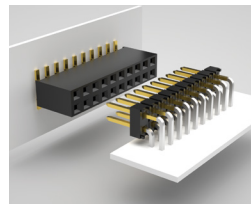


VARIETY OF ORIENTATIONS/APPLICATIONS



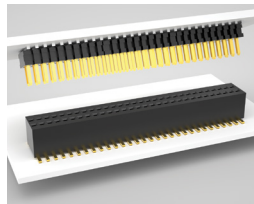
Standard

- Choice of contact system
- Single, double and triple row designs
- Largest variety



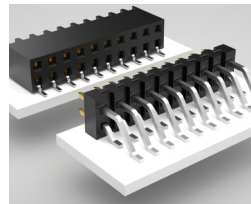
Right-Angle

- Design flexibility
- Tiger Claw™ & Tiger Buy™ contacts
- Through-hole, surface mount



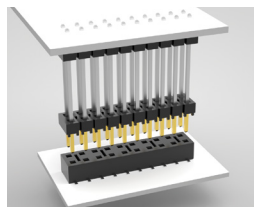
Low Profile

- Down to 1.65 mm (.065") stack height
- Tiger Claw™ contacts
- Space saving



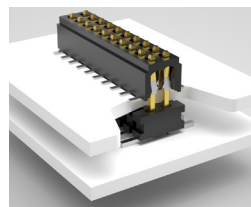
Coplanar

- 1-4 row designs
- Surface mount, through-hole or mixed technology
- Tiger Claw™ & Tiger Beam™ contacts



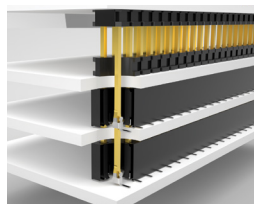
Elevated

- Up to 48.51 mm (1.910") stack height
- Design flexibility
- Clearance, air flow



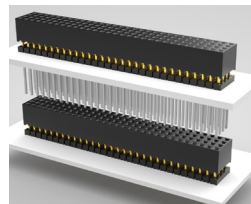
Bottom Entry

- Tiger Claw™ contacts
- Access to components when mated
- Space savings



Pass-Through

- Connect three or more boards
- Tiger Claw™ & Tiger Beam™ contact systems
- Surface mount or offset through-hole



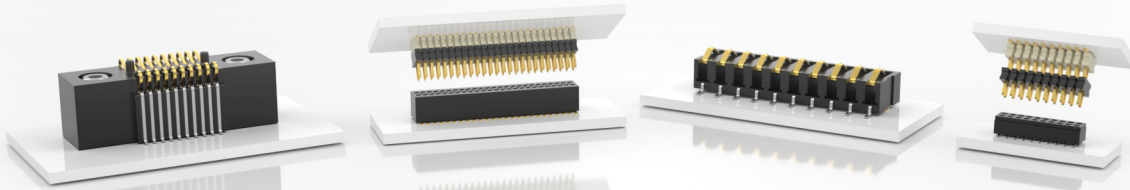
Self-Nesting

- Tiger Buy™ contacts
- Press-fit or through-hole tails
- PC/104-Plus™ embedded applications

BOARD STACKING REFERENCE

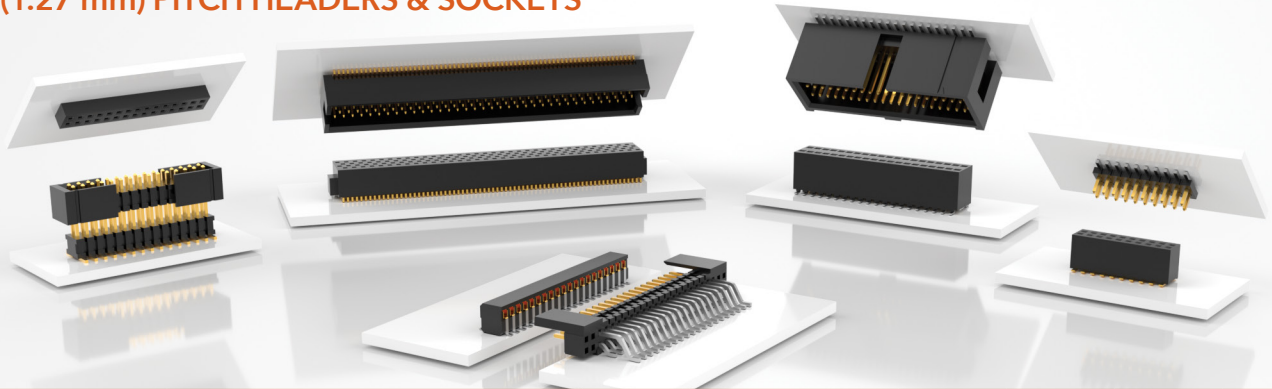
Focused/most popular series in charts. For all flexible stacking solutions, visit samtec.com/connectors

ONE-PIECE, 0.80 mm (.0315") & 1.00 mm (.0394") PITCH



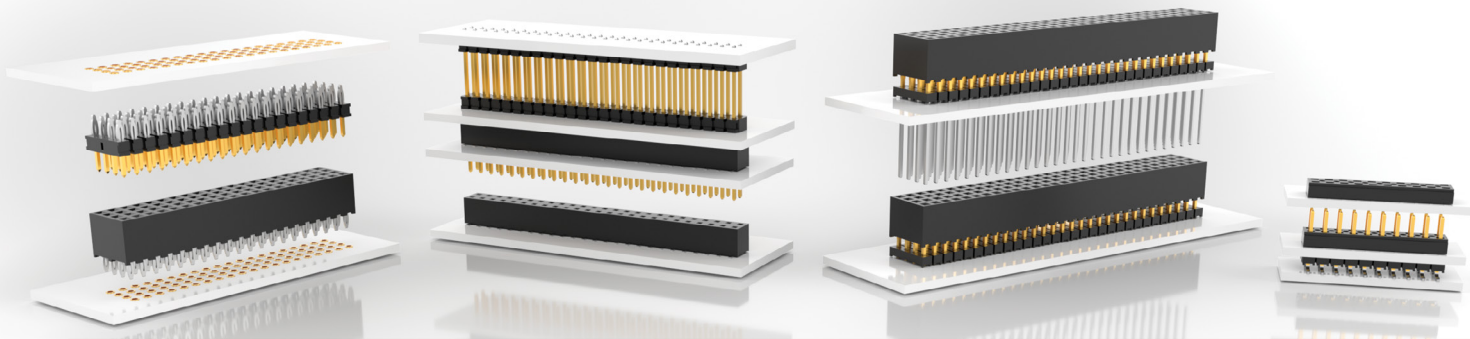
SERIES	FSI	SEI	SIB	CLE	FTE	CLM	FTMH/FTM	MLE	MW	
PITCH	1.00 mm (.0394")		.100" (2.54 mm)	0.80 mm (.0315")		1.00 mm (.0394")				
ORIENTATION	V			V & RA		V	V & RA	V		
BOARD STACKING (MM)	MIN	3	1.65	3.8	5	5	3.48		4.57	4.62
	MAX	10			9.14		8.43	5.11	9.27	
CONTACT SYSTEM				Tiger Beam™		Tiger Claw™		Tiger Beam™		
MATES	One-Piece			FTE, AW	CLE	FTM, FTMH, MW	CLM, MLE	FTM, FTMH, MW	CLM, MLE	

.050" (1.27 mm) PITCH HEADERS & SOCKETS



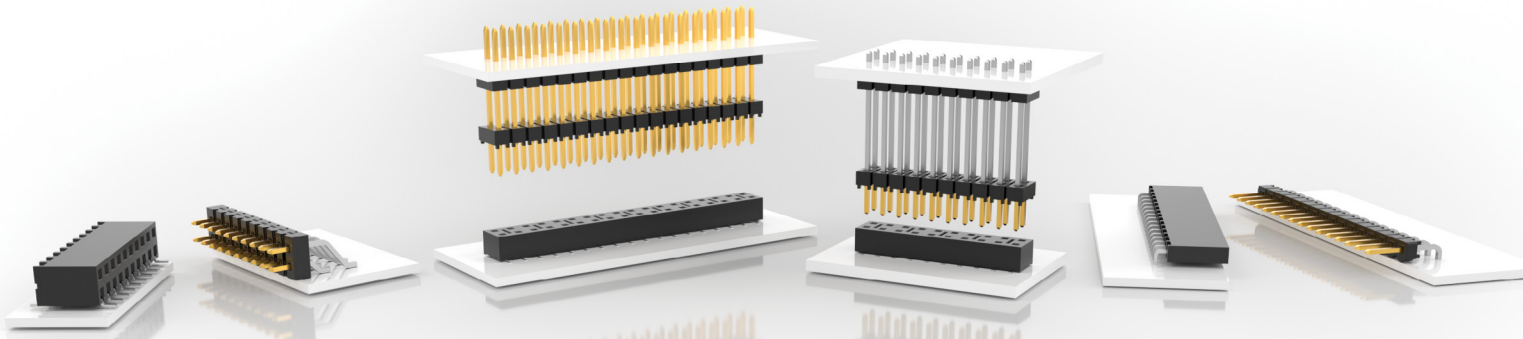
SERIES	CLP	FLE	FTS	FTSH	FW	SOLC	TOLC	DWM/HDWM	FTR	RSM	SLM
PITCH	.050" x .050" (1.27 mm x 1.27 mm)							.050" x .100" (1.27 mm x 2.54 mm)			
ORIENTATION	V & RA	V		V & RA	V						
BOARD STACKING (MM)	MIN	3.53	5.82	3.53	5.18	7.72	6.35	9.65	9.78		7.11
	MAX	17.75	19.15	5.82	7.49	19.15	12.00	22.99	14.73	19.69	19.43
CONTACT SYSTEM	Tiger Claw™	Tiger Beam™				Tiger Buy™					Tiger Buy™
MATES	FTSH, FTS, FW		CLP, FLE			TOLC	SOLC	SMS, SLM, RSM		FTR, HTMS, HDWM, TML, ZML, TMS	HTMS, TMS, MTMS, DWM, HDWM, FTR, HMTMS

2.00 mm (.0787") PITCH HEADERS & SOCKETS



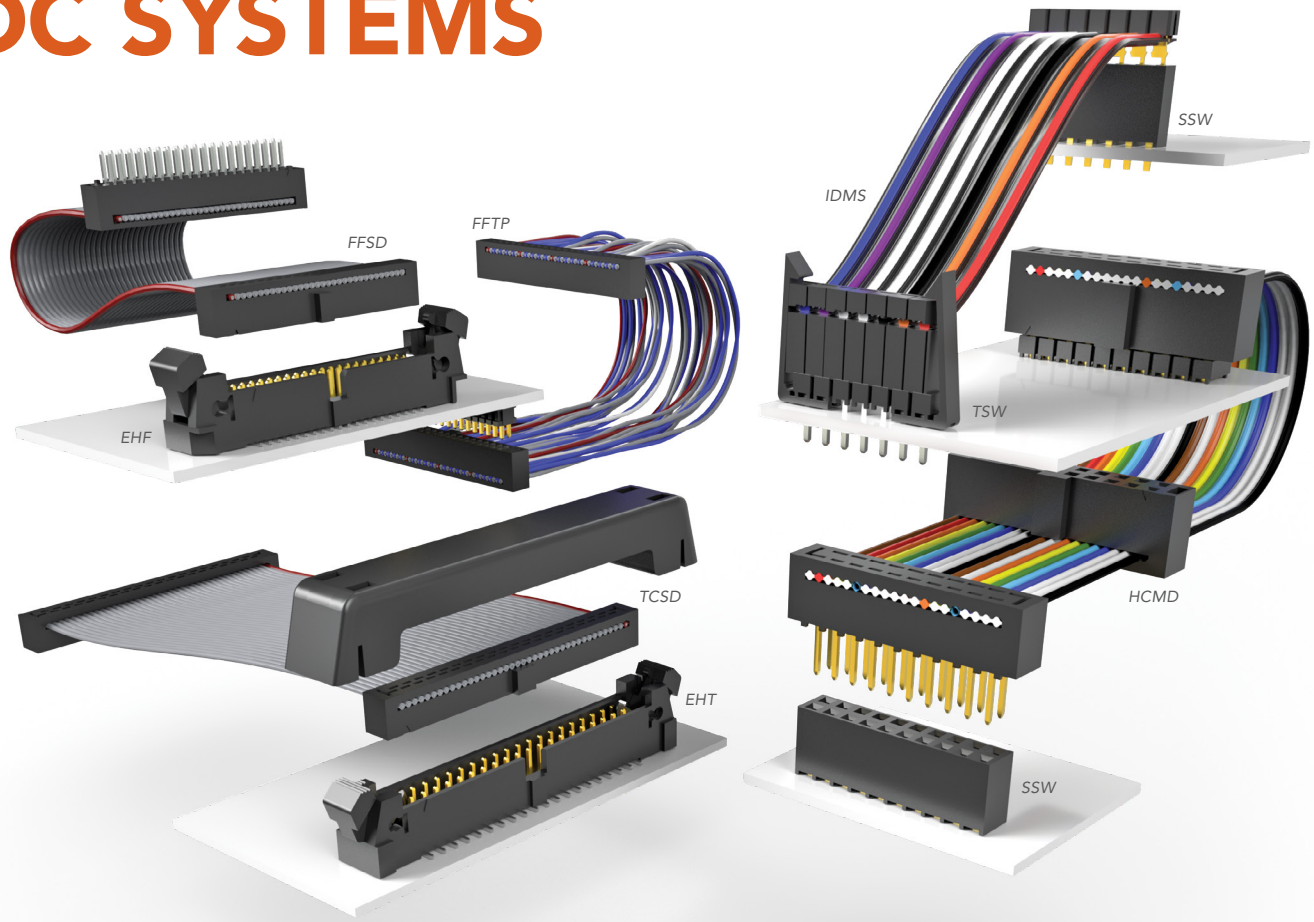
SERIES	MMT	TMM/ MTMM	TMMH	TW	ZLTMM	CLT	ESQT/ -368	MMS	SMM	SQT	SQW	TLE
ORIENTATION	RA	V & RA		V				V & RA	V	V & RA	V	
TERMINATION	SMT & MT	T/H & SMT			T/H	T/H & SMT	T/H	T/H & SMT	SMT	T/H	T/H & SMT	SMT
BOARD STACKING (MM)	MIN	2	3.63	4.14	7.49	7.62	3.63	9.37	5.94	6.07	7.85	6.99
	MAX	4	18.87	22.07	43.31	13.34	4.98	43.31	19.81	17.78	29.59	17.53
CONTACT SYSTEM						Tiger Claw™	Tiger Buy™	Tiger Claw™	Tiger Eye™	Tiger Buy™		Tiger Beam™
MATES	CLT, SQT, SQW, ESQT, TLE, SMM, MMS				SQT, SQW, ESQT, SMM	TMM, TMMH, MTMM, MMT, TW, TSH	TMMH, TMM, MTMM, MMT, TW, LTMM, ZLTMM, ESQT, PTT, TSH, TMMs, PTHF	TMMH, TMM, MTMM, MMT, TW, LTMM, TW, PTT, ZLTMM	TMM, TMMH, MTMM, MMT, LTMM, TW, PTT, ZLTMM	TMMH, TMM, MTMM, MMT, TW, TSH, LTMM, PTT	TMMH, TMM, MTMM, MMT, TW, TSH, LTMM, PTT	TMMH, TMM, MTMM, MMT, TW, LTMM, ZLTMM, TSH

.100" (2.54 mm) PITCH HEADERS & SOCKETS



SERIES	DW, EW, ZW	HW	MTSW/ HMTSW	TLW/ MTLW	TSM	TSW/ HTSW	BCS	ESW, ESQ	HLE	SSM	SSQ	SSW
ORIENTATION	V		V & RA				V & RA	V		V & RA		
TERMINATION	T/H	T/H & SMT	T/H		SMT & MT		T/H		T/H & SMT	SMT	T/H	T/H & SMT
BOARD STACKING (MM)	MIN	13.59	10.03	7.24	6.1	7.47	7.87	9.02	13.59	7.47	11.18	10.03
	MAX	48.51	30.73	46.36	20.96	14.48	35.69	18.92	48.51	26.16	30.1	38.35
CONTACT SYSTEM							Tiger Claw™	Tiger Buy™	Tiger Beam™	Tiger Claw™	Tiger Buy™	
MATES	SSW, SSQ, ESW, ESQ, CES, SLW, BSW, BCS, SSM, HLE, PHF		SSW, SSQ, ESW, ESQ, BCS, BSW, CES, SLW, HLE, SSM	BSW, CES, SLW, HLE	SSW, SSQ, SSM, BSW, ESW, ESQ, BCS, SLW, CES, HLE	SSW, SSQ, SSM, ESW, ESQ, BCS, BSW, CES, SLW	TSW, MTSW, HTSW, HMTSW, TSS, ZSS, ZSS, DW, EW, ZW, HW, TSM, MTLW, PHT	TSW, MTSW, EW, MTLW, TSS, ZSS, TSM, DW, ZW, HW, TSSH, HTSS	TSW, MTSW, DW, EW, ZW, TLW, TSM, MTLW, HW	TSW, MTSW, TST, TSS, ZST, ZSS, DW, EW, ZW, TSM, HMTSW, HTSW, TSSH, BST, HTSS, TLW, MTLW	TSW, MTSW, MTLW, EW, ZW, TSS, ZSS, TSM, TSSH, HTSS	TSW, MTSW, HTSW, HMTSW, MTLW, EW, ZW, TSS, ZSS, TSM, TSSH, HTSS, DW, HW

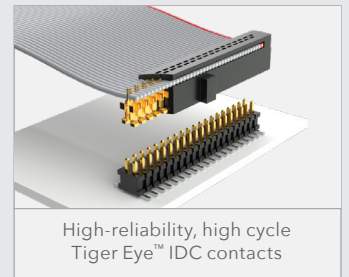
IDC SYSTEMS



.050" & 2.00 mm PITCH IDC SYSTEMS



- Exceptionally low-profile design
- Choice of socket and plug terminations
- Single or double ended
- Twisted pair or flat cable
- Tiger Eye™ board level mates
- Mating shrouded and ejector terminal strips
- Variety of options including rugged strain relief, polarization and standard wiring configurations



FLEXIBLE FLAT RIBBON IDC SYSTEMS

- Low profile with no bulky side locks
- Choice of dual beam socket or plug terminations

MOLDED-TO-POSITION IDC ASSEMBLIES

- Low profile and skinny side locks
- Plugs with .025" (0.64 mm) square tail headers

IDC CABLE ASSEMBLIES & HEADERS

IDMX/IDSX	HCMX/HCSX	TCSD/TCMD	FFSD/FFMD	FFTP/FMTP
.100" (2.54 mm) pitch		2.00 mm (.0787") pitch	.050" (1.27 mm) pitch	
28 AWG Color Coded (standard) or Gray (optional)		28 AWG Gray	30 AWG Gray	30 AWG Twisted Pair
Mates: HTST/TST/ZST/EJH	Mates: TST/ZST/EJH	Mates: STMM/ETMM/EHT	Mates: SHF/ESHF/EHF	Mates: SHF/EHF
Dual Beam Contacts		Tiger Eye™ Contacts		
Low Profile & Slim Body	Low Profile	Strain Relief Available		



samtec
SUDDEN SERVICE®

UNITED STATES • NORTHERN CALIFORNIA • SOUTHERN CALIFORNIA • SOUTH AMERICA • UNITED KINGDOM
GERMANY • FRANCE • ITALY • NORDIC/BALTIC • BENELUX • ISRAEL • INDIA • AUSTRALIA / NEW ZEALAND
SINGAPORE • JAPAN • CHINA • TAIWAN • HONG KONG • KOREA

[samtec.com/flexiblestacking](https://www.samtec.com/flexiblestacking)