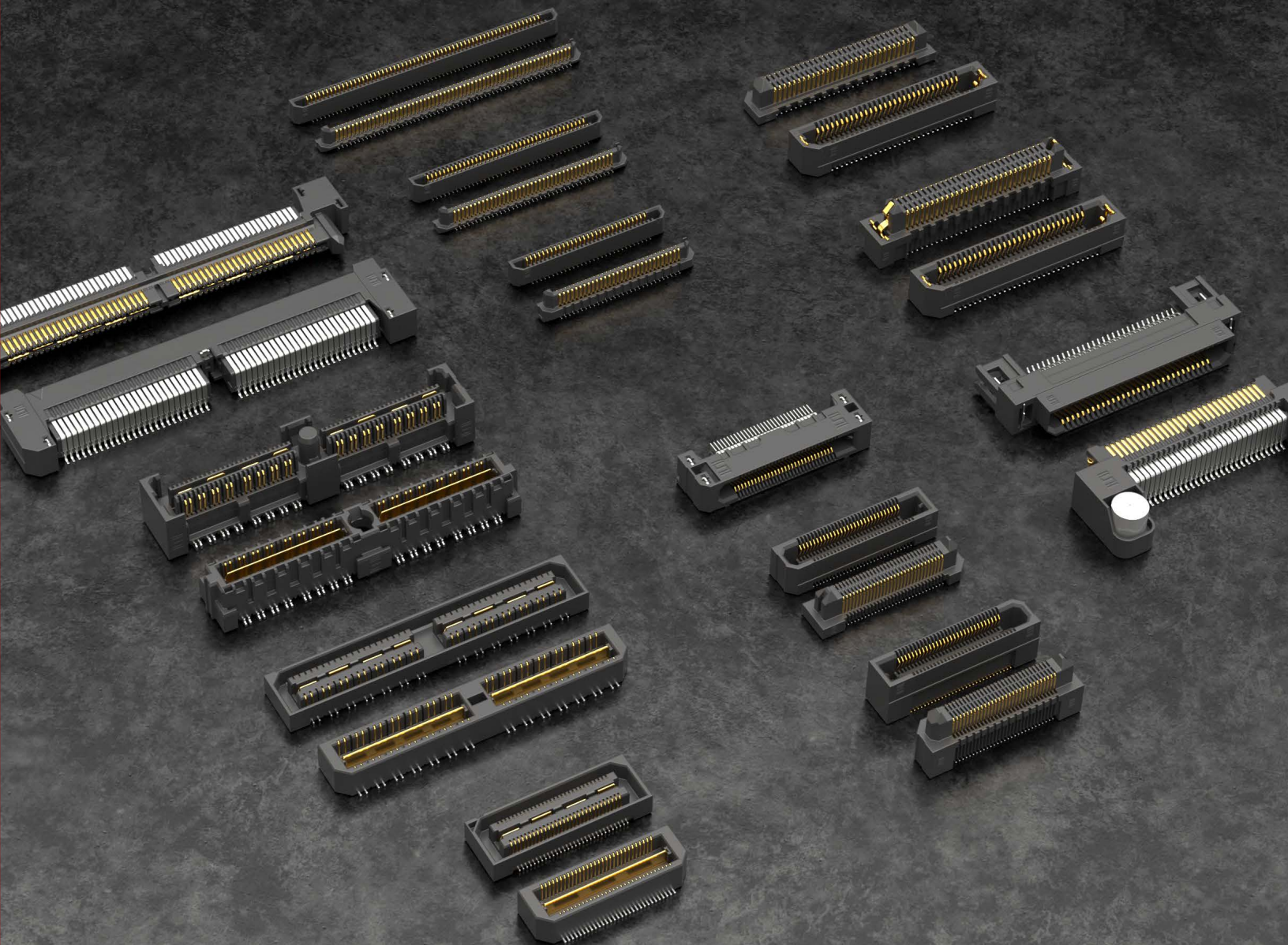
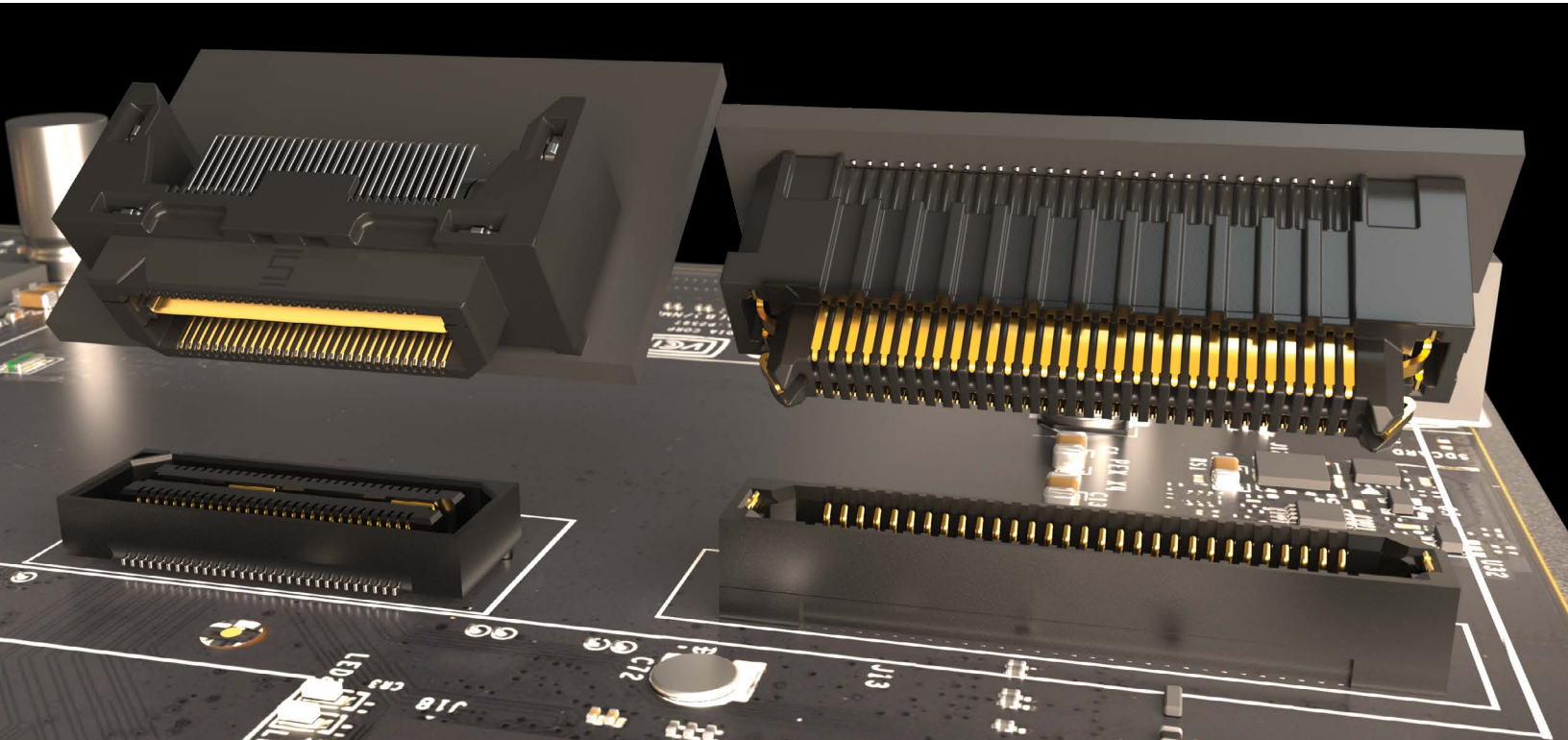




HIGH-SPEED DUAL ROW STRIPS



DUAL ROW STRIPS

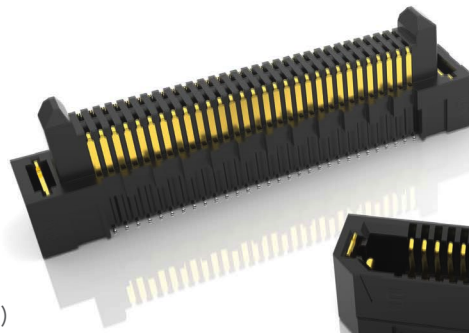


EDGE RATE® 0.80 mm PITCH SYSTEM

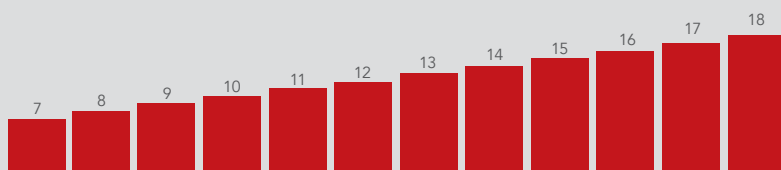
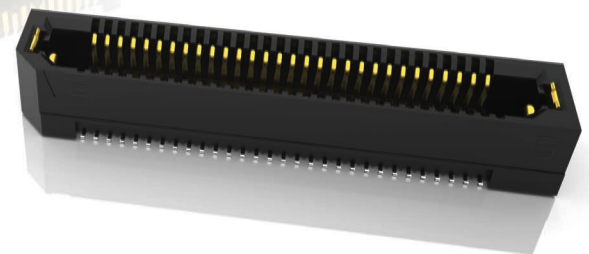
EDGE
RATE
SYSTEM

PAM4
56
Gbps

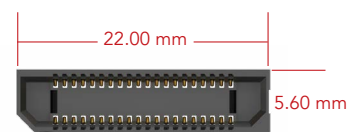
- Up to 200 positions with a 1.5 mm contact wipe
- Differential pair, hot swap, latching, shielding and extended guide post options
- Supports high-speed protocols including Ethernet and PCI Express®
- Right-angle, edge mount and cable mate (ERCD) available
- SureWare™ guide post standoffs (GPSO/GPSOM) available
- Severe Environment Testing qualified (ERM8/ERF8); aligns with MIL-DTL-55302. Visit samtec.com/set



ERM8/ERF8



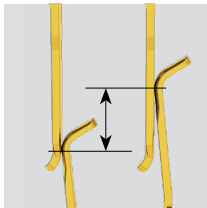
Stack height flexibility (shown in mm)



ERF8 Series; 40 pins

EDGE RATE® 0.635 mm PITCH SYSTEM

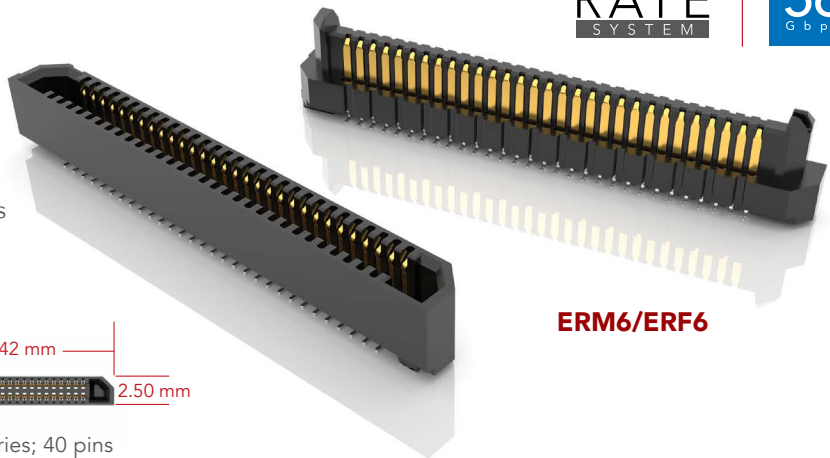
- Extremely slim 2.5 mm body width
- Up to 120 positions in a 2-row design
- 5 mm low profile stack height
- J lead for standard processing
- Optional weld tabs; standard alignment pins



0.90 mm (.035")
contact wiper



ERF6 Series; 40 pins

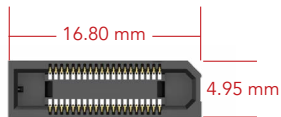


ERM6/ERF6

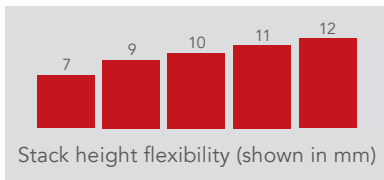


EDGE RATE® 0.50 mm PITCH SYSTEM

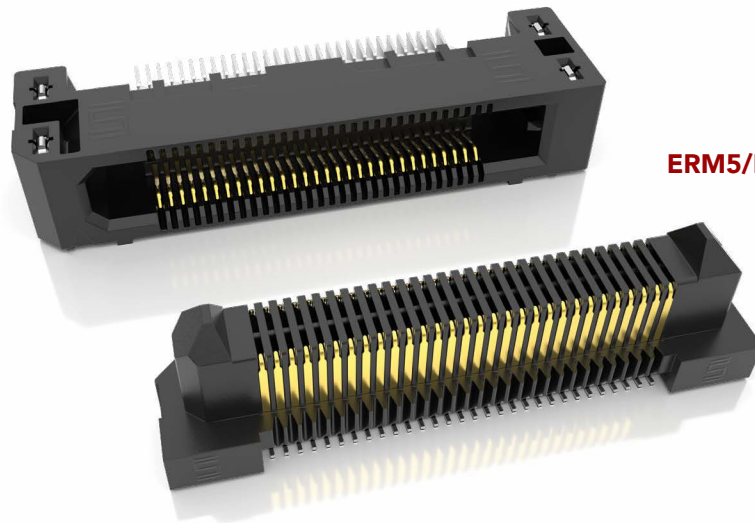
- 1.00 mm contact wiper
- Up to 40% PCB space savings with 0.50 mm pitch vs. 0.80 mm pitch
- Stack heights from 7 mm to 12 mm
- 20 to 150 total positions
- Right-angle socket available (ERF5-RA)



ERF5 Series; 40 pins



Stack height flexibility (shown in mm)



ERM5/ERF5-RA



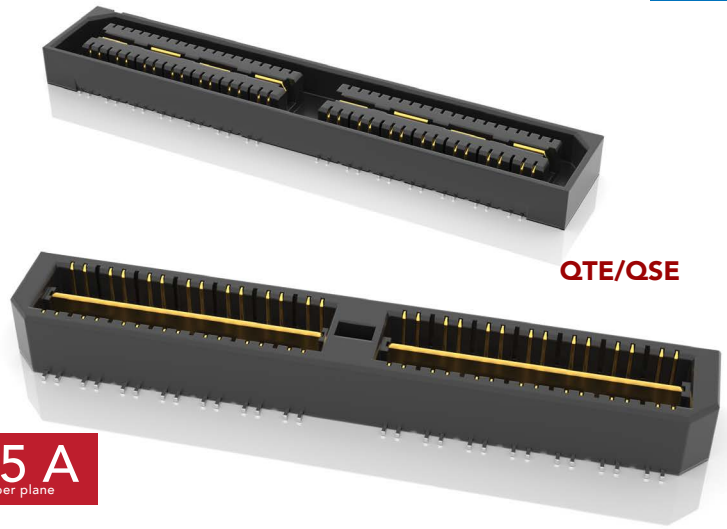
EDGE RATE® CONTACT SYSTEM

- Smooth milled mating surface reduces wear and increases durability
- Lower insertion and withdrawal forces
- Robust when “zippered” during unmating
- Minimized parallel surface area reduces broadside coupling and crosstalk
- Designed, simulated and optimized for 50 Ω and 100 Ω systems



LOW PROFILE GROUND PLANE CONNECTORS

- 0.50 mm, 0.635 mm and 0.80 mm pitch
- Performance to 21 Gbps (QXH), 25 Gbps (QXS) and 28 Gbps (QXE)
- 5 mm to 30 mm stack heights
- Integral ground/power plane
- Single-ended or differential pairs
- Right-angle, edge mount and cable mates (see page 27) available
- Extended Life Product™ high mating cycle connectors; test reports available at samtec.com/elp
- 0.50 mm pitch connectors (QTH/QSH) are compliant to the PISMO™ 1 standard; visit samtec.com/standards



QTE/QSE

25 A
per plane



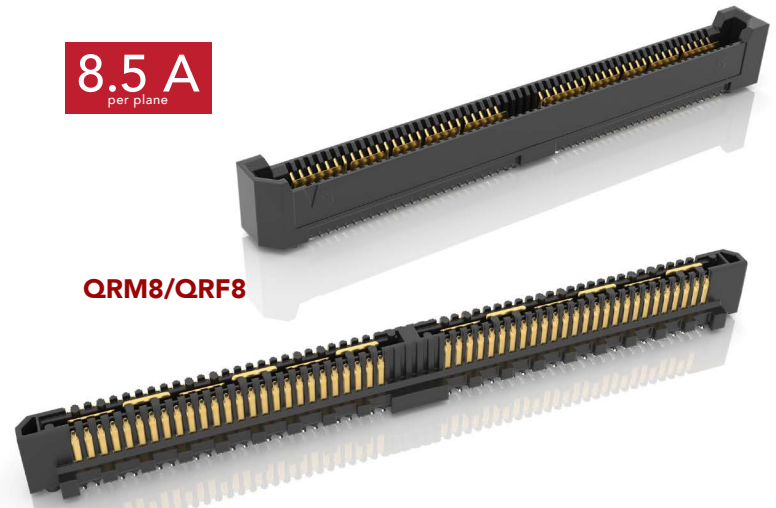
SureWare™ right-angle guide posts available to assist with blind mating (GPSK/GPPK)

SLIM GROUND PLANE CONNECTORS

- 0.80 mm pitch
- Up to 156 signal pins/54 differential pairs
- Right-angle available for coplanar and perpendicular mating
- 7, 9, 10, 12 and 14 mm stack heights
- Extended Life Product™ high mating cycle connectors (QRM8/QRF8); test reports available at samtec.com/elp



8.5 A
per plane



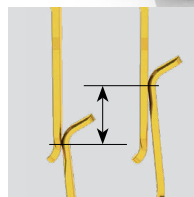
QRM8/QRF8



Slim 4.60 mm body width saves board space



Edge Rate® contacts optimized for superior signal integrity performance



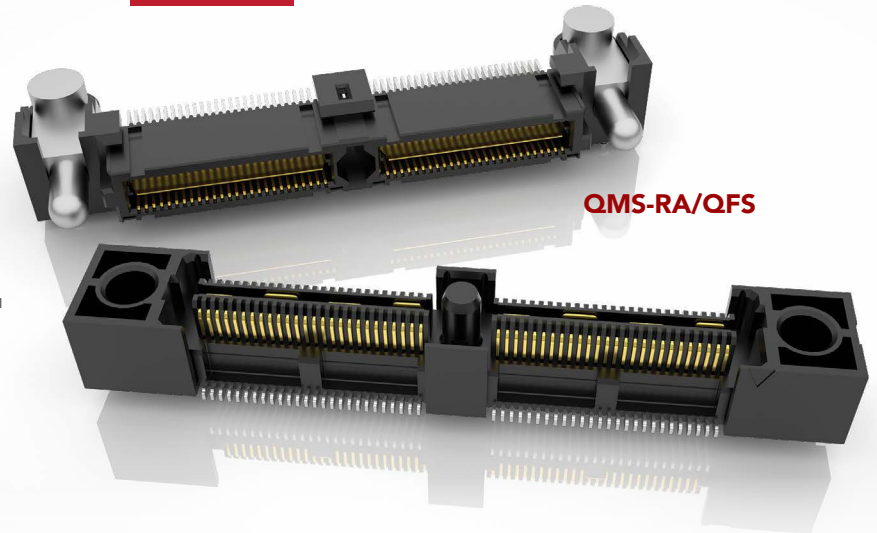
1.20 mm (.047") contact wiper

RUGGED GROUND PLANE CONNECTORS

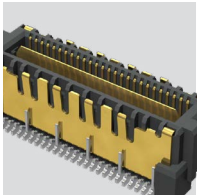


- 0.635 mm pitch and 1.60 mm contact wipe
- Increased insertion depth for rugged applications
- Up to 156 signal pins/48 signal pairs standard
- Vertical, right-angle and edge mount
- EMI shielded systems available (QMSS/QFSS)
- 10 to 16 mm stack heights
- Optional integral power pins available; rated at 4 Amps
- SUMIT™, PCI/104-Express™ and PCI/104-Express™ OneBank compliant (QMS/QFS); visit samtec.com/standards

15.7 A
per plane

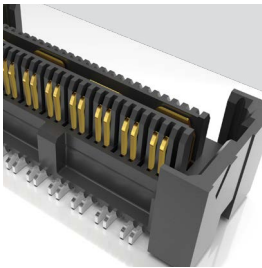


QMS-RA/QFS

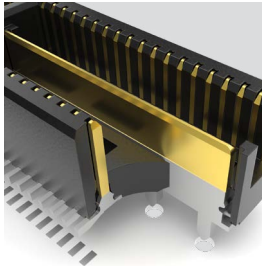


EMI shielded systems available (QMSS/QFSS)

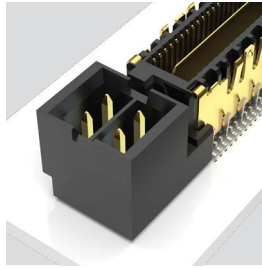
FEATURES



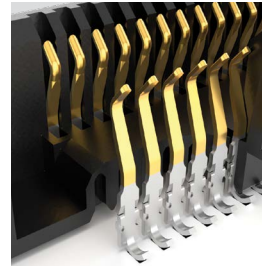
Differential pairs reduce noise



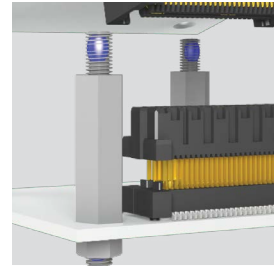
Mixed technology (MIT/MIS)



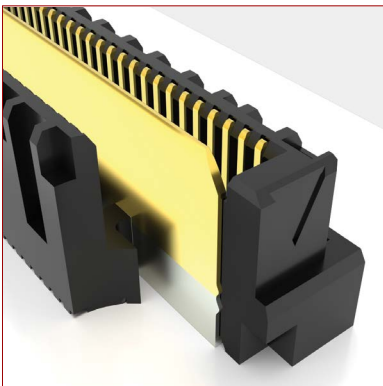
Options for power & retention



Rugged Edge Rate® contact system



Precision board stacking standoffs



QSERIES®

INTEGRAL GROUND/POWER PLANE

- Surface mount ground plane between two signal rows improves electrical performance
- Significantly reduces row-to-row crosstalk
- Integral metal plane for power to 25 Amps



samtec
SUDDEN SERVICE®

UNITED STATES • NORTHERN CALIFORNIA • SOUTHERN CALIFORNIA • SOUTH AMERICA • UNITED KINGDOM
GERMANY • FRANCE • ITALY • NORDIC/BALTIC • BENELUX • ISRAEL • INDIA • AUSTRALIA / NEW ZEALAND
SINGAPORE • JAPAN • CHINA • TAIWAN • HONG KONG • KOREA

samtec.com/mezzanine