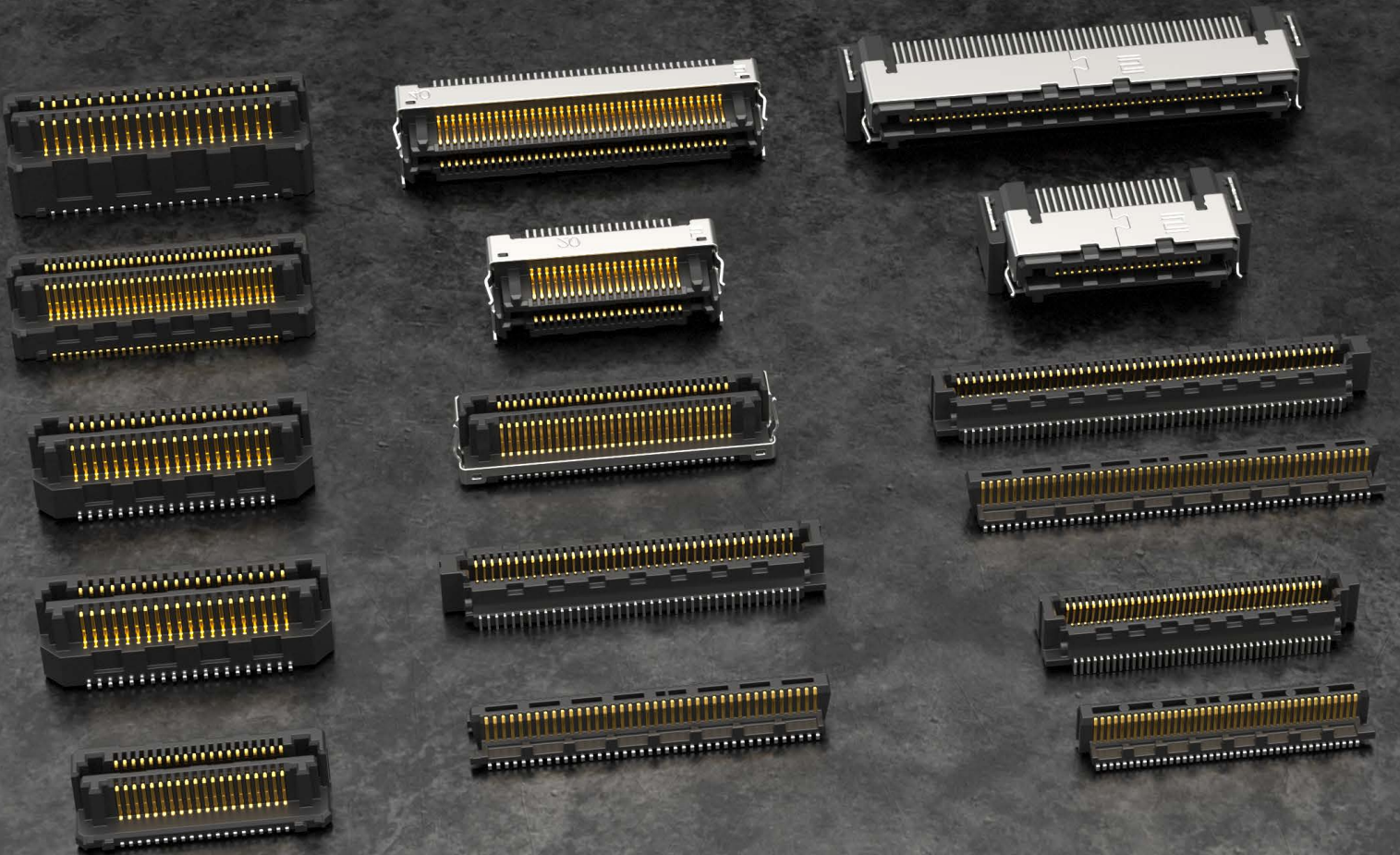
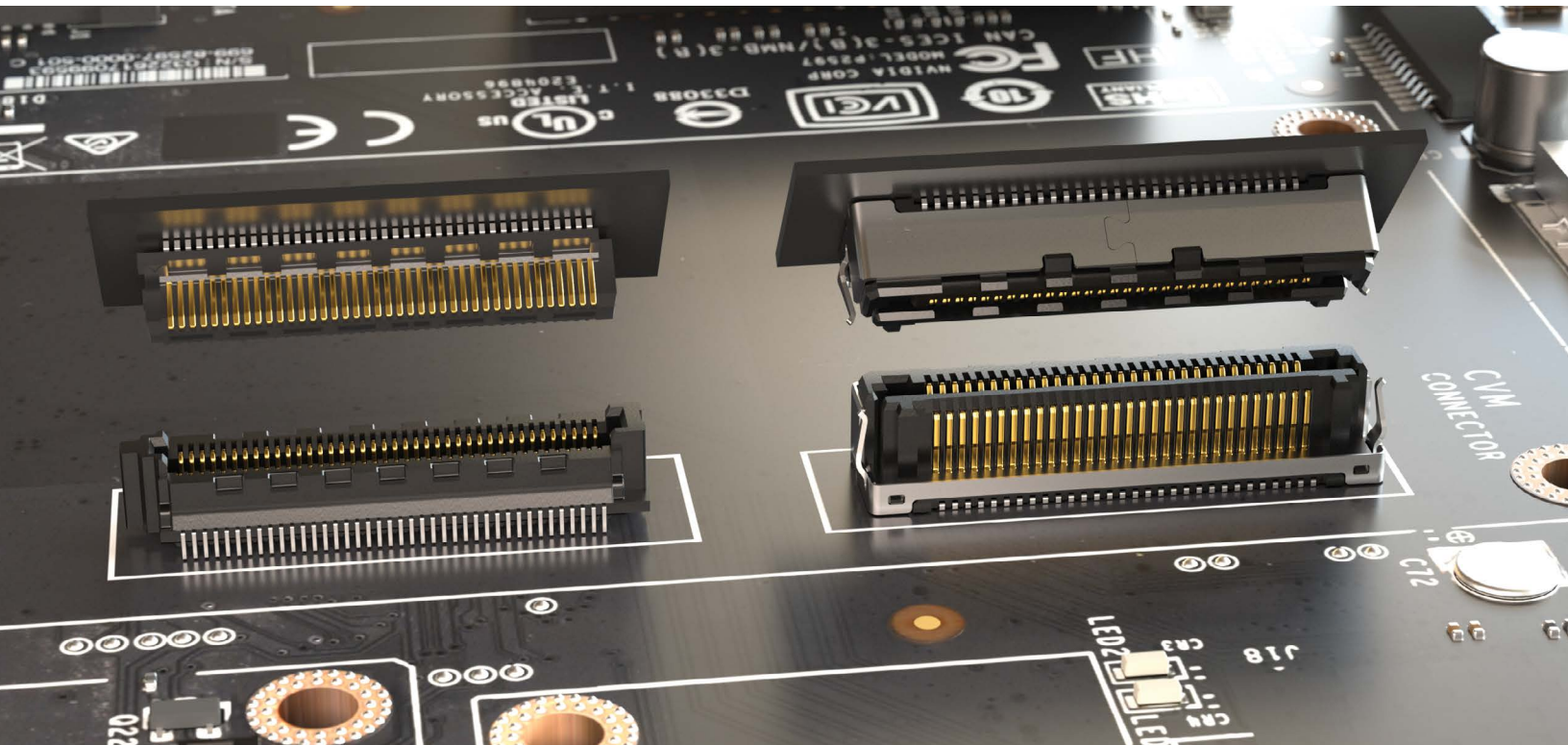




ULTRA MICRO INTERCONNECTS

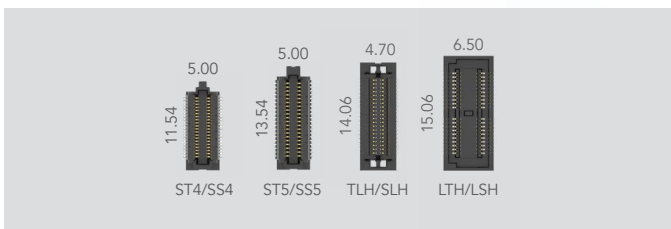
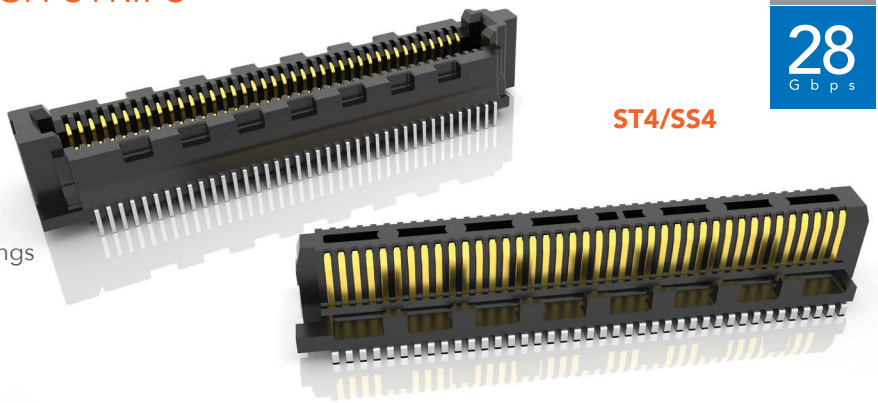


ULTRA MICRO INTERCONNECTS

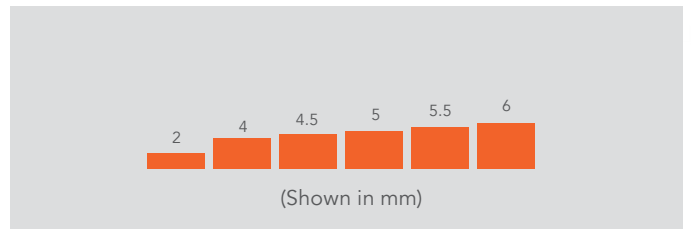


ULTRA MICRO 0.40 mm PITCH STRIPS

- Ultra micro 0.40 mm pitch
- Stack heights from 4 mm to 6 mm
- 20 - 100 positions
- Performance to 28 Gbps NRZ
- Slim body design for increased board savings



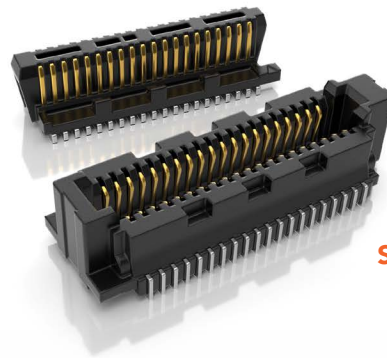
Slim body designs
(40 total positions each)



Ultra low stack height options for space savings

ULTRA MICRO 0.50 mm PITCH STRIPS

- Ultra micro 0.50 mm pitch
- Ultra low mated stack heights down to 4 mm
- 20 - 160 positions
- Performance to 56 Gbps PAM4



ST5/SS5

PAM4
56
Gbps

LOW PROFILE 0.50 mm PITCH STRIPS

- Ultra fine 0.50 mm pitch
- Ultra low mated stack height of 2.31 mm
- 20 - 100 positions
- Performance to 15 Gbps NRZ
- Standard alignment pin
- Optional tape and reel packaging

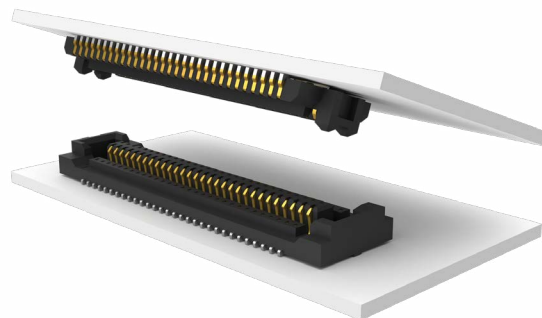


LTH/LSH

NRZ
15
Gbps

ULTRA LOW PROFILE 0.50 mm PITCH STRIPS

- Ultra fine 0.50 mm pitch
- Ultra low mated stack heights down to 2 mm
- 20 - 60 positions
- Performance to 28 Gbps NRZ
- Optional alignment pin

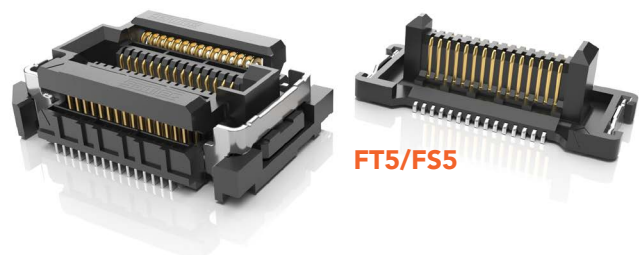


TLH/SLH

NRZ
28
Gbps

HIGH-SPEED 0.50 mm PITCH FLOATING CONTACT SYSTEM

- Ultra fine 0.50 mm pitch
- Stack heights of 5 mm and 7 mm
- 30 - 60 positions
- Performance to 12 Gbps NRZ
- Provides 0.50 mm of float in X & Y directions
- Vertical and right-angle orientations



FT5/FS5

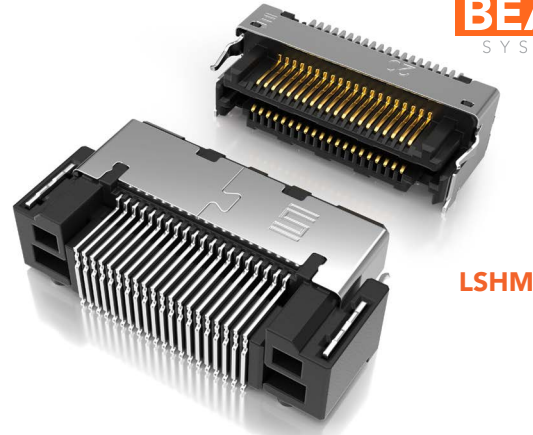
NRZ
12
Gbps

RUGGED 0.50 mm PITCH HERMAPHRODITIC CONNECTORS

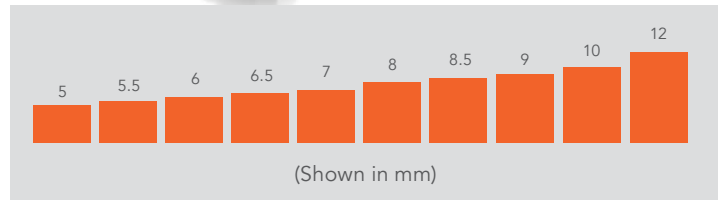
- Razor Beam™ contacts for high-speed and fine pitch systems
- Ultra fine 0.50 mm pitch
- Ten stack height options from 5 mm to 12 mm
- 10 - 100 positions
- Performance to 14 Gbps NRZ
- Parallel, perpendicular and coplanar systems
- Shielded option for EMI protection
- Audible click when mated
- Lubricated option available
- Self-mating system reduces inventory cost
- Mating and unmating forces approximately 4-6x greater than typical micro pitch connectors
- Severe Environment Testing qualified; aligns with MIL-DTL-55302. Visit samtec.com/set
- High-speed cable mate available (HLCD)

RAZOR
BEAM
SYSTEM

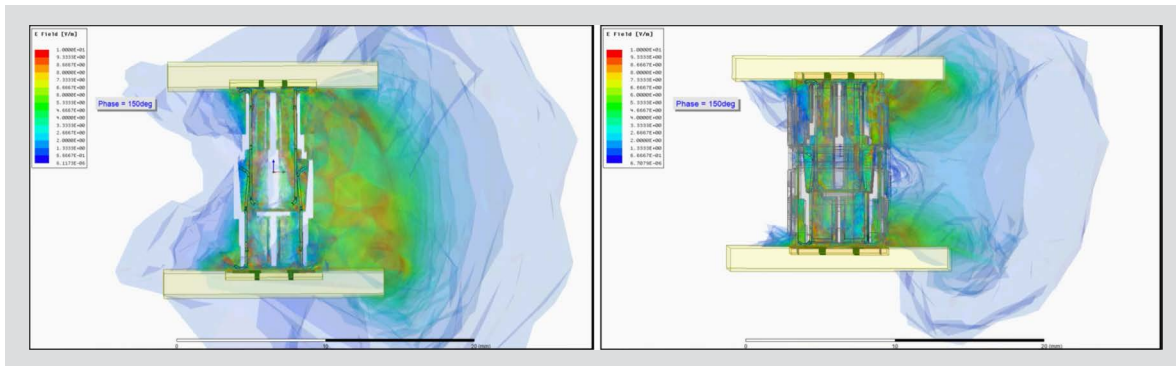
NRZ
14
Gbps



LSHM



Variety of stack heights for greater design flexibility

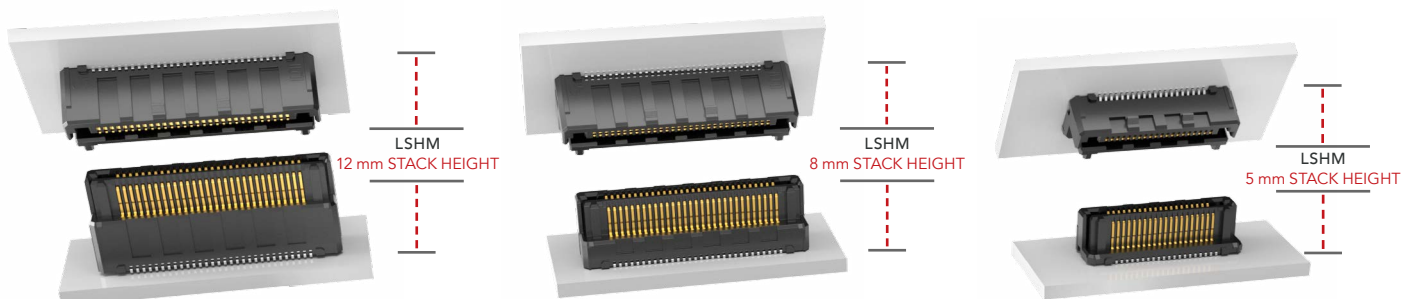


Without EMI Shielding

With EMI Shielding

SELF-MATING

Razor Beam™ self-mating connectors reduce inventory costs and can be interchanged for varying stack heights.

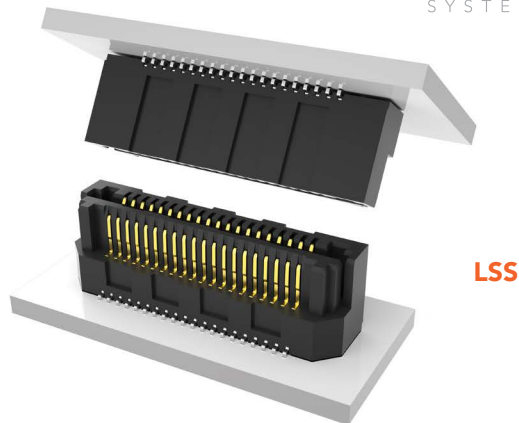


RUGGED 0.635 mm PITCH HERMAPHRODITIC CONNECTORS

- Razor Beam™ contacts for high-speed and fine pitch systems
- Ultra fine 0.635 mm pitch
- Six stack height options from 6 mm to 12 mm
- 10 - 100 positions
- Performance to 25 Gbps NRZ
- Audible click when mated
- Self-mating system reduces inventory cost
- Mating and unmating forces approximately 4-6x greater than typical micro pitch connectors

RAZOR
BEAM
SYSTEM

NRZ
25
Gbps



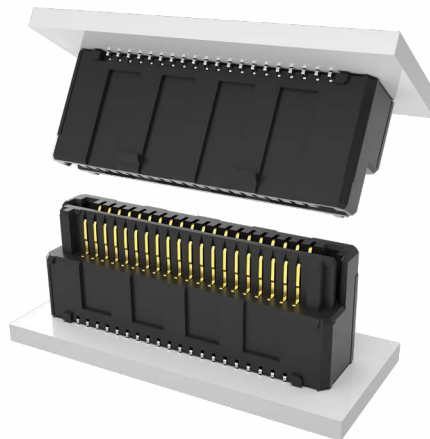
LSS

RUGGED 0.80 mm PITCH HERMAPHRODITIC CONNECTORS

- Razor Beam™ contacts for high-speed and fine pitch systems
- Ultra fine 0.80 mm pitch
- Six stack height options from 6 mm to 12 mm
- 10 - 100 positions
- Performance to 25 Gbps NRZ
- Vertical and right-angle orientations
- Audible click when mated
- Self-mating system reduces inventory cost
- Mating and unmating forces approximately 4-6x greater than typical micro pitch connectors

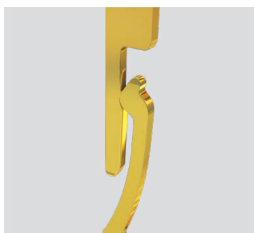
RAZOR
BEAM
SYSTEM

NRZ
25
Gbps

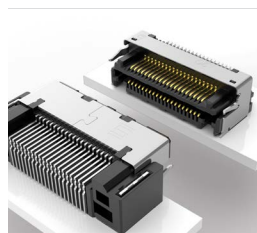


LSEM

RAZOR BEAM™ FEATURES



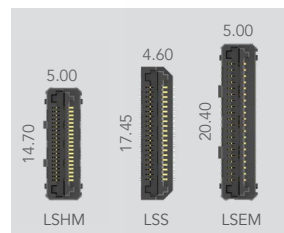
Razor Beam™ contacts for ultra low profile designs



Optional shielding for EMI protection (LSHM)



SureWare™ jack screw standoffs (JSO) assist with unmating



Slim body designs (40 total positions each)



High-speed cable mate available (HLCD)



samtec
SUDDEN SERVICE®

UNITED STATES • NORTHERN CALIFORNIA • SOUTHERN CALIFORNIA • SOUTH AMERICA • UNITED KINGDOM
GERMANY • FRANCE • ITALY • NORDIC/BALTIC • BENELUX • ISRAEL • INDIA • AUSTRALIA / NEW ZEALAND
SINGAPORE • JAPAN • CHINA • TAIWAN • HONG KONG • KOREA

samtec.com/ultra-micro