



tableX

the table experts



VertiGO

VertiGO reaches new heights with a multitude of height adjustable choices and can integrate nesting for simple space reconfigurations. Our Veri battery height adjustable + flip-top nesting provides the ultimate solution for room flexibility.



BATTERY OPERATED
HEIGHT – VERI



SURGE



Surge series offers a thin profile X and disc base with pneumatic adjustable lounge and bistro height options. Contemporary blade-like styling is showcased on training, classroom and collaborative tables. T-bases also available with electric height capabilities.





ARTISAN

Artisan series is all about inspiring creativity. It showcases a 'Maker-style' aesthetic with the table sizes, heights, and added versatility one expects. Available with high-pressure laminate (HPL) or a trendy maple Butcher Block (BB) top. Artisan provides a 500 lb. weight capacity and optional 3" industrial locking casters.



REVEL

The elegant appearance and design of our Revel series injects a bit of refinement into a workspace or classroom. Create additional interest within a space by selecting multiple base finishes for a distinctive look with personality. 32 standard powder coat finishes available.





EXCLAIM



Exclaim is bold, yet sophisticated. These 2" and 3" angled column bases create a collection of attractive tables with a variety of modular configurations.



ULTRA



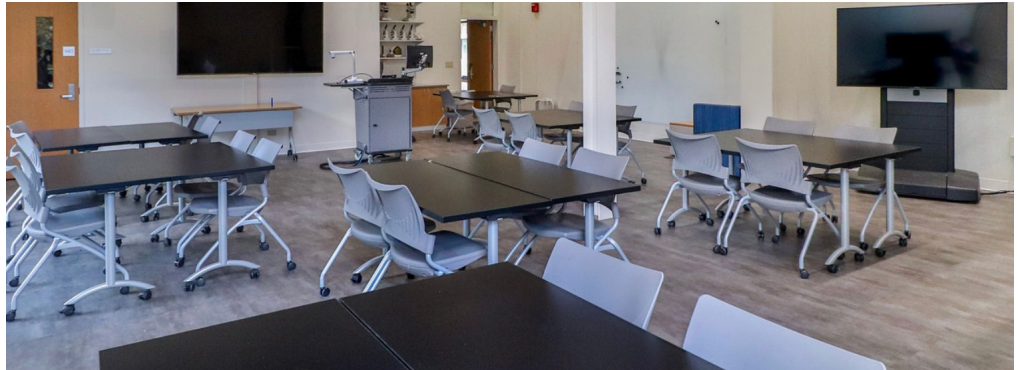
Our open rectangular frame Ultra series makes a solid statement. It looks the part in private & open plan offices, training, collaborative and dining applications. Can also be specified in standing height and with locking casters.





STRETCH

The subtle arch of Stretch series provides an upgraded look for classrooms, training and multi-purpose areas. Its curved, fully welded construction gives it added strength and a contemporary design aesthetic.



APP

Work comfortably where and how you want. App is a personal table that easily transitions from room to room and is perfect for casual areas in the home or workplace. Offered in soft rectangle and round tops with a static or leverless height adjustable base.



ELITE

Elite offers a clean, laser-cut styling and is our most comprehensive line with eight (8) base choices. This fully-welded base series enables long-lasting functionality without sacrificing beauty.





PUDDLE



A table that appears to melt into the floor. Puddle is a beautiful, yet simple solution. Available from lounge to bar height and also offers several height adjustment options.



ELEMENT



Refined, lightweight, aluminum base construction makes Element a great nesting, folding & mobile table solution. Solo option is designed for the individual providing 17.5" of height adjustability, 15° ergonomic tilt-lock, plus flip-top and low profile locking or concealed casters.



JUSTICE



A rigid frame and square column legs provide clean lines and make Justice a heavy-duty choice when long-lasting durability is a requirement. Its unique design gives it the stability to handle a 500 lb. weight capacity and is available in heights of 29", 36" & 42" with optional industrial locking casters.



PRIMARY

Maximize leg space with robust 2" & 3" round and square column bases. Primary's combination of columns and disc bases offer alternatives to meet a wide array of applications.



FOUNDATION

Our competitively priced, and best selling, tubular base style Foundation tables can accommodate almost any application. For 25 years, this popular series has stood the test of time.



FUNDAMENTAL

Fundamental series is perfect for budget-sensitive projects which require a level of sophistication. Unique features include folding, nesting, special height, four (4) height adjustable options, 32 finishes + chrome.



base options



foundation



fundamental



stretch



elite



revel



app



element



justice



artisan



primary



puddle



exclaim



vertigo



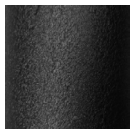
surge



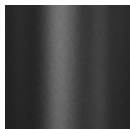
tableXPRESS



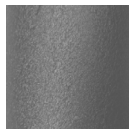
powdercoat base finishes



01
Structured Black



02
Black



05
Structured Slate



17
Creme



21
Silver Frost



23
Phantom



24
Linen



25
Storm



29
Flint



30
Pearl



35
Sand



37
Satin Silver



39
Poppy



40
Rosey



41
Scarlet



42
Kiwi



43
Kale



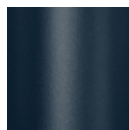
44
Evergreen



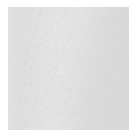
45
Horizon



46
Lagoon



47
Moonlight



48
Arctic



49
Dolphin



50
Cannon



51
Glitz



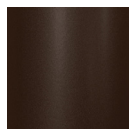
53
Fawn



54
Nickel



55
Pewter



56
Kona



57
Jet



58
Cinder



59
Bronze



the **table** experts

Located in Southern Indiana, the heartland of furniture manufacturing, TableX opened its doors in 1998. We answered the call of commercial dealers and the A&D community wanting a single source of stylish, yet durable table solutions for their clients and backed by a 50 year warranty. We are driven to provide adaptive & more dynamic table solutions with the support of our intelligent, attentive, and professional customer service. Let us help you create comfortable and inspiring spaces.



www.tablex.com // 877.481.1177

