



# Lake Brownwood State Park Trails Map

200 Park Rd. 15  
Brownwood, TX 76801  
(325) 784-5223  
www.texasstateparks.org

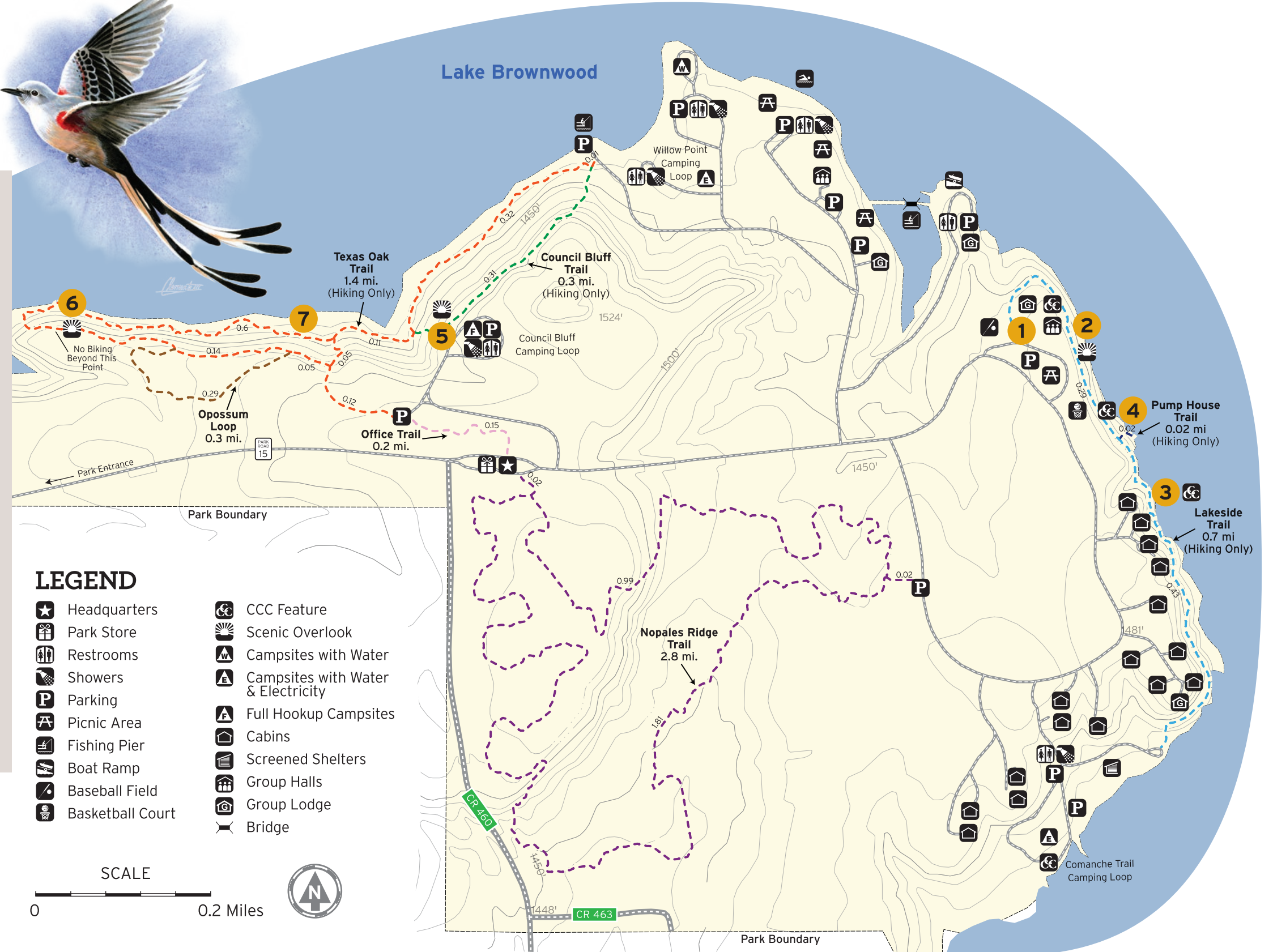
Scissor-tailed flycatcher



## POINTS OF INTEREST

(GPS coordinates shown in decimal degrees)

- 1 CCC AND 36th DIVISION MEMORIAL MONUMENTS**  
31.8592° -99.0180°  
Take a moment to honor the Civilian Conservation Corps that built the park, and the valiant 36th Army Infantry Division that gave its name to the park from 1946 - 1956.
- 2 CCC GRAND STAIRWAY**  
31.8591° -99.0172°  
After enjoying the view from the pavilion, take the terraced stone stairway down to the lake.
- 3 CCC PICNIC SITE**  
31.8562° -99.0156°  
Enjoy the view from the natural stone benches and tables along the lakeshore.
- 4 CCC WATER PUMPHOUSE**  
31.8574° -99.0160°  
See the original water works for the park!
- 5 COUNCIL BLUFF PAVILION AND OVERLOOK**  
31.8590° -99.0296°  
Enjoy a scenic view of the lake from a charming rock pavilion.
- 6 TEXAS OAK TRAIL OVERLOOK**  
31.8593° -99.0368°  
View the lake from a rugged outcrop of limestone boulders.
- 7 LIMESTONE BOULDERS**  
31.8591° -99.0323°  
Look for small lichens and ferns growing in the limestone cracks.



## LEGEND

- Headquarters
- Park Store
- Restrooms
- Showers
- Parking
- Picnic Area
- Fishing Pier
- Boat Ramp
- Baseball Field
- Basketball Court
- CCC Feature
- Scenic Overlook
- Campsites with Water
- Campsites with Water & Electricity
- Full Hookup Campsites
- Cabins
- Screened Shelters
- Group Halls
- Group Lodge
- Bridge

Trail segment distances are measured between trail intersections.  
All trails hiking and biking unless otherwise indicated.  
Contour intervals 10 feet.  
Map compiled by Texas State Parks staff.  
No claims are made as to the accuracy of the data or its suitability to a particular use.

© 2024 Texas Parks and Wildlife Department PWD MP P4506-0009J (7/24)

This publication can be found at [tpwd.texas.gov/spdest/parkinfo/maps/park\\_maps](http://tpwd.texas.gov/spdest/parkinfo/maps/park_maps)

TPWD receives funds from DHS and USFWS. TPWD prohibits discrimination based on race, color, religion, national origin (including limited English proficiency), disability, age, and gender, pursuant to state and federal law. If you believe you have been discriminated against by TPWD, visit [tpwd.texas.gov/nondiscrimination](http://tpwd.texas.gov/nondiscrimination) or call (512) 389-4800 for information on filing a complaint. To obtain information in an alternative format, contact TPWD through Relay Texas at 7-11 or (800) 735-2989, or by email at [accessibility@tpwd.texas.gov](mailto:accessibility@tpwd.texas.gov). If you speak a language other than English and need assistance, email [lep@tpwd.texas.gov](mailto:lep@tpwd.texas.gov). You can also contact Department of the Interior Office of Diversity, Inclusion, and Civil Rights, 1849 C Street, N.W., Washington, D.C. 20240, and/or U.S. Department of Homeland Security Office for Civil Rights and Civil Liberties (CRCL), Mail Stop #0190 2707, Martin Luther King, Jr. Ave., S.E. Washington, D.C. 20528.

# Lake Brownwood State Park



FOR EMERGENCIES, PLEASE CALL 9-1-1.

## A Legacy in Limestone

Welcome to Lake Brownwood State Park, one of the most extensively developed Civilian Conservation Corps (CCC) parks in Texas. Enjoy the handiwork of the CCC men who constructed the rustic limestone cabins and the outdoor seating areas you'll find along the trails.

### STAYING SAFE

**KNOW YOUR LIMITS.** Prepare for sun and heat. Wear sunscreen, insect repellent and appropriate clothing/hiking shoes.

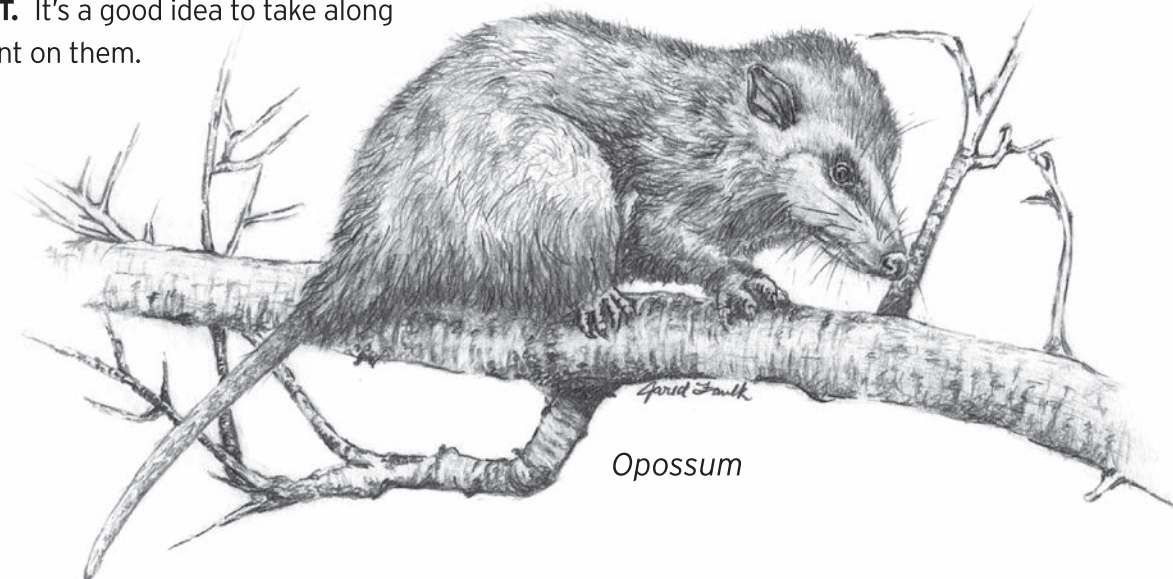
**DRINK PLENTY OF WATER.** Your body quickly loses fluids when you're on the trail. Bring a quart of water per hour of activity.

**TELL OTHERS WHERE YOU'LL BE.** If possible, avoid exploring alone. Tell someone where you are going and when you plan to return.

**WEAR A HELMET WHEN BIKING.** Check with park HQ to match the trail to your skill level. Wear a helmet to protect yourself in case of a crash.

**POTENTIALLY HARMFUL PLANTS AND ANIMALS MAY LIVE HERE.** You'll see them more easily if you stay on trails. Do not approach wildlife!

**YOU MAY NOT BE ABLE TO CONNECT.** It's a good idea to take along a cell phone and GPS unit, but don't count on them.



TRAIL	DISTANCE	TIME	DIFFICULTY	DESCRIPTION
<b>TEXAS OAK TRAIL</b>	1.4 mi.	45 min.	Moderate	You'll find at least three kinds of Texas oaks along this trail. In addition to the Texas red oak, you'll also see post oaks and live oaks.
<b>OPOSSUM LOOP</b>	0.3 mi.	30 min.	Easy	Watching for wildlife? Look for opossums, white-tailed deer and wild turkeys along the trail or at the viewing blind.
<b>COUNCIL BLUFF TRAIL</b>	0.3 mi.	30 min.	Moderate	Climb the stone steps along the trail and enjoy the view from the bluffs overlooking the lake.
<b>LAKESIDE TRAIL</b>	0.7 mi.	45 min.	Moderate	Enjoy the legacy of the CCC as you hike this historic trail connecting the campground and cabins to the day-use area. Rest at the "outdoor living rooms," unique rustic limestone tables and benches that provide awesome views of Lake Brownwood.
<b>PUMP HOUSE TRAIL</b>	0.02 mi.	10 min.	Moderate	Take this short spur trail to see the original stone pump house built by the CCC enrollees to provide water for the park.
<b>NOPALES RIDGE TRAIL</b>	2.8 mi.	2.5 hrs.	Moderate	Watch out for the sharp spines on the prickly pear (nopal) cacti as you bike or hike this trail. You'll also find twisted-leaf yuccas; its scientific name means "lover of rock."

### TRAIL ETIQUETTE

**Trash your trash.** Keep the park natural. Pack out all of your trash and Leave No Trace.

**Leave feeding to nature.** Feeding wild animals will make them sick and more likely to harm people.

**Take only memories and pictures.** Please don't disturb or remove any of the park's plants, animals or artifacts.

**Keep pets on leashes** for their safety, and to protect wildlife.