

2024-2025

# TEXAS HUNTING REGULATIONS



SEPTEMBER 1, 2024 - AUGUST 31, 2025

## 2024-2025 SUMMARY OF HUNTING REGULATIONS

### OVERVIEW OF FISHING AND HUNTING LAWS

<b>General Laws</b> .....	<b>4</b>
Unlawful Activities.....	4
Personal Identification .....	4
Inspection Authority .....	4
Waste Of Game .....	4
Retrieval of Game and Hunting Dogs.....	4
Sale of Inedible Wildlife Parts .....	4
Harassment of Hunters, Trappers, or Anglers.....	4
Hunter Orange.....	4
<b>Criminal Penalties and Civil Value Recovery</b> .....	<b>5</b>
Civil Restitution .....	5
License Reinstatement.....	5
Interstate Wildlife Violator Compact.....	5
<b>Operation Game Thief</b> .....	<b>5</b>
<b>Transfer and Importation of Wildlife Resources</b> .....	<b>5</b>
Transfer of Wildlife and Aquatic Resources.....	5
Importation of Wildlife and Aquatic Resources.....	5

### HUNTING

<b>General Regulations and Information</b> .....	<b>6</b>
Means and Methods .....	6
Unlawful Activities.....	7
Tagging Game Animals .....	8
Proof of Sex.....	9
Transporting and Transferring Deer or Pronghorn.....	10
Processing of Game Animals .....	10
Facilities .....	10
Commercial Cold Storage or Processing Facility Record Keeping Requirements .....	10
Type 1 Commercial Cold Storage or Processing Facility Requirements.....	10
Type 2 Commercial Cold Storage or Processing Facility on Hunting Lease Requirements.....	10
Private, Non-commercial, Family-Owned Cold Storage or Processing Facility.....	10
Taxidermist.....	11
Youth Hunting Seasons.....	11
<b>Game Animals</b> .....	<b>12</b>
Chronic Wasting Disease (CWD) .....	12
Deer.....	16
Pronghorn (by Permit Only) .....	18
Desert Bighorn Sheep (by Permit Only) .....	18
Javelina and Squirrel .....	18
<b>Alligator</b> .....	<b>19</b>
General Information .....	19
Means and Methods for Alligators.....	19
Non-core Counties .....	19
Core Counties .....	19
Alligators in Texas: Rules, Regulations and General Information .....	19
<b>Upland Game Birds</b> .....	<b>20</b>
Upland Game Birds Seasons and Limits .....	20
Wild Turkey.....	20
<b>Migratory Game Birds</b> .....	<b>21</b>
Special Veterans - Active Military Personnel Waterfowl Hunting Days.....	21
Harvest Information Program (HIP) .....	21
Means and Methods .....	21
Unlawful Activities.....	22

Documentation .....	22
Importation Limit .....	22
Hunting On Public Waters .....	22
Dove Seasons, Limits, and Zones .....	23
Duck Seasons, Limits, and Zones .....	24
Goose Seasons, Limits, and Zones .....	25
Sandhill Crane Seasons, Limits, and Zones .....	26
<b>Nongame Species.....</b>	<b>27</b>
Take, Possess or Sale of Furbearers .....	28
<b>Endangered, Threatened, and Other Protected Animals.....</b>	<b>28</b>
Protected Birds .....	28
“Canned Hunts” .....	28
<b>Non-protected and/or Exotic Species.....</b>	<b>29</b>
Exotic Animals and Fowl .....	29
Feral Hogs and Coyotes .....	29
Mountain Lions .....	29
Unprotected Birds .....	29
<b>COUNTY LISTINGS</b>	
<b>Restricted Areas in Counties.....</b>	<b>30</b>
Unlawful Means and Methods in Specific County Areas .....	30
<b>Hunting on Federal or Other Governmental Lands.....</b>	<b>30</b>
<b>Annual Public Hunting Permit .....</b>	<b>30</b>
<b>County Listings Table.....</b>	<b>31</b>
<b>Definitions .....</b>	<b>47</b>
<b>Commonly Used Abbreviations .....</b>	<b>50</b>
<b>TPWD Regional and Field Law Enforcement Offices .....</b>	<b>50</b>
<b>Wildlife Resource Document .....</b>	<b>51</b>
<b>Non-core Alligator Hide Tag Report.....</b>	<b>51</b>



© 2024 Texas Parks and Wildlife Department PWD BK L2000-1170a (8/24)

TPWD receives funds from DHS and USFWS. TPWD prohibits discrimination based on race, color, religion, national origin (including limited English proficiency), disability, age, and gender, pursuant to state and federal law. If you believe you have been discriminated against by TPWD, visit [tpwd.texas.gov/nondiscrimination](http://tpwd.texas.gov/nondiscrimination) or call (512) 389-4800 for information on filing a complaint. To obtain information in an alternative format, contact TPWD through Relay Texas at 7-1-1 or (800) 735-2989, or by email at [accessibility@tpwd.texas.gov](mailto:accessibility@tpwd.texas.gov). If you speak a language other than English and need assistance, email [lep@tpwd.texas.gov](mailto:lep@tpwd.texas.gov). You can also contact Department of the Interior Office of Diversity, Inclusion, and Civil Rights, 1849 C Street, N.W., Washington, D.C. 20240, and/or U.S. Department of Homeland Security Office for Civil Rights and Civil Liberties (CRCL), Mail Stop #0190 2707, Martin Luther King, Jr. Ave., S.E. Washington, D.C. 20528.

In accordance with Texas State Depository Law, this publication is available at the Texas State Publications Clearinghouse and/or Texas Depository Libraries.

# OVERVIEW OF FISHING AND HUNTING LAWS

## General Laws

The following information addresses some common questions about hunting and fishing laws and regulations.

### UNLAWFUL ACTIVITIES

It is UNLAWFUL to:

- take, attempt to take, or possess wildlife resources within a protected length limit, in greater numbers, by other means, or at any time or place, other than as indicated within this guide or as may otherwise be provided by law.
- hunt on public roads or the right-of-way of public roads; except for certain reptiles and amphibians (pg. 64).
- store, transport, or abandon an unsecured firearm in a place where children can obtain (unsupervised) access to the firearm. A person under age 17 who has lawful access to a firearm may hunt with the firearm if the youth has successfully completed the hunter education course, or is accompanied by a licensed hunter age 17 or older who has complied with the hunter education requirement, if applicable.
- drive a motor vehicle in the bed of a navigable freshwater stream, unless approved by a local river access plan established by a city, county, or river authority. This law does not apply to the Canadian River and Prairie Dog Town Fork of the Red River. Other exemptions may be found in the Parks and Wildlife Code, Chapter 90.
- fish on privately-owned waters, fish in public water from private land, or hunt on privately-owned lands without the permission of the owner or the owner's agent.
- fish on public water from private land without a fishing license.
- enter property that is agricultural, fenced, posted with a sign(s), or marked (purple paint) without the express permission of the owner (Texas Penal Code §30.05). Posts or trees bearing a purple paint marking of not less than eight inches in length and not less than one inch in width and not less than three or more than five feet from the ground, constitute notice that the property is posted.
- hunt any animal without landowner consent.
- kill a desert bighorn sheep, pronghorn, white-tailed deer, or mule deer without landowner consent (Parks and Wildlife Code state jail felony). Upon conviction, hunting and fishing license is automatically revoked.
- discharge a firearm on or across a public road.
- possess a deer or any part of a deer that has been hit by a motor vehicle.

### PERSONAL IDENTIFICATION

While hunting, fishing or trapping, persons 17 years of age or older must carry on their person a valid driver's license or personal identification certificate issued by the Texas Department of Public Safety. Non-residents must carry similar documents issued by the agency in their state or country of residence that is authorized to issue driver's licenses or personal identification certificates.

### INSPECTION AUTHORITY

A game warden who observes a person engaged in an

activity governed by the Parks and Wildlife Code or reasonably believes that a person is or has been engaged in such an activity may inspect:

- any license, permit, tag, or other document issued by the department and required by the Parks and Wildlife Code of a person hunting or catching wildlife resources;
- any device that may be used to hunt or catch a wildlife resource;
- any wildlife resource in the person's possession; and
- the contents of any container or receptacle that is commonly used to store or conceal a wildlife resource.

### WASTE OF GAME

It is an offense if a person while hunting, kills or wounds a game bird or game animal and intentionally or knowingly fails to make a reasonable effort to retrieve it and include it in the person's daily or seasonal bag limit. It is an offense if a person intentionally takes or possesses a game bird, game animal, or a fish and intentionally, knowingly, or recklessly, or with criminal negligence, fails to keep the edible portions in an edible condition.

### RETRIEVAL OF GAME AND HUNTING DOGS

No person may enter any property to pursue wounded game, retrieve a dog, or for any other purpose, without the consent of the landowner.

### SALE OF INEDIBLE WILDLIFE PARTS

The following inedible wildlife parts may be purchased or sold if lawfully taken or possessed:

- Hair, hide, antlers, bones, horns, skull, hooves, or sinew from the following game animals: mule deer, white-tailed deer, pronghorn, desert bighorn sheep, gray squirrels, fox squirrels, and javelina.
- Feathers, bones, or feet of game birds (turkey, pheasant, quail, and chachalaca) may be used, purchased, or sold for making fishing flies, pillows, mattresses, and other similar commercial uses.
- Feathers from migratory birds may not be purchased or sold for hats or ornamental purposes nor may a person purchase or sell mounted migratory game bird specimens or their parts taken by hunting.

### HARASSMENT OF HUNTERS, TRAPPERS, OR ANGLERS

Under the Sportsmen's Rights Act (Parks and Wildlife Code, §62.0125), harassment of hunters, trappers, or anglers is punishable by a fine of \$200 to \$2,000 and/or 180 days in jail.

### HUNTER ORANGE

Hunter orange is **RECOMMENDED** for hunter safety but is not required while hunting on private property.

# Criminal Penalties and Civil Value Recovery

If you violate fish and wildlife laws, you may:

- be fined for misdemeanors
  - Class C – \$25-\$500
  - Class B – \$200-\$2,000 and/or 6 months in jail
  - Class A – \$500-\$4,000 and/or 1 year in jail;
- be fined for state jail felonies (\$1,500-\$10,000 and/or up to 2 years in jail);
- face automatic suspension or revocation of licenses for up to five years; and
- forfeit hunting gear, including firearms, used to commit a violation.

## CIVIL RESTITUTION

In addition to the criminal penalty for hunting and fishing violations, the department will seek the civil recovery value for the loss or damage to wildlife resources. Failure to pay the civil

recovery value will result in the department's refusal to issue a future license, tag, or permit. Hunting or fishing after failing or refusing to pay civil restitution is a Class A misdemeanor punishable by a \$500 - \$4,000 fine; punishment in jail (not to exceed one year); or both. For questions call (512) 389-4630.

## LICENSE REINSTATEMENT

A person who seeks to reinstate their license after revocation, denial or suspension must apply for license privilege reinstatement and pay a \$100 fee.

## INTERSTATE WILDLIFE VIOLATOR COMPACT

Texas is a member of the Interstate Wildlife Violator Compact (IWVC) which allows member states to share information about wildlife violators and to deny licensure to persons who have failed to comply with conservation law in member states. For more information call (512) 389-8801.

## REWARD HOTLINE: (800) 792-GAME (4263)

Make a difference by reporting poaching, pollution and dumping, arson in state parks and intoxicated boaters! Up to a \$1,000 reward may be paid for information leading to conviction of a person for a violation of our state's wildlife and fisheries laws, laws related to environmental crime, arson and intoxicated boaters.

# Operation Game Thief

Operation Game Thief (OGT) is an official Texas wildlife crime-stopper program and a privately funded 501(c)(3) nonprofit. Please consider supporting efforts to protect precious natural resources and keep the waterways safe by sending a tax-deductible donation to OGT, or by becoming an OGT member, [ogtb.org](http://ogtb.org). Donations can also be sent to TPWD, 4200 Smith School Road, Austin, Texas 78744, or received by phone (512) 389-8801.

# Transfer and Importation of Wildlife Resources

## TRANSFER OF WILDLIFE AND AQUATIC RESOURCES

A person may give or receive any legally taken wildlife or aquatic resource, or part of the resource, that is required to be tagged or that is protected by a daily bag / possession limit if the resource is accompanied by a **Wildlife Resource Document (WRD)** (pg. 50). A person may use the WRD provided in this guide (pg. 50) or a handwritten document that includes the same required information. The WRD is available online: [tpwd.texas.gov/oa/transfer](http://tpwd.texas.gov/oa/transfer).

- For additional information for deer and pronghorn related to tagging, proof of sex, transporting animals, and processing of game animals, see pgs 46-47.
- For turkey, the WRD must remain attached until the turkey reaches its final destination and is finally processed (pg. 8).

For all other wildlife resources, a properly executed WRD must accompany the resource until it reaches the possessor's permanent residence or a cold storage/processing facility, EXCEPT, no WRD is required if a person receiving the wildlife resource does not exceed the possession limit (or bag limit if in the field) and is lawfully licensed or possesses the applicable license. **Migratory Game Birds have different documentation requirements** (pg. 20).

## IMPORTATION OF WILDLIFE AND AQUATIC RESOURCES

- It is unlawful to import a wildlife or aquatic resource into this state or possess a resource taken outside this state unless:
  - the person possesses a valid hunting, fishing, or other applicable license, endorsement, tag, permit, or document for the state or country in which the resource was legally taken; and
  - a person produces, upon request of a game warden, a valid driver's license or personal identification certificate.
- See pg. 11 for information related to importation of carcasses from CWD-positive states.
- **IMPORTS FROM MEXICO:** The requirements listed above are waived if a United States Customs Officer's Statement is obtained from the United States Customs Office at the port of entry showing that the wildlife resource was brought in from Mexico. The Customs Officer's statement must accompany the wildlife resource to its final destination.

# HUNTING

## General Regulations and Information

### What's New for Hunting

New Chronic Wasting Disease (CWD) zones established in Coleman, Real, and portions of Brown counties. For more information on current zone boundaries, requirements, and dates and hours of operation of checkstations: [tpwd.texas.gov/cwd](http://tpwd.texas.gov/cwd). "Doe days" expanded in 43 counties in the Post Oak Savannah and Pineywoods ecoregions (pgs. 68-83). Fall youth-only seasons expanded to include Friday for white-tailed deer, squirrels, and wild turkeys. Mandatory harvest reporting now required for all wild turkeys harvested in all counties during all seasons (pg 57). Updates to wild turkey season closures, bag limits, and season dates in specific counties (pgs. 68-83). Changes to light geese regulations include removal of the Light Goose Conservation Order, and during the regular light goose season a daily bag limit of 5 in the aggregate and possession limit of three times the daily bag. Digital Federal Duck Stamps now available (pg 12).

## MEANS AND METHODS

### It is LEGAL to:

- hunt animals and non-migratory game birds from a motor vehicle, powerboat, sailboat, or from any other floating device within the boundaries of private property or upon private water.
- use calling devices (including manual and mouth-operated), recordings, and electrically amplified calls to hunt game animals and game birds. Electronic calls may not be used to hunt migratory game birds.
- use decoys to hunt game animals and game birds. NO person may use live decoys when hunting migratory game birds.
- bait for game animals, nongame animals, and upland game birds, except for wild turkey in the East Zone and migratory game birds. (Baiting is unlawful on most public property. Please check specific regulations for that public property.)
- trap nongame/exotic animals (such as feral hogs, rabbits, etc.) on private property.
- use dogs to aid in the hunting of any game bird.

## Firearms

**Game animals and non-migratory game birds may be hunted with any legal firearm, EXCEPT:**

- **rifire ammunition** (of any caliber) may NOT be used to hunt white-tailed deer, mule deer, desert bighorn sheep, or pronghorn.
- **fully automatic firearms**
- **shotguns** are the only legal firearm that may be used during East Zone spring season for wild turkey.
- **magazine capacity (number of shells / cartridges allowed):** there are no restrictions on the number of shells or cartridges a legal firearm may hold when hunting game animals or game birds (except migratory game birds, see Legal Shotgun, pg. 20).
- **muzzleloader** deer seasons are restricted to muzzleloading firearms only: any firearm designed such that a bullet/projectile, and powder can be loaded only through the muzzle (as opposed to breech-loading firearms). A cap and ball firearm in which the powder and ball are loaded into a cylinder is not a muzzleloader.

- **suppressors (aka "silencers"):** may be used to take any wildlife resource; however, all federal, state and local laws continue to apply.

## Air Guns and Arrow Guns

Alligator, game animals, furbearers, squirrels, and non-migratory game birds (EXCEPT wild turkey in the East Zone) may be hunted with air guns and arrow guns provided:

- alligators, bighorn sheep, javelina, mule deer, white-tailed deer, pronghorn, and turkey (EXCEPT wild turkey in the East Zone) may be taken only with pre-charged pneumatic arrow guns, or pre-charged pneumatic air guns.
- pre-charged pneumatic air guns must fire a projectile of at least .30 caliber in diameter and at least 150 grains in weight with a minimum muzzle velocity of 800 feet per second or any combination of bullet weight and muzzle velocity that produces muzzle energy of at least 215 foot pounds of energy.
- squirrels, pheasant, quail, and chachalaca may be hunted with air guns that fire a projectile of at least .177 caliber (4.5mm) in diameter producing a muzzle velocity of at least 600 feet per second.
- arrows or bolts used with an arrow gun must conform to the same projectile standards for archery.
- arrow guns may not be used to hunt deer or wild turkey during archery season.

[tpwd.texas.gov/oa/airgun](http://tpwd.texas.gov/oa/airgun)

## Archery

- Only lawful archery equipment prescribed in this section may be used for taking game animals or game birds.
- Lawful archery equipment includes compound bows, crossbows, longbows, and recurved bows.
- Lawful archery equipment may not be used to hunt deer during the Muzzleloader-Only Deer Season.
- Lawful archery equipment is lawful for non-protected nongame animals (pg. 5).

## Longbows, compound bows, or recurved bows:

- There is no minimum draw requirement.
- Lighted pins, sight magnification, overdraw rests, and devices that allow a bow to be locked at full or partial draw are lawful during any season when lawful archery equipment may be used.

### Crossbow:

For current crossbow requirements, please refer to the Outdoor Annual Mobile App or visit:

[tpwd.texas.gov/oa/MeansMethods](http://tpwd.texas.gov/oa/MeansMethods)

- In Collin, Dallas, Grayson, and Rockwall counties, no person may use a crossbow to hunt deer during the Archery-Only Open Season unless the person has an upper-limb disability and has in immediate possession a physician's statement that certifies the extent of the disability. An upper-limb disability is a permanent loss of the use of fingers, hand, or arm in a manner that renders the person incapable of using a longbow, compound bow, or recurved bow.
- An Archery Endorsement is required to hunt deer during the Archery-Only Open Season. An archery endorsement is required to hunt deer at any time in Collin, Dallas, Grayson, and Rockwall counties, including during the general open season.
- Any person, regardless of physical ability, may use a crossbow to hunt game animals or game birds in any county, including Collin, Dallas, Grayson, and Rockwall

### UNLAWFUL ACTIVITIES

#### It is UNLAWFUL to:

- knowingly discharge a firearm causing a projectile to cross a property line, unless the person owns both sides of the property line or has obtained written permission from the owner of any land crossed by the projectile.
- discharge a firearm on or across a public road or hunt from public roads.
- use a computer, or operate a facility that uses a computer, to assist in remote firearm or archery hunting, if the animal being hunted is located in Texas.
- hunt with the aid of artificial light of any form that casts or reflects a beam of light onto or otherwise illuminates a game animal or bird; EXCEPTION: hunters with legal blindness, or hunters who have a documented permanent physical disability that prevents them from using traditional firearm sighting devices may use laser sighting devices.
- Hunters with blindness must possess a physician's signed statement attesting to legal blindness; and be assisted by a licensed hunter at least 13 years of age who is not legally blind. Legal blindness is defined in section 62.104 (c) of the Texas Government Code.
- Hunter education and licensing requirements still apply to hunters with legal blindness, hunters with a documented permanent physical disability, and persons assisting hunters with blindness or other disability.
- All hunters may use battery-powered scoping devices that project a light or dot only inside the scope or pin sight lights on archery equipment.
- use traps to hunt game birds or game animals.
- use dogs to hunt deer in this state.
- No person may possess a shotgun and buckshot or slugs while in the field with dogs on another person's land during an open deer season in Angelina, Hardin, Jasper,

counties, during a general open season or East Zone spring turkey season.

### Projectiles (Arrows and Crossbow Bolts)

While hunting game animals and game birds, a projectile may not be poisoned, drugged, or explosive.

- When used to hunt turkey and all game animals other than squirrels, a projectile must be equipped with a broadhead hunting point. An archer may have arrows/bolts with field, target, or judo points in the quiver with the broadhead hunting points.
- There are no restrictions or minimum requirements on arrow or bolt lengths, arrow material, arrow weight, lighted nocks, broadhead lengths or diameter, number of cutting edges, broadhead material, or mechanical broadheads.

### Falconry

Please contact (512) 389-4481 for information on falconry permitting and regulations or visit:

[tpwd.texas.gov/oa/falconry](http://tpwd.texas.gov/oa/falconry).

For open seasons and daily bag limits for migratory game birds visit: [tpwd.texas.gov/oa/migratory](http://tpwd.texas.gov/oa/migratory).

Nacogdoches, Newton, Orange, Sabine, San Augustine, Shelby, and Tyler counties.

- No more than two dogs may be used to trail a wounded deer in all counties; however, in Jasper, Newton, Sabine, and San Augustine counties, a person may trail a wounded deer with no more than two leashed dogs held by the person in control of the dogs. A "wounded deer" is a deer leaving a blood trail.
- use aircraft (including drones, except by activity-specific permit) to hunt, locate (including wounded animals), manage, harass, drive, trap or photograph any wild animal. Use of drones to locate wounded animals is not permitted.
- hunt on Public Hunting Areas without the required permits.
- hunt in a subdivision on lots 10 acres or less in an unincorporated area of a county if prohibited by local ordinance. Contact local county clerk and ask about §235.022, Local Government Code.
- hunt on any area named as a wildlife sanctuary, nesting, or propagation area.
- hunt in state and/or national parks or refuges except during scheduled hunts or under other special state or federal policies.
- hunt any wild animal or wild bird on or over privately-owned land that is submerged under public freshwater due to seasonal or occasional inundation or submerged under saltwater above the mean high tide line. The property must be posted to indicate that hunting is prohibited.
- hunt any wild animal or wild bird on foot or from a vehicle on any public road or road right-of-way, or a boat on public water, except that migratory waterfowl may be hunted from a boat or any floating craft (except a sinkbox)

under certain conditions (Migratory Game Bird section, beginning pg. 20).

- possess a firearm if a convicted felon, with limited exception. Texas law allows the possession and use of a muzzle loading firearm if it is an antique or curio firearm manufactured before 1899, or is a replica of an antique or curio firearm manufactured before 1899 that does not use rimfire or centerfire ammunition. For questions regarding the possession and use of firearms by convicted felons, refer to Texas Penal Code Ch. 46 and/or seek guidance from legal counsel.

See County Listings table for additional regulations (pgs. 68-45).

### TAGGING GAME ANIMALS

Hunters in possession of a digital license and tags should refer to [tpwd.texas.gov/digitaltags](http://tpwd.texas.gov/digitaltags) for tagging instructions.

#### Tagging a Deer or Wild Turkey

A tag from the hunting license of the person who killed the deer or turkey must be correctly and legibly completed (including name of property and county) and immediately attached to the animal (exception is properties with special-issued tags such as MLDP tags).

#### The hunter MUST:

- use the specific type of deer or turkey tag (for example, buck tags must be used only on buck deer, antlerless tags on antlerless deer, etc.).
- have the month and date of kill clearly cut out on the tag by notching the respective month and day. **Do not "ink out."**
- immediately complete, date and cut out the appropriate hunting license tag after a deer is harvested but before the deer is field dressed, moved or tagged.

- after a deer is harvested and tagged, but before the deer is field-dressed or moved, complete the log (in ink) on the back of the hunting license. Boxes with asterisks in the log must be checked for harvest in antler restricted counties for bucks with an inside main beam spread of at least 13".
- complete the mandatory harvest reporting for wild turkey in all counties or for white-tailed deer in applicable counties using the Texas Hunt & Fish app: [tpwd.texas.gov/huntandfish](http://tpwd.texas.gov/huntandfish)

Completion of the log is not required for mule deer, or for white-tailed deer or mule deer harvested under a MLDP tag, TPWD Special Drawn Public Hunt permit, or on a Big Time Texas Hunt.

#### Where to Attach Tag to Deer or Wild Turkey

The tag may be attached anywhere on a deer or turkey so that it is not damaged, defaced, or lost in transporting or handling. For deer, the appropriate tag or permit must remain attached until the deer reaches its final destination and is quartered. For tagging requirements at a Type 1 cold storage or processing facility, see pg. 47. If deer's head is severed from the carcass (body), then the appropriate tag or permit must remain attached to its carcass (Proof of Sex section, pg. 8). If the head does not accompany the carcass, then the head must be accompanied by a Wildlife Resource Document (WRD, pg. 50). For turkey, the tag must remain attached until the turkey reaches its final destination and is finally processed. During a season in which the bag composition for turkey is restricted to gobblers only or gobblers and bearded hens, proof of sex (pg. 8) must remain with the turkey, attached or unattached, until it reaches either the processor's permanent residence or a cold storage/processing facility and is finally processed.

**TIP: Remember that if the head and the carcass are separated, the tag from the hunting license goes with the meat and the WRD goes with the head.**

**NOTICE:** Read the tag use description on your license carefully before attaching to harvested deer or turkey.



On-site registration for public hunting is also available online or through the *Texas Hunt & Fish* app.

### MANDATORY Harvest Reporting

Harvest reporting is mandatory for wild turkeys in all counties in both fall and spring seasons. Harvest reporting remains mandatory for buck and antlerless deer in four counties near Dallas, antlerless white-tailed deer in 21 south-central Texas counties (pg. 54), and alligator gar statewide, except Falcon International Reservoir (pg. 29).

Report online or on the Texas Hunt & Fish app: [tpwd.texas.gov/huntandfish](http://tpwd.texas.gov/huntandfish)

TAG #	USE ON TURKEY ONLY
1	Wild Turkey – valid in county with bag limit of 1 or 4 turkeys; NOT VALID in East Zone.
2	Wild Turkey – valid in county with bag limit of 1 or 4 turkeys; NOT VALID in East Zone.
3	Wild Turkey – valid in county with bag limit of 1 or 4 turkeys; NOT VALID in East Zone.
4	Wild Turkey – valid in any county with bag limit of 1 or 4 turkeys. VALID in all zones.
TAG #	USE ON WHITE-TAILED DEER ONLY
5	White-tailed Deer – Antlerless ONLY
6	White-tailed Deer – Antlerless ONLY
7	White-tailed Deer – Buck or Antlerless
8	White-tailed Deer – Buck or Antlerless
9	White-tailed Deer – Buck or Antlerless
<b>IMPORTANT:</b> Tags #5 and #6 are for white-tailed deer antlerless only. Tags #7, #8, and #9 are for white-tailed deer buck or antlerless. The white-tailed deer tags on the license may be used in any county during an open season for white-tailed deer. Be aware that if Tags #7, #8, and #9 are used on antlerless, you will no longer be allowed a buck that deer season.	
TAG #	USE ON MULE DEER ONLY
10	Mule Deer – Antlerless Only <i>Valid ONLY during archery-only special season in Brewster, Pecos, or Terrell counties</i>
11	Mule Deer – Buck or Antlerless <i>Valid for bucks in any county during any open mule deer season AND for antlerless deer during archery-only special season in Brewster, Pecos, or Terrell counties</i>
<b>NOTE:</b> The mule deer tags on the hunting license ARE NOT mule deer permits and MAY NOT be used in lieu of mule deer permits when required.	

## PROOF OF SEX

### Deer or Pronghorn

It is unlawful to possess a deer or pronghorn with proof of sex removed unless the deer or pronghorn has reached the final destination other than a Type 1 cold storage or processing facility (pg. 47) and has been at least quartered. Proof of sex includes one of the following:

- the head (skinned or unskinned) of a buck deer with antlers attached, **OR** the tail and unskinned skull cap with antlers attached;
- the head (skinned or unskinned) of an antlerless deer, **OR** the mammary organ (udder) or vulva **AND** the tail if the deer is female;
- the unskinned head of a pronghorn; or
- a completed Managed Lands Deer Program (MLDP) Tag, Antlerless Mule Deer Permit, CWD Check Station Receipt, or TPWD Drawn Hunt Legal Deer Tag.

It is unlawful to remove the proof of sex of deer or pronghorn at a Type 1 commercial processor until the carcass has been entered into the cold storage logbook and the county and ranch of harvest has been recorded by the cold storage facility.

### Pheasant or Wild Turkey

It is unlawful to possess a pheasant where applicable with proof of sex removed. The following is considered proof of sex and must accompany the pheasant or turkey until it reaches its final destination and is finally processed:

- Pheasant: one leg, including the spur, attached to the pheasant carcass or the entire plumage attached to the pheasant carcass;
- Wild turkey: During a season in which the bag composition for turkey is restricted to gobblers only or gobblers and bearded hens, proof of sex must remain with the turkey, attached or unattached, until it reaches either the processor's permanent residence or a cold storage/processing facility and is finally processed. Proof of sex for turkeys:
  - gobbler (male turkey):
    - one leg, including the spur or
    - a patch of skin with breast feathers and beard attached
  - bearded hen (female turkey): a patch of skin with breast feathers and beard attached

### EXCEPTION to Proof of Sex

Instead of proof of sex, the hunter may obtain a receipt for a taxidermist or a Wildlife Resource Document (WRD) from the landowner or landowner's agent containing the following:

- name of the person who harvested the wildlife resource;
- date the wildlife resource was harvested; and
- one of the following, as applicable: Whether the deer was antlered or antlerless; the sex of the pronghorn; the sex of the turkey and whether a beard was attached; or the sex of the pheasant.

## TRANSPORTING AND TRANSFERRING DEER OR PRONGHORN

**IMPORTANT:** Special regulations may apply within designated CWD zones (pg. 50).

- A person may transport a deer or pronghorn to a final destination (definition, pg. 47), provided the carcass is tagged and proof of sex accompanies the carcass (pg. 8).
- If any part of a carcass is transferred to another person before it reaches a final destination, then the transferred parts must be accompanied by a WRD (pg. 50).
- The parts retained by the person who harvested the deer or pronghorn must be accompanied by a tag until the carcass reaches a final destination.

## PROCESSING OF GAME ANIMALS

### Deer and Pronghorn

- A deer and pronghorn may be skinned and quartered (two forequarters, two hindquarters, and two backstraps) for transport, provided the quartered deer or pronghorn is tagged and proof of sex accompanies the deer or pronghorn (see Cold Storage or Processing Facility, below, for exceptions).
- Deer or pronghorn may only be processed beyond quarters at a location that qualifies as a final destination (definition, pg. 47).

### All Game Animals (including deer and pronghorn)

- The four quarters and two backstraps are the only parts of a game animal required by law to be kept in edible condition.
- Tagging and proof-of-sex requirements, if required, continue to apply until the wildlife resource reaches a final destination other than a Type 1 cold storage or processing facility, AND is quartered.
- While in camp you may remove and prepare a part of a wildlife resource if the removal and preparation occur immediately before the part is cooked or consumed; however, all tagging and proof of sex regulations apply to remaining parts until the parts reach a final destination.

## FACILITIES

A cold storage or processing facility may be established anywhere, including on property where hunting is conducted. It must be stationary and designed to process and/or store wild game. A vehicle, trailer, or other mobile storage or processing arrangement is NOT lawful.

## COMMERCIAL COLD STORAGE OR PROCESSING FACILITY RECORD KEEPING REQUIREMENTS

A person may place and maintain, or possess, in a cold storage or processing facility, lawfully harvested game birds and game animals not in excess of the number permitted to be possessed by law, if the owner, operator, or lessee of the cold storage or processing facility maintains the record book as required by law with:

- name, address, and hunting license number of all persons placing game animals or game birds in storage (if a person other than the person who harvested the game bird or animal, places a game bird or game animal in storage, that person's name and address must be included);
- number and species of all game animals and game birds in storage, and
- date each game animal or game bird was placed in storage (information must be entered into the record book before game is placed in storage)

## TYPE 1 COMMERCIAL COLD STORAGE OR PROCESSING FACILITY REQUIREMENTS

A place of business open to the public for the purpose of storing or processing game animals or game birds upon demand on a for-profit basis or in exchange for anything of value must comply with the record keeping requirements described above, and as follows:

- tags, permits, or WRDs, when applicable, must remain attached to birds until the birds are finally processed;
- tags, permits, or WRDs, when applicable, must remain attached to pronghorn until the carcass is quartered; for deer, tagging and proof of sex requirements cease once the required information detailed above has been entered in the cold storage log, and the county and name of the ranch or property where the deer was harvested has been recorded.
- for deer: tag, or WRD, as applicable, must be retained on the premises for as long as the carcass or any part of the carcass remains in the possession of the cold storage or processing facility.

## TYPE 2 COMMERCIAL COLD STORAGE OR PROCESSING FACILITY ON HUNTING LEASE REQUIREMENTS

A cold storage facility that is not open to the public on an on-demand basis, and is utilized to store or process game taken by persons on properties where hunting by individuals in return for pay or other consideration occurs (a hunting lease) must comply with the record keeping requirements described above, and as follows:

- For turkey, proof of sex and tagging requirements cease to apply when the turkey has been entered in a cold storage record book.
- Once a deer or pronghorn has been entered in the cold storage record book it may be finally processed. Proof of sex and tagging requirements continue to apply until the deer or pronghorn has at least been quartered and entered into the record book.

## PRIVATE, NON-COMMERCIAL, FAMILY-OWNED COLD STORAGE OR PROCESSING FACILITY

Except as noted below, a cold storage record book is not required for game animals or game birds placed in a private, family-owned, non-commercial cold storage or processing facility that is not used by paying hunters; however, all tagging and proof of sex requirements apply. At a private, non-commercial facility where a record book meeting the

requirements of a commercial cold storage or processing facility is voluntarily maintained, proof of sex and tagging requirements are the same as for a Type 2 commercial facility (described above).

**Save your tag and/or permit.** After a wildlife resource reaches its final destination and tagging requirements have

ceased, the possessor is encouraged to retain tags or permits in order to prevent delay or problems (cold storage or processor refusing to accept meat, etc.). When taking game (meat/head/hide) that you have processed at home to a commercial processor, simply attach the appropriate hunting license tag or permit to the game.

## TAXIDERMIST

Hunters who give any part of a game animal or game bird to a taxidermist for mounting must attach a WRD (not the tag from the hunting license or permit) to the part.

In return, for deer, pronghorn, turkey and pheasant, the taxidermist must give the hunter a receipt as prescribed in "EXCEPTION" (pg. 8). The taxidermist "proof of sex" receipt for the part must accompany the tagged carcass until it reaches its final destination and is finally processed. If the taxidermist places any game animal or game bird in cold storage, then the cold storage or processing facility record book

is required by law. Without the appropriate record book and a WRD accompanying the game animal or game bird, a taxidermist may be exceeding the prescribed possession limits for game animals and game birds. Taxidermy information packets may be obtained at [tpwd.texas.gov/oa/TaxidermyForms](http://tpwd.texas.gov/oa/TaxidermyForms).

A taxidermist who accepts a deer or turkey shall retain the accompanying WRD or tag for two years following the return of the resource to the owner or the sale of the deer or turkey mount to recover taxidermy cost.

## Youth Hunting Seasons

- Only licensed hunters 16 years of age or younger are eligible to participate in youth seasons which generally occur before (or directly after) general hunting seasons.
- Youth-only hunting seasons occur for turkeys, squirrels, white-tailed deer (season dates, pg. 68-83), and waterfowl (pg. 23).
- Youth-only waterfowl season requires the youth to be accompanied by a person 18 years of age or older.
- Special requirements, bag limits, and restrictions may apply for youth-only white-tailed deer hunting seasons (pg. 17).
- A Youth Hunting License (Type 169) is valid for the entire license year regardless if the 17th birthday occurs during the license year. However, ONLY individuals 16 years of age or younger are allowed to participate in Youth-Only seasons.



On-site registration for public hunting is also available online or through the *Texas Hunt & Fish app*.

## MANDATORY Harvest Reporting

Harvest reporting is mandatory for wild turkeys in all counties in both fall and spring seasons. Harvest reporting remains mandatory for buck and antlerless deer in four counties near Dallas, antlerless white-tailed deer in 21 south-central Texas counties (pg. 54), and alligator gar statewide, except Falcon International Reservoir (pg. 29).

Report online or on the Texas Hunt & Fish app: [tpwd.texas.gov/huntandfish](http://tpwd.texas.gov/huntandfish)

## Game Animals

**Desert bighorn sheep**  
Javelina (collared peccary)

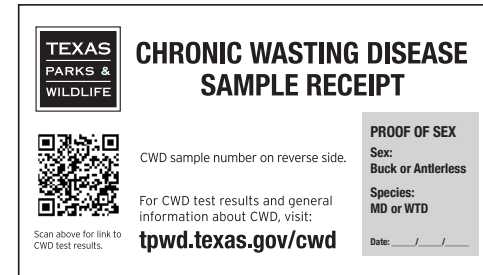
**Mule deer**  
Pronghorn

**Squirrel** (gray or fox)  
White-tailed deer

## CHRONIC WASTING DISEASE (CWD)

CWD is a fatal disease that has been discovered in white-tailed deer, mule deer, elk, and red deer in localized portions of Texas. To detect and manage this disease, the department has designated CWD Zones.

**Hunters who harvest mule deer, white-tailed deer, elk, or other exotic CWD-susceptible species (pg. 50) within CWD Zones, requiring mandatory sampling, are REQUIRED to bring their animals to a TPWD check station within 48 hours of harvest. Please call (512) 389-4505, or visit [tpwd.texas.gov/oa/CWD](http://tpwd.texas.gov/oa/CWD) for current list of CWD Zones with mandatory sampling requirements and CWD check station locations. When mandatory sampling is required in a CWD zone hunters must check each animal harvested and receive a CWD receipt before taking any part of that animal, including any meat or quartered parts, to the final destination.**



**Additional regulations may apply, and additional zones may be established without prior notice upon discovery of CWD.** The department will make every effort to publicize the designation and location of CWD Zones and check stations, as well as any special regulations that may be adopted following the publication of this notice. For the latest updates, call (800) 792-1112, or visit [tpwd.texas.gov/oa/CWD](http://tpwd.texas.gov/oa/CWD). A hunter who harvests a CWD-susceptible species outside a CWD Zone and wishes to have the animal tested for CWD should contact a wildlife biologist in that area: [tpwd.texas.gov/oa/biologists](http://tpwd.texas.gov/oa/biologists).

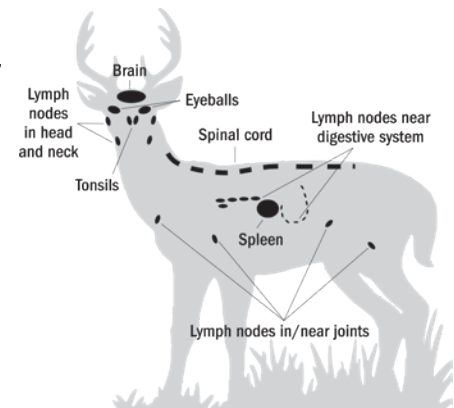
As an alternative to TPWD check stations, a list of Texas Animal Health Commission (TAHC) Certified CWD Postmortem Sample Collectors who are also TPWD-approved is provided at [tpwd.texas.gov/oa/CWD](http://tpwd.texas.gov/oa/CWD).

Please report any symptomatic CWD-susceptible species to your local Texas Game Wardens ([tpwd.texas.gov/oa/GameWarden](http://tpwd.texas.gov/oa/GameWarden)) or Wildlife Biologist ([tpwd.texas.gov/oa/biologists](http://tpwd.texas.gov/oa/biologists)).

## CWD Precautions for Hunters

Infectious prions concentrate in the brain, spinal cord, eyes, lymph nodes and spleen. They are shed in saliva, urine, blood, soft-antler material, feces, and from decomposing infected animals. Proper disposal of carcass parts is important to prevent contamination and spread of this disease. Leave these inedible parts at the site of harvest, or preferably, dispose of them in a landfill, or bury them at least 6-feet deep on the property of harvest in any CWD Zone.

Use common sense precautions while handling and processing any species susceptible to CWD. Never eat meat from an animal that appears sickly. Never eat brain, eyeballs, spinal cord, spleen, or lymph nodes from CWD-susceptible species. The Centers for Disease Control (CDC) reports no strong evidence that CWD can infect humans; however, CDC recommends that hunters consider testing CWD-susceptible species harvested in CWD Zones before consumption.



## CARCASS DISPOSAL AND MOVEMENT RESTRICTIONS REGULATIONS

### CWD-Susceptible Species Harvested in Texas

For current information on rules pertaining to the movement or disposal of deer carcass parts from deer or other CWD susceptible species harvested in Texas: [tpwd.texas.gov/oa/CWD](http://tpwd.texas.gov/oa/CWD).

### CWD-Susceptible Species Harvested Out of State

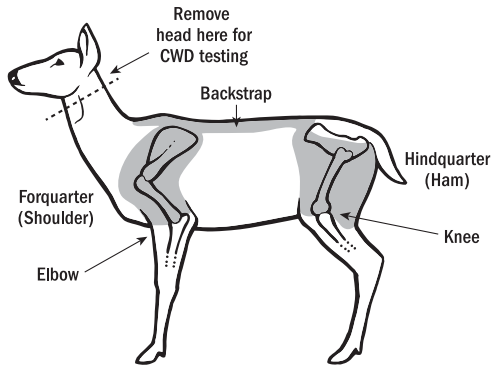
No CWD-susceptible species carcasses or parts of carcasses can enter Texas from a state or country known to have CWD EXCEPT:

- Cut quarters with all brain and spinal cord tissue removed
- Boned meat/cut and wrapped – Texas regulations do not allow processing beyond quarters until reaching your final destination (possessor's personal residence or commercial facility/private cold storage).
- Caped hides with skull not attached
- Skull plate with antlers attached and cleaned of all soft tissue

- Finished taxidermy products
- The intact skinned or unskinned head of a CWD-susceptible species may be transported to a taxidermist in Texas (with a Deer Head Waiver), provided all brain material, soft tissue, spinal column and any unused portions of the head are disposed of in a landfill in Texas permitted by the Texas Commission on Environmental Quality (TCEQ). The waiver should be kept on your person or with the deer head until it reaches the taxidermist. Obtain the Deer Head Waiver form (PWD 1410) to transport the intact head from a TPWD CWD check station or [tpwd.texas.gov/oa/CWD](http://tpwd.texas.gov/oa/CWD).

### How to Bring Harvested Animals to Check Stations

- All CWD-susceptible species harvested within the CWD Zones are required to be sampled for CWD.
- Carcass movement restrictions do not apply if the carcass will not be moved outside of a CWD Zone. However, it is recommended to always properly dispose of unused carcass parts.
- A hunter who leaves a CWD Zone with a harvested animal must quarter the animal and remove the head from the carcass 2–3 vertebrae below the head.
- Place head in a plastic trash bag and keep cool until arriving at a CWD check station.
- Heads can be disposed of at the CWD check stations provided the hunter has a CWD receipt, which serves as a proof-of-sex document.



### Exotic CWD-Susceptible Species

- Texas Animal Health Commission (TAHC) CWD rules apply statewide to harvested exotic CWD-susceptible species such as elk, red deer, sika, moose, and reindeer.
- Each calendar year, the owner of any property in Texas is required to have adult mortalities of exotic CWD-susceptible species, including HUNTER-HARVESTED animals, CWD-tested. If the property is located outside a

CWD zone, the property owner is responsible for sample submission and costs for CWD tests and must report results to Texas Animal Health Commission (TAHC).

For more information regarding CWD testing requirements of exotics, including number of required CWD tests:

[tpwd.texas.gov/oa/ExoticCWD](http://tpwd.texas.gov/oa/ExoticCWD)

## CWD ZONES, CHECK STATION LOCATIONS

### IMPORTANT:

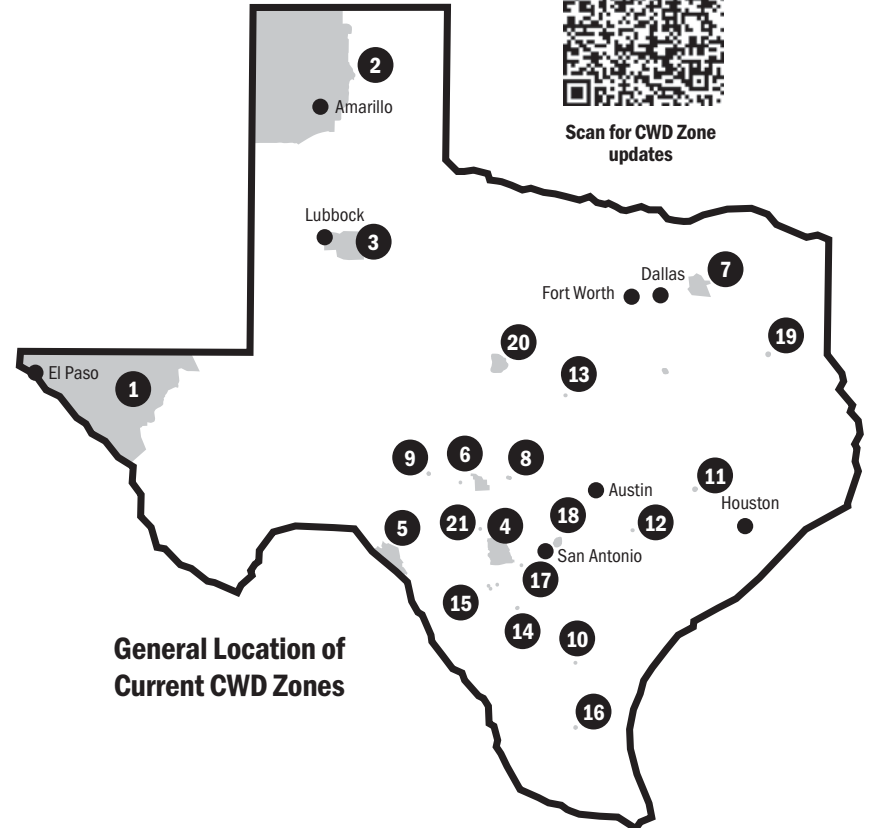
## Additional CWD Zones may be established without prior notice upon discovery of Chronic Wasting Disease.

For current information on CWD Zones, including zone maps, check station locations, dates and hours of operation, and any special regulations, call (512) 389-4505, visit [tpwd.texas.gov/oa/CWD](http://tpwd.texas.gov/oa/CWD), or scan the QR code below.

An interactive CWD Zone map is available in the “Texas Hunt & Fish” mobile app. Hunters can tap the location of harvest to determine if it falls within a zone. From the menu, tap “CWD Zones & Info Options,” then select “CWD Zone Finder.”



Scan for CWD Zone updates



**CURRENT CWD ZONES AND AFFECTED COUNTIES** (at time of hunting regulations printing)

For more information on CWD Zone regulations and requirements:  
[tpwd.texas.gov/oa/CWD](http://tpwd.texas.gov/oa/CWD)

**1. TRANS PECOS**

Culberson, El Paso, Hudspeth, Reeves

**2. PANHANDLE**

Dallam, Deaf Smith, Hansford, Hartley, Hutchinson, Moor, Oldham, Potter, Randall, Sherman

**3. LUBBOCK**

Crosby, Garza, Lubbock, Lynn

**4. SOUTH CENTRAL TEXAS**

Bandera, Medina, Uvalde

**5. VAL VERDE COUNTY**

Val Verde

**6. KIMBLE COUNTY**

Kimble

**7. HUNT COUNTY**

Hunt, Kaufman, Rockwall, Van Zandt

**8. GILLESPIE COUNTY**

Gillespie

**9. SUTTON COUNTY**

Sutton

**10. DUVAL COUNTY**

Duval, Jim Wells

**11. WASHINGTON COUNTY**

Washington

**12. GONZALES COUNTY**

Gonzales

**13. HAMILTON COUNTY**

Hamilton, Mills

**14. FRIO COUNTY**

Frio

**15. ZAVALA COUNTY**

Zavala

**16. BROOKS COUNTY**

Brooks

**17. MEDINA COUNTY**

Medina

**18. BEXAR COUNTY**

Bexar

**19. CHEROKEE COUNTY**

Cherokee

**20. COLEMAN COUNTY**

Brown, Coleman

**21. REAL COUNTY**

Bandera, Real

**DEER**

**Buck Deer**

A deer with an antler point protruding through the skin, or with antler growth in velvet greater than one inch.

**For tagging purposes, all other deer are antlerless deer, regardless of sex.**

**Mule Deer**

Bag limits are established by county (County Listings table, pgs. 68–45). No person may exceed the annual bag limit of two mule deer, no more than one of which may be a buck. The annual bag limit does not apply on MLDP properties.

**Special Antler Restriction – Mule Deer Bucks**

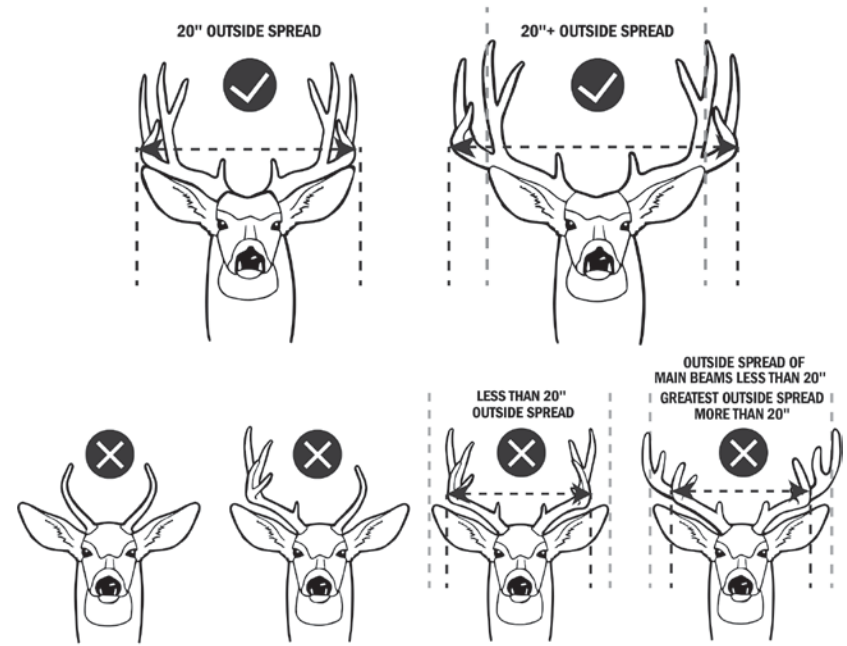
Antler restriction for mule deer bucks applies in Andrews, Armstrong, Bailey, Briscoe, Castro, Childress, Cochran, Collingsworth, Cottle, Dawson, Donley, Floyd, Foard, Gaines, Hale, Hall, Hardeman, Hockley, Lamb, Lynn, Lubbock, Martin, Motley, Parmer, Randall, Swisher, Terry, Terrell, and Yoakum counties:

- a legal buck deer is defined as a buck with an outside antler spread of the main beams of 20 inches or greater.

- any buck with at least one unbranched antler (e.g., spike) is NOT legal to harvest, unless the outside spread of the main beams is at least 20 inches in width.
- mule deer antler restriction does not apply within any CWD zone.

**The average ear-tip to ear-tip spread of mule deer bucks standing in the alert position is 21 inches, as shown in the buck illustrations.** The outside spread is estimated in a similar manner; however, the measurement is taken by using the outside spread of the main beams, as shown by the black arrows/dotted lines below. TPWD requests hunters to voluntarily present the entire head (intact) of any buck mule deer harvested in Terrell County to a designated check station to help assess the experimental antler-restriction regulation.

**For more information on the antler-restriction harvest strategy and location of the Terrell County check station:**  
[tpwd.texas.gov/oa/MDantlers](http://tpwd.texas.gov/oa/MDantlers).



On-site registration for public hunting is also available online or through the *Texas Hunt & Fish app*.

**MANDATORY Harvest Reporting**

Harvest reporting is mandatory for wild turkeys in all counties in both fall and spring seasons. Harvest reporting remains mandatory for buck and antlerless deer in four counties near Dallas, antlerless white-tailed deer in 21 south-central Texas counties (pg. 54), and alligator gar statewide, except Falcon International Reservoir (pg. 29).

Report online or on the Texas Hunt & Fish app:  
[tpwd.texas.gov/huntandfish](http://tpwd.texas.gov/huntandfish)



### White-tailed Deer

Bag limits are established by county (County Listings table, pgs. 68–45). No person may exceed the annual bag limit of five white-tailed deer, no more than three of which may be bucks. The annual bag limit does not apply on MLDP properties.

### Mandatory Harvest Reporting – White-tailed Deer

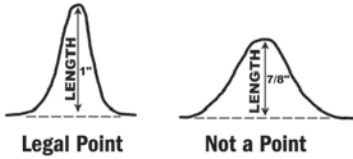
White-tailed deer harvested and tagged with a hunting license tag in the counties listed below during any open season (archery, general muzzleloader, and youth) must be reported within 24 hours of harvest via the “Texas Hunt & Fish” mobile application or online version.

For more information: [tpwd.texas.gov/huntandfish](http://tpwd.texas.gov/huntandfish).

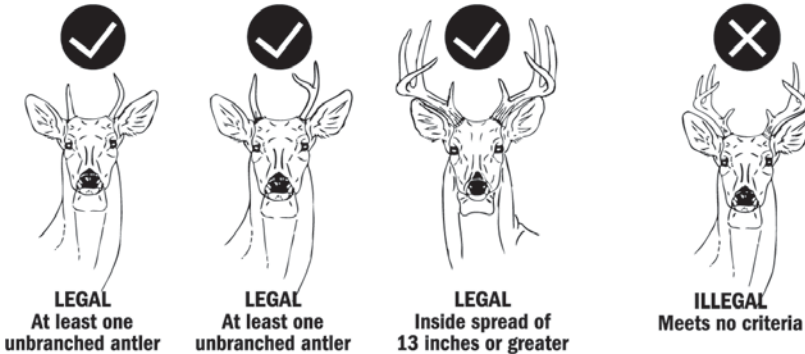
Counties with mandatory buck and antlerless deer harvest reporting: Collin, Dallas, Grayson, Rockwall.

Counties with mandatory antlerless deer harvest reporting: Austin, Bastrop, Caldwell, Colorado, Comal (East of I-35), De Witt, Fayette, Goliad (North of US 59), Gonzales, Guadalupe, Hays (East of I-35), Jackson (north of US 59), Karnes, Lavaca, Lee, Travis (East of I-35), Victoria (North of US 59), Waller, Washington, Wharton (North of US 59), and Wilson.

**Definition of a point:** a projection that extends at least one inch from the edge of a main beam or another tine. The tip of the main beam is also a point.



Ears in alert position approximately 13 inches apart; may be used to judge the inside spread.



### Special Antler Restriction – White-tailed Deer

Antler restrictions apply in certain counties (County Listings table, pgs. 68–45). In these counties, the bag limit is two legal bucks, but only ONE may have 2 branched antlers and an inside spread of 13 inches or greater. In these counties, a legal buck deer is defined as a buck deer with:

- at least one unbranched antler; OR
- an inside spread of 13 inches or greater (unbranched antlered bucks may be of any width and do not count against the limit of ONE buck 13” or greater).

**It is unlawful to take more than one buck with an inside spread of 13 inches or greater or with two branched antlers in a single county.** A person who takes a buck in violation of the antler restriction regulation is prohibited from harvesting any buck deer with branched antlers on both main beams in that county during that hunting season.

The distance from the tip of one ear to the tip of the other ear, when the ears are in the “alert” position may be used as a guide to help estimate the inside spread. If the inside spread extends past the ears, it is likely to be at least 13 inches.

### Special Late Season

In counties with a Special Late Season (County Listings table, pgs. 68–45), harvest is restricted to antlerless and unbranched antlered deer (a buck with at least one antler that has no more than one point). A point is a projection that extends at least one inch from the edge of a main beam or another tine. The tip of the main beam is also a point.

### White-tailed Deer Youth-Only Seasons

- Age Restriction: ONLY licensed hunters 16 years of age or younger are eligible to participate in youth-only deer seasons.
- Youth-only seasons may run concurrently with other seasons (Archery, Muzzleloader, Special Late) but do not prevent any person from lawfully hunting under the provisions established for those seasons.
- Any lawful means may be used, except in Collin, Dallas, Grayson, and Rockwall counties, where lawful means are restricted to lawful archery equipment only.
- Bag limits and any special requirements (e.g. antler restrictions or mandatory harvest reporting) apply for the county in which youth are hunting
- Youth hunters may harvest any legal buck during youth-only season, and antlerless deer during youth-only season in counties where antlerless harvest is allowed at any time during the general season. See County Listings table, pgs. 68–45 for county specific deer harvest regulations.

### PRONGHORN (BY PERMIT ONLY)

The harvest of pronghorn is by permit only. The permit must be completely filled out and attached to the pronghorn immediately following harvest. Permits are issued to landowners or their agents in areas where there are huntable populations (Trans-Pecos, Permian Basin and Panhandle).

For more information on pronghorn regulations: [tpwd.texas.gov/oa/pronghorn](http://tpwd.texas.gov/oa/pronghorn)

For more information on pronghorn permits and harvest reports: [tpwd.texas.gov/oa/pronghornpermits](http://tpwd.texas.gov/oa/pronghornpermits)

**NOTE:** It is the hunter’s responsibility to verify the permits are issued to the property where they are hunting.

### DESERT BIGHORN SHEEP (BY PERMIT ONLY)

The harvest of desert bighorn sheep (DBS) is by permit only. Permits are issued to landowners or their agents. A limited number of permits are also available through “Big Time Texas Hunts” [tpwd.texas.gov/oa/btth](http://tpwd.texas.gov/oa/btth), and other public hunting: [tpwd.texas.gov/oa/PublicHunting](http://tpwd.texas.gov/oa/PublicHunting).

No person may possess a DBS ram skull obtained after Sept. 1, 2003, unless the skull has been plugged by TPWD or the individual has proof that the skull was legally obtained outside of Texas. Skulls found in the wild may be possessed, provided the individual did not cause or participate in the death of the ram, and TPWD is notified within 48 hours of the skull/horns being found. Individual horns and hornless skulls may be possessed without identification or documentation.

### JAVELINA AND SQUIRREL

See County Listings table, pgs. 68–45.



On-site registration for public hunting is also available online or through the *Texas Hunt & Fish* app.

### MANDATORY Harvest Reporting

Harvest reporting is mandatory for wild turkeys in all counties in both fall and spring seasons. Harvest reporting remains mandatory for buck and antlerless deer in four counties near Dallas, antlerless white-tailed deer in 21 south-central Texas counties (pg. 54), and alligator gar statewide, except Falcon International Reservoir (pg. 29).

Report online or on the Texas Hunt & Fish app: [tpwd.texas.gov/huntandfish](http://tpwd.texas.gov/huntandfish)

# Alligator

## GENERAL INFORMATION

**FEEDING ALLIGATORS:** Except when engaged in hunting, it is against the law to intentionally feed a free-ranging alligator.

**REQUIRED LICENSE:** Alligators may be taken under any resident or non-resident hunting license (except for a non-resident spring turkey license and a non-resident banded bird hunting license).

**LAWFUL HUNTING HOURS:** One-half hour before sunrise to sunset. Between sunset and one-half hour before sunrise, no person shall set any baited line capable of taking an alligator, or remove an alligator from a line set.

**CITES TAGS:** Required in both "Core" and "Non-core" counties and are issued by TPWD. CITES (Convention on International Trade in Endangered Species) is an international agreement between governments to ensure that international trade in wild animals and plants does not threaten their survival.

**SALE OF ALLIGATORS:** Only lawfully harvested alligators may be sold and only to a licensed wholesale dealer or alligator farmer.

**It is unlawful** to take an alligator by means of firearms from, in, on, across, or over public water.

## MEANS AND METHODS FOR ALLIGATORS

- In non-core counties, no person may employ more than one taking device at any time.
- Alligators may only be taken on private property.
- Alligators may be taken from public water, however, the person and the taking device **MUST** be on private property.
- Hook and line (line set) must be secured on private property with a portion of the line above water. Minimum 300 lb. test line.
- Hook-bearing lines may not be placed prior to the open season and shall be removed no later than sunset on the last day of the season.
- Each line set shall be labeled with a plainly visible, permanent, and legibly marked gear tag that contains the full name and current address of the person who set the line and the hunting license number of the person who set the line.
- Line sets shall be inspected daily, and alligators shall be harvested, documented, and removed **IMMEDIATELY** upon discovery.
- Firearms (excluding rimfire), air guns, and arrow guns may only be used to hunt on private land in non-core counties.
- Firearms (including rimfire), air guns, and arrow guns may be used to dispatch alligators legally captured on a taking device in any county.

- Gigs, hand-held snares (with integral locking mechanism), and lawful archery equipment (with barbed arrow), must have a float attached to the line. The float shall be no less than 6" X 6" X 8" or, if the float is spherical, no less than 8 inches in diameter.

## NON-CORE COUNTIES

In non-core counties, the open season for alligators is Apr 1 – Jun 30. The bag limit in non-core counties is one alligator per person per license year. Alligators **CAN NOT** be taken during this season on any property where alligators were taken during the September season.

Upon killing an alligator in a non-core county, a person must **IMMEDIATELY** affix a WRD (pg. 50) to the alligator, which shall accompany the alligator until it is permanently tagged with a CITES tag. **WITHIN 72 hours**, complete the Non-Core Alligator Hide Tag Report (pg. 50) and mail it to TPWD, 4200 Smith School Road, Austin, TX 78744, along with a \$21 hide tag fee (check or money order only). The department will mail a CITES tag to the hunter. Upon receipt, the tag must be permanently affixed to the alligator within 10 inches of the tip of the alligator's tail.

## CORE COUNTIES

In Angelina, Brazoria, Calhoun, Chambers, Galveston, Hardin, Jackson, Jasper, Jefferson, Liberty, Matagorda, Nacogdoches, Newton, Orange, Polk, Refugio, Sabine, San Augustine, San Jacinto, Trinity, Tyler, and Victoria counties (core counties), and on properties in other counties for which TPWD has issued CITES tags to the landowner, the open season for alligators is Sept. 10-30. Core counties are those counties constituting the prime historical habitat for the American alligator in Texas, where commercial hunting is viable and the department engages in significant biological monitoring of the resource and manages harvest through tag issuance to landowners.

In core counties and on special properties, no person may hunt an alligator without possessing a valid CITES tag on their person prior to hunting an alligator. CITES tags in these counties are issued to landowners or landowners' agents following a site inspection and evaluation by TPWD. CITES tags may only be used on the property they are allocated to, and cannot be transferred to other properties. For information about tag issuance and requirements, contact the Alligator Program at (409) 736-3625.

## ALLIGATORS IN TEXAS: RULES, REGULATIONS AND GENERAL INFORMATION

A department publication that provides additional regulations and information, including how to determine sex of an alligator (required for Alligator Hide Tag Reports). For a copy of the publication, call (800) 792-1112 (menu 5) or visit [tpwd.texas.gov/oa/alligator](http://tpwd.texas.gov/oa/alligator).

# Upland Game Birds

**Bobwhite quail**  
**Chachalaca**

**Gambel's quail**  
**Pheasant**

**Scaled quail** (or Blue quail)  
**Wild turkey**

Species with no open season (**cannot be hunted**) include Attwater's prairie-chicken, Mearns (Montezuma) quail, and lesser prairie-chicken.

**It is unlawful** to possess a pheasant with proof of sex removed.

**It is unlawful** to hunt pheasant by the aid of dragging of a cable, chain, rope, or other device connected to or between a moving object or objects.

## UPLAND GAME BIRDS SEASONS AND LIMITS

SPECIES	SEASON	OPEN COUNTIES	DAILY BAG	POSSESSION
<b>Pheasant</b>	Dec 7 - Jan 5	See county-level restrictions (pg. 29).	3 cocks	9 cocks
<b>Quail</b> (Bobwhite, Scaled or Blue, and Gambel's)	Oct 26 - Feb 23	Statewide	15 in the aggregate	45 in the aggregate
<b>Chachalaca</b>	Oct 26 - Feb 23	Cameron, Hidalgo, Starr, and Willacy counties <b>ONLY</b>	5	15

## WILD TURKEY

See County Listings table for season dates and special requirements, pgs. 68–45.

Harvest reporting is mandatory for wild turkeys in all counties.

**All turkey must be tagged** with a tag from the hunter's license **IMMEDIATELY** upon harvest, and in a secure manner anywhere on the turkey (Tagging Turkey, pg. 7). Hunters in possession of a digital license and tags should refer to [tpwd.texas.gov/digitaltags](http://tpwd.texas.gov/digitaltags) for tagging instructions.

**It is unlawful** to hunt roosting turkeys by any means at any time or to release turkeys without department authorization.

## Special regulations for East Zone Spring season in certain East Texas counties

Shotgun and lawful archery equipment are the only legal methods of take; no hunting over bait.

**Counties in East Zone:** Bowie (north of U.S. 82), Cass, Fannin (north of U.S. 82), Grayson, Jasper (other than the Angelina National Forest), Lamar (north of U.S. 82), Marion, Nacogdoches, Newton, Polk, Red River (north of U.S. 82), and Sabine counties.



On-site registration for public hunting is also available online or through the *Texas Hunt & Fish app*.

## MANDATORY Harvest Reporting

Harvest reporting is mandatory for wild turkeys in all counties in both fall and spring seasons. Harvest reporting remains mandatory for buck and antlerless deer in four counties near Dallas, antlerless white-tailed deer in 21 south-central Texas counties (pg. 54), and alligator gar statewide, except Falcon International Reservoir (pg. 29).

Report online or on the Texas Hunt & Fish app: [tpwd.texas.gov/huntandfish](http://tpwd.texas.gov/huntandfish)

# Migratory Game Birds

Nothing in this publication authorizes any person to violate federal laws governing migratory game birds. Federal regulations related to migratory game birds are located in Title 50, Code of Federal Regulations, Part 20. For more information call the U.S. Fish and Wildlife Service (USFWS) (505) 248-7889 or visit [fws.gov/birds](https://www.fws.gov/birds).

## Includes all wild species of:

<b>Coots</b>	<b>Ducks</b>	<b>Mergansers</b>	<b>Snipe</b> (Wilson's or jacksnipe)
<b>Doves</b> (mourning, white-winged, white-tipped)	<b>Gallinules</b>	<b>Rails</b>	<b>Woodcock</b>
	<b>Geese</b>	<b>Sandhill cranes</b>	

## HARVEST INFORMATION PROGRAM (HIP)

No person shall hunt migratory game birds in this state unless that person is HIP-certified in Texas. The federally mandated HIP is used to identify migratory game bird hunters for USFWS harvest surveys. Hunters who buy a Migratory Game Bird Hunting Endorsement, including Super Combos, will be asked a few simple questions about their migratory bird hunting activities.

## SPECIAL VETERANS - ACTIVE MILITARY PERSONNEL WATERFOWL HUNTING DAYS

A special season is now open to veterans and current members of the US Armed Forces on active duty, including members of the National Guard and Reserve on active duty (other than for training). The term "veteran," is defined, per section 101 of title 38, United States Code, as a person who served in the active military, naval, or air service, and who was discharged or released there from under conditions other than dishonorable.

Proof of eligibility is required and must be carried on person while hunting. A driver's license or other state-issued identification indicating that the person to whom it was issued is a veteran of the United States Armed Forces; a copy of the DD214 or DD215 discharge documentation issued to the person by the United States Department of Defense; or any other identification issued by the federal government indicating that the person to whom it was issued is a veteran or member of the armed forces on active duty is proof of eligibility.

**Please report Migratory Game Bird bands.** Check migratory game birds harvested (especially doves) for leg bands and report them to [reportband.gov](https://reportband.gov).

## MEANS AND METHODS

- Shotguns, lawful archery equipment, falconry, dogs, artificial decoys, and manual or mouth-operated bird calls are legal.
- A shotgun is the only legal firearm for hunting migratory game birds. Shotguns must NOT be larger than 10-gauge, must be fired from the shoulder, and must be incapable of holding more than three shells. Shotguns capable of holding more than three shells must be plugged with a one-piece filler which cannot be removed without disassembling the gun, so the gun's total capacity does not exceed three shells.
- Hunting is permitted in the open or from a blind or other type of concealment or from floating craft or motor boat provided that all motion resulting from sail or motor has ceased. Sails must be furled and motor turned off before shooting starts.
- A craft under power may be used to retrieve dead or crippled birds; however, crippled birds may not be shot from such craft under power.
- No person, while hunting waterfowl anywhere in the state, may possess shotgun shells containing lead shot or loose lead shot for use in muzzleloaders. Approved shot includes steel (including copper, nickel or zinc-coated steel), bismuth-tin, tungsten-iron, tungsten-polymer (e.g. moly-shot), and any other nontoxic material approved by the Director of the USFWS. [tpwd.texas.gov/oa/NontoxicShot](https://tpwd.texas.gov/oa/NontoxicShot)

## Baiting Regulations

Directly or indirectly placing, exposing, depositing,

distributing or scattering of salt, grain, or other feed that could serve as a lure or attraction for migratory game birds to, on or over areas where hunters are attempting to take them is **prohibited by federal law**. Hunters are responsible for knowing whether an area is baited or not.

For further information on federal regulation regarding baiting: [tpwd.texas.gov/oa/DoveBaiting](https://tpwd.texas.gov/oa/DoveBaiting) and waterfowl hunting [tpwd.texas.gov/oa/WaterfowlBaiting](https://tpwd.texas.gov/oa/WaterfowlBaiting).

### A hunter MAY hunt migratory game birds including waterfowl, coots and sandhill cranes:

- on or over standing crops, standing flooded crops and flooded harvested crops;
- over natural vegetation (pg. 47) that has been manipulated (pg. 47);
- on or over a normal soil stabilization practice that is defined as a planting for agricultural soil erosion control or post-mining land reclamation conducted in accordance with official recommendations of State Extension Specialists of the Cooperative Extension Service of the U.S. Department of Agriculture (USDA);
- on or over lands or areas where seeds or grains have been scattered solely as a result of a normal agricultural practice which is defined as a planting, harvesting or post-harvest manipulation conducted in accordance with official recommendations of State Extension Specialists of the Cooperative Extension Service of the USDA. Does not include the broadcast spreading of seed that is normally drill-planted;

- over crops or natural vegetation where grain has been inadvertently scattered as a result of entering or leaving a hunting area, placing decoys or retrieving downed birds;
- using natural vegetation or crops to conceal a blind, provided that if crops are used to conceal a blind, no grain or other feed is exposed, deposited, distributed or scattered in the process.

**A person may hunt doves over planted crops that have been manipulated for the purpose of hunting.** Waterfowl and sandhill cranes may NOT be hunted where grain or feed has been distributed or scattered as a result of manipulation or livestock feeding.

## UNLAWFUL ACTIVITIES

### It is UNLAWFUL to:

- hunt migratory birds with the aid of bait, or on or over any baited area (pg. 46);
- hunt over any baited area until 10 days after all baiting materials have been removed and a game warden has confirmed removal of baiting materials;
- place or allow the placement of bait on or adjacent to any area where migratory game birds could be attracted for the purpose of hunting migratory game birds by any person;
- hunt waterfowl or sandhill cranes over manipulated planted millet in the first year after planting;
- hunt waterfowl or sandhill cranes over crops that have been manipulated, unless the manipulation is a normal agricultural post-harvesting manipulation in accordance with official recommendations of State Extension Specialists of the Cooperative Extension Service of the USDA;
- use any firearm other than a legal shotgun; use a trap, snare, net, fishhook, poison, drug, explosive or stupefying substance; use live birds as decoys; use recorded or electronically amplified bird calls or sounds; or use a sinkbox (definition, pg. 48);
- hunt from or by means of motor vehicles or aircraft of any kind (including stationary) except paraplegics and single or double amputees of legs may hunt from stationary motor-driven conveyances;
- use motor-driven land, water or air conveyances or sailboats to concentrate, drive, rally or stir up any migratory game bird; or
- hunt where tame or captive live ducks or geese are present unless such birds are or have been for a period of 10 consecutive days prior to such taking confined within an enclosure which substantially reduces the audibility of their calls and totally conceals such birds from the sight of wild migratory game birds.

## DOCUMENTATION

All harvested migratory game birds not in the immediate possession of the person who harvested them must be tagged with a WRD (pg. 50) until the birds reach the possessor's personal residence and are finally processed. If a hunter's personal birds have been finally processed at a cold storage or processing facility and the hunter transports someone else's birds, then a WRD must accompany those birds until they reach the possessor's permanent residence. A person

may give, leave, receive or possess (e.g. cleaning or storage) any species of legally taken migratory game birds, or parts of birds, that are protected by a bag or possession limit, if the birds are accompanied by a WRD.

All hunters must keep migratory game birds included in their bag or possession limit separate and identifiable from other hunters' birds while in the field or during transport to the possessor's permanent residence, unless accompanied by a WRD.

## PROCESSING OF MIGRATORY GAME BIRDS

Except for migratory game birds processed at a cold storage or processing facility, one fully feathered wing or head must remain attached to dressed migratory game birds (except doves) while being transported between the place taken and the personal residence of the hunter, the personal residence of another person receiving the dressed birds or a migratory bird preservation facility.

Migratory game birds may be dressed for **immediate cooking** at a place other than a permanent residence (e.g., hunting camp). This does not include placing dressed birds in a cooler/refrigerator for later consumption while at a place other than a permanent residence.

## SHIPPING

When shipping migratory game birds, the package must be marked with the name and address of the sender, the name and address of the persons to whom the birds are being shipped and the number of birds of each species contained in the package.

## IMPORTATION LIMIT

It is illegal to import migratory game birds belonging to another person into the United States. The number of migratory game birds imported from Mexico or Canada may not exceed the export limit set by the Mexican state or Canadian province from which they were taken. One fully feathered wing or head must remain attached to all migratory game birds imported from Canada or Mexico.

[tpwd.texas.gov/oa/MexicoImport](https://tpwd.texas.gov/oa/MexicoImport)

## HUNTING ON PUBLIC WATERS

Waterfowl hunters utilizing public water are encouraged to contact a local TPWD Law Enforcement office (pg. 49) or reservoir controlling authority for information on rules or permit requirements before hunting. On public hunting lands owned, administered, or leased by TPWD, a person is required to possess both a valid hunting license and Annual Public Hunting Permit to hunt migratory game birds. Licensed supervised youth under the age of 17 may hunt free of charge on these lands. For more information, check the TPWD Public Hunting Lands Map Booklet available at all TPWD offices, or [tpwd.texas.gov/oa/PublicHunting](https://tpwd.texas.gov/oa/PublicHunting).

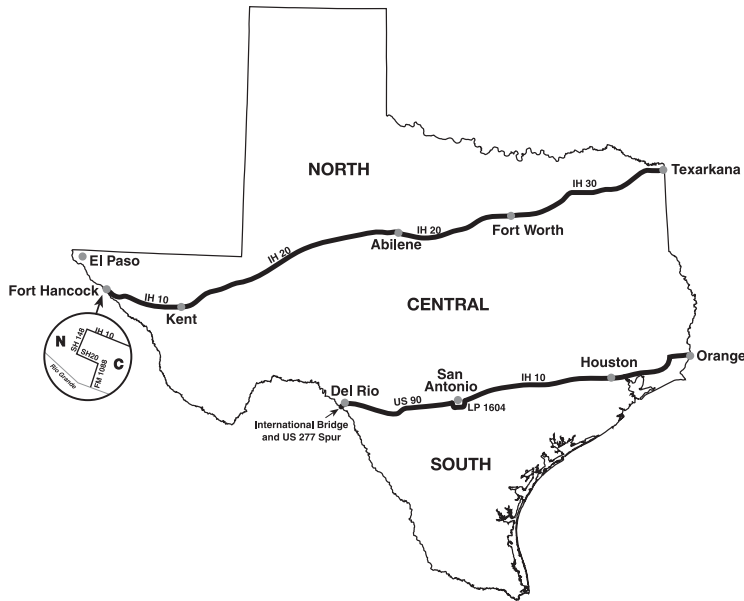
## DOVE SEASONS, LIMITS, AND ZONES

There is no closed season or bag limit restrictions for Eurasian collared-doves or common pigeons (rock doves). However, it is recommended that hunters leave plumage on these birds for species identification to verify they are not part of a migratory game bird daily bag or possession limit (pg. 21).

Shooting hours are from one-half hour before sunrise to sunset.

ZONE	SEASON DATES	DAILY BAG LIMIT	POSSESSION LIMIT
<b>REGULAR DOVE SEASON</b>			
North Zone	Sep 1 - Nov 10 Dec 20 - Jan 7	15 mourning, white-winged and white-tipped doves in the aggregate, to include not more than 2 white-tipped doves	45 mourning, white-winged and white-tipped doves in the aggregate, to include not more than 6 white-tipped doves
Central Zone	Sep 1 - Oct 27 Dec 13 - Jan 14		
South Zone	Sep 14 - Oct 27 Dec 13 - Jan 21		
<b>SPECIAL WHITE-WINGED DOVE DAYS</b>			
South Zone	Sep 1-2, 6-8, 13 Shooting hours are from noon to sunset	15 mourning, white-winged and white-tipped doves in the aggregate, to include not more than 2 mourning doves and 2 white-tipped doves	45 mourning, white-winged and white-tipped doves in the aggregate, to include not more than 6 mourning doves and 6 white-tipped doves

### HUNTING ZONES - DOVE



## DUCK SEASONS, LIMITS, AND ZONES

Shooting hours are from one-half hour before sunrise to sunset.

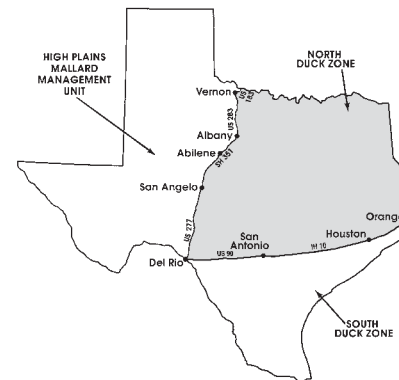
ZONE	REGULAR DUCK SEASON	YOUTH* & VETERANS**	DUSKY DUCK***
Early Teal (statewide) Includes blue-winged, green-winged, and cinnamon teal	Sep 14-29		
High Plains Mallard Management Unit	Oct 26-27 Nov 1 - Jan 26	Oct 19-20	Nov 4 - Jan 26
North Zone	Nov 9 - Dec 1 Dec 7 - Jan 26	Nov 2-3	Nov 14 - Dec 1 Dec 7 - Jan 26
South Zone	Nov 2 - Dec 1 Dec 14 - Jan 26	Oct 26-27	Nov 7 - Dec 1 Dec 14 - Jan 26

\* 16 years of age or younger. Regular season bag limits apply for all legal species of geese, ducks, mergansers, coots, moorhens, and gallinules. Dusky ducks are legal during the Youth-only and Veteran Special season. Youth hunters must be accompanied by an adult at least 18 years of age. A Federal Ducks Stamp is required for all persons 16 years of age or older.

\*\* Restricted to veterans and current members of the US Armed Forces on active duty, including members of the National Guard and Reserve on active duty (other than for training).

\*\*\* A dusky duck is defined as a mottled duck, Mexican duck, black duck and their hybrids. Due to similarities in appearance, all dusky ducks will be off limits during the first five days of the season in each zone. Recent concerns about the mottled duck populations by the U.S. Fish and Wildlife Service have forced a delay in harvest.

### HUNTING ZONES - DUCKS, MERGANSER, AND COOT



**High Plains Mallard Management Unit:** West of a line from the International Toll Bridge at Del Rio, north along U.S. Hwy. 277 to Abilene, State Hwy. 351 and State Hwy. 6 to Albany, and U.S. Hwy. 283 to Vernon, east along U.S. Hwy. 183 to the Texas-Oklahoma state line.

**South Zone:** South of a line from the International Bridge and U.S. 277 Spur at Del Rio, east along U.S. 90 to San Antonio, east along IH 10 to the Texas-Louisiana state line.

**North Zone:** Remainder of the state.

### DAILY BAG AND POSSESSION LIMIT

**EARLY TEAL - 6** in aggregate

**REGULAR DUCK - 6** in aggregate  
(includes mergansers)

**Includes no more than:**

- 5 mallards (*only 2 of which may be hens*)
- 3 wood ducks
- 2 redheads
- 2 canvasbacks
- 1 scaup
- 1 pintail
- 1 dusky duck (*mottled duck, Mexican duck black duck and their hybrids are closed the first five days of the season in each zone*)
- All other species not listed: 6

**COOT - 15**

**POSSESSION LIMIT**

Three times the daily bag limit

**FALCONRY**

Daily bag and possession limits shall not exceed 3 and 9 migratory game birds, respectively, singly or in the aggregate.

## GOOSE SEASONS, LIMITS, AND ZONES

Shooting hours are from one-half hour before sunrise to sunset.

ZONE	SPECIES	DATES
East	Early Canada Goose Only	Sep 14-29
	Dark Goose: All other geese (not light), including Canada and white-fronted	Nov 2 - Jan 26
	Light Goose: Snow (including blue) and Ross's geese	Nov 2 - Feb 14
West	Light Goose: Snow (including blue) and Ross's geese Dark Goose: All other geese (not light), including Canada and white-fronted	Nov 2 - Feb 2

### HUNTING ZONES - GOOSE



**WESTERN ZONE:** West of a line from the International Toll Bridge at Laredo, north following IH-35 and 35W to Fort Worth, northwest along U.S. Hwy. 81 and 287 to Bowie, north along U.S. Hwy. 81 to the Texas-Oklahoma state line.

**EASTERN ZONE:** Remainder of the state.

### DAILY BAG & POSSESSION LIMIT

#### WESTERN ZONE

**Light Geese**  
5 in the aggregate

**Dark Geese**  
5 in the aggregate

#### EASTERN ZONE

**Early Canada Goose**  
5

**Regular Light Geese**  
5 in the aggregate

**Regular Dark Geese**  
5, to include no more than 2 white-fronted geese

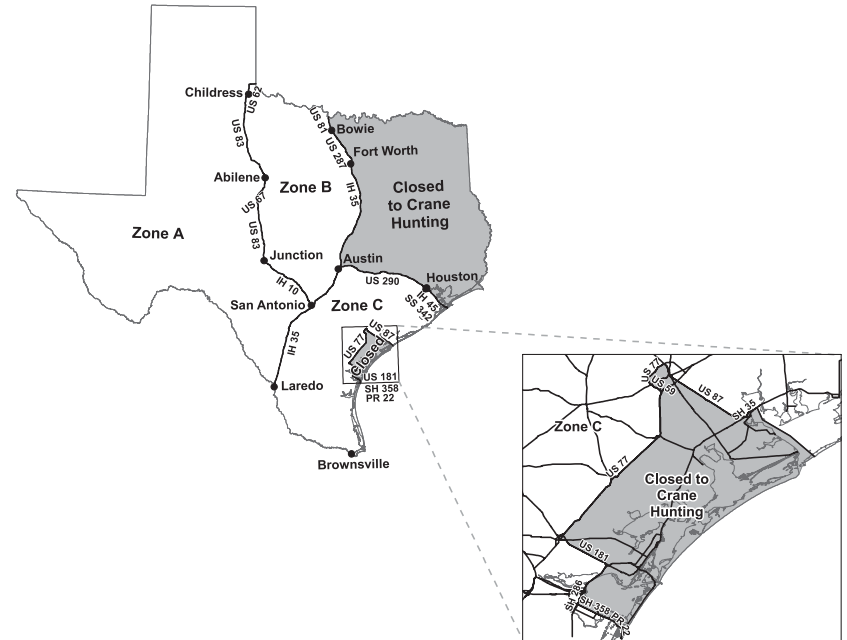
**POSSESSION LIMIT**  
Three times the daily bag limit

## SANDHILL CRANE SEASONS, LIMITS, AND ZONES

Shooting hours are from one-half hour before sunrise to sunset.

ZONE	DATES	DAILY BAG LIMIT	POSSESSION LIMIT
A	Oct 26 - Jan 26	3	9
B	Nov 22 - Jan 26	3	9
C	Dec 14 - Jan 19	2	6

### HUNTING ZONES - SANDHILL CRANE



### OTHER MIGRATORY GAMEBIRDS, SEASONS, AND LIMITS (STATEWIDE)

SPECIES	DATES	DAILY BAG LIMIT	POSSESSION LIMIT
King and Clapper Rails	Sep 14-29 Nov 2 - Dec 25	15 in the aggregate	45 in the aggregate
Sora and Virginia Rails	Sep 14-29 Nov 2 - Dec 25	25 in the aggregate	75 in the aggregate
Moorhens (Common Gallinules) and Purple Gallinules	Sep 14-29 Nov 2 - Dec 25	15 in the aggregate	45 in the aggregate
Woodcock	Dec 18 - Jan 31	3 in the aggregate	9 in the aggregate
Wilson's Snipe (Common snipe or jacksnipe)	Nov 2 - Feb 16	8 in the aggregate	24 in the aggregate



GET THE MOST UP-TO-DATE REGULATIONS:  
**OUTDOORANNUAL.COM**

## Nongame Species

A hunting license is required for the take of nongame species. There are no closed seasons, bag limits or possession limits; and, they may be hunted at any time by any lawful means or methods on private property. There may be restrictions for certain species of nongame animals, including possession limits (see below). In addition, be aware that public hunting lands may also have additional restrictions. If hunting at night, as a courtesy please contact your local game warden at [tpwd.texas.gov/oa/GameWarden](http://tpwd.texas.gov/oa/GameWarden).

**NONGAME ANIMALS** (included, but not limited to the following):

<b>Armadillos</b>	<b>Flying squirrels</b>	<b>Mountain lions</b>	<b>Rabbits and Hares</b>
<b>Bobcats</b>	<b>Frogs</b>	<b>Porcupines</b>	<b>Turtles</b> (freshwater)
<b>Coyotes</b>	<b>Ground squirrel</b>	<b>Prairie dogs</b>	

## UNLAWFUL ACTIVITIES FOR TAKE, POSSESS OR SALE OF NONGAME WILDLIFE

It is **UNLAWFUL** to:

- take ANY nongame species for commercial purposes (sale, offer for sale, barter, or exchange) from public lands or waters.
- possess armadillos for the purpose of sale.
- purchase, sell, trade, transport or ship out of state bobcat pelts without the appropriate pelt tag (CITES) attached. Pelt tags may be obtained from any permitted bobcat pelt dealer, or offices listed on pg. 49. For additional information contact TPWD at (800) 792-1112, menu 7, option 9 or (512) 389-4481.
- transport or sell live coyotes, as they are currently under a statewide rabies quarantine. Additional information: [tpwd.texas.gov/oa/TransportWildlife](http://tpwd.texas.gov/oa/TransportWildlife).
- possess a diamondback terrapin at any time.
- hunt (capture, trap, take, collect, or kill) any wild animal or wild bird on a public road or the right-of-way of public roads, except that a person may capture indigenous reptiles and amphibians (for recreational purposes ONLY) on the shoulder or unpaved right-of-way of a public roadway, provided the person possesses a valid Reptile and Amphibian Endorsement, the person employs non-lethal means ONLY to capture the reptiles or amphibians, the person does not possess a trap, and the person is visibly wearing at least 144 square inches of reflective material, both front and back. No person may use artificial light from a motor vehicle to locate, capture, or attempt to capture a reptile or amphibian.
- collect from the wild, sell, offer for sale or exchange certain species of nongame wildlife (including rattlesnakes and other reptiles or amphibians) unless a proper nongame permit has been obtained from TPWD and all reporting and recordkeeping requirements are met: [tpwd.texas.gov/oa/CommercialPermits](http://tpwd.texas.gov/oa/CommercialPermits).
- take or possess any freshwater turtles taken from the wild for commercial purposes.
- possess more than 6 individuals of any species of freshwater turtle from the wild.
- sell rattlesnakes at a roundup without a nongame permit/license to do so.

For more information on nongame regulations, permit requirements, and lists of lawful and prohibited species, contact TPWD at (800) 792-1112, menu 7 or (512) 389-4481, or go to Nongame Permits online: [tpwd.texas.gov/oa/NongamePermits](http://tpwd.texas.gov/oa/NongamePermits).

## Fur-bearing Animals

A person who possesses a hunting license may take a fur-bearing animal (furbearer), provided the furbearer (or any part thereof) is not to be sold or exchanged for anything of value. There is no bag or possession limit on furbearers. A trapper's license is required for the take of furbearers for the sale of pelts and/or carcasses.

**Fur-bearing animals include:**

<b>Badger</b>	<b>Mink</b>	<b>Opossum</b>	<b>Raccoon</b>
<b>Beaver</b>	<b>Muskrat</b>	<b>Otter</b>	<b>Skunk</b>
<b>Fox</b>	<b>Nutria</b>	<b>Ring-tailed cat</b>	

## TAKE, POSSESS OR SALE OF FURBEARERS

- Hunter education requirements apply.
- A department-issued CITES tag is required to be attached to all otters taken and possessed in this state. No otters may be taken or collected from a public roadway.
- Furbearers may be hunted at night on private property with the aid of an artificial light.
- No license is required if nuisance furbearers are taken while causing loss or damage to agricultural crops, livestock, poultry, or personal property. However, such animals or their pelts may NOT be possessed or sold.
- There is no closed season for recreational harvest.

For more information on COMMERCIAL seasons, legal means, and other rules for furbearers and their pelts, consult the Fur-bearing Animal Digest, available at TPWD Law Enforcement offices (pg. 49), calling (800) 792-1112, or online: [tpwd.texas.gov/oa/FurBearing](http://tpwd.texas.gov/oa/FurBearing).

## Endangered, Threatened and Other Protected Animals

In Texas, animal or plant species of conservation concern may be listed as threatened or endangered under the authority of state law and/or under the U.S. Endangered Species Act (ESA). It is unlawful for any person to hunt threatened or endangered nongame species. To sell or purchase goods made from threatened or endangered species, proper documentation must accompany the goods. For a list of threatened and endangered species in Texas: [tpwd.texas.gov/oa/endangered](http://tpwd.texas.gov/oa/endangered).

### PROTECTED BIRDS

All indigenous birds (including, but not limited to, raptors and songbirds) are protected by various state and federal laws and may not be killed, taken from the nest, picked up, or possessed for any reason, and their feathers may not be possessed or sold (except for the unprotected birds listed in the Non-Protected and/or Exotic Species section). Arts and crafts may not include these protected species under any circumstances. A federal depredation permit may be issued to individuals who have evidence clearly showing certain protected wildlife is causing serious damage to commercial agricultural, horticultural, or aquacultural interests, or presents a threat to public safety. For more information, [tpwd.texas.gov/oa/depredation](http://tpwd.texas.gov/oa/depredation).

### BATS

May not be hunted, killed, possessed, purchased or sold; however, bats may be moved, trapped, or killed if inside or on a building occupied by people. A person may transport a bat for the purpose of laboratory testing if there is a rabies or white-nosed syndrome (WNS) concern. Excluding bats from buildings is discouraged from May 1 – August 15 when young are unable to fly and may be entrapped. Please report suspected WNS cases to [wns@tpwd.texas.gov](mailto:wns@tpwd.texas.gov).

### BLACK BEARS

Black bears are listed as a state-threatened species by TPWD. They are protected and cannot be hunted or killed. Please report black bear sightings or mortalities by calling (512) 389-4505. For more information visit [tpwd.texas.gov/huntwild/hunt/resources/bear\\_safety](http://tpwd.texas.gov/huntwild/hunt/resources/bear_safety)

### “CANNED HUNTS” (DANGEROUS WILD ANIMALS)

No person may kill or attempt to injure a dangerous wild animal (African or Asiatic lion, tiger, leopard, cheetah, hyena, bear, elephant, wolf, or rhinoceros, or any subspecies or hybrid of these animals) that is held in captivity in this state or that is released from captivity in this state for the purpose of being killed, nor may any person conduct, promote, advertise, or assist in the hunting of a dangerous wild animal.

## Non-protected and/or Exotic Species

On private property, there are no required means and methods of take, state bag or possession limits, or closed seasons (hunting hours) on exotic animals, exotic fowl or other species not included in any of the previously addressed categories.

### EXOTIC ANIMALS AND FOWL

An exotic animal is any animal that is not indigenous to Texas, including but not limited to aoudad sheep, axis deer, elk, sika deer, fallow deer, red deer, and blackbuck and nilgai antelope. An exotic fowl is any avian species that is not indigenous to Texas and is also not protected by the federal Migratory Bird Treaty Act, including but not limited to ratites (emu, ostrich, rhea, cassowary, etc.). Hunting License required.

#### It is UNLAWFUL to:

- hunt an exotic without a valid hunting license (Class C misdemeanor);
- hunt an exotic on a public road or right-of-way. (Class A misdemeanor);
- hunt an exotic without the landowner's permission. (Class A misdemeanor); or
- possess an exotic or the carcass of an exotic without the owner's consent (Class A misdemeanor).

### FERAL HOGS AND COYOTES

- Hunter Education requirements apply.
- No hunting license is required to hunt feral hogs on private property with landowner authorization.

- Transportation and release of live feral hogs is unlawful, unless in compliance with Texas Animal Health Commission (TAHC) regulations. The TAHC regulates the movement of feral swine for disease-control purposes. For more information please call TAHC at (800) 550-8242 or visit [tpwd.texas.gov/oa/tahc](http://tpwd.texas.gov/oa/tahc).
- No hunting license is required to hunt depredating coyotes on private property with landowner authorization.

### MOUNTAIN LIONS

Mountain lions are classified as nongame animals; they are not protected and can be harvested at any time. Please report mountain lion sightings, harvests or mortalities to (512) 389-4505. Look for new mountain lion reporting features to be available soon in the Texas Hunt & Fish app.

### UNPROTECTED BIRDS

Birds not protected by any state or federal law include European starlings, English sparrow (house sparrow), feral rock doves (common pigeon), Egyptian geese, Muscovy ducks (except in Hidalgo, Starr, Zapata counties) and Eurasian collared-doves; these species may be killed at any time, their nests or eggs destroyed, and their feathers possessed. Hunting license required.

## COUNTY LISTINGS

### Restricted Areas in Counties

#### UNLAWFUL MEANS AND METHODS IN SPECIFIC COUNTY AREAS

##### It is UNLAWFUL to:

- possess, shoot or hunt with a firearm or any archery equipment on all land and water in the Aransas River and Poesta Creek in Bee County; on all land and public water in the state-owned riverbeds of La Salle and McMullen counties; and on all land and public water in the state-owned riverbeds of the Nueces, Frio and Atascosa rivers in Live Oak County; except for waterfowl hunting on any reservoir (existing or to be constructed) owned, operated, or maintained by a government entity.
  - discharge a firearm or shoot an arrow in or on the bed or bank of a navigable river or stream. This law does not apply to persons fishing by means of archery equipment (special gear requirements apply, pg. 23), lawful alligator hunting activity, or shotguns loaded with shot, including buckshot. A shotgun slug is prohibited. Exemptions allow the take of venomous snakes and non-indigenous rodents by landowners or their agent(s). Other exemptions may be in effect. **Most current information:** [tpwd.texas.gov/oa/RestrictedAreas](http://tpwd.texas.gov/oa/RestrictedAreas)
  - hunt on water of Stillhouse Hollow Reservoir or land adjacent to the reservoir owned by the federal government in Bell County, except for game birds hunted with a shotgun. A hunter must be 600 feet from the nearest private property line.
  - discharge a pistol or rifle in, on, along, or across Wallisville Reservoir, and Lake Anahuac in Chambers County; the water of the Trinity River or Wallisville Reservoir in Liberty County.
  - discharge any firearm or shoot any crossbow or bow and arrow on, along, or across the waters of Oyster Bayou in Chambers County from State Hwy. 65 south to the mouth of Oyster Bayou in the East Bay.
  - hunt wild animals or wild birds or target shoot on land in Harris County owned by another without having in immediate possession written consent of the landowner of that land. The written consent must contain the hunter's name, identify the land on which hunting or target shooting is permitted, be signed by the landowner or legal agent for the owner, and must show the address and phone number of the person signing consent.
- For additional restrictions in Callahan, Cass, Collin, Harrison, Marion, Morris, Panola and Wood counties:** [tpwd.texas.gov/oa/RestrictedAreas](http://tpwd.texas.gov/oa/RestrictedAreas).

### Hunting on Federal Lands

- It is the responsibility of the hunter to be aware of applicable federal and state regulations on federal lands (Forest Service, National Recreation Areas, Corps of Engineers, etc.).
- On the LBJ National Grasslands in Montague and Wise counties antlerless may only be taken during archery, youth-only, and during the 4-day season (known as doe days).
- On all other US Forest Service (USFS) lands, antlerless deer may only be taken during archery, muzzleloader, and the youth-only seasons.

#### HUNTING ON FEDERAL OR OTHER GOVERNMENTAL LANDS

When hunting on U.S. Forest Service, Army Corps of Engineers, River Authority properties or other lands owned or administered by units of government (federal, state, or local), additional regulations and/or requirements may apply. It is the responsibility of the hunter to determine if such additional regulations or requirements apply.

- U.S. Forest Service (USFS) - on USFS properties managed by TPWD through the Public Hunting Program, antlerless deer may be taken by special drawn hunt permit. These properties include Alabama Creek WMA, Bannister WMA, Caddo National Grasslands WMA, Moore Plantation WMA, Sam Houston National Forest WMA. [www.fs.fed.us/visit/know-before-you-go/hunting](http://www.fs.fed.us/visit/know-before-you-go/hunting)
- Army Corps of Engineers: [tpwd.texas.gov/oa/USACE](http://tpwd.texas.gov/oa/USACE)
- River Authority: [tpwd.texas.gov/oa/RiverAuthorities](http://tpwd.texas.gov/oa/RiverAuthorities)

#### ANNUAL PUBLIC HUNTING PERMIT

The Annual Public Hunting Permit (also known as walk-in) provides nearly year-round hunting on property that TPWD owns or leases from various agencies, corporations, and private landowners. In order to hunt on these public hunting lands, persons age 17 or older must possess a TPWD Annual Public Hunting Permit, a hunting license, and any required endorsements. Youth (under age 17) are required to have a Texas hunting license but are not required to possess their own permit to hunt or fish on these lands; however, they must hunt or fish under the supervision of an authorized adult (age 18 or older) who possesses the permit.

[tpwd.texas.gov/oa/publichunting](http://tpwd.texas.gov/oa/publichunting)



On-site registration for public hunting is also available online or through the *Texas Hunt & Fish app*.

### MANDATORY Harvest Reporting

Harvest reporting is mandatory for wild turkeys in all counties in both fall and spring seasons. Harvest reporting remains mandatory for buck and antlerless deer in four counties near Dallas, antlerless white-tailed deer in 21 south-central Texas counties (pg. 54), and alligator gar statewide, except Falcon International Reservoir (pg. 29).

Report online or on the Texas Hunt & Fish app: [tpwd.texas.gov/huntandfish](http://tpwd.texas.gov/huntandfish)

# COUNTY LISTINGS TABLE

Ⓛ=LATE SEASON    Ⓐ=ARCHERY    Ⓨ=YOUTH ONLY (pg. 48 for youth-only bag limits and requirements)    Ⓜ=MUZZLELOADER

County	White-tailed Deer							Mule Deer										
	GENERAL	LATE	ARCHERY, YOUTH, MUZZLELOADER			BAG LIMITS & RESTRICTIONS			GENERAL & ARCHERY		BAG LIMITS & RESTRICTIONS							
	Nov 2 - Jan 5	Nov 2 - Jan 19	Jan 6 - Jan 19	Jan 20 - Feb 2	Ⓐ	Ⓨ	Ⓜ	Buck Limit	Antlerless Limit	Max Combined Limit	Restrictions & Regulations	Nov 23 - Dec 8	Nov 29 - Dec 15	Ⓐ	Sep 28 - Nov 1	Buck Limit	Max Combined Limit	Restrictions & Regulations
Anderson	•				•	•	•	2	2	4	AR, W2							
Andrews	•				•	•	•	1	2	3		•	•	1			AR, M1	
Angelina	•				•	•	•	2	2	4	AR, FS, W2							
Aransas		•		•	•	•	•	3	5	5								
Archer	•	•			•	•	•	2	5	5	AR							
Armstrong	•	•			•	•	•	1	5	5		•	•	1			AR, M1	
Atascosa		•		•	•	•	•	2	5	5	AR							
Austin	•				•	•	•	2	2	4	AR, HR, W3							
Bailey	•				•	•	•	1	2	3		•	•	1			AR, M1	
Bandera	•	•			•	•	•	2	5	5	CWD							
Bastrop	•				•	•	•	2	2	4	AR, HR, W3							
Baylor	•	•			•	•	•	2	5	5								
Bee		•		•	•	•	•	3	5	5								
Bell - E. of IH35	•				•	•	•	2	2	4	AR, W2							
Bell - W. of IH35	•	•			•	•	•	2	5	5	AR							
Bexar	•	•			•	•	•	2	5	5	CWD							
Blanco	•	•			•	•	•	2	5	5								
Borden	•	•			•	•	•	1	5	5		•	•	1			M1	
Bosque	•	•			•	•	•	2	5	5	AR							
Bowie	•				•	•	•	2	2	4	AR, W2							
Brazoria	•				•	•	•	2	2	4	AR, W2							
Brazos	•				•	•	•	2	2	4	AR, W2							
Brewster	•				•	•	•	2	4	4								
Briscoe	•	•			•	•	•	1	5	5		•	•	1			AR, M1	
Brooks		•		•	•	•	•	3	5	5	CWD							
Brown	•	•			•	•	•	2	5	5	AR, CWD							
Burleson	•				•	•	•	2	2	4	AR, W2							
Burnet	•	•			•	•	•	2	5	5								
Caldwell	•				•	•	•	2	2	4	AR, HR, W3							
Calhoun		•		•	•	•	•	3	5	5								
Callahan	•	•			•	•	•	2	5	5								
Cameron		•		•	•	•	•	3	5	5								

**AC** Means/methods restricted to lawful archery. No crossbows during archery season.  
**AR** Antler restrictions (pgs. 53-54).  
**CWD** CWD check stations (pgs. 49-52).  
**DL** Dogs must be on a leash.  
**FS** Restricted season dates for antlerless harvest on USFS lands (pg. 67)

**Antlerless** may be taken during archery, youth and muzzleloader seasons, except on properties where antlerless MLDP tags are issued or counties marked with **W1**.  
**HR** Mandatory harvest reporting (pg. 54).  
**W1** Antlerless by MLDP tag only, except during archery season.

**W2** Nov 2-Dec 1 antlerless may be taken.  
**W3** Nov 28-Dec 1 antlerless may be taken.  
**M1** Mule deer general season: antlerless by antlerless mule deer permit or MLDP tag.  
**M2** Mule deer archery season: antlerless may be taken.

Ⓐ=ARCHERY    Ⓨ=YOUTH ONLY (pg. 48 for youth-only bag limits and requirements)

County	Wild Turkey											Other Game									
	FALL					SPRING						BAG LIMIT & RESTRICT	SQUIRREL		JAVELINA	PHEASANT					
	Nov 2 - Jan 5	Nov 2 - Jan 19	Nov 2 - Feb 23	Ⓐ	Ⓨ	Mar 15 - Apr 27	Mar 29 - May 11	Apr 1 - Apr 30	Apr 22 - May 14	Mar 8-9/May 3-4	Mar 22-23/May 17-18	Annual Bag Limit	Restrictions & Regs	Sep 1 - Aug 31	Oct 1 - Feb 23, May 1-31	Sep 27 - Sep 29	Daily Bag Limit	Sep 1 - Aug 31	Oct 1 - Feb 23	Dec 7 - Jan 5	
Anderson																•	•	10			
Andrews																•	•	NB	•		
Angelina																•	•	10			
Aransas		GB		GB		GB				GB		4			•		NB	•			
Archer	ES			ES	ES				GB			GB	4			•		NB	•		
Armstrong	ES			ES	ES				GB			GB	4			•		NB			•
Atascosa		GB		GB		GB			GB			GB	4			•		NB	•		
Austin																•		NB			
Bailey																•		NB			•
Bandera	ES			ES	ES				GB			GB	4			•		NB	•		
Bastrop									G			1			•		NB				
Baylor	ES			ES	ES				GB			GB	4			•		NB			•
Bee		GB		GB		GB			GB			GB	4			•		NB	•		
Bell - E. of IH35																•		NB			
Bell - W. of IH35	ES			ES	ES				GB			GB	4			•		NB			
Bexar	ES			ES	ES				GB			GB	4			•		NB	•		
Blanco	ES			ES	ES				GB			GB	4			•		NB			•
Borden	ES			ES	ES				GB			GB	4			•		NB			•
Bosque	ES			ES	ES				GB			GB	4			•		NB			
Bowie - N. of US82												1				•	•	10			
Bowie - S. of US82																•	•	10			
Brazoria																•		NB			
Brazos																•		NB			
Brewster									G			1			•		NB	•			
Briscoe	ES			ES	ES				GB			GB	4			•		NB			•
Brooks			ES				ES	GB				GB	4			•		NB	•		
Brown	ES			ES	ES				GB			GB	4			•		NB			
Burleson																•		NB			
Burnet	ES			ES	ES				GB			GB	4			•		NB			
Caldwell									G			1			•		NB				•
Calhoun		GB		GB		GB			GB			GB	4			•		NB			•
Callahan	ES			ES	ES				GB			GB	4			•		NB			
Cameron		GB		GB		GB			GB			GB	4			•		NB	•		

**ES** Either sex  
**GB** Gobblers or bearded hens  
**G** Gobblers only  
**Wild turkey:** Mandatory harvest reporting in all open counties during all seasons.  
**Turkey bag limit:** Four, in the aggregate, no more than one of which may be from the East Zone.

**AN** Angelina National Forest closed to turkey hunting.  
**NB** No bag limit.  
**Javelina bag limit:** Two per license year. Waste of game provisions apply (pg. 19).



Ⓛ=LATE SEASON ⓐ=ARCHERY Ⓨ=YOUTH ONLY (pg. 48 for youth-only bag limits and requirements) Ⓜ=MUZZLELOADER

Harvest is restricted to antlerless deer and unbranched antlered bucks.

County	White-tailed Deer							Mule Deer									
	GENERAL	LATE	ARCHERY, YOUTH, MUZZLELOADER			BAG LIMITS & RESTRICTIONS			GENERAL & ARCHERY		BAG LIMITS & RESTRICTIONS						
	Nov 2 - Jan 5	Nov 2 - Jan 19	Jan 6 - Jan 19	Jan 20 - Feb 2	ⓐ Sep 28 - Nov 1	Ⓨ Oct 25-27/Jan 6-19	Ⓜ Jan 6 - Jan 19	Buck Limit	Antlerless Limit	Max Combined Limit	Restrictions & Regulations	Nov 23 - Dec 8	Nov 29 - Dec 15	ⓐ Sep 28 - Nov 1	Buck Limit	Max Combined Limit	Restrictions & Regulations
Camp	•				•	•	•	2	2	4	AR, W2						
Carson	•		•		•	•	•	1	5	5		•	•	1			M1
Cass	•				•	•	•	2	2	4	AR, W2						
Castro	•				•	•		1	2	3		•	•	1			AR, M1
Chambers	•				•	•	•	2	2	4	AR, W2						
Cherokee	•				•	•	•	2	2	4	AR, CWD, W2						
Childress	•	•			•	•		1	5	5		•	•	1			AR, M1
Clay	•	•			•	•		2	5	5	AR						
Cochran	•				•	•		1	2	3		•	•	1			AR, M1
Coke	•	•			•	•		2	5	5		•	•	1			M1
Coleman	•	•			•	•		2	5	5	CWD						
Collin	•				•	•		2	2	4	AC, AR, HR						
Collingsworth	•	•			•	•		1	5	5		•	•	1			AR, M1
Colorado	•				•	•	•	2	2	4	AR, HR, W3						
Comal - E. of IH35	•				•	•	•	2	2	4	AR, HR, W3						
Comal - W. of IH35	•	•			•	•		2	5	5							
Comanche	•	•			•	•		2	2	4	AR						
Concho	•	•			•	•		2	5	5							
Cooke	•	•			•	•		2	2	4	AR						
Coryell	•	•			•	•		2	5	5	AR						
Cottle	•	•			•	•		1	5	5		•	•	1			AR, M1
Crane	•				•	•		1	2	3	W1		•	•	1		M1
Crockett	•	•			•	•		2	5	5			•	•	1		M1
Crosby	•	•			•	•		1	5	5	CWD	•	•	1			CWD, M1
Culberson	•				•	•	•	2	4	4	CWD	•	•	1			CWD, M1
Dallam	•				•	•		1	2	3	CWD	•	•	1			CWD, M1
Dallas	•				•	•		2	2	4	AC, AR, HR						
Dawson	•				•	•		1	2	3		•	•	1			AR, M1
De Witt	•				•	•	•	2	2	4	AR, HR, W3						
Deaf Smith	•				•	•		1	2	3	CWD	•	•	1			CWD, M1
Delta	•				•	•	•	2	2	4	AR, W2						
Denton	•	•			•	•		2	2	4	AR						
Dickens	•	•			•	•		1	5	5		•	•	1			M1
Dimmit		•	•		•	•		3	5	5							
Donley	•		•		•	•		1	5	5		•	•	1			AR, M1

**AC** Means/methods restricted to lawful archery. No crossbows during archery season.

**AR** Antler restrictions (pgs. 53-54).

**CWD** CWD check stations (pgs. 49-52).

**DL** Dogs must be on a leash.

**FS** Restricted season dates for antlerless harvest on USFS lands (pg. 67)

**Antlerless** may be taken during archery, youth and muzzleloader seasons, except on properties where antlerless MLDP tags are issued or counties marked with **W1**.

**HR** Mandatory harvest reporting (pg. 54).

**W1** Antlerless by MLDP tag only, except during archery season.

**W2** Nov 2-Dec 1 antlerless may be taken.

**W3** Nov 28-Dec 1 antlerless may be taken.

**M1** Mule deer general season: antlerless by antlerless mule deer permit or MLDP tag.

**M2** Mule deer archery season: antlerless may be taken.

ⓐ=ARCHERY Ⓨ=YOUTH ONLY (pg. 48 for youth-only bag limits and requirements)

County	Wild Turkey											Other Game											
	FALL						SPRING					BAG LIMIT & RESTRICT	SQUIRREL		JAVELINA	PHEASANT							
	Nov 2 - Jan 5	Nov 2 - Jan 19	Nov 2 - Feb 23	ⓐ Sep 28 - Nov 1	Ⓨ Oct 25-27/Jan 6-19	Ⓨ Oct 25-27/Jan 20-Feb 2	Oct 25 - Oct 27	Mar 15 - Apr 27	Mar 29 - May 11	Apr 1 - Apr 30	Apr 22 - May 14	Ⓨ Mar 8-9/May 3-4	Mar 22-23/May 17-18	Annual Bag Limit	Restrictions & Regs	Sep 1 - Aug 31	Oct 1-Feb 23, May 1-31	Sep 27 - Sep 29	Daily Bag Limit	Sep 1 - Aug 31	Oct 1 - Feb 23	Dec 7 - Jan 5	
Camp																•	•	•	10				
Carson	ES			ES	ES			GB					GB	4		•	•	•	NB				•
Cass										G				1		•	•	•	10				
Castro															•	•	•	10					•
Chambers																•	•	•	10				
Cherokee																•	•	•	10				
Childress	ES			ES	ES			GB					GB	4		•	•	•	NB				•
Clay	ES			ES	ES			GB					GB	4		•	•	•	NB				
Cochran																•	•	•	NB				•
Coke	ES			ES	ES			GB					GB	4		•	•	•	NB				•
Coleman	ES			ES	ES			GB					GB	4		•	•	•	NB				
Collin																•	•	•	NB				
Collingsworth	ES			ES	ES			GB					GB	4		•	•	•	NB				•
Colorado										G				1		•	•	•	NB				
Comal - E. of IH35										G				1		•	•	•	NB				•
Comal - W. of IH35	ES			ES	ES			GB					GB	4		•	•	•	NB				•
Comanche	ES			ES	ES			GB					GB	4		•	•	•	NB				
Concho	ES			ES	ES			GB					GB	4		•	•	•	NB				•
Cooke	ES			ES	ES			GB					GB	4		•	•	•	NB				
Coryell	ES			ES	ES			GB					GB	4		•	•	•	NB				
Cottle	ES			ES	ES			GB					GB	4		•	•	•	NB				•
Crane	ES			ES	ES			GB					GB	4		•	•	•	NB				•
Crockett	ES			ES	ES			GB					GB	4		•	•	•	NB				•
Crosby	ES			ES	ES			GB					GB	4		•	•	•	NB				•
Culberson																•	•	•	NB				•
Dallam																•	•	•	NB				•
Dallas																•	•	•	NB				
Dawson	ES			ES	ES			GB					GB	4		•	•	•	NB				•
De Witt								GB					GB	4		•	•	•	NB				•
Deaf Smith																•	•	•	NB				•
Delta																•	•	•	10				
Denton	ES			ES	ES			GB					GB	4		•	•	•	NB				
Dickens	ES			ES	ES			GB					GB	4		•	•	•	NB				
Dimmit		GB		GB	GB			GB					GB	4		•	•	•	NB				•
Donley	ES			ES	ES			GB					GB	4		•	•	•	NB				•

**ES** Either sex  
**GB** Gobblers or bearded hens  
**G** Gobblers only

**Wild turkey:** Mandatory harvest reporting in all open counties during all seasons.

**Turkey bag limit:** Four, in the aggregate, no more than one of which may be from the East Zone.

**AN** Angelina National Forest closed to turkey hunting.  
**NB** No bag limit.

**Javelina bag limit:** Two per license year. Waste of game provisions apply (pg. 19).

Ⓛ=LATE SEASON Ⓐ=ARCHERY Ⓜ=MUZZLELOADER  
 Harvest is restricted to antlerless deer and unbranched antlered bucks.

County	White-tailed Deer								Mule Deer							
	GENERAL		LATE		ARCHERY, YOUTH, MUZZLELOADER		BAG LIMITS & RESTRICTIONS		GENERAL & ARCHERY		BAG LIMITS & RESTRICTIONS					
	Nov 2 - Jan 5	Nov 2 - Jan 19	Jan 6 - Jan 19	Jan 20 - Feb 2	Ⓐ Sep 28 - Nov 1	Ⓜ Oct 25-27/Jan 6-19	Ⓜ Jan 6 - Jan 19	Buck Limit	Antlerless Limit	Max Combined Limit	Restrictions & Regulations	Nov 23 - Dec 8	Nov 29 - Dec 15	Ⓐ Sep 28 - Nov 1	Buck Limit	Max Combined Limit
Duval	•	•	•	•	•	•	•	3	5	5	CWD					
Eastland	•	•	•	•	•	•	•	2	2	4	AR					
Ector	•	•	•	•	•	•	•	1	2	3	W1	•	•	1		M1
Edwards	•	•	•	•	•	•	•	2	5	5						
El Paso												•	•	1		CWD, M1
Ellis	•				•	•	•	2	2	4	AR, W2					
Erath	•	•			•	•	•	2	2	4	AR					
Falls	•				•	•	•	2	2	4	AR, W2					
Fannin	•				•	•	•	2	2	4	AR, FS, W2					
Fayette	•				•	•	•	2	2	4	AR, HR, W3					
Fisher	•	•			•	•	•	1	5	5		•	•	1		M1
Floyd	•	•			•	•	•	1	5	5		•	•	1		AR, M1
Foard	•	•			•	•	•	1	5	5		•	•	1		AR, M1
Fort Bend	•				•	•	•	2	2	4	AR, W2					
Franklin	•				•	•	•	2	2	4	AR, W2					
Freestone	•				•	•	•	2	2	4	AR, W2					
Frio		•	•		•	•	•	3	5	5	CWD					
Gaines	•				•	•	•	1	2	3		•	•	1		AR, M1
Galveston	•				•	•	•	2	2	4	AR, W2					
Garza	•	•			•	•	•	1	5	5	CWD	•	•	1		CWD, M1
Gillespie	•	•			•	•	•	2	5	5	CWD					
Glasscock	•	•			•	•	•	2	5	5						
Goliad - N. of Hwy 59	•				•	•	•	2	2	4	AR, HR, W3					
Goliad - S. of Hwy 59	•				•	•	•	2	2	4	AR, W2					
Gonzales	•				•	•	•	2	2	4	AR,CWD,HR,W3					
Gray	•	•			•	•	•	1	5	5		•	•	1		M1
Grayson	•				•	•	•	2	2	4	AC, AR, HR					
Gregg	•				•	•	•	2	2	4	AR, W2					
Grimes	•				•	•	•	2	2	4	AR, W2					
Guadalupe	•				•	•	•	2	2	4	AR, HR, W3					
Hale	•				•	•	•	1	2	3		•	•	1		AR, M1
Hall	•	•			•	•	•	1	5	5		•	•	1		AR, M1

**AC** Means/methods restricted to lawful archery. No crossbows during archery season.  
**AR** Antler restrictions (pgs. 53-54).  
**CWD** CWD check stations (pgs. 49-52).  
**DL** Dogs must be on a leash.  
**FS** Restricted season dates for antlerless harvest on USFS lands (pg. 67)

**Antlerless** may be taken during archery, youth and muzzleloader seasons, except on properties where antlerless MLDP tags are issued or counties marked with **W1**.  
**HR** Mandatory harvest reporting (pg. 54).  
**W1** Antlerless by MLDP tag only, except during archery season.

**W2** Nov 2-Dec 1 antlerless may be taken.  
**W3** Nov 28-Dec 1 antlerless may be taken.  
**M1** Mule deer general season: antlerless by antlerless mule deer permit or MLDP tag.  
**M2** Mule deer archery season: antlerless may be taken.

Ⓐ=ARCHERY Ⓜ=MUZZLELOADER  
 Harvest is restricted to antlerless deer and unbranched antlered bucks.

County	Wild Turkey												Other Game										
	FALL						SPRING						BAG LIMIT & RESTRICT		SQUIRREL		JAVELINA		PHEASANT				
	Nov 2 - Jan 5	Nov 2 - Jan 19	Nov 2 - Feb 23	Ⓐ Sep 28 - Nov 1	Ⓜ Oct 25-27/Jan 6-19	Ⓜ Oct 25-27/Jan 20-Feb 2	Oct 25 - Oct 27	Mar 15 - Apr 27	Mar 29 - May 11	Apr 1 - Apr 30	Apr 22 - May 14	Mar 8-9/May 3-4	Mar 22-23/May 17-18	Annual Bag Limit	Restrictions & Regs	Sep 1 - Aug 31	Oct 1-Feb 23, May 1-31	Sep 27 - Sep 29	Daily Bag Limit	Sep 1 - Aug 31	Oct 1 - Feb 23	Dec 7 - Jan 5	
Duval				GB											4		•		NB	•			
Eastland	ES			ES	ES				GB					GB	4	•			NB				
Ector	ES			ES	ES				GB					GB	4	•			NB		•		
Edwards	ES			ES	ES				GB					GB	4	•			NB		•		
El Paso																				NB		•	
Ellis-E. of IH35																				NB			
Ellis-W. of IH35									GB					GB	4	•			NB				
Erath	ES			ES	ES				GB					GB	4	•			NB				
Falls																				NB			
Fannin-N. of US82										G				1			•	•	10				
Fannin-S. of US82																	•	•	10				
Fayette									G					1		•			NB				
Fisher	ES			ES	ES				GB					GB	4	•			NB				
Floyd	ES			ES	ES				GB					GB	4	•			NB				•
Foard	ES			ES	ES				GB					GB	4	•			NB			•	
Fort Bend																				NB			
Franklin																					•	•	10
Freestone																					•	•	10
Frio			GB		GB		GB		GB					GB	4	•			NB		•		
Gaines																				NB			•
Galveston																					•	•	10
Garza	ES			ES	ES				GB					GB	4	•			NB				
Gillespie	ES			ES	ES				GB					GB	4	•			NB			•	
Glasscock	ES			ES	ES				GB					GB	4	•			NB			•	
Goliad			GB		GB		GB		GB					GB	4	•			NB			•	
Gonzales			GB		GB		GB		GB					GB	4	•			NB			•	
Gray	ES			ES	ES				GB					GB	4	•			NB			•	
Grayson										G				1		•			NB				
Gregg																					•	•	10
Grimes																					•		NB
Guadalupe-N. of IH10										G				1		•			NB			•	
Guadalupe-S. of IH10														GB	4	•			NB			•	
Hale																					•		NB
Hall	ES			ES	ES				GB					GB	4	•			NB			•	

**ES** Either sex  
**GB** Gobblers or bearded hens  
**G** Gobblers only

**Wild turkey:** Mandatory harvest reporting in all open counties during all seasons.  
**Turkey bag limit:** Four, in the aggregate, no more than one of which may be from the East Zone.

**AN** Angelina National Forest closed to turkey hunting.  
**NB** No bag limit.

**Javelina bag limit:** Two per license year. Waste of game provisions apply (pg. 19).

Ⓛ=LATE SEASON ⓐ=ARCHERY Ⓨ=YOUTH ONLY (pg. 48 for youth-only bag limits and requirements) Ⓜ=MUZZLELOADER

Harvest is restricted to antlerless deer and unbranched antlered bucks.

County	White-tailed Deer						Mule Deer										
	GENERAL		LATE		ARCHERY, YOUTH, MUZZLELOADER		BAG LIMITS & RESTRICTIONS			GENERAL & ARCHERY		BAG LIMITS & RESTRICTIONS					
	Nov 2 - Jan 5	Nov 2 - Jan 19	Jan 6 - Jan 19	Jan 20 - Feb 2	ⓐ Sep 28 - Nov 1	Ⓨ Oct 25-27/Jan 6-19	Ⓜ Jan 6 - Jan 19	Buck Limit	Antlerless Limit	Max Combined Limit	Restrictions & Regulations	Nov 23 - Dec 8	Nov 29 - Dec 15	ⓐ Sep 28 - Nov 1	Buck Limit	Max Combined Limit	Restrictions & Regulations
Hamilton	•	•			•	•		2	5	5	AR, CWD						
Hansford					•	•		1	2	3	CWD	•		•	1		CWD, M1
Hardeman	•	•			•	•		1	5	5		•		•	1		AR, M1
Hardin	•				•	•	•	2	2	4	AR, W2						
Harris	•				•	•	•	2	2	4	AR, W2						
Harrison	•				•	•	•	2	2	4	AR, W2						
Hartley	•				•	•		1	2	3	CWD	•		•	1		CWD, M1
Haskell	•	•			•	•		2	5	5							
Hays - E. of IH35	•				•	•	•	2	2	4	AR, HR, W3						
Hays - W. of IH35	•				•	•		2	5	5							
Hemphill	•	•			•	•		1	5	5		•		•	1		M1
Henderson	•				•	•	•	2	2	4	AR, W2						
Hidalgo		•	•		•	•		3	5	5							
Hill	•		•		•	•		2	5	5	AR						
Hockley	•				•	•		1	2	3		•		•	1		AR, M1
Hood	•	•			•	•		2	2	4	AR						
Hopkins	•				•	•	•	2	2	4	AR, W2						
Houston	•				•	•	•	2	2	4	AR, FS, W2						
Howard	•	•			•	•		2	5	5							
Hudspeth												•		•	1		CWD, M1
Hunt	•				•	•	•	2	2	4	AR, CWD, W2						
Hutchinson	•	•			•	•		1	5	5	CWD	•		•	1		CWD, M1
Irion	•	•			•	•		2	5	5							
Jack	•	•			•	•		2	5	5	AR						
Jackson-N. of Hwy 59	•				•	•	•	2	2	4	AR, HR, W3						
Jackson-S. of Hwy 59	•				•	•	•	2	2	4	AR, W2						
Jasper	•				•	•	•	2	2	4	AR,DL,FS,W2						
Jeff Davis	•				•	•	•	2	4	4		•		•	1		M1
Jefferson	•				•	•	•	2	2	4	AR, W2						
Jim Hogg		•	•		•	•	•	3	5	5							
Jim Wells		•	•		•	•	•	3	5	5	CWD						
Johnson	•	•			•	•		2	2	4	AR						
Jones	•	•			•	•		2	5	5							
Karnes	•				•	•	•	2	2	4	AR, HR, W3						

**AC** Means/methods restricted to lawful archery. No crossbows during archery season.

**AR** Antler restrictions (pgs. 53-54).

**CWD** CWD check stations (pgs. 49-52).

**DL** Dogs must be on a leash.

**FS** Restricted season dates for antlerless harvest on USFS lands (pg. 67)

**Antlerless** may be taken during archery, youth and muzzleloader seasons, except on properties where antlerless MLDP tags are issued or counties marked with **W1**.

**HR** Mandatory harvest reporting (pg. 54).

**W1** Antlerless by MLDP tag only, except during archery season.

**W2** Nov 2-Dec 1 antlerless may be taken.

**W3** Nov 28-Dec 1 antlerless may be taken.

**M1** Mule deer general season: antlerless by antlerless mule deer permit or MLDP tag.

**M2** Mule deer archery season: antlerless may be taken.

ⓐ=ARCHERY Ⓨ=YOUTH ONLY (pg. 48 for youth-only bag limits and requirements)

County	Wild Turkey												Other Game										
	FALL						SPRING						BAG LIMIT & RESTRICT	SQUIRREL		JAVELINA	PHEASANT						
	Nov 2 - Jan 5	Nov 2 - Jan 19	Nov 2 - Feb 23	ⓐ Sep 28 - Nov 1	Ⓨ Oct 25-27/Jan 6-19	Ⓨ Oct 25-27/Jan 20-Feb 2	Oct 25 - Oct 27	Mar 15 - Apr 27	Mar 29 - May 11	Apr 1 - Apr 30	Apr 22 - May 14	Mar 8-9/May 3-4	Mar 22-23/May 17-18	Annual Bag Limit	Restrictions & Regs	Sep 1 - Aug 31	Oct 1-Feb 23, May 1-31	Sep 27 - Sep 29	Daily Bag Limit	Sep 1 - Aug 31	Oct 1 - Feb 23	Dec 7 - Jan 5	
Hamilton	ES			ES	ES			GB					GB	4		•			NB				•
Hansford																•			NB				•
Hardeman	ES			ES	ES			GB					GB	4		•			NB			•	
Hardin																•	•		10				
Harris																•	•		10				
Harrison																•	•		10				
Hartley	ES			ES	ES			GB					GB	4		•			NB				•
Haskell	ES			ES	ES			GB					GB	4		•			NB				
Hays - E. of IH35									G					1		•			NB			•	
Hays - W. of IH35	ES			ES	ES			GB					GB	4		•			NB			•	
Hemphill	ES			ES	ES			GB					GB	4					NB				•
Henderson																•	•		10				
Hidalgo		GB		GB	GB			GB					GB	4		•			NB		•		
Hill - E. of IH35									G					1		•			NB				
Hill - W. of IH35	ES			ES	ES			GB					GB	4		•			NB				
Hockley																•			NB				•
Hood	ES			ES	ES			GB					GB	4		•			NB				
Hopkins																•	•		10				
Houston																•	•		10				
Howard	ES			ES	ES			GB					GB	4		•			NB			•	
Hudspeth																•			NB		•		
Hunt																•	•		10				
Hutchinson	ES			ES	ES			GB					GB	4		•			NB			•	
Irion	ES			ES	ES			GB					GB	4		•			NB			•	
Jack	ES			ES	ES			GB					GB	4		•			NB				
Jackson									G					1		•			NB				
Jasper										G				1	AN	•	•		10				
Jeff Davis									G					1		•			NB		•		
Jefferson																•	•		10				
Jim Hogg		GB		GB	GB			GB					GB	4		•			NB		•		
Jim Wells		GB		GB	GB			GB					GB	4		•			NB		•		
Johnson	ES			ES	ES			GB					GB	4		•			NB				
Jones	ES			ES	ES			GB					GB	4		•			NB				
Karnes		GB		GB	GB			GB					GB	4		•			NB		•		

**ES** Either sex  
**G** Gobblers or bearded hens  
**GB** Gobblers only

**Wild turkey:** Mandatory harvest reporting in all open counties during all seasons.

**Turkey bag limit:** Four, in the aggregate, no more than one of which may be from the East Zone.

**AN** Angelina National Forest closed to turkey hunting.  
**NB** No bag limit.

**Javelina bag limit:** Two per license year. Waste of game provisions apply (pg. 19).

Ⓛ=LATE SEASON ⓐ=ARCHERY Ⓨ=YOUTH ONLY (pg. 48 for youth-only bag limits and requirements) Ⓜ=MUZZLELOADER

Harvest is restricted to antlerless deer and unbranched antlered bucks.

County	White-tailed Deer						Mule Deer									
	GENERAL		LATE		ARCHERY, YOUTH, MUZZLELOADER		BAG LIMITS & RESTRICTIONS			GENERAL & ARCHERY		BAG LIMITS & RESTRICTIONS				
	Nov 2 - Jan 5	Nov 2 - Jan 19	Jan 6 - Jan 19	Jan 20 - Feb 2	ⓐ Sep 28 - Nov 1	Ⓨ Oct 25-27/Jan 6-19	Ⓜ Jan 6 - Jan 19	Buck Limit	Antlerless Limit	Max Combined Limit	Restrictions & Regulations	Nov 23 - Dec 8	Nov 29 - Dec 15	ⓐ Sep 28 - Nov 1	Buck Limit	Max Combined Limit
Kaufman	•				•	•	•	2	2	4	AR, CWD, W2					
Kendall	•		•		•	•	•	2	5	5						
Kenedy		•	•		•	•	•	3	5	5						
Kent	•		•		•	•	•	1	5	5		•	•	1		M1
Kerr	•	•	•		•	•	•	2	5	5						
Kimble	•	•	•		•	•	•	2	5	5	CWD					
King	•	•	•		•	•	•	1	5	5		•	•	1		M1
Kinney - N. of US90	•	•	•		•	•	•	2	5	5						
Kinney - S. of US90		•	•		•	•	•	3	5	5						
Kleberg		•	•		•	•	•	3	5	5						
Knox	•	•	•		•	•	•	2	5	5		•	•	1		M1
La Salle		•	•		•	•	•	3	5	5						
Lamar	•				•	•	•	2	2	4	AR, W2					
Lamb	•				•	•	•	1	2	3		•	•	1		AR, M1
Lampasas	•	•			•	•	•	2	5	5	AR					
Lavaca	•				•	•	•	2	2	4	AR, HR, W3					
Lee	•				•	•	•	2	2	4	AR, HR, W3					
Leon	•				•	•	•	2	2	4	AR, W2					
Liberty	•				•	•	•	2	2	4	AR, W2					
Limestone	•				•	•	•	2	2	4	AR, CWD, W2					
Lipscomb	•	•			•	•	•	1	5	5		•	•	1		M1
Live Oak		•	•		•	•	•	3	5	5						
Llano	•	•			•	•	•	2	5	5						
Loving	•				•	•	•	1	2	3	W1	•	•	1		M1
Lubbock	•				•	•	•	1	2	3	CWD	•	•	1		AR,CWD,M1
Lynn	•				•	•	•	1	2	3	CWD	•	•	1		AR,CWD,M1
Madison	•				•	•	•	2	2	4	AR, W2					
Marion	•				•	•	•	2	2	4	AR, W2					
Martin	•				•	•	•	1	2	3		•	•	1		AR, M1
Mason	•	•			•	•	•	2	5	5						
Matagorda	•				•	•	•	2	2	4	AR, W2					
Maverick		•	•		•	•	•	3	5	5						
McCulloch	•	•			•	•	•	2	5	5						

**AC** Means/methods restricted to lawful archery. No crossbows during archery season.

**AR** Antler restrictions (pgs. 53-54).

**CWD** CWD check stations (pgs. 49-52).

**DL** Dogs must be on a leash.

**FS** Restricted season dates for antlerless harvest on USFS lands (pg. 67)

**Antlerless** may be taken during archery, youth and muzzleloader seasons, except on properties where antlerless MLDP tags are issued or counties marked with **W1**.

**HR** Mandatory harvest reporting (pg. 54).

**W1** Antlerless by MLDP tag only, except during archery season.

**W2** Nov 2-Dec 1 antlerless may be taken.

**W3** Nov 28-Dec 1 antlerless may be taken.

**M1** Mule deer general season: antlerless by antlerless mule deer permit or MLDP tag.

**M2** Mule deer archery season: antlerless may be taken.

ⓐ=ARCHERY Ⓨ=YOUTH ONLY (pg. 48 for youth-only bag limits and requirements)

County	Wild Turkey												Other Game										
	FALL						SPRING						BAG LIMIT & RESTRICT		SQUIRREL		JAVELINA		PHEASANT				
	Nov 2 - Jan 5	Nov 2 - Jan 19	Nov 2 - Feb 23	ⓐ Sep 28 - Nov 1	Ⓨ Oct 25-27/Jan 6-19	Ⓨ Oct 25-27/Jan 20-Feb 2	Oct 25 - Oct 27	Mar 15 - Apr 27	Mar 29 - May 11	Apr 1 - Apr 30	Apr 22 - May 14	Ⓨ Mar 8-9/May 3-4	Mar 22-23/May 17-18	Annual Bag Limit	Restrictions & Regs	Sep 1 - Aug 31	Oct 1-Feb 23, May 1-31	Ⓨ Sep 27 - Sep 29	Daily Bag Limit	Sep 1 - Aug 31	Oct 1 - Feb 23	Dec 7 - Jan 5	
Kaufman															•				NB				
Kendall	ES			ES	ES			GB					GB	4	•				NB	•			
Kenedy			ES	ES			ES	GB					GB	4	•				NB	•			
Kent	ES			ES	ES			GB					GB	4	•				NB				
Kerr	ES			ES	ES			GB					GB	4	•				NB	•			
Kimble	ES			ES	ES			GB					GB	4	•				NB	•			
King	ES			ES	ES			GB					GB	4	•				NB				
Kinney-N. of US90	ES			ES	ES			GB					GB	4	•				NB	•			
Kinney-S. of US90		GB		GB		GB		GB					GB	4	•				NB	•			
Kleberg			ES	ES			ES	GB					GB	4	•				NB	•			
Knox	ES			ES	ES			GB					GB	4	•				NB		•		
La Salle		GB		GB		GB		GB					GB	4	•				NB	•			
Lamar - N. of US82											G		1		•	•			10				
Lamar - S. of US82															•	•			10				
Lamb															•				NB				•
Lampasas	ES			ES	ES			GB					GB	4	•				NB				
Lavaca										G			1	•					NB				
Lee										G			1	•					NB				
Leon															•	•			10				
Liberty															•	•			10				
Limestone															•	•			10				
Lipscomb	ES			ES	ES			GB					GB	4	•				NB				•
Live Oak		GB		GB		GB		GB					GB	4	•				NB	•			
Llano	ES			ES	ES			GB					GB	4	•				NB		•		
Loving															•				NB		•		
Lubbock															•				NB				•
Lynn	ES			ES	ES			GB					GB	4	•				NB				
Madison															•				NB				
Marion										G			1	•	•	•			10				
Martin	ES			ES	ES			GB					GB	4	•				NB		•		
Mason	ES			ES	ES			GB					GB	4	•				NB		•		
Matagorda										G			1	•					NB				
Maverick		GB		GB		GB		GB					GB	4	•				NB	•			
McCulloch	ES			ES	ES			GB					GB	4	•				NB		•		

**ES** Either sex

**GB** Gobblers or bearded hens

**G** Gobblers only

**Wild turkey:** Mandatory harvest reporting in all open counties during all seasons.

**Turkey bag limit:** Four, in the aggregate, no more than one of which may be from the East Zone.

**AN** Angelina National Forest closed to turkey hunting.

**NB** No bag limit.

**Javelina bag limit:** Two per license year. Waste of game provisions apply (pg. 19).

Ⓛ=LATE SEASON Ⓐ=ARCHERY Ⓢ=YOUTH ONLY (pg. 48 for youth-only bag limits and requirements) Ⓜ=MUZZLELOADER

Harvest is restricted to antlerless deer and unbranched antlered bucks.

County	White-tailed Deer								Mule Deer								
	GENERAL		LATE		ARCHERY, YOUTH, MUZZLELOADER		BAG LIMITS & RESTRICTIONS		GENERAL & ARCHERY		BAG LIMITS & RESTRICTIONS						
	Nov 2 - Jan 5	Nov 2 - Jan 19	Jan 6 - Jan 19	Jan 20 - Feb 2	Ⓐ Sep 28 - Nov 1	Ⓢ Oct 25-27/Jan 6-19	Ⓜ Jan 6 - Jan 19	Buck Limit	Antlerless Limit	Max Combined Limit	Restrictions & Regulations	Nov 23 - Dec 8	Nov 29 - Dec 15	Ⓐ Sep 28 - Nov 1	Buck Limit	Max Combined Limit	Restrictions & Regulations
McLennan	•		•		•	•		2	5	5	AR						
McMullen		•		•	•	•		3	5	5							
Medina - N. of US90	•		•		•	•		2	5	5	CWD						
Medina - S. of US90		•		•	•	•		3	5	5	CWD						
Menard	•		•		•	•		2	5	5							
Midland	•				•	•		1	2	3	W1	•	•	1			M1
Milam	•				•	•	•	2	2	4	AR, W2						
Mills	•		•		•	•		2	5	5	AR, CWD						
Mitchell	•		•		•	•		2	5	5							
Montague	•		•		•	•		2	2	4	AR, FS						
Montgomery	•				•	•	•	2	2	4	AR, FS, W2						
Moore	•				•	•		1	2	3	CWD	•	•	1			CWD, M1
Morris	•				•	•	•	2	2	4	AR, W2						
Motley	•		•		•	•		1	5	5		•	•	1			AR, M1
Nacogdoches	•				•	•	•	2	2	4	AR, FS, W2						
Navarro	•				•	•	•	2	2	4	AR, W2						
Newton	•				•	•	•	2	2	4	AR,DL,FS,W2						
Nolan	•		•		•	•		2	5	5							
Nueces		•		•	•	•		3	5	5							
Ochiltree	•		•		•	•		1	5	5		•	•	1			M1
Oldham	•				•	•		1	2	3	CWD	•	•	1			CWD, M1
Orange	•				•	•	•	2	2	4	AR, W2						
Palo Pinto	•		•		•	•		2	5	5	AR						
Panola	•				•	•	•	2	2	4	AR, W2						
Parker	•		•		•	•		2	2	4	AR						
Parker	•				•	•		1	2	3	CWD	•	•	1			AR,CWD,M1
Pecos	•		•		•	•		2	5	5		•	•	1	2		M2
Polk	•				•	•	•	2	2	4	AR, W2						
Potter	•				•	•		1	2	3	CWD	•	•	1			CWD, M1
Presidio	•				•	•	•	2	4	4		•	•	1			M1
Rains	•				•	•	•	2	2	4	AR, W2						
Randall	•				•	•		1	2	3	CWD	•	•	1			AR,CWD,M1
Reagan	•		•		•	•		2	5	5		•	•	1			M1
Real	•		•		•	•		2	5	5	CWD						

**AC** Means/methods restricted to lawful archery. No crossbows during archery season.

**AR** Antler restrictions (pgs. 53-54).

**CWD** CWD check stations (pgs. 49-52).

**DL** Dogs must be on a leash.

**FS** Restricted season dates for antlerless harvest on USFS lands (pg. 67)

**Antlerless** may be taken during archery, youth and muzzleloader seasons, except on properties where antlerless MLDP tags are issued or counties marked with **W1**.

**HR** Mandatory harvest reporting (pg. 54).

**W1** Antlerless by MLDP tag only, except during archery season.

**W2** Nov 2-Dec 1 antlerless may be taken.

**W3** Nov 28-Dec 1 antlerless may be taken.

**M1** Mule deer general season: antlerless by antlerless mule deer permit or MLDP tag.

**M2** Mule deer archery season: antlerless may be taken.

Ⓐ=ARCHERY Ⓢ=YOUTH ONLY (pg. 48 for youth-only bag limits and requirements)

County	Wild Turkey												Other Game											
	FALL						SPRING						BAG LIMIT & RESTRICT	SQUIRREL		JAVELINA	PHEASANT							
	Nov 2 - Jan 5	Nov 2 - Jan 19	Nov 2 - Feb 23	Ⓐ Sep 28 - Nov 1	Ⓢ Oct 25-27/Jan 6-19	Ⓢ Oct 25-27/Jan 20-Feb 2	Oct 25 - Oct 27	Mar 15 - Apr 27	Mar 29 - May 11	Apr 1 - Apr 30	Apr 22 - May 14	Mar 8-9/May 3-4	Mar 22-23/May 17-18	Annual Bag Limit	Restrictions & Regs	Sep 1 - Aug 31	Oct 1-Feb 23, May 1-31	Sep 27 - Sep 29	Daily Bag Limit	Sep 1 - Aug 31	Oct 1 - Feb 23	Dec 7 - Jan 5		
McLennan-E. of IH35													1		•									
McLennan-W. of IH35	ES			ES	ES			GB					GB	4		•								
McMullen		GB		GB	GB			GB					GB	4		•						•		
Medina-N. of US90	ES			ES	ES			GB					GB	4		•						•		
Medina-S. of US90		GB		GB	GB			GB					GB	4		•						•		
Menard	ES			ES	ES			GB					GB	4		•						•		
Midland	ES			ES	ES			GB					GB	4		•						•		
Milam																•								
Mills	ES			ES	ES			GB					GB	4		•								
Mitchell	ES			ES	ES			GB					GB	4		•						•		
Montague	ES			ES	ES			GB					GB	4		•								
Montgomery																•	•							
Moore	ES			ES	ES			GB					GB	4		•								•
Morris																•	•							
Motley	ES			ES	ES			GB					GB	4		•								•
Nacogdoches										G			1			•	•							
Navarro																•	•							
Newton										G			1			•	•							
Nolan	ES			ES	ES			GB					GB	4		•						•		
Nueces		GB		GB	GB			GB					GB	4		•						•		
Ochiltree	ES			ES	ES			GB					GB	4		•								•
Oldham	ES			ES	ES			GB					GB	4		•								•
Orange																•	•							
Palo Pinto	ES			ES	ES			GB					GB	4		•								
Panola																•	•							
Parker	ES			ES	ES			GB					GB	4		•								
Parker																•								•
Pecos										G			1			•						•		
Polk													1			•	•							
Potter	ES			ES	ES			GB					GB	4		•								•
Presidio																•	•							
Rains																•	•							
Randall	ES			ES	ES			GB					GB	4		•								•
Reagan	ES			ES	ES			GB					GB	4		•								•
Real	ES			ES	ES			GB					GB	4		•								•

**ES** Either sex  
**GB** Gobblers or bearded hens  
**G** Gobblers only

**Wild turkey:** Mandatory harvest reporting in all open counties during all seasons.  
**Turkey bag limit:** Four, in the aggregate, no more than one of which may be from the East Zone.

**AN** Angelina National Forest closed to turkey hunting.  
**NB** No bag limit.

**Javelina bag limit:** Two per license year. Waste of game provisions apply (pg. 19).

Ⓛ=LATE SEASON ⓐ=ARCHERY Ⓨ=YOUTH ONLY (pg. 48 for youth-only bag limits and requirements) Ⓜ=MUZZLELOADER

Harvest is restricted to antlerless deer and unbranched antlered bucks.

County	White-tailed Deer								Mule Deer								
	GENERAL		LATE		ARCHERY, YOUTH, MUZZLELOADER		BAG LIMITS & RESTRICTIONS		GENERAL & ARCHERY		BAG LIMITS & RESTRICTIONS						
	Nov 2 - Jan 5	Nov 2 - Jan 19	Jan 6 - Jan 19	Jan 20 - Feb 2	ⓐ Sep 28 - Nov 1	Ⓨ Oct 25-27/Jan 6-19	Ⓜ Jan 6 - Jan 19	Buck Limit	Antlerless Limit	Max Combined Limit	Restrictions & Regulations	Nov 23 - Dec 8	Nov 29 - Dec 15	ⓐ Sep 28 - Nov 1	Buck Limit	Max Combined Limit	Restrictions & Regulations
Red River	•				•	•	•	2	2	4	AR, W2						
Reeves	•				•	•	•	2	4	4	CWD	•	•	1			CWD, M1
Refugio		•		•	•	•		3	5	5							
Roberts	•	•			•	•		1	5	5		•	•	1			M1
Robertson	•				•	•	•	2	2	4	AR, W2						
Rockwall	•				•	•		2	2	4	AC,AR,CWD,HR						
Runnels	•	•			•	•		2	5	5							
Rusk	•				•	•	•	2	2	4	AR, W2						
Sabine	•				•	•	•	2	2	4	AR,DL,FS,W2						
San Augustine	•				•	•	•	2	2	4	AR,DL,FS,W2						
San Jacinto	•				•	•	•	2	2	4	AR, FS, W2						
San Patricio		•		•	•	•		3	5	5							
San Saba	•	•			•	•		2	5	5							
Schleicher	•	•			•	•		2	5	5							
Scurry	•	•			•	•		1	5	5		•	•	1			M1
Shackelford	•	•			•	•		2	5	5							
Shelby	•				•	•	•	2	2	4	AR, FS, W2						
Sherman	•				•	•		1	2	3	CWD	•	•	1			CWD, M1
Smith	•				•	•	•	2	2	4	AR, W2						
Somervell	•	•			•	•		2	5	5	AR						
Starr		•		•	•	•		3	5	5							
Stephens	•	•			•	•		2	5	5	AR						
Sterling	•	•			•	•		2	5	5							
Stonewall	•	•			•	•		1	5	5		•	•	1			M1
Sutton	•	•			•	•		2	5	5	CWD						
Swisher	•				•	•		1	2	3		•	•	1			AR, M1
Tarrant	•	•			•	•		2	2	4	AR						
Taylor	•	•			•	•		2	5	5							
Terrell	•	•			•	•		2	5	5		•	•	1	2		AR, M2
Terry	•				•	•		1	2	3		•	•	1			AR, M1
Throckmorton	•	•			•	•		2	5	5							
Titus	•				•	•	•	2	2	4	AR, W2						
Tom Green	•	•			•	•		2	5	5							

**AC** Means/methods restricted to lawful archery. No crossbows during archery season.

**AR** Antler restrictions (pgs. 53-54).

**CWD** CWD check stations (pgs. 49-52).

**DL** Dogs must be on a leash.

**FS** Restricted season dates for antlerless harvest on USFS lands (pg. 67)

**Antlerless** may be taken during archery, youth and muzzleloader seasons, except on properties where antlerless MLDP tags are issued or counties marked with **W1**.

**HR** Mandatory harvest reporting (pg. 54).

**W1** Antlerless by MLDP tag only, except during archery season.

**W2** Nov 2-Dec 1 antlerless may be taken.

**W3** Nov 28-Dec 1 antlerless may be taken.

**M1** Mule deer general season: antlerless by antlerless mule deer permit or MLDP tag.

**M2** Mule deer archery season: antlerless may be taken.

ⓐ=ARCHERY Ⓨ=YOUTH ONLY (pg. 48 for youth-only bag limits and requirements)

County	Wild Turkey											Other Game											
	FALL					SPRING						BAG LIMIT & RESTRICT	SQUIRREL		JAVELINA	PHEASANT							
	Nov 2 - Jan 5	Nov 2 - Jan 19	Nov 2 - Feb 23	ⓐ Sep 28 - Nov 1	Ⓨ Oct 25-27/Jan 6-19	Ⓨ Oct 25-27/Jan 20-Feb 2	Oct 25 - Oct 27	Mar 15 - Apr 27	Mar 29 - May 11	Apr 1 - Apr 30	Apr 22 - May 14	Mar 8-9/May 3-4	Mar 22-23/May 17-18	Annual Bag Limit	Restrictions & Regs	Sep 1 - Aug 31	Oct 1-Feb 23, May 1-31	Sep 27 - Sep 29	Daily Bag Limit	Sep 1 - Aug 31	Oct 1 - Feb 23	Dec 7 - Jan 5	
Red River-N. of US82													1		•	•	10						
Red River-S. of US82															•	•	10						
Reeves															•		NB	•					
Refugio		GB		GB	GB		GB				GB		4	•		NB					•		
Roberts	ES			ES	ES			GB				GB	4	•		NB							•
Robertson															•	•	10						
Rockwall															•		NB						
Runnels	ES			ES	ES			GB				GB	4	•		NB					•		
Rusk															•	•	10						
Sabine										G			1		•	•	10						
San Augustine															•	•	10						
San Jacinto															•	•	10						
San Patricio		GB		GB	GB		GB				GB		4	•		NB	•						
San Saba	ES			ES	ES			GB				GB	4	•		NB					•		
Schleicher	ES			ES	ES			GB				GB	4	•		NB					•		
Scurry	ES			ES	ES			GB				GB	4	•		NB					•		
Shackelford	ES			ES	ES			GB				GB	4	•		NB							
Shelby															•	•	10						
Sherman															•		NB						•
Smith															•	•	10						
Somervell	ES			ES	ES			GB				GB	4	•		NB							
Starr		GB		GB	GB		GB				GB		4	•		NB	•						
Stephens	ES			ES	ES			GB				GB	4	•		NB							
Sterling	ES			ES	ES			GB				GB	4	•		NB					•		
Stonewall	ES			ES	ES			GB				GB	4	•		NB							
Sutton	ES			ES	ES			GB				GB	4	•		NB	•						
Swisher	ES			ES	ES			GB				GB	4	•		NB							•
Tarrant	ES			ES	ES			GB				GB	4	•		NB							
Taylor	ES			ES	ES			GB				GB	4	•		NB					•		
Terrell										G			1	•		NB	•						
Terry															•		NB						•
Throckmorton	ES			ES	ES			GB				GB	4	•		NB							
Titus															•	•	10						
Tom Green	ES			ES	ES			GB				GB	4	•		NB					•		

**ES** Either sex

**GB** Gobblers or bearded hens

**G** Gobblers only

**Wild turkey:** Mandatory harvest reporting in all open counties during all seasons.

**Turkey bag limit:** Four, in the aggregate, no more than one of which may be from the East Zone.

**AN** Angelina National Forest closed to turkey hunting.

**NB** No bag limit.

**Javelina bag limit:** Two per license year. Waste of game provisions apply (pg. 19).

Ⓛ=LATE SEASON ⓐ=ARCHERY Ⓨ=YOUTH ONLY (pg. 48 for youth-only bag limits and requirements) Ⓜ=MUZZLELOADER

Harvest is restricted to antlerless deer and unbranched antlered bucks.

County	White-tailed Deer						Mule Deer										
	GENERAL		LATE		ARCHERY, YOUTH, MUZZLELOADER		BAG LIMITS & RESTRICTIONS			GENERAL & ARCHERY		BAG LIMITS & RESTRICTIONS					
	Nov 2 - Jan 5	Nov 2 - Jan 19	Jan 6 - Jan 19	Jan 20 - Feb 2	ⓐ Sep 28 - Nov 1	Ⓨ Oct 25-27/Jan 6-19	Ⓜ Jan 6 - Jan 19	Buck Limit	Antlerless Limit	Max Combined Limit	Restrictions & Regulations	Nov 23 - Dec 8	Nov 29 - Dec 15	ⓐ Sep 28 - Nov 1	Buck Limit	Max Combined Limit	Restrictions & Regulations
Travis - E. of IH35	•				•	•	•	2	2	4	AR, HR, W3						
Travis - W. of IH35	•		•		•	•	•	2	5	5							
Trinity	•				•	•	•	2	2	4	AR, FS, W2						
Tyler	•				•	•	•	2	2	4	AR, W2						
Upshur	•				•	•	•	2	2	4	AR, W2						
Upton	•		•		•	•	•	2	5	5		•	•	1		M1	
Uvalde - N. of US90	•		•		•	•	•	2	5	5	CWD						
Uvalde - S. of US90		•		•	•	•	•	3	5	5							
Val Verde-N. of 239/90	•		•		•	•	•	2	5	5	CWD	•	•	1		CWD, M1	
Val Verde-S. of 239/90	•		•		•	•	•	3	5	5	CWD	•	•	1		CWD, M1	
Van Zandt	•				•	•	•	2	2	4	AR, CWD, W2						
Victoria - N. of Hwy 59	•				•	•	•	2	2	4	AR, HR, W3						
Victoria - S. of Hwy 59	•				•	•	•	2	2	4	AR, W2						
Walker	•				•	•	•	2	2	4	AR, FS, W2						
Waller	•				•	•	•	2	2	4	AR, HR, W3						
Ward	•				•	•	•	1	2	3	W1	•	•	1		M1	
Washington	•				•	•	•	2	2	4	AR,CWD,HR,W3						
Webb		•		•	•	•	•	3	5	5							
Wharton-N. of Hwy 59	•				•	•	•	2	2	4	AR, HR, W3						
Wharton-S. of Hwy 59	•				•	•	•	2	2	4	AR, W2						
Wheeler	•		•		•	•	•	1	5	5		•	•	1		M1	
Wichita	•		•		•	•	•	2	5	5	AR						
Wilbarger	•		•		•	•	•	2	5	5							
Willacy		•		•	•	•	•	3	5	5							
Williamson-E. of IH35	•				•	•	•	2	2	4	AR, W2						
Williamson-W. of IH35	•		•		•	•	•	2	5	5	AR						
Wilson	•				•	•	•	2	2	4	AR, HR, W3						
Winkler	•				•	•	•	1	2	3	W1	•	•	1		M1	
Wise	•		•		•	•	•	2	2	4	AR, FS						
Wood	•				•	•	•	2	2	4	AR, W2						
Yoakum	•				•	•	•	1	2	3		•	•	1		AR, M1	
Young	•		•		•	•	•	2	5	5	AR						
Zapata		•		•	•	•	•	3	5	5							
Zavala		•		•	•	•	•	3	5	5	CWD						

**AC** Means/methods restricted to lawful archery. No crossbows during archery season.

**AR** Antler restrictions (pgs. 53-54).

**CWD** CWD check stations (pgs. 49-52).

**DL** Dogs must be on a leash.

**FS** Restricted season dates for antlerless harvest on USFS lands (pg. 67)

**Antlerless** may be taken during archery, youth and muzzleloader seasons, except on properties where antlerless MLDP tags are issued or counties marked with **W1**.

**HR** Mandatory harvest reporting (pg. 54).

**W1** Antlerless by MLDP tag only, except during archery season.

**W2** Nov 2-Dec 1 antlerless may be taken.

**W3** Nov 28-Dec 1 antlerless may be taken.

**M1** Mule deer general season: antlerless by antlerless mule deer permit or MLDP tag.

**M2** Mule deer archery season: antlerless may be taken.

ⓐ=ARCHERY Ⓨ=YOUTH ONLY (pg. 48 for youth-only bag limits and requirements)

County	Wild Turkey												Other Game										
	FALL						SPRING						BAG LIMIT & RESTRICT		SQUIRREL		JAVELINA		PHEASANT				
	Nov 2 - Jan 5	Nov 2 - Jan 19	Nov 2 - Feb 23	ⓐ Sep 28 - Nov 1	Ⓨ Oct 25-27/Jan 6-19	Ⓨ Oct 25-27/Jan 20-Feb 2	Oct 25 - Oct 27	Mar 15 - Apr 27	Mar 29 - May 11	Apr 1 - Apr 30	Apr 22 - May 14	Mar 8-9/May 3-4	Mar 22-23/May 17-18	Annual Bag Limit	Restrictions & Regs	Sep 1 - Aug 31	Oct 1-Feb 23, May 1-31	Sep 27 - Sep 29		Daily Bag Limit	Sep 1 - Aug 31	Oct 1 - Feb 23	
Travis - E. of IH35															1		•		NB				
Travis - W. of IH35	ES									GB				GB	4		•		NB				
Trinity																	•	•	10				
Tyler																	•	•	10				
Upshur																	•	•	10				
Upton	ES				ES	ES				GB				GB	4		•		NB		•		
Uvalde-N. of US90	ES				ES	ES				GB				GB	4		•		NB		•		
Uvalde-S. of US90		GB			GB	GB		GB				GB		GB	4		•		NB		•		
Val Verde - N.	ES				ES	ES				GB				GB	4		•		NB		•		
Val Verde - S.		GB			GB	GB		GB				GB		GB	4		•		NB		•		
Van Zandt																	•	•	10				
Victoria										GB				GB	4		•		NB		•		
Walker																	•	•	10				
Waller																	•		NB				
Ward	ES				ES	ES				GB				GB	4		•		NB		•		
Washington																	•		NB				
Webb		GB			GB	GB		GB						GB	4		•		NB		•		
Wharton															1		•		NB				
Wheeler	ES				ES	ES				GB				GB	4		•		NB			•	
Wichita	ES				ES	ES				GB				GB	4		•		NB		•		
Wilbarger	ES				ES	ES				GB				GB	4		•		NB		•	•	
Willacy			ES		ES			ES	GB					GB	4		•		NB		•		
Williamson - E.																	•		NB				
Williamson - W.	ES				ES	ES				GB				GB	4		•		NB				
Wilson		GB			GB	GB		GB						GB	4		•		NB		•		
Winkler																	•		NB			•	
Wise	ES				ES	ES				GB				GB	4		•		NB				
Wood																	•	•	10				
Yoakum																	•		NB				
Young	ES				ES	ES				GB				GB	4		•		NB				
Zapata		GB			GB	GB		GB						GB	4		•		NB		•		
Zavala		GB			GB	GB		GB						GB	4		•		NB		•		

**ES** Either sex

**GB** Gobblers or bearded hens

**G** Gobblers only

**Wild turkey:** Mandatory harvest reporting in all open counties during all seasons.

**Turkey bag limit:** Four, in the aggregate, no more than one of which may be from the East Zone.

**AN** Angelina National Forest closed to turkey hunting.

**NB** No bag limit.

**Javelina bag limit:** Two per license year. Waste of game provisions apply (pg. 19).

# Definitions

## Active duty

Full-time military service in the U.S. Army, Navy, Marines, Air Force, Coast Guard, Reserves, National Guard or Texas State Guard; includes full-time training duty and attendance while in active service at a school designated as a service school by law or by the Secretary of the military department.

Note: Veteran Waterfowl and Active Military Waterfowl season definitions differ (pg 61).

## Aggregate limit

A daily bag or possession limit composed of more than one species or a single bag limit that applies to a group of countries.

## Aircraft

Any mechanical or other device used for flight; this includes unmanned aerial vehicles (aka drones). Aircraft may not be used, or any attempt, to hunt, locate (including wounded animals), photograph, count, harass, drive any animal without a department-issued permit.

## Air gun

A device that fires a bullet solely by the use of unignited compressed gas as the propellant.

## Annual bag limit

(alligator, deer, pronghorn, turkey or javelina)

The maximum number of these species that may be lawfully taken by a hunter during a license year.

## Antler Point

A projection that extends at least one inch from the edge of a main beam or another tine. The tip of a main beam is also a point.

## Antlerless Deer

A deer with no antler point protruding through the skin or a deer that has no antlers.

## Artificial lure

Any lure (including flies) with hook or hooks attached that is man-made and is used as a bait while fishing.

## Arrow gun

A device that fires an arrow or bolt solely by the use of unignited compressed gas as the propellant.

## Bait

Something that intentionally or unintentionally lures any wildlife resource. Includes, but not limited to, salt, grain, minerals, or other feed, directly or indirectly placed, exposed, deposited, distributed, or scattered. Does not include scent attractants for animals. It is unlawful to use game fish or any part thereof as bait.

## Baited area

Any (public or private) area where bait is found. For migratory game birds, this could include adjacent properties. There is no set distance from a baited area that a bird/animal may be hunted if the flight path or behavior is altered by its

placement. It is the hunter's responsibility to know if an area is baited. These areas are unlawful for ALL migratory game birds and wild turkeys in the East Zone and Public Hunting Land.

## Barotrauma

A condition caused by expansion of gases inside a fish, such as the stomach coming out of the mouth, bulging eyes, bloated belly, and/or distended intestines.

## Buck deer

A deer with an antler point protruding through the skin or a deer with antler growth in velvet of greater than one inch.

## Buck Pronghorn

A pronghorn with black cheek patches below the ears.

## Catch

To take or kill and includes an attempt to take or kill.

## CITES

Convention on International Trade in Endangered Species is an international agreement between governments to ensure that international trade in wild animals and plants does not threaten their survival.

## Community fishing lake

All public impoundments 75 acres or smaller located totally within an incorporated city limits or a municipal, city, county, or state park. For a listing of specific fishing regulations for these waters, pg. 31. For a list of Community Fishing Lakes in a specific area, call (512) 389-4444 or check online: [tpwd.texas.gov/oa/LakeFinder](http://tpwd.texas.gov/oa/LakeFinder).

## Closed season

For any species, the period of time, if any, when fishing or hunting that species is not permitted.

## Culling

Release of a fish after it was held in an angler's possession to be replaced with another fish of the same species.

## Daily bag limit (Anglers)

Quantity of a species of a resource, such as fish, that may be taken in one day.

## Daily bag limit (Hunters)

The maximum number of game animals/birds that may be lawfully taken or possessed by a hunter in one day. No person shall possess more than one daily bag limit while in the field or travelling to or from the field.

## Day

A 24-hour period of time that begins at midnight and ends at midnight.

## Depredation

Causing damage or destruction to property, commercial crops or native environments.

## Descending Device

An instrument capable of releasing a fish at the depth from

which the fish was caught with a weighted hook, lip clamp, or container that will hold the fish while it is lowered to depth to effect release. The device must be capable of releasing the fish automatically, by actions of the operator of the device, or by allowing the fish to escape on its own when at depth. The device must use a minimum of a 16-ounce (454-gram) weight and a minimum of a 60-ft (15.2-m) length of line.

## Final destination

The permanent residence (definition, pg. 48) of the hunter; the permanent residence of any other person receiving the animal/bird carcass part of an animal/bird carcass; or a Type 1 cold storage or processing facility.

## Final processing

The cleaning of a dead wildlife resource for cooking or storage purposes. For a deer or pronghorn carcass, the term includes the processing of the animal more than by quartering.

## Fishing

The act of taking or attempting to take aquatic animal life by any means.

## Fishing guide

A person who, for compensation, accompanies, assists, or transports a person or persons engaged in fishing in the water of this state. [tpwd.texas.gov/fishboat/fish/commercial](http://tpwd.texas.gov/fishboat/fish/commercial)

## Fishing guide deck hand

A person in the employ of a fishing guide who assists in operating a boat for compensation to accompany or to transport a person or persons engaged in fishing in the water of this state. [tpwd.texas.gov/fishboat/fish/commercial](http://tpwd.texas.gov/fishboat/fish/commercial)

## Gear tag

A tag constructed of material as durable as the device to which it is attached. The gear tag must be legible, contain the name and address, or customer number, of the person using the device, and the date the device was set out. Date is not required for saltwater trotlines or crabtraps fished under a commercial license. For juglines, freshwater trotlines, minnow traps, and throwlines properly marked buoys or floats qualify as valid gear tags.

## Hunt

To capture, trap, take, or kill, and includes the act of attempting to capture, trap, take, or kill.

## Immediate consumption

The preparation process for a carcass portion to be immediately cooked and eaten. This would not include processed portions stored while marinating for later consumption.

## Legal shooting hours for all game animals and nonmigratory (upland) game birds

The period from one-half hour before official sunrise to one-half hour after official sunset. For information on sunrise/sunset hours: [tpwd.texas.gov/oa/sun](http://tpwd.texas.gov/oa/sun)

## Livestock

Includes but is not limited to cattle, horses, mules, sheep, goats and domesticated/non-feral swine.

## Manipulation

The alteration of natural vegetation or agricultural crops, including but not limited to mowing, shredding, discing, rolling, chopping, trampling, flattening, burning and herbicide treatments. Only lawful for dove hunting, NOT waterfowl or cranes. Manipulation does not include the incidental distributing or scattering of grain, seed or other feed after removal from or storage on the field where grown.

## Migratory bird preservation facility

A stationary facility designed and constructed to store or process game birds.

## Motorboat

Any vessel propelled or designed to be propelled by machinery, whether or not the machinery is permanently or temporarily affixed or is the principal source of propulsion.

## Natural vegetation

Any non-agricultural, native or naturalized plant species that grows at a site in response to planting or from existing seeds or propagule. Natural vegetation does not include planted millet. However, planted millet that grows on its own in subsequent years after the planting is considered natural vegetation (only natural vegetation may be manipulated for waterfowl and crane hunting.)

## Nongame fish

All species not listed as game fish except endangered and threatened fish, which are defined and regulated under separate rules.

## Normal agricultural planting, harvesting, and post-harvest manipulation

A normal agricultural planting or harvesting undertaken for the purpose of producing and gathering a crop, or manipulation (including post-harvest) after such harvest and removal of a crop, that is conducted in accordance with official recommendations of State Extension Specialists of the Cooperative Extension Service of the U.S. Department of Agriculture. Includes commercial harvest, loading and unloading. Does not include the broadcast spreading of seed that is normally drill-planted.

## Normal stabilization practice

A planting for agricultural soil-erosion control or post-mining land-reclamation conducted in accordance with official recommendations of State Extension Specialists of the Cooperative Extension Service of the U.S. Dept. of Agriculture.

## Open season

The period of time during which it is lawful to pursue, hunt, take, or attempt to take a specified animal, bird, or fish. The dates in this guide are opening and closing dates for the open season which includes all dates between them.

## Operate

To navigate or otherwise use a motorboat or a vessel.

## Outboard motor

Any self-contained internal combustion propulsion system, excluding fuel supply, which is used to propel a vessel and which is detachable as a unit from the vessel.



### Party boat

A vessel, other than a sailboat, of 30 feet or more in length that is operated on inland waters of the state by the owner of the vessel or an employee and is rented or leased for a recreational event for more than six passengers.

### Permanent residence

One's principal or ordinary home or dwelling place. This does not include one's temporary abode or dwelling such as a hunting/fishing club, or any club house, cabin, tent, car, truck, or trailer house used as a hunting/fishing club, or any hotel, motel, or rooming house used during a hunting, fishing, pleasure, or business trip.

### Personal watercraft

A type of motorboat that is specifically designed to be operated by a person or persons sitting, standing, or kneeling on the vessel rather than in the conventional manner of sitting or standing inside the vessel.

### Possession limit (hunters)

The maximum number of any animal or bird that may be possessed by any person at any place. This limit only ceases when a bird or animal is legally finally processed or reaches its final destination. Final processing may only occur at final destination or cold storage facility.

### Possession limit (anglers)

The maximum number of fish a person may possess before returning to their residence. Possession limit is twice the daily bag on game and nongame fish, except as provided in this guide, and does not apply to fish in the possession of or stored by a person at their residence.

### Pre-charged pneumatic

An air gun or arrow gun for which the propellant is supplied or introduced by means of a source that is physically separate from the air gun or arrow gun. Note: Air guns or arrow guns powered by CO2 canisters are NOT pre-charged pneumatics.

### Residence (anglers)

A permanent structure where a person regularly sleeps and keeps personal belongings such as furniture and clothes, but does not include a temporary abode or dwelling such as a hunting or fishing club, or any club house, cabin, tent or trailer house or mobile home used as hunting or fishing camp, or any hotel, motel or rooming house used on a temporary basis.

### Sell

To transfer the ownership or the right of possession of an item to a person for consideration and includes a barter and an even exchange.

### Sinkbox

A low floating device concealing a person below the surface of the water. Sinkboxes are unlawful.

### Tag

A label attached to a harvested resource (such as animal, fowl, fish). The type of license (physical or digital) may affect the type of tag authorized for use.

### Venting tool

A device capable of penetrating the abdomen of a fish for purposes of releasing gases accumulated in the body cavity as a result of retrieving the fish from depth. It must be a sharpened, hollow instrument that allows air to escape and of at least a 16-gauge, with an outside diameter of no less than 0.065 inches (1.65 mm).

### Veteran

A person who served in the active military, naval, or air service, and who was discharged or released there from under conditions other than dishonorable. Note: Veteran Waterfowl and Active Military Waterfowl season definitions differ (pg 61).

### Vessel

Any watercraft, other than a seaplane on water, used or capable of being used for transportation on water.

### Waterfowl

Ducks (including teal), geese, mergansers, and coots. Does NOT include Sandhill Crane.

### Wildlife resource

Any wild animal, wild bird, or aquatic life.

### Wildlife Resource Document (WRD)

A document that allows a person to give, leave, receive, or possess any species (or part of) of legally taken game birds, game fish or game animals; WRD must contain:

- (A) name, signature, address, and hunting license number of the person who harvested or caught the wildlife resource;
- (B) name of the person receiving the wildlife resource;
- (C) description of the wildlife resource (number and type of species or parts);
- (D) date the wildlife resource was harvested or caught; and
- (E) location where the wildlife resource was harvested or caught (name of ranch; area; county).

### Wounded deer

A deer leaving a blood trail.

**Youth** (for the purposes of participation in Youth-Only hunting seasons or special youth events)

Any person 16 years of age or younger.

## Commonly Used Abbreviations

<b>CDC</b>	Centers for Disease Control	<b>PWC</b>	Personal Watercraft
<b>CITES</b>	Convention on International Trade in Endangered Species	<b>TAHC</b>	Texas Animal Health Commission
<b>CWD</b>	Chronic Wasting Disease	<b>TCEQ</b>	Texas Commission on Environmental Quality
<b>EEZ</b>	Exclusive Economic Zone	<b>TDSHS</b>	Texas Department of State Health Services
<b>HIP</b>	Harvest Information Program	<b>TPWD</b>	Texas Parks and Wildlife Department
<b>IWVC</b>	Interstate Wildlife Violator Compact	<b>USCG</b>	United States Coast Guard
<b>MLDP</b>	Managed Lands Deer Program	<b>USDA</b>	United States Department of Agriculture
<b>OGT</b>	Operation Game Thief	<b>WMA</b>	Wildlife Management Area
<b>PFD</b>	Personal Flotation Device	<b>WRD</b>	Wildlife Resource Document
		<b>WTD</b>	White-tailed Deer

### TPWD REGIONAL AND FIELD LAW ENFORCEMENT OFFICES

<b>Abilene</b>	281 North Willis (79603) (325) 673-3333	<b>Laredo</b>	5119 Bob Bullock Loop (78041) (956) 718-1087
<b>Amarillo</b>	203 SW 8th Street, Suite 200 (79101) (806) 379-8900	<b>Lubbock</b>	1702 Landmark Lane, Suite 1 (79415) (806) 761-4930
<b>Beaumont</b>	5655 Eastex Frwy., Suite A (77706) (409) 892-8666	<b>Lufkin</b>	Old Texas Plaza, 4100 S. Medford Drive, Suite 204B (75901) (936) 632-1311
<b>Brownsville</b>	5460 Paredes Line Road, Ste. 201 (78526) (956) 546-1952	<b>Midland</b>	4500 West Illinois, Suite 307 (79703) (432) 520-4649
<b>Brownwood</b>	301 Main, Suite D (76801) (325) 646-0440	<b>Mt. Pleasant</b>	212 South Johnson (75455) (903) 572-7966
<b>College Station</b>	12815 FM 2154 (Wellborn Road) Suite 160 (77845) (979) 696-4148	<b>Rockport</b>	715 South Hwy. 35 (78382) (361) 790-0312
<b>Corpus Christi</b>	5541 Bear Lane, Suite 232 (78405) (361) 289-5566	<b>Rusk</b>	580 West Sixth Street (75785) (903) 683-2511
<b>El Paso</b>	401 East Franklin, Suite 520 (79901) (915) 834-7050	<b>San Angelo</b>	3407 South Chadbourne (76903) (325) 651-4844
<b>Fort Worth</b>	5400 Airport Frwy, Suite E (76117) (817) 831-3128	<b>San Antonio</b>	2391 N.E. Loop 410, Suite 409 (78217) (210) 348-7375
<b>Garland</b>	346 Oaks Trail, Suite 100 (75043) (972) 226-9966	<b>Temple</b>	3615 South General Bruce Drive (76504) (254) 778-8913
<b>Houston (north)</b>	350 North Sam Houston Pkwy E., Ste. 100 (77060) (281) 931-6471	<b>Tyler</b>	11942A FM 848, Suite 100 (75707) (903) 534-0388
<b>Houston (south)</b>	10101 Southwest Frwy, #206 (77074) (713) 779-8977	<b>Victoria</b>	2502 E Mockingbird Lane (77904) (361) 575-6306
<b>Kerrville</b>	309 Sidney Baker South (78028) (830) 257-7611	<b>Waco</b>	1601 East Crest Drive (76705) (254) 867-7951
<b>LaMarque</b>	12007 Delany Road (77568) (409) 933-1947	<b>Wichita Falls</b>	4822 Kemp Blvd., Suite 1300 (76308) (940) 723-7327



GET THE MOST UP-TO-DATE REGULATIONS:  
**OUTDOORANNUAL.COM**

## NON-CORE ALLIGATOR HIDE TAG REPORT

Name of Ranch/Landowner _____	TPWD USE Hide Tag No. _____
Harvest Date _____ County of Take _____	
Hunter's Name _____	Sex of Gator _____
Physical Address _____	Carcass Length (unskinned) _____
City _____ Zip Code _____	Hide Use: <input type="checkbox"/> Sale <input type="checkbox"/> Personal
Address for Tag Delivery _____	Skinning Method: <input type="checkbox"/> Belly <input type="checkbox"/> Hornback
City _____ Zip Code _____	Method of Take: <input type="checkbox"/> Hook & Line <input type="checkbox"/> Archery
Phone _____	<input type="checkbox"/> Snare <input type="checkbox"/> Gig
Hunting Lic. No. _____	<input type="checkbox"/> Firearm <input type="checkbox"/> Other
Customer No. _____	Dispatch Method _____

I CERTIFY THAT THE INFORMATION LISTED HEREON IS TRUE AND CORRECT.

**NOTE:** Failure to **SUBMIT ALL INFORMATION** or enter a false statement in a government record is a Class A misdemeanor or a felony of the third degree under the Texas Penal Code.



The Texas Parks and Wildlife Department maintains the information collected through this form. With few exceptions, you are entitled to be informed about the information we collect. Under Sections 552.021 and 552.023 of the Texas Government Code, you are also entitled to receive and review the information. Under Section 552.004, you are also entitled to have this information corrected. Texas Parks and Wildlife Department, 4200 Smith School Rd., Austin, TX 78744, www.tpwd.texas.gov

PWD 304A-W7000 (5/21)

\_\_\_\_\_  
Hunter's Signature

Complete and submit to the Department, accompanied by a \$21.00 payment for a CITES tag within 72 hours of harvest.

Submit to: Texas Parks and Wildlife Department,  
Alligator Program  
4200 Smith School Road, Austin, TX 78744

## WILDLIFE RESOURCE DOCUMENT

**Refer to sections on Transfer of Wildlife Resources, Cold Storage/Processing Facility, and Taxidermist for an explanation of requirements to complete and possess this document.**

I, \_\_\_\_\_  
(1) Name (2) Phone

\_\_\_\_\_  
(3) Address City / State / Zip

give, donate, leave the wildlife resource(s) or parts thereof, listed below to: (complete Sections 4 through 12), OR possess the wildlife resource(s) or parts thereof, listed below, without other applicable licenses, stamps, tags, or permits (complete Sections 6 through 12):

\_\_\_\_\_  
(4) Receiver's Name

\_\_\_\_\_  
(5) Address City / State / Zip

(6) Number and Type of Species or Parts

which was killed or caught on (7) Date \_\_\_\_\_ at the following location:

\_\_\_\_\_  
(8) Name of Ranch, Area, Lake, Bay, or Stream and County, State, or Country

(9) Hunt and/or Fish License of person who killed or caught the wildlife resource described in Section 6 (10) State

\_\_\_\_\_  
(11) Signature

\_\_\_\_\_  
(12) Date

**NOTE:** Reproduction of this information is allowed, in any form, including a legible handwritten version. Form is also available online: [tpwd.texas.gov/oa/transfer](http://tpwd.texas.gov/oa/transfer)