



**United Nations Regional Workshop on
The 2020 World Programme on Population and Housing Censuses:
International Standards and Contemporary Technologies**

**SESSION 3:
ESSENTIAL FEATURES, DEFINITION AND METHODOLOGIES
OF POPULATION AND HOUSING CENSUSES:
MALAYSIA**

EZATUL NISHA ABDUL RAHMAN

Department of Statistics, Malaysia

25 June 2018 | Park Royal Hotel, Kuala Lumpur

 www.dosm.gov.my

 @StatsMalaysia @Dr_Uzir

 @StatsMalaysia @DrUzirMahidin



#MyCensus2020

OUTLINES

INTRODUCTION
MALAYSIA POPULATION
AND HOUSING CENSUS



MYCTP
MALAYSIA CENSUS
TRANSFORMATION PROGRAM



OUTCOMES
BENEFIT BEYOND CENSUS 2020



MYCENSUS 2020
EVOLUTION, METHODOLOGY
AND TRANSFORMATION

MYIPCS
MALAYSIA INTEGRATED
POPULATION CENSUS SYSTEM



#MyCensus2020



INTRODUCTION MALAYSIA POPULATION AND HOUSING CENSUS (MYCENSUS)

BACKGROUND OF CENSUS

6th CENSUS 2020 – 6th

Population and Housing Census is conducted every 10 years. Since establishment of Malaysia in 1963, 5 census have been implemented



PURPOSE

To accurately measure numbers and key demography and socioeconomic characteristics of Malaysia's population, households and living quarters at one point in time



LEGAL BASIS

- Census Act 1960 (Revised 1969).
- Statistics Act 1965 (Revised 1989).



RESOLUTION

Resolution on 2020 World Population and Housing Census Programme adopted by the ECOSOC (10 June 2015) to ensure the member states to conduct a census during 2015–2024 period.



MANUAL

Principles and Recommendations for Population and Housing Censuses, Revision 3, UNSD (2015).



OBJECTIVES

1

To compile the total coverage and profile of the population, households and living quarters in Malaysia with a wide range of demographic and socio-economic characteristics to the smallest area

2

To provide input for planning, formulation and implementation of government policies and development programmes as stated in the Legislation

3

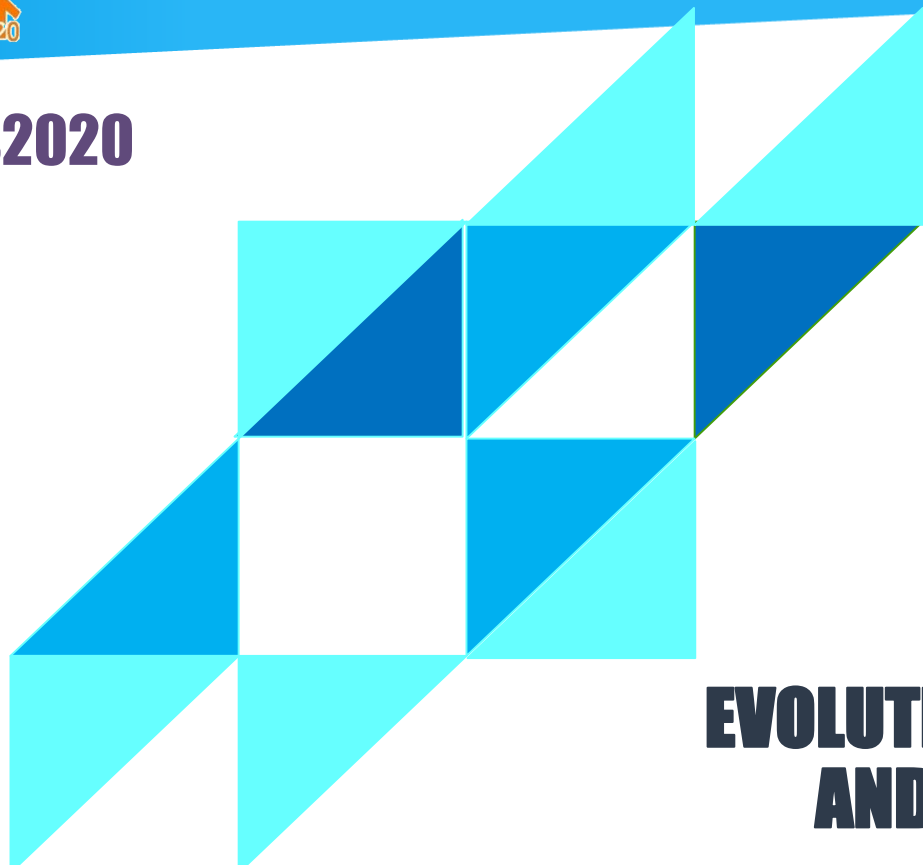
To provide a reliable basis for the estimation and projection of the population and living quarter

4

To provide input for the development of new socio-economic key indicators



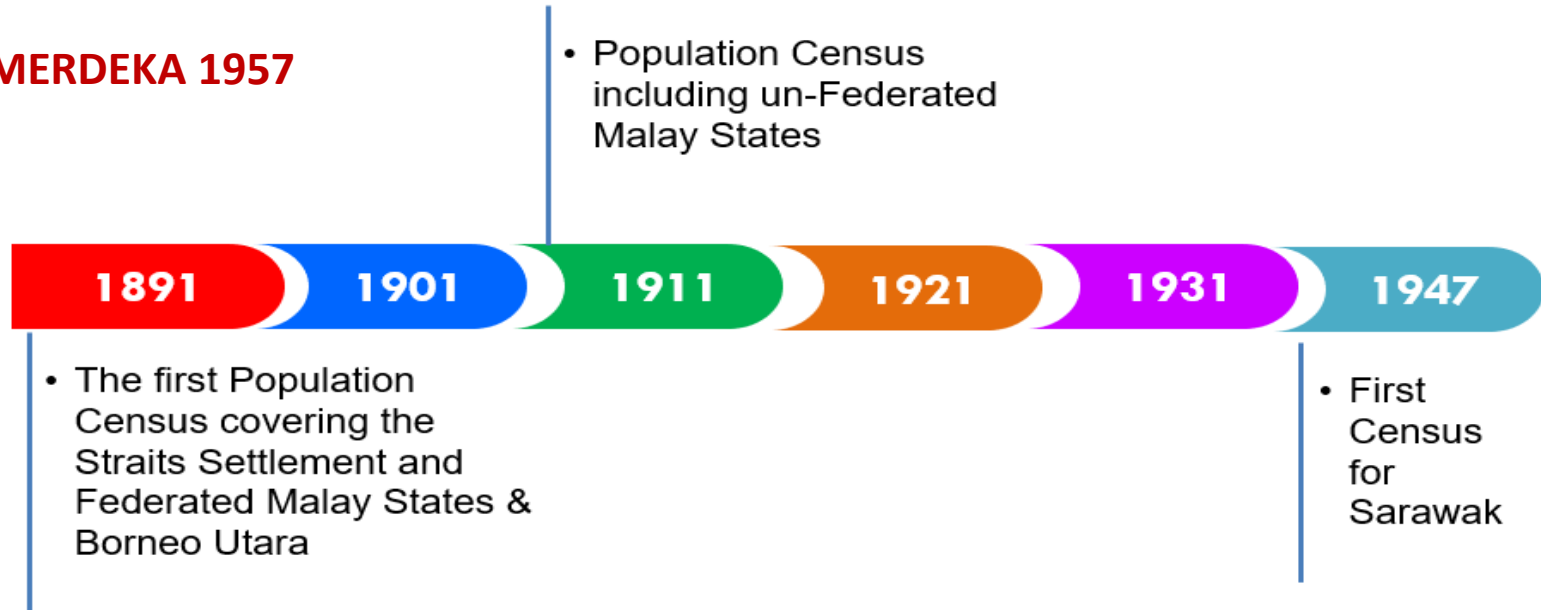
#MyCensus2020



MYCENSUS 2020 EVOLUTION, METHODOLOGY AND TRANSFORMATION

EVOLUTION OF MYCENSUS

Before MERDEKA 1957



EVOLUTION OF MYCENSUS



1970

- Conducted separately 27 July 1970 (Housing), 25 August 1970 (Population)
- Approach: De Facto
- Mode: Face-to-face interview



1980

- Conducted separately 17 May 1980 (Housing), 11 June 1980 (Population)
- Approach: De Facto
- Mode: Face-to-face interview



1991

- Conducted simultaneously on 14 August 1991
- Approach: De Facto & De Jure
- Mode: Face-to-face interview



2000

- Conducted simultaneously on 5 July 2000
- Approach: De Jure
- Mode: Face-to-face interview



2010

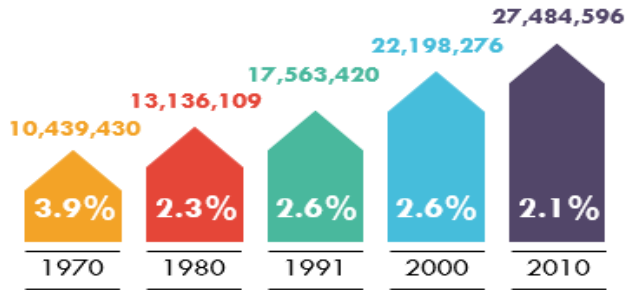
- Conducted simultaneously on 6 July 2010
- Approach: De Jure
- Mode: Face-to-face interview, Drop Off Pick Up (DOPU) & e-Census



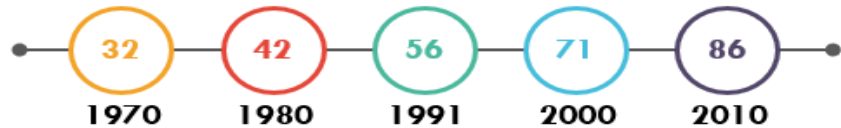
FINDINGS: CENSUS 1970 - 2010



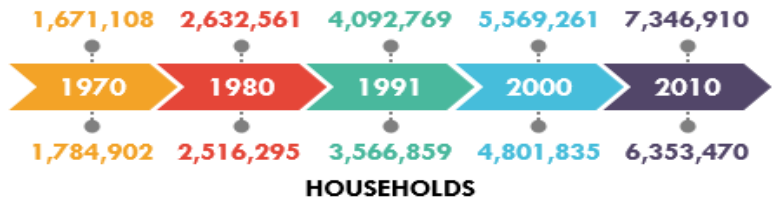
POPULATION & GROWTH RATE



POPULATION DENSITY(per km²)



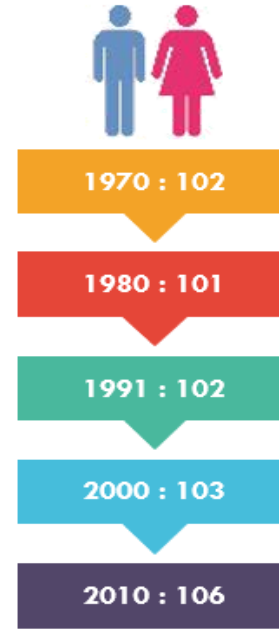
LIVING QUARTERS



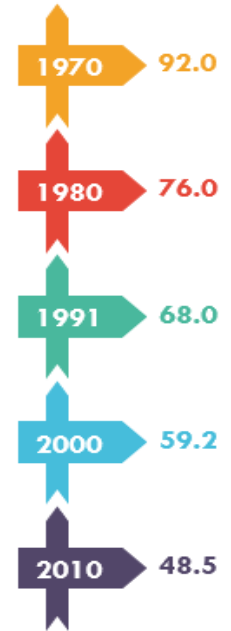
MEDIAN AGE



SEX RATIO¹



DEPENDENCY RATIO²



NOTES:

1. Per 100 female
2. The population in the age groups of young (below 15 years) and old age (above 65 years) to be bear for every 100 people of working age (15 years to 65 years)

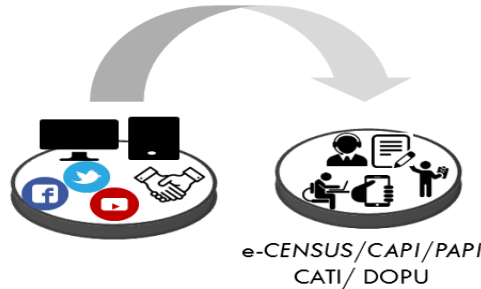


MYCENSUS 2020 TRANSFORMATION



MOTIVATE POPULATION TO RESPOND

- Strategic Communication Plan on Census 2020 *
- Engagement with various parties/agencies
- Publicity through various media & target group
- More use of digital media



COUNT ON POPULATION, HH & LQ

- Make it easy for people to respond anytime & anywhere
- Encourage people to use self-enumeration*
- Use the latest & cost effective technology - Mobile Apps*
- Field data collection – monitored digitally*

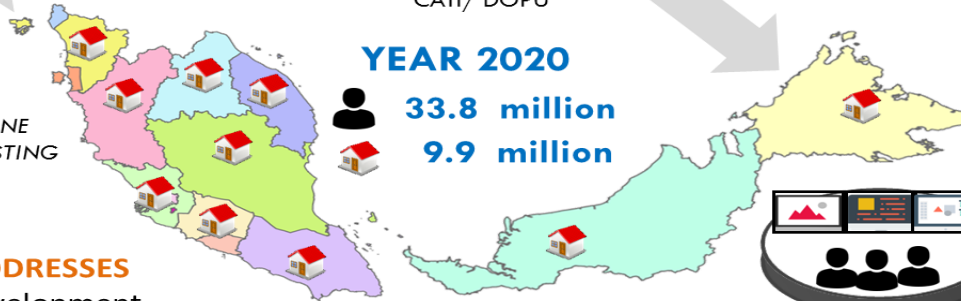
YEAR 2020

33.8 million
9.9 million

FIELD WORK



ONLINE SELF-LISTING



* Census 2020 Innovation

IDENTIFICATION OF ADDRESSES

- MSAR* & MSPR* Development
- Modernisation of listing - online self-listing & use of mobile apps in the field

MSAR – Malaysia Statistical Address Register
MSPR – Malaysia Statistical Population Register

STATISTICS COMMUNICATION

- Main Parameter : 3 months
 - Final Data : 9 months
 - Easy access to data through Census Portal & Stats Geoportal*
- After operation completes

- July 2020
- De Jure approach



www.dosm.gov.my

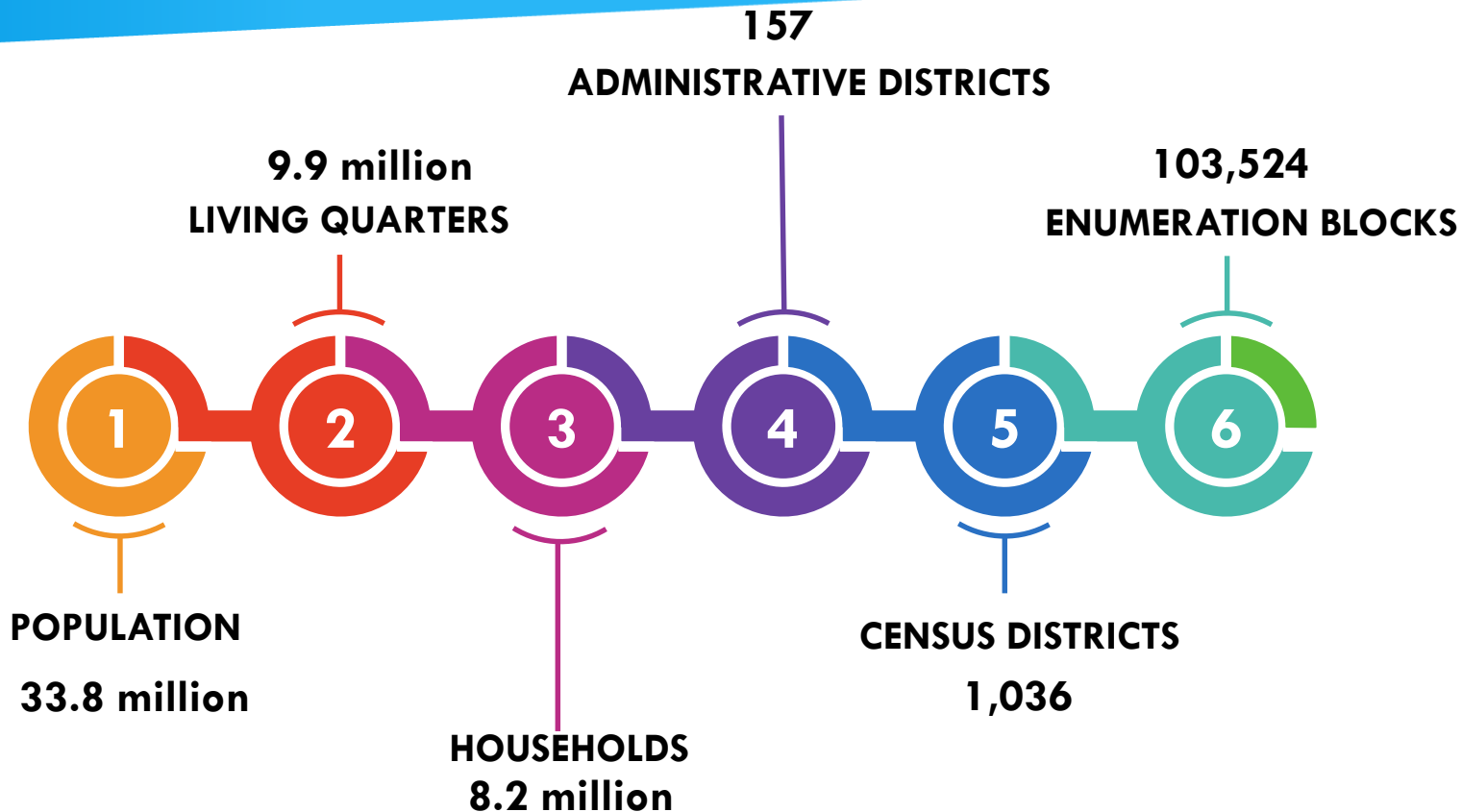


@StatsMalaysia @DrUzirMahidin

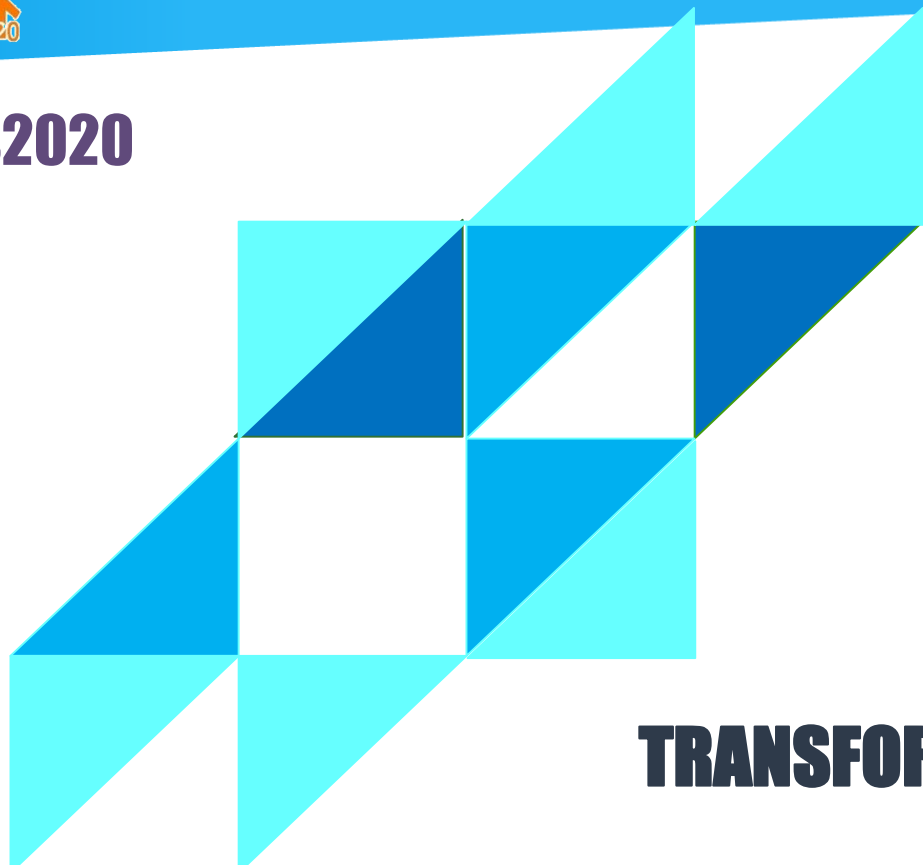


@StatsMalaysia @Dr_Uzir

CENSUS 2020 PROJECTION

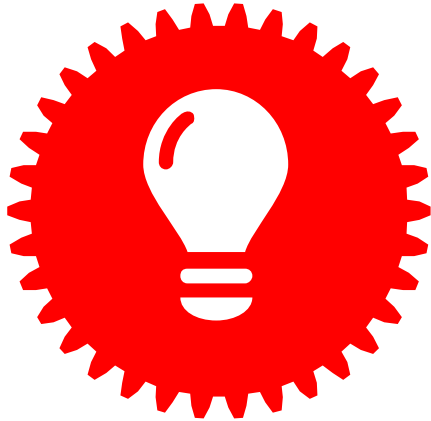


#MyCensus2020



MYCTP **MALAYSIA CENSUS** **TRANSFORMATION PROGRAM**

WHAT IS MALAYSIA CENSUS TRANSFORMATION PROGRAMME (MyCTP) ?



Transformation that encompasses **6 elements of innovation** in the implementation of the Population and Housing Census of Malaysia 2020



Operational design towards modernization through a **new ICT-based framework** aligns with **Malaysia National Development Strategy** (MyNDS) outlined in the 11th Malaysia Plan of delivering **high-performance, high impact** and **cost-effective** outcomes

OBJECTIVES OF MyCTP



Produce **high quality and timely statistics** according to user expectations

Integrate census data, administrative data and survey into an **integrated database**

Transforming the implementation of Census towards the **use of ICT**



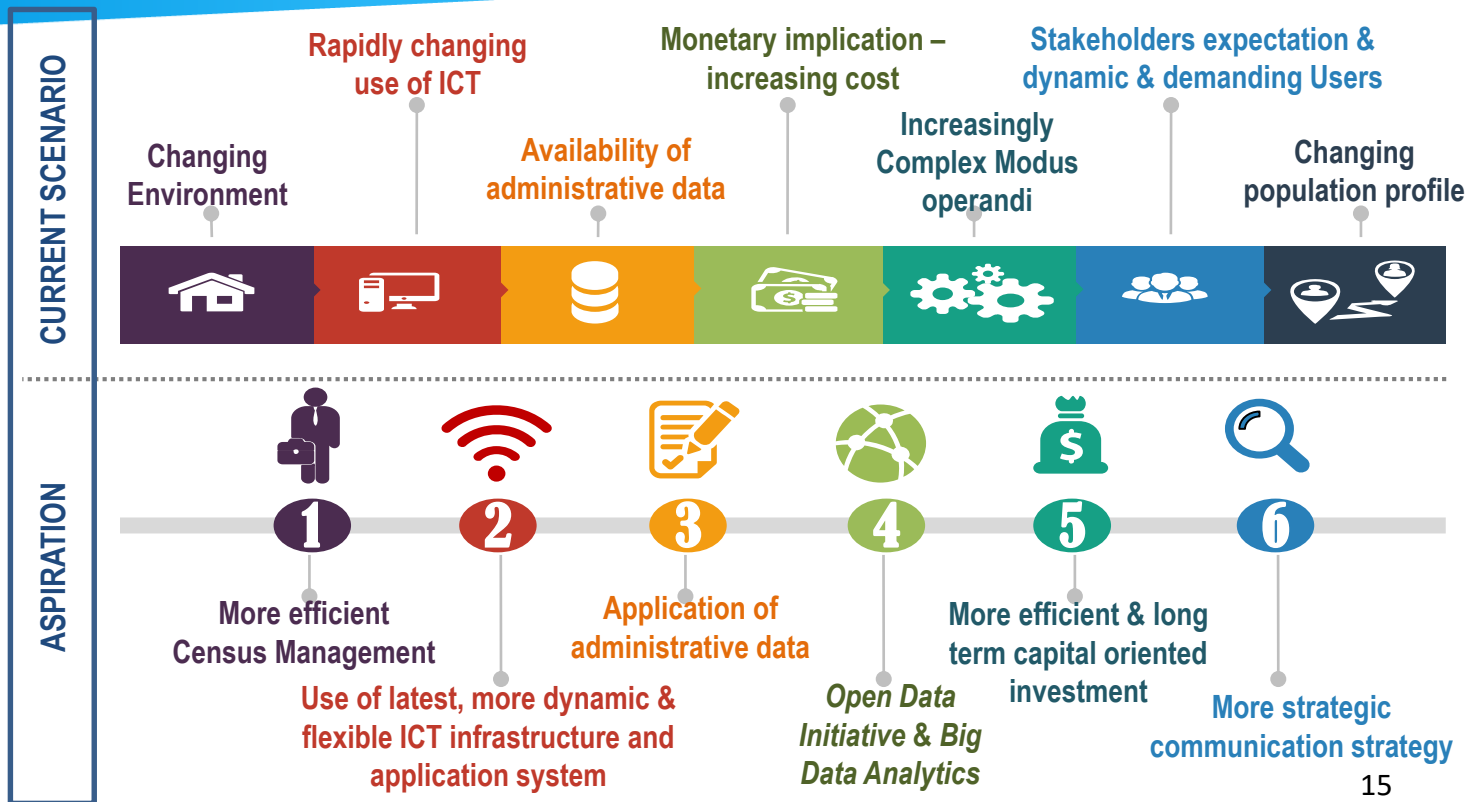
Modernization of census activities to be more **efficient** and **cost-effective**

Increase the potential of the Department through **long-term investment**

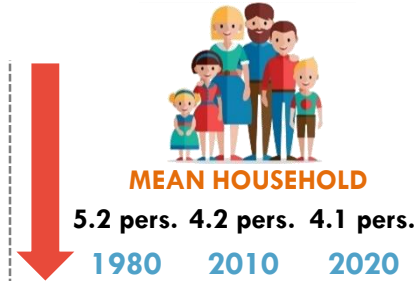
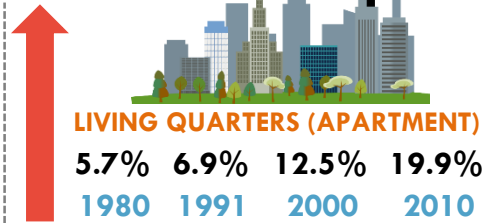
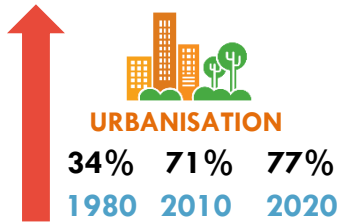
Increase the confidence of respondents in providing information



WHY MyCTP?



CHALLENGES OF MyCENSUS 2020



COMPLEXITY OF CENSUS MODUS OPERANDI

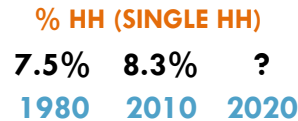


STAKEHOLDERS EXPECTATIONS & DYNAMIC USERS



Request More Information

RESPONDENT CHARACTERISTICS



POPULATION 65 YEARS+



✓ **GENERATIONAL GAP**

2020 CENSUS TRANSITION PLAN

- i. Reengineering Address Canvassing
- ii. Optimizing Self-Response
- iii. Utilizing Administrative Records and Third-Party Data
- iv. Reengineering Field Operations



KEY TRANSFORMATION

CENSUS TRANSFORMATION PROGRAMME

- i. An online census
- ii. Administrative data
- iii. Plans Beyond 2021

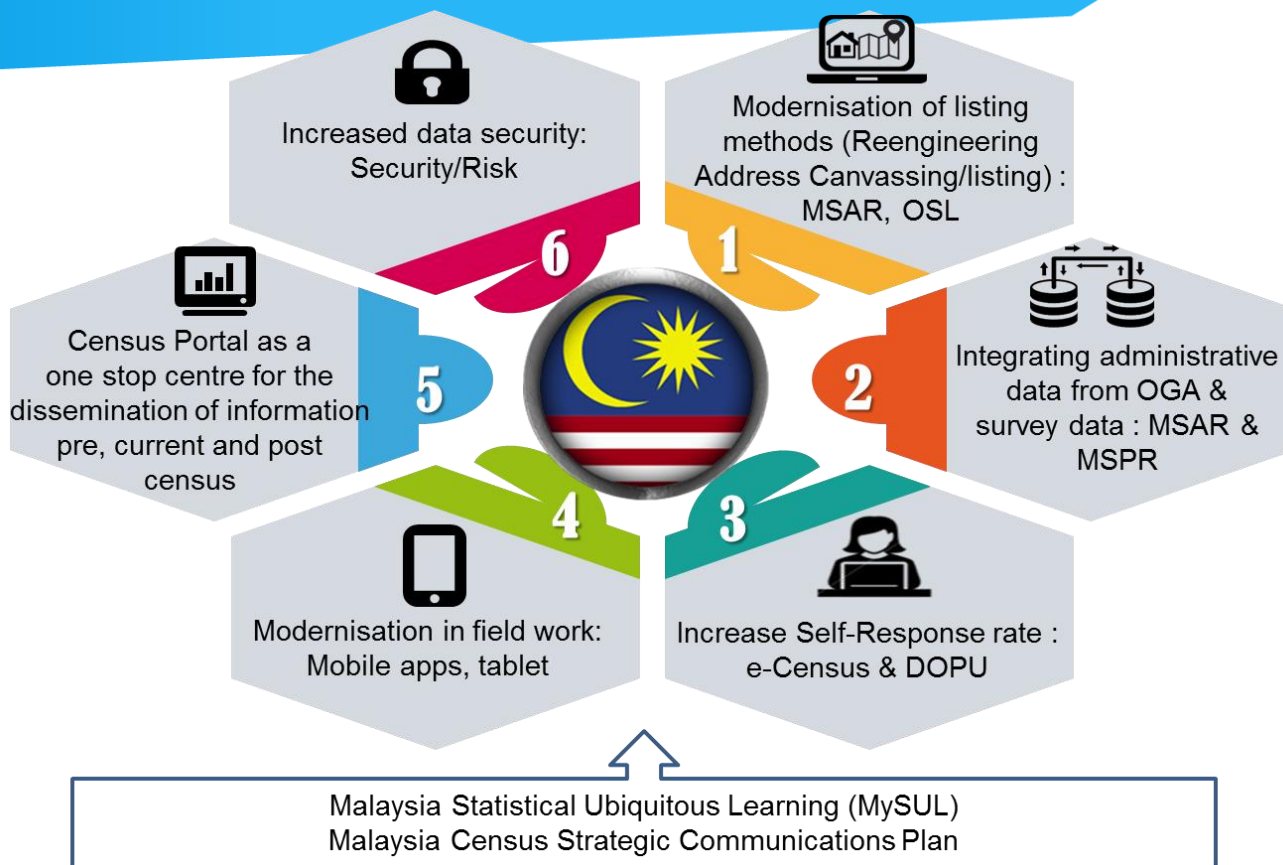


THE 2016 CENSUS STRATEGY PROJECT

- i. Feasible Approach
 - ❖ traditional census
 - ❖ existing administrative registers
 - ❖ continuous measurement
- ii. Country-Specific Legislation Related to The Definition of a Census
- iii. Administrative Data Census Project



MyCTP: ELEMENTS OF INNOVATION



1ST ELEMENT OF INNOVATION



Modernisation of listing methods (Reengineering Address Canvassing/listing):
1 MSAR, OSL

SOURCE OF DATA

- List of Address in NEWSS
- EB Map in GIS Format
- List of Address, Housecode & Geocode from POS Malaysia & TM Smart Map

FRAME UPDATE & MAPPING

- Online self Listing (OSL)
- CAPI
- Fieldwork
- Updating Digital Map
- Integration of information in MSAR with NEWSS and GIS Smart Geosearch

MSAR

- Standard Complete Address Format
- StatsBDA Platform
- Address LQ & GIS
- Address ID (*identifier*) for every LQ



2ND ELEMENT OF INNOVATION

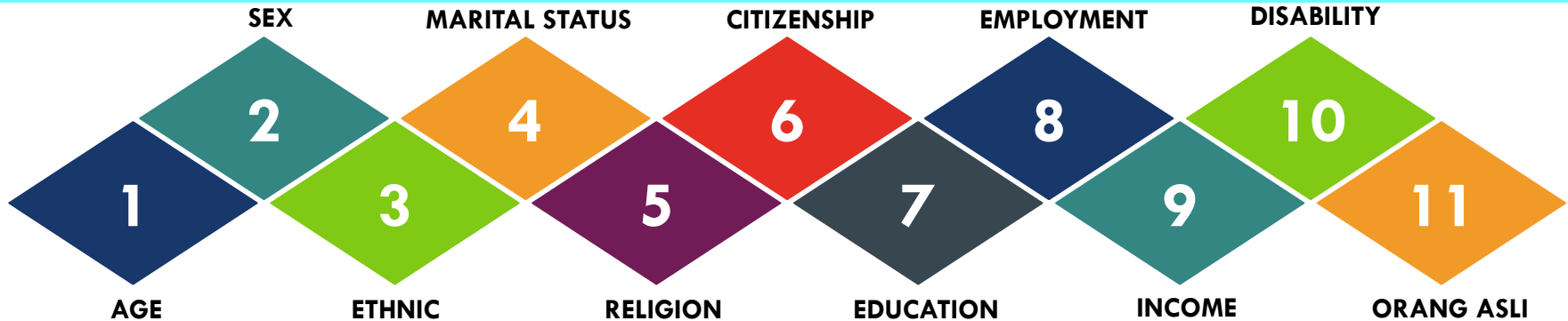
MSPR

2

Integrating administrative data from OGA & survey data : MSAR & MSPR



LIST OF VARIABLES FROM ADMINISTRATIVE DATA



ID NO. / PASSPORT



3RD ELEMENT OF INNOVATION

3



Increase Self-Response rate :
e-Census & DOPU



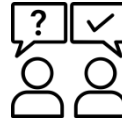
CAPI

40%



e-Census

30%



PAPI

20%



CATI

5%










DOPU

5%

CENSUS 2020 MODE OF ENUMERATION



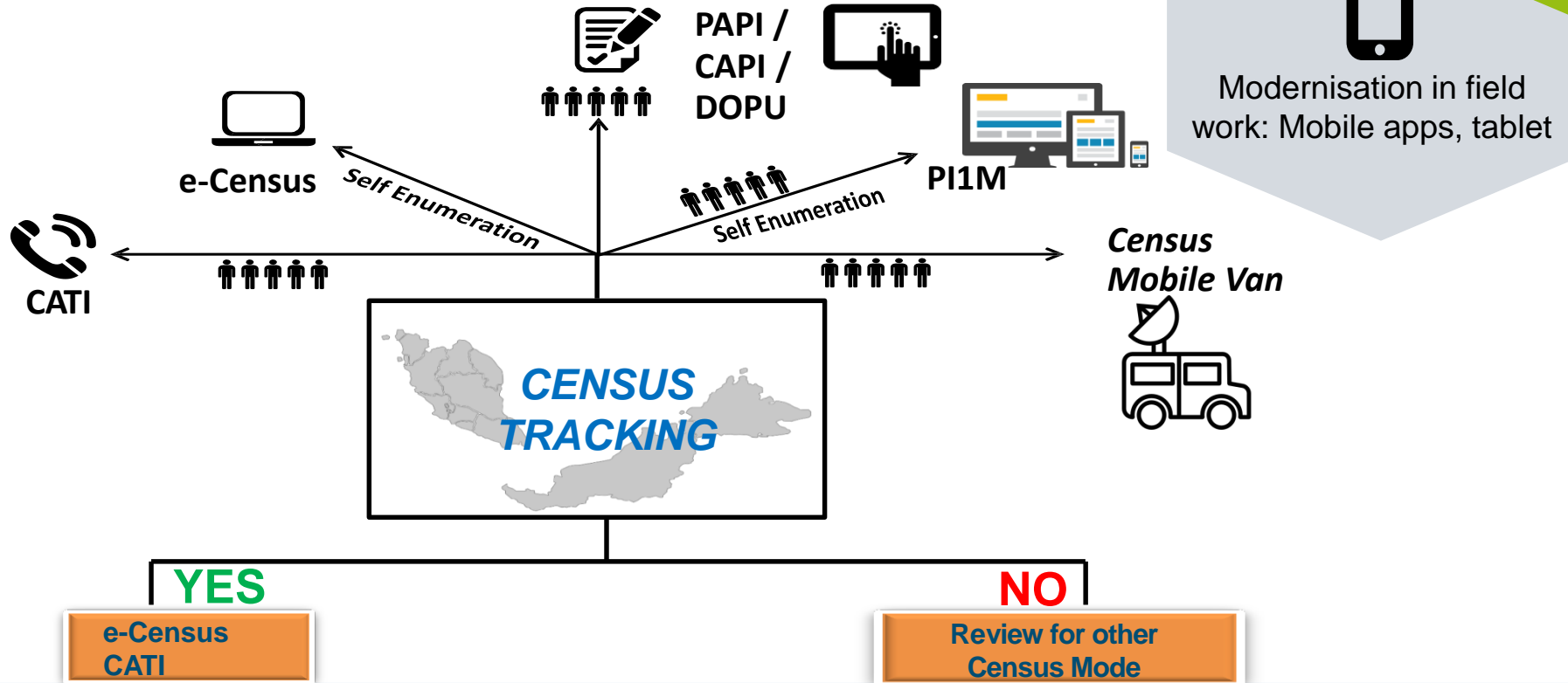
3RD ELEMENT OF INNOVATION

							
YEAR	2015	2016	2016	2016	2020	2021	2020
ADMINISTRATIVE DATA	✓		✓	✓	✓	✓	✓
e-CENSUS	✓		✓	✓	✓	✓	✓
CAPI		✓	✓		✓	✓	✓
MOMB					✓		
DOPU		✓	✓	✓			✓
CATI							✓

4TH ELEMENT OF INNOVATION



4





Census Portal as a one stop centre for the dissemination of information pre, current and post census

5

MyCensus Portal & Stats Geoportal

Census Info

- ❖ Background
- ❖ History
- ❖ Census Act
- ❖ Organisation
- ❖ Census Activity

Publicity

- ❖ Infographic
- ❖ Video
- ❖ *Newsletter*
- ❖ Current Activity
- ❖ Media

Application

- ❖ e-Census
- ❖ Census Tracking (e-RKL)
- ❖ U-Learning (MySUL)

Census Product

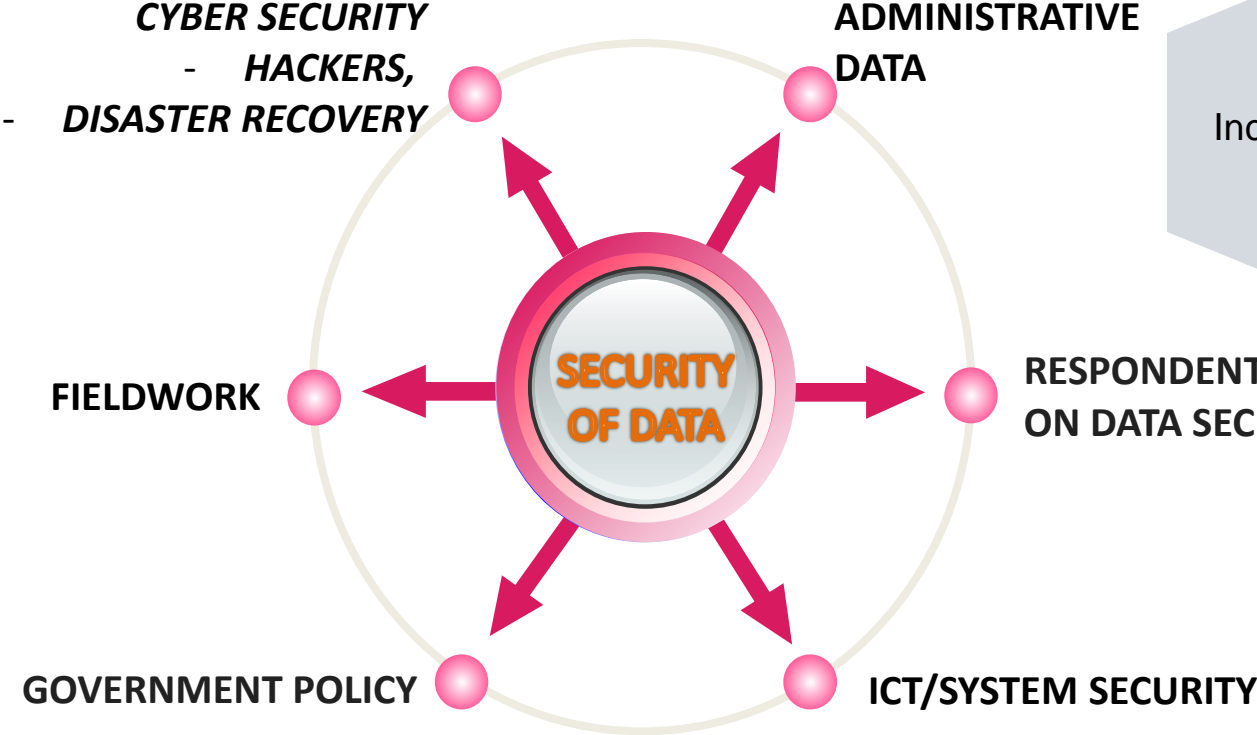
- ❖ ARC
- ❖ Research
- ❖ Publication
- ❖ Infographic
- ❖ Visualisation
- ❖ Table Builder

Portal Geospatial

- ❖ GIS
- ❖ Population Data in GIS
- ❖ Other Statistics



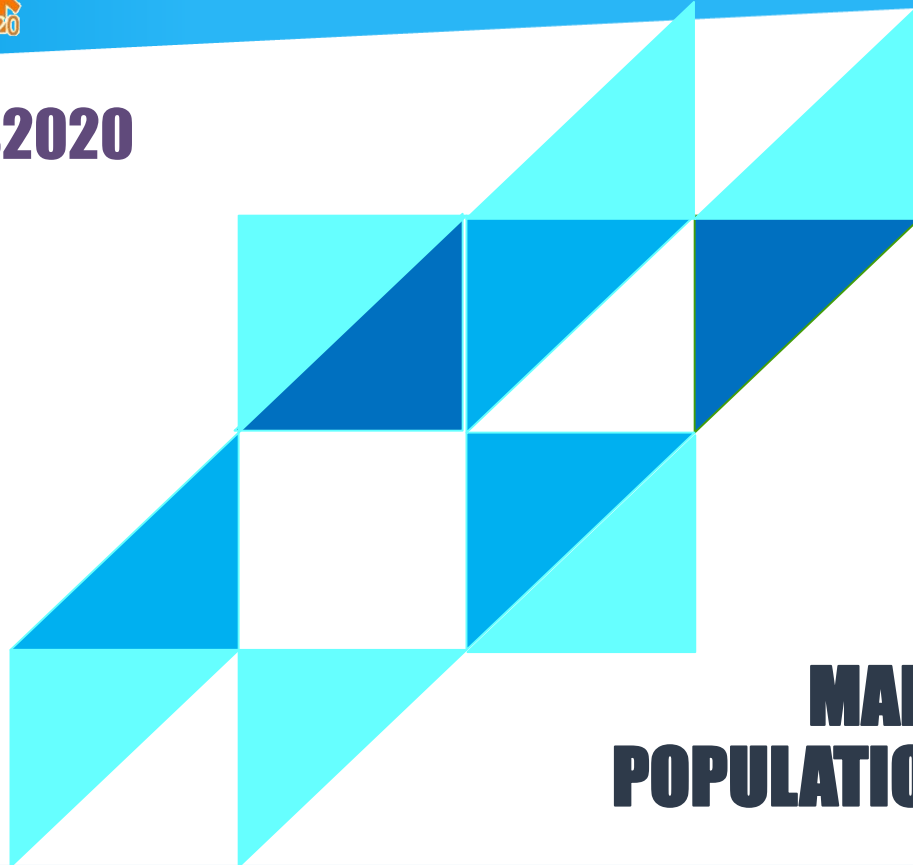
6TH ELEMENT OF INNOVATION



Increased data security:
Security/Risk

6

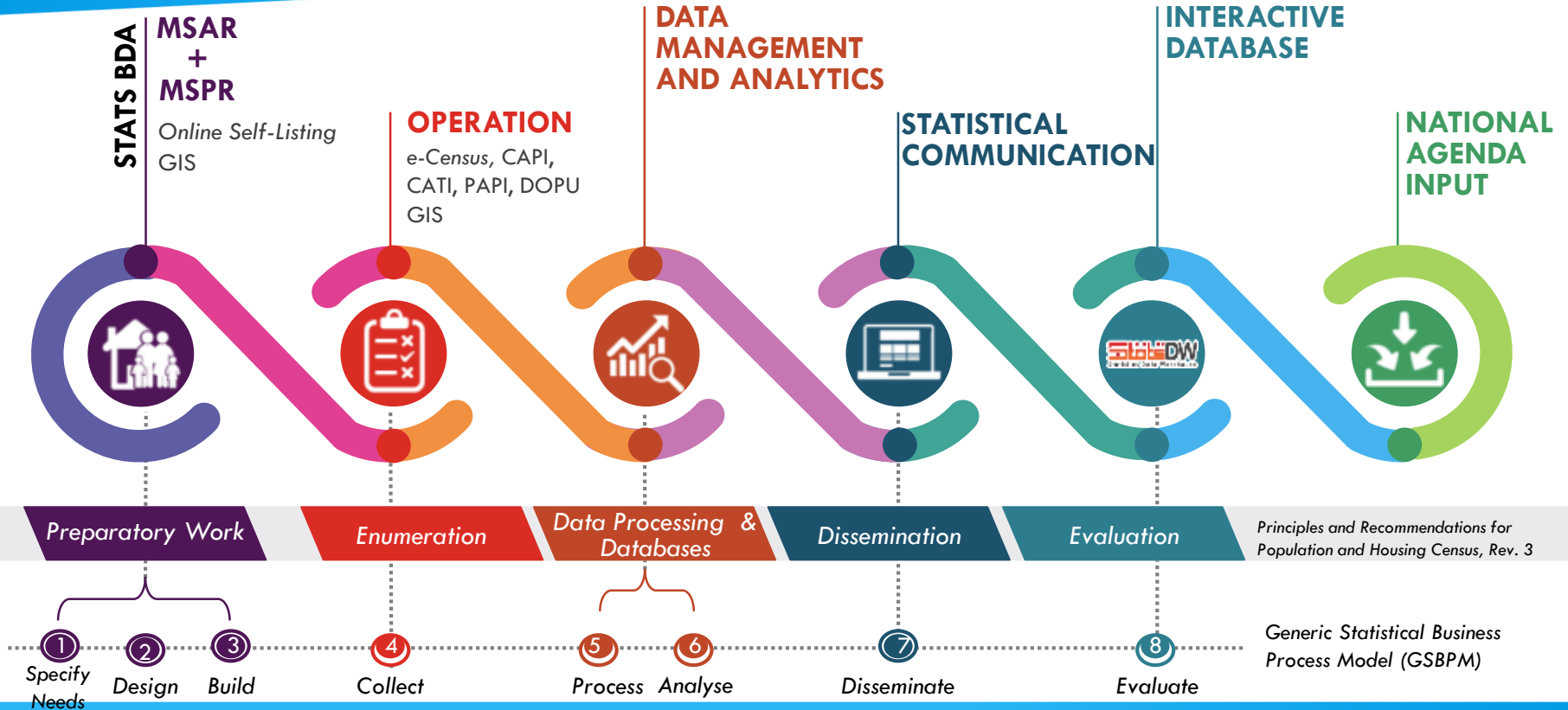
#MyCensus2020



4

MYIPCS
MALAYSIA INTEGRATED
POPULATION CENSUS SYSTEM

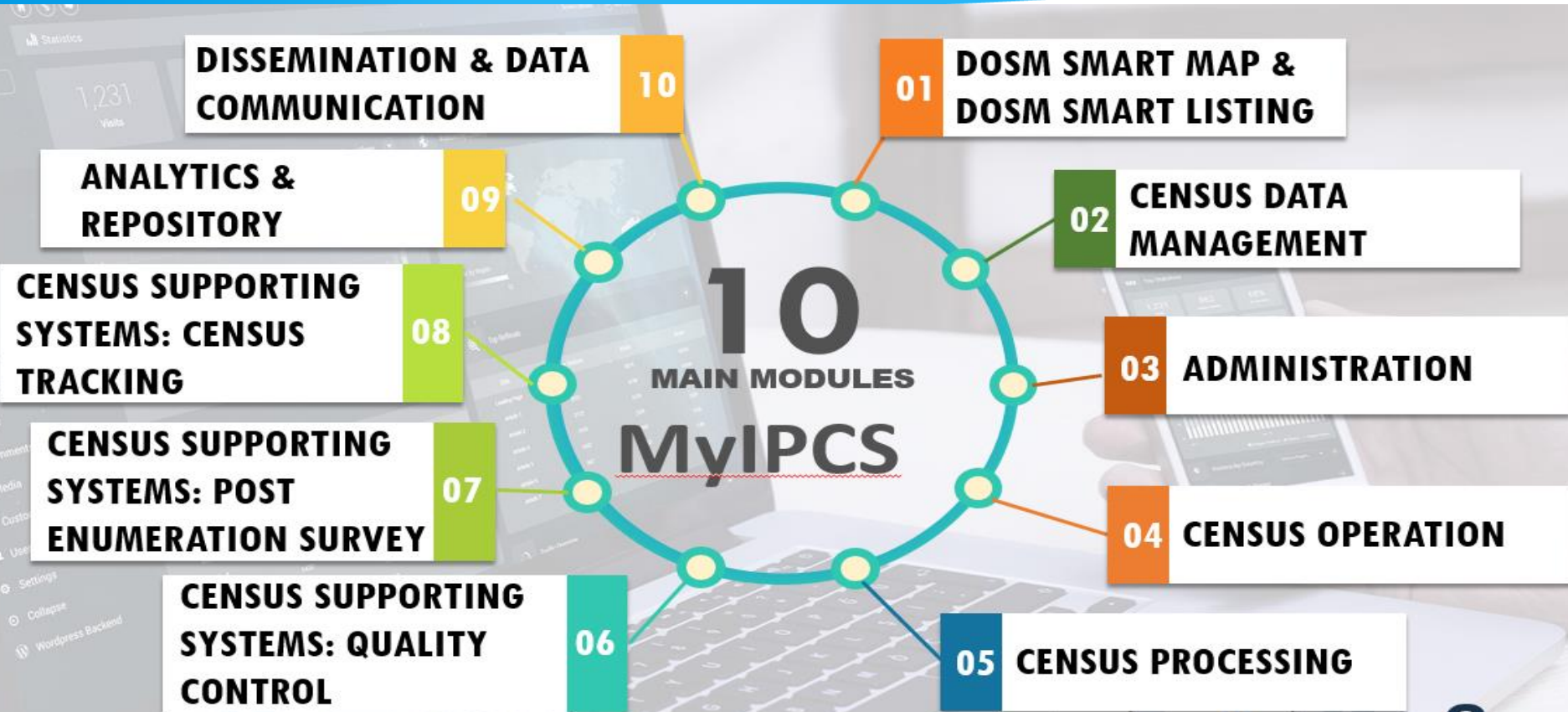
MyIPCS – MALAYSIA INTEGRATED POPULATION CENSUS SYSTEM



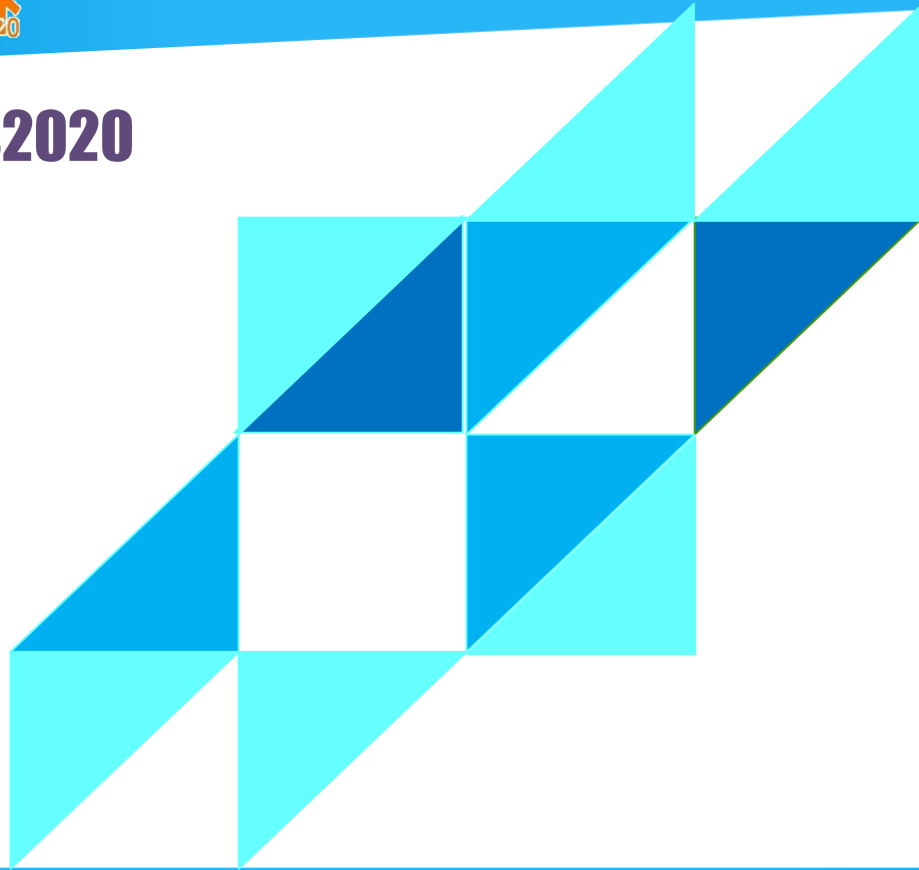
Principles and Recommendations for Population and Housing Census, Rev. 3

Generic Statistical Business Process Model (GSBPM)

MyIPCS: MODULES



#MyCensus2020



5

**OUTCOMES
BENEFIT BEYOND
CENSUS 2020**

LESSONS LEARNED FROM CENSUS 2010 IMPLEMENTATION

Issue/Challenge	Suggestions
Planning and Preparation	
Questionnaire is too complex and contained too many variables to be responded.	The use of administrative data from other government agencies will complement the existing data sources
Non-Integrated Database and process. All the activities lead to data redundancies and inconsistencies	Centralized database and data preparation before census will maximize data integrity, enhance data reliability and reduce redundancies
Census 2010 framework is based on household listing obtained from fieldwork. ID for building unit (BU) and Living Quarters (LQ) generated are based on the statistical boundary code	Generate a unique and permanent ID for all addresses in Malaysia. Address ID can detect area in which state/city/section it resides in. ID should be standardized for all administrative agency

LESSONS LEARNED FROM CENSUS 2010 IMPLEMENTATION

Issue/Challenge	Suggestions
Operation and Data Process	
Sudden resignation of a Census Enumerator or Supervisor, termination of a Census Enumerator or Supervisor for underperforming of his/her tasks, limited qualified candidates.	Human resources availability will be addressed by engaging available university students on break, and existing public service officials
Training issues and the inability of trainers to conduct the required training as per the guideline.	Comprehensive training that will be conducted through training videos, and latest ICT technology
eCensus response rate was less than 1%	eCensus will be expanded in 2020, with efficient house code ID system, improved and capable ICT infrastructure, and extensive publicity
Questionnaire form data capture was inadequate due to incomplete and illegible forms, poor form conditions	Use of latest variety of tools for data capture such as tablet computer during interviews, simplified questionnaire forms, sufficient editing and review



1 NEW STATISTICAL INFORMATION

- The basis information for national planning and development
- Population information, household and living quarters to the smallest geographic area (local statistics)



2 REGISTER BASED STATISTICS (MSAR & MSPR)

- Complete LQ and population address database
- The Population and Housing Census can be implemented on a smaller scale in the future



3 STATISTICS LANDSCAPE TRANSFORMATION

- Technology change from paper-based to online
- Improve the efficiency of statistical delivery systems to be more modern, dynamic and user-friendly
- Improve the statistical literacy



4

CENSUS PARAMETER SHARING

- Up-to-date data from MSAR & MSPR can be shared with various agencies (aggregate data).
- Cooperation with other Government Agencies (OGA) in the use of administrative data can be enhanced



5

ESTIMATES AND PROJECTION OF POPULATION, HOUSEHOLDS AND LIVING QUARTERS

- Population input for the establishment of key national policy



6

COST EFFECTIVE

- Long term investments
- Continuous ICT improvements
- Cost effective for future



Welcoming 62nd ISI WORLD STATISTICS CONGRESS 2019



18 - 23 OGOS 2019 | KUALA LUMPUR

Thank You

