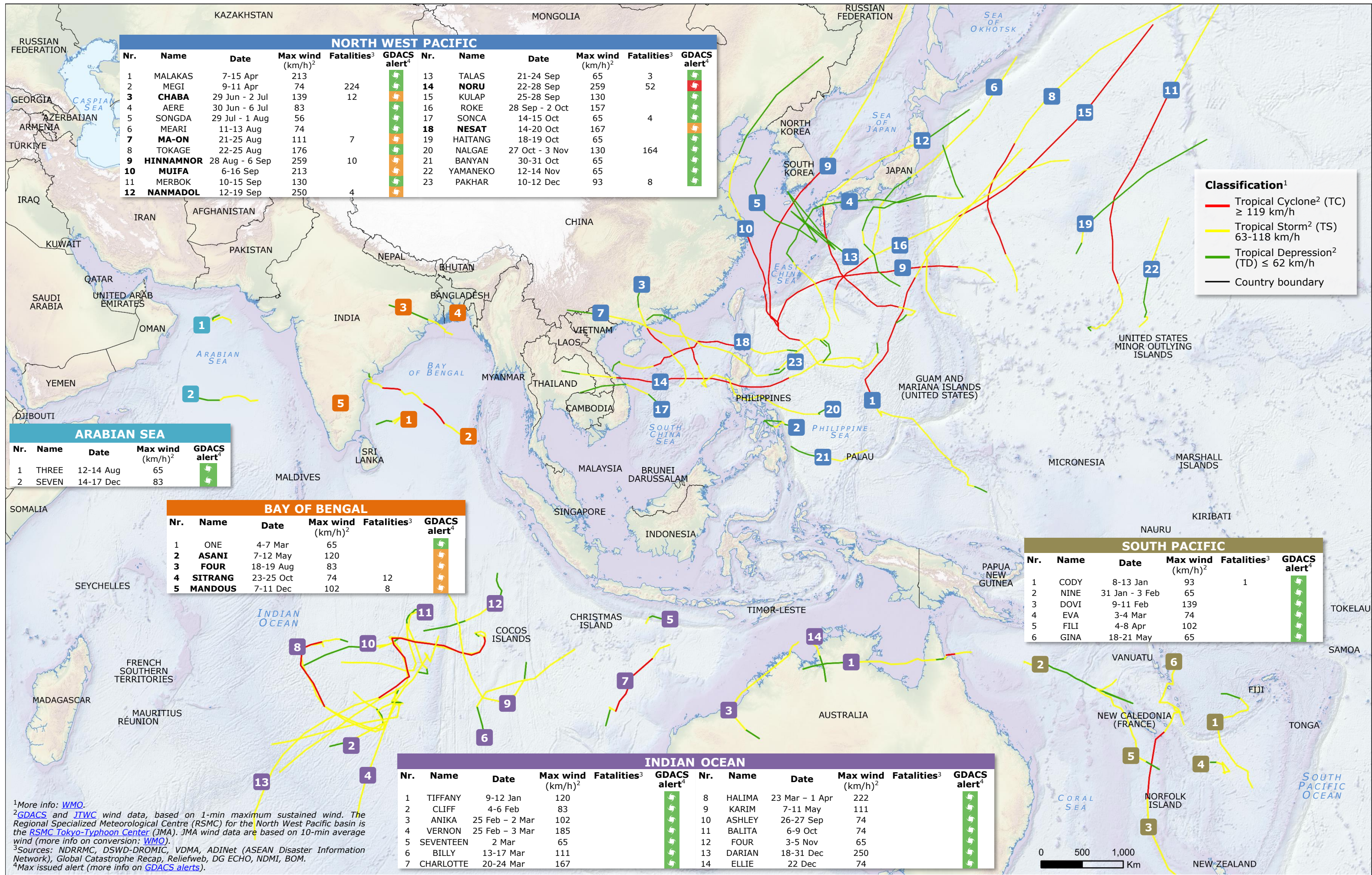


# Asia Pacific – Tropical Cyclone Season 2022



<sup>1</sup>More info: [WMO](https://www.wmo.int).  
<sup>2</sup>GDACS and JTWC wind data, based on 1-min maximum sustained wind. The Regional Specialized Meteorological Centre (RSMC) for the North West Pacific basin is the RSMC Tokyo-Typhoon Center (JMA). JMA wind data are based on 10-min average wind (more info on conversion: [WMO](https://www.wmo.int)).  
<sup>3</sup>Sources: NDRRMC, DSWD-DROMIC, VDMA, ADINet (ASEAN Disaster Information Network), Global Catastrophe Recap, Reliefweb, DG ECHO, NDMI, BOM.  
<sup>4</sup>Max issued alert (more info on [GDACS alerts](https://www.wmo.int)).