



# JUST

BUYER'S GUIDE 2025



FIN S



FINS

JUST PRODUCTS HAVE BEEN DESIGNED WITH THE DESIRE TO OFFER EFFECTIVE SURF ACCESORIES TO EVERYONE.

2+1  
FINS

4"5 | 6"0 | 6"5

- ONLY IN SMOKE TINT
- 3 TEMPLATES
- RAW FINISH
- EASY DRIVE SCREW



SKU : LGB\_45\_smoke



SKU : LGB\_60\_smoke



SKU : LGB\_65\_smoke



## LONGBOARD FINS 7"0 DOLPHIN

- 6 COLORS
- RAW FINISH
- EASY DRIVE SCREW



SKU : LGB\_70\_black



SKU : LGB\_70\_smoke



SKU : LGB\_70\_clear



SKU : LGB\_70\_blue



SKU : LGB\_70\_oldgreen



SKU : LGB\_70\_smoketogold



## LONGBOARD FINS 7"5 CALIFORNIA CLASSIC

- 5 COLORS + 1 GRAPHIC
- RAW FINISH
- EASY DRIVE SCREW



SKU : LGB\_75\_black



SKU : LGB\_75\_smoke



SKU : LGB\_75\_clear



SKU : LGB\_75\_pink



SKU : LGB\_75\_gold



SKU : LGB\_75\_balea



## LONGBOARD FINS 8"0 PERFORMANCE

- 5 COLORS
- RAW FINISH
- EASY DRIVE SCREW



SKU : LGB\_80\_black



SKU : LGB\_80\_smoke



SKU : LGB\_80\_clear



SKU : LGB\_80\_red



SKU : LGB\_80\_smoketogold



## LONGBOARD FINS 8"5 CLASSIC SINGLE

- 5 COLORS
- RAW FINISH
- EASY DRIVE SCREW



SKU : LGB\_85\_black



SKU : LGB\_85\_smoke



SKU : LGB\_85\_clear



SKU : LGB\_85\_blue



SKU : LGB\_85\_gold

## LONGBOARD FINS 8"75 WHIP

- 3 COLORS
- RAW FINISH
- EASY DRIVE SCREW



SKU : LGB\_875\_black



SKU : LGB\_875\_smoke



SKU : LGB\_875\_clear

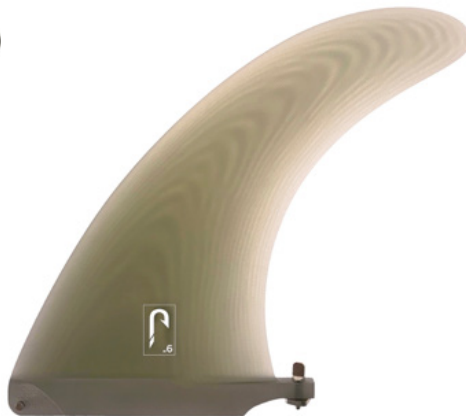


## LONGBOARD FINS 9"0 EASY PIVOT

- 6 COLORS + 1 GRAPHIC
- RAW FINISH
- EASY DRIVE SCREW



SKU : LGB\_90\_black



SKU : LGB\_90\_smoke



SKU : LGB\_90\_clear



SKU : LGB\_90\_oldgreen



SKU : LGB\_90\_red



SKU : LGB\_90\_pink



SKU : LGB\_90\_phare



## LONGBOARD FINS 9"25 HERITAGE

- 3 COLORS
- RAW FINISH
- EASY DRIVE SCREW



SKU : LGB\_925\_black



SKU : LGB\_925\_smoke



SKU : LGB\_925\_clear

## LONGBOARD FINS 9"75 RAKE

- 5 COLORS + 1 GRAPHIC
- RAW FINISH
- EASY DRIVE SCREW



SKU : LGB\_975\_black



SKU : LGB\_975\_gold



SKU : LGB\_975\_green



SKU : LGB\_975\_purple



SKU : LGB\_975\_red



SKU : LGB\_975\_belza



### THRUSTER FINS

---

- HIGH QUALITY PLASTIC MIX WITH 50% FIBERGLASS.
- LIGHT WEIGHT
- EXCELLENT MECHANICAL STRENGTH
- EXCELLENT IMPACT RESISTANCE
- TO BE USED WITH FCS OR COMPATIBLE FINS SYSTEMS.
- AN ALL AROUND TEMPLATE FOR ANY SURFER



SKU : JUSTF\_DT\_W\_M



SKU : JUSTF\_DT\_B\_M



SKU : JUSTF\_DT\_W\_L



SKU : JUSTF\_DT\_B\_L



LEASHES

## PREMIUM LEASH

- DOUBLE SWIVEL TO PREVENT IT FROM TWISTING ON ITSELF
- A THICK NEOPRENE STRAP FOR MORE COMFORT AROUND YOUR ANKLE
- A WIDE «RAIL SAVER» FOR BETTER PROTECTION OF YOUR BOARD
- A RELIABLE HANGING SYSTEM WITH ITS HIGH DENSITY VELCRO® STRIP
- NO KEY POCKET OR OTHER UNNECESSARY GADGETS



**The new Premium Just** with double stainless swivels have a new look. The quality components, materials as well as careful assembly give it comfort and robustness for safer sessions. An ideal leash for all conditions.

## PREMIUM LEASH 6'0 REGULAR

- DIAMETER OF THE URETHANE ROPE: 7MM
- DOUBLE 8MM STAINLESS STEEL SWIVEL
- ANKLE STRAP PADDED WITH NEOPRENE, FOR MORE COMFORT
- EXTRA STRONG HIGH DENSITY VELCRO®
- RESISTANT SEAMS
- LARGE UNHOOKING LOOP ON ANKLE STRAP
- WIDE RAILSAYER WITH TRIPLE VELCRO® FASTENING

Leash surf Premium  
Regular 6'0'' x 7mm



SKU : JUSTLR6\_BLACK

Leash surf Premium  
Regular 6'0'' x 7mm



SKU : JUSTLR6\_BLUE

Leash surf Premium  
Regular 6'0'' x 7mm



SKU : JUSTLR6\_CREAM

Leash surf Premium  
Regular 6'0'' x 7mm



SKU : JUSTLR6\_GREEN

Leash surf Premium  
Regular 6'0'' x 7mm



SKU : JUSTLR6\_SILVER

## PREMIUM LEASH 7'0 REGULAR

- DIAMETER OF THE URETHANE ROPE: 7MM
- DOUBLE 8MM STAINLESS STEEL SWIVEL
- ANKLE STRAP PADDED WITH NEOPRENE, FOR MORE COMFORT
- EXTRA STRONG HIGH DENSITY VELCRO®
- RESISTANT SEAMS
- LARGE UNHOOKING LOOP ON ANKLE STRAP
- WIDE RAILSAYER WITH TRIPLE VELCRO® FASTENING

Leash surf Premium  
Regular 7'0'' x 7mm



SKU : JUSTLR7\_BLACK

Leash surf Premium  
Regular 7'0'' x 7mm



SKU : JUSTLR7\_BLUE

Leash surf Premium  
Regular 7'0'' x 7mm



SKU : JUSTLR7\_CREAM

Leash surf Premium  
Regular 7'0'' x 7mm



SKU : JUSTLR7\_GREEN

Leash surf Premium  
Regular 7'0'' x 7mm



SKU : JUSTLR7\_SILVER



## PREMIUM LEASH 8'0 REGULAR

- DIAMETER OF THE URETHANE ROPE: 7MM
- DOUBLE 8MM STAINLESS STEEL SWIVEL
- ANKLE STRAP PADDED WITH NEOPRENE, FOR MORE COMFORT
- EXTRA STRONG HIGH DENSITY VELCRO®
- RESISTANT SEAMS
- LARGE UNHOOKING LOOP ON ANKLE STRAP
- WIDE RAILSAYER WITH TRIPLE VELCRO® FASTENING

Leash surf Premium  
Regular 8'0'' x 7mm



SKU : JUSTLR8\_BLACK

Leash surf Premium  
Regular 8'0'' x 7mm



SKU : JUSTLR8\_BLUE

Leash surf Premium  
Regular 8'0'' x 7mm



SKU : JUSTLR8\_CREAM

Leash surf Premium  
Regular 8'0'' x 7mm



SKU : JUSTLR8\_GREEN

Leash surf Premium  
Regular 8'0'' x 7mm



SKU : JUSTLR8\_SILVER

## PREMIUM LEASH 9'0" REGULAR KNEE

- DIAMETER OF THE URETHANE ROPE: 7MM
- DOUBLE 8MM STAINLESS STEEL SWIVEL
- ANKLE STRAP PADDED WITH NEOPRENE, FOR MORE COMFORT
- EXTRA STRONG HIGH DENSITY VELCRO®
- RESISTANT SEAMS
- LARGE UNHOOKING LOOP ON KNEE STRAP
- WIDE RAILSAYER WITH TRIPLE VELCRO® FASTENING

Leash surf Premium  
Regular Knee 9'0" x 7mm



SKU : JUSTLR9\_BLACK

Leash surf Premium  
Regular Knee 9'0" x 7mm



SKU : JUSTLR9\_BLUE

Leash surf Premium  
Regular Knee 9'0" x 7mm



SKU : JUSTLR9\_CREAM

Leash surf Premium  
Regular Knee 9'0" x 7mm



SKU : JUSTLR9\_GREEN

Leash surf Premium  
Regular Knee 9'0" x 7mm



SKU : JUSTLR9\_SILVER

## COMP/GROM LEASH 6'0 COMP

- DIAMETER: 6MM
- DOUBLE SWIVEL IN BLACK STAINLESS STEEL
- INTERNAL COATING OF THE NON-SLIP STRAP - JUST MONOGRAM
- RUGGED HYPALON PULLER LOOP - PREMIUM FORMULA
- RAILSAYER IN HYPALON: PREMIUM FORMULA
- MOLDED FLEXIBLE CONNECTIONS - PREMIUM FORMULA



Leash surf Premium  
Comp 6'0" x 6 mm



SKU : JUSTLC6\_BLACK

**The new Comp Premium 6'0 JUST leash** with double stainless swivels comes in a brand new live-ry. Its Hypalon strap and saver rail combined with the quality of the components, materials and careful assembly give it comfort, lightness and robustness for sessions with confidence.

An ideal leash for all conditions for everyday use.



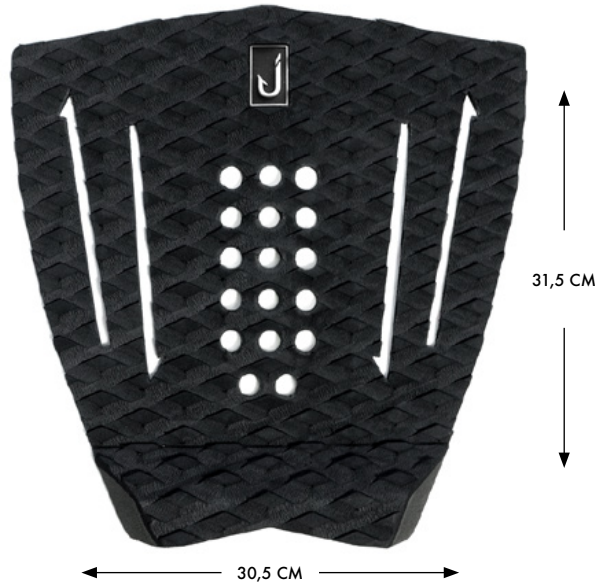
PADS

## TRACTION PADS 1 PIECE

- LIGHTWEIGHT PREMIUM EVA
- DIAMOND-BLOCK TRACTION PATTERN FOR EXTRA GRIP
- 6MM TEAR-DROP ARCH
- 28MM RAMP KICK
- 3M ADHESIVE BACKING.



SKU : JUSTP\_1\_BLACK

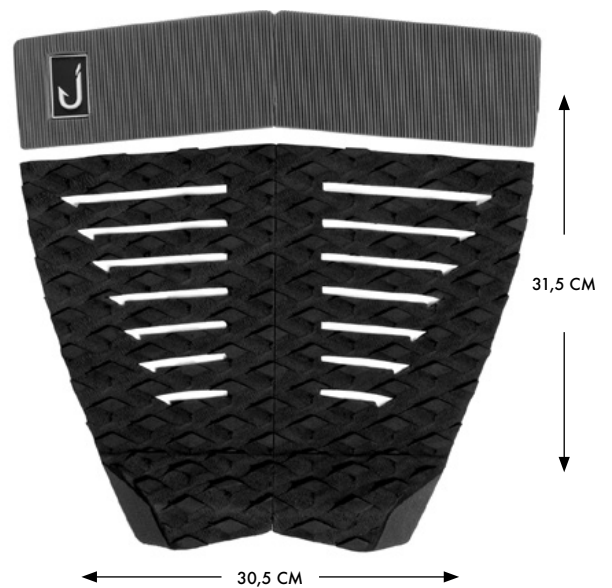


## TRACTION PADS 4 PIECES

- LIGHTWEIGHT PREMIUM EVA
- DIAMOND-BLOCK TRACTION PATTERN FOR EXTRA GRIP
- 6MM TEAR-DROP ARCH
- 28MM RAMP KICK
- 3M ADHESIVE BACKING.



SKU : JUSTP\_4\_BLACK

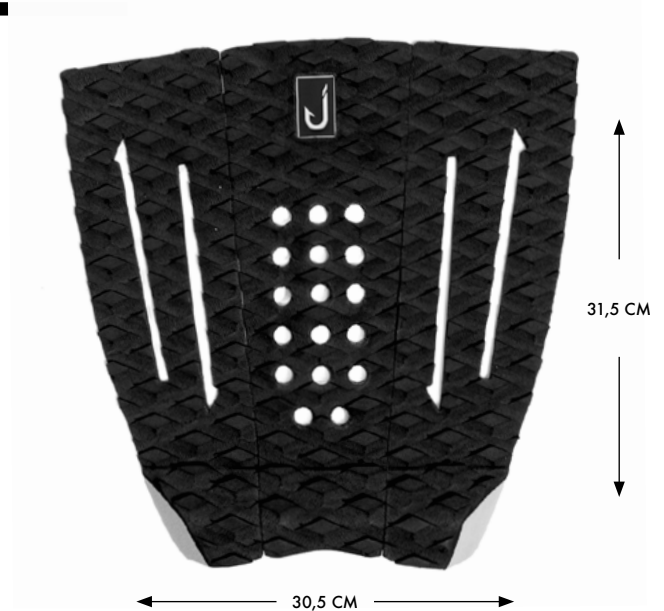


## TRACTION PADS 3 PIECES

- LIGHTWEIGHT PREMIUM EVA
- DIAMOND-BLOCK TRACTION PATTERN FOR EXTRA GRIP
- 6MM TEAR-DROP ARCH
- 28MM RAMP KICK
- 3M ADHESIVE BACKING.



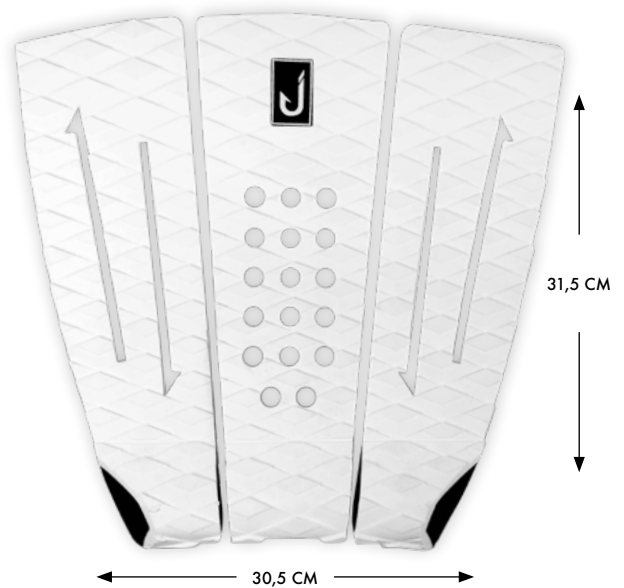
SKU : JUSTP\_3\_BLACK



## TRACTION PADS 3 PIECES

- LIGHTWEIGHT PREMIUM EVA
- DIAMOND-BLOCK TRACTION PATTERN FOR EXTRA GRIP
- 6MM TEAR-DROP ARCH
- 28MM RAMP KICK
- 3M ADHESIVE BACKING.

SKU : JUSTP\_3\_WHITE

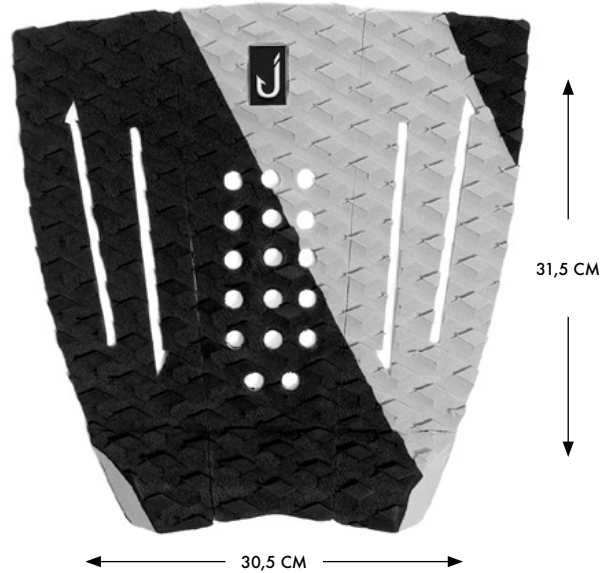


## TRACTION PADS 3 PIECES

- LIGHTWEIGHT PREMIUM EVA
- DIAMOND-BLOCK TRACTION PATTERN FOR EXTRA GRIP
- 6MM TEAR-DROP ARCH
- 28MM RAMP KICK
- 3M ADHESIVE BACKING.



SKU : JUSTP\_3\_B\_TO\_W

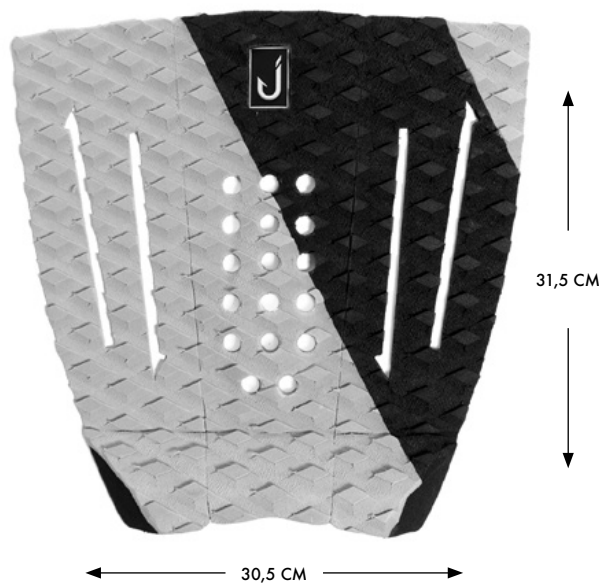


## TRACTION PADS 3 PIECES

- LIGHTWEIGHT PREMIUM EVA
- DIAMOND-BLOCK TRACTION PATTERN FOR EXTRA GRIP
- 6MM TEAR-DROP ARCH
- 28MM RAMP KICK
- 3M ADHESIVE BACKING.



SKU : JUSTP\_3\_W\_TO\_B

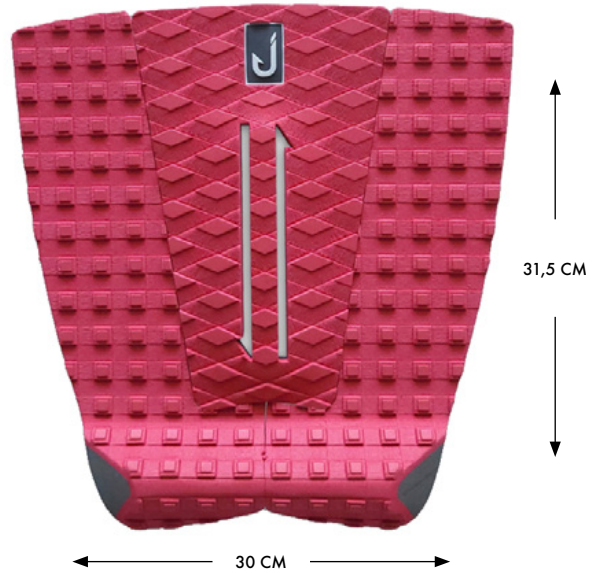


## TRACTION PADS 3 PIECES

- LIGHTWEIGHT PREMIUM EVA
- DIAMOND & SQUARE-BLOCK TRACTION PATTERN FOR EXTRA GRIP
- 7MM ARCH
- 28MM RAMP KICK
- 3M ADHESIVE BACKING.

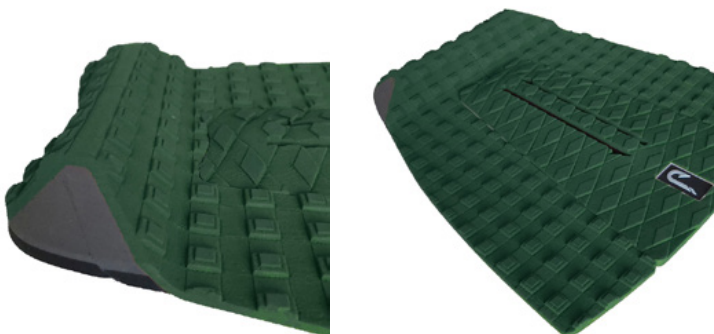


SKU : JUSTP\_3\_BURGUNDY

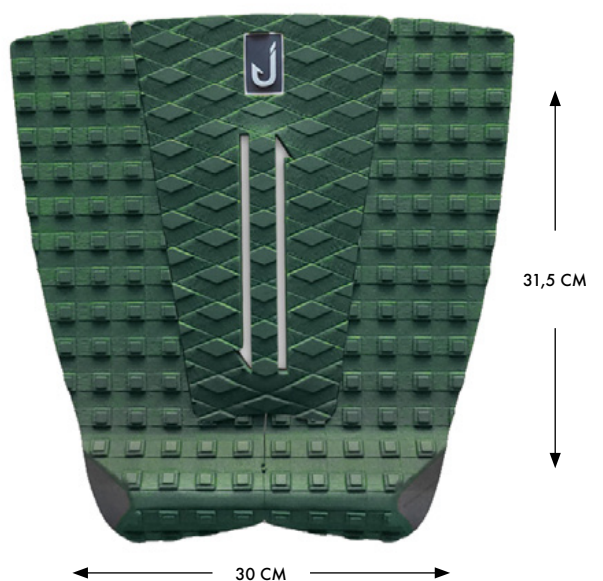


## TRACTION PADS 3 PIECES

- LIGHTWEIGHT PREMIUM EVA
- DIAMOND & SQUARE-BLOCK TRACTION PATTERN FOR EXTRA GRIP
- 7MM ARCH
- 28MM RAMP KICK
- 3M ADHESIVE BACKING.



SKU : JUSTP\_3\_GREEN





## TRACTION PADS 3 PIECES - ROUND

- LIGHTWEIGHT PREMIUM EVA
- DIAMOND & SQUARE-BLOCK TRACTION PATTERN FOR EXTRA GRIP
- 8MM ARCH
- 28MM RAMP KICK
- 3M ADHESIVE BACKING.



SKU : JUSTP\_3\_ROUND

## TRACTION PADS 3 PIECES - GROM

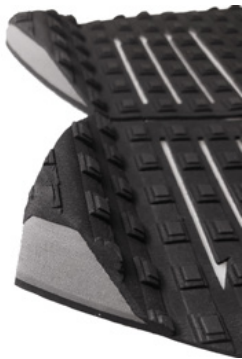
- LIGHTWEIGHT PREMIUM EVA
- DIAMOND & SQUARE-BLOCK TRACTION PATTERN FOR EXTRA GRIP
- 8MM ARCH
- 26MM RAMP KICK
- 3M ADHESIVE BACKING.



SKU : JUSTP\_3\_GROM

## TRACTION PADS 2 PIECES - FISH

- LIGHTWEIGHT PREMIUM EVA
- SQUARE-BLOCK TRACTION PATTERN FOR EXTRA GRIP
- NO ARCH
- 28MM RAMP KICK
- 3M ADHESIVE BACKING.



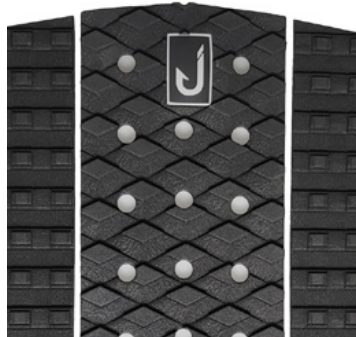
34 CM

34 CM

SKU : JUSTP\_2\_FISH

## TRACTION PADS 3 PIECES - FRONT

- LIGHTWEIGHT PREMIUM EVA
- DIAMOND & SQUARE-BLOCK TRACTION PATTERN FOR EXTRA GRIP
- FLAT
- 3M ADHESIVE BACKING.



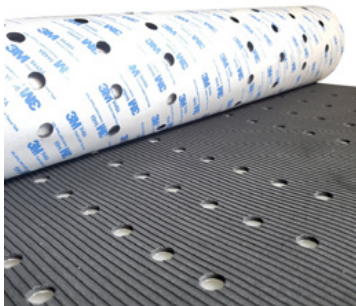
34,5 CM

30,5 CM

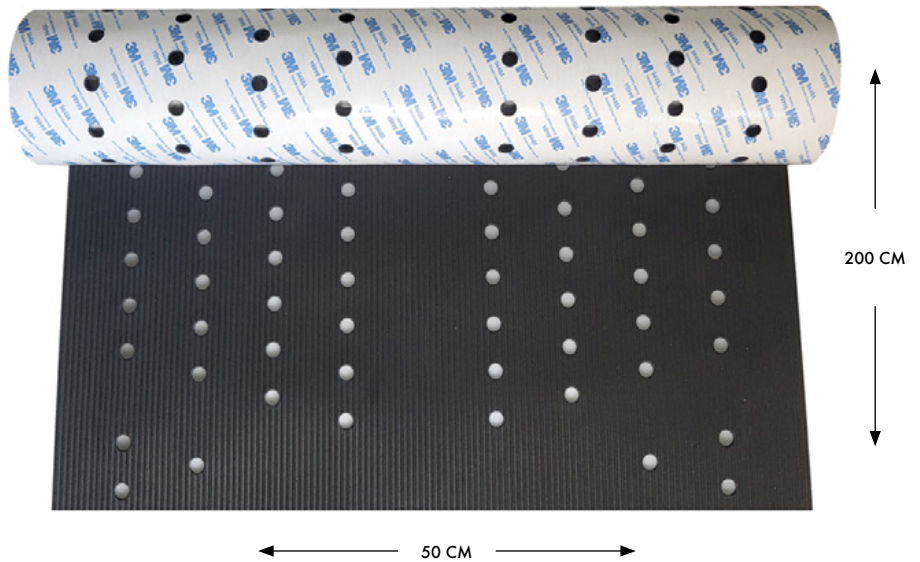
SKU : JUSTP\_3\_FRONT

## TRACTION PADS 1 PIECE - ROLL

- LIGHTWEIGHT PREMIUM EVA
- 2 X 2 MM GROOVES
- DIMENSIONS : 200 CM X 50 CM
- 3M ADHESIVE BACKING.



SKU : JUSTP\_ROLL





COVERS

## DAYLIGHT COVERS 5'6 TO 10'2

- WATERPROOF HEX 420 D RIP-STOP SHELL
- BREATHABLE AND EXPANDABLE CENTRAL PART
- CORROSION PROOF ZIPPER
- PROTECTIVE NOSE PIECE
- EXPANDABLE TAIL GUSSET FOR FINS
- REMOVABLE ERGONOMIC SHOULDER STRAP



Waterproof Hex 420 D rip-stop shell



Corrosion proof zipper



Removable shoulder strap



Expandable tail gusset for fins

## DAYLIGHT COVERS 5'6 TO 10'2

- WATERPROOF HEX 420 D RIP-STOP SHELL
- BREATHABLE AND EXPANDABLE CENTRAL PART
- CORROSION PROOF ZIPPER
- PROTECTIVE NOSE PIECE
- EXPANDABLE TAIL GUSSET FOR FINS
- REMOVABLE ERGONOMIC SHOULDER STRAP

DAYLIGHT SHORTBOARD COVER



SKU : JUSTC\_56\_short  
SKU : JUSTC\_59\_short  
SKU : JUSTC\_60\_short  
SKU : JUSTC\_63\_short  
SKU : JUSTC\_67\_short

DAYLIGHT FUNBOARD COVER



SKU : JUSTC\_60\_fun  
SKU : JUSTC\_63\_fun  
SKU : JUSTC\_67\_fun  
SKU : JUSTC\_70\_fun  
SKU : JUSTC\_76\_fun  
SKU : JUSTC\_80\_fun

DAYLIGHT LONGBOARD COVER



SKU : JUSTC\_86\_long  
SKU : JUSTC\_90\_long  
SKU : JUSTC\_92\_long  
SKU : JUSTC\_96\_long  
SKU : JUSTC\_102\_long

## SOCK COVERS 5'8 TO 10'

- SUPER SOFT AND HEAVY STRETCH FABRIC
- REINFORCED FABRIC AT THE LOCATION OF THE FINS TO AVOID ANY PERFORATION OF THE COVER
- CLOSURE WITH DRAWSTRING WITH BARREL
- REUSABLE COMPRESSION BAG

SHORTBOARD SOCK COVER



SKU : JUSTC\_56\_short  
SKU : JUSTC\_59\_short  
SKU : JUSTC\_60\_short  
SKU : JUSTC\_63\_short  
SKU : JUSTC\_67\_short

FUNBOARD SOCK COVER



SKU : JUSTC\_60\_fun  
SKU : JUSTC\_63\_fun  
SKU : JUSTC\_67\_fun  
SKU : JUSTC\_70\_fun  
SKU : JUSTC\_76\_fun  
SKU : JUSTC\_80\_fun

LONGBOARD SOCK COVER



SKU : JUSTC\_86\_long  
SKU : JUSTC\_90\_long  
SKU : JUSTC\_92\_long  
SKU : JUSTC\_96\_long  
SKU : JUSTC\_102\_long



HARDWARE



## WALL HOOK SINGLE TAB

- MADE IN LIGHTWEIGHT BIO PLASTIC/3D PRINTED
- EASY TO INSTALL/USE
- COMPATIBLE WITH SINGLE TAB



SKU : PORTANT\_VERT\_FUTURES\_NOIR  
SKU : PORTANT\_VERT\_FUTURES\_BLANC



## WALL HOOK DUAL TAB

- MADE IN LIGHTWEIGHT BIO PLASTIC/3D PRINTED
- EASY TO INSTALL/USE
- COMPATIBLE WITH DUAL TAB



SKU : PORTANT\_VERT\_FCS\_NOIR  
SKU : PORTANT\_VERT\_FCS\_BLANC



## WALL RACK

- MADE IN LIGHTWEIGHT BIO PLASTIC/3D PRINTED
- EASY TO INSTALL/USE



SKU : PORTANT\_HORIZONTAL\_NOIR  
SKU : PORTANT\_HORIZONTAL\_BLANC



## VERTICAL HANGER

- MADE IN LIGHTWEIGHT BIO PLASTIC/3D PRINTED
- EASY TO INSTALL/USE
- PERFECT TO USE IN SHOPS
- COMPTIBLE WITH BOTH DUAL TAB / SINGLE TAB



SKU : CINTRE\_BOARD\_SHOP





# JUST

BUYER'S GUIDE 2025

## EUROPE

### **CÉDRIC**

M. +33 (0)6 68 64 70 18

@. CEDRIC@VIRALSURF.FR

## SOUTHWEST FRANCE

### **VALENTIN**

M. +33 (0)6 98 44 70 17

@. VALENTIN@VIRALSURF.FR

## NORTH FRANCE

### **ADRIEN**

M. +33(0) 6 98 96 88 04

@. ADRIEN@VIRALSURF.FR

## NORTH SPAIN

### **ARNAUD**

M. +33 (0)7 55 65 90 29

@. CEDRIC@VIRALSURF.FR

## ITALY

### **MARCO**

M. +39 328 9047238

@. MARCO@VIRALSURF.FR