

2024 - 2025 GREATER NEW HAVEN Visitors & Relocation Guide



Download
our App



apizza

[ah - BEETZ] noun

A spoken term originating from the Nation's Pizza Capital of New Haven, CT, referring to Neapolitan-style pizza.



**Grab
a
Slice!**



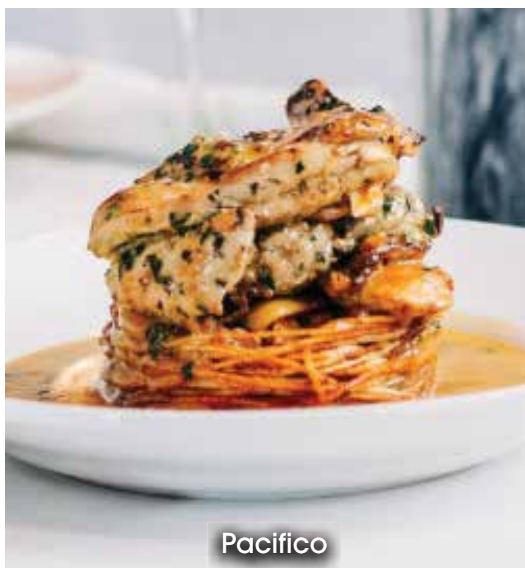
infonewhaven.com

  
[@infonewhaven](https://www.instagram.com/infonewhaven)

 **downtown
new haven**



Chapel Street Historic District



Pacifico

WHERE SHOPPING & DINING MEET CULTURE & EVENTS



Yale University Art Gallery



Public Events

The Shops at Yale

Apple • lululemon • J.Crew • Lou Lou Boutique • Urban Outfitters
idiom Boutique • Sneaker Junkies • Raggs for Men & Women
More Amour Boutique • Warby Parker • Derek Simpson Goldsmith
Villa Lulu • Harvest • Sherkaan Indian Street Food • Pacifico
Arethusa Farm Dairy • Claire's Corner Copia • Atticus • and more!

A unique collection of more than 65 boutiques, national brands, cafes, restaurants, and cultural attractions in historic Downtown New Haven. Plan your visit, including directions to convenient parking, at [TheShopsatYale.com](https://www.TheShopsatYale.com) [f](#) [@](#) [x](#)

You *belong* HERE.



Located just steps from the historic campus of Yale University and New Haven Town Green, Omni New Haven Hotel makes it easy to immerse yourself in all that the city has to offer. With elevated guest rooms, lobby, meeting rooms and public spaces, make your next getaway a truly exceptional experience.

OMNI
NEW HAVEN
AT YALE

OMNIHOTELS.COM/NEWHAVEN

Live | Work | Shop | Dine | Explore



BRANFORD

www.branford-ct.gov

(203) 315-5279



GUILFORD

www.guilfordct.gov

(203) 453-8071



**NORTH BRANFORD
& NORTHFORD**

www.northbranfordct.gov

(203) 484-1034



2024 - 2025

GREATER NEW HAVEN

Visitors & Relocation Guide

visitNewHaven.com

Visit **New Haven**

REX
DEVELOPMENT

SCRCOG
SOUTH CENTRAL REGIONAL
COUNCIL OF GOVERNMENTS

Published by the
Hartford Courant
PO Box 569
Hartford, CT 06141

The Greater New Haven Visitors
Guide is a publication of:

Rex Development/Visit
New Haven, PO Box 1576,
New Haven, CT 06506
203-777-8550
visitNewHaven.com

South Central Regional
Council of Governments,
127 Washington Ave., 4th Floor
West, North Haven, CT 06473

Production Manager:
Barbara Malmberg

For a full listing of
regional partners, go to
visitNewHaven.com

Cover Photo *Market New Haven*

-  **Region... 7**
-  **Arts... 9**
-  **History... 14**
-  **Best of Food & Drink... 18**
-  **Things To Do... 28**
-  **Annual Events... 32**
-  **Shopping... 38**
-  **Here, There & Everywhere... 41**
-  **Accommodations... 44**
-  **Relocation Guide... 47**
- Living in Greater New Haven... 49**
- Regional Economic Overview ...52**
- Flourishing Sectors ...56**
- Workforce ...62**
- Resources ...64**
-  **List of Advertisers... 66**

This guide is produced for information and the guidance of individuals seeking cultural assets or visiting the Greater New Haven area. Every effort has been made to compile this information as accurately as possible. Visit New Haven/REX Development does not assume responsibility for any errors or omissions. Please notify Visit New Haven/REX Development of any changes to the information presented here so it can be corrected in subsequent issues. Thank you.

In a global arena, discover the *New Haven* advantage.



- ▶ **Nationally recognized** for cultural equity and inclusion.
- ▶ **Affordable location** between New York and Boston.
- ▶ **Fastest growing economy** of any major Connecticut city.
- ▶ **Leading destination** in life science, quantum computing, craft food & social impact technology.

📍 **CITY:**
Connecticut's first Cultural Equity Plan.

📍 **R&D:**
Single-largest life-sciences cluster in CT, 4th-densest in the country.

💰 **VENTURE:**
3rd fastest growing US city for venture capital investment.

Justin Elicker, *Mayor*
To learn more, contact:
info@edcnewhaven.com

Top left photo courtesy of Market New Haven, Inc. and Full Send Productions.
newhavenct.gov #nhv @newhavened

**TOGETHER
NEW HAVEN**



Embrace the Authenticity and Flavor of Apizza in Greater New Haven

On National Pizza Day, Governor Ned Lamont declared Connecticut the “Pizza Capital of America” and that accolade could not be more fitting for Greater New Haven. New Haven-style pizza is a media darling, garnering the attention of the New York Times, Good Morning America, the New Yorker, Bloomberg, and Pizza Today. Proof of the power of pizza, each of the 15 towns in the region is home to at least one pizza parlor offering a variety of pie styles.

Apizza has captured the hearts and palates of locals and visitors alike. Pronounced “ah-beetz” by aficionados, apizza represents more than just a style of pizza—it’s a beloved tradition, a culinary heritage, and a testament to the rich Italian-American influence that permeates the region. From its humble origins to its status as a cultural icon, apizza continues to reign supreme in Greater New Haven, offering a truly authentic and unforgettable dining experience. From the historic pizzerias that have been serving up pizza for generations to the innovative newcomers putting their own spin on tradition, there’s no shortage of options to satisfy your pizza cravings.

What sets apizza apart from its better-known counterparts is its distinct style and preparation. Characterized by a thin, crispy crust, slightly charred edges, and a minimalist approach to toppings, apizza emphasizes simplicity and quality ingredients above all else.

The hallmark of true apizza lies in its delicate balance of flavors—the tangy tomato sauce, the creamy mozzarella cheese, and perhaps a sprinkling of grated Pecorino Romano or a drizzle of extra-virgin olive oil—all coming together to create a symphony of taste that is both comforting and indulgent.

One of the most iconic destinations for apizza is Wooster St. in New Haven. Home to Frank Pepe Pizzeria Napoletana, Sally’s Apizza, and Zeneli’s. Pepe’s was founded in 1925 by Italian immigrant Frank Pepe, and this legendary establishment has become synonymous with apizza excellence, drawing pizza enthusiasts from near and far to savor its signature pies, including the renowned White Clam Pizza—a delectable combination of fresh clams, garlic, olive oil, and grated cheese atop a perfectly blistered crust.

But Pepe’s is just one of many revered apizza joints in the region. Zuppardi’s, Modern Apizza, and Bar are among the other venerable institutions that have contributed to the region’s apizza legacy, each offering its own unique take on this beloved dish. Whether you prefer your apizza topped with traditional ingredients like pepperoni and sausage or crave something more adventurous like clams or mashed potato, you’ll find no shortage of options to satisfy your pizza cravings in Greater New Haven.

THEATRE ← → IS FOR EVERYONE ←

**LONG
WHARF**
THEATRE

LONGWHARF.ORG



BEST OF Hartford MAGAZINE 2019 WINNER
BEST OF Hartford MAGAZINE 2020 WINNER
BEST OF Hartford MAGAZINE 2021 WINNER
BEST OF Hartford MAGAZINE 2022 WINNER
BEST OF Hartford MAGAZINE 2023 WINNER

2016 WINNER
2017 WINNER
2018 WINNER



Connecticut
Science Center



CTScienceCenter.org | 250 Columbus Blvd., Hartford, CT



Discover Art and Culture in Greater New Haven

View of the modern and contemporary art galleries, Yale University Art Gallery. Photo: Jessica Smolinski

Welcome to vibrant and culturally rich Greater New Haven, a true hub of art that caters to every taste and preference. As the proud home of **Yale University**, we are privileged to have access to world-class collections often made available to the public free of charge. These collections comprise millions of paintings, sculptures, coins, books, and manuscripts that are sure to leave you awe-inspired.

For a truly exceptional experience, we recommend starting your art journey at the **Yale University Art Gallery**. The gallery showcases an impressive selection of paintings and sculptures by iconic artists like Josef Albers, Edgar Degas, Joan Miró, Piet Mondrian, Pablo Picasso, Mark Rothko, and Roy Lichtenstein, to name a few. Additionally, smaller galleries throughout the region offer a diverse range of locally created paintings, pottery, sculpture, and jewelry. The **Yale Center for British Art** is undergoing renovation and will reopen to visitors in 2025.

You can also look forward to annual events celebrating art and its profound impact on our lives. The **International Festival of Arts & Ideas**, a two-week extravaganza held in June, brings together artists from around the world

to showcase their talents. The theme of the 2024 festival is “Be the Change. Be Changed.” and will continue to feature free musical headliners on the New Haven Green. In July, the **Guilford Art Center** hosts Craft Expo, a must-attend event that showcases the works of 180 nationally recognized American artists.

Theater in Greater New Haven is equally diverse, ranging from traditional to avant-garde. The **Shubert Theatre** is renowned for its Broadway hits and special events. **Long Wharf Theatre**, now an itinerant theater, brings performances throughout the city, while the **Yale Repertory Theatre** produces many original plays that explore contemporary themes.

Music enthusiasts can enjoy live performances by the **New Haven Symphony Orchestra** or rock out at the **Westville Music Bowl** or **College Street Music Hall**.

We invite you to experience the art and culture of Greater New Haven, a place where creativity knows no bounds. Come and immerse yourself in the beauty and diversity of our vibrant community.



Arts

MUSEUM/GALLERY

Blessed Michael McGivney Pilgrimage Center, 1 State St., New Haven. The Michael McGivney Pilgrimage Center showcases the life and legacy of Father McGivney. The priest, who is being considered for sainthood in the Catholic Church, established the Knights of Columbus more than a century ago. Free. 203-865-0400, michaelmcgivneycenter.org

Ely Center of Contemporary Art, 51 Trumbull St., New Haven. Presents contemporary art exhibitions and events—challenging, conceptual, and provocative—that are inclusive, diverse, and promote dialogue around global and community issues. 203-507-7320, elycenter.org

Guilford Art Center, 411 Church St., Guilford. Non-profit school, shop, and gallery. Classes and workshops in blacksmithing, ceramics, fiber arts, glass, metalsmithing, painting, photography, stone carving, weaving, and more for adults and children. The gallery presents juried and invitational exhibits. The shop carries fine American crafts by American artists. Tuition is charged per class; entry to the gallery and shop is free. 203-453-5947, guilfordart-center.org

Morris Steinert Collection of Musical Instruments at Yale, 15 Hillhouse Ave., New Haven. The Collection is home to hundreds of musical instruments from antiquity to the present. We offer three galleries, an audio tour, and an annual series of concerts. 203-432-0822, music.yale.edu/collection

NXTHVN, 169 Henry St., New Haven. NXTHVN is a new national arts model, founded by Titus Kaphar, Jason Price, and Jonathan Brand, that empowers artists and curators through education and access to a vibrant ecosystem. The gallery presents several exhibitions each year. nxthvn.com

Palestine Museum, 1764 Litchfield Turnpike, Woodbridge. The museum preserves Palestinian history, showcases the Palestinian experience, and shares the Palestinian story with the U.S. and global audiences through works of art, film, literature, and mixed media. 203-530-2248, palestinemuseum.us

Yale Center for British Art, 1080 Chapel St., New Haven. The Yale Center for British Art is closed through 2024 for building conservation. 203-432-2800, britishart.yale.edu

Yale University Art Gallery, 1111 Chapel St., New Haven. Yale University Art Gallery is the oldest college art museum in America. The Gallery's encyclopedic holdings, 300,000 objects, range from ancient times to the present day and represent civilizations from around the globe. Free and open to the public. Closed Monday. 203-432-0600, artgallery.yale.edu



New to the Area?

HAVE A HOUSEWARMING GIFT FROM THE J

New to the area? Present this advertisement at our welcome desk upon signing up for a membership to receive a complimentary focused massage (30 min), a personal training session, or a \$50 Cafe J gift card.*

Register Today!



Scan here to get started

Visit jccnh.org or call:
(203) 387-2424 x0

*Must present this ad at the welcome desk. Limit 1 complimentary gift per membership. New members only & must commit to 3 months of membership. Cannot be combined with other offers.



THEATER/MUSIC/DANCE

John Lyman Center for the Performing Arts, Southern Connecticut State University, 501 Crescent St., New Haven. John Lyman Center for the Performing Arts features two performance spaces and a lobby art gallery. The season's highlights include headliners and the Jazz Series. 203-392-6154, lymancenter.org

Legacy Theatre, 128 Thimble Island Rd., Branford. The Legacy Theatre is a professional theatre company that offers seasonal performances and educational opportunities. 203-315-1901, legacytheatret.org

Long Wharf Theatre, Various locations, New Haven. Long Wharf Theatre is a creative environment for storytelling that amplifies lived experiences and celebrates our kaleidoscopic world. Consciously inclusive, Long Wharf Theatre produces accessible and boundary-breaking theatre while learning from, and being inspired by, our community—both on and offstage. 203-787-4282, longwharf.org

Milford Arts Council (The MAC), 40 Railroad Ave. South, Milford. A visual and performing arts venue right on the Metro North train line at a repurposed train station, surrounded by numerous dining and shopping destinations. The MAC provides a unique setting for live music, theatre, dance, film, art exhibits, and more. As the heart of the arts, we're about intimate, special, and memorable offerings. 203-878-6647, milfordarts.org

New Haven Symphony Orchestra, 4 Hamilton St., New Haven. The mission of the New Haven Symphony Orchestra is to increase the impact and value of orchestral music for our audiences through high-quality, affordable performances and educational programming. 203-865-0831, newhavensymphony.org

Shubert Theatre, 247 College St., New Haven. The Shubert brings the best of the performing arts to its legendary stage. Best known for its Broadway shows, the theatre presents a variety of performing arts, including solo artists, family-friendly shows, dance, comedy, and more, as well as offering educational and engagement programs that provide access to all members of our community. 203-562-5666, shubert.com

See Nightlife for additional venues on pages 30.

PUBLIC ART

Felice Varini's "Square with four circles", 1 Temple St. New Haven. A 110 foot-tall, anamorphic wall mural created by internationally-acclaimed artist, Felice Varini in 2010. The mural is designed in a way that, depending on the observer's viewpoint, it can be seen as a collection of three-dimensional painted shapes or as disconnected segments of shapes spread across several structures. Free. siteprojects.org/felice-varini-square-with-four-circles-new-haven-2010

Public Art in Downtown NHV, New Haven. An interactive map of downtown New Haven's public art sites created by the Town Green Special Services District. downtownnewhaven.com/publicart

Public Art at Yale, start at Old Campus, College Street. Includes statue of Revolutionary War hero Nathan Hale and Maya Lin's The Women's Table. visitorcenter.yale.edu/tours/public-art-yale

GUILFORD ART CENTER

SCHOOL

Creating Art & Community

SHOP

GALLERY

411 Church St, Guilford • I-95, Exit 58
203.453.5947 • guilfordartcenter.org

CRAFT EXPO

JULY 19 - JULY 21, 2024

*Shop from 170+ modern makers at
Connecticut's longest running craft show!*

Fashion & Accessories • Jewelry • Furniture
Yummy Gourmet Specialties • Kids Activities
Silent Auction • Live Music • Food Trucks



On the Guilford Green: 33 Whitfield Street
www.guilfordartcenter.org/expo

History



Science, History and Fun

Yale Peabody Museum: Full Send Productions/Market New Haven

When we talk about history in Greater New Haven, we typically start in the 1600s. This year we are going back further in time, about four billion years.

The **Yale Peabody Museum** reopened in 2024 after four years dedicated to an extensive renovation and expansion project. Thanks to a generous donation of \$160 million, the museum has undergone a complete transformation with new classrooms, expanded collection areas, and 50% more gallery space. Founded in 1866, the museum now boasts a light-filled, accessible, and interactive space that will support research and serve as a valuable community resource for sharing scientific knowledge.

Inside the museum, visitors will discover an impressive collection of fossils, minerals, birds, mammals, fishes, amphibians, reptiles, and historical scientific instruments. With the

museum's expansion, it will now be able to showcase more of its 14 million specimens and objects.

A crowd favorite, the **Great Hall of Dinosaurs** is showcasing new fossil material, including the first discovered specimens of Brontosaurus, Stegosaurus, and Triceratops in dynamic poses beneath Rudolph Zallinger's acclaimed **"The Age of Reptiles"** mural. During the renovation closure, the 150-million-year-old Brontosaurus underwent a thorough cleaning and was accurately re-mounted, resulting in a more lifelike and dynamic display.

The Peabody Museum's conservation efforts ensure that these invaluable resources can be passed on to future generations, providing insights into the processes that shape our world and the interconnectedness of life. There has never been a better or more relevant time to visit the **Yale Peabody Museum**.



Amistad Schooner

HISTORIC SITES AND MUSEUMS

The Amistad, Long Wharf, New Haven.
The Amistad is Connecticut's flagship and a replica of the original schooner. In 1839,

Mende captives from Sierra Leone took control of the ship but could not navigate back to Africa. After being jailed in New Haven, the U.S. Supreme Court ultimately heard

NEW HAVEN MUSEUM
newhavenmuseum.org
 f t i y

Museum and Library

114 Whitney Avenue, New Haven, CT • 203-562-4183

Pardee-Morris House (open seasonally)

325 Lighthouse Road, New Haven, CT

History



Shoreline Trolley Museum

their case for freedom, and in 1841, the Mende captives were ordered freed. 860-992-4933, discoveringamistad.org

Amistad Memorial, 165 Church St., New Haven. This monument of Senghe Pieh (known as Joseph Cinque) stands on the former site of the New Haven Jail, where illegally kidnapped Africans were imprisoned in 1839 while awaiting trial. The work is distinguished by its unique three-sided form, each side highlighting the capture, trial, and return home of Senghe Pieh and his fellow captives. 203-946-8200, amistad-committeeinc.org

Beinecke Rare Book & Manuscript Library, 121 Wall St., New Haven. The 1963 building features translucent marble "windows" and a sculpture garden. The library is one of the world's largest libraries devoted entirely to rare books and manuscripts. It contains a Gutenberg Bible, original Audubon bird prints, and changing exhibits. Free. 203-432-2977, beinecke.library.yale.edu



Amistad Freedom Schooner Discovering Amistad Long Wharf Pier, New Haven

The Amistad, a 129' re-creation (of the original ship) was built in 2000 and commemorates the historic 1839 Amistad Uprising. During this famous incident, 53 kidnapped West Africans organized an uprising and eventually won their freedom in the US Supreme Court. The ship is used as a "floating classroom" to teach the lessons of the Amistad Uprising to advance social justice today.

Discovering Amistad engages children, adults and families in a discovery process to explore the story of The Amistad and its impact on Connecticut and the nation. The ship's homeport is New Haven CT; and it also travels to other CT ports down the Long Island Sound.



For 2024 ship itinerary or to schedule a visit:
discoveringamistad.org.



Thomas Griswold House: Mimi/Dudley

Grove Street Cemetery (1796), 227 Grove St., New Haven. A National Historic Landmark, the cemetery has an architecturally prominent Egyptian Revival gateway entrance facing High Street. Eminent people buried there include Noah Webster, Gen. David Humphreys, Roger Sherman, Charles Goodyear, Walter Camp, and Bart Giamatti. 203-787-1443, grovestreetcemetery.org

Henry Whitfield State Museum (c.1639), 248 Old Whitfield St., Guilford. The oldest house in Connecticut, this unusual stone building was constructed in 1639 for Henry Whitfield. The Whitfield House features 17th-19th century furnishings and artifacts. A stroll around the landscaped grounds features extensive stone walls, a bronze statue representing Henry Whitfield, and a ship's cannon from the War of 1812. 203-453-2457, ctvisit.com/listings/henry-whitfield-state-museum

New Haven Green, Bordered by College, Chapel, Church, and Elm Sts., New Haven. A National Historic Landmark, the Green is one of the nine squares in America's first planned city. The Green provides a backdrop for three historic churches that are outstanding examples of Gothic, Federal, and Georgian design.

New Haven Museum, 114 Whitney Ave., New Haven. The museum features several permanent exhibitions, including the New Haven Gallery, which displays the Eli Whitney Cotton Gin; the Amistad Gallery, showcasing Nathaniel Joselyn's Cinque Portrait; the Ingersoll Room, featuring Linda Lindroth's oversized Polaroid colorful portraits; and the Maritime Gallery with additional temporary exhibitions. One of the current exhibitions, "Shining Light on Truth," highlights the crucial role of enslaved and free Black people in New Haven and at Yale. It celebrates Black resistance and community building and sheds light on knowledge that has been kept alive in archives and memory for over three centuries, even when the dominant culture chooses to ignore, bury, or forget. 203-562-4183, newhavenmuseum.org

Pardee-Morris House, 325 Lighthouse Rd., New Haven. One of New Haven's oldest structures, the property descended in one family through seven generations. The original 1671 house was burned during the 1779 British invasion and reconstructed in 1780. Open Sundays 12-4 p.m. in the summer. Admission is free. 203-562-4183, newhavenmuseum.org/visit/pardee-morris-house/

History

Shore Line Trolley Museum, 17 River St., East Haven. A National Historic District - Enjoy a ride on a restored trolley from the oldest continuously running suburban trolley line in the US. The museum maintains several diverse collections of equipment, photographs, documents, and artifacts which preserve the history and heritage of the Trolley Era. Seasonal and select holidays. 203-467-6927, shorelinetrolley.org

Thomas Griswold House (1764), 171 Boston St., Guilford. Home of the Guilford Keeping Society, this 1764 saltbox house has a barn, blacksmith shop, two small corn cribs, and a three-hole privy. Seasonal. 203-453-2263, guilfordkeepingsociety.com

West Haven Veterans Museum and Learning Center, 30 Hood Terrace, West Haven. Our mission is to honor the men

and women who served our state and nation during times of conflict and natural disasters and to collect and preserve artifacts to help in that endeavor. 203-934-1111, whmilmuseum.org

William Lanson Statue, Lock St. & Canal St., New Haven. The statue commemorates the life of William Lanson, a 19th-century Black entrepreneur from New Haven. His accomplishments include expanding Long Wharf to increase shipping capacity and building the Farmington Canal.

Yale Peabody Museum of Natural History, 170 Whitney Ave., New Haven. The Yale Peabody Museum reopened in spring 2024 after a four-year renovation. The newly renovated space features captivating exhibits, including a striking 3D cityscape by local artist Mohamad Hafez. Don't miss the chance to explore this treasure trove of knowledge and wonder with free admission for everyone. 203-432-8987, peabody.yale.edu



WADSWORTH MANSION
at Long Hill Estate

Visit our website for information on public events & private rentals

WWW.WADSWORTHMANSION.COM



Whatever You Choose, You Won't Walk Away Hungry

Lazeez

Greater New Haven covers just 369 square miles, but our cuisine will take you around the world. New Haven's history of welcoming immigrants translates into a culinary feast that covers five continents. Try **Lalibela's** Ethiopian menu or the best of Thailand at **Mai Tai Restaurant**. Sample Afro-Cuban cuisine at **Soul de Cuba** or Latin American fusion at **Pacifico**. The **Union League Café** is a French favorite, and **Lúdâl Italian Restaurant** is an elegant Italian trattoria. **Jalapeño Heaven** specializes in Mexican dishes, while **The Wharf** serves up New American cuisine. This list is just an appetizer of the culinary choices waiting for you throughout the region.

Don't forget to order drinks! Established wineries include **Chamard**, **Gouveia**, **Paradise Hills**, **Savino**, **Rose**, and **Rosabianca**. Beer flows throughout the region as well. Among the most popular breweries are **Stony Creek Brewery** in Branford, with seating overlooking the Branford River, and New Haven's own **East Rock Brewing Company**.

New Haven is best known, of course, as the

home of pizza. Rivals **Sally's Apizza** and **Frank Pepe Pizzeria Napoletana** go up against other hometown favorites like **Modern Apizza**, **BAR**, **Zuppardi's Apizza**, and **Zeneli Pizzeria & Cucina Napoletana**. Visit a few and judge for yourself which one serves up the best slice.

Connecticut's rich farmland means many of our restaurants have embraced local produce. Menus vary with the seasons as our imaginative chefs integrate fresh ingredients into both new and traditional recipes. You can buy fresh yourself at pop-up farmers' markets and shops like **Bishop's Orchards Farm Market** in Guilford and **Hindinger Farm** in Hamden.

A full day of sightseeing should include a break for refreshments, too. Check out the many coffee shops, ice cream parlors, and small cafes along the way, including the top-rated **Arethusa Farm Dairy** in New Haven, **Ashley's Ice Cream** in Branford, New Haven, and Guilford, and **Willoughby's Coffee & Tea** in New Haven, Branford, and Madison, among others.

RESTAURANTS

Key:

\$ average entree up to \$20

\$\$ average entree \$21-\$29

\$\$\$ average entree \$30 & up

AMERICAN/CONTINENTAL

Archie Moore's Bar & Restaurant,
archiemoores.com **\$**
• 988 Main St., Branford.
203-481-6100

• 15 Factory Ln., Milford. 203-876-5088
• 188 1/2 Willow St., New Haven.
203-773-9870
• 39 N. Main St., Wallingford.
203-265-7100

Bar August, 3 Edwards St.,
New Haven. 203-745-4531,
baraugust.com **\$\$\$**

Bella's Café, 896 Whalley Ave.,
New Haven. 203-387-7107,
bellascafe.com **\$**

Blackie's Hot Dog Stand,
2200 Waterbury Rd., Cheshire.
860-699-1819 **\$**

The Corner Brunch, 105 River St.,
Milford. 203-882-1150,
thecornerbrunch.com **\$**

Dogtown, 664 New Haven Ave.,
Milford. 203-767-2895,
dogtownct.com **\$**

Best of Food & Drink



Junzi

RESTAURANTS

Key:

\$ average entree up to \$20

\$\$ average entree \$21-\$29

\$\$\$ average entree \$30 & up

Elm City Social, 286 College St.,
New Haven. 475-441-7436,
elmcitysocial.com **\$\$**

Georgie's Diner, 427 Elm St.,
West Haven. 203-933-1000,

georgies-diner.com **\$**

Hidden Kitchen, 2341 Foxon
Rd, North Branford 203-315-0099,
hiddenkitchenrt80.com **\$**



Look at me
I'm 18!

...getting older
and still
having fun!



Walnut Beach Creamery

MILFORD'S ONLY HANDCRAFTED GOURMET ICE CREAMS
17 BROADWAY MILFORD, CT 06460 WALNUTBEACHCREAMERY.COM



Camacho Garage

RESTAURANTS

Key:

\$ average entree up to \$20

\$\$ average entree \$21-\$29

\$\$\$ average entree \$30 & up

Home, 1114 Main St., Branford. 203-483-5896, homerestaurantct.com **\$**

John Davenport's Restaurant, Omni Hotel, 155 Temple St., New Haven. 203-974-6858, omnihotels.com **\$\$\$**

K LaMay's Steamed Cheeseburgers, 690 E. Main St., Meriden. 203-237-8326, klamayssteamed-cheeseburgers.com **\$**

Katz's Restaurant & Deli, 1658 Litchfield Tpke., Woodbridge. 203-389-5301, katzsdeli.net **\$**

Louis' Lunch, 261 Crown St., New Haven. 203-562-5507, louislunch.com **\$**

Meat & Co., 285 Nicoll St., New Haven. 203-776-MEAT, meatandcompany.com **\$**

Nataz Restaurant, natazrest.com **\$\$**
 • 1 W. Main St., Clinton. 203-664-5375
 • 280 Branford Rd., North Branford. 203-315-0180

Olmo Bagels, 93 Whitney Ave., New Haven. 203-624-3373, olmobagels.com **\$\$**

Poppy's Coffee, 374 Whitney Ave., New Haven. 203-891-7753, poppysnhv.com **\$**

Sans Souci, 2003 N. Broad St., Meriden. 203-639-1777, sanssoucirestaurant.com **\$\$**

Stonebridge Restaurant, 50 Daniel St., Milford. 203-874-7947, stonebridgerestaurant.com **\$\$\$**

Tavern on State, 969 State St., New Haven. 475-202-6883, tavernonstate.com **\$\$**

Ted's Restaurant, 1046 Broad St., Meriden. 203-237-6660, tedsrestaurant.com **\$**

Three Sheets, 372 Elm St., New Haven. 475-202-6909, linktr.ee/threesheetsnewhaven **\$**

Vinny's Deli, 567 Center St., Wallingford. 203-265-7288, vinnysdeli.com **\$**

The Wharf, 94 W. Wharf Rd., Madison. 203-350-0014, thewharfmadison.com **\$\$**

Woodbridge Social, 12 Selden St., Woodbridge. 203-553-9135, woodbridgesocial.com **\$**

Zinc, 964 Chapel St., New Haven. 203-624-0507, zincnewhaven.com **\$\$\$**

ASIAN

Hachiroku Shokudo & Sake Bar, 261 Orange St., New Haven. 203-691-7984 **\$**

Jerry-San's Sushi Bar, 1 Jefferson Rd., Branford. 203-208-2169, jerrysan-sushi.com **\$**

Lao Sze Chuan, 1585 Boston Post Rd., Milford. 203-783-0558, laoszechuanmilford.com **\$\$**

Let It Be Thai Café, 1559 Dixwell Ave., Hamden. 203-230-2077, letit-betaithaicafe.com **\$\$**

Mecha Noodle Bar, 201 Crown St., New Haven. 203-691-6971, mechanoodlebar.com **\$**

Menya Gumi, 165 Orange St., New Haven. 203-535-0302, menya-gumi.com **\$\$**

Miso, 15 Orange St., New Haven. 203-848-6472, misorestaurant.com **\$\$**

New Haven's Taste of China, 954 Chapel St., New Haven. 203-745-5872, nhtasteofchina.com **\$\$\$**

Noa, 200 Crown St., New Haven. 475-238-6290, noanewhaven.com **\$\$**



Best of Food & Drink

RESTAURANTS

Key:

\$ average entree up to \$20

\$\$ average entree \$21-\$29

\$\$\$ average entree \$30 & up

Old Street Dim Sum and Hot

Pot, 187 Cherry St., Milford. 203-283-0542, oldstreetmilford.com **\$**

Pad Thai Restaurant

, 1170 Chapel St., New Haven. 203-562-0322, padthainewhavenct.com **\$**

Pho Ketkeo

, 21 Temple St., New Haven. 203-745-5480, phoketkeo.com **\$**

Rockfish Sushi Bar at East

Rock Market, 285 Nicoll St., New Haven. 203-823-9148, eastrockmarket.com/rockfish **\$\$**

September in Bangkok, 754 State St., New Haven. 475-234-5239, septemberinbangkok.com **\$**

Sonobana, 1206 Dixwell Ave., Hamden. 203-281-9922, sonobana.com **\$\$**

Thai Stories Restaurant, 16 Selden St., Woodbridge. 203-389-3363, thaistoriestrestaurant.com **\$**

Tibetan Kitchen, 1217 Chapel St., New Haven. 860-759-5465, tibetankitchen.us **\$**

Wasabi, 350 Boston Post Rd., Orange. 203-795-5856, wasabiorange.com **\$\$**

CARIBBEAN

Island Cho Caribbean Cuisine, 448 Washington Ave., North Haven. 203-891-5228, islandchocaribbean.com **\$\$**

Sabor Peru, 56 Main St. Annex, New Haven. 203-780-8801, saborperuct.com **\$\$\$**

COFFEE

Cilantro, 85 Whitfield St., Guilford. 203-458-2555, cilantro.coffee **\$**

Koffee?, 104 Audubon St., New Haven. 203-465-6244, koffeefamily.com **\$**

Legal Grounds, 1235 Whitney Ave., Hamden. 203-980-3498 **\$**

Madison Coffee House, 724 Boston Post Rd., Madison. 203-421-2460, madisoncoffeehouseilc.com **\$**

Willoughby's Coffee and Tea, willoughbyscoffee.com **\$**

• 550 E. Main St., Branford.

203-481-1700

• 752 Boston Post Rd., Madison.

203-245-1600

• 194 York St., New Haven.

203-789-8400

• 258 Church St., New Haven.

203-777-7400

ETHIOPIAN

Lalibela, 176 Temple St., New Haven. 203-789-1232, lalibelact.com **\$\$**



EXPERIENCE ITALIAN FINE DINING AT L'ORCIO

Come over to L'Orcio Italian restaurant in New Haven, CT. Sample our savory authentic dishes including handmade pastas and desserts served in our beautiful historical building. Our food is crafted using only the freshest traditional ingredients to ensure quality in everything we serve. Reserve your table at lorcio.com.



L'ORCIO

(terracotta jar used for storing olive oil)

806 STATE ST • NEW HAVEN, CT 06511
203-777-6670 • LORCIO.COM



NEW HAVEN'S HIDDEN GEM

Welcome to New Haven Village Suites, an extended stay experience crafted for those who crave flexibility and seamless living. We offer the convenience of a hotel with the warm embrace of home. Your journey to a perfect blend of comfort and flexibility starts here.



3 Long Wharf Drive | New Haven, CT 06511
203-777-5337 | newhavenvillagesuites.com



Louis' Lunch

RESTAURANTS

Key:

\$ average entree up to \$20

\$\$ average entree \$21-\$29

\$\$\$ average entree \$30 & up

FRENCH

Bar Bouchée, 8 Scotland Ave., Madison. 203-318-8004, barbouchee.com **\$\$**

Otoulouse, 2 E. Main St., Branford. 203-208-4285, otoulousebranford.com **\$\$\$**

Union League Café, 1032 Chapel St., New Haven. 203-562-4299, unionleaguecafe.com **\$\$\$**

GREEK

The Greek Spot Cafe & Grill, 726 E. Broadway, Milford. 203-693-3970 **\$\$**

GROCERY

Bishop's Orchards & Winery, 1355 Boston Post Rd., Guilford. 203-453-2338, bishopsorchards.com

Edge of the Woods, 379 Whalley Ave., New Haven 203-787-1055, eotwm.com

INDIAN

Coromandel, 185 Boston Post Rd., Orange. 203-795-9055, coromandelorangect.com **\$\$**

Cumin India Restaurant, 262 Skiff St., Hamden. 203-248-6464, cuminindia.com **\$\$**

Darbar India, 168 Montowese St., Branford. 203-481-8994, darbarindia.com **\$\$**

House of Naan, 65 Howe St., New Haven. 203-562-6226, houseofnaan.com **\$\$**

Lazeez, 40 Orange St., New Haven. 203-780-8347, lazeezindiancuisine.com **\$**

Sherkaan, 65 Broadway, New Haven. 203-405-5808, sherkaan.com **\$**

ITALIAN/ MEDITERRANEAN/PIZZA

Apizza Grande Bethany, 119 Amity Rd., Bethany. 203-859-5369, apizzagrandebethany.com **\$\$**

BAR, 254 Crown St., New Haven. 203-495-8924, barnightclub.com **\$**

Bellini's Restaurant, 2 Broadway, North Haven. 203-234-2221, bellinisnorthhaven.com **\$\$**

Bufalina, 1070 Boston Post Rd., Guilford. 203-458-1377, bufalinact.com **\$\$**

Da Legna at Nolo, 687 State St., New Haven. 203-891-7704, jet2nolo.com **\$\$**

Encore by Goodfellas, 702 State St., New Haven. 203-785-8722, encorerestaurantct.com **\$\$\$**

Ernie's Pizzeria, 1279 Whalley Ave., New Haven. 203-387-3362 **\$**

Frank Pepe Pizzeria Napoletana, 157 Wooster St., New Haven. 203-865-5762, pepespizzeria.com **\$**

Gioia Café & Bar, 150 Wooster St., New Haven. 475-250-3451, gioianewhaven.com **\$\$**

Gusto Restaurant, 255 Boston Post Rd., Milford. 203-876-7464, gustotrattoria.com **\$\$**

L'Orcio, 806 State St., New Haven. 203-777-6670, lorcio.com **\$\$\$**

La Luna Ristorante, 168 N. Main St., Branford. 203-483-9995, lalunact.com **\$\$\$**

Little Rendezvous, 256 Pratt St., Meriden. 203-235-0110, thelittlevous.com **\$**

Lúdal, 28-30 Broadway, North Haven. 203-234-1814, ludalct.com **\$\$**

The Luke Brasserie, 261 College St., New Haven. 475-666-8001, thelukebrasserie.com **\$\$\$**

Mi Bella Restaurante, 225 Montowese St., Branford. 203-208-4102, mibelarestaurante.com **\$\$**

Best of Food & Drink



Zeneli

RESTAURANTS

Key:

\$ average entree up to \$20

\$\$ average entree \$21-\$29

\$\$\$ average entree \$30 & up

Modern Apizza, 874 State St.,
New Haven. 203-776-5306,
modernapizza.com **\$**

Quattro's Italian Cuisine,
14 Water St., Guilford. 203-453-6575,
quattrositalian.com **\$\$**

Rawa, 838 Whalley Ave., New Haven.
203-691-5781, rawainc.com **\$\$**

Rossitto's Ristorante, 284 E. Main
St., Branford. 203-483-7773,
rossittos.com **\$\$**

Sally's Apizza, 237 Wooster St.,
New Haven. 203-624-5271,
sallysapizza.com **\$**

Siena Ristorante, The Blake Hotel,
9 High St., New Haven. 203-390-5192,
theblakenewhaven.com **\$\$**

Strega, 9 River St., Milford.
203-283-1849, stregamilford.com **\$**

Villa Lulu, 230 College St., New Haven.
203-691-7177, villaluluct.com **\$\$**

**Zeneli Pizzeria & Cucina Napo-
letana**, 138 Wooster St., New Haven.
203-745-4194, zenelipizzeria.com **\$**

Zuppardi's Apizza, 179 Union Ave.,
West Haven. 203-934-1949,
zuppardisapizza.com **\$**

LATIN AMERICAN/ SPANISH/CUBAN

Bistro Basque, 13 River St.,
Milford. 203-878-2092,
bistrobasqueusa.com **\$\$**

**Bistro Mediterranean &
Tapas Bar**, 383 Main St., East Haven.
203-467-2500,
bistromediterraneanandtapasbar.com **\$\$\$**

Icaru, 39 Elm St., New Haven. 203-823-
9048, icarurestaurant.com **\$\$**

La Isla, 2779 Dixwell Ave., Hamden.
203-891-5170, laislahamden.com **\$**

Madeline's Empanaderia, 86
Spring St., New Haven. 475-227-6380,
madelinesempanadas.com **\$**

Olea, 39 High St., New Haven. 203-
780-8925, oleanewhaven.com **\$\$\$**

Solun Tapas Bar & Restaurant,
245 Amity Rd., Woodbridge. 203-298-
9741, soluntapasbar.com **\$\$**

MEXICAN/SOUTHWEST

Bubbakoo's Burritos, 116 Boston
Post Rd., Orange. 203-298-0745,
bubbakoos.com **\$**

Camacho Garage, 36 Fountain St.,
New Haven. 203-691-1969,
camachogarage.com **\$\$**

Jalapeño Heaven, 40 N. Main St.,
Branford. 203-481-6759,
jalapeno-heaven.com **\$**

MIDDLE EASTERN

Ali Baba's Kitchen, 986 Dixwell
Ave., Hamden. 203-535-1164,
alibabaskitchen.com **\$\$**

Midpoint Istanbul Fine Dining,
245 Crown St., New Haven. 203-745-
4741, midpointfinedining.com **\$\$\$**

Saray Restaurant, 770 Campbell
Ave., West Haven. 203-937-0707,
saraykebab.com **\$\$**

STREET FOOD/TAKEOUT

**New Haven Street Food
Districts**, Cedar St., Downtown New
Haven, Long Wharf Dr., and Schemm St.
New Haven. streetfoodnhv.com **\$**,
various cuisines

Best of Food & Drink

RESTAURANTS

Key:

\$ average entree up to \$20

\$\$ average entree \$21-\$29

\$\$\$ average entree \$30 & up

SEAFOOD

Clam Castle, 1324 Boston Post Rd.,
Madison. 203-245-4911,
clamcastlect.com **\$**

Dockside Restaurant, 145 Block
Island Rd., Branford. 203-488-3007,
docksidebranford.com **\$** (seasonal)

Fair Haven Oyster Co., 307 Front
St., New Haven. 203-745-5741,
fairhavenoysterco.com **\$**

Guilford Lobster Pound, 505 Old
Whitfield St #3443, Guilford. 203-453-
6122, guilfordlobsterpound.com **\$\$**

Guilford Mooring, 505 Whitfield St.,
Guilford. 203-458-2921,
guilfordmooring.com **\$\$**

The Lazy Lobster Restaurant,
6 Broadway, Milford. 203-283-1864,
thelazylobster.com **\$** (seasonal)

Lenny's Indian Head Inn,
205 S. Montowese St., Branford.
203-488-1500, lennysnow.com **\$\$**

Lenny and Joe's Fish Tale, 1301
Boston Post Rd., Madison. 203-245-
7289, ljfishtale.com **\$**

Lobster Shack, 3 Cosey Beach Ave.,
East Haven. 203-483-8414,
lobstershacket.com **\$**

The Place, 901 Boston Post Rd.,
Guilford. 203-453-9276,
theplaceguilford.com **\$\$** (seasonal)

Otaru Sushi Bar, 21 Temple St.,
New Haven. 203-891-6632,
sushiotaruct.com **\$\$**

Sandpiper Restaurant, 161 Cosey
Beach Ave., East Haven. 203-469-7544,
sandpipereasthaven.com **\$\$**

Seven Seas Restaurant & Pub,
16 New Haven Ave, Milford. 203-877-
7327, 7seasmilford.com **\$**

Shell and Bones, 100 S. Water St.,
New Haven. 203-787-3466,
shellandbones.com **\$\$\$**



The Lazy Lobster

Stowe's Seafood, 347 Beach St.,
West Haven. 203-934-1991,
stowesseafoodct.com **\$**

Supreme Seafood Restaurant,
999 Foxon Rd., North Branford.
203-484-2721, supremeseafood.net **\$\$**

SOUTHERN

**Bear's Smokehouse BBQ at the
District**, 470 James St., New Haven.
203-780-8157,
bearsbbq.com/new-haven **\$\$**

Sandra's Next Generation, 636
Congress Ave., New Haven. 203-787-
4123, sandrasnextgeneration.com **\$**

STEAKHOUSE

Cast Iron Chef & Oyster Bar, 660
State St., New Haven. 203-745-4669,
castironchefnewhaven.com **\$\$\$**

Millpond Gatherings, 1565 Mid-
dletown Ave., North Branford. 203-714-
4400, millpondgatherings.com **\$\$\$**

SWEETS

Banana's Ice Cream, 1122 N.
Colony Rd., Wallingford. 203-269-1869,
bananasicecreamct.com **\$**

Dip Top, 263 Boston Post Rd.,
Orange. 203-795-0664 **\$**

Jennifer's Ice Cream, 388 Main St.,
East Haven. 203-468-1573,
jennifersicecream.com **\$**

Neil's Donuts, 83 N. Turnpike Rd.,
Wallingford. 203-269-4255,
neilsdonuts.com **\$**

Sugar Bakery, 424 Main St., East
Haven. 203-469-0815,
thesugarbakery.com **\$**

Sweet Cupcasions, 394 New Haven
Ave., Milford. 203-283-9455,
sweetcupcasions.com **\$**

Walnut Beach Creamery, 17
Broadway #19, Milford. 203-878-7738,
walnutbeachcreamery.com **\$** (seasonal)

VEGETARIAN

Arles & Boggs Vegan Eatery,
100 Quinnipiac St., Wallingford.
203-741-9186, arlesandboggs.com **\$**

Claire's Corner Copia, 1000 Chapel
St., New Haven. 203-562-3888, claires-
cornercopia.com **\$**

Three Girls Vegan Creamery, 645
Boston Post Rd., Guilford. 203-896-
0411, threegirlsvegan.com **\$**

Wild Alchemy Café, 600 N. Colony
Rd., Wallingford. 203-265-5000,
pureauchemyjuice.com **\$\$**

Best of Food & Drink



The Shops at Yale - Dining, theshopsatyale.com

Union League Café, The Shops at Yale

RESTAURANTS

Key:

\$ average entree up to \$20

\$\$ average entree \$21-\$29

\$\$\$ average entree \$30 & up

Anchor Spa, 272 College St., New Haven. 203-821-7065, anchorspa.com
\$\$, American/Continental

Arethusa Farm Dairy, 1020 Chapel St., New Haven. 203-390-5114, arethusafarm.com **\$**, Ice Cream/Frozen Yogurt

Ashley's Ice Cream, 280 York St., New Haven. 203-776-7744, ashleysicecream.net **\$**, Ice Cream/Frozen Yogurt

Atticus Bookstore & Café, 1082 Chapel St., New Haven. 203-776-4040, atticusnhv.com **\$**, American/Continental

Ay Arepa, 56 Broadway (kiosk on Broadway Island), New Haven. 203-553-6333 **\$\$**, Latino/Spanish/Puerto Rican/Colombian/Cuban

B Natural Kitchen and Bar, 260 College St., New Haven. 203-821-7093, bnaturalkitchen.com **\$**, American/Continental

Book Trader Café, 1140 Chapel St., New Haven. 203-787-6147, booktradercafe.net **\$**, American/Continental

Claire's Corner Copia, 1000 Chapel St., New Haven. 203-562-3888, clairescornercopia.com **\$**, Vegetarian

Common Grounds, 276 York St., New Haven. commongrounds.com **\$**, Coffee/Tea House

Donut Crazy, 290 York St., New Haven. 203-745-4149, donutcrazy.com **\$**, Bakery

Good Nature Market, 15 Broadway, New Haven. 203-787-4533 **\$**, American/Continental

Harvest Wine Bar & Restaurant, 1104 Chapel St., New Haven. 203-777-2500, harvestwinebar.com **\$\$**, American/Continental

Heirloom at The Study, 1157 Chapel St., New Haven. 203-503-3919, heirloomnewhaven.com **\$\$\$**, American/Continental

Hot Pot, 68 Whitney Ave., New Haven. 203-390-5898 **\$\$**, Chinese

J&B Deli, 1147 Chapel St., New Haven. 203-773-0709, jandbdeli.com **\$**, American/Continental

The Juice Box, 1092 Chapel St., New Haven. 203-562-0068, juiceboxnewhaven.com **\$**, Vegetarian

Loose Leaf Boba Company, 46 High St., New Haven. 203-777-4040, bobacompany.com **\$**, Coffee/Tea House

Maison B Café, 304 Elm St., New Haven. 203-752-9779, maisonbcafe.com **\$**, American/Continental

Midpoint Istanbul, 245 Crown St., New Haven. 203-745-4741, midpointfinedining.com **\$\$**, Middle Eastern

Best of Food & Drink



Nice Day Chinese, 316 Elm St., New Haven. Chinese (opening winter 2024)

Old Heidelberg at Graduate New Haven, 1151 Chapel St., New Haven. 475-207-7070, graduatehotels.com/new-haven \$, American/Continental

Pacifico, 220 College St., New Haven. 203-772-4002, pacificonewhaven.com \$\$\$, Latino/Spanish/Puerto Rican/Colombian/Cuban

Pedals Smoothie & Juice Bar, 284 York St., New Haven. 485-655-2105, drinkpedals.com \$, Vegetarian

Philly's A Taste of Philadelphia, 1008 Chapel St., New Haven. 203-823-9315, eatcheesesteak.com \$, American/Continental

Pokémoto Hawaiian Poké, 1145 Chapel St., New Haven. 203-691-6545, pokemoto.com \$, Hawaiian

Shake Shack, 986 Chapel St., New Haven. 203-747-8483, shakeshack.com \$, American/Continental

Sherkaan Indian Street Food, 65B Broadway, New Haven. 203-405-5808, sherkaan.com \$\$, Indian

South Bay, 228 College St., New Haven. 475-241-3996, southbayct.com \$\$\$, Mediterranean

Strega, 1006 Chapel St., New Haven. (opening winter 2024)

Sushi on Chapel, 1022 Chapel St., New Haven. 203-776-4200, sushion-chapelnh.com \$\$, Japanese/Korean

Tomatillo Taco Joint, 320 Elm St., New Haven. 203-782-6000, tomatillo-tacojoint.com \$, Mexican

Tropical Smoothie Café, 15 Dixwell Ave., New Haven. 203-691-5428, tropicalsmoothiecafe.com \$

Union League Café, 1032 Chapel St., New Haven. 203-562-4299, union-leaguecafe.com \$\$\$, French

Villa Lulu, 230 College St., New Haven. 203-691-7177, villaluluct.com \$\$\$, Mediterranean

Willoughby's Coffee & Tea, 194 York St., New Haven. 203-789-8400, willoughbyscoffee.com \$, Coffee/Tea House

Yamasaki Teriyaki, 9 Dixwell Ave., New Haven. 203-780-8891, yamasakiteriyaki.com \$, Japanese/Korean

Yorksides Pizza and Restaurant, 288 York St., New Haven. 203-787-7471, yorksidepizza.com \$, Italian/Mediterranean/Pizza

ZINC New Haven, 964 Chapel St., New Haven. 203-624-0507, zincnewhaven.com \$\$\$, American/Continental

Get comfortable at Courtyard New Haven at Yale. Located walking distance from Yale University, our hotel in New Haven CT has everything you need to make the most of your stay. Recharge in our hotel rooms with free Wi-Fi, ergonomic workspaces, and plush Marriott bedding. Satisfy your appetite at the Bistro, our onsite restaurant, and bar serving healthy breakfast and dinner options, Starbucks® coffee, and evening cocktails. You can also try New Haven restaurants near our hotel like Yorkside Pizza, Basile, and Claire's Corner Copia.

Maintain your active lifestyle at our 24-hour fitness center or enjoy outdoor activities at East Rock Park. During your stay, enjoy easy access to attractions like York Square, Oakdale Theatre, Knights of Columbus Museum, and local art studios. Whatever brings you to town, make your stay a success at Courtyard New Haven at Yale.

COURTYARD[®]
BY MARRIOTT
New Haven At Yale



30 Whalley Avenue,
New Haven, CT 06511

Reservations:
203-777-6221
www.marriott.com/hvndt

Best of Food & Drink



Farms & Wineries

Gouveia Vineyards

Bishop's Orchards & Winery, 1355 Boston Post Rd., Guilford. Since 1871, Bishop's has proudly supplied Connecticut with top-quality farm goods. The Farm Market & Winery operates year-round, offering seasonal fruit picking and entertainment. 203-453-2338; PYO Hotline 203-458-PICK, bishopsorchards.com

Blue Hills Orchards, 141 Blue Hills Rd., Wallingford. 203-269-3189, bluehillsorchard.com

Buttermilk Lane Farm, 870 Garden Rd., Orange. 203-891-9128

Chamard Vineyards, 115 Cow Hill Rd., Clinton. 860-664-0299, chamard.com

Clover Nook Farm, 50 Fairwood Rd., Bethany. 203-393-2929, clovernookfarm.com

Glendale Farms, 203 Herbert St., Milford. 203-874-7203, glendalefarms.com

Gouveia Vineyards, 1339 Whirlwind Hill Rd., Wallingford. 203-265-5526, gouveiavineyards.com

Hindinger Farm, 835 Dunbar Hill Rd., Hamden. 203-288-0700, hindingersfarm.com

Lyman Orchards, 32 Reeds Gap Rd., Middlefield. 860-349-6000 (main) 860-349-6015 (PYO), lymanorchards.com

Paradise Hills Vineyard & Winery, 15 Wind Swept Hill Rd., Wallingford. A family-run boutique winery founded in 1997, it crafts exceptional full-bodied wines from estate-grown grapes amid 65 acres of rolling hills. Enjoy a delightful picnic in a stunning landscape. Open year-round. 203-284-0123, paradisehillsvineyard.com

Rosabianca Vineyard & Winery, 1536 Middletown Ave., Northford. 203-208-1211, rosabiancavineyards.com

Rose Orchards Farm, 33 Branford Rd., North Branford. 203-488-7996, roseorchardsfarm.com

Rose Vineyard & Winery, 2 Valley Rd., North Branford. 475-221-8636, rosevineyards.com

Savino Vineyards, 128 Ford Rd., Woodbridge. 203-389-2050, savinovineyards.net

Stappa Vineyard, 403 Derby Ave., Orange. 203-795-1795, stappavineyard.com

Sunflower Farm, 767 Derby Milford Rd., Orange. 203-795-6829

Treat Farm, 361 Old Tavern Rd., Orange. 203-799-2453, treat.farm

Best of Food & Drink



Breweries

Armada Brewing, 190 River St., New Haven.
armadabeer.com

BAR/BruRm, 254 Crown St., New Haven. 203-495-8924,
barnightclub.com

Bear's Smokehouse at the Stack, 470 James St.,
New Haven. 203-350-9060, bearsbbq.com/new-haven

**The Beeracks/Hoax Brewing/Hull's Brewing
Company/New Haven Nighthawks Brewing/
Overshores Brewing**,
250 Bradley St., East Haven. 203-909-6224, thebeeracks.com

Caius Farm Brewery, 101 North Branford Rd., Branford.
203-433-4660, caiusfarmbrewery.com

Center Street Brewing Company, 24 Wallace Ave.,
Wallingford. 203-626-9056, centerstreetbrewing.com

Dockside Brewery and Waterfront Biergarten, 40
Bridgeport Ave., Milford. 203-693-3900, docksidebrewery.com

East Rock Brewing Company & Beer Hall, 285 Nicoll
St., New Haven. 475-234-6176, eastrockbeer.com

Haven Beer Co., 2323 Whitney Ave, Hamden.
havenbeerco.com (opening 2024)

Milford Point Brewing, 230 Woodmont Rd. #29B,
Milford. 203-701-9077, milfordpointbrewing.com

New England Brewing Company, 175 Amity Rd.,
Woodbridge. 203-387-2222, newenglandbrewing.com

No Worries Brewing Company, 2520 State St.,
Hamden. 203-691-6662, noworriesbeer.com

Southport Brewing Company (SBC), 33 New Haven
Ave., Milford. 203-874-2337, sbcrestaurants.com

Stewards of the Land Brewery, 418 Forest Rd.,
Northford. stewardsofthelandbrewery.com

Stony Creek Brewery, 5 Indian Neck Ave., Branford.
203-433-4545, stonycreekbeer.com

Thimble Islands Brewing Company, 16 Business Park
Dr., Branford. 203-208-2827, thimbleislandbrewery.com

#GENFRESH

GENERATION
FRESH

family fun all year round!

Farm Market • Winery
Bakery • CSA • Creamery
Pick Your Own • Events



**BISHOP'S
ORCHARDS**
bishopsorchards.com

1355 Boston Post Rd.
Guilford, CT
P: 203-453-2338

Mon-Sat: 8am-7pm
Sun: 9am-6pm

LITTLE RED
bar[n]
AT BISHOP'S ORCHARDS
**BISHOP'S
ORCHARDS**
creamery

Things To Do



West Haven Beach

OUTDOOR ADVENTURES

PARKS & TRAILS

East Rock Park, 41 Cold Spring St., New Haven. 425 acres, featuring the historic Soldiers & Sailors Monument. The park offers over 10 miles of hiking trails, a view of Long Island Sound, and access to the Pardee Rose Garden. Dawn to dusk. 203-946-6086, newhavenct.gov

Farmington Canal Linear Park, New Haven/Hamden. More than 16 scenic miles of walkway perfect for biking, walking, hiking, and in-line skating, beginning in Hamden and continuing south into New Haven. Parking is available on Todd St., Sherman Ave., and Brooksvale Ave. The full trail is approximately 84 miles and extends into Massachusetts. Dawn to dusk. 203-287-2579, farmingtoncanal.org

Hubbard Park and Castle Craig, 999 West Main St., Meriden. 1,800-acre park includes a lake, tennis courts, a pavilion, swings, and a playground for younger children. Castle Craig is a replica of an ancient castle resting 1,002 feet above sea level. 203-630-4259, meridentct.gov/city-services/parks-and-recreation/hubbard-park/

Powder Ridge Mountain Park & Resort, 99 Powder Hill Rd., Middlefield. This urban mountain sports park and resort features skiing, snowboarding, tubing, mountain biking, and synthetic snow adventures for all ages. 860-349-3454, powderridgepark.com

Sleeping Giant State Park, 200 Mt. Carmel Ave., Hamden. Two miles of mountaintop, with a 1.5-mile scenic trail leading to the peak of Mt. Carmel and observation tower, provides an excellent view of Long Island Sound and the New Haven area. The park offers 32 miles of hiking trails and picnic

areas. 8 a.m.-sunset. ctparks.com

SCRCOG Regional Trails, Over 100 trails with maps and information available, including a map of the trail(s), descriptive information, directions, parking information, permitted uses, and contact information. scrcog.org/regional-planning/regional-trails

BOATING

Branford River Paddlesports, 50 Maple St., Branford. Offers paddleboard and kayak rentals, tours, and lessons. 203-980-8451, branfordriverpaddlesports.com

The Islander Thimble Island Tours, Stony Creek, Branford. Relax, see the sites, and learn the unique history of the Thimbles Islands on a 45-minute narrated tour. Seasonal. 203-433-2233, thimbleislander.weebly.com

Pedal Cruise Connecticut, Milford Harbor, Milford. This 90-minute, relaxing & breezy excursion takes you out on Long Island Sound with 12 pedal stations that propel the rear paddle. 877-777-9322, pedalcruise.com

Quinnipiac River Marina, 309 Front St., New Haven. Rent a kayak to explore the Quinnipiac River—boat access to Long Island Sound. 203-777-3625, quinnipiacrivermarina.com

Scoot & Paddle, 28 Naugatuck Ave., Milford. Kayak, stand-up paddleboard, motorized scooter rentals, lessons, group tours, and more. 203-713-8282, scootandpaddle.com

Thimble Island Cruises - Sea Mist, Stony Creek, Branford. A 45-minute narrated tour around the picturesque Thimble Islands. Seasonal. 203-488-8905, thimbleisland-cruise.com

Things To Do

Thimble Island Cruises - Volsunga IV, Stony Creek, Branford. Take a memorable 45-minute ride through the charming Thimble Islands. Seasonal. 203-481-3345, thimbleislands.com

BEACHES

Anchor Beach, 136 Beach Ave., Milford. A small, sandy beach in the Borough of Woodmont. Rock outcroppings and small islands on the sound make this a scenic viewpoint. 203-783-3280

Branford Town Beach, Harbor St., Branford. The beach is in the south-central part of town at the end of Harbor Street. The beach is open to the public until dusk. 203-488-8304

East Haven Town Beach, Cosey Beach Ave, East Haven. A sandy beach with a picnic area. Bocce ball and beach volleyball courts. There are showers and a pavilion. Parking fee. 203-468-3250

East Wharf Beach, East Wharf Rd. and Middle Beach Rd., Madison. Approximately 1.8 acres in size, this beach features a walking/fishing pier and a former shipbuilding site on Long Island Sound. 203-245-5623

Gulf Beach, Gulf St., Milford. 203-783-3280

Hammonasset Beach State Park, 1288 Boston Post Rd., Madison. A visit to Hammonasset Beach State Park is more than just another day at the beach. Connecticut's largest shoreline park offers over 2 miles of beach to enjoy swimming, strolling along the boardwalk, or just relaxing in the sun and surf. Daily 8 a.m.-sunset. 203-245-2785. ctparks.com

Jacob's Beach, Seaside Ave., Guilford. 25-acre beach on Long Island Sound with a playground, boardwalk, volleyball, basketball, outdoor showers, and more. Daily fee. 203-458-8068

Lighthouse Point Park, 2 Lighthouse Rd., New Haven. Swimming, natural history displays, nature trails, a picnic grove, a bird sanctuary, and an antique carousel are highlights of this 82-acre park on Long Island Sound. Seasonal. Gates open 7 a.m.-sunset year-round. Carousel, weekends & holidays noon-4 p.m. Out-of-state parking fees. 203-946-8019

Silver Sands State Park, 1 Silver Sands Pkwy., Milford. Beach-goers see Charles Island from the shore, where legend has it that Captain Kidd buried treasure. Take a stroll along the boardwalk. 203-735-4311, ctparks.com

Walnut Beach, E. Broadway, Milford. Walnut Beach features sand for sunbathers and a pier for fishing. 203-783-3280

West Wharf Beach, W. Wharf Rd., Madison. Approximately 1.8 acres in size, West Wharf Beach was once a shipbuilding site on Long Island Sound. 203-245-5623

West Haven Town Beaches, Captain Thomas Blvd., West Haven. West Haven prides itself on being home to the longest



BAR Full Send Productions/Market New Haven

stretch of publicly accessible shoreline in Connecticut. The city's 3-mile beach on Long Island Sound comprises 25% of the state's public beaches. 203-937-3651

COMMUNITY CENTERS

JCC of Greater New Haven, 360 Amity Rd., Woodbridge. We provide quality programs and services that meet the social, cultural, educational, and recreational needs of everyone in the community. Activities include community development, learning, fitness & aquatics, summer camp, and youth and adult enrichment. 203-387-2424, jccnh.org

INDOOR RECREATION

Bowlero, 1717 Boston Post Rd., Milford. 203-878-4658, bowlero.com

Connecticut Sportsplex Family Fun Center, 216 Foxon Rd., North Branford. Full arcade and laser tag arena. 203-484-4383, ctsportsplex.com

Escape New Haven, 103 Whitney Ave., New Haven. Your team will have 60 minutes to escape a room by solving a series of puzzles. 860-576-9997, escapenewhaven.com

Golf Cove, 336 State St., North Haven. Virtual golf. 203-390-5994, golfcovect.com

It™ Adventure Ropes Course, 450 Sargent Dr., New Haven. Experience the world's largest indoor ropes course. 203-812-9981, itatjordans.com

Johnson's Duckpin Lanes, 2100 Dixwell Ave., Hamden. 203-248-1563, johnsonlanes.com

On Track Karting, 984 N. Colony Rd., Wallingford. High-performance karting for adults and juniors (8-15). 203-626-0464, gotime.us

PEZ Visitor Center, 35 Prindle Hill Rd., Orange. See and experience the PEZ brand in person. Over 4,000 square feet dedicated to all things PEZ! Fees. 203-298-0201, pez.com

Things To Do



Meigs Point Nature Center

Quandary, 346 Quinnipiac St., Wallingford. The escape room is set up with a theme or storyline involving a series of puzzles, riddles, codes, devices, and props. 203-619-3008, quandaryescape.com

Woodlawn Duckpin Bowling, 240 Platt Ave., West Haven. 203-932-3202, woodlawnduckpin.com

Xperiment Virtual Reality, 89 Washington Ave., North Haven. Experience the thrill of immersive and interactive virtual reality games and activities. 203-535-0828, xperimentvr.com

CLASSES, WORKSHOPS, AND LEARNING CENTERS

Connecticut Audubon Society Coastal Center, 1 Milford Point Rd., Milford. Interactive exhibits. Live reptiles. Environmental education programs. 203-878-7440, ctaudubon.org

Connecticut Children's Museum, 22 Wall St., New Haven. Eight thematic and community-inspired exhibits. 203-562-5437, childrensbuiding.org

Eli Whitney Museum, 915 Whitney Ave., Hamden. Children's hands-on learning workshop located on Eli Whitney's armory site. 203-777-1833, eliwhitney.org

Guilford Art Center, 411 Church St., Guilford. Guilford Art Center offers classes and workshops for children and adults year-round. Classes and workshops in blacksmithing, ceramics, fiber arts, glass, metalsmithing, painting, photography, stone carving, weaving, and more for adults and children. 203-453-5947, guilfordartcenter.org

Leitner Family Observatory and Planetarium, 355 Prospect St., New Haven. Outdoor telescope observing will occur after sunset on Tuesday evenings, weather permitting. 475-414-3811, leitnerobservatory.yale.edu

MakeHaven, 770 Chapel St., New Haven. Maker space with woodworking, laser cutters, 3d printers, and sewing. 203-936-9830, makehaven.org

Meigs Point Nature Center, 1288 Boston Post Rd., Madison. Environmental exhibit space and outdoor observation deck. 203-245-8743, ctaudubon.org

New Haven Pizza School, 175 Humphrey St., New Haven. New Haven Pizza School teaches you how to make world-famous New Haven-style pizza. Toss the dough, make the sauce, stretch the dough, assemble, bake, and cut the pizza. 203-506-9126, newhavenpizzaschool.com

NIGHTLIFE

168 York Street Café, 168 York St., New Haven. 203-789-1915, 168yorkstcafe.com

1928 Cocktail Club, 1016-1018 Main St., Branford. 1928ct.com

Café Nine, 250 State St., New Haven. 203-789-8281, cafenine.com

College Street Music Hall, 238 College St., New Haven. 203-867-2000, collegestreetmusichall.com

Empire-Gotham Citi Cafe Nightclub, 84 Orange St., New Haven. 203-498-2484

Firehouse 12, 45 Crown St., New Haven. 203-785-0468, firehouse12.com

The Owl Shop, 268 College St., New Haven. 203-624-3250, owlshopcigars.com

Partners Bar & Nightclub, 365 Crown St., New Haven. 203-776-1014, partnersnewhaven.com

Space Ballroom, 295 Treadwell St., Hamden. spaceballroom.com

Stella Blues, 204 Crown St., New Haven. 203-752-9764, stellabluesbar.com

Toad's Place, 300 York St., New Haven. 203-624-8623, toadsplace.com

Toyota Oakdale Theatre, 95 South Turnpike Rd., Wallingford. 203-265-1501, livenation.com

Trinity Bar & Restaurant, 157 Orange St., New Haven. 203-495-7736, thetrinitybar.com

Westville Music Bowl, 45 Yale Ave., West Haven. westvillemusicbowl.com

TOURS

CT Bike Tours, Guilford. A leisurely three-hour, 20-mile guided bike tour (with van support) along the Connecticut shoreline on quiet roads combined with a 45-minute boat tour of the Thimble Islands. 203-856-7263, ctbiketours.com.

Elm City Party Bike, New Haven. New England's only pedal-powered bar & sightseeing tour experience! A fun, social & relaxing way to see the city, bar & restaurant hop while exercising. Public and private tours are available. 888-971-3272, elmcitypartybike.com

Things To Do

GROUP TOUR/MEETINGS

Ghost Tours of New Haven, 1070 Chapel St., New Haven. 90-minute walking tour (less than one mile) of downtown New Haven featuring all things spooky. 888-377-4455, ghostsofnewhaven.com

Taste of New Haven, New Haven. Provides walking culinary tours, cooking classes, and pizza crawls in New Haven. Tour features the city's rich culture and history. Public and private tours are available. 888-975-8664, tasteofnewhaven.com

Thimble Island Cruises, see Boating.

Worth Tasting Tour, New Haven. The four-hour tour includes stops at 7-8 different restaurants and eateries. 203-415-3519, stephenfries.com/culinary-tours

Walk New Haven's Historic Cultural Neighborhoods, New Haven. Provides walking culinary tours, cooking classes, and pizza crawls in New Haven. Tour features the city's rich culture and history. Public and private tours are available. 888-975-8664, tasteofnewhaven.com

Yale Campus Tours, Yale Visitor Center, 149 Elm St., New Haven. Student-led walking tours of Yale Campus last 1 hour and 15 minutes, covering history, architecture, and student life. Visitors will see the Old Campus, residential colleges, Sterling Memorial Library, Beinecke Library, and more. See the website for the current tour schedule. Fees and reservations for groups are required two weeks before the tour. 203-432-2300, visitorcenter.yale.edu

Yale University Art Gallery, 1111 Chapel St., New Haven. FREE and open to the public. Offers public, private group, and school tours with reservations. Visit the website for details and hours. 203-432-0600, artgallery.yale.edu

Yale University Art Gallery American Furniture Study Center, 900 W. Campus Dr., West Haven. Join us on the first Friday of the month for a one-hour tour. See more than 1,300 examples of American furniture and clocks in this facility from the 17th century to the present. Registration is required. 203-432-063

NEARBY ATTRACTIONS

Brownstone Adventure Sports Park, 161 Brownstone Ave., Portland. The ultimate outdoor adventure sports park has rock climbing, wakeboarding, swimming, kayaking, snorkeling, cliff jumping, scuba diving, team building, 14 zip lines, water obstacles, and a rope swing. 866-860-0208, brownstonepark.com

Connecticut Science Center, 250 Columbus Blvd., Hartford. With more than 165 hands-on exhibits, a state-of-the-art 3D digital theater, four educational labs, and daily programs and events, the Connecticut Science Center offers endless exploration for children, teens, and adults. From physics to forensics, geology to astronomy, visitors have the sciences at their fingertips. 203-724-3623, ctsciencecenter.org

Wadsworth Mansion, 421 Wadsworth St. Middletown. Former private residence of Col. Clarence Wadsworth, landscape designed by the Olmsted brothers. A 19th-century BeauX Art style mansion, located on 103 acres with 3.5 miles of trails. 860-347-1064, wadsworthmansion.com

Canal Dock Boathouse, 475 Long Wharf Dr., New Haven. Premier event spaces overlooking New Haven harbor for 60 to 300 people. 203-946-6383, canaldock.org

ConneCtions Group Tours, Out-of-the-ordinary tours for groups. Customized or signature escorted local historical, cultural, special interest, highlights programs, ½ to multi-day receptive tours, and group itineraries. 203-656-0207, connectionsgrouptours.com

Maurice R. Greenberg Conference Center, 391 Prospect St., New Haven. Designed to accommodate various activities, from conferences and corporate retreats to receptions and dinners. 203-436-5866, greenberg.yale.edu

Visit New Haven, 28 Orange St., New Haven. We are happy to inform visitors about Greater New Haven's attractions, lodgings, and events. We can assist in developing your group tour or provide meeting or group services. (Fees apply for select services). 203-777-8550, visitNewHaven.com

Yale University Conference Services, 55 Whitney Ave. #470, New Haven. Provides conference, event, and program support services. Includes the development, promotion, and financial administration of meetings, seminars, summer programs/housing, and conferences on the Yale campus. 203-432-0465, conferencesandevents.yale.edu



DEVON MOTEL

Conveniently located off the highway, Devon Motel is a family run business founded in 1963 and has been part of Milford since. Devon Motel, your home away from home, is located near some of Milford's finest restaurants and attractions, such as Lasse's Restaurant, Dockside Brewery and downtown Milford where there is always some fun! You can also take advantage of some of the amenities offered by the motel including wi-fi and cable tv and air conditioning. Come stay at the Devon Motel for a memorable trip through Milford, Connecticut!

(203) 874-6634

438 Bridgeport Avenue, Milford, CT 06460

Annual Events 2024



Annual Meriden Daffodil Festival

SPRING

New Haven Restaurant Week

April 14-19, 2024
infonewhaven.com

Cherry Blossom Festival,

New Haven
April 14, 2024
historicwoostersquare.org

Annual Meriden Daffodil Festival

May 4 & 5, 2024
daffodilfest.com

International Festival of Arts & Ideas, New Haven

June 14-29, 2024
artidea.org

Branford Festival & Road Race

June 14-16, 2024
branfordfestival.com

SUMMER

Guilford Art Center Craft EXPO

July 19-21, 2024
guilfordartcenter.org/expo

Shoreline Jewish Festival,

Guilford
Early August
jewishshoreline.org

Orange Volunteer Firemen's Carnival

August 1-4, 2024
orangevfd.org

North Branford Annual Potato and Corn Festival

August 2-4, 2024
nbpotatofest.com

Milford Oyster Festival

August 17, 2024
milfordoysterfestival.com

Odyssey: A Greek Festival,

Orange
August 30-September 2, 2024
saintbarbara.org

Annual Faxon Law New Haven Road Race

September 2, 2024
newhavenroadrace.org

North Haven Fair

September 5-8, 2024
northhaven-fair.com

New Haven Grand Prix and Apizza Feast

September 14, 2024
newhavengp.com

The Guilford Fair

September 20-22, 2024
guilfordfair.org

Orange Country Fair

September 21 & 22, 2024
www.orangectfair.com

The Durham Fair

September 26-29, 2024
durhamfair.com

AUTUMN/HOLIDAY

New Haven Restaurant Week

October 6-11, 2024
infonewhaven.com

Annual Crèche Exhibit at the Blessed Michael McGivney Pilgrimage Center, New Haven

November-January
michaelmcgivneycenter.org

Guilford Art Center Artistry Holiday Sale of Fine Craft & Art

Mid November-December
guilfordartcenter.org

Fantasy of Lights, New Haven

Late November-Early January
goodwillnsne.org/fantasyoflights

Festival of Silver Lights at Hubbard Park, Meriden

Late November-Early January
meridenct.gov

Winter Wonderland & Santa at the Shore Line Trolley Museum,

East Haven
Weekends, December
shorelinetrolley.org

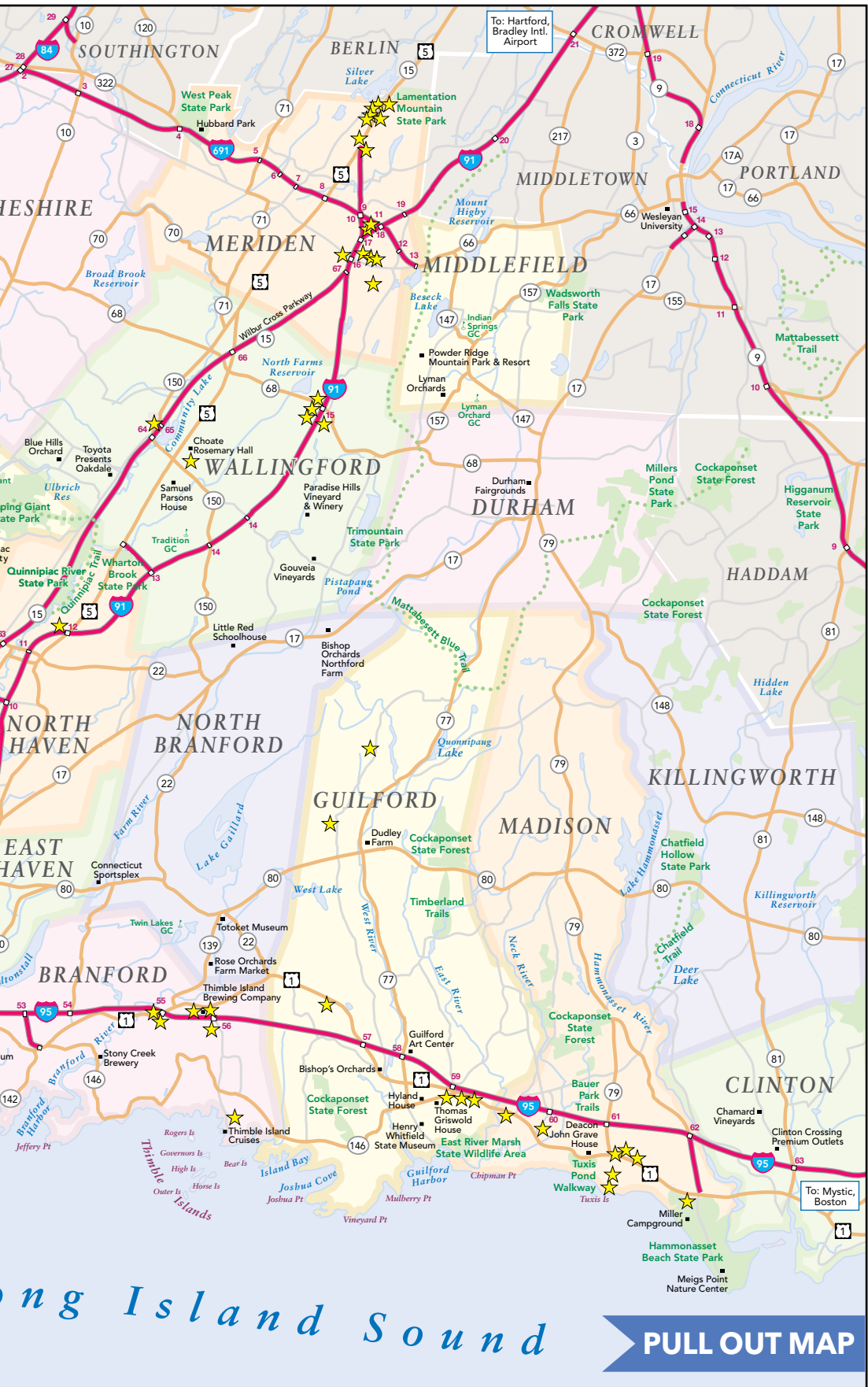
WINTER

Walter Camp National Awards Weekend, New Haven

waltercamp.org

St. Patrick's Day Parades,

Milford & New Haven
Mid March
stpatriksdayparade.org



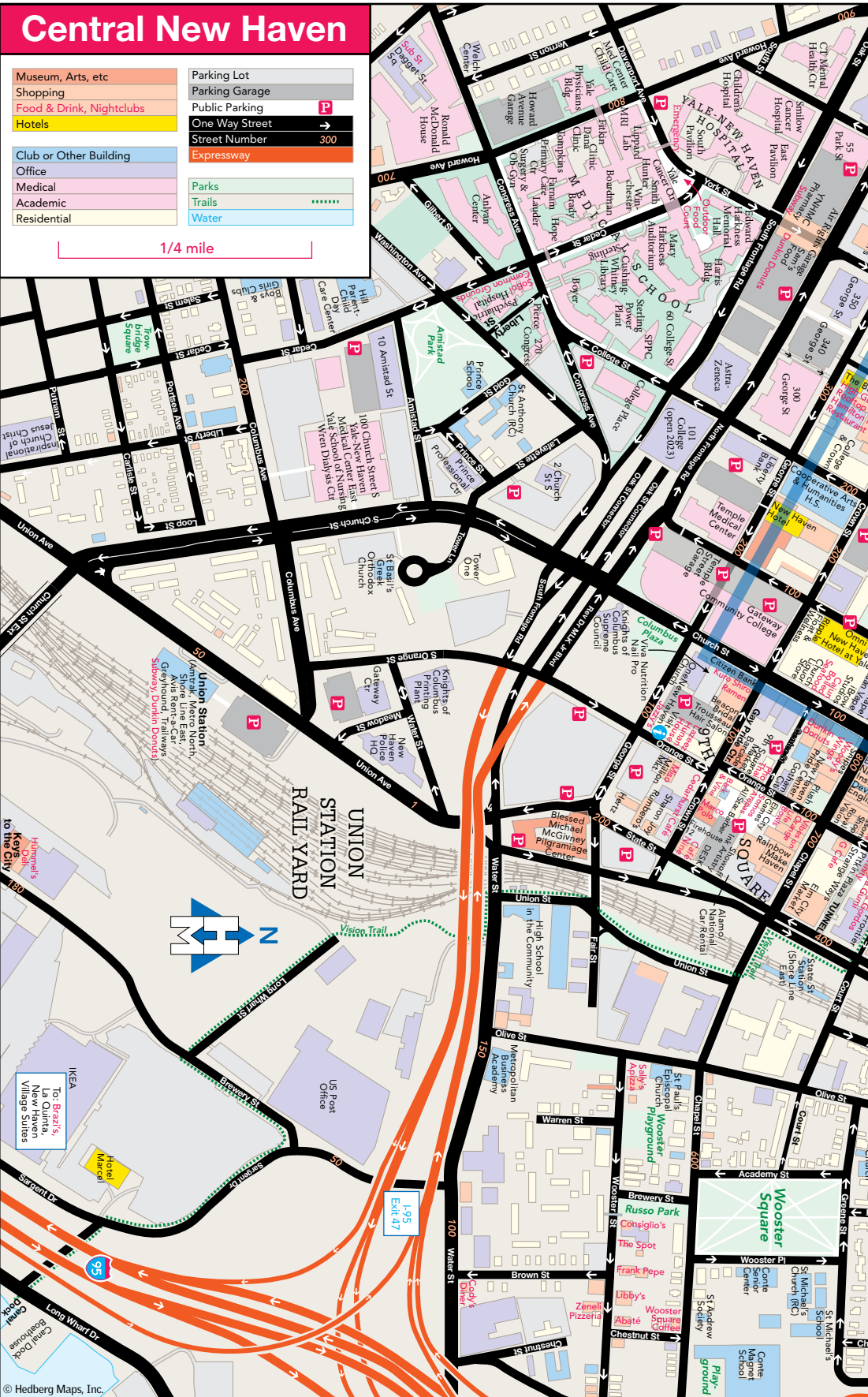
ong Island Sound

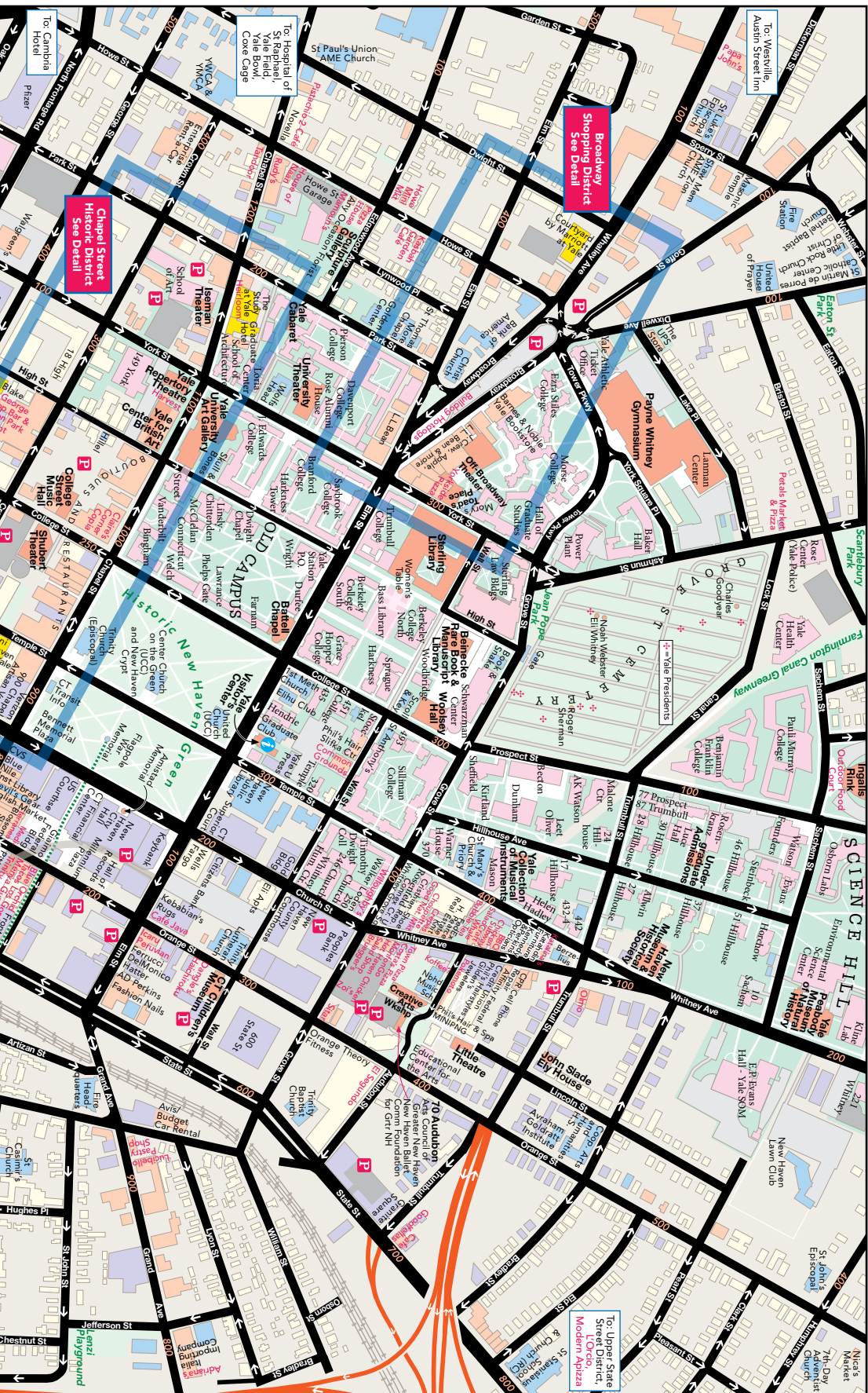
PULL OUT MAP

Central New Haven

| | |
|--------------------------|-------------------|
| Museum, Arts, etc | Parking Lot |
| Shopping | Parking Garage |
| Food & Drink, Nightclubs | Public Parking |
| Hotels | One Way Street |
| | Street Number 300 |
| | Expressway |
| Club or Other Building | Parks |
| Office | Trails |
| Medical | Water |
| Academic | |
| Residential | |

1/4 mile









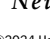






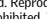
Broadway
Shopping District
See Detail

Chapel Street
Historic District
See Detail

To: Streetville
Austin Streetcar

To: Upper State
Street District,
Modern Square

Greater New Haven

-  Freeway & Interchange
 -  Primary Road
 -  Interstate Highway
 -  US Highway
 -  State Highway
 -  Parks
 -  Airports
 -  Campuses
 -  Hotels
 -  Points of Interest
 -  Golf Courses
 -  Trails
- New Haven** Towns

©2024 Hedberg Maps, Inc. All rights reserved. Reproduction by any means without permission of the publisher is prohibited. Your comments, corrections and suggestions are welcome.

Hedberg Maps, Inc. hedbergmaps.com

Visit **New Haven**

visitNewHaven.com

203-777-8550

info@visitnewhaven.com



Chapel Street Historic District

© Hedberg Maps, Inc.

Broadway Shopping District

© Hedberg Maps, Inc.

Shopping



Derek Dudek

Immerse yourself in the charm of small-town New England shopping! Nestled among picturesque streets lined with historic buildings, our quaint towns offer a shopping experience unlike any other. The town greens in Milford, Branford, Guilford, and Madison are retail centers where you can find everything from practical items to whimsical gifts. Explore the eclectic mix of boutiques, galleries, and specialty shops, each brimming with unique finds and local treasures.

For those seeking a bit of modern convenience, nearby malls and shopping districts provide a wide array of retailers and dining options, ensuring that every shopper's needs are met. Drive through the area using **Route 1**, **Route 5**, or head to **Universal Drive in North Haven**, where you'll find all the essentials. The **Connecticut Post Mall** and **Meriden Mall** are convenient stops featuring popular brand names.

If you are a book lover, you are in luck. The region is home to a variety of independent bookstores. Some of our favorites include **Whitlock Book Barn, Books & Co., Breakwater Books, RJ Julia Booksellers, Book Trader Café, Atticus Bookstore Café, and Grey Matter Books**. These unique establishments offer something for everyone. Lose yourself in the pages of rare editions, delve into niche subjects, or uncover hidden gems. With their eclectic collections ranging from vintage classics to contemporary bestsellers, each bookstore is a sanctuary for book lovers seeking the thrill of exploration.

SHOPPING AREAS

The Audubon Shop, 907 Boston Post Rd., Madison. 203-245-9056, theaudubonshop.com

Books & Company, 1235 Whitney Ave., Hamden. 203-248-9449, book-sandcohamden.com

Breakwater Books, 81 Whitfield St., Guilford. 203-453-4141, breakwater-books.indielite.org

Canvas Patch, 5 River St., Milford. 203-878-7505

Ciao Bella, 673 Boston Post Rd., Madison. 203-245-1819, shopciaobella.com

Delmonico Hatter, 47 Elm St., New Haven. 203-787-4086, delmonicohatter.com

Deux Bisous, 831 Boston Post Rd., Madison. 203-350-8381, deuxbisous.com

Devil's Gear Bike Shop, 845 Chapel St., New Haven. 203-773-9288, thedevilsgear.com

EBM Vintage, 839 Chapel St., New Haven. 203-772-1728, ebmnewhaven.com

Ella Where She Shops, 90 Broad St., Guilford. 203-453-4799, ellawheresheshops.com

Elm City Games, 71 Orange St., New Haven. 203-689-3532, elmcitygames.com

Enson's Gentlemen's Fashions, 1050 Chapel St., New Haven. 203-562-4136, ensonsmenswear.com

Evergreen Fine Crafts, 21 Boston St., Guilford. 203-453-4324, evergreen-fine-crafts.square.site

Fairhaven Furniture, 72 Blatchley Ave., New Haven. 203-776-3099, fairhaven-furniture.com

Flutterby, 55 Whitfield St., Guilford. 203-458-1941

Gentlemen's Social Outfitter + Supply, 63 Whitfield St., Guilford. 203-803-5059, gentsocial.com

Guilford Art Center, 411 Church St., Guilford. The Shop, open year-round, features unique handcrafts by over 200 American artists, including jewelry, accessories, ceramics, glasswork, fiber arts, home décor, and more. 203-453-5947, guilfordartcenter.org

Hello Boutique, 1246 Whitney Ave., Hamden. 203-562-0204, helloworldboutique.com

J. Horton, 690 Boston Post Rd, Madison. 203-779-5343, jhortonstore.com

Maggie's of Madison, 705 Boston Post Rd., Madison. 203-318-8883, maggiesofmadison.com

MELT Chocolatier, 181 Research Dr., Unit 6, New Haven. 203-931-5191, meltchocolatier.com

Milford Photo, 22 River St., Milford. 203-882-3415, milfordphoto.com

MIX Design Store, 29 Whitfield St., Guilford. 203-453-0202, mixdesignstore.com

Odeon Boutique, 918 Whalley Ave., New Haven. 203-389-8704, odeonboutique.com

R.J. Julia Booksellers & Café, 768 Boston Post Rd., Madison. 203-245-3959, rjulia.com

Seaside Home & Gifts, 172 Thimble Island Rd., Branford. 203-208-0521, seasidehomeandgifts.com

Shopping



Swish, 57 Whitfield St. # 2,
Guilford. 203-458-8121

Tracy Brent Collections,
76 Broad St., Guilford. 203-458-9100,
tracybrentcollections.com

Vera Wolf Jewelry and Gifts,
19 Boston St., Guilford. 203-458-1133,
verawolf.com

Walker Loden LTD.
shopwalkerloden.com
• 788 Boston Post Rd., Madison.
203-245-8663
• 258 Church St., New Haven.
203-865-8196

Whitlock's Book Barn, 20 Sperry
Rd., Bethany. Selling used and rare
books since 1948, Whitlock's Book Barn
operates from two weather-beaten barns
amid a scenic pasture. 203-393-1240,
whitlocksbookbarn.com

Woodbridge Running Co.,
7 Landin St., Woodbridge.
203-387-8704,
woodbridgerunningcompany.com

The Yarn Barn, 1666 Litchfield Tpke.,
Woodbridge. 203-389-5117,
theyarnbarn.com

SHOPPING AREAS

Branford Center, Branford. Shoppers
will find a little bit of everything in
Branford Center. Offering quality gift
shops, clothing boutiques, unique crafts,
and treasured antiques. Downtown
Branford is complete with sidewalk
cafés, a wonderful array of restaurants,
charming shops, and the historic Bran-
ford Green. Route 1 Branford contains
many national chain stores and eateries.
branford-ct.gov

Connecticut Post Mall, 1201
Boston Post Rd., Milford. 203-301-2240,
shopconnecticutpostmall.com

Downtown Madison, Madison
is known for its locally owned shops,
friendly purveyors, and attention to
customer service. madisonct.com

Guilford Green Merchants,
Whitfield St., Guilford. Come shop in the
boutiques and family-owned businesses
surrounding the historic town Green

or experience the
value and service
available in the
many business
centers conveniently located off Route 1,
the historic Boston Post Road. facebook.
com/GuilfordGreenDistrict

IKEA, 450 Sargent Dr., New Haven.
IKEA offers smart and affordable home
furnishings, plus our famous restaurant,
right off Exit 46 on I-95. Whether for
your home, vacation home, apartment,
dorm, or business, this is the place for all
your furnishing needs. 888-888-4532,
IKEA.com

Meriden Mall, 470 Lewis Ave., Mer-
iden. 203-235-3343, meridenmall.com

The Shops at Yale, See page 40.

Universal Drive, North Haven. Major
retailers from Barnes & Noble to Target.

Westville Village Shops, New
Haven. Historic Westville Village offers
one-of-a-kind cafes & restaurants, bou-
tiques, galleries, salons, spas, and more.
203-355-7654, westvillect.org

BEINECKE RARE BOOK AND MANUSCRIPT LIBRARY



PUBLIC EXHIBITION HALL FREE AND OPEN DAILY

121 WALL STREET, NEW HAVEN

HOURS AND INFORMATION: BEINECKE.LIBRARY.YALE.EDU

Yale UNIVERSITY LIBRARY
Beinecke Rare Book & Manuscript Library

Shopping



The Shops at Yale

The Shops at Yale

The Shops at Yale, is a unique collection of more than 65 local boutiques, national brands, cafés, restaurants & attractions with convenient parking in historic downtown New Haven. theshopsatyale.com

Any Occasion Creation Florist, 1090 Chapel St., New Haven. 203-553-4435, aocflorist.com

Apple Store, 65 Broadway, New Haven. 203-498-8950, apple.com/retail/newhaven

Atticus Bookstore Café, 1082 Chapel St., New Haven. 203-776-4040, atticusnhv.com

Book Trader Café, 1140 Chapel St., New Haven. 203-787-6147, booktradercafe.net

Campus Customs, 57 Broadway, New Haven. 203-789-1608, campuscustoms.com

Derek Simpson Goldsmith, 1094 Chapel St., New Haven. 203-787-2498, dereksimpsongoldsmith.com

Details for Hair, 1022 Chapel St., New Haven. 203-777-4447

dwell New Haven, 1022 Chapel St., New Haven. 203-691-6751, dwellnewhaven.com

FatFace, 37 Broadway, New Haven. 203-553-3141, us.fatface.com

Grey Matter Books, 264 York St., New Haven. 203-553-3180, greymatterbookstore.com

Hull's Art Supply & Framing, 1144 Chapel St., New Haven. 203-865-4855, shophulls.com

idiom Boutique, 1014 Chapel St., New Haven. 203-782-2280, idiomboutique.com

J. Crew, 29 Broadway, New Haven. 203-624-7101, jcrew.com

J. Press, 262 Elm St., New Haven. 203-772-1310, jpressonline.com

Lou Lou Boutique, 23 Broadway, New Haven. 203-687-4457, loulouboutiques.com

lululemon, 11+13 Broadway, New Haven. 475-275-9793, lululemon.com

More Amour, 1130 Chapel St., New Haven. 203-859-5266, shopmoreamour.com

Neville Wisdom, 27 Broadway, New Haven. 203-745-5009, nevillewisdom.com

Paper Source, 37 Broadway, New Haven. 475-209-3880, papersource.com

Phil's Hairstyles, 17 Broadway, New Haven. 203-865-9182

Rags for Men & Women, 1020 Chapel St., New Haven. 203-865-3824, raggsnewhaven.com

Shiana Hair, 1020 Chapel St. lower level, New Haven. 475-227-3784, shianahair.com

Sneaker Junkies, 976 Chapel St., New Haven. 203-691-8090, sneakerjunkiesusa.com

Soap-edi, 1022 Chapel St., New Haven. 203-690-0139, soapedi.com

Soulful Threads, 1022 Chapel St., New Haven. 475-441-9345, shopsoulfulthreads.com

TYCO Printing, 296 Elm St., New Haven. 203-562-9723, tycoprinting.com

Üni-Home Life, 1046 Chapel St., New Haven. 203-535-0130

The UPS Store, 33 Dixwell Ave., New Haven. 203-772-4445, theupsstore.com

Urban Outfitters, 43 Broadway, New Haven. 203-776-7444, urbanoutfitters.com

Warby Parker, 268 York St., New Haven. 888-492-7297, warbyparker.com/retail

The Yale Bookstore, a Barnes & Noble College Store, 77 Broadway, New Haven. 203-777-8440, yalebookstore.com

Here, There & Everywhere

AIR

Tweed-New Haven Airport (HVN), 155 Burr St., New Haven. Service provided by Avelo Airlines with destinations along the East Coast, Chicago, and San Juan. I-95, exit 50. 203-466-8833, flytweed.com

Bradley International Airport (BDL), Hartford. Served by eleven major carriers, with service to Europe by Aer Lingus. Approximately 45 minutes north of New Haven, I-91, exit 40. 860-292-2000, bradleyairport.com

Nearby airports include **JFK International Airport & LaGuardia International Airport** in New York (approximately 2 hours southwest of New Haven), **Newark Liberty International Airport** in New Jersey (approximately 2.5 hours southwest of New Haven), and **T.F. Green Airport** in Providence (approximately 1.5 hours east of New Haven).

RAIL

Amtrak, Union Station, New Haven. Amtrak provides Northeast Corridor, Acela, and Vermonter service at New Haven, with connecting services at New York



Tweed: Serenthos

Penn Station and Boston South Station. 800-USA-RAIL, amtrak.com/stations/nhv

Hartford Line, The New Haven-Hartford-Springfield line stations include New Haven Union Station, New Haven State Street Station, Wallingford, Meriden, Berlin, Hartford Union Station, Windsor, Windsor Locks, Springfield Union Station, with additional stations coming soon. Trains operate seven days a week, including holidays. 877-287-4337, hartfordline.com

Metro-North Railroad, Union Station, New Haven. Metro-North provides service between New Haven and Grand Central Terminal (NYC). 212-532-4900, 877-690-5114, mta.info/mnr

Shore Line East, SLE provides daily commuter service between New Haven and New London. 877-287-4337, shore-lineeast.com



*Unique Boutique
with a Nautical Touch*



Seaside Home and Gifts

172 Thimble Island Rd. Branford, Connecticut 06405, US

(203)-208-0521

www.seasidehomeandgifts.com

info@seasidehomeandgifts.com



Park New Haven is proud to be a part of the 2024 Greater New Haven Visitors & Relocation Guide.

“Park New Haven welcomes all new residents and businesses to the downtown.”

Please visit us at our website **www.parknewhaven.com** for a comprehensive list of our convenient lots and garages located throughout the City of New Haven including rates and real-time availability. Additionally, you will find information on any special parking deals that are being offered, employment applications, FAQ and contact information.

Here, There & Everywhere

FERRY

Bridgeport and Port Jefferson

Steamboat Co. provide year-round vehicle and passenger service between Bridgeport and Port Jefferson, Long Island, NY (80 minutes). 888-44-FERRY (CT only), 88844ferry.com

Cross Sound Ferry Services, Inc. provides year-round vehicle and passenger ferry service between New London and Orient Point, Long Island, NY (80 minutes). 860-443-5281 or 631-323-2525, longislandferry.com

GROUND TRANSPORTATION

GO Airport Shuttle Connecticut, 45 Connair Rd., Orange. The company provides the convenience of affordable scheduled shuttles and door-to-door private limousine service. Shuttles include LaGuardia Airport (LGA) and John F. Kennedy International Airport (JFK), as well as private limousine service to Westchester County Airport (HPN), Bradley International Airport (BDL), and Newark Liberty (EWR) Airport. 203-891-1280, 2theairport.com

LOCAL BUS TRANSPORTATION

CTrides helps commuters find the best way to get to work or school and offers information & resources for travel options throughout Connecticut. 877-287-4337, ctridges.com

CTtransit provides extensive public bus service in Greater New Haven, including Tweed-New Haven Airport and Union Station. All buses are wheelchair accessible and equipped with bike racks. 203-624-0151, cttransit.com

Union Station-Downtown Shuttle
This free shuttle connects rail passengers using Union Station to additional off-site parking locations. All shuttle trips extend to the New Haven Green, creating easy connections to all other CTtransit local bus routes in New Haven. The Union Station Shuttle operates approximately every 20 minutes, Daily, from 6:05 a.m. to 12:55 a.m. 203-624-0151, cttransit.com/union-station-shuttle-new-haven

Milford Transit provides bus service in the Milford area and connecting destinations. All buses are wheelchair accessible. 203-874-4507, milfordtransit.com

Greyhound Bus Lines Union Station, New Haven, 800-231-2222, greyhound.com

TAXIS

Heritage Taxi 203-466-6666

M7 203-777-7777, m7ride.com (Offers wheelchair-accessible taxis)

Shoreline Taxi 203-506-8294,

CAR RENTALS

Tweed-New Haven Airport, Avis and Budget are available. Lyft ridesharing is available. flytweed.com/car-rentals/

Union Station - Avis, Budget, and Zipcar are available.

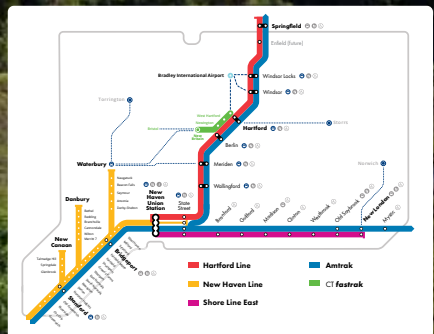
PARKING IN DOWNTOWN NEW HAVEN

Park New Haven All meters in New Haven accept U.S. coins as payment, as well as Parkmobile. Many of the meters throughout the downtown area accept Visa, Mastercard, and Discover credit cards. The meters are in effect until 9:00 p.m. Monday through Saturday (excluding holidays). After 5:00 p.m., there are no time limits associated with any meter.



Experience the ultimate Connecticut adventure and beyond with CTrail! With two convenient stations in New Haven, discover endless possibilities across the region. Explore historic landmarks, museums, shops, renowned restaurants, bars, scenic shoreline attractions, and more!

Plan your trip today using Google or Apple Maps, or visit CTrail.com for more information.



Here, There & Everywhere

Please check each meter for time and rate. 203-946-8936, parknewhaven.com

Bicycling in New Haven Bicycling is an enjoyable, inexpensive, efficient, and environmentally friendly mode of transportation. The city has an extended network of marked bike lanes and sharrows to expand and improve safe and convenient access to this means of mobility, exercise, and leisure. Biking is not allowed on sidewalks. Bikes must be equipped with lights and reflectors for riding at night. Only ride up to two across and communicate your directions with hand signals.

TRAVEL INFO

New Haven Visitor Center and Snack Shack, exit 46, Long Wharf Dr., New Haven. Conveniently located off I-95, offering tourism information, on-the-go snacks, locally made treats, and more! 203-693-1061, newhaven-snackshack.com

Branford Town Hall, 1019 Main St., Branford. 203-488-8394, branford-ct.gov

Guilford Information Kiosk, 32 Church St., Guilford. 203-671-9351, visitguilfordct.com

Hamden Visitor Center, 3074 Whitney Ave., Hamden. 203-288-6431, hamdenregionalchamber.com

Henry Whitfield House State Museum, 248 Old Whitfield St., Guilford. 203-453-2457

Madison Visitors Center, 12 School St., Madison. 203-245-7394, madisonct.com

Meriden City Hall, 142 East Main St., Room 217, Meriden. 203-630-4000, meridenct.gov/visit

Milford Regional Chamber of Commerce, 1201 Boston Post Rd. Unit 1100, Milford. 203-878-0681, milfordct.com

Town Green Special Services District, 900 Chapel St., Ste. 622, New Haven. Part diplomatic corps, part guide service, Town Green's Downtown Ambassadors are emissaries devoted to making New Haven a better place to work, visit, and do business. 203-401-4245, downtownnewhaven.com

CURRENCY EXCHANGE

Visit websites for the nearest location.

• **Keybank**, key.com/personal/ser-



Union Station: Full Send Productions/Market New Haven

vices/branch/foreign-currency.jsp

• **TD Bank**, tdbank.com/personal/foreignexchangeservices.html

• **Wells Fargo**, wells Fargo.com/foreign-exchange/international-tips

IMPORTANT PHONE NUMBERS

Police, Fire, Emergency 911

Yale New Haven Hospital - 20 York St.

- Emergency (Adult) 203-688-2222
- Emergency (Pediatric) 203-688-3333
- Smilow Cancer Hospital 855-476-4569
- Administration 203-688-4242
- Yale-New Haven Hospital Referral Line 203-688-2000

Yale New Haven Hospital - St. Raphael's Campus

- Emergency 203-789-3000
- Patient Information 203-789-3475

VA Connecticut Healthcare System - West Haven Campus 203-932-5711

Midstate Medical Center 203-694-8200

Bridgeport Hospital Milford Campus 203-876-4000

American Family Cares (AFC).

Our professional staff of physicians, x-ray technicians, and medical assistants are here to not only provide you with high-quality care but a positive experience at multiple locations. afcurgentcare.com

IMPORTANT CONNECTICUT LAWS FOR VISITORS

Cell Phone Usage in Motor Vehicles Connecticut law requires drivers 18 years of age and older to use hands-free accessories to legally use a cell phone or mobile electronic device while operating a motor vehicle. Under the law, drivers 16 or 17 years of age are prohibited from using any mobile telephone, including phones with hands-free accessories, while driving.

Also, no person shall use a hand-held mobile telephone or other electronic device or type, read, or send a text or a text message with or from a mobile telephone or mobile electronic device while operating a motor vehicle.

Liquor Laws The legal drinking age in Connecticut is twenty-one.

Seat Belts and Child Restraint Systems Connecticut law states (1)

Infants must remain rear-facing until they are a minimum of both two years and 30 pounds; (2) Toddlers must be in a forward-facing car seat with a 5-point harness until five years and 40 pounds; (3) Children should ride in a booster until they reach eight years old AND 60 pounds (they must meet both requirements); and (4) children, tweens, and teens must be in a seat belt whenever they ride in a vehicle.

Further Recommended: Children should ride in the back seat until they are 13 years old. All people and objects should be properly restrained whenever they are in a vehicle. Children who ride



Accommodations

Key:

- \$ Budget
- \$\$ Mid-Priced
- \$\$\$ Upscale

| Number of Rooms | Complimentary Breakfast | Pet Friendly | Free Parking | Microwave | Refrigerator | On-Site Restaurant | Fitness Center | Indoor Pool | Outdoor Pool | Suites | Meeting Space | Waterfront |
|-----------------|-------------------------|--------------|--------------|-----------|--------------|--------------------|----------------|-------------|--------------|--------|---------------|------------|
|-----------------|-------------------------|--------------|--------------|-----------|--------------|--------------------|----------------|-------------|--------------|--------|---------------|------------|

| BRANFORD | | | | | | | | | | | | |
|--|-----|---|---|---|---|---|---|---|---|--|---|---|
| American Inn \$ americaninn21.com 565 East Main St. I-95, exit 56 203-488-4381 | 22 | | | • | • | • | | | | | | |
| Baymont by Wyndham \$\$ wyndhamhotels.com/baymont 3 Business Park Dr. I-95, exit 56 203-871-3929 | 84 | • | • | • | • | • | | • | • | | • | • |
| Branford Motel \$ 470 East Main St. I-95, exit 55 203-488-5442 | 97 | | | • | • | • | | | | | | |
| Holiday Inn Express \$\$ ihg.com 309 East Main St. I-95, exit 55 203-488-4035 | 96 | • | | • | | • | | • | • | | • | • |
| Motel 6 \$ motel6.com 320 East Main St. I-95, exit 55 203-483-5828 | 100 | | • | • | | | • | | | | | |
| Owenego Inn \$\$ owenego.com 40 Linden Ave. I-95, exit 54 203-488-3805 | 8 | | | • | | | • | | | | • | |
| Rodeway Inn & Suites \$ choicehotels.com 81 Leetes Island Rd. I-95, exit 56 203-481-4528 | 32 | • | | • | • | • | | | | | | |
| Thimble Islands B&B \$\$\$ thimbleislandsbb.com 28 West Point Rd. I-95, exit 56 203-488-3693 | 2 | • | | • | | | | | | | | • |

| CHESHIRE | | | | | | | | | | | | |
|---|----|--|--|---|---|---|--|--|--|--|--|--|
| Cheshire Welcome Inn \$ cheshirewelcomeinn.com 1106 South Main St. (Rte. 10) I-91, exit 10 203-272-3244 | 25 | | | • | • | • | | | | | | |

| CLINTON | | | | | | | | | | | | |
|--|----|--|--|---|---|---|--|--|---|--|--|--|
| Clinton Motel \$ clintonmotel.net 163 East Main St. I-95, exit 63 860-669-8850 | 15 | | | • | • | • | | | • | | | |
| Lamplighter Motel \$ 231 East Main St. I-95, exit 63 860-669-7983 | 15 | | | • | • | • | | | | | | |
| Village Motel \$ 143 East Main St. I-95, exit 63 860-669-8403 | 17 | | | • | | | | | | | | |

| EAST HAVEN | | | | | | | | | | | | |
|---|-----|---|---|---|--|--|--|---|---|--|---|---|
| Home2 Suites by Hilton \$\$\$ hilton.com 30 Frontage Rd. I-95, exit 51 203-469-5321 | 103 | • | • | • | | | | • | • | | • | • |

| GUILFORD | | | | | | | | | | | | |
|---|----|---|---|---|---|---|--|--|--|--|---|---|
| Comfort Inn \$ choicehotels.com 300 Boston Post Rd. I-95, exit 59 203-453-5600 | 45 | • | | • | • | • | | | | | | |
| Red Roof Plus & Suites \$ redroof.com 2300 Boston Post Rd. I-95, exit 57 203-453-0123 | 32 | • | • | • | • | • | | | | | • | • |
| Tower Inn & Suites \$ towerinnsuites.com 320 Boston Post Rd. I-95, exit 59 203-453-9069 | 19 | | | • | • | • | | | | | • | |

| HAMDEN | | | | | | | | | | | | |
|---|-----|---|---|---|---|---|---|---|---|--|---|---|
| Carriage House \$\$ thecarriagehousect.com 2297 Whitney Ave. I-95, exit 10 or Rte. 15, exit 61 203-780-8388 | 43 | | | • | • | • | | | | | | |
| Clarion Hotel & Suites \$\$ choicehotels.com 2260 Whitney Ave. Rte. 15, exit 61N/62S or I-91, exit 10 203-288-3831 | 103 | • | • | • | • | • | • | • | • | | • | • |
| Residence Inn by Marriott \$\$ residence-inn.marriott.com 2308 Whitney Ave. Rte. 15 exit 61N/62S or I-91 exit 10 203-691-5127 | 127 | • | • | • | • | • | | • | • | | • | • |
| Whitney Inn & Suites \$ whitneyinn.com 3400 Whitney Ave. Rte. 15 exit 61N/62S or I-91, exit 10 203-288-2505 | 46 | • | | • | • | • | | | | | | |

| KILLINGWORTH | | | | | | | | | | | | |
|--|---|---|--|---|--|--|--|---|--|--|---|---|
| Chatfield Hollow Inn \$\$\$ chfbandb.com 10 Firetower Rd. I-95, exit 63 860-452-4147 | 5 | • | | • | | | | • | | | • | • |



Accommodations

Key:
\$ Budget
\$\$ Mid-Priced
\$\$\$ Upscale

| | Number of Rooms | Complimentary Breakfast | Pet Friendly | Free Parking | Microwave | Refrigerator | On-Site Restaurant | Fitness Center | Indoor Pool | Outdoor Pool | Suites | Meeting Space | Waterfront |
|--|-----------------|-------------------------|--------------|--------------|-----------|--------------|--------------------|----------------|-------------|--------------|--------|---------------|------------|
| MADISON | | | | | | | | | | | | | |
| Beech Tree Cottages \$\$ beectreecottages.com 1187 Boston Post Rd. I-95, exit 62 203-245-2676 | 8 | | | • | • | • | | | | | | | |
| Crescent Motel & Antique Shop \$ 60 Boston Post Rd. I-95, exit 60N/59S 203-245-9145 | 10 | | | • | • | • | | | | | | | |
| Cristy's Madison Inn & Restaurant \$\$ cristysmadison.com 73 West Wharf Rd. I-95, exit 61 203-245-7377 | 6 | | | • | | | • | | | | | | |
| The Homestead \$\$\$ homesteadmadison.com 391 Boston Post Rd. I-95, exit 62 203-245-0212 | 10 | • | | • | | | | | | | | | |
| Inn at Lafayette \$\$ innatlafayette.com 725 Boston Post Rd. I-95, exit 61 203-245-7773 | 5 | | | • | | | • | | | | • | • | |
| Madison Beach Hotel by Hilton \$\$\$ madisonbeachhotel.com 94 West Wharf Rd. I-95, exit 61 203-245-1404 | 34 | | | | | | • | • | | | | • | • |
| Scranton Seahorse Inn \$\$ scrantonseahorseinn.com 818 Boston Post Rd. I-95, exit 61 203-245-0550 | 7 | • | • | • | • | • | | | | | • | • | |
| MERIDEN | | | | | | | | | | | | | |
| Comfort Inn & Suites \$ choicehotels.com 900 East Main St. I-91, exit 17 203-440-9600 | 104 | • | | • | • | • | | • | | | • | • | |
| Extended Stay America \$ extendedstayamerica.com 366 Bee St. I-91, exit 16 203-630-1927 | 104 | • | • | • | • | • | | | | | • | | |
| Holiday Inn Express & Suites \$ ihg.com 2104 North Broad St. I-91, exit 17 203-443-5700 | 91 | • | | • | • | • | | • | • | | • | • | |
| The Inn \$ 1102 East Main St. I-91, exit 16 203-634-4700 | 64 | | | • | | | | | | | | | |
| Quality Inn & Suites \$ choicehotels.com 2090 North Broad St. I-91, exit 17 203-440-9770 | 34 | • | | • | • | • | | • | | | • | • | |
| Red Roof Inn \$ redroof.com 10 Bee St. I-91, exit 16N/17S or Rte. 15, exit 67 203-235-5154 | 124 | | • | • | • | • | | • | | | | • | |
| MIDDLEFIELD | | | | | | | | | | | | | |
| Bestway Inn \$ 31 Meriden Rd. I-91, exit 18 860-347-6955 | 25 | • | | • | • | • | | | | | | | |
| MILFORD | | | | | | | | | | | | | |
| Devon Motel \$ 438 Bridgeport Ave. I-95, exit 34 203-874-6634 | 35 | | | • | | | | | | | | | |
| Hampton Inn \$\$ hilton.com 129 Plains Rd. I-95, exit 36 203-874-4400 | 148 | • | | • | | | | • | | | | • | |
| Hilton Garden Inn \$\$ milford.hgi.com 291 Old Gate Ln. I-95, exit 40 203-783-9988 | 120 | | | • | • | • | • | • | • | | • | • | |
| Holiday Inn Express & Suites \$ ihg.com 278 Old Gate Ln. I-95, exit 40 203-877-9411 | 94 | • | | • | • | • | | • | • | | • | • | |
| Hyatt Place \$\$ milford.place.hyatt.com 190 Old Gate Ln. I-95, exit 40 203-877-9800 | 86 | • | • | • | • | • | • | • | | | • | • | |
| Lily Pad B&B \$\$ 44 Prospect St. I-95, exit 39A 203-876-9996 | 3 | • | | • | | | | | | | | | |
| Mayflower Motel \$ mayflower-motel.com 219 Woodmont Rd. I-95, exit 40 203-878-6854 | 80 | | | • | • | • | | | | | | | |
| Milford Inn \$ 345 Old Gate Ln. I-95, exit 40 203-874-2116 | 60 | | | • | | | | | | | | | |
| Motel 6 \$ motel6.com 111 Schoolhouse Rd. I-95, exit 35 203-877-8588 | 104 | | | • | • | • | • | • | | • | | | |
| Red Roof Inn \$ redroof.com 10 Rowe Ave. I-95, exit 35 203-877-6060 | 109 | | | • | • | • | | | | | | | |
| Residence Inn by Marriott \$\$ marriott.com/bdrrr 62 Rowe Ave. I-95, exit 35 203-283-2100 | 74 | • | • | • | • | • | | • | | • | • | • | |
| Shoreline Motel \$ shoreline-motel-milford.edan.io 735 Boston Post Rd. I-95, exit 37 203-876-8556 | 32 | | | | | | | | | | | | |
| Springhill Suites by Marriott \$ marriott.com/bdrsh 50 Rowe Ave. I-95, exit 35 203-283-0200 | 124 | • | | • | • | • | | • | • | | • | | |
| Super 8 by Wyndham \$ wyndhamhotels.com 1015 Boston Post Rd. Rte. 15, exit 54 or I-95, exit 39A 203-878-3575 | 50 | • | | • | • | • | | | | | | | |



Accommodations

Key:

- \$** Budget
- \$\$** Mid-Priced
- \$\$\$** Upscale

| Number of Rooms | Complimentary Breakfast | Pet Friendly | Free Parking | Microwave | Refrigerator | On-Site Restaurant | Fitness Center | Indoor Pool | Outdoor Pool | Suites | Meeting Space | Waterfront |
|-----------------|-------------------------|--------------|--------------|-----------|--------------|--------------------|----------------|-------------|--------------|--------|---------------|------------|
|-----------------|-------------------------|--------------|--------------|-----------|--------------|--------------------|----------------|-------------|--------------|--------|---------------|------------|

NEW HAVEN

| | | | | | | | | | | | | |
|---|------------|---|---|---|---|---|---|---|---|---|---|---|
| The Blake Hotel \$\$\$ theblakenewhaven.com 9 High St. I-95, exit 47 or I-91, exit 1 203-390-5352 | 108 | | • | | • | • | • | | | • | • | |
| Cambria Hotel \$\$ choicehotels.com 20 Dwight St. I-95, exit 1 203-903-2999 | 130 | | • | | | | • | • | | | | • |
| Courtyard by Marriott - New Haven at Yale \$\$\$ marriott.com/hvndt 30 Whalley Ave. I-95, exit 47 or I-91, exit 3 203-777-6221 | 207 | | | | • | • | • | • | | | • | • |
| The Elm City Club \$\$\$ elmcityclub.com 155 Elm St. I-95 exit 47 or I-91, exit 1 203-624-3197 | 21 | • | • | • | • | • | • | | | | • | |
| Graduate \$\$\$ graduatehotels.com/new-haven 1151 Chapel St. I-95, exit 47 or I-91, exit 1 475-207-7070 | 72 | | | | | | • | | | | • | • |
| Hotel Marcel \$\$\$ hotelmarcel.com 500 Sargent Dr. I-95, exit 46 203-780-7800 | 165 | | • | • | | • | • | • | | | • | • |
| La Quinta Inn & Suites by Wyndham \$ laquintanewhaven.com 400 Sargent Dr. I-95, exit 46 203-562-1111 | 152 | • | • | • | • | • | • | | • | • | • | |
| New Haven Hotel \$\$ newhavenhotel.com 229 George St. I-95, exit 47 or I-91, exit 1 203-498-3100 | 135 | | • | | | • | | • | | | • | • |
| New Haven Inn \$ 100 Pond Lily Ave. Rte. 15, exit 59 203-387-6651 | 78 | • | • | • | | | | | | | • | • |
| New Haven Stays \$ newhavenstays.com 139 Orange St. I-91, exit 3 203-654-9911 | 10 | | | | • | | | | | | • | |
| New Haven Village Suites \$\$ newhavenvillagesuites.com 3 Long Wharf Dr. I-95, exit 46 203-777-5337 | 112 | • | • | • | • | • | | • | | | • | • |
| Omni New Haven Hotel at Yale \$\$\$ omninewhaven.com 155 Temple St. I-95, exit 47 or I-91, exit 1 203-772-6664 | 306 | | • | | • | • | • | | | | • | • |
| Regal Inn \$ 1605 Whalley Ave. Rte. 15, exit 59 203-389-9505 | 79 | | | • | | | | | | | | |
| The Study at Yale \$\$\$ thestudyat Yale.com 1157 Chapel St. I-95, exit 47 or I-91, exit 1 203-503-3900 | 124 | | | | | | • | • | | | • | • |
| Three Judges Motor Lodge \$ 1560 Whalley Ave. Rte. 15, exit 59 203-389-2161 | 35 | | | • | • | • | | | | | | |

NORTH HAVEN

| | | | | | | | | | | | | |
|---|------------|---|---|---|---|---|---|---|---|--|---|---|
| Best Western Plus \$\$ bwnorthhaven.com 201 Washington Ave. I-91, exit 12 203-239-6700 | 143 | • | • | • | • | • | • | • | • | | • | • |
|---|------------|---|---|---|---|---|---|---|---|--|---|---|

ORANGE

| | | | | | | | | | | | | |
|--|------------|---|--|---|---|---|---|---|--|---|---|---|
| Courtyard by Marriott \$\$ marriott.com/hvnco 136 Marsh Hill Rd. I-95, exit 41 203-799-2200 | 121 | | | • | • | • | • | • | | • | • | • |
| Homewood Suites by Hilton \$\$ hilton.com 99 Marsh Hill Rd. I-95, exit 41 203-553-9148 | 121 | • | | • | • | • | • | • | | | • | • |

WALLINGFORD

| | | | | | | | | | | | | |
|--|------------|---|---|---|---|---|---|---|---|---|---|---|
| Courtyard by Marriott \$\$ marriott.com/hvnwa 600 Northrop Rd. I-91, exit 15 203-284-9400 | 149 | | | • | • | • | • | • | • | | • | • |
| Fairfield Inn \$\$ fairfieldinn.com/hvnfw 100 Miles Dr. I-91, exit 15 203-284-0001 | 119 | • | | • | • | • | | • | | • | | |
| Hilton Garden Inn \$\$ hilton.com 1181 Barnes Rd. I-91, exit 15 203-284-0000 | 139 | | | • | • | • | • | • | • | | • | • |
| Homewood Suites by Hilton \$\$ wallingford.homewoodsuites.com 90 Miles Dr. I-91, exit 15 203-284-2600 | 104 | • | • | • | • | • | | • | • | | • | • |

WEST HAVEN

| | | | | | | | | | | | | |
|--|------------|---|--|---|---|---|--|---|---|--|---|---|
| Best Western Executive Hotel \$\$ bestwestern.com 490 Saw Mill Rd. I-95, exit 42 203-933-0344 | 100 | • | | • | • | • | | • | • | | | |
| Econo Lodge \$ choicehotels.com 370 Highland St. I-95, exit 42 203-285-6010 | 79 | • | | • | • | • | | | | | | • |
| Hampton Inn & Suites \$\$ hilton.com 510 Saw Mill Rd. I-95, exit 42 203-932-0404 | 98 | • | | • | • | • | | • | • | | • | • |
| Super 8 Motel \$ wyndhamhotels.com 7 Kimberly Ave. I-95, exit 44 203-200-7797 | 82 | • | | • | • | • | | | | | • | |

2024

GREATER NEW HAVEN Relocation Guide

rexdevelopment.com

LIVING IN GREATER NEW HAVEN 49

- Regional Map
- Housing
- Rental Housing Cost Comparison

REGIONAL ECONOMIC OUTLOOK 52

- Employment in New Haven County
Jobs by Key Sectors
- Leading Employers

FLOURISHING SECTORS 56

- Healthcare
- Biomedical & Life Sciences
- Higher Education
- Advanced Materials & Manufacturing
- Arts, Culture & Tourism
- Technology
- Entrepreneurs

WORKFORCE 62

- Educational Attainment
- Getting the Right Skills
- Demographics

RESOURCES 64

- Economic Development
Resources by Town
- State of Connecticut Resources
- Chambers of Commerce
- Coworking Spaces
- Education
- Community Centers



COURTYARD[®]

BY MARRIOTT

MARRIOTT
BONVOY[™]

It's A New Stay!

136 Marsh Hill Rd

Orange, CT 06477

(203) 799-2200

Marriott.com/HVNCO

- ◆ Bistro + Bar Open Daily
- ◆ Complimentary Parking
- ◆ Event Rooms Spanning Across 3,500 Sq. Ft. of Flexible Space
- ◆ Outdoor Pool
- ◆ Minutes from Downtown New Haven and Downtown Milford



HOMewood SUITES by Hilton[™]



- ◆ Extended Stay Rates
- ◆ Complimentary Parking
- ◆ Complimentary Evening social
- ◆ Heated Indoor Swimming Pool
- ◆ Complimentary Breakfast Buffet

All The Comforts Of Home!

99 Marsh Hill Rd

Orange, CT 06477

(203) 553-9148

Orangenewhaven.homewoodsuitesbyhilton.com



Living In Greater New Haven



Hammonasset Beach State Park/Elizabeth Keifer

Greater New Haven is a one-of-a-kind community that offers a blend of historical charm, cultural richness, and economic opportunities. Located on Connecticut's shoreline, this vibrant community caters to varied interests and lifestyles, making it an ideal place to call home.

One of the most notable aspects of Greater New Haven is its creative community, which provides an array of enriching experiences for its residents. The area boasts world-class museums like the Yale University Art Gallery and the Yale Peabody Museum, offering access to a wealth of artistic and educational experiences. The region's theaters, music venues, and annual festivals also contribute to a sense of community and shared appreciation for the arts.

Greater New Haven is also renowned for its breathtaking natural beauty. Whether you're an outdoor enthusiast or simply looking for a picturesque place to relax, we have something for everyone. From parks and beaches to hiking trails, there are ample opportunities to connect with nature and enjoy the scenic beauty of places like Hubbard Park, Sleeping Giant State Park, or Long Island Sound.

The region is also a bustling hub of economic activity, with numerous opportunities available in a wide range of industries. Home to Yale University and various healthcare facilities, the job market is strong. Its convenient location between New York City and Boston makes it an ideal destination for professionals commuting to these large cities. Whether you're interested in working in higher education, manufacturing, bioscience, or the healthcare sector, plenty of job opportunities are available in the region.

Our community is dedicated to education, healthcare, and economic growth, providing an engaging living experience. Greater New Haven's blend of a rewarding quality of life and economic vitality makes it an exceptional and highly sought-after location to establish your home and life. We look forward to you joining our vibrant and welcoming community.

Take your next step toward a thriving independent adult life!

Chapel Haven Schleifer Center is an award-winning transition program and lifelong community devoted to independent lives for adults with social and developmental disabilities.

Check out our programs and learn more about our mission at www.chapelhaven.org



AN ARABIAN MEDIA GROUP



For additional information, contact:
Christy Chandler, Director of Admissions
cchandler@chapelhaven.org or 203.397.1714, x185

 Find Chapel Haven Schleifer Center on Facebook



Housing



Branford Shoreline: Mimi Dudley

Discover your ideal home in Greater New Haven, where diverse housing options meet the needs of every lifestyle. From historic residences with timeless charm to modern, sleek apartments, the housing landscape in Greater New Haven caters to a wide range of preferences.

Explore the tree-lined streets of established neighborhoods, where historic homes showcase architectural elegance and a sense of community. Quaint suburbs offer spacious houses with ample yards, creating an ideal environment for families to thrive.

For those seeking the vibrant energy of city living, downtown New Haven boasts a collection of contemporary apartments and condominiums. Enjoy the convenience of being steps away from world-class dining, cultural institutions, and bustling city life. Modern

amenities and sleek designs define the urban living experience in Greater New Haven.

The region's commitment to sustainable and inclusive development is evident in the availability of eco-friendly housing options. Discover communities that prioritize green spaces, energy efficiency, and a harmonious coexistence with the environment.

Whether you're a young professional, a growing family, or someone looking to embrace retirement in a welcoming community, Greater New Haven has the perfect home for you. Experience the blend of tradition and innovation, where housing options cater to your lifestyle, and each residence is a gateway to this exceptional region. Find your dream home in Greater New Haven and become part of a community that values your unique way of living.

RENTAL HOUSING COST COMPARISON

| LOCATION | AVERAGE RENT | AVERAGE APARTMENT SIZE |
|----------------------|--------------|------------------------|
| NEW HAVEN, CT | \$2,112 | 776 sq. ft. |
| NEW YORK, NY | \$4,768 | 703 sq. ft. |
| BOSTON, MA | \$3,926 | 812 sq. ft. |

The rise of remote and hybrid work models has created new possibilities for employees seeking flexibility in their living arrangements. With access to rail services connecting to major cities such as New York, Boston, and Hartford, Greater New Haven offers an ideal location for those who want to work in these cities while enjoying the benefits of suburban living. One of the standout advantages of living in this area is the significant savings on rental costs, which can be up to 50% less than what you'd pay in Manhattan - according to data from September 2023 provided by rentcafe.com. Greater New Haven is a practical option to enhance your quality of life while pursuing your professional goals.



Winchester Lofts

Regional Economic Outlook



Quinnipiac University/Denis Tangney Jr.

The region's six colleges and universities, including the prestigious Yale University, are renowned for their focus on innovation, research, and development. This emphasis on a knowledge-based economy and access to global thought leaders makes the region an ideal location for entrepreneurs. Yale University, with its cutting-edge research and state-of-the-art facil-

ities, has been a catalyst for successful spin-offs, particularly in bioscience. The National Institute of Health, a significant funder of research studies in the region, has provided a substantial \$2.8 billion for R&D in the past five years.

The region's healthcare sector is experiencing significant growth. Both Yale New Haven Health and Hartford Healthcare are expanding their presence, anticipating the need for additional healthcare services as the population ages. They are also embracing new technologies, such as telehealth, to enhance service delivery. Notably, Yale New Haven Health is investing in a new Neuroscience Institute in New Haven, a project expected to cost \$838 million.

Investment in new commercial and residential development is on the rise, with many developers returning to the region after experiencing a strong return on previous investments. The demand for residential and bioscience space is expected to remain steady in the foreseeable future.

Connecticut's manufacturing sector continues to thrive, bolstering the state's economy and creating numerous job opportunities. The state's success is evident in its diverse range of manufacturing sectors, including aerospace, defense, biotech, and advanced manufacturing. The region's skilled workforce, strategic location, and supportive business environment have attracted investments from both domestic and international companies, driving growth and competitiveness in the manufacturing sector. Ongoing initiatives and partnerships aimed at promoting workforce development and fostering collaboration between industry and academia further enhance Connecticut's position as a hub for manufacturing excellence.

<https://report.nih.gov/award>

TWO CHAMBERS ARE HERE FOR YOUR BUSINESS!



QUINNIPIAC
CHAMBER OF
COMMERCE

Business Advocacy | Marketing & Promotion
Networking | Educational Forums
Leadership Training | Public Policy
Event Sponsorship & Exposure



GNHCC.COM



QUINNCHAM.COM



GET STARTED TODAY!

Contact: Gary Ciarleglio,
Vice President, Sales and Relationship Management
gary@gnhcc.com, 203-645-2849



Southern
*is your next
 destination for*
Exceptional
Hosting

WE OFFER A WIDE SELECTION OF EVENT SPACE

ideal for corporate and non-profit meetings, conferences, workshops, or large-scale events. Located just minutes from downtown Hamden, our state-of-the-art facilities offer guests an exceptional setting, free parking, and dedicated staff to make your event a success. We have everything you need, here at Southern.



- Full catering services
- Grand Ballroom
- Lyman Center for the Performing Arts (seating up to 1,500, plus art gallery)
- Seminar room
- 200-seat theater
- Meeting rooms
- Lecture halls
- Academic classrooms
- Athletics facilities
- Affordable on-campus overnight lodging during the summer
- Free parking

Want More Information?

VISIT: hostevents.SouthernCT.edu
 EMAIL: hostevents@SouthernCT.edu
 CALL: (203) 392-5500



527 Elm St. New Haven, CT | 475-321-5150

AFCUrgentCare.com/new-haven/

**WE TREAT
 SPRAINS &
 STRAINS
 ...AND EVERYTHING ELSE!**

URGENT CARE X-RAY ON-SITE LAB SERVICES ON-SITE **afc** PHYSICALS & VACCINATIONS OCCUPATIONAL MEDICINE COVID-19 TESTING



Employment in New Haven County

Greater New Haven is fortunate to have five solid sectors supporting our economy: healthcare, higher education, bioscience, manufacturing, and arts, culture, and tourism. These industries, and others, are actively seeking employees. While there are career opportunities in most fields, registered nurses are the most in-demand

occupation.

Many employers continue to offer hybrid work environments, as well as schedule adjustments to accommodate child/eldercare, transportation, and other barriers to workforce participation.

TOP 10 INDUSTRIES BY EMPLOYMENT IN NEW HAVEN COUNTY

| INDUSTRY | NUMBER OF ESTABLISHMENTS | NUMBER OF EMPLOYEES | % OF TOTAL EMPLOYEE | ANNUAL AVERAGE WAGE BY JOB |
|--|--------------------------|---------------------|---------------------|----------------------------|
| Health Care and Social Services | 4,881 | 77,177 | 21.60% | \$61,634 |
| Educational Services | 499 | 50,882 | 14.20% | \$80,080 |
| Retail Trade | 2,774 | 39,249 | 11.00% | \$38,512 |
| Manufacturing | 1,117 | 28,396 | 7.90% | \$74,177 |
| Accommodation and Food Services | 2,126 | 24,152 | 6.70% | \$24,568 |
| Admin. & Support & Waste Mgt. & Rem. Services | 1,464 | 20,772 | 5.80% | \$53,794 |
| Transportation & Warehousing | 542 | 19,091 | 5.30% | \$48,262 |
| Professional, Scientific, and Technical Services | 2,874 | 16,024 | 4.50% | \$114,534 |
| Construction | 2,063 | 15,089 | 4.20% | \$74,798 |
| Wholesale Trade | 1,821 | 13,586 | 3.80% | \$92,495 |



Town Green District

Keeping Downtown New Haven a vibrant and exciting place to live, work, learn and play.



Town Green District
Downtown New Haven



@DowntownNHV

Leading Employers



The region boasts several leading employers in the healthcare, biomedical/life sciences, higher education, and manufacturing sectors. These sectors provide highly competitive salaries and exceptional prospects for career advancement. Additionally, there is a significant need for engineers and construction workers due to the extensive upgrades in transportation and communication infrastructure.

| COMPANY NAME | TOWN | INDUSTRY/BUSINESS DESCRIPTION | SIZE/RANGE |
|--|-------------------------|--|-------------|
| Yale University | New Haven | Schools-Universities & Colleges Academic | 10,000+ |
| Yale New Haven Health | New Haven | Hospitals/Clinics | 10,000+ |
| Amazon | Wallingford/North Haven | Internet & Catalog Shopping/Fulfillment Center | 5,000-9,999 |
| Veterans Affairs Connecticut Healthcare System | West Haven | Hospitals/Clinics | 1,000-4,999 |
| Avangrid (United Illuminating and Southern Connecticut Gas) | Orange | Utilities | 1,000-4,999 |
| Laticrete International, Inc. | Bethany | Adhesives & Glues (Whls) | 1,000-4,999 |
| Masonicare | Wallingford | Hospitals/Clinics | 1,000-4,999 |
| Medtronic | North Haven | Surgical Appliances-Manufacturers | 1,000-4,999 |
| Assa Abloy Door Security Solutions/Sargent Manufacturing Co. | New Haven | Security Systems | 1,000-4,999 |
| Edgewell Personal Care | Milford | Home & Personal Care Products | 500-999 |
| Knights of Columbus Insurance | New Haven | Insurance | 500-999 |
| Southern Connecticut State University | New Haven | Schools-Universities & Colleges Academic | 500-999 |
| Honeywell (Fire Lite) | North Branford | Safety Equipment & Clothing-Mfrs | 500-999 |
| MidState Medical Center | Meriden | Hospitals | 500-999 |
| Quest Diagnostics | Wallingford | Laboratories-Medical | 500-999 |
| New Haven Register | New Haven | Newspapers (publishers/Mfrs) | 500-999 |
| AT&T | New Haven | Telecommunications Services | 500-999 |
| American Medical Response | New Haven | Ambulance Service | 500-999 |
| Milford Hospital | Milford | Hospitals | 500-999 |
| Visiting Nurse Assn-Homemaker | Guilford | Nurses-Registered Rn | 500-999 |



Courtesy of Avangrid

Healthcare



Yale New Haven Hospital Michael Marsland/Yale University

The healthcare industry in Greater New Haven stands as a cornerstone of both economic vitality and community well-being. The region has an extensive range of healthcare facilities, including respected academic medical centers. These institutions are among the most innovative and dynamic in the Northeast.

Yale New Haven Hospital and the Yale School of Medicine are world-renowned for their exceptional patient care and attract patients from all over the region. These institutions receive significant funding for research initiatives, which not only contribute to medical knowledge but also stimulate innovation and entrepreneurship in the local biotechnology industry.

To address workforce needs, Yale New Haven Health and four local universities help eligible students enroll in nursing programs. Fairfield, Quinnipiac, and Southern Connecticut State universities, along with Gateway Community College, aim to produce at least 557 more nurses over the next four years. A \$10 million grant will also train 1,250 patient care associates/technicians during this period at Yale New Haven Hospital. The program participants are full-time employees who receive

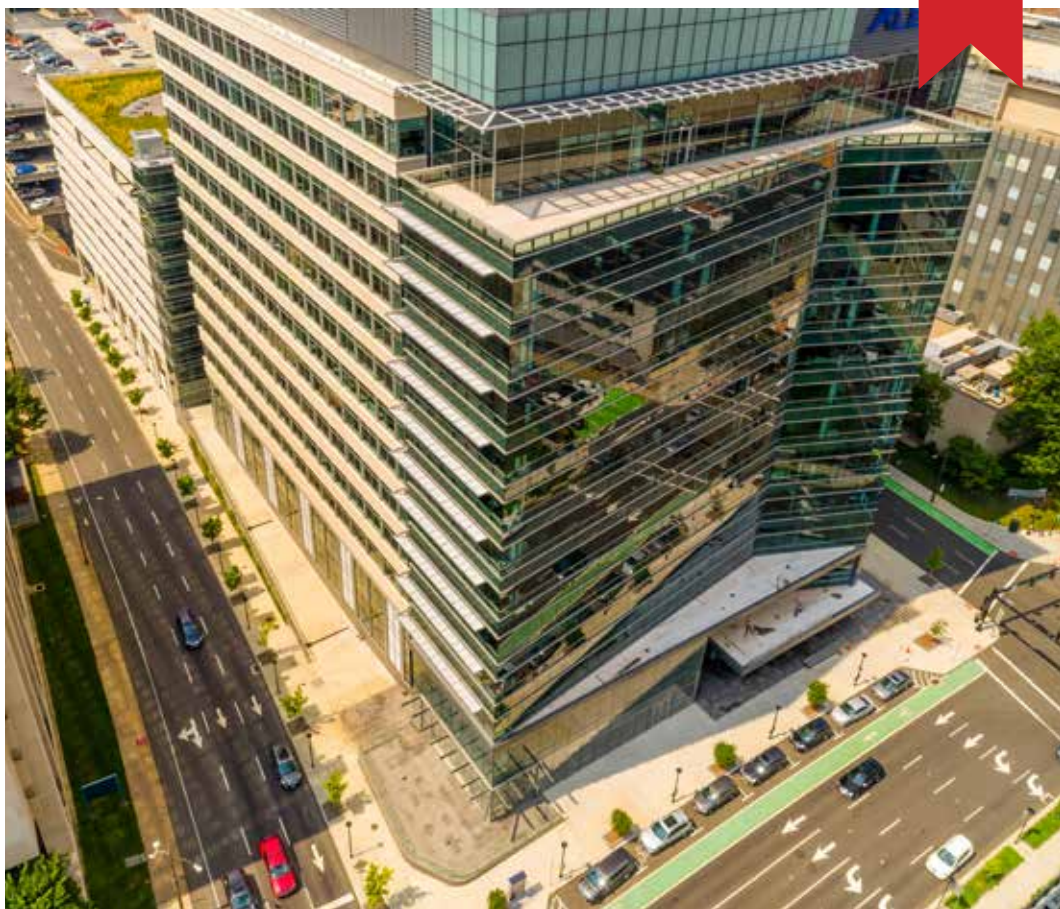
pay and benefits.

In an initiative designed to streamline care, Yale New Haven Health has launched an at home infusion pharmacy program to provide eligible patients with IV drug and nutritional therapies. Additionally, the Visiting Nurse Association Community Healthcare & Hospice has partnered with Yale New Haven Health to enhance its ability to provide high-quality home health services. Yale Medicine and Masonicare have opened comprehensive orthopedic services on Masonicare's Wallingford campus, providing access to Yale Medicine physician specialists in surgical and non-surgical interventions.

Hartford Healthcare has a significant presence in the region, with two Primary Care locations, eight Specialty Care locations, and six Urgent Care/Walk-in locations. The VA Connecticut Healthcare System provides inpatient care for veterans.

As Greater New Haven continues to evolve, its healthcare sector remains steadfast in its mission to promote health equity, foster innovation, and enhance the overall quality of life for its residents.

Biomedical & Life Sciences



100 College Street, Full Send Productions/Market New Haven

The thriving bioscience industry in Greater New Haven is truly remarkable. With Yale's scientific research serving as an anchor, the cluster encompasses both large pharmaceutical companies and small startups developing new drugs, therapies, and medical devices. The South Central Connecticut region has a strong focus on bioscience and is supported by highly skilled scientists and technicians.

This region is home to advanced bioscience research institutions, including Yale University and Yale New Haven Health System, which are at the forefront of medical advances. Biotech and pharmaceutical companies are committing to this region to develop new treatments, particularly for rare diseases. The location's proximity to New York City and Boston encourages extensive collaboration, which further fuels innovation.

More lab space for bioscience companies is being developed, especially for those ready to move into graduate space without a long-term lease. Our major construction projects, such as 101 College Street, 275 South Orange Street, Parcel B at Downtown Crossing, and Science Park, are a testament to our commitment to providing top-notch facilities and resources to the bioscience industry.

Personalized medicine, in particular, is a significant growth opportunity for the region. The Yale Center for Genomic Health is tackling the most pressing challenge in the field: how to translate increasingly powerful genomic technologies and vast data resources into meaningful improvements in healthcare in a way that equitably benefits people of all ancestry groups and ethnicities.

Higher Education



Michael Marsland/Yale University

Higher education plays a vital role in the cultural and economic vitality of Greater New Haven. The region boasts six esteemed colleges and universities, including the world-renowned Yale University, known for its academic excellence and intellectual rigor.

These institutions attract exceptional faculty and students, fostering a vibrant environment of innovation and creativity. They offer diverse higher education options, ranging from liberal arts colleges to technical institutes and community colleges, providing individuals with tailored education to achieve their career aspirations.

Colleges and universities serve as catalysts for economic growth, driving innovation, research, and development. They create highly skilled jobs, attract businesses, and stimulate economic growth, often leading to the development of new technologies and industries.

Greater New Haven's higher education institutions are a talent pipeline, producing graduates equipped with the skills and knowledge required by the evolving job market, attracting businesses seeking a skilled workforce. Greater New Haven's colleges and universities offer numerous career opportunities, with over 30,000 employees across various technical, administrative, and scholarly positions.

Moreover, these institutions provide a wealth of cultural resources to Greater New Haven, with museums, theaters, and art galleries enhancing the cultural landscape and offering access to world-class performances, exhibits, and intellectual discussions.

Local college students actively engage with the community through outreach programs, partnerships, and collaborative initiatives, contributing to community development, addressing local challenges, and promoting social responsibility among students.

| INSTITUTION | TOTAL ENROLLMENT | PHONE NUMBER |
|---------------------------------------|------------------|------------------------------|
| Yale University | 14,776 | 203-432-4771 |
| Southern Connecticut State University | 8,889 | 203-392-SCSU or 888-500-SCSU |
| Quinnipiac University | 8,788 | 203-582-8200 |
| University of New Haven | 8,819 | 203-932-7000 or 800-DIAL-UNH |
| Gateway Community College | 5,578 | 203-285-2000 |
| Albertus Magnus | 1,275 | 203-773-8550 or 800-578-9160 |
| TOTAL | 48,125 | |

Source: College Navigator, January 2024



Medtronic/rafapress

The manufacturing sector in our region is varied and includes companies that specialize in producing precision instruments for medical and aerospace industries, security systems, specialty chemicals, and fixtures in metals, plastics, and other materials. They use various technologies and processes, including additive manufacturing and 3D printing to traditional stamping and machine tooling, and more. Some of these businesses have been operating as family-owned companies for over five generations, while others are multinational corporations.

Connecticut is proactively preparing its workforce for the integration of modern technology in manufacturing. Initiatives like Connecticut's Industry 4.0 Working Group aim to coordinate between businesses, higher education, and state leaders to ensure the state has a trained workforce to meet the needs of small and mid-sized manufacturing businesses.

The Connecticut Department of Labor projects a significant increase in occupations related to industrial, mechanical, and electronics engineering by 2030. The demand for STEM graduates and technicians with certifications in fields like mechatronics is expected to rise

offering career opportunities for manufacturing professionals.

MATCH is a manufacturing training program in New Haven that offers bilingual training and pays trainees while they are training. The program is specifically designed to cater to the needs of various individuals, including women, high school graduates entering the workforce, unemployed New Haven residents, New Haven residents of color, and re-entry residents. It also offers assistance in financial literacy, housing, and energy, and career-building services to enhance employability.

Skill Up for Manufacturing is a program by Workforce Alliance and Gateway Community College. It guides unemployed and underemployed individuals into entry-level manufacturing roles in just 5 weeks. The program provides hands-on experience, potential employer interactions, a cash stipend, 175 pre-apprenticeship hours, Six Sigma certification, and an OSHA 10 safety card.

Some of the leading manufacturing employers in our region include BYK, Amphenol, Edgewell, Honeywell, Sargent/Assa Abloy, Ulbrich Steel, and Athletic Brewing.

Arts, Culture & Tourism



Hammonasset Beach State Park

The flourishing creative economy and tourism industry in Greater New Haven are fueled by its rich cultural heritage, strategic location, prestigious educational institutions, and supportive community infrastructure. By embracing creativity and collaboration, the region continues to attract visitors, stimulate economic growth, and enrich the social fabric of the community.

The area's exceptional history and vibrant arts scene serve as a magnet for creative individuals and visitors alike. From world-class museums to local galleries, theaters, and music venues, Greater New Haven offers a variety of experiences that cater to all tastes and interests. This rich environment fosters creativity and innovation, attracting artists, performers, and entrepreneurs who contribute to the dynamic creative economy of the region.

Greater New Haven's strategic location between major metropolitan areas such as New York City and Boston makes it easily accessible to tourists seeking a weekend getaway. With convenient transportation links, including Amtrak and major highways, the region is well-positioned to attract visitors from neighboring cities and beyond. Additionally, its proximity to scenic natural attractions such as

Long Island Sound and Sleeping Giant State Park enhances its appeal as a tourist destination, offering recreational opportunities for outdoor enthusiasts.

The presence of prestigious educational institutions like Yale University adds to Greater New Haven's allure. The university's renowned academic programs, research initiatives, and events contribute to the area's intellectual vibrancy and attract scholars, students, and visitors from around the world. Additionally, the university serves as a catalyst for innovation and entrepreneurship, fostering collaboration between academia, industry, and the arts to drive economic growth and creativity in the region.

The locals are committed to supporting small businesses, creative startups, and cultural initiatives to nurture the creative economy and tourism sector. Local government agencies, business organizations, and community groups work collaboratively to provide resources, funding, and infrastructure to support the growth of creative industries and tourism-related businesses. Initiatives such as ethnic festivals, artisan markets, and public art projects further enhance the region's vibrancy and attract visitors from near and far.

Entrepreneurs

If starting your own business is one of your goals when relocating to Connecticut, you will be in good company. Since 2018, the residents of Greater New Haven have launched more than 30,000 businesses.

Academic institutions foster innovation and entrepreneurship through research collaborations, technology transfer programs, and a pipeline of talented graduates. Additionally, the region has a vibrant ecosystem of startups, incubators, accelerators, and co-working spaces that support entrepreneurs and early-stage ventures. A wide array of organizations provide resources, mentorship, and networking opportunities for startups and expanding businesses.

The economy in New Haven is diverse, covering a range of industries including biotechnology, healthcare, advanced manufacturing, finance, and information technology. This diversity allows entrepreneurs to tap into different markets and collaborate across sectors. The region has access to venture capital firms, angel investors, and other funding sources that support entrepreneurial ventures. Initiatives like the Connecticut Innovations provide funding and support to early-stage startups in the state. Connecticut has implemented policies and incentives to support entrepreneurship and innovation, such as tax credits for research and development activities, loan programs, and grants for small businesses.

Yale Ventures was established by Yale University in 2022 with the aim of fostering an environment of entrepreneurship and innovation among its faculty

Quantum computing represents a paradigm shift in computational capabilities, promising to revolutionize numerous industries by tackling complex problems at an unprecedented speed. From factoring large numbers to simulating quantum systems and optimizing intricate processes, quantum computing holds the key to solving challenges that classical computers struggle with. This includes crucial areas such as cryptography, drug discovery, logistics, and materials science.

Greater New Haven is leading the quantum computing revolution in Connecticut. Yale University and the University of Connecticut are working hand-in-hand on a joint initiative, QuantumCT, to advance Connecticut's position as a center of excellence in quantum and accelerate the adoption of quantum technologies in Connecticut and beyond.

The QuantumCT Team is collaborating with broad coalition of partners from business, academia, government, the nonprofit and innovation community to lay the groundwork for expansive, equitable economic development – promising to fundamentally change how we live, work, and communicate with each other.

Quantum science has catalyzed technologies that touch every aspect of our daily lives, paving the way for remarkable innovations with profound



District

and students. It offers a range of resources such as accelerators, funding, and mentorship through programs like Venture Lab and the Blavatnik Fund. Yale Ventures encourages connections within Yale's innovation community and facilitates corporate partnerships to advance its research and educational goals. It collaborates with various innovation centers to further support entrepreneurial endeavors.

REX Development, the economic development entity for South Central Connecticut, is keen to assist entrepreneurs and startups with assistance locating space, accessing financing, tapping into the existing entrepreneurial ecosystem, and connecting the budding businessperson with industry experts, municipal economic development officials, and additional business services. Contact us, we're ready to help.

Technology



Yale Quantum Lab, Andrew Hurley/Yale University

implications on society. Drawing on research excellence at Yale and UConn and a growing innovation ecosystem, QuantumCT is creating a national competitive advantage in an emerging technology domain. Quantum technology has the potential to transform hundreds of applications, from smartphones and navigation systems to drug therapy and advanced computers. This technology will impact key economic drivers in the region, including life sciences, healthcare, and manufacturing. By harnessing the research prowess of Yale and UConn and fostering a vibrant innovation ecosystem, QuantumCT aims to establish a competitive advantage for the nation in quantum technology.



Workforce

The Greater New Haven area is renowned for its steady stream of college graduates, yet ensuring a high-quality and inclusive workforce pipeline remains a top priority for the region and the state. Spearheading this effort, the Governor's Workforce Council is implementing measures such as Regional Sector Partnerships (RSP), targeting key industries, including healthcare, bioscience, manufacturing, and STEM. These partnerships aim to address workforce shortages by offering training, engaging employers, and fostering innovation. With a dynamic job market and opportunities in prestigious institutions, advanced manufacturing, tech-driven industries, and cultural organizations, Greater New Haven provides a fertile ground for both seasoned professionals and recent graduates to pursue fulfilling careers.

EDUCATIONAL ATTAINMENT OF THE POPULATION 25 YEARS AND OLDER IN GREATER NEW HAVEN, 2022

| | POPULATIONS 25 YEARS AND OLDER | NO HIGH SCHOOL DIPLOMA | HIGH SCHOOL DIPLOMA | BACHELOR'S DEGREE OR HIGHER |
|-------------|-----------------------------------|---------------------------|------------------------|--------------------------------|
| Region | 395,812 | 8.6% | 91.4% | 36.6% |
| Connecticut | 2,520,790 | 8.9% | 91.1% | 40.5% |

Source: U.S. Census Bureau, Latest American Community Survey 5-Year Estimates (B15002)

STARTING A CAREER

Collaboration among colleges, universities, Workforce Alliance, and local boards of education is preparing students for existing and future jobs. Program development is created in concert with employers, government agencies, and local municipalities. While Greater New Haven is best known for its degree programs, there are a myriad of pathways to success.

Gateway Community College

Connecticut community colleges offer diverse certificate programs with targeted curricula, ideal for those seeking to acquire skills quickly. By providing certificate programs in various sectors like healthcare, technology, business, hospitality, and more, community colleges in Connecticut play a crucial role in preparing students for the workforce, facilitating economic development, and bridging skill gaps in the state's industries.

Getting Your Degree

Gateway Community College graduates can transition to Connecticut State Colleges and Universities. The CT Guarantee also allows for a seamless transfer of credits to private colleges and universities like Albertus Magnus, Quinnipiac University, and the University of New Haven.

Workforce Alliance (American Jobs Center) workforcealliance.biz

Workforce Alliance should be the first stop for both job seekers and businesses looking to hire or upskill their current workforce.

Skill Up for Manufacturing is designed to quickly channel unemployed and underemployed people into entry-level manufactur-

ing jobs by providing the fundamentals that employers need in as little as 5 weeks. The program was designed with manufacturing employers who interact with students and discuss job opportunities. The program includes:

- Free 5-Week hybrid classroom & hands-on training
- Cash stipend during training
- Minimum 175 pre-apprenticeship hours
- Six Sigma certification
- OSHA 10 safety card
- Job development

The Health Careers Advancement Program (HCAP) provides tuition assistance, professional development, and job placement to eligible job seekers. Individuals who have prior healthcare industry certifications can get help to return to school, add more skills and move up the career ladder!

Hospitality Career Initiative is a partnership between the University of New Haven and the New Haven-based nonprofit Workforce Alliance, providing an immersion into the hospitality industry and job placement assistance.

State of Connecticut Program for Apprenticeships in the Trades

Careers in the trades can offer a rewarding job with good pay and opportunities for growth. A number of industries are growing rapidly and looking for more people with the right training to begin careers in fields such as electrical, elevators and conveyors, plumbing and lawn irrigation, heating, cooling and sheet metal, and glazier automotive and flat glass.

Demographics 2024



GREATER NEW HAVEN

| | |
|--|-----------|
| Population..... | 570,453 |
| Households..... | 226,154 |
| Per Capita Income..... | \$46,781 |
| Median Household Income..... | \$83,617 |
| Median Sales Price of Homes - New Haven County..... | \$360,000 |
| Median Age..... | 40.4 |
| Percent of the Population 25+ Years with a Bachelor's Degree or Higher..... | 40.4 |

BETHANY

| | |
|----------------------------------|-----------|
| Population..... | 5,277 |
| Households..... | 1,742 |
| Per Capita Income..... | \$70,042 |
| Median Household Income..... | \$141,000 |
| Median Sales Price of Homes..... | \$423,000 |
| Median Age..... | 43 |

BRANFORD

| | |
|----------------------------------|-----------|
| Population..... | 28,148 |
| Households..... | 13,087 |
| Per Capita Income..... | \$63,476 |
| Median Household Income..... | \$94,750 |
| Median Sales Price of Homes..... | \$375,000 |
| Median Age..... | 51 |

EAST HAVEN

| | |
|----------------------------------|-----------|
| Population..... | 27,682 |
| Households..... | 11,028 |
| Per Capita Income..... | \$41,397 |
| Median Household Income..... | \$83,489 |
| Median Sales Price of Homes..... | \$330,000 |
| Median Age..... | 43 |

GUILFORD

| | |
|----------------------------------|-----------|
| Population..... | 22,019 |
| Households..... | 8,786 |
| Per Capita Income..... | \$70,609 |
| Median Household Income..... | \$124,793 |
| Median Sales Price of Homes..... | \$571,000 |
| Median Age..... | 49 |

HAMDEN

| | |
|----------------------------------|-----------|
| Population..... | 60,809 |
| Households..... | 22,891 |
| Per Capita Income..... | \$43,753 |
| Median Household Income..... | \$90,484 |
| Median Sales Price of Homes..... | \$293,000 |
| Median Age..... | 37 |

MADISON

| | |
|----------------------------------|-----------|
| Population..... | 17,565 |
| Households..... | 6,825 |
| Per Capita Income..... | \$81,103 |
| Median Household Income..... | \$156,171 |
| Median Sales Price of Homes..... | \$785,000 |
| Median Age..... | 51 |

MERIDEN

| | |
|----------------------------------|-----------|
| Population..... | 60,242 |
| Households..... | 25,018 |
| Per Capita Income..... | \$35,389 |
| Median Household Income..... | \$63,671 |
| Median Sales Price of Homes..... | \$275,000 |
| Median Age..... | 40 |

MILFORD

| | |
|----------------------------------|-----------|
| Population..... | 52,679 |
| Households..... | 21,951 |
| Per Capita Income..... | \$60,178 |
| Median Household Income..... | \$104,441 |
| Median Sales Price of Homes..... | \$418,000 |
| Median Age..... | 46 |

NEW HAVEN

| | |
|----------------------------------|-----------|
| Population..... | 138,915 |
| Households..... | 52,977 |
| Per Capita Income..... | \$33,449 |
| Median Household Income..... | \$54,305 |
| Median Sales Price of Homes..... | \$270,000 |
| Median Age..... | 31 |

NORTH BRANFORD

| | |
|----------------------------------|-----------|
| Population..... | 13,464 |
| Households..... | 5,082 |
| Per Capita Income..... | \$57,093 |
| Median Household Income..... | \$114,167 |
| Median Sales Price of Homes..... | \$415,000 |
| Median Age..... | 48 |

NORTH HAVEN

| | |
|----------------------------------|-----------|
| Population..... | 24,261 |
| Households..... | 9,559 |
| Per Capita Income..... | \$58,801 |
| Median Household Income..... | \$121,250 |
| Median Sales Price of Homes..... | \$430,000 |
| Median Age..... | 46 |

ORANGE

| | |
|----------------------------------|-----------|
| Population..... | 14,258 |
| Households..... | 5,192 |
| Per Capita Income..... | \$61,656 |
| Median Household Income..... | \$138,514 |
| Median Sales Price of Homes..... | \$534,000 |
| Median Age..... | 45 |

WALLINGFORD

| | |
|----------------------------------|-----------|
| Population..... | 44,017 |
| Households..... | 18,431 |
| Per Capita Income..... | \$49,077 |
| Median Household Income..... | \$98,465 |
| Median Sales Price of Homes..... | \$335,000 |
| Median Age..... | 44 |

WEST HAVEN

| | |
|----------------------------------|-----------|
| Population..... | 55,004 |
| Households..... | 20,405 |
| Per Capita Income..... | \$34,470 |
| Median Household Income..... | \$72,827 |
| Median Sales Price of Homes..... | \$332,000 |
| Median Age..... | 36 |

WOODBRIIDGE

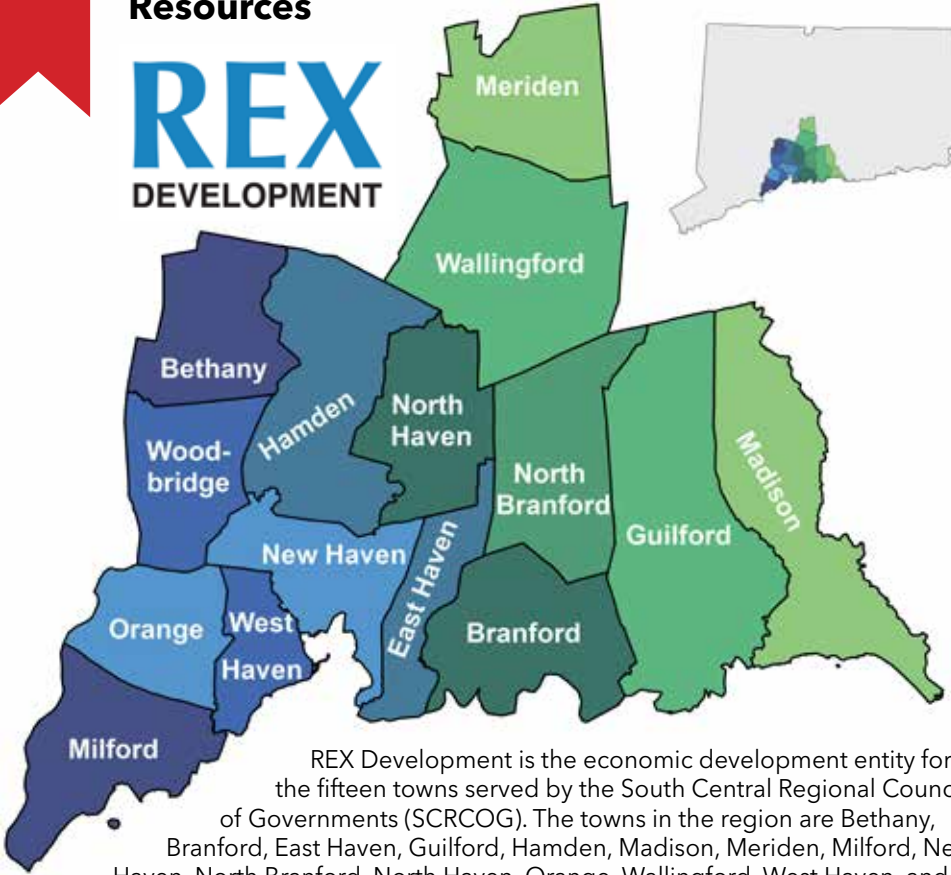
| | |
|----------------------------------|-----------|
| Population..... | 9,093 |
| Households..... | 3,180 |
| Per Capita Income..... | \$83,902 |
| Median Household Income..... | \$190,536 |
| Median Sales Price of Homes..... | \$630,000 |
| Median Age..... | 46 |

Sources: 2023 Census Quick Facts, Berkshire Hathaway Quarterly Market Report, Q4 2023



Resources

REX DEVELOPMENT



REX Development is the economic development entity for the fifteen towns served by the South Central Regional Council of Governments (SCRCOG). The towns in the region are Bethany, Branford, East Haven, Guilford, Hamden, Madison, Meriden, Milford, New Haven, North Branford, North Haven, Orange, Wallingford, West Haven, and Woodbridge. Working with other economic development organizations, we can help you start, expand, or relocate your business within Greater New Haven. We aim to connect you with supportive professionals and beneficial programs to meet your goals.

For assistance, don't hesitate to get in touch with us at 203-821-3682 or email moreinfo@rexdevelopment.org.

ECONOMIC DEVELOPMENT RESOURCES BY TOWN

| TOWN | NAME | EMAIL | PHONE |
|----------------|--------------------|--|--------------|
| Bethany | Paula Cofrancesco | pcofrancesco@bethany-ct.com | 203-393-2100 |
| Branford | Perry Maresca | pmaresca@branford-ct.gov | 475-837-3622 |
| East Haven | Michelle Benivegna | M.Benivegna@townofeasthavenct.org | 203-468-3371 |
| Guilford | Info Coming Soon | | 203-453-8071 |
| Hamden | Erik Johnson | EJohnson@hamden.com | 203-287-7033 |
| Madison | Info Coming Soon | | 203-245-5633 |
| Meriden | Joseph Feest | jfeest@meridenct.gov | 203-630-4152 |
| Milford | Julie Nash | jnash@ci.milford.ct.us | 203-783-3230 |
| New Haven | Kathleen Krolak | kkrolak@newhavenct.gov | 203-946-6982 |
| North Branford | Rory Burke | rburke@northbranfordct.gov | 203-484-6010 |
| North Haven | Michael Freda | Freda.Michael@town.north-haven.ct.us | 203-239-5321 |
| Orange | Annemarie Sliby | Asliby@orangeedc.com | 203-891-1045 |
| Wallingford | Don Crouch | don.crouch@wallingfordct.gov | 203-294-2062 |
| West Haven | Info Coming Soon | | 203-937-3640 |
| Woodbridge | Info Coming Soon | | 203-389-3401 |

Resources



STATE OF CONNECTICUT RESOURCES

AdvanceCT, advancect.org

BioCT, bioct.org

Connecticut Department of Economic and Community Development, portal.ct.gov/DECD

Connecticut Data Collaborative, ctdata.org

Connecticut Department of Labor, portal.ct.gov/dol/

Connecticut Department of Revenue Services, portal.ct.gov/drs

Connecticut Center for Advanced Technology, Inc., ccat.us

Connecticut Innovations, ctinnovations.com

CT SiteFinder, advancect.org/site-selection/ct-sitefinder

Small Business Administration Connecticut Division, sba.gov/district/connecticut

Small Business Development Center, ctsbdc.uconn.edu

CHAMBERS OF COMMERCE

East Haven Chamber of Commerce, P.O. Box 120055, East Haven. 203-467-4305, easthavenchamber.com

Greater New Haven Chamber of Commerce, 900 Chapel St., 10th Fl., New Haven. 203-787-6735, gnhcc.com

Hamden Regional Chamber of Commerce, 3074 Whitney Ave., Hamden. 203-288-6431, hamdenregionalchamber.com

Madison Chamber of Commerce, 12 School Street, P.O. Box 706, Madison. 203-245-7394, madisonct.com

Middlesex Chamber of Commerce, 393 Main St., Middletown. 860-347-6924, middlesexchamber.com

Midstate Chamber of Commerce, 546 South Broad St. #2C, Meriden. 203-235-7901, midstatechamber.com

Milford Regional Chamber of Commerce, 1201 Boston Post Rd., Unit 1100, Milford. 203-878-0681, milfordct.com

Orange Chamber of Commerce, 605A Orange Center Rd., Orange. 203-795-3328, orangectchamber.com

Quinnipiac Chamber of Commerce, 50 North Main St. 2nd Fl., Wallingford. 203-269-9891, quinncham.com

Shoreline Chamber of Commerce, 2614 Boston Post Rd., Guilford. 203-488-5500, shorelinechamberct.com

COWORKING SPACES

DistriCT New Haven, 470 James St., New Haven. 203-285-8341, districtnhv.com

Greater New Haven Chamber of Commerce, 900 Chapel St. 10th Fl., New Haven. 203-787-6735, gnhcc.com

HUBCAP Wallingford, 128 Center St., Wallingford. 203-626-9351, hubcapwallingford.org

KNOWN Coworking, 139 Orange St. 4th Floor, New Haven. nhvknown.com

Marlin Works, 85 Willow St., New Haven. 203-387-9700, marlinworksnewhaven.com

New Haven Free Public Library, 133 Elm St., New Haven. 203-946-8130, nhfpl.org

Regus, 157 Church St. 19th Fl., New Haven. 475-655-3000, regus.com

S*Park Innovation, 5 Science Park, New Haven. 203-497-3953, scienceparknewhaven.org

Urban Collective, 85 Willow St., New Haven. theurbancollectivect.com

The Work Station, 150 Boston Post Rd., Madison. 203-494-4738, attheworkstation.com

EDUCATION

Chapel Haven Schleifer Center Inc., 1040 Whalley Ave., New Haven. Chapel Haven, an award-winning postsecondary and transition program, empowers adults with social and developmental disabilities to live independent and self-determined lives. Our new campus includes outstanding modern residences, classrooms, common spaces, and the new Schleifer Adult Independent Living (SAIL) facility for lifelong support. Daily, 24 hours. Tuition varies. 203-397-1714 ext. 148, chapelhaven.org



The New HVN is growing to deliver new opportunities and convenience for passengers.

Our expansion will create jobs, invest in the community, and provide for more sustainability.



flytweed.com

List Of Advertisers

| | |
|--|-------------------|
| AFC Urgent Care | 53 |
| Amistad Committee Inc | 14 |
| Beinecke Rare Book & Manuscript Library | 39 |
| Bishop's Orchards and Winery | 27 |
| Brownstone Adventure Sports Park/ Powder Ridge Mountain Park & Resort | 67 |
| Chapel Haven Schleifer Center | 49 |
| City of New Haven | 6 |
| Courtyard by Marriott Orange/Milford | 48 |
| Courtyard by Marriott at Yale | 25 |
| Connecticut Science Center | 8 |
| CT rail | 42 |
| Devon Motel | 31 |
| Greater New Haven Chamber Of Commerce | 52 |
| Guilford Art Center..... | 11 |
| Homewood Suites by Hilton Orange/New Haven | 48 |
| JCC of Greater New Haven | 10 |
| L'ORCIO | 20 |
| Long Wharf Theater | 8 |
| Market New Haven | 2 |
| New Haven Museum | 13 |
| New Haven Village Suites | 20 |
| Omni New Haven Hotel | 4 |
| Park New Haven | 41 |
| Seaside Home and Gifts | 41 |
| Shops at Yale | 3 |
| Shoreline Chamber of Commerce | 4 |
| Town Green Special Service District | 54 |
| Tweed-New Haven Regional Airport ... | 66 |
| Southern Connecticut State University | 53 |
| The Wadsworth Mansion | 16 |
| Walnut Beach Creamery | 18 |
| Yale University Art Gallery | Back Cover |
| Yale Center for British Art | Back Cover |



BROWNSTONE ADVENTURE SPORTS PARK



**Are you ready for the best day ever?
Brownstone offers adventures for the whole family**

**14 Ziplines - Cliff Jumping - Water Obstacles
Rock Climbing Wakeboarding - Kayaking**

Portland, CT. 866-860-0208 BrownstonePark.com



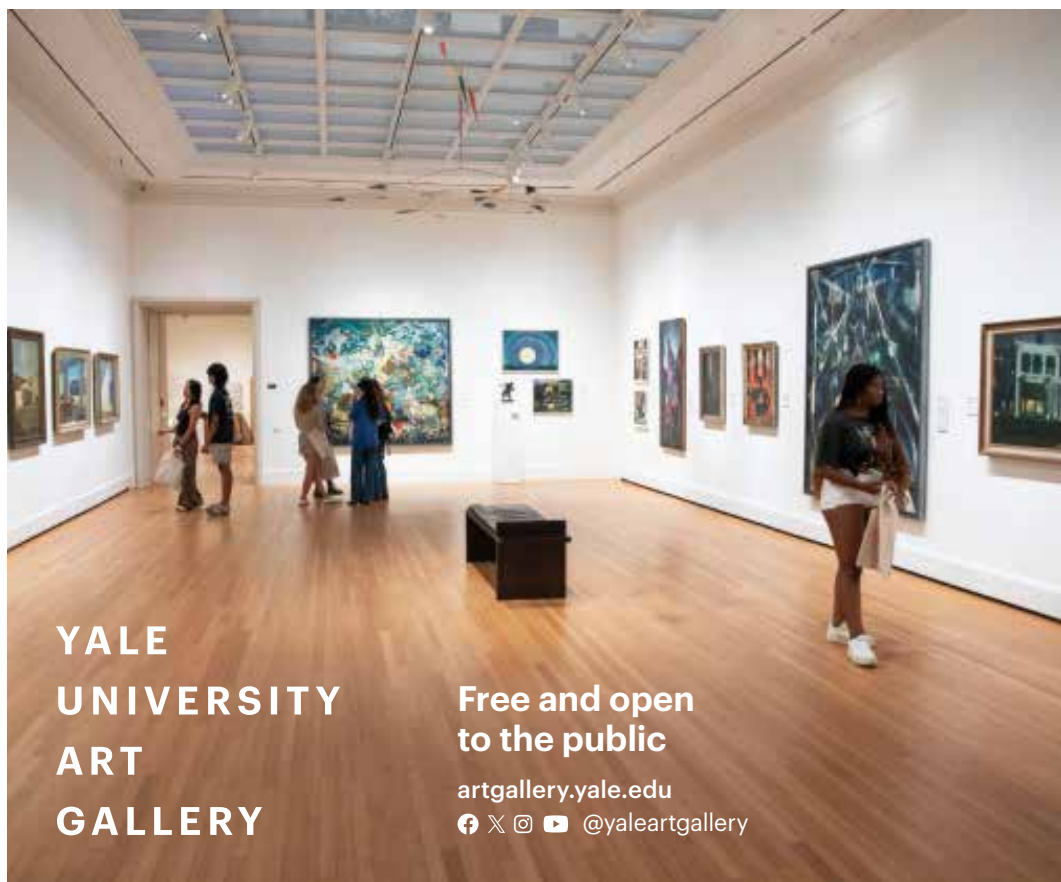
POWDER RIDGE MOUNTAIN PARK & RESORT



**Year-round adventure
Downhill Mt. Biking - Paintball
Slide the Slopes - Water Slides
Zip Lines - Disc Golf - Sling Shot**

**Brownstone and Powder Ridge are located 20 minutes from each other,
making the perfect staycation weekend!**

Middlefield, CT. 866-860-0208 PowderRidgePark.com



YALE
UNIVERSITY
ART
GALLERY

Free and open
to the public

artgallery.yale.edu

[f](#) [X](#) [@](#) [v](#) [@yaleartgallery](#)

**The Yale Center for British Art
will reopen in Spring 2025!**

**Visit us online for programs,
updates, and collections access.**

YALE
CENTER
FOR
BRITISH
ART

Highlights from the YCBA collection are currently
on view at the Yale University Art Gallery.

britishart.yale.edu [@yalebritishart](#) [f](#) [@](#) [in](#) [X](#) [▶](#)

Aerial view of the Yale Center for British Art, photo by Trident Aerial Imagery