

2025 WINTER/SPRING VISITOR GUIDE

WHERE CITIES MEET... **WAUKESHA PEWAUKEE** AND PEOPLE DO, TOO. WISCONSIN



**EXPLORE
TOGETHER.**



WELCOME!

Thanks for checking out Waukesha Pewaukee – an incredible place where cities meet and people do, too!

Our communities are conveniently located in beautiful Waukesha County, off I-94 in Southeastern Wisconsin. We have accommodating hotels, loads of fun water activities, an impressive variety of entertaining things to do and see, and delightful dining options for just about every taste. As you flip through this guide, you'll learn fun facts about Waukesha Pewaukee, find inspiration for ideas when you visit, and discover area maps and helpful info.

Need help planning your trip or with any questions?

Call us at (262) 542-0330 or online at the links below. We are happy to help!

email: info@visitwaukesha.org

social: [@visitwaukesha](#)   



CONTENTS

3-13

FACTS & MAPS

Get to know the Waukesha and Pewaukee area, learn interesting fun facts and see maps of the area to plan your outings.

14-25

THINGS TO DO + EVENTS

Learn about area events and all there is to see and do! Plus, get ideas for day and weekend trips.

26-29

WHERE TO STAY

Rest and recharge at one of our area hotels.

30-35

FOOD & DRINK

Find out where to eat, drink and be merry.

36-39

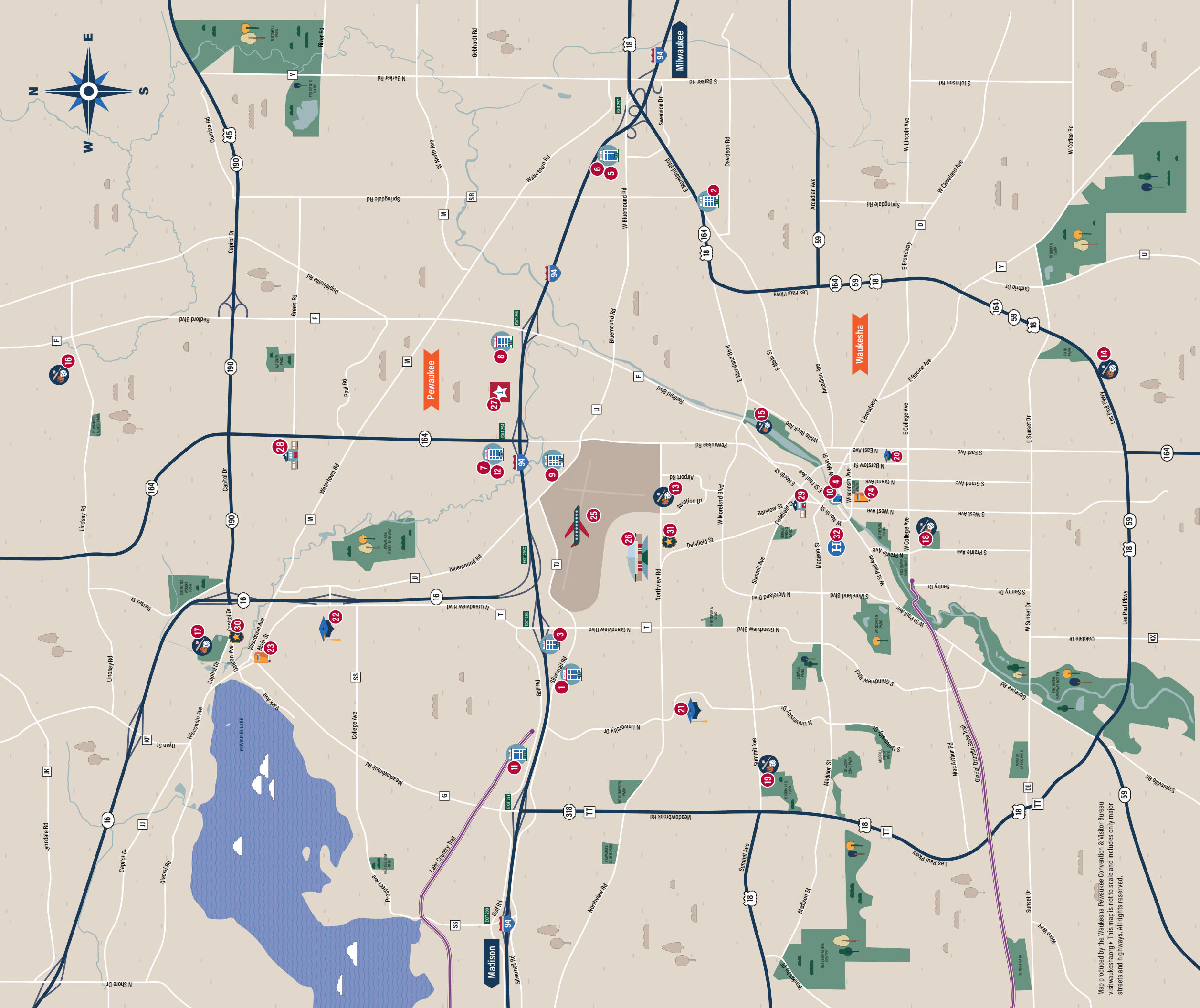
SHOPPING

Discover our quaint boutiques and shops.

While every effort is made to ensure the accuracy of information in this guide at the date of publication, errors, changes and omissions can occur. For your convenience, please call ahead to confirm dates, times and other information.

Waukesha Pewaukee Convention and Visitor Bureau is committed to environmental, social and economic sustainability in our business.

©December 2024 All rights reserved



Map produced by the Waukesha/Pewaukee Convention & Visitor Bureau visitwaukesha.org - This map is not to scale and includes only major streets and highways. All rights reserved.

Waukesha & Pewaukee

ACCOMMODATIONS

- 1 avid Hotel Milwaukee West - Waukesha
- 2 Baymont Inn & Suites
- 3 Best Western Waukesha Grand
- 4 Cobblestone Hotel (opening 2026)
- 5 Comfort Inn
- 6 Extended Stay America Milwaukee - Waukesha
- 7 Holiday Inn Pewaukee-Milwaukee West
- 8 Milwaukee Marriott West
- 9 Price Pointe Inn
- 10 The Clarke Hotel
- 11 The Ingleside Hotel
- 12 Wildwood Lodge Pewaukee



SPORTS COMPLEXES

- 13 Center Court Sports Complex
- 14 CMH Sullivan Campus
- 15 Frame Ballpark
- 16 Pewaukee Sports Complex
- 17 Pewaukee Village Park
- 18 Saratoga Sports Complex
- 19 William R. Oliver Youth Sports Complex



LIBRARIES

- 23 Pewaukee Public Library
- 24 Waukesha Public Library



AIRPORT

- 25 Waukesha County Airport
- 26 Waukesha County Expo Center



CITY HALLS

- 28 Pewaukee City Hall
- 29 Waukesha City Hall



POLICE STATIONS

- 30 Pewaukee Village
- 31 Waukesha



COLLEGES & UNIVERSITIES

- 20 Carroll University
- 21 UWM at Waukesha
- 22 Waukesha County Technical College



Waukesha Memorial Hospital

- 27 Waukesha Pewaukee Convention & Visitor Bureau

Pewaukee

FAST FACTS

POPULATION: 16,169 (2023)

The **Clark House Museum** was originally a stagecoach inn on the railroad line running from Milwaukee to Watertown.

Since 1984, the **Pewaukee Lake Water Ski Club** has entertained the local community and visitors, performing about 20 shows every summer.

Pewaukee Beach is well-known for its public beach, water rentals, and unbelievable lake views.

Pewaukee is the world headquarters of **Harken**, an international manufacturer of sailboats and yacht gear.

A charming community known for its close-knit feel, Pewaukee offers you its celebrated past, a vibrant culture, year-round outdoor activities, and the stunning beauty of Lake Country.

KNOWN FOR...
Beautiful **Pewaukee Lake**, a 2,437-acre freshwater lake.
The best **Musky fishing** in southeast Wisconsin, drawing avid anglers from near and far.
It is the childhood home of the **Watt brothers**, JJ, Derek, and TJ, who played (or are still playing) for the NFL.

Founded in 1949, the **Pewaukee Yacht Club** is one of the most prestigious yacht clubs in the Midwest.

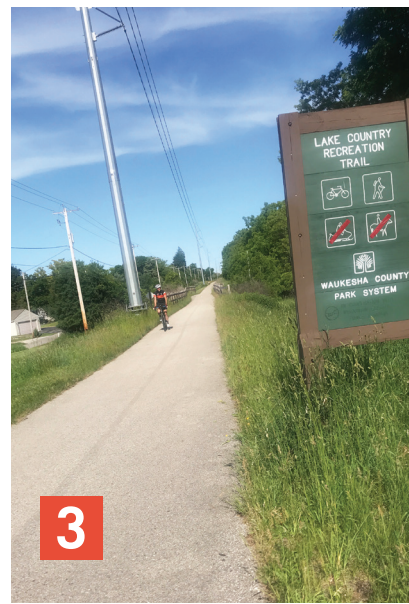
There are **15 community parks** and the Lake Country Trail in Pewaukee



1



2



3



4



5

PHOTO OPS:

- 1 **PEWAUKEE LAKE** lakefront, Lakefront Park, shops & dining
- 2 **SIMMONS WOODS** hiking and nature viewing
- 3 **LAKE COUNTRY TRAIL** biking/hiking
- 4 **PEWAUKEE PENNY'S BRIDGE** and Pewaukee River
- 5 **LYNNDALE FARM SHOPS** a quaint converted farm and barn with five shops

Pewaukee



ACCOMMODATIONS

- 1 Holiday Inn Pewaukee-Milwaukee West
- 2 Milwaukee Marriott West
- 3 Wildwood Lodge Pewaukee



ATTRACTIONS

- 4 Adventure Rock
- 5 Battle House Laser Tag
- 6 Beachside Boat & Bait
- 7 Clark House Museum
- 8 K1 Indoor Speedway
- 9 Paddle Pewaukee
- 10 Pewaukee Lakefront Park/Beach
- 11 Pewaukee Village Park
- 12 SkyZone Indoor Trampoline Park
- 13 Smokey's Musky Shop
- 14 Urban Slopes



BOAT LAUNCHES

- 15 Maple Avenue
- 16 Woodland Drive
- 17 Lake Street



- 18 Shopping & Dining District



GOLF COURSES

- 19 Pewaukee Golf Club
- 20 Western Lakes



- 21 Pewaukee Sports Complex



- 22 Lake Country Trail



- 23 Waukesha County Technical College



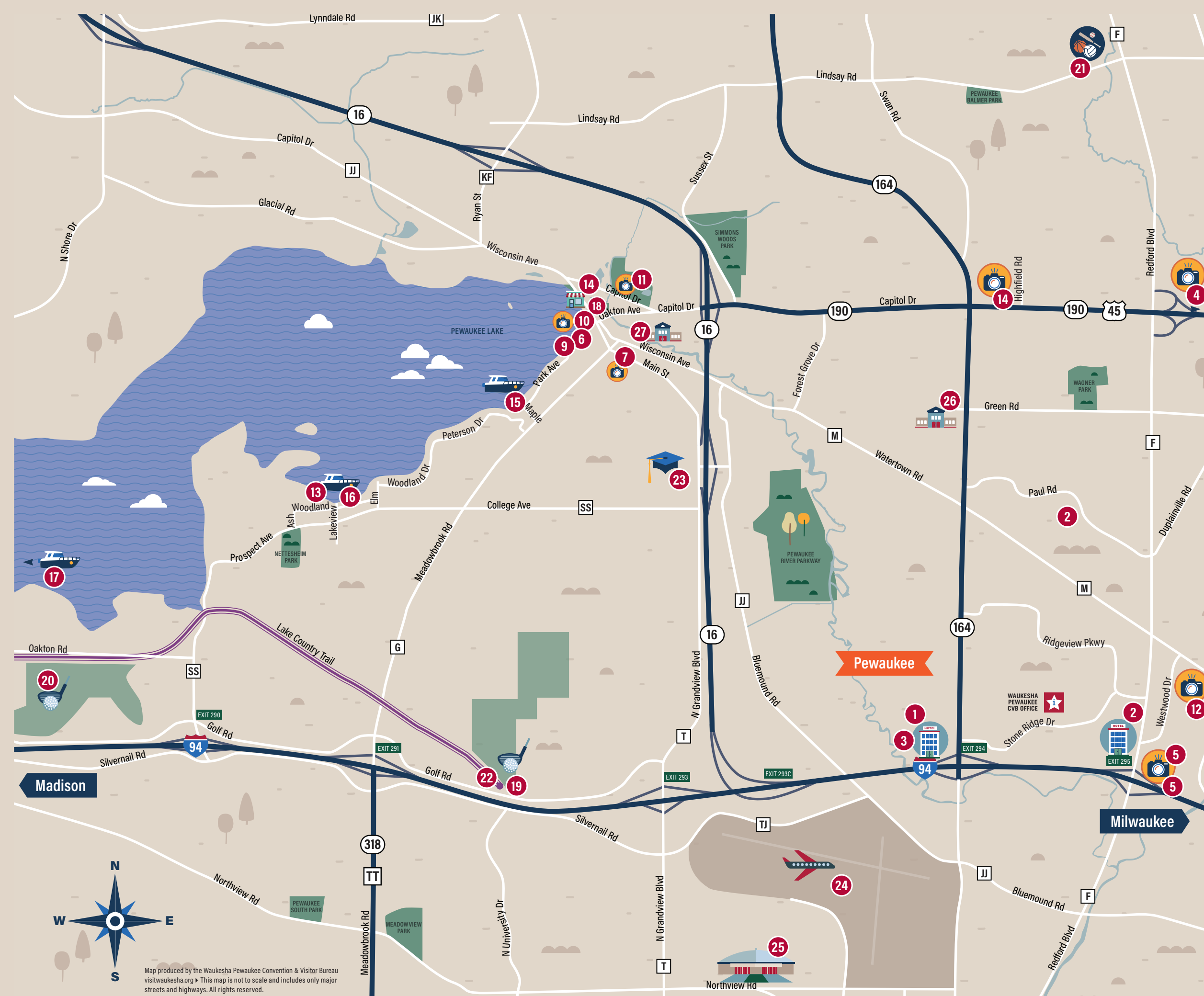
- 24 Waukesha County Airport



- 25 Waukesha County Expo Center



- 26 Pewaukee City Hall
- 27 Pewaukee Village Hall



Map produced by the Waukesha Pewaukee Convention & Visitor Bureau visitwaukesha.org This map is not to scale and includes only major streets and highways. All rights reserved.

Waukesha

FAST FACTS

POPULATION: 71,307 (2023)

The **Waukesha County Museum** showcases the area's history and culture, plus offers a permanent Les Paul experience exhibit.

The **Fox River** runs through the city, offering scenic views, outdoor fun, and a beautiful riverwalk.

Waukesha's **walkable and charming downtown** offers eclectic shopping and delightful dining experiences.



Carroll University, founded in 1846, is Wisconsin's oldest four-year institution of higher education.



When you visit Waukesha, you will experience the city's rich history and welcoming spirit. Many attractions combine our area's natural beauty with our thriving community, making it a remarkable place to live and visit.

KNOWN FOR...

Waukesha is the **seventh-largest city** in Wisconsin.

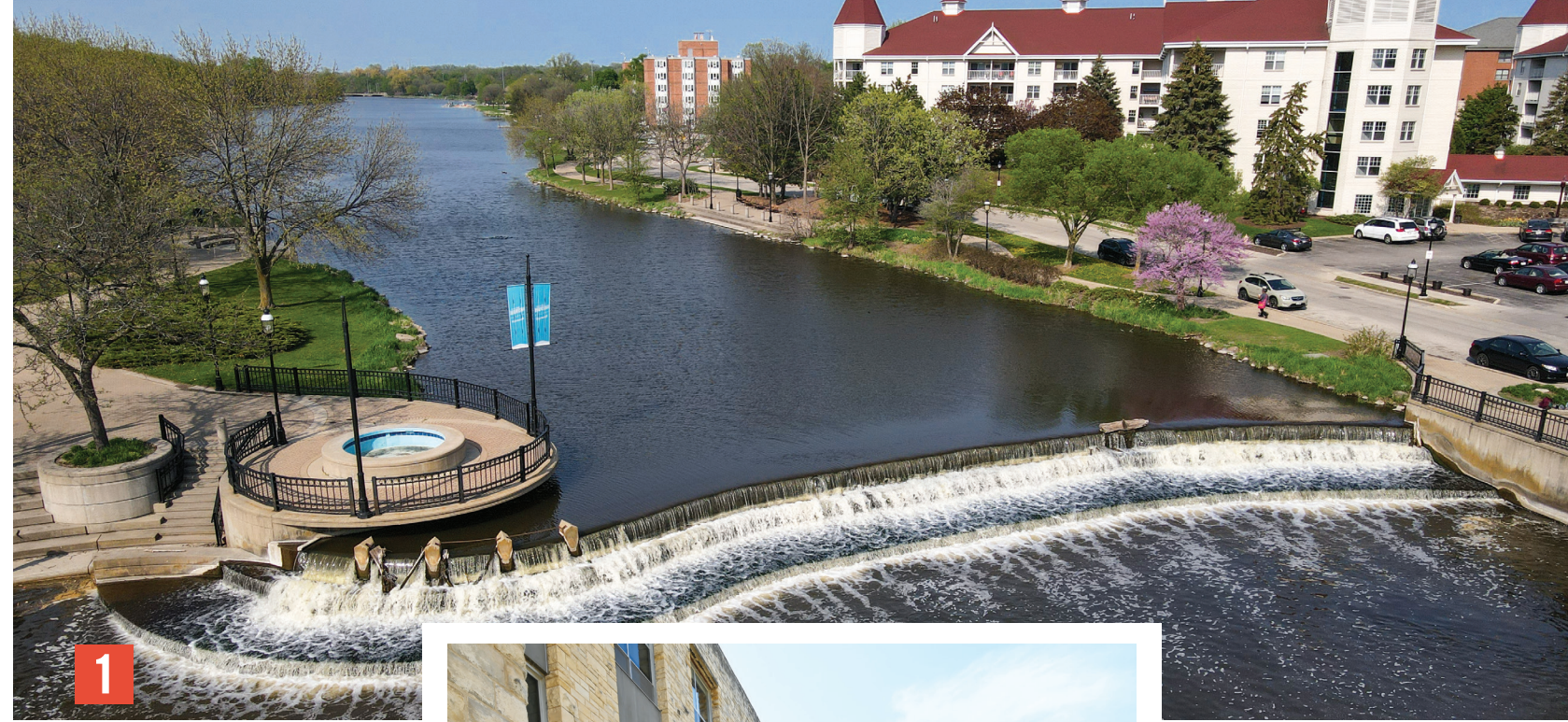
Birth and resting place of legendary inventor, musician and guitarist **Les Paul**.

In the past known as "Spring City" for natural artesian springs.

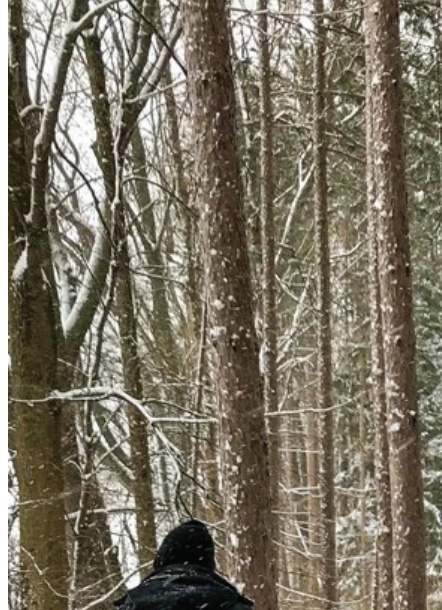
The city hosts a **vibrant arts scene**, with many art galleries and cultural events, 10 foot tall guitars and murals throughout the city.



Waukesha has over **1,100 acres** of parkland and **50 parks**



1



4



2



3



5

PHOTO OPS:

- 1** Downtown Waukesha **Fox Riverwalk**
- 2** **Guitar Town** Guitars, Murals & Waukesha County Museum
- 3** **Frame Park** gardens + bike/boat rentals
- 4** **Retzer Nature Center**
- 5** **Downtown Waukesha** dining, shopping & more

Waukesha



ACCOMMODATIONS

- 1 avid Hotel Milwaukee West - Waukesha
- 2 Baymont Inn & Suites
- 3 Best Western Waukesha Grand
- 4 Cobblestone Inn (opening 2026)
- 5 Comfort Inn
- 6 Extended Stay America Milwaukee - Waukesha
- 7 Milwaukee Marriott West
- 8 Price Pointe Inn
- 9 The Clarke Hotel
- 10 The Ingleside Hotel



ATTRACTIONS

- 11 Escape Waukesha
- 12 Foxx View Lanes Entertainment Center
- 13 High Roller Fun Rentals
- 14 iCOMBAT Waukesha
- 15 North Pillar Brewing
- 16 Prairie Home Cemetery
- 17 Praireville Park
- 18 Raised Grain Brewing Company
- 19 Sky Zone Trampoline Park
- 20 Springs Water Park
- 21 Sunset Bowl Entertainment Center
- 22 Swing Time Golf & Baseball
- 23 Urban Air Trampoline and Adventure Park
- 24 Waukesha Civic Theatre
- 25 Waukesha County Historical Society & Museum
- 26 Waukesha Farmers' Market
- 27 Waukesha Skateland



SHOPPING & DINING DISTRICT



GOLF COURSES

- 29 Legend at Merrill Hills
- 30 Moor Downs
- 31 Morningstar Golfers Club



SPORTS COMPLEXES

- 32 CMH Sullivan Campus
- 33 Center Court Sports Complex
- 34 Saratoga Sports Complex
- 35 William R. Oliver Youth Sports Complex



COLLEGES/UNIVERSITIES

- 36 Carroll University
- 37 UWM at Waukesha



Waukesha County Airport



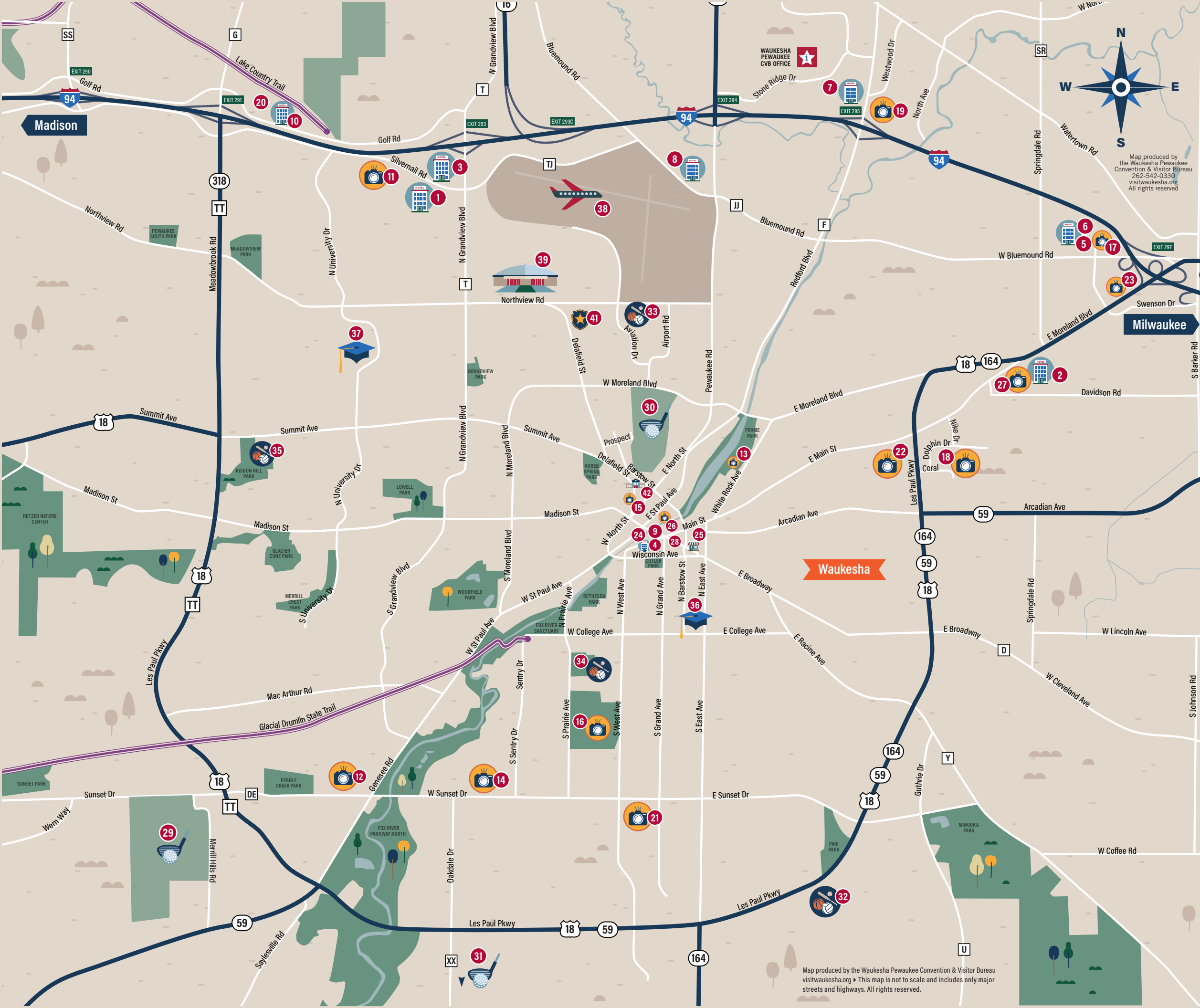
Waukesha County Expo Center



Waukesha City Hall



Waukesha Police Station



Map produced by the Waukesha Pewaukee Convention & Visitor Bureau
262-542-0330
visitwaukesha.org
All rights reserved.

Map produced by the Waukesha Pewaukee Convention & Visitor Bureau
visitwaukesha.org This map is not to scale and includes only major streets and highways. All rights reserved.

Things to do

There's so much fun to be had in Waukesha Pewaukee! Where to begin?

No matter the season, we have you covered for an unforgettable time in our remarkable communities. Whether you want to sit back and relax or enjoy a night on the town, our extraordinary variety of activities will surely fit the bill.



ARTS & CULTURE

A STROKE OF GENIUS PAINT WINE STUDIO
250 W. Broadway Street, Waukesha
paintwinestudio.com

CHEF PAM'S KITCHEN
280 W. Main Street, Waukesha
chefpamskitchen.com

EAST TROY ELECTRIC RAILROAD
2002 Church Street, East Troy
easttroyr.org

FISK AVENUE
840 N Grand Avenue, Waukesha
fiskavenue.com

HOLY HILL
1525 Carmel Road, Hubertus
holyhill.com

OLD WORLD WISCONSIN
W372 S9727 Wisconsin 67, Eagle
oldworldwisconsin.wisconsinhistory.org

SUMMERSTAGE OF DELAFIELD
West 329 North 846 County Highway C, Delafield
summerstageofdelafield.org

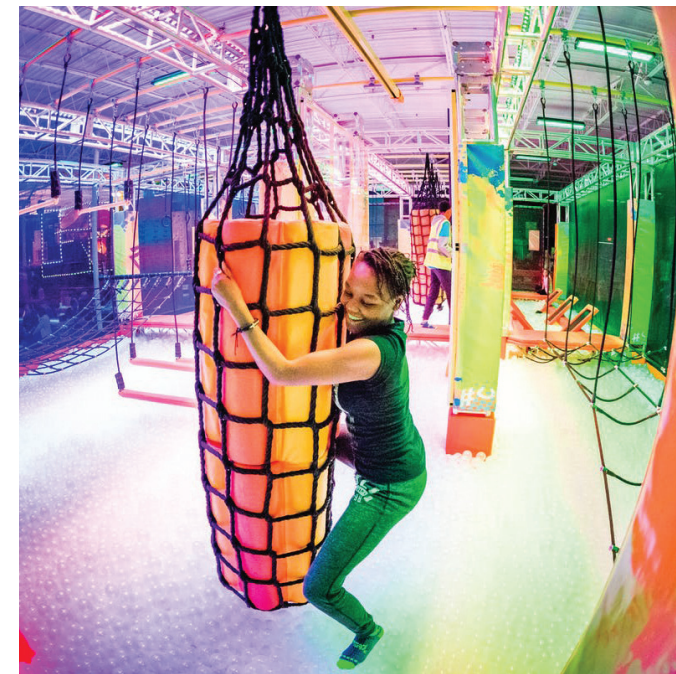
TEN CHIMNEYS
S43 W31575 Depot Road, Genesee
tenchimneys.org

THE POTTER'S SHOP
1314 South West Avenue, Waukesha
pottersshop.com

WAUKESHA CIVIC THEATRE
264 West Main Street, Waukesha
waukeshacivictheatre.org

WAUKESHA COUNTY MUSEUM & HISTORICAL SOCIETY
101 West Main Street, Waukesha
waukeshacountymuseum.org

WAUKESHA GUITARTOWN MURALS & GUITARS
Throughout downtown Waukesha
(see pages 18-19 for map of locations)



▶ BOWLING

FOXX VIEW LANES
2440 West Sunset Drive, Waukesha
foxxviewlanes.com

SUNSET BOWL ENTERTAINMENT CENTER
333 West Sunset Drive, Waukesha
sunset-bowl.com

▶ ESCAPE ROOMS

ESCAPE WAUKESHA
2335 Silvernail Road, Waukesha
waukeshaescaperooms.com

SOLVE ESCAPE ROOMS
1720 Dolphin Drive, Waukesha
solveescaperooms.com

▶ FUN & GAMES

ADVENTURE ROCK INDOOR CLIMBING GYM
21250 West Capitol Drive, Pewaukee
adventurerock.com

BUCK RUB OUTFITTERS
N13 W28400 Silvernail Road, Pewaukee
buckrubarchery.com



▶ FUN & GAMES

GAME ROOM AT POINT BURGER BAR
W229N1400 Westwood Drive, Waukesha
pointburgerbarpewaukee.com

HORWITZ-DEREMER PLANETARIUM
S14 W28167 Madison Street, Waukesha
linkvisitwaukesha.com/hdplanetarium

K1 INDOOR SPEEDWAY
W229N1400 Westwood Drive, Pewaukee
k1speed.com/milwaukee-location.html

KRAZY GOLF
257 West Broadway Street, Waukesha
krazygolf.com

LUMBER AXE
831 North Grand Avenue, Waukesha
lumberaxewaukesha.com

SKY ZONE INDOOR TRAMPOLINE PARK
W229 N1420 Westwood Drive, Pewaukee
skyzone.com/milwaukee

SPRINGS WATER PARK
2810 Golf Road, Pewaukee
theinglesidehotel.com/waterpark

URBAN AIR ADVENTURE PARK MILWAUKEE WEST
2440 East Moreland Boulevard, Waukesha
urbanair.com/wisconsin-milwaukee-west

URBAN SLOPES PEWAUKEE
N35W23770 Capitol Drive, Pewaukee
urban-slopes.com

WE ROCK THE SPECTRUM
690 Westfield Way Suite 2A, Pewaukee
werockthespectrumpewaukee.com

▶ LASER TAG

BATTLE HOUSE LASER COMBAT
W229 N1420 Westwood Drive, Pewaukee
battlehouselasercombat.com/waukesha

ICOMBAT TACTICAL LASER TAG
1023 Spring City Drive, Waukesha
icombatwaukesha.com

▶ SKATING

EBLE PARK ICE ARENA
19400 West Bluemound Road, Waukesha
waukeshacounty.gov/parksystem

NAGA-WAUKEE PARK ICE ARENA
2699 Golf Road, Delafield
waukeshacounty.gov/parksystem

WAUKESHA SKATELAND
1931 East Main Street, Waukesha
waukesha.skate-land.com

Things to do

GOLF

BROADLANDS GOLF CLUB

18 Augusta Way, North Prairie
broadlandsgolfclub.com

ERIN HILLS

7169 County Road O, Erin
erinhills.com

INDOOR GOLF CENTERS

Find information about three indoor golf centers in our area - Birdie Boyz, Tap In Golf and Wisconsin Indoor Golf Center at visitwaukesha.org/category/golf

MOOR DOWNS GOLF COURSE

438 Prospect Avenue, Waukesha
waukeshacounty.gov/golf

MORNINGSTAR GOLFER'S CLUB

S77 W26285 Prairieside Drive, Waukesha
golfthestar.com

NAGA-WAUKEE WAR MEMORIAL GOLF COURSE

W307 N1897 Maple Avenue, Pewaukee
waukeshacounty.gov/golf

PEWAUKEE GOLF CLUB

N12W26506 Golf Road, Pewaukee
pewaukeegolf.com

PRAIRIEVILLE PARK (MINI GOLF)

2507 Plaza Court, Waukesha
prairievillepark.com

SONGBIRD HILLS GOLF CLUB

W259 N8700 WI-164, Hartland
golfsongbird.com

SWING TIME GOLF & BASEBALL (MINI GOLF)

1601 East Main Street, Waukesha
swingtimewaukesha.net

WESTERN LAKES GOLF CLUB

W287 N1963 Oakton Road, Pewaukee
westernlakes.com



▶ PARKS

FOX RIVER PARK

W264 S4500 River Road, Waukesha
waukeshacounty.gov/foxriver

FRAME PARK

701 West Moreland Boulevard, Waukesha
linkvisitwaukesha.com/frame-park

ICE AGE NATIONAL SCENIC TRAIL, KETTLE MORaine STATE FOREST SOUTHERN UNIT

W329 N846 County Road C, Delafield
dnr.wisconsin.gov/topic/parks/iceagetrail

LAKEFRONT PARK, PEWAUKEE LAKE

222 West Wisconsin Avenue, Pewaukee
linkvisitwaukesha.com/lakefrontpark

LAPHAM PEAK, KETTLE MORaine STATE FOREST SOUTHERN UNIT

W329 N846 Cty. Road C, Delafield
dnr.wisconsin.gov/topic/parks/laphampeak

MINOOKA PARK

1927 East Sunset Drive, Waukesha
waukeshacounty.gov/parksystem

RETZER NATURE CENTER

S14 W28167 Madison Street, Waukesha
waukeshacounty.gov/parksystem



NIGHTLIFE

30+ places for adult beverages and fun!

Including many bars, two breweries, three wine bars, places for games and more. Find them all in this QR code link!

SCAN

for more details on nightlife places!



▶ BIKING

FOX RIVER TRAIL

Watertown Road, Pewaukee
waukeshacounty.gov/parksystem

GLACIAL DRUMLIN TRAIL

810 West College Avenue, Waukesha
glacialdrumlintrail.com

LAKE COUNTRY TRAIL

203 W Wisconsin Avenue, Pewaukee
waukeshacounty.gov/parksystem

▶ FISHING GUIDES

BITTEN FOR REEL GUIDE SERVICE

facebook.com/BittenForReel

DANCING WITH WALLEYES

dancingwithwalleyes.com

▶ HORSEBACK RIDING

KETTLE MORaine RANCH

kettlemoraineranch.com

WILD 3L RANCH (GUIDED TRAIL RIDES)

wild3lranch.com

OUTDOOR RECREATION

SIMMONS WOOD PARK

889 Cecelia Drive, Pewaukee
linkvisitwaukesha.com/simmonswoods

Find more area parks and information at visitwaukesha.org/outdoor-recreation

▶ WATER FUN

BEACHSIDE BOAT & BAIT

beachsideboat.com

FOX RIVER

visitwaukesha.org/family-fun-on-the-fox-river

HIGH ROLLER FUN RENTALS

highrollerfunrentals.com

PADDLE PEWAUKEE

paddlepewaukee.com

PEWAUKEE LAKE

linkvisitwaukesha.com/pewaukeelake

SMOKEY'S ON PEWAUKEE LAKE

N27 W27250 Woodland Drive, Pewaukee
smokeysmusky.com

SURF LAKE COUNTRY

surflakecountry.com

THE PINTOON BOAT TOURS

thepinton.com

Find more water fun ideas at visitwaukesha.org/water-fun

▶ SHOOTING SPORTS

WAUKESHA GUN CLUB

23170 Watertown Road, Waukesha
waukeshagunclub.org

WERN VALLEY SPORTSMENS CLUB

S36W29657 Wern Way, Waukesha
wernvalley.com

▶ TREETOP EXPLORING

TREETOP EXPLORER

treetopexplorer.com

SCAN

for more information on things to do!





Murals

- 1 Gallery 1 Building**
507 East Broadway Street
- 2 Olsons Ace Hardware**
155 W. Main Street.
GuitarTown Murals: West side of building – Main & Barstow Street and West side of building – Main & Martin Street
- 3 Wallpups Mural**
135 Broadway – between Barstow Street and Wisconsin Avenue
- 4 Rhythm of the Road**
Corner of Broadway and Barstow St.
- 5 Discount Liquor**
North side of building
919 N. Barstow Street
- 6 Clock Tower Lot**
- 7 The Salty Toad**
Riverfront Plaza
921 Friedman Drive
- 8 Clinton Street Municipal Lot #4**
Clinton Street entrance between Wisconsin Ave. and South Street.
- 9 Clinton St. & W. Main St. Lot**
351 W. Main Street
GuitarTown Mural: East side of building
- 10 Waukesha State Bank**
151 E. St. Paul Avenue
GuitarTown Mural: St. Paul Avenue side of building
- 11 Waukesha Monument**
384 W. Main Street
GuitarTown Mural: West side of building – Maple & Main St.
- 12 Couri Insurance building**
379 W. Main Street GuitarTown Mural: Main St. and Maple Avenue
- 13 Mainstream Bar & Grill**
404 W. Main Street
GuitarTown Mural: Mural on side of building



Waukesha is honored to have been named a Gibson GuitarTown in large part to the life and legacy of Les Paul. We share this privilege with other distinguished cities including, Los Angeles, Cleveland, Miami, Orlando, Austin, Nashville, and London.

At different spots around downtown Waukesha, you can't miss a series of murals focused on Les Paul and the history of Waukesha. Most of the

GuitarTown murals were painted by the nationally acclaimed Walldogs. These artists are well known for their sign and mural creations around the United States. Some of the murals were painted by local artists.

There are also 10-foot-tall fiberglass Gibson Les Paul guitar sculptures painted by local artists throughout Waukesha. Both the murals and the 10-foot-tall guitars are great spots for fun photos. An added bonus: as you are exploring you will discover other smaller painted guitars, murals, art and all downtown Waukesha offers!

Guitars

-  **Shopping & Dining**
-  **Parking**
-  **Cobblestone Hotel (opening 2026)**
Wisconsin Ave.
-  **The Clarke Hotel**
314 W. Main St.

- 1 Ramona Audley**
Waukesha State Bank
100 Bank Street
- 2 Bridget Griffins Evans & Gene Evans**
Freeman Building
801 N. Barstow Street.
- 3 FTW Designs**
Commercial Building
101 W. Broadway Street
- 4 Central Middle School Students**
Main Street Plaza
234 W. Main Street
- 5 Jennifer Espenscheid**
Waukesha Tattoo@Galleria Edge
463 W. Main Street (inside)
- 6 Jeff Homar**
Waukesha County Museum
101 W. Main Street
- 7 Chuck Weber**
Martha Merrell's Books & Cafe
331 W. Main Street (inside)
- 8 Pat Mitchell**
Couri Insurance
379 W. Main Street. (inside)
- 9 Jeff Seymour**
Springs Building
521 Wisconsin Avenue
- 10 Ben Stark**
La Casa de Esperanza
134 Wisconsin Avenue
- 11 Team Guthrie**
Avalon
222 Park Place
Corner of Main & Gaspar Street
- 12 Neal Vogt**
Leather Restoration
401 Madison Street
- 13 Neal Vogt**
Fire Station #1
130 W. St. Paul Avenue

SCAN
for Google map of
GuitarTown guitar
& mural locations



Make a day of it

What to do if you're only in Waukesha Pewaukee for a day? You have lots of options! Here are some entertaining ideas for families, couples, and friends.



FAMILY-FRIENDLY OUTINGS

Try these activities to make the most of your day together in Waukesha Pewaukee.

► **INDOOR ADVENTURE:** Horwitz-DeRemer Planetarium, Marcus Majestic Cinema, Springs Waterpark, Sky Zone Trampoline Park, Urban Air Adventure Park

► **MUSEUMS:** Clark House Museum, Old World Wisconsin, Waukesha County Museum

► **PARKS:** Get out and explore 50+ area parks and hike, bike and more. Find info. at visitwaukesha.org/outdoor-recreation

► **FAMILY-FRIENDLY FOOD SPOTS:** Bubba's Frozen Custard, John's Drive-In, La Estacion, Point Burger Bar, Sweet Dreams, The Chocolate Factory. Plus, find 20+ here: visitwaukesha.org/kid-friendly

► **TAKE A WALKING TOUR** to find guitars and more in our area visitwaukesha.org/maps

FUN WITH FRIENDS

There's nothing better than when the crew is all together. Take advantage of your friend time, and plan experiences no one will soon forget.

► **DIY OPPORTUNITIES:** A Stroke of Genius, Chef Pam's Kitchen, Fisk Avenue, The Potter's Shop

► **WINE BARS:** Crush Wine Bar, Spring City Wine House, Twisted Vine Wine Shop

► **SHOPPING:** Antiques & Uniques, Burlap & Lace Marketplace, Harvest Home, Plowshare Fairtrade Marketplace, Lynndale Farm Shops, Vinyl Vault Records, Waukesha Antique Mall

► **HIKING:** Explore area parks with a variety of trail levels for most skill levels

► **GOLF:** Moor Downs Golf Course, Morningstar, Naga-Waukee War Memorial Golf Course, Pewaukee Golf Club, Western Lakes Golf Club

► **FIND GUITARS & MURALS** in downtown Waukesha

Weekend ideas



Get inspired with these fun things to do while you're here for a weekend trip. If you're with your family, partner, or pals, you'll find Waukesha Pewaukee has tons to do that will make you want to come back for more!



► PEWAUKEE LAKE FUN

Rent a boat for the day, paddleboard or even learn to surf while you take in all the beauty and fun of Pewaukee Lake.

- Beachside Boat & Bait
- Paddle Pewaukee
- Pontoons on the Move
- Surf Lake Country
- Water's Edge Boat Club at Smokey's

Spend a day on Pewaukee Beach.

► FUN ON THE FOX

Take to the Fox River, where there are a variety of paddle boats, floats, canoes, and kayaks for rent at High Roller Fun Rentals.

► SHOP

Experience the Waukesha Farmers' Market – it's incredible and only on Saturday mornings May - October!

Our local boutiques will have you wishing you had more time to shop to find unique treasures.

► GOLF

Tee off and enjoy a round of golf – see page 16 for local courses.

► OUTDOORS

Head out to hike, bike, and enjoy nature at our parks and trails.

► MUSEUMS

Tour the Waukesha County Historical Society and Museum to learn about Les Paul and the area's history. Or plan a trip to Old World Wisconsin or Ten Chimneys.

► FOOD & DRINK

Hit the dining scene and find a delightful variety of culinary experiences.

If libations are your thing, tour Raised Grain Brewery or North Pillar Brewing Co.

► EVENTS

Check local event calendars for live music, theater performances, and other cultural events happening over the weekend.

Depending on the season, you can catch a local sports game.

► FIND MORE INFORMATION & IDEAS

Head over to visitwaukesha.org/blog for details on these ideas and more!

FOR COUPLES

Make your next date night extra special by checking out some of these romantic and charming local gems.

► INDULGE IN AN ADULT BEVERAGE:

WINE BARS: Crush Wine Bar, Spring City Wine House, Twisted Vine Wine Shop

BREWERIES AND BEER GARDENS: North Pillar Brewing, Raised Grain Brewing, The Tap Yard

► **DATE NIGHT DINNERS:** Artisan 179, Butler Inn of Pewaukee, La Tavola, The Beach House Bistro, Tofte's Table, Travieso

► **CHARCUTERIE & PICNIC:** Make your own charcuterie plate or board at the Charcuterie House in Waukesha and head to one of our area parks to explore!

► **DIY EXPERIENCES:** A Stroke of Genius, Chef Pam's Kitchen, Fisk Avenue, The Potter's Shop

Events

Experience our year-round, fun and exciting events that bring people together to celebrate, shop, exercise and enjoy!



There are **35+** major events held every year in Waukesha Pewaukee



JANUARY - MARCH

▶ JANUARY

17-26 JANBOREE
City-wide, family fun winter celebration
Waukesha
janboree.org

25-26 MIDWEST HONEY BEE EXPO
The largest bee keeping trade show in the Midwest.
Waukesha County Expo, Waukesha
midwesthoneybeexpo.com

31 WI ANTIQUES DEALERS ASSOCIATION SHOW AND SALE
Waukesha County Expo Center, Waukesha
wisconsinantiquesdealers.com

▶ FEBRUARY

1 WI ANTIQUES DEALERS ASSOCIATION SHOW AND SALE (see above)

2 MILWAUKEE ANTIQUE BOTTLE AND ADVERTISING SHOW
Waukesha County Expo Center, Waukesha
milwaukeebottleclub.org

15 WILD WINTER NIGHTS
Join this candlelight hike at Retzer Nature Center
Retzer Nature Center, Waukesha
waukesha.gov/wildwinternight

22-23 HANDMADE MARKET – ART A LA CARTS
Two halls of high-quality handmade craft items from across the Midwest
Waukesha County Expo Center, Waukesha
artalacarts.com

▶ MARCH

8 GET LUCKY ART CRAWL
Downtown Waukesha
waukeshaart.com

9 BREW CITY BEER SIGN SHOW
Waukesha County Expo, Waukesha
linkvisitwaukesha.com/brewcityad

29-30 CRAZY QUILTERS ANNUAL QUILT SHOW
300+ quilted items on display, special exhibits, raffle and silent auction
Parkview Middle School, Mukwonago
mukwonagocrazyquilters.com

▶ APRIL

5 CATS OF WISCONSIN CAT SHOW
150+ cats, vendor marketplace and more at this CFA Championship Show
Waukesha County Expo Center, Waukesha
catsofwisconsin.weebly.com

6 TRAILBREAKER MARATHON
Full marathon, half marathon and 5K run/walk
Frame Park, Waukesha
runthetrailbreaker.com

▶ MAY

10 PEWAUKEE KIWANIS RIVER RUN
A timed, seven-mile canoe/kayak race ending in Frame Park, Waukesha
Koepp Park, Pewaukee
pewaukeekiwanis.org

▶ JUNE

TBA WERN VALLEY 200 SPORTING CLAYS CHAMPIONSHIP
Six events with purses awarded
Wern Valley Sportsmen's Club, Waukesha
wernvalley.com

20-21 PEWAUKEE KIWANIS BEACH PARTY
Beachfront festival with live music, water activities, food and drink
Pewaukee Lakefront Park, Pewaukee
pewaukeekiwanis.org

APRIL - JUNE

WEEKLY SUMMER EVENTS

▶ WATERFRONT WEDNESDAY CONCERT SERIES
Lakefront Park, Pewaukee
positivelypewaukee.com/events

▶ PEWAUKEE LAKE COUNTRY/FARMERS' MARKET
Wednesdays, Galilee Lutheran Church, Pewaukee
galileelc.org

▶ PEWAUKEE LAKE WATER SKI SHOWS
Thursdays, Lakefront Park, Pewaukee
plwsc.org

▶ WAUKESHA FRIDAY NIGHT LIVE
Multiple stages of live music set in the downtown
Downtown Waukesha
waukeshafridaynightlive.com

▶ WAUKESHA FARMERS' MARKET
Saturdays, Downtown Waukesha
waukeshafarmersmarket.com



Events



JULY - SEPTEMBER

▶ JULY

16-20

WAUKESHA COUNTY FAIR

Celebrating 181 years with animals, food, farm displays, live music
Waukesha County Expo Center, Waukesha
waukeshacountyfair.com

26-27

WAUKESHA KENNEL CLUB ALL BREED DOG SHOW

Waukesha County Expo Center, Waukesha
waukeshakennelclub.org

▶ AUGUST

2

RED HOT BBQ ART CRAWL

Downtown Waukesha
waukeshaart.com

10

CAR SHOW IN THE PARK

Hundreds of cars, live music, food and fun
Frame Park, Waukesha
waukeshaoldcarclub.org

14-16

CERAMIC AND FIRED ARTS SHOW

Demonstrations, competitions, new color lines and more
Waukesha County Expo Center, Waukesha
ceramicshop.com

23

DONNA LEXA MEMORIAL ART SHOW

Juried art festival, entertainment, kids area and food
Wales Community Park, Wales
donnaexamemorialartfair.org

29-31

WISCONSIN HIGHLAND GAMES

All things Scottish, Celtic and Irish festival celebration
Waukesha County Expo Center, Waukesha
wisconsinsscottish.org

▶ SEPTEMBER

19-20

WAUKESHA OKTOBERFEST

Music, food, drink and Deutschland fun
Frame Park, Waukesha
linkvisitwaukesha.com/oktoberfest

20

APPLE HARVEST FESTIVAL

Apple market, children's games, hayrides, hiking and more
Retzer Nature Center, Waukesha
waukeshacounty.gov/appleharvestfestival

29-31
WISCONSIN HIGHLAND GAMES
All things Scottish, Celtic and Irish festival celebration
Waukesha County Expo Center, Waukesha
wisconsinsscottish.org

▶ **SEPTEMBER**

19-20
WAUKESHA OKTOBERFEST
Music, food, drink and Deutschland fun
Frame Park, Waukesha
linkvisitwaukesha.com/oktoberfest

20
APPLE HARVEST FESTIVAL
Apple market, children's games, hayrides, hiking and more
Retzer Nature Center, Waukesha
waukeshacounty.gov/appleharvestfestival

▶ **OCTOBER**

Fridays & Saturdays
FEAR GROUNDS
Themed haunted houses specializing in terror
Waukesha County Expo Center, Waukesha
wisconsinfeargrounds.com

3-4
WI ANTIQUES DEALERS ASSOCIATION SHOW & SALE
Waukesha County Expo Center, Waukesha
wisconsinantiquesdealers.com

TBA
LAKE COUNTRY CANINE CARNIVAL
Kiwanis Village Park, Pewaukee
facebook.com/PewaukeeParksAndRecreation

4
FALL ART CRAWL
Downtown Waukesha
waukeshaart.com

▶ **DECEMBER**

1-31
COUNTRY CHRISTMAS
Wisconsin's largest drive-through holiday lights display
The Ingleside Hotel, Pewaukee
thecountrychristmas.com

5-6
MISTLETOE MARKET CRAFT & ART FAIR
Waukesha County Expo Center, Waukesha
artlacarts.com

6
HAPPY HOLIDAY ANGEL ART CRAWL
Downtown Waukesha
waukeshaart.com

7
MILWAUKEE MINIATURE MOTORS TOY SHOW
Model car racing and memorabilia show
Waukesha County Expo Center, Waukesha
linkvisitwaukesha.com/mkeminimotors

14
WAUKESHA CHRISTMAS PARADE
Downtown Waukesha
waukeshaworks.com

OCTOBER - DECEMBER

SCAN
for our "this week"
blog post featuring
local workshops,
specials & local events



SCAN
for more event
information

Where to stay

Waukesha Pewaukee has just the right place to unwind, recharge, and enjoy your visit. Whether you're here on business, with the family, or on a romantic getaway, get ready to discover your home away from home. We have a wide range of options to suit most budgets and taste. So, dive in and find a delightful place to stay.



AMENITIES KEY:

- Pet friendly
- Swimming pool
- Event space
- Complimentary breakfast
- Complimentary parking



avid HOTEL MILWAUKEE WEST – WAUKESHA
2101 Meadow Lane, Pewaukee
(800) 424-6835
visitwaukesha.org/avid-hotel

Where the essentials are done exceptionally well! Located just off the Hwy T exit I-94, this 95 room avid Hotel caters to the needs of leisure & business travelers with comfortable, quiet and charming hotel rooms for a best night sleep. EV stations available.



BAYMONT INN & SUITES
2111 East Moreland Boulevard, Waukesha
(262) 547-7770
visitwaukesha.org/baymont

Conveniently located just a short drive from I-94, the Baymont offers 90 quality guestrooms – including whirlpool suites. Enjoy the many shopping and dining options close by.



BEST WESTERN WAUKESHA GRAND
2840 North Grandview Blvd, Pewaukee
(262) 524-9300
visitwaukesha.org/bestwestern

With quick and easy access to I-94, Best Western Waukesha Grand offers 90 rooms including whirlpool rooms. Close proximity to many dining options.



COMFORT INN
2510 Plaza Court, Waukesha
(262) 786-6015
visitwaukesha.org/comfort-inn

Conveniently located to I-94, travelers will appreciate the ease, convenience, comfort and value offered with 100 guestrooms, and a staff with a “can-do” attitude.



EXTENDED STAY AMERICA MILWAUKEE – WAUKESHA
2520 Plaza Court, Waukesha
(262) 798-0217
visitwaukesha.org/extended-stay

Whether you're staying one night or 20 nights, Extended Stay America Milwaukee-Waukesha is your home away from home. With 122 updated guestrooms designed with the convenience you need to make your stay comfortable.



HOLIDAY INN PEWAUKEE-MILWAUKEE WEST
N14 W24140 Tower Place, Pewaukee
(800) 333-3333
visitwaukesha.org/holiday-inn

With a Frank Lloyd Wright inspired design, the Holiday Inn features furnishings befitting prairie style architecture and 119 executive class guestrooms that offer oversized bathrooms and workstations.



Where to stay

FAST FACTS



Coming soon: the Cobblestone Inn, a 60-room hotel opening in downtown Waukesha in 2026!

Waukesha Pewaukee has over **1,300** hotel rooms

8 of our hotels are **pet friendly**.



THE CLARKE HOTEL
314 West Main Street, Waukesha
(262) 549-3800
visitwaukesha.org/the-clarke-hotel

Located in Waukesha's charming and historic downtown, The Clarke Hotel is the essence of boutique style – with 20 individually designed guestrooms, plus a 1,750 square foot ballroom and private meeting spaces



THE INGLESIDE HOTEL
2810 Golf Road, Pewaukee
(800) 247-6640
visitwaukesha.org/the-ingleside-hotel

The Ingleside Hotel is in harmony with its surroundings and those who come to enjoy it and is a gathering place for leisure and business travelers with 194 guestrooms and suites, Didi's Supper Club, 40,000 square feet of event spaces and the Springs Waterpark.



MILWAUKEE MARRIOTT WEST
W231 N1600 Corporate Court, Waukesha
(800) 228-9290
visitwaukesha.org/marriott-west

The Milwaukee Marriott West is your gateway to discovering Milwaukee with 281 deluxe guestrooms and suites, 24-hour business center, BLVD Kitchen & Bar and 10,000 square feet of event space.



PRICE POINTE INN
532 Bluemound Road, Waukesha
(414) 213-6861
visitwaukesha.org/price-point-inn

The Price Pointe Inn is a 23-room inn offering amenities any budget-conscious traveler is searching for, with quick access to I-94 and a lower level lounge.



WILDWOOD LODGE PEWAUKEE
N14 W24121 Tower Place, Pewaukee
(888) 506-2005
visitwaukesha.org/wildwood

Experience the comfort and charm of Wildwood Lodge Pewaukee, a Northwoods-inspired hotel nestled in the heart of Lake Country. Conveniently located near I-94, the recently updated hotel features 94 spacious, suite-style guest rooms complete with sofa sleepers, providing the perfect blend of comfort and convenience and 1,100 sq ft of versatile meeting space.



AMENITIES KEY:



Food & Drink

When we say dining in Waukesha Pewaukee has something for everyone, we truly mean it! From local cozy cafes to family-friendly restaurants, our cities offer an abundance of options to amaze your taste buds. Now's the time to loosen your belt, grab your fork, and figure out where to dig in.



Artisan 179



Where will your culinary adventure begin? Choose from **80+** restaurants, cafes and bars in Waukesha & Pewaukee

HOMEGROWN MUST-TRY FOOD EXPERIENCES

You'll only find these restaurants in Waukesha Pewaukee. Make the most of your culinary excursions by trying these one-of-a-kind establishments.

▶ **JIMMY'S GROTTO.** Get the Ponza Rotta, a folded, deep-fried pizza. You can thank us later.

▶ **5 O'CLOCK CLUB.** A storied supper club with a home style feel serving American classics.

▶ **LA ESTACION.** Mexican fare in a beautiful historic train depot.

▶ **ARTISAN 179.** From-scratch global cuisine using the freshest ingredients served with a lake view.

▶ **TOFTE'S TABLE.** Affordable upscale comfort food created with seasonal ingredients in a warm and inviting atmosphere.

▶ **TRAVIESO.** A new, modern destination and (already) critically acclaimed Latin fusion restaurant.

▶ **TALLY'S TAP & EATERY.** A sports bar serving homemade American comfort food, craft beer, and cocktails.

AMERICAN

ANDREA'S RED ROOSTER
N14W22032 Watertown Road, Pewaukee
andreasredrooster.net

ARTISAN 179
179 West Wisconsin Avenue, Pewaukee
artisan179.com

BACKSTREET PUB
711 Morgan Avenue, Waukesha
backstreetpubwaukesha.com

BUBBA'S FROZEN CUSTARD
1276 Capitol Drive, Pewaukee
bubbafrozenscustard.com

CUE CLUB OF WISCONSIN
2454 North Grandview Boulevard, Waukesha
cueclubofwi.com

GINA'S SPORTS DOCK
W278 N2345 Prospect Ave, Pewaukee
linkvisitwaukesha.com/ginas

GOLDEN CORRAL
1673 Arcadian Avenue, Waukesha
linkvisitwaukesha.com/goldencorral

JACK'S CAFE
N4W22496 Bluemound Road, Waukesha
jackscafewi.com

JOEY'S DINER
290 W. Main Street, Waukesha

JOHN'S DRIVE-IN
1317 Arcadian Avenue, Waukesha
johnsdrivein.weebly.com

MAINSTREAM BAR & GRILL
404 West Main Street, Waukesha
mainstreambarandgrill.com

MUGSHOTZ BAR & GRILL
W270 N2793 Elm Avenue, Pewaukee
pewaukeemugshotz.com

PARK AVENUE PIZZA CO.
121 Park Avenue, Pewaukee
parkavenuepizzacompany.com

PEOPLE'S PARK
337 West Main Street, Waukesha
peoplesparkwaukesha.com

POINT BURGER BAR
W229N1400 Westwood Drive, Waukesha
pointburgerbarpewaukee.com

ROCHESTER DELI, INC.
143 West Broadway Street, Waukesha
rochesterdeli.com

SOBELMAN'S PUB & GRILL
332 Williams Street, Waukesha
sobelmanspubandgrill.com

SPORTIES SPORTS BAR AT SUNSET BOWL
333 West Sunset Drive, Waukesha
sunset-bowl.com

SPRING CITY RESTAURANT
2820 North Grandview Boulevard, Pewaukee
springcityrestaurant.com

SUNSET FAMILY RESTAURANT
535 West Sunset Drive, Waukesha
linkvisitwaukesha.com/sunsetfamilyrest

SWEET DREAMS BURGER & CUSTARD SHOPPE
332 W. Broadway, Waukesha
sweetdreams-wi.com

TALLY'S TAP & EATERY
S31W24661 West Sunset Drive, Waukesha
tallystap.com

TEXAS ROADHOUSE
2513 Plaza Court, Waukesha
texasroadhouse.com

THE CHOCOLATE FACTORY
161 West Wisconsin Avenue, Pewaukee
2120 East Moreland Boulevard, Waukesha
thechocolatefactorywi.com

THE COOP RESTAURANT
350 Delafield Street, Waukesha
thecoopwi.com

THE CROSSINGS RESTAURANT
N20W22951 Watertown Road, Waukesha
linkvisitwaukesha.com/thecrossings

THE NEIGHBORS BAR & GRILLE
S16 W22255 Arcadian Avenue, Waukesha
theneighborsbarandgrille.com

THE ROX BAR & GRILLE
2820 North Grandview Boulevard, Pewaukee
theroxbar.com

THE STATION PUB & GRILL
W226 N3013 Duplainville Road, Pewaukee
the-station-pub.com

THUNDER BAY GRILLE
N14 W24130 Tower Place, Pewaukee
thunderbaygrille.com/pewaukee

TOFTE'S TABLE
331 Riverfront Plaza, Waukesha
toftestable.com

WISCONSIN MACHINE SHED
N14 W24145 Tower Place, Pewaukee
machineshed.com/pewaukee



Rochester Deli



Wisconsin Machine Shed

SCAN
to get more details
on food & drink
info. & places



Food & Drink

▶ ASIAN

ASIANA

1198 George Towne Drive, Pewaukee
asianahibachi.m988.com

FENG'S KITCHEN

1840 Meadow Lane, Waukesha
fengskitchen.com

GOLDEN GATE

1427 East Racine Avenue, Waukesha
goldengaterestaurant.com

KIM'S GARDEN

137 West Sunset Drive, Waukesha
eatkimgarden.com/menu

KING'S WOK

1256 West Capitol Drive, Pewaukee
pewaukeeingswok.com

LEGONG GOURMET

2140 West Saint Paul Avenue, Waukesha
legonggourmetwi.com

MEIJI CUISINE

2503 Plaza Court, Waukesha
meijicuisine.com

NEW CHINA BUFFET

1801 Gateway Drive, Waukesha
newchinabuffetwi.com

OSAKA RAMEN & HIBACHI

2128 Silvernail Road, Pewaukee
osaka-waukesha.com



Asiana

▶ BREWERIES & WINE

BREWFINITY BREWING CO. (OPENING SPRING 2025)

203 West Wisconsin Avenue, Pewaukee
brewfinitybrewing.com

CRUSH WINE BAR

378 West Main Street, Waukesha
crushwineandsocial.com

NORTH PILLAR BREWING COMPANY

212 East North Street, Waukesha
northpillarbrewing.com

RAISED GRAIN BREWING COMPANY

1725 Dolphin Drive, Waukesha
raisedgrainbrewing.com

SPRING CITY WINE HOUSE

336 West Main Street, Waukesha
springcitywinehouse.com

TWISTED VINE WINE SHOP & BAR PEWAUKEE

145 West Wisconsin Avenue, Pewaukee
twistedvinewineshopandbarwi.hibuwebsites.com

SCAN

for info. on bars,
breweries
& wine



Raised Grain

▶ BREAKFAST OR BRUNCH

BLVD KITCHEN & BAR, MILWAUKEE MARRIOTT WEST

W231N1600 Corporate Court, Waukesha
linkvisitwaukesha.com/blvd

BREWERS TWO CAFE

203 West Wisconsin Avenue, Pewaukee
brewerstwocafe.com

CAFE DE ARTS ROASTERY

830 W St Paul Avenue, Waukesha
cafedearts.com

COPILOT COFFEE CO.

363 West Main Street, Waukesha
copilotcoffeeco.com

DADY-OH'S RESTAURANT

250 W. Broadway Street, Waukesha

DAVE'S RESTAURANT

316 W. Broadway Street, Waukesha
linkvisitwaukesha.com/daves

DIDI'S SUPPER CLUB

2810 Golf Road, Pewaukee
theinglesidehotel.com/dining

FIRST WATCH

1466 Capitol Drive, Pewaukee
firstwatch.com/locations/pewaukee

FUZZY'S SPORTS PUB & GRILL

627 East Main Street, Waukesha
linkvisitwaukesha.com/fuzzys

GOOD EATS CAFE

1405 Capitol Drive, Pewaukee
goodeatspewaukee.com

HOP HARVEST & VINE

2205 Silvernail Road, Pewaukee
hopharvestvine.com

LA CABANA

701 North Grandview Boulevard, Waukesha
linkvisitwaukesha.com/lacabana

LA ESTACION

319 Williams Street, Waukesha
laestacionrestaurant.com

MACHINE SHED RESTAURANT

N14 W24145 Tower Place, Pewaukee
machineshed.com/pewaukee

MAMA D'S

928 North Hartwell Avenue, Waukesha
mamadcoffee.com

PEOPLE'S PARK

337 West Main Street, Waukesha
peoplesparkwaukesha.com



Brewers Two Cafe

SPRING CITY RESTAURANT

2820 North Grandview Boulevard, Pewaukee
springcityrestaurant.com

SUNSET FAMILY RESTAURANT

535 West Sunset Drive, Waukesha
linkvisitwaukesha.com/sunsetfamilyrest

THE COOP RESTAURANT

350 Delafield Street, Waukesha
thecoopwi.com

THE CROSSINGS RESTAURANT

N20W22951 Watertown Road, Waukesha
linkvisitwaukesha.com/crossrest

THE STEAMING CUP

340 West Main Street, Waukesha
thesteamingcup.com

THUNDER BAY GRILLE

N14 W24130 Tower Place, Pewaukee
thunderbaygrille.com/pewaukee

WAUKESHA CAFE HOUSE

410 Wisconsin Avenue, Waukesha
waukeshacafehouse.com



Fuzzy's Sports Pub & Grill

Food & Drink

▶ GREEK

SUNSET FAMILY RESTAURANT

535 West Sunset Drive, Waukesha
linkvisitwaukesha.com/sunsetfamilyrest

THE BEACH HOUSE BISTRO

161 West Wisconsin Avenue, Pewaukee
thebeachhousebistro.com



Mia's Waukesha



The Beach House Bistro

▶ INDIAN

INDIAN VILLAGE RESTAURANT & BAR

1345 S. West Sunset Drive, Waukesha
linkvisitwaukesha.com/indianvillagewaukesha



Jimmy's Grotto

▶ ITALIAN

DOC'S DRY DOCK

N38W27091 Parkside Road, Pewaukee
docsdrydock.com

JIMMY'S GROTTA

314 East Main Street, Waukesha
jimmysgrotto.com

LA TAVOLA

161 Wisconsin Avenue #1-H, Pewaukee
latavolaonthebeach.com

MAGELLAN'S ON MAIN STREET

370 West Main Street, Waukesha
magellansonmain.wordpress.com

MARCO'S PIZZA

139 East Broadway Street, Waukesha
marcos.com/menu

MIA'S WAUKESHA

800 Clinton Street, Waukesha
miasofwaukesha.com

MICHAEL'S ITALIAN-AMERICAN RESTAURANT

1400 South Grand Avenue, Waukesha
michaelsitalianrestaurant.net

PARK AVENUE PIZZA CO.

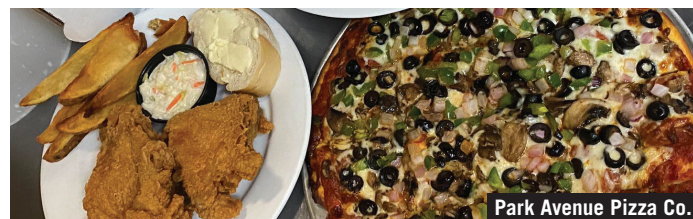
121 Park Avenue, Pewaukee
parkavenuepizzacompany.com

PIZZA RANCH

930 Fleetfoot Drive, Waukesha
linkvisitwaukesha.com/pizzaranch

SAL'S PIZZA

823 West Moreland Boulevard, Waukesha
salspizzaandmore.com



Park Avenue Pizza Co.

▶ MEXICAN

AREPANITAS CAFE

804 Clinton Street, Waukesha
arepanitas.com

CASA TEQUILA – PEWAUKEE & WAUKESHA

1405 Capitol Drive, Pewaukee
2423 Kossow Road, Waukesha
mycasatequila.com

EL SOL DE MEXICO

309 East Broadway, Waukesha
linkvisitwaukesha.com/elsol

LA CABANA

701 North Grandview Boulevard, Waukesha
linkvisitwaukesha.com/lacabana

LA ESTACION

319 Williams Street, Waukesha
laestacionrestaurant.com

MARGARITA'S MEXICAN GRILL

453 West Main Street, Waukesha
linkvisitwaukesha.com/margaritas

PLAZA GARIBALDI

2301 Silvernail Road, Pewaukee
linkvisitwaukesha.com/plazagaribaldi

SEESTER'S MEXICAN CANTINA

161 West Wisconsin Avenue, Pewaukee
seestersmexicancantina.com

TACO JALISCO

801 West Moreland Blvd Unit C, Waukesha
taco-jalisco.net

TAQUERIA EL PALMAR

145 West Main Street, Waukesha
linkvisitwaukesha.com/elpalmar

THE SPANISH TRAVELER

2104 Silvernail Road, Pewaukee
thespanishtraveler.com

TRAVIESO LATIN FUSION

314 West Main Street, Waukesha
traviesolatinfusion.com



Travieso Latin Fusion

WHERE THE LOCALS EAT

Take this insider scoop and dine like you live here. From casual to upscale, each restaurant has perfected its craft.

▶ **BURGERS:** Andrea's Red Rooster, Bubba's, Mainstream, Sobelman's

▶ **BREAKFAST:** First Watch, Good Eats, Machine Shed Restaurant, The Coop

▶ **PIZZA:** Doc's Dry Dock, Magellan's, Mia's Waukesha, Park Avenue Pizza, Sal's

▶ **KID-FRIENDLY:** John's Drive-In, Machine Shed, Point Burger Bar, The Chocolate Factory

▶ **FISH FRY:** 5 O'Clock Club, Backstreet Pub, Cue Club, Neighbors Bar & Grill

▶ **FISH SANDWICH:** Bubba's, Thunder Bay Grille

▶ **SMALL PLATES:** Beach House Bistro, Tofte's Table

▶ **SOUPS AND SANDWICHES:** Jack's Café, Rochester Deli, Machine Shed, The Steaming Cup



5 O'Clock Club

▶ SUPPER CLUBS

5 O'CLOCK CLUB

N28W26658 Peterson Drive, Pewaukee
the5oclockclubpewaukee.com

BUTLER INN

742 Glacier Road, Pewaukee
butlerinnofpewaukee.com

SILVERNAIL INN

2903 North Grandview Boulevard, Pewaukee
silvernailinn.com

▶ THAI

MOM'S KITCHEN

2177 Silvernail Road, Pewaukee
mom-kitchen.com

Shopping

You'll love our diverse shopping spots, from charming boutiques to unique specialty shops. Take in the local culture while finding the perfect memento of your stay here in Waukesha Pewaukee. Happy shopping!



Antiques & Uniques



Burlap & Lace Marketplace



The Charcuterie House

▶ DOWNTOWN WAUKESHA

Discover the eclectic art galleries and specialty shops in our walkable downtown Waukesha shopping district.

ADAMS TOYS & COLLECTIBLES
244 West Main Street
linkvisitwaukesha.com/adamstoy

ALLÔ! CHOCOLAT
234 West Main Street
allochocolat.com

ALMONT GALLERY
342 West Main Street
almontgallery.org

ANTIQUES AND UNIQUES ON MAIN
250 West Main Street
antiquesuniquesmall.com

ART & FRAMING 1-2-3
311 West Main Street
antiquesuniquesmall.com

BURLAP & LACE MARKETPLACE
272 West Main Street
linkvisitwaukesha.com/burlapandlace

DISTINKTIVE MERCH CO
380 West Main Street
distinktivemerchco.com

DONUT SQUAD WAUKESHA
308 West Broadway
linkvisitwaukesha.com/donutsquad

EASY AQUA FISH & CORAL
307 West Main Street
easyaquafishcoral.com

FISK AVENUE
840 North Grand Avenue
fiskavenue.com

JEST FOR FUN JOKE SHOP
265 West Main Street
jestforfunjokeshop.com

MARTHA MERRELL'S BOOKS & TOYS
231 West Main Street
marthamerrellbooks.com

MARY JANE'S
335 West Main Street
facebook.com/maryjaneshemp

METROPOLITAN ANTIQUES & GIFTS
259 West Main Street
linkvisitwaukesha.com/metropolitangifts

MUSIC RECORDS 262
801 Clinton Street
linkvisitwaukesha.com/musicrecords262

PLOWSHARE FAIR TRADE MARKETPLACE
219 West Main Street
plowshareftm.org

SCOTT'S JEWELRY SHOP
880 North Grand Avenue
scottscreativetrenz.com



Plowshare Fair Trade Marketplace

THE CHARCUTERIE HOUSE
349 West Broadway Street
thecharcuteriehouse.com

THE PICKY PICKY RESALE SHOP
301 West Main Street
linkvisitwaukesha.com/pickypicky

OUTPOST MUSIC
321 South Street
outpostmusicwi.com

TOPAZ APOTHECARY
804 North Grand Avenue
topazapothecary.com

VINYL VAULT RECORDS
275 West Main Street
linkvisitwaukesha.com/vinylvault

▶ LYNNDALE FARMS

A collection of five stores located in a historic barn, Lynndale Farms sells unique home decor, accents, and apparel crafted by over 50 local artisans. The shops include Molly's Gluten-Free Bakery, Roost Mercantile, The Homestead, The Cottage and Vintage Barn Chicks.



Vintage Barn Chicks



Roost Mercantile

SCAN
to get more
details
on shops



Shopping



There are over 45 boutique and specialty shops within Waukesha & Pewaukee



Sienna Moon



designXchange



Wooden Hanger



Beach Bum Bakery

▶ PEWAUKEE LAKE AREA

Take a stroll along Wisconsin Avenue near Pewaukee Lake or a short mile walk or drive to check out these area shops.

BANK OF FLOWERS

346 Oakton Avenue, Pewaukee
bankofflowers.com

BEACH BUM BAKERY

161 West Wisconsin Avenue, Pewaukee
beachbumbakery.com

BIG GUY'S MAGIC SHOP

125 Oakton Avenue, Pewaukee
bigguysmagic.com

DESIGNXCHANGE PORCH AND PANTRY

175 Main Street, Pewaukee
designxchange.biz

HARVEST HOME

505 West Capitol Drive, Pewaukee
harvesthomepewaukee.com

MXYN BOUTIQUE

145 Wisconsin Avenue Unit #3, Pewaukee
linkvisitwaukesha.com/myxnscents

SIENNA MOON

213 W Wisconsin Avenue, Pewaukee
siennamoonco.com

SIMPLY CINNAMON BAKERY

115 Oakton Avenue, Pewaukee
linkvisitwaukesha.com/simplycinnamon

WOODEN HANGER

169 Main Street, Pewaukee
woodenhanger.biz

▶ SPECIALTY SHOPS

These specialty shops located within Waukesha and Pewaukee are just a short drive from I-94 and offer distinctive products for hunting, fishing, art, and more!

BLACK GOLD SPORTS CARDS

2327 Silvernail Road, Pewaukee
blackgoldcards.com

BUCK RUB OUTFITTERS

N13 W28400 Silvernail Road, Pewaukee
buckrubarchery.com

CALS COLLECTABLES AND MANTIQUES

717 North Grandview Boulevard, Waukesha
calscollectables.com

GALLERY 1

507 East Broadway, Waukesha
gallery1art.com

JUST A LITTLE BIT COUNTRY

N4 W22496 Bluemound Road, Waukesha
justalittlebitcountry.com

NORTHWOODS MARINE

601 Ryan Street, Pewaukee
northwoodsmarine.net

PETLICIOUS DOG BAKERY & SPA

2217 Silvernail Road, Pewaukee
petlicious.com

SEW MUCH MORE

2140 West Saint Paul Avenue Ste L, Waukesha
sewmuchmorewi.com

SMOKEY'S MUSKY SHOP

N27 W27250 Woodland Drive, Pewaukee
smokeysmusky.com

SWEET PERFECTIONS BAKE SHOPPE

1501 Paramount Drive, Waukesha
sweetperfections.com

THE POTTER'S SHOP

1314 South West Avenue, Waukesha
pottersshop.com

WAUKESHA ANTIQUE MALL

1427 East Racine Avenue, Waukesha
waukeshaantiquemall.com

WAUKESHA FLORAL & GREENHOUSE

319 South Prairie Avenue, Waukesha
waukeshafloral.com

WAUKESHA SPORTSCARDS

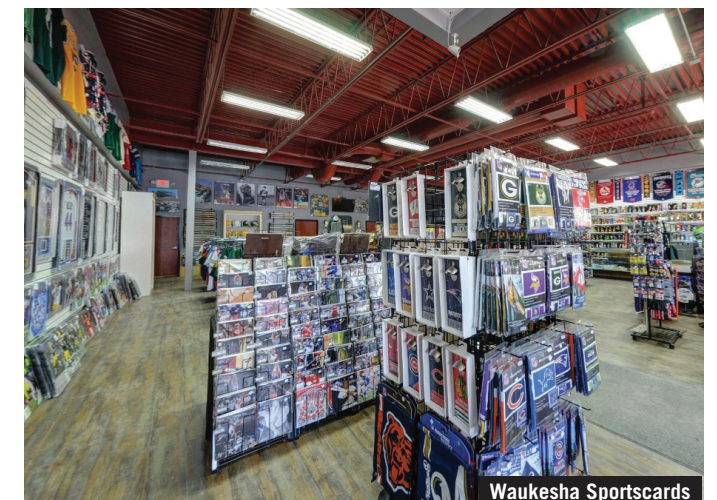
2120 East Moreland Boulevard, Waukesha
waukeshasportscards.com



Buck Rub Outfitters



Waukesha Antique Mall



Waukesha Sportscards

SCAN
to get more
details
on shops





N14 W23755 Stone Ridge Drive
Suite 225
Waukesha, Wisconsin 53188

