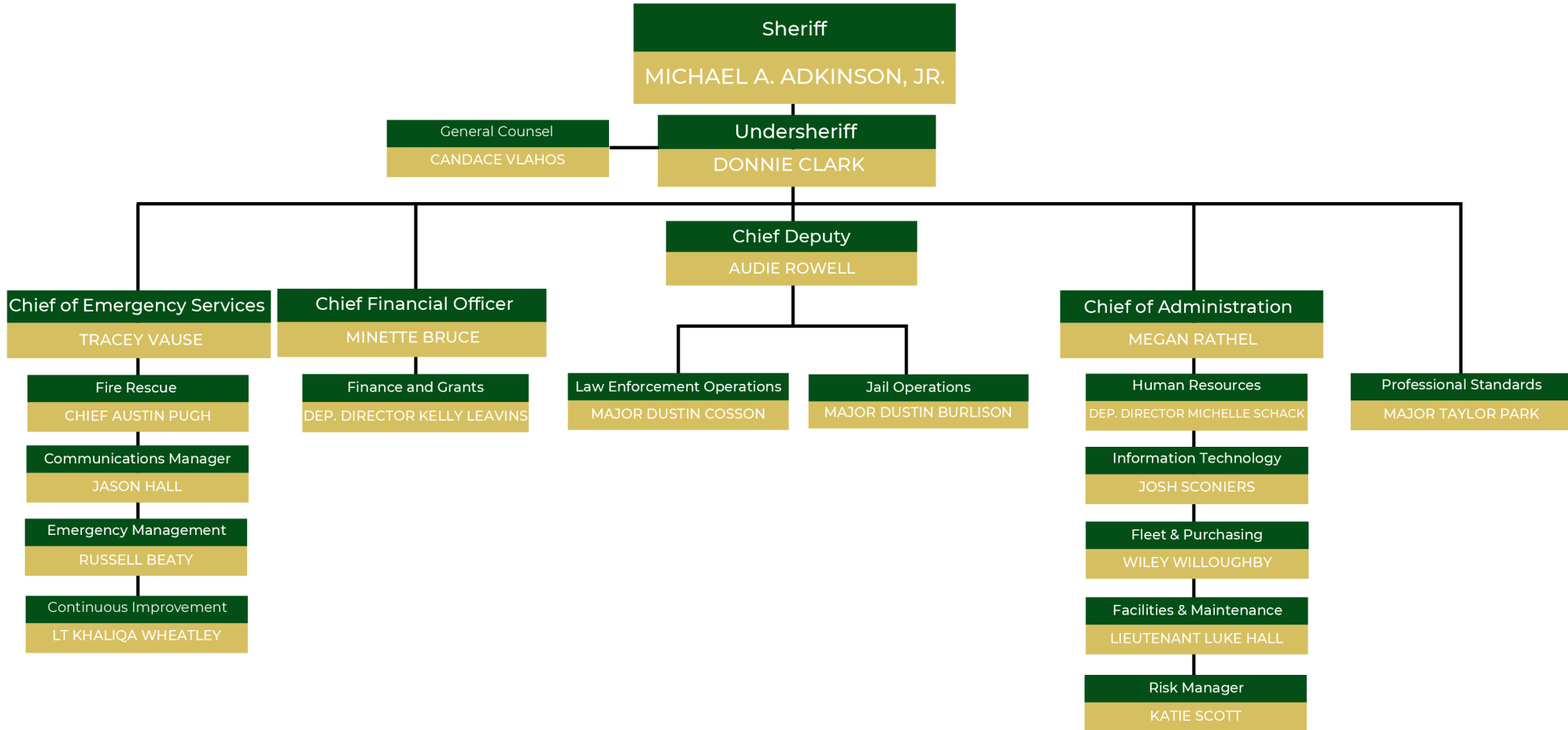




WALTON COUNTY SHERIFF'S OFFICE

Organizational Chart

January 1, 2025

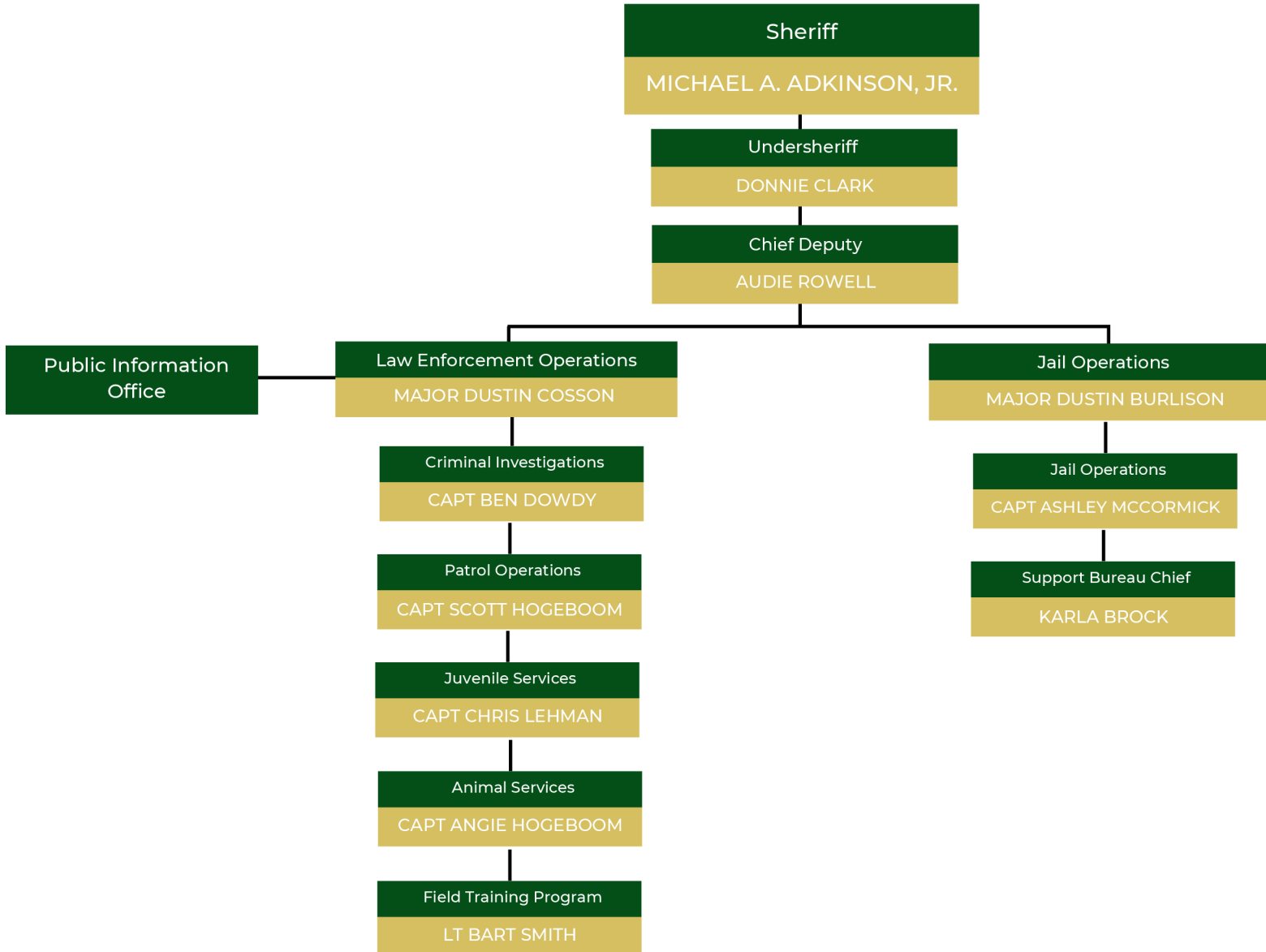




WALTON COUNTY SHERIFF'S OFFICE

LEO and Jail Operations Division

January 1, 2025

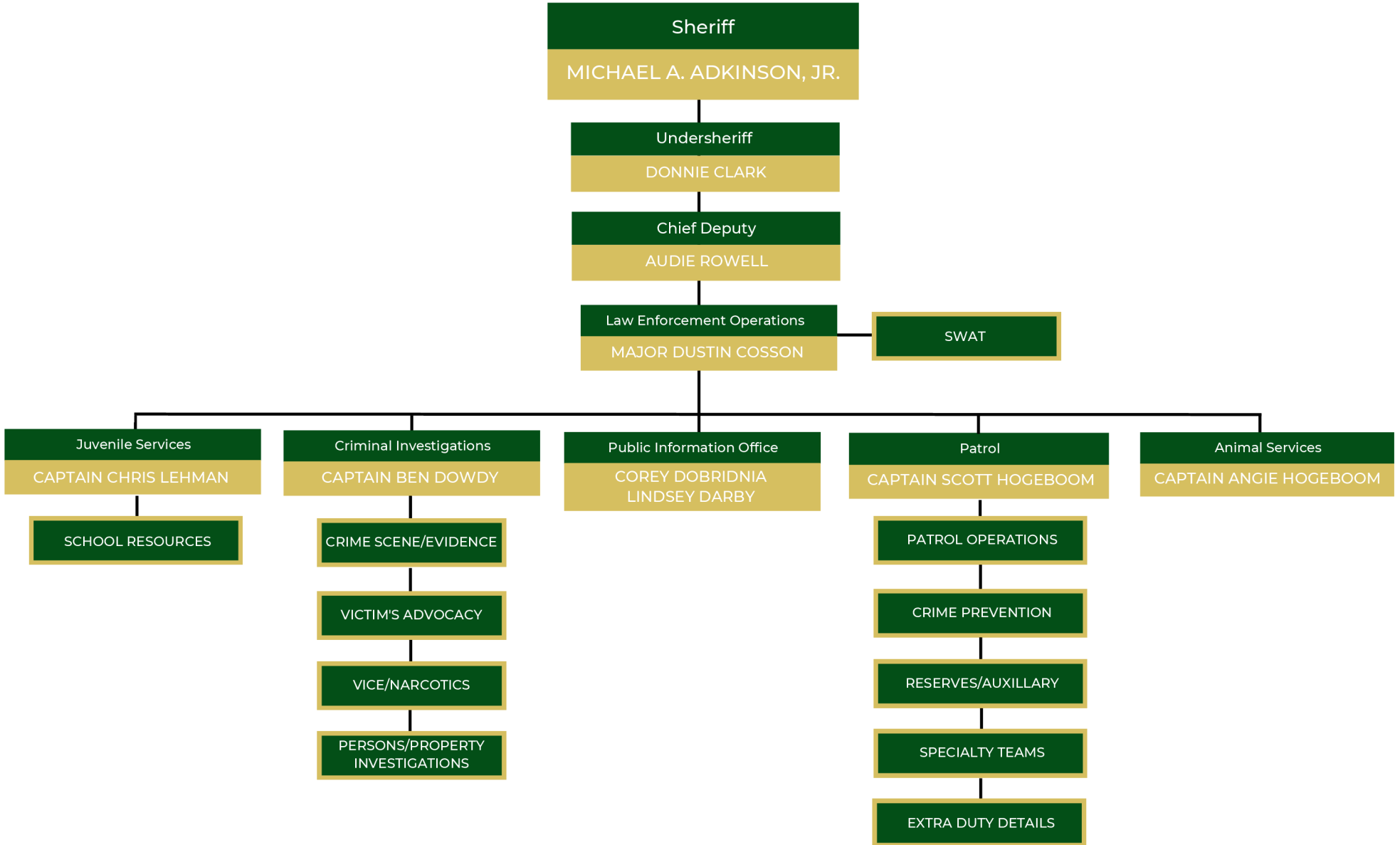




WALTON COUNTY SHERIFF'S OFFICE

Law Enforcement Operations Division

January 1, 2025

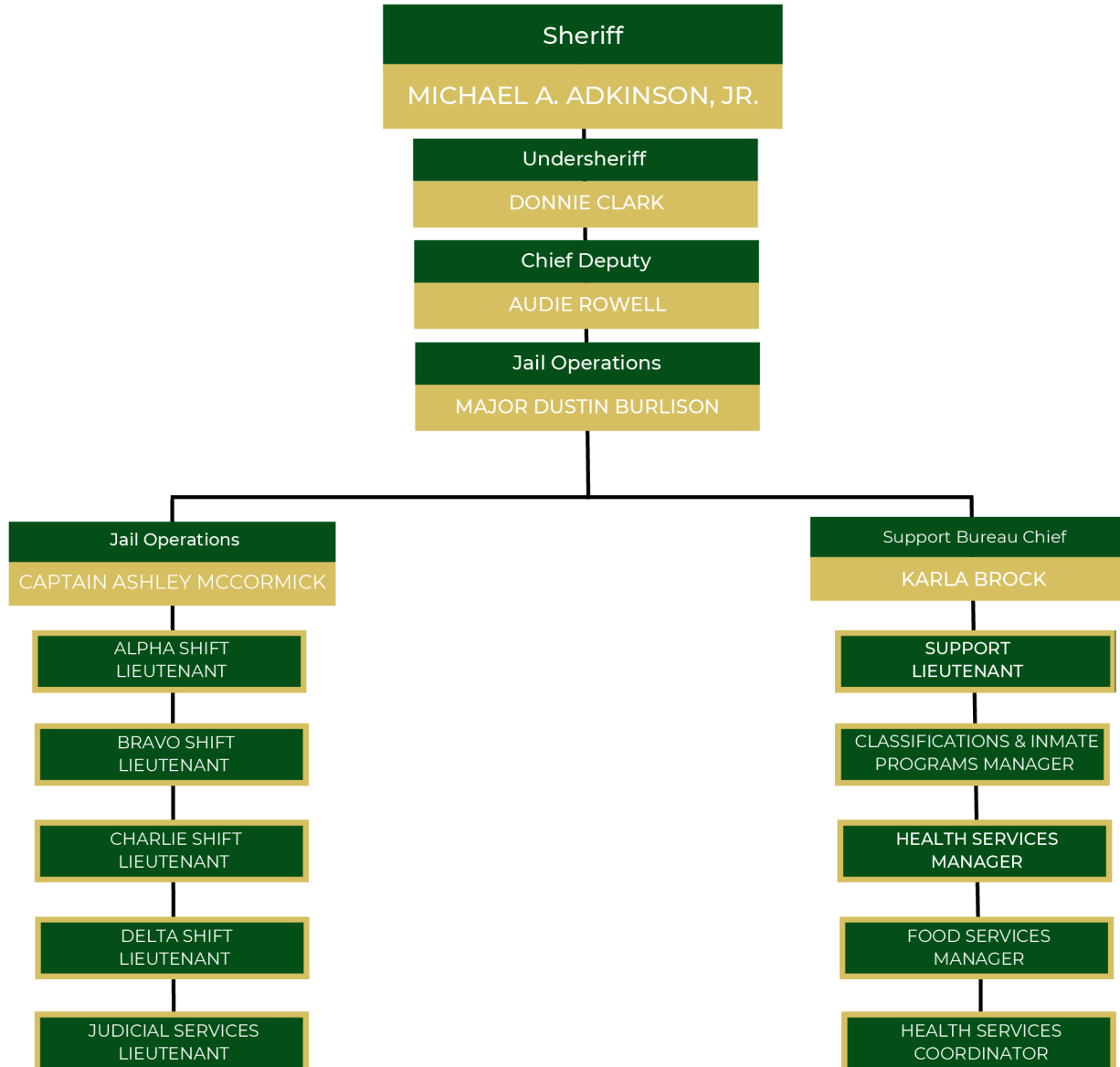




WALTON COUNTY SHERIFF'S OFFICE

Jail Operations

January 1, 2025

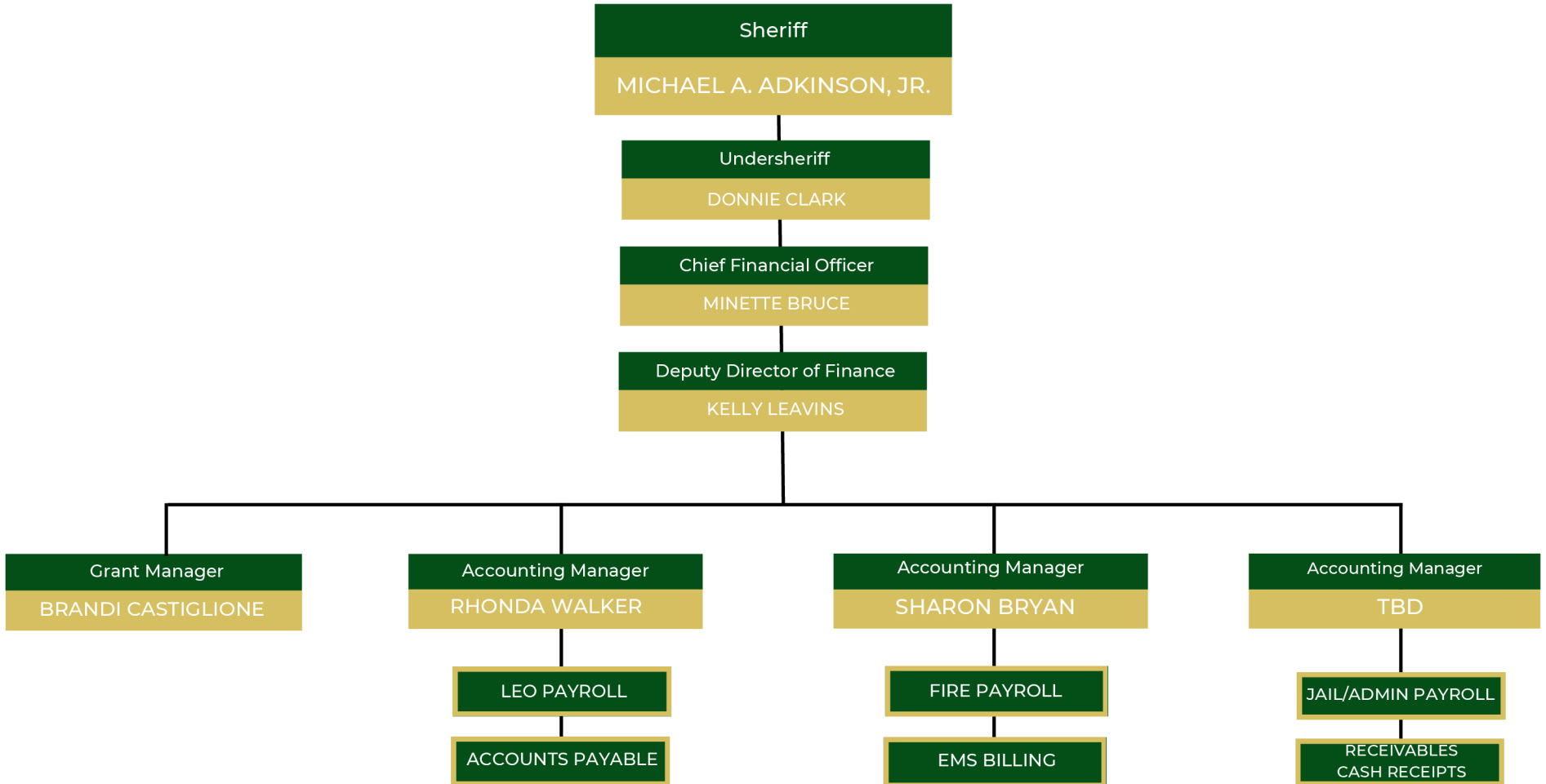




WALTON COUNTY SHERIFF'S OFFICE

Financial Division

January 1, 2025





WALTON COUNTY SHERIFF'S OFFICE

Administration Division

January 1, 2025

Sheriff
MICHAEL A. ADKINSON, JR.

Undersheriff
DONNIE CLARK

Chief of Administration
MEGAN RATHEL

Deputy Director of HR
MICHELLE SCHACK

Fleet & Purchasing
WILEY WILLOUGHBY

Facilities & Maintenance
LT LUKE HALL

HR Operations Manager
TINA BARKER

Benefits & Wellness Manager
ALICIA COOK

Information Technology
JOSH SCONIERS

Risk Management
KATIE SCOTT

PURCHASING

FLEET

POLYGRAPH AND BACKGROUND

DISCIPLINE

APPLICATIONS

PROMOTIONS/TRANSFERS

GOV. REPORTING

HEALTH BENEFITS

WORKERS COMP

MENTAL HEALTH

FMLA

CISM

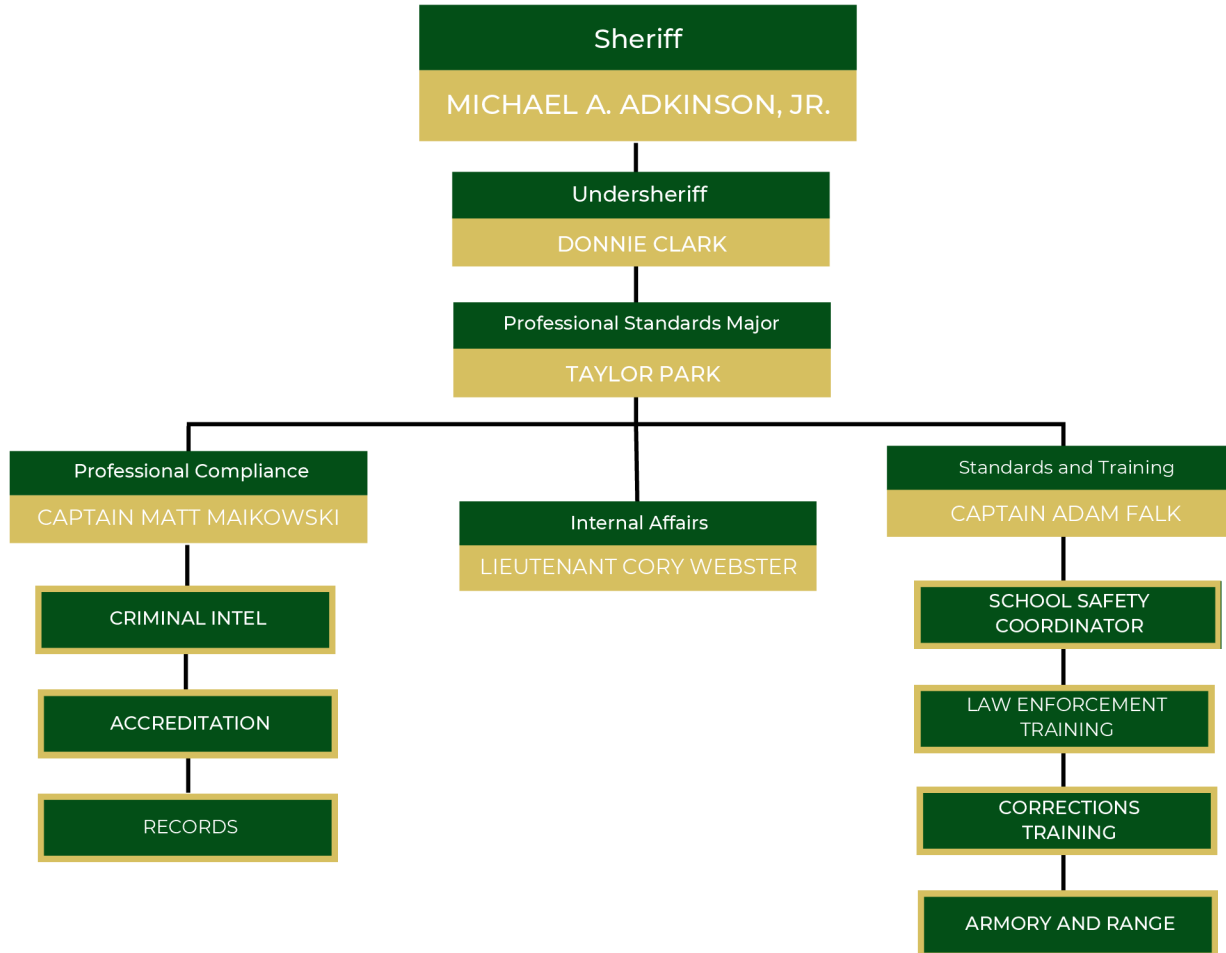
RECRUITING



WALTON COUNTY SHERIFF'S OFFICE

Professional Standards

January 1, 2025





WALTON COUNTY SHERIFF'S OFFICE

Emergency Services Division

January 1, 2025

