



PRODUCT SEARCH

CONTACT US



PRODUCT SEARCH

(click on a product to be redirected to page)

Absolute filters.....	08
Activated carbon.....	75
Activated filter media(AFM).....	75
Anion resins.....	75
Auto shut off valves.....	40
Aquastab.....	75
Bag filters.....	27
Bag filter housing & spares.....	26
Ball valves.....	38
Birm.....	75
Brackets for housing.....	25
Brine tanks.....	60
Brine valves.....	60
Calcite.....	75
Carbon block filters.....	12
Cation resins.....	75
Ceramic filters.....	12
Chemicals:Anticalent,Cleaners.....	96
Clamps for domestic membrane housing.....	25
Coils & plugs for solenoid valves.....	73
Controllers & microprocessors.....	67
Couplings & fittings.....	80
Demin filter cartridges.....	16
Distributors.....	53-56
Dosing pumps.....	72
Dosing tanks.....	58
Diverter valves.....	38
Eezie feed valves.....	38
Faucets.....	39
Filter housings.....	22-24
Filtration valves & softner valves.....	57
Filtration skids.....	50
Float switches.....	71
Flow meters.....	61-62
Flow restrictors.....	44
FRP media vessels.....	51
GAC/ KDF filters.....	18
GAC filters.....	10
Globe valves.....	66
High flow filter housings & filters.....	31
Industrial controls.....	73-74
Inlet/outlet filtration heads.....	56
Inline filter cartridge.....	12,13,14
Jaco fittings.....	95
JPC-4 pump.....	70
KDF media.....	75
KDF filters.....	34
K type filter cartridge.....	14
Leak detectors & leak prevention.....	41
Media.....	75
Meltblown/sediment filters.....	05
Mesh filters.....	09
Mixed bed resin.....	75
Multistage pumps.....	70

Needle valves (stainless steel).....	65
Ozone generators & spares.....	49
Pleated filters.....	07
Post RO carbon filter.....	12-14
Pre-filters.....	5,6,7,8
Pressure boosting pumps.....	70
Pressure & flow controllers.....	67
Pressure gauges.....	64
Pressure reducing valves.....	38
Pressure switches industrial.....	73
Pressure transmitters.....	74
Pumps various.....	70-72
Purifiers domestic.....	33,34
pH fix filter cartridge.....	20
pH fix filter media.....	75
PVC fittings.....	82-83
PVC pipe.....	81
Quick connect push in fittings & pipe.....	84-95
Refillable cartridges.....	15
Remineralising filter.....	20
Reverse osmosis domestic units.....	32
Reverse osmosis domestic units membrane housings.....	26
Reverse osmosis domestic unit pumps.....	69
Reverse osmosis domestic unit spares.....	42
Reverse osmosis industrial units.....	36
Reverse osmosis light industrial units.....	36,37
Reverse osmosis membranes.....	76,77,78
Reverse osmosis membrane pressure vessels.....	79
Reverse osmosis storage/pressure tanks.....	45
Riser pipe.....	53
Saddle clamps.....	38
Scala pump.....	70
Scale prevention cartridges.....	17
Screen filters.....	30
Siliphos.....	75
Silver impreganted post carbon.....	12
Silver impregnated carbon blocks.....	11
Softner complete units.....	59
Softening resin.....	75
Softener salt.....	75
Spanners for housing.....	43
Steel vessels.....	57
Strainers.....	53,54
String wound filters.....	06
Tanin removal cartridges.....	19
Tanin removal resin.....	75
Taste & odour removal post filter.....	12
Ultra filters.....	21
Ultra filtration units.....	35
Ultra violet sterilisers.....	46
Ultra violet steriliser complete units.....	48
Ultra violet steriliser spares (lamps,quarts,ballast,control boxes).....	47
Vein pumps.....	71
Water testing equipment.....	68

FILTER CARTRIDGES

MELT BLOWN FILTERS



CODE	PRODUCT	QTY	UNIT
MELT BLOWN			
APP10-(micron size)	10" Melt blown filter 0.5-100 micron (EG APP10-5)	Box	50
		Single	
APP20-(micron size)	20" Melt blown filter 1-100 micron (EG APP20-20)	Box	25
		Single	
APP30-(micron size)	30" Melt blown filter 1-100 micron (EG APP30-5)	Box	25
		Single	
APP40-(micron size)	40" Melt blown filter 1-100 micron (EG APP40-5)	Box	25
		Single	
BIG BLUE MELT BLOWN			
APPBB10-(micron size)	10" BB melt blown filter 1-100 micron (EG APPBB10-5)	Box	18
		Single	
APPBB20-(micron size)	20" BB melt blown filter (EG APPBB20-5)	Box	9
		Single	

FILTER CARTRIDGES

STRING WOUND FILTERS



CODE	PRODUCT	QTY	UNIT
STRING WOUND FILTER			
ASW10-(micron size)	10" String wound filter 1-100 micron (EG ASW10-1)	Box	50
		Single	
ASW20-(micron size)	20" String wound filter 1-100 micron (EG ASW20-5)	Box	25
		Single	
ASW30-(micron size)	30" String wound filter 1-100 micron (EG ASW30-5)	Box	25
		Single	
BB STRING WOUND			
ASWBB10-(micron size)	10" BB string wound (EG ASWBB10-1)	Box	18
		Single	
ASWBB20-(micron size)	20" BB string wound (EG ASWBB20-1)	Box	9
		Single	

FILTER CARTRIDGES

PLEATED FILTERS



CODE	PRODUCT	QTY	UNIT
PLEATED FILTERS			
AHF10-(micron size)	10" Pleated filter 1-50 micron (EG AHF10-1)	Box	50
		Single	
AHF20-(micron size)	20" Pleated filter 1-50 micron (EG AHF20-50)	Box	25
		Single	
BIG BLUE PLEATED			
AHFBB10-(micron size)	10" BB pleated filter 1-50 micron (EG AHFBB10-10)	Box	18
		Single	
AHFBB20-(micron size)	20" BB pleated filter 1-50 micron (EG AHFBB20-20)	Box	9
		Single	

FILTER CARTRIDGES

SPECIALITY ABSOLUTE FILTERS



CODE	PRODUCT	UNIT
DOUBLE OPEN ENDED		
DLMN6-20-10-IIPP	10" 0.2 micron DOE pleated nylon 7 filter	PCS
DLMN6-45-10-IIPP	10" 0.45 micron DOE pleated nylon 7 filter	PCS
DLMN6-45-20-IIPP	20" 0.45 micron DOE pleated nylon 7 filter	PCS
CODE 7 NYLON		
DLMN6-20-10-VIE	10" 0.2 micron code 7 nylon 6-226/fin filter	PCS
DLMN6-20-30-VIE	30" 0.2 micron code 7 nylon 6-226/fin filter	PCS
DLMN6-22-30-VIE	30" 0.22 micron code 7 nylon 6-226/fin filter	PCS
DLMN6-45-30-VIE	30" 0.45 micron code 7 nylon 6-226/fin filter	PCS
DLMN6-65-30-VIE	30" 0.65 micron code 7 nylon 6-226/fin filter	PCS
DLMPP-1-30-QS	30" 1 micron code 7 nylon 6-226/fin filter	PCS
DLMPP-5-30-QS	30" 5 micron code 7 nylon 6-226/fin filter	PCS
DLMPP-10-30-QS	30" 10 micron code 7 nylon 6-226/fin filter	PCS

MANY OTHER SPECIALITY / ABSOLUTE FILTERS ARE AVAILABLE FROM WCSA

FILTER CARTRIDGES

WASHABLE MESH FILTERS



CODE	PRODUCT	QTY	UNIT
WASHABLE MESH FILTERS			
MN10-100	10" Washable nylon 100 mesh filter	Single	PCS

FILTER CARTRIDGES

GRANULAR ACTIVATED CARBON



CODE	PRODUCT	UNIT
GRANULAR ACTIVATED CARBON		
GAC10	Standard 10" granular activated coconut shell carbon	PCS
CRGAC10-D	10" sediment and GAC cartridge	PCS
GAC20	Standard 20" granular activated coconut shell carbon	PCS
GACBB10	10" BB granular activated carbon	PCS
GACBB20	20" BB granular activated carbon	PCS

FILTER CARTRIDGES

CARBON BLOCK FILTERS



CODE	PRODUCT	UNIT
CARBON BLOCK FILTERS		
CB10-5	10" Carbon block	PCS
CB20-5	20" Carbon block	PCS
CB30-5	30" Carbon bock	PCS
3_1227	10" Silver impregnated carbon block	PCS
3_1228	20" Silver impregnated carbon block	PCS
CBBB10	10" BB carbon block	PCS
CBBB20	20" BB carbon block	PCS

FILTER CARTRIDGES

CERAMIC FILTERS



CODE	PRODUCT	UNIT
50250F	DOE ceramic filter for 10" housing 50mm diameter	PCS
B-65250F	DOE carbon impregnated ceramic filter 10" 65mm diameter	PCS

POST RO CARBON FILTERS



CODE	PRODUCT	UNIT
PCC	Post carbon for RO units	PCS
NPCC	Nanosilver post carbon cartridge	PCS

POST RO MINERALISING FILTERS



CODE	PRODUCT	UNIT
FTA10-6	Re-mineralising filter	PCS

FILTER CARTRIDGES

POST RO BIO MAGNET FILTERS



CODE	PRODUCT	UNIT
FTA5-2	Bio magnet post filter	PCS

POST RO DEMIN FILTERS



CODE	PRODUCT	UNIT
FTQ10-8-1	Inline demin cartridge	PCS

INLINE SCALE PREVENTION FILTERS



CODE	PRODUCT	UNIT
FTA10-13	10" In-line anti-scale cartridge	PCS

FILTER CARTRIDGES

INLINE FILTER CARTRIDGES



CODE	PRODUCT	UNIT
FTI12-1	K type 5 micron inline filter cartridge	PCS



CODE	PRODUCT	UNIT
FTI12-2	K type GAC inline filter cartridge	PCS



CODE	PRODUCT	UNIT
FTI12-3	K type 1 micron inline filter cartridge	PCS

FILTER CARTRIDGES

REFILLABLE FILTER CARTRIDGES



CODE	PRODUCT	UNIT
REFILLABLE FILTER CARTRIDGES		
RFC10C	Post membrane refillable cartridge	PCS
RFC10W	Refillable 10" cartridge	PCS
RFC20W	Refillable 20" cartridge	PCS
BBRFC10W	Big blue refillable 10" cartridge	PCS
BBRFC20W	Big blue refillable 20" cartridge	PCS

FILTER CARTRIDGES

DEMINERALISING CARTRIDGES



CODE	PRODUCT	UNIT
DEMIN FILTER CARTRIDGES		
DMN10"	10" Slimline demin filter cartridge	PCS
DMN20"	20" Slimline demin filter cartridge	PCS
DMNBB10"	10" BB demin filter cartridge	PCS
DMNBB20"	20" BB demin filter cartridge	PCS

FILTER CARTRIDGES

SCALE PREVENTION FILTER CARTRIDGES



CODE	PRODUCT	UNIT
SCALE NET CARTRIDGES		
SNC10"	10" Slimline scale net filter cartridge	PCS
SNC20"	20" Slimline scale net filter cartridge	PCS
SNCBB10"	10" BB scale net filter cartridge	PCS
SNCBB20"	20" BB scale net filter cartridge	PCS
SILIPHOS MIX FILTER CARTRIDGES		
SPM10"	10" Slimline scale prevention filter cartridge	PCS
SPM20"	20" Slimline scale prevention filter cartridge	PCS
SPMBB10"	10" BB scale prevention filter cartridge	PCS
SPMBB20"	20" BB scale prevention filter cartridge	PCS

FILTER CARTRIDGES

GAC / KDF FILTERS



CODE	PRODUCT	UNIT
GAC / KDF FILTERS		
GAC/KDF 10"	10" Slimline GAC/KDF filter cartridge	PCS
GAC/KDF 20"	20" Slimline GAC/KDF filter cartridge	PCS
GAC/KDF 10" BB	10" BB GAC/KDF filter cartridge	PCS
GAC/KDF 20" BB	20" BB GAC/KDF filter cartridge	PCS

FILTER CARTRIDGES

COLOUR REMOVAL FILTER CARTRIDGES



CODE	PRODUCT	UNIT
COLOUR REMOVAL RESIN FILTER CARTRIDGES		
TAN10"	10" Slimline tanin removal filter cartridge	PCS
TAN20"	20" Slimline tanin removal filter cartridge	PCS
TANBB10"	10" BB tanin removal filter cartridge	PCS
TANBB20"	20" BB tanin removal filter cartridge	PCS

FILTER CARTRIDGES

pH CORRECTION FILTER CARTRIDGES



CODE	PRODUCT	UNIT
PH CORRECTION FILTER CARTRIDGES		
RMN10"	10" Slimline remineralising & pH adjustment filter cartridge	PCS
RMN20"	20" Slimline remineralising & pH adjustment filter cartridge	PCS
RMNBB10"	10" BB remineralising & pH adjustment filter cartridge	PCS
RMNBB20"	20" BB remineralising & pH adjustment filter cartridge	PCS

FILTER CARTRIDGES

ULTRA FILTERS



CODE	PRODUCT	UNIT
ULTRA FILTERS		
UF-180P	Ultra filter to fit 10" housing	PCS
UF-350P	Ultra filter to fit 20" housing	PCS
UF-120RK-T11QC	Ultra filter with quick connect fitting	PCS

FILTER HOUSINGS

10" SLIM LINE FILTER HOUSINGS



CODE	PRODUCT	UNIT
10" HOUSINGS		
FHC1014D	10" Clear 1/4" port DBL O-ring	PCS
FHW1014D	10" White 1/4" port DBL O-ring	PCS
FHB1012D	10" Blue 1/2" port DBL O-ring	PCS
FHB1034D	10" Blue 3/4" port DBL O-ring	PCS
FHC1034D	10" Clear 3/4" port DBL O-ring	PCS
FFH10"	Spare O-ring for 10" housings	PCS

FILTER HOUSINGS

20" SLIM LINE FILTER HOUSINGS



CODE	PRODUCT	UNIT
20" HOUSINGS		
FHW2034D	20" White 3/4" port DBL O-ring	PCS
FHB2034D	20" Blue 3/4 port DBL O-ring	PCS
FHC2034S	20" Clear 3/4" port SNG O-ring	PCS
FFH20"	Spare O-ring for 20" housings	PCS
KFHB2034S	Kemflo 20" blue housing spare for industrial Cero RO unit	PCS

FILTER HOUSINGS

BIG BLUE FILTER HOUSINGS



CODE	PRODUCT	UNIT
BIG BLUE HOUSINGS		
BBB101D	10" Big blue 1" port DBL O-ring	PCS
BBB101D-1	10" Big blue 1 1/2 port DBL O-ring	PCS
BBB201D	20" Big blue 1" port DBL O-ring	PCS
BBB201D-1	20" Big blue 1 1/2 port DBL O-ring	PCS
BBB201D-S	20" Big blue 1" port single O-ring	PCS
BBFH20"	Spare O-ring for Big Blue housings	PCS

FILTER HOUSING BRACKETS & CLIPS

EPOXY COATED FILTER HOUSING BRACKETS & PLASTIC HOUSING CLIPS



CODE	PRODUCT	UNIT
EPOXY COATED FILTER HOUSING BRACKETS & PLASTIC HOUSING CLIPS		
AC10-03	Single epoxy coated for slim line	PCS
AC10-05	Double epoxy coated for 20" clear housing	PCS
AC10-05A10	Double epoxy coated for slim line	PCS
AC10-09	Triple epoxy coated for slim line	PCS
AC10-02	Single epoxy coated for BB	PCS
AC10-14	Floor standing for 2x BB	PCS
AC10-15	Floor standing for 3x BB	PCS
AC9-05	1812 membrane clip	PCS
AC9-06	300 gal membrane clip	PCS
AC9-02	1812 membrane - post carbon double clip	PCS

FILTER HOUSINGS

STAINLESS STEEL FILTER HOUSINGS



CODE	PRODUCT	UNIT
STAINLESS STEEL HOUSINGS		
BN710	10", 304SS, 1" Ports	PCS
BN720	20", 304SS, 1" Ports	PCS
BB720	20", BB 304SS housing 1" Ports	PCS
BN730	30", 304SS, 1" Ports	PCS
BN730-7	Housing for code 7, 30" 304SS	PCS
DOMESTIC RO MEMBRANE HOUSINGS		
FTH M-2	1812 Membrane housing	PCS
FTH M-1	300 GPD membrane housing to fit sole water membrane	PCS
FTH M-3	300 GPD membrane housing to fit fluxtek water membrane	PCS
FTH M-4	300 GPD membrane housing to fit Puricom membrane	PCS

BAG FILTER HOUSINGS

BAG FILTERS FOR SS & PVC BAG FILTER HOUSINGS



CODE	PRODUCT	UNIT
STAINLESS STEEL & PVC BAG FILTER HOUSINGS		
BFL-1-304SS	100 PSI SNG length 304SS	PCS
BFH-1-304SS	150 PSI SNG length 304SS	PCS
BFL-2-304SS	100 PSI DBL length 304SS	PCS
BFH-2-304SS	150 PSI DBL length 304SS	PCS
HXP-BF-1-1	A Single PVC bag filter housing	PCS
HXP-BF-1-2	100 PSI DBL length PVC	PCS
ACCESSORIES FOR STAINLESS STEEL & PVC BAG FILTER HOUSINGS		
SPANNER	Spanner for HXP-BF-1-2	PCS
LID	Lid for HXP-BF-1-2	PCS
NUT	Nut for HXP-BF-1-2	PCS
OHXP-1	Silicon o-ring for PVC bag filter housing (thick)	PCS
OHXP-2	Silicon o-ring for PVC bag filter housing (thin)	PCS
OHXP-3	Silicon o-ring for PVC bag filter housing (flat)	PCS
BFH-LID	BFH top lid SS304	PCS
BFL-CLAMP	Clamp for BFL	PCS
BFL/BFH BOLTS	Lifting bolts for BFL/BFH	PCS

BAG FILTER HOUSINGS

BAG FILTERS FOR SS & PVC BAG FILTER HOUSINGS



CODE	PRODUCT	UNIT
FILTER BAGS FOR HOUSINGS		
PP-1-P01E	PP 1 micron # 1 filter bag with plastic ring	PCS
PP-5-P01E	PP 5 micron # 1 filter bag with plastic ring	PCS
PP-10-P01E	PP 10 micron # 1 filter bag with plastic ring	PCS
PP-20-P01E	PP 20 micron # 1 filter bag with plastic ring	PCS
PP-100-P01E	PP 100 micron # 1 filter bag with plastic ring	PCS
PP-1-P02E	PP 1 micron # 2 filter bag with plastic ring	PCS
PP-1-P02S	PP 1 micron # 2 filter bag with steel ring	PCS
PP-5-P02E	PP 5 micron # 2 filter bag with plastic ring	PCS
PP-5-P02S	PP 5 micron # 2 filter bag with steel ring	PCS
PP-10-P02E	PP 10 micron # 2 filter bag with plastic ring	PCS
PP-10-P02S	PP 10 micron # 2 filter bag with steel ring	PCS
PP-20-P02E	PP 20 micron # 2 filter bag with plastic ring	PCS
PP-20-P02S	PP 20 micron # 2 filter bag with steel ring	PCS
PP-50-P02E	PP 50 micron # 2 filter bag with plastic ring	PCS
PP-50-P02S	PP 50 micron # 2 filter bag with steel ring	PCS
PP-100-P02E	PP 100 micron # 2 filter bag with plastic ring	PCS
PP-100-P02S	PP 100 micron # 2 filter bag with steel ring	PCS
PP SCR20-PO20R	SCR-100 20 micron # 2 oil filter bag with plastic ring	PCS

MULTI CARTRIDGE FILTER HOUSINGS

STAINLESS STEEL MULTI CARTRIDGE FILTER HOUSINGS



CODE	PRODUCT	UNIT
STAINLESS STEEL MULTI CARTRIDGE FILTER HOUSINGS		
BN1-W7L3	100 PSI Multi cartridge SS304 7 element 30" filter	PCS
3R30	1" Tri-clover multi cartridge SS304 3 element code 7 filters	PCS
7R30	2" Dine flange multi cartridge SS304 7 element code 7 filters	PCS

SCREEN FILTERS

SCREEN FILTERS



CODE	PRODUCT	UNIT
SCREEN FILTERS		
Kosead-005	Brass body SS screen manual backwash, 3/4" 2800LPH 20 bar rated	PCS
Kosead-006	SS Body SS screen manual backwash, 3/4" 2800LPH 20 bar rated	PCS

HIGH FLOW FILTER SYSTEMS

HOUSING & FILTERS



CODE	PRODUCT	UNIT
HOUSING		
ET80-150S-20"	20" end in/side out FRP housing	PCS
ET80-150S-40"	40" end in/side out FRP housing	PCS
ET80-150S-60"	60" end in/side out FRP housing	PCS
FILTERS		
HFP20"	1,5 & 20 micron for 20" FRP housing	PCS
HFP40"	5 & 20 micron for 40" FRP housing	PCS
HFP60"	5 & 20 micron for 60" FRP housing	PCS

DOMESTIC REVERSE OSMOSIS UNITS

UNDERCOUNTER REVERSE OSMOSIS UNITS



CODE	PRODUCT	UNIT
DOMESTIC RO UNITS		
CE-8	5 Stage RO unit without pump	PCS
CE-8P	5 Stage RO unit with pump	PCS
CE-5	5 Stage direct flow RO system 300 GPD without pump	PCS
CE-5P	5 Stage direct flow RO system 300 GPD with pump	PCS

DOMESTIC PURIFIERS

UNDERCOUNTER AND COUNTER TOP PURIFIERS



CODE	PRODUCT	UNIT
DOMESTIC UNITS		
CT-01G	Counter top unit with GAC filter	PCS
CT-01K	Counter top unit with GAC/KFD filter	PCS
CT-01C	Counter top unit with ceramic/carbon	PCS
SUC-01G	Single under counter unit with GAC filter	PCS
SUC-01K	Single under counter unit with GAC/KDF filter	PCS
DUC-02G	Double under counter unit with GAC filter	PCS
DUC-02K	Double under counter unit with GAC/KDF filter	PCS

DOMESTIC PURIFIERS

HIGH FLOW UNDER COUNTER PURIFIERS



CODE	PRODUCT	UNIT
PURIFIERS		
AC/KDF-520A	Complete inline purification unit with GAC/KDF. Complete with all fittings and piping. Suitable for whole kitchen use or high flow under counter application.	PCS

ULTRA FILTERS

INDUSTRIAL MEMBRANES, WHOLE HOUSE UF, UF HOUSINGS ETC.



CODE	PRODUCT	UNIT
ULTRA FILTERS		
UF-DUC-02	Complete double under counter unit with ultra filter	PCS
BBUF4040B	Complete 480lts/hr SS UF system on frame with 3 BB housings	PCS
839T	Auto Flushing timer	PCS
AQ4040	Inside out UF module for standard stainless steel 4040 housing	PCS
DOW SFP 2660	Standard 33 m3 PVDF ultra filter	PCS
DOW SFP 2860	Standard 52 m2 PVDF ultra filter	PCS
DOW SFP 2880	Large 77 m2 PVDF ultra filter	PCS

Components South Africa

BASIC INDUSTRIAL REVERSE OSMOSIS UNITS

BASIC INDUSTRIAL RO UNITS



CODE	PRODUCT	UNIT
BASIC INDUSTRIAL RO UNITS		
BLPRO-1500-V2	Basic Compact industrial RO unit 250lts/hr production with 1 x TW30-4040 Filmtec membrane	PCS
BLPRO-3000-V2	Basic Compact industrial RO unit 500lts/hr production with 2 x TW30-4040 Filmtec membranes	PCS

INDUSTRIAL REVERSE OSMOSIS UNITS

REVERSE OSMOSIS UNITS



CODE	PRODUCT	UNIT
INDUSTRIAL RO UNITS		
LPRO-B16-1500	Complete industrial RO unit 250lts/hr production with 1 x 4040 Filmtec membrane	PCS
LPRO-B16-3000	Complete industrial RO unit 500lts/hr production with 2 x 4040 Filmtec membranes	PCS
LPRO-B16-6000	Complete industrial RO unit 1000lts/hr production with 4 x 4040 Filmtec membranes	PCS
LPRO-B412-9000	Complete industrial RO unit 1500lts/hr production with 6 x 4040 Filmtec membranes	PCS
LPRO-B412-12000	Complete industrial RO unit 2000lts/hr production with 8 x 4040 Filmtec membranes	PCS
LPRO-B412-18000	Complete industrial RO unit 3000lts/hr production with 12 x 4040 Filmtec membranes	PCS

ADVERTISED FLOW RATES ARE MAXIMUMS AND MAY VARY SUBJECT TO FEED WATER CONDITIONS

DOMESTIC ACCESSORIES AND SPARES

FEED CONNECTIONS, VALVES, DIVERTERS AND PRVS



CODE	PRODUCT	UNIT
FEED CONNECTIONS		
F15	3/8" x 1/4" Eezi feed	PCS
F21	1/2" x 1/4" Eezi feed	PCS
F22	3/4" x 1/4" Eezi feed	PCS
F22-1	3/4" x 1/4" Eezi feed without hole	PCS
VALVES		
F06	1/4" x 1/4" Ball valve	PCS
F04	1/4" x 3/8" Ball valve	PCS
F50	1/4" long ball valve	PCS
CLAMPS		
ACI-M05	Saddle clamp	PCS
ACI-M06	G type saddle clamp	PCS
DIVERTERS		
F56	1/8" Single head diverter	PCS
F60	1/4" x 3/8" single head diverter	PCS
F61	1/4" pull style single head diverter	PCS
F62	1/4" single head diverter	PCS
L JOINT FITTINGS		
F28	3/8" L joint	PCS
F30	3/8" quick adaptor L joint	PCS
PRESSURE REDUCING VALVES		
F47	1/4" Pressure reducing valve SS	PCS
F48	1/2" Pressure reducing valve SS	PCS
AC-FR01	1/4" Pressure reducing valve plastic	PCS
AC-FR03	3/8" Pressure reducing valve plastic	PCS

DOMESTIC ACCESSORIES AND SPARES

FAUCETS FOR PURIFIERS AND RO UNITS



CODE	PRODUCT	UNIT
DOMESTIC ACCESSORIES		
D01	Standard black push lever brushed nickel	PCS
D02-1	Classic chromed	PCS
D27-1	Elegant quarter turn chromed	PCS
D44	Square hook pipe faucet for counter top unit	PCS
D45	Round hook pipe faucet for counter top unit	PCS

DOMESTIC ACCESSORIES AND SPARES

AUTO SHUT OFF VALVES AND PRESSURE SWITCHES



CODE	PRODUCT	UNIT
PRESSURE SWITCH		
CE-LP	Low pressure switch Puricom for CE-8/CE-5/CER8-3	PCS
CE8-HP	High pressure switch Puricom for CE-8	PCS
CE5-HP	High pressure switch Puricom for 1/4 F thread 20-40PSI,CE-5	PCS
FLL901	Low pressure switch for Fluxtec FE-125/FE-300/FE-600	PCS
FLH03	High pressure switch for Fluxtec FE-125/FE-300/FE-600	PCS
FLL902	Low pressure switch for Fluxtec FE-600GPD/FE-800GPD	PCS
FLH04	High pressure switch for Fluxtec FE-600GPD/FE-800GPD	PCS
AUTO SHUT OFF VALVE		
FVIN0404	Auto shut off valve 1/4"	PCS
FLV01	Auto shut off valve 3/8" for FE-300	PCS

DOMESTIC ACCESSORIES AND SPARES

LEAK DETECTORS AND AUTO SHUT OFF VALVES



CODE	PRODUCT	UNIT
LEAK DETECTOR		
WAL01-1/4"	Leak detector with collection tray and auto shutt off	PCS
WAL-SPONGE	Replacement sponge for leak detector tray	PCS
AUDIOLEAK	Audio alarm leak detector	PCS

DOMESTIC ACCESSORIES AND SPARES

SOLENOIDS, CONTROLLERS AND PUMP SPARES



CODE	PRODUCT	UNIT
SOLENOID VALVE		
AC4-03	Solenoid valve for R0-600	PCS
AC4-02	Solenoid valve for R0-116	PCS
FL5V01	Replacement solenoid valve 5 mm for FE-600	PCS
FSV1/4	Solenoid valve 220V 1/4" for FE600 & FE800	PCS
FSV3/8	Solenoid valve 220V 3/8" for FE600 & FE800	PCS
CE-SV	Solenoid valve 1/4" for CE-8 and CE-5	PCS
LED COMPUTER		
FAC3-01	LED computer box for R0-600	PCS
DIAPHRAM		
FDIA-01	Diaphragm for R0-102 pressure pump	PCS

DOMESTIC ACCESSORIES AND SPARES

HOUSING SPANNERS



CODE	PRODUCT	UNIT
SPANNERS		
AC9-08	Double spanner for 1812 membrane housing & filter housing	PCS
AC9-09 10	Standard spanner	PCS
AC9-09 20S	Spanner for 20" clear housings	PCS
FWR5-1	5 in 1 housing spanner	PCS
AC9-09 20	Big blue spanner	PCS

DOMESTIC ACCESSORIES AND SPARES

FLOW RESTRICTORS



CODE	PRODUCT	UNIT
FLOW RESTRICTOR		
CE-FR300	Flow restrictor Puricom 300cc with manual flush for CE-8	PCS
CE-FR1600	Flow restrictor Puricom 2000cc with manual flush for CE-5	PCS
AC7-05	Flow restrictor with flush 400cc	PCS
AC7-02	Flow restrictor 300cc	PCS
AC7-04	Flow restrictor 800cc	PCS

DOMESTIC ACCESSORIES AND SPARES

STORAGE TANKS FOR RO UNITS



CODE	PRODUCT	UNIT
STORAGE TANKS FOR RO		
ACT-M04	3.2 Gal RO storage tank	PCS
ACT-M06	20 Gal RO storage tank	PCS
FTCT-01	Tank connector tube 1"- 3/8" for ACT-M06	PCS

Water C

ULTRA VIOLET STERILISERS

STAINLESS STEEL & CORROSION RESISTANT UV STERILISERS



CODE	PRODUCT	UNIT
STAINLESS STEEL UV STERILISERS		
HC-120	450lts/hr, 14 Watt, 1/4" Female	PCS
HC-480	1800lts/hr, 29 Watt, 1/2" Male without control box	PCS
HC-480-B	1800lts/hr, 29 Watt, 1/2" Male with control box	PCS
HC-720	2720lts/hr, 40 Watt, 3/4" Male	PCS
EB-24	5450lts/hr, 85 Watt, 1 1/2" Male	PCS
EB-45	10200lts/hr, 85 Watt x2, 2" Male	PCS
EB-150	15000lts/hr. 85 Watt x3, 2 1/2"	PCS
SPARE CONTROL BOXES		
CBOX 480/720	Spare control box for HC480 and HC720 UV	PCS
CBOX EB24	Spare control box for EB24 UV	PCS
CBOX EB45	Spare control box for EB45 UV	PCS
CBOX EB150	Spare control box for EB150	PCS

ULTRA VOILET STERILISERS

REPLACEMENT LAMPS, QUARTZ SLEEVES AND BALLASTS



CODE	PRODUCT	UNIT
SPARE LAMPS		
T514	14 Watt lamp HC-120	PCS
T529	29 Watt lamp for HC-480	PCS
T540	40 Watt lamp for HC-720	PCS
T585	85 Watt lamp for EB24 / EB-45 / EB-150	PCS
SPARE QUARTZ SLEEVES		
330QT	Quarts for HC-120	PCS
680QT	Quarts for HC-480	PCS
910QT	Quarts for HC-720	PCS
910QS	Quarts for EB-24 / EB-45 / EB-150	PCS
SPARE BALLASTS		
UV-3	Electronic ballast for HC-120	PCS
UV-6	Electronic ballast for HC-480 and HC-720	PCS
UV6-C	Electronic ballast for HC-480 and HC-720 control box	PCS
UV-8	Electronic ballast for EB24/EB45	PCS
D24.5 O RING	Viton O ring for UV	PCS

ULTRA VIOLET STERILISERS

COMPLETE FILTRATION & UV UNITS



CODE	PRODUCT	UNIT
COMPLETE FILTRATION UV SYSTEMS		
UV10-450/2	2x10" s/line 450lts/hr filtration & UV unit mounted on bracket	PCS
UV10-450/3	3x10" s/line 450lts/hr filtration & UV unit mounted on bracket	PCS
UV20-1800/2	2x20" s/line 1800lts/hr filtration & UV unit mounted on bracket	PCS
UV20-1800/2-B	2x20" s/line 1800lts/hr filtration & UV unit with control box mounted on bracket	PCS
UV20-1800/3	3x20" s/line 1800lts/hr filtration & UV unit mounted on bracket	PCS
UV20-1800/3-B	3x20" s/line 1800lts/hr filtration & UV unit with control box mounted on bracket	PCS
BBUV20-2720/2	2xBB20" 2720lts/hr filtration & UV unit mounted on frame	PCS
BBUV20-2720/3	3xBB20" 2720lts/hr filtration & UV unit mounted on frame	PCS
BBUV20-5450/2	2xBB20" 5450lts/hr filtration & UV unit mounted on frame	PCS
BBUV20-5450/3	3xBB20" 5450lts/hr filtration & UV unit mounted on frame	PCS

COMPLETE OZONE UNITS

STAND ALONE OZONE GENERATORS & KITS



CODE	PRODUCT	UNIT
OZONE UNITS		
E3G	3G ozone unit including air dryer filter	PCS
E5G	5 gram ozone generator including air dryer filter	PCS
E10G	10G ozone unit including air dryer filter	PCS
O3AD	Replaceable air dryer filter	PCS
E3GK	3G kit consisting of Ozone, pump CDX70/05 & Venturi	PCS
E5GK	5G Kit consisting ozone, pump CDX70/05 & venturi	PCS
E10GK	10G kit consisting of Ozone, pump CDX70/05 & Venturi	PCS
OZONE SPARES		
ECOPUMP-3G/5G	Air pump for 3G/5G ozone units	PCS
ECOPUMP-10G	Air pump for 10G ozone units	PCS
ECO-VALVE	Plastic check valve	PCS
ECO-PIPE	Specialised ozone clear piping	PCS

COMPLETE FILTRATION UNITS

COMPLETE FILTRATION UNITS



CODE	PRODUCT	UNIT
COMPLETE FILTRATION UNITS		
DTFS13X54	Complete automated filtration skid 13X54 vessels, excludes pump but pump ready	PCS
DTFS18X65	Complete automated filtration skid 18X65 vessels, including SS pump	PCS

FIBREGLASS FILTER VESSELS & ACCESSORIES

FIBREGLASS VESSELS



CODE	PRODUCT	UNIT
FIBRE GLASS VESSELS		
8x44	Fibre glass vessel with 2.5" inlet	PCS
10x35	Fibre glass vessel with 2.5" inlet	PCS
10x54	Fibre glass vessel with 2.5" inlet	PCS
12x52	Fibre glass vessel with 2.5" inlet	PCS
13x54	Fibre glass vessel with 2.5" inlet	PCS
14x65	Fibre glass vessel with 2.5" inlet	PCS
14x65B	Fibre glass vessel with 4" inlet & outlet incl. 4" thread plug	PCS
16x65	Fibre glass vessel with 4" inlet & outlet incl. 4" thread plug	PCS
18x65	Fibre glass vessel with 4" inlet & outlet incl. 4" thread plug	PCS
24x72	Fibre glass vessel with 4" inlet & outlet incl. 4" thread plug	PCS
30x72	Fibre glass vessel with 6" flanged inlet and outlet incl. distributors	PCS
36x72	Fibre glass vessel with 6" flanged inlet & outlet incl. distributors	PCS
48x72	Fibre glass vessel with 6" flanged inlet & outlet incl. distributors	PCS

FIBREGLASS FILTER VESSELS & ACCESSORIES

SAND FILTERS



CODE	PRODUCT	UNIT
SAND FILTERS		
V700	5 Bag FRP sand filter 4 bar with multiport valve	PCS
V700B	5 Bag FRP sand filter 4 bar without multiport valve	PCS

FIBREGLASS FILTER VESSELS & ACCESSORIES

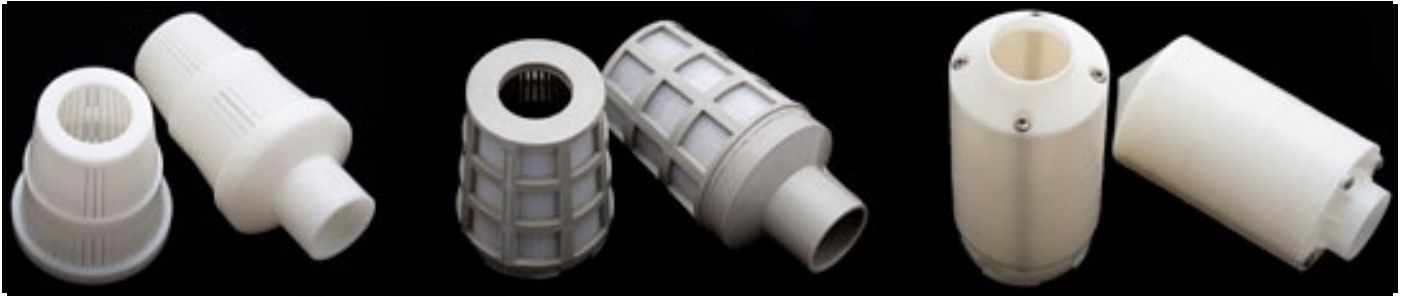
DISTRIBUTORS, STRAINERS & RISER PIPES



CODE	PRODUCT	UNIT
ACCESSORIES FOR FIBRE GLASS VESSELS		
JD203	Top distributor 3/4" glue connection	PCS
JD204	Bottom distributor 3/4" glue connection	PCS
JD205	Top distributor 1" glue connection	PCS
JD206	Bottom distributor 1" glue connection	PCS
JD209	Top distributor 3/4" fleck type	PCS
JD210	Bottom distributor 3/4" fleck type	PCS
JD211	Top distributor 3/4"	PCS
JD212	Bottom distributor 3/4"	PCS
JD222	Top distributor 3/4" with fine net	PCS
JD223	Bottom distributor 3/4" with fine net	PCS
JD230	High flow top distributor 3/4"	PCS
JD231	High flow bottom distributor 3/4"	PCS
CONTINUED ON NEXT PAGE		

FIBREGLASS FILTER VESSELS & ACCESSORIES

DISTRIBUTORS, STRAINERS & RISER PIPES



CODE	PRODUCT	UNIT
ACCESSORIES FOR FIBRE GLASS VESSELS		
JD232	High flow top distributor 1"	PCS
JD233	High flow bottom distributor 1"	PCS
JD221	4" Top distributor	PCS
JD218	4" Bottom distributor	PCS
JD502	4" Threaded plug	PCS
JD504	4"-2.5" reducer	PCS
02030016	35" Canature riser pipe complete with bottom strainer	PCS
02030026	54" Canature riser pipe complete with bottom strainer	PCS
02030027	65" Canature riser pipe complete with bottom strainer	PCS
CONTINUED ON NEXT PAGE		

FIBREGLASS FILTER VESSELS & ACCESSORIES

DISTRIBUTORS, STRAINERS & RISER PIPES



CODE	PRODUCT	UNIT
ACCESSORIES FOR FIBRE GLASS VESSELS		
RT101	27mm Riser pipe to fit JD107B & 2.5" auto valves	PCS
RT102	34mm Riser pipe to fit JD107A valve	PCS
H5671-B	Complete distributor assembly tank connection 4"/63 mm glue connection	PCS
HD6700B-1	Bottom lateral distributor for 4" BSp	PCS
H2804-C	Spare strainer for H5671-B	PCS
H173	Complete distributor assembly 6" flange 3" BSP top	PCS
H2815	Spare distributor for H173	PCS
HD5672-1	8" Lateral distributor assembly 6" flange 3" BSP bottom	PCS
HD5672	Spare lateral for HD5672-1	PCS
10926-03	Bottom mount 8 lateral assembly for 30x72 vessel	PCS
10926-04	Bottom mount 8 lateral assembly for 36x72 vessel	PCS
10927-03	Bottom mount 16 lateral assembly for 48x72 vessel	PCS
CONTINUED ON NEXT PAGE		

FIBREGLASS FILTER VESSELS & ACCESSORIES

DISTRIBUTORS, STRAINERS & RISER PIPES



CODE	PRODUCT	UNIT
ACCESSORIES FOR FIBRE GLASS VESSELS		
10337	Complete flanged kit 6" for 30/36/48x72 vessel	PCS
10928	Top mount assembly for 30/36/48x72 vessel	PCS
1035 JACKET	Round plastic jacket for 10x35 vessel	PCS
1054 JACKET	Round plastic jacket for 10x54 vessel	PCS
INLET / OUTLET FILTER HEAD		
JD101	Circular inlet 1" riser 3/4	PCS
JD102	Circular inlet 1" riser 1"	PCS
JD103	Non circular inlet 1" riser 3/4	PCS
JD104	Circular inlet 3/4" riser 3/4	PCS
JD105	4" Inlet/outlet filter head	PCS

FILTRATION & SOFTENER VALVES

AUTOMATIC & MANUAL FILTRATION & SOFTENER VALVES



CODE	PRODUCT	UNIT
FILTRATION & SOFTENER VALVES		
F67B1	Runxin 2.5" automatic filtration valve	PCS
T-F67B1	Transformer for F67B1 valve	PCS
F63B3	Runxin 2.5" softener valve	PCS
T-F63B3	Transformer for F63B3 valve	PCS
F73A	Runxin automatic duplex valve 3.5m ³ /h	PCS
F75A1	Runxin 4" automatic filtration valve	PCS
T-F75A1	Transformer for F75A1 valve	PCS
F74A1	Runxin 4" Softener valve	PCS
BNT-111	Manual filter valve 1" inlet/outlet	PCS
BNT-1650F	Meter softener valve 1" plastic bypass	PCS
BNT-5650F	Meter softener valve 1" plastic bypass	PCS
BNT-650T	Softener timer valve 1" inlet/outlet adaptor (with pins like Fleck)	PCS
T-BNT-650T	Transformer for BNT-650T valve	PCS
BNT-950F	Meter softener 2.5" base 1.5" inlet/outlet	PCS
F64A1	Manual softener valve with metal handle	PCS
F56A1	Runxin 2.5" manual backwash head	PCS
F56D2	Runxin 4" manual backwash head with plastic handle	PCS
JD107A	2.5" Manual back wash head 1" riser includes top & bottom strainer	PCS
JD107B	2.5" Manual back wash head 3/4" riser includes top & bottom strainers	PCS

BRINE TANKS & DOSING TANKS

BRINE TANKS FOR SOFTENERS & CHEMICAL DOSING TANKS



CODE	PRODUCT	UNIT
BRINE & DOSING TANKS		
MC100LW	100ltr Clear dosing tank	PCS
BTR-100	100ltr Brine tank with well, grid & brine valve	PCS
BTR-200	200ltr Brine tank with well, grid & brine valve	PCS
BV434	Brine valve	PCS
BV444	44" Brine valve	PCS

STEEL VESSELS

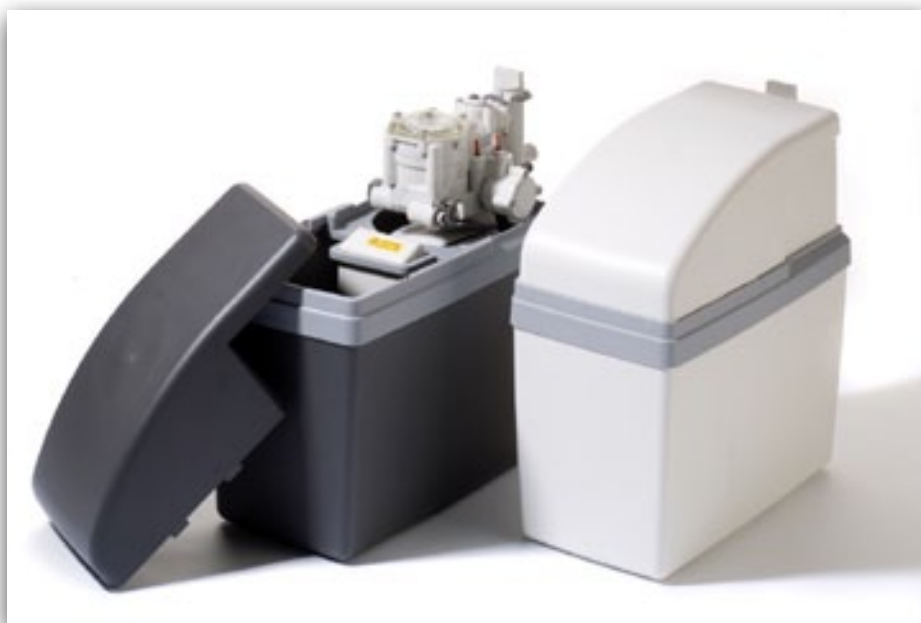
STEEL VESSELS



CODE	PRODUCT	UNIT
STEEL VESSELS		
CONN 12	20 X 33" Steel vessel epoxy coated	PCS
CONN 12 S 500	20 X 53" Steel vessel epoxy coated	PCS
CONN 12 S 100	20 X 73" Steel vessel epoxy coated	PCS
CONN 20	27 X 37" Steel vessel epoxy coated	PCS
CONN 20 S 500	27 X 58" Steel vessel epoxy coated	PCS
CONN 20 S 1000	27 X 77" Steel vessel epoxy coated	PCS
CONN 40	38 X 45" Steel vessel epoxy coated	PCS
CONN 60	38 X 65" Steel vessel internal/external marine wet spray	PCS
CONN 80	38 X 86" Steel vessel internal/external marine wet spray	PCS
CONN 120	48 X 84" Steel vessel internal/external marine wet spray	PCS

COMPLETE WATER SOFTENERS

WATER SOFTENERS



CODE	PRODUCT	UNIT
COMPLETE WATER SOFTENERS		
WC1035	10x35 vessel, 25lts resin, riser and strainers, digital valve, 100ltr brine tank with grid & brine valve. Flow rate 750lts/hr (max)	PCS
WC1054	10x54 vessel, 42lts resin, riser and strainers, digital valve, 100ltr brine tank with grid & brine valve. Flow rate 1500lts/hr (max)	PCS
WC1354	13x54 vessel, 70lts resin, riser and strainers, digital valve, 100ltr brine tank with grid & brine valve. Flow rate 2500lts/hr (max)	PCS
WC1465	14x65 vessel, 100lts resin, riser and strainers, digital valve, 100ltr brine tank with grid & brine valve. Flow rate 3000lts/hr (max)	PCS
DELTA WATER SOFTENERS		
ESCALDA	Non-electric auto water softener complete with brine tank & valve	PCS
MORAVA	Non-electric duplex auto water softener complete with brine tank & valve	PCS

FLOW METERS & ROTAMETERS

INLINE & PANEL MOUNT FLOW METERS



PANEL MOUNT FLOW METERS

CODE	PRODUCT	UNIT
PANEL MOUNT		
Z-3000	0.1-1.4lts/min Panel mount	PCS
Z-3001	1-7lts/min Panel mount	PCS
Z-3002	1.8-18lts/min Panel mount	PCS
Z-3003	5-40lts/min Panel mount	PCS
Z-3004	10-60lts/min Panel mount	PCS

INLINE FLOW METERS

CODE	PRODUCT	UNIT
WITH STAINLESS STEEL GUIDE ROD		
Z5015-1-10	1-10lts/min 1/2" Male connection	PCS
Z5015-3-30	3-30lts/min 1/2" Male connection	PCS
Z5025-3-30	3-30lts/min 3/4" Female connection	PCS
Z5050-20-180	20-180lts/min 2" Female connection (Glue)	PCS
CONTINUED ON NEXT PAGE		

FLOW METERS & ROTAMETERS

INLINE & PANEL MOUNT FLOW METERS



CODE	PRODUCT	UNIT
Z5065-80-400	80-400lts/min 2 1/2" Female connection	PCS
Z5032-5-50	50-50lts/min 1" Female connection (NPT)	PCS
WITHOUT STAINLESS STEEL GUIDE ROD		
Z5615-1/2	3-30lts/min 1/2" Male connection	PCS
Z5615-3/4	3-30lts/min 3/4" Male connection	PCS
Z5625	5-50lts/min 3/4" Female connection (NPTF)	PCS
Z5625 8-80F	8-80lts/min 3/4" Female connection (NPTF)	PCS
Z5632 8-80	8-80lts/min 1" Female connection (NPTF)	PCS
Z5650-20-200	20-200lts/min Glue	PCS
Z5650-30-300	30-300lts/min Glue	PCS
Z5650-50-500	50-500lts/min Glue	PCS
Z5650-80-800G	80-800lts/min Glue	PCS
Z5065-200-1000	200-1000lts/min 2 1/2" Female connection Glue	PCS
LZS-100	20-120 m3/hr DIN 100 flange	PCS

DIGITAL FLOW METERS

DIGITAL FLOW METERS



CODE	PRODUCT	UNIT
DIGITAL FLOW METERS		
KF510-10	0.1-1.8 m ³ /hr, 3/8" BSP 24V DC, 4-20mA pulse and 5m cable	PCS
KF510-20	0.3-6m ³ /hr, 3/4" BSP 24V DC, 4-20mA pulse and 5m cable	PCS
KF510-25	0.5-12m ³ /hr, 1" BSP 24V DC, 4-20mA pulse and 5m cable	PCS
KF510-40	2-24M ³ /H 24VDC compact type 4-20mA/pulse	PCS
KF510-50	4-40m ³ /hr, 2" BSP 24V DC, 4-20mA pulse and 5m cable	PCS
KF510-65	6-60m ³ /hr, DIN 65 wafer 24V DC, 4-20mA pulse and 5m cable	PCS
KF510-80	10-100m ³ /hr, DIN 80 wafer 24V DC, 4-20mA pulse and 5m cable	PCS
KF510-100	15-150m ³ /hr, DIN 100 wafer 24V DC, 4-20mA pulse and 5m cable	PCS

PRESSURE GAUGES

BOTTOM & BACK ENTRY PRESSURE GAUGES



CODE	PRODUCT	UNIT
BOTTOM & BACK ENTRY PRESSURE GAUGES		
Y630-0.2.5	0-2.5 Bar, 63mm, 1/4" bottom entry	PCS
Y630-4	0-4 Bar, 63mm, 1/4" bottom entry	PCS
Y630-0.6	0-6 Bar, 63mm, 1/4" bottom entry	PCS
Y630-10	0-10 Bar, 63mm, 1/4" bottom entry	PCS
Y630-0.16	0-16 Bar, 63mm, 1/4" bottom entry	PCS
Y630-25	0-25 Bar, 63mm, 1/4" bottom entry	PCS
Y630-100	0-100 Bar, 63mm, 1/4" bottom entry	PCS
Y630-4B	0-4 Bar, 63mm, 1/4" back entry	PCS
Y630-6B	0-6 Bar, 63mm, 1/4" back entry	PCS
Y630-10B	0-10 Bar, 63mm, 1/4" back entry	PCS
Y630-16B	0-16 Bar, 63mm, 1/4" back entry	PCS
Y630-25B	0-25 Bar, 63mm, 1/4" back entry	PCS
Y630-100B	0-100 Bar, 63mm, 1/4" back entry	PCS

NEEDLE VALVES

HIGH PRESSURE STAINLESS STEEL NEEDLE VALVES



CODE	PRODUCT	UNIT
HIGH PRESSURE STAINLESS STEEL NEEDLE VALVES		
DN5	High pressure 316 stainless steel 1/4" needle valve	PCS
DN9	High pressure 316 stainless steel 3/4" needle valve	PCS
DN12	High pressure 316 stainless steel 1" needle valve	PCS
DN12-2	High pressure 316 stainless steel 2" needle valve	PCS

GLOBE VALVES

STAINLESS STEEL GLOBE VALVES



CODE	PRODUCT	UNIT
STAINLESS STEEL GLOBE VALVES		
GV001	1" Globe valve SS304	PCS
GV0012	1/2" Globe valve SS304	PCS
GV0034	3/4" Globe valve SS304	PCS

CONTROLLERS & MICROPROCESSORS

CONDUCTIVITY METERS & CONTROLLERS



CODE	PRODUCT	UNIT
CONDUCTIVITY METERS & CONTROLLERS		
CCT320A-01	Conductivity monitor range 0-200ppm with stainless steel probe	PCS
CCT320A-1	Conductivity monitor range 0-2000ppm with plastic probe	PCS
CCT320A-10	Conductivity monitor range 0-20 000ppm with graphite probe	PCS
CON1134-13	1.0cm-1 plastic sensor for CCT320A-1	PCS
CON2136-13	10.0cm-1 graphite sensor for CCT320A-10	PCS
B&A-TDS	Before & after battery powered TDS meter with quick connect fittings (one display)	PCS
OS3020-230	Industrial RO PC controller	PCS
SR25-1	Conductivity probe for OS3020	PCS
SR25-1UH	Fitting to fit SR25-1 inline	PCS
ROC-2315	Single stage RO controller with probe range 0-2000	PCS
ORP-7500	ORP meter +/- 0-1999mV with sensor and 10m cable	PCS
ROC-2015	RO programmer controller without sensor	PCS
PH-7500	PH meter 0-14pH with sensor and 10m cable	PCS
CCT-8320	RO controller with 2 sensors in 0-4000 out 2-200	PCS
PLEASE INQUIRE ABOUT THE MANY OTHER LOGIC CONTROLLERS & CM METERS AVAILABLE		

WATER TESTING EQUIPMENT

HAND-HELD TDS METERS, PH METERS & TESTING STRIPS



CODE	PRODUCT	UNIT
WATER QUALITY ELECTROLYZER		
AC2-02	Water quality electrolyser	PCS
TDS METER		
AC2-03	0-999ppm TDS meter pen type	PCS
9532800	PH/TDS/Salinity/Cond/Temp meter	PCS
2520230	Eco EC-tester high 0-19ms/cm	PCS
TEST STRIPS		
2745125	Copper test strips	PCS
2755250	Hach 5 in 1 test strips (50pcs)	PCS
MANY OTHER TEST EQUIPMENT ITEMS ARE AVAILABLE, PLEASE INQUIRE		

PUMPS VARIOUS

DOMESTIC RO PUMPS



CODE	PRODUCT	UNIT
DOMESTIC RO PUMPS		
RO-102P	Standard pump for domestic RO-102	PCS
RO-102T	Transformer for above	PCS
FE-115P	LF-30L Standard pump for domestic FE-125	PCS
FE-115T	Transformer 24V/220V/1.2A for above	PCS
RO-116P	High flow pump for domestic RO-116	PCS
RO-116T	Transformer for above	PCS
FE-300P	HF-50L double head pump for domestic FE-300PD & FE-800GPD (2x pumps)	PCS
FE-300T	Transformers 36V/220V/2A for FE-300P & FE800GPD (x2)	PCS
FE-600P	HF-600 double head pump for domestic FE-600PD & FE-600GPD	PCS
FE-600T	Transformer 48V/220V/5A for FE-600PD & FE-600GPD	PCS
CE8-115P	UP-6000 pump 24V DC for CE8	PCS
CE8-115T	Transformer for UP-6000 220V/24V 1A	PCS
CE5-300P	UP-9100 pump 24V DC for CE5	PCS
CE5-300T	Transformer for UP-9100 220V/24V 4.2A	PCS

PUMPS VARIOUS

MULTISTAGE & PRESSURE BOOSTING PUMPS



CODE	PRODUCT	UNIT
HIGH PRESSURE & RO SPECIFIC PUMPS		
CDLF2-13	CNP SS Pump male thread connection 220V 50Hz single phase	PCS
CDLF2-18	CNP SS Pump male thread connection 220V 50Hz single phase	PCS
CDLF8-12	CNP SS316 380V 3 phase 4kW 50Hz round flange connection	PCS
BOOSTING PUMPS FOR DOMESTIC APPLICATIONS		
SCALA2	All in one pressure boosting pump for domestic applications	PCS
JPC4	Self priming, single stage, centrifugal pump	PCS

PUMPS VARIOUS

HIGH PRESSURE VEIN PUMPS FOR RO



CODE	PRODUCT	UNIT
HIGH PRESSURE VEIN PUMPS FOR RO		
PRG7ASX	700 ltr/hr @ 14 Bar stainless steel Vein pump, 370W include motor	PCS
PRG10ASX	1080 ltr/hr @ 14 Bar stainless steel Vein pump, 650W include motor	PCS
PRG7 MOTOR	Motor for PRG7ASX pump 700lts/hr	PCS
PRG10 MOTOR	Motor for PRG10ASX pump 1080lts/hr	PCS
PRG7ASXP	700 ltr/hr @ 14 Bar stainless steel Vein pump	PCS
PRG10ASXP	1080 ltr/hr @ 14 Bar stainless steel Vein pump	PCS

PUMP FLOAT SWITCH



CODE	PRODUCT	UNIT
PC-8A	Float switch with 6m heavy duty cable & cable weight	1

PUMPS VARIOUS

DOSING & PH DOSING PUMPS



CODE	PRODUCT	UNIT
DOSING PUMP		
PKX01039A7	Etatron PKX dosing pump	PCS
PLX3603801	Etatron DLX pH dosing pump	PCS
SCO00030001	Etatron DLX pH probe kit	PCS

INDUSTRIAL CONTROLS

SOLENOID VALVES, PRESSURE SWITCHES ETC.



CODE	PRODUCT	UNIT
DANFOSS SOLENOID VALVES		
042U4001	1/4" Normally closed 0.3-16 bar range	PCS
042U4021	1/2" Normally closed 0.3-16 bar range	PCS
042U4031	3/4" Normally closed 0.3-16 bar range	PCS
042U4041	1" Normally closed 0.3-16 bar range	PCS
DANFOSS COIL & PLUGS FOR SOLENOID VALVES		
042N0840	Coil 230V 50/60Hz 7.5W	PCS
042N0156	Plug	PCS
DANFOSS PRESSURE SWITCHES		
060-121766	KPI 35 1/4" 0.2-8 bar range	PCS
060-508166	KPI 38 1/4" 8-28 bar range	PCS
061B100866	MBC 5000 1/4" 1-10 bar range	PCS
061B100066	MBC 5000 1/4" 5-20 bar range	PCS
061B100766	MBC 5000 1/4" 5-40 bar range	PCS
061B100166	MBC 5000 1/4" 10-100 bar range	PCS

INDUSTRIAL CONTROLS

SOLENOID VALVES, PRESSURE SWITCHES ETC.



CODE	PRODUCT	UNIT
DANFOSS PRESSURE TRANSMITTERS		
060G1124	MBS 3000 1/4" 0-6 bar range 4-20mA output	PCS
060G1125	MBS 3000 1/4" 0-10 bar range 4-20mA output	PCS
060G1133	MBS 3000 1/4" 0-16 bar range 4-20mA output	PCS
060G1430	MBS 3000 1/4" 0-25 bar range 4-20mA output	PCS
060G1105	MBS 3000 1/4" 0-40 bar range 4-20mA output	PCS
STAINLESS STEEL SOLENOID VALVES		
YCD21-15GSES91B	1/2" Normally closed solenoid valve (stainless steel)	PCS
YCD21-20GSES91B	3/4" Normally closed solenoid valve (stainless steel)	PCS
YCD21-25GSES91B	1" Normally closed solenoid valve (stainless steel)	PCS
YCD21-40GSES91B	1 1/2" Normally closed solenoid valve (stainless steel)	PCS
YCD21-50GSES91B	2" Normally closed solenoid valve (stainless steel)	PCS

MEDIA

FILTRATION MEDIA, RESINS, SILIPHOS, SOFTENER SALT



CODE	PRODUCT	UNIT
FILTRATION MEDIA, RESINS, SILIPHOS, SOFTENER SALT		
AFM10000	AFM Filter media 0.25 - 0.5mm (grade 0)	25KG
AFM10001	AFM Filter media 0.4-1.0mm (grade 1)	25KG
AFM10002	AFM Filter media 1.0-2.0mm (grade 2)	25KG
AFM10003	AFM Filter media 2.0-4.0mm (grade 3)	25KG
A860S	Tanin (colour) removal resin	1LTR+
ANTHRACITE	Filtration media	40KG
AQUASTAB	Aquastab pebbles pH correction	1KG
BIRM	Iron removal media	18KG
CALCITE	pH fix media	25KG
C180-18	Polymex Softening Resin	25LTR
FGSALT	Food grade softener salt	10KG
GAC	Coconut shell carbon	25KG
GARNET	Filtration media	40KG
KDF	Genuine USA KDF55	1KG+
MB20	Mixed bed ion exchange resin	1LTR+
PPA400	Anion resin	25KG
PPC100H	Cation resin	25KG
SCM01	German made scale net media for "salt less" softeners	1LTR+
SILIPHOS	Siliphos / Hexameta Phosphate mix	1KG+
SSALT	Softener salt	10KG

DOW FILMTEC MEMBRANES

REVERSE OSMOSIS MEMBRANES



WCSA ARE THE OFFICIAL, APPOINTED DISTRIBUTOR FOR DOW FILMTEC MEMBRANES IN SOUTH AFRICA

CODE	PRODUCT	UNIT
TAP WATER MEMBRANES		
TW30-1812-50	50 GPD membrane	PCS
BW60-1812-75	75 GPD membrane	PCS
TW60-1812-75	Aqualast 75 GPD membrane	PCS
TW30-1812-100	100 GPD membrane	PCS
TW30-2521	2.5" Tap water membrane	PCS
TW30-2540	2.5" Tap water membrane	PCS
TW30-4040	4" Tap water membrane	PCS
TW30-4021	Tap water membrane	PCS
EXTRA LOW ENERGY MEMBRANES		
XLE-2521	2.5" Extra low energy membrane	PCS
XLE-2540	2.5" Extra low energy membrane	PCS
XLE-4040	4" Extra low energy membrane	PCS
XLE-440	8" Extra low energy membrane	PCS
XLE-4021	Extra low energy membrane	PCS
BRACKISH MEMBRANES		
BW30-2540	2.5" Brackish membrane	PCS
BW30-4040	4" Brackish membrane	PCS
BW30-400	8" High rejection brackish water membrane	PCS
ECO-PRO400	8" High rejection brackish membrane at low pressure	PCS
ECO-PRO440	8" High rejection brackish membrane at low pressure	PCS
BW30-400FR	8" Fouling resistant membrane	PCS
BW30-365	8" High rejection brackish water membrane	PCS
BW30-365FR	8" Fouling resistant membrane	PCS

DOW FILMTEC MEMBRANES

REVERSE OSMOSIS MEMBRANES



WCSA ARE THE OFFICIAL, APPOINTED DISTRIBUTOR FOR DOW FILMTEC MEMBRANES IN SOUTH AFRICA

CODE	PRODUCT	UNIT
LOW ENERGY MEMBRANES		
LE-4040	4" Low energy membrane	PCS
LC LE-4040	Large commercial low energy 4040 membrane	PCS
LE-400	8" Low energy membrane	PCS
LE-440I	8" Low energy (ilec) membrane	PCS
SEAWATER MEMBRANES		
SW30-2521	2.5" Seawater membrane	PCS
SW30-2540	2.5" Seawater membrane	PCS
SW30-4040	4" Seawater membrane	PCS
SW30HRLE-4040	4" High rejection low energy seawater membrane	PCS
SW30HRLE-400	8" High rejection low energy seawater membrane	PCS
FULL-FIT ELEMENTS		
HSRO 390-FF	8" Heat sanitize membrane	PCS
NANOFILTRATION MEMBRANES		
NF90-2540	Nanofiltration membrane	PCS
NF90-4040	Nanofiltration membrane	PCS
NF90-400	Nanofiltration membrane	PCS
NF270-2540	Nanofiltration membrane	PCS
NF270-4040	Nanofiltration membrane	PCS
NF270-400	Nanofiltration membrane	PCS

DOW FILMTEC MEMBRANES

REVERSE OSMOSIS MEMBRANES



WCSA ARE THE OFFICIAL, APPOINTED DISTRIBUTOR FOR DOW FILMTEC MEMBRANES IN SOUTH AFRICA

CODE	PRODUCT	UNIT
BRINE SEALS		
Brine seal - 2.5"	For 2.5" membranes	PCS
Brine seal - 4"	For 4" membranes	PCS
Brine seal - 8"	For 8" membranes	PCS
MEMBRANE SPARES		
42777	2.5" and 4" membrane interconnector	PCS
PURICOM MEMBRANE		
CE3012-300	300GPD membrane to fit Puricom housing	PCS
FLUXTEC MEMBRANE		
TW2412-300	300 GPD membrane for FE-300 & FE-600	PCS
TW2012-200GPD	200 GPD membrane for FE-800	PCS
ULP3020	Membrane for standard 20" housing	PCS
SOLEWATER MEMBRANE		
FTR06-1	Sole water 300 GPD (300 GPD membrane)	PCS

REVERSE OSMOSIS MEMBRANE PRESSURE VESSELS

FRP & STAINLESS STEEL PRESSURE VESSELS



PRODUCT	OPERATING PRESSURE	NO. OF MEMBRANES	SIDE/ END
1000PSI-2.5"			
2540-1000E-1W	2540 1000PSI FRP pressure vessel single element	1	End
300PSI 2.5"			
2521-300E-1W	2521 300PSI pressure vessel single element	1	End
2540-300E-1W	2540 300PSI pressure vessel single element	1	End
1000PSI 4"			
4040-1000S-1W	4040 1000PSI FRP pressure vessel single element	1	Side
300PSI 4"			
4040-300E-1W	4040 300PSI FRP pressure vessel single element	1	End
4040-300S-1W	4040 300PSI FRP pressure vessel single element	1	Side
4040-300S-2W	4040 300PSI FRP pressure vessel double element	2	Side
1000PSI 8"			
8040-1000S-1W	8040 1000PSI FRP pressure vessel single element	1	Side
300PSI 8"			
8040-300S-1W	8040 300PSI FRP pressure vessel single element	1	Side
8040-300S-2W	8040 300PSI FRP pressure vessel double element	2	Side
OTHER SIZES & CONFIGURATIONS AVAILABLE PLEASE CONTACT US FOR INFORMATION & PRICING			
304 STAINLESS STEEL PRESSURE VESSELS 300PSI			
BN1-2521	300PSI Stainless steel pressure vessel for 2521 element	1	End
BN1-2540	300PSI Stainless steel pressure vessel for 2540 element	1	End
BN2-2540	300PSI Stainless steel pressure vessel for 2540 element	1	Side
BN1-4040	300PSI Stainless steel pressure vessel for 4040 element	1	End
BN2-4040	300PSI Stainless steel pressure vessel for 4040 element	1	Side

GROOVED COUPLINGS & FITTINGS

STAINLESS STEEL & NYLON GROOVED COUPLINGS & FITTINGS



CODE	PRODUCT	UNIT
STAINLESS STEEL VICTAULIC		
SS350-034-304	350PSI 304 Stainless steel 3/4"	PCS
SS350-1-304	350PSI 304 Stainless steel 1"	PCS
SS350-112-304	350PSI 304 Stainless steel 1 1/2"	PCS
SS350-2-304	350PSI 304 Stainless steel 2"	PCS
SS350-212-304	350PSI 304 Stainless steel 2.5"	PCS
SS350-3-304	350PSI 304 Stainless steel 3"	PCS
SS350-4-304	350PSI 304 Stainless steel 4"	PCS
SS1200-1-316	1200PSI 316 Stainless steel 1"	PCS
SS1200-112-316	1200PSI 316 Stainless steel 1 1/2"	PCS
SS1200-212-316	1200PSI 316 Stainless steel 2.5"	PCS
STAINLESS STEEL MALE THREAD TO IPS GROOVE		
MTC-1	350PSI, 316SS, 1" Male thread to IPS groove	PCS
MTC-1/12	350PSI, 316SS, 1.5" Male thread to IPS groove	PCS
MTC-2	350PSI, 316SS, 2" Male thread to IPS groove	PCS

PVC PIPING & FITTINGS

IMPORTED, GREY PVC PIPE



CODE	PRODUCT	UNIT
IMPORTED, GREY PVC PIPE		
PVCP20X4	PVC piping 20mm x 4 meter colour grey	PCS
PVCP25X4	PVC piping 25 mm x 4 meter colour grey	PCS
PVCP32X4	PVC piping 32 mm x 4 meter colour grey	PCS
PVCP40X4	PVC piping 40 mm x 4 meter colour grey	PCS
PVCP50X4	PVC piping 50 mm x 4 meter colour grey	PCS
PVCP63X4	PVC piping 63 mm x 4 meter colour grey	PCS
PVCP75X4	PVC piping 75 mm x 4 meter colour grey	PCS

PVC PIPING & FITTINGS

IMPORTED, GREY PVC FITTINGS



CODE	PRODUCT	UNIT
REDUCING NIPPLES		
NRE025B	3/4" x 1/2" Reducing nipple	PCS
NRE032C	1" x 3/4" Reducing nipple	PCS
REDUCING BUSH		
RCE025B	3/4" x 1/2" Reducing bush	PCS
REDUCING SOCKET		
RLD040D	40mm x 50mm x 32mm Reducing socket	PCS
MALE THREADED ADAPTOR		
AMG016B	16mm x 20mm x 1/2" Male threaded adaptor	PCS
AMG020C	20mm x 25mm x 3/4" Male threaded adaptor	PCS
AMG025C	25mm x 32mm x 3/4" Male threaded adaptor	PCS
AMG025D	25mm x 32mm x 1" Male threaded adaptor	PCS
FEMALE THREADED ADAPTOR		
AFG020C	20mm x 3/4" Female threaded adaptor	PCS
90° ELBOW		
GOD0200	20mm Elbow	PCS
GOD0250	25mm Elbow	PCS
GOD0320	32mm Elbow	PCS

ABOVE IS ONLY AN INDICATION, FULL RANGE OF FITTINGS IS AVAILABLE

PVC PIPING & FITTINGS

IMPORTED, GREY PVC FITTINGS



CODE	PRODUCT	UNIT
SW UNION WITH O-RING		
BOD0200	20mm SW Union	PCS
BOD0250	25mm SW Union	PCS
BOD0320	32mm SW Union	PCS
UNION		
BOG020B	20mm x 1/2" Union	PCS
BOG050F	50mm x 1 1/2" Union	PCS
SINGLE UNION VALVE		
SVD0200	20mm Union valve	PCS
SVD0250	25mm Union valve	PCS
SVD0320	32mm Union valve	PCS
ADAPTOR BUSH		
RCG025B	25mm x 1/2" Adaptor bush	PCS
RCG032C	32mm x 3/4" Adaptor bush	PCS
NIPPLES		
NIE025C	3/4" PVC Nipple	PCS
NIE032D	1" PVC Nipple	PCS
CLIPS		
PTD0900	90mm Clips	PCS

ABOVE IS ONLY AN INDICATION, FULL RANGE OF FITTINGS IS AVAILABLE

PIPING & FITTINGS

QUICK CONNECT FITTINGS



CODE	PRODUCT		UNIT
STRAIGHT ADAPTORS			
STRAIGHT ADAPTOR	Tube	Thread	
PIW0402	1/4"	1/8"	PCS
PIW0402-2 with O-ring	1/4"	1/8"	PCS
PIW0404	1/4"	1/4"	PCS
PIW0404-2 with O-ring	1/4"	1/4"	PCS
PIW0406	1/4"	3/8"	PCS
PIW0408	1/4"	1/2"	PCS
PIW0604	3/8"	1/4"	PCS
PIW0606	3/8"	3/8"	PCS
PIW0608	3/8"	1/2"	PCS
PIW2008	20mm	1/2"	PCS
PIW2010	20mm	3/4"	PCS
PIW2508	25mm	1/2"	PCS
PIW2510	25mm	3/4"	PCS
PIW3210	32mm	3/4"	PCS
PIW3212	32mm	1"	PCS

PIPING & FITTINGS

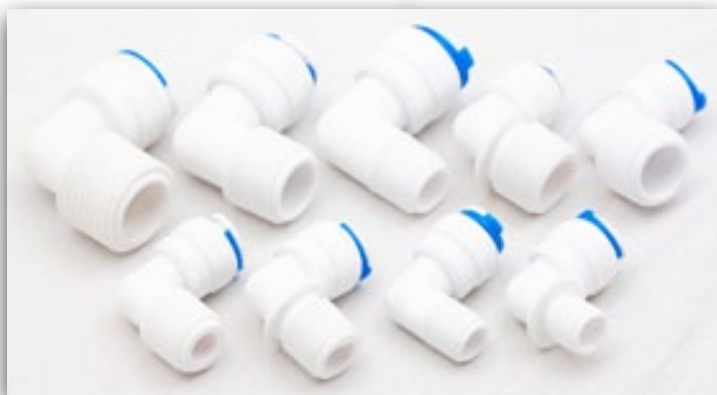
QUICK CONNECT FITTINGS



CODE	PRODUCT		UNIT
FEMALE THREAD STRAIGHT ADAPTORS			
FEMALE STRAIGHT ADAPTOR	Tube	Thread	
PIN0404	1/4"	1/4"	PCS
PIN0408	1/4"	1/2"	PCS
PIN0606	3/8"	3/8"	PCS
PIN0608	3/8"	1/2"	PCS
PIN0410	1/4"	3/4"	PCS
STRAIGHT PIPE TO PIPE ADAPTORS			
STRAIGHT ADAPTOR	Tube	Tube	
PI0404	1/4"	1/4"	PCS
PI0606	3/8"	3/8"	PCS
PI0604	3/8"	1/4"	PCS

PIPING & FITTINGS

QUICK CONNECT FITTINGS



CODE	PRODUCT		UNIT
ELBOW ADAPTORS			
	Tube	Thread	
PLW0402	1/4"	1/8"	PCS
PLW0402-2 with O-ring	1/4"	1/8"	PCS
PLW0404	1/4"	1/4"	PCS
PLW0404-2 with O-ring	1/4"	1/4"	PCS
PLW0406	1/4"	3/8"	PCS
PLW0406-2 with O-ring	1/4"	3/8"	PCS
PLW0604	3/8"	1/4"	PCS
PLW0606	3/8"	3/8"	PCS
PLW0608	3/8"	1/2"	PCS
FEMALE THREAD ELBOW ADAPTORS			
PLN2008	20mm	1/2"	PCS
PLN2010	20mm	3/4"	PCS
PLN2508	25mm	1/2"	PCS
PLN2510	25mm	3/4"	PCS
PLN3212	32mm	1"	PCS

PIPING & FITTINGS

QUICK CONNECT FITTINGS



CODE	PRODUCT		UNIT
UNION ELBOW ADAPTORS			
	Tube	Tube	
PL0404	1/4"	1/4"	PCS
PL0606	3/8"	3/8"	PCS
PL2020	20mm	20mm	PCS
PL2525	25mm	25mm	PCS
PL3232	32mm	32mm	PCS
TEE PIECES			
PT040404	1/4"	EQUAL	PCS
PT060606	3/8"	EQUAL	PCS
PT040604	1/4" X 3/8" X 1/4"	3/8" on centre	PCS
PT060406	3/8" X 1/4" X 3/8"	1/4" on centre	PCS

PIPING & FITTINGS

QUICK CONNECT FITTINGS



CODE	PRODUCT		UNIT
CENTRE THREAD TEE PIECES			
CENTRE THREAD TEE ADAPTOR	Tube	Thread	
PTE040404	1/4"	1/4"	PCS
PTE060606	3/8"	3/8"	PCS
SPLIT ADAPTORS			
SPLIT ADAPTOR	Tube	Tube	
PY040404	1/4"	EQUAL	PCS
PY060606	3/8"	EQUAL	PCS

PIPING & FITTINGS

QUICK CONNECT FITTINGS



CODE	PRODUCT		UNIT
DOUBLE ADAPTORS			
DOUBLE ADAPTOR	Tube	Tube	
PB0404-2	1/4"	EQUAL	PCS
TANK CONNECTOR ELBOW			
TANK CONNECTOR ELBOW	Tube	Thread	
PLWJ0404	1/4"	1/4"	PCS

Components South Africa

PIPING & FITTINGS

QUICK CONNECT FITTINGS



CODE	PRODUCT		UNIT
INLINE VALVE			
INLINE VALVE	Tube	Tube	
PV0404	1/4"	1/4"	PCS
PV0606	3/8"	3/8"	PCS
INLINE MALE ADAPTOR VALVE			
RO TANK INLET VALVE	Tube	Thread	
PVW0404	1/4"	1/4"	PCS
PVW0606	3/8"	3/8"	PCS

PIPING & FITTINGS

QUICK CONNECT FITTINGS



CODE	PRODUCT		UNIT
RO STORAGE TANK INLET VALVE			
RO TANK INLET VALVE	Tube	Thread	
PVN0404	1/4"	1/4"	PCS
PVN0606	3/8"	3/8"	PCS
LOW PRESSURE SWITCH			
LOW PRESSURE SWITCH	Tube		
PD04	1/4"		PCS

PIPING & FITTINGS

QUICK CONNECT FITTINGS



CODE	PRODUCT		UNIT
HIGH PRESSURE SWITCH			
HIGH PRESSURE SWITCH	Tube		
PG0404	1/4"		PCS
RO WASTE CONNECTION			
RO WASTE CONNECTION	Tube		
PFRQ04	1/4"	1/4"	PCS
NON-RETURN VALVE			
PIV0404-1/4	1/4" Non-return connector		PCS
PIV0606-3/8	3/8" Non-return connector		PCS

PIPING & FITTINGS

QUICK CONNECT FITTINGS



CODE	PRODUCT		UNIT
AUTO SHUT OFF VALVES			
AUTO SHUT OFF VALVES	Tube	Tube	
FVIN0404	1/4"	1/4"	PCS
FLV01	3/8"	3/8"	PCS
NON RETURN VALVE ELBOW			
NON RETURN VALVE	Tube	Tube	
PVLW0402	1/4"	1/8"	PCS
PVLW0404	1/4"	1/4"	PCS

PIPING & FITTINGS

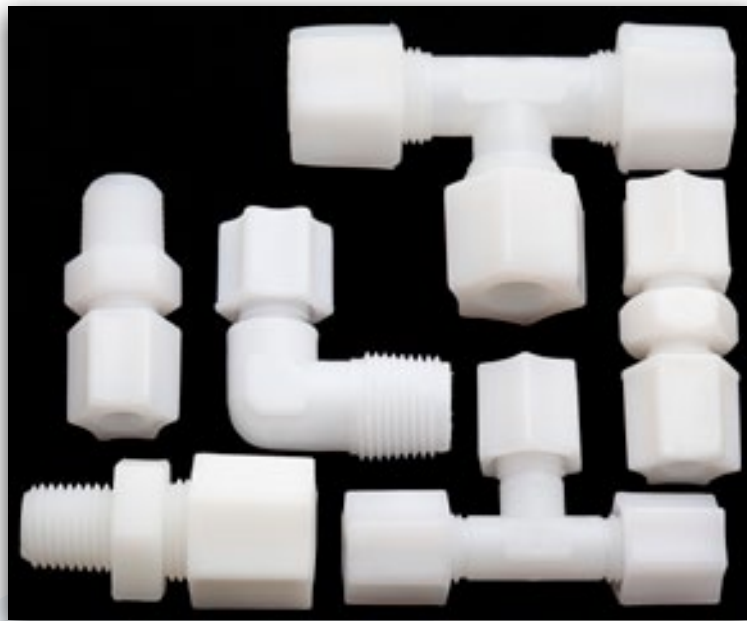
QUICK CONNECT FITTINGS



CODE	PRODUCT	UNIT
TUBING FOR QUICK CONNECT & JACO FITTINGS		
PETW1/4	1/4" White tubing	1M
PETR1/4	1/4" Red tubing	1M
PETB1/4	1/4" Blue tubing	1M
PETW3/8	3/8" White tubing	1M
PETR3/8	3/8" Red tubing	1M
PETB3/8	3/8" Blue tubing	1M

PIPING & FITTINGS

QUICK CONNECT FITTINGS



CODE	PRODUCT	UNIT
JACO STYLE FITTINGS		
ACJ-1044	1/4" Tube x 1/4" thread straight adaptor	PCS
ACJ-1064	3/8" Tube x 1/4" thread straight adaptor	PCS
ACJ-1544	1/4" Tube x 1/4" tube union	PCS
ACJ-4044	1/4" Tube x 1/4" thread elbow adaptor	PCS
ACJ-4046	1/4" Tube x 3/8" thread elbow adaptor	PCS
ACJ-4064	3/8" Tube x 1/4" thread elbow adaptor	PCS
ACJ-4066	3/8" Tube x 3/8" thread elbow adaptor	PCS
ACJ-7044	1/4" Pipe equal tee	PCS
ACJ-7066	3/8" Pipe equal tee	PCS
NYLON NIPPLES		
FCJ-C02	1/4" Nylon nipple	PCS
FCJ-C04	1/2" Nylon nipple	PCS
FCJ-C06	3/4" Nylon nipple	PCS

CHEMICALS

CHEMICALS



CODE	PRODUCT	UNIT
GENESYS		
GENESYS LF	Broad Spectrum Antiscalant and Antifoulant	25KG
GENESYS RC	Antiscalant for Recycle Systems	25KG
GENESYS SW	Sea Water Antiscalant	25KG
GENESYS SI	Silica Antiscalant/Antifoulant	25KG
GENESYS BS	Barium Sulphate Antiscalant	25KG
GENESYS CAS	Calcium Sulphate Antiscalant	25KG
GENESOL 38	Acidic Membrane Cleaner	25KG
GENESOL 40	Alkaline Cleaner	25KG
GENESOL 703	Membrane Cleaner (Alkaline Powder)	25KG
GENESOL 704	Membrane Cleaner (Alkaline Powder) Microbubble Technology	25KG
GENESOL 701	Membrane Cleaner (Acidic Based Powder) Microbubble Technology	25KG
FLOCCULANT		
AQM877	Flocculant general	25LTS
AQM884	High tannin flocculant	25LTS

CAPE TOWN

Tel. +27-21-001-8899

Email: capetown@watersa.co.za

Unit 8 & 9 Waterstone Park
Capricorn Drive, Capricorn Park
Muizenberg

DURBAN

Tel. +27-31-563-2491/2467

Email: durban@watersa.co.za

Unit 19 Briarpark
10 Queen Nandi Drive
Briardene

JOHANNESBURG

Tel. +27-11-453-3959

Email: jhb@watersa.co.za

Unit 30, Route 24 Industrial Park
Fleming Road, Meadowdale
Germiston