



W226

Dolce Slouch

Designed by Faina Goberstein



DOLCE SLOUCH

Designed by **Faina Goberstein**

DESCRIPTION

You will fall in love with this soft and comfortable slouch made out of Dolce by Cascade Yarns. This yarn has just the right combination of alpaca, wool, and silk to make this hat feminine and drapery. The hat is knit in the round in an interesting lacy pattern tapered at the crown. Wide band worked in 2x2 rib not only for forming the right shape, but also for a snug fit.

SIZES S (M, L)

Finished brim circumference 18 (20½, 23)" (45.5 (52, 58.5) cm)

MATERIALS

- 1 (2, 2) skeins of Cascade "Dolce" (55% Superfine Alpaca, 23% wool, 22% silk, 109 yds (100 m) in color #960
- 16" circular needle in size US 8 (5mm), *or size to obtain gauge*
- Set of 5 double-pointed needles in same size
- 16" circular needle in size US 6 (4mm)
- Stitch marker

Darning needle

GAUGE

25 sts = 4" (10 cm) in **Lacy pat** using larger needle, or in **K2, P2 Rib** using smaller needle and slightly stretched

STITCH PATTERNS

K2, P2 Rib

Rnd 1: *K2, p2; rep from * around.

Rep this rnd for **K2, P2 rib**.

Lacy Pattern

(Worked over a multiple of 18 sts)

Rnd 1 (RS): * K3tog, yo, k1, yo, sk2p, p2, k7, p2; rep from * around.

Rnd 2: * K1, yo, k3, yo, k1, p2, k7, p2; rep from * around.

Rnds 3 and 4: * k7, p2; rep from * around.

Rnd 5-12: Rep rnds 1-4 twice more.

Rnd 13: As rnd 1.

Rnd 14: As rnd 2.

Rnd 15: * K7, p2, k3tog, yo, k1, yo, sk2p, p2; rep from * around.

Rnd 16: * K7, p2, k1, yo, k3, yo, k1, p2; rep from * around.

Rnds 17-20: Rep rnds 13-16 once more.

Rnds 21 and 22: As rnd 3.

Rnd 23: As rnd 15.

Rnd 24: As rnd 16.

Rnds 25-28: Rep rnds 21-24 once more.

Rnd 29: As rnd 1.

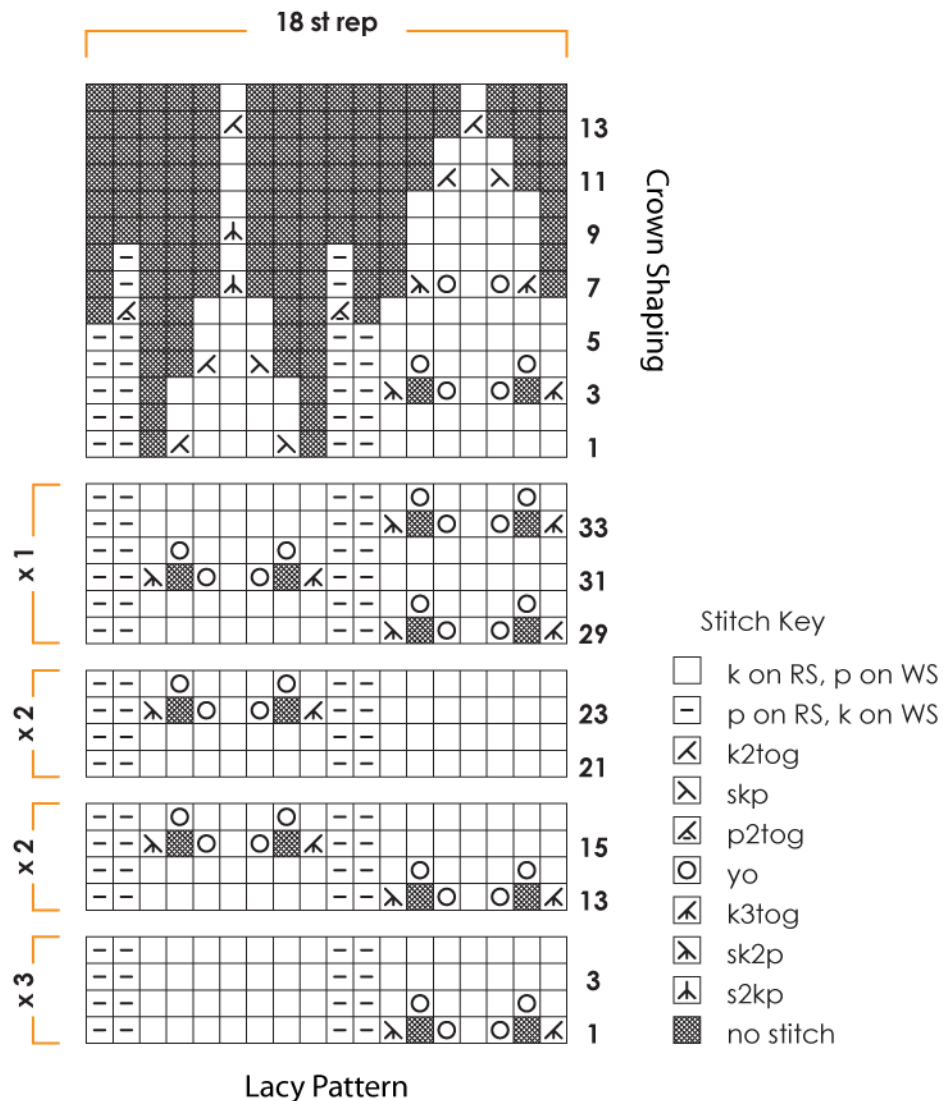
Rnd 30: As rnd 2.

Rnd 31: As rnd 15.

Rnd 32: As rnd 16.

Rnd 33: As rnd 1.

Rnd 34: As rnd 2.



CAP

Using smaller circular needle, cast on 112 (128, 144) sts.
Join rnd, being careful not to twist cast on edge, and mark 1st st.
Work 12 (14, 16) rnds in **K2, P2 Rib**.

Change to larger circular needle.

Next rnd (inc rnd): * K7, p1, M1p; rep from * around – 126 (144, 162) sts.
Work 34 rnds in **Lacy pat**.

Crown Shaping

Dec for crown as follows, changing to double-pointed needles when work becomes too tight to fit on a circular needle.

Rnd 1: * K7, p2, ssk, k3, k2tog p2; rep from * around – 112 (128, 144) sts.

Rnd 2: * K7, p2, k5, p2; rep from * around.

Rnd 3: * K3tog, yo, k1, yo, sk2p, p2, k5, p2; rep from * around.

Rnd 4: * K1, yo, k3, yo, k1, p2, ssk, k1, k2tog, p2; rep from * around – 98 (112, 126) sts.

Rnd 5: * K7, p2, k3, p2; rep from * around.

Rnd 6: * K7, p2tog, k3, p2tog; rep from * around – 84 (96, 108) sts.

Rnd 7: * K3tog, yo, k1, yo, sk2p, p1, s2kp, p1; rep from * around – 56 (64, 72) sts.

Rnd 8: * K5, p1, k1, p1; rep from * around.

Rnd 9: * K5, s2kp; rep from * around – 42 (48, 54) sts.

Rnd 10: Knit.

Rnd 11: * Skp, k1, k2tog, k1; rep from * around—28 (32, 36) sts.

Rnd 12: Knit.

Rnd 13: K2tog around – 14 (16, 18) sts.

Rnd 14: Knit.

Cut yarn, and use darning needle to slide tail through all remaining sts.

Pull tight and fasten securely.

FINISHING

Weave in loose ends.

Block lightly.

ABBREVIATIONS

dec – decrease/decreases/decreasing

inc – increase

k – knit

k2tog – knit 2 together

k3tog – knit 3 together

M1p (make 1 purlwise) – increase 1 st by picking up the strand between sts, twisting it into a loop, and purling it

p – purl

p2tog – purl 2 together

rep – repeat

RS – right side

rnd – round

s2kp – sl 2 sts knitwise at the same time, k1, pass slipped sts over knit st

skp – sl 1 st knitwise, k1, pass slipped st over knit st

sk2p – sl 1 st knitwise, k2tog, pass slipped st over knit st

st – stitch

WS – wrong side