

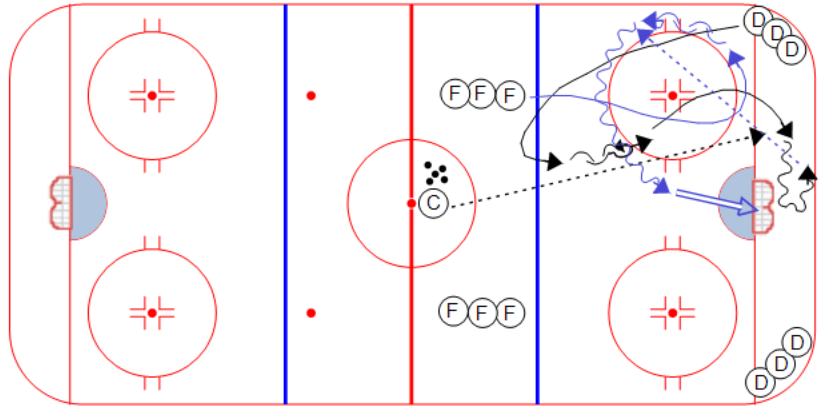
Title : Finnish Half-Ice

Category #1 : Team Systems

Category #2 : Breakout Drills

**Description**

1. on whistle, (D) skates up to blue line and pivots backward
2. after the pivot, (C) dumps a puck into the corner
3. (D) picks it up and initiates a breakout using the misdirection
4. (F) times the play and swings through to receive a board-side breakout
5. (F) attacks the seam and takes a shot (in stride)



Key points :

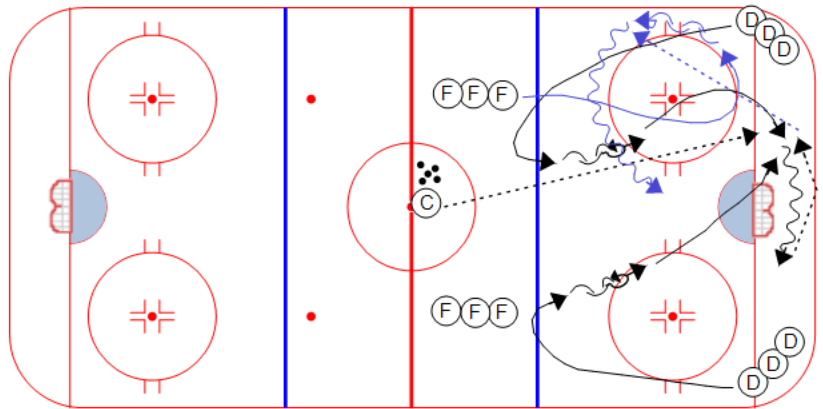
Title : Finnish Half-Ice (seq 2)

Category #1 : Team Systems

Category #2 : Breakout Drills

**Description**

Same set up as above, except add a second defenseman, and use a reverse.



Key points :

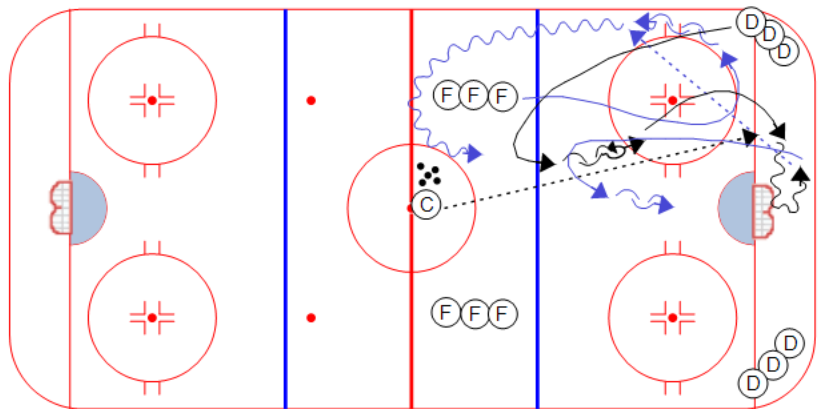
Title : Finnish Half-Ice (seq 3)

Category #1 : Team Systems

Category #2 : Breakout Drills

**Description**

Variation to include a 1 on 1.



Key points :