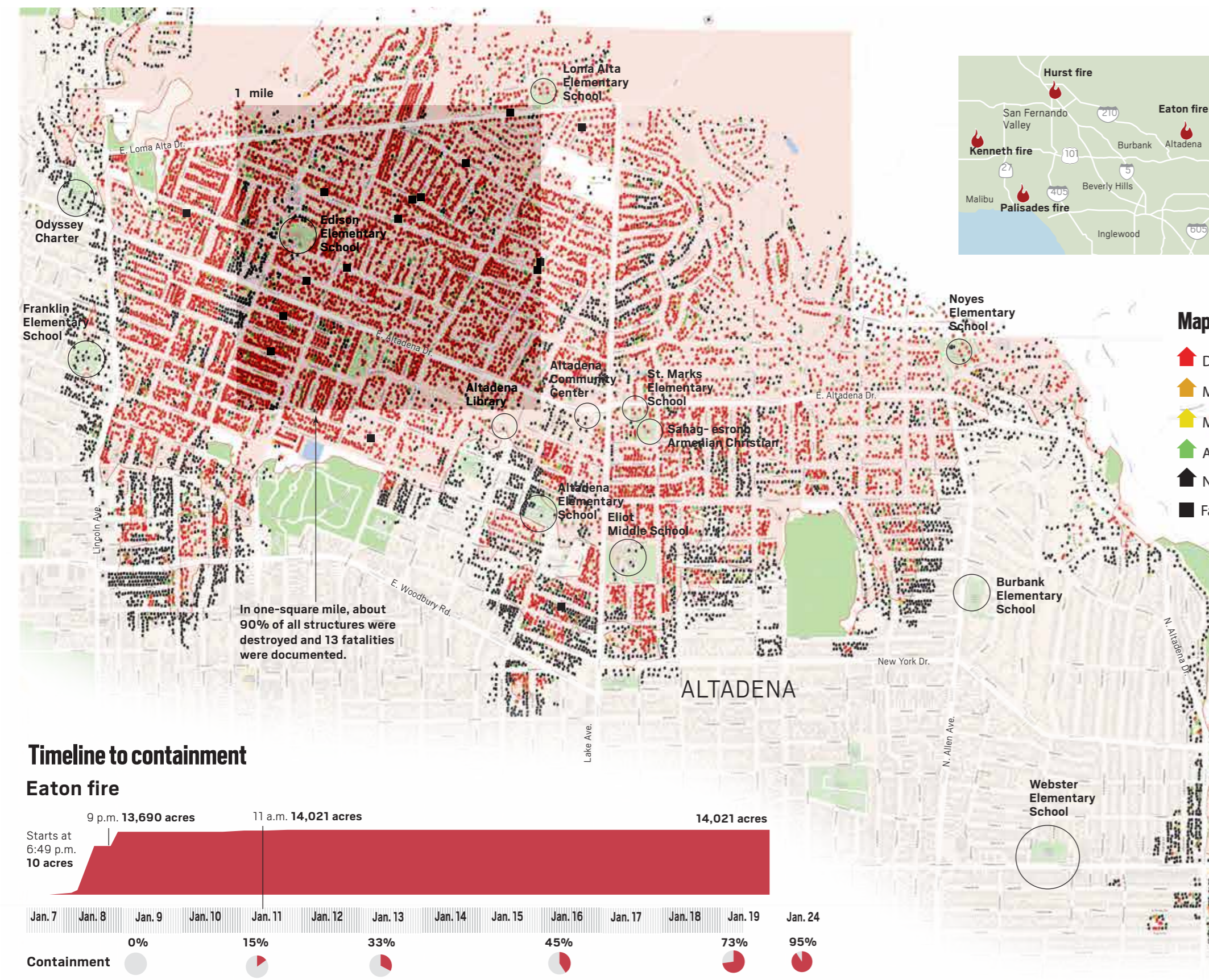


# FOOTPRINTS OF DEVASTATION

Since Los Angeles County's Santa Ana winds-fueled firestorm began Jan. 7, the Eaton and Palisades fires have consumed more than 37,000 acres of homes, businesses and landmarks in Altadena and Pacific Palisades. To date, 28 people have been killed, with some still missing. Cal Fire investigators are still determining the cause of each inferno. Both fires now rank among the 10 most destructive in California history with nearly 16,000 structures destroyed. Fire crews are still working toward 100% containment. These maps show the areas hardest hit and where fire crews were able to stave off the blaze.

By JEFF GOERTZEN and KURT SNIBBE | Southern California News Group



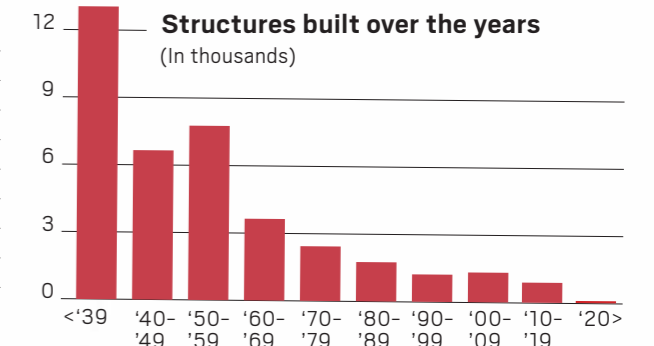
### Map legend

- Destroyed (>50%)
- Major (26-50%)
- Major (10-25%)
- Affected
- No damage
- Fatality

## Eaton fire

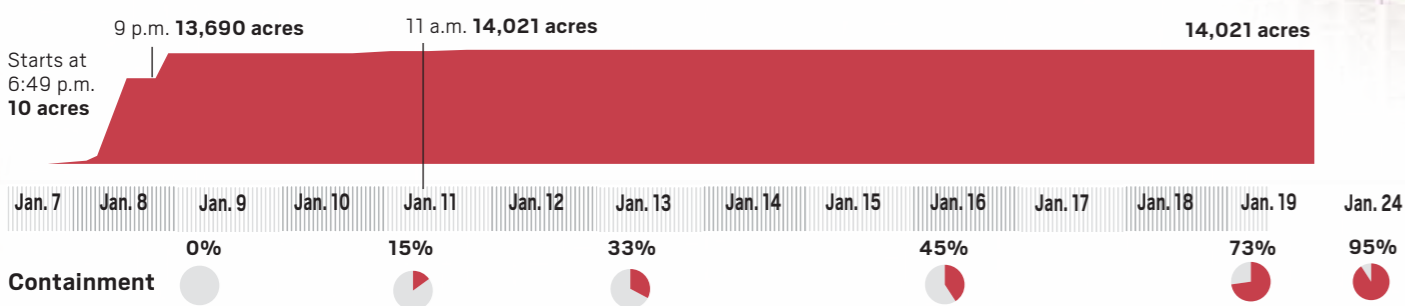
### By the numbers

Eaton incident area	
Daytime population:	88,630
Total households:	38,608
<b>Altadena</b>	
Median home price:	\$1.2 million
Median list price:	\$1.3 million
<b>Sierra Madre</b>	
Median list price:	\$1.65 million
Median home price:	\$1.39 million

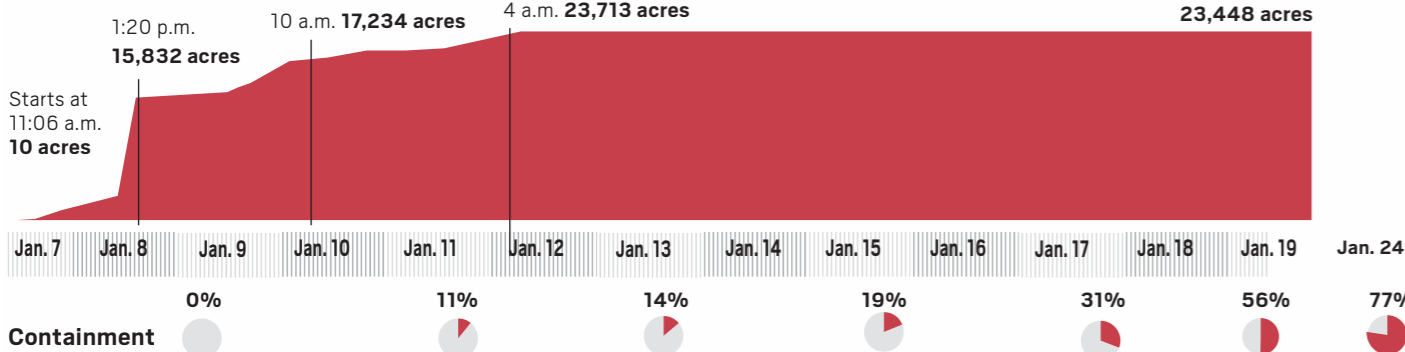


### Timeline to containment

#### Eaton fire



#### Palisades fire



#### Eaton fire

17 civilian fatalities, 8 firefighter injuries

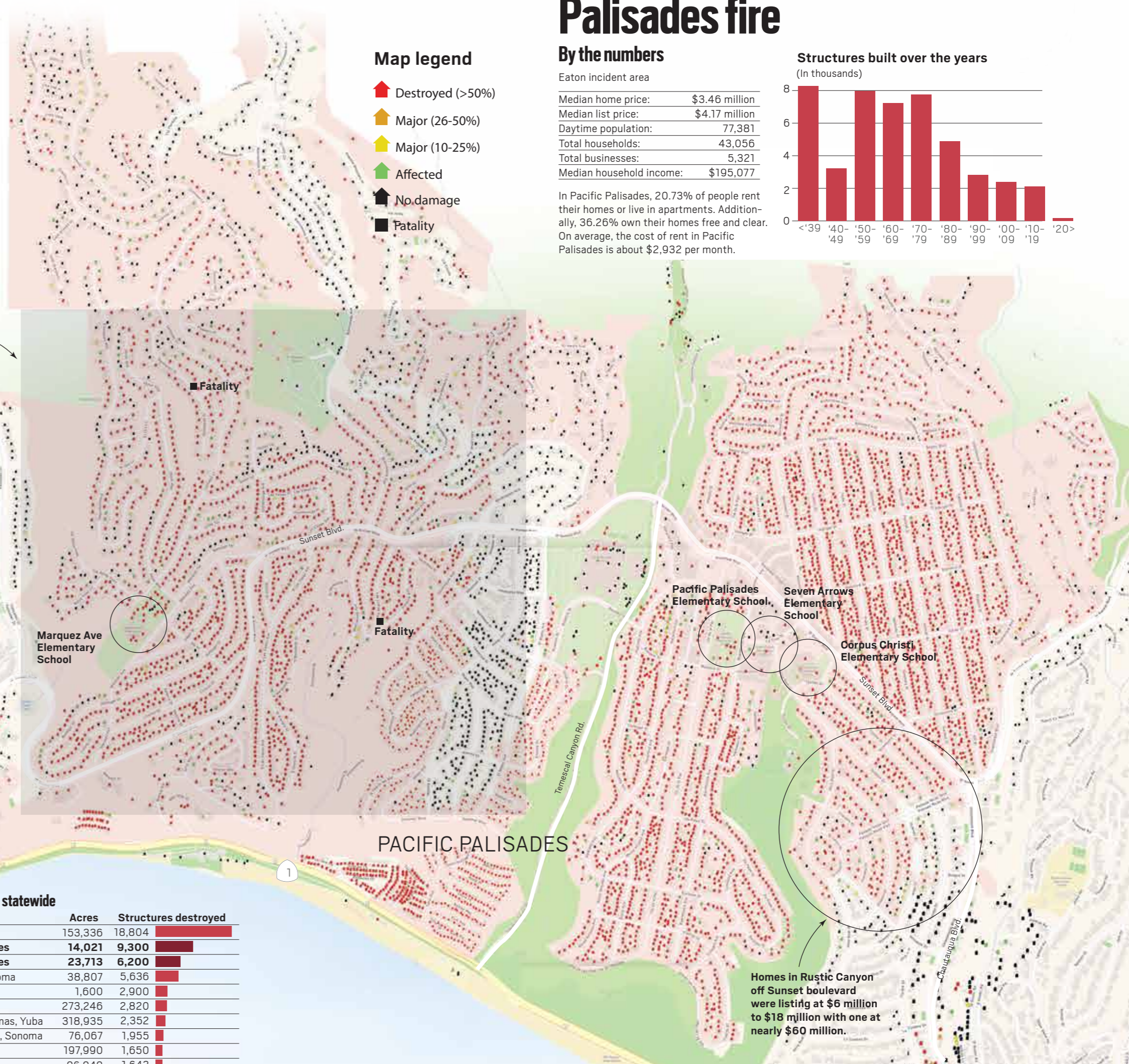
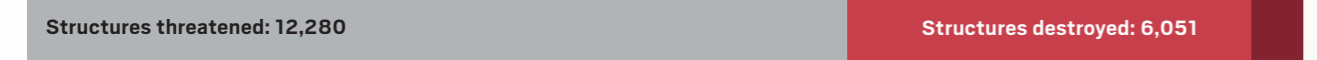
Structures damaged: 1,064



#### Palisades fire

10 civilian fatalities, 3 civilian injuries, 1 firefighter injury

Structures damaged: 788



### Map legend

- Destroyed (>50%)
- Major (26-50%)
- Major (10-25%)
- Affected
- No damage
- Fatality

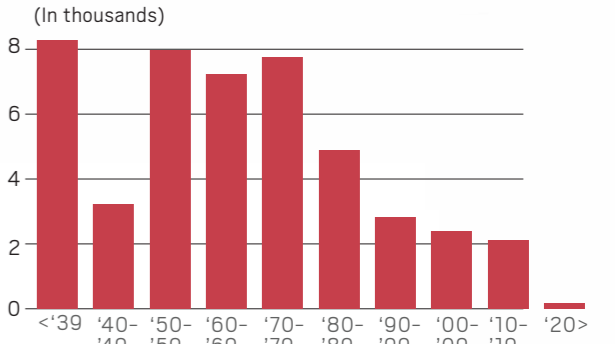
## Palisades fire

### By the numbers

Eaton incident area	
Median home price:	\$3.46 million
Median list price:	\$4.17 million
Daytime population:	77,381
Total households:	43,056
Total businesses:	5,321
Median household income:	\$195,077

In Pacific Palisades, 20.73% of people rent their homes or live in apartments. Additionally, 36.26% own their homes free and clear. On average, the cost of rent in Pacific Palisades is about \$2,932 per month.

### Structures built over the years



### Ranking the fires

Early estimates put the cost of Eaton and Palisades wildfires close to \$50 billion, which would make this the 11th-costliest natural disasters in American history. Statewide these two fires rank second- and third- most destructive fires in California's history. Estimated costs are adjusted for inflation.

Sources: Cal Fire, Census.gov, National Weather Service, FEMA, Howard Jarvis Taxpayers Association, California Department of Insurance, National Oceanic and Atmospheric Administration

### Costliest disasters nationwide

Event	Location	Year	Cost
1. Hurricane Katrina	Louisiana	2005	\$301.3 billion
2. Hurricane Harvey	Texas	2017	\$160 billion
3. Hurricane Ian	Florida	2022	\$119.6 billion
4. Hurricane Maria	Puerto Rico	2017	\$115.2 billion
5. Superstorm Sandy	New Jersey	2012	\$88.5 billion
6. Hurricane Ida	Louisiana	2021	\$84.6 billion
7. Hurricane Helene	Florida	2024	\$78.7 billion
8. Hurricane Irma	Florida Keys	2017	\$64 billion
9. Hurricane Andrew	Florida	1992	\$60.5 billion
10. Drought/heat wave	Midwest	1988	\$54.6 billion
11. California wildfires	Los Angeles	2025	\$50 billion

### Most destructive fires statewide

Fire	Year	Counties	Acres	Structures destroyed
1. Camp	2018	Butte	153,336	18,804
2. Eaton	2025	Los Angeles	14,021	9,300
3. Palisades	2025	Los Angeles	23,713	6,200
4. Tubbs	2017	Napa, Sonoma	38,807	5,636
5. Tunnel	1991	Alameda	1,600	2,900
6. Cedar	2003	San Diego	273,246	2,820
7. North Complex	2020	Butte, Plumas, Yuba	318,935	2,352
8. Valley	2015	Lake, Napa, Sonoma	76,067	1,955
9. Witch	2007	San Diego	197,990	1,650
10. Woolsey	2018	Ventura	96,949	1,643