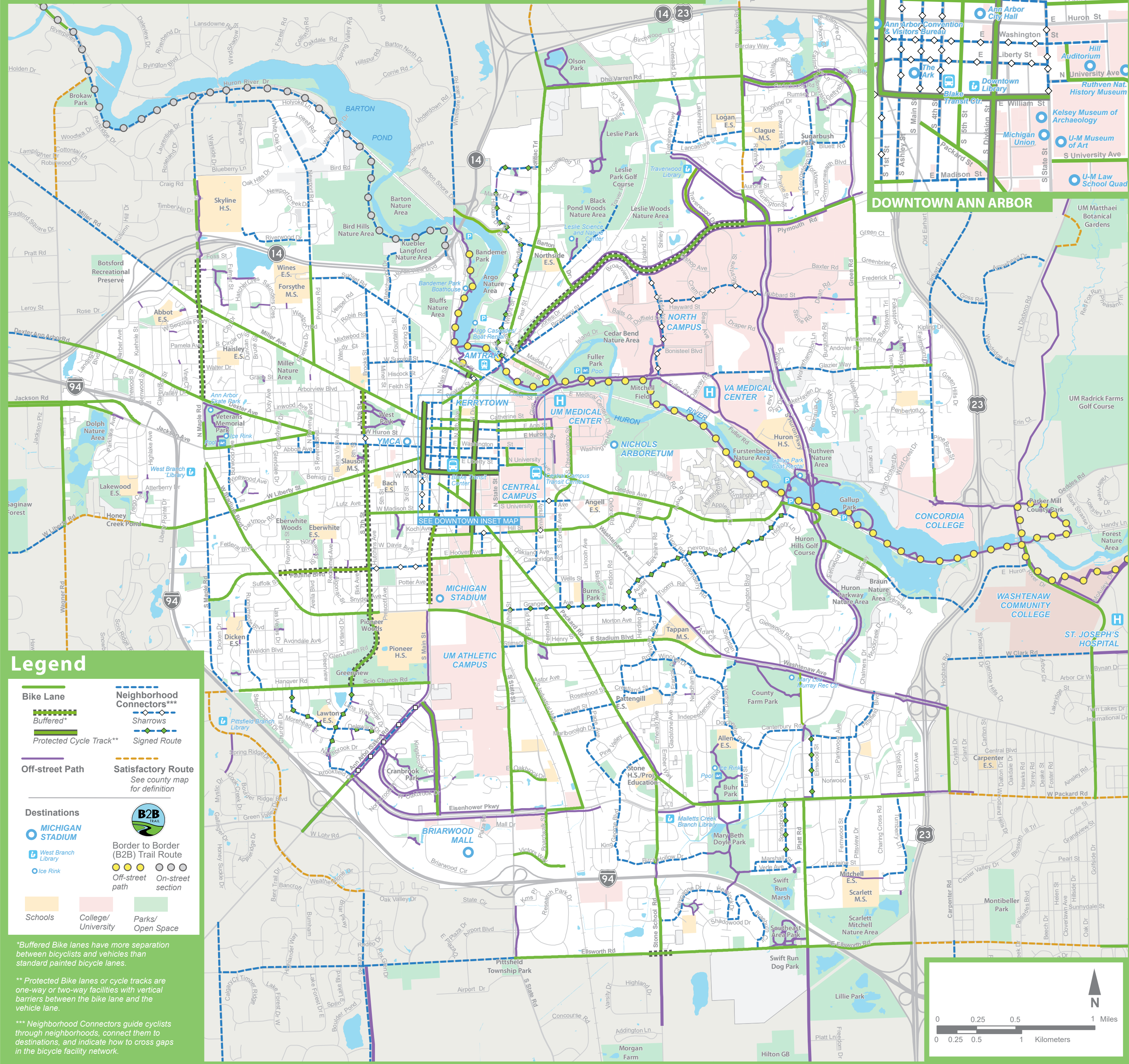
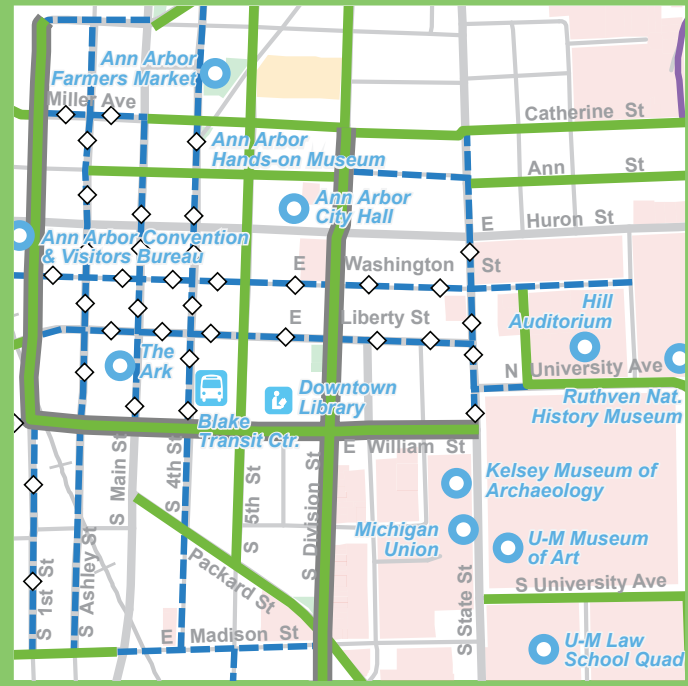


ANN ARBOR BIKE MAP



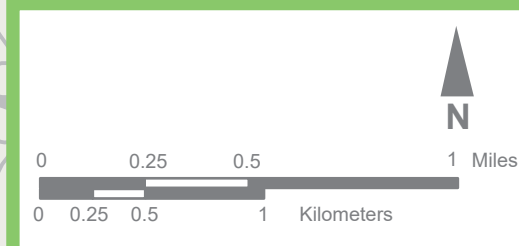
DOWNTOWN ANN ARBOR



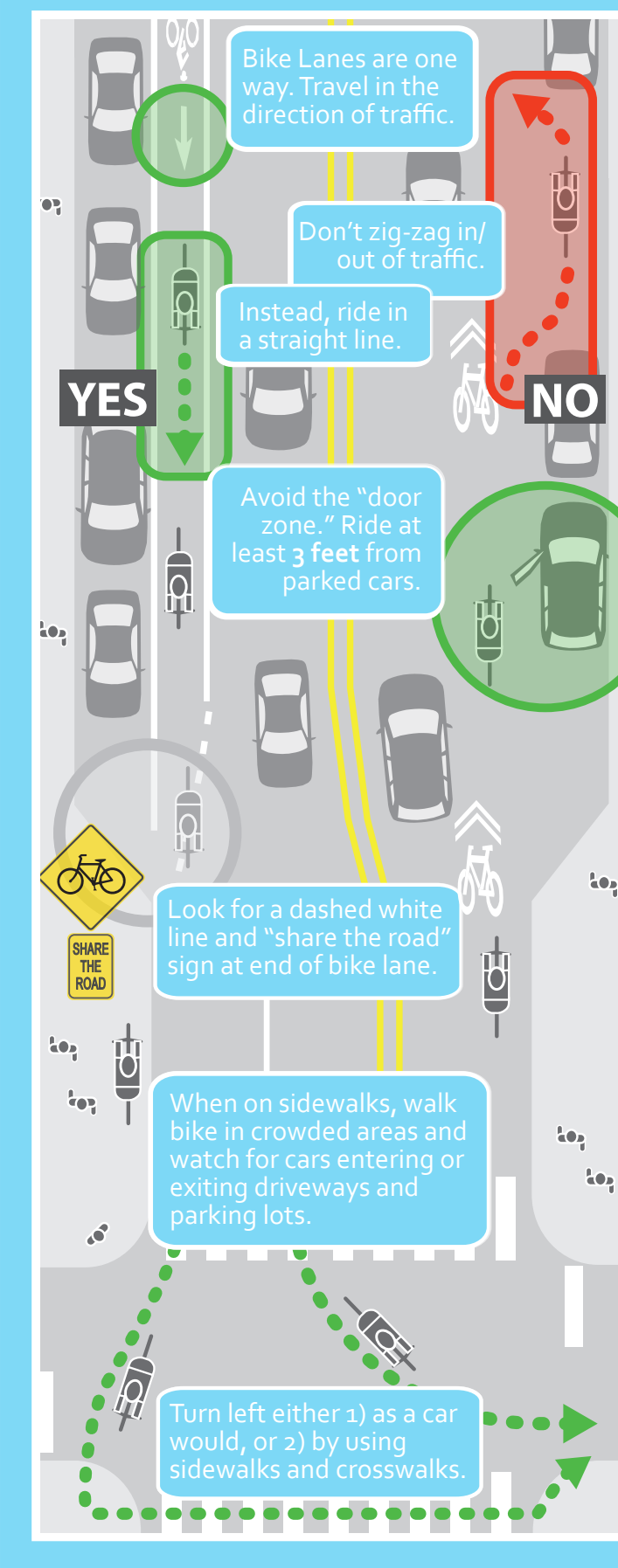
Legend

- Bike Lane**
 - Buffered*
 - Protected Cycle Track**
- Neighborhood Connectors*****
 - Sharrows
 - Signed Route
- Off-street Path**
- Satisfactory Route**
See county map for definition
- Destinations**
 - MICHIGAN STADIUM
 - West Branch Library
 - Ice Rink
- B2B**
Border to Border (B2B) Trail Route
- Off-street path
- On-street section
- Schools
- College/University
- Parks/Open Space

*Buffered Bike lanes have more separation between bicyclists and vehicles than standard painted bicycle lanes.
 ** Protected Bike lanes or cycle tracks are one-way or two-way facilities with vertical barriers between the bike lane and the vehicle lane.
 *** Neighborhood Connectors guide cyclists through neighborhoods, connect them to destinations, and indicate how to cross gaps in the bicycle facility network.



HOW TO RIDE SAFELY



SHARE THE ROAD

The shared use symbol, or sharrow, indicates to both motorists and cyclists that cars and bikes should share the roadway. It is usually placed on the roadway when there is no room for a separate bike lane.

IT'S THE LAW

Obey Traffic Laws, Signs and Signals
Bicyclists have the same rights and responsibilities as motorists. (M.V.C. 257.657)

Use Hand Signals
Signal your intent to turn with the proper hand signals shown below. (M.V.C. 257.634(1))

Use Lights at Night
White headlight visible from 500 feet, red rear reflector or light visible from 600 feet. (M.V.C. 257.662)

Riding on Sidewalks
You are an invited guest in the pedestrian space. Slow down, announce yourself when passing, and always yield to pedestrians. (M.V.C. 257.660c)

SIGNAL TURNS



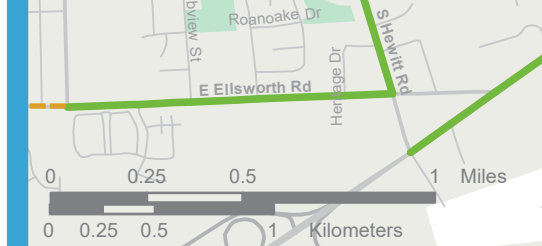
WEAR A HELMET

Wear helmet over the forehead, above the eyebrows, not tilted back. It should not move around while riding.

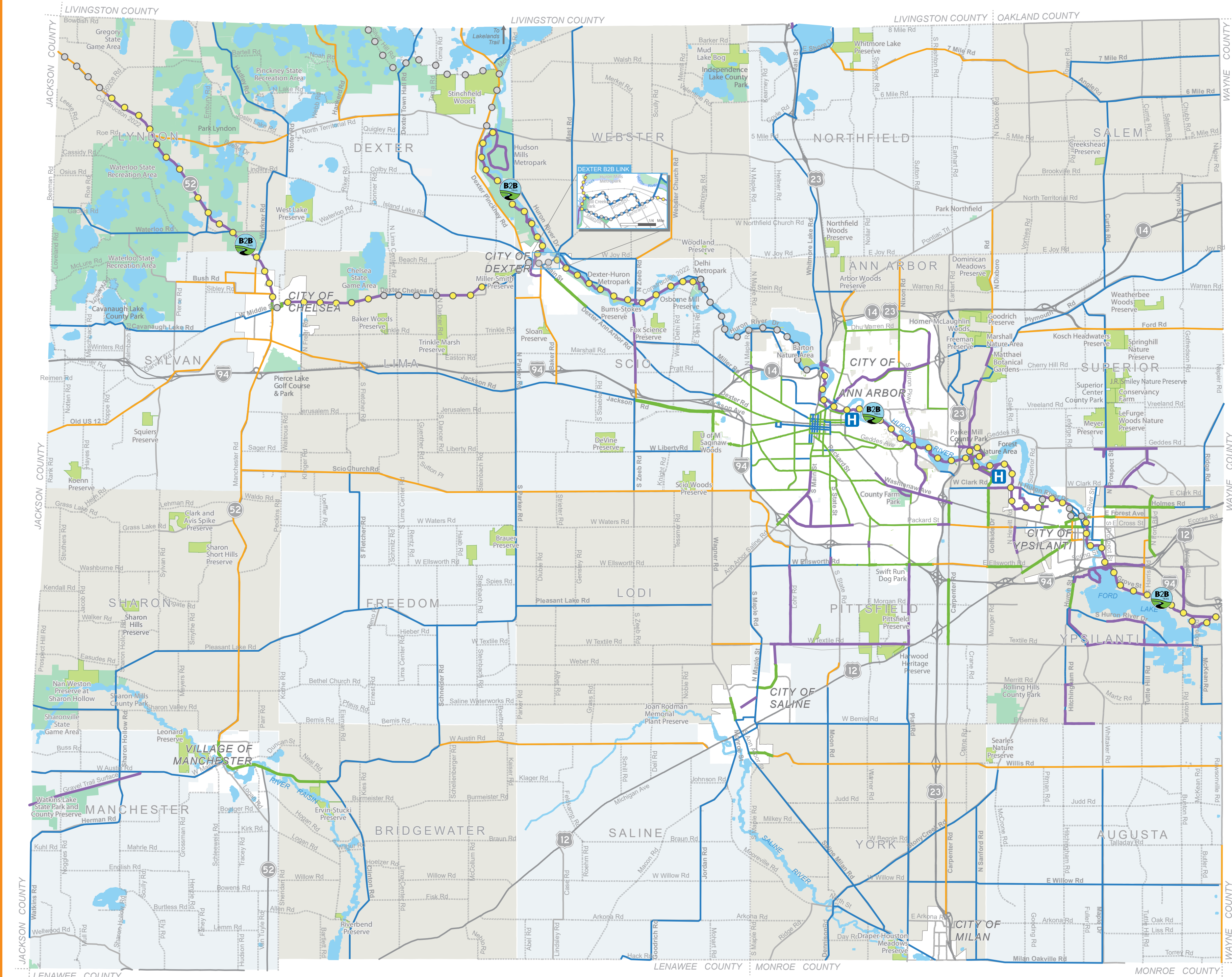
BE VISIBLE

Wear light-colored or reflective clothing, especially at night.

CITY OF YPSILANTI



WASHTENAW COUNTY BIKE MAP



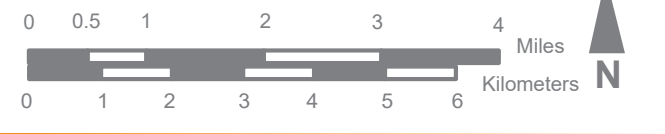
Legend

- Bike lane
- Preferred Route
- Satisfactory Route
- Unpaved Road
- Off-street Path (Paved)
- Border to Border (B2B) Trail Route
 - Off-street Path
 - On-street Section
- Park
- Nature Preserve

*Bikes excluded from preserve trails. Bike parking provided at entrance.

Preferred Routes
Roads judged more suitable due to greater lane width, lower traffic volumes, and/or a paved shoulder.

Satisfactory Routes
Usable but less suitable due to narrower lanes and/or higher traffic volumes.



Online Resources:

- Ann Arbor Cyclist Information: a2gov.org/bike
- Border to Border Trail: b2btrail.org
- City of Ann Arbor Parks and Recreation: a2gov.org/parks (734) 794-6230
- Washtenaw County Parks and Recreation: washtenaw.org/b2b (734) 971-6337
- Washtenaw Bicycling & Walking Coalition: wbwc.org
- Ann Arbor Bicycle Touring Society: aabts.org
- Report a Problem: Ann Arbor (A2 Fix It): a2gov.org/a2fixit
- Report a Problem: Washtenaw: wcroads.org/residents/report-an-issue
- Report a Problem: Ypsilanti: cityofypsilanti.com/ypsilconnect

Map produced by:

BIKE MAP
CITY OF ANN ARBOR & WASHTENAW COUNTY

2022 INCLUDING... **B2B TRAIL** AND YPSILANTI

FREE!
\$3 value