

AMCO

MANUFACTURING, INC.



Maintenance-Free
Gang Bearings



F41 & J41 WHEEL OFFSET HARROWS

Cutting through tough residue?

AMCO has the answer. Our general-purpose Wheel Offset Harrows, the F41 (9" blade spacing) and the J41 (10½" spacing), are designed specifically for cutting and sizing residue, eliminating clumps, and breaking up compacted soil. Versatile and rugged, the F41 and the J41 are incredibly effective at preparing the ideal seedbed.

- › Disc gangs feature maintenance-free bearings with three-year warranty; bearings eliminate possibility of contamination and need for re-lubrication
- › 22" x ¼" cutout blades; J41 features a backup disc behind the front right blade, providing extra surface area to support the cutting blade
- › Adjustable tongue with jack and adjustable gang angle (17 to 23 degrees) on both front and rear gangs
- › Standard heavy-duty scrapers with replaceable high-carbon blades free blades of soil buildup
- › 15" x 6" wheels with 6-bolt wheel hubs
- › 4" x 8" hydraulic cylinder (3,000 PSI) with hoses to tractor
- › Optional upgrades for rocky and woody conditions include spring-loaded shock absorber gang with 24" x ¼" cutout blades
- › Optional equipment includes feathering blades with scraper for the rear gang
- › Includes safety chains, slow-moving placard, and light kits for added security
- › Highly durable powder-coated finish

FEATURES



PRODUCT PERFORMANCE GUARANTEE—Repair, Replace, or Refund: AMCO Guarantees Performance. The best tillage tools deserve the best guarantee. The AMCO guarantee is simple. If, during the first 30 days, your AMCO equipment doesn't perform as promised, and if we don't make it perform in a reasonable amount of time, we'll repair it, replace it, or buy it back.



Above: Five tongue settings enable left and right offset positions.

Right: Spring leveling system absorbs shock when the disc is pulled over uneven terrain.



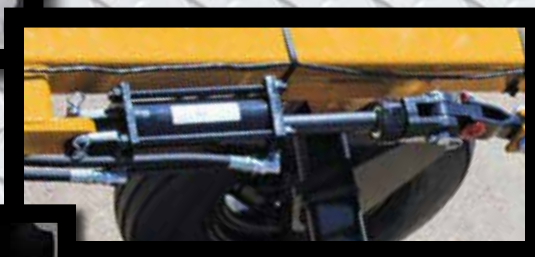
Below: Transport lockout pin ensures safe road travel.



Above: Adjustable gang angle (17 to 23 degrees) on front and rear gangs to adapt to any soil condition.



Above: Steel bearing spacer will not break or dent. The replaceable 3/16" x 6 1/2" x 8" high-carbon steel scrapers free blades of soil buildup.



Left: High-carbon, cold-rolled 1 1/2" steel square axles ensure blades rotate with axles even if gangs settle.



F41 & J41 Wheel Offset Harrow Models

Model	Cutting Width	No. of Discs	No. of Bearings	Approx. Engine HP Required	Approx. Weight lbs*
F41 Model					
F41-1822	6'9"	18	6	68-88	2,428
F41-2022	7'6"	20	6	75-95	2,568
F41-2222	8'3"	22	8	81-101	2,801
F41-2422	9'0"	24	8	88-108	2,922
F41-2622	9'9"	26	8	95-115	3,036
F41-2822	10'6"	28	8	101-122	3,257
J41 Model					
J41-1624	7'0"	16	6	68-88	2,592
J41-1824	7'10"	18	6	74-95	2,739
J41-2024	8'8"	20	6	81-101	2,905
J41-2224	9'6"	22	8	88-108	3,154
J41-2424	10'4"	24	8	95-115	3,345

*To calculate weight/blade, divide the approximate weight of the model by the number of disc blades. Specifications for all models subject to change without notice.

AMCO

MANUFACTURING, INC.

800 S. Industrial Parkway
P. O. Box 1107
Yazoo City, MS 39194

Toll free: 800-748-9022
662-746-4464
Fax: 662-746-6825

Web: www.amcomfg.com
Facebook: www.facebook.com/AMCOManufacturingInc
Email: sales@amcomfg.com



**TOUGH
TILLAGE
TOOLS**