

This Owner's Manual is provided and hosted by [Appliance Factory Parts](#).



# Bissell 7100 Owner's Manual

[Shop genuine replacement parts for Bissell 7100](#)



[Find Your Bissell Vacuum Cleaner Parts - Select From 376 Models](#)

----- Manual continues below -----

# Zing™



## USER'S GUIDE 7100 SERIES

3 Safety Instructions

4 Product View

5 Assembly

5-7 Operations

7-8 Maintenance and Care

9 Troubleshooting

10 Consumer Services

11 Replacement Parts

12 Warranty



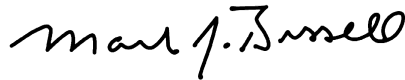
## Thanks for buying a BISSELL Zing™ Canister Vacuum

We're glad you purchased a BISSELL Zing™ canister vacuum. Everything we know about floor care went into the design and construction of this complete, high-tech home cleaning system.

Your BISSELL canister vacuum is well made, and we back it with a limited one year warranty. We also stand behind it with a knowledgeable, dedicated Consumer Services department, so, should you ever have a problem, you'll receive fast, considerate assistance.

My great-grandfather invented the floor sweeper in 1876. Today, BISSELL is a global leader in the design, manufacture, and service of high quality homecare products like your BISSELL canister vacuum .

Thanks again, from all of us at BISSELL.



**Mark J. Bissell**  
President and Chief Executive Officer

# IMPORTANT SAFETY INSTRUCTIONS

**When using an electrical appliance, basic precautions should be observed, including the following:**

## READ ALL INSTRUCTIONS BEFORE USING YOUR CANISTER VACUUM.

Always connect to a polarized outlet (left slot is wider than right). Unplug from outlet when not in use and before conducting maintenance.

### **WARNING:** To reduce the risk of fire, electric shock, or injury:

- Do not leave cleaner when it is plugged in.
- Unplug from outlet when not in use and before servicing.
- Do not use with damaged cord or plug.
- To unplug grasp plug not cord.
- Do not pull or carry by cord, use cord as a handle, close door on cord, pull cord around sharp corners, run cleaner over cord, or expose cord to heated surfaces.
- Hold plug when rewinding the cord onto the reel. Do not allow the plug to whip when rewinding.
- Do not use cleaner if it has been dropped, damaged, left outdoors or dropped into water. Have it repaired at an Authorized Service Center.
- Do not allow children to use as a toy.
- Do not use outdoors or on wet surfaces.
- Do not handle cleaner or plug with wet hands.
- Do not put any object into openings, use with blocked opening, or restrict air flow.
- Do not use without dust bag and/or filters in place.
- Do not allow hair, loose clothing, fingers or body parts to get near openings or floor brush in the appliance.
- Do not pick up hot coals, cigarette butts, matches or any hot, smoking, or burning objects.
- Do not pick up hard or sharp objects such as glass, nails, screws, coins, etc.
- Do not pick up flammable or combustible materials (lighter fluid, gasoline, kerosene, etc.) or use in the presence of explosive liquids or vapor.
- Do not unplug by pulling on cord.

- Do not pick up toxic material (chlorine bleach, ammonia, drain cleaner, etc.).
- Do not use in an enclosed space filled with vapors given off by oil base paint, paint thinner, some moth proofing substances, flammable dust, or other explosive or toxic vapors.
- Do not use for any purpose other than described in this User's Guide.
- Always turn off this appliance before connecting or disconnecting vacuum hose.
- Use only manufacturer's recommended attachments.
- Use only on dry, indoor surfaces.
- Keep openings free of dust, lint, hair, etc.
- Keep appliance on a level surface.
- Turn off all controls before plugging or unplugging cleaner.
- Be extra careful when cleaning stairs.
- Close attention is necessary when used by or near children.

## SAVE THESE INSTRUCTIONS FOR FUTURE USE

## THIS APPLIANCE HAS A POLARIZED PLUG.

To reduce the risk of electric shock, this appliance has a polarized plug (one blade is wider than the other). This plug will fit in a polarized outlet only one way. If the plug does not fit fully in the outlet, reverse the plug. If it still does not fit, contact a qualified electrician to install a proper outlet. Do not change the plug in any way.

This model is for household use only.

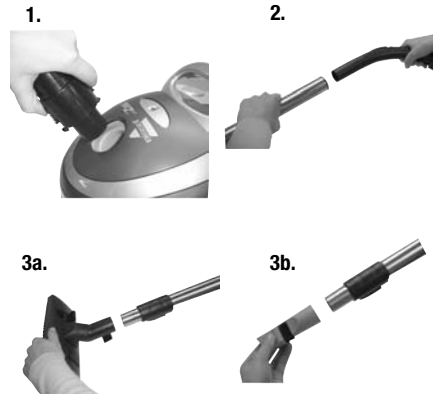
## Product view



## Assembling your vacuum

1. Connect swivel hose by squeezing both tabs and placing in opening on canister.
2. Connect telescoping wand to handle end of hose. Twist slightly to tighten.
3. Connect floor nozzle or combination tool to end of telescoping wand. Twist slightly to tighten.

**CAUTION:**  
Do not plug in your vacuum until you are familiar with all instructions and operating procedures.



## Operations

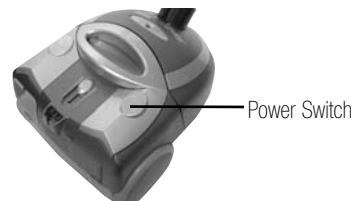
### Power cord

The power cord is located in the rear of the unit. Pull out the power cord gently, watching for the yellow and red lines. The yellow line indicates that you are getting close to the end. The red line indicates the end of the usable cord. Do not pull the cord out beyond the red line.

Your vacuum is equipped with an automatic cord rewind. When cleaning is finished, switch off the power and grasp the plug to disconnect from the electrical outlet. Hold the plug and press the cord rewind button to rewind the cord automatically.

### Power switch

Turn the power on or off by pushing or stepping lightly downward on the power switch (⊙).

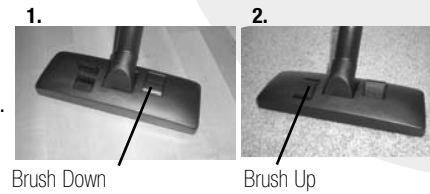


## Operations

### Special tools

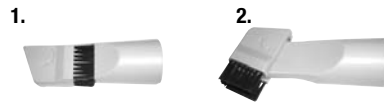
#### Floor nozzle

1. Push brush down button to clean bare floors.
2. Push brush up button to clean rugs and carpets.



#### Combination crevice/dusting brush tool

1. Rotate brush portion down to use as a crevice tool.
2. Rotate brush portion up to use as a dusting brush.



### Variable suction power control

The variable suction power control is located on the top of the canister. Slide the control toward the wider bars for maximum suction. Slide the control toward the narrower bars to reduce energy consumption and suction for lightly soiled areas or delicate fabrics.



## Operations

### Air Flow Regulator

Open the air flow regulator by sliding the button in the direction of the arrow to an open position to reduce suction for fabrics such as draperies.

Close the air flow regulator by sliding the button to the closed position for full suction.



### Bag Change Indicator

If the bag change indicator turns to a red color while you are cleaning, the dust bag needs to be replaced. The bag may appear to be full or only partially full depending upon the type of debris picked up. Fine particles can block the airflow in the bag and reduce suction before the bag is full. If the bag change indicator continues to display the red color even after changing the dust bag, turn the vacuum off and check for a clog in the hose or tools.

### Storage Position

Located at the top rear side of the canister is a nozzle support that can be used to park the nozzle during pauses in cleaning, while transporting the cleaner or while in storage.



## Maintenance and care

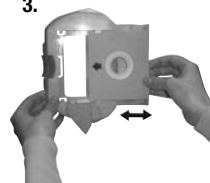
### Dust Bag Replacement

1. Unplug the vacuum from electrical outlet.
2. Open the dust bag compartment by lifting up on the latch on the door at the front of the canister.
3. Lift out the bag holder and bag. Slide bag out of holder and discard used bag.
4. Slide new bag into holder. Place holder and new bag into bag compartment making sure entire bag is below seal gasket.
5. Close dust bag compartment door and press down gently until it locks into place.

2.



3.





## Maintenance and care

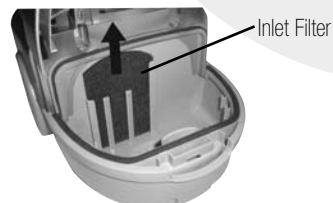
### Filter Maintenance or Replacement

#### Inlet Filter

1. Unplug the vacuum from electrical outlet.
2. Open the dust bag compartment by lifting up on the latch on the door at the front of the canister. Lift out the bag holder and bag.
3. Remove filter and clean by washing in warm water with a mild detergent if desired. Allow filter to dry completely before reinstalling. If filter is torn, replace with a new filter.

**NOTE: The filter should be placed so the thicker grey foam side is visible.**

4. Place bag holder and bag back into bag compartment making sure entire bag is below seal gasket.
5. Close dust bag compartment door and press down gently until it locks into place.

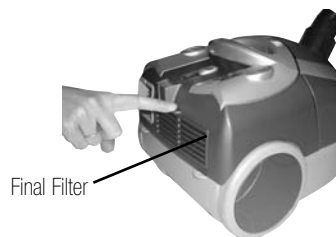


#### Final Filter

1. Unplug the vacuum from electrical outlet.
2. Remove filter door and filter by pressing down on tab at the back of the canister.
3. Remove filter and clean by washing in warm water with a mild detergent if desired. Allow filter to dry completely before reinstalling. If filter is torn, replace with a new filter.

**NOTE: The filter should be placed so the thicker grey foam side is visible.**

4. Reinstall filter and door by aligning notches at the bottom and pressing tab back into the canister.



## Troubleshooting

### Vacuum cleaner won't run

#### Possible causes

1. Vacuum cleaner is not plugged in
2. Household fuse/circuit breaker

#### Remedies

1. Check electrical plug
2. Check/replace fuse or circuit breaker

### Decreasing suction or no suction

#### Possible causes

1. Floor nozzle, flexible hose, or extension wand is blocked
2. Filters are dirty
3. Dust bag is full
4. Crack or hole in flexible hose
5. Hose is clogged
6. Air flow regulator or variable suction control is on low suction setting

#### Remedies

1. Remove each part and check for blockages
2. Check both filters and clean or replace as needed
3. Replace with new dust bag
4. Check hose and replace if needed
5. Remove hose, check for a clog and clear
6. Check for correct setting

### Cord does not rewind fully

#### Possible causes

1. Cord may be twisted or wound unevenly

#### Remedies

1. Gently pull the cord out and rewind

Other maintenance or service not included in the manual should be performed by an authorized service representative.

**Thank you for selecting a BISSELL product.**

**Please do not return this product to the store.**

**For any questions or concerns, BISSELL is happy to be of service.  
Contact us directly at 1-800-237-7691.**

## **BISSELL Consumer Services**

For information about repairs or replacement parts, or questions about your warranty, call:

**BISSELL Consumer Services**  
**1-800-237-7691**

Monday - Friday 8 a.m. — 10 p.m. ET

Saturday 9 a.m. — 8 p.m. ET

Or write:

BISSELL Homecare, Inc.

PO Box 3606

Grand Rapids MI 49501

ATTN: Consumer Services

Or visit the BISSELL website - **[www.bissell.com](http://www.bissell.com)**

When contacting BISSELL, have model number of cleaner available.

Please record your Model Number: \_\_\_\_\_

Please record your Purchase Date: \_\_\_\_\_

**NOTE: Please keep your original sales receipt. It provides proof of purchase date in the event of a warranty claim. See Warranty on page 12 for details.**



## Replacement parts - BISSELL vacuum

You may purchase parts from your retailer, by calling BISSELL Consumer Services or by visiting our website.

Item	Part No.	Part Name
1	3210	Maintenance Kit (5 bags, 1 Inlet Filter, 1 Final Filter)
2	203-7056	Combination Crevice/Dusting Brush Tool
3	203-7059	Floor Nozzle
4	203-7057	Flexible Hose
5	203-7058	Telescoping Extension Wand



## Warranty - BISSELL Zing™ Canister Vacuum

This warranty gives you specific legal rights, and you may also have other rights which may vary from state to state. If you need additional instruction regarding this warranty or have questions regarding what it may cover, please contact BISSELL Consumer Services by E-mail, telephone, or regular mail as described below.

### Limited One Year Warranty

Subject to the **\*EXCEPTIONS AND EXCLUSIONS** identified below, upon receipt of the product BISSELL Homecare, Inc. will repair or replace (with new or remanufactured components or products), at BISSELL's option, free of charge from the date of purchase by the original purchaser, for one year any defective or malfunctioning part.

See information below on "If your BISSELL product should require service".

This warranty applies to product used for personal, and not commercial or rental service. This warranty does not apply to fans or routine maintenance components such as filters, belts, or brushes. Damage or malfunction caused by negligence, abuse, neglect, unauthorized repair, or any other use not in accordance with the User's Guide is not covered.

### If your BISSELL product should require service:

Contact BISSELL Consumer Services to locate a BISSELL Authorized Service Center in your area.

If you need information about repairs or replacement parts, or if you have questions about your warranty, contact BISSELL Consumer Services.

#### Website or E-mail:

[www.bissell.com](http://www.bissell.com)

Use the "Customer Services" tab.

#### Or Call:

BISSELL Consumer Services

1-800-237-7691

Monday - Friday 8 a.m. - 10 p.m. ET

Saturday 9 a.m. - 8 p.m. ET

#### Or Write:

BISSELL Homecare, Inc.

PO Box 3606

Grand Rapids, MI 49501

ATTN: Consumer Services

**BISSELL HOMECARE, INC. IS NOT LIABLE FOR INCIDENTAL OR CONSEQUENTIAL DAMAGES OF ANY NATURE ASSOCIATED WITH THE USE OF THIS PRODUCT. BISSELL'S LIABILITY WILL NOT EXCEED THE PURCHASE PRICE OF THE PRODUCT.**

**Some states do not allow the exclusion or limitation of incidental or consequential damages, so the above limitation or exclusion may not apply to you.**

**\*EXCEPTIONS AND EXCLUSIONS FROM THE TERMS OF THE LIMITED WARRANTY  
THIS WARRANTY IS EXCLUSIVE AND IN LIEU OF ANY OTHER WARRANTIES EITHER  
ORAL OR WRITTEN. ANY IMPLIED WARRANTIES WHICH MAY ARISE BY OPERATION  
OF LAW, INCLUDING THE IMPLIED WARRANTIES OF MERCHANTABILITY AND  
FITNESS FOR A PARTICULAR PURPOSE, ARE LIMITED TO THE ONE YEAR DURATION  
FROM THE DATE OF PURCHASE AS DESCRIBED ABOVE.**

**Some states do not allow limitations on how long an implied warranty lasts so  
the above limitation may not apply to you.**



©2007 BISSELL Homecare, Inc.  
Grand Rapids, Michigan  
All rights reserved. Printed in Korea  
Part Number 110-4001  
Rev 5/07  
Visit our website at:  
[www.bissell.com](http://www.bissell.com)

