

JEES MCCRRAE

Ontario

A PLACE OF ROCKS AND HILLS



*Atali... the winds of change continue
strong in this high place...*



Digitized by the Internet Archive
in 2012 with funding from
University of North Carolina at Chapel Hill

<http://archive.org/details/ontaroga1993lees>

Anitsalaji

"THE CHEROKEES"

Ontaroga

To The Ancient Indian It Meant A Place Of Rocks & Hills

"The mountain surrounded hillsides, on which the little North Carolina village of Banner Elk is located, were once known to the Indians as a choice hunting ground. Here, if we are to believe the reports of the old settlers, the Indians built their camp fires for a time under the spreading chestnut and majestic hemlock and killed their winter supply of bear meat, venison and small game.

"This spot, which was too cold for permanent settlement, made an excellent hunting ground. It was well guarded by mountain peaks from which sentinels could watch for an approaching enemy or rival hunters. Through its valley flowed the sparkling waters of many mountain streams and from under its rocks bubbled more than one renowned spring. Native to its soil were the sweet hemlock and white pine, that made both beds and fuel plentiful; there were chestnuts, beech nuts, the wild cherry, servis, blackberries, wild strawberries, blueberries, assuring the camper of provisions. Above all, the forests were the homes of small game and birds, especially pheasants, quail, wild turkeys and ducks; and the dark pools of the streams flashed with speckled beauties and rainbow trout, which were far superior to the fish of the slow and muddy water of the plain. Many were the campfires that mingled their smoke with the green tips of the

Property of Lees-McRae College Archives

hemlock; many were the pointed arrows that whistled above the tangled mass of rhododendron.

"Only a few reminders of those happy hunting days are left. One, the Elk River, which has its source on Grandfather Mountain and flows through the valley in which Banner Elk is situated, still bears the name of the herds that once drank from its waters. Another stream, the Shawneehaw (maple groves), calls to mind some of the hunters who camped on its banks. The mountain, now known as Beech from the many beech trees that cover its sides, was called by the Indians 'Klonteskah' or 'pheasant,' so renowned was it for the birds in its forest. Another evidence of the hunting days of the Indians is the absence of Indian relics that show domestic life, and the abundance of arrowheads that have been found from the banks of Elk River to the topmost pinnacle of Beech Mountain. Some of the arrowheads are large enough to have been used in hunting large game, but the greater number are the small flints that cut short the flight of a pheasant or quail.

"In the years that the arrowheads have lain unused among the rocks, gunpowder and shot have taken their place; the hillsides have been shorn of their giant trees, the noiseless Indian trail has been replaced by the rushing highway. With the advance of civilization, the hunter's game has vanished. Here, as in all America, the pheasant, the quail, the grouse, as well as the larger game, are becoming extinct."

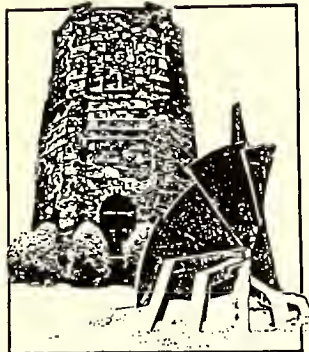
—The Pinnacles, July, 1931

winds of change continue strong in this high place

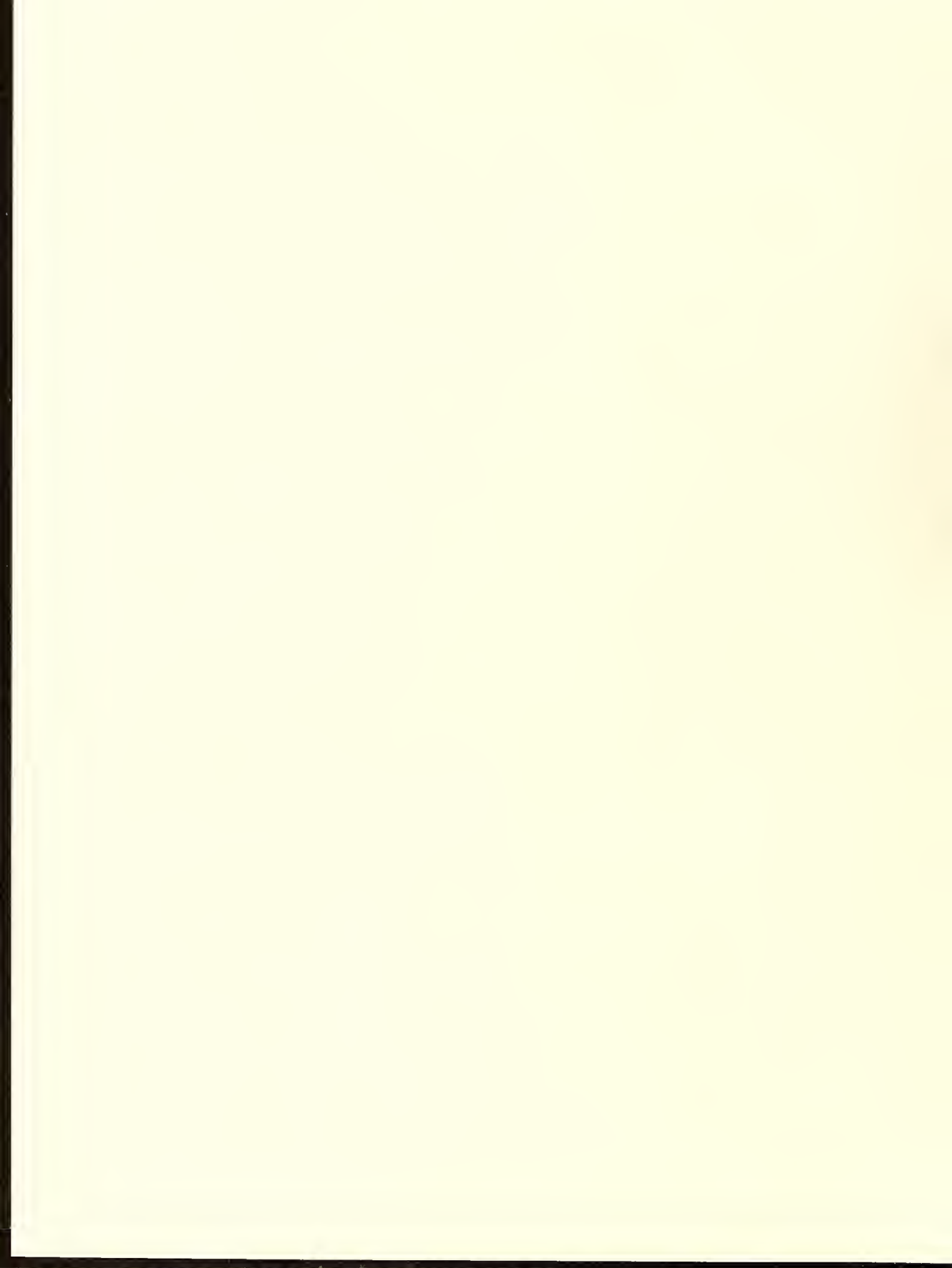
"The winds of change continue strong in this high place. The population of the area is now utterly changed and with all the change Lees-McRae has changed, too, and will continue to change. The only question is how to remain true to its sense of mission.

"I speak as a friend of the community and the region . . . and, of course, I speak as a friend of Dr. Bradford Crain, distinguished graduate of Berea College, humanist, teacher, scholar, and academic leader whose many distinguished qualities have led him to his present achievement.

"This institution has seen almost epochal changes during its lifetime. The boarding school, which was the foundation for the establishment of the college, was here before Avery County was created. In the early days before the founding, good education in this area was not readily available . . . yet there were undaunted souls who were challenged by what they found here . . . Edgar Tufts was one of these. He set aglow a sacred flame by building a church and a school."



Blending the old and the new



Ontaroga

This once tranquil community was transformed suddenly into a bustling resort area, and, the winds of change blew strong in this high place ...

TO THE ANCIENT INDIAN IT MEANT
a place of rocks and hills



*"It would be no small advantage if every college were thus located at the base of a mountain ... Some will remember, no doubt, not only that they went to the college, but that they went to the mountain."
--Henry David Thoreau*

Each visitor to Banner Elk and Lees-McRae College feels an overwhelming sense of discovery upon arrival, the discovery of a special place for renewal and strength. And that has been a constant theme since the *Christian Science Monitor* first described Banner Elk as "a perfect town" in the mid-thirties and a few years later *Reader's Digest* writer described Lees-McRae's campus at over 4,000 feet in elevation the "Campus in the Clouds."



After being bestowed with the mantle "the fastest-growing resort area of the Southeast," Banner Elk and the surrounding High Country communities have done much to enhance and further that image. During the summer months there are challenging golf courses, whitewater rafting adventures, trout fishing, hiking, horseback riding, tennis, and many other opportunities all air-conditioned by the cool Blue Ridge Mountain breezes. As fall arrives in the mountains with the leaves providing a panoramic splendor of vivid colors and designs, residents and visitors prepare for the winter sports of skiing, snowboarding and cross-country skiing at the five resorts within 45 minutes drive of Banner Elk. But more than outdoor activities, the Blue Ridge Mountains provide both a sense of perspective and a chance for renewal of mind, body, and soul. The benefits of the invigorating mountain climate and the atmosphere of a friendly little one stoplight college town are available whether the stay is a four-year education at Lees-McRae College or a weekend getaway.

Atali

THESE MOUNTAINS... *this high*

Lees-McRae has continually distinguished itself not only by adapting to the constant winds of change, but by harnessing and channelling those winds into the mission that defines the college. Since its ambitious beginnings at the turn of the century, the wellspring of strength at Lees-McRae has been its mission. A mission that has provided a sure and steady guide through nearly a century of presidents, trustees, faculty, and staff who have served and will continue to serve the college. A mission not only to meet the changing needs of its students, but to anticipate those needs and act quickly and effectively.

To paraphrase College President Dr. Bradford L. Crain, when we look back at the miles and miles that the institution has come since 1900, we recognize that it is the challenge to embrace change, to become current and to meet ever-changing needs, that defines the college as it moves to the 21st century. But just as Lees-McRae is ever changing, it is also ever the same. Edgar Tufts very succinctly said that the objective of his ministry was to meet unmet human needs. The objective of

Lees-McRae College has been to particularize that general statement, "to meet unmet educational needs," both for young people here in the mountains and now, to expand our efforts, to have that mission encompass the entire Southeast and even far beyond the 29 states and several foreign nations typically represented in our student body. So at Lees-McRae, the expression "ever changing, ever the same" is more than just a metaphor for what we do: it is a summary of both our tradition and our vision.

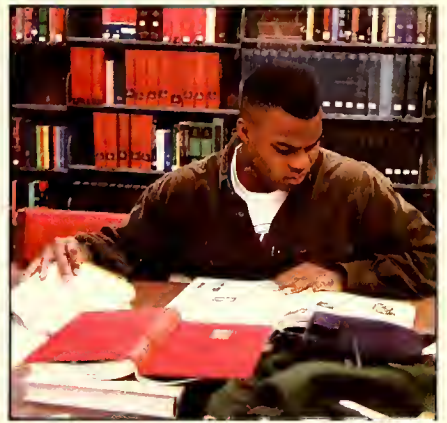
As a nineteenth century writer once remarked, "If you leave a thing alone, you leave it to a torrent of change," and the philosophy perhaps best describes Lees-McRae's "hands-on" approach to the entire process of providing a quality education for each student.



Unole **"WIND"**

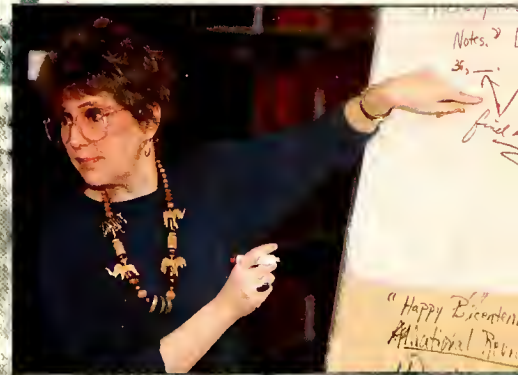
Winds of Change

lace...



In an effort to help students adapt to and overcome the many challenges of academic work on the college level, the Lees-McRae Division for Academic Advancement has continued to seek new ways to best serve the student body. The division is designed to offer extra guidance to any student who shows the desire to learn and the willingness to work hard.

"Initially the division offered help to students in basic study skills, along with training and tutoring in specific disciplines," said Pat Smith, Chair of the Division. "Today we offer the same services, but have expanded to include counseling in how to identify the student's learning style and how to adapt to various styles of instruction."



Smith, who helped begin what was then known as the Academic Skills Clinic 25 years ago, has overseen some 15,000 contacts with students over the past 10 years and spoke of the rewards not only for the students but for the staff. "One of our greatest rewards is helping a student who is below average in one area become above average and watching the average student excel."

continue strong in this high place...

UNOLE "WIND"

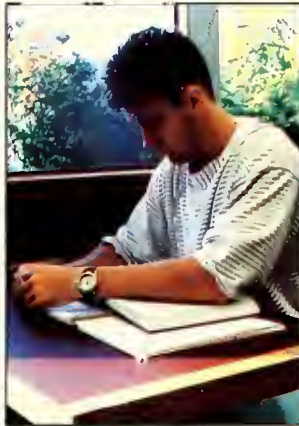
"Winds of Change" open up an electronic pathway to the world through computer technology. "You know the benefits of a small college: its intimate community, the close connection between faculty and students, the commitment to education. But more than anything else, a small college is a place where you can learn to think. Learning to think begins as a challenge."

--Acting Chairperson of the National Endowment for the Arts Dr. Anne Imelda Radtce during an opening convocation address at Lees McRae.

Helping students "learn to think" is central to the Lees-McRae purpose. Foremost among the hallmarks of a Lees-McRae graduate is "the ability to think independently, critically and justly in solving problems," and the increased use of computers has been instrumental in developing critical thinking and learning at Lees-McRae College. The groundbreaking first step was the installation of a computer network on campus that will ultimately link all students, faculty, and staff into one system of communication. The network will allow for "computer-enhanced instruction" which will enable professors to create new methods of instruction in the various academic disciplines. The next step was the opening of the Pittman Business and Communications Center in the Bowman Science Building.



This facility, dedicated in the fall of 1992, was proposed by faculty members to provide students with learning opportunities that will prepare them to compete in the marketplace



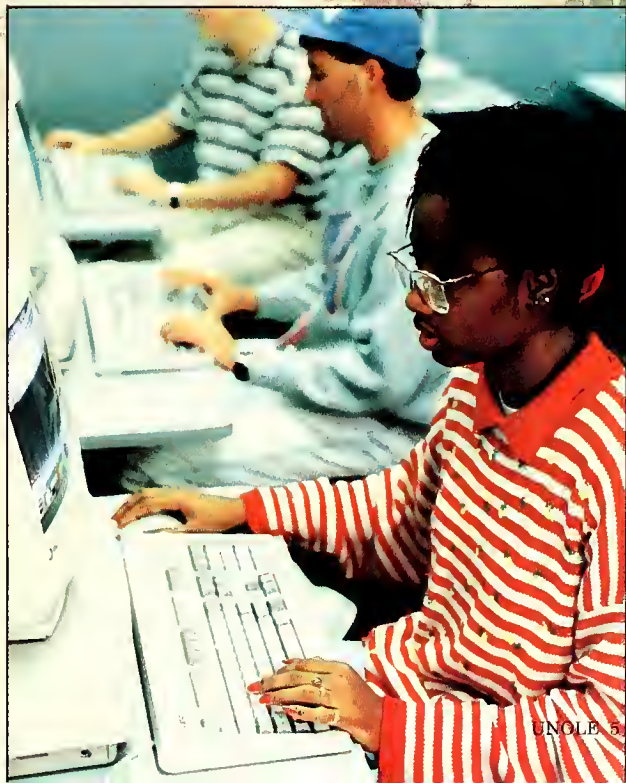
and succeed on the job. Problem-solving, decision-making, analytical and communication skills are all essential foundations of the Lees-McRae experience and according to Lees-McRae President Dr. Bradford L. Crain, the Pittman Center is designed





An example of that "future growth" that Crain mentioned happened only a couple of months after the dedication of the Pittman Center when Lees-McRae was linked with a vast network of information by way of a grant from the National Science Foundation. Some describe the network connection as "an electronic pathway to the world" that links Lees-McRae with global communications networks called "superhighways of information." Lees-McRae's Network Systems Analyst Kathy Burton praised the network link for "giving students here access to information that has only been available in the past to students at much larger universities."

to "establish a solid foundation for future growth in the business and communication curricula, serve as a resource for other courses which integrate business and communications concepts, and serve as a community resource for area residents and businesses." It is, moreover, "a place where students and faculty can come together to understand, in a new and exciting way, how data are interpreted and the way that data are actually taught," stated Crain.



Checononda "HILLS ON HILLS"



"Winds . . ." Take Learning Outside the Classroom

In an effort to give its students more "real world" experience Lees-McRae has required students in many majors to participate in an internship program. "A good internship gives the student practical experience to carry into the real world," said Dr. Michael Joslin, an Associate Professor of English at Lees-McRae. Joslin also feels that a student gains not merely good work experience, but an edge on other students with similar qualifications. "A good internship distinguishes one resume from the rest," says Joslin, "which is an important factor with the number of college graduates today and the number of jobs that are available."



Students are able to choose their own internship according to their major, field of study and personal interest. Several local businesses offer positions for interns although some choose to work out of town. Lees-McRae graduate Priscilla Ellis chose to do her internship for Bruce Hospital in Florence, South Carolina, and during her time on the job gained valuable training. "I feel that my internship better prepared me for what lies ahead after graduation. I realized my strengths and weaknesses and what kind of job I am best suited for."

For current senior communications major Alex Dewey, an internship at a local radio station gave him some perspective on what he has learned from Lees-McRae. "I found myself in the position where I could begin applying what I had learned at Lees-McRae. I am one hundred percent behind internships," said Dewey. "You get to try out what you've learned in the real world."



Joe Jenkins takes part in campus beautification project during "Earth Day" activities.

Winds . . . "Take LMC Professors Around the Globe

Just as Lees-McRae began forming a support system for both international students and faculty members, several professors have met the challenge of traveling abroad to such destinations as Kuwait, Australia, Britain, and Ireland. Lees-McRae Associate Professor of English Mary White has been selected by the National Council on U. S.-Arab Relations to receive a Malone Fellowship for a study seminar to take place in Kuwait and Syria during the summer of '93. During the program, Fellows participate in briefings, site visits, and other experiences that help to deepen their insight into Arab culture and history, contemporary Arab society, Islam, and a range of issues pertaining to modernization and development in the host countries. Upon her return, White will be available to serve as a resource person for courses at Lees-McRae in history, religion, and mythology, among others.

Assistant Professor of History Dr. Wayne Morris spent the spring in Australia doing research on what he hopes will eventually be a book concerning the ANZUS Treaty between the United States, Australia, and New Zealand. Morris explained that the alliance was formed in the years following World War II and included a strong U. S. military presence in those two countries along with the sharing of military aid and intelligence. But, according to Morris, in recent years the spirit of the alliance has broken down despite still appearing intact on paper.



The Center for Communications' Julie Sellers (left) works with Lees-McRae College's Kathy Burton during a network training session at the Center for Microelectronics Communications Supercomputing (MCNC) in the Research Triangle Park. (Photo by Jay Mangum Photography)



An expert in the field of American foreign policy, Morris already has another manuscript in the works on U. S.-Soviet relations during the 1930's which he hopes to have published by late 1993 or early 1994. Morris, who has been teaching at Lees-McRae since 1990, received his Ph.D. in History of American Foreign Relations from the University of Tennessee.

Through the Cooperative Center for Study in Britain, Lees-McRae Associate Professor for Business Susie Sheffield has taught in Great Britain, as will Associate Professor for Biology Dr. Eugene Spears, Jr. Sheffield was the first

professor from Lees-McRae to teach in Britain as a part of the CCSB program. She taught "Financial Reporting in the International Environment" during the 1992-93 winter break. Her course explored the London financial district, and included tours of Lloyds of London, a visit to the London Stock Exchange, and a tour of the multi-national corporation, among other activities. Spears will teach a class entitled "Irish Ecosystems" over the summer. The program will be based in Dublin. According to Spears, "The richness and diversity of Irish ecosystems have been shaped



"We live East of Eden, and faith will not be easy for us. But a simple, open ethical faith can give our lives a center, coherence, meaning and direction in a world of seismic change."

-Dr. Duncan Ferguson, Staley Christian Scholar Lecturer

by geological events, geographic location, ocean currents, and human activities."

Lees-McRae Vice President for Academic Affairs and Dean of the College Jim Stonesifer mentioned the "international flair" that Lees-McRae's international students, faculty, and those who teach and study abroad bring to campus life. "By incorporating the experiences of these students and faculty into the campus community at Lees-McRae," he said, "we all become more aware of the people and customs that make up our global society."

"Lees McRae has changed... and will continue to change..."

Through "mission trips," creative "Alpha" and "Omega" community projects, and active service clubs and organizations, Lees-McRae students have developed a heightened awareness for the problems and needs of humanity. Over the past years several students and faculty and staff members have given up their spring breaks to make "mission trips" to Washington, D. C. and to an area near Homestead, Florida.

The Washington trip, according to Associate Dean of Student Development John Angel, gave students the opportunity "to explore a variety of opportunities for service to

mankind through participating in a construction project, working in an after-school program, and serving in a soup kitchen." The Florida group journeyed to an area near Homestead to be a part of an on-going effort to rebuild the area devastated by Hurricane Andrew last August. Tent platforms were built in a "tent city" designed to house over 100 families, including 300 children. The group also helped remodel and furnish a day care center during the week.

The "Alpha" for freshmen and "Omega" seminars for seniors are both centered around community interaction and service and have included work on "Habitat for Humanity" houses and ecological studies of the New River.

"Lees-McRae is a special place. People here know and call each other by name. Students here can realize their full potential in a caring, nurturing, supportive atmosphere."

--Dr. Crain--

"Winds . . . "Bring a Renewed Sense of Service to Mankind



Almost every student club and organization has contributed to Lees-McRae's yearly observance and celebration of "Earth Day," which was led last year by members of the Student Government and Students Against a Vanishing Environment (S.A.V.E.).

Event of the day included the planting of 49 hemlock and approximately 500 seedlings around the athletic fields which S.A.V.E. founder John Hinnan hoped would "make a lasting impression on Lees-McRae."

the college must remain true to its sense of mission..."

"Is what you are doing now going to get you to your destination? If you don't have a destination yet, that is the first requirement of you. Lees-McRae has a purpose which is clearly stated in the catalog and you are the objective of that purpose, which is to cultivate you by providing the curricula that encourages intellectual, spiritual, physical and social growth. The vision born here nearly 100 years ago is still visible."

--Grandson of the Founder of Lees-McRae Edgar Tufts, speaking at Founder's Day



You know the benefits of a small college: its intimate community, the close connection between faculty and students, the commitment to education. But more than anything else, a small college is a place where you can learn to think. Learning to think begins as a challenge. You learn that ideas and actions have consequences."

"Lees-McRae earns its future each day. That future remains bright so long as good friends support the educational mission that distinguishes our institution. Our Trustees reconfirmed that mission by approving a statement that, in part, reads as follows: From its origins Lees-McRae College has made a commitment, reaffirmed daily, to be both a community of learning and a community of faith. It is an institution proud of its Christian roots, nourished by Presbyterian

thought and practice, and humble in its calling as a servant of the church through its ministry of higher education."

--Bradford I. Crain

"As a minister I am privileged to serve as a trustee at this special college which shares my commitment to one of the historic tasks of the church, equipping persons mentally, physically, and spiritually to serve others, to honor God, and to enjoy life in all its fullness."

Lees McRae College Board of Trustees Chairman Dr. Daniel W. Massie

Acting Chairman of the National Endowment for the Arts Dr. Anne Imelda Radtice

Atahata

...a place where they

The Performing Arts Department offers both the challenges and privileges of a quality education. Opportunities for students start early and continue until graduation with the same individual attention that continues to distinguish Lees-McRae College. Although the entertainment of the audience is a priority, the students also get practical "hands-on" experience in the technical aspects of the theater, direction, and choreography of each of the various productions offered throughout the year. During an academic year students may be involved in two major musicals, two dramas or comedies, student directed one-acts, a traveling children's show, as well as several other productions.



It was a season of progress for all sports teams under the Lees-McRae College banner and leading the way were the women's soccer and basketball programs.

1992 squad the "most cohesive group I've ever had." The '92 team, which fell to top-ten ranked Elon in the first round of the District 26 playoffs in a hard-fought 2-1 decision, included the "Fabulous Five": seniors Jeanne Cobbe, Julia Callarman, Shela Moffett, and All-District 26 performers Karen Van Wert and Allison McDonald (Carolinas Intercollegiate Athletic Conference) "Player of the Year").



"Winds . . ." Propel Bobcat Athletic Teams to New Heights



Lees-McRae Head Women's Soccer Coach Ried Estus, who has been at the helm of the program since its inception in the mid 80's and has experienced unparalleled success in compiling a 94-20-2 record since that time, called his

The women's basketball team left a trail of destruction through District 26 during the regular season, setting numerous team and individual records along the way to compiling a 26-4 record

short...

season with a 12-15 record, improved to 17-11 in 1992, and exceeded Gupton's expectations. "This past season was better than I

year we could be ready to compete in the upper echelon of the NAIA."

Lori Eichler, Honorable Mention All-American, NAIA.

The Lady Bobcats found out how hard it is to beat a team three times in one season as Catawba defeated Lees-McRae 88-80 in the second round of the district playoffs. Two-time All-District 26 performer Lori Eichler ended her career with the highest number of points scored in either the men's or women's program tallying 1,998 over four years.



Taking more measured steps of progress were the football and men's basketball programs. The grid-iron Bobcats captured the first on-the-field victory against four-year competition, taking a 28-6 decision over West Virginia Tech in 1992. Even though it would be the lone win of the season, Head Coach John Pate was "thrilled." "We executed our game plan, did good things on each side of the ball, and gave the fans, who have stuck by us, a victory they could savor." Key performers included offensive center and senior Tom Nelson, who was named to both the NAIA All-American Second Team and All-American Scholar Athlete Team, and sophomore linebacker Ronnie Getz, who made the NAIA All-American Honorable Mention Team.

"This is a new era . . . and the Bobcat spirit is contagious. The excitement of the challenges ahead ore of fever pitch."

--Athletic Director Don Baker

freshmen or first-year players suited up for the Bobcats, comprising over 50 percent of the total roster. The enthusiasm and energy the freshmen brought to the program buoyed the hopes for future success for Head Coach Jack Lytton after the somewhat disappointing '92-93 season. "We set the wheels in motion this past year with the addition of several fine freshmen who received a great share of playing time and responded by showing dramatic improvement," commented Lytton. At the head of the class is All-District 26 player Alphonso Keaton, Jr., who led the team in several categories. The Bobcats bade farewell to senior Kelvin Wilson who ended his collegiate career as the Bobcats' all-time leading scorer with 1,092 points.

The steady progress continued with the Lady Bobcat volleyball team under the direction of Charles E. "Fish" Gupton. Lees-McRae, which finished the 1991

expected. The increased depth on the bench and the quality of the freshmen class helped take us to another level. With a few more quality freshmen next

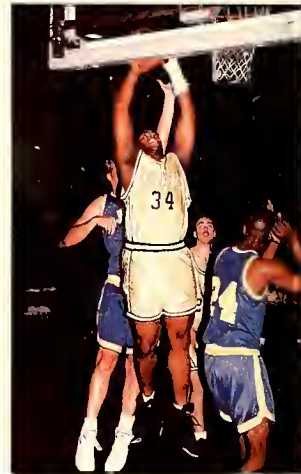
The 1992-93 edition of the men's basketball team was full of new faces as seven

the tradition continues... *Atahata*

When the season began for Head Men's Soccer Coach Fred LaRoche, he promised an exciting squad filled with an influx of talented and eager freshmen vying for playing time, and he delivered. LaRoche called the ability of the freshmen to come in and contribute right away a "big plus." "They received live game experience a year, or, in some cases, two years ahead of freshmen at other schools. It sets a solid base for us to build on," stated LaRoche. The Bobcats will have a new face in goal next season for the first time in four years as former All-American John Clark graduated in the spring.

The 1993 season opened for the Lees-McRae ski team with a men's squad primed to meet the challenge of living up to its potential and a women's team in the first steps of a rebuilding phase. The men's team was poised to capture the top spot in the southern division of the South eastern Collegiate Ski Conference when a knee injury in training took out captain Alex Dewey and the Bobcats finished a close fourth at the conference championships. Freshman Melonye Triven was the most consistent female racer and collected two bronze medals during the season.

The blizzard of '93, the largest snowstorm of the century, shut out the Lees-McRae netters for half the season. But inclement weather (45 days of spring rain--and two weeks of snow) was not able to dampen the Bobcat spirit. The women's team posted a perfect 8-0 record while the men posted a 6-2 mark for the 1993 spring campaign.



...a place where they shout...



**LMC Receives Fitness Center from
Broyhill Family Foundation**

In an effort to continue to promote the Greek ideal of education, a sound mind in a sound body, Lees-McRae added to the Cannon Student Center a weight-training and fitness center funded in full by the Broyhill Family Foundation. Associate Dean of Student Development John Angel stated, "The mission of Lees-McRae is to encourage the development of the whole person. We believe that physical fitness complements intellectual, spiritual, and social well-being. The benefits of this facility will be far-reaching."



Ogali.. friend **AND LEADER, DR.**



TIRELESS *lidatibnidabi* **(LEADER) AND WIFE ALICE,**

On Tuesday, April 6, Lees-McRae College President Dr. Bradford L. Crain announced his resignation as president, thus ending one of the most eventful and progressive terms ever enjoyed by a top official at Lees-McRae. Crain, who was officially inaugurated as the tenth president of Lees-McRae on September 20, 1985, will serve until the end of June and then has agreed to "take on any appropriate interim, non-presidential role that the Trustees may request to ensure an orderly and smooth transition of leadership."

Crain once termed teaching a "noble profession," and indicated that his decision to leave the college was based solely on his desire to return to teaching after a period of "personal renewal and professional study."

In accepting Crain's resignation, Chairman of the Board of Trustees Dr. Daniel Massie spoke of Crain's "exceptional tenure" as president of Lees-McRae. "Our individual lives, the life of Lees-McRae College, and indeed the life of the larger college community have been greatly blessed over the past eight years by the clear vision, the boundless energy, the trusted leadership, the faith and the friendship of Dr. Bradford L. Crain. We will be forever in debt to Brad and Alice Crain for bringing us through challenging and demanding times to this present moment in history, and for preparing us for new challenges and greater accomplishments as we move toward the beginning of our second century of service in the year 2000."

After his inauguration in 1985, it was commented by then Vice Chairman of the Board of Trustees John "Jack" King that Crain "hit the ground running," and that comment proved true as Crain's list of achievements grew quickly. Crain immediately put the wheels in motion to increase student enrollment, which hit a record high of 869 in the fall of 1989. The college's endowment, the value of its physical plant, and employee salary pool monies all increased under Crain's leadership.

Crain also was the driving force behind the transition of Lees-McRae to a baccalaureate-granting, four-year institution, which culminated with the graduation of its first senior class in May of 1990, and accreditation by the Commission on Colleges of the Southern Association of Colleges and Schools, also in 1990. Crain was "elated" with the news of accreditation. "I'm reminded of the verses of an old hymn: 'Labor over, sorrow ended, Jordan crossed.' The entire college community--trustees, friends, alumni, students, faculty and staff--has taken part in this historic expansion of the Lees-McRae mission."

One of the other great needs of Lees-McRae Crain recognized was a place for students to meet, relax, and have fun--a spot that could become the focal point for campus life away from studies. That dream became the Cannon Student Center. The 22,000-plus square foot facility, which houses the 213-seat H. C. Evans Auditorium, Wily's Place Snack Bar, The Broyhill Fitness Center, the King-Shivell Lounge, various types of recreation rooms, and offices for Student Service and student organizations, was dedicated on July 12, 1988.

CRAIN LEAVES LEGACY OF PROGRESS AT LMC...



First Lady Alice Crain, often described as "the wind beneath his wings," assisted her husband with the many dinners, functions, and events that took place on campus and in the community. Her energy and enthusiasm equalled that of the president.

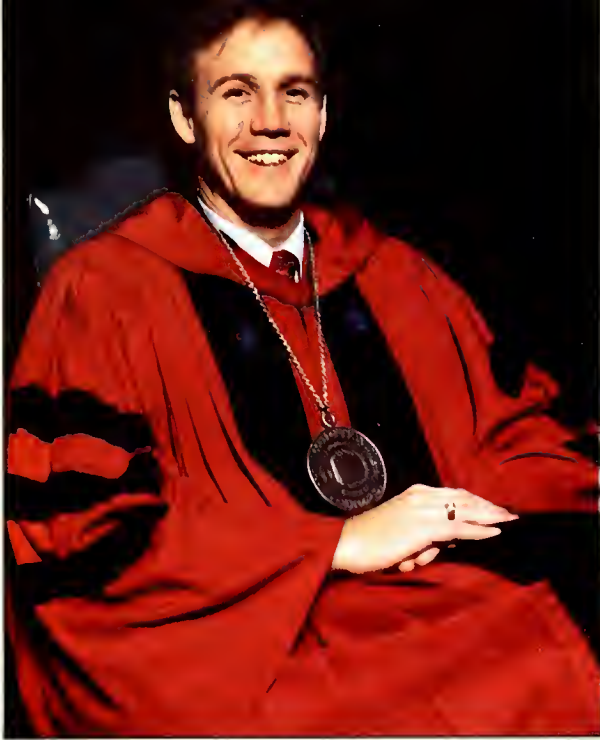
LEAVE INDELIBLE MARK...

The transformation that has occurred during Crain's administration has touched all aspects of campus life. The physical plant, for example, has undergone a metamorphosis that may not always be evident to the casual observer but has been substantial in scope and magnitude. The refurbishing and preservation of buildings and residence halls has given these structures a new identity while still keeping a close touch with the past. With Crain's encouragement, Lees-McRae has been noted throughout the nation as a campus devoted to the visual arts, sculpture in particular.

Four large sculptures (two by Wayne Trapp and two by William and David Turner) were donated to the college, the most significant being the "Roots and Wings" sculpture. The theme of "Roots and Wings" was developed by Crain to describe Lees-McRae's mission of "giving students roots to understand their heritage and wings to carry them through the future." "Roots and Wings" was also the title of the most ambitious capital campaign in the college's history in 1987. Three years and \$10.5 million dollars later, the "Roots and Wings" campaign was complete, with the greatest portion of the money underwriting academic scholarships and professional development for faculty and staff.

Although Crain will be remembered in the history of Lees-McRae as a man who brought monumental change to the college, he explained that one of the hallmarks of a Christian life is "little things done well and dedicated to Christ." And Bradford Crain, without a doubt, epitomized the essence of that particular hallmark, and more, during his eight-year watch presiding over Lees-McRae College.





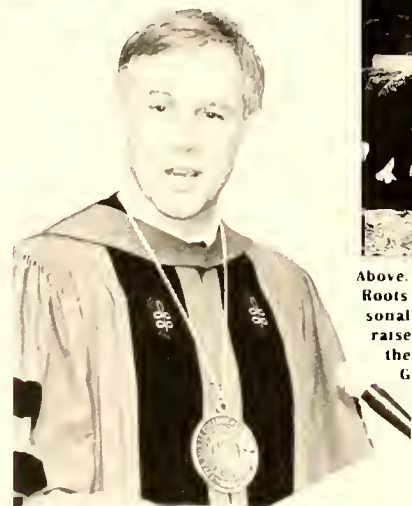
Since emerging as a senior, baccalaureate college with a growing reputation for excellence, Lees-McRae has added quality staff and student services, popular and relevant programs, upgraded facilities and equipment, and dedicated and well-qualified faculty. And, Lees-McRae is not finished yet.

The leadership provided by Lees-McRae President Dr. Bradford L. Crain has given all those involved with the college even greater hope and faith for the future. "Lees-McRae continues to hold its costs down for students by aggressively pursuing other sources to help finance a quality higher education in a geographic setting of incomparable beauty," stated Dr. Crain who has witnessed the transition of the college from a junior college to senior college status and been the driving force behind many improvements on campus during his eight years as

president.

Highlights in Crain's tenure also include a payment in full for the beautiful and functional \$2 million Cannon Student Center.

The transformation that has occurred during Dr. Crain's administration has touched all aspects of campus life. The physical plant, for example, has undergone a metamorphosis that, although subtle to the casual observer, has been substantial in magnitude. The refurbishing and preservation of buildings and dormitories has given these structures a new identity while still keeping a close touch with the past. The president's home, "Hemlock Hall," is a fine example of the restoration efforts instigated by Dr. Crain and wife Alice. In what Alice describes as "a labor of love," Hemlock Hall was renewed as a fitting historical landmark that is shared with the community and generations to come.



Above: Press conference for the Roots & Wings Campaign. Personality Ty Boyd headed the fundraiser with Dr. Crain. Plans for the Cannon Student Center. Grandson Kyle Bradford arrived during Crain's tenure. Charles Kull made several campus visits. Dedication of "Bear" sculpture. Crain announces four-year status.

Academics



Ontaroga **LEES MICRAE**

The President

Bradford L. Crain

President
 B.A., Berea College
 M.A., Ph.D., Harvard University
 Dr. Crain completed his eighth year as the tenth president of Lees-McRae College. He and his wife Alice kept a whirlwind pace with activities at the college.



Pat Bentley, Administrative Assistant to the President, was named "Employee of the Quarter" during the third quarter of 1992. The award was presented by Dr. Brad Crain.



The transformation that occurred during Dr. Crain's administration has touched all aspects of campus life. The physical plant has undergone a metamorphosis that has been substantial in magnitude and the transformation to four-year status has been of monumental significance.



Brownie Girl Scouts Kristen (left) and Karla Ramsey show Dr. Crain the different varieties of Girl Scout cookies and solicit an order.



Pat Bentley
 Administrative Assistant to the President



Melvin Law
 Director of Computer Services



George Gunn
 Chaplain
 B.A., Davidson College
 M. Div., Louisville Seminary

Harry Peterson points to improvements in the boiler facility while (l-r) Dr. Crain, Danny Odom and C.W. Anthony look on.



Bill Farthing (left) and Dr. Crain recognize Mrs. Ellen Payne, a Boone resident and long time supporter of the college, and outgoing Chairman of the college's Board of Associates.



Board of Trustees



Dr. Daniel W. Massie
Chairman
Kingsport, TN



James Appleby
Charlotte



Mrs. Janie Binnion
Banner Elk



Thomas H. Broyhill
Lenoir



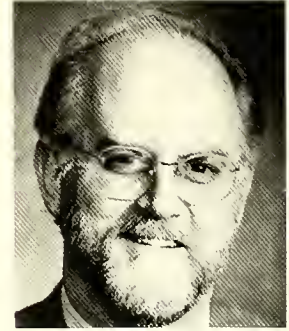
Edmund C. Byrne
Ocean Ridge, FL



James E. Lauritsen
Vice Chairman
Sarasota, FL



Mrs. Doris Carson
Kingsport, TN



Charles E. Clement
Boone



Mrs. Edith Colvard Crutcher
Washington, DC



Earnest W. Deavenport, Jr.
Kingsport, TN

Named to society of Edgar Tufts Fellows



Fred I. Dickerson
Mars Hill, NC



Paul F. Dietzel
Banner Elk, NC



Sam and Mildred Whalen

Pictured above, Sam and Mildred Whalen and at right, Greg and Chris Peeler were recognized at the trustee dinner for their services and contribution to Lees-McRae College. The Whalens and the Peelers were honored for their support to the college. Named for the founder of the college, persons qualifying for membership in the Edgar Tufts Fellows Society are those who invest annually and over long periods of time in the top levels of giving. Also named to the Society were David and Dee Humphrey who were unable to attend the dinner. Those recognized previously, and receiving the Bobcat sculpture by David Turner, include: Ed and Linda Jones, Art and Pat Viles, Ed and Betty Lovell, Jack and Judy King, Jim and Kay Lauritsen, Mr. and Mrs. David Bailey, Mrs. Dorothy Blair, Mr. and Mrs. Gordon Cain, Mr. James H. Carson, Mr. and Mrs. Robert G. Hayes, Mrs. Susan McAshan and the late S. M. McAshan, Mrs. Virginia Reeves, the late Mr. and Mrs. N. J. MacDonald, and the late Mr. and Mrs. H. Jack Faw.



Greg and Chris Peeler



Larry Estridge
Greer, SC



Dr. Lyman Fulton
Johnson City, TN



William M. Hale
Morristown, TN



Robert C. Hayes
Concord, NC



Mrs. Martha Huffine
Wilmington, NC



Rees Jenkins, Jr.
Lumberton, NC

Lovell Lifetime Trustee

At right, former Trustee Ed Lovell and wife Betty with President Crain was presented a plaque recognizing him as "Honorary Lifetime Trustee" of the college. In making the award Dr. Crain stated, "For your steadfast devotion to Lees-McRae College, for your effort and tremendous impact you've had on this institution, it is my pleasure to present you with this prestigious recognition as 'Lifetime Trustee.'" The Lovells made possible the renovation of the historic Rock House as the college's Admissions Center. When the Admissions Center was moved to its present location, the Lovells responded with funds to complete the new Lovell Admissions Center. Lovell has distinguished himself by serving as Chair of the Endowment Committee and served on the Financial Affairs Committee and the Executive Committee of the Board of Trustees for two terms.



Earl T. Jones
Raleigh, NC



Edward J. Kusel
Vero Beach, FL



William A. Lockwood
Boynton Beach, FL



Dr. Bobby A. Lomax
Salisbury, NC



Mrs. Roma Melton
Banner Elk, NC



Mrs. Julia Morton
Linville, NC



William D. Moneyhun
Bristol, TN



Sanford Prater
New York, NY



Mrs. Carol Trammell
Boca Raton, FL



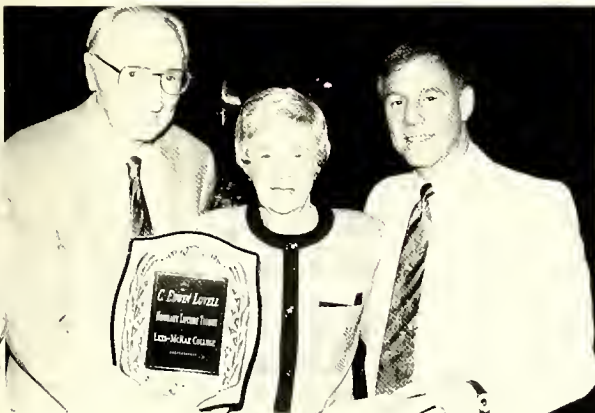
Mrs. Harriet Tucker
Greensboro, NC



John F. Walrath
Tequesta, FL



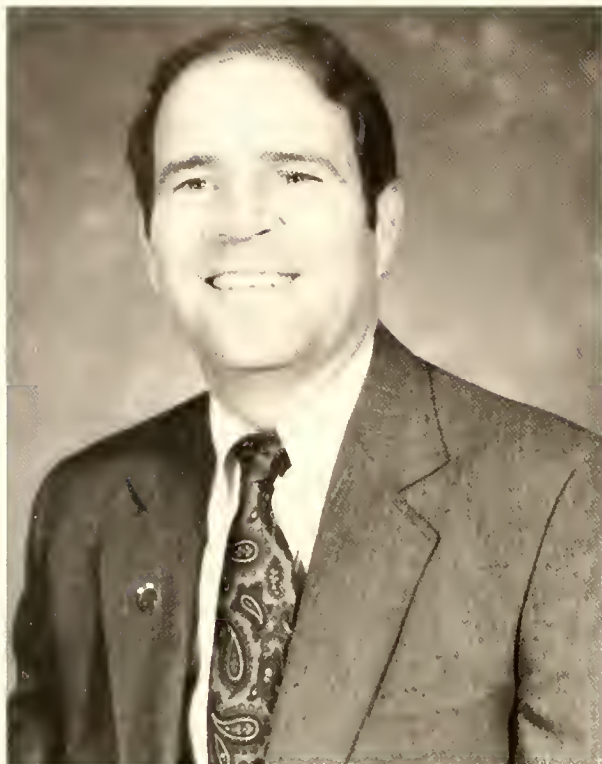
S. J. Whalen
Naples, FL



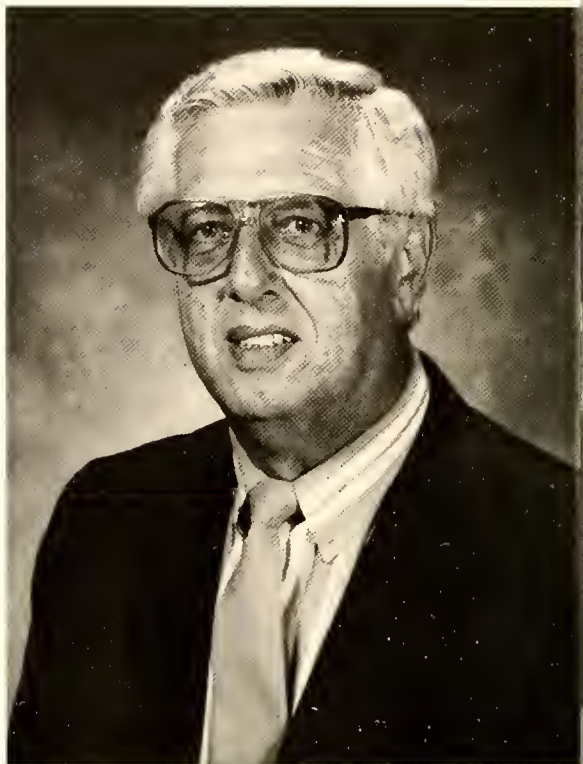
Plato Wilson
High Point, NC



Dr. Carter Wiseman
Newland, NC



Roy D. Kregge
Vice President for College Planning/Community Relations; B.S., Carson-Newman College M.A., Tennessee Technological College



Donald R. Baker
Vice President for Informational Services/Athletics; A.A., Lees-McRae College A.B., East Tennessee State University

College Planning and Community Relations

Informational Services and Athletics



Nancy Semones
Director of Continuing Education B.A., Lenoir-Rhyne College



Sandy Ramsey
Secretary, College Planning/Community Relations

Scott Ballard
Director of Public Relations/Sports Information Director; B.S., DePauw University

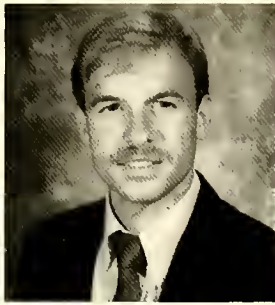
Jack B. Lytton
Head Men's Basketball Coach/Assistant Athletic Director; B.S., M., Appalachian State University





Janet Dixon

Head Women's Basketball Coach; B.A. Pfeiffer College; M.S., Gardner-Webb College



Ried Estus

Head Women's Soccer Coach; A.S., Montreat-Anderson College; M.A., Covenant College



C. E. "Fish" Gupton

Head Volleyball Coach/Men's & Women's Tennis Coach; A.S., Lees-McRae College; B.A., Emory & Henry College; M.S., Virginia Polytechnic Institute



Dan Higgins

Assistant Football; B.S. Auburn University



Todd Knight

Assistant Football Coach; B.S., M.A., Gardner-Webb College



Fred LaRoche

Head Men's Soccer Coach; A.A., Okaloosa Walton Junior College; B.S., University of South Carolina at Spartanburg; M.S., Midwestern State University



John L. Pate

Head Football Coach; B.S., North Georgia College; M.S., Georgia Southern College



Rita Smith

Athletic Trainer; B.S., University of North Carolina at Greensboro; M.A., Appalachian State University



Scott Ballard is recognized as "Employee of the Quarter" by Jim Stonesifer.



Joyce Baker

Assistant for Public Relations; A.A., Lees-McRae College



Joanne Franklin

Secretary, Informational Services

on Baker presents to Smith with her award as "Employee of the Quarter."



Pattie Benfield

Secretary, Public Relations



Suzie Fisk

Secretary, Athletic Department



Gary Juhan

Vice President for Students Services and Campus Facilities; B.A., M.A., Ed S., Appalachian State University



Patti Stephans

Dean of Student Development; B.S., University of Tennessee at Knoxville; M.S., Indiana State University



John Angel

Associate Dean of Student Development; B.S., University of Tennessee at Knoxville; M.A., Appalachian State University

The N.C. Housing Officers' Association honored three LMC staff members for service to the college. (L-R), Kacy Crabtree, Assistant Professor of Dining and Resident Director; Eric Terrill, Resident Director; Director of Residence Life Molly Donnelly who presented the awards; and Joyce Baker, Public Relations.



Student Services and Campus Facilities

Mary Graham

Director of Counseling Services; A.A., College of the Albemarle; B.A., University of North Carolina at Chapel Hill; M.A., Appalachian State University

Molly Donnelly

Director of Residence Life; B.S., Murray State University; M.A., Appalachian State University

Harry Peterson

Director of Maintenance; A.S., Nebraska Technical College; B.S., University of Nebraska

Grace Woody

Student Services Office Manager; A.S., Le Moyne College





Todd Gambill

Director of Intramurals/Activities; B.S.,
Western College



Sharon Coutant

Career Counselor; B.A., Transylvania University,
M.A., Appalachian State University



John C. Wilson

Health Services Nurse; B.S., M.S., Iowa State University,
M. Div., Th. M., D. Min., from Theological Seminary



Paul Isaacs

Director of Campus Safety and Security;
A.S., Western Piedmont Community College



Todd Gambill, shown with Dr. Crain, was recognized as "Employee of the Quarter." He joined the staff in 1989.



Jane Smith

Director of College Post Office



Iris Miller

Postal Clerk

Not pictured: Wayne Byers, Security Officer; Rufus Bid-
dix, Security Officer; C.W. Anthony, Coordinator of Plant Operations; Danny Odom, Coordinator of Physical Plant.



Betty Gentry

Student Center Staff



Clara Sparks

Student Center Staff



Melvin Law, who has served the college in a variety of ways during his eleven-year tenure, retired in March and was honored during a gathering of colleagues and friends. He served as accountant, vice president for business affairs, and director of computer services, and was also instrumental in establishing a campus-wide computer network. Law (right) is pictured with his wife Jean and Dr. Crain.



William B. Farthing

Vice President for Institutional Advancement and Business Affairs; B.S., Appalachian State University



Guy Adams

Director of Development; B.A., Berea College



Carter Hammett-McGarry

Director of Financial Planning; B.S., M.A., Appalachian State University; M.A., Presbyterian School of Christian Education

Institutional Advancement and Business Affairs



David Sokol

Director of Finance and Business Affairs; B.A., M.A., University of South Florida, Ph. D., Century University



Mary Johnson

Controller



Sandy Hoyle

Accounts Payable Clerk



Charles Crumley

Data Processing Manager



Faye Williams

Personnel Payroll Officer



Cathy Shell

Accountant



Carolyn Ward

Cashier/Fixed Assets Coordinator



The college continued its tradition of offering the finest in dining and entertainment for the benefit of scholarships by hosting the eighth annual "Celebrity" Scholarship Gala. One of many celebrities was "Buffalo Bob" Smith (left) shown here with Dr. Jack Robinson.



rd winner of the best costume award at annu-
employee's luncheon.



Jack Robinson

Director of Alumni Affairs and Church Relations, A.A., Lees-McRae College; B.A., King College; B.D., Columbia Seminary, D. Min., Normick Seminary



Michael Andrews

Director, Foundation/Corporate Relations & Grants, B.A., Lenoir-Rhyne College



Kathy Burton

Assistant Director of Computer Services; B.S., M.S., University of Tennessee at Knoxville



Frankie Needham

Secretary, Institutional Advancement and Business Affairs



Margie Revis

Secretary, Alumni Affairs and Church Relations



Darla Turbyfill

Secretary, Development Office



Stuart Silver

Financial Planning Office Manager



Laura Martz

Financial Planning Coordinator and Loan Counselor; B.A., Campbell University



Jimmy Street

Director of College Store/Purchasing



Gwen Miller

Purchasing Secretary and Clerk for College Store



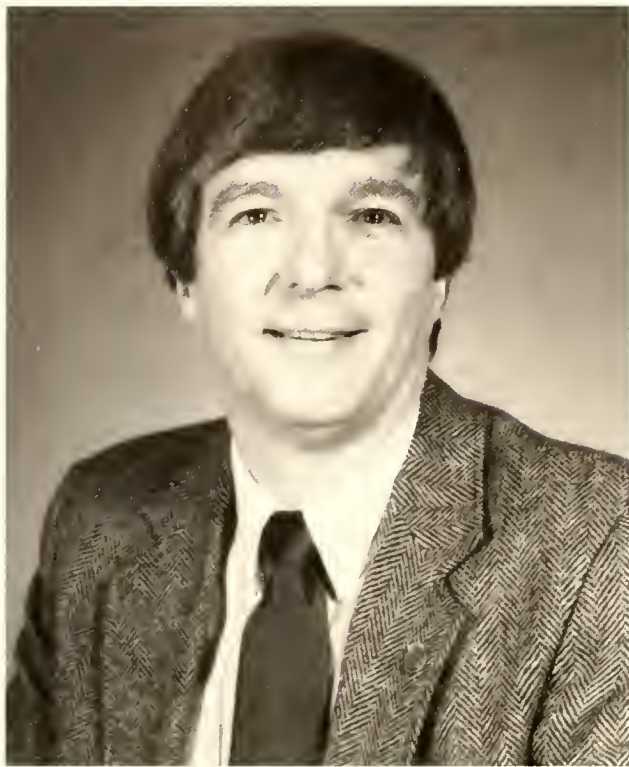
Danny McKinney

College Store Clerk



Roy Biggers

Director, ARA Food Service



James A. Stonesifer

Vice President for Academic Affairs and Dean of the College; B.A., Bridgewater College; M.A., University of North Carolina at Chapel Hill



Millie G. Wiseman

Registrar/Transfer Counselor; Honorary Degree, Lees-McRae College



Richard C. Jackson

Librarian; B.A., Western Carolina University; M.A., University of North Carolina at Chapel Hill



Donese Preswood

Assistant Librarian; B.S., M.S., Appalachian State University



Martha Dorage

Director of Admissions; B.A., Elon College



Mary Ann Abrusci

Data Processor

Tommy Anthony

Admissions Counselor, B.S., Lees-McRae College

Sandra Bott

Admissions Counselor, B.S., Lees-McRae College

Academic Affairs

Not pictured: Gil Bailey, Charles Duncan, Educational Talent Search.

Catherine Button

Admissions Counselor, B.S., Lees-McRae College

Robbyn Clemmer

Admissions Counselor; B.S., Lees-McRae College





Louise Jackson
Library Staff



Ramona Hayes
Library Staff



Rosie Smith
Library Staff; A.B. University of North Carolina at Greensboro, M.A., Appalachian State University



Mary Louise Pritchett
Library Staff



Linda King
Director, Freshman Experience/Academic Counseling



Tammy Franklin
Secretary, Vice President for Academic Affairs/Dean of the College



Kathy Henson
Secretary, Academic Affairs



Lynn Hinshaw
Communications Secretary



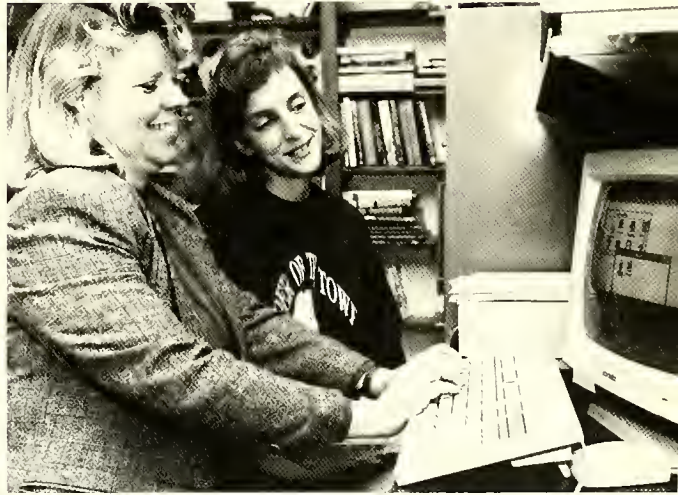
Joyce Ratliff
Secretary, Division of Performing Arts



Nancy Painter
Director/Coordinator of Talent Search; M.A., Ed.S., Tennessee Technological University



Darlene Gibbs
Administrative Office Manager, Talent Search; B.S., Lees-McRae College



Faculty

Division of Education

Roma Joyce

Professor of Education, Chairman; B.A., Meredith College; M.A., Wake Forest University; Ed.D., University of North Carolina at Greensboro



Ita Kilbride

Associate Professor of Education; Teacher Certification, North Ireland, M.A. Appalachian State University; Ed.D., University of North Carolina at Greensboro



Not Pictured: Daniel Kamanda, Associate Professor of Education; B.S., University of Sierra Leone; Ph.D., University of Illinois



Celia Dalton

Coordinator of the Curriculum Center

Division of Performing Arts

Janet Speer

Professor of Performing Arts, Chairman; B.S., M.A., Southwest Texas State University; Ph.D., Louisiana State University



Not Pictured: James Martz, Assistant Professor of Performing Arts, A.B., DePauw University M.F.A., University of Georgia

Kimberly Crabtree

Assistant Professor of Dance; B.A., Lenor Rhyne College; M.P.A., University of North Carolina at Greensboro



Stephen Parrish

Assistant Professor of Music; B.M., M.A., Appalachian State University



Charlotte D'Armond

Associate Professor of Performing Arts; A.A., Lees-McRae College; B.A., Carson Newman College; M.A., M.L.S., Ph.D., Louisiana State University



James Taylor

Lecturer in Music; B.A., M.M., Appalachian State University



Division of Academic

Opposite Page: Pat Smith

Assistant Professor for Academic Advancement; Chairman and Director of Learning Skills Program; B.A., Emory & Henry College; Certified Specialist, Kellogg Institute, Appalachian State University

Not pictured: Lar Shook, Instructor for Academic Advancement; B.S., M.A., Appalachian State University

Carolyn Bailey

Assistant Professor for Academic Advancement; B.A., King College; M.Ed., University of Central Florida



Amelia Gossett

Assistant Professor for Academic Advancement; A.S., Lees-McRae College; B.A., Emory & Henry College; M.Ed., University of Georgia





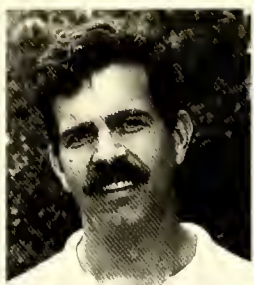
Judy McClung

Assistant Professor for Academic Advancement, B.S., Florida State University; M.A., Barton College



Joan Williams

Assistant Professor for Academic Advancement, M.A., Appalachian State University



Eugene Spears

Associate Professor of Biology, Chairman: B.A., University of North Carolina at Asheville; M.S., University of Florida at Gainesville; Ph.D., University of Florida at Gainesville

Not Pictured: Kenneth Davis, Assistant Professor of Chemistry; B.S., Presbyterian College; Ph.D., Texas A & M University

Karla McGinnis

Assistant Professor for Academic Advancement; B.A., Barry University; M.A., Appalachian State University



Debbie Gidney

Supervisor of Center for Academic Advancement; A.S., Lees-McRae College



Division of Natural and Physical Sciences

Charla Rae Armitage

Assistant Professor of Biology; B.S., Pennsylvania State University; M.S., Colorado State University; Ph.D., Oklahoma State University



Robin Canterbury

Assistant Professor of Biology; B.A., M.S., Appalachian State University; Ph.D., Clemson University



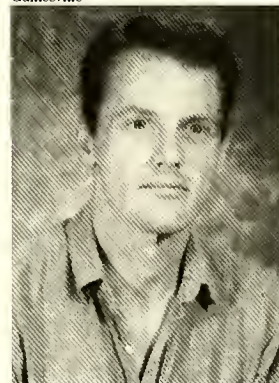
Claude Pyatte

Assistant Professor of Biology; B.S., D.V.M., North Carolina State University



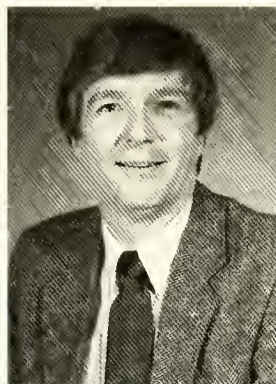
Stewart Skeate

Associate Professor of Biology; B.S., Rutgers University; M.A., California State University; Ph.D., University of Florida at Gainesville



James A. Stonesifer

Professor of Biology; A.B., Bridgewater College; M.A., University of North Carolina at Chapel Hill



Phil Teagarden

Associate Professor of Biology; B.S., Florida State University; M.S., University of Tennessee at Knoxville; M.A., Appalachian State University; D.A., Western Colorado University



Division of Social and Health Sciences

O'dell Smith

Associate Professor of Religion, Chairman;
A.B., Emory & Henry College; M.Div.,
Union Theological Seminary



Roberta Cauvel

Assistant Professor of Religion; B.A. Whit-
worth College; M.A., Presbyterian School of
Christian Education



Janet Dixon

Physical Education; B.A. Pfeiffer College;
M.A., Gardner-Webb College



Dwaine Greene

Assistant Professor of Religion;
Campbell University; M.A., Wake Forest
University; Ph.D., University of Virginia



George Gunn

Religion; B.A., Davidson College; M.Div.,
Louisville Seminary



C. E. Gupton

Physical Education; A.S., Lees-McRae Col-
lege; B.A., Emory & Henry College; M.S.,
Virginia Polytechnical Institute



Gary Juhan

Associate Professor of Sociology; B.A., M.A.,
Ed. S., Appalachian State University



Wayne Morris

Assistant Professor of History; B.A., Uni-
versity of Georgia; M.A., Harvard University;
Ph.D., University of Tennessee at Knoxville



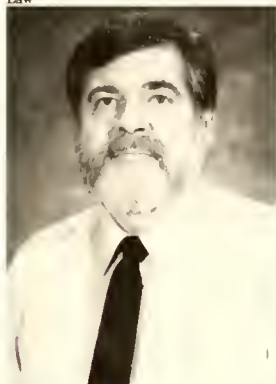
John Pate

Physical Education; B.S., North Georgia
College; M.S., Georgia Southern College



J. Michael Randleman

Assistant Professor of Criminal Justice; A.A.,
Mars Hill College; B.A., Wake Forest Uni-
versity; J.D., Wake Forest University School of
Law



Archie Smith

Associate Professor of History; B.S., M.A.,
Appalachian State University



Rita Smith

Athletic Training; B.S., University of
Carolina at Greensboro; M.S., Appala-
chian State University





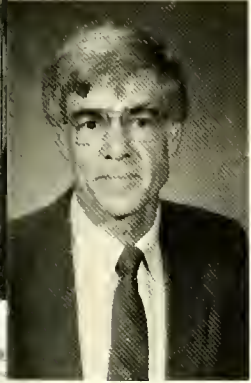
Allen Speer

Associate Professor of Political Science; B.S., M.A., Appalachian State University; Ed. D., University of North Carolina at Greensboro



Mary Wilgus

Associate Professor of History; B.A., M.A., Middle Tennessee State University; Ph. D., Vanderbilt University



John C. Wilson

Psychology and Sociology; B.S.N., State University of New York at Potsdam; B.S., M.S., Iowa State University; M.Div., Th. M., D. Min., Union Theological Seminary



David Yount

Associate Professor of History; B.A., Lenoir-Rhyne College; M. Div., Duke University; M.A., University of Vermont

Division of Mathematical Sciences and Business Administration

Samuel A. Burton

Assistant Professor of Business; B.S., M.S., University of Tennessee at Knoxville



Jack Coffey

Associate Professor of Business; B.S., M.A., Appalachian State University; Ed. D., Highland University



Susie Sheffield

Associate Professor of Business; B.B.A., University of Mississippi; M.S., Appalachian State University; Certified Public Accountant



Samuel B. Travis

Associate Professor of Mathematics; B.S., M.A., Appalachian State University



Not pictured: Floyd Fuller, Associate Professor of Computer Science, Chairman, B.S., Presbyterian College, M.A., Appalachian State University, C.D.P.; Xiao-Qing Meng, Associate Professor of Mathematics, B.A., Beijing Normal University, M.A., Ph. D., State University of New York at Buffalo

Adjunct Faculty

Mike Alexander, Clogging; **Elizabeth Lightfoot**, Reading; **Kenneth C. Nelson**, Criminal Justice; **Thomas Puckett**, Geography; **Diane Rydell**, Piano and Voice; **Catherine Smith**, Horsemanship; **Barbara Timberman**, Art Appreciation.

Division of Languages Literature and Fine Arts



Left: William B. Watterson
Associate Professor of English, Chairman; A.A., Gardner-Webb College; B.S., M.A., Appalachian State University



Right: Bradford L. Crain
Professor of English; B.A., Berea College; M.A., Ph.D., Harvard University

Michael E. Joslin
Associate Professor of English; B.A., Ph.D., University of South Carolina at Columbia

Ted Ledford
Professor of English; B.S., M.A., Appalachian State University; Ph.D., Ohio University

Philip Royall
Associate Professor of Spanish; A.B., Western Carolina University; M.A., Appalachian State University



Ruth Shomaker
Assistant Professor of French and Director of Language Lab; B.A., Western Carolina University; M.A., Memphis State University



Carolyn Travis
Associate Professor of English; B.S., M.A., Appalachian State University



Mary White
Associate Professor of English; B.A., Queens College of The City University of New York; M.A., Hofstra University; M.A., Bucknell University



Radice Speaks at Opening Convocation



Acting Chairman of the National Endowment for the Arts

Anne-Imelda Radice was featured speaker during Lees-McRae College's Opening Convocation ceremonies Tuesday, August 25.

Lees-McRae President Bradford L. Crain, who introduced Radice, called her a person whose keen intellectual experience with an appreciation for the arts, and critical sensitivities about the place of art in our society put her in a singular position.

"It is not easy to be a leader in a field strewn with the land mine of diversity," Crain said of Radice, "but she is such a leader. If art is the newspaper of eternity, then Anne Radice is one of the master teachers of what at once contemporary and eternal."

Radice began her speech alluding to a quote by Henry David Thoreau. "By now many of you are familiar, through Lees-McRae literature, with the quote from Henry David Thoreau about building a college in the mountains and having the students gain inspiration there. Lees-McRae is a beautiful setting for educating the mind and soul. I would like to begin my remarks, however, with a slightly different quote from Thoreau. He wrote, 'Pursue, keep up with, cir-

nd and round your life, as a
does his master's chair. Do
it you love. Know your own
e; gnaw at it, bury it, unearth
nd gnaw it still." That's why,
sure, many of you came to
es-McRae, to have
opportunity to do what you
y. To come to the mountains
inspiration. To enjoy the
ue benefits of an education
small school.

"You know the benefits of a
all college: its intimate
munity; the close connection
ween faculty and students,
commitment to education.
more than anything else, a
all college is a place where
can learn to think. Learning
think begins as a challenge.
n learn that ideas and actions
e consequences.

"You who are students in the
nderful Performing Arts
partment here at Lees-McRae
lege might ask yourself from
e to time, 'Why study the
s?' Certainly there are more
ative careers and there are
re concrete pursuits. What
ws us to the arts, whether as
sts or teachers or administra-
s?

"For me, and for many of you
e in this room, this affinity for
arts began in childhood. With
ents who nurture the spirit
d the imagination. Graham
en wrote: 'There is always
moment in childhood when
door opens and lets the
ure in.' For some children that
or is the arts. The arts help
ch creativity, communication,
f-confidence, and art provides
building blocks for all future
ducation.

"From its very beginning, the
tional Endowment for the Arts
s an interest in increasing the
diences for the arts and
roving arts education. The
tial effort in 1966, 'Poetry
adings in the Classrooms,'
ched over 11,000 children. In
e 1992-93 school year, we
ect to help over four million
ildren in arts education
ograms across the nation. At
e college level, the Arts
dowment has concentrated on
orts to make the arts available
campuses through grants to
esenters, museums, small
esses and other activities. At
e 1990 presentation of the
tional Medal of Arts, President
sh said to the artists gathered
the White House: 'You've
eated sights and sounds and
aracters, crafted anew within
e human imagination, and in so
ng, enriched the colors on the
vas of our national life. It is
ur efforts in the arts and
manities and the realm of the
it that distinguish America as

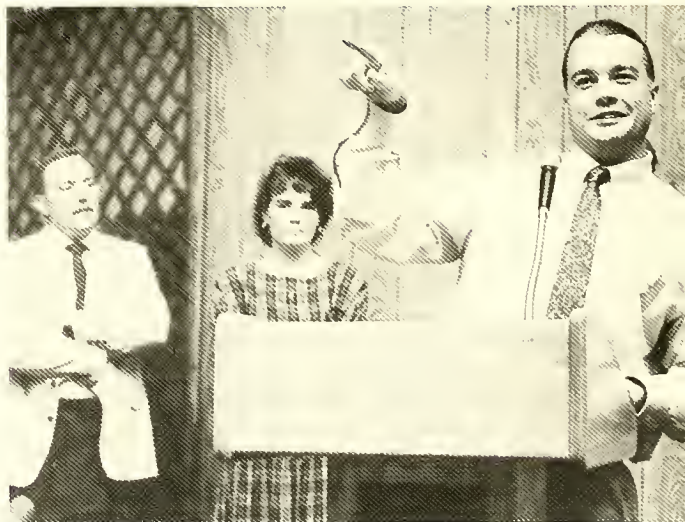
a world leader rather than merely
a world power.'

"So we look to you-
tomorrow's leaders-to achieve
these goals for the next century:
a better educated audience for
the arts, a stronger network of
public support and a better
system of arts delivery to rural
and multicultural communities.
You are well-suited for the task.
Your education here at Lees-
McRae provides the tools-the
ability to communicate, learning
to think, the responsibility for
your ideas, and the patience to
listen to others' opinions. You
aren't just students, faculty and
administrators. You are the
elemental guardians of the
future, our ideals and
communities.

"The Arts Endowment exists
to help the creators and
discoverers make their music,
paint tomorrow's landscapes,
craft and words and images
which capture contemporary life.
The Endowment has never
sought to fund anything but
excellent art and has never
intended to offend. Over its
history, the Endowment has
made nearly 100,000 grants of
all kinds, and two or three dozen
have raised some degree of
concern. Yet we have had to fight
for the past several years just to
stay in business. At times in my
first few months on the job, I've
had to face those difficult
incidents and make rough
decisions. The lessons of my
education helped prepare me for
the responsibility-not only as a
student of art history, but as a
student who was taught to think.

"I'd like to close the circle by
alluding to Thoreau again. He
wrote: 'The world is but canvas
to our imagination.' Those of you
in the audience who are just
starting out have an empty
canvas to paint as you will. Use
all your colors. Be brilliant.
Those of you who've already
begun, have many blank spaces
left to paint and many colors yet
on your palettes. Be brilliant as
well. Know your own bone. Do
what you love."

Trustee scholarship recipient John Hinnant, President of the
Student Body, speaks at trustee dinner.



Classes

Freshmen



Above: Kristy Kind and Chris Bartlett are flanked by juniors Jason Pinholster and Michele Monsour at Christmas tree lighting on campus.

Bethany Baumgardner
Raleigh
Erick Bayne
Bronx, NY
Ryan Bellomo
Tampa, FL
Brian Bentley
Vero Beach, FL



Bonnie Biggers
Salisbury
Justin Borst
Burlington
Jodi Bost
Lenoir
Frank Bowen
Myrtle Beach, SC





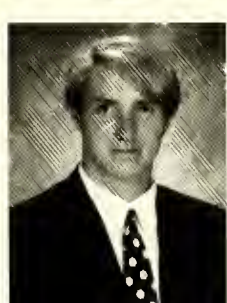
Carlos Brandon
Oxford
David Brown
Charlotte
Vanessa Bryan
Ocracoke
David Buckley
Midlothian, VA



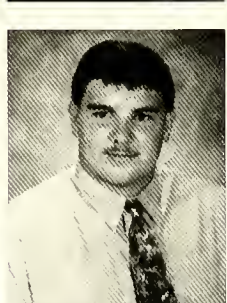
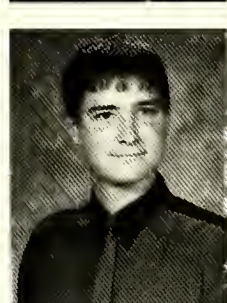
Adrienne Burgess
Simpsonville, SC
Clint Byrd
Murfreesboro, TN
Karla Byrd
Bakersville
Mike Callahan
Lake Worth, FL



Clinton Cantwell
Tryon
Kelly Champion
Hillsborough
Gary Chesno
Blythewood, SC
Bryan Childress
Newland



Shannon Church
Traphill
Matt Connors
Kingsport, TN
Charles Cooper
Bristol, VA
Todd Crawford
Lewisville



Darren Crews
Winston-Salem
Manuel Cruz
Fayetteville
Tim Dameron
Winston-Salem
Cliff Davidson
Hillsborough

Heidi Deeks
 Naples, FL
Amy Dickey
 Greer, SC
Sidney Dixon
 Bristol, GA
Larry Drum
 Granite Falls



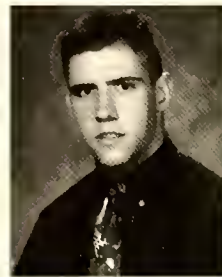
Ray Elkins
 Roswell, GA
Steve Estes
 Savannah, GA
Andy Everhardt
 Cooleemee
David Fender
 Burnsville



Christopher Finley
 Martinsville, VA
Stephen Flynn
 Lancaster, SC
Chris Fuller
 Hopkins, SC
John Fullwood
 Myrtle Beach, SC



Neville Glover
 Greer, SC
Donnell Griffin
 Asheville
Edgar Gurley
 Newton
Anthony Haire
 Elizabethton, TN



Willie Harris
 Raleigh
Jennifer Hedgepath
 Gastonia
Tim Henson
 Marion, VA
Joel Horton
 Hardeeville, SC



Freshmen



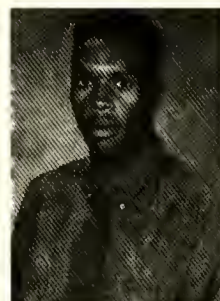
Harvest Road Race



Travis Hyatt
Bryson City
Karen Jaggers
Hampton, VA
Pernel James
Conover
Jason Jenkins
Statesboro, GA



Frances Johnson
Salisbury
Kelley Johnson
Monroe
Jason Jones
Elk Park
Brad Kearney
Franklinton



Alison Kiggins
Charlotte
Kristy Kind
Clemmons
Megan Kiniry
Fort Myers, FL
Willis Knight
Cherokee



Students arrive on campus and are soon involved in activities such as Homecoming.

Anne Landis
Salisbury
Richard Manell
Charlotte
Hunt Manning
Williamston
Erin Mannion
Princess Anne, MD



Julee Marshbanks
Boone
Kim Mattox
Christiansburg, VA
Sherry McCloud
Elk Park
Troy McCormick
De Land, FL



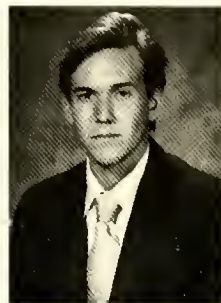
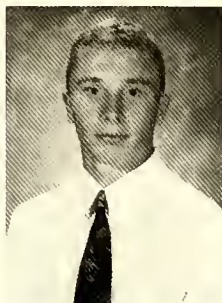
Chris Mueller
Winston-Salem
Melody Musick
Bristol, TN
Kevin O'Brien
Cary
Mark O'Dell
Bristol, TN



John Parks
Statesville
Brent Pearson
Morganton
Gary Phillips
Lenoir
Steve Phouangphrachann
Rockingham



Jason Pope
Charlotte
Brian Prowant
Zephyrhills, FL
Kammie Reda
Islamorada, FL
Dell Roberson
High Point



Kristina Robinson
Boone
Scott Russell
Evarts, Ky
Sean Sanders
Town Creek, AL
Trent Schofield
Tampa, FL



Damian Sheber
Brooklyn, NY
Marni Shor
Tampa, FL
Stephanie Sicks
Tampa, FL
Christie Simonds
Bryson City



Tracey Sizemore
Greeneville, TN
Chris Stephenson
Durham
Couby Stilwell
Connelly Springs
David Sutherland
Cary





Brian Sutton
Jacksonville, FL



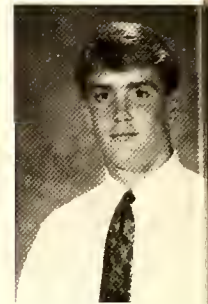
Ronnie Sweatman
Lexington



Jonathan Sword
Abingdon, VA



Tony Tapia-Aguilar
Costa Rica



Chris Thomas
Jacksonville, FL



Choosing a major is sometimes a difficult decision for college students so a Majors Fair was created to help students find out more about the majors available at Lees-McRae.

Freshmen

Niko Thomas
Decatur, GA
Cherie Thompson
Cary
Carter Todd
Lookout Mountain, TN



Seth Townley
Dawsonville, GA
Michael Tyler
Winston-Salem
Chris Vane
Charlotte





Mauricio Veltze
Vienna, Austria
Bryan Vernon
Marion, VA
Susan Vogel
Wallingford, PA
Susan Walsh
Mountain City, TN



Above, Paul Isaacs, Director of Security, conducts safety program in Virginia Residence Hall. At left, mock elections were sponsored by ARA Food Services while SGA President John Hinnant looks on as Watauga Democratic Party Chairman Andy Reese hands a ballot to Dena Moyer. Clinton won the mock election at LMC.

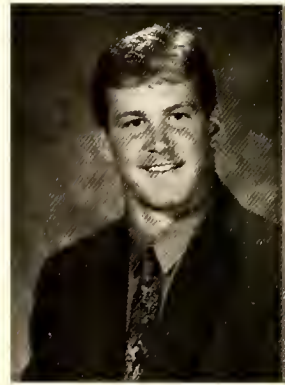


Leslie Ward
Burlington
Graham Warren
Charlotte
Heather Wauford
Greensboro
Walt Weathers
Banner Elk



Melody Willey
Stone Mountain, GA
Amy Wilson
Boone
Candace Yaged
Charlotte
Sasha Zyrianova
Moscow, Russia

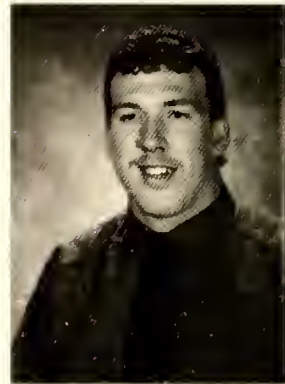
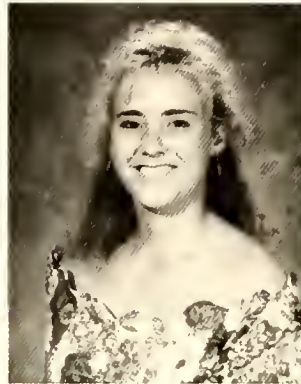
Kristen Baucom
Concord



Cai Bennett
Mount Olive

Sophomores

Kelli Blalock
Montezuma
Libby Byrd
Bakersville
Shawn Compton
Honaker, VA



Gayle Farina
Bay Pines, FL
Tracey Fox
Morganton
Eric Franklin
Jonas Ridge



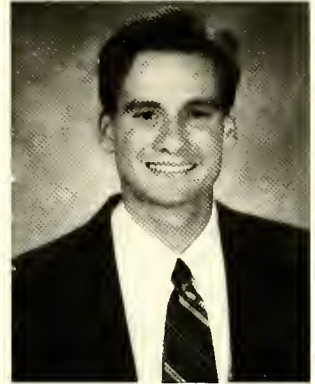
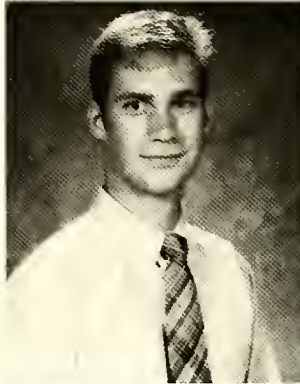
Chris Gentry
Ronda
Eric Gentry
Banner Elk
Ronnie Getz
Cocoa, FL



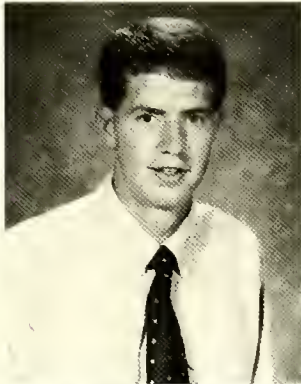
Michael Hacker
Spring Hill, FL
Sara Jones
Linville
Deana Magaw
Gainesville, FL



Kimberly Marshall
Granite Falls
Patrick O'Brien
Summerville, SC
Scot Pankey
Lenoir



Chad Quesenberry
Abingdon, VA
Brett Rutland
West Columbia, SC
Mitch Shelton
Chester, VA



Paul Stephenson
Cary
Dax Witherspoon
Knoxville, TN
Ginny Worsley
Greensboro



Juniors

William Bake
Boone
Tammy Clark
Lenoir
Jerame Conkin
Fall Branch, TN



Roger Conkin
Fall Branch, TN
Waynette Gentle
Kannapolis
Genevieve Gipps
Fort Lauderdale, FL

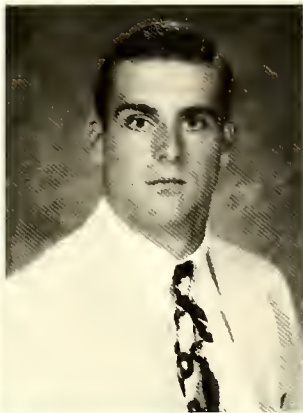


Michelle Halsey
Todd
Joe Jenkins
Matthews
Michelle Lieneck
Cary





Brad Mettee
Banner Elk



Jon Moore
Bonaire, GA



Sam Mumpower
Powder Springs, GA



Tom Nelson
Wilson



Mandy Poplin
Ronda



Laura Robinson
Spruce Pine



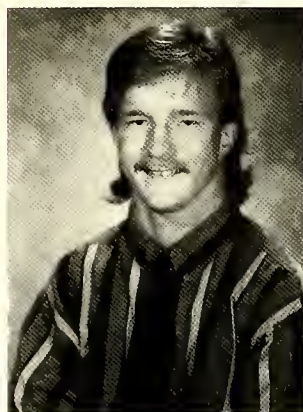
Jane Shaw
Walkertown



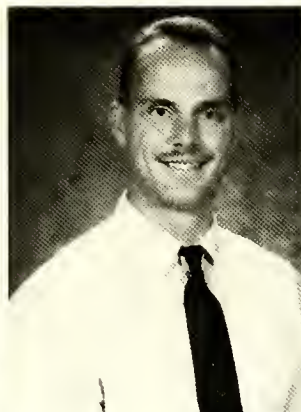
John Skipper
Morganton



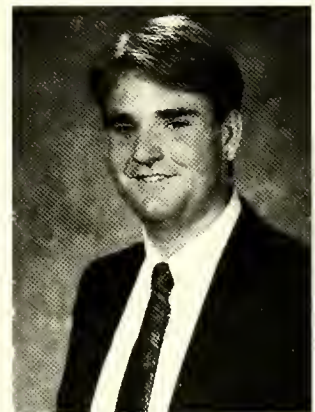
Tonya Stephens
Hildebran



Kevin Teeter
Monroe



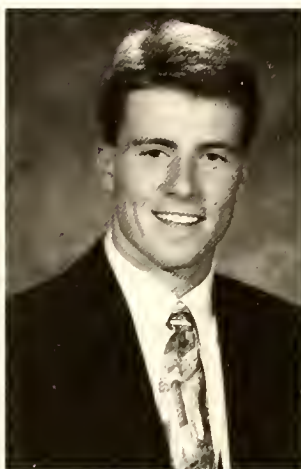
Steven Tollie
Spruce Pine



Charlie Zeigler
Gainesville, FL

Seniors

Thanks to a glowing nomination by former SGA President, senior Chris Arnold, his parents were selected as "Lees-McRae College Parents of the Year." (L-R): Director of Alumni Affairs and Church Relations Jack Robinson, Tina Arnold, Chris Arnold, and Clif Arnold. The Arnolds were recognized during half-time of the football game with Concord College.



Chris Arnold
Winston-Salem



Scott Auville
Charlotte



Julia Callarman
Casselberry, FL



Anne Craven Cook
Banner Elk



Stephanie Disher
Winston-Salem



Dale Friese
Richmond, VA



Chris Garmon
Marietta, GA



Leslie Gray
Kingsport, TN



Noel Gressner
Bristol, VA



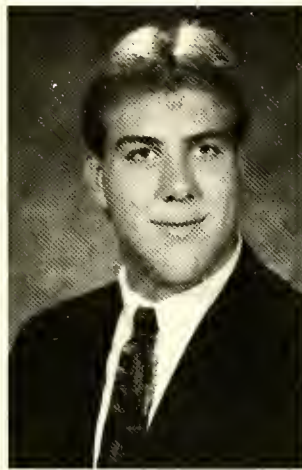
Betsy Hall
Banner Elk



Wendi Hurd
Glade Spring, VA



Amie Lewis
Jefferson



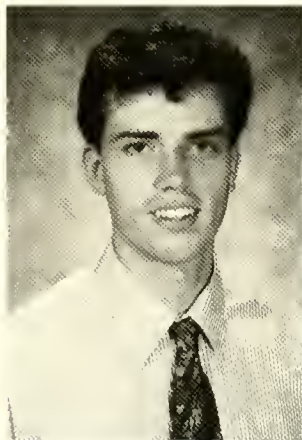
Brad Lowe
Asheboro



Pam Miller
Kingsport, TN



Kara Purcell
Crystal River, FL



Curt South
Charlotte



Melissa Tedder
Moravian Falls



Teng Vengchiem
Bristol, TN

Dr. Angel Delivers Spring Semester Opening Remarks

Dr. Roma Angel, Chairman of the College Division of Education, was the featured speaker during Opening Convocation ceremonies. An address, entitled "It's Your Choice," was sponsored in part by the Staley Distinguished Christian Lectureship Series.

"What I want to talk to you about tonight is the fact that regardless of where you are in your life, there are certain choices that you must make for yourself - these are choices that no one else is responsible for, but you. These are choices that you must make for yourself, or by default, a choice will be made for you. It's like North Carolina native Harvey Cox, Professor of Divinity at Harvard Divinity School, wrote: 'Not to decide is to decide.'

"These are extremely hard times when it comes to making informed choices and knowing that the choices you make today can effect the quality of your entire life. One of the best choices that you have made so far was to attend college.

"College, to me, is a place to learn to make what the educational theorist Maxine Green at Columbia University calls 'wide-awake' choices - choices where you approach the decision knowing, to the best of your ability, what the ramifications of your choices will be.

"I believe that there is an intuition in all of us that is telling us some very basic and truthful information. What college can do is help us apply our intelligence to our intuition; college can help us gain confidence in our own ability to think for ourselves, to listen to our own intuition, examine it, and follow it or renounce it in a given situation.

"What will your life's work be? When I talk about life's work I am not talking about a job or a career — I'm talking about carrying on the mission of God in your own life. My colleagues here at Lees-McRae know that it is our mission to prepare you for more than to do a job when you graduate. We must prepare you for your life's work. Look at the general education core, look at the hallmarks of the Lees-McRae graduate. Your college professors and administrators know the importance of preparing you to do your life's work and that is what we were referring to when we wrote in our purpose statement about a program of study that would result in each student's developing a balanced sense of personal values, integrity, and moral worth."

"College is not just preparation for life after college, there, after college. College is life. You must make some initial choices now about your college and your life's work.

"The only guarantee you have on this earth is today. So today you must start doing your life's work. Choose wisely so that you can spend the rest of your life growing into your choices, and into a life of meaning. All of us can't go out and change the world in big ways. But, all of us can do our life's work in our own quiet ways. It's your choice."

Activities

Highlanders Fall Concerts



Ontario LEES-McRAE



Dr. Roma Angel

Veteran sportswriter Wilt Browning, currently with the Greensboro Daily News, related stories of sports heroes that he has been associated with over the years and addressed sports fanaticism and whether or not it is a symptom or byproduct of today's society.

Dr. Sally Peterson Karioth, a professor at Florida State University, spoke on "Enjoy Life — This is Not a Dress Rehearsal."

Duncan S. Ferguson, Director of the Committee on Higher Education of the Presbyterian Church (U.S.A.), was a fall Staley Distinguished Christian Lecture Series speaker. His topic, "Faith in a Time of Seismic Change," dealt with a post-modern, global, multicultural, and ecologically threatened world. He spoke of finding and developing faith at a church-related college and said that there is no better place to ask honest and direct questions concerning dramatically intelligent and social issues. "This atmosphere will enable students to better face the world and deal with drastic changes and confusion they will face."

Dr. Bertice Berry, an outstanding comedienne with a doctorate in sociology, delighted the Hayes Auditorium audience. Her message on racism and sexism was equally valuable.

Hugh Morton, owner of Grandfather Mountain, renowned photographer, and noted environmentalist, presented a slide show on "acid rain." The program was sponsored by S.A.V.E. (Students Against a Vanishing Environment).

Statesville, NC Chamber of Commerce President Danny Hearn discussed the role of business and education while addressing one of Teacher Education classes.

The Lees-McRae Performing Arts Department's annual fall concert featured the Highlanders, Cloggers, and vocal ensemble, as well as vocal soloists.



Wilt Browning



Browning with students during question and answer period.



Grandfather Mountain Highlanders Concert



Dr. Sallie Karioth



Dr. Duncan Ferguson



Hugh Morton



Dr. Friend Abernathy



Abernathy speaks to Teacher Education students.



Dr. Bertice Berry



Dr. Berry laughs it up with student Kevin Crosby.



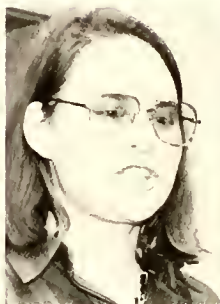
Bob Funk



Danny Hearn



Kitty Grissom



Armitage



D'Armond



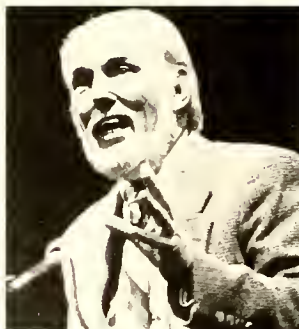
Greene



Dr. Dudley Flood



Dr. Talbert Shaw



Dr. Tom Boyd

Bob Funk, Assistant Professor at the University of Alabama-Birmingham, presented a one-man play, "Memoirs of a Confederate Soldier." He took the audience through a number of the soldier's experiences, beginning with the start of the war and going through the surrender.

Dixie Friend Abernathy, North Carolina Teacher of the Year, addressed a Teacher Education class on some of the ways she motivates and instructs her students.

Dr. Dudley E. Flood, Executive Director of N.C. Association of School Administrators, was a featured speaker during Martin Luther King/Black History Celebration month.

Dr. Talbert O. Shaw, President of Shaw University, spoke during Black History Celebration month on "Leadership During the 21st Century."

Dr. Tom Boyd, Associate Professor of The Philosophy of Religion and Ethics at the University of Oklahoma, was a Staley Distinguished Christian Lecturer in the spring and captivated his audience with his lecture, "From Milk to Meat: Journey of Spiritual Maturity."

World famous mountain climber Kitty Calhoun Grissom was the featured speaker during Women's Emphasis Week activities. She delighted a capacity crowd in Evans Auditorium with a side presentation entitled "Reaching New Heights." LMC Assistant Professor of Biology Dr. Charla Rae Armitage read an original poem and short story and Dr. Charlotte D'Armond spoke on the life of former First Lady Eleanor Roosevelt during "Women's Voices." Assistant Professor of Religion Dr. Dwaine Greene spoke on "Women, Paul, and Paul's Doctrine," during Women's Emphasis Week.

Lees-McRae College trustees, faculty, staff, and students helped celebrate the formal dedication of the Robert C. Pittman Business & Communications Center. The center, which houses 24 high-powered AT&T computers, a faculty lounge, a reception area, a conference room, and five faculty offices, was made possible by a major gift from Naples, Florida businessman Robert C. Pittman, a donation of 24 computers from the AT&T Corporation, and additional fund support from the Janirve Foundation.

Chairman of the Lees-McRae Board of Trustees Dr. Daniel Massie termed the dedication a "great day in the history of Lees-McRae College," and Academic Dean Jim Stonesifer spoke of the impact of The Pittman Center on the Business and Communications curriculums at Lees-McRae as "very significant."

can come together to understand, in a new and exciting way, how data are interpreted and the way that data are actually taught."

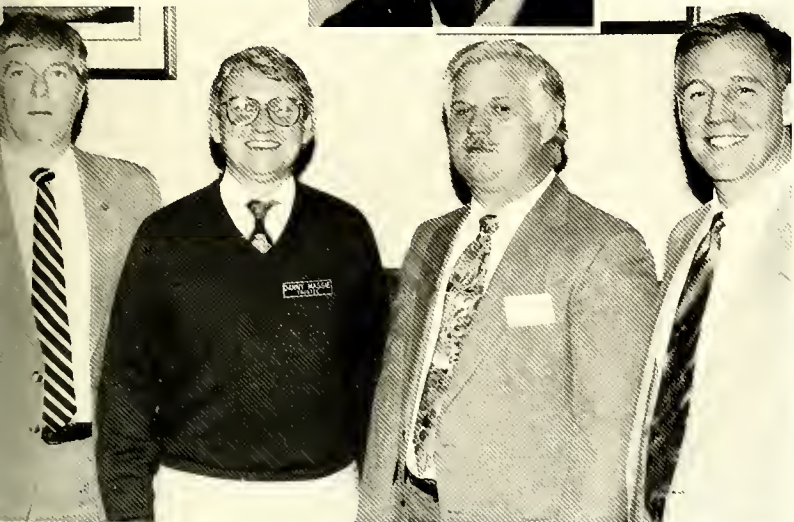
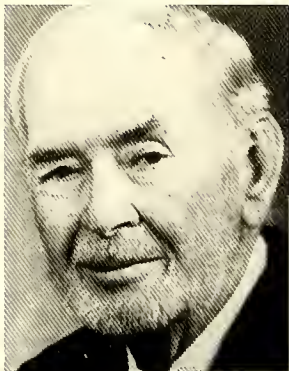
The Pittman Center is also a "logical extension" of Lees-McRae's campus wide computer network, according to the Network Systems Analyst Kathy Burton. "We will combine people, information, and technology to better prepare

computer system can accommodate many additional data bases, at least 15 more computers, and can evolve into whichever direction will best serve our students."

Pittman, who was unable to attend the dedication due to health reasons, sent a message summarizing his 17-year association with Lees-McRae. "I have watched with admiration as Lees-McRae has been carefully guided with skill, dedication, and hard work, but most of all talent and much love to truly be the college that cares. I am indeed honored to have been able to participate in some small way over the past 17 years."

In thanking the Lees-McRae trustees on hand at the dedication for their "vision, hard work, and very responsible decision making," Dr. Crain added a few final words about the benefactors of the center. "So,

were Bob Pittman here today, we would celebrate his presence and thank him for the magnificent gift that he gave for the naming of this center, but I think we would also thank him for the 17 years of connection with Lees-McRae which has produced many gifts and much good wisdom for us. We certainly thank AT&T for its extraordinary corporate responsibility for making sure that colleges and universities have the most up-to-date equipment. And we are very grateful to the Janirve Foundation which has also benefited Lees-McRae in the past with our Teacher Education Department. No project can be successful without a lot of folks cooperating with each other, grasping hands and making things work, and we appreciate very much all who have been involved with making The Pittman Center a reality."



**LMC DEDICATES
PITTMAN CENTER**

Above, Robert C. Pittman. Principals in the dedication (l-r): Vice President for Academic Affairs Jim Stonesifer; Dr. Daniel Massie, Chairman, Board of Trustees; Bill Howard, AT&T Representative; Dr. Brad Crain.

"The capabilities The Pittman Center provides in terms of information and education will enable our professors to take teaching to another level and further study and equip Lees-McRae graduates for the challenges they will face in today's highly competitive and computer-orientated society," said Stonesifer.

Lees-McRae President Dr. Bradford L. Crain echoed Stonesifer's excitement. "The Pittman Center is a place where students and faculty

all of our students. Lees-McRae students will be using the computers to retrieve and analyze real, not fabricated, business data via data bases like CD-Rom," stated Burton, who helped install the computers along with Computer Services Director Melvin Law.

The Center, which will enable students to access information from all over the globe, presents "boundless opportunities," according to Stonesifer. "The Pittman Center was put together with future expansion in mind. The



Massie: "On Being Obligated" Founders Day Message

Dr. Daniel Massie, senior minister of the First Presbyterian Church of Kingsport, Tennessee and Chairman of the Lees-McRae College Board of Trustees, was the featured speaker during Founder's Day ceremonies at Lees-McRae.

The title of his address was "On Being Obligated," and in it he spoke of the lack of modern-day heroes and the debt we owe to those who have preceded us:

"It is right and good that we should be here this night and that we should be a part of a celebration such as this we call 'Founder's Day.' Certainly all of us recognize the debt we owe to these founders, to these ances-

have an expression very similar to 'thank you,' or 'thanks.' It is 'much obligated.' Literally, it means that we are obligated to someone else. We don't often speak these days of being obligated, and perhaps even less do we feel a sense of obligation to other people, and I am convinced that we are the poorer for it. We must all at some point recognize the debt of gratitude that each of us owes to the people in our lives, some of whom we cannot, people who have inspired or equipped us by their word or their deed or their disposition in life.

"One of the disturbing trends in our society is the dearth of heroes and heroines who are available to us, and the seeming decline in the heroic and virtuous, the admirable and the exemplary, especially for the younger generation to emulate.

"Daniel Boorstin, a social historian, wrote a provocative book a few years ago entitled 'The Image: A Guide to Pseudo-Events in America.' In it he maintains that America has badly misled itself in its quest for heroism. He says that we have exaggerated our estimate of how much greatness can be found in individuals representing the human species, and we have exchanged older forms of greatness for a new kind of eminence. A new creature has

pushed aside heroes and saints and martyrs in our culture. This new creature is the 'celebrity.' 'A celebrity,' writes Boorstin, 'is known for his well known-ness.'

"Two centuries ago, when a great man appeared on the scene, people would look for the purposes of God in him, but today, when a great person appears on the scene, you look immediately for his press agent. I suspect the problem is not that we expect too much of our leaders and our heroes, but rather that we settle for too little.

"Country music fans may recognize the name of singer/songwriter Paul Overstreet. Many of his lyrics and melodies bring out the best within us and among us. There is one song in particular that speaks to this subject and the title is 'Heroes.' Its lyrics go something like this: 'Heroes come in every shape and size, making special sacrifices for others in their lives. No one gives them medals, the world don't know their names, but in someone's eyes, they're heroes just the same.' I think Overstreet is on to something.

"A true hero is a person who is willing and glad, on occasion, to make sacrifices for others. A hero is a person who stands for what is right instead of easy, who values principles above popularity, and there have been many such

people for us in our past, our present and also in our future.

"But we must look for them and honor them when we discover them. Because we will not likely find them in the media or in movies. And yet, as individuals as churches, as communities or institutions such as Lees-McRae we have people to whom we are obligated, people who have embraced causes that were worth living for, that were worth sacrificing for, and in some cases perhaps, even worth dying for. Some of the names and faces we recognize, like Edgar Tufts, or H. and Margaret Neal, the V. Canons, Roma Melton, and a host of others. We're honored to be in their presence and to be their beneficiaries. They have volunteered their time and energy and money to improve our common life by their investment in this place, and they have willingly taken a back seat so that others might shine.

"So it is good that we stop to recognize and celebrate our founders and our ancestors. To see, simply, how much obligated we are to so many different people. I would invite you, not simply to honor these people, but also to emulate them in your own lives and to realize that within this room are the founding fathers and founding mothers of generations yet unborn."



tors, to these pioneers and pilgrims, to these matriarchs and patriarchs. And they are, for us, nothing short of heroes and heroines.

"During a recent trip back to my hometown in Mississippi (Canton), I heard once again an expression that I have missed hearing. In Mississippi, people



Principals in Founder's Day program (l-r): James A. Stonesifer, Vice President for Academic Affairs, Speaker Daniel Massie, President Crain, George Gunn, College Chaplain, Tom Phillips, Pastor, Banner Elk Presbyterian Church.

Trustee Melton Receives Founder's Day Award

Lees-McRae College graduate and current Trustee Roma Melton is named the 1993 recipient of the Lees-McRae College Founder's Day award during ceremonies marking Founder's Day. In introducing Mrs. Melton as the honoree for the Founder's

Wordsworth into a modern idiom, 'The child is mother of the women.' Roma in every way defines the profile of the ideal recipient of the Founder's Day award. A native of this region, an alumnae of Lees-McRae College, a Trustee leader of our college, a woman who devotes her life and her life's commitments to her family, her friends, her church, her community, her college. Roma, Edgar Tufts devoted his life to the same commitments, to

meeting unmet human needs. He would be pleased by the comparison with you. He, like you, would feel the same sense of modesty that is the central component of greatness and a great person."

Mrs. Melton, who has also served as Vice President of the Lees-McRae College Alumni Council and chaired the Edgar Tufts Memorial Association, stated that it was an "honor to be in any way a part of carrying on the vision of Edgar Tufts," and com-

mented that the association with Tufts made her feel "extremely humble and extremely proud."

Mrs. Melton was the third recipient of the Lees-McRae College Founder's Day award, following Paul and Margaret Tufts Neal, and Charles VonCanon.



award, Lees-McRae College President Dr. Bradford L. Crain described her as "One among a group of heroes at Lees-McRae." "Roma Melton is a child of the mountains. She is a child of Lees-McRae. To turn the wonderful insight of the poet William

and Friends at Founder's Day. Mrs. Melton with son Stephen and Linda Melton, Charles and Aileen VonCanon. Banner Elk Mayor VonCanon won the 1992 Founder's Day Award.



Dr. Daniel Massie Awarded Honorary Doctorate

Dr. Daniel W. Massie, senior minister of the First Presbyterian Church of Kingsport, Tennessee and chairman of the Lees-McRae College Board of Trustees, was awarded an honorary "Doctor of Divinity" degree during Founder's Day ceremonies.

In presenting Massie with the honorary doctorate, Lees-McRae President Dr. Bradford L. Crain made the following comments:

"As Trustee Chairman of the Academic Affairs Committee for several years, you demonstrated both the deep knowledge and appreciation of the educational mission of Lees-McRae College. Your leadership was strong and sure.

"As Vice Chairman of the Board of Trustees for two years, your counsel and wisdom were certain guides as Lees-McRae matured into a baccalaureate college.

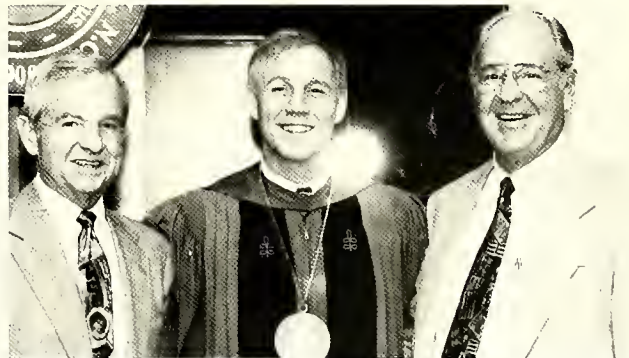
"Now, as Chairman of the Board of Trustees, you inspire us

with your words, lead us with your decisions, and make us believe that our college is good and destined to be even better. We all profit from our association with you and respond to your nurture for us. As a churchman of prominence, a family man of love, and a friend with a wonderful blend of modesty, good humor and confidence. Danny, it is our honor to present you with the Honorary Degree, Doctor of Divinity.

"With your life devoted to the purposes of God, the Doctorate of Divinity is an appropriate recognition. We present it to you tonight in hopes that the diploma will hang prominently and with pride and that the hood will be worn with your knowing that its embrace is the embrace of friendship."

Upon receiving the honorary degree, Massie spoke of the pride of receiving such an honor. "I can't say what this college has

come to mean to me and my family over the past eight years. I am proud of what it represents in terms of my relationship to this special place."



Former trustees Jack King and Sam Anderson participated in the 1993 Founder's Day program.

Homecoming '92

Homecoming 1992 was observed on a brilliant fall day amid the colorful and regal splendor of the autumn leaves. Fred I. Dickerson (pictured right), alumnus and legendary coach at LMC, served as Grand Marshall. Capacity crowds participated in the parade, games, picnics, class reunions, and alumni and Homecoming dances.



At right: Teresa Harris cries tears of happiness moments after being named the 1992 Lees-McRae College Homecoming Queen. Harris, who is an integral member of the Lady Bobcat basketball team, was escorted by Terry Harriston. Second runner-up was Shela Moffett and first runner-up was Jennifer Dickinson.



1992 LMC Homecoming Court:
Seated (l-r): Jennifer Dickinson, Amy Johnson, Shela Moffett, Rhonda Watson. Standing: Beth Dixon, Teresa Harris, Waynette Gentle, Michelle Halsey, Hollie Ferguson.



The Homecoming parade meandered its way through the town of Banner Elk and LMC won Homecoming contest against West Virginia Tech before a capacity crowd of alumni, fans, and students.



William Bake prepares for a rather closely trimmed haircut from fellow student and part-time barber Bryan Abner. Bake received the most votes in the form of monetary contributions in a fundraiser for the American Heart Association to have his head shaved during halftime of the Homecoming football game. Other finalists, who retained a full head of hair, included (at left) LMC Professor Dr. Charla Rae Armitage, Director of Intramural/Activities Todd Gambill and student Will Sykes.



Halloween Carnival

The annual Halloween Carnival was inaugurated over two decades ago by the Order of the Tower to not only provide college students with all kinds of fun activities, games, auctions, and a costume contest, but to give the children of the Banner Elk community a safe haven for tricking and treating.



Order of the Tower

The Order of the Tower is a carefully selected group of outstanding students who serve the college and help promote a better relationship between the students and faculty. The members act as marshals for graduation, serve as orientation guides for incoming freshmen, and act as hosts whenever the administration needs assistance. They host an annual reception at Homecoming for returning alumni, enter a float in the Homecoming Parade, sponsor the annual Halloween Carnival and a Christmas party for the children of Lees-McRae College employees. The club presides over the annual Honors and Awards program, concluding the evening with a reception for awards recipients, faculty, and administration.

At left: Front row (l-r): Sherry Burleson, Soko Nozawa, Betsy Hall, Teng Vengchiem, Mary Ann Abrusci. Second Row: Wayneette Gentle, William Bake, Chris Arnold, Caryn Wise, Julie Oliver, Beckie Schwefel, Sponsor Larry Shook. Back row: Sponsor Susie Sheffield, Trip McKinnon, Rusty Smith.



Betsy Hall
President



Rusty Smith
Vice President



Mary Ann Abrusci



Chris Arnold



William Bake



Sherry Burleson



Wayneette Gentle



Trip McKinnon



Julie Oliver



Beckie Schwefel



Teng Vengchiem



Caryn Wise

Student Government Association

The purpose of the SGA as stated in the constitution is "to unify the student body in the common goal for self-government in order to assume responsibility in dealing effectively with matters of student affairs, to perpetuate the best traditions of the college, and to strengthen the cooperation among students, faculty, and administration." The SGA Parliament supervises campus activities and offers suggestions to the administration for improvement in campus life.

At right: SGA "Club of the Year" - The award was given to the SGA at a banquet celebrating the contributions of LMC clubs. SGA President John Hinnant accepts the award from Grace Woody, Student Services Office Manager and banquet organizer.

SGA Executive Committee: Andy Nevil, John Hinnant, Mandy Gadd, Will Sykes.



The Student Government Association held its first Question & Answer Forum with the LMC Vice Presidents. After the popularity of the Q & A period another was held in the spring and was moderated by Parker Grubbs.



SGA President John Hinnant moderates the Question & Answer Forum.



SGA Named "Club of the Year" ... End Year



Mandy Gadd
SGA Secretary

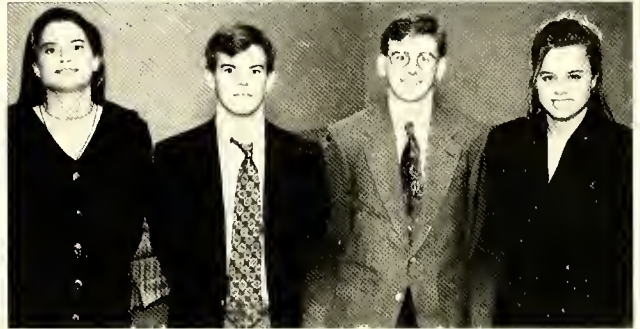


Andy Nevil
SGA Vice President



Freshman Class Officers (l-r): Kim Mattox, Treasurer; Brian Sutton, Secretary; Gary Chesno, Vice President. (Not pictured: Daphne Fitzpatrick, President)

Not pictured: Will Sykes, SGA Treasurer.



Sophomore Class Officers: Michelle Gardner, Vice President; Parker Grubbs, Treasurer; Paul Stevenson, President; Beth Dixon, Secretary.



Allison McDonald
Senior Class President



Stephanie Disher
Senior Class Vice President



Chris Arnold
Senior Class Secretary



Angela Holley
Senior Class Treasurer

...nn Hinnant and Andy Nevil
...re among a group of twelve
...students who volunteered their
...e to work for the Habitat for
...manity housing under
...construction in nearby Newland. The
...dent work day was organized
...the SGA. Will Sykes (above)
...l Beth Dixon took part in the
...bitat work day during follow-
...weeks.



Clint Carraway
Junior Class President



Waynette Gentle
Junior Class Vice President



Mandy Poplin
Junior Class Secretary



Dena Moyer
Junior Class Treasurer

With Whirlwind of Activities

Phi Theta Kappa



Installed at Lees-McRae in 1932, the objective of Phi Theta Kappa is to promote scholarship and develop character. To be eligible, students must have an overall 3.4 average and must be of good moral character and possess leadership ability. Members are selected after the first semester of each year and must maintain the required average to retain membership.

PTK Members: Front row (l-r): Kristen Baucom, Emily D... Gayle Farina, Misty Wilcox, S... Second row: Marsi Hellard, Mich... Banner, Soko Nozawa, Mary... Abruski, Luke Gravitte. Th... row: Penny Ward, Melissa T... der, Alexandra "Sasha" Zyri... va, Tonya Stephens, Adv... Allen Speer, Jason Jones. B... row: Michael Hacker, M... Umphreys, Fred Petke, Ch... Arnold, Advisor Jim Stonesifer

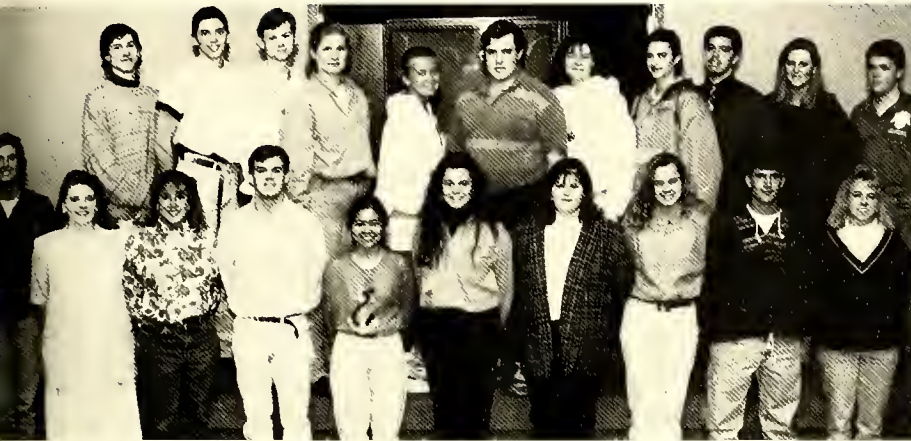
Alpha/Delta Psi Omega was very active over the year. In addition to the normal participation in productions, the members provided many service projects for the college and the community including performances of a children's show for the surrounding elementary schools.

Alpha Delta Psi Omega



Alpha/Delta Psi Omega Members: Front row (l-r): Dr. Charlotte D'Armond, Chad Benton, Dale Friese. Second row: Julie Farthing, Beth McGowan. Third row: Burlene Ness, Brad Watson, Brittany Hernd... Swain, Amy Wilson, Megan Kinary. Back row: Jen Moody, Alyson Lowe, Shannon Taylor, Tony Aru... Michelle Banner, Julee Marshbanks, Tim Reynolds, Erick Bayne, Chris Pearce, Joe Magid. APO President Dale Friese; DPO President Jen Moody; Sponsors: Dr. D'Armond, Cindy Stonesifer.

Student Ambassadors Club



The Student Ambassadors Club has been a vital asset to the Admissions Office. Responsibilities include giving tours of campus to prospective students and their families, entertaining and keeping prospective students in residence hall rooms, and projecting a positive image of Lees-MacRae College.

Pictured at left: Front row (l-r): Samantha Beckman, Kim Mattox, Kristy Kind, Parker Grubbs, Teng Vengchiem, Waynette Gentle, Emily Davis, Beth Dixon, Carter Todd, Leslie Ward. Back row: Mike Stimpson, Jason McGill, Mark McKinney, Julia Callarman, Sasha Zyrianova, Dax Witherspoon, Melody Musick, Noel Barnwell, Michael Hacker, Beth Austin, William Bake. (Not pictured: Bethany Baumgardner, Gary Chesno, Michael Dowdle, Jennifer Hilton, Regina Hoilman, Troy McCormick, Joshua McLamb, Patrick O'Brien, Paul Stephenson, Steve Tollie, Sponsor Catherine Button.)

Organization of African-American Students

The Organization of African-American Students has its primary function the interests and concerns of the black student and is open to every student on campus. The OAA was active in Homecoming week activities and held the 3rd Annual Celebration of Black History Month, dedicating it in loving memory to classmate and

friend Gary Phillips who was also a member of OAA. Sponsors of the organization are: LMC Professor Mary Wilgus and ASU's Willie Fleming.

Front row (l-r): Charles McFadden, Teresa Harris, Angela Holley (Secretary/Treasurer), Roger Hayes (President), Keith McInnis. Back row: Rama Nightingale, Eric Bryan, Lamont Calhoun (Vice President), Mike Morton, Juan Shackelford.

OAA

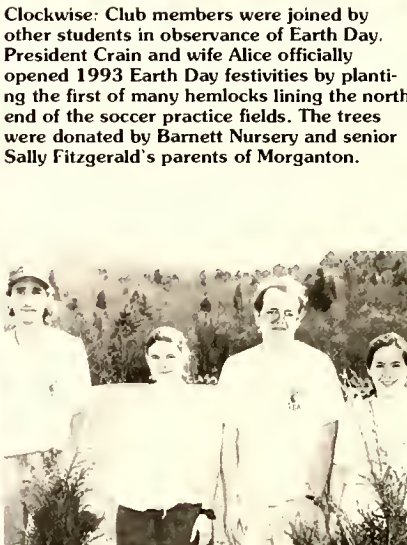


Roger Hayes presided over the 3rd Annual Celebration of Black History Month and introduced speaker Dr. Dudley Flood.

S.A.V.E.

Students Against a Vanishing Environment (S.A.V.E.) took part in a campus beautification effort as well as an environmental project by planting trees on the LMC campus during Earth Day. The inaugural tree planting project is something S.A.V.E. members hope to perpetuate in observance of Earth Day each year.

Pictured at right (l-r): Fred Petke, Mike Stimpson, Betsy Hall, Christine Harris, David Walker.



Clockwise: Club members were joined by other students in observance of Earth Day. President Crain and wife Alice officially opened 1993 Earth Day festivities by planting the first of many hemlocks lining the north end of the soccer practice fields. The trees were donated by Barnett Nursery and senior Sally Fitzgerald's parents of Morgantown.

Spring Formal



Waynette Gentle



Parker Grubbs



Angela Holley



Kristy Kind



Deana Magaw



Kim Mattox



Beth McGowan



Christie Simonds



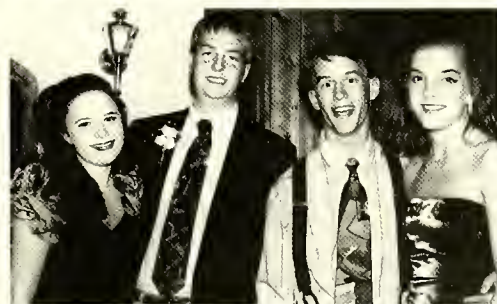
Kelvin Wilson



Spring Formal King and Queen Chris Arnold and Beth Dixon



At right: Pat Smith crowns Beth Dixon, Spring Formal Queen. Below: The band "Fun at the Zoo" performed for the Spring Formal.



Performing Arts

Performing Arts is one of the "flagship" majors at Lees-McRae. During the academic year students may be involved in two musicals, two "straight" plays, student-directed one-acts, a traveling children's show, as well as several other minor productions. In the summer students may participate in Lees-McRae's very successful professional summer theatre.



LMC Holds Fall Concert - The various and divergent groups within the Performing Arts Department had a chance to shine during the annual Fall Performing Arts Concert. Groups representing the Cloggers, the Highlanders, the Vocal Ensemble and the Dance Company displayed their talents along with solo performances by Jodi Bost (pictured above) and Ron Brown.

The Lees-McRae College Performing Arts Department traveled to several North Carolina high schools, performing for drama, music and dance students in North Wilkesboro, Charlotte, Hendersonville and Boone. Over thirty LMC Performing Arts students were with the group, and Lecturer in Music at Lees-McRae James Taylor, who organized the trip, called it a "great opportunity for our students to travel in a professional tour situation as well as be involved as ambassadors for the college."

The annual Performing Arts Fall Concert showcases the talent within all of the performing arts groups: The Highlanders, song and dance troupe; championship Lees-McRae Cloggers; LMC Vocal Ensemble; and LMC Dance Theatre, plus, this year Dr. Janet Speer, head of the Performing Arts Department, directed a special presentation by her "Dance and Choreography for the Theatre" class.

The Highlanders presented a number entitled "Le Jazz Hot Medley" featuring such jazz greats as "Hit Me With A Hot Note and Watch Me Bounce" and "It Don't Mean A Thing If It Ain't Got That Swing." Also, the same group presented a Surfin' USA Medley of popular 1960's "beach music."

Forty students participated in the Fall Concert. Other events for the year included: The Candlelight Christmas Show, which is a delightful way to get into the holiday spirit; and in the Spring, the LMC Choir Concert.





Highlanders Bring "Santa Medley" to the Candlelight Christmas Show at LMC. The song and dance group, The Highlanders (under the direction of Steve Parrish), along with the Cloggers, Vocal Ensemble, and other members of the Performing Arts Department were featured along with the Avery County Middle School Choir (directed by Donna Yates) during the 1992 Candlelight Christmas Show in Hayes Auditorium.



The sights and sounds of Christmas filled the air during the annual Candlelight Christmas Show. The event is in its tenth edition.

The Candlelight Christmas Show was especially colorful this year, with music of the season, presentations by our handbell choir and, of course, the traditional candlelight service at the concert's end where students present their Christmas wishes and then blow out all of the candles.

In addition to the performing arts groups, there were two special presentations at the concert, one performed by the country/bluegrass music group Tapestry which is composed of members of the Lees-McRae faculty, and the other a vocal presentation by members of the Avery County Middle School Choir.



(Above) Jim Taylor directs the LMC vocal group during the annual Candlelight Christmas Show; (at left) members of the spring dance concert, Beth McGowan and Donald Laney; Eugene Sexton, Brad Watson, and Laney.

Performing Arts

The directing students in Lees-McRae College's Performing Arts Department presented eight one-act plays at various locations on the Banner Elk campus. The plays, most of which lasted about one-half hour each, ranged from musical comedy to suspense to children's fantasy.

The plays included: "The Boor" by Anton Chekov (directed by Ron Brown); "Red Peppers" by Noel Coward (directed by Mike Hannah); "Medusa's Tale," a Greek myth from Medusa's point of view (directed by Tessa Willoughby); "The Mirrorman" by Brian Way, a children's play in which the audience becomes part of the cast (directed by Beth McGowan); "Next" by Terrence McNally (directed by Gina Borgese); "Games" by Peter Filchia, presented by Avery County School actors (directed by Scot Pankey); and "Something Unspoken" by Tennessee Williams (directed by Michelle Banner).

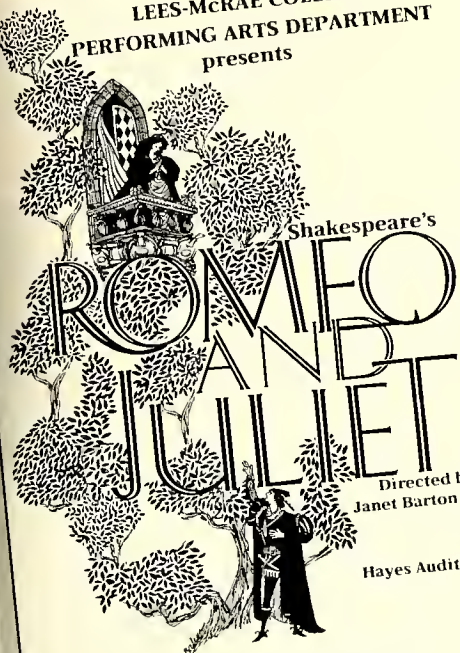


Rehearsals for one-act plays.

(Below) LMC One-Act Participants - A total of eight one-act plays were presented at Lees-McRae College and all of the participants are pictured along with several Avery County High School students.



LEES-McRAE COLLEGE
PERFORMING ARTS DEPARTMENT
presents



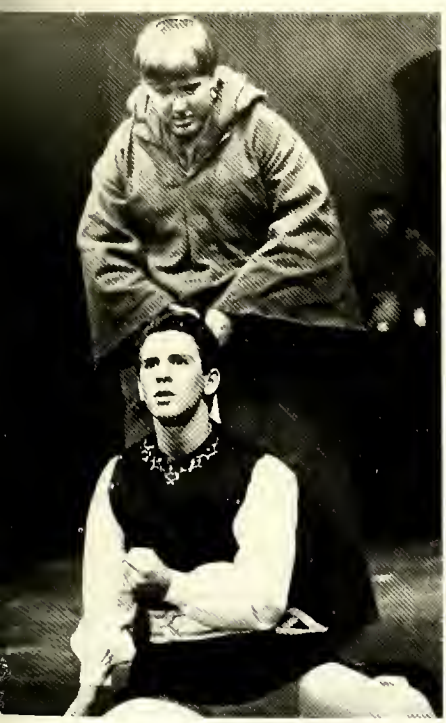
Shakespeare's
**ROMEO
AND
JULIET**

Directed by
Janet Barton Speer

Hayes Auditorium

October 28-November 1, 1992
Wednesday-Saturday 8:00 P. M. Curtain
Sunday 3:00 P. M. Curtain

The romantic tale of star-crossed lovers "Romeo and Juliet", by William Shakespeare, starred lead actors Penny Henderson (Juliet) and Raymond Jones (Romeo).



William Shakespeare's tale of two ill-fated lovers, "Romeo and Juliet," was presented in October in Lees-McRae's Hayes Auditorium. "Romeo and Juliet" is the story of two aristocratic families in which just about every family member, even their respective servants, are feuding. The feud at times gets out of hand and some people get killed. It is into this feud that the love story of "Romeo and Juliet" is woven.

"Romeo and Juliet" starred Raymond Jones, from Vero Beach, Florida, as Romeo, with Penny Henderson of Abingdon, Virginia as Juliet. Other cast members included; Tim Reynolds as Mercutio, Romeo's best friend; Mike Hannah as Capulet, Juliet's father; Michelle Banner as Lady Capulet; and Julee

Marshbanks and Ron Brown.

One of the highlights of "Romeo and Juliet" was the costuming. The students spent hours upon hours working on the costumes which were all designed by Tessa Willoughby, the show's Costume Designer. So much time went into the costumes and the sets for "Romeo and Juliet." Everything was very lavish!

Aside from the five public performances of "Romeo and Juliet," the theatre students presented the show in several special performances for school children from a wide geographic area, all of whom were "bused in" for the play. These students represented schools from as far away as Abingdon, Virginia and Winston-Salem.



Lees-McRae College
 Performing Arts
 Department

presents



PIPPIN

Book by Roger O. Hirson
 Music and Lyrics by Stephen Schwartz

Hayes Auditorium
 September 30 and October 1-3 8:00 P. M.
 October 4 3:00 P. M.

Lees-McRae College's Performing Arts Department opened its fall academic season by bringing "Pippin," the winner of five Tony awards, to the stage at Hayes Auditorium.

"Pippin" deals with a young person trying to find answers in life and a lot of LMC students in the musical were also in that phase and identified with it.

Milestones associated with this show included a couple of firsts, according to Dr. Charlotte D'Armond. "Kacy Crabtree (Lees-McRae Assistant Professor of Dance) choreographed her first complete theatrical production at LMC, and 'Pippin' represented my directorial debut in Hayes Auditorium," she said. The year 1992 also represented the 20th anniversary of the show.

"Pippin" begins in the year 780 A.D. and is set in the not so Holy Roman Empire (or thereabouts). The show featured a broad cross section of student talent, with a freshman (Eric Bayne) taking the lead.

Pippin (Chad Benton) is the first-born son of the Emperor Charlemagne. An extraordinary young man, talented and handsome as he is, he nevertheless becomes obsessed with the "need to be completely fulfilled."

At the same time that Pippin is Charlemagne's son, he is also a modern young man, and although the musical is set in the 8th century, it evokes modern times as well.

While trying to "find himself," Pippin either fails or becomes bored with his attempts as a scholar, soldier, lover, revolutionary, domestic and even as a ruler of an empire. He will not settle for anything less than the extraordinary, but in the end does settle for the ordinary in the persons of a wife and child, and perhaps lives happily every after.

The cast included: Erick Bayne (Leading Player), Chad Benton (Pippin), Joey Griffin (Charles), Jason Hatcher (Lewis), Alyson Lowe (Fastrada), Cindy Stonesifer (Berthe), and Beth McGowan (Catherine). The "Ensemble of Players" included: Jodi Bost, Jeff Goff, Donald Laney, Carl Pitman, Tabatha Rammer, Gene Sexton, Brian Watson, Demetrius Aristotle Floyd, Brittany Herndon-Swain, Megan Ann Kiniry, Jennifer Moody, Susanne Singletary, Shannon R. Taylor.



Pictured above is Pippin (Chad Benton, left) receiving encouragement from The Lead Player (Erick Bayne) to pursue his dreams.





"Eleemosynary," a stage production centered heavily on the relationship between an eccentric woman and her offspring, was presented by the Performing Arts Department.

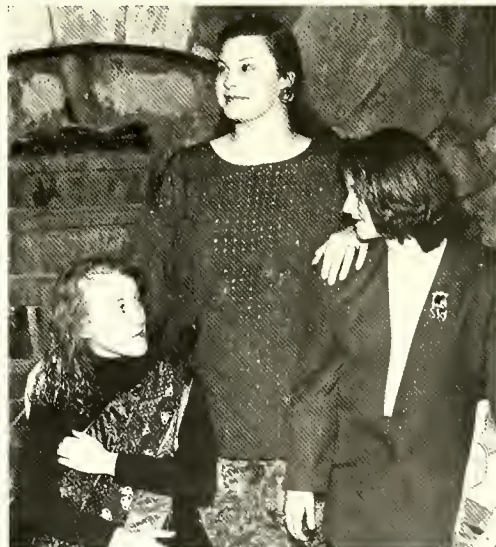
"Eleemosynary" is a character study of three women, an eccentric grandmother named Dorothea, her daughter Artie, and Artie's daughter Echo. A short play done in a very stylized fashion, the play depicts how Dorothea has affected the life of her daughter, who is estranged from her despite the fact that she has trusted her with the raising of Echo. Basically, the play is about relationships and how, despite our determinations not to be like our parents, we find ourselves becoming like them in spite of our intentions.

"Eleemosynary," which Webster defines as "of or supported by gifts, charity," was written by Lee Blessing, who also authored the Broadway hit "A Walk in the Woods." It starred Lees-McRae students Julee Marshbanks as Dorothea, Amy Wilson as Artie, and Burlene Ness as Echo.

Chad Benton, a performing arts major and star of "Pippin," directed "Eleemosynary" with the full support of the Performing Arts Department. Chad decided to stage "Eleemosynary" in LMC's Pinnacle Room instead of the traditional Hayes Auditorium. In this setting, the audience can sit "environmentally," with the action taking place all around them.



Pictured above: Dorothea (Julee Marshbanks - seated) plays with and protects her granddaughter, Echo (Burlene Ness - on the floor playing with a homemade wing). Artie (Amy Wilson - standing) tries to make sense of her family but finds Dorothea's protection of Echo too illogical.





The Lion in Winter

by James Goldman Directed by Jim Martz

MARCH 31-APRIL 3, 8:00 P. M.
APRIL 4, 3:00 P. M.
1993

HAYES AUDITORIUM
LEES-McRAE COLLEGE

presented by
Lees-McRae College Performing Arts Department

Pictured are three of the main characters during rehearsal of "The Lion in Winter" (l-r): Tessa Willoughby as Eleanor of Aquitaine, Tim Reynolds as Henry II, and Megan Kiniry as Alais.



The Performing Arts Department presented the comic drama "The Lion In Winter" in Hayes Auditorium. "The Lion In Winter" was directed by Lees-McRae Assistant Professor for Performing Arts Jim Martz.

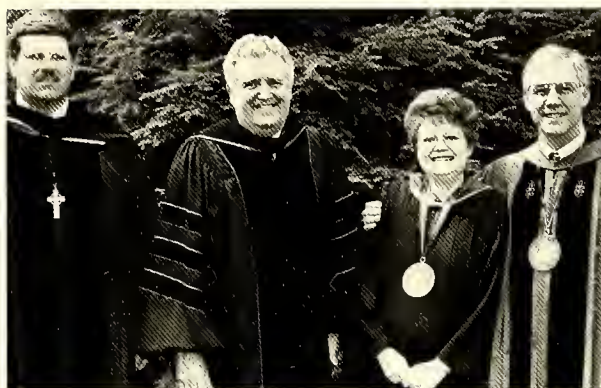
King Henry II of England has had three sons by Eleanor of Aquitaine: Richard, Geoffrey, and John. He wants to keep his kingdom after his death, but since all three sons want to rule it, it is likely to be torn apart by revolution. Henry favors the youngest son (later King John of Magna Carta fame) and Eleanor favors the eldest (later Richard the Lion-Hearted). The middle son hopes to play both ends against the other and come out on top. Henry would like to have another heir by his mistress, but that would only add to the list of contenders. Uneasy is the head upon which the crown lies, and uneasy is the truce between a matchless king and queen. So the king invites the entire family for a Christmas holiday, includes his mistress, and asks the King of France along for the ride. Who will come out on top, or even alive? There are many comic twists and turns before the answer, and the final curtain falls.

Cast members included: Tim Reynolds as Henry II; Tessa Willoughby as Eleanor of Aquitaine; Megan Kiniry as Alais; Brad Watson as Richard; Matt Handley as Geoffrey; Joe Magid as John; and Jason Hatcher as Philip, King of France.



Students pictured during rehearsal (l-r): Brad Watson (Richard), Matt Handley (Geoffrey), Reynolds (King Henry II), and Joe Magid (John).

Safer, Shaw address 1993 LMC Graduates

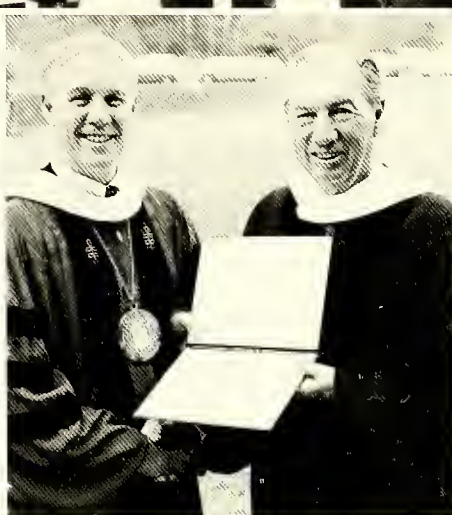


The featured speaker during Lees-McRae's baccalaureate service was Dr. Angus Shaw, III, the senior minister of First Presbyterian Church in Johnson City, TN. The central theme of Shaw's address to the graduates attending the Saturday morning service at the Banner Elk Presbyterian Church was to "live life with enthusiasm."

Above: Shaw speaks.
Above right: Principals in Baccalaureate Service (l-r): Rev. Tom Phillips, Dr. Angus Shaw, Roma Melton, Dr. Brad Crain.



During the commencement, honorary doctorate degrees were awarded to (at right) Safer (Doctorate of Humanities) and (above left) Lees-McRae President Dr. Bradford L. Crain (Doctorate of Education). Above right: Principals in Graduation Exercises: College Chaplain George Gunn, Trustee Chairman Dr. Daniel Massie, Dr. Crain, John Safer, Alumni President Dick Weaver.





Dr. Daniel Massie, Trustee Chairman (left) awards Dr. Crain an Honorary Doctorate of Education degree while family members, wife Alice and daughter Emily, look on.

Show: "Live Your Life With Enthusiasm"

"There is one vital ingredient in life without which you or I would very seldom achieve success," said Shaw. "It is an ingredient that often marks the difference between failure and success. That vital ingredient in life is enthusiasm. Sir Edward Appleby, a Scot Physicist and a Nobel Prize winner, was once asked the question, What was the greatest contributing factor to the many things he had accomplished? And very candidly he answered that it was 'enthusiasm.' He went on to say that he rated enthusiasm even above professional skill.

"Charles Schwab, who certainly had his effect on the industrial life of this nation made this statement: 'A man can succeed at almost anything for which he has unlimited enthusiasm.'

"Enthusiasm has been called the spice of life. It has been pointed to as that essential quality that makes the difference in the classroom, on the athletic field, in the business office, in the home, and in the church. Perhaps we can appreciate better the essential qualities of enthusiasm if we consider the history of the word. As we take this English word, enthusiasm, and place it under our linguistic microscope we find a remarkable quality. It is made up of two Greek words: en and theos (In God). And we come to realize as we consider the word, that enthusiasm is important in all aspects of life because it has a theologic, spiritual importance. Someone once said that enthusiasm is a kind of faith that has been set afire."

In Shaw's closing remarks he turned to the Book of Ecclesiastes in the Old Testa-

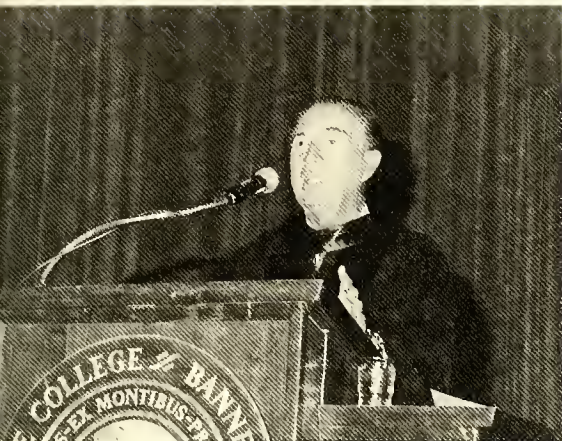
ment of the Bible and paraphrased some of Solomon's writings: "There are five absolutes that you need to remember in life. Number one, every single one of us will ultimately deal with God. Number two, you and I do not know what tomorrow brings. Number three, the certainty of death. Number four, evil resides in the human heart. And number five, there is hope for the living.

"I would like also to suggest three responses to those absolutes. Number one, accentuate the positive. Number two, live a clean life. And number three, live your life with enthusiasm."



Graduates brought apples to the stage while receiving their degrees at graduation exercises. (Above) Valedictorian Katrina Vannoy Miller receives the highest honor.





Safer Urges Students To “Live By The Golden Rule”

Washington, DC real estate developer, financier and sculptor John Safer is the featured speaker during Lees-McRae College's Sixty-Third Commencement Exercises at Hayes Auditorium on May 8, 1993. Sixty-two students were among the fourth class to graduate from Lees-McRae with a baccalaureate degree.

In introducing Safer, Lees-McRae President Dr. Bradford L. Crain described him as “a man who can imagine farther than most of us, a man whose life suggests that with the pre-balance of grace, power and hope, truth and beauty, and truth can be captured.”

The following is a portion of Safer's remarks: “This obviously is an important day but it is particularly unique in a specific way. Normally changes connected with life and living things take place gradually. But today is an exception. Today marks a clean, sharp break from one phase of your life to another. Until now you have been trained. Things have been planned for you. Someone else has been taking the responsibility. Tomorrow, it all changes. Throughout just about all of your life you have been in school. You are expected to follow certain rules. This day really is a dividing line in your life. New expectations, new responsibilities, new rules. So this is a day you will almost certainly remember. This is the way we mark it with ritual and ceremony. I think the occasion also puts on me a rather awesome responsibility

to say something which you will feel is worthy of this day and worth remembering. So what I will try to do is distill the best that I have learned, and tell you of some concepts, thoughts and words I have encountered in my life that I have found to be worth living by.

“That means that I am going to offer some advice. Of course, advice has no effect until it is applied. Since advice must be applied, and since each individual applies it differently, advice, even from some of history's greatest minds, can sometimes be very confusing. Let me give you some examples.

“Henry Thoreau, the American writer and thinker, once wrote some powerful lines. He said, ‘If a man does not keep pace with his companions, perhaps it is because he hears a different drummer. Let him step to the music which he hears, however measured or far away.’

“Another thinker, Aristotle, one of the greatest of all philosophers, urged ‘moderation in all things.’

“Those are two profound pieces of advice. Unfortunately, they are contradictory. You can't follow both. We can choose what to do and when to do it by exercising that remarkable ability called judgment. That is my first major point. Use your judgment.

“As you go through life you will use your judgment to analyze and apply advice as you receive it. As you do that you reshape the advice to fit your own needs and you do it in accordance with

your answer to the question, what do you want? What are your goals in life? You can, of course, tailor your life toward the achievement of your goals. So you must ask further questions of yourself. What is important to me in life? And when you find yourself in a crisis situation of decisions you will probably seek advice. If it is a major crisis you will probably seek advice from several sources. Humans being what they are, you will almost certainly receive differing pieces of advice. So that even with the best of friends and the wisest counselors, you will have to fall back on your judgment to decide which, if any, advice to follow by using your judgment.

“To sum up what I have been trying to cover, you will use and apply any advice you receive by the exercise of your own judgment. Train it, use it, learn to rely on it, and your life will be the better for it. You will make of your lives what you can. If you acquire money, think about using some of it to help others. If you can contribute of yourself or your accomplishments to society, I believe that you will find the highest degree of satisfaction. I believe that the pursuit of gold may indeed yield gold, but it won't of itself lead to a worthwhile and rewarding life.

“I will conclude with one more reference to gold, the golden rule. If you live a life wherein you ‘Do unto others as you would have them do unto you,’ you won't go far astray.”

1992-93 In Review ...

Athletics

Women's Soccer: The Fabulous Five



It was a season of progress for all sports teams under the Lees-McRae College banner and leading the way were the women's soccer and basketball programs.

Lees-McRae Head Women's Soccer Coach Ried Estus, who has been at the helm of the program since its inception in the mid-80's and has experienced unparalleled success in compiling a 94-20-2 record since that time, called his 1992 squad the "most cohesive group I've ever had." The '92 team, which fell to top-ten ranked Elon in the first round of the District 26 playoffs in a hard-fought 2-1 decision, included the "Fabulous Five"; seniors Jeanne Cobbe, Julia Callarman, Shela Moffett, and Allison McDonald (Carolina's Intercollegiate Athletic Conference "Player of the Year").

The women's basketball team left a trail of destruction through District 26 during the regular season, setting numerous team and individual records along the way to compiling a 26-4 record. The Lady Bobcats found out how hard it is to beat a team three times in one season as Catawba defeated Lees-McRae 88-80 in the second round of the district playoffs.

Ontaroga LEES-MCRAE



Two-time All-District 26 performer
Eichler ended her career with the
highest number of points scored in
either the men's or women's program
by scoring 1,998 over four years.

The steady progress continued with
the Lady Bobcat volleyball team under
the direction of Charles E. "Fish" Gup-
ton. Lees-McRae, which finished the
1991 season with a 22-15 record,
improved to 17-11 in 1992, and
exceeded Gup-ton's expectations. "This
season was better than I expected.
The increased depth on the bench and
the quality of the freshmen class helped
take us to another level. With a few
more quality freshmen next year we
could be ready to compete in the upper
echelon of the NAIA."

Taking more measured steps of
progress were the football and men's
basketball programs. The gridiron Bob-
cats captured the first on-the-field victo-
ry against four-year competition, taking
a 28-6 decision over West Virginia Tech
in 1992. Even though it would be the
first win of the season, Head Coach
John Pate was "thrilled." "We executed
our game plan, did good things on each
side of the ball, and gave the fans, who
were stuck by us, a victory they could
be proud of." Key performers included offen-
sive center and senior Tom Nelson, who
was named to both the NAIA All-Ameri-

can Second Team and All-American
Scholar Athlete Team, and sophomore
linebacker Ronnie Getz who made the
NAIA All-American Honorable Mention
Team.

The 1992-93 edition of the men's
basketball team was full of new faces as
seven freshmen or first year players
sued up for the Bobcats, comprising
over 50 percent of the total roster. The
enthusiasm and energy the freshmen
brought to the program buoyed the
hopes for future success for Head
Coach Jack Lytton after the somewhat
disappointing '92-'93 season. "We set
the wheels in motion this past year with
the addition of several fine freshmen
who received a great share of playing
time and responded by showing dra-
matic improvement," commented Lyt-
ton. At the head of the class is All-Dis-
trict 26 player Alphonso Keaton, Jr.
who led the team in several categories.
The Bobcats bade farewell to senior
Kelvin Wilson who ended his collegiate
career as the Bobcats' all-time leading
scorer with 1,092 points.

When the season began for Head
Men's Soccer Coach Fred LaRoche, he
promised an exciting squad filled with
an influx of talented and eager fresh-
men vying for playing time, and he
delivered. LaRoche called the ability of
the freshmen to come in and contribute

right away a "big plus." "They received
live game experience a year, or, in some
cases, two years ahead of freshmen at
other schools. It sets a solid base for us
to build on," stated LaRoche. The Bob-
cats will have a new face in goal next
season for the first time in four years as
former All-American John Clark gradu-
ated in the spring.

The 1993 season opened for the
Lees-McRae ski team with a men's
squad primed to meet the challenge of
living up to its potential and a women's
team in the first steps of a rebuilding
phase. The men's team was poised to
capture the top spot in the southern
division of the Southeaster Collegiate
Ski Conference when a knee injury in
training took out captain Alex Dewey,
and the Bobcats finished a close fourth
at the conference championships. Freshman
Melonye Trivett was the most consistent
female racer and collected two bronze
medals during the season.

The blizzard of '93, the largest snow-
storm of the century, shut out the Lees-
McRae netters for half the season. But
inclement weather (45 days of spring
rain - and two weeks of snow) was not
able to dampen the Bobcat spirit. The
women's team posted a perfect 8-0
record while the men posted a 6-2 mark
for the 1993 spring campaign.



National Championships Game Reunion. Coaches and players were recognized as the Bobcats observed the 25th year since the trip to Savannah. Pictured (l-r): Clyde "Soupy" Campbell (played in the bowl game and later coached), George Litton, Dr. Crain and Don Baker.

Lees-McRae's collegiate football tradition dates back to the fall of 1929 when helmets were optional equipment and less than twenty young men made up the first "Bulldog" team that took the field under head coach Dick Flinn. A decade later, the team changed its mascot to the "Bobcat" and the program was still winning under coach John Mackorell. Fred I. Dickerson, a star of that first-ever team in 1929, returned to his alma mater in 1933 and established himself as a "legend in his own time" by building the Bobcats into a perennial powerhouse in the Western Carolinas Junior College Conference, winning championships in 1947, '48, '49, '50, '54, and '60, and co-championships in '55 and '56. The Bobcats also appeared in three junior college bowl games: the Junior Sugar Bowl in Monroe, Louisiana (1949) and two appearances in the Golden Isle Bowl, Brunswick, Georgia (1950 and 1953).

George Litton took over the reins when Dickerson retired and during his seven year tenure directed the Bobcats to the conference crown in 1967 and to two bowl games; the National Junior College Championship Game in Savannah, Georgia in 1967 and the El Toro Bowl in Yuma, Arizona in 1968. After a two-year stint by Jim Osborne, former assistant Mike Cook took over in 1971 and led the Bobcats to the Tall Cedars Bowl in 1975. Succeeding Cook was Warren Klawiter who directed Lees-McRae to the Shrine Goober Bowl. Cole Proctor and Bill Bomar each served brief stints as head coach before Clyde "Soupy" Campbell took over in 1980. Campbell's departure ushered in the John "Mac" Bryan era which brought renewed glory to the Bobcat football program. Bryan's record speaks for itself with 43 wins in six years, including trips to five consecutive post-season bowl games.

As Lees-McRae's affiliation changed from junior college to the four-year level so did the head coaching position as John Pate was brought in when Bryan left to accept a position on the staff of Southern Mississippi University.

Exploring the Jungle of College Athletic Mascots: Lees-McRae College "Bobcats"

"The Bobcat has been the mascot for Lees-McRae for more than 50 years of intercollegiate athletics. Still in abundance in the mountainous region of Western North Carolina, it is symbolic of the sleek dignity, yet cunning, ferocious and aggressive nature of Lees-McRae athletic teams. Before the coming of the resorts of Ski Beech, Sugar Mountain Ski Resort, Grandfather Golf and Country Club, and other recreation areas that have encroached on the bobcats' territory, the wily predator fed on the abundant quail, grouse and pheasants that inhabited the area.

Now only an occasional bobcat is seen in the area of the campus that is divided by the Elk River and centered between the mountainous skyscrapers of the Grandfather, the Sugars, Beech Mountain, and Hanging Rock. Up until 1954, a live bobcat was kept in a cage at basketball games and allowed to be led on a chain at football games. But it was felt that confinement of such a noble creature was not good, and since that time Lees-McRae has relied on the Bobcat Spirit for its support. The Bobcat! What better creature of stamina, intelligence and streamlined poetry in motion to represent a college?"

What's in a Nickname? by Ray Franks



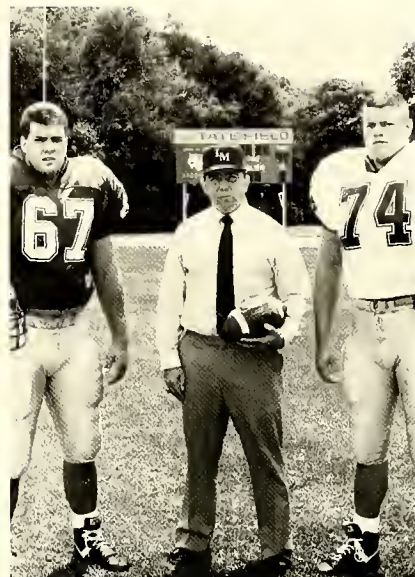
1992 Schedule

Lees-McRae 13	Catawba College	3
13	Concord College	4
14	Livingstone College	3
6	Gardner-Webb University	5
28	West Virginia Tech	
7	Newberry College	7
18	Wofford College	4
7	Mars Hill College	2
7	Elon College	4
0	University of Findlay	6





Athletic Trainers. Front row (l-r): Troy McCormick, Rita Smith, ATC; Leslie Smith, Wendy Hill. Second row: Scott Hill, Ginny Worsley, Noel Gressner.

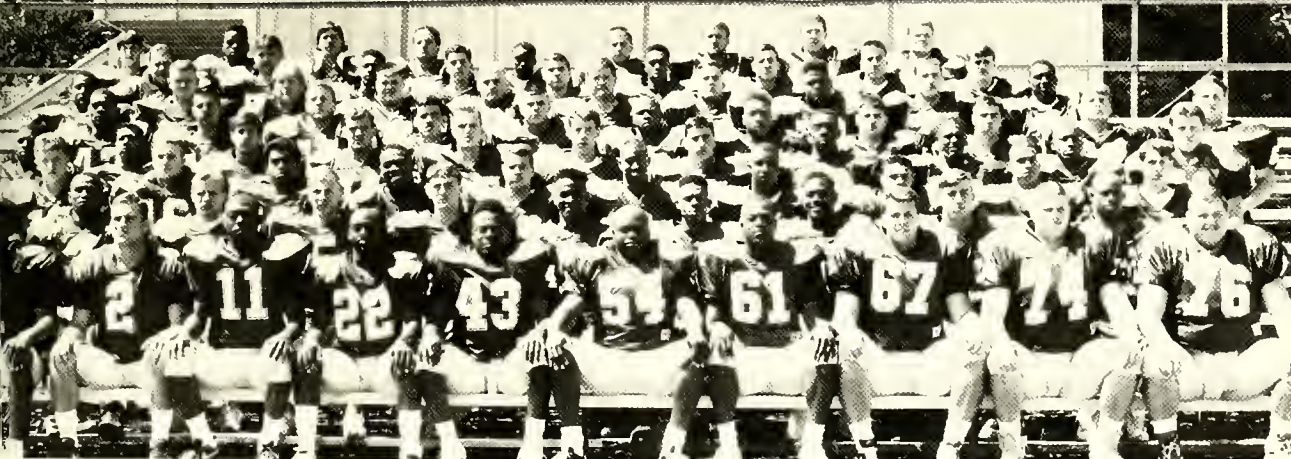


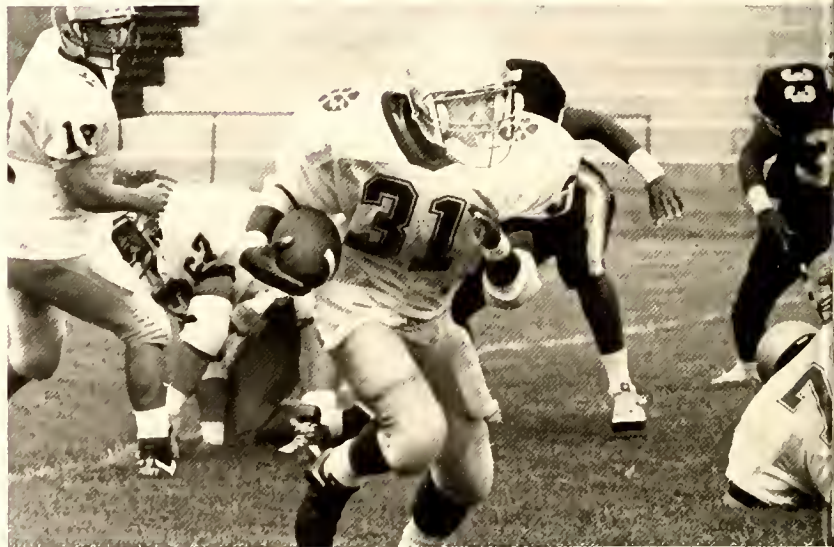
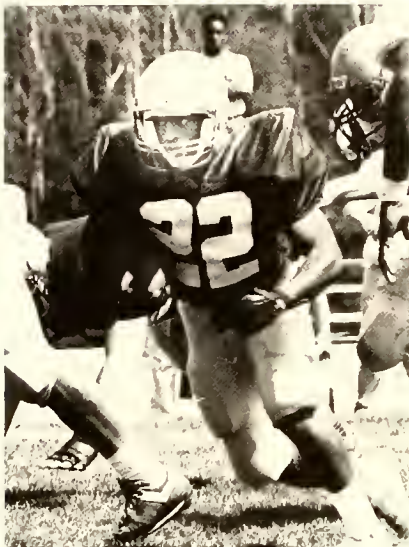
Senior captains Jerame Conkin (right) and Tom Nelson stand on Tate Field with Head Coach John Pate.



Football Coaches. Front row (l-r): Donald Price, Tom Person, Sam Mumpower, Brad Almon. Second row: Dan Higgins, Ray Gregory, John Pate, Todd Knight, Randall Bentley. (Not pictured: Byron Bell)

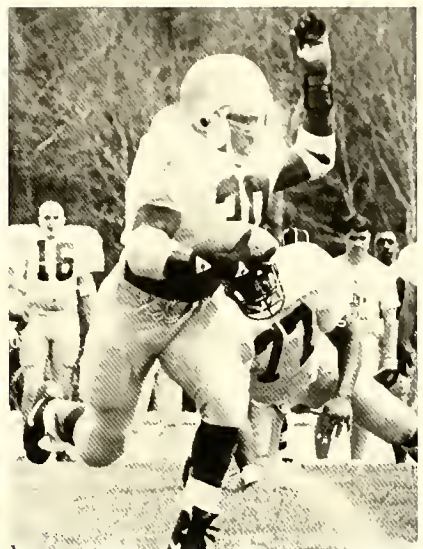
2 Bobcats. Front row (l-r): Joe Fluellen, Jon H. Moore, III, Lamont Calhoun, Charles McFadden, Alex Watson, Michael Jones, Kevin Crosby, Tom Nelson, Jerame Conkin, Roger Conkin. Other team members: Corious Thomas, Stephen Flynn, Brian Prowant, Chris Thomas, Eric Jeffries, Niko Thomas, Marcus L. Davis, Mike Callahan, Travis Hyatt, Robert Horn, Manuel Cruz, Brett Rutland, Derek Hammock, Eric Bryan, Tim Henson, John Skipper, Ramatingale, Gary Phillips, Greg Wrubluski, Jimmy Schimpf, Shannon Church, Frank Bowen, Sean Sanders, Jason Brewer, Johnny Woodberry, Scott Russo, Ronnie Getz, Andy Everhardt, Sylvester Anderson, Henry Terrell, Cliff Davidson, Clinton Cantwell, Shea Scott, John Fullwood, Kevin Benfield, Jason Gentry, Seth Townley, Arlo Wilks, Couby Stilwell, Jeff Wall, Derek Falkowski, Anthony Haire, Derrick Pearson, Ronnie Sweatmen, Todd Howland, Brian Bentley, Chad Ansbaugh, Michael Morton, Cai Bennett, IV, Jaye DeRienzo, Trevor Kracker, Joe Brotzman, Shawn Compton, Shane Jenkins.





Clockwise: Assistant coach Todd Knight signals to his defense as head coach John Pate looks on. Gary Phillips (31) rips off long gain. Jon Moore (2) puts move on opponent. Conkin boys at 280 and 300-lbs. take up a lot of room. Johnny Woodberry (42) was the workhorse for the 'Cats. Charles McFadden (22) carries on reverse.





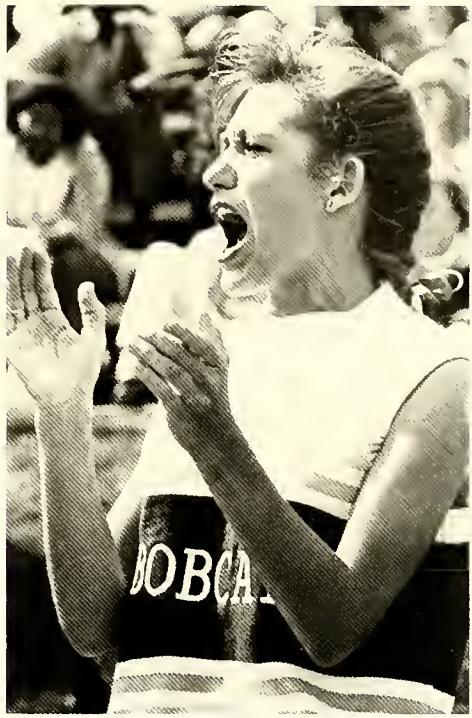
At left, Rama Nightingale (30) finds room to run on a block from Arlo Wilks (73). Below, quarterback Lamont Calhoun get protection from backs Gary Phillips (31) and Jimmy Schimpf (34).





(Left) Crowd cheers victory over West Virginia Tech at Homecoming. (Above) Woodberry and frosh quarterback Travis Hyatt (15) take off for long gainer. (Below) Veteran Bobcats: Front row (l-r): Joe Fluellen, Charles McFadden, Coach Pate, Lamont Calhoun, Jon Moore. Back row: Alex Watson, Michael Jones, Kevin Crosby, Jerome Conkin, Tom Nelson, Roger Conkin.





(Left) Jimmy Schimpf breaks loose for a long run against Newberry. (Above) Tiffany Walker cheers for the 'Cats.

12 LMC Cheerleaders (l-r): Tiffany Walker, Leslie Ward, Jennifer Hilton, Ashley Livengood, Beth Dixon, Hollie Ferguson. (Not pictured: Kacy Crabtree)



Women's Soccer

1992 Schedule

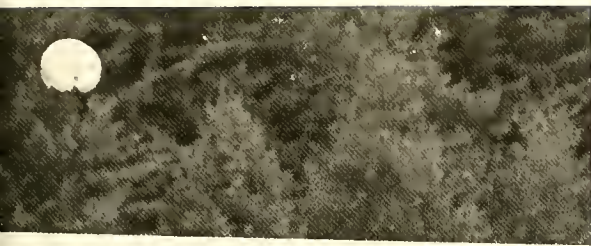
Lees-McRae	4	Tennessee Wesleyan	0
	6	University of Charleston	1
	0	Coker College	1
	8	Carson-Newman	0
	5	LaGrange College	1
	0	Berry College	1
	1	Catawba College	0
	6	High Point College	1
	5	Queens College	0
	5	Erskine College	0
	5	Tusculum College	0
	3	Gardner-Webb College	1
	3	Presbyterian College	1
	0	Florida Atlantic Univ.	2
	0	Lynn University	3
	5	St. Thomas University	1
	2	St. Andrews College	0
	0	Methodist College	1
Carolinas Tournament			
3		St. Andrews College	0
3		Coker College	0
District 26 Tournament			
1		Elon College	2



Front row (l-r): Manager Mary Eugeno, Dena Moyer, Alana Hill, Kim Watkins, Erica Pratt, Maris Ethridge, Tanya Naumann, Jeanne Cobb, Shela Moffett, Laura Spaulding. Back row: Coach Ried Estus, Kamma Roberts, Desiree Diaz, Leigh Smith, Jennifer McAvoy, Jane Shaw, Julia Callarman, Allison McDonald, Karen Van Wert, Kristi DeMeritte, Tina Heinrich, Assistant Coach Eric Terrill.

Karen Van Wert





At right: An era ended when five Lees-McRae College women's soccer players competed in the last home game of their respective collegiate careers. All five were presented plaques that read: In appreciation for four years of service to the Lees-McRae College women's soccer program and for leadership in transition to senior college level competition. The "Fabulous Five" are shown, front row (l-r): Jeanne Cobbe, Shela Moffett. Back row: Karen Van Wert, Julia Callarman, Allison McDonald.



Jeanne Cobb

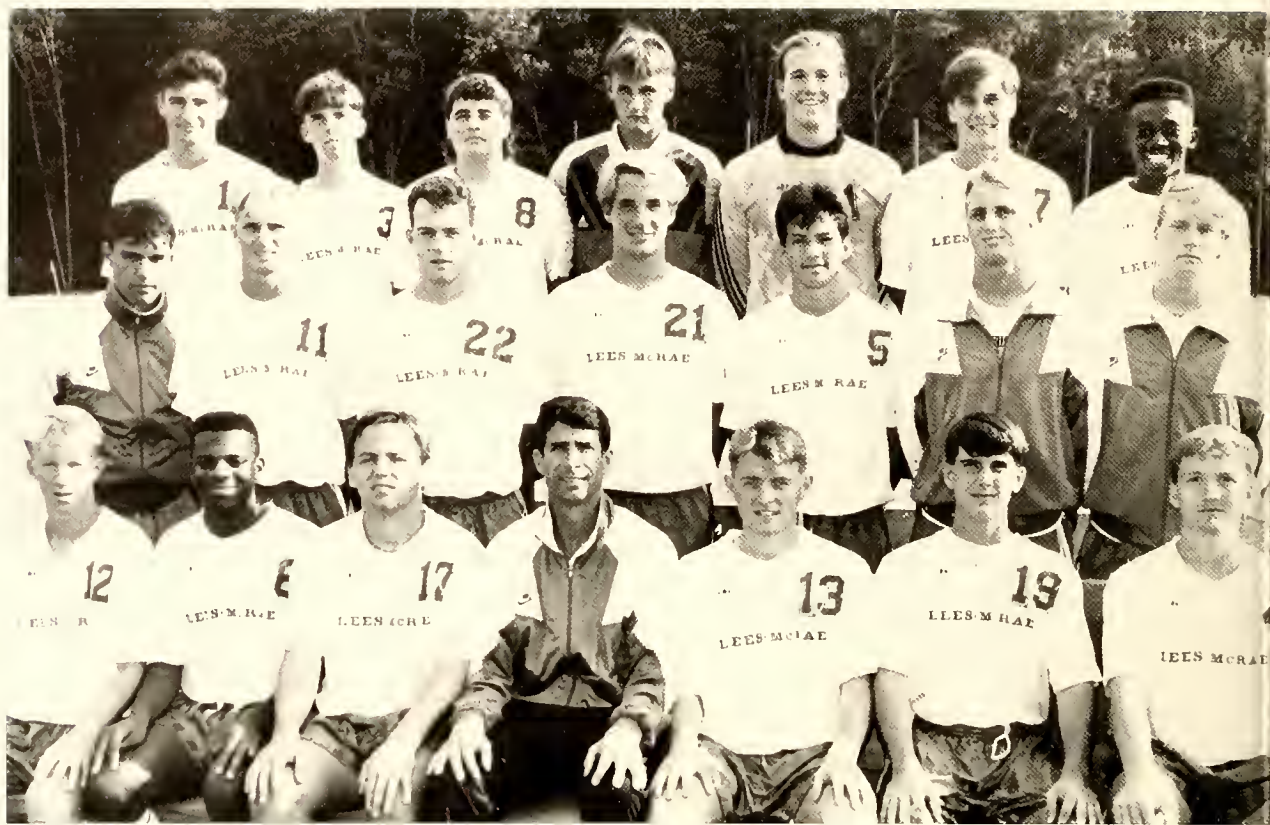
Julia Callarman



Allison McDonald

Leigh Smith





Front row (l-r): Curtis Fisher, John Williams, Kevin Adams, Coach Fred LaRoche, David Guy, Carter Todd, Eric Franklin. Second row: Joaquin DeOliveira, Ken Umphreys, Scott Hansen, Cary Cooper, Argemiro Roa, Will Umphreys, Jason Bradley. Back row: Chris Garmon, Matthew Upchurch, David Bashara, John Clark, Paul Lucas, Troy Allen, Shindano Kakudji.

Men's Soccer

1992 Schedule

Lees-McRae	1	Bluefield College	0
	0	Catawba College	5
	2	Coker College	2
	2	King College	3
	0	Belmont Abbey College	3
	2	High Point College	4
	2	Mars Hill College	1
	0	University of Charleston	2
	0	Lenoir-Rhyne College	3
	1	Erskine College	2
	1	Tusculum College	6
	0	Georgia Southern	3
	0	Berry College	1
	0	St. Thomas University	5
	0	Nova University	3
	1	Palm Beach Atlantic	1
	4	St. Andrews College	2



David Bashara; background, Chris Garmon.



Coach Fred LaRoche



Shindano Kakudji

David Guy



Shindano Kakudji as Ken Umphreys (11) looks on.
Kevin Adams



Kim Manis



Volleyball



1992 Schedule

Lees-McRae	
15-5	Queens College 15-0, 15-13, 15-8
15-10, 17-15	Clinch Valley College
15-8, 15-13	Union College 15-6
15-4, 15-13, 15-12	Carson-Newman 15-13, 15-9
15-11, 16-14, 16-14	Gardner-Webb College 15-11
15-1	Concord College 15-11, 18-16
15-10, 15-9	Emory & Henry 15-10
15-6, 15-4	Bluefield College
15-7, 15-10	Glennville State 15-13
15-5, 15-6, 15-6	Lenoir-Rhyne College 15-8
15-10, 15-10, 17-15	Lincoln Memorial 15-4, 15-11
	Elon College 15-11, 15-9, 15-6
	Anderson College 15-11, 15-5, 15-5
15-12, 15-7, 15-9	Limestone College 15-8
16-14, 15-12, 15-11	Carson-Newman
	Queens College 15-1, 15-11, 15-2
15-0, 15-0 (default)	Tusculum College 15-4, 15-4, 16-14
16-14	Clinch Valley College
	Coker College 15-6, 15-4, 15-3
	St. Andrews College 16-14, 15-7, 15-1
15-7, 15-4, 15-11	Gardner-Webb College 15-8
15-7, 15-12, 15-2	Belmont Abbey
15-2, 16-14, 15-7	Lincoln Memorial
15-9, 15-12, 15-7	Clinch Valley College
15-11	Catawba College 15-1, 15-8, 15-8
15-1, 15-6, 15-12	Tusculum College
15-10, 15-3, 15-12	Limestone College
15-11, 15-10	Lenoir-Rhyne College 15-6, 17-15, 15-1

Deana Magaw





Front row (l-r): Tracey Sizemore, Manager/Statistician Jennifer Turner, Kim Manis (with Ashley Magaw), Kristy Baumcom. Second row: Manager James Love, Deana Magaw, Wendy Jacobs, Christie Stringer, Sara Jones, Christie Simonds, Michele Taylor. Back row: Kristen Surber, Coach Fish Gupton, Kammiesan Reda, Student Assistant Coach Brad Mettee, Dreama Pullon.



Lady Bobcats Set Record. The women's basketball team put in a record-setting performance during the first half of the 1992-93 season, winning 12 of 13 games, and bettering the record the team set last year with a 10-3 slate. The team is pictured above after winning the Lady Bobcat Classic. Front row (l-r): Kelley Morris, Stephene McCoverly, Joey Morris, Libby Byrd. Back row: Carmelita Conner, Teresa Harris, Robin Scott, Angela Holley, Lori Eichler, Karla Byrd, Stephanie Dishier.

Stephene McCoverly drives for two.



Carmelita Conner hits a jumper.



Women's Basketball

1992-93

Lees-McRae	90	King College	68
	63	Shorter College	51
	63	Berry College	78
	86	Lenoir-Rhyne College	79
	86	Catawba College	72
	86	Mars Hill College	64
	99	Milligan College	93
	97	Elon College	83
	102	Clinch Valley College	88
	95	Catawba College	75
	76	Tusculum College	71
	96	Clinch Valley College	84
	88	Carson-Newman	83
	105	St. Andrews College	53
	110	Mount Olive College	91
	94	Belmont Abbey College	78
	68	Cumberland College	89
	91	Barton College	68
	67	Lincoln Memorial	84
	106	Tusculum College	64
	61	Carson-Newman	87
	121	Coker College	54
	92	Mars Hill College	80
	83	High Point College	78
	79	King College	69
	101	Newberry College	81
	98	Lincoln Memorial	73
	99	Limestone College	61
	104	Barton College	52
	2	Cumberland College	0 (forfeit)
	District 26 Tournament		
80	Catawba College		88



Lori Eichler, Stephanie Disher, and Teresa Harris played in their final regular season home basketball game on February 13, 1993 against Limestone in a 99-61 victory. The four seniors, with the program through the transition made from junior college status to competition at the four-year level, played a significant role in the team reversing its fortunes from 4-19 in 1990-91 to 22-7 in 1991-92.



Teresa Harris



Angela Holley



Stephanie Disher and Libby Byrd sandwich a Newberry player.



Seniors: Angie Holley, Lori Eichler, Stephanie Disher, Teresa Harris.



Women's Basketball player Teresa Harris of Winston-Salem was honored as the "All-Time Career Rebound Leader" in school history with 746 rebounds during her four-year career (1989-93). Harris, a 5'10" forward, added to her record in District 26 tournament action. Coach Dixon was named "Coach of the Year" in District 26 of the NAIA.



Sophomore Robin Scott of Marion, Virginia, was honored for setting a new "single season rebounding record" of 308, which eclipsed the old record held by All-American Sandra Williams in 1987 with 271 rebounds. Scott (shown with LMC Athletic Director Don Baker) accomplished this feat despite the fact she missed the last five games of the season due to a foot injury.



Sophomore Robin Scott hits two.



Libby Byrd

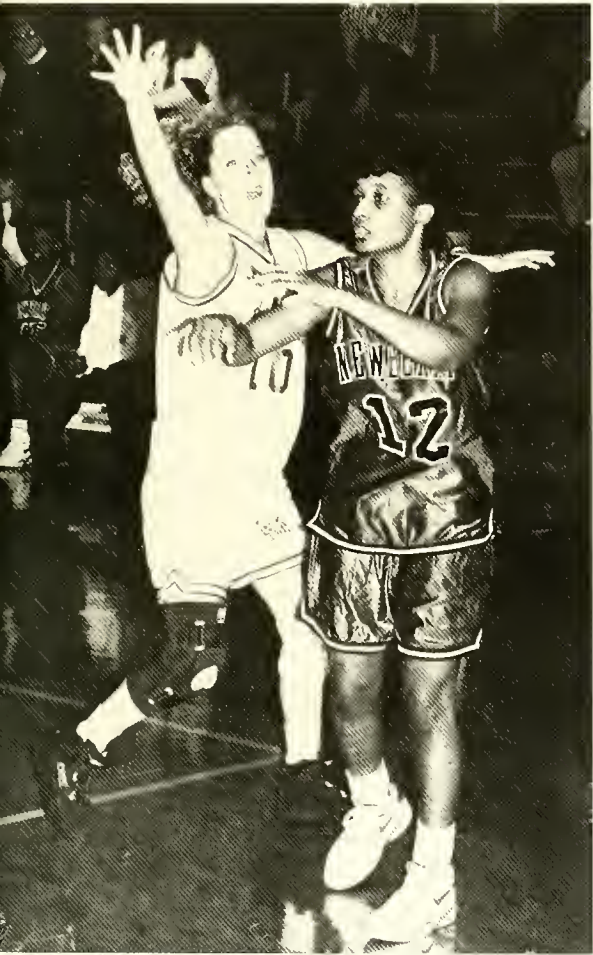
For the first time in the history of women's basketball at Lees-McRae College, a jersey was retired. Lori Eichler's number 34 jersey was retired at the Spring Sports Banquet. Eichler holds over twenty Lady Bobcat basketball records outright, including most points with 1,998 and was also named co-MVP along with teammate Teresa Harris. Eichler is pictured with head women's coach Janet Dixon.



Joey Morris



Kelley Morris



Men's Basketball

Lees-McRae	70	1992-93 Schedule	
	56	High Point College	75
	50	Elon College	81
	73	Presbyterian College	83
	62	Wingate College	92
	70	Mars Hill College	69
	64	Belmont Abbey College	65
	81	High Point College	72
	85	Georgia College	99
	85	Mount Olive College	91
	77	Barton College	92
	72	Charleston Southern	81
	85	Queens College	87
	87	Barton College	98
	51	Erskine College	72
	82	Belmont Abbey College	73
	76	Pfeiffer College	105
	89	Wingate College	103
	76	Catawba College	112
	70	Mount Olive College	88
	45	Carson-Newman	78
	53	Mars Hill College	64
	77	St. Andrews College	61
	72	Gardner-Webb College	84
	94	Pfeiffer College	81
	89	Catawba College	62
	54	Limestone College	78
	67	Coker College	52
	73	Elon College	81
	84	St. Andrews College	78
	64	Carson-Newman	101
	85	USC-Spartanburg	95
		Limestone College	93

Kelvin England

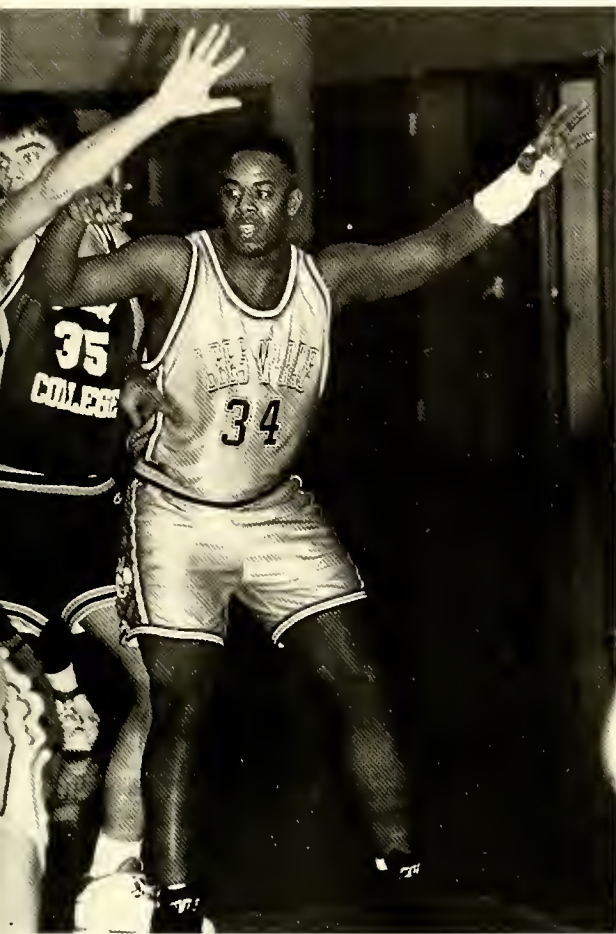


Andy Wilson



Front row (l-r): Vic Hall, Andy Wilson, Craig Watson, Gerald Coon, Gary Mayes, Kelvin England. Back row: Graduate Assistant Rick Baker, Dane Barker, Ian Lockwood, Kelvin Wilson, Matt Treski, Alphonso Keaton, Brian Lytton, Coach Jack Lytton.

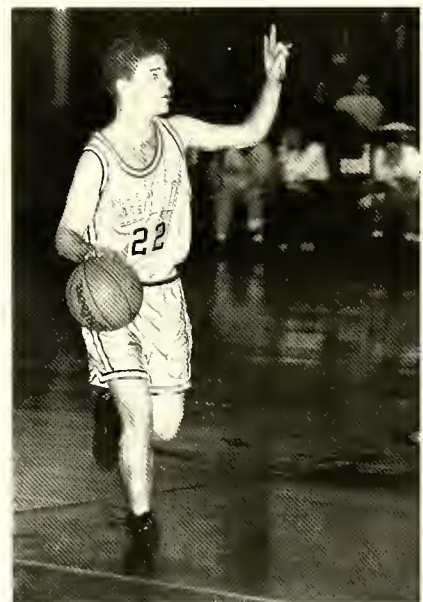
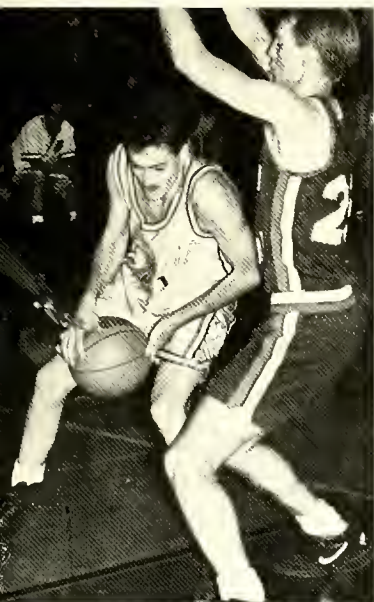


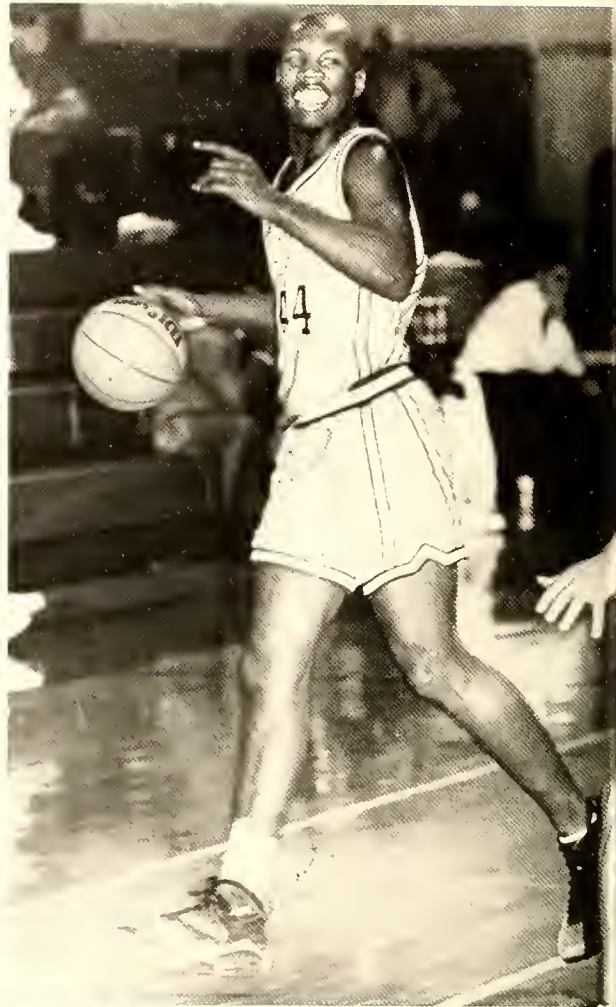
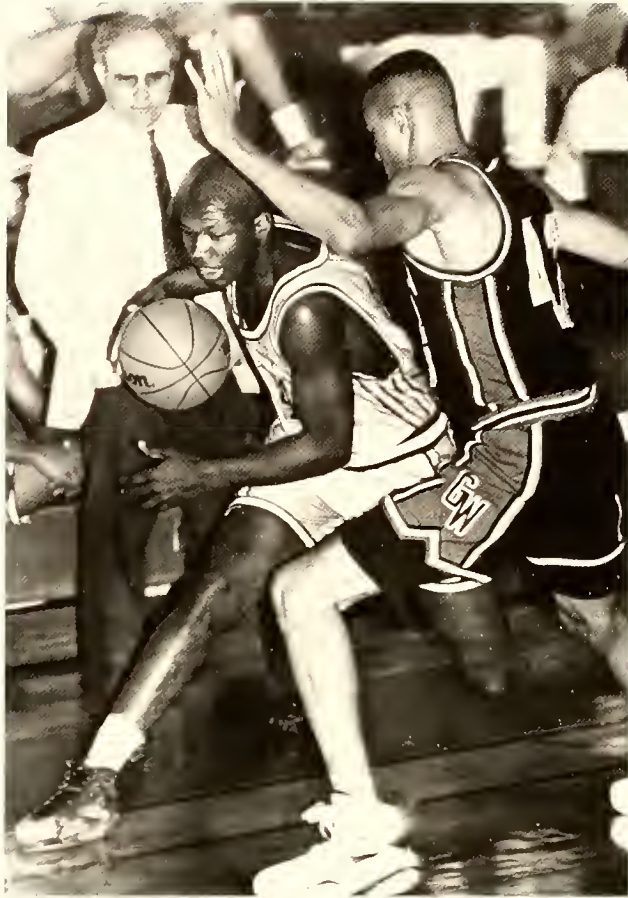


Senior center Kelvin Wilson passed two milestones during the 1992-93 season, becoming only the fourth Bobcat to top the 1,000-point plateau, and in doing so became the all-time leading scorer with 1,092 points, passing Dick Kellar ('53), who amassed 1,062 points from 1951 to 1953. Wilson (center) received a special commemorative basketball from LMC head men's basketball coach Jack Lytton (left), along with assistant men's basketball coach Rick Baker (right).

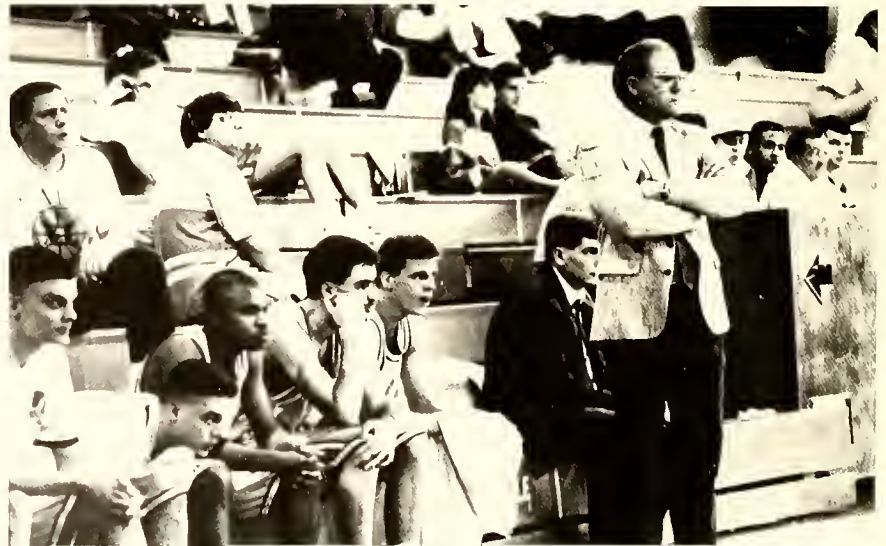


Senior Brian Lytton led the team in 3-point shooting.
Craig Watson





Freshman Alphonso Keaton was the young leader of the Bobcats during the 1992-93 campaign.



Head coach Jack Lytton directed the battling Bobcats down to the wire in each game.



Sophomore Andy Wilson was the "floor general" for the young Bobcat squad.

Junior Vic Hall

Freshman Matt Treski gave rebounding strength.



Freshman Ian Lockwood added scoring power.

Skiing

1993 Ski Team Schedule/Results

Ski Hawksnest - Giont Stolom. Men's Team: 1. LMC 119.51; 2. ASU 121.22; 3. UNC-Chapel Hill (132.05); 4. Duke (165.84); 5. N.C. State (177.53).

Appolochion Ski Mountoin - Stolom. Men's Team: 1. Duke (9184.21); 2. Lees-McRae (184.73); 3. N.C. State (196.37); 4. ASU (217.00).

Ski Beech - Giont Stolom. Men's Team: 1. Duke (221.47); 2. ASU (226.89); 3. Lees-McRae (230.99); 4. N.C. State (243.21); 5. UNC-Chapel Hill (245.01). **Women's Team:** 1. ASU (218.66); 2. Duke (266.40); 3. Lees-McRae (335.17).

Ski Beech - Giont Stolom. Men's Team: 1. Duke (225.24); 2. Lees-McRae (229.27); 3. ASU (229.75); 4. UNC-Chapel Hill (286.28). **Women's Team:** 1. ASU (231.68); 2. Duke (251.03); 3. Lees-McRae (328.87).

Ski Hawksnest - Giont Stolom. Men's Team: 1. Duke (176.02); 2. ASU (292.19); 3. Lees-McRae (201.37).

Appolochion Ski Mountoin. Men's Team: 1. ASU (187.53); 2. Duke (190.47); 3. Lees-McRae (198.59).

Finished fifth overall at conference championships at Timberline (WV). Mark Reece qualified for regional championships as the top individual not on a team already going to the regionals.

Alex Dewey



Front row (l-r): Todd Crawford, Chad Smyre, Jason Reynolds, Melonye Trivett, Bryon Buesser. Back row: John Parks, Mark Reece, W. H. Gagnon, Alex Dewey.



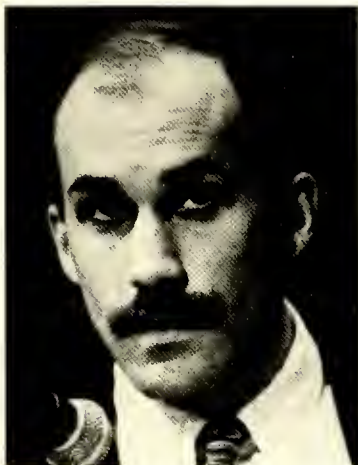


Senior Rob Gagnon finished in Top 10 of all four races.



Chad Smyre

Melonne Trivett



Ski Coach
Scott Ballard



Bonnie Biggers



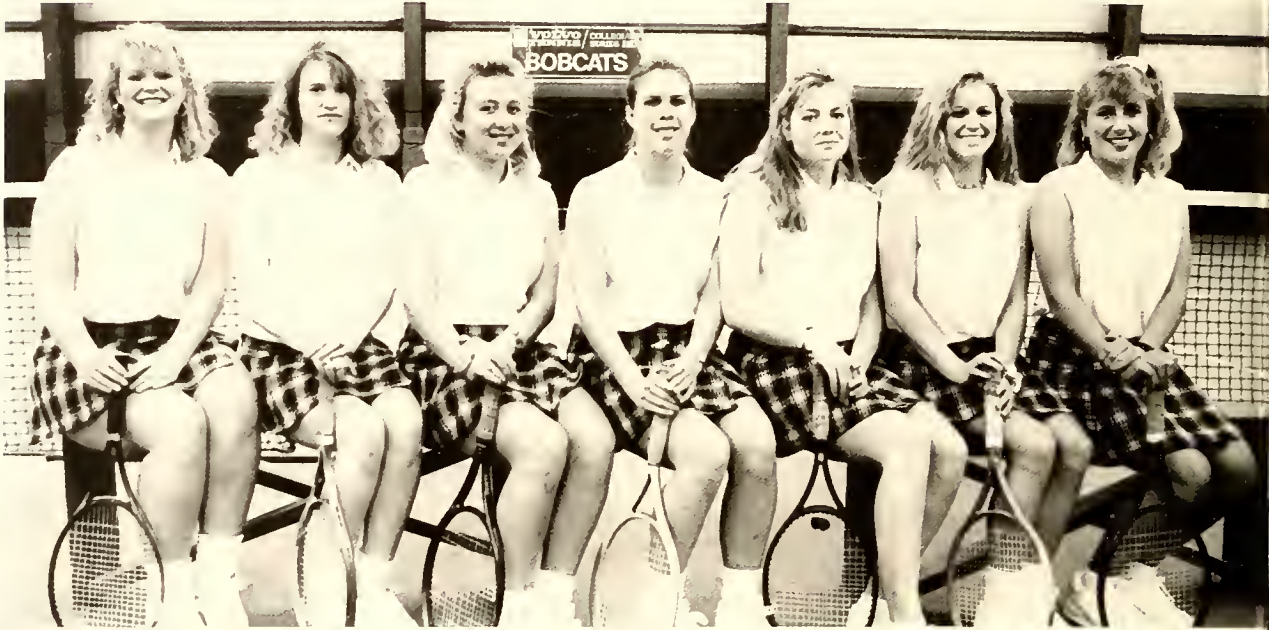
Bryon Buesser



Mark Reece

Pictured below (l-r): Mandy Poplin, Angelique White, Sasha Zyrianova, Desiree Diaz, Kammi McLaurin, Kristen Surber, Kristy Kind.

Men's and Women's Tennis

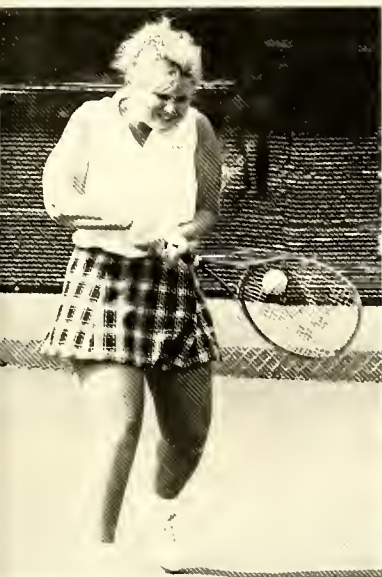


Kristen Surber

Kammi McLaurin

Sasha Zyrianova





Mandy Poplin



Desiree Diaz



Coach Fish Guppton

Front row (l-r): Chris Bartlett, Luke Gravitte, Noel Gressner, Steve Phouangphrachanh, Matt Connors, Felix Yamasato. Back row: David Brown, Jason Pinholster, Chad Quesenberry, Charlie Ziegler.



1993 Women's Schedule

Lees-McRae	8	Newberry College	1
	9	Bluefield College	0
	8	Newberry College	1
	7	Coker College	2
	9	Lenoir-Rhyne College	0
	6	Lincoln Memorial	3
	6	Columbia College	3

District 26 Playoffs: Barton (23 points), Elon (17), Wingate (14), Presbyterian (13), Pfeiffer (10), High Point (6), Catawba (5), St. Andrews (3), Lees-McRae (2), Belmont Abbey (1).

1993 Men's Schedule

Lees-McRae	6	Newberry College	3
	6	Coker College	3
	5	Lenoir-Rhyne College	1
	6	Virginia Intermont	3
	0	E.T.S.U.	9
	7	St. Andrews College	2
	5	Pfeiffer College	4
	3	Lincoln Memorial	6

District 26 Playoffs: Elon (31 points), Presbyterian (23), Barton (14), Wingate (12), Belmont Abbey (8), Mars Hill (7), St. Andrews (7), Coker (6), Catawba (4), High Point (4), Pfeiffer (4), Lees-McRae (3).



Jason Pinholster



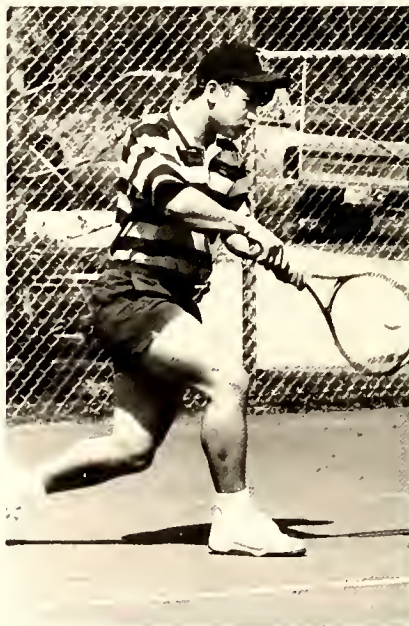
Luke Gravitte



Felix Yamasato



Charlie Ziegler



Steve Phouangphrachanh



Chad Quesenberry

Golf

1993 Golf Schedule

River Falls Invitational (hosted by Spartanburg Methodist): Lees-McRae finished 15th out of fifteen schools.

Lacey Gane Invitational (hosted by Pembroke State University): Lees-McRae finished 11th out of thirteen schools.

"Pop" Martin Invitational (hosted by Belmont Abbey): Lees-McRae finished 14th out of nineteen schools.

District 26 Golf Championships: LMC finished 14th out of fifteen schools. 1. Pfeiffer (915); 2. Gardner-Webb (922); 3. Belmont Abbey (925); 4. Catawba (928); 5. Elon (930); 6. Carson-Newman (943); 7. Coker (946); 8. Lenoir-Rhyne (959); 9. Barton (965); 10. Wingate (970); 11. Presbyterian (975); 12. Mt. Olive (981); 13. High Point (984); 14. Lees-McRae (991); 15. St. Andrews (996).

1993 Golf Team (l-r): Head Coach Jack Lytton, Lendal Norris, Carey Byrd, Chris Byrd, Clint Carraway, Tommy Thomas, Derek Schatz.



Intramurals

Lees-McRae's intramural activities are designed as an exciting supplement to one's academic responsibilities. Emphasis is placed upon participation and sportsmanship rather than competition. Among the benefits of participating in Lees-McRae's intramurals are friendship, physical exercise, and leadership opportunities.

Fall '92

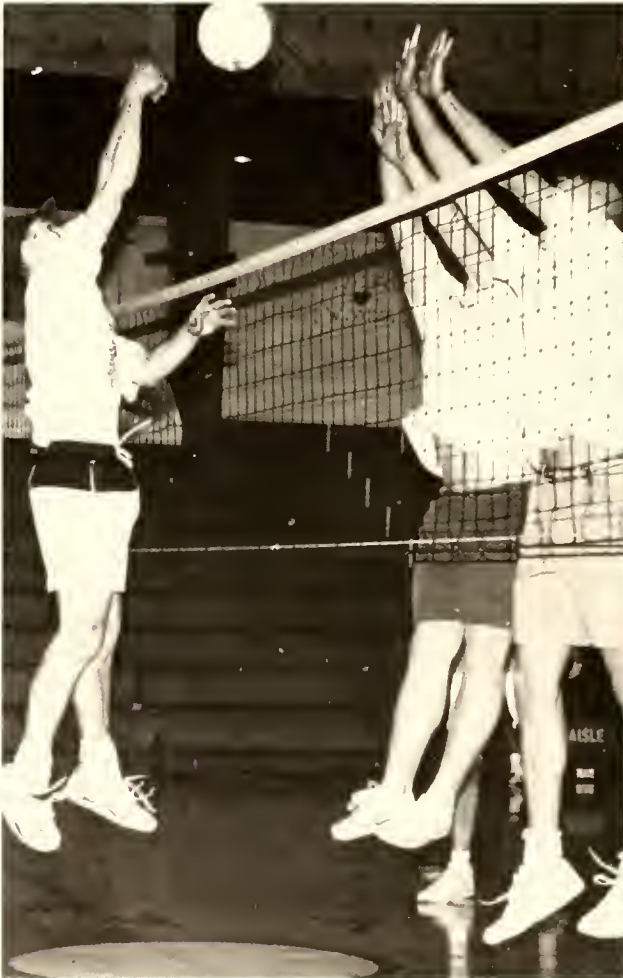
Frisbee Golf
2-Man Volleyball Tournament
Softball
Chess/Backgammon Tournament
Golf
Harvest Road Race
5 x 5 Basketball
Spades Tournament
Ping-Pong Tournament
Bowling

Spring '93

Billiards
3 x 3 Basketball Tournament
Volleyball
Spades Tournament
Table Tennis
Coed Soccer
Backgammon, Chess
Frisbee Golf
Putt-Putt
Bowling
Bench Press Competition



Volleyball Champs. Byron Bell, Bryon Buesser, Chad Quesenberry, Tom Simpson, Erick McMurray.



Intramural Basketball Champs (l-r): Colby Goodson, Stoney Norris, Lee Ward, Robbie Jobe, Sam Rowland, Brent Welch.

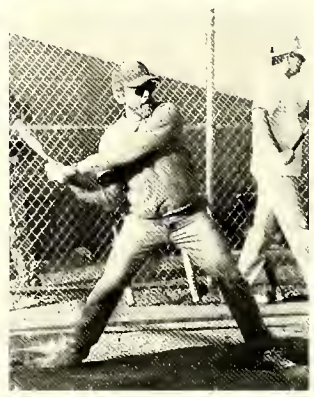




Coaches/Staff Winners of Softball Season.
 Front row (l-r): Phil Royall, Gary Juhan, Lynn
 Carter, Allen Speer, Jim Martz. Back row: Phil
 Sturgeon, Jim Stonesifer, Todd Gambill,
 Tim Canterbury, Dwaine Greene, Jim Taylor.



Dwaine Greene and Jim Stonesifer plot strategy.
 Todd Gambill



Jim Martz



Accolades

Carolyn Travis, MC, Honors & Awards



Lori Eichler, Basketball
NAIA All-American Honorable Mention
All-District 26
District 26 All-Tournament Team
Lees-McRae Co-MVP



Tom Nelson, Football
NAIA All-American Second Team
NAIA All-American Scholar-Athlete

**STUDENT-ATHLETES
GARNER
CONFERENCE, DISTRICT
ALL-AMERICAN
RECOGNITION**

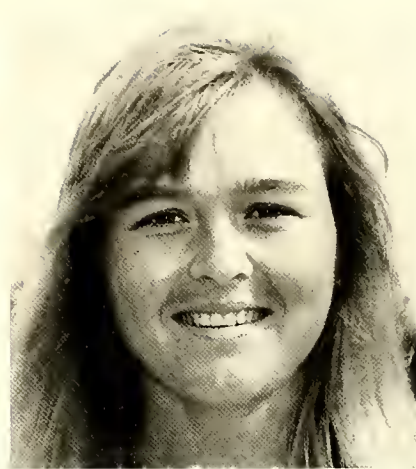
Ontario LEESMCRÆ



Allison McDonald, Soccer
 All-District 26 First Team
 All-Carolinas Conference First Team
 Conference "Player of the Year"
 NSCAA/NAIA All-South
 Lees-McRae MVP



Karen Van Wert, Soccer
 All-District 26
 Carolinas Conference Honorable Mention
 NSCAA/NAIA All-South



Kama Roberts, Soccer
 All-Carolina Conference First Team
 NSCAA/NAIA All-South



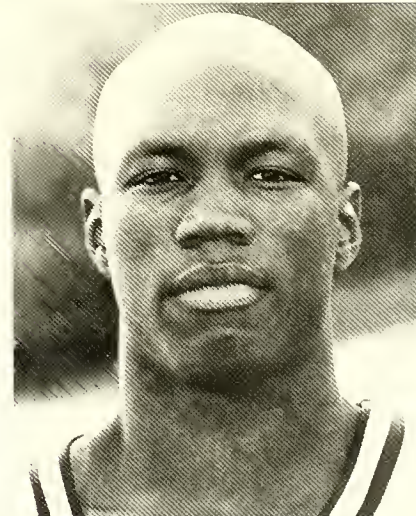
Maris Ethridge, Soccer
 All-Carolinas Conference Honorable Mention
 NSCAA/NAIA All-South

(above, left) **Alana Hill, Soccer**
 All-Carolinas Conference First Team

(above, right) **Julia Callarman,**
 Soccer
 All-Carolinas Conference First Team



(left) **Ronnie Getz, Football**
 NAIA All-American Honorable
 Mention



(right) **Alphonso Keaton, Basketball**
 All-District 26 Team
 Lees-McRae MVP

Who's Who

Lees-McRae had fourteen candidates selected for inclusion in the national publication, WHO'S WHO AMONG STUDENTS IN AMERICAN COLLEGES AND UNIVERSITIES. The publication recognizes students for their outstanding contribution to their campus, the students' scholarship, leadership, participation in educational and extracurricular activities, general citizenship and promise of future usefulness. It is a means of compensation for outstanding efforts and achievement; a standard of management for students comparable to other recognized scholastic and service organizations.



Chris Arnold



Tony Aruffo



Julia Callarman



Betsy Hall



Teresa Harris



John Hinnant

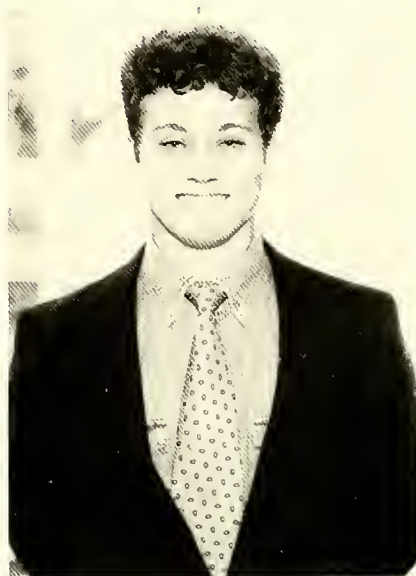
Among Students In American Colleges and Universities



Kim DeTamble



Waynette Gentle



Noel Gressner



Angie Holley



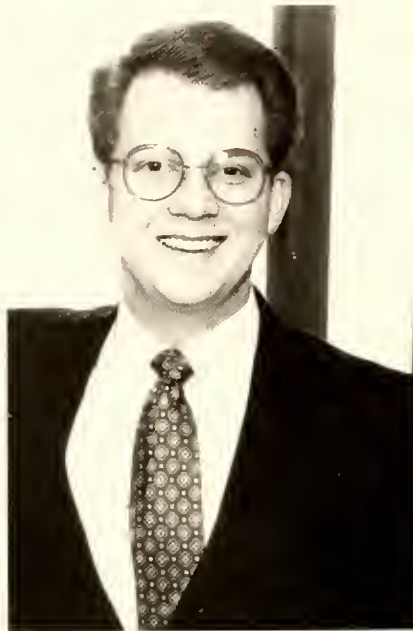
Allison McDonald



Sam Mumpower

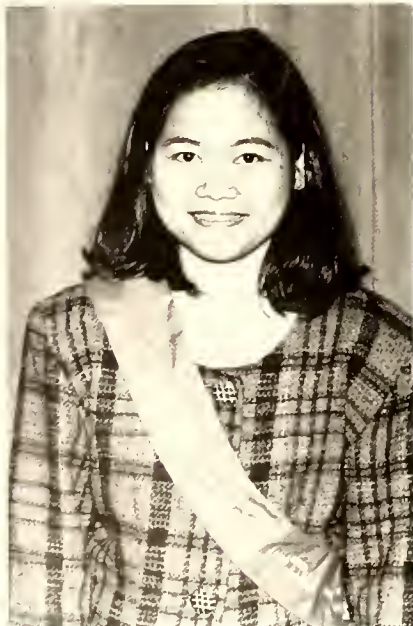
Thirty-Fourth Annual

Who's Who



Rusty Smith

Teng Vengchiem



The Order of the Tower assisted the administration of Lees-McRae in the presentation of the Thirty-Fourth Annual Honors & Awards Program. Ms. Betsy Hall, Tower President, and Mr. Rusty Smith, Vice President, presided. Ms. Carolyn Travis, Associate Professor of English, was the Master of Ceremonies. Ms. Joan Williams, Assistant Professor for Academic Advancement, delivered the invocation.

The program was dedicated to retiring President Dr. Bradford I. Crain.

Athletic Awards: Women's Basketball MVP, Lori Eichler and Teresa Harris; Men's Basketball MVP, Alphonso Keaton, Jr.; Men's Basketball Coach's Award, Kevin Wilson; Golf MVP, Clint Carraway; Golf Coach's Award, Carey Byrd; Skiing MVP, Rob Gagnon; Skiing Coach's Award, Mark Reece; Football Coaches' Award, Tom Nelson (Offense) and Ronnie Getz (Defense); Men's Soccer MVP, John Clark, Men's Soccer Coach's Award, Curtis Fisher; Women's Soccer MVP, Allison McDonald; Women's Soccer Coach's Award, Shela Moffett; Volleyball MVP, Drea Pullon; Volleyball Coach's Award, Christie Stringer; Men's Tennis MVP, Noel Gressner; Men's Tennis Coach's Award, Felix Yamasato; Women's Tennis MVP, Mandy Poplin; Women's Tennis Coach's Award, Kristen Surber; Outstanding Athlete Awards, Noel Gressner and Lori Eichler; George Homan Award, Noel Gressner; Alesia Ann Albritton Award, Mandy Poplin; Fred I. Dickerson Academic-Athletic Awards, Julia Callaman and Tom Nelson.

Performing Arts Awards: Clogging, Raymond Jones; Technical Theatre, Dale Friese; Theatre Performance, Tessa Willoughby; Music, Ron Brown; Dance, Brad Watson; Overall Performing Arts Award, Mike Hannah.

Academic Excellence: Art, Chris Carr, Spanish, Paul Stephenson; English, Julie Oliver; Communications, John Clark; Neron Wilson Math Award, Lamont Calhoun; Senior Math Award, Melissa Tedder; Business, Darlene Gibbs; J. B. Pritchett Memorial Award for Science, Sam Mumpower; Criminal Justice Achievement, Steve Tollie; Criminal Justice Senior Award, John Skipper; Social Science, Tina Shook; History,

Tessa Willoughby; Religious Studies, Allison McDonald.

Scholarships: E. L. Lafferty Science, Li Liu; Glen Johnson, Sherry McCloud; Student Ambassadors, Michael Hacker; Gary Juhan, Dena Moyer; O'dell Smith Resident Life, Dena Moyer; Pat Smith Scholarship for Academic Advancement, David Buckley; Alumni Council, Jason Jones; Tim Weatherman, Melonye Trivett; Lewis Hall, Waynette Gentle; Delta Kappa Gamma Society, Tammy Clark; Margaret Tufts Neal, Michelle Johnson; Board of Trustees Leadership, Parker Grubbs and Waynette Gentle; Beta Tau, Tonya Stephens, Misty Wilcox, and Gayle Farina.

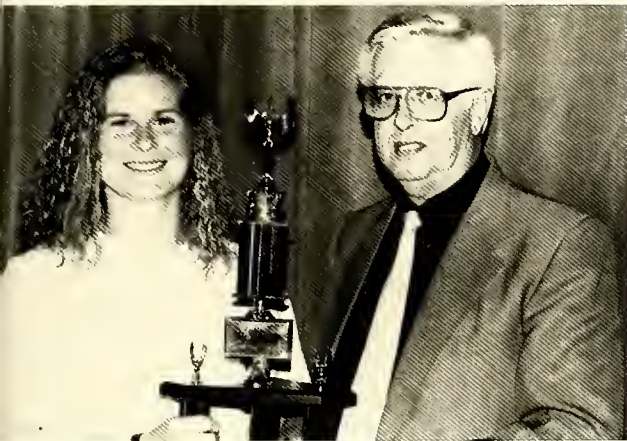
Col. & Mrs. Paul M. Callahan Memorial Scholarships: Calvin Lindsey Award for Excellence in Leadership, William Bake; Jack "Pap" Martin Award for Excellence in Athletics, Dena Moyer; John A. McConnell Award for All-Around Excellence, Andrew Nevil; Ralph "Tony" Soverel Award for Excellence in Performing Arts, Joey Griffin, Preston Peter Wolfe Award for Excellence in Academics, Misty Wilcox; Johnny Mackorell Smallest Football Walk-On Award, Tim Henson.

Special Recognition: Resident Assistants of the Year, Dena Moyer, Parker Grubbs; Order of the Tower, Scott Ballard; Teacher Education, Avery County Middle School and Brian Lytton; Phi Theta Kappa Outstanding Educator, Roberta Cauvel; Edgar Tufts Faculty Award, Sam Burton; Student Government, David Sokol; SGA Outstanding Officer, Kim Mattox; First Lady's Award for Excellence in Teacher Education, Jeff Hopkins.

Sullivan Awards (national awards given to individuals who, by their general conduct and relations with others, indicate that they possess to a marked degree a spirit of helpfulness and an awareness of the beauty and value of the intangible elements of life) were presented by Dr. Crain to Lamont Calhoun, Tengone Vengchiem, David Yount, and Sharon Coutant, President Crain was presented a Sullivan Award by Lees-McRae Trustee Roma Melton.

The H. C. Evans, Jr. Fidelity Award, given to the student considered the best all-around, was presented by Dr. Crain to Tengone Vengchiem.

Honors and Awards



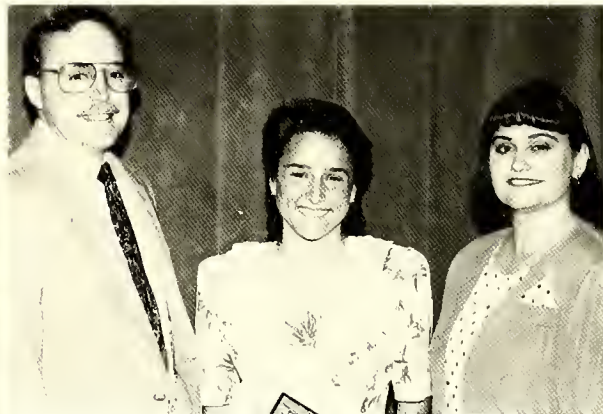
The Fred I. Dickerson Academic-Athletic Award was presented to Julia Allarman and Tom Nelson (not pictured) by Don Baker.



Lamont Calhoun received the Neron Wilson Math Award, presented to him by Ms. Nevada Wilson of Charlotte, sister of the late Neron Wilson.



Li Liu was given the E. L. Lafferty Science Scholarship by Will Lafferty.



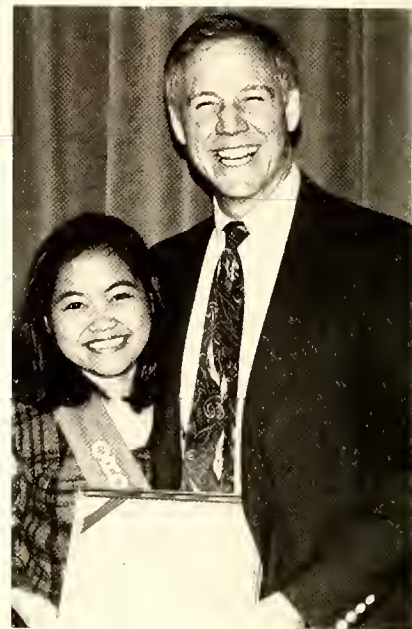
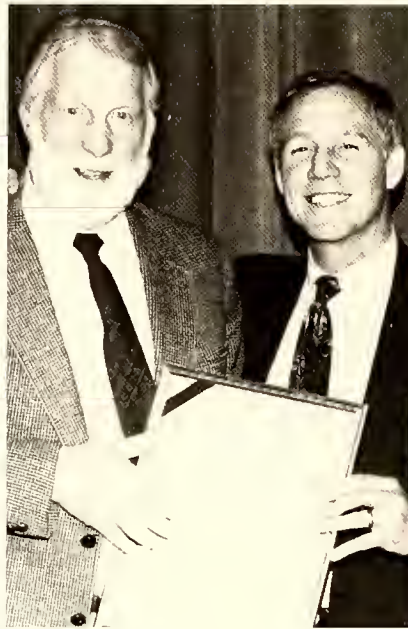
Dena Moyer was presented the first annual Gary Juhan Residence Life Scholarship, presented to her by Kacy Crabtree, Resident Director, honoring Gary Juhan (left), Vice President for Student Services and Campus Facilities.



Noel Gressner and Lori Eichler were named the year's Outstanding Athletes. Eichler was named honorable mention All-American (NAIA), because Lees-McRae's all-time leading scorer, and had her jersey retired.



Athletic Director Don Baker recognized Mandy Poplin as recipient of the Alesia Ann Albritton Tennis Award and Noel Gressner as winner of the George Homan Tennis Award.



MOST VALUABLE PLAYER/COACHES' AWARDS: The MVP Award is voted on by the team members and approved by the head coach while the Coaches' Award is given by the coach to a valuable team member who is not recognized by all-conference or all-region honors.

OUTSTANDING ATHLETE AWARDS: These awards are presented to a male and a female student-athlete in the Senior Class. The students must have participated in one or more varsity sports and, through personal achievement, have brought prestige to the college through conference, regional, and national recognition.

GEORGE HOMAN AWARD: This award is given to the tennis player that best demonstrates the courage, desire, and esprit de corps that typified George Homan's character, and to the player who shows the greatest improvement at Lees-McRae.

FRED I. DICKERSON AWARDS: These awards are given to the male and female student-athletes in the Senior Class who possess the highest scholastic standing. Criteria for the awards also include attitude, dedication, discipline, and demonstration of the Lees-McRae spirit.

ALESIA ANN ALBRITTON MEMORIAL SCHOLARSHIP: Established by friends and the students of Lees-McRae College in memory of their close friend, captain, and number one singles player, Alesia Ann Albritton. Presented annually to a member of the Lady Bobcat Tennis Team. Recipient represents the drive, talent, friendliness and gracious attitude demonstrated by Alesia.

CLOGGING AWARD: This award is presented to the student who is talented in and dedicated to the Lees-McRae Clogging Team. The selection is made by the Performing Arts faculty and staff.

TECHNICAL THEATRE AWARD. This award is presented to the student who has exhibited talent and dedication in the area of technical theatre arts at Lees-McRae. The selection is made by the Performing Arts faculty and staff.

THEATRE PERFORMANCE AWARD: This award is presented to the student who has exhibited talent in the area of theatre performance at Lees-McRae. The selection is made by the Performing Arts faculty and staff.

MUSIC AWARD: This award is presented to the student who is talented and dedicated to the music program at Lees-McRae. The selection is made by the Performing Arts faculty and staff.

DANCE AWARD: The award is presented to the student who has demonstrated a strong dedication and commitment to technique development and dance performance. The selection is made by the Performing Arts faculty and staff.

OVERALL PERFORMING ARTS AWARD: This award is given to the Performing Arts student who has exhibited talent, dedication, and academic achievement in the Performing Arts program at Lees-McRae. The selection is made by the Performing Arts faculty and staff.

ART AWARD: This award is presented to the art student having completed two or more art courses at Lees-McRae who has shown outstanding achievement in art.

SPANISH AWARD: The Spanish Award is given to the student who has the highest grade point average after completing both the elementary and the intermediate levels of Spanish at Lees-McRae.

ENGLISH AWARD: Given each year by the English faculty to a student who has excelled in both composition and literature in at least four courses at Lees-McRae.

COMMUNICATIONS AWARD: This award is presented to a student who has demonstrated superior ability in communication as judged by the communications faculty.

NERON WILSON MATH AWARD: This award is given to an undergraduate based on superior achievement in at least two semesters of undergraduate mathematics. It is awarded on the basis of grades, effort, attitude, and depth of understanding.

SENIOR MATHEMATICS AWARD: This award is given to the senior mathematics student who demonstrates outstanding achievement in mathematics. Superior achievement in mathematics demonstrated in grades and depth of understanding is the basis of this award.

BUSINESS AWARD: This award is presented to the senior business major with the highest GPA in the major.



(at left) Sullivan awards were presented to Sharon Coutant, Career Counselor; David Yount, Associate Professor of History; students Teng-gone Vengchiem and Lamont Calhoun; and Roma Melton, Trustee.

B. PRITCHETT MEMORIAL AWARD FOR SCIENCE: This award is given to the student who best exemplified the attitudes and achievements of Mr. Pritchett, a teacher at Lees-McRae for 15 years. The recipient must have taken at least 15 hours of science, including at least one 200 level course, and maintained a 2.25 GPA.

E. L. LAFFERTY SCIENCE SCHOLARSHIP. This is an endowed scholarship in honor of former Lees-McRae Administrative Dean and Instructor E. L. Lafferty (1931-1969), awarded annually to a student majoring in science and having contributed time and service to the betterment of Lees-McRae College.

CRIMINAL JUSTICE ACHIEVEMENT AWARD: This award is presented to the Criminal Justice major (junior or senior) who has demonstrated the highest academic achievement in the major field during the year.

CRIMINAL JUSTICE SENIOR AWARD: This award is presented to the senior Criminal Justice major who has demonstrated the most growth in maturity, sense of purpose, and leadership ability during the course of his or her time at Lees-McRae.

SOCIAL SCIENCE AWARD: The Social Science Award is given to the student who has taken a minimum of 12 hours in the Social Science area. The criteria for this award includes the student's overall GPA and involvement in campus activities.

HISTORY AWARD: The History Award is given to a senior history major with an overall GPA or 3.25 of higher who demonstrates an enthusiasm for the discipline through academic excellence and leadership.

RELIGIOUS STUDIES AWARD: The Religious Studies Award is presented to the junior or senior who has demonstrated special interest and ability in religious studies and who is chosen by the faculty in this area.

GLEN JOHNSON COMMUTERS SCHOLARSHIP: This scholarship honors Glen Johnson, Professor Emeritus and founder of the Roadrunners, in recognition of his service to local students and to Lees-McRae College.

STUDENT AMBASSADORS SCHOLARSHIP: This award is earned by an outstanding Student Ambassador on the basis of service. In addition, the recipient must have a genuine love for

Lees-McRae College, its surroundings, campus life, faculty, and friends.

RESIDENT ASSISTANT OF THE YEAR AWARD: This honor is given to the student member of the Residence Life Staff who has performed all responsibilities in an exemplary manner. The nominations are made by Resident Directors and the selection is made by the Director of Residence Life and the Dean of Student Development.

O'DELL SMITH RESIDENCE LIFE SCHOLARSHIP: The O'dell Smith Residence Life Scholarship, established in the spring of 1990, is awarded annually to an individual who has excelled in the position of Resident Assistant during the previous year and plans to continue in that position for the coming year. The scholarship is provided by the family and friends of O'dell Smith in recognition of his many years of service to Lees-McRae College and particularly as Vice President/Dean of Student.

PAT SMITH SCHOLARSHIP: The Pat Smith Scholarship for Academic Advancements is a \$500 award recognizing the determination, diligence and persistence of a continuing student who has far surpassed his high school performance.

COLONEL AND MRS. PAUL M. CALLAHAN MEMORIAL SCHOLARSHIPS: These scholarships are awarded to rising sophomores, juniors, and seniors by Col. and Mrs. Paul Callahan. **LEADERSHIP AWARD:** Presented to an outstanding campus leader in honor of Calvin Lindsey. **ATHLETIC AWARD:** Presented to an outstanding athlete in honor of Jack "Pap" Martin. **ALL-AROUND EXCELLENCE AWARD:** Presented to a student who has made distinguished contributions in all facets of campus life. This award is made in memory of John A. McConnell. **PERFORMING ARTS AWARD:** Presented to a student who has made an outstanding contribution to the Performing Arts Department. This award is made in memory of Ralph "Tony" Soverel. **ACADEMIC AWARD:** Presented to a student with high academic qualities and a grade point average of 3.5 or higher. This award is made in memory of Preston P. Wolfe. **SMALLEST FOOTBALL WALK-ON AWARD:** Presented to the smallest football walk-on. This award is made in memory of Coach John Mackorell who coached at Lees-McRae from 1936-39.

ALUMNI COUNCIL SCHOLARSHIP: This scholarship is awarded to a rising sophomore, junior, or senior who possesses a minimum GPA of 2.25, exhibits the hallmarks of the Lees-McRae graduate, and is a contributing member of the college community.



Athletic Awards (l-r): Lori Eichler, Basketball MVP, Outstanding Athlete; Ron Getz, Defensive Football MVP; Allison McDonald, Soccer MVP; Teresa Harris, Basketball MVP; Kristen Surber, Tennis Coach's Award; Mark Reece, Skiing Coach's Award; Mandy Poplin Tennis MVP, Albritton Tennis Award; Alphonso Keaton, Basketball MVP; Noel Gressner, Tennis MVP, Outstanding Athlete, George Homan Tennis Award; Kelvin Wilson, Basketball Coach's Award; Curtis Fisher, Soccer Coach's Award; Carey Byrd, Golf Coach's Award; Felix Yamasato, Tennis Coach's Award; Clint Carraway, Golf MVP; John Clark, Soccer MVP; not pictured: Tom Nelson, Offensive Football MVP, Fred I. Dickerson Award; Rob Gagnon, Skiing MVP; Drea Pullon, Volleyball MVP; Christie Stringer, Volleyball Coach's Award.

TIM WEATHERMAN SCHOLARSHIP: This scholarship is awarded in the memory of Tim Weatherman and is presented to a rising sophomore. The criteria for this award will be a strong motivation to succeed in reaching individual goals, the determination to work for an education, a desire to achieve academically and athletically in tennis or skiing, and the ability to love life and live each day to its fullest — the traits that characterized Timothy Dale Weatherman.

WHO'S WHO AWARDS: Presented annually to the students selected to the national publication Who's Who Among Students in American Colleges and Universities. The publication recognizes students for their outstanding contribution to their campus, scholarship, leadership, participation in extracurricular activities, general citizenship, and promise of future usefulness.

OUTSTANDING STUDENT GOVERNMENT OFFICER AWARD: This award is presented to the Student Government officer who exhibits excellence in the role of student leader, in commitment to Lees-McRae College and its student body, and in dedication and service to the organization.

SGA SPECIAL RECOGNITION AWARD: This award is presented annually to the person(s) the student Government Association determines as being worthy of recognition for outstanding service to Lees-McRae College and the student body thereof.

ORDER OF THE TOWER SPECIAL RECOGNITION: This award is given to the person that the club acknowledges to have shown exceptional service to the college in ways that may sometimes go unrecognized.

LEWIS HALL SCHOLARSHIP: This scholarship is given to a student who is a rising sophomore, junior, or senior. The student must have maintained a 3.0 GPA and exemplify the Hallmarks of the Lees-McRae student.

THE TEACHER EDUCATION ASSOCIATION SPECIAL RECOGNITION AWARD: This award is given each year to a community, person, or agency that has contributed significantly to the growth and development of the Teacher Education Program and to the student members of the association.



Mrs. Alice Crain presented the First Lady's Award for Excellence in Teacher Education to Jeff Hopkins.



Scholarship Recipients (l-r): Melonye Trivett, Tim Weatherman Scholarship; Michelle Johnson, Margaret Tufts Neal Scholarship; Jason Jones, Alumni Council Scholarship; Waynette Gentle, Lewis Hall Scholarship; David Buckley, Pat Smith Scholarship for Academic Advancement; Sherry McCloud, Glen Johnson Scholarship; William Bake, Calvin Lindsey Memorial Leadership Scholarship; Tonya Stevens, Beta Tau Scholarship; Michael Hacker, Student Ambassadors Scholarship; Tammy Clark, Delta Kappa Gamma Society Scholarship; Misty Wilcox, Beta Tau Scholarship; Joey Griffin, Ralph Soverel Memorial Performing Arts Scholarship; Dena Moyer, O'dell Smith and Gary Juhan Scholarships; Andrew Nevil, John McConnell Memorial Scholarship for All-Around Excellence; Gayle Farina, Beta Tau Scholarship.



The Teacher Education Association recognized senior Brian Lytton. The award was presented by Associate Professor of Education Ita Kilbride.

DELTA KAPPA GAMMA SOCIETY SCHOLARSHIP: This scholarship is awarded to an Avery County student in the teacher education program. The recipient must embody the high ideals and standards of the Delta Kappa Gamma Society International, an honorary society of professional women educators.

THE FIRST LADY'S AWARD FOR EXCELLENCE IN TEACHER EDUCATION: This award is presented annually to the senior education student who has demonstrated excellence through purposeful commitment to the teaching profession. The criteria are promise as a teacher as evidenced in the field experiences and student teaching; participation in professional teaching organizations; participation in community and school service; commitment to mentoring, cultural distinction and diversity as important aspects of learning in the educational environment; and dedication to a life of learning. The cash award is graciously funded by Mrs. Bradford Crain.

MARGARET TUFTS NEAL SCHOLARSHIP: The Margaret Tufts Neal Scholarship is given by Lees-McRae alumni in honor of "Miss Margaret" Tufts Neal, a long-time Lees-McRae instructor and daughter of the college's founder, Edgar Tufts. The scholarship is awarded to an upperclassman in good academic standing with a demonstrated financial need. Preference will be given to those students entering the teacher education program and to those students from southern Appalachia.

BOARD OF TRUSTEES LEADERSHIP SCHOLARSHIP: Established in 1988, the Trustee Leadership Scholarship is awarded annually to students who are rising juniors or seniors. The recipients must have demonstrated excellence by their membership in leadership organizations on campus, extracurricular involvement and leadership skill. The scholarship is funded by the generosity of the Board of Trustees.

PHI THETA KAPPA OUTSTANDING EDUCATOR AWARD: This award is given by the Beta Tau Chapter and Epsilon Alumni Chapter of Phi Theta Kappa to a faculty member who best represents academic excellence and dedication to his or her discipline as it relates to the purpose of Lees-McRae College.

BETA TAU SCHOLARSHIP: This scholarship is presented by the Beta Tau Chapter of Phi Theta Kappa to members who plan to continue their education at Lees-McRae. It is funded by the chapter with support from the alumni of Beta Tau.



Academic Awards (l-r): Sam Mumpower, J. B. Pritchett, Memorial Award for Science; Allison McDonald, Religious Studies; John Skipper, Criminal Justice Senior Award; Melissa Tedder, Senior Math Award; Paul Stephenson, Spanish; Julie Oliver, English; Steve Tollie, Criminal Justice Achievement; Tessa Willoughby, History; Chris Carr, Art; Tina Shook, Social Science, John Clark, Communications, Darlene Gibbs, Business.



(at left) Performing Arts Awards (l-r): Dale Frieze, Technical Theatre; Tessa Willoughby, Theatre Performance; Brad Watson, Dance; Mike Hannah, Overall Performing Arts; Ron Brown, Music; not pictured: Raymond Jones, Clogging.



(at left) Special Awards (l-r): Dr. David Sokol, Director of Finance & Business Affairs, Student Government Association Recognition; Kim Mattox, SGA Outstanding Officer; Dena Moyer and Parker Grubbs, Resident Assistants of the Year; Scott Ballard, Director of Public Relations, Order of the Tower Special Recognition.



Academic Dean Jim Stonesifer awarded Sam Burton the Edgar Tufts Award.

EDGAR TUFTS FACULTY AWARD: This award is presented in memory of Edgar Tufts. It is presented to a faculty member for outstanding professional performance or contributions to the welfare of the college or community.

MULLIVAN AWARDS: These awards are presented to individuals who, by their general conduct and relations with others, indicate that they possess to a marked degree a spirit of helpfulness and an awareness of the beauty and value of the intangible elements of life. The recipients are selected by a staff committee in conjunction with the administration.

C. EVANS, JR. FIDELITY AWARD: This award is given to an overclassman who is considered the most dedicated to the college and the best all-around student. This award recognizes the student who best represents the exceptional idealism and generosity displayed by the late Dr. H. C. Evans, Jr., President of West-McRae College, 1967-84. The recipient is selected by the student body.



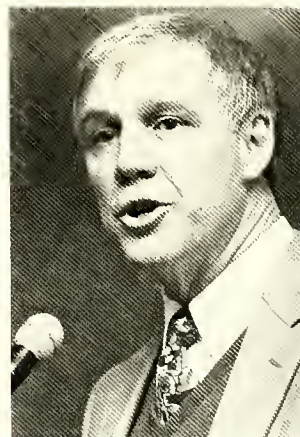
Faces of Travis — LMC Associate Professor of English Carolyn Travis assumed many different guises during her stint as Emcee of the Honors & Awards Program. She is pictured in both academic regalia and as an "official" of the college.



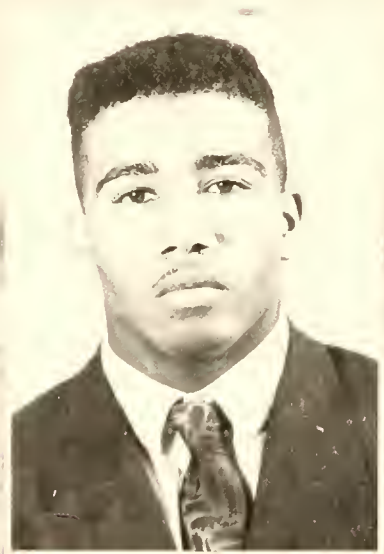
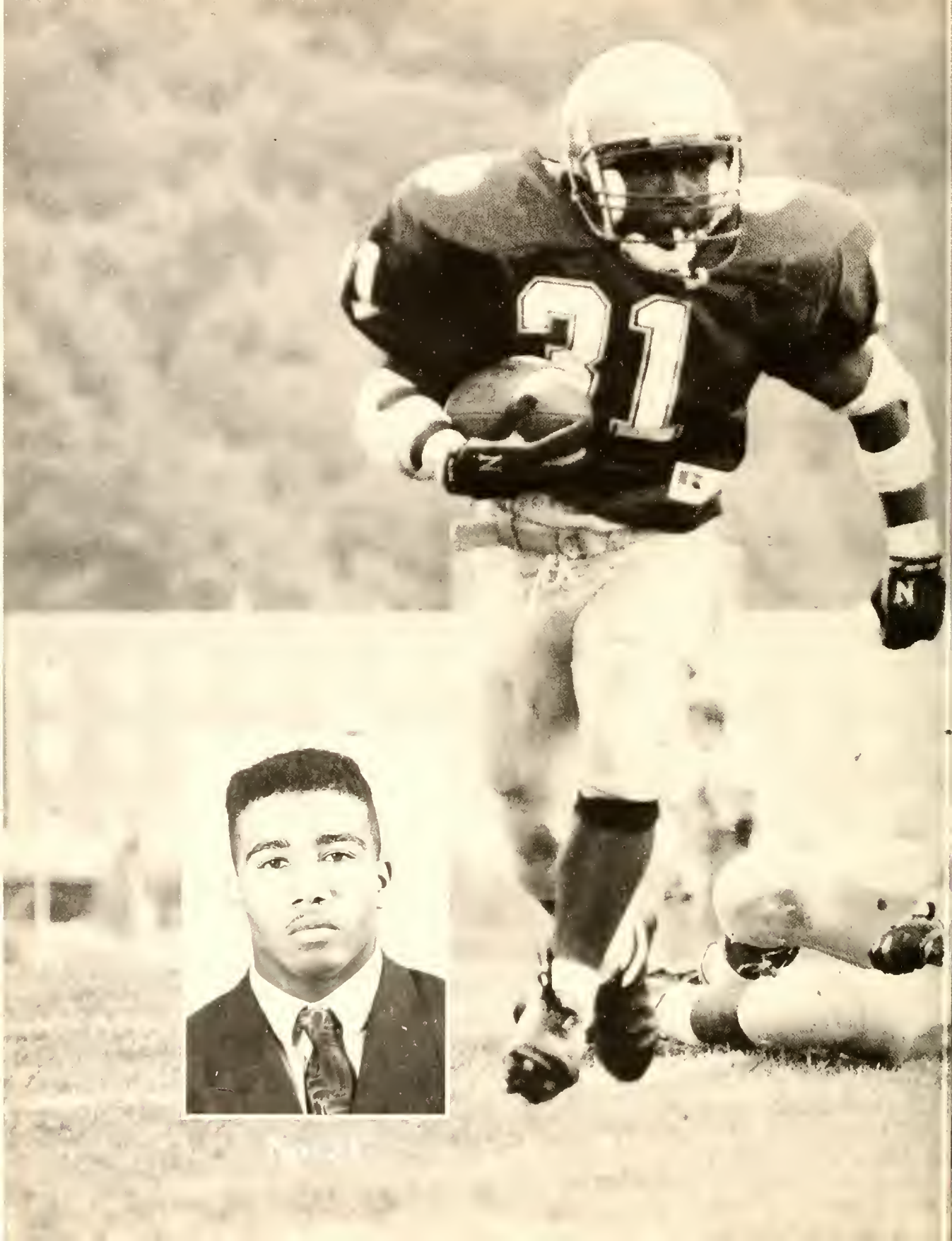
Tengone Vengchiam was given H. C. Evans Fidelity Award by Dr. Crain.



Trustees Dr. Carter Wiseman (far right) and Mrs. Roma Melton presented Trustee Leadership Scholarships to Waynette Gentle and Parker Grubbs.



(at left) Brad Crain received dedication of '93 Ontario for his 8½ years of service to the college; the 1988 yearbook was also dedicated to Dr. Crain.





IN MEMORIAM
GARY PHILLIPS, Jr.
SEPT. 9, 1974 - JAN. 2, 1993

ONTAROGA Volume LXI

to the ancient Indian it meant a place of rocks and hills

1993 YEARBOOK STAFF



Don Baker
Advisor
Layout, Design Production



Scott Ballard
Photography
Copy



Joyce Baker
Production, Typist



Joanne Franklin
Typist



Pattie Benfield
Production, Typist



Mandy Poplin
Classes, Athletics, Organizations



Jennifer Turner
Classes, Athletics, Features



Chad Quesenberry
Classes, Athletics





