



Space-based NO_x emission estimates over remote regions improved in DECSO

Jieying Ding^{1,2}, Ronald Johannes van der A^{1,3}, Bas Mijling¹, and Pieter Felicitas Levelt^{1,2}

¹R&D Satellite Observations, Royal Netherlands Meteorological Institute (KNMI), De Bilt, the Netherlands

²Department of Geoscience and Remote Sensing (GRS), Delft University of Technology, Delft, the Netherlands

³School of Atmospheric Physics, Nanjing University of Information Sciences and Technology, Nanjing, China

Correspondence to: Jieying Ding (ding@knmi.nl)

Received: 12 September 2016 – Discussion started: 20 October 2016

Revised: 20 February 2017 – Accepted: 21 February 2017 – Published: 10 March 2017

Abstract. We improve the emission estimate algorithm DECSO (Daily Emission estimates Constrained by Satellite Observations) to better detect NO_x emissions over remote areas. The new version is referred to as DECSO v5. The error covariance of the sensitivity of NO_2 column observations to gridded NO_x emissions has been better characterized. This reduces the background noise of emission estimates by a factor of 10. An emission update constraint has been added to avoid unrealistic day-to-day fluctuations of emissions. We estimate total NO_x emissions, which include biogenic emissions that often drive the seasonal cycle of the NO_x emissions. We demonstrate the improvements implemented in DECSO v5 for the domain of East Asia in the year 2012 and 2013. The emissions derived by DECSO v5 are in good agreement with other inventories like MIX. In addition, the improved algorithm is able to better capture the seasonality of NO_x emissions and for the first time it reveals ship tracks near the Chinese coasts that are otherwise hidden by the outflow of NO_2 from the Chinese mainland. The precision of monthly emissions derived by DECSO v5 for each grid cell is about 20 %.

influence of those air pollutants. However, it is difficult to obtain up-to-date emission data. Bottom-up emission inventories rely on gathering statistical data, which is time consuming and often results in a delay of a few years. In addition, statistics on emission-related activities and emission factors introduce large uncertainties to the bottom-up emission inventories. Satellite observations provide long-term NO_2 column concentrations with a global coverage and they are able to improve NO_x emission estimates (Streets et al., 2013). Emissions of dominant sources like megacities can be derived from satellite observations using a simple mass-balance approach (Martin et al., 2003). Smaller sources, like biogenic emissions or ship tracks are more difficult to distinguish, especially if they are close to the dominant sources. These lower NO_x emissions are derived from satellite observations with inversion techniques, taking into account the transport of NO_x (e.g. Stavrakou et al., 2008; Miyazaki et al., 2012).

Mijling and van der A (2012) developed the inversion algorithm DECSO (Daily Emission estimates Constraint by Satellite Observation) based on an extended Kalman filter with a regional chemical transport model (CTM). This algorithm takes the transport of NO_x from its source into account by including 2-D trajectory analysis in the sensitivity of NO_2 concentration on NO_x emissions. Other NO_x emission studies based on a Kalman filter often use the decoupled direct method to calculate the sensitivity (Napelenok et al., 2008; Tang et al., 2013) or an ensemble Kalman filter (Miyazaki et al., 2012). The emission estimates of DECSO improve upon existing emission inventories in the Middle East and South Africa (www.globemission.eu). The DECSO algorithm has the capability to show trends and seasonality on a provin-

1 Introduction

Nitrogen oxides ($\text{NO} + \text{NO}_2 = \text{NO}_x$) are important air pollutants and play a crucial role in climate change by catalysing the formation of tropospheric ozone and forming secondary nitrate aerosol (Shindell et al., 2009; IPCC, 2014). Anthropogenic emissions are the main source of NO_x . Better emission estimates may help policymakers to mitigate the adverse

cial scale for China and the derived emissions are in good agreement with the bottom-up inventories in Asia (Mijling et al., 2013). Ding et al. (2015) improved the algorithm performance by updating the CTM and adding a satellite data quality control. The improved temporal and spatial resolution enables detection, e.g. of the NO_x reductions during the Nanjing Youth Olympic games in August 2014.

Estimating emissions from satellite data is relatively new, and many developments are ongoing in this field. General weak issues in inventories are their low temporal resolution and the lack of information for small sources in remote areas. The seasonal variability is normally poorly captured in emission inventories. Mijling and van der A (2012) showed that DECSO is able to detect the shipping emissions along the Chinese coastal seas, which are not included in the anthropogenic emission inventories INTEX-B (Zhang et al., 2009) and MIX (Li et al., 2017; <http://www.meicmodel.org>). However, Ding et al. (2015) mentioned that emissions from DECSO have also large day-to-day fluctuations due to the noise in the observations. In remote ocean areas where emissions should be close to zero, we still see relatively high emissions, which we refer to as background noise. This background noise is appearing in low-emission areas, where random negative emissions derived from the measurements are set to zero because the CTM cannot handle negative emissions. This results in, on average, a positively biased emission for this region. This background noise can have an unrealistic seasonal cycle. Because of this background noise, weaker emission sources, such as shipping emissions or small isolated power plants are difficult to distinguish. A new version of DECSO, referred to as DECSO v5, has been developed with special attention for those issues. The improvement in observing low emissions will be demonstrated for two cases. One case is for biogenic sources and fire emissions in rural areas, which are relatively weak over often-large areas. The second case is for shipping emissions close to the coast, where low emissions exist in proximity to large sources of cities along the coast. Both emission sources have large uncertainties in existing inventories.

Estimates of biogenic emissions contain large uncertainties. In regions where fire emissions from forests and biomass burning are dominant, the seasonal cycle of NO_x is not the same every year, since burnt areas are changing from year to year due to human activities (Schultz et al., 2008) and climate (Westerling et al., 2006). Van der Werf et al. (2006) showed that the seasonality of fire emissions varied a lot from 1997 to 2004 in central Asia. He et al. (2011) studied biomass emissions in the Pearl River Delta region by using a bottom-up approach and showed that the uncertainties of NO_x biomass burning emissions vary from 80 to 220 %.

Recent studies point out that ship emissions of NO_x make a significant contribution to the total NO_x budget. The global shipping emission inventories have large differences and high uncertainties from the statistical sampling of ship tracks and the simplified parameterizations used in shipping emis-

sion calculations (Wang et al., 2008). Shipping emissions, e.g. in the Indian Ocean, the Red Sea and the European seas are detected by SCIAMACHY, GOME, GOME-2 and OMI satellite observations (Beirle et al., 2004; Richter et al., 2004; Franke et al., 2009; Vinken et al., 2014). Richter et al. (2004) mentioned that the signal of ship tracks towards China and Japan is lost in the transported NO₂ plume from the sources over land, so that it is difficult to estimate emissions by using the mass-balance approach. By using the improvements of DECSO described in this paper, we will show that DECSO is able to provide NO_x shipping emission estimates near the coast of China and detect the seasonality of NO_x emissions related to biogenic sources.

To improve the issues mentioned above, here we focus on the performance of the DECSO algorithm over low-strength emission regions. We improve the error covariances of the sensitivity of NO₂ column observations to gridded NO_x emissions. Adding an emission update constraint instead of using the satellite data quality control mentioned in Ding et al. (2015) removes the unrealistic fluctuations of emissions. As a consequence, we use more information from the satellite observations. With the updates applied to DECSO, the algorithm is better able to detect shipping emissions and other small sources and shows a more realistic seasonal cycle, especially over the low emission areas. In addition, we switch off the biogenic NO_x emissions in the CTM to calculate total NO_x emissions instead of only anthropogenic emissions. In Sect. 2, we briefly describe the DECSO algorithm. The improvements are presented in Sect. 3. We have applied the DECSO algorithm to the region of eastern China and for this area the improvements will be demonstrated. Monthly variability of emissions in different areas of East Asia and the shipping emissions over the China coastal region are shown in Sect. 4, followed by a discussion of the results in Sect. 5.

2 Emission estimates with the DECSO algorithm

DECSO is an emission estimate algorithm for short-lived trace gases, which updates daily emissions on a mesoscopic scale with a spatial resolution of $0.25^\circ \times 0.25^\circ$. It constrains NO_x emissions by combining the simulated NO₂ concentrations of a CTM with satellite observations. The essential part of DECSO is the calculation of the sensitivity of the NO₂ column concentrations (on a footprint of the satellite) to the gridded NO_x emissions, in which the transport of NO₂ over the model domain is taken into account. The transport is calculated using an ensemble of 150 isotopic 2-D trajectories for each grid cell. For the trajectory analysis, we use the operational meteorological forecast of the European Centre for Medium-Range Weather Forecasts (ECWMF) interpolated into half an hour time steps. The inversion method used in DECSO is based on an extended Kalman filter. The emissions and their error covariance derived from DECSO are independent of the a prior emission inventory after a spin-

up time of about 3 months. Note that the assimilation with observations based on Kalman filter leads to the “true” emission estimates with a typical time lag (Brunner et al., 2012; Ding et al., 2015). Although the emissions are calculated on a daily basis, the final product of DECSO is a monthly emission database similar as for bottom-up inventories.

We use the Eulerian offline CTM CHIMERE v2013 (Menut et al., 2013) in DECSO. To run a simulation of CHIMERE, external forcings like meteorological fields, primary pollutant emissions and chemical boundary conditions are required. We have implemented CHIMERE on a 0.25° × 0.25° horizontal resolution over the regions of Europe, Middle East, South Africa, India and East Asia with eight vertical layers up to 500 hPa. The model is driven by the operational meteorological forecast of the ECWMF. The land use information we use for CHIMERE is from the GlobCover Land Cover database in 2009.

The satellite observations in this study are measured by the Dutch–Finnish Ozone Monitoring Instrument (OMI; Lev-elt et al., 2006) on NASA’s EOS-Aura satellite. The spatial resolution is 24 × 13 km² at nadir and increases to about 150 × 28 km² at the edge of the swath. Its overpass time at the equator is around 13:30 local time. We use the tropospheric NO₂ column data of the Dutch OMI NO₂ retrieval (DOMINO) algorithm version 2 (Boersma et al., 2011). The data set can be found on the Tropospheric Emissions Monitoring Internet Service (TEMIS) portal (<http://www.temis.nl>). We use the same data filter criteria for the DOMINO v2 data as mentioned in Ding et al. (2015). The pixels affected by the so-called row anomaly (KNMI, 2012) and the four pixels at each side of the swath are filtered out. We use observations with a surface albedo lower than 20 % and a cloud radiance fraction lower than 70 %. The observations with clouds below 800 hPa are also excluded, because cloudy and bright surface scenes have a large influence on the quality of the retrieval product. After this filtering, we typically have about 2000 observations per day for each domain.

To compare the simulated concentrations from CHIMERE with satellite observed tropospheric columns, the modelled vertical profiles are extended from 500 hPa to the tropopause with a climatological partial column (2003–2008 average) simulated by the global CTM TM5 with a horizontal resolution of 2° × 3° (Huijnen et al., 2010). We spatially average the simulated profiles on the model grid cell over the OMI footprints and apply the averaging kernel to the modelled profile. A more detailed description of DECSO can be found in Mijling and van der A (2012) and Ding et al. (2015).

3 Improvement of DECSO

3.1 Observation and representativeness error calculation

The inversion in DECSO is based on the extended Kalman filter, which assimilates emissions using a CTM to relate the emissions to daily observed concentrations. The analysis of the emission e^a is calculated from the observed NO₂ column concentrations y at time t and the forecasted emission e^f at time t using equation:

$$e^a(t) = e^f(t) + \mathbf{K}(y - H[e^f(t)]), \quad (1)$$

in which \mathbf{K} is the Kalman gain matrix, and H is the observation operator (translating emissions into column concentrations) which includes the CTM, the extension of the simulated column to the tropopause, the average kernel from the satellite retrieval, and the interpolation to the satellite footprint. $e^f(t)$ is equal to the analysis of the emissions from the previous day, following a persistent emission model. The Kalman gain matrix \mathbf{K} combines error covariances of observations, model representation and emissions to determine how much information from the observations is to be used in the emission analysis:

$$\mathbf{K} = \mathbf{P}^f(t) \mathbf{H}[\mathbf{H}\mathbf{P}^f(t) \mathbf{H}^T + \mathbf{R}]^{-1}. \quad (2)$$

\mathbf{P}^f is the error covariance matrix of the forecasted emissions. \mathbf{H} is the sensitivity matrix (Jacobian) describing how the NO₂ column concentrations on a satellite footprint depend on gridded NO_x emissions, i.e. having matrix elements $\mathbf{H}_{ij} = \frac{\partial y_i}{\partial e_j}$. Typical dimensions of \mathbf{H} are about 2500 (daily observations) × 16 000 (emission grid cells).

\mathbf{R} is the error covariance associated with observation operator \mathbf{H} . The \mathbf{R} matrix combines the observation error of the tropospheric NO₂ columns and the representation error introduced by the inaccuracy of the CTM and its projection onto the measured NO₂ column on the satellite footprint. \mathbf{R} cannot be calculated directly, but we can derive its diagonal elements with help from the statistics of the Observation minus Forecast (OmF) of the NO₂ columns:

$$\sigma_{\text{OmF}}^2 = \sigma_{\mathbf{R}}^2 + \sigma_{\text{preM}}^2 = \sigma_{\text{obs}}^2 + \sigma_{\text{repr}}^2 + \sigma_{\text{preM}}^2. \quad (3)$$

The OmF variance consists of the variance of the \mathbf{R} matrix ($\sigma_{\mathbf{R}}^2$; consisting of the observation error σ_{obs}^2 from the retrieval method and the representation error σ_{repr}^2) and the variance of the emission estimates propagated into the simulated column concentrations (σ_{preM}^2). σ_{preM}^2 is taken from the diagonal elements of matrix $\mathbf{H}\mathbf{P}^f(t) \mathbf{H}^T$.

In the previous versions of DECSO, the representation errors were calculated based on daily statistics of OmF since σ_{obs}^2 and σ_{preM}^2 are known. The observation errors were initially taken from the observations and later described by an empirical exponential relation with the observed column in

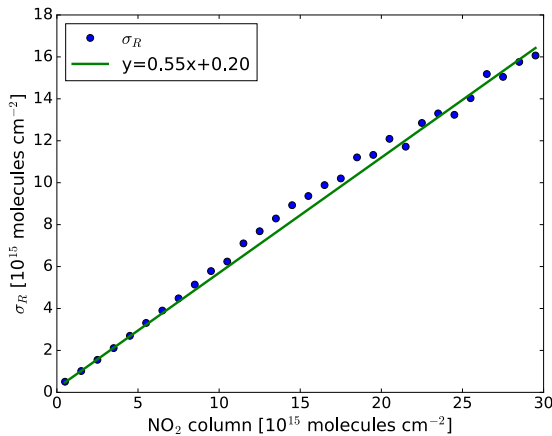


Figure 1. The relation between σ_R and the average of the observed and modelled NO₂ column. The green line is the fit result.

version 3 (Ding et al., 2015). Mijling and van der A (2012) assumed that σ_{repr} is linearly related to the simulated tropospheric column concentration, and derived this ratio from daily OmF statistics. However, from day to day the number of observations varies a lot due to variability in cloudiness and scenes of observations (e.g. ocean vs. populated land). In days with few observations, the statistics are insufficient to derive the proper representation errors. This results in a lot of unrealistic day-to-day variations in σ_{repr} . In addition, because the observation coverage is smaller in wintertime than in summertime, the representation error is determined to be less accurate in winter due to the lack of statistics. Since emission updates (by Eq. 1) are sensitive to the derived **R** matrix (used in Eq. 2), this may lead to artificial seasonal fluctuations. We noticed that the average of **R** matrix elements is higher in winter than in summer, leading to biased emissions in summertime.

To improve this issue, we study the OmF statistics for monthly and yearly periods and directly relate σ_R^2 to the NO₂ column instead of calculating the σ_{obs}^2 and σ_{repr}^2 separately. We run DECSO over East Asia (18–50° N and 102–132° E) for 2013.

By binning the data in intervals of 1×10^{15} molecules cm⁻² over the range of NO₂ column values, we use the OmF statistics and Eq. (3) to derive σ_R per bin. For all observations 2013 we plot σ_R against the average c of observed and modelled NO₂ column and find a linear relation (see Fig. 1):

$$\sigma_R = \varepsilon_{\text{rel}}c + \varepsilon_{\text{abs}}, \quad (4)$$

with relative coefficient $\varepsilon_{\text{rel}} = 0.55$ and absolute offset $\varepsilon_{\text{abs}} = 0.20$. Using data from other periods we found that this relation has very little variation from month to month and from year to year. Ding et al. (2015) used tuned synthetic error estimates for the satellite observations instead of the er-

rors given by the retrievals. Tuning the error estimates of the satellite observations, as done for DECSO v3b, is no longer needed.

We apply this new linear relation in DECSO-exp. Figure 2 shows the comparison of yearly average emissions over the ocean for DECSO-exp and DECSO v3b. We see that the noise over remote areas is significantly reduced. The shipping emissions are smaller in DECSO-exp, but they are still clearly visible against the lower background values. The analysis of shipping emissions will be further discussed in Sect. 4. The monthly emissions in 2013 over a selected remote ocean area (20 to 25° N, 125 to 130° E) derived using DECSO-exp are much lower than DECSO v3b (Fig. 3). We see the emissions derived by DECSO v3b vary from 4 to 10 Gg N month⁻¹ with a summer peak. These emissions are too high for this area and the seasonal cycle is artificial. Since shipping emissions are the only emission source of NO_x in this part of the ocean where few ships are passing, the emissions over this area should be close to zero. The emissions derived by DECSO-exp are 10 times lower in summer compared to the emissions of DECSO v3b. The artificial seasonality also disappeared, since the higher values of DECSO-exp in April, May and December are within the range of emission uncertainties. By using the linear relation of σ_R with the NO₂ column, the calculation of σ_R is simplified, the background noise is reduced by 90 %, from about 16.7 Mg month per grid cell to about 1.7 Mg month per grid cell, and the artificial seasonal cycle has been removed over low emission areas.

3.2 Emission update constraint

Occasionally large differences between observed and modelled NO₂ columns appear, which are probably related to wrong satellite retrievals during high aerosol events (Ding et al., 2015). Several studies pointed out that the DOMINO retrieval algorithm does not properly take the effects of high aerosol concentration into account (Leitão et al., 2010; Lin et al., 2014). To reduce false emission updates due to day-to-day fluctuations, Ding et al. (2015) used an OmF criterion to filter out satellite data that show large differences compared to the model simulations caused by these high aerosol events. Although filtering out these satellite data solves the problem, it may also delete correct satellite data. For example, if a new power plant is built or an old one is removed, it can cause large changes of NO₂ concentrations in a single day. This is not simulated correctly by the CTM. With the OmF criteria, the emission updates will be unnecessarily slow since a lot of satellite data with large differences will not be used in the data assimilation. As we describe below, we improve the DECSO algorithm by using an emission update constraint to avoid unrealistically high fluctuations in the emission estimates.

In the DECSO algorithm, we use a persistent emission model, which assumes that the forecasted emissions of the current day are equal to the analysis of the emissions of the

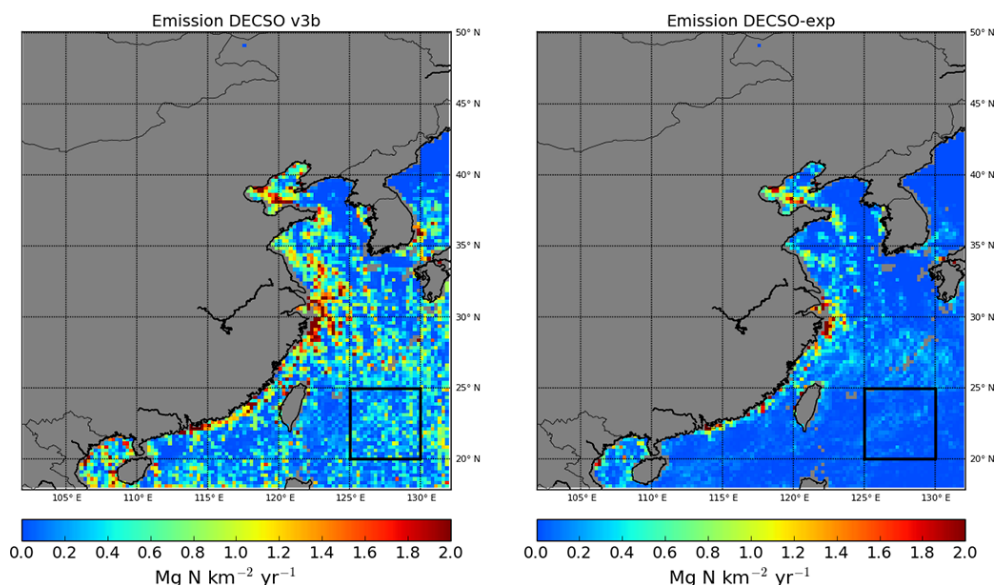


Figure 2. The comparison of NO_x emissions over the ocean derived with DECSO v3b (left) and DECSO-exp (right).

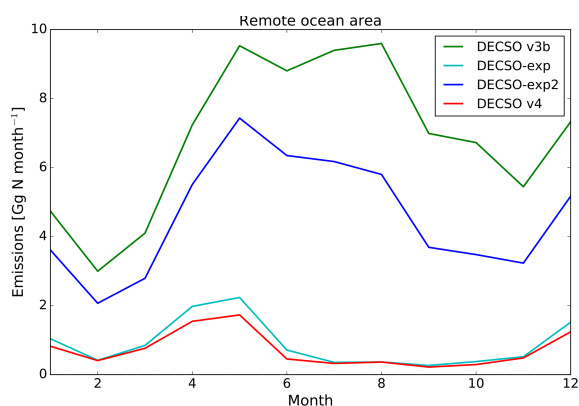


Figure 3. The total monthly NO_x emissions over a remote ocean area [20 to 25° N, 125 to 130° E] derived with DECSO v3b, DECSO-exp, DECSO-exp2 and DECSO v4.

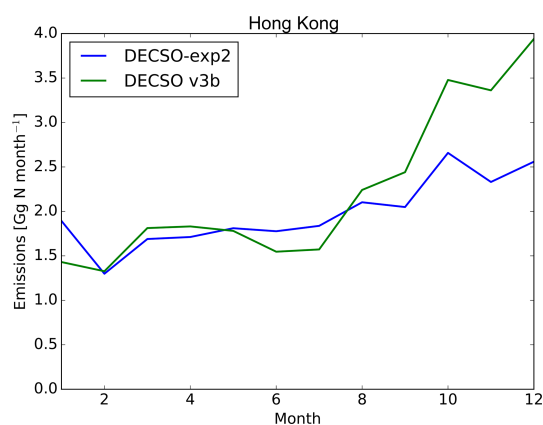


Figure 4. The monthly emissions in Hong Kong in 2013. DECSO-exp2 indicates the emissions derived using DECSO with the 3σ constraint. DECSO v3b indicates the emissions derived with the OmF filter.

previous day, $e^f(t) = e^a(t-1)$. Assuming an optimal Kalman filter, the error of these emissions should have a Gaussian distribution, thus with 99.7 % of emissions within the range of 3σ from the mean. Therefore, we will use a 3σ interval to constrain the emission updates instead of the OmF criterion. To be able to handle both wrong observations, e.g. due to high aerosol load as well as new emission sources, we apply the following procedure during the data assimilation process: in case the emission update is larger than 3σ, we regard it outside the emission range and set the emission update equal to 3σ.

We run DECSO with this 3σ constraint for 2013 to test this new procedure, which is referred to as DECSO-exp2. With the new constraint, we use 10 % more satellite observations. Figure 4 shows that with the 3σ emission update

constraint, the emission in Hong Kong is almost constant for the whole year with a small increase in winter. The emissions of DECSO v3b, however, are much higher (a factor of 2) in December than in January, which does not seem realistic since the vehicle emissions are the main source in Hong Kong and the seasonality is obscure (Kwok et al., 2010). Over the ocean, the fluctuation of emissions becomes smaller with the new improvement compared to DECSO v3b (Fig. 3). Note that the **R** matrix improvement is not applied in this run and therefore the improvement is only caused by the 3σ constraint, which can also be seen in Fig. 3. With DECSO v4, the improvements on **R** matrix and the 3σ constraint are combined. The monthly emission data over East Asia of this version are available on www.globemission.eu.

3.3 Logarithm of emission

Negative emission estimates in DECSO are set to zero, because the CTM is not able to handle negative emissions. As a workaround, negative emissions are set to zero while the positive emissions in the nearby area are adjusted to compensate for the introduced bias. To make sure that the emission estimates remain positive, Brunner et al. (2012) replaced the emission state vector by its logarithmic value, assuming that the errors of this new state are Gaussian distributed. The assumption is not entirely correct in our case, but it is still a reasonable approximation.

To assess the effect of this approach in our setting, we define the logarithmic emissions ($x = \ln(e)$) as the state vector in the Kalman filter. As a consequence, the observation operator H (see Eq. 1) needs to be reformed. H^1 is the sensitivity calculator describing how the NO₂ column concentrations C depend on logarithmic emissions x :

$$C = H^1(x) = H(\exp(x)). \quad (5)$$

In the Kalman filter, each element \mathbf{H}_{ij}^1 of Jacobian matrix \mathbf{H}^1 of the new observation operator can be easily derived as shown by Brunner et al. (2012):

$$\mathbf{H}_{ij}^1 = \mathbf{H}_{ij} \exp(x_j) \equiv \mathbf{H}_{ij} e_j. \quad (6)$$

In addition to the Jacobian, we need the error covariance of the modelled logarithmic emissions. Based on the derivative of the logarithmic value of the emission with respect to the emission itself,

$$\frac{dx}{de} = \frac{1}{e}, \quad (7)$$

the logarithmic emission error q^1 can be expressed as follows:

$$q^1 = \frac{q}{e}, \quad (8)$$

where q is the error of the modelled emissions. Mijling and van der A (2012) gave an assumption for the dependence of the emission error q on the emissions e :

$$q = \varepsilon_{\text{abs}} \exp\left(-\frac{\varepsilon_{\text{rel}}}{\varepsilon_{\text{abs}}} e\right) + \varepsilon_{\text{rel}} e. \quad (9)$$

ε_{abs} (0.02×10^{15} molecule $\text{cm}^{-2} \text{h}^{-1}$) and ε_{rel} (0.05) are the absolute and relative errors that are the dominating emission errors for low and high emissions respectively. By combining Eqs. (8) and (9), we get the error for the logarithmic emissions. However, if the emissions are close to zero, the error will become infinite, leading to computational errors. To avoid this, we define a new equation for q^1 to calculate the emission error, which leads to similar emission errors as in previous DECSO versions and avoids infinite error values:

$$q^1 = \alpha_1 \exp\left(-\frac{\alpha_1}{\alpha_2} x\right) + \alpha_2. \quad (10)$$

By setting $\alpha_1 = 0.009$ and $\alpha_2 = 0.02$, the emission error $q = q^1 e$ is in good agreement with the original q calculated in Eq. (9).

Using the new observation operator and the logarithmic emission error, we implement the logarithmic method based on DECSO v4 and run it for 2013, which is referred to as DECSO v4log. However, the results of this logarithmic method are not improved compared to DECSO v4. Instead, it increases the positive bias over low emission areas by a factor of 2. Also, the spin-up time is increased for low emission areas, which means it cannot detect the emission changes on a small temporal scale. Since the improvements by using the new \mathbf{R} matrix and 3σ constraint for emission updates already reduce the background noise and remove the artificial seasonal cycle, we decide not to use the logarithmic approach in this study.

3.4 The threshold of the sensitivity matrix and the effect of biogenic NO_x emissions

A well-defined sensitivity matrix \mathbf{H} (see Eq. 2) is essential for a well-performing Kalman filter. As described by Mijling and van der A (2012), the calculation of \mathbf{H} involves simplified 2-D trajectories to describe the transport of the concentration plumes over the emission grid. In some cases the bulk of the plume is shielded by clouds and the satellite only monitors a fraction of the plume at its edge. The edge of the plume is usually characterized by low sensitivity matrix \mathbf{H} elements resulting from trajectory calculations with a high uncertainty. The inversion becomes ill-conditioned, resulting in strongly fluctuating emission updates with high associated uncertainties. These emission updates are based on limited information from the satellite. Therefore we have set a minimum value for the \mathbf{H} matrix elements. In the previous versions of DECSO, we used 0.05 h as the minimum value. This value is still too low for the scarce winter observations at high latitudes leading to large biases, especially in these locations. In this study we set the threshold value to 0.1 h based on several tests using different threshold values.

In DECSO v3b and v4, the derived NO_x emissions represent anthropogenic emissions. Biogenic emissions are generated internally in CHIMERE v2013 following a parameterization (including land-use data) by the MEGAN model (Guenther et al., 2006). However, Li et al. (2007) showed that emission factors of soil NO emissions in the same type of forests can differ a lot. This introduces large uncertainties in estimated biogenic emissions. Figure 5 shows the ratio of biogenic NO emissions from MEGAN and anthropogenic NO_x emissions from MIX. Biogenic emissions are about 5 % of total anthropogenic emissions in rural provinces in summer. Unfortunately overestimation of the MEGAN biogenic emissions in those rural areas can introduce biases in the local anthropogenic NO_x emission estimates by DECSO. For instance, in case MEGAN biogenic NO_x emissions are overestimated, the NO_x emissions derived by DECSO will be

Table 1. Summary of main differences in various versions of DECSO.

DECSO version	Description
v3b	The base version described in Ding et al. (2015)
exp	Experimental version with improvement of the R matrix
exp2	Experimental version with improvement of the 3σ constraint
v4	Combined the improvements in exp and exp2
v4log	Logarithmic version of v4
v5	Estimate total emissions instead of only anthropogenic emissions

negative. As we mentioned in Sect. 3.1, DECSO sets negative emissions to zero and adjusts positive emissions in the surrounding area for compensation and mass balance.

By excluding biogenic NO_x emissions in CHIMERE, we derive the total surface NO_x emissions from satellite observations. The total emissions from the surface include anthropogenic, biogenic and fire emissions. Together with the improvement of **R** matrix, the 3σ constraint and the new threshold of the **H** matrix elements, this new DECSO algorithm is referred to as DECSO v5 (the monthly emission results calculated with this version are also provided on www.globemission.eu). The main differences of the various versions of DECSO mentioned in this paper are summarized in Table 1.

4 Results

We run DECSO v5 for the period 2012 to 2014 over East Asia. The final results are monthly emissions for this period, which means that irregular emissions and emissions for short time periods (for example from fires or lightning) are typically averaged over a month. As we showed in Sect. 3, the improvements in DECSO reduce the background noise and remove artificial season cycles over low-emission areas. Due to this, it will enable better emission estimates over low emission regions like ship tracks in the ocean, small cities in deserts, grassland, etc. Below we demonstrate the improvements in the emission estimates for these specific cases.

4.1 Seasonal cycle analysis

One way to validate the improvement of emission data derived by DECSO v5 is by comparing the forecast results of the CHIMERE model used in DECSO v5 and DECSO v3b with OMI satellite observations over the model domain. We compared the average of NO₂ column per season per grid cell over the whole domain. The comparison shows that the improvement of DECSO v5 in wintertime (December to February) is significant. The modelled NO₂ columns of DECSO v5 are in much better agreement with OMI satellite observations in winter with a correlation coefficient (*R*) of 0.96 while *R* is only 0.87 for DECSO v3b. Yearly averages and the other seasonal averages of NO₂ columns of both versions are in good agreement with OMI satellite observations, especially in summer. The *R* in summer of both versions is 0.97. The better agreement of DECSO v5 modelled columns with OMI satellite observations in wintertime results in a better seasonal cycle of emission estimates.

We compare the seasonal cycle of NO_x emissions on a provincial level in 2012 with the MIX emission inventory of 2012 (the latest year available in MIX) over China and MIX emission inventory (Li et al., 2017) outside of China. We find that in many provinces the seasonal cycles derived by DECSO are consistent with the MIX inventory. However, in most rural provinces, the difference between DECSO v5 and MIX is very large. Based on the ratio of biogenic emissions of MEGAN and anthropogenic emissions of the MIX inventory shown in Fig. 5, we divide provinces in China into two groups. We select a group of 13 provinces with large areas of relatively high biogenic emissions as rural provinces. The remaining 16 provinces in the domain are considered anthropogenic emission provinces. The *R* (correlation coefficient) of seasonal emissions for anthropogenic emission provinces between DECSO v5 and MIX 2012 is 0.6, while for rural provinces the comparison is much worse (*R* is negative in most rural provinces) because MIX does not include biogenic NO_x emissions.

Figure 6 shows the seasonal cycle of two provinces as an example. Guangxi province is a typical rural province in China. About 60 % of the province is covered by forest (www.forestry.gov.cn), which is about 14×10^5 km². Both DECSO v5 and v3b show high emissions from spring to summer. The NO_x emissions estimated by DECSO v3b are only anthropogenic because biogenic emissions from MEGAN are calculated internally by the CTM. As we mentioned in Sect. 3, DECSO v3b has a high background noise with an unrealistic seasonal cycle, which explains the difference with DECSO v5. We calculate that in the Guangxi province, the background noise of DECSO v3b contributes to a maximum of about 6 in winter and 17 Gg month⁻¹ in summer. By removing the background from DECSO v3b, the summer peak of emissions disappears. We see that monthly NO_x emissions from March to September derived by DECSO v5 are much higher than the emissions of MIX in 2012. The differ-

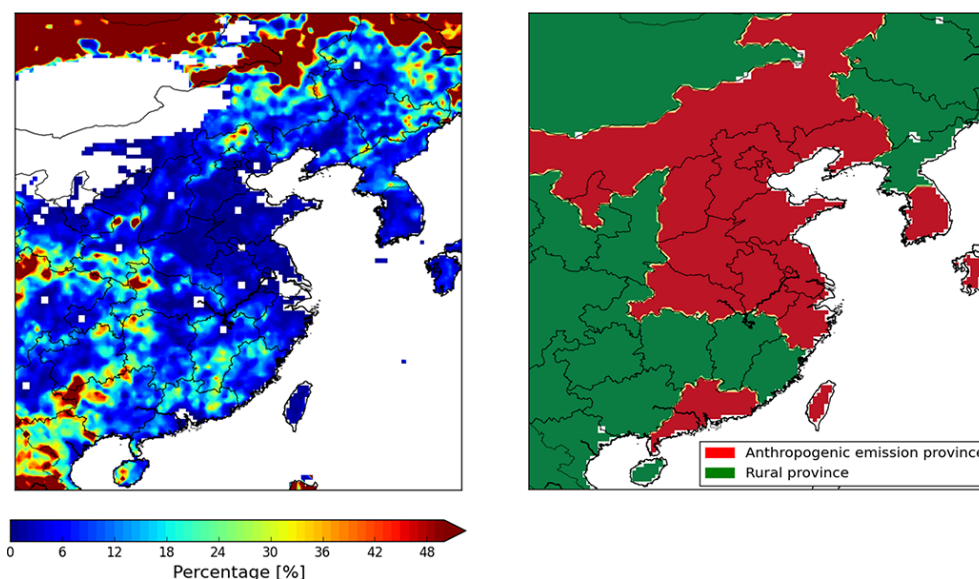


Figure 5. Ratio between biogenic and anthropogenic NO_x emissions in summer (left) and the distribution of anthropogenic emission provinces and rural provinces (right). Biogenic emissions are from the MEGAN model used in CHIMERE. Anthropogenic emissions are from the MIX (2012) emission inventory.

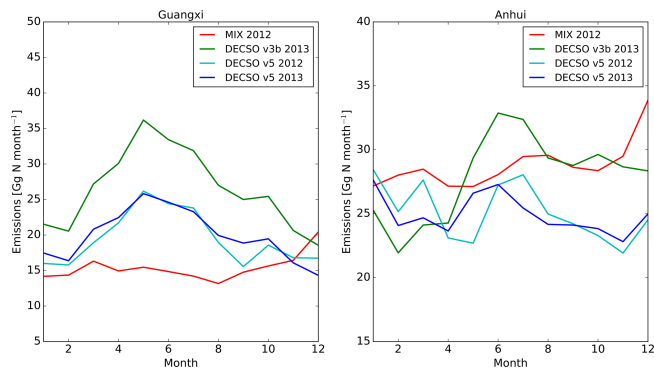


Figure 6. Monthly total emissions estimated by DECSO v5 (blue line) and DECSO v3b (green line) of Guangxi province (left) and Anhui province (right) in 2013. The cyan line and the red line represent monthly NO_x emissions from DECSO v5 and the MIX inventory in 2012.

ence is probably due to biogenic emissions since MIX only includes anthropogenic emissions. DECSO v5 estimates include both anthropogenic and biogenic emissions. In summer, the emissions derived by DECSO v5 are about 50 % higher than in MIX. In Fig. 5, we see that the biogenic emissions are 7–8 % of anthropogenic emissions in summer based on the information given by MEGAN. However, the uncertainties of biogenic emissions derived by MEGAN are at least 300 % (Guenther et al., 2006, 2012). Li et al. (2007) listed soil NO emission rates from different forests in the world including their results of broadleaf and pine forests in southern China. By using their range of emission rates, we

calculate the soil NO emissions in Guangxi in a range from 30 to 822 Gg N yr⁻¹ by multiplication with the forest area, the upper limit being 3.5 times higher than the yearly total NO_x emissions derived by DECSO v5. This shows that the uncertainty in biogenic emissions from bottom-up emissions is quite high. DECSO v5 provides independent information about total surface NO_x emissions in the region since it is difficult to distinguish source types of the emissions.

Anhui province is an example of an anthropogenic emission province. In this province NO_x emissions derived by DECSO v5 are lower than MIX 2012. The peak that appears in March 2012 of DECSO v5 is probably due to high soil NO_x emissions which are not included in MIX. Jaegle et al. (2005) concluded that global soil NO_x emissions can be as high as 20 % of the total NO_x emissions. Many studies demonstrate that both the usage of fertilizer and the increase of rainfall lead to significantly higher soil emissions (Bouwman et al., 2002; Jaeglé et al., 2004; Ghude et al., 2010; Cui et al., 2012). Liu et al. (2015) showed that lots of areas are overfertilized in Anhui. The climate annual report of Anhui (<http://www.ahqh.org.cn/product/yearqhmonitor.asp>) shows that in March 2012 the precipitation is 50 % higher than normal for the month, and from May to July the province had a drought. This leads to the small peak of 10 % higher NO_x emissions in March 2012. DECSO v5 also shows a peak of NO_x emissions in June 2013, which can be explained by the biomass burning in this month. The Globe Fire Emission Database (GFED) 4.0 (Giglio et al., 2013) shows large biomass burning areas in Anhui in May and June of 2013. Huang et al. (2012) pointed out that Anhui is one of the provinces with the highest agricultural fire emissions, with

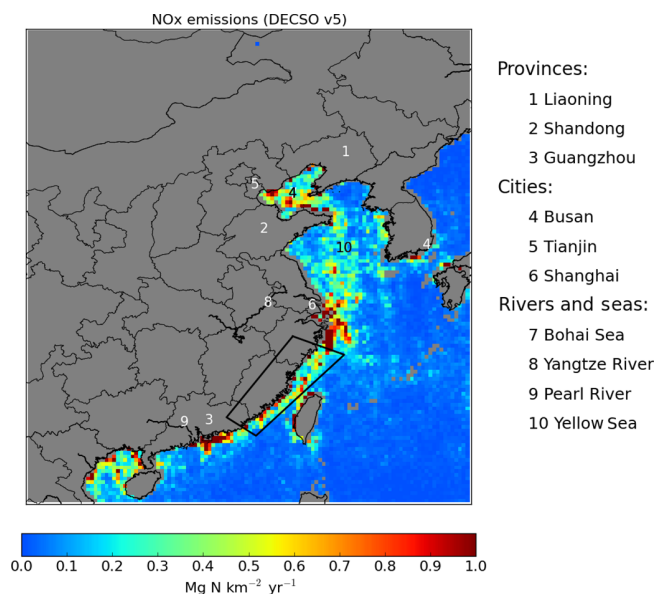


Figure 7. Emission estimates derived with DECSO v5 over the ocean in 2013. The black quadrangle indicates the selected area for analysing shipping emissions in the Taiwan Strait.

a peak in June. Stavrakou et al. (2016) conclude that the current estimates of agricultural fire emissions of post-harvest crop burning are much too low in China. These fires usually appear around the month of June, for which DECSO also shows higher emissions in Fig. 6.

4.2 Ship track emissions near the Chinese coast

Figure 7 shows the yearly average emissions over the ocean in 2013 as derived with DECSO v5. We filter out the grid cells including any part of the land because we cannot distinguish shipping emissions from land-based emissions. We see a clear ship track near the coastal area from Guangzhou to Shanghai, which disperses in the Yellow Sea. Two high emission areas are at the edge of the Yangtze and Pearl River. In the Bohai Sea, at the coast of Shandong and Liaoning province, the emissions become stronger where ships are more concentrated on the route to and from Tianjin. A strong emission area appears at the coast of South Korea around the port of Pusan. Figure 8 shows the ship locations for 1 day based on Automatic Identification system (AIS) signals, the worldwide ship position monitor system (www.shipfinder.com). Most of the ships are located close to the coast with a clear ship lane from Guangzhou to Shanghai, while ships become sparser in the Yellow Sea. We see a good correlation of the high ship densities and the high emission areas derived by DECSO v5 shown in Fig. 7. Many of the ship locations in Fig. 8 are close to the coast or on inland water and therefore are not visible in Fig. 7.

We select the Taiwan Strait area within the black rectangular shown in Fig. 7 to analyse the dependence of emis-

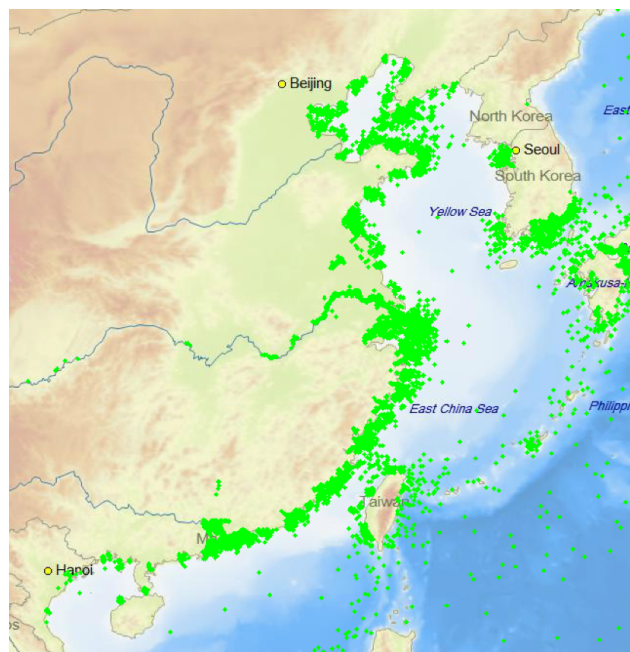


Figure 8. Ship locations at 5 November 2015 from Automatic Identification System (AIS) information (taken from <http://www.shipfinder.com/>).

sions on the distance to the coast. The total emissions for the selected area are about 49 Gg N yr⁻¹ in DECSO v5 and 92 Gg N yr⁻¹ in DECSO v3b. Figure 9 shows two peaks of the ship emissions in DECSO v5 as a function of the distance from the coast. The maximum emissions are close to the coast within the territorial waters of 24 nautical miles (44 km). The ships along the coastline contribute the most to the emissions. The second peak of emissions is shown at a distance of about 90 km from the coast. As this distance we often find cargo ships on long distance routes from and to Shanghai or Tianjin. Note that the calculated background noise (emissions in the remote area as defined in Sect. 3) is much lower than the ship emissions shown here. The background noise of DECSO v5, indicated by the dashed blue line, is as low as 0.017 Gg N per year per grid cell. The ship emissions derived by DECSO v3b show a similar pattern, but the values are two times higher due to the high background emissions (0.2 Gg N per year per grid cell).

When zooming in on Fig. 8 (see the website <http://www.shipfinder.com/>), we distinguish two ship tracks in the selected area, which are also noticed by Liu et al. (2016). One is within the territorial waters from 20 to 44 km from the coast, which we refer to as the territorial shipping. The other is within a distance of 44 to 160 km, which is referred to as the long distance shipping lane. Since it is the first time that the ship emissions near the Chinese coast are derived by satellite observations, we have no reference for the same area. However, because of the dispersion of international shipping routes into several branches, it is ex-

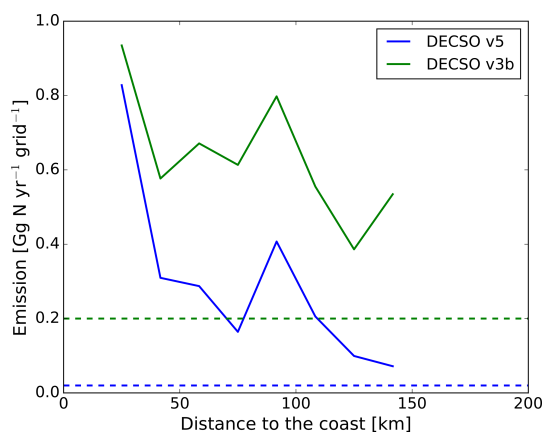


Figure 9. The relation between NO_x emissions over the ocean and the distance to the coastline in the Taiwan Strait (the quadrilateral area in Fig. 7). The blue dashed line is the background noise in DECSO v5 and the green dashed line in DECSO v3b.

pected that emissions in our long distance shipping lane will be less than in the dense ship tracks between India and Singapore and in the Red Sea that have been studied by other authors. By dividing by the 800 km length of the ship lane, the emissions are about $0.025 \text{ Gg N km}^{-1} \text{ yr}^{-1}$ in DECSO v5. Beirle et al. (2004) estimated that the ship emissions from Sri Lanka to Indonesia were about 10 to 73 Gg N yr^{-1} (0.005 to $0.038 \text{ Gg N km}^{-1} \text{ yr}^{-1}$) from 1996 to 2001. For the same area but from 2002 to 2007, Franke et al. (2009) estimated the ship emissions were about 90 Gg N yr^{-1} ($0.047 \text{ Gg N km}^{-1} \text{ yr}^{-1}$). Based on the study of Richter et al. (2004), the ship emissions for the Red Sea area are about $0.03 \text{ Gg N km}^{-1} \text{ yr}^{-1}$ from 2002 to 2004. The magnitude of the shipping emissions over a long distance shipping lane derived by DECSO v5 seems to be in agreement with these studies. The emissions derived from DECSO v5 in the Chinese territorial waters are much higher than for the long distance shipping, which seems a good reflection of the much higher density of ships in these waters.

5 Discussions and conclusions

We have improved the DECSO algorithm to calculate better emission estimates over remote emission regions. DECSO v5 estimates total NO_x emissions instead of anthropogenic emissions to avoid the bias introduced by the uncertainties of biogenic emissions by MEGAN in the low emission areas. With a more solid approach of calculating error covariances of the sensitivity of NO₂ column observations to gridded NO_x emissions, DECSO removes the artificial seasonality that is caused by daily calculation of error covariances. The background noise has been reduced in the new version with a factor of 10 to a level of less than $0.02 \text{ Gg N yr}^{-1} \text{ cell}^{-1}$ and a rms (root mean square) error of $0.036 \text{ Gg N yr}^{-1} \text{ cell}^{-1}$. Us-

ing the emission update constraint instead of an OmF filter enables DECSO to use 10 % more observations and removes unrealistic emission fluctuations found in DECSO v3b. By changing the threshold value of the sensitivity matrix **H**, the errors caused by few observations on the edge of the emission plumes have been decreased.

Direct validation of emission estimates is not possible due to the lack of independent observations. The accuracy of the emission estimates depends largely on the accuracy of the NO₂ satellite observations and of the CTM used in the inversion. Any random errors in the observations or the model are described in the Kalman filter and result in an error estimate for the emissions. Biases are more difficult to quantify. A negative or positive bias in the CTM can occur due to the influence of its limited resolution on NO₂-OH chemical feedbacks, which varies over different cities and time periods due to the size of the emission source (Valin et al., 2011). Random CTM errors are included in the calculation of the representation errors described in Sect. 3.1. Any systematic biases in the CTM (for example caused by non-linear chemistry in relation to the coarse resolution) will directly affect the resulting emission estimate. In DECSO, the grid NO₂ columns simulated by the CTM are projected via a high-resolution grid onto the footprint of satellite observations, which avoids the bias caused by different resolutions of the CTM and satellite observations. The NO₂ observations can suffer from biases in scenes with high aerosol concentrations (Lin et al., 2014; Kuhlmann et al., 2015; Chimot et al., 2016) or the limited resolution of the a priori information used in the retrieval cases with high NO₂ concentration gradients (Heckel et al., 2011; Russell et al., 2011; Laughner et al., 2016). In China, however, there are few isolated emission sources with large concentration gradients. Therefore, several validation studies of the DOMINO v2 product with MAX-DOAS measurements show no significant biases in China on average (Irie et al., 2012; Wang et al., 2016). Ma et al. (2013) evaluated a gradient smoothing effect in the DOMINO v2 retrieval product in China and found no significant bias in winter and an upper limit for the bias in summer of 11–26 %. Large biases coming from, for example, the high aerosol cases are avoided by the emission update constraint explained in Sect. 3.2. However, we can roughly estimate the precision of the emission based on the year-to-year variability in the derived monthly emissions per grid cell in 2012 and 2013, since there is no significant trend in these two years (van der A et al., 2017). We calculate the average difference in monthly emissions between 2012 and 2013 over all grid cells (15 609 grid cells), which is about 20 %. We verify the result by comparing the derived monthly emissions for 2012 from DECSO with a run with a different initial emission inventory and starting year. We conclude that the precision is about 20 % for each grid cell. We do the same calculations on a provincial level and find that the provincial monthly emissions have much better precision of less than 2 %.

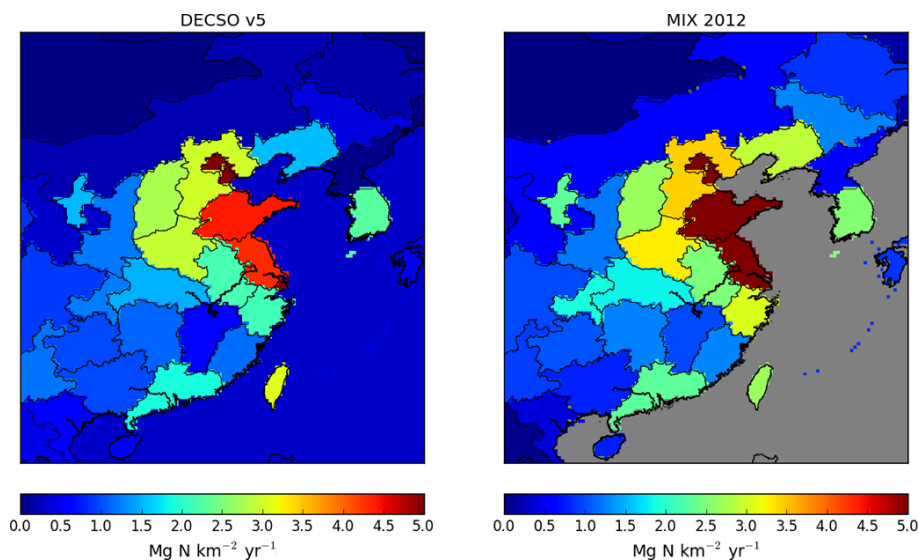


Figure 10. Annual emissions on a provincial level derived with DECSO v5 and from the MIX (2012) inventory, used for China and outside China respectively. Emissions over sea are not included in the MIX inventory.

With all improvements implemented in DECSO v5, it shows good agreement with the MIX inventory in the spatial distribution. Figure 10 shows an overview of NO_x emission flux of each province from DECSO v5 and MIX in 2012. In some rural provinces (e.g. Guangxi, Yunan), NO_x emissions of DECSO are about 30 % higher than MIX. This is probably due to biogenic emissions that are not included in MIX. The NO_x emissions in Guangxi are much higher than MIX in summer. NO_x emissions of DECSO v5 are on average 30 % lower than MIX and go up to 80 % lower in most of the northern provinces of China. One possible reason for the low emissions in northern China is the underestimation of NO₂ tropospheric columns of DOMINO v2 specifically for that area of the world. We find a significantly high number of negative retrievals over this area in the winter months, which indicates a negative bias in the retrievals. This is partly due to a bias in the high air mass factor for retrievals at large solar zenith angles, introduced by the multiple scattering in the radiance transfer model used in the calculation of the air mass factor in DOMINO (Lorente et al., 2016). Another reason for the underestimation of emissions can be the uncertainties of NO_x sinks in the CTM used by DECSO for high latitudes. Stavrou et al. (2013) showed that their NO_x emission results are about 20 to 50 % lower than MIX and they demonstrated the strong influence of NO_x loss uncertainties on top-down emission estimates. Mijling et al. (2013) discussed that the total anthropogenic NO_x emissions in eastern China from different inventories have a large range, which can be as large as 40 %. Except for the three northernmost provinces, the difference between DECSO v5 and MIX is within this range.

The relatively high *R* of 0.6 of seasonal emissions in anthropogenic emission provinces between DECSO v5 and MIX shows that DECSO v5 is able to capture the seasonal-

ity of NO_x emissions. However, the seasonality is not only dominated by anthropogenic emissions; biogenic emissions such as soil and fire emissions also have a large impact on the seasonality of emissions. Tie et al. (2006) showed that the total biogenic NO emissions in China are 50 % of total anthropogenic emissions and mostly from agricultural soils and synchronized with large populations and human activity. Meanwhile agricultural fire emissions from crop burning after harvest activity are also quite high. NO_x emissions of Anhui in 2012 and 2013 derived by DECSO v5 show small peaks in different months and this may be caused by high soil and fire emissions in those months.

By reducing the background noise in DECSO, we see more clear ship tracks near the Chinese coastal areas, consistent with the ship locations. DECSO v5 reveals two shipping lanes in the Taiwan Strait: the territorial water shipping and the long distance shipping lane. The magnitude of the shipping emissions of the long distance shipping lane derived by DECSO v5 is comparable with other studies on shipping emissions derived from satellite observations in other areas of the world with similar ship density. The emissions in territorial water closer to the coast are much higher, which is also shown by Fan et al. (2016). Shipping emissions from DECSO v5 can be further studied for seasonality and yearly trends and also for other parts of the seas near China.

In summary, DECSO v5 derives the total NO_x emissions over East Asia with a very low background noise and reduces the artificial seasonal cycle over low emission regions compared to the previous versions. The seasonality of total emissions in DECSO v5 is more realistic and it gives comprehensive information of emissions in East Asia. The emissions and their seasonality over remote areas like seas, deserts and grasslands are as easily derived as emissions over populated

areas and can be updated on a regular basis. Combining the sector information of bottom-up inventories with the emissions calculated by DECSO, more accurate and timely inventories can be provided for the modelling community.

6 Data availability

The OMI NO₂ column data used in this study are publicly available at http://www.temis.nl/airpollution/no2col/omi_data_v2.php (Boersma et al., 2011).

Competing interests. The authors declare that they have no conflict of interest.

Acknowledgements. The research was part of the GlobEmission project funded and supported by the European Space Agency. We acknowledge Tsinghua University for providing the MIX emission inventory. We acknowledge IPSL/LMD, INERIS and IPSL/LISA in France for providing the CHIMERE model. We acknowledge the use of tropospheric NO₂ column data of DOMINO version 2 obtained from www.temis.nl.

Edited by: S. Beirle

Reviewed by: M. Wenig and one anonymous referee

References

- Beirle, S., Platt, U., von Glasow, R., Wenig, M., and Wagner, T.: Estimate of nitrogen oxide emissions from shipping by satellite remote sensing, *Geophys. Res. Lett.*, 31, L18102, doi:10.1029/2004GL020312, 2004.
- Boersma, K. F., Eskes, H. J., Dirksen, R. J., van der A, R. J., Veefkind, J. P., Stammes, P., Huijnen, V., Kleipool, Q. L., Sneep, M., Claas, J., Leitão, J., Richter, A., Zhou, Y., and Brunner, D.: An improved tropospheric NO₂ column retrieval algorithm for the Ozone Monitoring Instrument, *Atmos. Meas. Tech.*, 4, 1905–1928, doi:10.5194/amt-4-1905-2011, 2011.
- Bouwman, A. F., Boumans, L. J. M., and Batjes, N. H.: Modeling global annual N₂O and NO emissions from fertilized fields, *Global Biogeochem. Cy.*, 16, 1080, doi:10.1029/2001GB001812, 2002.
- Brunner, D., Henne, S., Keller, C. A., Reimann, S., Vollmer, M. K., O'Doherty, S., and Maione, M.: An extended Kalman-filter for regional scale inverse emission estimation, *Atmos. Chem. Phys.*, 12, 3455–3478, doi:10.5194/acp-12-3455-2012, 2012.
- Chimot, J., Vlemmix, T., Veefkind, J. P., de Haan, J. F., and Levelt, P. F.: Impact of aerosols on the OMI tropospheric NO₂ retrievals over industrialized regions: how accurate is the aerosol correction of cloud-free scenes via a simple cloud model?, *Atmos. Meas. Tech.*, 9, 359–382, doi:10.5194/amt-9-359-2016, 2016.
- Cui, F., Yan, G., Zhou, Z., Zheng, X., and Deng, J.: Annual emissions of nitrous oxide and nitric oxide from a wheat–maize cropping system on a silt loam calcareous soil in the North China Plain, *Soil Biol. Biochem.*, 48, 10–19, 2012.
- Ding, J., van der A, R. J., Mijling, B., Levelt, P. F., and Hao, N.: NO_x emission estimates during the 2014 Youth Olympic Games in Nanjing, *Atmos. Chem. Phys.*, 15, 9399–9412, doi:10.5194/acp-15-9399-2015, 2015.
- Fan, Q., Zhang, Y., Ma, W., Ma, H., Feng, J., Yu, Q., Yang, X., Ng, S. K. W., Fu, Q., and Chen, L.: Spatial and Seasonal Dynamics of Ship Emissions over the Yangtze River Delta and East China Sea and Their Potential Environmental Influence, *Environ. Sci. Technol.*, 50, 1322–1329, 2016.
- Franke, K., Richter, A., Bovensmann, H., Eyring, V., Jöckel, P., Hoor, P., and Burrows, J. P.: Ship emitted NO₂ in the Indian Ocean: comparison of model results with satellite data, *Atmos. Chem. Phys.*, 9, 7289–7301, doi:10.5194/acp-9-7289-2009, 2009.
- Ghude, S. D., Lal, D. M., Beig, G., van der A, R., and Sable, D.: Rain-Induced Soil NO_x Emission From India During the Onset of the Summer Monsoon: A Satellite Perspective, *J. Geophys. Res.-Atmos.*, 115, D16304, doi:10.1029/2009JD013367, 2010.
- Giglio, L., Randerson, J. T., and van der Werf, G. R.: Analysis of daily, monthly, and annual burned area using the fourth-generation global fire emissions database (GFED4), *J. Geophys. Res.-Biogeo.*, 118, 317–328, 2013.
- Guenther, A., Karl, T., Harley, P., Wiedinmyer, C., Palmer, P. I., and Geron, C.: Estimates of global terrestrial isoprene emissions using MEGAN (Model of Emissions of Gases and Aerosols from Nature), *Atmos. Chem. Phys.*, 6, 3181–3210, doi:10.5194/acp-6-3181-2006, 2006.
- Guenther, A. B., Jiang, X., Heald, C. L., Sakulyanontvittaya, T., Duhl, T., Emmons, L. K., and Wang, X.: The Model of Emissions of Gases and Aerosols from Nature version 2.1 (MEGAN2.1): an extended and updated framework for modeling biogenic emissions, *Geosci. Model Dev.*, 5, 1471–1492, doi:10.5194/gmd-5-1471-2012, 2012.
- He, M., Zheng, J., Yin, S., and Zhang, Y.: Trends, temporal and spatial characteristics, and uncertainties in biomass burning emissions in the Pearl River Delta, China, *Atmos. Environ.*, 45, 4051–4059, 2011.
- Heckel, A., Kim, S.-W., Frost, G. J., Richter, A., Trainer, M., and Burrows, J. P.: Influence of low spatial resolution a priori data on tropospheric NO₂ satellite retrievals, *Atmos. Meas. Tech.*, 4, 1805–1820, doi:10.5194/amt-4-1805-2011, 2011.
- Huang, X., Li, M., Li, J., and Song, Y.: A high-resolution emission inventory of crop burning in fields in China based on MODIS Thermal Anomalies/Fire products, *Atmos. Environ.*, 50, 9–15, 2012.
- Huijnen, V., Williams, J., van Weele, M., van Noije, T., Krol, M., Dentener, F., Segers, A., Houweling, S., Peters, W., de Laat, J., Boersma, F., Bergamaschi, P., van Velthoven, P., Le Sager, P., Eskes, H., Alkemade, F., Scheele, R., Nédélec, P., and Pätz, H.-W.: The global chemistry transport model TM5: description and evaluation of the tropospheric chemistry version 3.0, *Geosci. Model Dev.*, 3, 445–473, doi:10.5194/gmd-3-445-2010, 2010.
- IPCC: Climate Change 2014: Impacts, Adaptation, and Vulnerability, Summaries, Frequently Asked Questions, and Cross-Chapter Boxes, A Contribution of Working Group II to the Fifth Assessment Report of the Intergovernmental Panel on Climate Change, edited by: Field, C. B., Barros, V. R., Dokken, D. J., Mach, K. J., Mastrandrea, M. D., Bilir, T. E., Chatterjee, M., Ebi, K. L., Estrada, Y. O., Genova, R. C., Girma, B., Kissel, E. S., Levy, A.

- N., MacCracken, S., Mastrandrea, P. R., and White, L. L.: World Meteorological Organization, Geneva, Switzerland, 2014.
- Irie, H., Boersma, K. F., Kanaya, Y., Takashima, H., Pan, X., and Wang, Z. F.: Quantitative bias estimates for tropospheric NO₂ columns retrieved from SCIAMACHY, OMI, and GOME-2 using a common standard for East Asia, *Atmos. Meas. Tech.*, 5, 2403–2411, doi:10.5194/amt-5-2403-2012, 2012.
- Jaeglé, L., Martin, R. V., Chance, K., Steinberger, L., Kurosu, T. P., Jacob, D. J., Modi, A. I., Yoboué, V., Sigha-Nkamdjou, L., and Galy-Lacaux, C.: Satellite mapping of rain-induced nitric oxide emissions from soils, *J. Geophys. Res.-Atmos.*, 109, D21310, doi:10.1029/2004JD004787, 2004.
- Jaegle, L., Steinberger, L., Martin, R. V., and Chance, K.: Global partitioning of NO_x sources using satellite observations: Relative roles of fossil fuel combustion, biomass burning and soil emissions, *Faraday Discuss.*, 130, 407–423, 2005.
- KNMI: Background information about the Row Anomaly in OMI, available at: <http://projects.knmi.nl/omi/research/product/rowanomaly-background> (last access: 7 September 2016), 2012.
- Kuhlmann, G., Lam, Y. F., Cheung, H. M., Hartl, A., Fung, J. C. H., Chan, P. W., and Wenig, M. O.: Development of a custom OMI NO₂ data product for evaluating biases in a regional chemistry transport model, *Atmos. Chem. Phys.*, 15, 5627–5644, doi:10.5194/acp-15-5627-2015, 2015.
- Kwok, R. H. F., Fung, J. C. H., Lau, A. K. H., and Fu, J. S.: Numerical study on seasonal variations of gaseous pollutants and particulate matters in Hong Kong and Pearl River Delta Region, *J. Geophys. Res.-Atmos.*, 115, D21310, doi:10.1029/2004JD004787, 2010.
- Laughner, J. L., Zare, A., and Cohen, R. C.: Effects of daily meteorology on the interpretation of space-based remote sensing of NO₂, *Atmos. Chem. Phys.*, 16, 15247–15264, doi:10.5194/acp-16-15247-2016, 2016.
- Leitão, J., Richter, A., Vrekoussis, M., Kokhanovsky, A., Zhang, Q. J., Beekmann, M., and Burrows, J. P.: On the improvement of NO₂ satellite retrievals – aerosol impact on the air mass factors, *Atmos. Meas. Tech.*, 3, 475–493, doi:10.5194/amt-3-475-2010, 2010.
- Levelt, P. F., van den Oord, G. H. J., Dobber, M. R., Malkki, A., Huib, V., de Vries, J., Stammes, P., Lundell, J. O. V., and Saari, H.: The ozone monitoring instrument, *IEEE Geosci. Remote S.*, 44, 1093–1101, 2006.
- Li, D., Wang, X., Mo, J., Sheng, G., and Fu, J.: Soil nitric oxide emissions from two subtropical humid forests in south China, *J. Geophys. Res.-Atmos.*, 112, D23302, doi:10.1029/2007JD008680, 2007.
- Li, M., Zhang, Q., Kurokawa, J.-I., Woo, J.-H., He, K., Lu, Z., Ohara, T., Song, Y., Streets, D. G., Carmichael, G. R., Cheng, Y., Hong, C., Huo, H., Jiang, X., Kang, S., Liu, F., Su, H., and Zheng, B.: MIX: a mosaic Asian anthropogenic emission inventory under the international collaboration framework of the MICS-Asia and HTAP, *Atmos. Chem. Phys.*, 17, 935–963, doi:10.5194/acp-17-935-2017, 2017.
- Lin, J.-T., Martin, R. V., Boersma, K. F., Sneep, M., Stammes, P., Spurr, R., Wang, P., Van Roozendaal, M., Clémer, K., and Irie, H.: Retrieving tropospheric nitrogen dioxide from the Ozone Monitoring Instrument: effects of aerosols, surface reflectance anisotropy, and vertical profile of nitrogen dioxide, *Atmos. Chem. Phys.*, 14, 1441–1461, doi:10.5194/acp-14-1441-2014, 2014.
- Liu, H., Fu, M., Jin, X., Shang, Y., Shindell, D., Faluvegi, G., Shindell, C., and He, K.: Health and climate impacts of ocean-going vessels in East Asia, *Nature Climate Change*, 6, 1037–1041, 2016.
- Liu, Q., Guo, Y., and Giesy, J. P.: Spatio-temporal effects of fertilization in Anhui Province, China, *Environment, Development and Sustainability*, 17, 1197–1207, 2015.
- Lorente, A., Boersma, K. F., Yu, H., Dörner, S., Hilboll, A., Richter, A., Liu, M., Lamsal, L. N., Barkley, M., De Smedt, I., Van Roozendaal, M., Wang, Y., Wagner, T., Beirle, S., Lin, J. T., Krotkov, N., Stammes, P., Wang, P., Eskes, H. J., and Krol, M.: Structural uncertainty in air mass factor calculation for NO₂ and HCHO satellite retrievals, *Atmos. Meas. Tech. Discuss.*, doi:10.5194/amt-2016-306, in review, 2016.
- Ma, J. Z., Beirle, S., Jin, J. L., Shaiganfar, R., Yan, P., and Wagner, T.: Tropospheric NO₂ vertical column densities over Beijing: results of the first three years of ground-based MAX-DOAS measurements (2008–2011) and satellite validation, *Atmos. Chem. Phys.*, 13, 1547–1567, doi:10.5194/acp-13-1547-2013, 2013.
- Martin, R. V., Jacob, D. J., Chance, K., Kurosu, T. P., Palmer, P. I., and Evans, M. J.: Global inventory of nitrogen oxide emissions constrained by space-based observations of NO₂ columns, *J. Geophys. Res.-Atmos.*, 108, 4537, doi:10.1029/2003JD003453, 2003.
- Menut, L., Bessagnet, B., Khvorostyanov, D., Beekmann, M., Blond, N., Colette, A., Coll, I., Curci, G., Foret, G., Hodzic, A., Mailler, S., Meleux, F., Monge, J.-L., Pison, I., Siour, G., Turquety, S., Valari, M., Vautard, R., and Vivanco, M. G.: CHIMERE 2013: a model for regional atmospheric composition modelling, *Geosci. Model Dev.*, 6, 981–1028, doi:10.5194/gmd-6-981-2013, 2013.
- Mijling, B. and van der A, R. J.: Using daily satellite observations to estimate emissions of short-lived air pollutants on a mesoscopic scale, *J. Geophys. Res.-Atmos.*, 117, D17302, doi:10.1029/2012JD017817, 2012.
- Mijling, B., van der A, R. J., and Zhang, Q.: Regional nitrogen oxides emission trends in East Asia observed from space, *Atmos. Chem. Phys.*, 13, 12003–12012, doi:10.5194/acp-13-12003-2013, 2013.
- Miyazaki, K., Eskes, H. J., and Sudo, K.: Global NO_x emission estimates derived from an assimilation of OMI tropospheric NO₂ columns, *Atmos. Chem. Phys.*, 12, 2263–2288, doi:10.5194/acp-12-2263-2012, 2012.
- Napelenok, S. L., Pinder, R. W., Gilliland, A. B., and Martin, R. V.: A method for evaluating spatially-resolved NO_x emissions using Kalman filter inversion, direct sensitivities, and space-based NO₂ observations, *Atmos. Chem. Phys.*, 8, 5603–5614, doi:10.5194/acp-8-5603-2008, 2008.
- Richter, A., Eyring, V., Burrows, J. P., Bovensmann, H., Lauer, A., Sierk, B., and Crutzen, P. J.: Satellite measurements of NO₂ from international shipping emissions, *Geophys. Res. Lett.*, 31, L23110, doi:10.1029/2004GL020822, 2004.
- Russell, A. R., Perring, A. E., Valin, L. C., Bucsela, E. J., Browne, E. C., Wooldridge, P. J., and Cohen, R. C.: A high spatial resolution retrieval of NO₂ column densities from OMI: method and evaluation, *Atmos. Chem. Phys.*, 11, 8543–8554, doi:10.5194/acp-11-8543-2011, 2011.

- Schultz, M. G., Heil, A., Hoelzemann, J. J., Spessa, A., Thonicke, K., Goldammer, J. G., Held, A. C., Pereira, J. M. C., and van het Bolscher, M.: Global wildland fire emissions from 1960 to 2000, *Global Biogeochem. Cy.*, 22, GB2002, doi:10.1029/2007GB003031, 2008.
- Shindell, D. T., Faluvegi, G., Koch, D. M., Schmidt, G. A., Unger, N., and Bauer, S. E.: Improved Attribution of Climate Forcing to Emissions, *Science*, 326, 716–718, 2009.
- Stavrakou, T., Müller, J. F., Boersma, K. F., De Smedt, I., and van der A, R. J.: Assessing the distribution and growth rates of NO_x emission sources by inverting a 10-year record of NO₂ satellite columns, *Geophys. Res. Lett.*, 35, L10801, doi:10.1029/2008GL033521, 2008.
- Stavrakou, T., Müller, J.-F., Boersma, K. F., van der A, R. J., Kurokawa, J., Ohara, T., and Zhang, Q.: Key chemical NO_x sink uncertainties and how they influence top-down emissions of nitrogen oxides, *Atmos. Chem. Phys.*, 13, 9057–9082, doi:10.5194/acp-13-9057-2013, 2013.
- Stavrakou, T., Müller, J. F., Bauwens, M., De Smedt, I., Lerot, C., Van Roozendael, M., Coheur, P. F., Clerbaux, C., Boersma, K. F., van der A, R., and Song, Y.: Substantial Underestimation of Post-Harvest Burning Emissions in the North China Plain Revealed by Multi-Species Space Observations, *Scientific Reports*, 6, 32307, 2016.
- Streets, D. G., Canty, T., Carmichael, G. R., de Foy, B., Dickerson, R. R., Duncan, B. N., Edwards, D. P., Haynes, J. A., Henze, D. K., Houyoux, M. R., Jacob, D. J., Krotkov, N. A., Lamsal, L. N., Liu, Y., Lu, Z., Martin, R. V., Pfister, G. G., Pinder, R. W., Salawitch, R. J., and Wecht, K. J.: Emissions estimation from satellite retrievals: A review of current capability, *Atmos. Environ.*, 77, 1011–1042, 2013.
- Tang, W., Cohan, D. S., Lamsal, L. N., Xiao, X., and Zhou, W.: Inverse modeling of Texas NO_x emissions using space-based and ground-based NO₂ observations, *Atmos. Chem. Phys.*, 13, 11005–11018, doi:10.5194/acp-13-11005-2013, 2013.
- Tie, X., Li, G., Ying, Z., Guenther, A., and Madronich, S.: Biogenic emissions of isoprenoids and NO in China and comparison to anthropogenic emissions, *Sci. Total Environ.*, 371, 238–251, 2006.
- Valin, L. C., Russell, A. R., Hudman, R. C., and Cohen, R. C.: Effects of model resolution on the interpretation of satellite NO₂ observations, *Atmos. Chem. Phys.*, 11, 11647–11655, doi:10.5194/acp-11-11647-2011, 2011.
- van der A, R. J., Mijling, B., Ding, J., Koukouli, M. E., Liu, F., Li, Q., Mao, H., and Theys, N.: Cleaning up the air: effectiveness of air quality policy for SO₂ and NO_x emissions in China, *Atmos. Chem. Phys.*, 17, 1775–1789, doi:10.5194/acp-17-1775-2017, 2017.
- van der Werf, G. R., Randerson, J. T., Giglio, L., Collatz, G. J., Kasibhatla, P. S., and Arellano Jr., A. F.: Interannual variability in global biomass burning emissions from 1997 to 2004, *Atmos. Chem. Phys.*, 6, 3423–3441, doi:10.5194/acp-6-3423-2006, 2006.
- Vinken, G. C. M., Boersma, K. F., van Donkelaar, A., and Zhang, L.: Constraints on ship NO_x emissions in Europe using GEOS-Chem and OMI satellite NO₂ observations, *Atmos. Chem. Phys.*, 14, 1353–1369, doi:10.5194/acp-14-1353-2014, 2014.
- Wang, C., Corbett, J. J., and Firestone, J.: Improving Spatial Representation of Global Ship Emissions Inventories, *Environ. Sci. Technol.*, 42, 193–199, 2008.
- Wang, Y., Beirle, S., Lampel, J., Koukouli, M., De Smedt, I., Theys, N., Li, A., Wu, D., Xie, P., Liu, C., Van Roozendael, M., and Wagner, T.: Validation of OMI, GOME-2A and GOME-2B tropospheric NO₂, SO₂ and HCHO products using MAX-DOAS observations from 2011 to 2014 in Wuxi, China, *Atmos. Chem. Phys. Discuss.*, doi:10.5194/acp-2016-735, in review, 2016.
- Westerling, A. L., Hidalgo, H. G., Cayan, D. R., and Swetnam, T. W.: Warming and Earlier Spring Increase Western US Forest Wildfire Activity, *Science*, 313, 940–943, 2006.
- Zhang, Q., Streets, D. G., Carmichael, G. R., He, K. B., Huo, H., Kannari, A., Klimont, Z., Park, I. S., Reddy, S., Fu, J. S., Chen, D., Duan, L., Lei, Y., Wang, L. T., and Yao, Z. L.: Asian emissions in 2006 for the NASA INTEX-B mission, *Atmos. Chem. Phys.*, 9, 5131–5153, doi:10.5194/acp-9-5131-2009, 2009.