

AUT

TE WĀNANGA ARONUI
O TĀMAKI MAKAU RAU

ARCHITECTURE & BUILT ENVIRONMENT

UNDERGRADUATE & POSTGRADUATE
PROGRAMME GUIDE
2024



TOP 50
WORLDWIDE
Young University

**AUCKLAND
UNIVERSITY
OF TECHNOLOGY**

Nau mai, haere mai ki AUT WELCOME TO AUT

E ngā mana, e ngā reo
E te iti, e te rahi
E ngā mātāwaka o ngā tōpito o te ao
Ngā mahuetanga iho e kawē nei i ngā
moemoeā o rātou mā
Tēnā koutou katoa

Piki mai rā, kake mai rā,
Nau mai, haere mai ki tēnei o ngā wānanga
Whakatau mai i raro i te korowai āhuru o Te Wānanga
Aronui o Tāmaki Makau Rau

Te whakatupu i te kōunga, i te mana taurite me ngā
tikanga matatika, i ngā pūkenga ako,
i ngā pūkenga whakaako me te āta rangahau hei hāpai
i ngā hāpori whānui o te motu, otirā, o te ao.

To the prestigious, the many voices
The few, the great
To those of all races and creeds
We who remain to fulfil the dreams and
aspirations of the ancestors
Greetings one and all

Climb, ascend
Embark on the journey of knowledge
Let us at AUT embrace and empower you
To strive for and achieve excellence

To foster excellence, equity and ethics in
learning, teaching, research and scholarship,
and in so doing serve our regional, national
and international communities.

Cover
Top 50 Worldwide Young University: AUT is ranked
41st in the world based on the quality of our teaching,
research, citations, international outlook and industry
income (Times Higher Education World University
Rankings 2023).

Disclaimer: Although every reasonable effort is made
to ensure accuracy, the information in this document
is provided as a general guide only for students and is
subject to change. All students enrolling at AUT should
consult its official document, the AUT Calendar, which
is available online at aut.ac.nz/calendar, to ensure that
they are aware of, and comply with, all regulations,
requirements and policies.
The information contained in this programme guide
was correct at the time of print, December 2022.

Photo credit: Image 4 on page 3 and image 7 on page 16
by Jason Mann.

Ngā ihirangi CONTENTS

About AUT

02 Why study at AUT?

04 Student life

Course information

06 Bachelor of Architecture and Future Environments

Bachelor of Construction

08 Overview

10 Construction Management

11 Quantity Surveying

Bachelor of Engineering (Honours)

12 Overview

14 Architectural Engineering

15 Construction Engineering

17 Te Tohu Paetahi mō te Hoahoa –
Bachelor of Design in Spatial Design

20 Graduate Diploma in Architecture

21 Master of Architecture (Professional)

22 Master of Construction Management

23 Master of Engineering Project Management

24 Master of Philosophy

25 Doctor of Philosophy

Applying for your programme

26 University entrance

28 Fees and scholarships

30 How to apply

32 Find out more



He aha ai e ako ki AUT? WHY STUDY AT AUT?

Scan this QR code for details about courses, where your study could lead and stories about our great graduates and students.



1 AUT's City Campus is a great environment to meet friends and collaborate on work 2 Architecture students work in our shared wānanga design studio 3 You apply your skills by working on a variety of projects (student work by spatial design student Brooklyn Maxwell) 4 Many of the buildings at the AUT City Campus have won architecture awards

New Zealand's leading modern university

AUT is proud to be one of the world's best modern universities. Times Higher Education has ranked us in the top 50 universities under 50 years of age, and among the top 1% (251-300) of universities in the world and second in New Zealand. In our architecture and built environment programmes you learn to design environments that recognise indigenous values and address Auckland's rapid population growth, as well as global issues like housing affordability, global warming and homelessness. Our programmes recognise Māori as tangata whenua, but we also consider the needs of Pacific and other communities, and many of our students go on to a global career.

Widely known for academic excellence

AUT's mission is to create great graduates, and we offer exceptional learning experiences that prepare our students to be successful wherever in the world their career may take them. Across all of our programmes, we encourage innovation and entrepreneurship, and the ability to explore new technologies, challenge routine thinking and solve problems in new ways. You can take advantage of AUT's expertise, labs, people and equipment from a number of fields relevant for architectural research, innovation and practice. As part of your degree you may even be able to include courses from a wide range of related fields, or collaborate with other students on projects or community partnerships.

An innovative teaching and learning environment

AUT's university campuses feature modern buildings that don't just win architecture awards but also offer excellent environments where students can collaborate and develop skills that help them stand out in their future careers. In the Bachelor of Architecture and Future Environments and Master of Architecture (Professional), for example, you work in our shared wānanga design studio where you'll learn through project-led discussion, drawing, debate, critique and creating things alongside other people. This collaborative approach creates a close-knit, supportive environment, and for many of our students it will be the highlight of their studies.

Research that shapes tomorrow

AUT is ranked first in New Zealand by Times Higher Education for the number of times our research is cited globally. Our research benefits all New Zealanders and addresses issues facing the environment and society. Our current research projects range from Aotearoa New Zealand to the Pacific and all around the world. Our discoveries are widely used, both in New Zealand and around the world. Our research also feeds back into the classroom, and students can contribute to and learn from these research discoveries.

Oranga Taurira

STUDENT LIFE

AUT is a modern and innovative university with endless opportunities, and a supportive culture that celebrates diversity and is committed to improving our local and global communities. Our students are at the heart of everything we do, and we're proactive in enabling them to succeed and be ready for any challenge in front of them.

Our Student Hubs – your place to get the support you need

AUT offers some of the most comprehensive student support services in New Zealand, and our Student Hub is where you can learn more about these services. Our professionally qualified staff include social workers who can look after and support our diverse student community. Our Student Hubs are available both online and across our campuses, so you can get help and support when and where you need it.

Getting you started on your uni journey

Studying at university is exciting and can be quite an adjustment. That's why AUT helps new students transition to university life by delivering a wide-ranging orientation programme at the start of each semester. We also offer activities throughout the semester to transition you into university life. AUT's app also provides up-to-date news, events, and information about AUT anytime, anywhere.

Helping you achieve your academic goals

We do everything we can to help you achieve your academic goals and set you up for a successful career. You'll have access to all the people, resources and technology you need to make the most of your learning opportunities. Our services include academic skills support through our library and their learning services, peer mentoring for help with assessments, childcare, free technology access and financial assistance, as well as tailored support for our postgraduate research students.

Supporting your wellbeing

Our students' health and wellbeing are our highest priority, and AUT is experienced in delivering support to aid students' overall wellbeing. This includes services like 24/7 security on campus; peer support from over 300 student ambassadors, navigators, peer advisors and RUOK advisors; financial assistance; medical, learning and systems access support, as well as physical and mental wellbeing support. We actively encourage students to be aware of their wellness needs – mind, body, and spirit. As an AUT student you have access to free and confidential counselling sessions, peer support and programmes to develop better self-knowledge and resilience.

Enabling opportunities for a vibrant uni experience

We want you to make the most of university life, and have fun and grow during your time with us. That's why we offer a range of spaces and initiatives for students including clubs, events, sporting opportunities and state-of-the-art recreational facilities. Our clubs are student-led and cover social, sustainability, cultural and academic interests. If you can't find something you enjoy, you're always welcome to create something new!

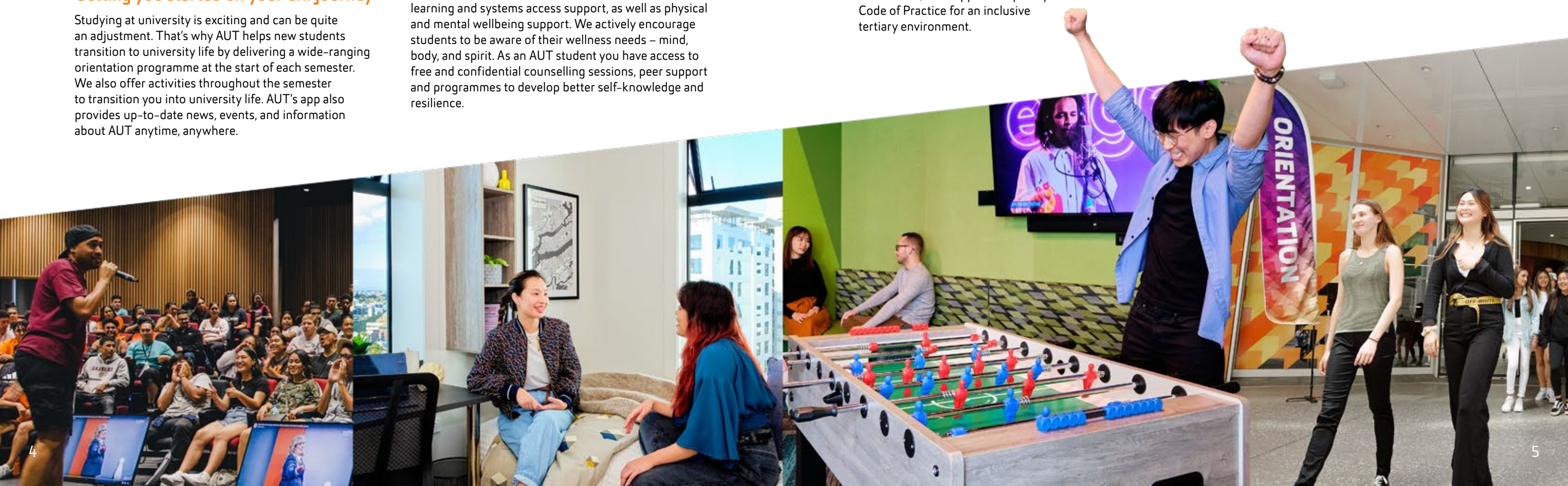
Celebrating our people

We celebrate diversity and our commitment to Te Tiriti o Waitangi with passion, curiosity and pride. We have a strong commitment to Māori and Pacific community advancement, and have dedicated teams to support all students at AUT. We were the first university in New Zealand to achieve the Rainbow Tick. We're committed to equity of access and opportunity for students, staff and visitors, and support the principles of Kia Ōrite: Code of Practice for an inclusive tertiary environment.

Our dedicated teams include disability services, and rainbow and international student support. Our Student Association (AUTSA) advocates and represents the interests of all AUT students, and shares students' voices through its Debate magazine.

Beyond learning and into employability

Our services, competitions and awards offer you enriching life experiences that will support your career once you graduate. These opportunities can help you gain an edge in the marketplace through workplace experience, international exchanges, industry connections, and CV and interview preparation for when you're ready to start your career. Our CO.STARTERS@AUT programme, X Challenge competition or AUT Ventures Ltd are also a great incubator for your entrepreneurial ideas and can help you bring your ideas to market.



Bachelor of Architecture and Future Environments

Overview

BAFE | AK1337



Scan this QR code for details about courses, where your study could lead, and stories about our great graduates and students.

QUICK FACTS

Level	7
Points	360
Duration	3 years full-time
Campus	City
Starts	26 Feb 2024

Career opportunities

To become a registered architect, you need a three-year bachelor's degree, a two-year Master of Architecture (Professional) and two years (3,300 hours) of professional practice under the supervision of a registered practising architect. Once you complete this degree you can apply for entry into the Master of Architecture (Professional)¹.

You could also go into a range of other creative and design-based industries, related professions, public service organisations or other postgraduate studies.

1. Applicants to the MArch(Prof) programme must have completed the Bachelor of Architecture and Future Environments or equivalent with a B grade average or higher in courses at level 7, or equivalent.

Architecture can play a key role in transforming our urban, energy, transport, food and industrial systems as we move to a zero carbon Aotearoa by 2050. Study the Bachelor of Architecture and Future Environments at AUT, and learn how ecological thinking and mātauranga Māori can help you design architecture that addresses this urgent contemporary challenge. You'll develop a critical approach to architectural design, become familiar with architectural theory and contemporary architecture practice, and learn to work in relation to Te Aranga Māori design principles.

Entry requirements

Minimum entry requirements

University Entrance or equivalent. Refer to the AUT website for further information.

Useful New Zealand school subjects

Design and Visual Communication, Digital Technology, Art History, Technology, Visual Arts

The above subjects are recommended however, we assume no prior training in design/visual arts and will accept applicants who have studied any high school subjects. Prior study in mathematics or physics is not required.

English language requirements

IELTS (Academic) 6.0 overall with all bands 5.5 or higher; or equivalent

What this qualification covers

Throughout your studies, you'll be based in the studio – a great environment to share ideas, collaborate with your classmates and develop your ability to work in multi-disciplinary teams and diverse cultural settings.

YEAR 1

This year introduces you to architecture as a discipline and Te Aranga Māori design principles. Courses cover architecture methodologies, tools and skillsets, including mapping, scaling, drawing, diagramming, coding and modelling, as well as technical knowledge and material fabrication. You'll apply your skills through a series of design projects.

YEAR 2

Your second year focuses on the social context of architecture, and designing for individuals and communities in future environments. You'll build on your knowledge of Te Aranga Māori design principles, and the concept of mauri ora (a state of wellbeing or

living well) and notions of eudemonia (the good life), to explore historical and emerging conceptions of home and housing. You'll also explore wider urban, civic or work-based interactions.

YEAR 3

Explore the overlap between architectural and entrepreneurial thinking as strategies for working in uncertain contexts, and the impact of innovation, computational intelligence, emerging technologies and integrated systems on architecture. In your second semester you develop a proposal for a building of medium to large scale and complexity.

Minors and electives

As part of your degree, you can study a minor or elective courses. A minor usually consists of four courses, and you choose an area of interest from a wide range of subjects. Visit aut.ac.nz/majors-minors for a list of minors you can choose from.

	YEAR 1	YEAR 2	YEAR 3
SEMESTER 1	Wānanga Design Studio I: Whakapapa/Relationships 30 PTS	Wānanga Design Studio III: Mauri Ora I 30 PTS	Wānanga Design Studio V: Innovation 30 PTS
	Architectural Intelligence I: Anthropocene 15 PTS	Architectural Intelligence II: The Pacific City 15 PTS	Architectural Intelligence III: Innovation in Practice 15 PTS
	Architectural Communication 15 PTS	Architectural Ecologies II: Medium-Scale Construction 15 PTS	Architectural Ecologies III: Environmental Performance 15 PTS
SEMESTER 2	Wānanga Design Studio II: Materials & Making 30 PTS	Wānanga Design Studio IV: Mauri Ora II 30 PTS	Wānanga Design Studio VI: Building Complex 30 PTS
	Architectural Ecologies I: Material Assemblies 15 PTS	Elective course 15 PTS	Architectural Ecologies IV: Integrated Systems 15 PTS
	Elective course 15 PTS	Elective course 15 PTS	Elective course 15 PTS

Core courses PTS: Points

The structure for this programme is likely to change in 2024. For the latest information visit our website. Simply scan the QR code at the top of this page.



"After finishing my degree, I'd love to look into housing developments around Northland and Auckland to provide research and understanding of the possible developments and opportunities for communities. The Bachelor of Architecture and Future Environments is heaps of fun, and super focused on providing education to students in both theory and workshop methods. Not only do you work individually but you're also given the opportunity to work with others, which is a positive aspect to learning. The tutors and lecturers are always encouraging and very open to students bringing their own flair and applying it to their work. The other students have been nothing but encouraging and always find a way to make you feel good about your work."

Terina Hauraki
Ngāpuhi, Ngāti Wai
2nd-year student, Bachelor of Architecture and Future Environments

Bachelor of Construction

Overview

BConst | AK1220

QUICK FACTS

Level	7
Points	360
Duration	3 years full-time, part-time available
Campus	City
Starts	26 Feb & 15 July 2024

Want a career as a construction manager or a quantity surveyor? The Bachelor of Construction aims to equip you with robust and industry relevant skills for careers as either construction managers or as quantity surveyors in the local and global construction industry. Both roles are vital for the construction industry. The degree emphasises the capabilities required by the construction sector, and graduates will be well prepared for future roles in the construction industry.

Entry requirements

Minimum entry requirements

University Entrance or equivalent

Useful New Zealand school subjects

Maths (with stats or calculus), Science, Business and Management, Digital Technologies, Economics, Legal Studies, Design and Visual Communication

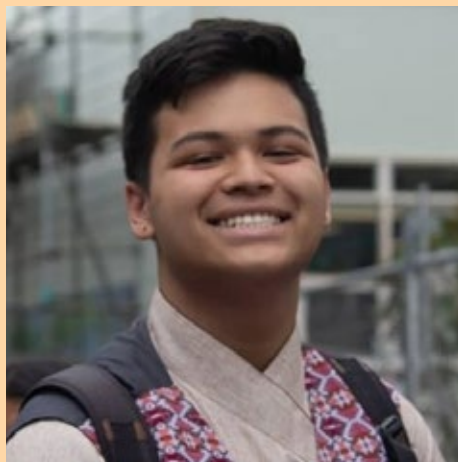
English language requirements

IELTS (Academic) 6.0 overall with all bands 5.5 or higher; or equivalent

Majors

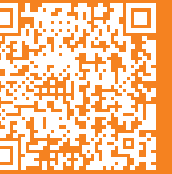
- Construction Management
- Quantity Surveying

Your major is the subject area you want to specialise in. Refer to pages 10 and 11 for more info about these majors.



"My dad is currently in the same field and I've been interested in his line of work for years. After graduation, I'd appreciate being involved in construction management, working alongside a project manager and building my way up to having enough experience to be able to manage my own potential projects. I came to AUT because it was the best-rated university providing this degree in Auckland. I had attended the AUT open day, and liked the AUT lecturers and the overall sense of community I had experienced at that event. This degree focuses less on test-like situations, reports and assignments. This gives me the opportunity to work to the best of my abilities. The lecturers are also all very enjoyable, and the entire experience has been very uplifting."

Ryan Shrestha
1st-year student, Bachelor of Construction in Construction Management



Scan this QR code for details about courses, where your study could lead, and stories about our great graduates and students.

What this qualification covers

You develop a broad range of skills related to construction projects and a career in the construction industry. In addition to your core courses, major courses and minor courses, you also need to complete a minimum of 600 hours of planned supervised work experience to graduate.

YEAR 1

In your first year, you'll study core courses that give you a solid foundation for the Bachelor of Construction, covering topics like construction materials and technologies, planning methods and tools for construction projects, and legal issues relevant to the construction sector. You'll also take two courses from your chosen major and the first course from your Professional Practice minor.

YEAR 2 & 3

You become more specialised in your chosen major, and take more advanced courses related to construction processes and techniques. You'll also start taking courses from your chosen second minor. In your third and final year, you'll also collaborate with your classmate on a construction project where you can experience the interactions between design and construction, and the different professional roles involved in construction projects.

Minors and electives

A minor is a smaller subject you study as part of your degree. It usually consists of four courses. In the Bachelor of Construction, you study a compulsory minor in Professional Practice, which gives you a better understanding of the role of a construction manager and quantity surveyor. You also choose a second minor from an area of your interest. Visit aut.ac.nz/majors-minors for a list of minors you can choose from.



Core courses PTS: Points This chart is for guidance only. There could be some variation depending on which major you choose.

Bachelor of Construction Construction Management

Scan this QR code for details about courses, where your study could lead, and stories about our great graduates and students.



With the Construction Management major in the Bachelor of Construction you can prepare yourself for a career as a construction manager. This major focuses on operational and site management in the construction industry, alongside particular skills around off-site construction and prefabrication. As a graduate of this major you'll be well-prepared for a future career in the construction sector.

What this major covers

YEAR 1

Courses this year provide the foundation knowledge required for the Bachelor of Construction. You'll also study two courses from your major, and one course from your Professional Practice minor. Courses this year cover construction technology, materials, design, organisation, practice and implementation.

YEAR 2

You become more specialised by studying three core courses alongside your major courses, as well as two courses from your Professional Practice minor. Areas studied include construction engineering management, human factors, safety and innovation.

YEAR 3

In your third and final year you complete a final core course alongside your major courses, and a 30-point project in two parts. You also complete the final course from your Professional Practice minor. Areas studied include construction planning, integration, and leadership and people management.

Career opportunities

Construction managers have a vital role in the construction industry. These professionals combine the technical understanding of how construction takes place (in all forms; infrastructure, commercial and residential projects) with the commercial realities of the construction industry.

They bring together the necessary understanding of large, complex construction projects, and the ability to work with a wide range of people with diverse skillsets and backgrounds.

Bachelor of Construction Quantity Surveying

Scan this QR code for details about courses, where your study could lead, and stories about our great graduates and students.



The Quantity Surveying major in the Bachelor of Construction prepares you for this essential construction industry career. This major has a focus on contract management, costing and commercial management in the construction industry. Once you graduate with a Bachelor of Construction in Quantity Surveying, you'll be equipped with the skills and knowledge for a career as a quantity surveyor.

What this major covers

YEAR 1

Courses this year provide the foundation knowledge required for the Bachelor of Construction. You'll also study two courses from your major, and one course from your Professional Practice minor. Areas studied include construction technology, materials, design, organisation, practice and implementation.

YEAR 2

You become more specialised by studying three core courses alongside your major courses, as well as two courses from your Professional Practice minor. Areas studied include construction engineering management, human factors, quantity surveying, land economy and valuation, and construction process integration.

YEAR 3

In your third and final year you complete a final core course alongside your major courses, and a 30-point project in two parts. You also complete the final course from your Professional Practice minor. Areas studied include quantity surveying practice and advanced measurement, commercial management and dispute resolution, and leadership and people management.

Career opportunities

Quantity surveyors are an essential part of the construction industry. They combine the technical understanding of how construction takes place (in all forms; infrastructure, commercial and residential projects) with the commercial realities of the construction industry. These professionals bring together the necessary understanding of large, complex construction projects, and the ability to work with a wide range of people with diverse skillsets and backgrounds.

Bachelor of Engineering (Honours) Overview

BE(Hons) | AK3751

QUICK FACTS

Level	8
Points	480
Duration	4 years full-time, part-time available
Campus	City
Starts	26 Feb & 15 July 2024

As an engineer you address the key issues we face today, like access to clean water, sustainable energy systems, waste management, recycling and environmental pressures. The Bachelor of Engineering (Honours) prepares you for a rewarding career in engineering. It's accredited by Engineering New Zealand, and prepares you for Engineering New Zealand membership. You learn to formulate models and analyse, predict and monitor engineering systems – essential skills in professional engineering. Through engineering projects and other practical courses you have plenty of opportunities to apply what you have learnt in class.

Entry requirements

Minimum entry requirements

University Entrance or equivalent, including:

- **NCEA:** At least 14 level 3 credits in each of Calculus and Physics
- **CIE:** A level Mathematics and a minimum of AS in Physics OR A level in Physics and a minimum of AS in Mathematics
- **IB:** A grade of 4 or better in Mathematics and Physics

Applicants without UE must demonstrate competency in Calculus and Physics to at least level 3 or equivalent.

Guaranteed entry

Applicants will automatically be offered a place in this programme if they have a rank score of 250 or higher, along with 14 NCEA level 3 credits in each of Calculus and Physics or CIE A levels in Mathematics and Physics. All other applicants who have met the admission requirements will be considered on a case-by-case basis.

Useful New Zealand school subjects

Chemistry, Digital Technologies, English

English language requirements

IELTS (Academic) 6.0 overall with all bands 5.5 or higher; or equivalent

Majors

- Architectural Engineering
- Construction Engineering

Your major is the subject area you want to specialise in. Refer to pages 14 and 15 for more info about these majors.

Scan this QR code for details about courses, where your study could lead, and stories about our great graduates and students.



What this qualification covers

Through engineering projects and other practical courses you have plenty of opportunities to apply what you've learnt in class.

You also need to complete 800 hours of planned, supervised work experience to graduate, in addition to completing all your courses. Our strong industry partnerships with companies like Fisher & Paykel, Beca, Opus, Spark and Contact Energy help you gain valuable workplace experience as part of your study.

YEAR 1

Students in all majors do the same courses in the first year, giving you a solid understanding of different engineering disciplines and preparing you for the more advanced courses in the next three years of your study.

YEAR 2

You'll develop an understanding of how to apply mathematical and engineering sciences across different engineering disciplines. You'll also start to specialise in your chosen major.

YEAR 3

You further develop what you've learnt in Year 2, and work on a piece of engineering design and analysis under the guidance of an academic supervisor.

YEAR 4

In your final year you complete an individual industrial project, working on a piece of engineering design and analysis for an industry organisation.

	YEAR 1	YEAR 2	YEAR 3	YEAR 4
SEMESTER 1	Introduction to Engineering Design (15 PTS)	Engineering Mathematics II (15 PTS)	Major course (15 PTS)	Major course (15 PTS)
	Electrical Principles A (15 PTS)	Major course (15 PTS)	Major course (15 PTS)	Major course OR elective course (15 PTS)
	Engineering Mathematics I (15 PTS)	Major course (15 PTS)	Major course (15 PTS)	Major course OR elective course (15 PTS)
	Mechanical Principles A (15 PTS)	Major course (15 PTS)	Major course (15 PTS)	Industrial Project (30 PTS)
SEMESTER 2	Introduction to Computing (15 PTS)	Major course (15 PTS)	Major course (15 PTS)	
	Electrical Principles B (15 PTS)	Major course (15 PTS)	Major course (15 PTS)	Major course OR elective course (15 PTS)
	Engineering Materials I (15 PTS)	Major course (15 PTS)	Major course (15 PTS)	Major course OR elective course (15 PTS)
	Mechanical Principles B (15 PTS)	Major course (15 PTS)	Major course (15 PTS)	Major course OR elective course (15 PTS)

Core courses PTS: Points This chart is for guidance only. There could be some variation depending on which major you choose.



"I want to help build better places where people can work, visit and live. I chose to study at AUT because of its kind, friendly, and diverse group of students and staff. As a student, I received so much encouragement and support. I found the classes engaging and could ask for help when I needed it. Plus, there are so many great university clubs to join. I loved doing my final-year industrial project and bringing together everything I had learnt during the degree to deliver a final group research report and presentation. I also appreciated the flexibility of the classes, which enabled me to work as an intern and gain industry experience while studying full-time. I'll always look back and remember my time at AUT fondly."

Sabrina Naseem
Graduate Civil/Structural Engineer, AECOM
Bachelor of Engineering (Honours) in Construction Engineering

Bachelor of Engineering (Honours) Architectural Engineering

Scan this QR code for details about courses, where your study could lead, and stories about our great graduates and students.



Businesses, tenants and homeowners expect more from the buildings they work and live in. They want buildings that are energy efficient and more sustainable, comfortable to live and work in, offer more services and are fit for purpose, now and in the future. Architectural engineers help make this happen.

What this major covers

Through engineering projects and other practical courses you have plenty of opportunities to apply what you've learnt in class. You need to complete 800 hours of planned supervised work experience to graduate, in addition to completing all your courses.

YEAR 1

Courses this year cover mathematics and computational techniques, as well as the communication and teamwork skills that are essential for the team environment engineers work in.

YEAR 2

You become familiar with construction materials, structural engineering, building construction, and quantity surveying. You also develop your analytical and engineering management skills.

YEAR 3

This year focuses on specialist architectural engineering courses, including geotechnical engineering, structural analysis, architectural design and development, and the specifics of building subsystems, including illumination engineering and heating, ventilation and air-conditioning (HVAC) systems, and architectural design and sustainability.

YEAR 4

In your final year, you'll have a supervised programme of industrial-focused project experience, where you put into practice your understanding of management techniques, project planning and development, research application and design. You also complete courses that cover advanced analytical thinking and research experiences.

Career opportunities

- Architectural design engineer
- Building services engineering
- Project management
- Building Information Management (BIM) specialist

This is an engineering qualification. Graduates will not be architects or qualified to register as architects.



"AUT fit perfectly with my learning style – learning through collaboration, engagement with lecturers and plenty of workshops. The forward-thinking nature of the courses that delivered what the industry wanted was also a huge upside of AUT, and I began to appreciate it more as my degree went on. When I went into the job market, I was constantly hearing 'Wow, you learned that at uni?' from interviewers. They were surprised that some incredibly in-demand skills that are often overlooked by universities were captured by the AUT courses. I now work as an assistant project manager at Beca and was particularly proud when we reached the practical completion of the Southeast Asian Precinct at Auckland Zoo."

Josh Laloli
Assistant Project Manager, Beca
Bachelor of Engineering (Honours)
in Architectural Engineering

Bachelor of Engineering (Honours) Construction Engineering

Scan this QR code for details about courses, where your study could lead, and stories about our great graduates and students.



Designing safe, cost effective and environmentally sustainable buildings and infrastructure is essential to our society. Professional construction engineers are involved with the design, planning and construction of the physical infrastructure that surrounds us. AUT's construction engineering programme will help you develop skills in structural engineering, materials technologies, construction systems, construction management, productivity improvement and waste reduction strategies.

What this major covers

Through engineering projects and other practical courses you have plenty of opportunities to apply what you've learnt in class. You need to complete 800 hours of planned supervised work experience to graduate, in addition to completing all your courses.

YEAR 1

Courses this year cover mathematics and computational techniques, as well as the communication and teamwork skills that are essential for the team environment engineers work in.

YEAR 2

You become familiar with construction materials, structural engineering, building construction and quantity surveying. You also develop engineering management and analytical skills.

YEAR 3

This year focuses on specialist construction courses, including geotechnical engineering, structural analysis and construction planning. You also explore the design of concrete and steel structures.

YEAR 4

In your final year, you'll have a supervised programme of industrial focused project experience, where you put into practice your understanding of management techniques, project planning and development, research application and design. You also study courses that cover advanced analytical thinking and research experiences.

Career opportunities

- Construction design engineer
- Construction delivery systems
- Site engineer
- Project and construction management

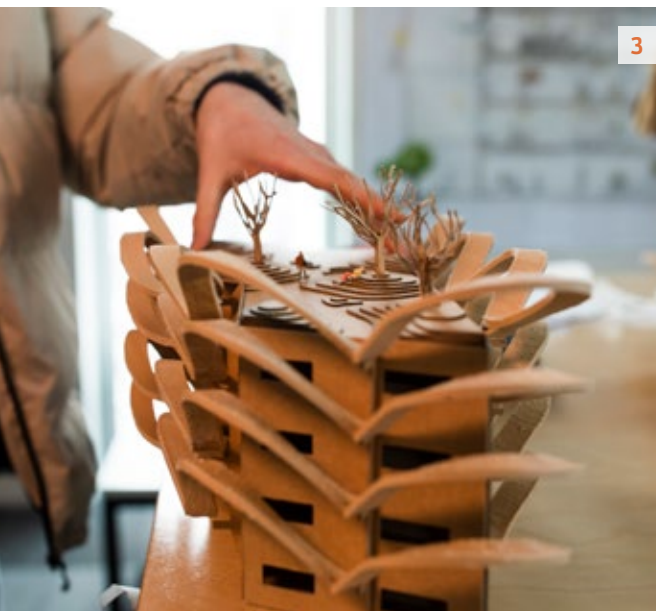


"What I enjoyed most about my study at AUT was learning and acquiring knowledge from lecturers who are not only knowledgeable on different aspects of construction engineering, but also very generous with their time. I also enjoyed studying and using the facilities at the new engineering building; the final-year project rooms are convenient and quiet, with computers that provide access to all the engineering software needed. I want to relate the knowledge and skills I've developed in New Zealand to the work I'll be doing towards the development of Kiribati's construction sector."

Annajane Leslie Schutz
Kiribati
Graduate Structural Engineer, Ministry of
Infrastructure and Sustainable Energy,
South Tarawa, Kiribati
Bachelor of Engineering (Honours)
in Construction Engineering



1 2



3

1 Architecture courses cover areas like drawing, scaling and using tools for modelling 2, 3 & 5 Learn to prepare and present building design projects of varying scales and complexity 4 'The Blue Walk' exhibited at AD21 by Parneet Judge, Spatial Design major 6 'Cinematic Scaffold' exhibited at AD21 by Debbie Chan, Spatial Design major 7 & 8 Many of the buildings at the AUT City Campus have won architecture awards

Te Tohu Paetahi mō te Hoahoa – Bachelor of Design Spatial Design

BDes | AK3619

QUICK FACTS

Level	7
Points	360
Duration	3 years full-time, part-time available
Campus	City
Starts	26 Feb 2024
Apply by	30 Sept 2023

Spatial design is the design of human environments from the inside out. At AUT, our main areas of spatial design are interior design; stage, set, and production design; furniture, urban placemaking; exhibition, event, and experience design; and imagined futures and critical speculations. Spatial design overlaps with architecture, landscape design, curating, installation art, community development, and design for virtual or augmented worlds.

Entry requirements

Minimum entry requirements

University Entrance or equivalent in approved subjects. Refer to the AUT website for further information.

Useful New Zealand school subjects

Classical Studies, Computing, Construction and Mechanical Technologies, Design (Practical Art), Design and Visual Communication, Digital Technologies or Hangarau Matihiko, English, Geography, Hangarau, Hauora, Health, History, History of Art, Mathematics/Pāngarau, Media Studies, Music Studies, Ngā Mahi a Rēhia, Ngā Toi, Ngā Toi Ataata, Ngā Toi Puoro, Painting (Practical Art), Pāngarau, Photography (Practical Art), Physics, Printmaking (Practical Art), Processing Technologies, Psychology, Pūtaiao/Science, Sculpture (Practical Art), Technology/Hangarau, Te Ao Haka, Te Reo Māori, Te Reo Rangatira, Technology, Visual Arts

English language requirements

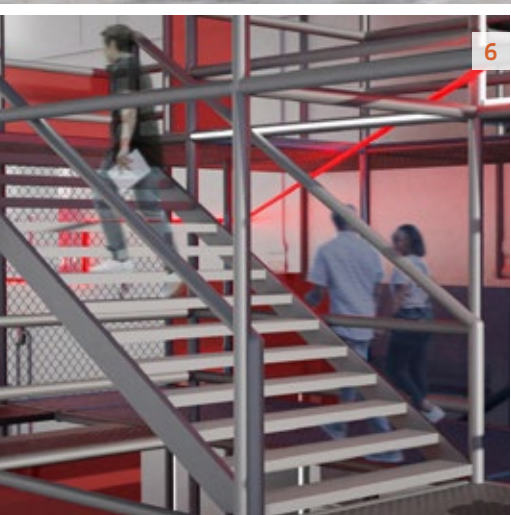
IELTS (Academic) 6.0 overall with all bands 5.5 or higher; or equivalent

Don't meet the entry requirements?

Consider starting with Titohu mō te Hoahoa – Diploma in Design.



4 5



6 7



8

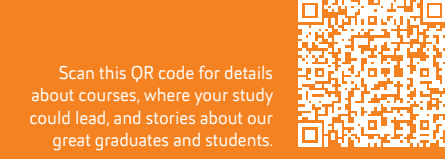


"One of the highlights for me was a final-year course where we got to propose new solutions for North Shore Hospital. We did many site visits to experience a patient's journey before designing and learned a lot about healthcare design. It was inspiring to see how something like lighting and materiality can instantly impact someone's life in a positive way. This made me deeply interested in human-centered design and environmental design. After graduation, I worked for two years as a kitchen and joinery designer, and I now work at Wingate Architects as a graduate interior designer. My job involves visualisations through 3D modelling, spatial planning, creating material boards and design detailing."

Angel Chen
Graduate Interior Designer, Wingate Architects
Bachelor of Design in Spatial Design

Te Tohu Paetahi mō te Hoahoa – Bachelor of Design

Spatial Design continued



What this qualification covers

The Te Tohu Paetahi mō te Hoahoa – Bachelor of Design is highly flexible and you can build your degree in a way that suits you and your interests.

To graduate with this degree you need to complete:

Core courses (120 points)

These are courses all students in this degree need to take. They cover fundamental design principles and processes, and help you decide which subject to focus on later in your studies. One of the core courses is the Integrated Design Practice you complete in your final semester; a great chance to gain workplace experience related to your studies.

Your chosen major (120 points)

Your major (Spatial Design) is the subject area you want to specialise in. This makes up one third of your degree.

Flexible component (120 points)

You can choose one of the following options

- Two minors (60 points each); or
- A minor (60 points) and elective courses (60 points); or
- A second major (120 points)

Your second major, minor(s) and elective courses can be from art and design or different AUT degrees.

Other majors in the Bachelor of Design include:

- Animation, Visual Effects and Game Design
- Communication Design
- Fashion Design
- Industrial Design
- Interaction Design

For more information on each of these majors, visit aut.ac.nz/artdesign

Minors

A minor is smaller than a major. It usually consists of four courses. If you decide to include a minor in your degree, you could choose from:

- Animated Drawing
- Cinematic Arts
- Contemporary Pacific
- Creative Entrepreneurship
- Design for Health
- Design for Social and Environmental Justice
- Design Thinking
- Digital Fabrication
- Experimental Surface Design
- Extended Reality
- In Print: Publishing Practices
- Motion Capture
- Photographic Practice
- Temporary Practices / Temporary Publics

For more information on each of these minors and to see even more minors you could choose from visit aut.ac.nz/majors-minors

Career opportunities

- Interior design
- Design for stage and film
- Urban placemaking
- Event and experience design
- Furniture, surface and object design

	YEAR 1	YEAR 2	YEAR 3
SEMESTER 1	Introduction to Design Practice 30 PTS	Spatial Design Practice II 30 PTS	Spatial Design Practice IV 30 PTS
	Making & Media 15 PTS	Flexible component 15 PTS	Flexible component 15 PTS
	Mahitahi Collaborative Practices 15 PTS	Flexible component 15 PTS	Flexible component 15 PTS
SEMESTER 2	Spatial Design Practice I 30 PTS	Spatial Design Practice III 30 PTS	Integrated Design Practice 60 PTS
	Flexible component 15 PTS	Flexible component 15 PTS	
	Flexible component 15 PTS	Flexible component 15 PTS	

■ Core courses ■ Core major courses PTS: Points



Build your degree on our website

Visit our website to build your own degree and see what your three years of study could look like. Simply scan the QR code above.

Possible combinations include:

- Te Tohu Paetahi mō te Hoahoa – Bachelor of Design in Spatial Design with minors in Design for Health and Sustainable Enterprise (one major, one minor)
- Te Tohu Paetahi mō te Hoahoa – Bachelor of Design in Spatial Design with a minor in Creative Entrepreneurship (one major, one minor, plus elective courses of your choice)
- Te Tohu Paetahi mō te Hoahoa – Bachelor of Design in Spatial Design and Communication Design (two majors)

Graduate Diploma in Architecture

Scan this QR code for details about courses and where this qualification could lead you.



GradDipArch | AK1347

QUICK FACTS

Level	7
Points	120
Duration	1 year full-time
Campus	City
Starts	26 Feb 2024

This programme is for students who want to gain entry into the Master of Architecture (Professional) but don't have a bachelor's degree in architecture. In just one year, you study a range of architecture courses, and prepare yourself for further study in the Master of Architecture (Professional).

Entry requirements

Minimum entry requirements

- Must have a bachelor's degree in spatial design, architectural engineering or equivalent OR
- Have a relevant professional qualification or experience approved by the dean (or representative) to be equivalent to a bachelor's degree.
- Applicants may be required to submit a portfolio of work and/or attend a selection interview.

English language requirements

IELTS (Academic) of 6.5 overall with all bands 6.0 or higher; or equivalent.

What this qualification covers

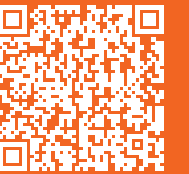
You study courses from the Bachelor of Architecture and Future Environments to prepare yourself for further study in the Master of Architecture (Professional).

Throughout your studies, you'll be based in the studio – a great environment to share ideas, collaborate with your classmates and develop your ability to work in multi-disciplinary teams and diverse cultural settings.

You'll be introduced to innovation in architecture, principles and applications of sustainable design, the design of medium and large scale buildings, and Te Aranga Māori design principles. You'll apply your skills through a series of design projects.

Master of Architecture (Professional)

Scan this QR code for course details and stories about our great graduates.



MArch(Prof) | AK1338

QUICK FACTS

Level	9
Points	240
Duration	2 years full-time, part-time available
Campus	City
Starts	26 Feb 2024

The Master of Architecture (Professional) applies emerging technologies and indigenous worldviews to re-think architecture. You'll learn to integrate social and technical knowledge into core design processes, and design a range of buildings at different scales and levels of complexity. The programme is mainly studio-based. At the heart of the programme is a design thesis, an opportunity to develop your research skills and research an area of your interest.

AUT's Master of Architecture (Professional) is accredited by the New Zealand Registered Architects Board (NZRAB).

Entry requirements

Minimum entry requirements

- Must have completed the Bachelor of Architecture and Future Environments or equivalent with a B grade average or higher in courses at level 7; or equivalent¹
- May be required to submit a portfolio of work and/or attend a selection interview

English language requirements

IELTS (Academic) of 6.5 overall with all bands 6.0 or higher; or equivalent.

What this qualification covers

You'll take advanced-level architecture courses and apply your skills through a series of design projects. Courses focus on the historical, material and social evolution of architecture; ethical, legislative, contractual and financial contexts of contemporary architectural practice; and the ways in which innovative design projects are realised.

The design project is a great chance for you to explore an area of your interest, under the supervision of our world-class academic staff.

Career opportunities

The Master of Architecture (Professional) programme has been accredited by the Australian and New Zealand Architecture Program Accreditation Procedure (ANZ APAP). Following an approved period of practical experience, graduates will be eligible to take the professional practice interview to become registered architects.

¹ Te Tohu Paetahi mō te Hoahoa – Bachelor of Design in Spatial Design or Bachelor of Engineering (Honours) in Architectural Engineering graduates may progress into the Master of Architecture (Professional) subject to an interview and completion of the Graduate Diploma in Architecture.



"While studying industrial design I worked in the construction industry over the summer breaks. This is where I saw the direct positive impact good architecture can have on people. I decided to return to AUT a year later because I had loved my time at AUT and liked the thorough architecture programme offered. The two disciplines are similar in some respects, but very different. AUT has supported me through this journey by identifying my strengths as a designer and teaching me how I can apply them to architecture. Once I complete my studies, I'd love to join a firm specialising in commercial and civic projects. Designing considered spaces for people to heal, learn, develop and thrive in is something I'm truly passionate about."

Benedict (Ben) Drayton
Graduate Diploma in Architecture student
Bachelor of Design in Industrial Design



"I had been working as an architectural technician for a number of years but decided to enrol in the Master of Architecture (Professional) to achieve my goal of becoming a registered architect. AUT's architecture programme helps to prepare you for an industry that has moved well beyond isolated workflows and requires a huge amount of collaborative work every day. I liked that the programme at AUT was new and fresh, and seemed exciting; focusing on collaboration projects and indigenous knowledge sensitivity. I most enjoyed the collaborative teamwork approach to projects – it was more authentic to a real-life modern workplace and helped me become more prepared to engage in my industry."

Todd Collis
Architectural Graduate, Chow:Hill Architects
Master of Architecture (Professional) with Honours (First Class)

Master of Construction Management

Scan this QR code for course details and stories about our great graduates.



Further your knowledge of how to manage complex construction projects. This programme has been developed in partnership with construction industry leaders to meet the demand for professional managers who are technically competent in construction and able to manage the complexity of modern construction projects. The programme is aimed at construction professionals including engineers, quantity surveyors and architects.

Entry requirements

Minimum entry requirements

One of the following with a B grade average or higher in level 7 courses:

- Relevant bachelor's degree OR
- Relevant graduate diploma OR
- Relevant professional qualification or experience approved by the Dean (or representative) to be equivalent to at least a three-year bachelor's degree AND
- Relevant engineering or managerial work experience approved by the Dean (or representative) to be equivalent to one year of advanced study

English language requirements

IELTS (Academic) of 6.5 overall with all bands 6.0 or higher; or equivalent.

What this qualification covers

You'll further your understanding of management in the construction industry, construction economics, project management, technological developments in the construction sector, and the regulatory framework within which the construction industry operates and how this impacts on effective management practice. You can also choose elective courses on topics like asset management, international construction, supply chain management, or resource efficiency. You'll also work on a project in construction management, focusing on a topic of your interest.

MCM | AK1290

QUICK FACTS

Level	9
Points	120
Duration	1 year full-time, part-time available
Campus	City or online study
Starts	26 Feb & 15 July 2024

Career opportunities

- Construction managers
- Construction and consultancy firms
- Managers/leaders of construction business units (both public and private)
- Project managers

Master of Engineering Project Management

Scan this QR code for course details and stories about our great graduates.



The Master of Engineering Project Management is the first of its kind in New Zealand. It's intended to attract a range of engineering professionals who want to advance their project management skills and further their career. This programme offers an exciting career development opportunity for practising engineering project managers aspiring to senior positions, and provides recent graduate engineers with business and project management skills for modern engineering companies.

Entry requirements

Minimum entry requirements

One of the following (or equivalent) with a B grade average or higher:

- Relevant four-year bachelor's degree OR
- Relevant bachelor's degree with honours OR
- Relevant postgraduate diploma AND
- Relevant project engineering or managerial professional experience approved by the Dean (or representative)

English language requirements

IELTS (Academic) of 6.5 overall with all bands 6.0 or higher; or equivalent.

What this qualification covers

This programme is designed to be flexible and fit in with a working professional's life. Many courses are delivered as block courses on campus, with some courses also available online.

You'll further your knowledge of advanced engineering project management, economics and finance for engineers, corporate social responsibility, resource efficiency and supply chain management.

MEPM | AK1317

QUICK FACTS

Level	9
Points	120
Duration	1 year full-time, part-time available
Campus	City or online study
Starts	26 Feb & 15 July 2024

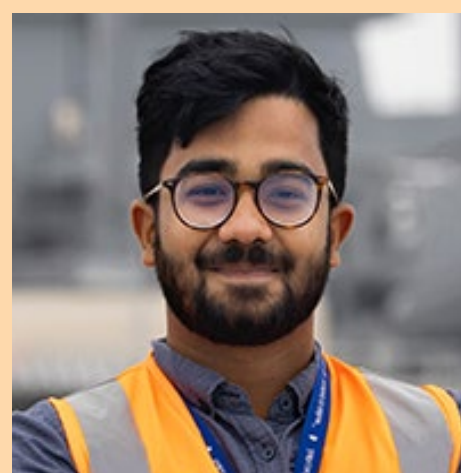
Career opportunities

- Project managers
- Engineering managers
- Engineering project managers
- Process management
- Managers/leaders of engineering business units



"I decided to enrol in AUT's Master of Construction Management as it was time for me to enhance my knowledge of the construction industry inside and outside of New Zealand. I knew this programme would enable me to work more efficiently on my future daily construction project management tasks, and feel prepared to deal with bigger scale and more complicated projects. Everyone knows that AUT is one of the best universities in New Zealand; famous for its dynamic study atmosphere. It's a relatively young university but growing very fast. In this ever-changing world, choosing a university that owns its unique, modern and innovative spirit is always the right choice."

Mengqiao (Mina) Wu
Self-employed Business Owner
Master of Construction Management



"I've enjoyed learning from the seasoned academics and professionals at AUT as it helps me to stand on the shoulders of giants. The professors I've had in my Master of Engineering Project Management have given me a solid understanding of the basics of project management as well as the tools to use them in my workplace. The structured pattern of the programme and the support of professors who have a vast amount of industry experience and are easily accessible make this programme very valuable and coveted. Since joining Babcock, I've had an awesome opportunity to further develop my skills, and have been responsible for the successful delivery of two multimillion-dollar projects."

Jerin Prasad
Project Manager (Graduate), Babcock International
Master of Engineering Project Management student
Postgraduate Certificate in Engineering

Master of Philosophy

Scan this QR code for details on the application process and to browse academic supervisors.



The Master of Philosophy (MPhil) is a one-year, research-only master's degree. It provides an opportunity for you to undertake a research topic of your interest under the supervision of architecture and built environment staff. It can also serve as a pathway to more advanced research at doctoral level.

Entry requirements

Minimum entry requirements

Must have completed one of the following with the equivalent of a B grade average or higher:

- Four-year bachelor's degree OR
- Bachelor's honours degree OR
- Bachelor's degree and postgraduate diploma OR
- Bachelor's degree and at least three years of experience relevant to the proposed research

An interview may be required for particular research areas.

English language requirements

IELTS (Academic) of 6.5 overall with all bands 6.0 or higher; or equivalent.

What this qualification covers

You complete an original research thesis during this year of your study. Our academics are available to supervise Master of Philosophy research on a wide range of topics within architecture and built environments.

MPhil | AK3720

QUICK FACTS

Level	9
Points	120
Duration	1 year full-time, 2 years part-time
Campus	City
Starts	1 Feb, 1 May, 1 Jul & 1 Oct 2024
Apply by	1 Nov (for Feb intake) 1 Feb (for May intake) 1 Apr (for Jul intake) 1 Jul (for Oct intake)

Career opportunities

As a graduate with a Master of Philosophy you have the necessary skills and qualifications to follow an academic or research career leading to a PhD. Alternatively, your research topic may lead you to a position of expertise in your chosen field.

Doctor of Philosophy

Scan this QR code for details on the application process and to browse academic supervisors.



The Doctor of Philosophy (PhD) is the university's highest qualification. The degree is undertaken by research only and leads to advanced academic and theoretical knowledge in a specialist area. You will make a significant original contribution to knowledge and understanding in your field of study and meet recognised international standards for your work. Our academic supervisors are recognised world-class researchers in their fields who have the expert knowledge to guide and advise you throughout your PhD.

Entry requirements

Minimum entry requirements

Must normally have completed the following in a discipline appropriate to the proposed research:

- Master's degree with first-class or second-class (first division) honours OR
- Bachelor's degree with honours (equivalent to four years of study), normally with first-class or second-class (first division) honours

An interview may be required for particular research areas.

The degree should include advanced learning in research, execution of a research project and a written report on the research.

English language requirements

IELTS (Academic) 6.5 overall with 7.0 in Writing and all other bands 6.0 or higher; or equivalent.

Other requirements

Acceptance is subject to the availability of staff for supervision, prior research preparation and appropriate facilities.

Planning your PhD

You need to prepare a brief proposal for your intended research, specifying the field of research you wish to investigate. Our staff supervise PhD research on a wide range of topics. Visit aut.ac.nz/architecture for current research and supervision. PhD research allowances are normally available to support PhD candidates with expenses related to data collection and analysis, conference funding, and other resources associated with completing their research. Research scholarships and graduate assistantships may also be available.

PhD | AK3518

QUICK FACTS

Level	10
Points	360
Duration	3-6 years
Campus	City
Starts	1 Feb, 1 May, 1 Jul & 1 Oct 2024
Apply by	1 Nov (for Feb intake) 1 Feb (for May intake) 1 Apr (for Jul intake) 1 Jul (for Oct intake)

Career opportunities

The PhD is suitable for students who want to pursue an academic or research career, or a senior position in the public or private sector. The opportunities to apply the knowledge and skills you gain will be extensive, both in industry and academia.

Whakauru whare wānanga

UNIVERSITY ENTRANCE

University admission to AUT bachelor's degrees

For New Zealand citizens and residents and international students studying in a high school in New Zealand

To gain admission to bachelor's degrees, you must have met the requirements for University Entrance plus any specified admission requirements for a programme, such as specific subjects, portfolios and interviews.

For more information on entry requirements, including entry requirements for international students visit aut.ac.nz/entryrequirements

Admission categories

You may be granted University Entrance under one of the following categories:

- NCEA University Entrance
- Ad Eundem Statum admission (at an equivalent level) – this includes Cambridge International Examinations (CIE) and International Baccalaureate Diploma Programme (IB)
- Discretionary Entrance
- Special Admission

Visit aut.ac.nz/entryrequirements to find out more details about these admission categories.

Common University Entrance requirements

Where programmes require a specific subject, it is expected that a student will have achieved a minimum of 14 NCEA credits in that subject (or equivalent), unless indicated otherwise. For a list of NCEA approved subjects for University Entrance visit the NZQA website, nzqa.govt.nz

	NCEA	CIE	IB ³
Overall	<p>Require NCEA level 3 certificate which consists of 80 credits, including at least 60 credits at level 3 or higher. Can include up to 20 credits at level 2. Note: Credits to achieve NCEA level 3 may include unit standards from non-approved subjects.</p> <p>Subject credits Total of 42 level 3 credits including:</p> <ul style="list-style-type: none"> • 14 credits from one approved subject • 14 credits from a second approved subject • 14 credits from a third approved subject 	<p>A minimum of 120 points on the New Zealand CAIE Tariff¹ at A or AS level from an approved list (equivalent to NCEA approved subject list). Must include at least three subjects (excluding Thinking Skills) with grades D or above.</p>	<p>IB Diploma with minimum 24 points</p>
Numeracy	<p>At least 10 level 1 (or higher) numeracy credits (can be achieved through a range of subjects)</p>	<p>A minimum grade of D in IGCSE² mathematics or any mathematics subject at AS or A level.</p>	<p>Any mathematics subject – IB Group 5</p>
Literacy	<p>Total of 10 level 2 (or higher) literacy credits including:</p> <ul style="list-style-type: none"> • 5 reading credits • 5 writing credits <p>From specific standards in a range of NZQA English language rich subjects</p>	<p>A minimum grade of E in English Language and/or English Literature subject at AS or A level.</p>	<p>Literature or language and literature (SL or HL) – IB Group 1, with English as the language</p>

1. NZ Tariff (based on old UCAS Tariff) = system which converts AS and A level grades into points.

2. IGCSE = International General Certificate of Secondary Education.

3. New Zealand residents who have taken IB but have not been awarded the Diploma may apply for discretionary entrance.

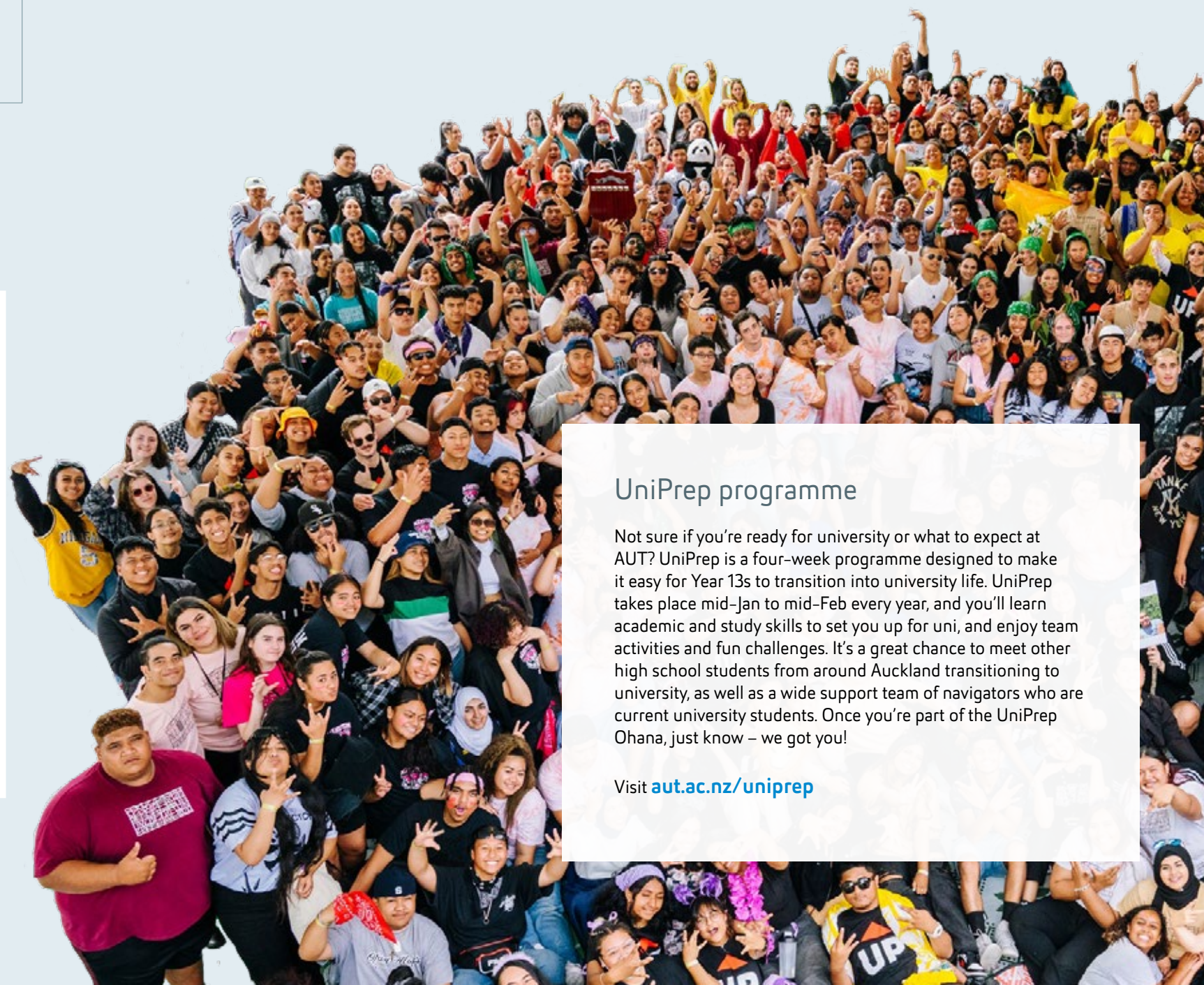
English language requirements

If you don't have English as your first language, you may have to show evidence of your English language skills. Visit aut.ac.nz/englishrequirements for details about English language testing and recognised English tests.

International students

Contact us for information regarding studying at AUT if you're not a citizen or permanent resident of New Zealand or Australia, or a citizen of the Cook Islands, Niue or Tokelau islands.

Visit aut.ac.nz/int/entryrequirements for entry requirements for specific countries. If you have any questions, you can contact us at aut.ac.nz/enquire



UniPrep programme

Not sure if you're ready for university or what to expect at AUT? UniPrep is a four-week programme designed to make it easy for Year 13s to transition into university life. UniPrep takes place mid-Jan to mid-Feb every year, and you'll learn academic and study skills to set you up for uni, and enjoy team activities and fun challenges. It's a great chance to meet other high school students from around Auckland transitioning to university, as well as a wide support team of navigators who are current university students. Once you're part of the UniPrep Ohana, just know – we got you!

Visit aut.ac.nz/uniprep

Ngā utu whakauru, ngā karahipi FEES & SCHOLARSHIPS

Cost is an important factor when thinking about university study. This page gives you an idea of the approximate tuition fees at AUT, and different options to help you fund your education including scholarships, student loans and allowances.

To give you an idea of approximate costs, the 2023 tuition fees are shown below (based on full-time study and completing 120 points per year). All fees are in NZ dollars and include GST. The 2024 tuition fees will be advertised on aut.ac.nz/fees as soon as they have been set. You may also need to pay additional fees for course materials or elective courses (check with your faculty if there are additional fees for your programme).

Domestic student tuition fees

First-time domestic students are entitled to one year of fees free.

Undergraduate programmes

Fee (per year): \$8,165–\$10,277 (for 120 points)¹
(\$7,091–\$9,203 tuition fees + \$1,074 student services levy)

Postgraduate programmes

Doctor of Philosophy
Fee (per year): \$8,348 (for 120 points)
(\$7,274 tuition fees + \$1,074 student services levy)

Master of Philosophy
Fee (per year): \$8,348 (for 120 points)¹
(\$7,274 tuition fees + \$1,074 student services levy)

Other postgraduate programmes

Fee (per year): \$10,277¹
(\$9,203 tuition fees + \$1,074 student services levy)

1. Part-time students pay a proportion of the fee based on the number of academic points they are studying.

International student tuition fees

Undergraduate programmes

Fee (per year): \$38,674–\$43,874 (for 120 points)
(\$37,600–\$42,800 tuition fees + \$1,074 student services levy)

Postgraduate programmes

Doctor of Philosophy
Fee (per year): \$8,348 (for 120 points)¹
(\$7,274 tuition fees + \$1,074 student services levy)

Master of Philosophy
Fee (per year): \$40,974 (for 120 points)
(\$39,900 tuition fees + \$1,074 student services levy)

Other postgraduate programmes

Fee (per year): \$42,674–\$45,274
(\$41,600–\$44,200 tuition fees + \$1,074 student services levy)

1. The fee shown is for candidates conducting the majority of their study within NZ. Where the majority of studies is conducted outside NZ an international tuition fee of \$41,674 will apply.

Please note that you must pay your fees in full by the date specified on your fees invoice.

To find out more about fees call **+64 9 921 9779** or **0800 AUT AUT** (0800 288 288).

Free fees for your university study¹

Eligible domestic students starting tertiary education receive one year of full-time study fees-free. To check if you're eligible for fees-free study in 2024 visit aut.ac.nz/fees

Student loans and allowances¹

If you're a full-time domestic student, you may qualify for a student loan or allowance. Student loans and allowances are administered and paid by StudyLink. The application process can take some time, so it's a good idea to apply early. You can apply for a student loan or student allowance before your enrolment at AUT is complete.

To find out more call **0800 88 99 00** or visit studylink.govt.nz

1. Domestic students only, not available to international students.

Financial assistance

We know that sometimes things happen and financial stress can impact your academic success. That's why we offer financial support that ranges from offering grocery or fuel vouchers, to helping with that unexpected bill.

StudyLink

Visit studylink.govt.nz for tools, tips and information to help you plan and understand the costs you will have while studying.

Scholarships and awards

Scholarships and awards are a great way to fund your university study. There is a wide range of scholarships and awards available to AUT students at all stages of their study including the Welcome to Auckland scholarship and Find Your Greatness scholarship (details below).

Visit the scholarships website for a full current list of scholarships offered by AUT and external funders, as well as application forms and closing dates. You can also contact AUT's Scholarships Office for advice on scholarships, awards and the scholarship application process.

2024 AUT Welcome to Auckland Scholarships

Because we recognise the challenges students may face when moving to Auckland, AUT's three-year Welcome to Auckland scholarships make a contribution towards students' accommodation and study fees. These scholarships recognise high-achieving secondary school students living outside of Auckland who intend to enrol in bachelor's degree study commencing in 2024.

2024 AUT Find Your Greatness Scholarships – School Leaver

AUT's Find Your Greatness undergraduate scholarships for school leavers reflect our commitment to creating great graduates. These three-year scholarships recognise students' academic achievement, as well as students' potential leadership ability and contribution to their school or community, cultural pursuits or sport at a representative level.

The Find Your Greatness scholarships are offered in the four categories below for study commencing in 2024:

- Academic Excellence
- All Rounder
- Hiki Ake (Lift Up)
- Kiwa (Māori and Pacific students)

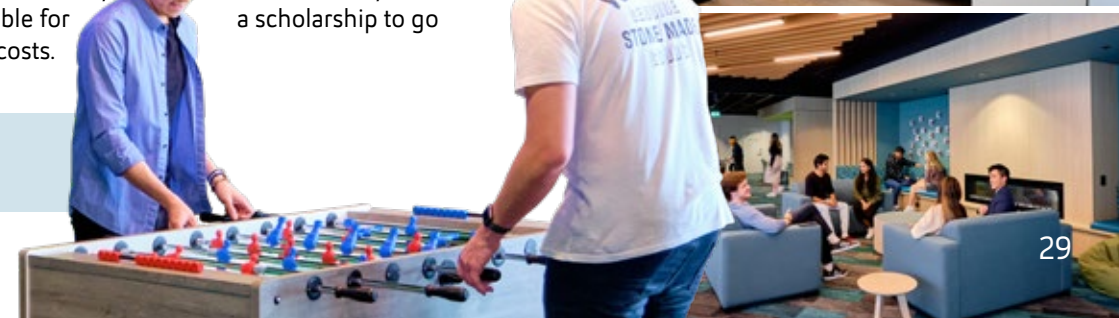
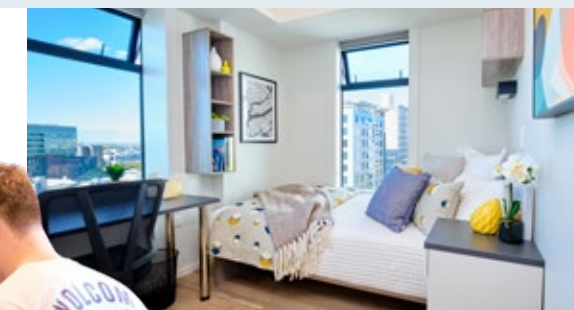
Applicants will be considered in all categories for which they are eligible.

To find out more call **+64 9 921 9837** or visit aut.ac.nz/scholarships

Accommodation

Check out our student accommodation – a comfortable and convenient option whether you're a first-year or postgraduate student, new to Auckland, or living away from home for the first time. AUT's student accommodation is modern and secure, offering a social community just a few minutes' walk away from our City or North Campus. You may even be eligible for a scholarship to go towards your accommodation costs.

Visit aut.ac.nz/accommodation



He pēhea te tono

HOW TO APPLY

Below is the step-by-step guide to the application process.
For more information visit aut.ac.nz/apply

1 APPLY EARLY

Places are limited. Submit your application well before the semester starts.

APPLYING FOR 2024

- Semester 1
– apply by 4 December 2023
- Semester 2
– apply by 6 May 2024

Applying for the Master of Philosophy (MPhil) and Doctor of Philosophy (PhD)

If you're planning to enrol in a Master of Philosophy (MPhil) or Doctor of Philosophy (PhD) at AUT, email the Graduate Research School doctoral.and.mphil.admissions@aut.ac.nz

2 COMPLETE THE APPLICATION FORM

- Apply online
- Indicate your programme(s) of choice and major (if known)

International students can also apply using an AUT approved international agent. For a list of AUT registered agents visit aut.ac.nz/international-agents

SUBMIT YOUR APPLICATION

WE ACKNOWLEDGE YOUR APPLICATION

- We will send you an acknowledgment email, which explains how to check the status of your application
- We will contact you if we need more information

WE ASSESS YOUR APPLICATION

- We assess your application to ensure you have met the entry criteria for the programme(s) you are applying for
- We consider your academic history and relevant experience to ensure you can succeed in your programme
- We let you know if your application has been successful

POSSIBLE OUTCOMES

CONFIRMED We would like to offer you a place to study at AUT

PROVISIONAL You have met some of the criteria for entry to your chosen programme of study and we would like to offer you a provisional place to study at AUT. If you don't meet the rest of the requirements, then this offer will be withdrawn

CONDITIONAL You have to meet the conditions and approvals listed in your conditional offer to be able to secure a formal offer of place

DECLINED If you don't meet the entry requirements or all places are taken, we may offer you an alternative programme

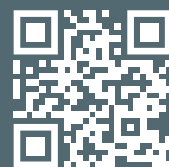
3 ACCEPT YOUR OFFER

It's important that you respond as soon as possible, particularly if you've been offered a place in a programme with limited places.

Ready to apply?
apply.aut.ac.nz

Ētahi atu kōrero
FIND OUT MORE

aut.ac.nz



Need some help?

Visit aut.ac.nz/enquire, ask us your question and we'll call you back. Or you can phone **0800 AUT AUT** (0800 288 288) to speak to one of our friendly advisors. We can help with any questions you may have, and you could also book a course counselling session or a campus tour.

Campuses

City Campus

55 Wellesley Street East, Auckland Central

North Campus

90 Akoranga Drive, Northcote, Auckland

South Campus

640 Great South Road, Manukau, Auckland

Connect with us now:



AUT LIVE

Join us at our open day, AUT LIVE, on the City Campus and see everything AUT has to offer to help you make an educated decision about university study.

aut.ac.nz/live





0800 AUT AUT (0800 288 288)

Auckland University of Technology

Auckland, New Zealand

aut.ac.nz

Enquire now

aut.ac.nz/enquire

Connect with us now:



This booklet is printed on Satin matt paper which is certified to the Forest Stewardship Council® (FSC®) standard as an FSC Mix paper from well managed forests and other responsible sources.

We print using BIO-inks that contain materials that are based on renewable resources including wood resin (rosin, colophony), and vegetable oils, linseed oil and soybean oil and the printing company is FSC certified.