

MOTORIZATION

Product Information Guide

Z-Wave Motorization Features and Size Considerations

Motorized Shades	3
Radio Frequency (RF)	3
Plus Remote Mounting Options	4
Premium Remote Mounting Options	4
Cellular Shades Motorized Lift	5
Pleated Shades Motorized Lift	6
Classic Roman Shades Motorized Lift	7
Natural Shades Motorized Lift	8
Tailored Roman Shades Motorized Lift	9
Layered Shades Motorized Lift	10
Light Gap	10
Sheer Shades Motorized Lift	11
Light Gap	11
Roller and Solar Shades Motorized Lift	12
Mounting Depth Illustrations	13
Maximum Shade Size: Dual Shades	14-15
Maximum Shade Size: 12-Volt Motorized Lift	16-19
12-Volt Power Considerations	20
12-Volt Power Components	21

Z-Wave Motorization Options

Radio Frequency (RF) Controls	22-23
Motorized Shades	24
Radio Frequency (RF)	24

EasyView Motorization Features and Size Considerations

Motorization	25
Cellular Shades Motorized Lift	26
Pleated Shades Motorized Lift	27
Roller and Solar Shades Motorized Lift	28
Mounting Depth Illustrations	29
Maximum Shade Size: 12-Volt Motor	30-31
12-Volt Power Components	31
Low Voltage 12-Volt Power Components	31
Radio Frequency (RF) Controls	31



JULY 2021

EasyView Motorization Options

12-Volt Power Components	32
------------------------------------	----

Motorized Wand Lift Features

Motorized Wand Lift	33
-------------------------------	----

Motorized Wand Lift Size Considerations

Cellular Shades Motorized Wand Lift	34
Pleated Shades Motorized Wand Lift	35
Roller and Solar Shades Motorized Wand Lift	36
Mounting Depth Illustrations	37

Motorized Wand Lift Options

Roller and Solar Shades: Motorized Wand Lift Maximum Shade Size	38-40
Power Considerations	41-42
Power Components	43

Z-Wave Motorization Features

Motorized Shades

Refer to individual product information guide for specific shade options and pricing.

Z-Wave Radio Frequency (RF)

Z-Wave Motorization motorized shades feature advanced radio technology that provides reliable, effortless operation of window coverings. The Z-Wave radio technology is supported by an alliance of countless smart home products and home automation providers, making integration simple and inexpensive. Z-Wave Motorization motorized shades are quiet, simple to install and adjust, and simple to operate. These shades also feature:



Refer to individual product information guide for specific option and size information for the product being ordered.

Z-Wave Radio Frequency Features

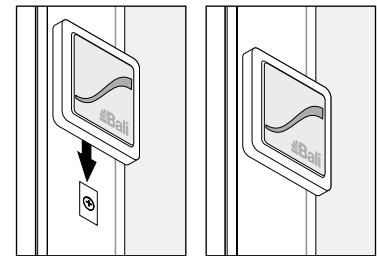
- Conveniently operated from virtually anywhere in the home, up to 65 feet
- Efficiently manages energy (heat gain and loss)
- A safer alternative to accessible cords; ideal for homes with children and pets
- Provides easy operation for hard to reach or large windows
- Easily integrate with home automation and voice control devices

Z-Wave Control & Power Features and Options

- Simple, intuitive control by means of the unique Z-Wave Standard Remote (not available with Sheer & Layered)
- Z-Wave Plus Remote (single channel) or Z-Wave Premium Remote (multiple channel) also available to control shades individually or in a group
- LED feedback on controls to simplify operation and programming
- Low voltage motorization; no costly electrical hardwiring required
- Powered with batteries or plug-in transformer
- See Z-Wave options section for additional control and power availability

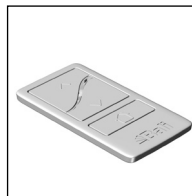
Control Options Available:

- Z-Wave standard remote
 - Simple, convenient control at the window shade location or across the room



Z-Wave Standard Remote

- Z-Wave plus remote: can be conveniently mounted or placed on a table and controlled from anywhere in the room
 - One channel
 - Create group shade control
 - Set and control an intermediate position (home)



Z-Wave Plus Remote

- Z-Wave premium remote: control can be conveniently mounted or placed on a table and controlled from anywhere in the room
 - 12 channels
 - Individual shade control
 - Create group shade control
 - Set and control an intermediate position (home)



Z-Wave Premium Remote

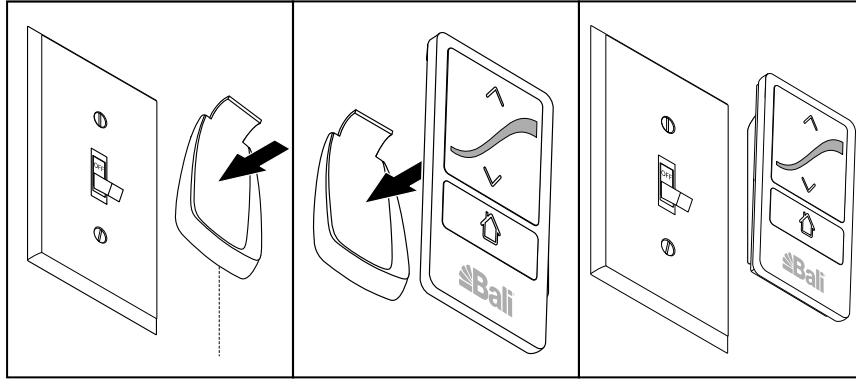
- Bali Motorization App and Gateway: convenient and easy to use app allows for mobile control of with Z-Wave shades.
 - Control individual shades
 - Create routines to control multiple shades with the ability to set timers
 - Set and control a favorite position, shade limits, and roll direction



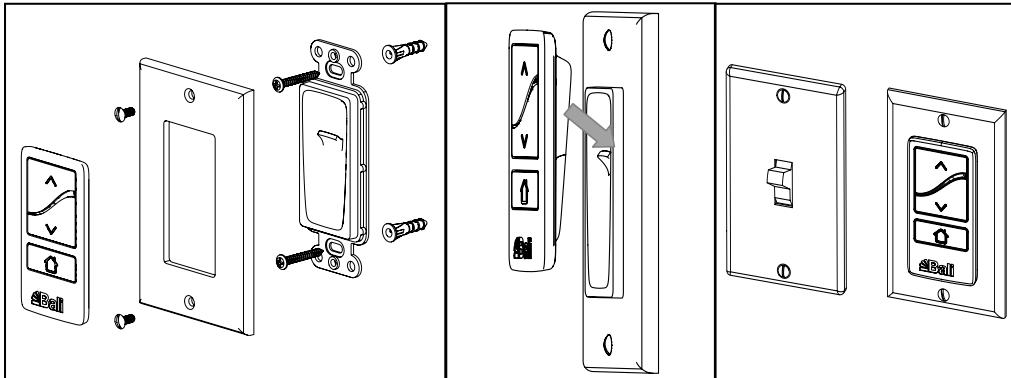
NOTE: Motorization components and accessories have a five-year limited warranty, excluding batteries.

Z-Wave Motorization Features and Size Considerations

Z-Wave Plus Remote Mounting Options

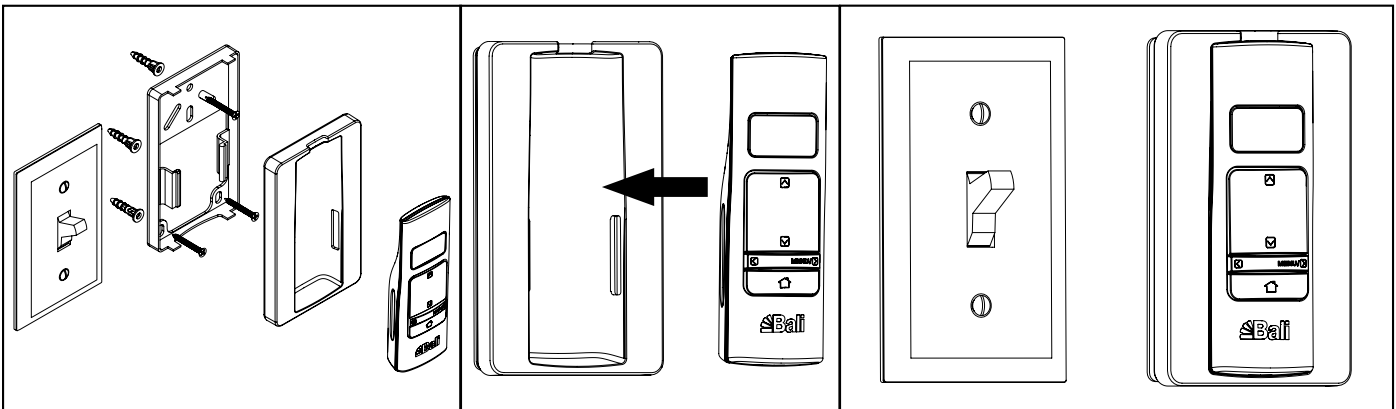


Z-Wave Plus Remote



Optional Decorator Wall Plate Mount
(see Z-Wave options for details)

Z-Wave Premium Remote Mounting Options

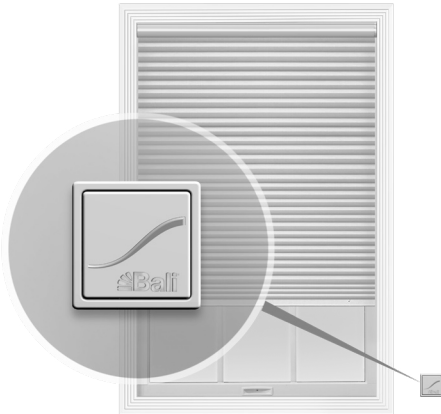


Z-Wave Premium Remote

Z-Wave Motorization Features and Size Considerations

Cellular Shades Motorized Lift

Order Entry: 12V Z-Wave Motor



Refer to individual product information guide for specific option and size information for the product being ordered.

See page 3 for benefits of using Z-Wave Motorization.

Product Specifications

- Motor located on right side within headrail
- Available as corner and bay window application
- Available with Wood Cornice and Valance
- Available with reversible fabric
- Not available with bottom up/top down, top down continuous-loop, sun up/sun down, combination shades, SkyTrack™ Skylight, specialty shapes or multiple shades on one headrail.
- Not available with hold down brackets, side mount brackets or room-darkening side channels

Control and Power Options

- Multiple control and power options available; see Z-Wave Motorization options for availability

NOTE: Motorization components and accessories have a five-year limited warranty, excluding batteries.

Z-Wave Size Considerations	Minimum Width [†] (inches)	Maximum Width (inches)	Minimum Height (inches)	Maximum Height (inches)
Cellular Shades	20	144*	9	144*

*This is the shade size maximum limit for this motor type, shades size limit may be smaller based on specific fabric type.

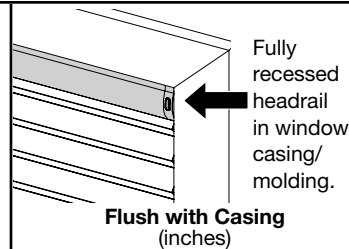
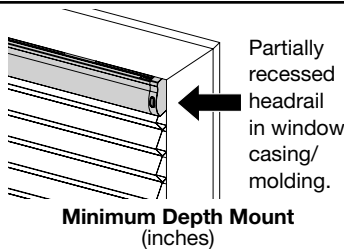
†For all inside mount applications, 3/8" deduction is taken by manufacturer on overall width.

Cellular Fabric Styles	Maximum Shade Size (square inches)
1/2" DC Hideaway	10,000
3/4" SC Hideaway, Luxe, Serenade 1/2" DC Halo, 3/8" SC Spellbound,	12,500
1 1/4" SC Halo, 3/4" SC Cosmopolitan	14,000
3/4" SC Brushstroke, Halo, Heirloom, and Impresario 3/8" SC Sunrise	17,000
All Other Fabrics	20,800*

*Shades can be manufactured at 144" x 144".

Depth Requirements for Inside Mount

Cell Size	Headrail Dimensions (inches)	Minimum Depth Mount (inches)	Flush with Casing (inches)
3/4" Single Cell 1/2" Double Cell	1 1/16" x 2 3/8"	5/8"	2 3/8"
3/8" Single Cell	1 1/16" x 2 1/8"	5/8"	2 3/8"
1 1/4" Single Cell	1 5/8" x 3 3/16"	1 3/8"	3 3/8"



Z-Wave Motorization Features and Size Considerations

Pleated Shades Motorized Lift

Order Entry: 12V Z-Wave Motor



Refer to individual product information guide for specific option and size information for the product being ordered.

See page 3 for benefits of using Z-Wave Motorization.

Product Specifications

- Motor located on right side within headrail
- Available as corner and bay window application
- Available with Wood Cornice and Valance
- Available with Dayliner or Midnight liner
- Not available with bottom up/top down, sun up/sun down, combination shades, SkyTrack™ Skylight, specialty shapes or multiple shades on one headrail.
- Not available with hold down brackets, side mount brackets or room-darkening side channels

Control and Power Options

- Multiple control and power options available; see Z-Wave Motorization options for availability

NOTE: Motorization components and accessories have a five-year limited warranty, excluding batteries.

Z-Wave Size Considerations	Minimum Width [‡] (inches)	Maximum Width (inches)	Minimum Height (inches)	Maximum Height (inches)
1" Standard Pleat	20	144* [†]	9	96*
1" Neat Pleat [®]	20	120* [†]	6	96*
2" Neat Pleat	20	144* [†]	12	120*

*This is the shade size maximum limit for this motor type, shades size limit may be smaller based on specific fabric type.

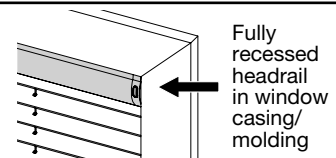
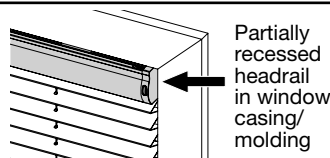
[†]Based on fabric width with overlaps.

[‡]For all inside mount applications, 3/8" deduction is taken by manufacturer on overall width.

Pleated Fabric Styles	Maximum Shade Size (square inches)
2" Dunes, Fiddlestix, Gabardine, Intuition, Rainforest, and Shoreline	10,000
1" Dunes, Gabardine, Intuition, and Shoreline 2" Reflections	12,500
1" Art Deco, Innocence, Luminance, Motif, Reflections, Taffeta, and Westport 2" Motif, Taffeta, and Westport	14,000
1" Midnight and Day liner only shades 2" Midnight and Day liner only shades	17,000

Depth Requirements for Inside Mount

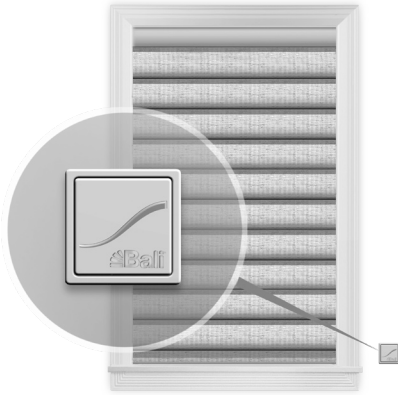
Shade Type	Headrail Dimensions (inches)	Minimum Depth Mount (inches)	Flush with Casing (inches)
1" Pleat	1 ⁷ / ₁₆ x 2 ¹ / ₈	5/8	2 ³ / ₈
2" Pleat	1 ⁷ / ₁₆ x 2 ³ / ₈	5/8	2 ³ / ₈



Z-Wave Motorization Features and Size Considerations

Classic Roman Shades Motorized Lift

Order Entry: 12V Z-Wave Motor



Refer to individual product information guide for specific option and size information for the product being ordered.

See page 3 for benefits of using Z-Wave Motorization.

Product Specifications

- Motor located on right side within headrail
- Available with both flat and looped styles
- Available as corner and bay window application
- Available with fabric valances and fabric valance trims
- Not available with bottom up/top down or multiple shades on one headrail
- Not available with hold down brackets or side mount brackets

Control and Power Options

- Multiple control and power options available; see Z-Wave Motorization options for availability

NOTE: Motorization components and accessories have a five-year limited warranty, excluding batteries.

Classic Roman Size Considerations	Minimum Width* (inches)	Maximum Width (inches)	Minimum Height (inches)	Maximum Height (inches)
Classic Roman Shades: Flat or Looped	20	76 [†]	18	96

*For all inside mount applications, 3/8" deduction is taken by manufacturer on overall width.

[†]Based on fabric width.

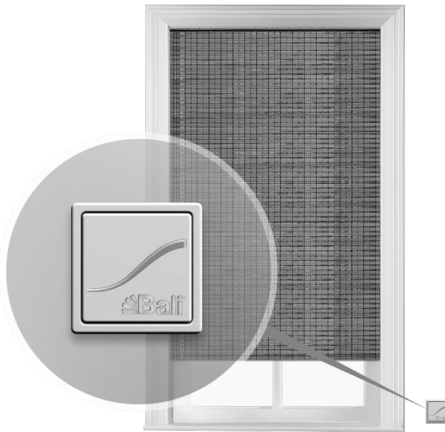
Depth Requirements for Inside Mount

Shade Style	Headrail Dimensions (inches)	Partially recessed headrail in window casing/ molding Minimum Depth Mount (inches)	Fully recessed headrail in window casing/ molding Flush with Casing (inches)
Motorized Lift: Flat	1½ x 2	½	2 ½
Motorized Lift: Looped	1½ x 2	½ (fabric loops will overhang approximately 3-in into the room)	2-½ (fabric loops will overhang approximately 3-in into the room)

Z-Wave Motorization Features and Size Considerations

Natural Shades Motorized Lift

Order Entry: 12V Z-Wave Motor



Refer to individual product information guide for specific option and size information for the product being ordered.

See page 3 for benefits of using Z-Wave Motorization.

Product Specifications

- Motor located on underside of hardwood headrail on right side
- Available with Standard and Old Style Roman
- Available with multiple shades on one headrail; each panel will have a motor and power source and there will be 1/2" gap between panels
- Available with fabric edge banding, hem options, privacy and room-darkening liners
- Available with 9" standard valance, 9" palisade valance, or 9" deco-trim valance
- Available with deco-trim hems and accent gimp
- Available as corner and bay window application
- Available with Wood Cornice and Valance
- Not available with bottom up/top down, cut outs, turned headrail or specialty shapes
- Not available with hold down brackets or side mount brackets

Control and Power Options

- Multiple control and power options available; see Z-Wave Motorization options for availability

NOTE: Motorization components and accessories have a five-year limited warranty, excluding batteries.

Natural Shades Size Considerations

Styles	Minimum Width (inches)	Maximum by Square Inches	
		Shade (square inches)	With Liner (square inches)
Antigua, Cabo, Maywood, Nicaragua, Spree, Zenon	18	2,755	2,333
Framework	18	4,493	3,466
Kayana, Gemma	18	5,194	3,878
Alondra, Avonlea, Faroe, Highpoint, Mindoro, Papua, Ridge, Rila	18	6,058	4,330
Ivan, Mill Cove, Walpole	18	6,854	4,723
Lagoon, Tarkine	18	9,149	5,712

Depth Requirements for Inside Mount

Headrail Dimensions (inches)	Minimum Depth Mount (inches)	
	Partially recessed headrail in window casing/molding	Fully recessed headrail in window casing/molding
5/8 x 2 1/4	3/4	Standard valance: 3 3/8

Z-Wave Motorization Features and Size Considerations

Tailored Roman Shades Motorized Lift

Order Entry: 12V Z-Wave Motor



Refer to individual product information guide for specific option and size information for the product being ordered.

See page 3 for benefits of using Z-Wave Motorization.

Product Specifications

- Motor located on underside of hardwood headrail on right side
- Fabric wrapped headrail for a beautifully finished look; returns are standard on outside mount shades
- Available as pleat styles: Looped, Classic Flat, Seamless, or Relaxed
- Available with Liner styles: Standard, Water Repellent, Thermal, Flannel-back
- Available finishing options: Inset banding, edge banding, decorative tape
- Not available with multiple shades on one headrail, bottom up/top down, turned headrail or blackout lining
- Not available with hold down brackets or side mount brackets

Control and Power Options

- Multiple control and power options available; see Z-Wave Motorization options for availability

NOTE: Motorization components and accessories have a five-year limited warranty, excluding batteries.

Tailored Roman Shades Size Considerations

Width		Length		
Minimum (inches)	Maximum (inches)	Minimum (inches)	Maximum (inches)	
			Classic Flat, Seamless, Relaxed	Looped
24	96	18	120	103

Motorized Lift Maximum Shade Area in Square Inches

Shade Group	12-volt Motorized Lift		
	Standard/Water Repellent Liners (square inches)	Thermal Liners (square inches)	Flannel-Back (square inches)
1	6,800	6,010	5,300
2	5,612	4,958	4,600
3	4,758	4,338	4,000
4	3,894	3,812	3,400
5	3,318	3,230	2,840

NOTE: Area is ordered width x ordered height in square inches.

EXAMPLE: 60" wide x 84" high = 5,040 square inches.

Depth Requirements for Inside Mount

Headrail Dimensions (inches)	Partially recessed headrail in window casing/molding Minimum Depth Mount (inches)	Fully recessed headrail in window casing/molding Flush with Casing (inches)
2- $\frac{1}{4}$ D x $\frac{1}{2}$ L	$\frac{3}{4}$	2 $\frac{1}{2}$

Z-Wave Motorization Features and Size Considerations

Layered Shades Motorized Lift

Order Entry: 12V Z-Wave Motor



Refer to individual product information guide for specific option and size information for the product being ordered.

See page 3 for benefits of using Z-Wave Motorization.

Product Specifications

- Motor located on right or left side; standard is on right
- Fabric wrapped cassette standard and creates a cohesive appearance in the window
- Static-guard is necessary during dry conditions to prevent static build up
- Available as corner and bay window application
- Not available with hold down brackets or side mount brackets
- Not available with Wood Cornice or Valance

Control and Power Options

- Multiple control and power options available; see Z-Wave Motorization options for availability

NOTE: Motorization components and accessories have a five-year limited warranty, excluding batteries.

Light Gap

The fabric width is narrower than the finished shade width of the tube and its components. See chart below for light gap.

Motor End		Idle End	
Inside Mount (inches)	Outside Mount (inches)	Inside Mount (inches)	Outside Mount (inches)
1 ¹ / ₁₆	1	3 ³ / ₄	1 ¹ / ₁₆

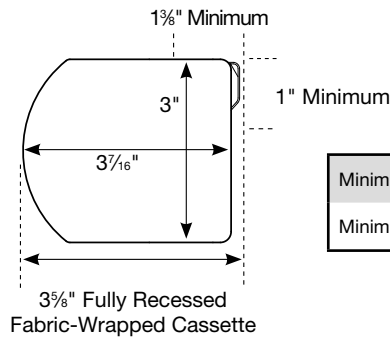
Layered Shades Size Considerations

Style Name	Maximum Width* (inches)	Maximum Height* (inches)
Aloft	98	110
Aloft Sparkle	98	110
Butterfield	95	110
Marconi	92	75
Martingale	94	77
Trimaran	97	77
Sponson	97	84

Minimum width: 16"

Minimum length: 12"

*If the height is shorter than the maximum, a slightly larger width may be available to order. Maximum width is 102".



Minimum Mounting Depth	1 ¹ / ₁₆ "
Minimum Mounting Depth, Flush Mount	3 ⁵ / ₈ "

Z-Wave Motorization Features and Size Considerations

Sheer Shades Motorized Lift

Order Entry: 12V Z-Wave Motor



Refer to individual product information guide for specific option and size information for the product being ordered.

See page 3 for benefits of using Z-Wave Motorization.

Product Specifications

- Motor located on right or left side; standard is on right
- Fabric wrapped cassette standard and creates a cohesive appearance in the window
- Available as corner and bay window application
- Not available with hold down brackets or side mount brackets
- Not available with Wood Cornice or Valance

Control and Power Options

- Multiple control and power options available; see Z-Wave Motorization options for availability

NOTE: Motorization components and accessories have a five-year limited warranty, excluding batteries.

Light Gap

The fabric width is narrower than the finished shade width of the tube and its components. See chart below for light gap.

Motor End		Idle End	
Inside Mount (inches)	Outside Mount (inches)	Inside Mount (inches)	Outside Mount (inches)
1	1 ⁵ / ₁₆	1 ¹ / ₁₆	5 ⁵ / ₈

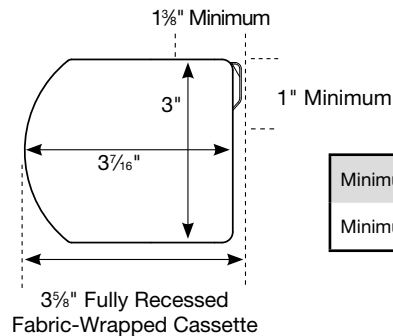
Sheer Shades Size Considerations

Style Name	Maximum Width* (inches)	Maximum Height* (inches)
Grafton 2"	96	105
Grafton Glitter 2"	98	110
Grafton Weave 2"	96	110
Grafton 3"	96	105
Grafton Glitter 3"	98	110
Grafton Weave 3"	96	110
Tisbury	94	75
Westford 2"	94	99
Westford 2 ³ / ₄ "	94	98

Minimum width: 16"

Minimum length: 12"

*If the height is shorter than the maximum, a slightly larger width may be available to order. Maximum width is 102".

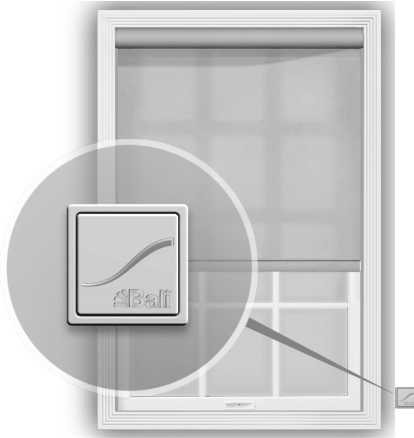


Minimum Mounting Depth	1 ³ / ₈ "
Minimum Mounting Depth, Flush Mount	3 ³ / ₈ "

Z-Wave Motorization Features and Size Considerations

Roller and Solar Shades Motorized Lift

Order Entry: 12V Z-Wave Motor



Refer to individual product information guide for specific option and size information for the product being ordered.

See page 3 for benefits of using Z-Wave Motorization.

Product Specifications

- Motor located on right or left side; standard is on right
- Available with standard or reverse roll; reverse roll not available with any valance option
- Available with valance styles: cassette, contour, fascia, wood valance and wood cornice
- Available as corner and bay window application
- Available with fabric rotated 90° (width for height)
- Available with as Dual Shade (integrates two fabrics that can be independently raised and lowered as needed); each shade requires a power source)
- Available with finishing options: scallops, gimp trim, bead trim
- Not available with hold down brackets

Control and Power Options

- Multiple control and power options available; see Z-Wave Motorization options for availability

NOTE: Motorization components and accessories have a five-year limited warranty, excluding batteries.

Inside Mount Light Gap

Valance Type	Light Gap Per Side (inches)
Contour, Fascia, No Valance	$\frac{3}{8}$ to $1\frac{1}{8}$
All Cassette Sizes	$\frac{3}{8}$ to $1\frac{1}{4}$
Dual Motorized with no Cassette	$\frac{3}{8}$ to $\frac{7}{8}$
Dual Motorized with Cassette	$\frac{3}{8}$ to 1

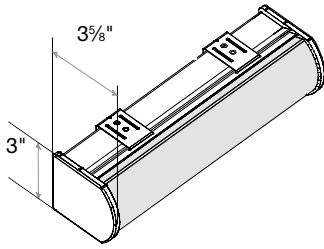
Size Considerations

Motor Type	Minimum Width (inches)	Minimum Height (inches)
12-Volt	16	13

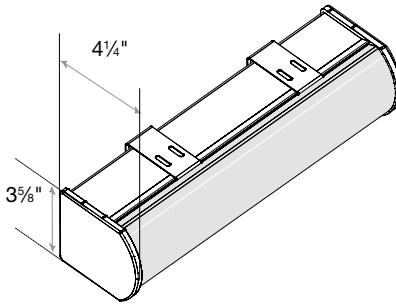
Z-Wave Motorization Size Considerations

Motorized Lift and Dual Shade: Mounting Depth Illustrations

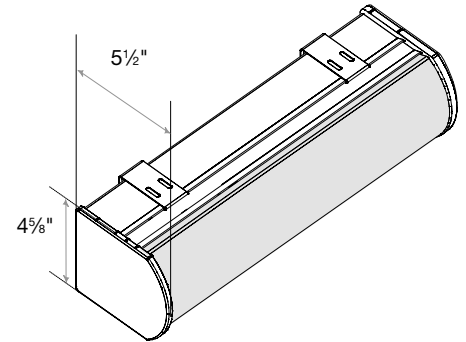
The following diagrams illustrate the mounting depth requirements for shades mounted inside window casements.



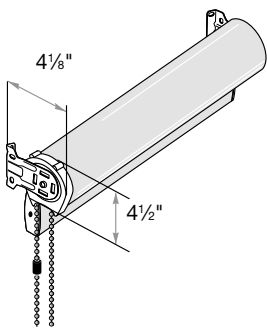
Small Cassette Valance
1 3/8" Minimum Inside Mount



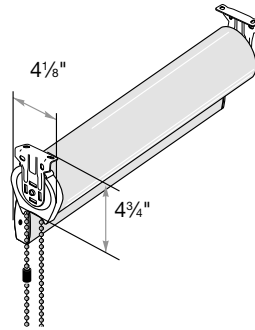
Medium Cassette Valance
1 3/4" Minimum Inside Mount



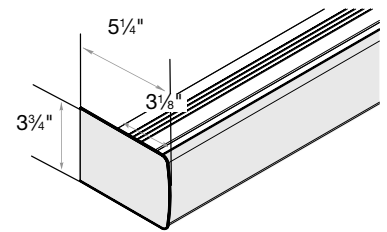
Large/Dual Cassette Valance
1 3/4" Minimum Inside Mount



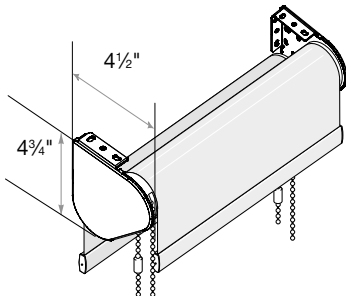
No Valance*
3/4" Minimum Inside/Side Mount



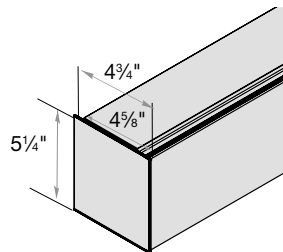
No Valance*
4 1/8" Minimum Inside/Top Mount



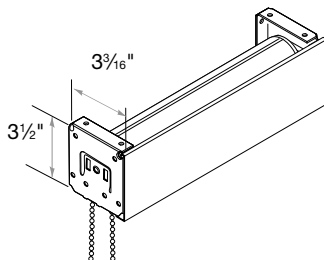
Contour Valance
2 7/16" Minimum Inside Mount
(return can be trimmed)



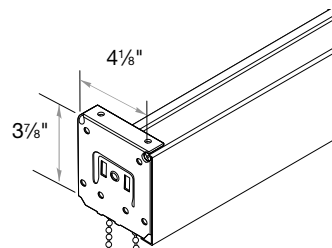
Dual Shade—No Cassette Valance
2" Minimum Inside/Top Mount
3/4" Minimum Inside/Side Mount



Flat Valance
2 15/16" Minimum Inside Mount
(return can be trimmed)



3" Fascia
2 3/4" Minimum Inside/Top Mount
3/4" Minimum Inside/Side Mount



4" Fascia
3 3/4" Minimum Inside/Top Mount
1 1/2" Minimum Inside/Side Mount

Z-Wave Motorization Features and Size Considerations

This table provides the maximum shade size available by fabric for dual shades.

Scallops will decrease the maximum height by 6¼" for roller fabrics only.

Fabric turned width for height (railroaded) may curl along its edge. This is not a defect in the product.

Only the large cassette valance is available for the dual shade. Small and medium cassette valances are not available.

Minimum Shade Size

For all fabrics: minimum shade width: 16"; minimum shade height: 13"

Maximum Shade Size: Dual Shades

Fabric Styles	Normal Orientation				Fabric Turned Width for Height (railroaded)							
	Z-Wave 12 Volt Motor No Cassette/ No Valance		Z-Wave 12 Volt Motor Large Cassette		Z-Wave 12 Volt Motor No Cassette/ No Valance at Max Length		Z-Wave 12 Volt Motor No Cassette/ No Valance at Max Width		Z-Wave 12 Volt Motor Large Cassette at Max Length		Z-Wave 12 Volt Motor Large Cassette at Max Width	
	Width (inches)	Height (inches)	Width (inches)	Height (inches)	Width (inches)	Height (inches)	Width (inches)	Height (inches)	Width (inches)	Height (inches)	Width (inches)	Height (inches)
Acadia BO	56	81	57	73	Not Available							
Acadia LF	74	89	62	99	Not Available							
Andes	91	131	92	120	Not Available							
Ballad	85	89	71	98	Not Available							
Basics	70	144	70	144	80	124	80	124	80	124	80	124
Baybridge	77	62	78	56	Not Available							
Boyden	74	82	75	74	Not Available							
Bristol	74	53	76	47	Not Available							
Candid (Flecked White)	89	115	75	119	Not Available							
Candid (Snowfall, Smokey Taupe, Speckled Black, Brown Influence)	74	115	75	105	Not Available							
Candid (Toasted Sugar)	73	111	74	104	Not Available							
Cascade	78	122	80	109	Not Available							
Collins	102	113	87	124	Not Available							
Cora	71	92	72	83	Not Available							
EcoLiving	95	119	95	119	Not Available							
EnviroStyle	94	122	94	122	Not Available							
Estevan	91	114	76	126	Not Available							
Everly	96	114	81	124	Not Available							
Feedback 1% (Americano, Antler, Mineral Point)	82	91	68	101	82	91	82	91	68	101	84	80
Feedback 1% (Fresh Fawn, Frostine, Shiny Nickel)	84	86	71	87	84	86	84	86	71	87	86	76
Feedback 1% (Farmhouse White, Coconut Milk)	83	94	70	97	83	94	83	94	70	97	85	83
Feedback 3% (Mineral Point)	83	92	71	87	83	92	83	92	71	87	85	82
Feedback 3% (Farmhouse White)	84	89	70	95	84	89	84	89	70	95	85	79
Feedback 3% (Frostine, Shiny Nickel)	84	92	70	101	84	92	84	92	70	101	86	82
Feedback 5% (Americano, Antler, Mineral Point)	83	97	85	86	83	97	83	97	85	86	85	86
Feedback 5% (Coconut Milk, Farmhouse White)	84	97	71	98	84	97	84	97	71	98	86	86
Feedback 5% (Fresh Fawn, Frostine, Shiny Nickel)	85	92	71	101	85	92	85	92	71	101	87	82
Feedback 10% (Mineral Point, Farmhouse White)	84	98	71	101	84	98	84	98	71	101	86	86
Feedback 10% (Shiny Nickel, Frostine)	85	102	71	110	85	102	85	102	71	110	87	90
Fiji BO	72	98	74	88	Not Available							
Fiji LF	95	110	79	126	Not Available							
Flecked	65	93	66	84	Not Available							
Gabardine	76	125	77	113	Not Available							
Gazebo	72	108	73	101	75	84	89	82	75	84	89	82
Harbor	72	75	72	68	Not Available							
Hopewell	92	120	82	130	Not Available							
Kyoto	71	112	72	102	Not Available							

Due to continuous manufacturing improvements, minimums and maximums are subject to change. Please call customer service for up to date size considerations.

Z-Wave Motorization Features and Size Considerations

This table provides the maximum shade size available by fabric for dual shades.

Scallops will decrease the maximum height by 6¼" for roller fabrics only.

Fabric turned width for height (railroaded) may curl along its edge. This is not a defect in the product.

Only the large cassette valance is available for the dual shade. Small and medium cassette valances are not available.

Minimum Shade Size

For all fabrics: minimum shade width: 16"; minimum shade height: 13"

Maximum Shade Size: Dual Shades

Fabric Styles	Normal Orientation				Fabric Turned Width for Height (railroaded)							
	Z-Wave 12 Volt Motor No Cassette/ No Valance		Z-Wave 12 Volt Motor Large Cassette		Z-Wave 12 Volt Motor No Cassette/ No Valance at Max Length		Z-Wave 12 Volt Motor No Cassette/ No Valance at Max Width		Z-Wave 12 Volt Motor Large Cassette at Max Length		Z-Wave 12 Volt Motor Large Cassette at Max Width	
	Width (inches)	Height (inches)	Width (inches)	Height (inches)	Width (inches)	Height (inches)	Width (inches)	Height (inches)	Width (inches)	Height (inches)	Width (inches)	Height (inches)
Landon	71	83	72	75	Not Available							
Landscape	92	144	92	144	Not Available							
Linen	72	81	72	73	Not Available							
Manhattan LF (Deep Water, Beachy Blue, Muted Silver, Iron)	94	121	94	121	95	110	95	110	95	110	95	110
Manhattan LF (Muslin)	76	144	76	144	86	68	101	66	86	68	101	66
Manhattan LF (White, Off White, Night, Canyon)	92	140	92	127	84	84	98	82	84	84	98	82
Manhattan RD (Deep Water, Beachy Blue, Muted Silver, Iron)	86	109	87	97	86	108	86	108	87	97	87	97
Manhattan RD (Muslin)	76	109	72	115	79	68	93	66	79	68	93	66
Manhattan RD (White, Off White, Night, Canyon)	86	109	87	97	76	84	90	82	76	84	90	82
Muse 1% (Good Egg, Formal)	68	75	70	67	68	75	84	60	70	67	86	53
Muse 1% (Stovepipe, Alaska Sky, Fresh Mocha, Irish Oatmeal)	68	73	70	65	68	73	84	58	70	65	87	51
Muse 5% (Good Egg, Formal)	70	77	71	71	70	77	86	63	71	71	88	55
Muse 5% (Stovepipe, Alaska Sky, Fresh Mocha, Irish Oatmeal)	68	80	69	72	68	80	84	64	69	72	86	56
Mystify	71	84	72	76	Not Available							
Ornamental	80	102	81	92	Not Available							
Plush	74	61	75	54	Not Available							
Promenade	70	104	70	94	Not Available							
Revelation	85	92	71	98	Not Available							
Robin	92	140	92	133	Not Available							
Rustic	70	90	70	82	Not Available							
SafeElements	70	89	71	82	70	87	86	73	71	82	88	65
Santina	67	56	69	50	Not Available							
Shoreline	92	124	92	112	Not Available							
Sovereign	88	102	73	114	77	84	91	82	77	84	91	82
Steppe	74	68	75	62	74	68	91	54	75	62	92	48
Tahoe BO	56	84	58	74	Not Available							
Tahoe LF	74	88	63	97	Not Available							
Tuscan	76	144	76	144	86	68	101	66	86	68	101	66
Viva	94	121	95	107	Not Available							
Wales	84	88	70	98	Not Available							

Due to continuous manufacturing improvements, minimums and maximums are subject to change. Please call customer service for up to date size considerations.

Z-Wave Motorization™ Features and Size Considerations

This table provides the maximum shade size available by fabric for motorized lift shades. Fabric turned width for height (railroaded) may curl along its edge. This is not a defect in the product. Scallops will decrease the maximum height by 6¾" for roller fabrics only. Available valance options are cassette, fascia, and contour. No valance option is also available.

Minimum Shade Size

For all fabrics: minimum shade width: 16", minimum shade height: 13"

Maximum Shade Size: 12-Volt Motorized Lift

Fabric Styles	Normal Fabric Orientation						Fabric Turned Width for Height (railroaded)													
	Small Cassette		Medium Cassette		Large Cassette/ Contour Valance/ Flat Valance/ No Cassette/No Valance		3" Fascia		4" Fascia		Small Cassette		Medium Cassette		Large Cassette/ Contour Valance/Flat Valance/No Cassette/ No Valance at Max Length		3" Fascia		4" Fascia	
	Width (inches)	Height (inches)	Width (inches)	Height (inches)	Width (inches)	Height (inches)	Width (inches)	Height (inches)	Width (inches)	Height (inches)	Width (inches)	Height (inches)	Width (inches)	Height (inches)	Width (inches)	Height (inches)	Width (inches)	Height (inches)	Width (inches)	Height (inches)
Acadia BO	56	84	63	109	63	109	64	100	63	109	Not Available		Not Available		Not Available		Not Available		Not Available	
Acadia LF	73	93	72	110	72	110	72	110	72	110	Not Available		Not Available		Not Available		Not Available		Not Available	
Andes	91	131	91	131	91	131	91	131	91	131	Not Available		Not Available		Not Available		Not Available		Not Available	
Ballad	85	93	80	125	80	125	80	125	80	125	Not Available		Not Available		Not Available		Not Available		Not Available	
Basics	70	144	70	144	70	144	70	144	70	144	80	124	80	124	80	124	80	124	80	124
Baybridge	77	64	84	98	80	122	72	89	80	122	Not Available		Not Available		Not Available		Not Available		Not Available	
Boyden	74	84	81	124	81	124	84	100	81	124	Not Available		Not Available		Not Available		Not Available		Not Available	
Bristol	74	55	80	85	72	96	69	77	72	96	Not Available		Not Available		Not Available		Not Available		Not Available	
Candid (Fleeced White)	88	120	88	124	88	124	88	124	88	124	Not Available		Not Available		Not Available		Not Available		Not Available	
Candid (Snowfall, Smokey Taupe, Speckled Black, Brown Influence)	74	115	85	133	85	133	85	133	85	133	Not Available		Not Available		Not Available		Not Available		Not Available	
Candid (Toasted Sugar)	88	98	82	144	82	144	82	141	82	144	Not Available		Not Available		Not Available		Not Available		Not Available	
Cascade	78	126	91	136	91	136	91	136	91	136	Not Available		Not Available		Not Available		Not Available		Not Available	
Collins	102	118	100	144	100	144	100	144	100	144	Not Available		Not Available		Not Available		Not Available		Not Available	
Cora	71	94	80	120	80	120	81	113	80	120	Not Available		Not Available		Not Available		Not Available		Not Available	
EcoLiving	95	119	95	119	95	119	95	119	95	119	Not Available		Not Available		Not Available		Not Available		Not Available	
EnviroStyle	94	122	94	122	94	122	94	122	94	122	Not Available		Not Available		Not Available		Not Available		Not Available	
Estevan	90	118	89	132	89	132	89	132	89	132	Not Available		Not Available		Not Available		Not Available		Not Available	
Everly	95	118	95	125	95	125	95	125	95	125	Not Available		Not Available		Not Available		Not Available		Not Available	
Feedback 1% (Americano, Mineral Point)	82	94	79	112	79	112	79	112	79	112	82	94	79	112	79	112	79	112	79	112
Feedback 1% (Antler)	82	94	79	112	79	112	79	112	79	112	82	94	79	112	79	112	79	112	79	112
Feedback 1% (Fresh Fawn)	83	89	79	116	79	116	79	116	79	116	83	89	79	116	79	116	79	116	79	116
Feedback 1% (Coconut Milk, Farmhouse White)	82	98	79	121	79	121	79	121	79	121	82	98	79	121	79	121	79	121	79	121
Feedback 1% (Frostine, Shiny Nickel)	83	89	79	116	79	116	79	116	79	116	83	89	79	116	79	116	79	116	79	116

Due to continuous manufacturing improvements, minimums and maximums are subject to change. Please call customer service for up to date size considerations.

Z-Wave Motorization™ Features and Size Considerations

This table provides the maximum shade size available by fabric for motorized lift shades. Fabric turned width for height (railroaded) may curl along its edge. This is not a defect in the product. Scallops will decrease the maximum height by 6¼" for roller fabrics only. Available valance options are cassette, fascia, and contour. No valance option is also available.

Minimum Shade Size

For all fabrics: minimum shade width: 16", minimum shade height: 13"

Maximum Shade Size: 12-Volt Motorized Lift

Fabric Styles	Normal Fabric Orientation						Fabric Turned Width for Height (railroaded)													
	Small Cassette		Medium Cassette		Large Cassette/ Contour Valance/ Flat Valance/ No Cassette/ No Valance		3" Fascia		4" Fascia		Small Cassette		Medium Cassette		Large Cassette/ Contour Valance/ Flat Valance/ No Cassette/ No Valance at Max Length		3" Fascia		4" Fascia	
	Width (inches)	Height (inches)	Width (inches)	Height (inches)	Width (inches)	Height (inches)	Width (inches)	Height (inches)	Width (inches)	Height (inches)	Width (inches)	Height (inches)	Width (inches)	Height (inches)	Width (inches)	Height (inches)	Width (inches)	Height (inches)	Width (inches)	Height (inches)
Feedback 3% (Mineral Point)	82	96	79	116	79	116	79	116	79	116	82	96	79	116	79	116	79	116	79	116
Feedback 3% (Farmhouse White)	83	93	78	120	78	120	78	120	78	120	83	93	78	120	78	120	78	120	78	120
Feedback 3% (Frostine, Shiny Nickel)	83	96	80	120	80	120	80	120	80	120	83	96	80	120	80	120	80	120	80	120
Feedback 5% (Americiano, Antler, Mineral Point)	82	101	80	120	80	120	80	120	80	120	82	101	80	120	80	120	80	120	80	120
Feedback 5% (Coconut Milk, Farmhouse White)	83	101	80	124	80	124	80	124	80	124	83	101	80	124	80	124	80	124	80	124
Feedback 5% (Fresh Fawn, Frostine, Shiny Nickel)	84	96	81	121	81	121	81	121	81	121	84	96	81	121	81	121	81	121	81	121
Feedback 10% (Mineral Point, Farmhouse White)	84	106	82	124	82	124	82	124	82	124	84	106	82	124	82	124	82	124	82	124
Feedback 10% (Shiny Nickel, Frostine)	72	101	82	123	82	123	82	120	82	123	Not Available									
Fiji BO	94	118	94	119	94	119	94	119	94	119	Not Available									
Fiji LF	64	96	73	122	73	122	74	114	73	122	Not Available									
Flecked	92	106	89	132	89	132	89	132	89	132	Not Available									
Gabarcline	87	97	82	131	82	131	82	131	82	131	75	84	75	84	75	84	75	84	75	84
Gazebo	72	78	72	119	72	144	72	106	72	144	Not Available									
Harbor	92	124	92	144	92	144	92	144	92	144	Not Available									
Hopewell	79	96	79	144	79	144	79	138	79	144	Not Available									
Kyoto	71	85	79	111	79	111	81	101	79	111	Not Available									
Landon	92	144	92	144	92	144	92	144	92	144	Not Available									
Landscape											Not Available									

Due to continuous manufacturing improvements, minimums and maximums are subject to change. Please call customer service for up to date size considerations.

Z-Wave Motorization™ Features and Size Considerations

This table provides the maximum shade size available by fabric for motorized lift shades. Fabric turned width for height (railroaded) may curl along its edge. This is not a defect in the product. Scallops will decrease the maximum height by 6¾" for roller fabrics only. Available valance options are cassette, fascia, and contour. No valance option is also available.

Minimum Shade Size

For all fabrics: minimum shade width: 16", minimum shade height: 13"

Maximum Shade Size: 12-Volt Motorized Lift

Fabric Styles	Normal Fabric Orientation						Fabric Turned Width for Height (railroaded)							
	Small Cassette		Medium Cassette		Large Cassette/ Contour Valance/ Flat Valance/ No Cassette/ No Valance		3" Fascia		4" Fascia		Medium Cassette		Large Cassette/ Contour Valance/ Flat Valance/ No Cassette/ No Valance at Max Length	
	Width (inches)	Height (inches)	Width (inches)	Height (inches)	Width (inches)	Height (inches)	Width (inches)	Height (inches)	Width (inches)	Height (inches)	Width (inches)	Height (inches)	Width (inches)	Height (inches)
Linen	72	84	72	144	72	144	72	115	72	144	95	110	95	110
Manhattan LF (Deep Water, Beachy Blue, Muted Silver, Iron)	94	121	94	121	94	121	94	121	94	121	95	110	95	110
Manhattan LF (Muslin)	76	144	76	144	76	144	76	144	76	144	86	68	86	68
Manhattan LF (White, Off White, Night, Canyon)	92	140	92	140	92	140	92	140	92	140	84	84	84	84
Manhattan RD (Deep Water, Beachy Blue, Muted Silver, Iron)	85	114	82	139	82	139	82	139	82	139	86	108	86	108
Manhattan RD (Muslin)	76	114	76	144	76	144	76	144	76	144	79	68	79	68
Manhattan RD (White, Off White, Night, Canyon)	85	114	82	139	82	139	82	139	82	139	76	84	76	84
Muse 1% (Good Egg, Formal)	67	78	73	91	73	91	73	91	73	91	67	78	73	91
Muse 1% (Stovepipe, Alaska Sky, Fresh Mocha, Irish Oatmeal)	67	75	72	89	72	89	72	89	72	89	67	75	72	89
Muse 5% (Good Egg, Formal)	69	81	75	100	77	100	77	96	75	100	69	81	75	100
Muse 5% (Stovepipe, Alaska Sky, Fresh Mocha, Irish Oatmeal)	68	82	73	96	73	96	73	96	73	96	68	82	73	96
Mystify	71	84	79	110	80	110	80	103	79	110	Not Available			
Ornamental	79	105	91	128	91	128	91	125	91	128	Not Available			
Plush	73	63	78	96	76	100	68	87	76	100	Not Available			
Promenade	70	107	70	144	70	144	70	144	70	144	Not Available			

Due to continuous manufacturing improvements, minimums and maximums are subject to change. Please call customer service for up to date size considerations.

Z-Wave Motorization™ Features and Size Considerations

This table provides the maximum shade size available by fabric for motorized lift shades. Fabric turned width for height (railroaded) may curl along its edge. This is not a defect in the product. Scallops will decrease the maximum height by 6¼" for roller fabrics only. Available valance options are cassette, fascia, and contour. No valance option is also available.

Minimum Shade Size

For all fabrics: minimum shade width: 16", minimum shade height: 13"

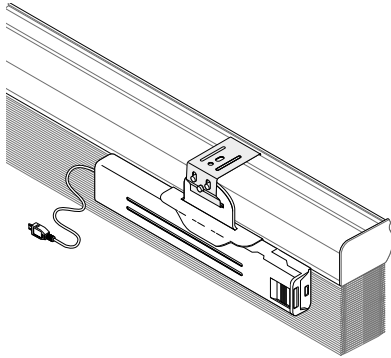
Maximum Shade Size: 12-Volt Motorized Lift

Fabric Styles	Normal Fabric Orientation						Fabric Turned Width for Height (railroaded)							
	Small Cassette		Medium Cassette		Large Cassette/ Contour Valance/ Flat Valance/ No Cassette/ No Valance		3" Fascia		4" Fascia		Medium Cassette		Large Cassette/ Contour Valance/ Flat Valance/ No Cassette/ No Valance at Max Length	
	Width (inches)	Height (inches)	Width (inches)	Height (inches)	Width (inches)	Height (inches)	Width (inches)	Height (inches)	Width (inches)	Height (inches)	Width (inches)	Height (inches)	Width (inches)	Height (inches)
Revelation	84	96	80	124	80	124	80	124	80	124	Not Available			
Robin	92	140	92	140	92	140	92	140	92	140	Not Available			
Rustic	70	93	70	142	70	144	70	126	70	144	Not Available			
SafeElements	70	89	79	109	79	109	79	109	79	109	83	86	83	86
Santina	67	58	73	89	71	103	63	80	71	103	Not Available			
Shoreline	91	132	91	133	91	133	91	133	91	133	Not Available			
Sovereign	87	106	82	144	82	144	82	144	82	144	77	84	77	84
Steppe	73	71	79	108	79	109	84	84	79	109	83	86	84	84
Tahoe BO	56	87	63	114	63	114	64	103	63	114	Not Available			
Tahoe LF	74	91	72	118	72	118	72	118	72	118	Not Available			
Tuscan	76	144	76	144	76	144	76	144	76	144	86	68	86	68
Viva	94	121	94	121	94	121	94	121	94	121	Not Available			
Wales	84	92	79	122	79	122	79	122	79	122	Not Available			

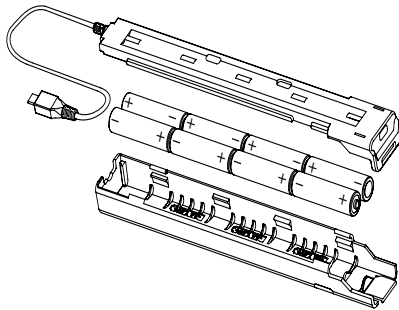
Due to continuous manufacturing improvements, minimums and maximums are subject to change. Please call customer service for up to date size considerations.

Z-Wave Motorization Power Options

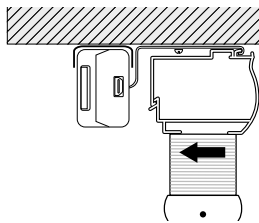
12-Volt Power Considerations



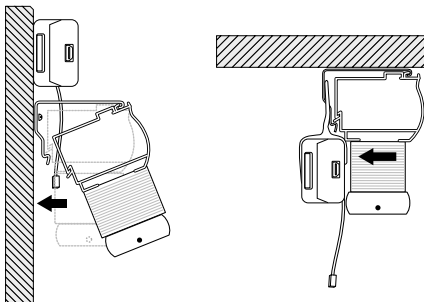
Cellular and Pleated
Battery Consideration



Battery Case

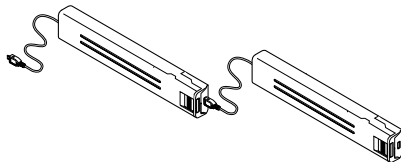


Ceiling/Inside Mount

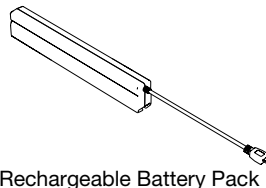


Outside Mount

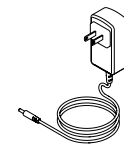
Inside Mount



Dual Battery Cases



Rechargeable Battery Pack



Li-Ion Charger

Motors can be powered by batteries, rechargeable battery pack, or plug-in transformer. Each shade requires a motor and appropriate power source.

Power Considerations

Larger shades consume more power while operating. When choosing the appropriate power source based upon the shade size, we recommend the following power sources for the best performance.

Shade Size square inches (cm ²)	Non-Rechargeable Recommended Power Source	Rechargeable Battery Pack Estimated Battery Life Before Recharge* Single Pack Only
0 to 3,600 (0 to 23,225.8)	Batteries (single or dual) or plug-in	≈12 months
3,600 to 7,200 (23,225.8 to 46,451.5)	Dual battery cases or plug-in	≈6-12 months
>7,200 (46,451.5)	Plug-in only	≈6 months or Less

Dual battery cases are recommended for larger shades (over 3,600 square inches (23,225.8 cm²)) to extend battery life when using non-rechargeable solutions.

Transformer power is recommended for larger shades (over 7,200 square inches (46,451.5 cm²)) to provide the best experience with regular shade operation.

Battery Case Considerations

Battery power recommended for maximum of 10 shades for best battery performance.

Battery cases are installed in space outside of the product and can be a challenge to hide in some windows.

For Inside Mounts:

- The cleanest and simplest method available for cellular and pleated shades is the integrated battery case hanger; this hanger attaches directly to a shade bracket to support the battery case while allowing the case to be removed for battery changes; additional recessed space will be needed.

For Outside Mounts:

- For outside mounts, battery cases can be installed above or to the side of the shade.

NOTE: For best performance with non-rechargeable solutions, use only AA lithium batteries.

Battery case dimensions: 9¼" (23.5 cm) x 1¼" (3.2 cm) x 7⁄8" (2.3 cm)

Dual battery cases installed end-to-end: require 21" (53.4 cm) of space (including connectors)

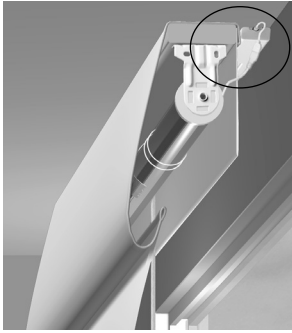
Battery case and rechargeable battery pack minimum recessed space (installed with bracket): product minimum recessed space + ¾" (2.0 cm)

Rechargeable Battery Pack dimensions: 8⁹⁄₁₆" (21.8 cm) x 1⁷⁄₁₆" (3.7 cm) x 1⁵⁄₁₆" (2.4 cm)

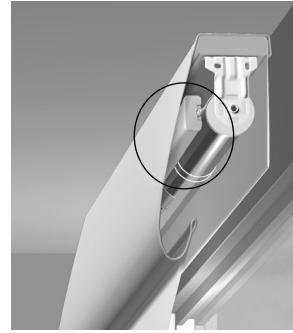
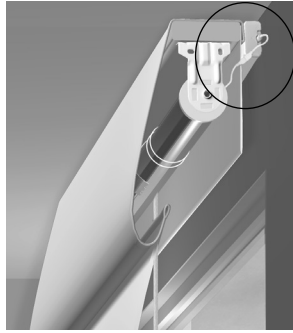
Z-Wave Motorization Power Options

12-Volt Power Considerations

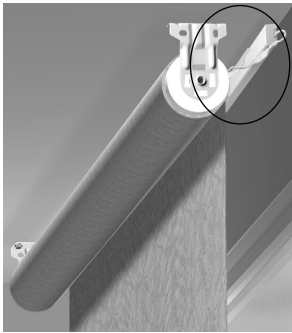
Solar/Roller, Natural Shades, Tailored Roman Shade Battery Considerations



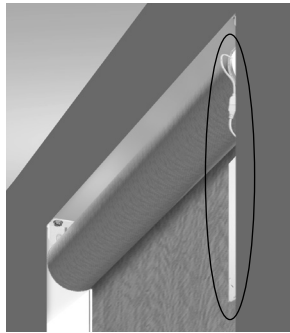
Tailored Roman/Natural Shades
Battery Case
Mounted Behind



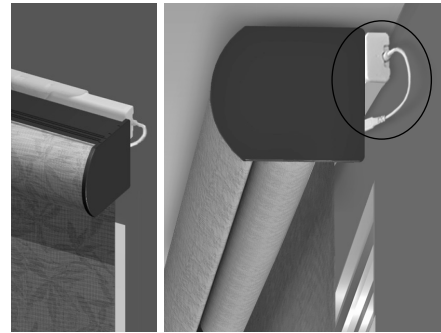
Tailored Roman/Natural Shades
Battery Case
Mounted on Headrail



Solar Shades
Outside Mount
Battery Pack



Solar Shades
Inside Mount Battery Pack



Solar, Layered, and
Sheer Shades with Cassette
Battery Pack

Transformer power recommended for shade systems of any quantity.

DC Plug-In Transformer Considerations

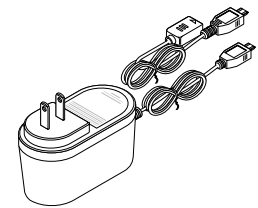
A power outlet must be within cord length to power motor.

Transformer includes 72" power cord and 96" extension cable (power cord and extension cable cannot be cut to length or trimmed).

A transformer is recommended on all shades over 7,200 square inches.

Transformer dimensions:

3¼" wide x 2" deep (not including plug) x 1½" tall (as you look at the plug in the outlet).



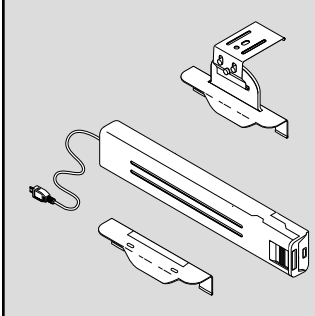
DC Plug-In Transformer

NOTE: Due to the many variations of installations, wire management components are not included with your motorized shade system. There are numerous wire management products available at your local hardware store or home improvement center to help disguise the power cord when using a plug-in transformer. An example of a popular wire management accessory is wire channel. Wire channel is a vinyl sheathing that can be placed along the window casing or wall that will house and conceal exposed wiring for a clean and professional appearance.

Z-Wave Motorization Power Options

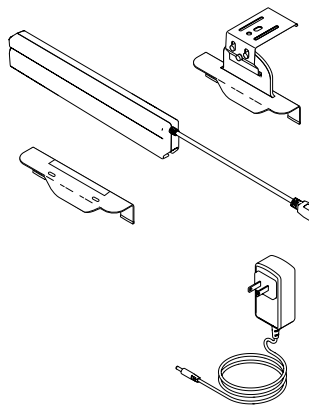
12-Volt Power Components

NOTE: These power supplies are not compatible with EasyView RTS motors.



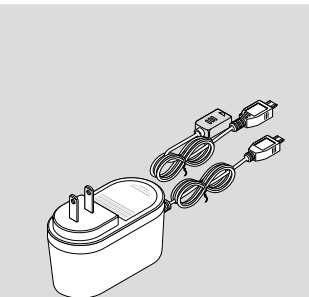
Reloadable Battery Case

- Reloadable: available with or without batteries
- Multiple mounting options provided
- Simple case design allows for easy battery replacement
- Recommend shades greater than 3,600 square inches utilize two single battery cases (dual cases) to extend battery life
- For shades exceeding 7,200 square inches, we recommend a plug-in transformer
- For best performance, use only AA lithium batteries (each case requires 8 AA lithium batteries)
- 48" and 96" (extensions available, maximum of 2 per motor)
- Battery power recommended for maximum of 10 shades for best battery performance



Rechargeable Battery Pack

- Reloadable: available with or without batteries
- Multiple mounting options provided
- Simple case design allows for easy battery replacement
- Recommend shades greater than 3,600 square inches utilize two single battery cases (dual cases) to extend battery life
- For shades exceeding 7,200 square inches (46,451.5 cm²) we recommend a plug-in transformer
- For best performance, use only AA lithium batteries (each case requires 8 AA lithium batteries)
- Battery power recommended for maximum of 10 shades for best battery performance
- The rechargeable battery pack comes as a sealed pack with the batteries already included. Batteries are charged by plugging the charger into the pack.
- 48" (122.0 cm) and 96" (243.9 cm) motor-to-battery extensions available, maximum of 2 per motor
- Rechargeable battery packs ship at 30% charge and must be fully charged prior to installation
- Dual pack configuration is not available or necessary for the rechargeable battery packs
- One Lithium-Ion Charger is required per order; sold separately
- Lithium-Ion charger cable is 6 ft. (1.9 m)
- Lithium-Ion charger has an LED that turns red to indicate charging and green to indicate fully charged
- Fully charging the rechargeable battery pack takes an average of 5 hours



Plug-In Transformer

- Eliminates the need for batteries
- Small plug profile
- Cord can be concealed behind curtains or along trim
- 72" power cord and 96" extension cable (power cord and extensions cannot be cut to length)
- We require shades greater than 7,200 square inches utilize a transformer to eliminate changing batteries frequently
- Available in White only

Transformer Dimensions

- 3¼" wide x 2" deep (not including plug) x 1½" tall (as you look at the plug in the outlet)
- Wire management components are not included with your motorized shade system
 - Refer to 12-volt power considerations for further details

For pricing, see Z-Wave Motorization control motor pricing by product: radio frequency (RF).

Z-Wave Motorization Control Options

Z-Wave Motorization Controls

NOTE: These controls are not compatible with EasyView RTS motors.



Z-Wave Standard Remote (not available with sheer and layered shades)

The Z-Wave standard remote is meant to operate an individual shade (one to one). This helps ensure simple, reliable control as well as simplifying the process of readjusting pre-set positions if it becomes necessary—without removing power from adjacent shades. However, the basic control can be paired to multiple shades to provide group control.

- Includes convenient mounting hardware
- Battery included—CR2430
- Available in White



Z-Wave Plus Remote

- Single-channel control
- Used to control single shades or a group of shades simultaneously
- Set and use an intermediate position for your shades
- Includes convenient mounting hardware
- Battery included—CR2430
- Available in White



Z-Wave Plus Remote Decorator Wall Plate Kit (Z-Wave plus remote sold separate)

- Provides attractive mounting option to match look of existing light switches
- Locates the remote where most convenient for the user
- Helps prevent misplacing of remote when not in use
- Mounts flush to wall with included anchors, no cutting of drywall needed
- Available in White only



Z-Wave Premium Remote (12-channel)

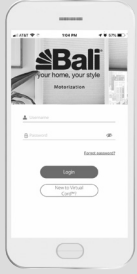
- 12-channel remote, controls up to 24 shades
- Control single shades on each channel or group shade performing the same function
- Shades are added to the remote from the manufacture. Channel assignment will need to be done at time of install.
- Convenient display provides easy programming
- Set and use an intermediate position for your shades
- Includes mounting wall plate and hardware; mounts to wall with anchors (see Z-Wave Motorization premium remote mounting options)
- Batteries included—2 AAA
- Available in White

For pricing, see Z-Wave motorization controls pricing.

Z-Wave Motorization Controls Features

Z-Wave Motorization Controls

NOTE: These controls are not compatible with EasyView RTS motors.



Bali Motorization App and Gateway

- Controls up to 30 Z-wave devices (shade motors and remotes)
- Average Home Coverage: approx. 2,500 square feet depending on a variety of factors including number of walls and material of walls
- Multiple gateways can be added to an account on the Motorization App to extend coverage and number of devices
- Control single shades individually with the ability to group shades in rooms for additional functionality
- Integrate directly with Amazon Alexa and Google Assistant for voice control
- Create routines to control multiple shades with the ability to also set timers
- Set and use favorite positions
- Advanced settings allow for easy control of limits and roll direction
- Bali Motorization App downloadable for free from the App Store and Google Play
- Compatible with Apple and Android devices
- Gateway and Adapter (shown in the image to the left) are sold together. The gateway and adapter must be plugged into a constant source of power
- Requires a 2.4Ghz, password protected, Wi-Fi network
- Multiple users can be added to an account with the option to assign different permission levels

EasyView Features and Size Considerations

Motorized Shades

Refer to individual product information guide and price list for specific option and size information for the product being ordered.

EasyView Radio Frequency (RF)

Motorized EasyView shades feature a Somfy motor and accessories. All EasyView radio frequency motors utilize Somfy's proprietary protocol Radio Technology Somfy (RTS). Motorized shades are available with cellular, pleated, solar, and roller shades only and feature the following:

EasyView Features

- Window treatments can be operated from virtually anywhere in the home, up to 65 feet
- Provides easy operation of hard-to-reach or large window coverings
- A safer alternative to accessible cords that are traditionally used to operate window coverings; ideal for homes with children and pets
- Manage heat loss and gain automatically; a great way to reduce your energy bill in any season
- Protect furniture from UV rays
- Low voltage motorization requires no costly electrical hardwiring

Control Options Available

- Remote: convenient, portable control (single-channel available)

Warranty

- Motorization components and accessories have a five-year limited warranty, excluding batteries.

EasyView Features and Size Considerations

Cellular Shades Motorized Lift

Order Entry: EasyView Motor



Refer to individual product information guide for specific option and size information for the product being ordered.

Product Specifications

- Motor located on right side within headrail
- Available as corner and bay window application
- Available with Wood Cornice and Valance
- Available with reversible fabric
- Not available with bottom up/top down, top down continuous-loop, sun up/sun down, combination shades, Skytrack Skylight, specialty shapes or multiple shades on one headrail.
- Not available with hold down brackets, side mount brackets or room-darkening side channels

Control Options Available

- Remote: convenient, portable control (see EasyView options for availability)

NOTE: Motorization components and accessories have a five-year limited warranty, excluding batteries.

Size Considerations

Fabric Style	Maximum Shade Size (square inches)
½" DC Hideaway	3,000
¾" SC Serenade	4,500
1¼" SC Halo, ¾" SC Hideaway, and ½" DC Halo	6,000
All Other Fabrics	7,500

Motor Type	Minimum Width (inches)	Maximum Width (inches)	Minimum Height (inches)	Maximum Height (inches)
EasyView Motor (CL30)	20	72"	9	72"

*This is the shade size maximum limit for this motor type, shades size limit may be smaller based on specific fabric type.

NOTE: For all inside mount applications, ⅜" deduction is taken by manufacturer on overall width.

Power Size Considerations

Fabric Style	Recommendation Based on Maximum Shade Size (square inches)		
	Single Battery Tube	Dual Battery Tube	Plug-In Transformer
½" DC Hideaway	<1,500	<2,500	<3,000
¾" SC Serenade	<2,000	<3,500	<4,500
1¼" SC Halo, ¾" SC Hideaway, and ½" DC Halo	<2,750	<5,000	<6,000
All Other Fabrics	<3,500	<6,000	<7,500

NOTE: The chart above reflects manufacturer's power source recommendation for best performance based on motor type, shade size, and fabric type. For best performance, orders of 10 or more shades are recommended to use plug-in transformer.

Depth Requirements for Inside Mount

Cell Size	Headrail Dimensions (inches)				
		Minimum Depth Mount (inches)	Flush with Casing (inches)	Minimum Depth Mount (inches)	Flush with Casing (inches)
1¼" Single Cell	1⅝ x 3⅜	1⅝	3⅝	1⅝	3⅝
¾" Single Cell ½" Double Cell	1⅞ x 2⅞	⅝	2⅝	⅝	2⅝
⅜" Single Cell	1⅞ x 2⅞	⅝	2⅝	⅝	2⅝

EasyView Features and Size Considerations

Pleated Shades Motorized Lift

Order Entry: EasyView Motor



Refer to individual product information guide for specific option and size information for the product being ordered.

Product Specifications

- Motor located on right side within headrail
- Available with Dayliner and Midnight Liner
- Available as corner and bay window application
- Available with Wood Cornice and Valance
- Not available with bottom up/top down, sun up/sun down, combination shades, Skytrack Skylight, specialty shapes or multiple shades on one headrail.
- Not available with hold down brackets, side mount brackets or room-darkening side channels

Control Options Available

- Remote: convenient, portable control (see EasyView options for availability)

NOTE: Motorization components and accessories have a five-year limited warranty, excluding batteries.

Size Considerations

Fabric Style	Maximum Shade Size (square inches)
2" Gabardine, Dunes, Intuition and Shoreline	3,000
1" Gabardine; 2" Fiddlestix, Rainforest, Reflections, and Taffeta	4,500
1" Dunes, Innocence, Intuition, Shoreline, and Taffeta; 2" Art Deco, Motif and Westport	6,000
1" Luminance, Motif, Reflections, and Westport; Liner only shades	7,500

Easyview Size Considerations	Minimum Width [†] (inches)	Maximum Width (inches)	Minimum Height (inches)	Maximum Height (inches)
1" Standard Pleat	20	72* [†]	9	72*
1" Neat Pleat®	20	72* [†]	6	72*
2" Neat Pleat	20	72* [†]	12	72*

NOTE: For all inside mount applications, 3/8" deduction is taken by manufacturer on overall width.

Power Size Considerations

Fabric Style	Recommendation Based on Maximum Shade Size (square inches)		
	Single Battery Tube	Dual Battery Tube	Plug-In Transformer
2" Gabardine, Dunes, Shoreline, and Intuition	<1,500	<2,500	<3,000
1" Gabardine; 2" Fiddlestix, Rainforest, Reflections, and Taffeta	<2,000	<3,500	<4,500
1" Dunes, Innocence, Intuition, Shoreline, and Taffeta; 2" Art Deco, Motif and Westport	<2,750	<5,000	<6,000
1" Luminance, Motif, Reflections, and Westport; Liner only shades	<3,500	<6,000	<7,500

NOTE: The chart above reflects manufacturer's power source recommendation for best performance based on motor type, shade size, and fabric type. For best performance, orders of 10 or more shades are recommended to use plug-in transformer.

Depth Requirements for Inside Mount

Shade Type	Headrail Dimensions (inches)	Headrail Mounting Diagrams	
		Partially recessed headrail in window casing/molding	Fully recessed headrail in window casing/molding
		Minimum Depth Mount (inches)	Flush with Casing (inches)
1" Pleat	1 5/8 x 2 3/8	3/8	2 3/8
2" Pleat	1 5/8 x 2 3/8	3/8	2 3/8

EasyView Features and Size Considerations

Roller and Solar Shades Motorized Lift

Order Entry: EasyView Motor



Refer to individual product information guide for specific option and size information for the product being ordered.

Product Specifications

- Motor located on right or left side; standard is on right
- Available with standard or reverse roll; reverse roll not available with any valance option
- Available with valance styles: cassette, contour, fascia, wood valance and wood cornice
- Available as corner and bay window application
- Available with fabric rotated 90° (width for height)
- Available with as Dual Shade (integrates two fabrics that can be independently raised and lowered as needed); each shade requires a power source)
- Available with finishing options: scallops, gimp trim, bead trim
- Not available with hold down brackets

Control Options Available

- Remote: convenient, portable control (see EasyView options for availability)

NOTE: Motorization components and accessories have a five-year limited warranty, excluding batteries.

Light Gap

Valance Type	Light Gap per Side (inches)
Contour, Fascia, No Valance	$\frac{9}{16}$ to $\frac{13}{16}$
All Cassette Sizes	$\frac{9}{16}$ to $\frac{15}{16}$
Dual Motorized with No Valance	$\frac{9}{16}$ to $\frac{13}{16}$
Dual Motorized with Cassette	$\frac{9}{16}$ to $\frac{15}{16}$

Size Considerations

Motor Type	Minimum Width (inches)	Minimum Height (inches)
EasyView Motor (RU30)	13	13

NOTE: See size charts on following pages.

Power Size Consideration Chart

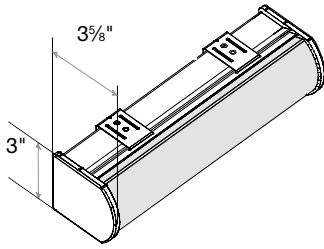
Fabric Group	Battery Tube AA Alkaline (square inches)	Dual Battery Tube AA Alkaline (square inches)	Plug-In Transformer (square inches)
A	<5,200	<5,200	<5,200
B	<3,500	$\geq 3,500$	$\geq 3,500$
C	<2,500	$\geq 2,500$	$\geq 2,500$
D	<1,750	$\geq 1,750$ and <4,000	$\geq 4,000$

NOTE: 72" x 72" = 5,184 square inches in area, this is the shade size maximum limit for this system, shade size maximum limit may be smaller based on specific fabric group.

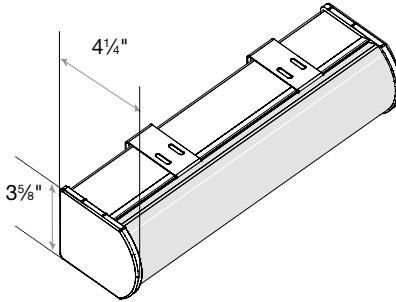
EasyView Size Considerations

Motorized Lift and Dual Shade: Mounting Depth Illustrations

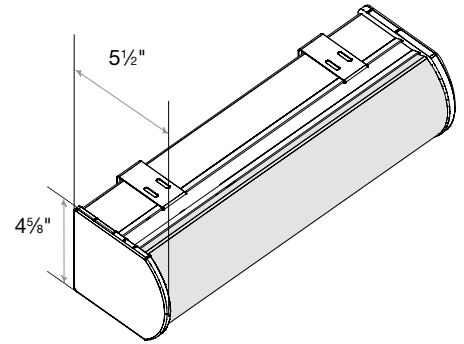
The following diagrams illustrate the mounting depth requirements for shades mounted inside window casements.



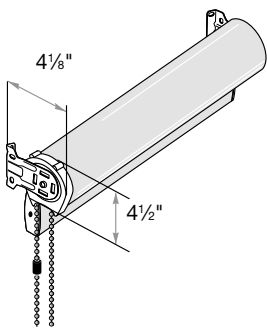
Small Cassette Valance
1 3/8" Minimum Inside Mount



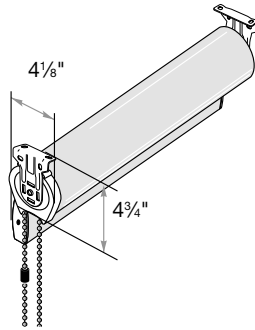
Medium Cassette Valance
1 1/4" Minimum Inside Mount



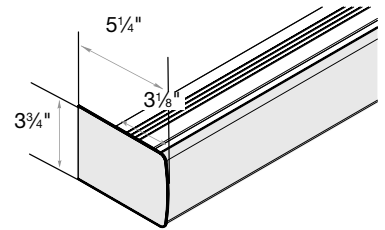
Large/Dual Cassette Valance
1 1/4" Minimum Inside Mount



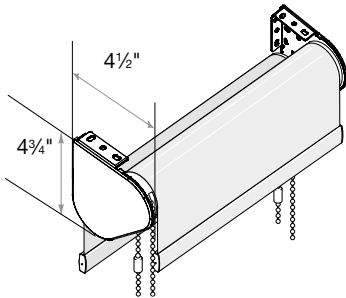
No Valance*
3/4" Minimum Inside/Side Mount



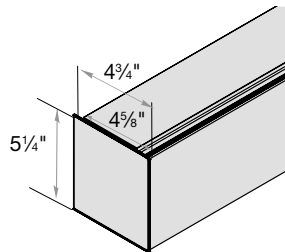
No Valance*
4 1/8" Minimum Inside/Top Mount



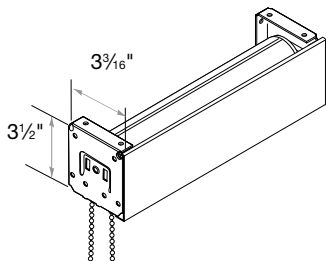
Contour Valance
2 7/16" Minimum Inside Mount
(return can be trimmed)



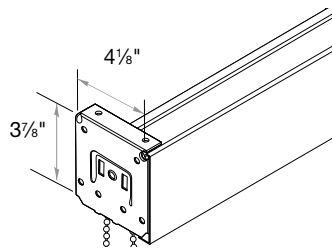
Dual Shade—No Cassette Valance
2" Minimum Inside/Top Mount
3/4" Minimum Inside/Side Mount



Flat Valance
2 15/16" Minimum Inside Mount
(return can be trimmed)



3" Fascia
2 3/4" Minimum Inside/Top Mount
3/4" Minimum Inside/Side Mount



4" Fascia
3 3/4" Minimum Inside/Top Mount
1 1/2" Minimum Inside/Side Mount

EasyView Size Considerations

Maximum Shade Size: 12-Volt Motor

Fabric	Small Cassette/ Medium Cassette/ Large Cassette/ Flat Valance/ Contour Valance/No Cassette/No Valance		3" Fascia		4" Fascia		Dual Shades			
							No Cassette/No Valance		Large Cassette	
							Maximum Width (inches)	Maximum Height (inches)	Maximum Width (inches)	Maximum Height (inches)
Acadia BO	57	72	57	72	57	72	57	72	57	72
Acadia LF	65	72	65	72	65	72	65	72	65	72
Andes	72	72	72	72	72	72	72	72	72	72
Ballad	72	72	72	72	72	72	72	72	72	72
Basics	70	72	70	72	70	72	70	72	70	72
Baybridge	72	72	72	72	72	72	72	64	72	64
Boyden	72	72	72	72	72	72	72	72	72	72
Bristol	65	72	65	72	65	72	72	55	72	55
Candid	72	72	72	72	72	72	72	72	72	72
Cascade	72	72	72	72	72	72	72	72	72	72
Collins	72	72	72	72	72	72	72	72	72	72
Cora	72	72	72	72	72	72	72	72	72	72
EcoLiving	72	72	72	72	72	72	72	72	72	72
EnviroStyle	72	72	72	72	72	72	72	72	72	72
Estevan	72	72	72	72	72	72	72	72	72	72
Everly	72	72	72	72	72	72	72	72	72	72
Feedback 1%	72	72	72	72	72	72	72	72	72	72
Feedback 3%	72	72	72	72	72	72	72	72	72	72
Feedback 5%	72	72	72	72	72	72	72	72	72	72
Feedback 10%	72	72	72	72	72	72	72	72	72	72
Fiji BO	72	72	72	72	72	72	72	72	72	72
Fiji LF	72	72	72	72	72	72	72	72	72	72
Flecked	68	72	68	72	68	72	68	72	68	72
Gabardine	72	72	72	72	72	72	72	72	72	72
Gazebo	72	72	72	72	72	72	72	72	72	72
Harbor	72	72	72	72	72	72	72	72	72	72
Hopewell	72	72	72	72	72	72	72	72	72	72
Kyoto	72	72	72	72	72	72	72	72	72	72
Landon	72	72	72	72	72	72	72	72	72	72
Landscape	72	72	72	72	72	72	72	72	72	72
Linen	72	72	72	72	72	72	72	72	72	72
Manhattan LF	72	72	72	72	72	72	72	72	72	72
Manhattan RD	72	72	72	72	72	72	72	72	72	72

EasyView Size Considerations

Maximum Shade Size: 12-Volt Motor

Fabric	Small Cassette/ Medium Cassette/ Large Cassette/ Flat Valance/ Contour Valance/No Cassette/No Valance		3" Fascia		4" Fascia		Dual Shades			
							No Cassette/No Valance		Large Cassette	
	Maximum Width (inches)	Maximum Height (inches)	Maximum Width (inches)	Maximum Height (inches)	Maximum Width (inches)	Maximum Height (inches)	Maximum Width (inches)	Maximum Height (inches)	Maximum Width (inches)	Maximum Height (inches)
Muse 1% (Good Egg, Formal)	63	72	63	72	63	72	63	72	63	72
Muse 1% (Stovepipe, Alaska Sky, Fresh Mocha, Irish Oatmeal)	61	72	61	72	61	72	61	72	61	72
Muse 5% (Good Egg, Formal)	70	72	70	72	70	72	70	72	70	72
Muse 5% (Stovepipe, Alaska Sky, Fresh Mocha, Irish Oatmeal,)	66	72	66	72	66	72	66	72	66	72
Mystify	72	72	72	72	72	72	72	72	72	72
Ornamental	72	72	72	72	72	72	72	72	72	72
Plush	70	72	70	72	70	72	72	63	72	63
Promenade	70	72	70	72	70	72	70	72	70	72
Revelation	72	72	72	72	72	72	72	72	72	72
Robin	72	72	72	72	72	72	72	72	72	72
Rustic	70	72	70	72	70	72	70	72	70	72
SafeElements	72	72	72	72	72	72	72	72	72	72
Santina	64	72	64	72	64	72	67	58	67	58
Shoreline	72	72	72	72	72	72	72	72	72	72
Sovereign	72	72	72	72	72	72	72	72	72	72
Steppe	72	72	72	72	72	72	72	71	72	71
Tahoe-BO	58	72	58	72	58	72	58	72	58	72
Tahoe-LF	65	72	65	72	65	72	65	72	65	72
Tuscan	72	72	72	72	72	72	72	72	72	72
Viva	72	72	72	72	72	72	72	72	72	72
Wales	72	72	72	72	72	72	72	72	72	72

EasyView Power and Control Options

12-Volt Power Components

EasyView RTS is available for cellular, pleated, solar, and roller products only. Each fabric has a power source recommendation chart. See the power considerations below for options.

12-volt motors can be powered by batteries, or plug-in transformer.

Battery Tube Considerations

Battery power recommended for maximum of 10 shades for best battery performance.

Battery tubes are installed outside of the product and can be challenging to hide in some applications.



Outside Mount



Inside Mount

- For outside mounts, battery tubes can be installed above or to the side of the shade
- For inside mounts, battery tubes are usually top-mounted (behind the headrail) between the shade and the window; to mount the battery tubes, additional recessed space will be needed

EasyView Low Voltage 12-Volt Power Components



Battery Tubes (EasyView 12-Volt motors only)

- Reloadable and are available with or without batteries
- 10 AA alkaline batteries
- Each tube includes 2 battery clips
- Optional 48" or 96" extensions available
- Power source is an option for cellular, pleated, solar, and roller shades only
- Dual tubes include an offset Y harness 11" and 27¼" cable lengths
- Review the size consideration charts for power recommendations; each fabric has a specific recommendation for dual battery tubes and plug in transformer
- Battery power recommended for maximum of 10 shades for best battery performance

Battery Tube Dimensions:

21¼" x 1⅛"

Battery Tube with Flush Mount:

product flush mount + 1⅛"

Battery Tube Minimum Recessed Space:

product minimum recessed space + 1⅛"

Dual Battery Tube with Flush Mount:

product flush mount + 2¼"

Dual Battery Tube Minimum Recessed Space:

product minimum recessed space + 2¼"



DC Plug-In Transformer Considerations

A power outlet must be within cord length to power motor.

12-Volt Transformer: 72" power cord and 96" extension cable (power cord and extensions cannot be cut to length).

- Dimensions: 3¼" wide x 2" deep (not including plug) x 1½" high (as you look at the plug in the outlet)

EasyView Radio Frequency (RF) Controls



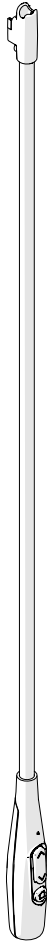
EasyView RTS Hand-Held Remotes

- Single-channel remote
- Used to control single shades on each channel or group blinds/shades performing the same function
- Battery included – CR2430
- Remote includes convenient mounting hardware for hanging when not in use
- RTS range 65 feet

Motorized Wand Features

Motorized Wand Lift

Motorized shades controlled by the motorized wand provide reliable, effortless operation of window coverings. Motorized shades with motorized wand lift are quiet, simple to install, and easy to operate.



Motorized Wand

Refer to individual product pages for specific option information for the product being ordered.

Features

- Simple, intuitive control by means of the motorized wand
- Consistent motor speed regardless of size or weight
- Efficiently manages energy (heat gain or loss)
- A safer alternative to cord lift options; ideal for homes with children and pets
- Clean design with LED operation confirmation
- LED feedback on the wand to simplify operation and programming
- Quiet, smooth shade operation
- “Limit Safety Protection” feature simplifies reprogramming, should it be necessary, while protecting the shade from damage
- Convenient soft-start and soft-end add a touch of class to shade travel
- Low-voltage motorization requires no costly electrical hard-wiring

Control Option Available

- Motorized wand—simple, convenient control at the window shade location
- Available in 24", 36", 48", and 84" lengths
- Available in White or Black

NOTE: Motorization components and accessories have a five-year limited warranty, excluding batteries.

Finished Shade Height (inches)	Motorized Wand Length (inches)
up to 42	24
42 $\frac{1}{16}$ to 54	36
54 $\frac{1}{16}$ to 90	48
over 90	84

Control length for motorized wand lift shades varies based on finished shade height (above). Optional wand length can be specified at the time of order.

Motorized Wand Size Considerations

Cellular Motorized Wand Lift

Order Entry: 12V Motorized Wand



Refer to individual product pages for specific option for the product being ordered.

Product Specifications

- Wand can be located on left or right side of shade
- Available as corner and bay window application
- Available with Wood Cornice and Valance
- Available with reversible fabric
- Not available with bottom up/top down, top down continuous-loop, sun up/sun down, combination shades, Skytrack Skylight, specialty shapes or multiple shades on one headrail.
- Not available with hold down brackets, side mount brackets or room-darkening side channels

Power Options

- Multiple power options available

NOTE: Motorization components and accessories have a five-year limited warranty, excluding batteries.

Motorized Wand Lift Size Considerations	Minimum Width [‡] (inches)	Maximum Width (inches)	Minimum Height (inches)	Maximum Height (inches)
Cellular Shades	22	144*	18	144*

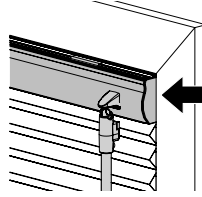
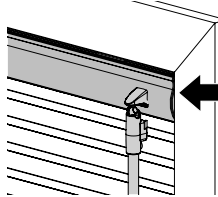
*This is the shade size maximum limit for this motor type, shades size limit may be smaller based on specific fabric type.

[‡]For all inside mount applications, $\frac{3}{8}$ " deduction is taken by manufacturer on overall width.

Cellular Fabric Styles	Maximum Shade Size (square inches)
$\frac{1}{2}$ " DC Hideaway	10,000
$\frac{3}{4}$ " SC Hideaway, Luxe, and Serenade $\frac{1}{2}$ " DC Halo, $\frac{3}{8}$ " SC Spellbound	12,500
$\frac{3}{4}$ " SC Cosmopolitan and $1\frac{1}{4}$ " SC Halo	14,000
$\frac{3}{4}$ " SC Brushstroke, Halo, Heirloom, and Impresario $\frac{3}{8}$ " SC Sunrise	17,000
All Other Fabrics	20,800*

*Shades can be manufactured at 144" x 144".

Depth Requirements for Inside Mount

Cell Size	Headrail Dimensions (inches)	 Partially recessed headrail in window casing/molding. Minimum Depth Mount (inches)	 Fully recessed headrail in window casing/molding. Flush with Casing (inches)
$1\frac{1}{4}$ " Single Cell	$1\frac{1}{8}$ x $3\frac{3}{16}$	$1\frac{1}{8}$	$3\frac{3}{8}$
$\frac{3}{4}$ " Single Cell $\frac{1}{2}$ " Double Cell	$1\frac{1}{8}$ x $2\frac{1}{8}$	$\frac{5}{8}$	$2\frac{1}{8}$
$\frac{3}{8}$ " Single Cell	$1\frac{1}{8}$ x $2\frac{1}{8}$	$\frac{5}{8}$	$2\frac{1}{8}$

Motorized Wand Size Considerations

Pleated Shades Motorized Wand Lift

Order Entry: 12V Motorized Wand



Refer to individual product pages for specific option for the product being ordered.

Product Specifications

- Wand can be located on left or right side of shade
- Available as corner and bay window application
- Available with Wood Cornice and Valance
- Not available with bottom up/top down, sun up/sun down, combination shades, Skytrack Skylight, specialty shapes or multiple shades on one headrail.
- Not available with hold down brackets, side mount brackets or room-darkening side channels

Power Options

- Multiple power options available

NOTE: Motorization components and accessories have a five-year limited warranty, excluding batteries.

Motorized Wand Lift Size Considerations	Minimum Width [†] (inches)	Maximum Width (inches)	Minimum Height (inches)	Maximum Height (inches)
1" Standard Pleat	22	144* [†]	18	96*
1" Neat Pleat [®]	22	120* [†]	18	96*
2" Neat Pleat	22	144* [†]	18	96*

*This is the shade size maximum limit for this motor type, shades size limit may be smaller based on specific fabric type.

[†]Based on fabric width with overlaps.

[‡]For all inside mount applications, 3/8" deduction is taken by manufacturer on overall width.

Pleated Fabric Styles	Maximum Shade Size (square inches)
2" Dunes, Fiddlestix, Gabardine, Intuition, Rainforest, and Shoreline	10,000
1" Dunes, Gabardine, Intuition, and Shoreline 2" Reflections	12,500
1" Art Deco, Luminance, Motif, Innocence, Reflections, Taffeta, and Westport 2" Motif, Taffeta, and Westport	14,000
1" Day and Midnight liner only shades 2" Day and Midnight liner only shade	17,000

*Shades can be manufactured at 144" x 144".

Depth Requirements for Inside Mount

Shade Type	Headrail Dimensions (inches)	Minimum Depth Mount (inches)	Partially recessed headrail in window casing/molding.	Flush with Casing (inches)	Fully recessed headrail in window casing/molding.
1" Pleat	1 ⁷ / ₁₆ x 2 ¹ / ₈	5/ ₈	5/ ₈	2 ³ / ₈	2 ³ / ₈
2" Pleat	1 ⁷ / ₁₆ x 2 ¹ / ₈	5/ ₈	5/ ₈	2 ³ / ₈	2 ³ / ₈

Motorized Wand Size Considerations

Roller and Solar Shades Motorized Wand Lift

Order Entry: 12V Motorized Wand



Refer to individual product information guide for specific option for the product being ordered.

Product Specifications

- Motor located on right or left side; standard is on right
- Available with standard or reverse roll; reverse roll not available with any valance option
- Available with valance styles: cassette, contour, fascia, wood valance and wood cornice
- Available as corner and bay window application
- Available with fabric rotated 90 degree (use proper symbol) (width for height)
- Available with finishing options: scallops, gimp trim, bead trim
- Not available with hold down brackets or Dual Shades

Power Options

- Multiple power options available

NOTE: Motorization components and accessories have a five-year limited warranty, excluding batteries.



Inside Mount Light Gap
Refer to Light Gap Chart

Inside Mount Light Gap	
Valance Type	Light Gap per Side (inches)
Contour, Fascia, No Valance	$\frac{9}{16}$ to $1\frac{1}{16}$
Cassette – All Sizes	$\frac{3}{4}$ to $1\frac{5}{16}$

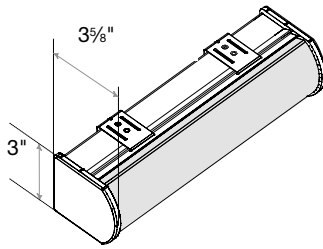
Size Considerations	
Minimum Width (inches)	Minimum Height (inches)
13	13

NOTE: See size charts on following pages.

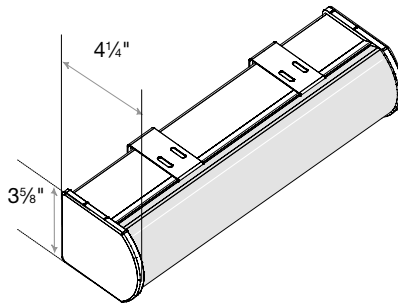
Motorized Wand Size Considerations

Motorized Lift: Mounting Depth Illustrations

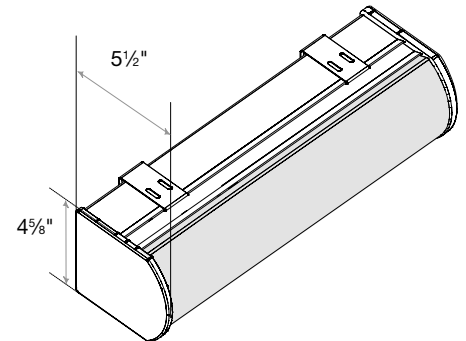
The following diagrams illustrate the mounting depth requirements for shades mounted inside window casements.



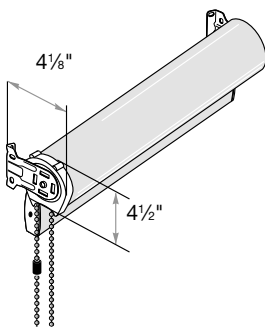
Small Cassette Valance
1 3/8" Minimum Inside Mount



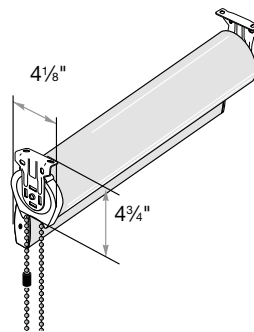
Medium Cassette Valance
1 3/4" Minimum Inside Mount



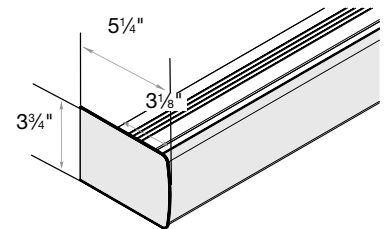
Large/Dual Cassette Valance
1 3/4" Minimum Inside Mount



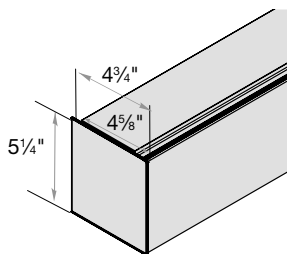
No Valance*
3/4" Minimum Inside/Side Mount



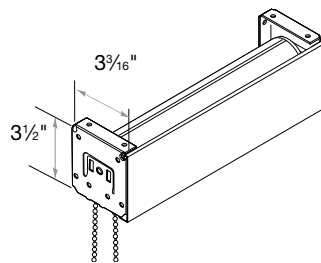
No Valance*
4 1/8" Minimum Inside/Top Mount



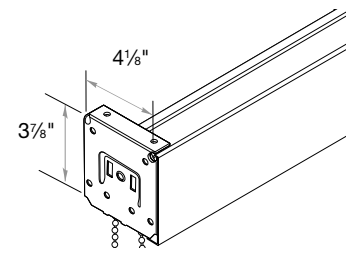
Contour Valance
2 7/16" Minimum Inside Mount
(return can be trimmed)



Flat Valance
2 15/16" Minimum Inside Mount
(return can be trimmed)



3" Fascia
2 3/4" Minimum Inside/Top Mount
3/4" Minimum Inside/Side Mount



4" Fascia
3 3/4" Minimum Inside/Top Mount
1 1/2" Minimum Inside/Side Mount

Motorized Wand Size Considerations

Minimum width: 13"
Minimum height: 13"

Roller and Solar Shades: Motorized Wand Lift Maximum Shade Size

Valance Type	Normal Fabric Orientation						Fabric Turned Width For Height (Railroaded)													
	Small Cassette		Medium Cassette		Large Cassette/ Contour Valance/ Flat No Valance		4" Fascia		Small Cassette		Medium Cassette		Large Cassette/ Contour Valance/ Flat No Valance/ No Cassette/ No Valance at Max Length		Large Cassette/ Contour Valance/ Flat No Valance/ No Cassette/ No Valance at Max Width		4" Fascia			
	Width (inches)	Height (inches)	Width (inches)	Height (inches)	Width (inches)	Height (inches)	Width (inches)	Height (inches)	Width (inches)	Height (inches)	Width (inches)	Height (inches)	Width (inches)	Height (inches)	Width (inches)	Height (inches)	Width (inches)	Height (inches)	Width (inches)	Height (inches)
Acadia BO	56	84	63	109	63	109	63	109	63	109	63	109	63	109	63	109	63	109	63	109
Acadia LF	73	93	72	110	72	110	72	110	72	110	72	110	72	110	72	110	72	110	72	110
Andes	91	131	91	131	91	131	91	131	91	131	91	131	91	131	91	131	91	131	91	131
Ballad	77	93	76	96	76	96	76	96	76	96	76	96	76	96	76	96	76	96	76	96
Basics	70	109	70	109	70	109	70	109	70	109	70	109	70	109	70	109	70	109	70	109
Baybridge	77	64	72	97	72	97	72	97	72	97	72	97	72	97	72	97	72	97	72	97
Boyden	74	84	75	100	75	100	75	100	75	100	75	100	75	100	75	100	75	100	75	100
Bristol	74	55	63	94	63	94	63	94	63	94	63	94	63	94	63	94	63	94	63	94
Candid (Fleeced White)	88	120	82	139	82	139	82	139	82	139	82	139	82	139	82	139	82	139	82	139
Candid (Snowfall, Smokey Taupe, Speckled Black, Brown Influence)	74	115	82	123	82	123	82	123	82	123	82	123	82	123	82	123	82	123	82	123
Candid (Toasted Sugar)	88	98	82	112	82	112	82	112	82	112	82	112	82	112	82	112	82	112	82	112
Cascade	78	126	91	136	91	136	91	136	91	136	91	136	91	136	91	136	91	136	91	136
Collins	102	118	100	144	100	144	100	144	100	144	100	144	100	144	100	144	100	144	100	144
Cora	71	94	73	96	73	96	73	96	73	96	73	96	73	96	73	96	73	96	73	96
EcoLiving	95	119	95	119	95	119	95	119	95	119	95	119	95	119	95	119	95	119	95	119
EnviroStyle	94	122	94	122	94	122	94	122	94	122	94	122	94	122	94	122	94	122	94	122
Estevan	90	118	89	132	89	132	89	132	89	132	89	132	89	132	89	132	89	132	89	132
Every	95	118	95	125	95	125	95	125	95	125	95	125	95	125	95	125	95	125	95	125
Feedback 1% (Americano, Antler, Mineral Point)	72	88	72	88	72	88	72	88	72	88	72	88	72	88	72	88	72	88	72	88
Feedback 1% (Fresh Fawn)	74	88	73	90	73	90	73	90	73	90	73	90	73	90	73	90	73	90	73	90
Feedback 1% (Coconut Milk, Farmhouse White)	72	95	72	95	72	95	72	95	72	95	72	95	72	95	72	95	72	95	72	95
Feedback 1% (Frostine, Shiny Nickel)	74	88	73	90	73	90	73	90	73	90	73	90	73	90	73	90	73	90	73	90
Feedback 3% (Mineral Point)	73	90	73	90	73	90	73	90	73	90	73	90	73	90	73	90	73	90	73	90
Feedback 3% (Farmhouse White)	73	91	73	91	73	91	73	91	73	91	73	91	73	91	73	91	73	91	73	91
Feedback 3% (Frostine, Shiny Nickel)	73	96	73	97	73	97	73	97	73	97	73	97	73	97	73	97	73	97	73	97
Feedback 5% (Americano, Antler, Mineral Point)	74	96	74	96	74	96	74	96	74	96	74	96	74	96	74	96	74	96	74	96
Feedback 5% (Coconut Milk, Farmhouse White)	76	96	76	96	76	96	76	96	76	96	76	96	76	96	76	96	76	96	76	96
Feedback 5% (Fresh Fawn, Frostine, Shiny Nickel)	77	96	75	100	75	100	75	100	75	100	75	100	75	100	75	100	75	100	75	100

Seams may be added to fabrics to accommodate long shade requirements. Seams will be placed as close to the tube as possible; seam location is not selectable. Seams are visible when the shade is fully extended.

Motorized Wand Size Considerations

Minimum width: 13"
Minimum height: 13"

Roller and Solar Shades: Motorized Wand Lift Maximum Shade Size

Valance Type	Normal Fabric Orientation						Fabric Turned Width For Height (railroaded)											
	Small Cassette		Medium Cassette		Large Cassette/ Contour Valance/ Flat No Cassette/ No Valance		4" Fascia		Small Cassette		Medium Cassette		Large Cassette/ Contour Valance/ Flat No Cassette/ No Valance at Max Length		Large Cassette/ Contour Valance/ Flat No Cassette/ No Valance at Max Width		4" Fascia	
	Width (inches)	Height (inches)	Width (inches)	Height (inches)	Width (inches)	Height (inches)	Width (inches)	Height (inches)	Width (inches)	Height (inches)	Width (inches)	Height (inches)	Width (inches)	Height (inches)	Width (inches)	Height (inches)	Width (inches)	Height (inches)
Feedback 10% (Mineral Point, Farmhouse White)	76	99	76	99	76	99	76	99	76	99	76	99	76	99	76	99	76	99
Feedback 10% (Shiny Nickel, Frostine)	77	106	76	108	76	108	76	108	77	106	76	108	76	108	76	108	76	108
Fiji BO	72	101	74	108	74	108	74	108	74	108	74	108	74	108	74	108	74	108
Fiji LF	94	118	94	119	94	119	94	119	94	119	94	119	94	119	94	119	94	119
Flecked	64	96	74	110	74	110	74	110	74	110	74	110	74	110	74	110	74	110
Gabardine	92	106	89	132	89	132	89	132	89	132	89	132	89	132	89	132	89	132
Gazebo	85	97	78	109	78	109	78	109	78	109	78	109	78	109	78	109	78	109
Harbor	72	78	72	114	72	114	72	114	72	114	72	114	72	114	72	114	72	114
Hopewell	92	124	92	144	92	144	92	144	92	144	92	144	92	144	92	144	92	144
Kyoto	79	96	76	109	76	109	76	109	76	109	76	109	76	109	76	109	76	109
Landon	71	85	72	87	72	87	72	87	72	87	72	87	72	87	72	87	72	87
Landscape	92	144	92	144	92	144	92	144	92	144	92	144	92	144	92	144	92	144
Linen	72	84	72	144	72	144	72	144	72	144	72	144	72	144	72	144	72	144
Manhattan LF (Deep Water, Beachy Blue, Muted Silver, Iron)	94	121	94	121	94	121	94	121	94	121	94	121	94	121	94	121	94	121
Manhattan LF (Muslin)	76	144	76	144	76	144	76	144	76	144	76	144	76	144	76	144	76	144
Manhattan LF (White, Off White, Night, Canyon)	92	140	92	140	92	140	92	140	92	140	92	140	92	140	92	140	92	140
Manhattan RD (Deep Water, Beachy Blue, Muted Silver, Iron)	82	110	82	110	82	110	82	110	82	110	82	110	82	110	82	110	82	110
Manhattan RD (Muslin)	76	114	76	121	76	121	76	121	76	121	76	121	76	121	76	121	76	121
Manhattan RD (White, Off White, Night, Canyon)	82	110	82	110	82	110	82	110	82	110	82	110	82	110	82	110	82	110
Muse 1% (Good Egg, Formal)	67	78	60	95	60	95	60	95	60	95	60	95	60	95	60	95	60	95
Muse 1% (Stovepipe, Alaska Sky, Fresh Mocha, Irish Oatmeal)	67	75	63	87	63	87	63	87	63	87	63	87	63	87	63	87	63	87
Muse 5% (Good Egg, Formal)	69	81	66	97	66	97	66	97	66	97	66	97	66	97	66	97	66	97
Muse 5% (Stovepipe, Alaska Sky, Fresh Mocha, Irish Oatmeal)	68	82	63	96	63	96	63	96	63	96	63	96	63	96	63	96	63	96
Mystify	71	84	72	86	72	86	72	86	72	86	72	86	72	86	72	86	72	86
Ornamental	79	105	91	128	91	128	91	128	91	128	91	128	91	128	91	128	91	128
Plush	73	63	66	98	66	98	66	98	66	98	66	98	66	98	66	98	66	98

Seams may be added to fabrics to accommodate long shade requirements. Seams will be placed as close to the tube as possible; seam location is not selectable. Seams are visible when the shade is fully extended.

Motorized Wand Size Considerations

Minimum width: 13"
Minimum height: 13"

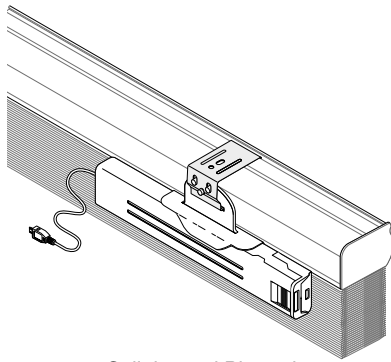
Roller and Solar Shades: Motorized Wand Lift Maximum Shade Size

Valance Type	Normal Fabric Orientation						Fabric Turned Width For Height (railroaded)									
	Small Cassette		Medium Cassette		Large Cassette/ Contour Valance/ Flat No Cassette/ No Valance		4" Fascia		Small Cassette		Medium Cassette		Large Cassette/ Contour Valance/ Flat No Cassette/ No Valance at Max Length		4" Fascia	
	Width (inches)	Height (inches)	Width (inches)	Height (inches)	Width (inches)	Height (inches)	Width (inches)	Height (inches)	Width (inches)	Height (inches)	Width (inches)	Height (inches)	Width (inches)	Height (inches)	Width (inches)	Height (inches)
Promenade	70	107	70	144	70	144	70	144	70	144	Not Available	Not Available	Not Available	Not Available	Not Available	Not Available
Revelation	76	96	76	96	76	96	76	96	76	96	Not Available	Not Available	Not Available	Not Available	Not Available	Not Available
Robin	92	140	92	140	92	140	92	140	92	140	Not Available	Not Available	Not Available	Not Available	Not Available	Not Available
Rustic	70	93	70	126	70	126	70	126	70	126	NO RR	NO RR	NO RR	NO RR	NO RR	NO RR
SafeElements	70	89	72	86	72	86	72	86	72	86	70	87	72	86	72	86
Santina	67	58	60	101	59	109	59	109	59	109	Not Available	Not Available	Not Available	Not Available	Not Available	Not Available
Shoreline	91	132	91	133	91	133	91	133	91	133	Not Available	Not Available	Not Available	Not Available	Not Available	Not Available
Sovereign	87	106	82	115	82	115	82	115	82	115	77	84	77	84	91	82
Steppe	73	71	67	110	67	110	67	110	67	110	73	71	73	84	73	84
Tahoe BO	56	87	63	114	63	114	63	114	63	114	Not Available	Not Available	Not Available	Not Available	Not Available	Not Available
Tahoe LF	74	91	72	118	72	118	72	118	72	118	Not Available	Not Available	Not Available	Not Available	Not Available	Not Available
Tuscan	76	144	76	144	76	144	76	144	76	144	86	68	86	68	101	66
Viva	94	121	94	121	94	121	94	121	94	121	Not Available	Not Available	Not Available	Not Available	Not Available	Not Available
Wales	74	92	72	96	72	96	72	96	72	96	Not Available	Not Available	Not Available	Not Available	Not Available	Not Available

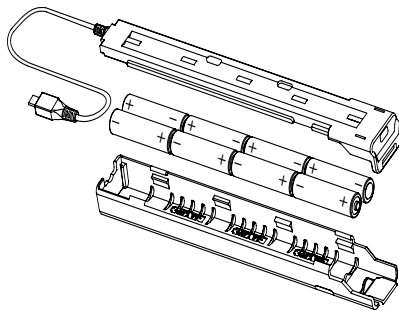
Seams may be added to fabrics to accommodate long shade requirements. Seams will be placed as close to the tube as possible; seam location is not selectable. Seams are visible when the shade is fully extended.

Motorized Wand Power Options

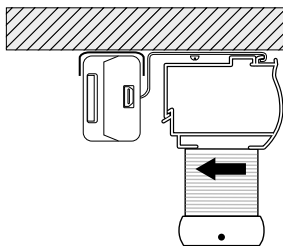
Motorized Wand Power Considerations



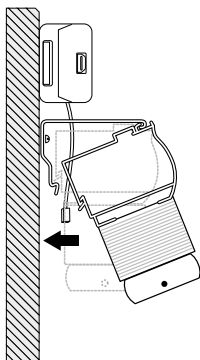
Cellular and Pleated Battery Consideration (back view)



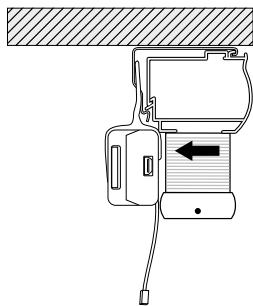
Battery Case (non-rechargeable solution)



Ceiling/Inside Mount



Outside Mount



Inside Mount

Motors can be powered by non-rechargeable AA batteries, rechargeable battery pack, or plug-in transformer. Each shade requires a motor and appropriate power source.

Power Considerations

Larger shades consume more power while operating. When choosing the appropriate power source based upon the shade size, we recommend the following power sources for the best performance.

Power Source	Estimated Life (Average Size Shade: 48" x 60")
Rechargeable Li-Ion Battery Pack	3+ Years (before recharge)
Reloadable Battery Case (AA Lithium)	2+ Years
Reloadable Battery Case (AA Alkaline)	1+ Years

Based on average size shade, opening and closing once per day.

Plug-in transformer or the rechargeable battery pack is recommended for larger shades (over 3,600 square inches) to extend battery life.

Transformer power is recommended for larger shades (over 7,200 square inches) to provide the best experience with regular shade operation.

Battery Case Considerations

Battery power recommended for maximum of 10 shades for best battery performance.

Battery cases are installed in space outside of the product and can be a challenge to hide in some windows.

For Inside Mounts

- The cleanest and simplest method available for cellular and pleated shades is the integrated battery case hanger; this hanger attaches directly to a shade bracket to support the battery case while allowing the case to be removed for battery changes; additional recessed space will be needed

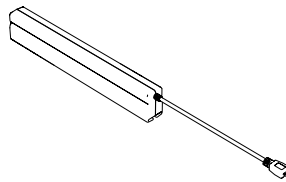
For Outside Mounts

- For outside mounts, battery cases can be installed above or to the side of the shade

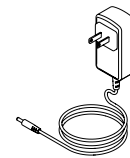
NOTE: For best performance with non-rechargeable solutions, use AA lithium batteries.

Power Source	Dimensions
Battery case	9 ¹ / ₄ " x 1 ¹ / ₄ " x 7 ¹ / ₈ "
Battery case minimum recessed space (installed with bracket)	product minimum recessed space + 3 ³ / ₄ "
Rechargeable battery pack	8 ⁹ / ₁₆ " x 1 ⁷ / ₁₆ " x 1 ⁵ / ₁₆ "

NOTE: Rechargeable Battery Packs ship at 30% charge, they will need to be fully charged before installation.



Rechargeable Battery Pack

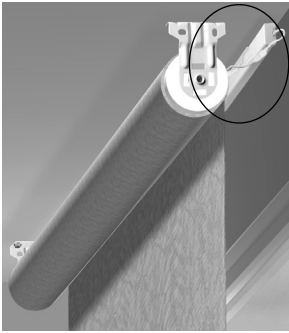


Li-Ion Charger

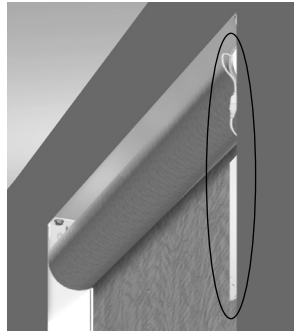
Motorized Wand Power Options

Power Considerations

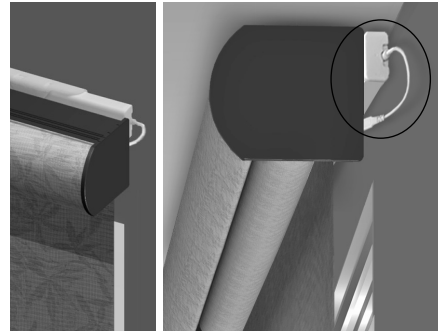
Solar/Roller Shade Battery Considerations



Solar/Roller Shades
Outside Mount Battery Pack



Solar/Roller Shades
Inside Mount Battery Pack



Solar/Roller Shades with Cassette
Battery Pack

Transformer power recommended for shade systems of any quantity.

DC Plug-in Transformer Considerations

A power outlet must be within cord length to power motor.

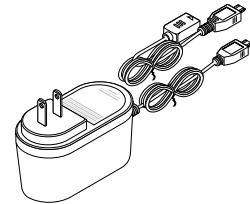
Transformer includes 72" power cord and a 96" extension cable (power cord and extension cord cannot be cut to length or trimmed).

A transformer is recommended on all shades over 7,200 square inches.

Transformer dimensions

4" wide x 2" deep (not including plug) x 1½" tall (as you look at the plug in the outlet).

NOTE: Due to the many variations of installations, wire management components are not included with your motorized shade system. There are numerous wire management products available at your local hardware store or home improvement center to help disguise the power cord when using a plug-in transformer. An example of a popular wire management accessory is wire channel. Wire channel is a vinyl sheathing that can be placed along the window casing or wall that houses and conceals exposed wiring for a clean and professional appearance.



DC Plug-In Transformer