

Precautionary approach to consider woodland caribou recovery in the area covered by Chapter 3 of the Agreement concerning a new relationship between le Gouvernement du Québec and the Crees of Québec

REVIEW OF THE FACTS

Three woodland caribou herds live in the area covered by Chapter 3 of the Agreement concerning a new relationship between le Gouvernement du Québec and the Crees of Québec, but the area currently has no caribou habitat management plan. The guidelines set out in Québec's Woodland Caribou Recovery Plan are not compatible with the terms and conditions of Chapter 3 of the "Paix des Braves", meaning that the task of producing caribou habitat management plans for this area is more complex. A special committee known as the Woodland Caribou Recovery Task Force was set up in February 2011 to make recommendations with a view to producing management plans for the three herds. In the meantime, however, until the Task Force submits its recommendations, it has become important to protect certain tracts of forest that are of strategic importance for the recovery of woodland caribou populations. In addition, in the current situation, the caribou-related requirements of forest certification, particularly those of the Forest Stewardship Council's (FSC) boreal standard, require us to take a precautionary approach.

The precautionary approach is designed to meet two of the main objectives of the Direction générale du Nord-du-Québec (DGR-10), namely:

- To ensure that woodland caribou recovery is taken into consideration in short-term forest plans, as stipulated in the *Act respecting threatened and vulnerable species*, and as set out in the Woodland Caribou Recovery Task Force's action plan;
- To provide a regional solution to the FSC's boreal standard indicators relating to woodland caribou.

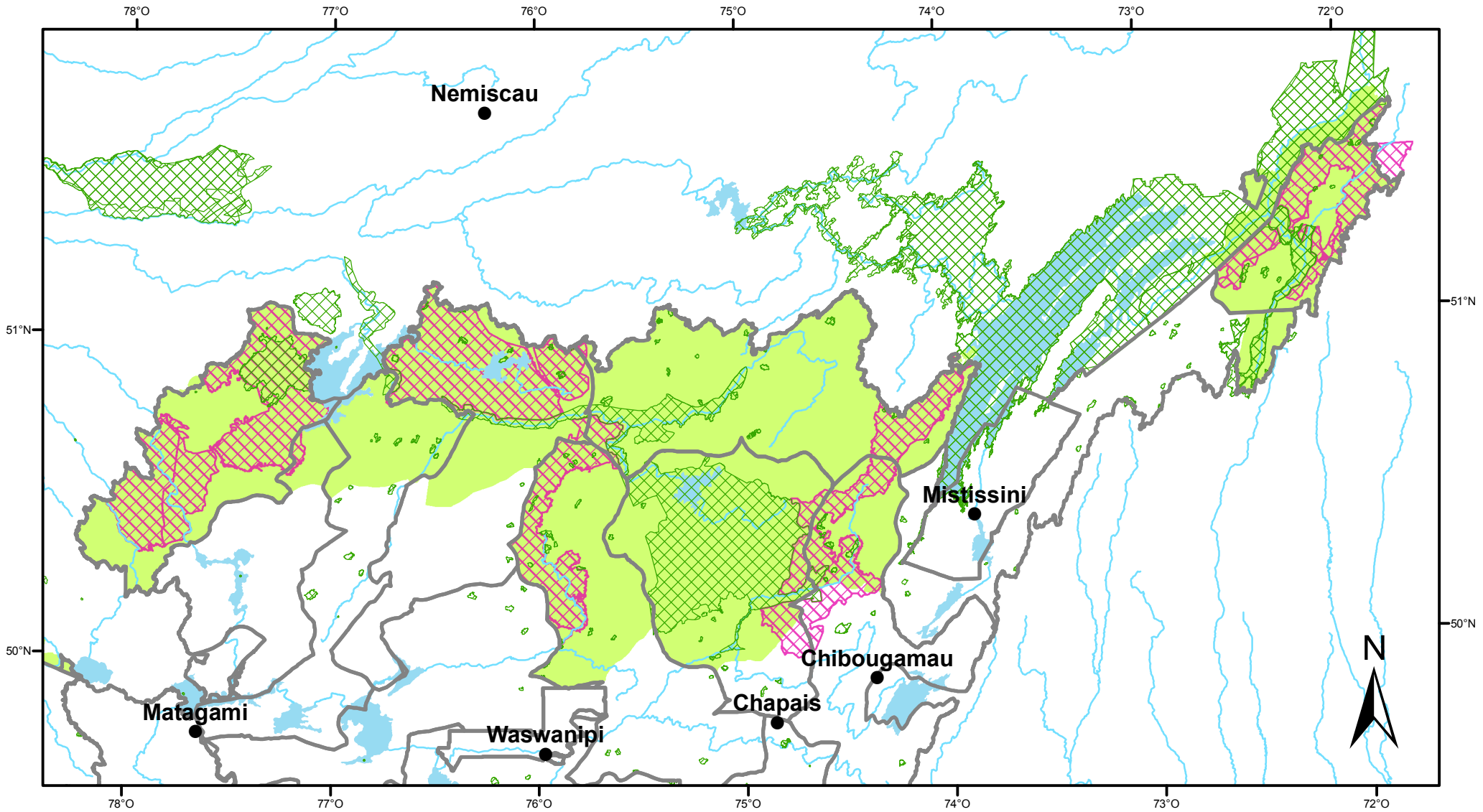
THE PRECAUTIONARY APPROACH DEVELOPED BY THE DGR-10


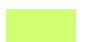



An area analysis was carried out in order to identify tracts of forest that are of strategic importance to the recovery of woodland caribou populations. The analysis criteria were the size of existing forest tracts, connectivity with the protected area network, the probability of caribou being present in these tracts, the actual caribou presence in these tracts (established by monitoring satellite collars), maintenance of regional north-south and east-west connectivity, and the protected areas proposed by Cree communities. The approach was developed with the collaboration of FSC certification applicants, as a means of supporting them in the certification process.



The precautionary approach is applicable to an area of more than 8,000 km² (Figure 1). Harvesting and road construction or improvement activities are therefore exempt. The approach is applicable immediately, and will remain in force until woodland caribou habitat management plans are implemented for the Nottaway, Assinica and Témiscamie herds. The precautionary approach will be taken into account by the Chief Forester when making the allowable cut calculations required to establish acceptable harvest levels that will ensure the sustainability of forest harvests in the area.

The DGR-10 firmly believes that this approach will allow for the preparation of caribou habitat management plans that, in all probability, will be able to maintain and recover woodland caribou populations in the area covered by Chapter 3 of the Peace of the Braves.

Precautionary approach for recovery of woodland caribou in the area covered by Chapter 3 of the Agreement concerning a new relationship between le Gouvernement du Québec and the Crees of Québec



-  Management units - Region 10
-  First priority recovery zone
-  Precautionary approach
-  Protected areas
-  Rivers

-  Lakes
-  Towns and communities

Metadata
 Map projection
 NAD 1983 MTM9

Production
 Ministère des Ressources naturelles
 Direction de l'expertise Énergie-Faune-Forêt-Mines-Territoire
 du Nord-du-Québec
 Gouvernement du Québec, September 2013

