

Collection Futura 2014 - 2017 : Special Finishes for Architecture



Collection Futura

English

Collection Futura is a range of special finishes for use on exterior architectural metal components. A favorite of architects for over 15 years. **Collection Futura** has been specified on numerous prestigious projects. Together with PeclersParis we have created 5 global themes and finishes.

Finishes shown on this card are made with AkzoNobel's **Interpon D2525** technology. **Interpon D2525** is an ultra durable powder coating, which meets the demanding weathering requirements of the leading industry specifications Qualicoat Class 2, GSB Master, and AAMA 2604-05, as well as BS EN 12206.

Collection Futura means your design will be both contemporary and long-lasting, keeping its stylish visage for many years to come.

When specifying or ordering, ensure you include the full product designation, e.g. Product: **Interpon D2525**; Shade: Venezia 2525; Product Code: YW004I.

French

La **Collection Futura** est une gamme de finitions spéciales destinée au revêtement d'éléments métalliques pour l'architecture extérieure. Plus de 15 ans de référencements sur de nombreux projets architecturaux à travers le monde donnent toute sa crédibilité à la **Collection Futura**. En collaboration avec l'Agence de Style Internationale PeclersParis, nous avons défini 5 thèmes et palettes de finitions, inspirés de la nature.

Les finitions présentées sur ce nuancier sont de la gamme Ultra-Durable **Interpon D2525**. D'une excellente résistance aux intempéries, les revêtements **Interpon D2525** satisfont parfaitement aux exigences des principales normes européennes pour l'architecture, parmi lesquelles Qualicoat Classe 2, GSB Master, AAMA 2604-05 et BS EN 12206.

La **Collection Futura** garantie à vos projets une haute durabilité, un style contemporain affirmé.

Lors de la prescription ou de la commande d'un produit de la **Collection Futura**, assurez vous de bien mentionner la désignation complète du produit. Par exemple. Produit: **Interpon D2525**, Teinte: Venezia 2525, Code produit: YW004I.

Chinese

Collection Futura 是一系列用于建筑外部金属组件的特殊装饰，备受建筑师青睐已超过15年。**Collection Futura** 已被指定用于无数知名企业的建筑项目中。我们和PeclersParis一道创造了五款具有国际主题的装饰。卡片上所展示的装饰采用AkzoNobel's **Interpon D2525** 技术制造而成。**Interpon D2525** 是一种超耐用粉末涂料，符合主导建筑行业规格中关于耐候性的严格要求，这些规格包括Qualicoat Class 2, GSB Master,

AAMA 2604-05以及 BS EN 12206。**Collection Futura** 的设计与时俱进且深远持久，多年来时尚风姿不减。当指定或者订购产品时，确保您指明产品的全部名称，如产品：**Interpon D2525**；阴影：Venezia 2525；产品代码：YW004I。

Greek

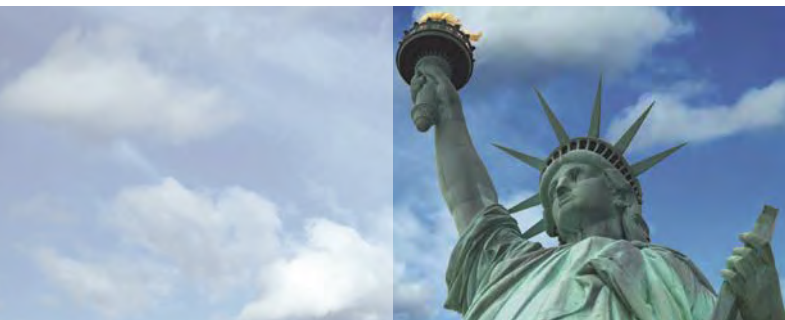
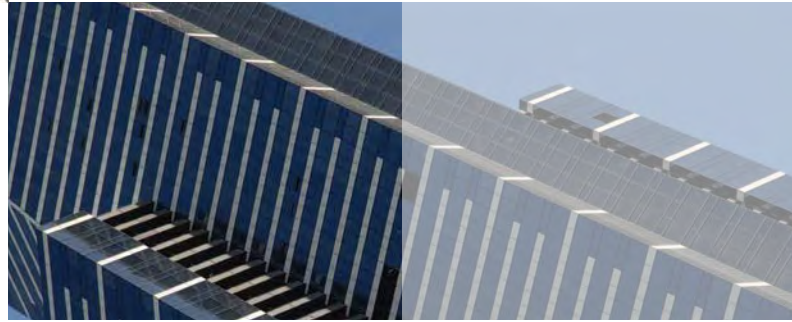
Η συλλογή **Futura** είναι μια σειρά ειδικών εφέ για τη βαφή εξωτερικών αρχιτεκτονικών μεταλλικών στοιχείων. Έχοντας κατακτήσει τη προτίμηση των αρχιτεκτόνων για περισσότερα από 15 χρόνια, η **Collection Futura**, έχει προδιαγραφεί σε πολλά, αρχιτεκτονικά έργα αναγνωρισμένου κύρους. Σε συνεργασία με την εξέχουσα εταιρία design PeclersParis, δημιουργήσαμε μαζί 5 διαφορετικές θεματικές ενότητες αποχρώσεων εμπνευσμένες από τη φύση.

Τα προϊόντα που παρουσιάζονται σε αυτό το χρωματολόγιο παράγονται με την τεχνολογία **Interpon D2525** της AkzoNobel. Η σειρά **Interpon D2525** αποτελείται από ηλεκτροστατικές πούδρες βαφής, που ανταποκρίνονται στις απαιτήσεις αντοχής σε καιρικές συνθήκες, που θέτουν οι κορυφαίες Ευρωπαϊκές προδιαγραφές Qualicoat Class 2 και GSB Master, το αμερικάνικο πρότυπο AAMA 2604-05, καθώς και το BS EN 12206.

Προδιαγράφοντας τη συλλογή **Futura**, η αισθητική της σχεδίασής σας θα είναι τόσο σύγχρονη όσο και διαχρονική, διατηρώντας την καλαισθητή όψη της για πολλά χρόνια.

Κατά την προδιαγραφή ή παραγγελία του χρώματος, βεβαιωθείτε ότι έχετε συμπεριλάβει την πλήρη περιγραφή του προϊόντος π.χ. Προϊόν: **Interpon D2525**, Απόχρωση: Venezia 2525, Κωδικός προϊόντος: YW004I.

The application parameters can affect the appearance of special finishes. Some slight variations in finish may occur. This document is not contractually binding.





German

Collection Futura ist eine SpecialEffect- Pulverlackserie für den Einsatz auf Metallbauteilen in der Architektur. Seit mehr als 15 Jahren gilt sie als erste Wahl bei vielen Architekten und wurde zur Beschichtung zahlreicher prestigeträchtiger Gebäude eingesetzt. In Zusammenarbeit mit der Trend-Agentur PeclersParis, haben wir fünf globale, durch die Natur inspirierte Themen und Finishes entwickelt.

Die Finishes in dieser Farbkarte wurden mit AkzoNobel's hochwitterungsbeständiger Serie **Interpon D2525** hergestellt.

Interpon D2525 sind hochwitterungsbeständige Pulverlacke. Neben der EN 12206 erfüllt **Interpon D2525** die gehobenen Anforderungen an die Bewitterungsstabilität der führenden europäischen Gütegemeinschaften, Qualicoat Class 2 und GSB Master, sowie den amerikanischen Standard AAMA 2604-05.

Collection Futura steht für modernes Design, dass auch nach mehreren Jahren an Attraktivität nicht verliert.

Bei Spezifikationen oder Bestellungen, geben Sie bitte die komplette Produktbezeichnung an, z.B. Produktserie: **Interpon D2525**, Farbton: Venezia 2525, Produkt-Code: YW0041.

Spanish

Collection Futura es una gama de acabados especiales para la arquitectura metálica exterior. Como favorita de los arquitectos durante más de 15 años, **Collection Futura** ha sido especificada en prestigiosos proyectos. Junto con la agencia PeclersParis de Francia, se han creado 5 temas globales y acabados inspirados en la naturaleza.

Los acabados presentados en esta carta han sido desarrollados con la tecnología de AkzoNobel **Interpon D2525**. **Interpon D2525** es un recubrimiento en polvo ultradurable que cumple las más altas especificaciones de durabilidad al exterior como Qualicoat clase 2, GSB Master, AAMA 2604-05, así como la norma BS EN 12206.

Collection Futura demuestra que sus diseños pueden ser contemporáneos a la vez que duraderos, manteniendo el estilo actual durante los próximos años.

Cuando se especifique, asegurar se incluya la descripción completa. Por ejemplo, **Interpon D2525**, Acabado: Venezia 2525, Código: YW0041.

Italian

La **Collezione Futura** è l'offerta di finiture speciali progettata per l'utilizzo su componenti metallici per architettura. Apprezzata dagli architetti per oltre 15 anni, la **Collezione Futura** è stata utilizzata con successo in progetti architettonici prestigiosi di tutto il mondo. Con la collaborazione dello studio PeclersParis presentiamo i 5 temi ispirati alla natura che identificano le nuove finiture.

Le finiture presenti in cartella sono formulate con tecnologia **Interpon D2525** di AkzoNobel. **Interpon D2525** è una gamma di vernici in polvere ad alta durabilità che risponde ai requisiti di resistenza agli agenti atmosferici secondo le principali omologazioni quali Qualicoat Classe 2, GSB Master, AAMA 2604-05 oltre a BS EN 12206.

La **Collezione Futura** abbina un design attuale alle alte performance di durabilità, assicurando a lungo nel tempo la qualità dei vostri progetti.

Al momento dell'ordine è consigliabile indicare la descrizione completa del prodotto: Gamma: **Interpon D2525**, Nome: Venezia 2525, Codice: YW0041.

Turkish

Collection Futura, dış ortamda kullanılan metal mimari komponentlerin boyanmasında kullanılan bir seridir. **Collection Futura**, mimarların tercihi olarak 15 yıldan uzun bir süredir bir çok önemli projede kullanılmıştır. PeclersParis ile birlikte doğadan esinlenen 5 global tema ve ürünler geliştirdik.

Bu kartelada sunulan **Collection Futura** renkleri AkzoNobel'in **D2525** teknolojisi ile üretilmiştir. **Interpon D2525**, Qualicoat Class 2, GSB Master, and AAMA 2604-05 ve BS EN 12206 gibi yüksek dayanım gerektiren endüstriyel spesifikasyonları karşılayan ultra dayanımlı toz boyadır.

Collection Futura ile dizaynınız modern ve uzun ömürlü olacak hemde tarz sahibi yüzeyini uzun yıllar koruyacaktır.

Bu ürünleri spesifikasyonlarınıza koyarken veya sipariş verirken ürün tanımlamasının tam olmasına dikkat ediniz, örneğin; Ürün: **Interpon D2525**, Renk: Venezia 2525, Ürün Kodu: YW0041.



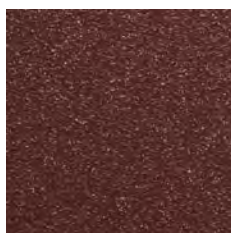
* GSB and Qualicoat approvals apply to certain products and locations.



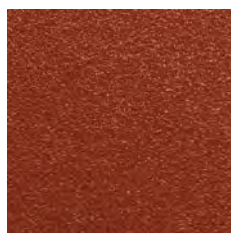
Ex Natura

We seek to reinvent Nature, both to better preserve it and take advantage of its virtues, in order to progress towards a more hedonistic vision of sustainability.

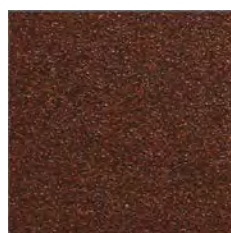
The palette of dense and pigmented tones centers on amber-y caramels, burnt reds and burgundies, chocolate browns and khaki greens, inspired by natural ingredients. Textures are satiny or ultra-glossy, matte or sanded.



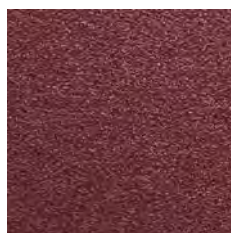
Rouge 2100 Sablé
YW371F



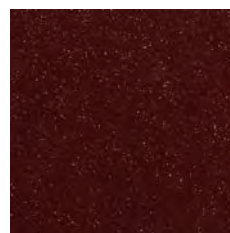
Orange 2100 Sablé
YW386I



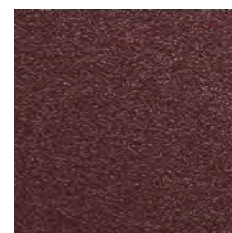
Mars 2525 Sablé
YX355F



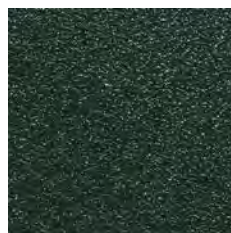
Rouge 2200 Sablé
YX310I



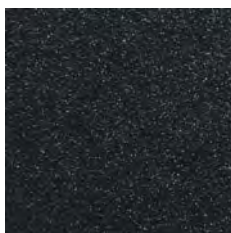
Himba 2525
YW274F



Rouge 2600 Sablé
YW380I



Vert 2500 Sablé
YW354F



Noir 2200 Sablé
YW360F



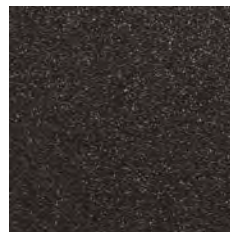
Noir 2300 Sablé
YW383I



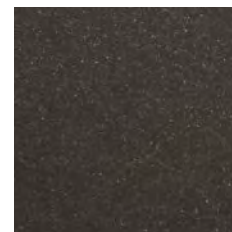
Harmattan 2525
YW003I



Vert 2100 Sablé
YW381I



Brun 2650 Sablé
YW366F



Platine 2525
YW284F



Visit your local Interpon website for further information or scan to order samples



Sublimed

In the midst of a high-paced and “glaring” environment, we aspire to peace and harmony.

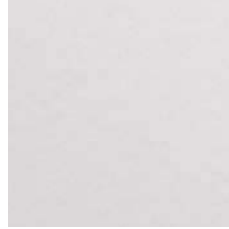
A calm palette of light pastels, tinged luminous whites, beiges and pale greens, extending to silvery or subtly pinkish grays. Textures go from satin to softly shiny, sequined or illuminated with pearlescent reflections.



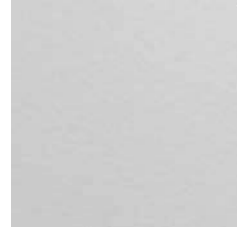
Otago 2525
YW263I



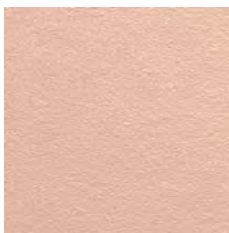
Shilin 2525
YW213G



Grazalema 2525
YW266F



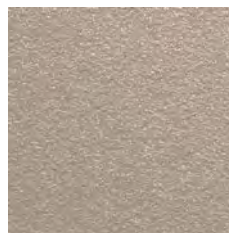
Faro 2525
YW268F



Atacama 2525 Sablé
YW385I



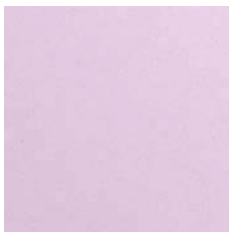
Sonora 2525 Sablé
YW379I



Gris 2800 Sablé
YW356F



Gris 2150 Sablé
YW365F



Kura 2525
YW265I



Yazd 2525 Sablé
YW370F



Silver 2525
YW206F



Pyrite 2525
YW207F



The codes on this card relate to the **Interpon D2525** series superdurable version of the shades. Colors indicative only. Actual product may differ slightly. Please request a sample.



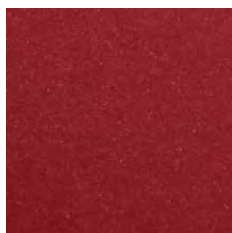
Bold Energy

Focus on the spectacular, boldly asserting one's identity to create strong sensations and stand out in a chaotic and complex world.

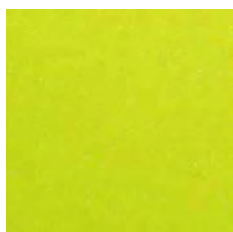
The palette is composed of bright high-energy tones: acid yellow and deep green, intense reds and blues, to pair with colored dark shades. Textures are lacquered, shiny or satiny, sequined or metallic, all the way to mirror reflections.



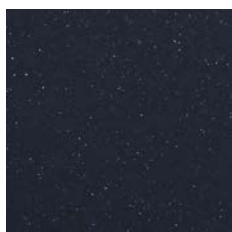
Mangalia 2525
YW269F



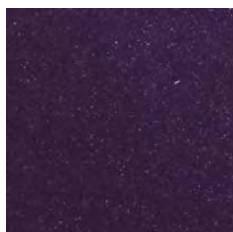
Bromo 2525
YW269I



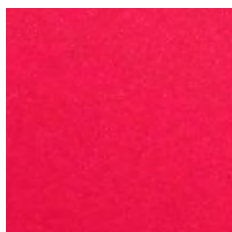
Tikal 2525
YW261I



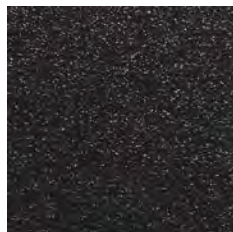
Canon 2525
YW279F



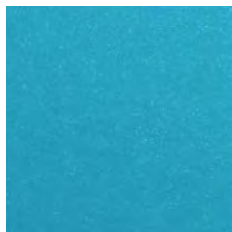
Venezia 2525
YW004I



Sinope 2525
YW264I



Noir 2100 Sablé
YW359F

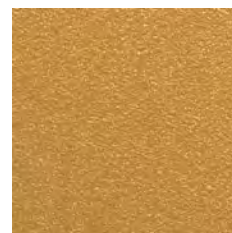


Kapalāi 2525
YW262I

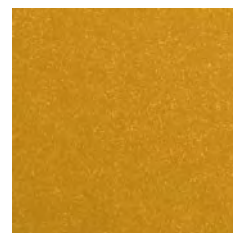
Explosive

In a move to counter the ambient moroseness and rigor, all out splendor and ostentation come forth, making way for a flamboyant and uninhibited modernity.

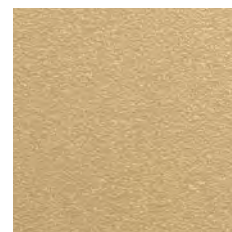
The palette pivots on metals: gold, brass, bronze, petrol black and copper, in intense shimmers and shot reflections. Textures are precious, from satiny to lustrous, or as shiny as mirrors.



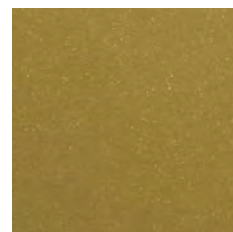
Ambre 2525 Sablé
Y2316F



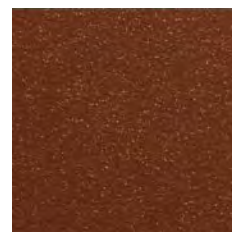
Gondar 2525
YW106I



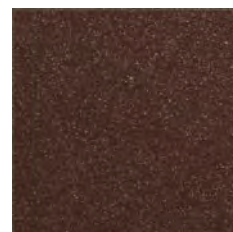
Yuma 2525 Sablé
Y2317F



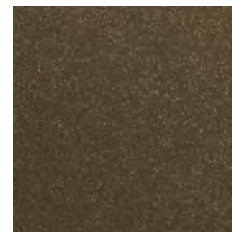
Jaisalmer 2525
YW273F



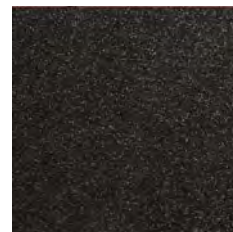
Ordos 2525 Sablé
YW387I



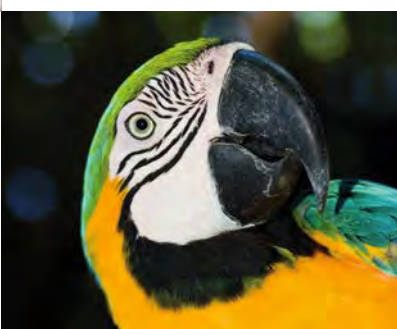
Patah 2525
YW267I



Bronze 2525
YW283F



Manganèse 2525
YW280F

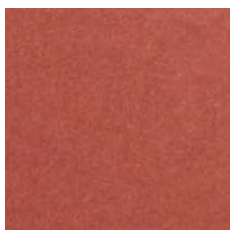




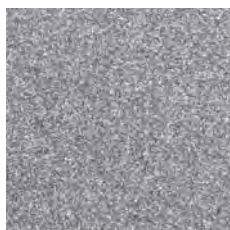
Soft Industry

As everyday life becomes increasingly virtual and abstract, we aspire to re-humanize our environment through materials and ingredients that have added texture and convey a sense of history.

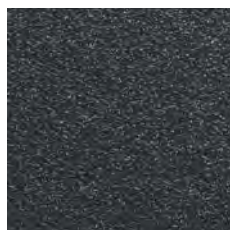
The palette is made of low-key, gently faded or subtly grayed nuances: beiges, dusty pink, patinated ocher, denim blues and eucalyptus green, khaki brown and charcoal gray, the new colored neutral tones. Textures go from matte to satiny, as if worn down and aged by time or the elements.



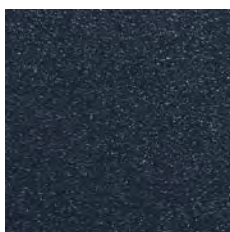
Etna 2525
YW107I



Starlight 2525 Sablé
YX353F



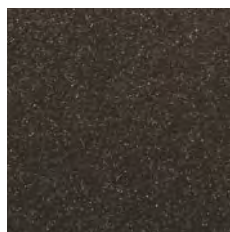
Bleu 2600 Sablé
YW361F



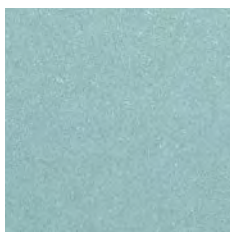
Bleu 2700 Sablé
YW353F



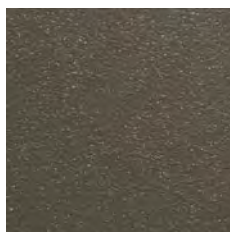
Valparaiso 2525
YW285G



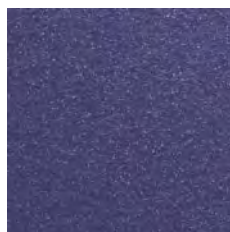
Cappadoce 2525
YW268I



Senoual 2525
YW266I



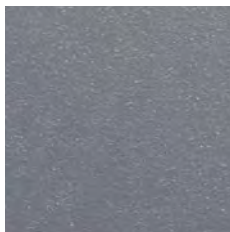
Gris 2700 Sablé
YW382I



San Francisco 2525
YW277F



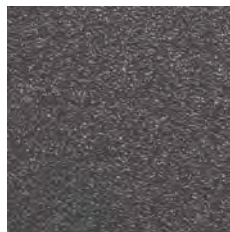
Vert 2300 Sablé
YW362F



Gris 2400 Sablé
YW373F



Gris 2500 Sablé
YW358F



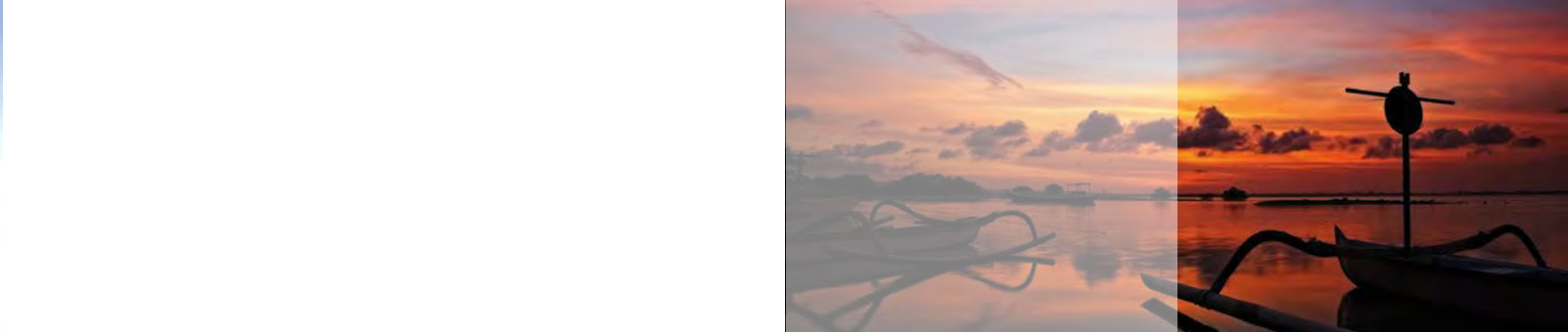
Gris 2900 Sablé
YW355F



Galet 2525
YX050F

For more information or to request a sample speak to your local representative or visit www.interpon.com





Local Websites

Australia
www.interpon.com.au

China
www.interpon.cn

Colombia
www.interpon.com.co

Czech Republic
Slovak Republic
www.interpon.cz

France
www.interpon.fr

Germany
www.interpon.de

Greece
www.interpon.gr

India
www.interpon.in

Italy
www.interpon.it

Mexico
www.interpon.mx

New Zealand
www.interpon.co.nz

Romania
www.interpon.ro

Russia
www.interpon.ru

South Africa
www.interpon.co.za

Spain
www.interpon.es

Sweden
www.interpon.se

Turkey
www.interpon.com.tr

United Arab Emirates
www.interpon.ae

United Kingdom
www.interpon.co.uk

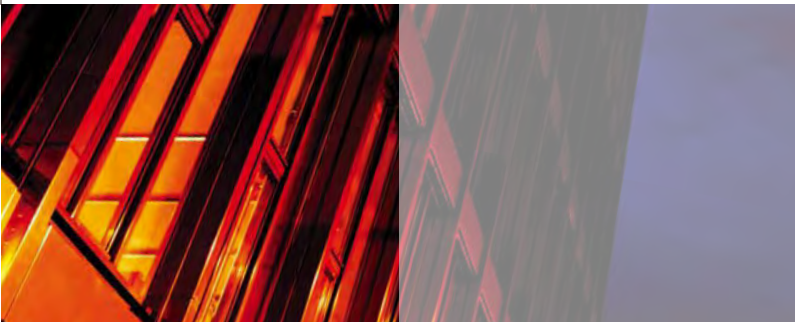
United States
www.interpon.us

For countries not listed, visit our
Global Website: **www.interpon.com**
or speak to your local representative



Follow AkzoNobel Powder
Coatings on Facebook

All products supplied & technical advice given are subject to the standard terms of sale of the AkzoNobel supplying company. Copyright ©2013 Akzo Nobel Powder Coatings Ltd. Interpon is a registered trademark of AkzoNobel. (Issue 1 - 7/2013). Printed in Italy.



Interpon[®]
powder coatings
EVERY COLOR IS GREEN