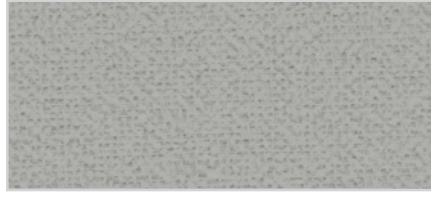


# Standard Vinyl

## Classics



**Kashi**, Silver Fan, KWC-19



**Linden**, Dover Gray, KWC-5



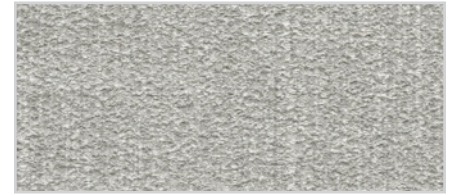
**Linden**, Rectory, KWC-3



**Lino**, Skylight, KWC-11

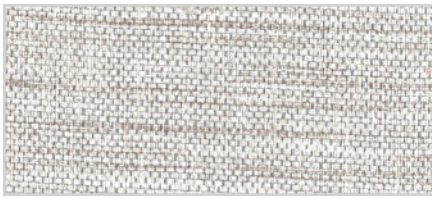


**Pantana**, Frost, KWC-34

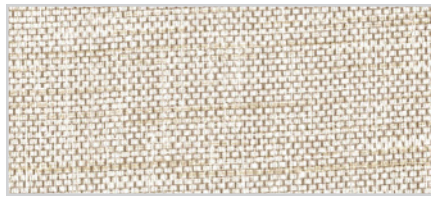


**Tahiti**, Surfside, KWC-17

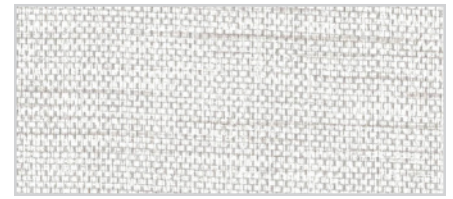
## Ramie



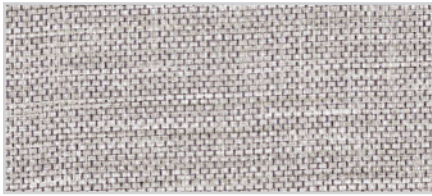
**Mesh**, KCS-1



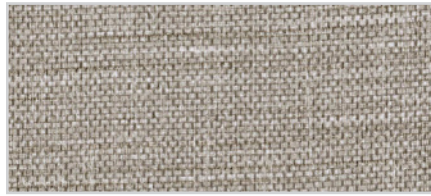
**Nettle**, KCS-2



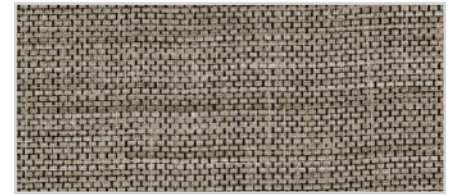
**Fused**, KCS-3



**Tangle**, KCS-4



**Spun**, KCS-5

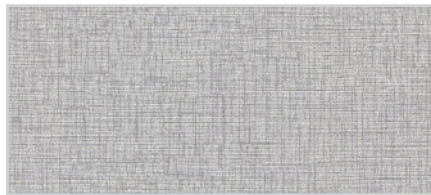


**Rolled**, KCS-6

## Orleans



**Inscription**, KCS-7



**Joie de Vivre**, KCS-8



**Zydeco**, KCS-9



**Fine Silver**, KCS-10



**Beignet**, KCS-11

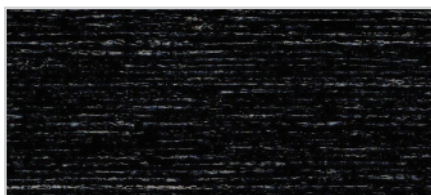


**French Quarter**, KCS-12

# Hurstbourne



Mink, KCS-13



Tuxedo, KCS-14



Truffle, KCS-15



Ionic Grey, KCS-16



Inkwell, KCS-17



Magnolia, KCS-18

# Bengal



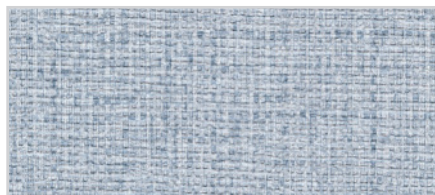
Cotton, KCS-19



Silk, KCS-20



Cloth, KCS-21



Stitch, KCS-22



Origin, KCS-23



Artisan, KCS-24

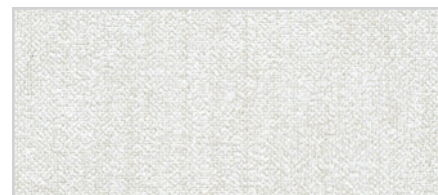
# Linden II



Linen, KCS-25



Bone, KCS-26



Eggshell, KCS-27

# Lino



Hemline, KCS-28



Clothesline, KCS-29



Draperie, KCS-30

# Koroseal®

3875 Embassy Parkway  
Fairlawn, OH 44333  
855.753.5474 · koroseal.com

## PATTERNS

Kashi · Linden · Patana · Tahiti  
Ramie · Orleans · Hurstbourne  
Linden II · Lino · Bengal

	<b>US UNITS</b>	<b>METRIC UNITS</b>
<i>Total Weight</i>	20.0 oz. PLY 13.3 oz. PSY	620 g PLM 451 g PSM
<i>Roll Width</i>	52" – 54"	132 cm – 137 cm
<i>Backing</i>	Woven	
<i>Tensile (Minimum)</i>	50 x 55 lb <sub>f</sub>	222 x 245 N
<i>Tear (Minimum)</i>	25 x 25 lb <sub>f</sub>	111 x 111 N
<i>Federal Spec</i>	CCC-W-408D, Type II	
<i>WA Spec.</i>	WA-101, Type II	
<i>ASTM F-793</i>	Category V, Type II	
<i>Fire Testing</i>	NFPA 101® Life Safety Code® NFPA 255 (ASTM E-84, CAN S102M) Tunnel Test <sup>1</sup> Class A Rating Flame Spread – 10 Smoke Developed – 5 NFPA 286 Corner Burn Test <sup>2</sup> Meets requirements for Flame Spread, Smoke Developed and Flashover	
<i>CE Certification</i>	EU Classification in accordance with EN 15102:2007 + A1:2011	
<i>Indoor Air Quality offices</i>	California 01350 – Meets emission requirements for schools and offices	
<i>Repeat</i>	N/A	
<i>Vertical</i>	N/A	
<i>Horizontal</i>	N/A	
<i>Nomimal Pattern Width</i>	51"	
<i>Match Information</i>	Reverse Hang, Random Match – all patterns except: Linden II: Random Match, Non-Reverse Hang	

1. When applied to GRC board with A-848-B adhesive

2. When applied to 5/8" Type-X-Gypsum board with A-848-B adhesive