

Upgrade Vinyl

White Creek



Ash, KCW-1



Jacobean, KCW-2



Mocha, KCW-3



Prairie, KCW-4



Rustic, KCW-5



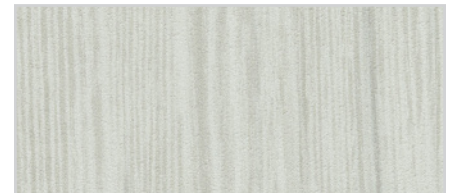
Sedona, KCW-6



Slate, KCW-7

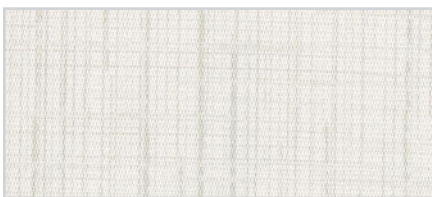


Vintage, KCW-8



Willow, KCW-9

Lineage



Origin, KCU-1



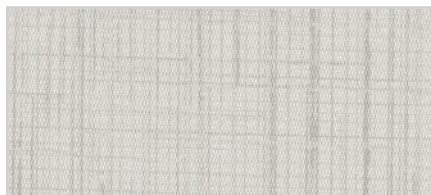
Heir, KCU-2



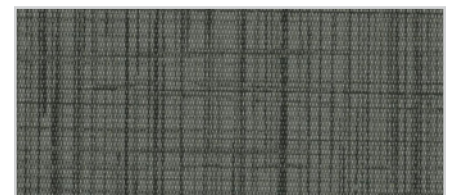
Heritage, KCU-3



Generation, KCU-4



Pedigree, KCU-5



Descent, KCU-6

Destiny



Illusion, KCU-7



Mottled, KCU-8



Opalescence, KCU-9



Enchanted, KCU-10

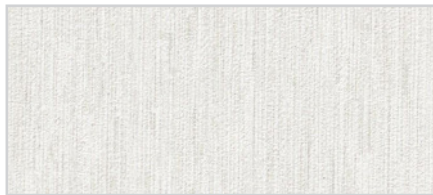


Melded, KCU-11



Fascination, KCU-12

Galerie



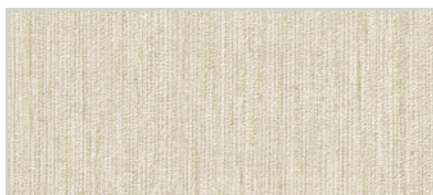
Earnest, KCU-13



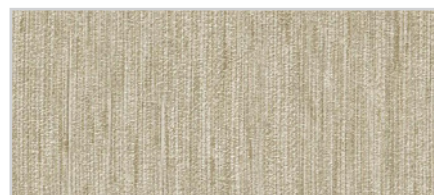
Baroness, KCU-14



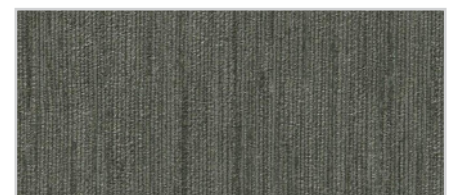
Poplar, KCU-15



Hope, KCU-16



Expectation, KCU-17



Smoke, KCU-18

Koroseal®

3875 Embassy Parkway
Fairlawn, OH 44333
855.753.5474 · koroseal.com

PATTERNS

White Creek · Lineage
Destiny · Galerie

	US UNITS	METRIC UNITS
<i>Total Weight</i>	20.0 oz. PLY 13.3 oz. PSY	620 g PLM 451 g PSM
<i>Roll Width</i>	52" – 54"	132 cm – 137 cm
<i>Backing</i>	Woven	
<i>Tensile (Minimum)</i>	50 x 55 lb _f	222 x 245 N
<i>Tear (Minimum)</i>	25 x 25 lb _f	111 x 111 N
<i>Federal Spec</i>	CCC-W-408D, Type II	
<i>WA Spec.</i>	WA-101, Type II	
<i>ASTM F-793</i>	Category V, Type II	
<i>Fire Testing</i>	NFPA 101® Life Safety Code® NFPA 255 (ASTM E-84, CAN S102M) Tunnel Test ¹ Class A Rating Flame Spread – 10 Smoke Developed – 5 NFPA 286 Corner Burn Test ² Meets requirements for Flame Spread, Smoke Developed and Flashover	
<i>CE Certification</i>	EU Classification in accordance with EN 15102:2007 + A1:2011	
<i>Indoor Air Quality offices</i>	California 01350 – Meets emission requirements for schools and offices	
<i>Repeat</i>		
<i>Vertical</i>	N/A	
<i>Horizontal</i>	N/A	
<i>Nomimal Pattern Width</i>	51"	
<i>Match Information</i>	Reverse Hang, Random Match – all patterns except: Lineage: Random Match, Non-Reverse Hang	

1. When applied to GRC board with A-848-B adhesive

2. When applied to 5/8" Type-X-Gypsum board with A-848-B adhesive