

World Class Cannabis Seeds

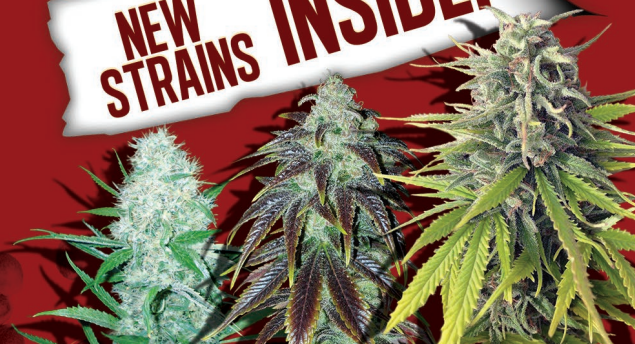


PRODUCT GUIDE PRODUCT GUIDE PRODUCT GUIDE PRODUCT GUIDE



Since 2005

NEW STRAINS INSIDE!



REGULAR FEMINIZED AUTO-FLOWERING LOW-FLYER CBD / MEDICAL



contents



"I think people need to be educated to the fact that marijuana is not a drug. Marijuana is an herb and a flower. God put it here. If He put it here and He wants it to grow, what gives the government the right to say that God is wrong?"

- Willie Nelson quote on Marijuana



"We shall, by and by, want a world of hemp more for our own consumption."

- John Adams quote on Hemp



"Why is marijuana against the law? It grows naturally upon our planet. Doesn't the idea of making nature against the law seem to you a bit . . . unnatural."

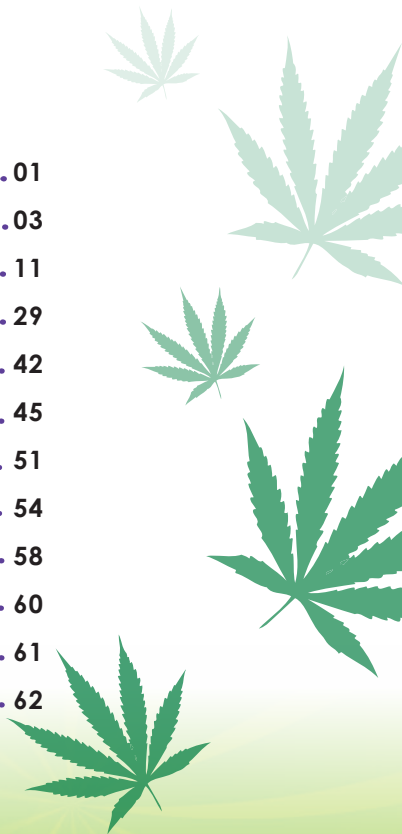
- Bill Hicks quote on Marijuana



"Hemp is of first necessity to the wealth & protection of the country."

- Thomas Jefferson quote on Hemp

crop king	01
regular.....	03
feminized	11
auto-flowering fem	29
low-flyer fem	42
high cbd	45
mix and match	51
germinating seeds	54
glossary	58
visit our store	60
index	61
stuff.....	62





featured in:



crop king

World Class Cannabis Seeds

Established in 2005, Crop King Seeds has been perfecting the genetics of the cannabis plant for medical and commercial growers seeking maximum results in their levels and harvest size.

From classic strains to new age hybrids, our seeds are ideal for beginners and advanced growers wanting the best from their crop.



HEAD OFFICE



CUSTOMER SERVICE



RACES TO BE WON



"Make the most you can of the Indian Hemp seed and sow it everywhere."

- George Washington quote on Hemp



"It really puzzles me to see marijuana connected with narcotics . . . dope and all that crap. It's a thousand times better than whiskey - it's an assistant - a friend."

- Louis Armstrong quote on Marijuana



"That is not a drug. It's a leaf."

- Arnold Schwarzenegger on Marijuana



"I now have absolute proof that smoking even one marijuana cigarette is equal in brain damage to being on Bikini Island during an H-bomb blast."

- Ronald Reagan quote on Marijuana

what is regular

When marijuana seeds are classified as regular it means that the seeds when germinated can produce either male or female plants. It is expected that a batch of regular seeds can have about 50% male and 50% female so the tendency to have male together with female plants is about even. However, the sex of marijuana plants cannot be determined with certainty until they start to flower.

When the flowering stage starts, the male marijuana plants will start to pollinate the female plants and this will lead to producing seeds instead of the desired buds.

Most marijuana growers do not want the female plants to be fertilized so they immediately take out the male plants once their sex is identified during the initial stage of flowering. If the female marijuana plants are not fertilized there will be no seeds in the buds and the THC potency is higher.



CROP KING MOBILE





Blueberry



| \$40
| \$70
| \$120



"Original Legend"

Type:	Indoor / Outdoor
Growing:	Easy / Moderate
Flowering Time:	8 - 9 weeks
Indica/Sativa:	75% Indica
Effect:	Relaxing High
THC:	Moderate

Blueberry is a well known classic and former winner of the Cannabis Cup. This indica is known for its colorful fan leaves and purplish bud that produce a fruity flavor and taste. This is an excellent strain for pain relief and relaxation.



Afghani



| \$40
| \$70
| \$120



"Original Landrace"

Type:	Indoor / Outdoor
Growing:	Beginner
Flowering Time:	9 weeks
Indica/Sativa:	Mainly Indica
Effect:	Landrace High
THC:	High Extreme

This original landrace strain gets its name from its country of origin, Afghanistan. First discovered high in the mountains, this strong Indica provides a euphoric and relaxing stone. High in THC, this variety is perfect for cloning, cross-breeding and large-volume production. This is a well-known classic and a must-have for new or experienced growers.





Haze Xtreme



| \$40



| \$70



| \$120



"Large Yields"

Type:	Indoor / Outdoor
Growing:	Easy to Moderate
Flowering Time:	8 to 10 weeks
Indica/Sativa:	Mostly Sativa
Effect:	Body & Head High
THC:	Strong Yet Aware

We took the popular Haze and made it Xtreme with increased psychedelic effects and a potent Sativa high. Known for smaller dense buds and moderate sized harvests Haze Xtreme will give you a body and head high allowing you to excel at daily activities while maintaining creative conversations.



Original Skunk



| \$40



| \$70



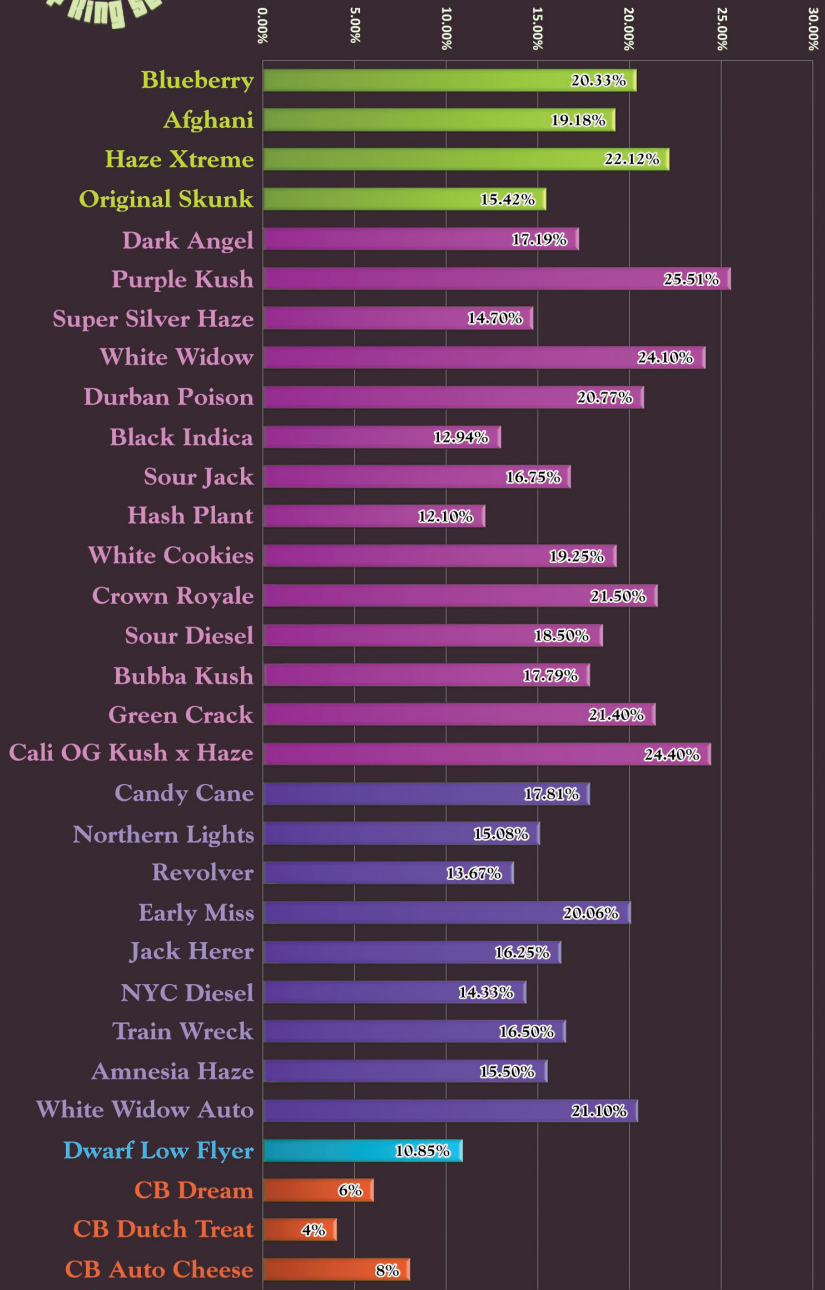
| \$120

"The True Classic"

Type:	Indoor / Outdoor
Growing:	Easy - Moderate
Flowering Time:	8 - 10 weeks
Indica/Sativa:	50% Blend
Effect:	Body Buzz, Medical
THC:	Moderate

Skunk is back exclusively from Crop King Seeds. Using original genetics from the 70s, this classic comes complete with its famous aroma and potency. Suitable to all levels of growers from beginner to experienced. Original Skunk is perfect for cross-breeding and combining with other varieties to make unique strains like "Skunk-Widow".





■ Regular
■ Feminized
■ Auto Flower Fem
■ Dwarf Auto Fem
■ High CBD

Crop King Strains THC Chart



CONCERTS



OUTDOOR 420 EVENTS



420 FESTIVALS



CROP KING SEEDS SHAKRZ



TRAILER PARK BOYS



MEDICAL MARIJUANA

The Growth of the Industry

\$8.9 BILLION

Potential value of the national medical marijuana market in 5 years.

INDUSTRIES CREATED BY MEDICAL MARIJUANA

Wholesale marijuana cultivation and retail distribution.

Marijuana infused products eg., consumables, tinctures and salves.

Development and sales of smoking and non-smoking paraphernalia.

\$1.7 BILLION

Current market value for medical marijuana.

24.8 MILLION

Patients eligible for medical marijuana under current state laws.

HURDLES

34%

Of medical marijuana business owners cite regulatory compliance as the number one challenge.

24%

Of medical marijuana dispensaries cite securing financing as the most pressing business challenge.

what is feminized



Feminized marijuana seeds are the result of a scientific process meant to produce only female seeds. The process involves forcing female plants to produce pollen sacs which are then used to pollinate other female marijuana plants. When a female plant is forced to produce pollen sacs, it can be expected that the pollen coming out of it will have female genes and when matched with another female, then it will have the natural tendency to produce only female seeds.

Growing only female plants is one of the surest ways to ensure that they will remain sensimilla because of the absence of male plants in the growing area. There are several approaches to making feminized marijuana seeds such as the Colloidal Silver Spray, Rodelization and many others.



MODELS

TOMMY AND THE KING





feminized

Dark Angel



| \$55

| \$95

| \$190



"Sativa / Indica Blend"

Type:	Indoor / Outdoor
Growing:	Easy
Flowering Time:	8 weeks
Indica/Sativa:	50% Indica / Sativa
Effect:	Full Body Stone
THC:	Medium THC

Dark Angel balances both Indica and Sativa characteristics while making it easy for the novice grower. An excellent strain to chill at home or for moderate pain relief while allowing for mind exploration. The leaves will be dark green and minimal, while the nuggets will be compact with THC crystals and aromas of coffee and nutmeg.



Purple Kush



| \$60

| \$110

| \$200

"California Classic"

Type:	Indoor / Outdoor
Growing:	Easy to Moderate
Flowering Time:	8 to 10 weeks
Indica/Sativa:	75% Indica
Effect:	Pure Indica High
THC:	Extreme Indica

Purple Kush is world renowned for its purple leaves and strong smoky taste combined with a very high THC level. The plant is short in stature with dense buds riddled with thin white and orange hairs. Purple Kush is a durable and versatile plant with frosty buds and an earthy pungent aroma that will take you on a ride outside of your body.



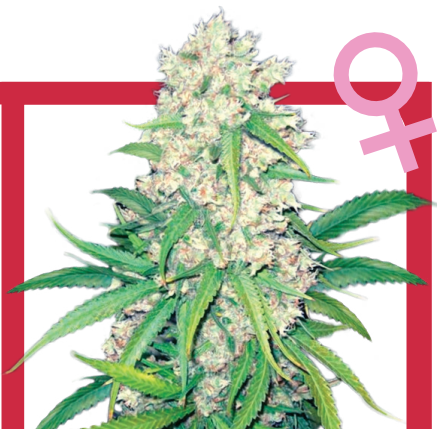


feminized

Super Silver Haze



5 SEEDS | \$60
10 SEEDS | \$100
25 SEEDS | \$190



"Indoor Sativa"

Type:	Indoor Only
Growing:	Moderate
Flowering Time:	10 weeks
Indica/Sativa:	75% Sativa
Effect:	Creative High
THC:	Moderately Strong

The only strain that has won back-to-back Cannabis Cups has been bottled up and cloned for everyone to have access to. This plant will grow quite high which can result in large yields if you desire. A complete body stone that results in creative thinking and intellectual conversations makes this a strain to share with your friends.



White Widow



5 SEEDS | \$60
10 SEEDS | \$90
25 SEEDS | \$185

"Strong & Powerful"

Type:	Indoor / Outdoor
Growing:	Easy
Flowering Time:	8 weeks
Indica/Sativa:	60% Indica
Effect:	Strong High
THC:	Moderately Strong

Our feminized White Widow is a former Cannabis Cup Winner that is high in THC and CBD. Known for white trichome crystals and orange hairs that develop at the end of its flowering stage. Easy to grow, a great yielder and perfect for cloning. Caution the high from White Widow is not for beginners.





feminized

Durban Poison



| \$55



| \$95



| \$190



"Strong Original Uplifting Sativa"

Type:	Indoor / Outdoor
Growing:	Moderate
Flowering Time:	10 weeks
Indica/Sativa:	60% Sativa
Effect:	Psychedelic Effect
THC:	Moderate - High

This original strain was brought to us in the 90s from Africa. After perfecting the feminization process in our European labs, we can now offer you this Sativa-dominant beauty. Maintain energy, happiness and creativity with this sticky, trichome-rich girl.



Black Indica



| \$60



| \$90



| \$185

"High CBD & Yield"

Type:	Indoor / Outdoor
Growing:	Easy to Moderate
Flowering Time:	8 weeks
Indica/Sativa:	80% Indica
Effect:	Relaxed High
THC:	Moderate

Our purest Indica strain originates from Afghanistan and is ideal for relaxing and social activities. A short and stinky plant with wide leaves that is ideal for medical purposes such as insomnia and mild pain relief. Moderate level of THC and a relaxed high make this fast finishing Indica ideal for beginners.





feminized

Sour Jack



| \$55



| \$95



| \$190



"Two of the Best Sativas Crossed"

Type:	Indoor / Outdoor
Growing:	Easy
Flowering Time:	9 weeks
Indica/Sativa:	70% Sativa
Effect:	Indica Body Buzz
THC:	Moderate - High

Two famous strains came together (Sour Diesel & Jack Herer) to create our Sour Jack. Mainly sativa with a hint of Indica, Crop King Seed's Sour Jack is a Sativa cross that could be the best in the world. Uplifting in spirit and body, she will knock you on your ass.



Hash Plant



| \$55



| \$95



| \$190

"Original From 1984"

Type:	Indoor / Outdoor
Growing:	Easy - Moderate
Flowering Time:	8 weeks
Indica/Sativa:	80% Indica
Effect:	Strong & Long lasting
THC:	Low - Moderate

Compact and resinous this 8 week strain gives a hashish smell when cured. An 80% Indica dominant strain that gives a narcotic body high, perfect for patients who suffer from migraines or arthritis. Hash plant is a phenomenal strain for hashish due to its resinous content.





feminized

Crown Royale



5 SEEDS | \$60
 10 SEEDS | \$110
 25 SEEDS | \$200



"Our Signature Strain"

Type:	Indoor / Outdoor
Growing:	Moderate
Flowering Time:	9 weeks
Indica/Sativa:	70% Indica
Effect:	Strong Indica
THC:	Strong

Our signature strain is a full bodied, bushy Indica that is a great yielder, easy to grow and strong in both CBD and THC levels. An overall "Best Of" in all categories, the newest addition to our famous strains was specifically bred for commercial, home and medical growers. Crown Royale is a combination of Blueberry and Purple Kush bred in North America.



White Cookies



5 SEEDS | \$60
 10 SEEDS | \$110
 25 SEEDS | \$200

"Ultimate Hybrid"

Type:	Indoor / Outdoor
Growing:	Easy - Moderate
Flowering Time:	9 weeks
Indica/Sativa:	60% Indica
Effect:	Indica Body Rush
THC:	Moderate - High

We took the world's two most popular strains of White Widow & Girl Scout Cookies and created the world's best Hybrid with "White Cookies". A knockout in high THC levels, white crystals and a short flowering time of only 8 weeks this Indica dominant hybrid has characteristics of both parents. Fun and easy to grow, flourishes in Indoor grows.





feminized

Sour Diesel



5 SEEDS | \$60

10 SEEDS | \$110

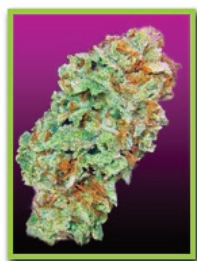
25 SEEDS | \$200



"Mental Energy"

Type:	Indoor Preferred
Growing:	Moderate
Flowering Time:	8 - 9 weeks
Indica/Sativa:	Sativa Hybrid
Effect:	Spiritual Uplifting
THC:	Medium - High

Quite possibly the most popular strain in the world, Sour Diesel's reputation as a pungent, fast-acting fuel is legendary. This Sativa goes straight to the head, imparting a cerebral, energetic high. Dank buds smell of citrus fruit and open diesel. This plant grows quickly, particularly in the first 3 weeks of flowering, and is an excellent choice for "sea of green" gardens.



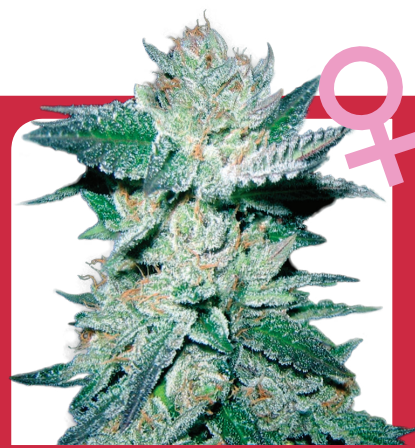
Bubba Kush



5 SEEDS | \$60

10 SEEDS | \$110

25 SEEDS | \$200



"Commercial Yielder Hybrid"

Type:	Indoor / Outdoor
Growing:	Easy - Moderate
Flowering Time:	9 weeks
Indica/Sativa:	Sticky Indica
Effect:	Relaxing High
THC:	Medium

A Bubble Gum mother was crossed with a Pure Kush male to produce this famous Indica hybrid. Lose track of time as earthy and sweet flavours induce deep waves of full-body stone. This easy-to-grow strain relieves pain and eliminates insomnia. Bushy plants yield thick, sticky buds after 9 weeks of flowering.





feminized

Cali OG Kush x Haze (Sativa)



| \$65

| \$120

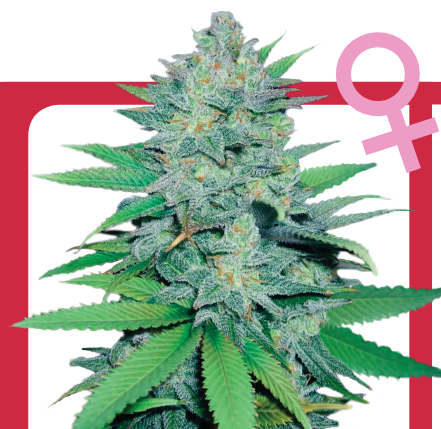
| \$220



"OG Kush crossed with a Sativa"

Type:	Indoor / Outdoor
Growing:	Moderate
Flowering Time:	9 - 10 weeks
Indica/Sativa:	70% Sativa
Effect:	Sativa
THC:	Extreme High

Crop King Seeds traveled to Northern California to find a Dominant OG Kush and crossed it with our Amnesia Haze, creating a dominant uplifting Sativa and the famous characteristics you get from an OG Kush Indica. A new beauty exclusive only from "The King".



Green Crack



| \$65

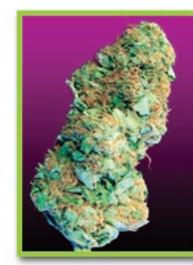
| \$120

| \$220

"Potent Powerhouse"

Type:	Indoor / Outdoor
Growing:	Easy
Flowering Time:	9 to 10 weeks
Indica/Sativa:	Mainly Indica
Effect:	High Body Buzz
THC:	Very High

Skunk No 1 crossed with a landrace strain, Green Crack provides an intense body high guaranteed to have you coming back for more. Citrusy-sweet with hints of lemon and spice, a little goes along way with this smooth, spacey strain. Robust plants grow quickly and often require trellising. Expect strong yields with flowers maturing in 9 weeks.





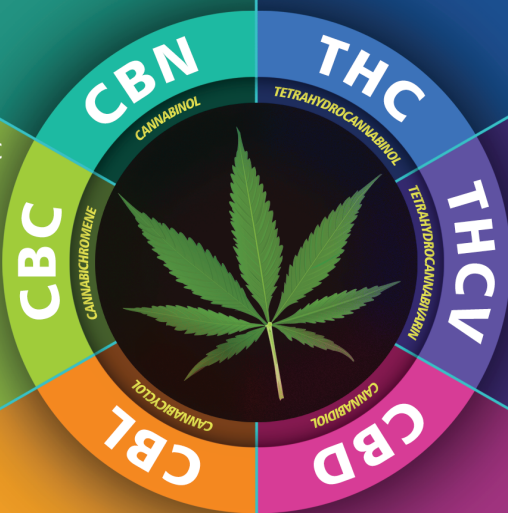
CANNABINOIDS

Marijuana contains various cannabinoids that are compounds concentrated in the glandular trichomes of the plant flowers.

A psychoactive that is a mild cannabinoid that appears from the degradation of THC. There is little to no CBN in a newly grown plant.

The most commonly known cannabinoid in cannabis is THC. Widely abundant in female plants, THC is the main contributor to the psychoactive effects users feel when ingested.

Almost identical to THC in the structure of cannabinoids. CBC plays a role in anti-inflammatory and anti-viral effects. It is not scheduled as a psychotropic substance.



An unscheduled psychoactive that originated in Africa and Southern Asia. This cousin to THC is currently being researched to treat metabolism conditions.

A non-psychoactive cannabinoid that is unscheduled under the treaty of narcotics.

The cannabinoid with the most medical properties is CBD. A non-psychoactive extract that is known to stop seizures, arthritis and heart disease.

3 TYPES OF CANNABINOIDS

HERBAL: OCCURS NATURALLY IN CANNABIS PLANTS

ENDOGENOUS: PRODUCED NATURALLY BY HUMANS AND OTHER ANIMALS

SYNTHETIC: CANNABINOIDS PRODUCED IN A LABORATORY

* Different blends of cannabinoids account for the different qualities of intoxication produced by the various different strains of the cannabis plant. The intensity of the high will depend primarily on the amount of delta-9 THC present and the ingestion method chosen.

IDENTIFYING COMMON CANNABIS TERPENES

WHAT YOU SMELL = HOW YOU'LL FEEL

Terpenes are what you smell, and knowing what they are will deepen your appreciation of cannabis whether you're a medical patient or recreational consumer.

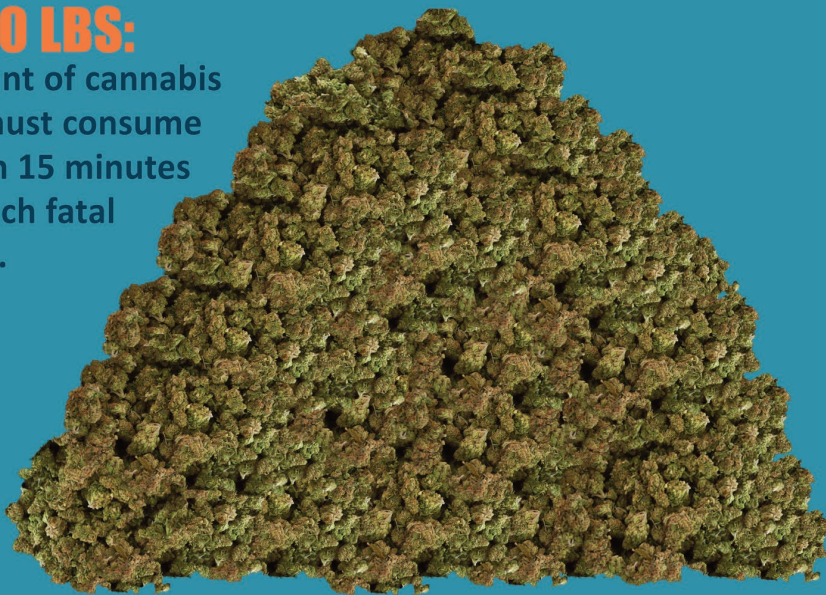
TERPENE	ALPHA-PINENE BETA-PINENE	MYRCENE	LIMONENE	ACARYOPHYLLENE	LINALOOL
	PINE FOUND IN: PINE, DILL, PARSLEY, BASIL, ROSEMARY	MUSKY, EARTHY, CITRUS HINTS FOUND IN: MANGO, THYME, LEMONGRASS, HOPS	CITRUS FOUND IN: JUNIPER, ROSEMARY, FRUIT RINDS, PEPPERMINT	SPICY, WOODY, PEPPERY, CLOVE FOUND IN: BLACK PEPPER, CLOVE, COTTON	FLORAL, CANDY, CITRUS FOUND IN: LAVENDER
	ALERTNESS, EUPHORIA, CREATIVITY, MEMORY RETENTION	COUCHLOCK, SEDATION, RELAXATION, BODY HIGH	ELEVATED MOOD, STRESS RELIEF	NO NOTED EFFECTS	ANXIETY RELIEF, SEDATION
	ASTHMA, ANTISEPTIC	ANTIOXIDANT, PAIN, MUSCLE TENSION, SLEEPLESSNESS, ANTI-CARCINOGENIC	GALLSTONES, GASTROPROTECTIVE, HEARTBURN, ANTI-FUNGAL, DEPRESSION	GASTROPROTECTIVE, ANTI-INFLAMMATORY, ARTHRITIS, ULCERS	ANTI-ANXIETY, ANTI-CONVULSANT, ANTI-DEPRESSANT, ANTI-ACNE
	JACK HERER, TRAINWRECK, BUBBA KUSH, CHEM DAWG, SUPER SILVER HAZE	PURE KUSH, EL NIÑO, HIMALAYAN GOLD, SKUNK #1, WHITE WIDOW	OG KUSH, SUPER LEMON HAZE, JACK THE RIPPER, LEMON SKUNK	BIG BANG, DAMN SOUR, GREAT WHITE SHARK, ICE DREAM	G-13, LAVENDER, AMNESIA HAZE, LA CONFIDENTIAL



MARIJUANA VS TOBACCO AND ALCOHOL

1,500 LBS:

Amount of cannabis you must consume within 15 minutes to reach fatal levels.



440,000:

Annual Deaths From Tobacco



46,000:

Annual Deaths From Alcohol



"When you smoke the herb, it reveals you to yourself."

- Bob Marley



0:

Annual Deaths From Marijuana

ZERO!

what is

auto-flowering feminized

Auto-flowering marijuana seeds are produced when a sativa, indica, or both are crossed to a ruderalis variety. Ruderalis is a marijuana variety that possess auto-flowering characteristic which is not found in both sativa and indica. When ruderalis genes are infused to a sativa or an indica, the cross produces a hybrid marijuana strain that flowers automatically without the need of light cycles.

Auto-flowering marijuana plants have their own biological clock and therefore not affected by light and dark cycles. This means that they can be grown any time of the year and the grower can grow and harvest several times a year depending on the auto-flowering strain. They usually have very short vegetative stage and also grow to a short height making them easy and convenient to grow especially for new growers who prefer the guerilla type of growing.





auto-flowering feminized

Candy Cane Auto-flower



| \$55



| \$95



| \$190



"Sweet Tasting"

Type:	Indoor / Outdoor
Growing:	Easy - Moderate
Flowering Time:	7 weeks
Indica/Sativa:	60% Indica, 30% Sativa, 10% Ruderalis
Effect:	Long-lasting body buzz
THC:	Moderate - High

Fruity and sour flavor, this 7-week strain is one of our sweetest tasting auto-flowering strains. Super easy to grow, this strain is a very strong, long-branching plant with a moderately high yield. An exotic sweet tasting strain with a long lasting and very euphoric high.



Northern Lights Auto-flower



| \$55



| \$95



| \$190

"Cannabis Cup Winner"

Type:	Indoor / Outdoor
Growing:	Easy to Moderate
Flowering Time:	8 weeks
Indica/Sativa:	70% Indica, 20% Sativa, 10% Ruderalis
Effect:	Stoney High
THC:	Moderate - High

One of our most famous strains is Northern Lights Auto Flowering. This 8 week compact, fast and very dense strain is a favourite amongst many. With frosted buds possess a honey-musk aroma blended with an earthy Afghani undertone. Low odor and easy to grow this strain is a favourite for both connoisseur quality and commercial quantity.





auto-flowering feminized

Revolver Auto-flower



| \$55

| \$95

| \$190



"Easy To Grow"

Type:	Indoor / Outdoor
Growing:	Easy to Moderate
Flowering Time:	7 weeks
Indica/Sativa:	70% Indica, 20% Sativa, 10% Ruderalis
Effect:	Stoney yet High - Full Body Buzz
THC:	Low - Moderate

Auto-Flowering and easy to grow, thriving in both outdoor and indoor settings. Its medium plant height makes it a good match for smaller indoor gardens. High yielding this strain is perfect for first time growers. Long lasting indica effect with a clear high, Medicinally effective in appetite stimulation and pain.



Early Miss Auto-flower



| \$55

| \$95

| \$190



"Fast Flowering"

Type:	Indoor / Outdoor
Growing:	Easy - Moderate
Flowering Time:	7 weeks
Indica/Sativa:	60% Indica, 30% Sativa, 10% Ruderalis
Effect:	Relaxing
THC:	Moderate - High

Strong and dense, this Fast flowering, easy to grow 7 week Indica dominate strain gives a high yield, can be grown anytime of the year outdoors as long as temperature above 10°C. Our Early Miss is medicinally effective in pain therapy. One of the most famous Spanish genetics.





NYC Diesel



5 SEEDS | \$60

10 SEEDS | \$110

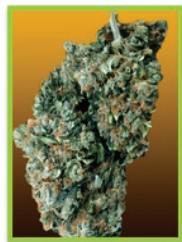
25 SEEDS | \$200



"Dense Hybrid Auto Flower"

Type:	Indoor / Outdoor
Growing:	Easy
Flowering Time:	7 weeks
Indica/Sativa:	50% Sativa, 50% Indica
Effect:	Calming / Relaxing
THC:	Low - Medium

Pungent and sweet, this Indica-dominant hybrid with Ruderalis is the auto-flower version of its prize-winning predecessor. Notes of citrus and fuel provide a relaxing, full-body stone. Good for indoor or outdoor growing. Compact, easy-to-grow plants yield dense, dark-green flowers in just 7 weeks maturation.



Jack Herer Auto-flower



5 SEEDS | \$60

10 SEEDS | \$110

25 SEEDS | \$200



"Sativa Auto Flower"

Type:	Indoor / Outdoor
Growing:	Easy - Moderate
Flowering Time:	9 weeks
Indica/Sativa:	70% Sativa, 20% Indica, 10% Ruderalis
Effect:	Sativa High
THC:	Moderate - High

Jack is back in Auto Flowering form as a Dominant Sativa. This uplifting easy to grow Sativa can take up to 9 weeks to finish flowering and can grow up to 3.5 feet with long branches and thin leaves, yet small enough to fit into any size room. Similar to the original Jack Herer with the genetics of Ruderalis, she will impress any new or experienced grower.





auto-flowering feminized

Train Wreck



| \$60



| \$110



| \$200



"Medical Grade Auto"

Type:	Indoor / Outdoor
Growing:	Easy
Flowering Time:	8 weeks
Indica/Sativa:	60% Sativa, 40% Indica
Effect:	Pure Indica High
THC:	Medium - High

Ruderalis blends with Sativa-dominant Train Wreck to form a mind-altering hybrid auto-flower. Spice up your day with a cerebral, euphoric high while melting away aches and pains. Compact yet high-yielding plants produce dense, resinous buds smelling of citrus and pepper. Suitable for any growing ability, this stealth strain matures in 8 weeks.



Amnesia Haze



| \$60



| \$110



| \$200

"Pure Sativa Uplifting"

Type:	Indoor / Outdoor
Growing:	Easy - Moderate
Flowering Time:	8 - 9 weeks
Indica/Sativa:	Sativa Dominant
Effect:	Sativa Uplifting
THC:	Moderate

Expand your mind with the auto-flower version of this cup-winning Haze hybrid from Holland. Let notes of lemon and spice bring on a psychedelic stone characteristic of Amnesia without the long growing time. This uplifting Sativa will ease anxiety, alleviate headaches and spark the creative fire within. Robust, medium-sized plants produce large, dense, resinous buds which mature in just 9 weeks.





CANNABIS AND THE BODY

NEUROLOGICAL

- Helps control & prevent epileptic seizures
- Can inhibit tumor growth
- Reduces migraine intensity and frequency
- May slow the progression of Alzheimer's

OPHTHALMOLOGICAL

- Reduces the optic nerve pressure in glaucoma patients

PSYCHOLOGICAL

- Eases anxiety
- Suppresses depression
- Can help treat PTSD
- Manages bipolar disorder
- Promotes better sleep patterns
- Manages ADD & ADHD

ABDOMINAL

- Can relieve chronic symptoms of IBS and Crohn's Disease
- Helps treat incontinence
- Eases symptoms of PMS
- Stimulates appetite

PALLIATIVE CARE

- Eases chemotherapy side effects
- Reduces chronic pain
- May improve bone health



White Widow



|\$60



|\$90



|\$185

"World's Most Popular Strain in Auto-Flower"

Type:	Indoor / Outdoor
Growing:	Easy
Flowering Time:	8 weeks
Indica/Sativa:	60% Indica
Effect:	Strong High
THC:	Strong

We took our feminized White Widow and made her flower automatically. High in THC and known for white trichome crystals and orange hairs that develop at the end of its flowering stage. Easy to grow, especially for beginners. Caution the high from White Widow is not for beginners.





A brief history of... MARIJUANA

1600's

Cannabis Sativa is brought by Puritans to America in their search for religious freedom.

1619

1st North American Marijuana Law forces farmers to grow hemp.

**Jamestown Colony, Virginia*



1750 - 1799

George Washington grows hemp as his primary crop at his estate at Mount Vernon.

1910

Following the Mexican Revolution, Mexicans migrated to the US and introduced the recreational use of cannabis to the Americans.

1906

The establishment of the FDA marked the government's first involvement in drug regulation.



1850

Cannabis extract widely recommended and sold over-the-counter in Western pharmacies.



1913

The first state marijuana prohibition law is passed in California.



1914

The Harrison Narcotics Act is passed, prohibiting the possession of marijuana without a prescription.



1930's

Marijuana is regulated in every state through laws enforced by the Uniform State Narcotic Act.

1951

Congress passes the Bogs Act, making possession and distribution of cannabis punishable with mandatory prison sentences.



1937

Marijuana Tax Stamp Act Passes, making possession or transfer of cannabis illegal without a tax stamp issued by the US treasury.

1936

Propaganda film "Reefer Madness" is produced as a way to scare young Americans from using marijuana.



1956

The Narcotics control act is passed, charging first time possession offenders with a minimum of 2 to 10 years in prison and a fine of up to \$20,000!



1961

Harry J. Anslinger convinces over 100 countries of the UN to agree on a single convention that would make marijuana illegal worldwide.

1973

Drug Enforcement Administration (DEA) is formed.



1972

The National Commission on Marijuana and Drug Abuse released the most comprehensive study of marijuana to date, concluding that smoking marijuana in one's own home should not be criminalized. Nixon rejected the report.



1977

California repeals prohibition of marijuana through a law that reduces the penalty for personal possession of an ounce or less of marijuana from felony to a citable misdemeanor with a max fine of \$100.



1986

The Anti-Drug Abuse Act reinstates mandatory prison sentences, which includes large scale cannabis distribution.



2001

Congress sues the Oakland Cannabis Buyers' Coop, in which the US Supreme Court ruled against the coop, saying federal anti-drug laws do not permit exceptions for medical marijuana as it's still not medically accepted.

1998

Oregon passes the Medical Marijuana Act, allowing physicians to prescribe marijuana.

1996

California passes Prop 215, legalizing the medicinal use of marijuana, followed by 20 other states and the District of Columbia.

2003

US government patents medical marijuana. (US Patent 6630507)



2005

US Supreme Court ruled that the Commerce Clause of the United States Constitution gives the federal government the power to ban the use of cannabis, including medical use, across the country.

2013

A historic step was made when Attorney General Eric Holder informed the governors of Washington and Colorado that the DOJ would allow these states to regulate and implement the ballot initiative that legalize the use of marijuana for adults.

2012

Colorado and Washington approve ballot measures that legalize marijuana for recreational use for adults in each state.



2013

For the first time in US history, more than half of Americans think that marijuana usage should be made legal. 58% of Americans think marijuana should be legal.



2013

Uruguay becomes the first country to fully legalize marijuana.



WHAT DOES THE FUTURE HOLD FOR MARIJUANA?

© 2005 - 2017 Crop King Seeds™. All Rights Reserved.





what is low flyer auto-feminized

Low Flyer is the most durable auto-flowering marijuana strain available in the market now. It has gone through years of selective cross breeding before it was produced. A Mexican Ruderalis was mixed with a female Indica. Out of this fusion, a male offspring was taken and it was crossed with a female clone. The result is a short strain which is good for stealth growing which we now call Low Flyer.

It took nine generations of selective cross breeding before this strain was perfected. It can be grown indoors and outdoors easily and it has good resistance to mold and diseases. It has no vegetative stage because it only grows a few set of leaves after germination and it enters the flowering stage immediately about 2 to 3 weeks from seeding.

This strain is perfect for beginners and for those who want to get hold of marijuana buds early.



Dwarf Low Flyer



5 SEEDS | \$60



10 SEEDS | \$110



25 SEEDS | \$190

"Short & Easy"

Type:	Indoor / Outdoor
Growing:	Easy - Moderate
Flowering Time:	6 weeks
Indica/Sativa:	70% Indica, 20% Sativa, 10% Ruderalis
Effect:	Natural High
THC:	Low - Moderate

Dwarf Low Flyer is an easy to grow short plant with a 6 week flowering time. Perfect for hydro or indoor areas with lack of space. She will stay under 2 feet and will flower automatically at 12 to 18 hours of light per day. Low to medium natural high.





EFFECTS OF CANNABINOIDS

- Relieves pain, slows inflammation & boost relaxation
- Stops fungus growth & encourages cell growth
- Prevents risk of nerve damage
- Stimulates appetite
- Stimulates bone growth
- Aids sleep, fights free radicals in the bloodstream and relaxes the muscles



what is high CBD

CBD, or cannabidiol, is the second most abundant active ingredient in cannabis after THC. It is a strong antioxidant, non-psychoactive and has a wide range of medical applications. CBDs have anti-psychotic and anti-tumor properties. They work to prolong the effects of THC while simultaneously providing relief from anxiety, muscle spasms and seizures.

Although it can be found in all cannabis strains in small amounts, CBD is the dominant active compound found in industrial hemp. Cannabis strains containing more than 6% CBD are being developed to meet the demands of medical cannabis patients. Cannabis rich in CBDs can be processed to extract the active compounds into a number of products, including oil, butter and tincture. This versatility gives the medical cannabis grower a wide range of options in medicine preparation.





CB Dream

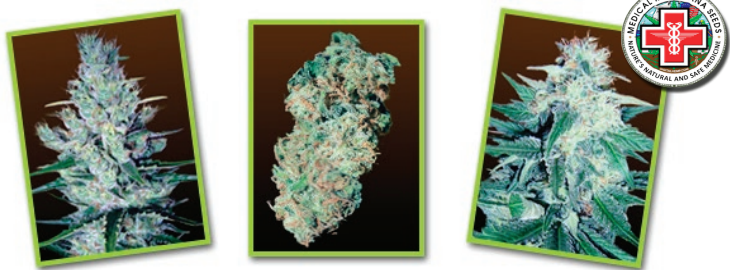
5 SEEDS | \$70
10 SEEDS | \$135
25 SEEDS | \$300



"Low THC, High Medical Relief"

Type:	Indoor / Outdoor
Growing:	Very Easy
Flowering Time:	8 weeks
Indica/Sativa:	80% Indica, 20% Sativa
Effect:	Calming, Relaxing Medical
CBD: 6% THC: 6% 1:1	

Uplifting and relaxing, this Canadian Indica-dominant strain packs a 1:1 punch of high CBD (6%) and low THC (6%) for the medical cannabis grower. Compact, bushy plants reach a height of about 3 feet. Flowers mature in 8 weeks. Tasting of pine and blueberry, this high-yielding variety will make an excellent addition to any garden.



CB Dutch Treat

5 SEEDS | \$70
10 SEEDS | \$135
25 SEEDS | \$300



"Mind, Body and Soul"

Type:	Indoor / Outdoor
Growing:	Very Easy
Flowering Time:	9 to 10 weeks
Indica/Sativa:	Sativa Dominant
Effect:	Uplifting and Uplifting
CBD: 8% THC: 4% 2:1	

We crossed our Haze parents to make a winning combination in this ultimate Sativa-dominant 2:1 medical strain. Spicy and piney, this pain-relieving strain will deliver a mild high that is both energetic and euphoric. High in CBD (8%) and low in THC (4%), these robust plants can reach 3 feet in height or more, with flowering of 9 weeks.





high cbd

grow chat forum

Auto Cheese



5 SEEDS	\$70
10 SEEDS	\$135
25 SEEDS	\$300



"Auto-Flowering CBD Feminized"

Type:	Indoor / Outdoor			
Growing:	Very Easy			
Flowering Time:	8 weeks			
Indica/Sativa:	80% Indica, 20% Sativa			
Effect:	Relaxing Medical, Calming			
CBD:	8%	THC:	8%	1:1

Our fast flowering medical CBD strain has arrived in Cheese form. This famous strain originally from Europe and known for its cheesy characteristics has been turned into auto-flowering gold. We've lowered the THC (8%) and upped the CBD (8%) so you will get an equal balance and 1:1 ratio of a fast flowering mainly indica strain with medical properties.



LEARN



GROW



TEACH



www.420magazine.com/forums/crop-king-seeds

JOIN THE FASTEST GROWING COMMUNITY OF GROWERS IN THE WORLD

*Make friends with like-minded people
Learn from successful growers
Share your growing tips with others*





TYPES OF WEED

RUDERALIS

Ruderalis cannabis is a hearty strain that originated in Eastern Europe. Ruderalis will produce flowers based on its age rather than a photoperiod, also referred to as "autoflowering". Because of their small height, fast growth cycle and lower THC levels, they are usually used for interbreeding.

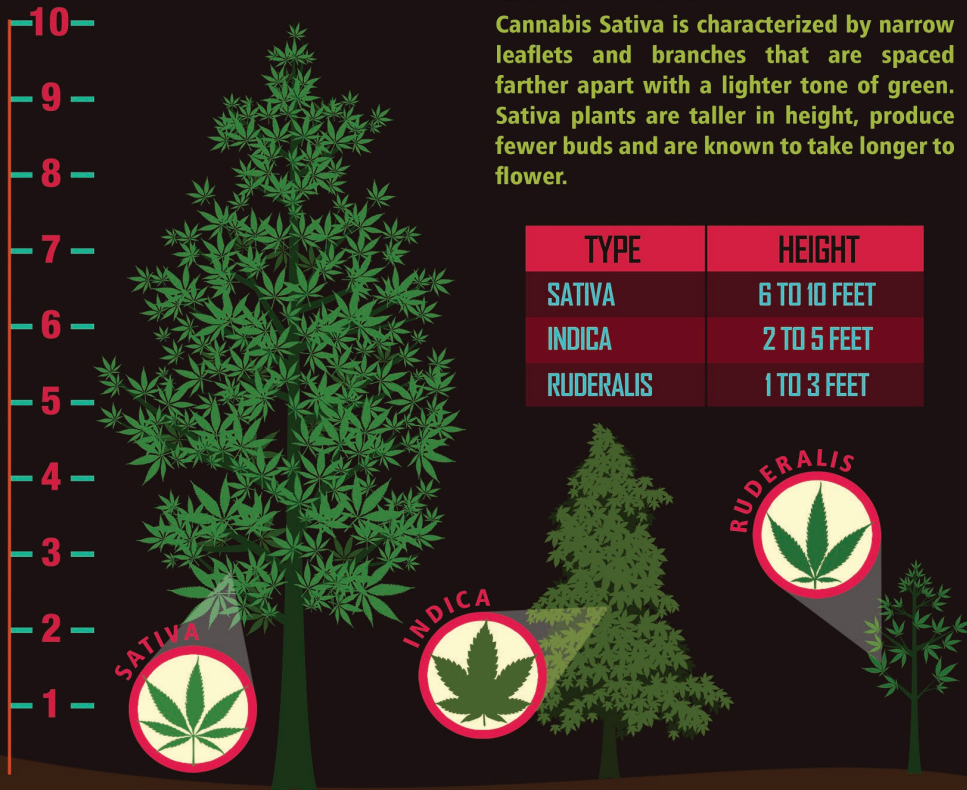
INDICA

Cannabis Indica is characterized by wide, broad leaflets that can overlap and tight branches spaced close together. Indica plants are a darker green, shorter and bushier. The buds are tight and fuller and the effects are relaxing body high.

SATIVA

Cannabis Sativa is characterized by narrow leaflets and branches that are spaced farther apart with a lighter tone of green. Sativa plants are taller in height, produce fewer buds and are known to take longer to flower.

TYPE	HEIGHT
SATIVA	6 TO 10 FEET
INDICA	2 TO 5 FEET
RUDERALIS	1 TO 3 FEET



what is mix & match

For growers who are new or want variety in their garden we are now offering our Mix & Match packs. Sold in 10's and 25's these randomly selected seeds will vary from low to high THC, Indica to Sativa, short to tall in size and various flowering times.

Will you know what strain you have? Yes, when you grow it, you can compare with the photos our growers have sent us over the years. Let the mystery begin and have fun with Crop King Seeds Mix & Match feminized and auto flowering feminized.



CONVENTIONS

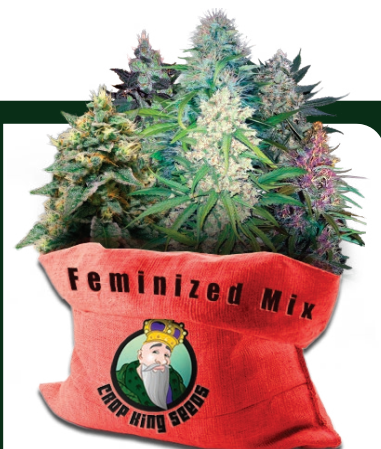




Feminized Mix



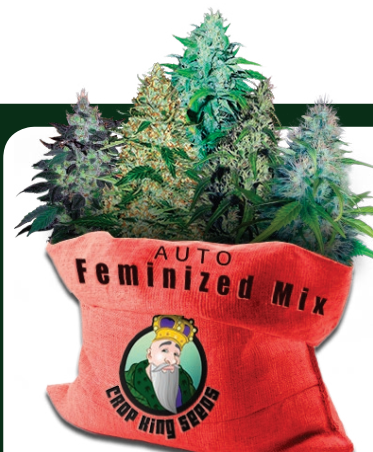
25 SEEDS | \$200
10 SEEDS | \$100



"Random Feminized Mix"

Type:	Indoor / Outdoor
Growing:	Very Easy to Medium
Flowering Time:	Varies
Indica/Sativa:	Varies
Effect:	Relaxing to Stimulating
THC:	Low - Extreme

From award winning strains to our new age exotics, our Feminized Mix pack is filled with our top feminized strains to give you diverse genetics to try in one pack. Flowering times, indica/sativa content, THC levels, effects, and yields vary for each strain. All seeds are unique and hand packaged.



Auto Fem Mix



25 SEEDS | \$200
10 SEEDS | \$100

"Random Auto Fem Mix"

Type:	Auto Indoor / Outdoor
Growing:	Very Easy to Medium
Flowering Time:	Maximum 9 Weeks
Indica/Sativa:	Mainly Indica
Effect:	Relaxing to Stimulating
THC:	Low - High

For growers who love auto flowers we bring you our Auto Feminized Mix Pack. Made up of our top auto-flowering strains these plants are programmed to start flowering on their own in only a few weeks after germination. Mainly Indica dominant and easy to grow. All seeds are unique and hand packaged.



How to Germinate

CROP KING SEEDS



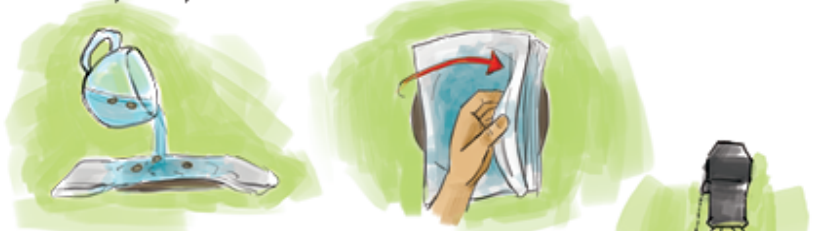
1 Put your seeds into a cup of room temp water (spring or distilled) for 14-18 hours. Sink them to the bottom using your fingers. Note: Some seeds will not sink, this is fine.



Note: At this point it does not matter whether seeds are cracked or uncracked. Transfer to paper towel.

2 Take 2 thick pieces of paper towel and put them on a dinner plate.

3 Pour the seeds and water onto the paper towel. Fold the paper towel over the seeds to cover. Pour off any excess water. The seeds must be able to feel air, heat, and moisture at the same time.



4 Place in a warm, dark open room and let sit until they open. Ensure the paper towel stays moist by adding water periodically (Do not drown the seeds in excess water)

DO NOT: Put into a cupboard, drawer or other small enclosed area as the seeds will have difficulty opening.

5 Seeds will begin to crack open and a tap root will develop. Allow the tap root to grow 1/2 cm to 3/4 of an inch before transplanting. Each strain will take from 2 to 7 days to crack open.

DO NOT: Cover the plate with another plate, plastic wrap or a zip lock bag. This stops the flow of oxygen as seeds need to feel warmth, air flow and moisture at the same time.



24 Hour Germination Hotline

1844 276 7546

Crop King Seeds sells and tests thousands of seeds per month. By testing this high number of seeds it ensures we only ship viable seeds with germination rates of 80% or higher.

MARIJUANA SEEDS NEED 3 FACTORS FOR THEM TO GERMINATE SUCCESSFULLY

MOISTURE WARMTH DARKNESS



Never let the paper towels dry out, but never drown your seeds. The paper towel must stay moist. Depending on the humidity, the paper towel may need re-moistening every 6 hours (your experience may vary). Always check the moisture levels as each seed has a different clock that is triggered by hitting the exact point of moisture, heat and oxygen levels.

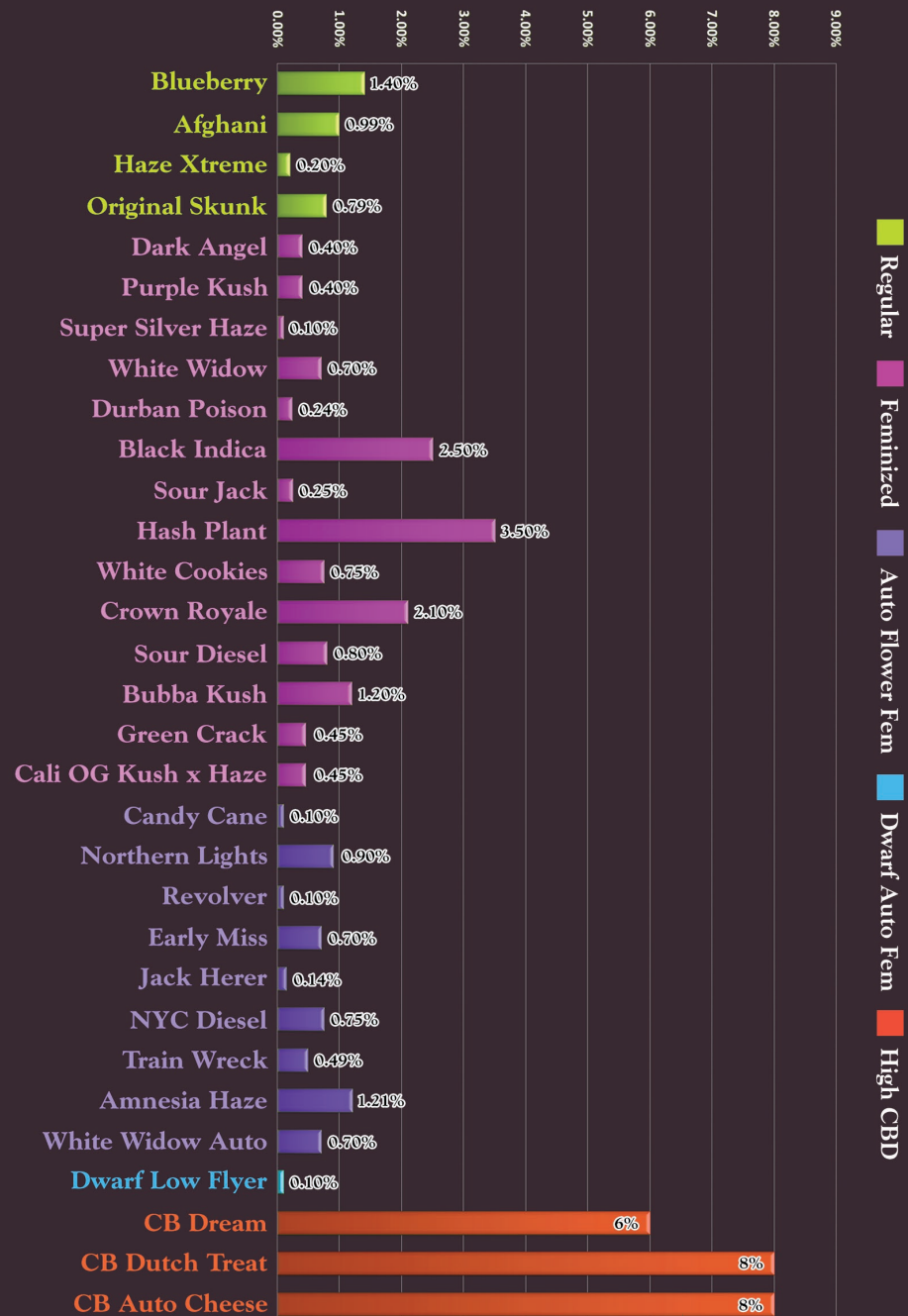
GUARANTEE WILL NOT BE HONOURED IF:

- A. You planted the seeds directly into soil
- B. You used a seed starter kit, rock wool, peat pellets or any other germination device used for vegetable seeds.
- C. You did not germinate using the cup of water -> transfer to moist paper towel, method described.

Storing: Seeds can be stored in a glass jar. Seal the jar and place in dark, cold storage. The seeds can be stored in a basement or garage for up to two years. Keep at 5 to 7 °C.



Uses of CANNABIS





Hydroponics

It is the process of growing plants including marijuana in sand, gravel or liquid, with added nutrients but it does not use soil.

Light Cycle

It is the term used to name the day/night light switching to trigger key growth responses of marijuana plants. In indoor growing, it is vital to understand the two light cycles of marijuana which are the vegetating and flowering.

THC

Abbreviation of Tetrahydrocannabinol, which is a psychoactive substance responsible for the high effects it can bring to cannabis users.

CBD

Abbreviation for Cannabidiol which is another major constituent of the plant next to THC but it has less psychoactive effects and is considered to have a wider scope of medical use than THC.

CBN

Abbreviation for Cannabinol which is a weak cannabinoid psychoactive found within trace amounts of Indica and Sativa plants. CBD is mainly a metabolite of THC (tetrahydrocannabinol)

Hermaphrodite

Marijuana plants with both female and male characteristics. It happens when male marijuana plants pollinate the female flowers which will then make them produce seeds.

Ruderalis

A marijuana species which originated in central Russia. It flowers earlier than Indica and Sativa, does not grow tall and can withstand harsher climates than the other species.

Indica

A type of marijuana which grow shorter and wider than Sativa plants. It can give any smoker a strong body high that will make you sleepy, couch-locked, and relaxed. Indicas are commonly recommended for medical use.

Sativa

Tall and thin marijuana plants which are suited for growing outdoors or areas that require vertical space. The effect of this strain is energetic, creative, and uplifting. It is the total opposite of Indica.

Hybrid

Typically a crossbred of Sativa and Indica developed to highlight a specific combination of the plants to establish marketing differentiation or to get the best from both strains. At times, ruderalis is also used during crossbreeding.

Flowering

The ability of marijuana plants to flower and produce buds which contain THC used in smoking and products. It is also the final stage of growing that mimics the fall months when there is less daylight.

During the flowering stage a plant may double in size compared to its vegetation stage. This is also the time when growers should avoid topping (trimming) their plants because this could hurt the flowers.



visit our store

index

COME SAY, "HIGH!"



Crop King Seeds

#1405, 207 West Hastings
Vancouver, B.C.
V6B 1H7
Canada



1(844)-CROP KING

1(844)-276-7546

info@CropKingSeeds.com

Regular	Page
Blueberry	4
Afghani	5
Haze Extreme	6
Original Skunk	7

Feminized	Page
Dark Angel Fem	12
Purple Kush Fem	13
Super Silver Haze Fem	14
White Widow	15
Durban Poison	16
Black Indica	17
Sour Jack	18
Hash Plant	19
Crown Royale	20
White Cookies	21
Sour Diesel	22
Bubba Kush	23
Cali OG Kush x Haze	24
Green Crack	25

Auto-flowering	Page
Candy Cane	30
Northern Lights	31
Revolver	32
Early Miss	33
NYC Diesel	34
Jack Herer	35
Train Wreck	36
Amnesia Haze	37
White Widow	39

Low Flyer	Page
Dwarf Low Flyer	43

High CBD	Page
CBDream	46
CBDutch Treat	47
CB Auto Cheese	48

Mix & Match	Page
Feminized Mix	52
Auto Fem Mix	53



COMMERCIAL PRODUCTS AVAILABLE NOW



POSTERS



SIGNAGE



STICKERS



MEDTAINER



MORE PINS TO
COLLECT



CHECK OUT OUR SIGNATURE MERCHANDISE AVAILABLE ONLINE

& MORE!





ORDER ONLINE OR FROM OUR FINE RETAILERS!



#1405, 207 West Hastings St.
 Vancouver, B.C.
 V6B 1H7
 Canada



1(844)-CROP KING
 1(844)-276-7546
 info@CropKingSeeds.com

FIND US ON:



Copyright © 2017