

JOHN DEERE ATTACHMENTS



JOHN DEERE



ADD ONE
TO DO MORE



ATTN

325G

DEERE

JOHN DEERE

PR

INSTANT PRODUCTIVITY
JUST ADD
ATTACHMENTS.



100+

*MODELS OF JOHN DEERE
ATTACHMENTS*



KEY

SS Skid Steer

CEX Compact Excavator

CWL Compact Wheel Loader

CTL Compact Track Loader

See pages 16–19 for the complete list of available attachments and vehicle compatibilities.

MASTERS OF MULTITASKING.

BUILT-IN VERSATILITY

To get more productivity from your skid steer, compact track loader, compact wheel loader, or compact excavator, hook-up one of the many easy-to-use attachments. The ever-expanding lineup includes more than 100 models, so you're sure to find the right tool for the job. They're compatible with many comparable brands of machines, too. What's more, each is backed by legendary John Deere parts, service, and warranty coverage. Add an attachment, and watch your productivity instantly increase.

1. Quik-Tatch™

With the universal, self-cleaning Quik-Tatch easy-attachment system, you can go from bucket to grapple to whatever in no time flat. Quik-Tatch attachments, Quik-Tatch productivity. That's the John Deere attachment lineup.

SS CWL CTL



2. Angle-Tatch

Attaching to the Quik-Tatch coupler for attachment tilt up to 14 degrees left or right, Angle-Tatch enables buckets, blades, and other non-hydraulic attachments to rotate for more precise grading and leveling without leaving the seat of the machine.

SS CWL CTL



Hydraulic Hammers

Redesigned to deliver two to three times more blows per minute (BPMs) than previous models, and with 30-percent fewer parts than either competitive or previous models, these hammers keep working where others won't.

SS CEX CTL



KEY

SS Skid Steer

CEX Compact Excavator

CWL Compact Wheel Loader

CTL Compact Track Loader

See pages 16–19 for the complete list of available attachments and vehicle compatibilities.

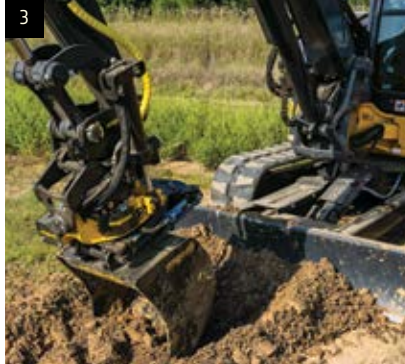
GROW YOUR PRODUCTIVITY. FLEXIBILITY COMES STANDARD

John Deere attachments are designed to optimize performance and productivity. Their heavy-duty construction delivers maximum uptime and long life — whether you're hoisting hay bales, digging ditches, rooting out rocks, or managing vegetation. What's more, these attachments are compatible among a number of machines throughout the John Deere Compact Construction Equipment lineup, letting you increase utilization in a wide variety of tasks.

Rotary Cutters

RE models are designed to maintain brush on embankments, over fences, along rail rights-of-way, and in ditches and other difficult-to-reach places.

CEX



1. Scrap Grapples

Two independent-action hydraulic-powered grapples pick up and grip different-sized objects. Ample grapple opening enables large payloads for work on scrap-handling, recycling-center, disaster-cleanup, and jobsite-cleanup projects.

SS CWL CTL

3. engcon® Tiltrotators

Enable attachments to rotate 360 degrees around the axis and tilt up to 45 degrees side to side — great for working on tight, challenging jobsites.

CEX

2. Root Rakes

Designed for land clearing, ground leveling, and moving materials away from obstructions with minimal site disturbance. Weld-on “D” ring helps speed a wide variety of jobsite tasks.

SS CWL CTL

4. Rotary Cutters

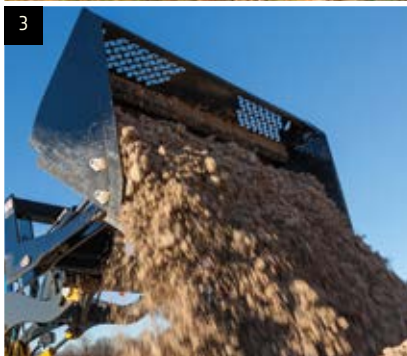
Double-edge blades, fast blade-tip speed, and tapered side-discharge chute enable RC, RS, and RX models to deliver clean cutting and maximum material shredding.

SS CTL

GET MORE DONE.

AND THEY'RE EASY TO USE

Compatible with multiple machines. Intuitive controls. Numerous configurations. Our attachments lineup offers it all. Hydraulic-driven tools such as trenchers and cold planers are available in both standard- and high-flow variations, giving you exactly what you need to get more done — or undone. When it's productivity you want, it's a John Deere attachment you need.



1. Mulching Heads (excavators)

Knife-style cutting teeth in a spiral-tooth pattern on ME36 and ME50* models help clear standing or felled trees and brush along fencerows, roadsides, waterways, and other hard-to-access areas.

CEX *ME50 is compatible on mid-size 75 and 85 P-Tier Excavators.

2. Bale Hugger/Bale Spears

Bale hugger lifts, moves, and stacks round or rectangular bales up to a 2,400-pound load. Lift-and-carry-capable bale spears feature low-profile designs for unrestricted visibility to the attachment.

SS CWL CTL

3. Buckets

Numerous multipurpose, construction, dirt, foundry, utility, tooth, rock, grading-heel, light-material, and rollout buckets are available in varying widths and capacities.

SS CWL CTL

4. Vibratory Rollers

Powerful compactor produces up to 9,370 pounds of easy-to-control force. Choose the width and compaction force you need in padded or sheepfoot configurations.

SS CWL CTL

5. Level Best® Box Blades

From laser-grading parking lots to rebuilding golf-course tees, these grade-control-ready box blades come in three widths, allowing operators to improve efficiency when leveling terrain.

SS CTL

6. Cold Planers

Robust compact cold planers including the new CP40G are powered by industry-leading Wirtgen Group milling machine and cutting technology. Exclusive in-cab-activated Tilt Float/Tilt Lock feature delivers smoothly milled surfaces in a minimum of passes.

SS CTL

KEY

SS Skid Steer

CEX Compact Excavator

CWL Compact Wheel Loader

CTL Compact Track Loader

See pages 16–19 for the complete list of available attachments and vehicle compatibilities.

Mulching Heads (skid steers and compact track loaders)

New SM60 clears land and mulches material up to 5 inches in diameter on a mid-frame model under 75 horsepower. Compact new MK76 takes on land clearing in stringy, dense, and stubborn vegetation in a minimum of passes. The MH60D and new MH72D efficiently chew stumps and shred underbrush and woody materials into usable mulch in minutes.

SS CTL



KEY

SS Skid Steer

CEX Compact Excavator

CWL Compact Wheel Loader

CTL Compact Track Loader

See pages 16–19 for the complete list of available attachments and vehicle compatibilities.

WE BACK IT UP. HERE FOR YOU

Any attachment can help you do more. But only our attachments are backed by nearly 2,000 John Deere Compact Construction Equipment dealer locations, extensive parts inventories at 10 North American parts depots, and a one-year unlimited-hour warranty. When it comes to providing the uptime and response you need, we dig deeper.





Pallet Forks

Available in lengths of 42, 48, and 60 inches, our pallet forks feature a brick-guard design for protection against load damage and skid-resistant steps on both sides of the attachment frame.

SS CWL CTL



1. Power Rakes

Perfect for seedbed or site prep, power rakes feature exclusive forward and backward operation. Adjustable end plates provide box-scraper double-duty performance.

SS CTL

2. Augers

With reverse rotation for quick back-outs, durably constructed augers are designed to boost operational efficiency while minimizing component stress.

SS CWL CTL CEX

3. High-Torque Stump Shredder

Removes stumps from 8 to 28 inches in diameter in a single pass and shreds material without the dangerous flying debris of conventional stump grinders.

SS CTL

4. Nursery Forks

Firmly grasp and effortlessly transport large rocks, light boulders, and balled and burlapped landscape stock up to 44 inches in diameter.

SS CWL CTL

5. Rock Grapples

High grapple forces, wide grapple capacities, and weld-in serrated cutting edges make rock grapples ideal for tasks such as land clearing, jobsite cleanup, and brush removal.

SS CWL CTL

MAKE THE MOST OF YOUR INVESTMENT YEAR-ROUND.

READY IN ANY WEATHER

Don't let the weather dampen your plans. Equipped with any of these John Deere attachments, neither rain nor snow nor wind will keep you from the swift completion of your duties. What's more, these foul-weather friends will expand the year-round opportunities for your machines, helping make the most of your investment.



1. Snow Pushers

Quickly and efficiently remove large accumulations of snow from sidewalks, parking lots, and driveways. Optional pullback edge is ideal for work in confined areas and around obstructions.

SS CWL CTL

2. Brooms

Angle and pick-up styles are available. Heavy-duty, high-torque, bidirectional motors promote long-term dependability.

SS CWL CTL

3. Snow/Utility/V-Blades

Blade angles hydraulically 30 degrees right or left. Trip springs protect vehicle from sudden impacts. Easy-to-adjust skid shoes and replaceable 0.5-inch-thick cutting edges are standard; rubber edges are available.

SS CWL CTL

KEY

SS Skid Steer

CEX Compact Excavator

CWL Compact Wheel Loader

CTL Compact Track Loader

See pages 16–19 for the complete list of available attachments and vehicle compatibilities.



Snow Blowers

These durable models are designed to capably tackle winter's worst ranging from normal duty to high and compacted accumulations. Floating hitch enables unparalleled ground contact across uneven surfaces. Optional back drag optimizes snow removal close to walls, garage doors, and other objects.

SS CWL CTL

KEY

SS Skid Steer

CEX Compact Excavator

CWL Compact Wheel Loader

CTL Compact Track Loader

See pages 16–19 for the complete list of available attachments and vehicle compatibilities.



Trenchers

Choose 36-, 48-, and 60-inch digging depths and high- and low-flow versions. Trencher design eases entrance and exit from the operator's station.

SS CTL

AT HOME ON THE RANGE ... OR THE FARM OR THE JOBSITE.

The places you run your compact fleet can be pretty varied. That's why you need attachments that can meet a variety of applications. Whether you need to shape some scenery, work your spread, or clear the land, we've got the equipment to help you do all that — and more.



1



2



3



4

1. Plate Compactors

Designed for trench, slope, and excavation compaction, plate compactors are available in widths from 13 to 24 inches.

CEX

3. Rotary Tillers

Rotary tillers feature rugged construction, heavy-duty tines, and a tilling depth to 6 inches. Bidirectional forward-and-reverse operation increases productivity.

SS CTL

2. Dozer Blades

Durable dozer blades come standard equipped with reversible cutting edges and skid shoes for long-term durability. Power-angle-tilt lets you make adjustments on the go.

SS CTL

4. Steel Tracks

Self-cleaning design reduces ground pressure and helps improve traction and flotation in soft, muddy, or loose conditions. Smooths the ride over hard ground and gravel, too.

SS

JOHN DEERE ATTACHMENTS COMPATIBILITY

	G-Series Small Frames			G-Series Mid Frames			G-Series Large Frames			P-Tier Large Frames					Compact Excavators					Compact Wheel Loaders						
	316GR	317G	318G	320G	324G	325G	330G	331G	332G	333G	330 P-Tier	331 P-Tier	333 P-Tier	334 P-Tier	335 P-Tier	17 P-Tier	26 P-Tier	30 P-Tier	35 P-Tier	50 P-Tier	60 P-Tier	184 G-Tier*	204 G-Tier*	244 P-Tier*	304 G-Tier*	324P-Tier*
Angle-Tatch																										
ATI4	•	•	•	•	•	•	•	•	•	•	•	•	•	•								•	•	•	•	•
Augers																										
PA15B	•	•	•																							
PA30B	•	•	•	•	•	•	•	•	•	•	•	•	•	•												
PA40							• HF	• HF	• HF	• HF	• HF	• HF	• HF	• HF										• HF		• HF
Bale Hugger																										
AH80	•	•	•	•	•	•	•	•	•	•	•	•	•	•												
Bale Spears																										
AB21 Single	•	•	•	•	•	•	•	•	•	•	•	•	•	•												
AB31 Single (HD)	•	•	•	•	•	•	•	•	•	•	•	•	•	•												
AB32 Double	•	•	•	•	•	•	•	•	•	•	•	•	•	•												
AB42 Double (HD)	•	•	•	•	•	•	•	•	•	•	•	•	•	•												
AB43 Triple	•	•	•	•	•	•	•	•	•	•	•	•	•	•												
Brooms, Angle																										
BA72C 72 in.	•	•	•	•	•	•	•	•	•	•	•	•	•	•												
BA84C 84 in.				•	•	•	•	•	•	•	•	•	•	•								•	•	•	•	•
BA96C 96 in.				•	•	•	•	•	•	•	•	•	•	•								•	•	•	•	•
Brooms, Pick-Up																										
BP72C 72 in.	•	•	•	•	•	•	•	•	•	•	•	•	•	•												
BP84C 84 in.	•	•	•	•	•	•	•	•	•	•	•	•	•	•												
Brooms, Rigid Pick-Up																										
BR60C 60 in.	•	•	•																							
BR72C 72 in.	•	•	•	•	•	•	•	•	•	•	•	•	•	•												
BR84C 84 in.	•	•	•	•	•	•	•	•	•	•	•	•	•	•								•	•	•	•	•
Buckets																										
C66 Construction 66 in.	•	•	•	•	•	•	•	•	•	•	•	•	•	•												
C72 Construction 72 in.	•	•	•	•	•	•	•	•	•	•	•	•	•	•												
C78 Construction 78 in. (HD)				•	•	•	•	•	•	•	•	•	•	•												
C84 Construction 84 in. (HD)				•	•	•	•	•	•	•	•	•	•	•												
C90 Construction 90 in. (SD)				•	•	•	•	•	•	•	•	•	•	•												
C66 Construction 66 in. w/ BOC Edge	•	•	•	•	•	•	•	•	•	•	•	•	•	•												
C72 Construction 72 in. w/ BOC Edge	•	•	•	•	•	•	•	•	•	•	•	•	•	•												
C78 Construction 78 in. (HD) w/ BOC Edge				•	•	•	•	•	•	•	•	•	•	•								•	•	•	•	•
C84 Construction 84 in. (HD) w/ BOC Edge				•	•	•	•	•	•	•	•	•	•	•								•	•	•	•	•
C66 Construction 66 in. w/ BOC Serrated Edge	•	•	•	•	•	•	•	•	•	•	•	•	•	•												
C72 Construction 72 in. w/ BOC Serrated Edge	•	•	•	•	•	•	•	•	•	•	•	•	•	•												
C78 Construction 78 in. (HD) w/ BOC Serrated Edge				•	•	•	•	•	•	•	•	•	•	•												
C84 Construction 84 in. (HD) w/ BOC Serrated Edge				•	•	•	•	•	•	•	•	•	•	•												
C90 Construction 90 in. (SD) w/ BOC Serrated Edge				•	•	•	•	•	•	•	•	•	•	•												
D56 Dirt 56 in.	•	•	•																							
D56 Dirt 56 in. w/ Edge	•	•	•																							
D60 Dirt 60 in.	•	•	•																							
D60 Dirt 60 in. w/ Edge	•	•	•																							
D60 Dirt 60 in. w/ Teeth	•	•	•																							
D66 Dirt 66 in.	•	•	•	•	•	•	•	•	•	•	•	•	•	•												
D66 Dirt 66 in. w/ Edge	•	•	•	•	•	•	•	•	•	•	•	•	•	•												
D66 Dirt 66 in. w/ Teeth	•	•	•	•	•	•	•	•	•	•	•	•	•	•												
F66 Foundry 66 in.	•	•	•	•	•	•	•	•	•	•	•	•	•	•												
F72 Foundry 72 in.	•	•	•	•	•	•	•	•	•	•	•	•	•	•												
F78 Foundry 78 in. (HD)				•	•	•	•	•	•	•	•	•	•	•												
GH60 Grading Heel 60 in.	•	•	•																							
GH60 Grading Heel 60 in. w/ Teeth	•	•	•																							
GH66 Grading Heel 66 in. w/ Teeth	•	•	•	•	•	•	•	•	•	•	•	•	•	•												
GH72 Grading Heel 72 in.	•	•	•	•	•	•	•	•	•	•	•	•	•	•												
GH72 Grading Heel 72 in. w/ Teeth	•	•	•	•	•	•	•	•	•	•	•	•	•	•												
GH78 Grading Heel 78 in. (HD)				•	•	•	•	•	•	•	•	•	•	•												
GH78 Grading Heel 78 in. (HD) w/ Teeth				•	•	•	•	•	•	•	•	•	•	•												
LM90 Light Material 90 in.				•	•	•	•	•	•	•	•	•	•	•								•	•	•	•	•
MP66B Multi-Purpose Bucket 66 in.	•	•	•	•	•	•	•	•	•	•	•	•	•	•												
MP72B Multi-Purpose Bucket 72 in.	•	•	•	•	•	•	•	•	•	•	•	•	•	•												
MP78B Multi-Purpose Bucket 78 in.	•	•	•	•	•	•	•	•	•	•	•	•	•	•												
MP84B Multi-Purpose Bucket 84 in.	•	•	•	•	•	•	•	•	•	•	•	•	•	•												
R66 Rock 66 in.	•	•	•	•	•	•	•	•	•	•	•	•	•	•												
R75 Rock 75 in.	•	•	•	•	•	•	•	•	•	•	•	•	•	•												
R84 Rock 84 in.	•	•	•	•	•	•	•	•	•	•	•	•	•	•												
RB72 Rollout 72 in.	•	•	•	•	•	•	•	•	•	•	•	•	•	•												

JOHN DEERE ATTACHMENTS COMPATIBILITY

	G-Series Small Frames			G-Series Mid Frames			G-Series Large Frames			P-Tier Large Frames					Compact Excavators					Compact Wheel Loaders							
	316GR	317G	318G	320G	324G	325G	330G	331G	332G	333G	330 P-Tier	331 P-Tier	333 P-Tier	334 P-Tier	335 P-Tier	17 P-Tier	26 P-Tier	30 P-Tier	35 P-Tier	50 P-Tier	60 P-Tier	184 G-Tier*	204 G-Tier*	244 P-Tier*	304 G-Tier*	324P-Tier*	
Buckets (continued)																											
RB84 Rollout 84 in.				•	•	•	•	•	•	•	•	•	•	•	•							•	•	•	•	•	
RB96 Rollout 96 in.							•	•	•	•	•	•	•	•								•	•	•	•	•	
T66 Tooth 66 in.	•	•	•	•	•	•																					
T72 Tooth 72 in.		•	•	•	•	•																					
T78 Tooth 78 in. (HD)				•	•	•	•	•	•	•	•	•	•	•								•	•	•	•	•	
T84 Tooth 84 in. (HD)				•	•	•	•	•	•	•	•	•	•	•								•	•	•	•	•	
T90 Tooth 90 in. (SD)																											
U66 Utility 66 in.	•	•	•	•	•	•																					
U72 Utility 72 in.		•	•	•	•	•																					
U78 Utility 78 in. (HD)				•	•	•	•	•	•	•	•	•	•	•													
U84 Utility 84 in. (HD)							•	•	•	•	•	•	•	•													
U66 Utility 66 in. w/ BOC Edge	•	•	•	•	•	•																					
U72 Utility 72 in. w/ BOC Edge		•	•	•	•	•																					
U78 Utility 78 in. (HD) w/ BOC Edge				•	•	•	•	•	•	•	•	•	•	•								•	•	•	•	•	
U84 Utility 84 in. (HD) w/ BOC Edge							•	•	•	•	•	•	•	•								•	•	•	•	•	
Cold Planers																											
CP18G				• HF	• HF	• HF	• HF	• HF	• HF	• HF	• HF	• HF	• HF	• HF	• HF												
CP24G				• HF	• HF	• HF	• HF	• HF	• HF	• HF	• HF	• HF	• HF	• HF	• HF												
CP30G							• HF	• HF	• HF	• HF	• HF	• HF	• HF	• HF	• HF												
CP40G																											
Dozer Blades																											
DB84 84 in.		•	•	•	•	•																					
DB96 96 in.							•	•	•	•	•	•	•	•													
engcon® Tiltrotators																											
EC204																	•	•	•								
EC206																				•	•						
Grapples, Rock																											
GR66B 66 in.	•	•	•																								
GR72B 72 in.	•	•	•	•	•	•	•	•	•	•	•	•	•	•													
GR78B 78 in.				•	•	•	•	•	•	•	•	•	•	•													
GR84B 84 in.				•	•	•	•	•	•	•	•	•	•	•								•	•	•	•	•	
Grapples, Scrap																											
GS66B 66 in.	•	•	•																								
GS72B 72 in.	•	•	•	•	•	•	•	•	•	•	•	•	•	•													
GS78B 78 in.				•	•	•	•	•	•	•	•	•	•	•								•	•	•	•	•	
GS84B 84 in.				•	•	•	•	•	•	•	•	•	•	•								•	•	•	•	•	
Hydraulic Hammers																											
HH20C																•	•	•	•								
HH40C	•	•	•	•	•	•										•	•	•	•								
HH60C	•	•	•	•	•	•	•	•	•	•	•	•	•	•													
HH80C				•	•	•	•	•	•	•	•	•	•	•								•	•				
HH40C-HH80C SSL Mounting Bracket	•	•	•	•	•	•	•	•	•	•	•	•	•	•													
Level Best™ Box Blades																											
PD72 72-in. 2D	•	•	•																								
PD84 84-in. 2D	•	•	•	•	•	•	•	•	•	•	•	•	•	•													
PD96 96-in. 2D		•	•	•	•	•	•	•	•	•	•	•	•	•													
PD72 72-in. 3D	•	•	•																								
PD84 84-in. 3D	•	•	•	•	•	•	•	•	•	•	•	•	•	•													
PD96 96-in. 3D		•	•	•	•	•	•	•	•	•	•	•	•	•													
Mulching Heads																											
ME36																				•	•						
ME50 ¹																											
SM60				•	•	•																					
MH60D							• HF	• HF	• HF	• HF	• HF	• HF	• HF	• HF													
MH72D																											
MK76																											
Nursery Forks																											
NF44	•	•	•	•	•	•	•	•	•	•	•	•	•	•								•	•	•	•	•	
Offset Adapter Coupler																											
2.4-in. Offset Adapter Coupler	•	•	•	•	•	•	•	•	•	•	•	•	•	•													

¹ME50 Mulching Head is compatible with mid-size 75 and 85 P-Tier Excavators.

JOHN DEERE ATTACHMENTS COMPATIBILITY

	G-Series Small Frames			G-Series Mid Frames			G-Series Large Frames			P-Tier Large Frames					Compact Excavators					Compact Wheel Loaders							
	316GR	317G	318G	320G	324G	325G	330G	331G	332G	333G	330 P-Tier	331 P-Tier	333 P-Tier	334 P-Tier	335 P-Tier	17 P-Tier	26 P-Tier	30 P-Tier	35 P-Tier	50 P-Tier	60 P-Tier	184 G-Tier*	204 G-Tier*	244 P-Tier*	304 G-Tier*	324P-Tier*	
Pallet Forks, Class 2																											
45-in. Frame / 42-in. Tines - 3,750-lb. Frame - 45-in. Wide	•	•	•	•	•	•																					
45-in. Frame / 48-in. Tines - 3,750-lb. Tine - 48-in. Long	•	•	•	•	•	•																					
45-in. Frame / 42-in. Tines - 5,500-lb. Frame - 45-in. Wide	•	•	•	•	•	•	•	•	•	•	•	•	•	•	•							•	•	•	•	•	•
45-in. Frame / 48-in. Tines - 5,500-lb. Tine - 48-in. Long - 5,500 lb.	•	•	•	•	•	•	•	•	•	•	•	•	•	•	•							•	•	•	•	•	•
45-in. Frame / 48-in. Tines - 6,200-lb. Frame - 45-in. Wide		•		•	•	•	•	•	•	•	•	•	•	•	•							•	•	•	•	•	•
60-in. Frame / 48-in. Tines - 6,200-lb. Tine - 48-in. Long - 6,200 lb.		•		•	•	•	•	•	•	•	•	•	•	•	•							•	•	•	•	•	•
Pallet Forks, Class 3																											
Frame - 45-in. Wide								•	•	•	•	•	•	•	•												
Frame - 60-in. Wide								•	•	•	•	•	•	•	•												
Tine - 48 in. - Class 3B								•	•	•	•	•	•	•	•												
Tine - 60 in. - Class 3B								•	•	•	•	•	•	•	•												
Plate Compactors																											
PC4																	•	•	•								
PC7																				•	•						
PC10 [†]																					•						
Power Rakes, Angle																											
PR60 60 in.	•		•																								
PR72B 72 in.	•	•	•	•	•	•	•	•	•	•	•	•	•	•	•												
PR84B 84 in.		•		•	•	•	•	•	•	•	•	•	•	•	•												
PR96B 96 in.				•	•	•	•	•	•	•	•	•	•	•	•												
Root Rakes																											
RR72 72 in.		•	•	•	•	•	•	•	•	•	•	•	•	•	•							•	•	•	•	•	•
RR78 78 in.		•		•	•	•	•	•	•	•	•	•	•	•	•							•	•	•	•	•	•
RR84 84 in.				•	•	•	•	•	•	•	•	•	•	•	•							•	•	•	•	•	•
Rotary Cutters																											
RC60B	•	•	•	•	•	•	•	•	•	•	•	•	•	•	•												
RC72B		•	•	•	•	•	•	•	•	•	•	•	•	•	•												
RC78B		•		•	•	•	•	•	•	•	•	•	•	•	•												
RE40																			•								
RE50																				•	•						
RS72							• HF	• HF	• HF	• HF	• HF	• HF	• HF	• HF	• HF												
RX72							• HF	• HF	• HF	• HF	• HF	• HF	• HF	• HF	• HF												
RX84							• HF	• HF	• HF	• HF	• HF	• HF	• HF	• HF	• HF												
Rotary Tillers																											
RT52	•	•	•	•	•	•	•	•	•	•	•	•	•	•	•												
RT66	•	•	•	•	•	•	•	•	•	•	•	•	•	•	•												
Snow Blowers																											
SB72E	•	•	•	•	•	•																•	•	•	•	•	•
SB84E	•	•	•	•	•	•																•	•	•	•	•	•
SB72M				•	•	•																					
SB84M							• HF	• HF	• HF	• HF	• HF	• HF	• HF	• HF	• HF									• HF	• HF	• HF	• HF
SB84S							• HF	• HF	• HF	• HF	• HF	• HF	• HF	• HF	• HF										• HF	• HF	• HF
Snow Pushers																											
SP8C	•	•	•	•	•	•	•	•	•	•	•	•	•	•	•							•	•	•	•	•	•
SP10C							•	•	•	•	•	•	•	•	•							•	•	•	•	•	•
Snow/Utility Blades																											
BL68 w/ Float 72 in.	•	•	•																								
BL78 w/ Float 84 in.	•	•	•	•	•	•	•	•	•	•	•	•	•	•	•												
BL88 w/ Float 96 in.		•	•	•	•	•	•	•	•	•	•	•	•	•	•												
BL98 w/ Float 108 in.				•	•	•	•	•	•	•	•	•	•	•	•							•	•	•	•	•	•
BL108 w/ Float 120 in.					•	•	•	•	•	•	•	•	•	•	•							•	•	•	•	•	•
Snow/Utility V-Blades																											
Snow/Utility V-Blade - BV6	•		•																								
Snow/Utility V-Blade - BV8		•	•	•	•	•	•	•	•	•	•	•	•	•	•							•	•	•	•	•	•
Snow/Utility V-Blade - BV9		•	•	•	•	•	•	•	•	•	•	•	•	•	•							•	•	•	•	•	•
Steel Tracks																											
10-in. Heavy Duty (HD) Tires	•		•	•	•																						
12-in. HD Tires				•	•		•																				
14-in. HD Tires							•		•																		
Stump Shredder																											
SS30 Stump Shredder				• HF	• HF	• HF	• HF	• HF	• HF	• HF	• HF	• HF	• HF	• HF	• HF												

[†]PC10 Plate Compactor is compatible with 310 G-Tier, 310 P-Tier, 320 P-Tier, and 410 P-Tier BHLs

JOHN DEERE ATTACHMENTS COMPATIBILITY

	G-Series Small Frames			G-Series Mid Frames			G-Series Large Frames				P-Tier Large Frames					Compact Excavators						Compact Wheel Loaders					
	316GR	317G	318G	320G	324G	325G	330G	331G	332G	333G	330 P-Tier	331 P-Tier	333 P-Tier	334 P-Tier	335 P-Tier	17 P-Tier	26 P-Tier	30 P-Tier	35 P-Tier	50 P-Tier	60 P-Tier	184 G-Tier*	204 G-Tier*	244 P-Tier*	304 G-Tier*	324P-Tier*	
Trenchers																											
TC36 14-22 gpm, 36-in. x 6-in.-wide std. cup every station	•	•	•	•	•	•																					
TC36 14-22 gpm, 36-in. x 8-in.-wide std. cup every station	•	•	•	•	•	•																					
TC36 14-22 gpm, 36-in. x 6-in.-wide 70/30 shark tooth	•	•	•	•	•	•																					
TC48 14-22 gpm, 48-in. x 6-in.-wide std. cup every station	•	•	•	•	•	•																					
TC48 14-22 gpm, 48-in. x 8-in.-wide std. cup every station	•	•	•	•	•	•																					
TC48 14-22 gpm, 48-in. x 6-in.-wide 70/30 shark tooth	•	•	•	•	•	•																					
TR36B 16-19 gpm, 36-in. x 6-in.-wide std. cup every station	•	•	•								•	•	•	•	•												
TR36B 16-19 gpm, 36-in. x 8-in.-wide std. cup every station	•	•	•								•	•	•	•	•												
TR36B 16-19 gpm, 36-in. x 6-in.-wide 70/30 shark tooth	•	•	•								•	•	•	•	•												
TR36B 20-24 gpm, 36-in. x 6-in.-wide std. cup every station				•	•	•	•	•	•	•	•	•	•	•	•												
TR36B 20-24 gpm, 36-in. x 8-in.-wide std. cup every station				•	•	•	•	•	•	•	•	•	•	•	•												
TR36B 20-24 gpm, 36-in. x 6-in.-wide 70/30 shark tooth				•	•	•	•	•	•	•	•	•	•	•	•												
TR36B 27-35 gpm, 36-in. x 6-in.-wide std. cup every station				• HF	• HF	• HF					•	•	•	•	•												
TR36B 27-35 gpm, 36-in. x 8-in.-wide std. cup every station				• HF	• HF	• HF					•	•	•	•	•												
TR36B 27-35 gpm, 36-in. x 6-in.-wide 70/30 shark tooth				• HF	• HF	• HF					•	•	•	•	•												
TR36B 36-44 gpm, 36-in. x 6-in.-wide std. cup every station							• HF	• HF	• HF	• HF	• HF	• HF	• HF	• HF	• HF												
TR36B 36-44 gpm, 36-in. x 8-in.-wide std. cup every station							• HF	• HF	• HF	• HF	• HF	• HF	• HF	• HF	• HF												
TR36B 36-44 gpm, 36-in. x 6-in.-wide 70/30 shark tooth							• HF	• HF	• HF	• HF	• HF	• HF	• HF	• HF	• HF												
TR48B 16-19 gpm, 48-in. x 6-in.-wide std. cup every station	•	•	•								•	•	•	•	•												
TR48B 16-19 gpm, 48-in. x 8-in.-wide std. cup every station	•	•	•								•	•	•	•	•												
TR48B 16-19 gpm, 48-in. x 6-in.-wide 70/30 shark tooth	•	•	•								•	•	•	•	•												
TR48B 20-24 gpm, 48-in. x 6-in.-wide std. cup every station				•	•	•	•	•	•	•	•	•	•	•	•												
TR48B 20-24 gpm, 48-in. x 8-in.-wide std. cup every station				•	•	•	•	•	•	•	•	•	•	•	•												
TR48B 20-24 gpm, 48-in. x 6-in.-wide 70/30 shark tooth				•	•	•	•	•	•	•	•	•	•	•	•												
TR48B 27-35 gpm, 48-in. x 6-in.-wide std. cup every station				• HF	• HF	• HF					•	•	•	•	•												
TR48B 27-35 gpm, 48-in. x 8-in.-wide std. cup every station				• HF	• HF	• HF					•	•	•	•	•												
TR48B 27-35 gpm, 48-in. x 6-in.-wide 70/30 shark tooth				• HF	• HF	• HF					•	•	•	•	•												
TR48B 36-44 gpm, 48-in. x 6-in.-wide std. cup every station							• HF	• HF	• HF	• HF	• HF	• HF	• HF	• HF	• HF												
TR48B 36-44 gpm, 48-in. x 8-in.-wide std. cup every station							• HF	• HF	• HF	• HF	• HF	• HF	• HF	• HF	• HF												
TR48B 36-44 gpm, 48-in. x 6-in.-wide 70/30 shark tooth							• HF	• HF	• HF	• HF	• HF	• HF	• HF	• HF	• HF												
TR60B 27-35 gpm, 60-in. x 6-in.-wide std. cup every station				• HF	• HF	• HF					•	•	•	•	•												
TR60B 27-35 gpm, 60-in. x 6-in.-wide 70/30 shark tooth				• HF	• HF	• HF					•	•	•	•	•												
TR60B 36-44 gpm, 60-in. x 6-in.-wide std. cup every station							• HF	• HF	• HF	• HF	• HF	• HF	• HF	• HF	• HF												
TR60B 36-44 gpm, 60-in. x 6-in.-wide 70/30 shark tooth							• HF	• HF	• HF	• HF	• HF	• HF	• HF	• HF	• HF												
Vibratory Rollers																											
VR66C Smooth Drum 66 in.	• WT	• WT	• WT	• WT	• WT	•	•	•	•	•	•	•	•	•	•												
VR66C Padded Drum 66 in.	• WT	• WT	• WT	• WT	• WT	•	•	•	•	•	•	•	•	•	•												
VR73C Smooth Drum 73 in.		• WT				•	•	•	•	•	•	•	•	•	•												
VR73C Padded Drum 73 in.		• WT				•	•	•	•	•	•	•	•	•	•												
VR84C Smooth Drum 84 in.						•	•	•	•	•	•	•	•	•	•									•			•

HD=Heavy Duty WT=Requires Additional Weights HF=Requires High Flow Available (not optimal)

*Requires the skid-steer interface in order to operate.



DKAPPOCCE (24-10)



JOHN DEERE