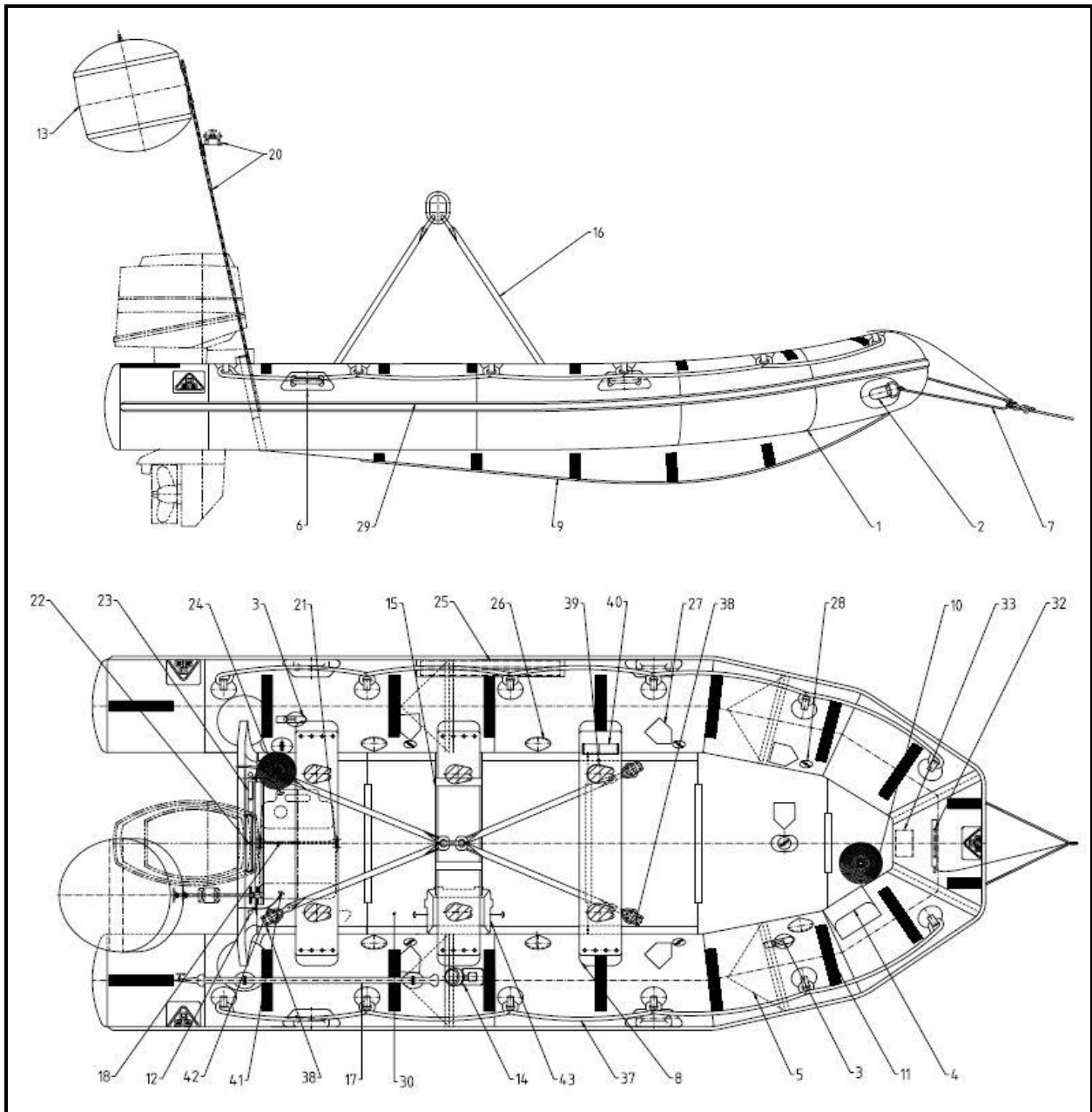


**DSB 420 IRB - SOLAS RESCUE BOAT**



**DRAWING ARRANGEMENT**



<b>LEGEND</b>			
<b>DRAWING NO.</b>	<b>QTY</b>	<b>ITEM</b>	<b>PART NO.</b>
01	1	Inflatable buoyancy tube	14225700
02	2	Bow towing patch	80101290
03	2	Safety Knife with holder	80101700
04	1	Rescue quoit with holder	80107170 + 8064029
05	4	Bulkhead	NN
06	4	Carrying handle	00101230
07	1	Towing line with quick release mechanism	80401370 + 80701800
08	2	Wooden seat, fixed	00503701 + 00503721
09	1	keel reinforcement	00104240
10	1	Towing line bow, 30mtr	80401370
11	1	Set of retro-reflective tapes	80900070
12	2	Drain valve identification	NN
13	1	Radar Reflector	00730920
14	1	Compass with holder	00914230 + 00740440
15	1	Stowage bag for boat equipment	80640210
16	1	Lifting device	00303500
17	1	Boat hook, fixed in holding patches	00902200
18	1	Fuel tank position	NN
19	1	Transom	00540451
20	1	Mast for Radar Reflector with position indicating light	80727320 + 00729110
21	2	Eyelet for tank fastening	00714000
22	1	Clamp plate for outboard engine	00701010
23	2	Boat identification plate	00702830+00702850
24	1	Towing line, 50mtr, fixed	80401360
25	1	Boarding ladder and righting belt	80314011
26	5	Safety relief valve	00811130
27 + 28	6	Valve identification + Inflation valve	00812080
29	1	Rubbing strake	00104230
30	1	Wooden floor with anti-slip covering	00585587
31	2	Eye screw	on request
32	1	Bag for release hook	80314051
33	1	Painter release identification (bow)	NN
34	2	Drain hose	80102770
35	1	Towing bridle stern	on request
36	1	Transom reinforcement	on request
37	2	Grab line	00401450
38	4	Lifting armature	NN
39	5	Seating position indication	NN
40	1	Wooden seat with quick release	00503721
41	2	Toggle	on request
42	2	Rope for fixture	on request
43	1	Battery with battery case	00935570 + 00804197

