



# FACILITY SERVICES CATALOG

## KITCHEN TOWEL

- Heavy weight construction
- 40% more absorbent than competition
- Pressed and hand folded – not bagged

Size: 15" x 29"  
100% Cotton Herringbone Weave



---

## MICROFIBER TOWELS - FOOD SERVICE

- Heavy weight construction
- Reduced lint towel
- Hand folded – not bagged

Size: 16" x 16"  
Microfiber



## COUNTER STEAMER

- Heavy weight construction
- 100% more absorbent than competition
- Hand folded – not bagged

Size: 17" x 20"

Polyester/Cotton Blend Terrycloth



## GLASS TOWEL

- Heavy weight construction
- Reduced lint towel
- Pressed and hand folded – not bagged

Size: 16" x 28"

100% Cotton



## UTILITY TOWEL

- Low cost alternative to disposable towels
- 50% more absorbent than competition
- Hand folded – not bagged

Size: 16" x 20"  
100% Cotton Herringbone Weave



---

## TINT TOWEL

- Heavy weight construction
- 100% more absorbent than competition
- Hand folded – not bagged

Size: 17" x 20"  
Polyester/Cotton Blend Terrycloth



## BEAUTY STEAMER

- Heavy weight construction
- 50% more absorbent than competition
- Hand folded – not bagged

Size: 15" x 26"

Polyester/Cotton Blend Terrycloth



## BEAUTY / BARBER TOWEL

- Heavy weight construction
- Available in 2 sizes
- Pressed and hand folded – not bagged

Sizes:           15" x 25" Barber  
                  15" X 30" Beauty

100% Cotton  
Huck Towel





## WASH CLOTH

- Heavy weight construction
- Hand folded – not bagged

Size: 12" x 12"  
100% Cotton Terrycloth



white

---

## BATH TOWEL

- Heavy weight construction
- Hand folded – not bagged

Size: 22" x 44"  
Polyester/Cotton Blend Terrycloth



white

## DOCTOR / HAND TOWEL

- Heavy weight construction
- Pressed and hand folded – not bagged

Size: 15" x 30"

100% Cotton  
Huck Towel



## SURGICAL TOWEL

- Heavy weight construction
- Pressed and hand folded – not bagged

Size: 15" x 30"  
100% Cotton



## SHOP TOWEL

- Heavy weight construction
- 50% more absorbent than competition
- Hand folded – not bagged

Size: 16" x 20"  
100% Cotton Herringbone



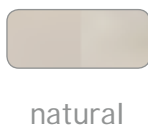
---

## HAZARDOUS UTILITY TOWEL

- First use towel – low lint content
- 50% more absorbent than competition
- Hand folded – not bagged

Regular  
Size: 16" x 20"  
100% Cotton Herringbone

Large  
Size: 16" x 31"  
100% Cotton Herringbone





## INK TOWEL

- Heavy weight construction
- 50% more absorbent than competition
- Hand folded – not bagged

Regular

Size: 16" x 20"

100% Cotton Herringbone

Large

Size: 16" x 31"

100% Cotton Herringbone



## MICROFIBER TOWELS - INDUSTRIAL

- Heavy weight construction
- Reduced lint towel
- Hand folded – not bagged

Size: 16" x 16"

Microfiber



black

## AREA PROTECTION MAT

- Holds 50% more water and dirt than competition
- Solution-dyed yarn for consistent color
- Cleated 90 mil Nitrile Rubber backing to avoid movement
- Hand rolled and individually inspected

Sizes: 2' x 3', 3' x 5', 4' x 6', 3' x 10'

100% Nitrile Rubber Backing with  
Static Dissipative Twisted Nylon Yarn

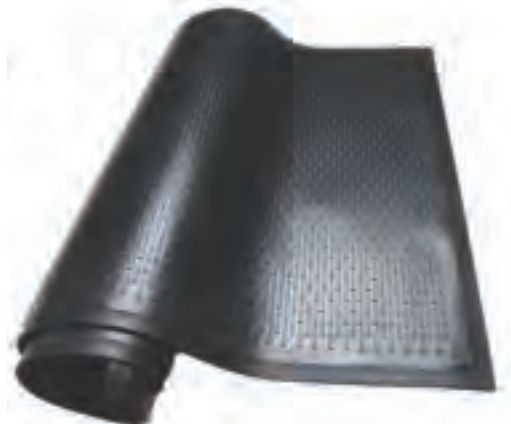


## SCRAPER MAT

- First line of defense against dirt, dust, rain, and snow
- Holds up to 1 lb. of dirt and 1 gallon of water
- Two-way universal scraping action

Size: 3' x 5'

Nitrile Rubber Blend



## CUSTOM LOGO MATS

- Completely customized based on customer artwork
- Great for branding and messaging
- Cleated Nitrile Rubber backing to avoid movement

Sizes: 2' x 3', 3' x 5', 4' x 6', 3' x 10'

100% Nitrile Rubber Backing with Static Dissipative Twisted Nylon Yarn



## MESSAGE MATS

- Safety, greeting, and quality messages
- Solution-dyed yarn for consistent color
- Cleated Nitrile Rubber backing to avoid movement

Size: 3' x 5'

100% Nitrile Rubber Backing with Static Dissipative Twisted Nylon Yarn



## ANTI FATIGUE MATS

- Flo-thru design
- Beveled edges
- Great for workstations where operator needs to move around

Size: 3' x 5'  
Nitrile Rubber Blend

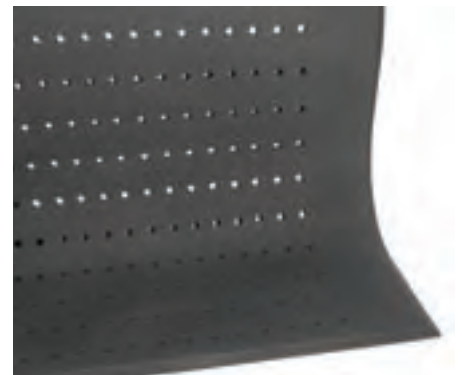


black

## COMFORT MATS

- Flo-thru design
- Beveled edges
- Great for stationary workstations

Size: 2' x 3'  
100% Nitrile Rubber



black

## FENDER/SEAT COVER

- Protects vehicle interior and exterior
- Soft cloth - not rubber or vinyl
- Hand folded - not bagged

Size: 36" x 56"

Acrylic/Cotton Blend



## RENTAL/TERRY RAGS

- Avoid abuse charges by purchasing rags
- Domestic will safely dispose of used rags



pink

## WET MOP SERVICE

- Looped ends to avoid fraying
- Banded construction to reduce floor care labor
- Anti-microbial design

Size: 24" long with 9" head band  
Synthetic Blend



green

## FRAMED DRY MOP

- Anti microbial barricade treatment
- Infinity twist to reduce floor care labor
- Holds up to 1 lb. of dirt for every 30"
- Pre-framed for ease of use

Sizes: 18", 24", 36", 48", 60"  
Cotton/Synthetic Blend



blue



red



orange



green



blue



## CLENCHEW WET MOP HANDLE

- Durable nylon jaws securely grip wide headbands
- Soiled mops can be removed without touching them
- Plastic assembly will not rust or support bacterial growth
- Fiberglass handle to avoid spread of bacteria



---

## QUIK - CHANGE DRY MOP HANDLE

- Fiberglass handle to resist the accumulation of bacteria
- Durable metal jaws securely grip dry mops



## TWIN TOILET TISSUE DISPENSER

- Replacement roll stored within dispensing unit in stall
- Two-ply design
- Locked dispensing system to reduce theft

Size: 10" H x 5.3" D x 15.5" W  
Impact Resistant ABS Plastic



---

## CENTERPULL HAND TOWEL DISPENSER

- One sheet per pull – reduces paper waste
- Centerpull design prevents cross-contamination
- Locked dispensing system to reduce theft
- Two-ply design

Size: 13.5" H x 9.8" D x 9.5" W  
Impact Resistant ABS Plastic



## CONTINUOUS ROLL TOWEL CABINET

- Eliminates waste removal costs associated with paper
- 2 Compartment design for separation of clean and soiled towel

Size: 29.5" H x 9" D x 15" W



## CLOTH ROLL TOWEL

- Most cost effective hand drying option
- All rolls are sanitized and pressed each delivery
- Environmentally friendly

Size: 11" x 38 yard roll  
95% Polyester / 5% Cotton



## MIST AIR DEODORIZER

- Each unit will control odors over a 2000 square-foot space
- Releases odor control agent every 15 minutes automatically

Size: 9.5" H x 3.25" D x 3.75" W  
Plastic



## FAN AIR DEODORIZER

- Fan system deodorizes 24 hours a day — 7 days a week
- Each unit will control odors over a 1000 square-foot space

Size: 7.7" H x 3.53" D x 3.37" W  
Plastic



## FOAM SOAP DISPENSER

- Anti-bacterial soap made with lanolin to prevent drying of skin
- Refilled weekly by service personnel
- Available in manual or hands-free design

Size: 1000 ml dispenser  
Plastic



white



## FOAM HAND SANITIZER DISPENSER

- Kills 99.99% of most common germs without water or towels
- Refilled weekly by service personnel
- Available in manual or hands-free design

Size: 1000 ml dispenser  
Plastic



white



## GRIT SOAP DISPENSER

- Waterless application
- Made with moisturizers to prevent drying of skin
- Refilled weekly by service personnel

Size: 1.5 Gallon dispenser  
Plastic





white





We've been helping the American workforce dress for success for over 90 years.

  [DomesticUniform.com](http://DomesticUniform.com)

