

DOUGLAS

DOUGLAS COLLEGE

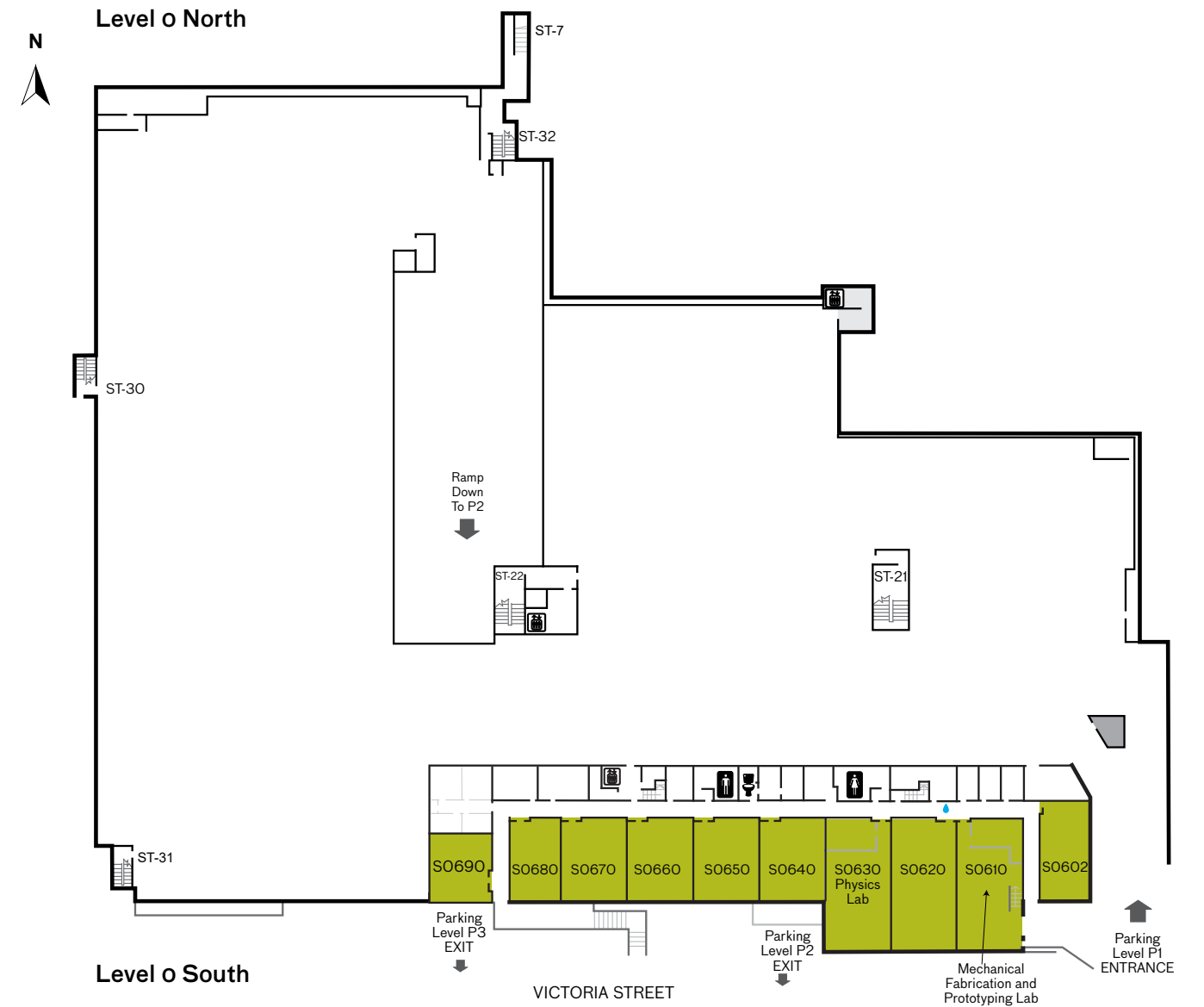
CAMPUS GUIDE

**NEW WESTMINSTER CAMPUS
ANVIL OFFICE TOWER
2021-2022**


douglascollege.ca



o600 and Parking Level P1 Floor Plan New Westminster Campus

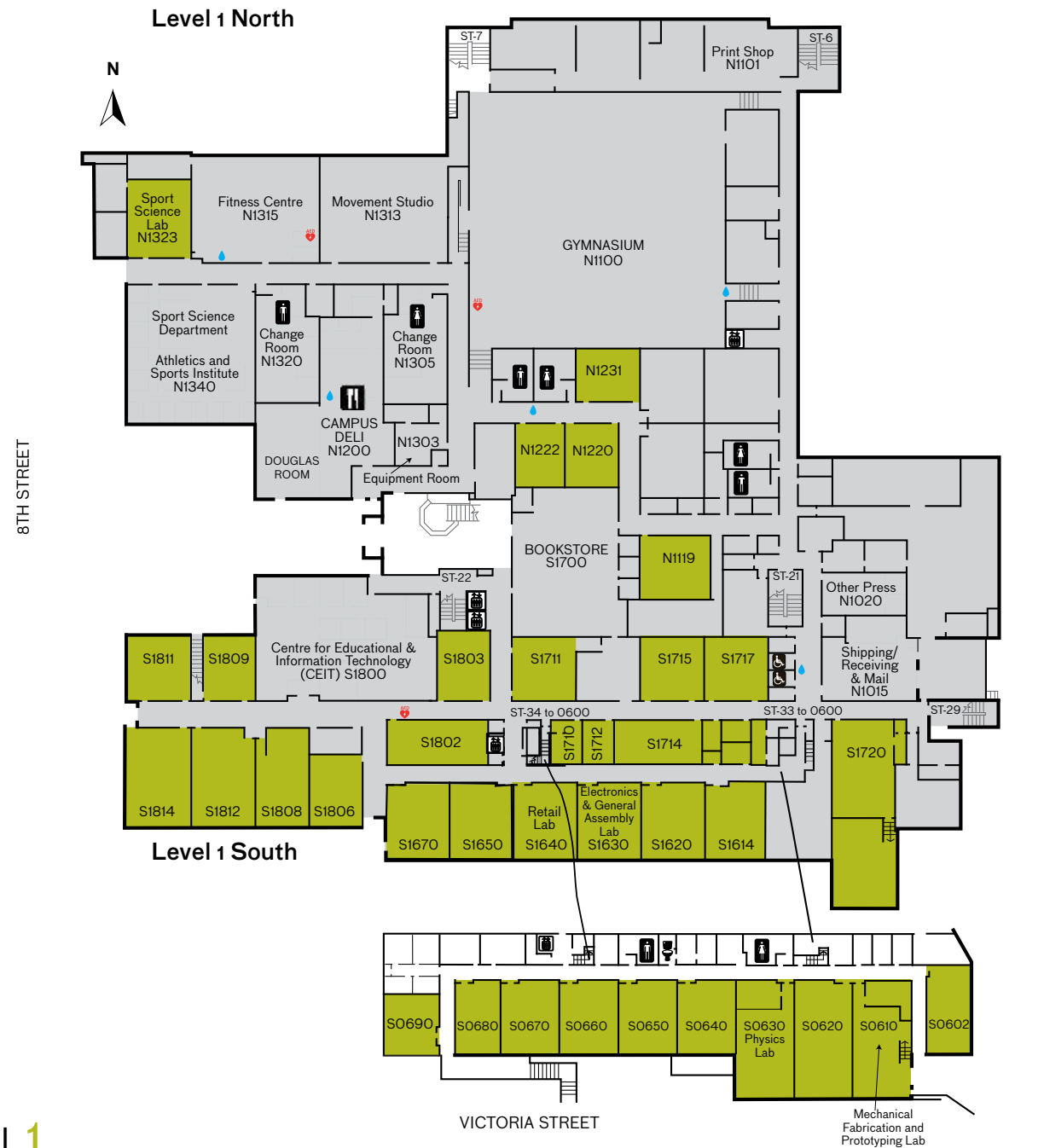


LEVEL **Zero** / PARKING LEVEL 1

- s0610 Mechanical Fabrication and Prototyping Lab
- s0630 Physics lab
-  Water Fill Station

Zero and First Floor New Westminster Campus

ROYAL AVENUE

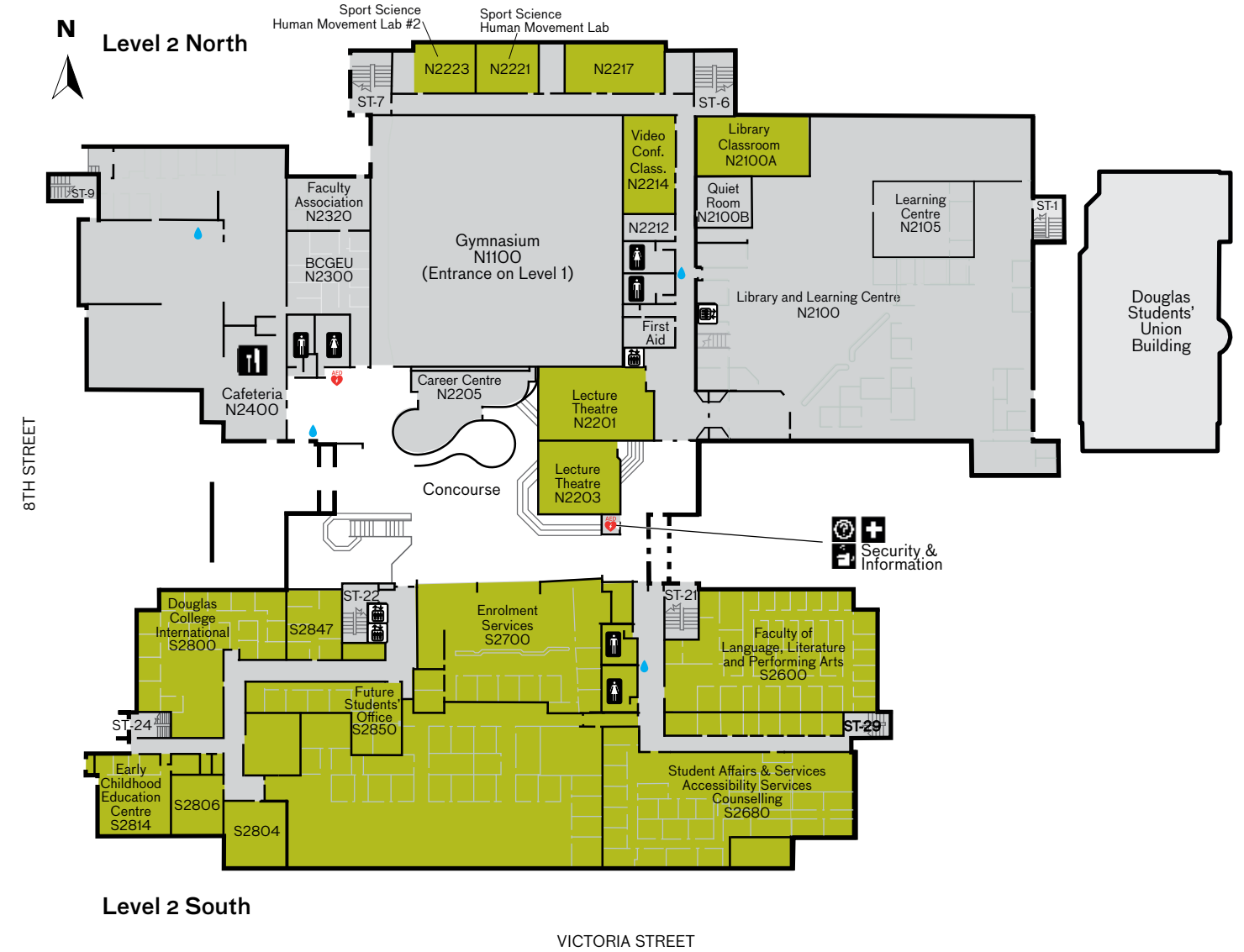


LEVEL 1

N1015	Shipping/Receiving & Mail	S0610	Mechanical Fabrication and Prototyping Lab
N1020	Other Press	S0630	Physics Lab
N1100	Gymnasium	S1640	Retail Lab
N1101	Print Shop	S1700	Bookstore
N1200	Campus Deli/Douglas Room	S1800	Centre for Educational & Information Technology (CEIT)
N1305	Change room		
N1313	Movement Studio		
N1315	Fitness Centre		Water Fill Station
N1320	Men's change room		AED Location
N1323	Sport Science Lab		
N1340	Sport Science Department		
N1340	Athletics and Sports Institute		

Second Floor New Westminster Campus

ROYAL AVENUE



LEVEL 2

N1100	Gymnasium	N2400	Cafeteria
N2100	Library and Learning Centre	S2600	Faculty of Language, Literature and Performing Arts
N2105	Learning Centre	S2680	Student Affairs & Services
N2201	Lecture Theatre		Accessibility Services
N2203	Lecture Theatre		Counselling
N2205	Career Centre	S2700	Enrolment Services
N2203A	Security Kiosk	S2800	Douglas College International
N2221	Sport Science Human Movement Lab	S2814	Early Childhood Education Centre
N2223	Sport Science Human Movement Lab #2	S2850	Future Students' Office
N2300	BCGEU		Water Fill Station
N2320	Faculty Association (DCFA)		AED Location

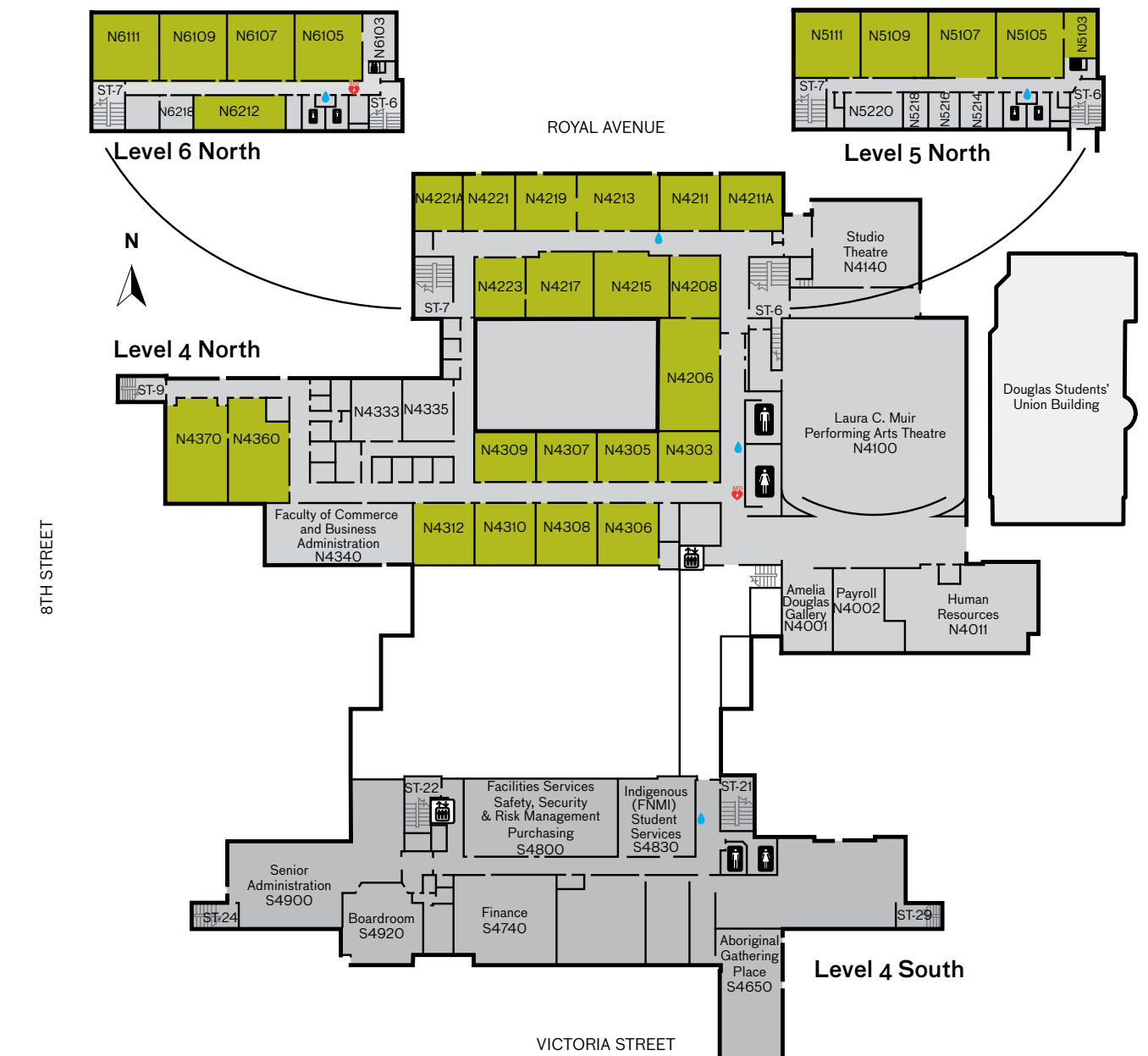
Third Floor New Westminster Campus



LEVEL 3

N3100	Academic Technology Services	S3603	Language Lab
N3200	Faculty of Language, Literature and Performing Arts	S3710, S3712	Biology Lab
N3220	Music Lab	S3720	
N3221	Studio B/Rehearsal	S3730, S3740	Chemistry Lab
N3219	Studio B Control	S3805	Earth and Environmental Sciences
N3260	Dance Studio	S3810	Earth and Environmental Sciences Lab
N3272	Media Lab	S3900	Faculty of Science and Technology
N3285	Studio A/Band Room	S3910	Math Lab
N3290	Stagecraft Workshop		Water Fill Station
N3330, N3400	Faculty of Humanities and Social Sciences		AED Location
N3467	Geography Lab		
N3475	Psychology Lab		

Fourth, Fifth and Sixth Floor New Westminster Campus





LEVELS 4, 5 & 6

N4001	Amelia Douglas Gallery	S4650	Aboriginal Gathering Place
N4002	Payroll	S4740	Finance
N4011	Human Resources	S4800	Facilities Services; Safety, Security & Risk Management; Purchasing
N4100	Laura C. Muir Performing Arts Theatre	S4830	Indigenous (FNMI) Student Services
N4140	Studio Theatre	S4900	Senior Administration
N4340	Faculty of Commerce and Business Administration	S4920	Boardroom
			Water Fill Station
			AED Location

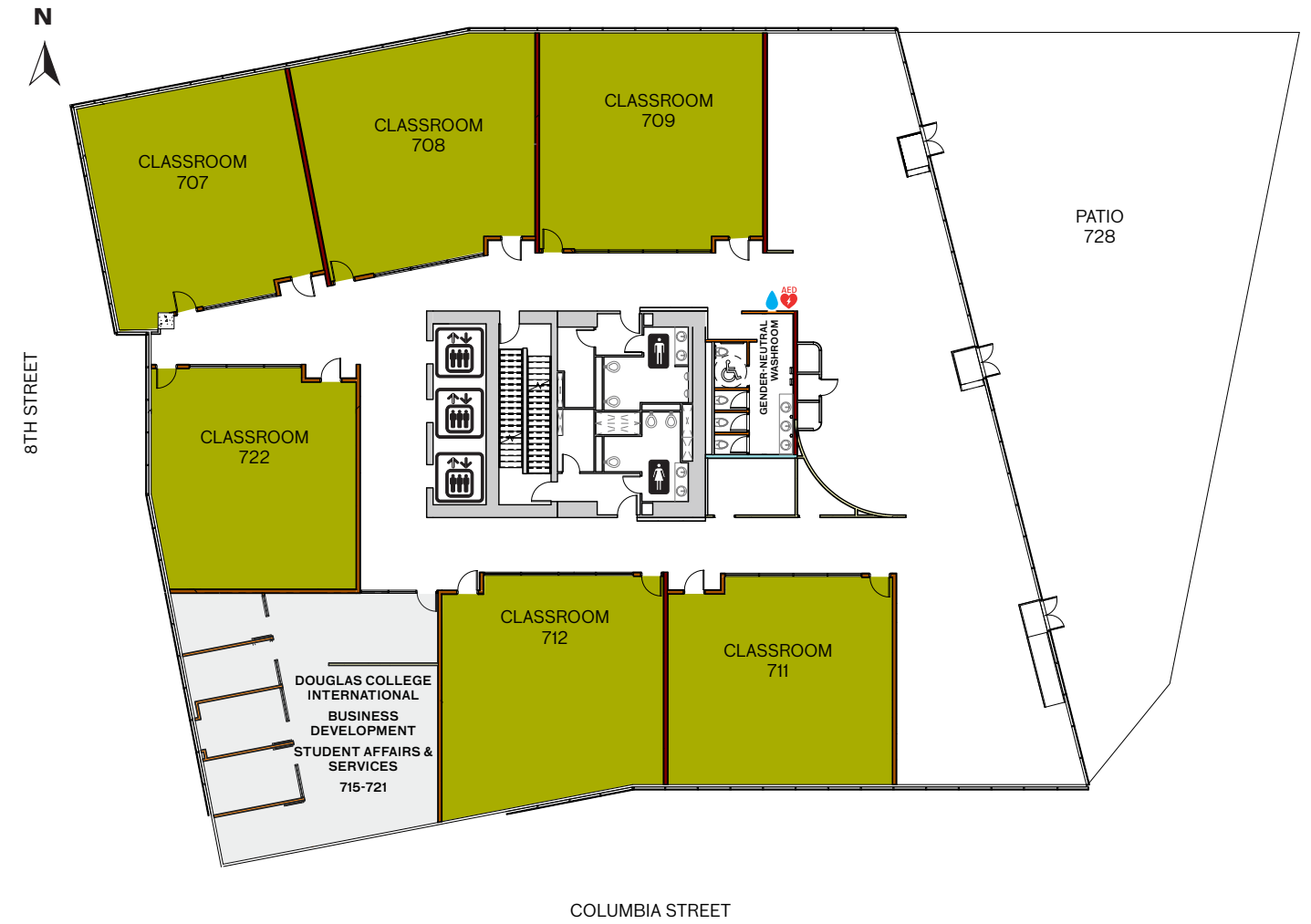
Sixth Floor Anvil Office Tower





ANVIL 6th FLOOR

- 639 Security
- 627-638 Faculty of Commerce and Business Administration
-  Water Fill Station
-  AED Location

Seventh Floor Anvil Office Tower



ANVIL 7th FLOOR

- 715-721 Douglas College International Business Development Student Affairs & Services
-  Water Fill Station
-  AED Location

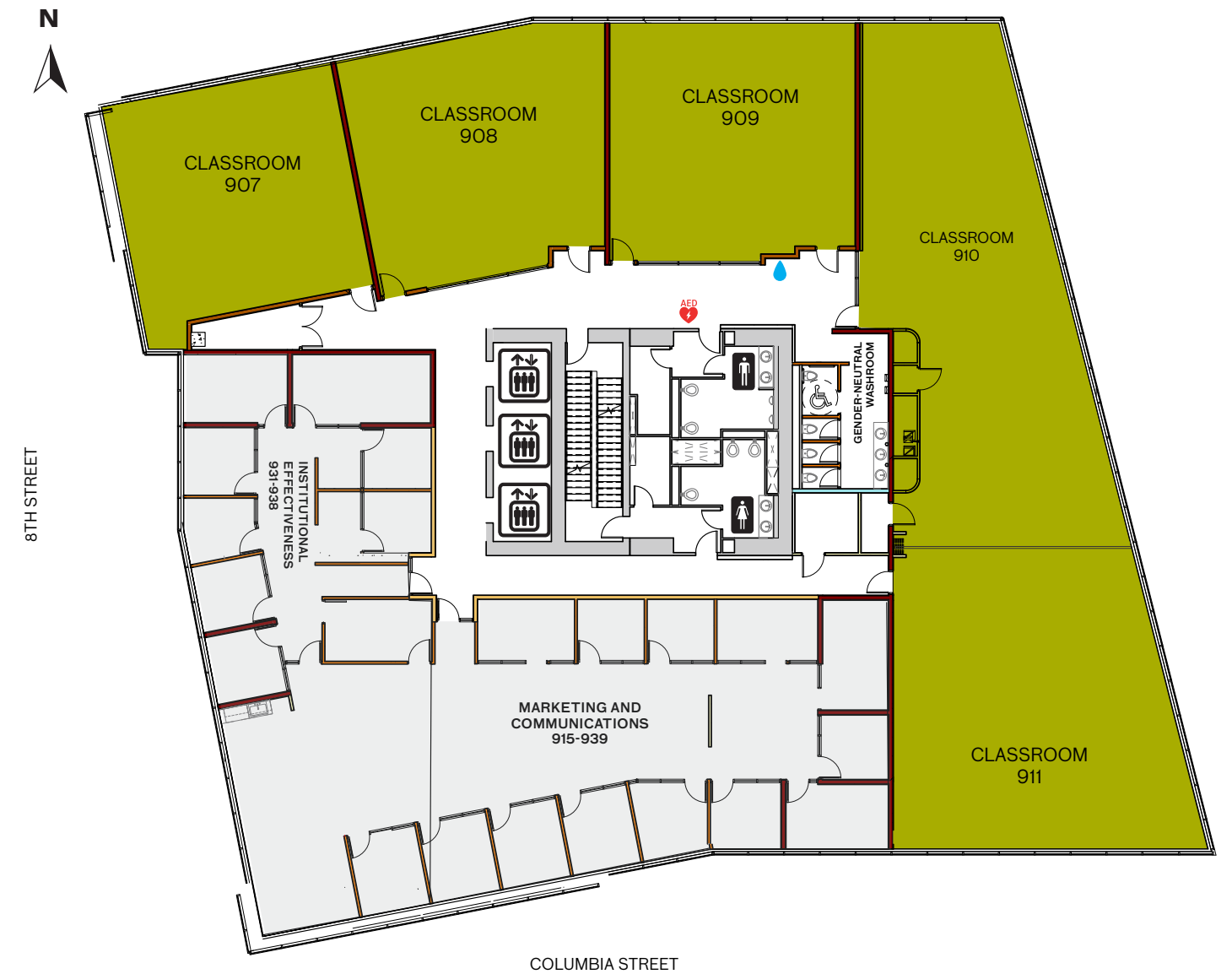
Eighth Floor Anvil Office Tower



ANVIL 8th FLOOR

817-837 Faculty of Commerce and Business
Administration
Water Fill Station
AED Location

Ninth Floor Anvil Office Tower



ANVIL 9th FLOOR

915-939 Marketing and Communications
931-939 Institutional Effectiveness
Water Fill Station
AED Location



CAMPUS STREET ADDRESSES

700 Royal Avenue (at Eighth Street), New Westminster, B.C.
Anvil Office Tower: 11 Eighth Street, Floors 6-9,
New Westminster, B.C.

MAILING ADDRESS (FOR ALL CAMPUSES)

PO Box 2503, New Westminster, B.C., V3L 5B2

CENTRAL SWITCHBOARD

604 527 5400

CAMPUS HOURS

Monday to Friday	6:30am-11pm
Saturday	6:30am-7pm
Sunday	8am-6pm (limited access*)
Holidays	Limited access*

* Access at Level 2 by Security. Valid and current Douglas College ID must be shown to Security. Only applies to New Westminster Campus.

ACCESS FOR VISITORS OR STUDENTS WITH DISABILITIES

Reserved parking for people with disabilities is available in the above ground and underground parking lots at the New Westminster Campus. Public paid parking is available at Anvil.

INFORMATION

Inquiries should be made at Security in the Concourse (second level) at the New Westminster Campus and on the 6th floor at Anvil.

ROOM NUMBERS

The New Westminster Campus is divided into two blocks, North and South. Each room number precedes with the floor number; Anvil occupies floors 6-9. Classrooms at the New Westminster Campus and Anvil are labelled in green on these maps.

FOOD SERVICE

Meals and snacks are available in the cafeteria located on the north-west side of the Concourse (second floor) or at the Campus Deli on the north-west side of the Concourse (first floor).

SMOKE-FREE CAMPUS

Douglas College is a smoke-free campus. The policy prohibits smoking, vaping and chewing tobacco on all Douglas College campuses and sites, including parkades.

SECURITY

For all fire, police, ambulance and/or first aid emergencies, contact Campus Security. Security and First Aid Kiosk at the New Westminster Campus are located in the Concourse (second floor) and on the 6th floor at Anvil. From internal College telephones, call local 2400 or 604 527 5405 or 604 218 4925 (cell).