

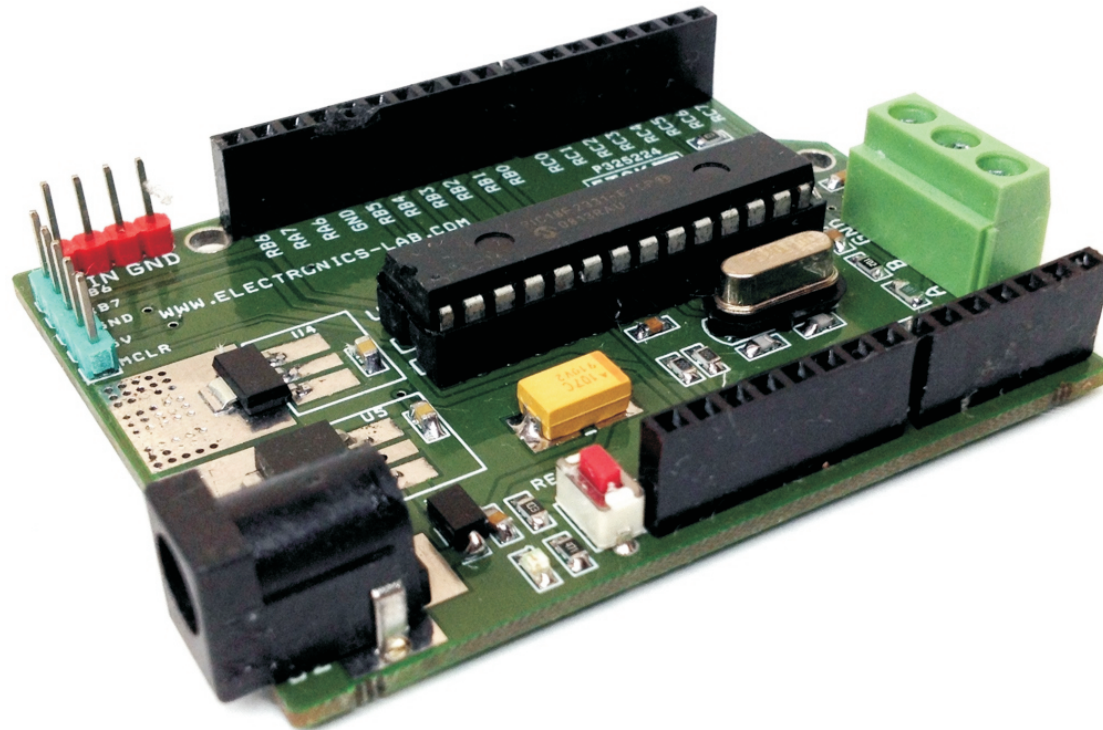
Motor PIC Arduino

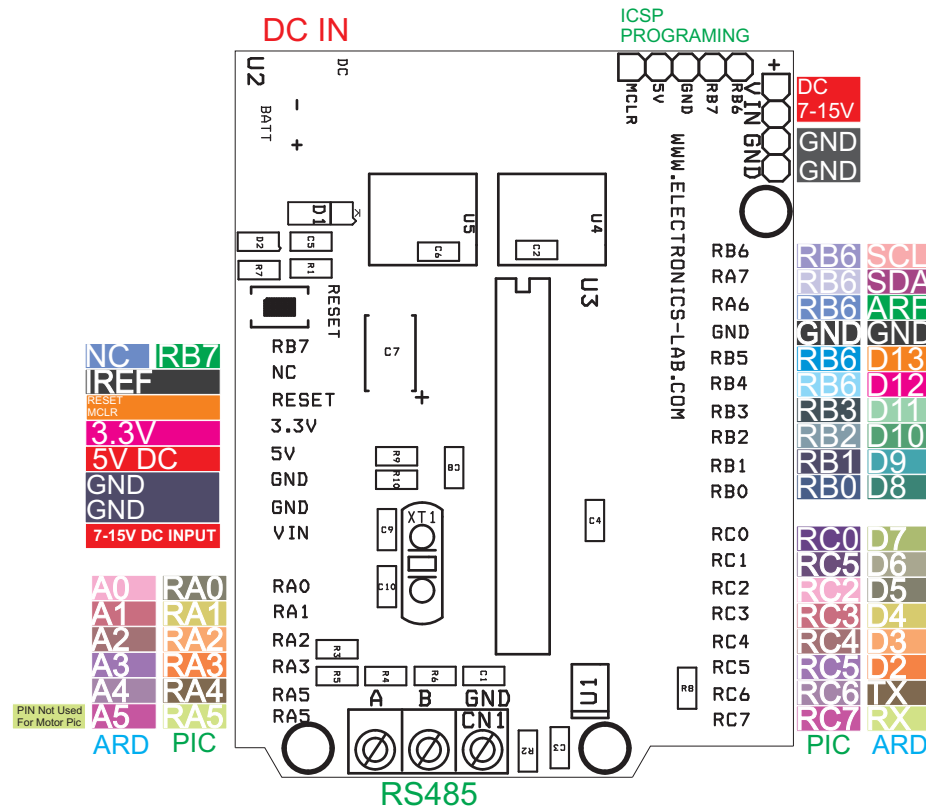
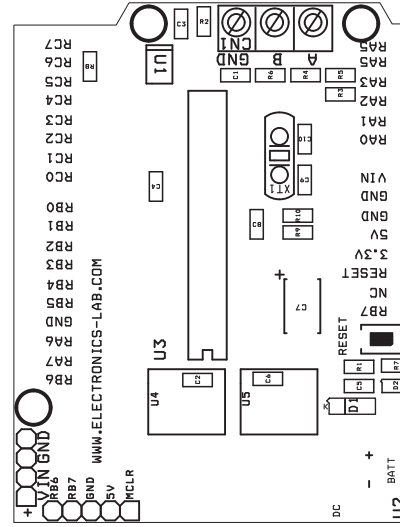
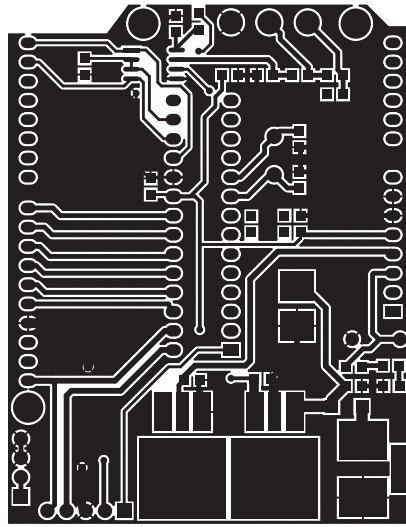
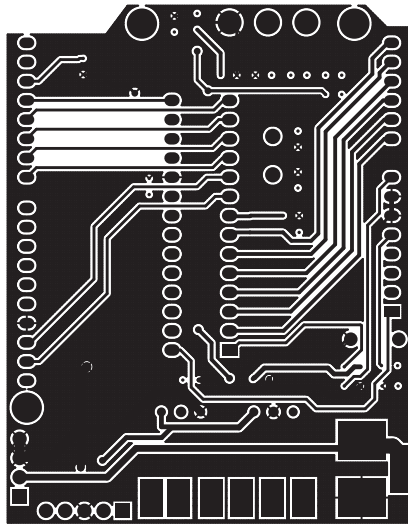
The board created for makers, who wants to use various Arduino UNO shield but with PIC micro-controllers from Micro-Chip, board facilitates to use any 28 PIN DIP PIC micro-controllers with crystal or without crystal, Omit Y1 , C9 and C10 in case of internal oscillator . Project also can be used to develop RS485 application with help of on board SN75176 IC. Two regulators provide 3.3V and 5V DC outputs. ICSP connector provided to program the PIC IC using PICKIT2/PICKIT3 programmer. On board DC jack connector and additional CN2 Header connector helps to power up the board. Input supply 7V-15V DC. This board has been tested using PIC16F886 IC. The board also supports PIC18F2331 and PIC18F2431 PICs mainly developed for Motor applications, Solder R9 and C8 if Motor PICs are used or left open for normal micro-controllers. Switch 1 helps to reset the board. Refer PCB top layout for Arduino to Micro-Chip Pin configuration.

Note : Kindly Mount following components to use this board for Motor PICs PIC18F2331 and PIC18F2431

Features

- Supply 7-15V DC
- CN3 ICSP Connector for Programming
- SW1 Reset Switch
- CN4 DC Jack – DC Supply Input
- CN2 DC Supply Input





BOM			
SR.	QNTY.	REF.	DESC.
1	1	CN1	3 PIN SCREW TERMINAL
2	1	CN2	4 PIN HEADER CONNECTOR
3	1	CN3	5 PIN HEADER CONNECTOR
4	1	CN4	DC JACK
5	4	C1,C3,C4,C8	0.1uF SMD 0805
6	2	C2,C6	10uF SMD 0805
7	1	C5	1uF SMD 0805
8	1	C7	100uF SMD 2512
9	2	C9,C10	22PF SMD 0805
10	1	D1	SM4007 SMD
11	1	D2	LED SMD 0805 RED
12	2	R1,R8	10K SMD 0805
13	2	R2,R6	1K SMD 0805
14	2	R3,R4	10E SMD 0805
15	1	R5	120E SMD 0805
16	1	R7	470E SMD 0805
17	1	R9	1E SMD 0805
18	1	R10	0E SMD 0805
19	1	SW1	SW SMD TACT SWITCH
20	1	U1	SN75176 SMD SO8
21	1	U2	ARDUINO UNO R3
22	1	U3	PIC18F2431 DIP
23	1	U4	LM1117-3.3V
24	1	U5	LM78M05 DPAK
25	1	Y1	10Mhz



