



Seamless Gutters

PRODUCT CATALOG

For over 50 years Englert has been a pioneer in the seamless gutter industry. Today, we remain an innovator and supplier of seamless gutters, accessories and roll forming machines throughout the country.

Englert's history of quality, service and innovation is backed by our unique ability to provide service and technical support on everything we sell. Rest assured that with Englert as your supplier, you'll always enjoy a high level of ongoing support well after the sale. Our strategically located offices allow us to provide efficient, economical, and timely deliveries.

On top of this, add Englert's experienced customer service team, talented marketing support group and knowledgeable machine technicians, and you have a company behind you that is ready to support and partner at a level that is uncommon in the industry.

ASSOCIATION MEMBERSHIPS AND TESTING ORGANIZATION



90091U

Gutter Machines
Gutter Coil
Gutter Accessories

Gutter System Components

- 1 Aluminum Coil
- 2 Aluminum Coil(Mini)
- 3 Aluminum Trim Coil
- 4 Aluminum Downspout
- 5 Aluminum 30" Elbow
- 6 Aluminum Zig Zag Elbow 2"x3"
- 7 Aluminum B Elbow 2"x3"
- 8 Aluminum Zig Zag Elbow 3"x4"
- 9 Aluminum Elbow 2"x3"
- 10 Aluminum End Cap
- 11 Aluminum Mitre Strip
- 12 Aluminum Mitre Bay
- 13 Aluminum Mitre Box: Outside
- 14 Aluminum Mitre Box: Inside
- 15 Aluminum Hanger with Screw
- 16 Aluminum Hanger SS T Bar
- 17 Aluminum Hanger no Screw
- 18 Gutter Attachment: Fasteners, Screws
- 19 Touch Up Paint
- 20 Caulking and Sealants
- 21 Gutter Tools
- 22 MicroGuard™ Gutter Screen
- 23 SureGuard™ Gutter Screen
- 24 Aluminum Downspout: U Clip
- 25 Aluminum Downspout: Pipeband
- 26 Aluminum Downspout: Cleats
- 27 Aluminum Funnel Leader Head
- 28 Aluminum Gutter Wedge
- 29 PVC Drain Adapter
- 30 Aluminum Outlets

Table of Contents

- 4 Gutter Coil
- 5 Gutter Coil/Trim Coil
- 6 Downspouts
- 7 End Caps
- 8 Elbows
- 10 Mitres
- 12 Hangers
- 14 Fasteners
- 16 Accessories
- 18 Leaf Protection
- 20 Forming Tools
- 21 Metal Man Gutter Machines
- 26 Architectural Guide Specifications
- 27 Purchasing Tips
- 28 Maintenance Tips
- 29 Credit Application
- 31 Gutter Coil Thickness Chart

Gutter System Components



Custom Gutter Colors

Englert gutters are painted on our own in-house coil coating line – one of the most technically advanced paint lines in the industry under the supervision of experienced craftsmen.

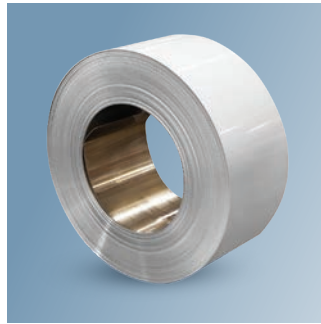
All Englert gutters are coated with our proprietary two coat paint system that resists dirt adhesion, is easy to clean and provides excellent color retention.

Choose from a selection of vibrant colors!*



* Printing processes vary – the colors above are printed in ink and may not represent the actual painted coil color – please contact your local Englert representative and request a color card or actual color chips before ordering.

GUTTER COILS

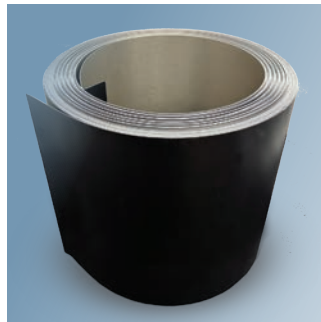


Aluminum Gutter Coils 5"

- Polyester paint finish
- 20 year pro-rated finish warranty
- Cut to length coil (where available)

Aluminum Gutter Coils 6"

- Available in .027" and .032" gauge
- Polyester paint
- 20 year pro-rated finish warranty
- Cut to length coil (where available)



Aluminum Gutter Coils 6"

- Mini (Boxed) Coils**
- Available in 150 ft. rolls (boxed) in .032" gauge only
 - All colors except white available
 - Polyester paint
 - 20 year pro-rated finish warranty

Aluminum Gutter Coils 5"

- Mini (Boxed) Coils**
- Available in 150 ft. rolls (boxed) in .032" gauge
 - All colors except white available
 - Polyester paint
 - 20 year pro-rated finish warranty

Aluminum Gutter Coils 5" (11¾" wide)

Part No.	Color Combo	.027" Gauge	.032" Gauge	Coil Qty.
00335B	Hi Gloss	•		1 roll
00335I	Brown/Ivory	•		1 roll
00335L	Lo Gloss	•		1 roll
00335W	Eggshell/Wicker	•		1 roll
00335M	Light Gray/Musket	•		1 roll
00338Y	Cream/Clay	•		1 roll
00338Z	Dark Gray/Bronze	•		1 roll
00334B	Hi Gloss		•	1 roll
00334I	Brown/Ivory		•	1 roll
00350L	Low Gloss		•	1 roll
00334W	Eggshell/Wicker		•	1 roll
00350M	Light Gray/Musket		•	1 roll
00350Y	Cream/Clay		•	1 roll
00350Z	Dark Gray/Bronze		•	1 roll
00334E	Black		•	1 roll

Aluminum Gutter Coils 6" (15" wide)

Part No.	Color Combo	.027" Gauge	.032" Gauge	Coil Qty.
00356B	Hi Gloss	•		1 roll
00356I	Brown/Ivory	•		1 roll
00356E	Lo Gloss	•		1 roll
00356W	Eggshell/Wicker	•		1 roll
00355M	Light Gray/Musket	•		1 roll
00355D	Cream/Clay	•		1 roll
00356K	Dark Gray/Bronze	•		1 roll
00357B	Hi Gloss		•	1 roll
00357I	Brown/Ivory		•	1 roll
00355L	Low Gloss		•	1 roll
00357W	Eggshell/Wicker		•	1 roll
00358M	Light Gray/Musket		•	1 roll
00357Y	Cream/Clay		•	1 roll
00357E	Black		•	1 roll
00355Z	Dark Gray/Bronze		•	1 roll

Aluminum Gutter Coils 6" (15" wide) Mini (Boxed) Coils 150'

Part No.	Color Combo	.032" Gauge	Coil Qty.
00752I	Brown/Ivory	•	1 roll
00752W	Eggshell/Wicker	•	1 roll
00752M	Light Gray/Musket	•	1 roll
00752Y	Cream/Clay	•	1 roll
00752G	Dark Gray/Bronze	•	1 roll
00752E	Black	•	1 roll

Aluminum Gutter Coils 5" (11-3/4" wide) Mini (Boxed) Coils 150'

Part No.	Color Combo	.032" Gauge	Coil Qty.
00758I	Brown/Ivory	•	1 roll
00758W	Eggshell/Wicker	•	1 roll
00758T	Light Gray/Musket	•	1 roll
00758Y	Cream/Clay	•	1 roll
00758X	Dark Gray/Bronze	•	1 roll
00758E	Black	•	1 roll

TRIM COILS



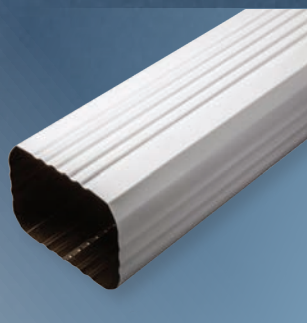
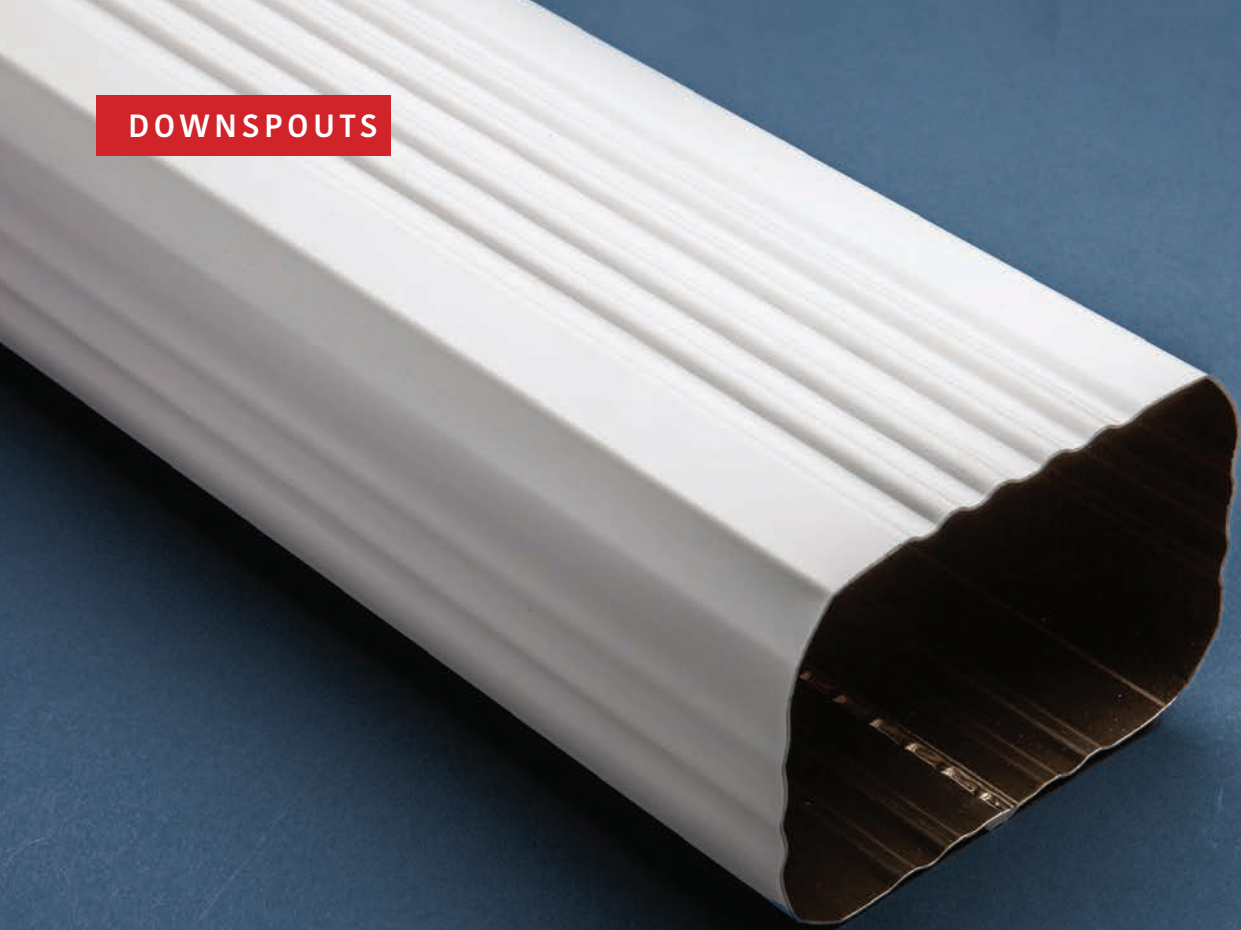
Aluminum Trim Coils .019" (50 Ft. Boxed Rolls)

Part No.	Color Combo	24" Width	Length/Ft.	Coil Qty.
00708C	White/White	•	50'	1 roll
00708L	Bronze/White	•	50'	1 roll
00708A	Brown/White	•	50'	1 roll
00704E	Black/Brown	•	50'	1 roll
00705E	Black/White	•	50'	1 roll
00708B	PVC/White	•	50'	1 roll
00700H	Txt Ivory/Txt Light Gray	•	50'	1 roll
00700K	Txt Coal Gray/Txt Musket	•	50'	1 roll
00700L	Txt White/Txt Brown	•	50'	1 roll
00700R	Txt Green/Txt Red	•	50'	1 roll
00700S	Txt Eggshell/Txt Wicker	•	50'	1 roll
00700T	Txt Terratone/Txt Tan	•	50'	1 roll
00700Y	Txt Cream/Txt Clay	•	50'	1 roll



- Aluminum Trim Coils**
- 24" x 50' roll polyester finish and textured trim coil
 - 24" x 50' roll PVC white only

DOWNSPOUTS



Aluminum Downspouts 2"x3"
• Available in .019" gauge
all colors

Aluminum Downspouts 3"x4"
• Available in .019" gauge
all colors

Aluminum Downspouts 2"x3"

Color	Part No.	.019" Gauge	Length/Ft.	Box Qty.
Hi Gloss White	00110B	•	10'	100 pcs.
Brown	00110C	•	10'	100 pcs.
Clay	00110D	•	10'	100 pcs.
Light Gray	00110H	•	10'	100 pcs.
Black	00110F	•	10'	100 pcs.
Dark Gray	00110K	•	10'	100 pcs.
Ivory	00110I	•	10'	100 pcs.
Lo Gloss	00110L	•	10'	100 pcs.
Musket	00110M	•	10'	100 pcs.
Cream	00110N	•	10'	100 pcs.
Wicker	00110W	•	10'	100 pcs.
Bronze	00110Z	•	10'	100 pcs.
Eggshell	00110S	•	10'	100 pcs.

Aluminum Downspouts 3"x4"

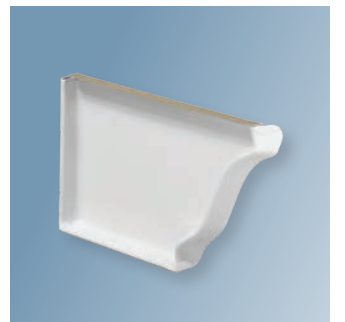
Color	Part No.	.019" Gauge	Length/Ft.	Box Qty.
Hi Gloss	00115B	•	10'	100 pcs.
Brown	00115C	•	10'	100 pcs.
Clay	00115D	•	10'	100 pcs.
Light Gray	00115H	•	10'	100 pcs.
Black	08315E	•	10'	100 pcs.
Dark Gray	00115K	•	10'	100 pcs.
Ivory	00115I	•	10'	100 pcs.
Lo Gloss	00115L	•	10'	100 pcs.
Musket	00115M	•	10'	100 pcs.
Cream	00115N	•	10'	100 pcs.
Wicker	00115W	•	10'	100 pcs.
Bronze	00115Z	•	10'	100 pcs.
Eggshell	00116S	•	10'	100 pcs.

END CAPS

Aluminum End Caps 5"

Gauge .027"

Color	(L)Part No.	(R)Part No.	Box Qty.
Hi Gloss	00130B	00131B	60 pcs.
Brown	00130C	00131C	60 pcs.
Lo Gloss	00130L	00131L	60 pcs.
Clay	00130D	00131D	60 pcs.
Light Gray	00133H	00132H	60 pcs.
Black	00130A	00131A	60 pcs.
Ivory	00130I	00131I	60 pcs.
Dark Gray	00130K	00131K	60 pcs.
Musket	00130M	00131M	60 pcs.
Cream	00130S	00131S	60 pcs.
Eggshell	00133S	00132S	60 pcs.
Wicker	00133W	00132W	60 pcs.
Bronze	00130Z	00131Z	60 pcs.



Aluminum End Caps 5"
• Available in .027" gauge
all colors L and R

Aluminum End Caps 6"

Color	(L)Part No.	(R)Part No.	Box Qty.
Hi Gloss	00136B	00137B	36 pcs.
Brown	00136C	00137C	36 pcs.
Lo Gloss	00136L	00137L	36 pcs.
Clay	00136D	00137D	36 pcs.
Light Gray	00136H	00137H	36 pcs.
Black	00136A	00137A	36 pcs.
Dark Gray	00136K	00137K	36 pcs.
Ivory	00136I	00137I	36 pcs.
Musket	00136M	00137M	36 pcs.
Cream	00136N	00137N	36 pcs.
Wicker	00136W	00137W	36 pcs.
Bronze	00136Z	00137Z	36 pcs.
Eggshell	00136S	00137S	36 pcs.



Aluminum End Caps 6"
• Available in .027" gauge
all colors L and R



Aluminum Elbows 2"x3"

Color	Part No./Style A	Part No./Style B	Gauge .019"	Box Qty.
Hi Gloss	00120B	00127B	•	32 pcs.
Brown	00120C	00127C	•	32 pcs.
Clay	00120D	00127D	•	32 pcs.
Light Gray	00120H	00127H	•	32 pcs.
Black	00120A	00127A	•	32 pcs.
Dark Gray	00120K	00127K	•	32 pcs.
Ivory	00120I	00127I	•	32 pcs.
Lo Gloss	00120L	00127L	•	32 pcs.
Musket	00120M	00127M	•	32 pcs.
Cream	00120N	00127N	•	32 pcs.
Wicker	00120W	00127W	•	32 pcs.
Bronze	00120Z	00127Z	•	32 pcs.
Eggshell	00120S	00127S	•	32 pcs.

Aluminum Elbows 3"x4"

Color	Part No.		Gauge .019"	Part No.	
	Style A	Style B		Style A	Style B
Hi Gloss	00121B	00123B	•	32 pcs.	30 pcs.
Brown	00121C	00123C	•	32 pcs.	30 pcs.
Clay	00121D	00123D	•	32 pcs.	30 pcs.
Black	08316E	08317E	•	32 pcs.	30 pcs.
Light Gray	00121H	00123H	•	32 pcs.	30 pcs.
Ivory	00121I	00123I	•	32 pcs.	30 pcs.
Dark Gray	00121K	00123K	•	32 pcs.	30 pcs.
Lo Gloss	00121L	00123L	•	32 pcs.	30 pcs.
Musket	00121M	00123M	•	32 pcs.	30 pcs.
Cream	00121N	00123N	•	32 pcs.	30 pcs.
Eggshell	00121S	00123S	•	32 pcs.	30 pcs.
Wicker	00121W	00123W	•	32 pcs.	30 pcs.
Bronze	00121Z	00123Z	•	32 pcs.	30 pcs.



Aluminum B Elbow
2"x3" and 3"x4"

Aluminum Zig Zag Elbows 2"x3"

Color	Part No.	
	10.25 (1"-1/2" Offset) 12 Pcs.	12.75 (3" Offset) 25 Pcs.
Hi Gloss White	00167Z	00167Y
Brown	00186C	00167C
Clay	00186D	00166D
Black	00186E	00166E
Light Gray	00186H	00167H
Ivory	00186I	00167I
Dark Gray	00186K	00167K
Lo Gloss White	00186L	00166L
Musket	00186M	00167M
Cream	00186N	00167N
Eggshell	00186S	00167S
Wicker	00186W	00167W
Bronze	00186Z	00166Z

Aluminum Zig Zag Elbows 3"x4"

Color	Part No.	Box Qty.
High Gloss White	00187B	8 pcs.
Brown	00187C	8 pcs.
Clay	00187D	8 pcs.
Black	00187E	8 pcs.
Light Gray	00187H	8 pcs.
Ivory	00187I	8 pcs.
Dark Gray	00187K	8 pcs.
Lo Gloss White	00187L	8 pcs.
Musket	00187M	8 pcs.
Cream	00187N	8 pcs.
Eggshell	00187S	8 pcs.
Wicker	00187W	8 pcs.
Bronze	00187Z	8 pcs.

Aluminum 30° Elbows

Color	Elbows 2"x3"	Box Qty.	Elbows 3"x4"	Box Qty.
High Gloss White	08303B	40 pcs.	08119B	24 pcs.
Brown	08303C	40 pcs.	08119C	24 pcs.
Clay	08303D	40 pcs.	08119D	24 pcs.
Black	08303A	40 pcs.	08119A	24 pcs.
Light Gray	08303H	40 pcs.	08119H	24 pcs.
Ivory	08303I	40 pcs.	08119I	24 pcs.
Lo Gloss White	08303L	40 pcs.	08119L	24 pcs.
Musket	08303M	40 pcs.	08119M	24 pcs.
Cream	08303N	40 pcs.	08119N	24 pcs.
Eggshell	08303S	40 pcs.	08119S	24 pcs.
Wicker	08303W	40 pcs.	08119W	24 pcs.
Bronze	08303Z	40 pcs.	08119Z	24 pcs.



Aluminum Zig Zag Elbow
2"x3"



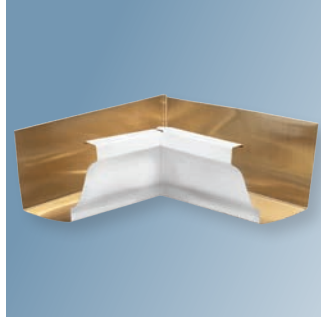
Aluminum Zig Zag Elbow
3"x4"



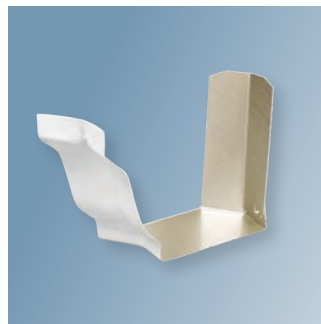
Aluminum 30° Elbow
2"x3" and 3"x4"



Specifications
 • Available 5" and 6" in all colors, Inside and Outside



Specifications
 • Available 5" and 6" in all colors, Inside and Outside



Specifications
 • Available 5" and 6" in all colors, Inside and Outside

Aluminum Mitres 5"- 6" Strip

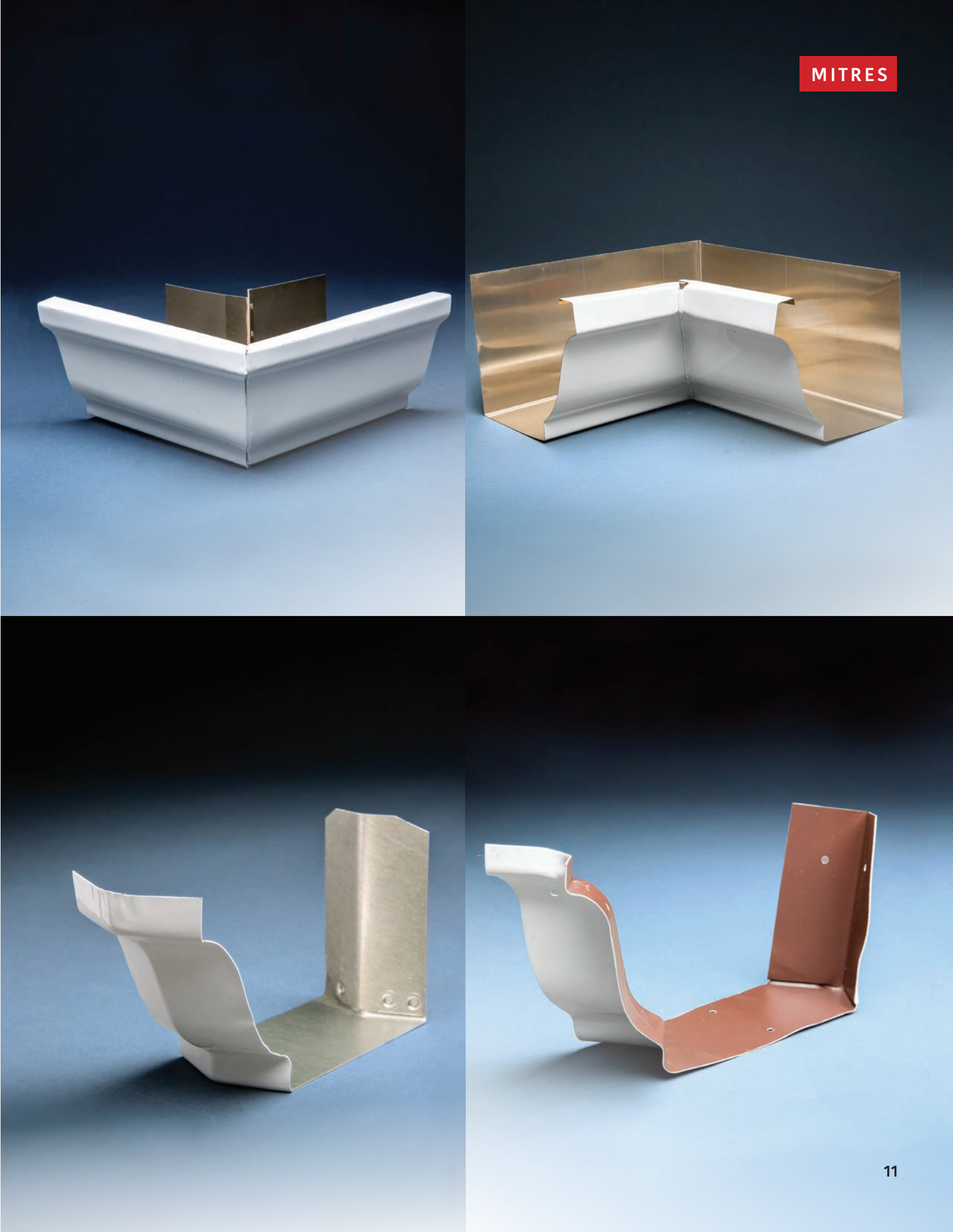
Color	5" Inside Part No.	5" Outside Part No.	6" Inside Part No.	6" Outside Part No.	Box Qty.
Hi Gloss	00140B	00141B	00146B	00147B	20 pcs.
Brown	00140C	00141C	00146C	00147C	20 pcs.
Clay	00140D	00141D	00146D	00147D	20 pcs.
Light Gray	00140H	00141H	00146H	00147H	20 pcs.
Ivory	00140I	00141I	00146I	00147I	20 pcs.
Dark Gray	00140K	00141K	00146K	00147K	20 pcs.
Lo Gloss	00140L	00141L	00146L	00147L	20 pcs.
Musket	00140M	00141M	00146M	00147M	20 pcs.
Cream	00140N	00141N	00146N	00147N	20 pcs.
Eggshell	00140S	00141S	00146S	00147S	20 pcs.
Wicker	00140W	00141W	00146W	00147W	20 pcs.
Bronze	00140Z	00141Z	00146Z	00147Z	20 pcs.
Black	00140E	00141A	00146E	00147E	20 pcs.

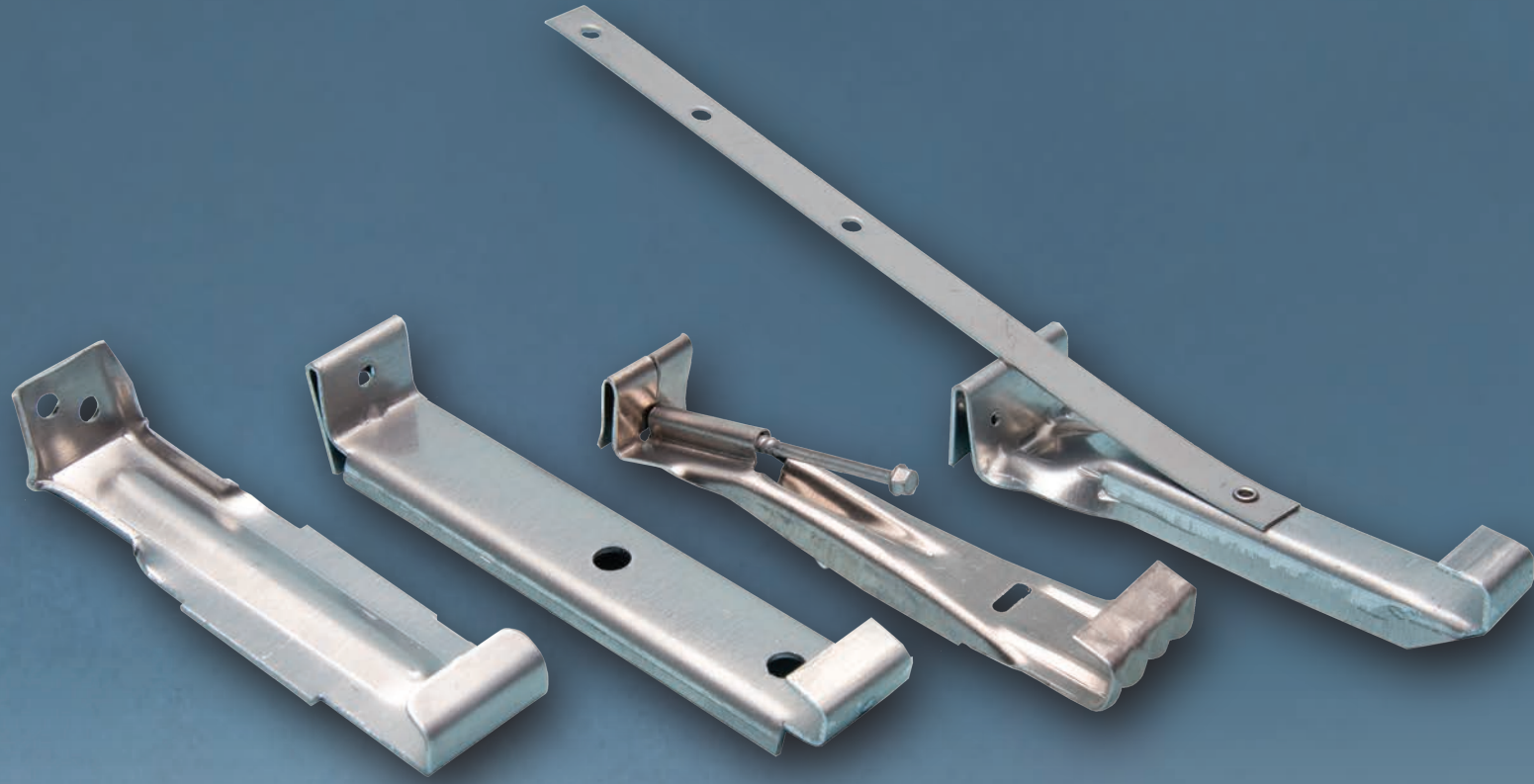
Aluminum Mitres 5"- 6" Box

Color	5" Inside Part No.	5" Outside Part No.	6" Inside Part No.	6" Outside Part No.	Box Qty.
Hi Gloss	00142B	00143B	00144B	00145B	20 pcs.
Brown	00142C	00143C	00144C	00145C	20 pcs.
Clay	00142D	00143D	00144D	00145D	20 pcs.
Light Gray	00142H	00143H	00144H	00145H	20 pcs.
Ivory	00142I	00143I	00144I	00145I	20 pcs.
Dark Gray	00142K	00143K	00144K	00145K	20 pcs.
Lo Gloss	00142L	00143L	00144L	00145L	20 pcs.
Musket	00142M	00143M	00144M	00145M	20 pcs.
Cream	00142N	00143N	00144N	00145N	20 pcs.
Eggshell	00142S	00143S	00144S	00145S	20 pcs.
Wicker	00142W	00143W	00144W	00145W	20 pcs.
Bronze	00142Z	00143Z	00144Z	00145Z	20 pcs.
Black	00142E	00143A	00144E	00145E	20 pcs.

Aluminum Mitres 5"- 6" Bay

Color	5" Inside Part No.	5" Outside Part No.	6" Inside Part No.	6" Outside Part No.	Box Qty.
Hi Gloss	00149B	00148B	00153B	00151B	20 pcs.
Brown	00149C	00148C	00153C	00151C	20 pcs.
Clay	00149D	00148D	00153D	00151D	20 pcs.
Light Gray	00149H	00148H	00153H	00151H	20 pcs.
Ivory	00149I	00148I	00153I	00151I	20 pcs.
Dark Gray	00149P	00148Y	00153K	00151K	20 pcs.
Lo Gloss	00149L	00148L	00153L	00151L	20 pcs.
Musket	00149T	00148T	00153M	00151M	20 pcs.
Cream	00149N	00148N	00153N	00151N	20 pcs.
Eggshell	00149S	00148S	00153S	00151S	20 pcs.
Wicker	00149W	00148W	00153W	00151W	20 pcs.
Bronze	00149Z	00148Z	00153Z	00151Z	20 pcs.
Black	00149E	00148E	00153E	00151E	20 pcs.





Aluminum Hangers No Screw

Part No.	Description	Box Qty.
00218C	5" Canadian Bar Hanger	200 pcs.
00218D	6" Canadian Bar Hanger	150 pcs.
00217F	7" Canadian Bar Hanger (Steel)	200 pcs.

Aluminum Hangers SS T Bar

Part No.	Description	Box Qty.
00210A	5" SS T Bar Hanger	200 pcs.
00224B	6" T Bar Hanger H-9	100 pcs.

Aluminum Hangers with Screw

Part No.	Description	Box Qty.
00215F	5" HD Hanger with Screw (Clip)	300 pcs.
00215IX	5" HD Hanger with Screw (No Clip)	100 pcs.
00215K	6" Hanger with Screw (No Clip)	300 pcs.
00215D	5" Hanger with Screw (BUC)	500 pcs.
00223D	6" Hanger with Screw (BUC)	300 pcs.
00218K	5" Hanger with Screw Hangfast	500 pcs.
00218M	6" Hanger with Screw Hangfast	500 pcs.



00218C
Aluminum Hanger No Screw

00218D
Aluminum Hanger No Screw

00217F
Aluminum Hanger No Screw

00210A
Aluminum Hanger SS T Bar

00224B
Aluminum Hanger SS T Bar

00215F
Aluminum Hanger with Screw

00215IX
Aluminum Hanger with Screw

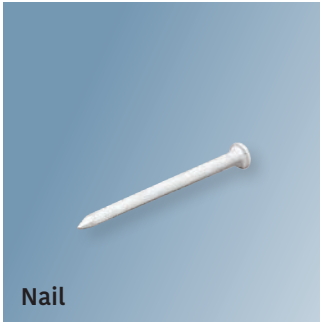
00223K
Aluminum Hanger with Screw

00215D
Aluminum Hanger with Screw

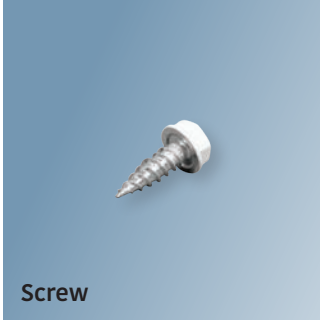
00223D
Aluminum Hanger with Screw

00218K
Aluminum Hanger with Screw

00218M
Aluminum Hanger with Screw



Nail



Screw



Pop Rivet

Gutter Attachment Fasteners: Nails

Part No.	Description	Box Qty.
00219A	1" Masonry	5 lbs.
00600S	1-1/4" Trim Nails – Stainless Steel White	1 lb.
00600C	1-1/4" Trim Nails – Stainless Steel Brown	1 lb.
00600U	1-1/4" Trim Nails – Stainless Steel Bronze	1 lb.
00600E	1-1/4" Trim Nails – Stainless Steel Black	1 lb.

Gutter Attachment Fasteners: Screws

Part No.	Description	Box Qty.	Box Qty.
00982B	#9 x 1-1/2" Screw	*2500/BOX	100 pk.
00982C	#9 x 2-1/2" Screw	*1500/BOX	100 pk.

Gutter Attachment Fasteners: Zip Screws

Box quantity only, 1000 pcs. per box

Color	1/2" Part No.	3/4" Part No.	3/8" Stainless Part No.
White	00980B	00983B	00981B
Brown	00980C	00984C	00981C
Clay	00980D	N/A	00981D
Light Gray	00980H	N/A	00981H
Cream	00980N	N/A	00981N
Wicker	00980W	N/A	00981W
Eggshell	00980Y	N/A	00981Y
Black	00980A	N/A	N/A
Ivory	00980I	N/A	N/A
Dark Gray	00980K	N/A	N/A
Musket	00980M	N/A	N/A
Bronze	N/A	N/A	N/A
Stainless Steel-Plain	N/A	N/A	00981Z

Gutter Attachment Fasteners - Pop Rivets

Part No.	Color	Bag Qty.	Box Qty.
00260C	Brown	100 pk.	1000 pcs.
00260D	Clay	100 pk.	1000 pcs.
00260E	Black	100 pk.	1000 pcs.
00260H	Light Gray	100 pk.	1000 pcs.
00260I	Ivory	100 pk.	1000 pcs.
00260K	Dark Gray	100 pk.	1000 pcs.
00260N	Cream	100 pk.	1000 pcs.
00260S	Eggshell	100 pk.	1000 pcs.
00260W	Wicker	100 pk.	1000 pcs.
00260Z	Bronze	100 pk.	1000 pcs.
00260B	White	100 pk.	1000 pcs.





U Clips



Pipebands



Cleats



Leader Heads



Gutter Wedge: 5" and 6"

Aluminum Downspout: U Clips

Color	2"x3" Part No.	Box Qty.	3"x4" Part No.	Box Qty.
Hi Gloss White	00199B	125 pcs.	00198B	65 pcs.
Brown	00197C	125 pcs.	00198C	65 pcs.
Clay	00197D	125 pcs.	00198D	65 pcs.
Black	00197A	125 pcs.	00198E	65 pcs.
Light Gray	00197H	125 pcs.	00198H	65 pcs.
Ivory	00197I	125 pcs.	00198I	65 pcs.
Dark Gray	00197K	125 pcs.	00198X	65 pcs.
Lo Gloss White	00197L	125 pcs.	00198L	65 pcs.
Musket	00197M	125 pcs.	00198M	65 pcs.
Cream	00197N	125 pcs.	00198N	65 pcs.
Eggshell	00197S	125 pcs.	00198S	65 pcs.
Wicker	00197W	125 pcs.	00198W	65 pcs.
Bronze	00197Z	125 pcs.	00198Z	65 pcs.

Aluminum Downspout: Pipebands

Color	2"x3" Part No.	3"x4" Part No.	Box Qty.
Hi Gloss	00200B	00201B	125 pcs.
Brown	00200C	00201C	125 pcs.
Clay	00200D	00201D	125 pcs.
Black	00200F	00201O	125 pcs.
Light Gray	00200H	00201H	125 pcs.
Ivory	00200I	00201I	125 pcs.
Dark Gray	00200K	00201K	125 pcs.
Lo Gloss	00200L	00201L	125 pcs.
Musket	00200M	00201M	125 pcs.
Cream	00200N	00201N	125 pcs.
Eggshell	00200S	00201S	125 pcs.
Wicker	00200W	00201W	125 pcs.
Bronze	00200Z	00201Z	125 pcs.

Aluminum Downspout: Cleats

Color	Part No.	Box Qty.
Hi Gloss	00202A	200 pcs.
Brown	00202C	200 pcs.

Aluminum Funnel: Leader Heads

Part No.	Description	Box Qty.
00183B	3" Hi Gloss Funnel	12 pcs.
00170B	3" Leader Head Hi Gloss	12 pcs.
00171A	4" Leader Head Hi Gloss	12 pcs.

Aluminum Gutter Wedge 5"

Part No.	Box Color	Box Qty.
00217B	White	150 pcs.
00217C	Brown	150 pcs.

Aluminum Gutter Wedge 6"

Part No.	Box Color	Box Qty.
00217D	White	100 pcs.
00217Z	Brown	100 pcs.

PVC Drain Adapter 2"x3"x4"

Part No.	Description	Box Qty.
01098C	Downspout Adapter 2"x3"x4"	30 pcs.
01098D	Downspout Adapter 3"x4"x4"	30 pcs.
01098H	Downspout Adapter 3"x4"x4" White	24 pcs.
01098G	Downspout Adapter 3"x4"x4" Black	24 pcs.
SP6018W	Downspout Adapter 3"x4"x3" White	24 pcs.
SP6018	Downspout Adapter 3"x4"x3" Black	24 pcs.

Aluminum Outlets: Rectangular and Round

Part No.	Description	Box Qty.
00181W	Rectangular Outlet 2"x3"	100 pcs.
00176B	Rectangular Outlet 3"x4"	125 pcs.
00179B	Round White Outlet 2-3/8"	250 pcs.
00179D	Round M/F Outlet 2-3/4"	250 pcs.
00177A	Round M/F Outlet 3-3/8"	100 pcs.

Gutter Caulking and Sealants

Part No.	Description	Box Qty.
00290A	Silicone GE Clear 1001	24 tubes
00290B	Silicone GE White 1002	24 tubes
00313A	OSI Sealant Silver 5 oz.	24 tubes
00313B	OSI Sealant White 5 oz.	24 tubes
00319A	Geocel 2300 Clear	24 tubes
00319C	Geocel 2320 White 10.32 oz.	24 tubes
00319Z	Geocel 2320 Clear 10.32 oz.	24 tubes
00319I	Geocel 2320 Gray 10.32 oz.	24 tubes
00310B	OSI Caulk White Sealant	12 tubes

Gutter Touch Up Paint

Part No.	Description	Box Qty.
00292A	Lo Gloss	12 cans
00292B	Hi Gloss	12 cans
00292C	Brown	12 cans
00292D	Clay	12 cans
00293E	Black	12 cans
00292H	Light Gray	12 cans
00292I	Ivory	12 cans
00292K	Dark Gray	12 cans
00292M	Musket	12 cans
00292N	Cream	12 cans
00292W	Wicker	12 cans
00292Y	Eggshell	12 cans
00292Z	Bronze	12 cans



Drain Adapter



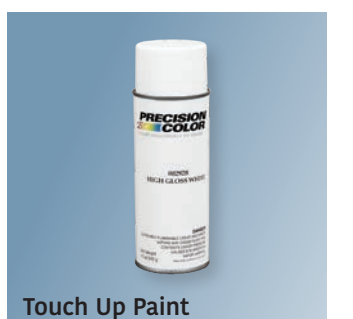
Aluminum Outlets



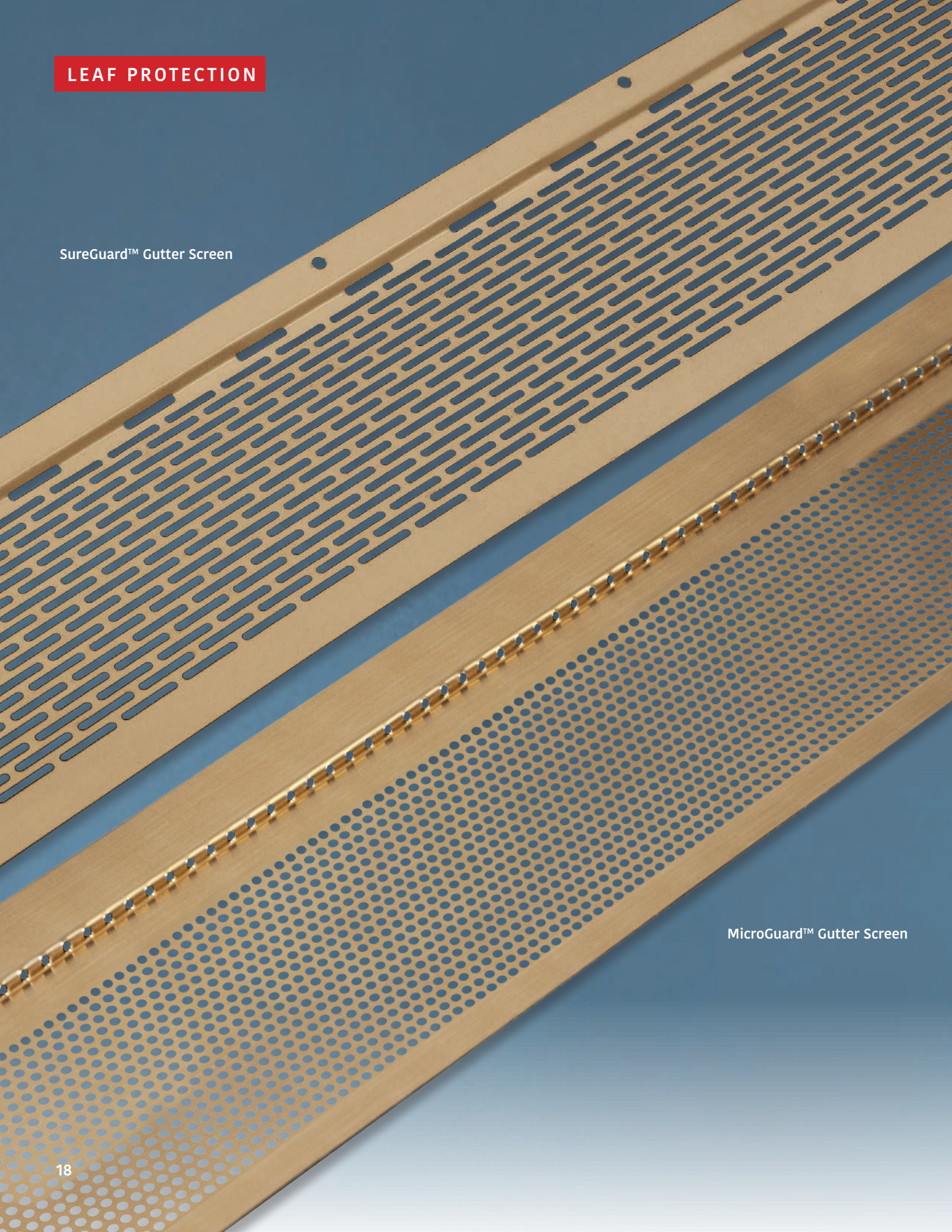
Caulking and Sealants



Geocel



Touch Up Paint



SureGuard™ Gutter Screen

MicroGuard™ Gutter Screen

Aluminum Drop-In Gutter Guards

Part No.	Color	5"x3'	6"x3'	Box Qty.
00270B	Mesh	•		50 pcs.
00270C	Mesh		•	50 pcs.

**Englert SureGuard™ Gutter Screen
Made with .027" Aluminum**

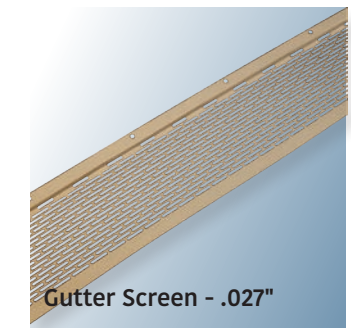
Part No.	Color	3'	Box Qty.
00267C	Gold SureGuard Screen	Covers 5" & 6"	50 pcs.
00267D	White SureGuard Screen	Covers 5" & 6"	50 pcs.

**Englert MicroGuard™ Gutter Screen
Made with .032" Aluminum**

Part No.	Description	Size	Box Qty.
00267T	MicroGuard Flat	5"x4'	38 pcs.
00267R	MicroGuard Standard	5"x4'	38 pcs.
00267X	MicroGuard Reverse Bend	5"x4'	38 pcs.
00267U	MicroGuard Flat	6"x4'	38 pcs.
00267S	MicroGuard Standard	6"x4'	38 pcs.
00267Z	MicroGuard Reverse Bend	6"x4'	38 pcs.



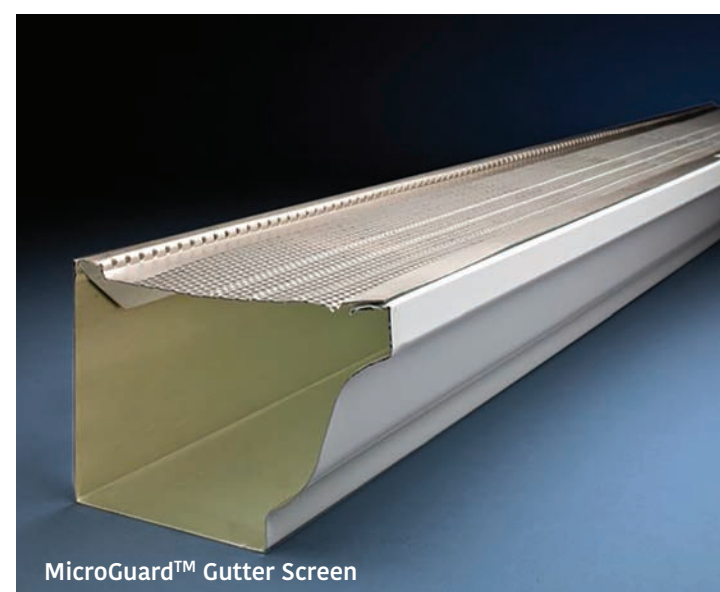
Gutter Guard



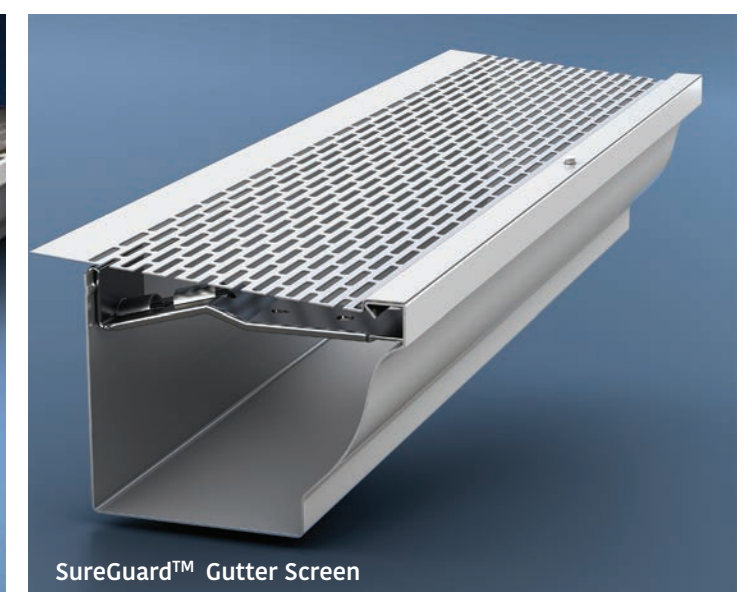
Gutter Screen - .027"



Gutter Screen - .032"



MicroGuard™ Gutter Screen



SureGuard™ Gutter Screen

FORMING TOOLS



2-in-1 Rivet Gun



Crimper SL-1

2-In-1 Rivet Gun

Part No.	Description
00908A	2-in-1 Rivet Gun

Crimper SL-1

Part No.	Description
00902A	Crimper SL-1 For End Caps

Crimper C-4

Part No.	Description
00901A	Crimper C-4 For Leader



Crimper C-4



HEX Driver

HEX Driver

Part No.	Description
00910K	6" HEX Driver
00910J	2 9/16" HEX Driver

Snips M12

Part No.	Description
00903A	Snips - M12N



Snips M12



Hole-In-1 Saw

Hole-In-1 Saw

Part No.	Description
00921A	2 3/8" Hole Saw
00921E	3 3/8" Hole Saw
SP6089	2 3/4" Hole Saw

Englert Gutter Stand

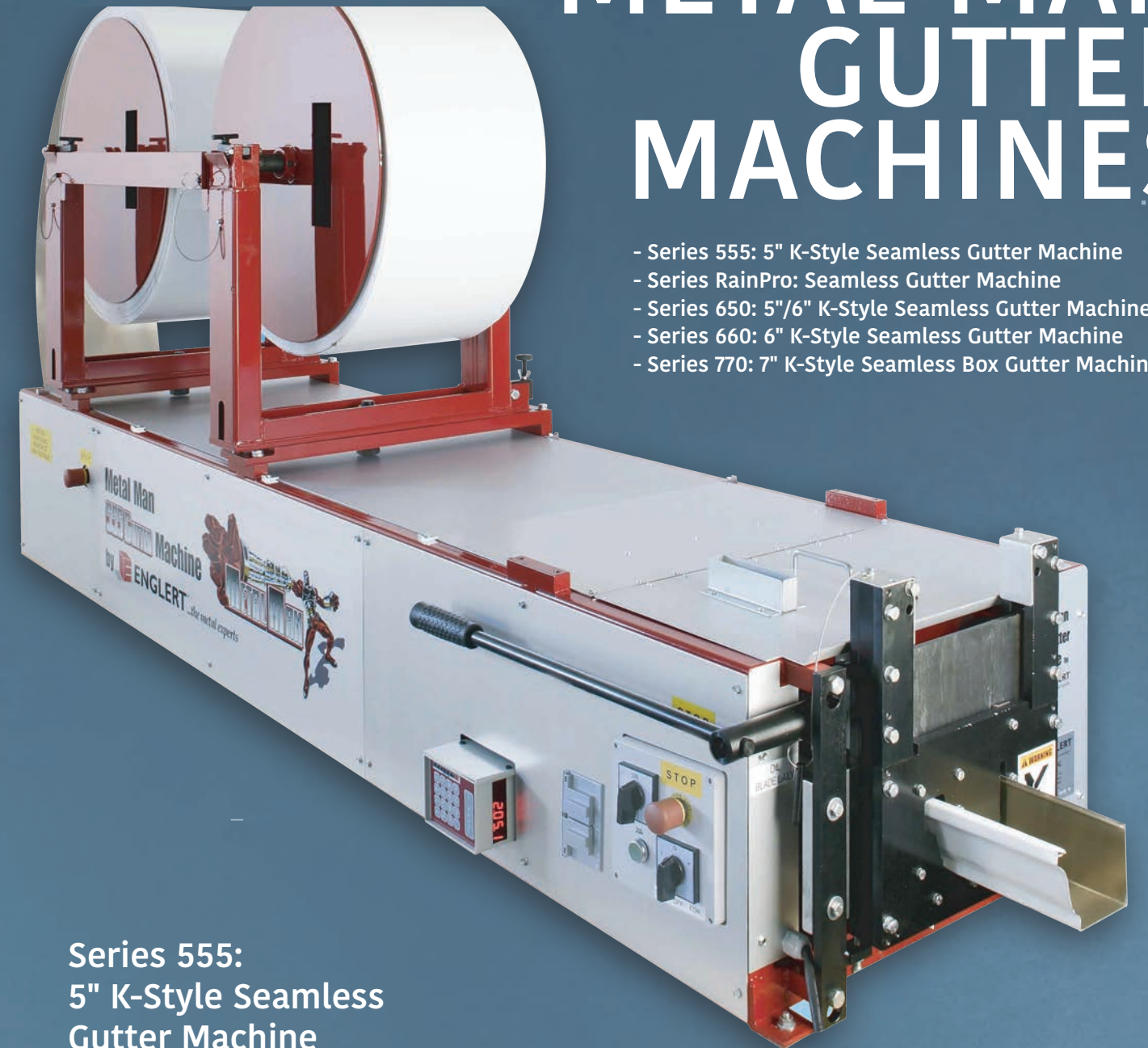
Part No.	Description
01341D	5"/6" Englert Gutter Stand
01341E	7" Englert Gutter Stand



Englert Gutter Stand

METAL MAN GUTTER MACHINES

- Series 555: 5" K-Style Seamless Gutter Machine
- Series RainPro: Seamless Gutter Machine
- Series 650: 5"/6" K-Style Seamless Gutter Machine
- Series 660: 6" K-Style Seamless Gutter Machine
- Series 770: 7" K-Style Seamless Box Gutter Machine



Series 555: 5" K-Style Seamless Gutter Machine

Features

- Free floating chromed forming rollers
- Mechanical guillotine utilizing double rack and pinion shear
- Exit end and reversing drum switch with exit end 15 amp., 120V., weatherproofed double outlet auxiliary power source and with entry end and exit emergency stop switch
- Two independently mounted easily reversible reel stands, with two adjustable width reels
- Limited 5 year parts warranty
- Fits into the back of an 8 foot (2.44 m) pick up truck
- Runs aluminum, copper, painted or galvanized steel and standard terne-coated steel
- Operation and adjustment manual

Available Options

- Gutter stands
- Extra reels
- Cradles
- 3rd reel support stand
- 50 hz.
- 220V
- Convenience outlet
- Free float unit
- Mini 150 foot gutter spool
- Footage counter/electronic tape measure
- CE compliant

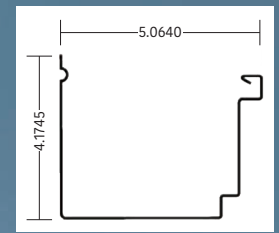
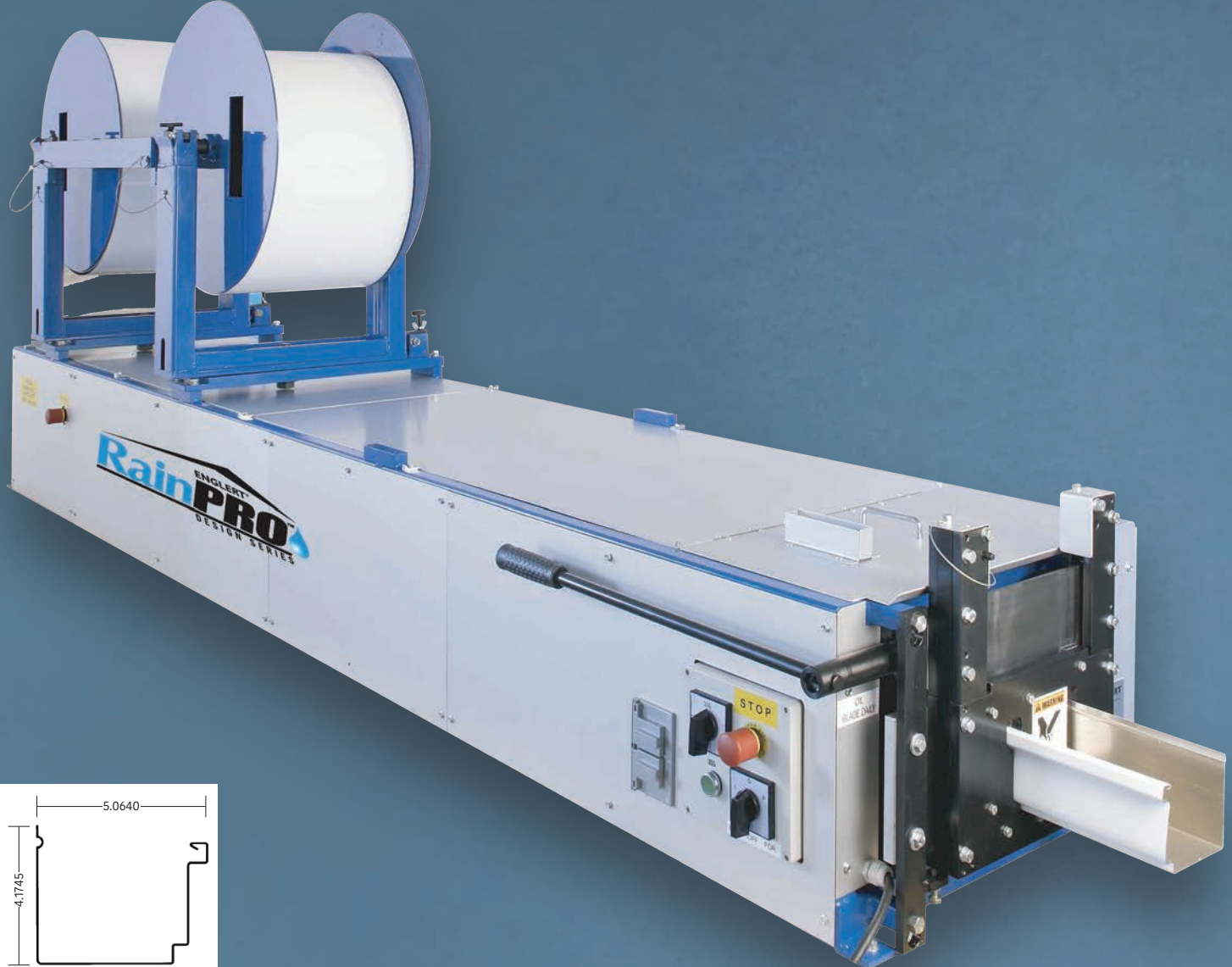
Series RainPro: Seamless Gutter Machine

Features

- Free floating chrome plated forming rollers
- Mechanical guillotine utilizing double rack and pinion shear
- Two independently mounted, easily reversible reel stands, with two adjustable width reels
- Limited 5 year parts warranty
- Runs aluminum, copper, painted or galvanized steel and standard terne-coated steel

Available Options

- Gutter stands
- Extra reels
- Cradles
- 3rd reel support stand
- 50 hz.
- 220V
- Convenience outlet
- Free float unit
- Mini 150 foot gutter spool
- Footage counter/electronic tape measure
- CE compliant



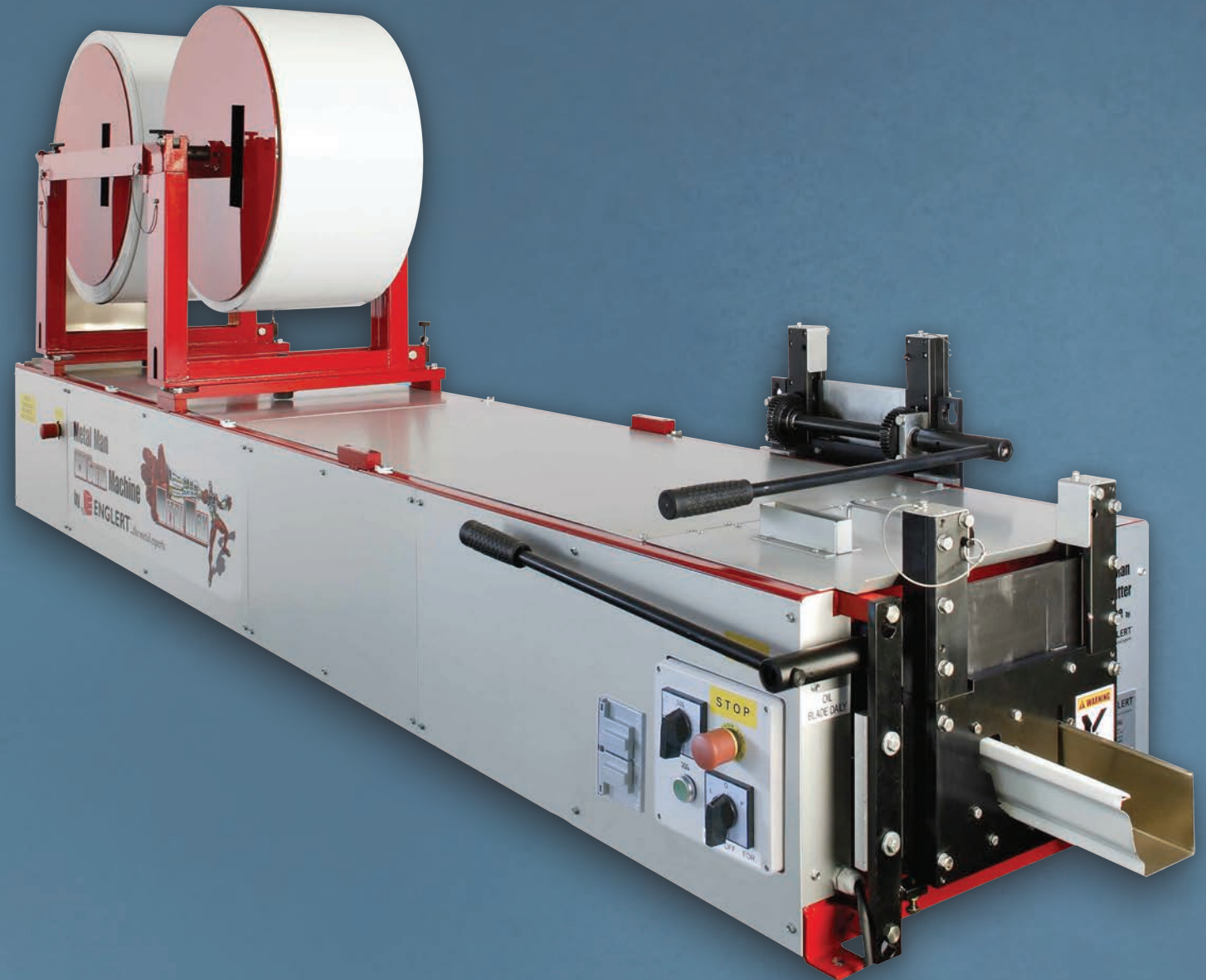
Series 650: 5"/6" K-Style Seamless Gutter Machine

Features

- Free floating chrome plated forming rollers
- Mechanical guillotine utilizing double rack and pinion shear
- Two independently mounted, easily reversible reel stands, with two adjustable width reels
- Limited 5 year parts warranty
- Runs aluminum, copper, painted or galvanized steel and standard terne-coated steel

Available Options

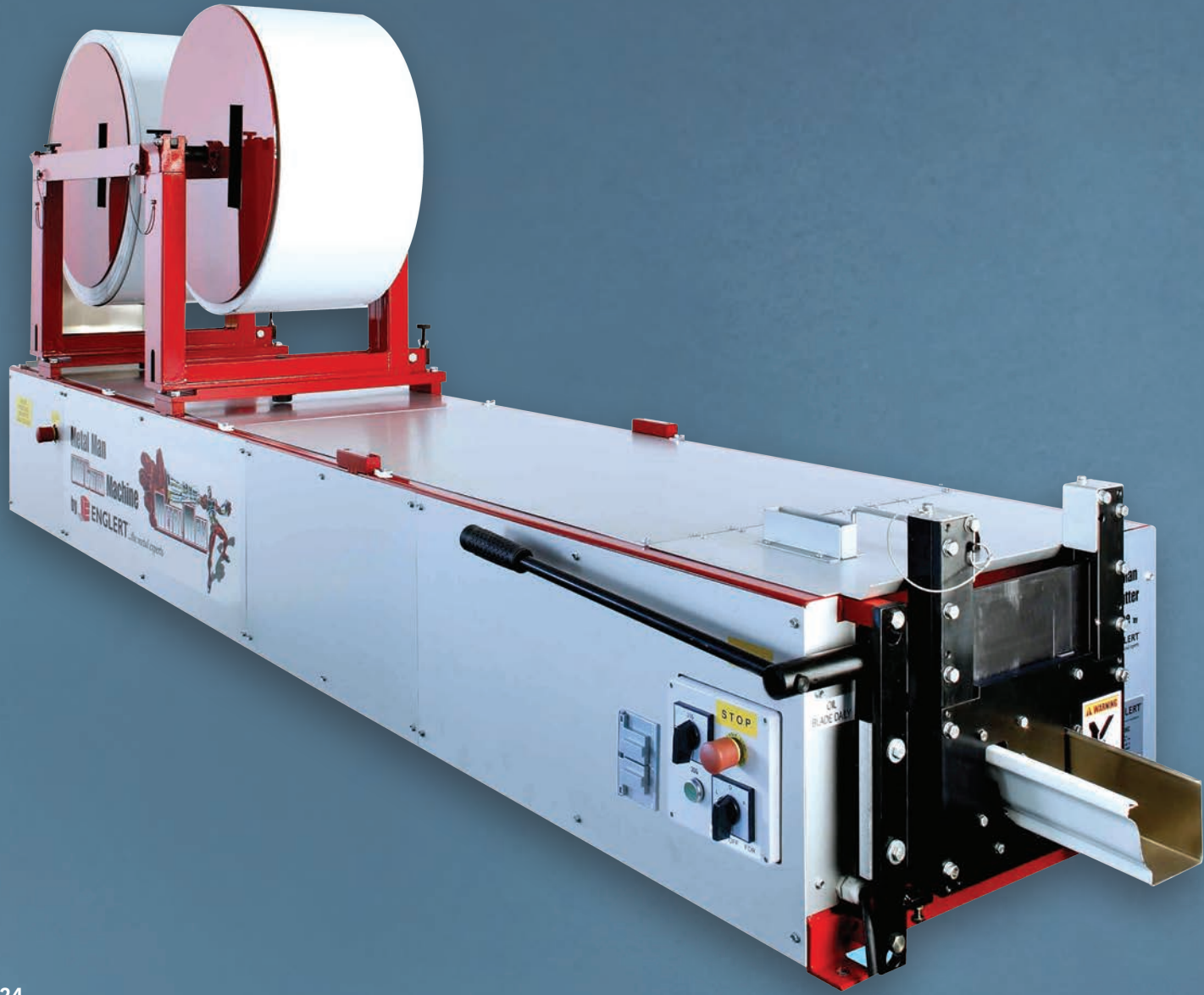
- Gutter stands
- Extra reels
- 3rd reel support stand
- 50 hz.
- 220V
- Convenience outlet
- Coil cradles
- Free float unit
- Mini 150 foot gutter spool
- Footage counter/electronic tape measure
- CE compliant



Series 660: 6" K-Style Seamless Gutter Machine

- Features**
- Free floating chromed forming rollers
 - Mechanical guillotine utilizing double rack and pinion shear
 - Exit end reversing drum switch with exit end 15 amp., 120V., weather proofed double outlet auxiliary power source and with entry end and exit emergency stop switch
 - Two independently mounted easily reversible reel stands, with two adjustable width reels
 - Limited 5 year warranty
 - Runs aluminum, copper, painted or galvanized steel and standard terne-coated steel

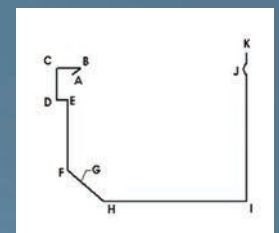
- Available Options**
- Gutter stands
 - Extra reels
 - 3rd reel support stand
 - 50 hz.
 - 220V
 - Coil cradles
 - Free float unit
 - Convenience outlet
 - Mini 150 foot gutter spool
 - Footage counter/electronic tape measure
 - CE compliant



Series 770: 7" K-Style Seamless Box Gutter Machine

- Features**
- Free floating chromed forming rollers
 - Mechanical guillotine utilizing double rack and pinion shear
 - Exit end reversing drum switch with exit end 15 amp., 120V., weatherproofed double outlet
 - Footage counter / electronic tape measure
 - Limited 5 year parts warranty

- Available Options**
- Adjustable 4" flange kit (from -5° to 15°) (Part Number 01320P)
 - Gutter stands
 - Extra reels
 - Convenience outlet
 - Specially designed trailer (Part Number 01451A)



Best in Industry Five Year Limited Machine Warranty

Englert offers its machine customers a limited five-year parts and labor warranty from the date of sale on all new Englert gutter roll-forming machines purchased from Englert, only and when operated under normal operating conditions and in strict accordance with any operating manuals or instructions provided at the time of sale. During this

period, Englert will repair or replace any part or assembly of the machine manufactured by Englert that it deems defective.

Englert will also repair or replace defective parts and assemblies at the job site or purchaser's shop at an additional charge, including current hourly repair

rate plus expenses, and a minimum of 10 business days' notice.

For more information about Englert's limited five-year parts and labor warranty contact your local Englert representative or visit our website <https://www.englertinc.com/warranty/roll-forming-machine-warranty>

The Industry's Only Mobile Technical Service

Englert offers its contractors the industry's only mobile technical service fleet for gutter rollforming machinery service and repairs. Unlike competitors who require that machines be shipped to their headquarters for repairs, Englert's fleet of fully equipped mobile service vehicles ser-

vice our gutter rollforming equipment at your location. Our factory trained machine technicians repair and refurbish machines in hours - not days. And while competitors must load their repaired machines on a common carrier's truck and ship it back to the contractor, an Englert gutter machine

serviced onsite is already back in business, servicing your customers.

For more information about Englert's mobile technical service program and service agreements, contact your local Englert sales representative.

ARCHITECTURAL GUIDE SPECIFICATIONS

Scope of Work

Furnish all labor, materials, and equipment required to complete installation of raincarrying system and related work as indicated on drawings or specified herein.

Materials

- A. Gutters shall be made of 3105-H24 aluminum and shall be continuous and seamless [Minimum tensile strength 26,000 psi, minimum yield strength 25,000 psi] or equivalent.
- B. Gutter gauges shall be .032" or .027" (select one as needed) gauge nominal, with 3" x 4" or 2" x 3" (select one) downspouts, [leaders] in .019" gauge.
- C. End caps to be .027" gauge.
- D. Inside and outside mitres to be .027" gauge.
- E. Sealant/Caulking - (select as appropriate): Parabond Sealer (silver) G.E. Silicone - (white, clear and bronze). Butyl Sealer - (white)
- F. Downspout anchors to be aluminum.
- G. Gutter hangers to be .063" gauge.
- H. Prior to painting, the metal shall receive a pre-treatment to assure for maximum paint adhesion. The exterior finish shall be a two-coat system applied in a continuous baked-on process in a single operation, comprising of an acid-based primer and baked-on high performance linear polyester topcoat. The inside of the gutter shall be finished with a polyester gold backer or wash coat.
- I. All accessories used with the raincarrying system shall have the same finish as the gutters.

- B. The raincarrying system shall be installed in accordance with Manufacturer's recommended procedures. Gutters shall be installed by using appropriate hangers to allow flexibility of movement.
- C. All gutter hangers shall be installed by using two 1-1/4" screw shank nails and fastened into solid lumber.
- D. All gutters shall be in continuous length for each elevation (run). No end laps are allowed.
- E. Upon completion, the contractor shall clean the debris.
- F. Dissimilar materials.
 - 1. Exercise care in placing aluminum in contact with other dissimilar metals or materials that are not compatible with aluminum.
 - 2. Providing adequate insulation/separation wherever necessary, such as by painting or otherwise protecting when they are in contact with aluminum or when drainage from them passes over aluminum.

Certification of Compliance

The raincarrying systems shall meet the following specifications and/or code approvals:

- A. American Architectural Manufacturers Association (AAMA) Specification 1405.1 "Specification for Aluminum Raincarrying Systems."
- B. FHA Minimum Property Standard 4900.1 for One- and Two-Family Dwellings.
- C. FHA Minimum Property Standard 4910.1 for Multi-Family Dwellings.

Warranty

The seamless aluminum gutter raincarrying system shall be covered by a limited 20-year, pro-rated and non-transferable Paint Finish Warranty covering labor and materials by the Manufacturer.

Purchasing a Seamless Gutter Machine

Why should I purchase a seamless gutter machine? CONTROL.

How many times are you left waiting to get paid after the siding or roofing has been installed? Too many times?

You can run your business with the most experienced applicators, the newest and best trucks, and all the great new tools that are available to the trade.

If you can't get the final payment on the job because your gutter installer can't get the job completed, then now is the time to look into having your own seamless 5", 6" or 5"-6" combination machine.



Gutter Coil Purchasing Tips

When you buy by the pound and sell by the foot, remember the old saying: "Let The Buyer Beware."

Many gutter machine repair problems are caused by running coil that is too hard, coil that is slit to the wrong width, coil that has too much wax in the wash coat which causes the coil to slip in the machine.

To know what gauge you are receiving is very important. When buying gutter coil by the pound, being overgauged by one thousandth can cost you additional money per foot.

To find the cost per ft. take the cost per lb. and divide by the yield factor listed to the right.

- Example**
- \$2.00 per lb. cost 11 3/4" x .027" divide by 2.238=.89 ft.
 - \$2.00 per lb. cost 15" x .027" divide by 2.078=.96 ft.
 - \$2.00 per lb. cost 11 3/4" x .032" divide by 2.653=.75 ft.
 - \$2.00 per lb. cost 15" x .032" divide by 1.754=1.14 ft.

Cost Per Lb. (Yield Factors = Ft. Per Lb.)		
Width	Gauge	Ft. Per Lb.
11-3/4"	.027"	2.653
11-3/4"	.032"	2.238
15"	.027"	2.078
15"	.032"	1.754



Gutter Hanging Systems - 101

There are various types of hanging systems that are available. What would be the best type to use for different applications?

1. SST Bar Hanger
To be used when there is no fascia board. This hanger has a stainless steel strap that would be nailed to the roof. The rivet holding the strap to the hang-

er has been designed to hold the full weight of a typical gutter, when spaced at 24" on center.

2. Hidden Hanger
This is an internal hanger and can be attached from the gutter to the fascia board with either a nail or screw. If using a nail the use of a slant fin tool will help with the installation.

3. Hidden Hanger with Screw
This is an internal hanger and has the screw attached to the hanger. It is usually installed with the use of a cordless drill.

4. Canadian Bar Hanger
This is an internal hanger and can be attached from the gutter to the fascia board with either a nail or screw.

Ratios

Did you know you could plan your inventories by using ratios?

What is a ratio?

A ratio is something that is compared to something else.

Example:

For every 2 hands there are 10 fingers. The ratio would be 10 to 2. Englert has kept track of ratios since 1966. We use them in sales projection and you can use them in planning your usage of materials and inventory.

Example:

H&H Gutter Company will use 180 ft. of gutter for their next job application. Therefore, they need approximately 90 ft. of leader, 20 elbows, 13 endcaps, 90 gutter hangers, etc. By dividing the number in the right-hand column (see chart above) into the gutter footage used for the entire job application, you can determine how much to order on your accessory items. Therefore if you are keeping an inventory, Englert can help you manage it by the use of numbers and ratios.

Example:

If you purchase 1 roll of gutter coil at 400 lbs. .027 gauge you will have approximately 1061 ft. of gutter. 2.653 x 400 = 1061 ft.

MAINTENANCE OF SEAMLESS GUTTER & RAINWEAR PRODUCTS

Normal Conditions

The finish on your seamless gutter and rainware products is one like any other colored or painted surface, subject to chalking and some degree of color change, due to normal atmospheric weather conditions and dirt accumulation, depending on the atmosphere to which your subdivisions are exposed. Under normal conditions, objectionable superficial surface dirt can be removed by washing down the gutters with a garden hose and a soft bristle brush. While weathering occurs through exposure to sunlight or extreme weather conditions, the finish resists the associated problems of peeling, chipping, and blistering. It resists dirt and stands up to the environment better. The resistance to dirt adhesion provides a selfcleaning feature, which helps to greatly minimize loose surface dirt, caused by normal rainfall.

Unusual Conditions

In industrial areas, where a more thorough cleaning is necessary for stains resulting from tree sap, insecticides, chimney fumes, etc., the finish should be washed with a sponge or soft bristle brush and a solution of detergent and water (1/3 cup of detergent such as Tide, per gallon of water, for example). Immediately rinse surfaces thoroughly with a garden hose. Avoid vigorous rubbing as this can cause the coating to lose its luster and finish. To minimize streaking, wash from bottom to top.

In some geographic locations, mildew may appear as black spots. Mildew can be removed by treating the gutters with

Gutter Ratio Chart

Material (Every piece/foot) = Amount of Gutter Needed

Leader	2 ft.
Elbows	9 ft.
End Caps	14 ft.
Gutter Hangers	2 ft.
Leader Hanger	10 ft.
Screws	4 ft.
Mitres	88 ft.
Outlet Tubes	20 ft.
Sealant	240 ft.

Therefore you should have the following back up for accessories.

Leader	500 ft.
Elbows	120 pcs.
End Caps	60 pcs. 60 pcs. (Right & Left)
Gutter Hangers	500 pcs.
Mitres	20 pcs.
Leader Hangers	100 pcs.
Screws	1 box
Sealant	1 box
Outlet Tubes	1 box

(NOTE: Full box quantities shown.)

the following solution:

Solution:

- 1/2 cup detergent (such as Tide)
- 2/3 cup Soilax
- 1 quart liquid bleach (such as Clorox)
- 3 quarts water

Caution:

Greater concentrations may cause damage to the finish. Do not use abrasive or solvent type cleaners or paint removers.

The solution can either be sprayed or sponge applied with a soft bristle brush. Allow it to remain for 15 to 20 minutes, and then rinse clean with a hose. Adequate rinsing is recommended to assure cleansing of the finish and further dilute the solution so as not to harm shrubbery under gutter and fascia areas. Test the solution or clean a small area before application to large areas. Avoid skin contact or getting the solution into your eyes.

Caulking Compounds and Tar

Mineral spirits may be used in reasonable quantities to remove caulking compounds or tar from the finish. Rinse with clear water.



**APPLICATION AND TERMS FOR EXTENSION OF CREDIT
FOR THE PURPOSE OF OBTAINING MERCHANDISE FROM YOU ON CREDIT, THE FOLLOWING
STATEMENT IN WRITING IS MADE, INTENDING THAT IT WILL BE RELIED UPON AS CORRECT.
FAX COMPLETED FORM TO : 732-324-39558 OR EMAIL: credit@englertinc.com**

Firm or Trade Name _____	Date _____
Street _____	City/State/Zip _____
Kind of Business _____	How Long in Business _____
Business Telephone _____	Email Address _____
<input type="checkbox"/> Individual <input type="checkbox"/> Partnership <input type="checkbox"/> Corporation	

Officers or Partners	Name and Title _____	Name and Title _____
Name and Title _____	Social Security No. _____	Social Security No. _____
Social Security No. _____	Address _____	Address _____
Address _____	Home Telephone _____	Home Telephone _____
Home Telephone _____	<input type="checkbox"/> Own <input type="checkbox"/> Rent	<input type="checkbox"/> Own <input type="checkbox"/> Rent
<input type="checkbox"/> Own <input type="checkbox"/> Rent		

CURRENT BUSINESS REFERENCES: SUPPLIERS

Name _____	Name _____
Address _____	Address _____
Telephone _____	Telephone _____
Fax _____	Fax _____
Name _____	Name _____
Address _____	Address _____
Telephone _____	Telephone _____
Fax _____	Fax _____

CREDIT LIMIT REQUESTED _____ **TERMS** Net 30 Days from Invoice Date - 1 1/2% service charge per month on all past due accounts. In the event of collection, customer will be responsible for all collection fees and expenses.

DELIVERY OF MATERIALS: We accept all responsibility for shipments of goods and materials by Englert to job sales, my/our place of business, or any other location designated by me/us; whether or not someone is present to receive and sign for such goods and materials.

BANKING REFERENCES

Company Checking Account (Name of Bank) _____ Account No. _____
Loans (Name of Bank) _____ Account No. _____

Have you signed any personal guarantees, financing statements or any other security for the purpose of credit? Yes___ No___

Is there any previous guarantees, financing statements or any other security for the purpose of securing credit? Yes___ No___

Is there any previous bankruptcy, insolvency or suits involving the principals personally or any company in which principals have been connected? Yes___ No___ If yes, give details.

PERSONAL GUARANTY: In order to induce you to extend credit to the above named corporation and in consideration of your extending to said corporation, at any time or from time to time, at my/our request. I/We jointly and severally guarantee prompt, primary and immediate payment of any sums or credit advanced. This is a continuing guarantee; notice of its acceptance is hereby waived. It is hereby understood that Englert Inc. will use the information provided to obtain personal, as well as, commercial credit reports in order to process this application.

Personal Guaranty Signed By: _____
Signature _____

Application Signed By: _____
Signature _____
Signature _____
Signature _____

ADDENDUM A
THE FAIR CREDIT REPORTING ACT
SIGNATURE REQUIRED
APPLICANT:

By: _____
 Signature

Print Name

Social Security Number

Personal Address

By: _____
 Witness Signature Date

Print Name

SIGNATURE REQUIRED
APPLICANT:

By: _____
 Signature

Print Name

Social Security Number

Personal Address

By: _____
 Witness Signature Date

Print Name

1200 AMBOY AVE., PERTH AMBOY, NJ 08861

Gutter Coil Thickness Chart

Thickness	.027" x 11 ³ / ₄ " Lb./Ft.	.032" x 11 ³ / ₄ " Lb./Ft.	.027" x 15" Lb./Ft.	.032" x 15" Lb./Ft.
1/2"	30/80	30/68	38/80	38/68
3/4"	46/122	46/103	59/122	59/103
1"	62/165	62/139	79/165	79/139
1-1/4"	79/209	79/176	100/209	100/176
1-1/2"	96/255	96/215	122/255	122/215
1-3/4"	114/301	114/254	145/301	145/254
2"	132/349	132/295	168/349	168/295
2-1/4"	150/398	150/336	191/398	191/336
2-1/2"	169/449	169/379	215/449	215/379
2-3/4"	189/500	189/422	240/500	240/422
3"	208/553	208/467	266/553	266/467
3-1/4"	229/607	229/512	292/607	292/512
3-1/2"	249/661	249/559	318/661	318/559
3-3/4"	271/718	271/606	345/718	345/606
4"	292/775	292/655	373/775	373/655
4-1/4"	314/834	314/704	401/834	401/704
4-1/2"	337/894	337/755	430/894	430/755
4-3/4"	360/955	360/807	459/955	459/807
5"	384/1018	384/860	489/1018	489/860
5-1/4"	408/1082	408/913	520/1082	520/913