

# UC Santa Barbara

## UC Santa Barbara Previously Published Works

### Title

Female Health Across the Tree of Life: Insights at the Intersection of Women's Health, One Health and Planetary Health

### Permalink

<https://escholarship.org/uc/item/1902f6tr>

### Journal

PNAS Nexus, 1(2)

### ISSN

2752-6542

### Authors

Natterson-Horowitz, B  
Boddy, Amy M  
Zimmerman, Dawn

### Publication Date




2022-05-27

### DOI

10.1093/pnasnexus/pgac044

Peer reviewed

# Female Health Across the Tree of Life: Insights at the Intersection of Women’s Health, One Health and Planetary Health

B. Natterson-Horowitz <sup>a,b,\*</sup>, Amy M. Boddy <sup>c,d</sup> and Dawn Zimmerman <sup>e,f,g</sup>

<sup>a</sup>Department of Human Evolutionary Biology, Harvard University, Cambridge, MA 02138, USA

<sup>b</sup>Division of Cardiology, David Geffen School of Medicine at UCLA, Los Angeles, CA 90095, USA

<sup>c</sup>Arizona Cancer Evolution Center, Arizona State University, Tempe, AZ 85281, USA

<sup>d</sup>Department of Anthropology, University of California, Santa Barbara, CA 93106, USA

<sup>e</sup>Director of Wildlife Health, Veterinary Medical Officer, Global Health Program, Smithsonian Conservation Biology Institute, Smithsonian Institution, Washington, DC 20008, USA

<sup>f</sup>Department of Epidemiology of Microbial Disease, Yale School of Public Health, New Haven, CT 06520, USA

<sup>g</sup>Veterinary Initiative for Endangered Wildlife, Bozeman, MT 59715, USA

\*To whom correspondence should be addressed: Email: [natterson-horowitz@fas.harvard.edu](mailto:natterson-horowitz@fas.harvard.edu)

Edited By: Karen E. Nelson.

## Abstract

Across the tree of life, female animals share biological characteristics that place them at risk for similar diseases and disorders. Greater awareness of these shared vulnerabilities can accelerate insight and innovation in women’s health. We present a broadly comparative approach to female health that can inform issues ranging from mammary, ovarian, and endometrial cancer to preeclampsia, osteoporosis, and infertility. Our focus on female health highlights the interdependence of human, animal, and environmental health. As the boundaries between human and animal environments become blurred, female animals across species are exposed to increasingly similar environmental hazards. As such, the health of female animals has unprecedented relevance to the field of woman’s health. Expanding surveillance of animal populations beyond zoonoses to include noncommunicable diseases can strengthen women’s health prevention efforts as environmental factors are increasingly implicated in human mortality. The physiology of nonhuman females can also spark innovation in women’s health. There is growing interest in those species of which the females appear to have a level of resistance to pathologies that claim millions of human lives every year. These physiologic adaptations highlight the importance of biodiversity to human health. Insights at the intersection of women’s health and planetary health can be a rich source of innovations benefitting the health of all animals across the tree of life.

**Keywords:** Women’s Health, One Health, Planetary Health, Evolutionary Medicine, Biomimicry

“In nature nothing exists alone.”  
Rachel Carson, *Silent Spring*, 1962.

Across the tree of life, female animals share biological characteristics placing them at increased risk for similar diseases and disorders. (The term ‘female’ is expanding to include a broader range of individuals. For the purpose of this paper, the term denotes individuals who produce larger gametes with the corresponding reproductive physiology.) These shared vulnerabilities can be a source of insight and innovation in women’s health, promoting collaborations benefitting the health of females across species. Despite this promise, many of these connections remain essentially unexamined. As anthropogenic environmental change increasingly threatens life on Earth, the health of female animals has unprecedented significance for the health of human females. (In this manuscript, the term ‘animals’ is used to describe nonhuman animals and the term ‘human’ to describe human animals.)

While a similar nexus of vulnerabilities also connects the health of male animals, women’s health research—historically under-resourced—has emerged as a global priority (1–4). Evidence that the health effects of climate change and accelerated environmental degradation disproportionately impact women and girls, reinforces the importance and urgency of a female focus (1). Examining unique health vulnerabilities of female animals also aligns with conservation concerns (5). Female fertility is often the critical limiting factor in population growth and species survival. Emerging threats to female fertility should, therefore, inform and shape efforts to mitigate the high rate of species extinction and loss of global biodiversity (5, 6).

Awareness of these shared, species-spanning female health vulnerabilities can improve women’s health in several ways. First, it can accelerate the identification of environmental hazards endangering human females. The health of female mammals,

**Competing Interest:** The authors declare no competing interest.

**Received:** January 3, 2022. **Accepted:** April 11, 2022

© The Author(s) 2022. Published by Oxford University Press on behalf of the National Academy of Sciences. This is an Open Access article distributed under the terms of the Creative Commons Attribution-NonCommercial-NoDerivs licence (<https://creativecommons.org/licenses/by-nc-nd/4.0/>), which permits non-commercial reproduction and distribution of the work, in any medium, provided the original work is not altered or transformed in any way, and that the work is properly cited. For commercial re-use, please contact [journals.permissions@oup.com](mailto:journals.permissions@oup.com)

birds, reptiles, and fish living in and around human communities has become increasingly relevant to women's health as anthropogenic changes blur the boundaries that once demarcated human versus animal environments. In the 21st century, all female animals—including every human female—have become canaries and the Earth, a shared, planetary coal mine (7).

Examining shared vulnerabilities across species can also help to identify species in which females have evolved a level of resistance to pathological processes. The biological diversity found in nature has been shaped by challenges encountered in wide-ranging ecologies. Physiologic adaptations have evolved to counter these challenges and optimize survival and reproduction. These optimized solutions can serve as a blueprint for developing novel and more effective approaches to both female and male health concerns (8–12).

For insights arising from either disease vulnerability or resistance in other species to emerge, however, human health communities must recognize the critical relevance of animal health to the care of human patients. This calls for the integration of evolutionary, ecological, conservation, and veterinary perspectives into the education of human medical professionals and paraprofessionals (13).

## Shared Vulnerability

For nearly a century, British miners carried canaries into mine-shafts to detect carbon monoxide leaks. Animal sentinels have since become an important source of information about environmental dangers for humans (14). However, sentinels have not been used to specifically identify hazards that place women, girls, and other female animals at increased risk. While the zoonotic origins of COVID-19 focused global attention on the interdependence of human and animal health, the connections extend far beyond infectious disease. The disproportionate impact of anthropogenic environmental change on the health of human females includes rising rates of noncommunicable diseases (NCDs) (1, 4, 15). Many of the NCDs impacting the health of women may also develop in other female animals (16). While socioeconomic disparities and the inequitable distribution of power are recognized as promoters of disease and disability in women (2, 4), less well-examined are the ancient biological pathways that connect female lives and health vulnerabilities.

Female fish, amphibians, reptiles, and birds share significantly overlapping health vulnerabilities. In a range of vertebrate species, for example, rising temperatures can accelerate aging of female oocytes, promoting embryo loss and reducing the likelihood of conception and successful gestation (17, 18). Especially strong connections can be found between human and nonhuman female mammals who are particularly vulnerable to rising levels of environmental toxins and pollutants (19–21). Hormonal contraceptives and endocrine-disrupting chemicals bind to estrogen receptors and are highly lipophilic. Female mammals—whose percentage of body fat mass exceeds that of males—therefore, accumulate higher concentrations of these contaminants over their lifetimes (20). This not only disproportionately exposes females themselves to carcinogenic and other disease-promoting agents, it endangers their offspring. Maternal exposures raise the risk of congenital syndromes (21, 22) and expose newborns to concentrated chemicals released with lactation (21, 23–25). Because environmental exposures during gestation and early life can shape adult and some intergenerational health vulnerabilities, the reproductive health of females often plays a central

role in shaping the overall health and stability of species (6, 26).

These shared vulnerabilities should serve as a call to action for every healthcare professional to deepen their engagement in initiatives focused on protecting ecosystems, biodiversity, and local environments. Yet, human health professionals may lack awareness of these connections and their importance to the health of their female (and male) human patients.

To increase awareness, we surveyed vertebrate lineages to identify the phylogenetic range of species in which pathologies impacting human females have also been identified in nonhuman females. Cases of mammary carcinoma were identified in nearly every mammalian order, and endometrial pathologies (including cancers) were identified in a phylogenetically wide range of mammalian species. Ovarian cancer cases were identified in not only mammalian species but within avian, reptilian, and piscine taxa. The occurrence of these pathologies across the tree of life points to an ancient origin of vulnerabilities as well as the interdependence of environments, genes, and species-specific genomes in shaping disease risk (Fig. 1).

## The Case for Expanded Surveillance

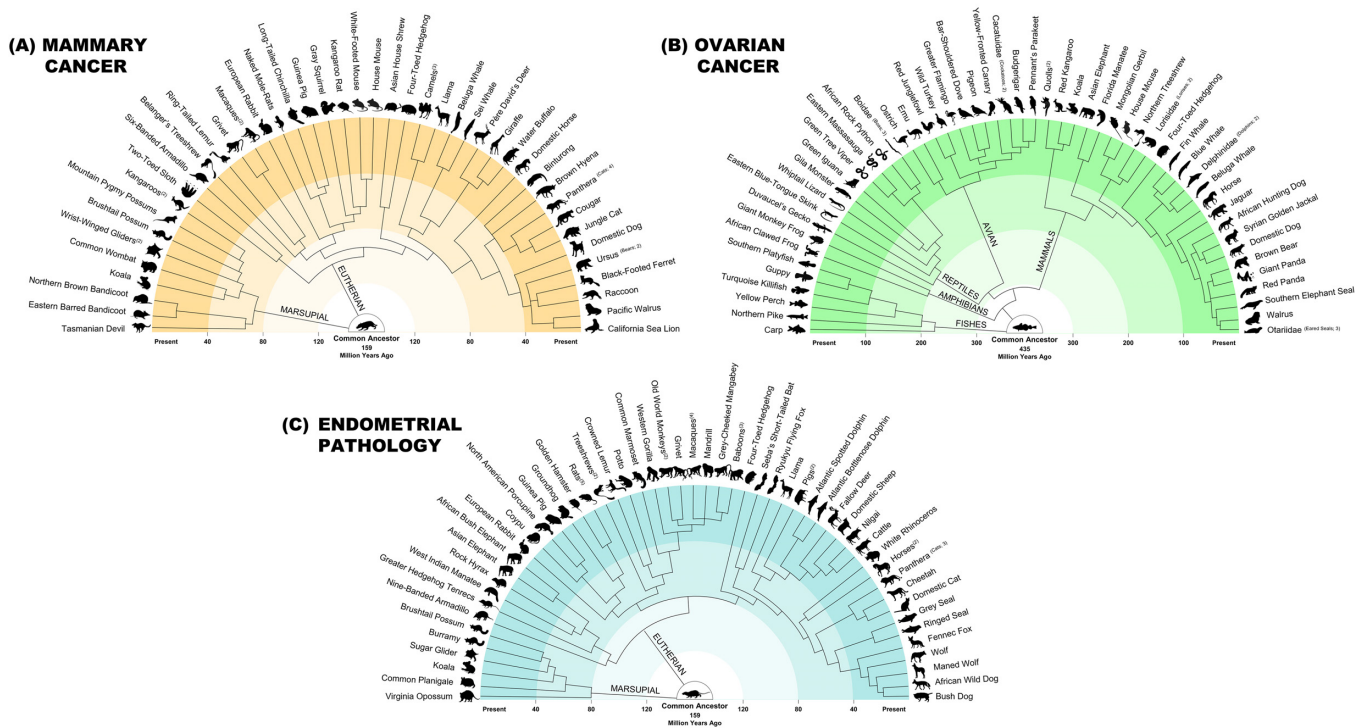
In recent decades, a heightened understanding of the interdependence of human, animal, and environmental health has fueled interest in and the adoption of One Health initiatives. Surveillance of animals living in key ecological contexts for emerging infectious diseases (EIDs) that may spill into the human population exemplifies how a One Health approach can protect lives. The zoonotic origins of the recent pandemic cast light on the value of One Health surveillance efforts (27–32) focused on zoonotic (communicable) diseases (30, 31, 33–35). NCDs have not been a central focus. Yet, some currently running EID surveillance programs (30, 31, 33–35) have infrastructure that could also identify respiratory diseases, congenital abnormalities, neurological disorders, and other NCDs linked to environmental contaminants in free-ranging animals (36). Expansion of surveillance efforts may provide early warning of novel environmental hazards, an increasingly urgent concern given the growing number of contaminants and exposures implicated in human (4, 15, 36), and in some cases especially female, deaths (1). While this is a global challenge, the urgency is greatest in regions suffering disproportionate levels of ecological degradation.

Specific outbreaks of NCDs in females have already drawn the attention of human health professionals, providing critical information for women's health. Unexpectedly high rates of adenocarcinoma, including mammary carcinoma among wild beluga whales in St. Lawrence Estuary between 1983 and 1999, for example, were linked to carcinogenic contaminants and higher cancer rates among local women (37, 38). Similarly, increased identification of cervical and other urogenital carcinomas in California sea lions exposed to both the herpesvirus and organochlorides (38–40) has heightened awareness of parallel and combined cancer exposures risks in human communities (36, 41, 42).

## Resilience: Evolved Adaptations

In some species, females have evolved adaptations which may confer resistance to diseases of women and girls. Understanding the biology underlying these adaptations can guide innovation in women's health (Fig. 2). This is a biomedical application of biomimicry, an approach to addressing human challenges by

## PHYLOGENIES OF VULNERABILITY



**Fig. 1. Vulnerability to challenges in women's health exists across a phylogenetically wide range of species.** These phylogenies feature selected species (rather than a comprehensive taxonomy) to illustrate the ancient origins and phylogenetically widespread nature of vulnerability to common challenges in women's health. (A) Vulnerability to mammary cancer is found across a wide range of mammalian species. (B) Vulnerability to ovarian cancer is found across vertebrate lineages. (C) Vulnerability to common human endometrial pathologies can be found in phylogenetically diverse species. Species lists were uploaded to TimeTree (<http://www.timetree.org>) and images were created and annotated in Interactive Tree of Life (iTOL, <https://itol.embl.de/>). Superscript numbers indicate the number of species with vulnerabilities in the grouping. Species images were obtained from Phylopic.org. Full image credits and species references are listed in the Supplementary Materials.

finding effective biological solutions evolved in other species (9, 10, 43). While evolutionary tradeoffs and constraints may limit this approach, biological systems regulating female physiology are highly conserved across the metazoan lineage creating the potential for translating evolved adaptations in other species into strategies countering human pathology. There is growing interest in medical biomimicry (sometimes referred to as bioinspired medicine). In recent years, a number of species have been identified in which the physiology of females appears to confer a level of resistance to women's health challenges from infertility and cardiovascular disease to cancer, osteoporosis, and gestational hypertension (8, 10, 44–46).

### Infertility

Embryo preservation is a central challenge for many advanced reproductive technologies (47). In over 130 mammals, blastocyst development may become delayed or arrested during what is called embryonic diapause. Embryonic diapause provides reproductive benefit by providing some flexibility (delay) in the timing of offspring birth. Diapause has been identified in a phylogenetically wide range of mammals from nine-banded armadillos and bears, to pinnipeds and fruit bats. Many of the pathways and genes associated with embryonic diapause in other species are conserved in humans and may, therefore, guide innovation in embryo preservation strategies for women undergoing fertility treatments (48).

### Reproductive Senescence

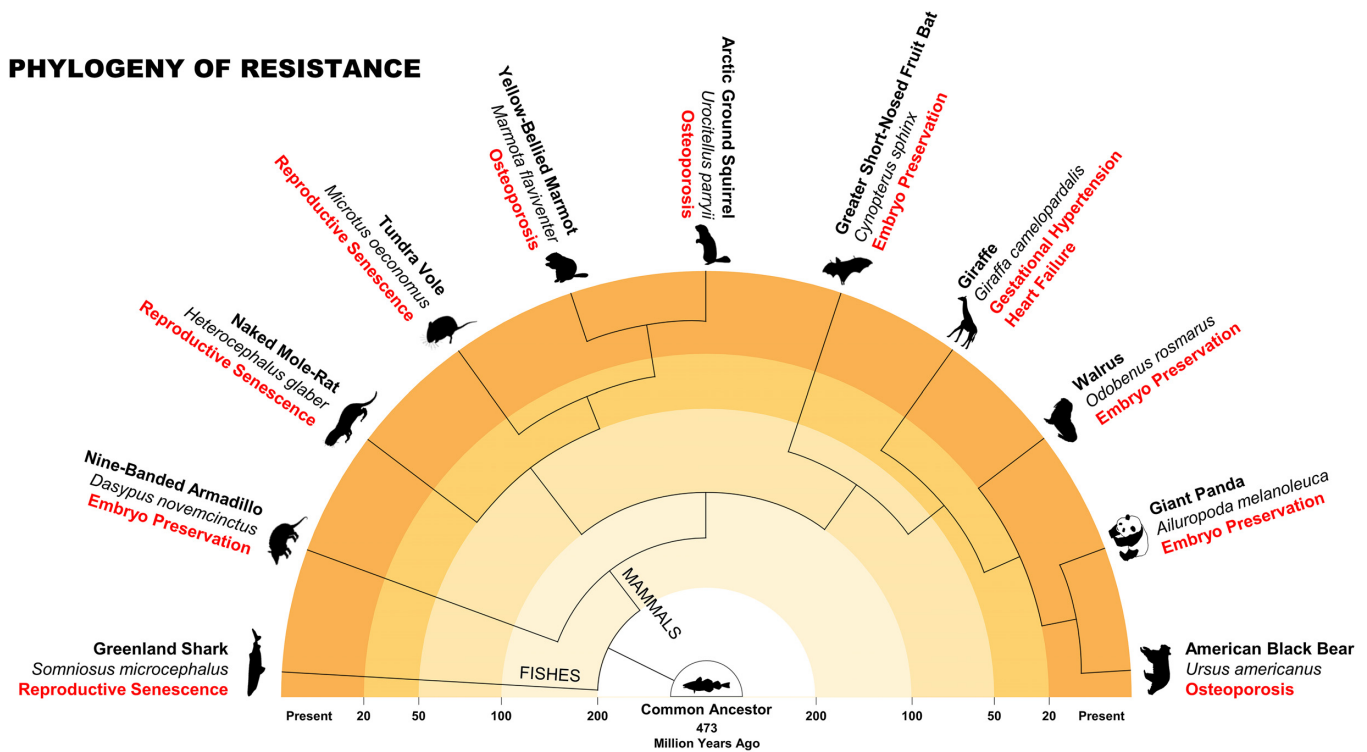
Reproductive senescence limits female fertility, imposing medical, occupational, and social constraints on women. By contrast, notable reproductive longevity (minimal decline in fertility with age) is found in a number of both mammalian and nonmammalian species from the tundra vole (49) and naked mole rat (6, 11, 50) to the Greenland shark (51). The biological pathways underlying reproductive longevity in these species may guide innovation in women's fertility preservation.

### Osteoporosis

In women, especially postreproductive women, prolonged physical inactivity increases the risk of bone loss and osteoporosis (12, 52, 53). In comparison, brown and black bears, yellow-bellied marmots (54), Arctic squirrels (55), and other hibernating mammals have evolved adaptations, which provide them with some resistance to bone loss despite lengthy periods of inactivity. A number of investigators are exploring the biological mechanisms underlying this resistance.

### Heart Failure with Preserved Ejection Fraction (HFpEF)

Hypertension, diagnosed in humans with systolic or diastolic blood pressures exceeding 130 mmHg or 80 mmHg, respectively (56), contributes to two of the most significant health concerns



**Fig. 2. Bioinspired medicine and women's health.** Evolved physiologic adaptations in other species may confer a level of resistance to challenges in women's health. The biological pathways underlying resistance can be a source of innovative solutions for women's health issues ranging from infertility, reproductive senescence, and cardiovascular disease to cancer, osteoporosis, and gestational hypertension. Species images were obtained from Phylogip.org. Full image credits and species references are listed in the Supplementary Materials.

in women: heart failure with preserved ejection fraction (HFpEF) and gestational hypertension. Blood pressure in adult giraffes may exceed 250 mmHg (57). Yet, giraffe appear to have evolved adaptations protecting their hearts from the adverse effects of longstanding hypertension that play a central role in the pathogenesis of HFpEF, the leading cause of heart failure in women (58). Identifying the mechanisms through which this resistance occurs may provide a guide for HFpEF prevention strategies in women.

### Gestational Hypertension

In humans, gestational hypertension (with or without associated preeclampsia) is defined as abnormally high blood pressure (systolic or diastolic blood pressure  $\geq 140$  mmHg and 90 mmHg, respectively) arising after 20 weeks of pregnancy (59). Gestational hypertension is associated with significantly worsened fetal and maternal outcomes (60). Pregnant giraffe appear to have evolved adaptations which protect both mother and calf from the consequences of blood pressure levels which would seriously endanger human pregnancies (56, 59). The unique characteristics of giraffe gestation, placentation, or placental function could inspire the development of protective strategies for women with pre-eclampsia and other forms of gestational hypertension.

While these examples present certain species as potentially helpful for women's health challenges, the critical insight is that biodiversity itself is an invaluable resource for biomedical innovation. However, the natural world can only be an enduring source of lifesaving insights if our efforts to understand it, do not destroy

it. Protecting, rather than exploiting other species, is the path to a healthy human future (12, 53–55, 61, 62).

### Women's Health Meets One Health, Meets Planetary Health

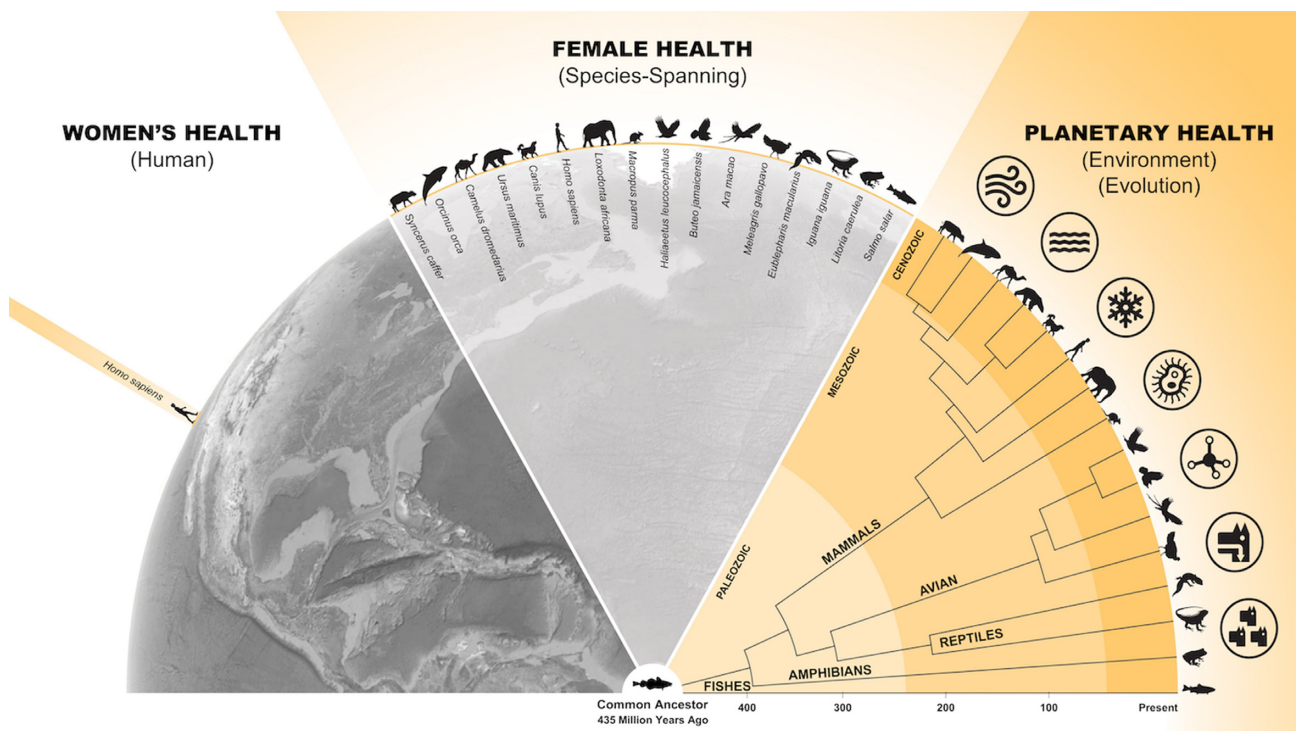
Over sixty years ago, *Silent Spring*, Rachel Carson's pathbreaking book, launched the modern environmental movement. Within two years of its publication Carson would die from complications of breast cancer, a pathology now linked to the same chemicals she had implicated in the devastation of reproduction in female birds (62). "In nature, nothing exists alone" (63) she cautioned. Carson's words remain as prescient and powerful today as they were decades ago when she drew the world's attention to the interdependent health of all life on Earth (Fig. 3).

In nature, no female animal exists alone. A species-spanning sisterhood promises new knowledge, innovation, and hope. There are many benefits to moving beyond anthropocentric and androcentric traditions in medicine. Foremost among these is the clarity of vision to recognize the key to safeguarding the future of animals across the tree of life: protecting the planet and the biodiversity it supports.

### Acknowledgments

The authors want to thank Oliver Uberti, Peter Wong, Yaochi Li, Brian Bergmark (MD), and Annika Linde (DVM, PhD) for their help with designing the figures, Jennifer Head (PhD) for help with data, and Dana M. Williams and Amelia Reynolds for help preparing the final manuscript. We thank Anneke Moresco (DVM, PhD) for





**Fig. 3. Expanded perspectives provide insight for innovation in women's health.** Moving beyond human-centered and male-centered traditions in medicine can strengthen our understanding of the causes of disease and guide development of effective therapeutic and prevention strategies. Novel insights emerge from perspectives that traverse species, sex, and gender and are deeply informed by evolution and the environment. Figure designed by B. Natterson-Horowitz and Oliver Uberti.

the generous feedback during manuscript revisions. The authors would like to thank Peter Rabinowitz (MD, MPH) for guidance and advice on the paper.

## Supplementary Material

Supplementary material is available at [PNAS Nexus](https://doi.org/10.1073/pnas.2019111111) online.

## Funding

A.M.B. was supported in part by the NIH grant U54 CA217376. B.N.H. and D.Z. declare no funding.

## Authors' Contributions

All authors contributed to the conception, drafting, and finalization of the manuscript.

## Data Sharing

There is no original data in this work.

## References

- World Health Organization. 2014. Gender, climate change and health. Geneva: World Health Organization.
- World Health Organization. 2022. WHO pledges extensive commitments towards women's empowerment and health. Geneva: World Health Organization.
- Peters SA, Woodward M, Jha V, Kennedy S, Norton R. 2016. Women's health: a new global agenda. *BMJ Glob Health* 1:e000080.
- Bonita R, Beaglehole R. 2015. Women and NCDs: overcoming the neglect. *Glob Health Act* 8:23742.
- Comizzoli P, Songsasen N, Wildt DE. 2010. Protecting and extending fertility for females of wild and endangered mammals. In *Oncofertility. Cancer Treatment and Research*, vol 156. Woodruff T, Zoloth L, Campo-Engelstein L, Rodriguez S (eds). Boston (MA): Springer. [https://doi.org/10.1007/978-1-4419-6518-9\\_7](https://doi.org/10.1007/978-1-4419-6518-9_7).
- Comizzoli P, Holt WV. 2019. Breakthroughs and new horizons in reproductive biology of rare and endangered animal species. *Biol Reprod*. 101:514–525.
- Natterson-Horowitz B, Bowers K. 2013. *Zoobiquity: the astonishing connection between human and animal health*. New York (NY): Vintage.
- Stenvinkel P, Painer J, Johnson RJ, Natterson-Horowitz B. 2020. Biomimetics – nature's roadmap to insights and solutions for burden of lifestyle diseases. *J Intern Med*. 287:238–251.
- Bhushan B. 2009. Biomimetics: lessons from nature—an overview. *Philos Trans R Soc A Math Phys Eng Sci*. 367:1445–1486.
- Abegglen LM, et al. 2015. Potential mechanisms for cancer resistance in elephants and comparative cellular response to DNA damage in humans. *JAMA* 314, 1850–1860.
- Edrey YH, Hanes M, Pinto M, Mele J, Buffenstein R. 2011. Successful aging and sustained good health in the naked mole rat: a long-lived mammalian model for biogerontology and biomedical research. *ILAR J*. 52:41–53.
- von Linde MB, Arevström L, Fröbert O. 2015. Insights from the den: how hibernating bears may help us understand and treat human disease. *Clin Transl Sci*. 8:601.
- Rabinowitz PM, Natterson-Horowitz BJ, Kahn LH, Kock R, Pappaioanou M. 2017. Incorporating one health into medical education. *BMC Med Educ*. 17:45.

14. Reif JS. 2011. Animal sentinels for environmental and public health. *Public Health Rep.* 126:50–57.
15. NCD Alliance. 2011. Non-communicable diseases: a priority for women's health and development. Geneva: NCD Alliance.
16. Munson L, Moresco A. 2007. Comparative pathology of mammary gland cancers in domestic and wild animals. *Breast Dis.* 28:7–21.
17. Ju J-C, Jiang S, Tseng J-K, Parks JE, Yang X. 2005. Heat shock reduces developmental competence and alters spindle configuration of bovine oocytes. *Theriogenology* 64:1677–1689.
18. Mirza U, Farooq UB, Anjum S. 2021. Impact of climate change on animal fertility. Hershey (PA): IGI Global.
19. Arbuckle TE. 2006. Are there sex and gender differences in acute exposure to chemicals in the same setting?. *Environ Res.* 101:195–204.
20. Jackson E, Shoemaker R, Larian N, Cassis L. 2017. Adipose tissue as a site of toxin accumulation. *Compr Physiol.* 7:1085–1135.
21. Nelson W, Wang Y-X, Sakwari G, Ding Y-B. 2019. Review of the effects of perinatal exposure to endocrine-disrupting chemicals in animals and humans. *Rev Environ Contam Toxicol.* 251: 131–184.
22. Kalliora C, et al. 2018. Association of pesticide exposure with human congenital abnormalities. *Toxicol Appl Pharmacol.* 346: 58–75.
23. Lindström G, Wingfors H, Dam M, van Bavel B. 1999. Identification of 19 polybrominated diphenyl ethers (PBDEs) in long-finned pilot whale (*Globicephala melas*) from the Atlantic. *Arch Environ Contam Toxicol.* 36:355–363.
24. van den Berg M, et al. 2017. WHO/UNEP global surveys of PCDDs, PCDFs, PCBs and DDTs in human milk and benefit–risk evaluation of breastfeeding. *Arch Toxicol.* 91:83–96.
25. Lahvis GP. 2017. What California sea lions exposed to domoic acid might teach us about autism: lessons for predictive and preventive medicine. *EPMA J.* 8: 229–235.
26. Zippel MN, Archie EA, Tung J, Altmann J, Alberts SC. 2019. Intergenerational effects of early adversity on survival in wild baboons. *Elife.* 8:e47433.
27. Pesavento PA, Agnew D, Keel MK, Woolard KD. 2018. Cancer in wildlife: patterns of emergence. *Nat Rev Cancer* 18:646–661.
28. Neo JPS, Tan BH. 2017. The use of animals as a surveillance tool for monitoring environmental health hazards, human health hazards and bioterrorism. *Vet Microbiol.* 203:40–48.
29. Akdesir E, et al. 2018. Causes of mortality and morbidity in free-ranging mustelids in Switzerland: necropsy data from over 50 years of general health surveillance. *BMC Vet Res.* 14: 1–19.
30. Munyua PM, et al. 2019. Successes and challenges of the One Health approach in Kenya over the last decade. *BMC Pub Health* 19:465.
31. Hawkins CE, et al. 2006. Emerging disease and population decline of an island endemic, the Tasmanian devil *Sarcophilus harrisii*. *Biol Conserv.* 131:307–324.
32. Kelly TR, Karesh WB, Johnson CK. 2017. One health proof of concept: bringing a transdisciplinary approach to surveillance for. *Prev Vet Med.* 137:112–118.
33. Duncan C, Backus L, Lynn T, Powers B, Salman M. 2008. Passive, opportunistic wildlife disease surveillance in the Rocky Mountain Region, USA. *Transbound Emerg Dis.* 55:308–314.
34. Mbabu M, et al. 2014. Establishing a one health office in Kenya. *Pan Afr Med J.* 19:106.
35. Miller LA, Royer CM, Pinkerton KE, Schelegle ES. 2017. Nonhuman primate models of respiratory disease: past, present, and future. *ILAR J.* 58:269–280.
36. Rabinowitz PM, Scotch ML, Conti LA. 2010. Animals as sentinels: using comparative medicine to move beyond the laboratory. *ILAR J.* 51:262–267.
37. Martineau D, et al. 2002. Cancer in wildlife, a case study: Beluga from the St. Lawrence Estuary, Québec, Canada. *Environ Health Perspect.* 110:285.
38. Bossart GD. 2011. Marine mammals as sentinel species for oceans and human health. *Vet Pathol.* 48:676–690.
39. King DP, et al. 2002. Otarine herpesvirus-1: a novel gammaherpesvirus associated with urogenital carcinoma in California sea lions (*Zalophus californianus*). *Vet Microbiol.* 86:131–137.
40. Newman SJ, Smith SA. 2006. Marine mammal neoplasia: a review. *Vet Pathol.* 43:865–880.
41. Gulland F, et al. 2020. Persistent contaminants and herpesvirus OtHV1 are positively associated with cancer in wild California sea lions (*Zalophus californianus*). *Front Mar Sci.* 7:1093.
42. Acevedo-Whitehouse K, Duffus AL. 2009. Effects of environmental change on wildlife health. *Philos Trans R Soc B Biol Sci.* 364:3429–3438.
43. Tian X, et al. 2013. High-molecular-mass hyaluronan mediates the cancer resistance of the naked mole rat. *Nature* 499:346–349.
44. Wininger K. 2020. Biomimicry and bioengineering in cardiovascular care. *Radiol Technol.* 91:267–281.
45. Suhail Y, et al. 2022. Tracing the cis-regulatory changes underlying the endometrial control of placental invasion. *Proc Natl Acad Sci.* 119:e2111256119.
46. Papper Z, et al. 2009. Ancient origin of placental expression in the growth hormone genes of anthropoid primates. *Proc Natl Acad Sci.* 106:17083–17088.
47. Barnea E, Absalon-Medina V. 2021. Embryo diapause as replicated by Assisted Reproductive Technologies (ART): modern applications of an ancient species survival mechanism. *GREM* 2:189–196.
48. Renfree MB, Fenelon JC. 2017. The enigma of embryonic diapause. *Development* 144:3199–3210.
49. Comizzoli P, Ottinger MA. 2021. Understanding reproductive aging in wildlife to improve animal conservation and human reproductive health. *Front Cell Dev Biol.* 9:680471.
50. Place NJ, et al. 2021. Germ cell nests in adult ovaries and an unusually large ovarian reserve in the naked mole-rat. *Reproduction* 161:89–98.
51. Nielsen J, et al. 2015. Eye lens radiocarbon reveals centuries of longevity in the Greenland shark (*Somniosus microcephalus*). *Org Biomol Chem.* 13:1673–1679.
52. McGee ME, et al. 2008. Decreased bone turnover with balanced resorption and formation prevent cortical bone loss during disuse (hibernation) in grizzly bears (*Ursus arctos horribilis*). *Bone.* 42:396–404.
53. McGee-Lawrence ME, Carey HV, Donahue SW, Donahue SW. 2008. Mammalian hibernation as a model of disuse osteoporosis: the effects of physical inactivity on bone metabolism, structure, and strength. *Am J Physiol Regul Integr Comp Physiol.* 295:R1999–R2014.
54. Wojda SJ, et al. 2012. Yellow-bellied marmots (*Marmota flaviventris*) preserve bone strength and microstructure during hibernation. *Bone.* 50:182–188.
55. Reilly BD, Franklin CE. 2016. Prevention of muscle wasting and osteoporosis: the value of examining novel animal models. *J Exp Biol.* 219:2582–2595.
56. Whelton PK, et al. 2018. 2017 ACC/AHA/AAPA/ABC/ACPM/AGS/APhA/ASH/ASPC/NMA/PCNA guideline for the prevention, detection, evaluation, and management of high blood pressure in adults: executive summary: a report of the American College of

- Cardiology/American Heart Association Task Force on clinical practice guidelines. *Hypertension* 71:1269–1324.
57. Natterson-Horowitz B et al. 2021. Did giraffe cardiovascular evolution solve the problem of heart failure with preserved ejection fraction?. *EMPH* 9:248–255.
  58. Tadic M, et al. 2019. Sex and heart failure with preserved ejection fraction: from pathophysiology to clinical studies. *J Clin Med*. 8:792.
  59. Brown MA, et al. 2018. Hypertensive disorders of pregnancy: IS-SHP classification, diagnosis, and management recommendations for international practice. *Hypertension* 72:24–43.
  60. Garovic VD, et al. 2022. Hypertension in pregnancy: diagnosis, blood pressure goals, and pharmacotherapy: a scientific statement from the American Heart Association. *Hypertension* 79:e21–e41.
  61. World Health Organization, UN Environment Programme, Convention on Biological Diversity. 2015. Connecting global priorities: biodiversity and human health. Geneva, New York (NY): World Health Organization and Secretariat of the Convention on Biological Diversity.
  62. Whitmee S, et al. 2015. Safeguarding human health in the Anthropocene epoch: report of The Rockefeller Foundation–Lancet Commission on planetary health. *Lancet*. 386: 1973–2028.
  63. Carson R. 1962. *Silent spring*. Boston (MA): Houghton Mifflin Harcourt.