

UCLA

UCLA Previously Published Works

Title

Nine Loci for Ocular Axial Length Identified through Genome-wide Association Studies, Including Shared Loci with Refractive Error

Permalink

<https://escholarship.org/uc/item/2xv4v76s>

Journal

American Journal of Human Genetics, 93(2)

ISSN

0002-9297

Authors

Cheng, Ching-Yu
Schache, Maria
Ikram, M Kamran
[et al.](#)

Publication Date

2013-08-01

DOI

10.1016/j.ajhg.2013.06.016

Peer reviewed

Nine Loci for Ocular Axial Length Identified through Genome-wide Association Studies, Including Shared Loci with Refractive Error

Ching-Yu Cheng,^{1,2,3,4,66} Maria Schache,^{5,66} M. Kamran Ikram,^{1,3,4,6,66} Terri L. Young,^{7,8,66} Jeremy A. Guggenheim,^{9,66} Veronique Vitart,^{10,66} Stuart MacGregor,^{11,66} Virginie J.M. Verhoeven,^{6,12} Veluchamy A. Barathi,^{1,3,13} Jiemin Liao,^{1,3} Pirro G. Hysi,¹⁴ Joan E. Bailey-Wilson,¹⁵ Beate St. Pourcain,^{16,17} John P. Kemp,^{16,17} George McMahon,^{16,17} Nicholas J. Timpson,^{16,17} David M. Evans,^{16,17} Grant W. Montgomery,¹¹ Aniket Mishra,¹¹ Ya Xing Wang,¹⁸ Jie Jin Wang,^{5,19} Elena Rochtchina,¹⁹ Ozren Polasek,²⁰ Alan F. Wright,¹⁰ Najaf Amin,¹² Elisabeth M. van Leeuwen,¹² James F. Wilson,²¹ Craig E. Pennell,²² Cornelia M. van Duijn,¹² Paulus T.V.M. de Jong,^{23,24} Johannes R. Vingerling,^{6,12} Xin Zhou,² Peng Chen,² Ruoying Li,² Wan-Ting Tay,³ Yingfeng Zheng,³ Merwyn Chew,³ Consortium for Refractive Error and Myopia, Kathryn P. Burdon,²⁵ Jamie E. Craig,²⁵ Sudha K. Iyengar,^{26,27,28,29} Robert P. Igo, Jr.,²⁶ Jonathan H. Lass, Jr.,^{26,27} The Fuchs' Genetics Multi-Center Study Group, Emily Y. Chew,³⁰ Toomas Haller,³¹ Evelin Mihailov,^{31,32} Andres Metspalu,³¹ Juho Wedenoja,³³ Claire L. Simpson,¹⁵ Robert Wojciechowski,^{15,34} René Höhn,³⁵ Alireza Mirshahi,³⁵ Tanja Zeller,³⁶ Norbert Pfeiffer,³⁵ Karl J. Lackner,³⁷ Wellcome Trust Case Control Consortium 2, Thomas Bettecken,^{38,68} Thomas Meitinger,^{38,39} Konrad Oexle,³⁹ Mario Pirastu,⁴⁰ Laura Portas,⁴⁰ Abhishek Nag,¹⁴ Katie M. Williams,¹⁴ Ekaterina Yonova-Doing,¹⁴ Ronald Klein,⁴¹ Barbara E. Klein,⁴¹ S. Mohsen Hosseini,⁴² Andrew D. Paterson,⁴² The Diabetes Control and Complications Trial/Epidemiology of Diabetes Interventions, and Complications Research Group, Kari-Matti Makela,⁴³ Terho Lehtimaki,⁴³ Mika Kahonen,⁴⁴ Olli Raitakari,⁴⁵ Nagahisa Yoshimura,⁴⁶ Fumihiko Matsuda,⁴⁷ Li Jia Chen,⁴⁸ Chi Pui Pang,⁴⁹ Shea Ping Yip,⁵⁰ Maurice K.H. Yap,⁹ Akira Meguro,⁵¹ Nobuhisa Mizuki,⁵¹ Hidetoshi Inoko,⁵² Paul J. Foster,⁵³ Jing Hua Zhao,⁵⁴ Eranga Vithana,³ E-Shyong Tai,^{2,13,55} Qiao Fan,² Liang Xu,¹⁸ Harry Campbell,²¹ Brian Fleck,⁵⁶ Igor Rudan,²¹ Tin Aung,^{1,3} Albert Hofman,¹² André G. Uitterlinden,^{12,57} Goran Bencic,⁵⁸ Chiea-Chuen Khor,^{1,59} Hannah Forward,²² Olavi Pärssinen,^{60,61} Paul Mitchell,¹⁹ Fernando Rivadeneira,¹² Alex W. Hewitt,^{5,62} Cathy Williams,¹⁷ Ben A. Oostra,⁶³ Yik-Ying Teo,^{2,64} Christopher J. Hammond,¹⁴ Dwight Stambolian,^{65,67} David A. Mackey,^{5,62,67} Caroline C.W. Klaver,^{6,12,67} Tien-Yin Wong,^{1,2,3,67} Seang-Mei Saw,^{1,2,3,4,67,*} and Paul N. Baird^{5,67,*}

¹Department of Ophthalmology, National University of Singapore and National University Health System, Singapore 119228, Singapore; ²Saw Swee Hock School of Public Health, National University of Singapore and National University Health System, Singapore 117597, Singapore; ³Singapore Eye Research Institute, Singapore National Eye Centre, Singapore 168751, Singapore; ⁴Centre for Quantitative Medicine, Office of Clinical Sciences, Duke-National University of Singapore Graduate Medical School, Singapore 169857, Singapore; ⁵Centre for Eye Research Australia (CERA), University of Melbourne, Royal Victorian Eye and Ear Hospital, Melbourne, VIC 3002, Australia; ⁶Department of Ophthalmology, Erasmus Medical Center, Rotterdam 3000 CA, the Netherlands; ⁷Department of Ophthalmology, Duke University Medical Center, Durham, NC 27710, USA; ⁸Division of Neuroscience and Behavioural Disorders, Duke-National University of Singapore, Graduate Medical School, Singapore 169857, Singapore; ⁹Centre for Myopia Research, School of Optometry, Hong Kong Polytechnic University, Kowloon, Hong Kong; ¹⁰Medical Research Council Human Genetics Unit, Institute of Genetics and Molecular Medicine, University of Edinburgh, Edinburgh EH4 2XU, UK; ¹¹Queensland Institute of Medical Research, Brisbane, QLD 4029, Australia; ¹²Department of Epidemiology, Erasmus Medical Center, Rotterdam 3000 CA, the Netherlands; ¹³Duke-National University of Singapore Graduate Medical School, Singapore 169857, Singapore; ¹⁴Department of Twin Research and Genetic Epidemiology, King's College London School of Medicine, London SE1 7EH, UK; ¹⁵Inherited Disease Research Branch, National Human Genome Research Institute, National Institutes of Health, Baltimore, MD 21224, USA; ¹⁶MRC Centre for Causal Analyses in Translational Epidemiology, School of Social and Community Medicine, University of Bristol, Bristol BS8 2BN, UK; ¹⁷School of Social and Community Medicine, University of Bristol, Bristol BS8 2BN, UK; ¹⁸Beijing Institute of Ophthalmology, Beijing Tongren Hospital, Capital University of Medical Science, Beijing 100730, China; ¹⁹Department of Ophthalmology, Centre for Vision Research, Westmead Millennium Institute, University of Sydney, Sydney, NSW 2145, Australia; ²⁰Faculty of Medicine, University of Split, Croatia, Split 21000, Croatia; ²¹Centre for Population Health Sciences, University of Edinburgh, Edinburgh EH8 9AG, UK; ²²School of Women's and Infants' Health, The University of Western Australia, Perth, WA 6009, Australia; ²³Netherlands Institute of Neuroscience (NIN), An Institute of the Royal Netherlands Academy of Arts and Sciences (KNAW), Amsterdam 1105 BA, the Netherlands; ²⁴Department of Ophthalmology, Academisch Medisch Centrum, Amsterdam 1105 AZ, the Netherlands and Leids Universitair Medisch Centrum, Leiden 2300 RC, the Netherlands; ²⁵Department of Ophthalmology, Flinders University, Adelaide, SA 5001, Australia; ²⁶Department of Epidemiology and Biostatistics, Case Western Reserve University, Cleveland, OH 44106, USA; ²⁷Department of Ophthalmology and Visual Sciences, Case Western Reserve University and University Hospitals Eye Institute, Cleveland, OH 44106, USA; ²⁸Department of Genetics, Case Western Reserve University, Cleveland, OH 44106, USA; ²⁹Center for Clinical Investigation, Case Western Reserve University, Cleveland, OH 44106, USA; ³⁰National Eye Institute, National Institutes of Health, Bethesda, MD 20892, USA; ³¹Estonian Genome Center, University of Tartu, Tartu 51010, Estonia; ³²Institute of Molecular and Cell Biology, University of Tartu, Tartu 51010, Estonia; ³³Department of Public Health, Hjelt Institute, University of Helsinki, Helsinki 00014, Finland; ³⁴Department of Epidemiology, Johns Hopkins Bloomberg School of Public Health, Baltimore, MD 21205, USA; ³⁵Department of Ophthalmology, University Medical Center Mainz, Mainz 55131, Germany; ³⁶Clinic for General and Interventional Cardiology, University Heart Center Hamburg, Hamburg 20246, Germany; ³⁷Department of Clinical Chemistry and Laboratory Medicine, University Medical Center Mainz, Mainz 55131, Germany;

Refractive errors are common eye disorders of public health importance worldwide. Ocular axial length (AL) is the major determinant of refraction and thus of myopia and hyperopia. We conducted a meta-analysis of genome-wide association studies for AL, combining 12,531 Europeans and 8,216 Asians. We identified eight genome-wide significant loci for AL (*RSPO1*, *C3orf26*, *LAMA2*, *GJD2*, *ZNRF3*, *CD55*, *MIP*, and *ALPL2*) and confirmed one previously reported AL locus (*ZC3H11B*). Of the nine loci, five (*LAMA2*, *GJD2*, *CD55*, *ALPL2*, and *ZC3H11B*) were associated with refraction in 18 independent cohorts ($n = 23,591$). Differential gene expression was observed for these loci in minus-lens-induced myopia mouse experiments and human ocular tissues. Two of the AL genes, *RSPO1* and *ZNRF3*, are involved in Wnt signaling, a pathway playing a major role in the regulation of eyeball size. This study provides evidence of shared genes between AL and refraction, but importantly also suggests that these traits may have unique pathways.

Introduction

Myopia (nearsightedness), the most common form of refractive errors, is an ocular disorder of major public health importance worldwide, particularly in Asia. About 40% of adults and 80%–90% of children completing high school are myopic in urban areas in East Asian countries, and 10%–20% of them have high myopia.^{1,2} Uncorrected myopia and refractive errors are leading causes of visual impairment.^{3–6} Furthermore, adults with high myopia are at a substantially higher risk of potentially blinding pathologies, including glaucoma, retinal detachment, and myopic maculopathy.⁷ The correction of myopia and refractive errors in general by spectacles, contact lenses, or refractive surgery can entail substantial socioeconomic costs^{8,9} and does not treat the underlying mechanism of disease.

Myopia develops primarily from an eye that is excessively elongated axially and thus ocular axial length (AL) is an attractive endophenotype to investigate for several reasons. First, AL alone accounts for more than 40% of variation in refractive errors.^{10–12} MRI studies of the orbit have also demonstrated that extremely highly myopic eyes are generally prolate in shape with unusually long ALs, leading to associated visually disabling complications such as posterior staphylomas.^{13,14} Second,

the heritability of AL (67% to 94%) is consistently higher than that for refraction.^{15–18} Furthermore, the measurement of AL (in mm) is more objective, precise, and reproducible compared to assessments of refractive status.

Although more than 30 myopia loci have been implicated in previous linkage and genome-wide association studies (GWASs), there have been few reports of AL-specific loci. A recent GWAS identified an association at *ZC3H11B* for both AL and high myopia in Asians.¹⁹ To identify additional genetic variants that modulate AL, we conducted the largest international GWAS meta-analysis of AL to date in cohorts participating in the Consortium for Refractive Error and Myopia (CREAM).^{20,21}

Subjects and Methods

We used a three-stage approach.²⁰ First, we performed a GWAS meta-analysis in 12,531 European ancestry individuals (stage 1). Second, we tested the cross-ethnic transferability of the associations from this first stage in 8,216 Asian ancestry individuals (stage 2). Lastly, we conducted a meta-analysis combining individuals of European and Asian ancestry, totaling 20,747 individuals (stage 3). We subsequently examined the effect of the associated AL loci on spherical equivalent (SE) in 23,591 individuals from 18 other independent cohorts.

³⁸Institute of Human Genetics, Helmholtz Zentrum München, Neuherberg 85764, Germany; ³⁹Institute of Human Genetics, Technical University Munich, Munich 81675, Germany; ⁴⁰Institute of Population Genetics, National Research Council of Italy, Sassari 07100, Italy; ⁴¹Department of Ophthalmology and Visual Sciences, University of Wisconsin School of Medicine and Public Health, Madison, WI 53705, USA; ⁴²Program in Genetics and Genome Biology, The Hospital for Sick Children and Institute for Medical Sciences, University of Toronto, Toronto, ON M5G 1X8, Canada; ⁴³Department of Clinical Chemistry, Filmlab Laboratories, Tampere University Hospital and School of Medicine, University of Tampere, Tampere 33520, Finland; ⁴⁴Department of Clinical Physiology, Tampere University Hospital and School of Medicine, University of Tampere, Tampere 33521, Finland; ⁴⁵Research Centre of Applied and Preventive Cardiovascular Medicine, University of Turku, and Department of Clinical Physiology and Nuclear Medicine, Turku University Hospital, Turku 20041, Finland; ⁴⁶Department of Ophthalmology and Visual Sciences, Kyoto University Graduate School of Medicine, Kyoto 606-8507, Japan; ⁴⁷Department of Human Disease Genomics, Kyoto University Graduate School of Medicine, Kyoto 606-8501, Japan; ⁴⁸Department of Ophthalmology and Visual Sciences, The Chinese University of Hong Kong, Prince of Wales Hospital, Shatin, Hong Kong; ⁴⁹Department of Ophthalmology and Visual Sciences, The Chinese University of Hong Kong, Hong Kong Eye Hospital, Kowloon, Hong Kong; ⁵⁰Department of Health Technology and Informatics, The Hong Kong Polytechnic University, Hong Kong; ⁵¹Department of Ophthalmology and Visual Sciences, Yokohama City University Graduate School of Medicine, Yokohama 236-0004, Japan; ⁵²Department of Genetic Information, Division of Molecular Life Science, Tokai University School of Medicine, Kanagawa 259-1193, Japan; ⁵³NIHR Biomedical Research Centre at Moorfields Eye Hospital and UCL Institute of Ophthalmology, London EC1V 2PD, UK; ⁵⁴MRC Epidemiology Unit, Institute of Metabolic Sciences, University of Cambridge, Cambridge CB2 0QQ, UK; ⁵⁵Department of Medicine, National University of Singapore and National University Health System, Singapore 119228, Singapore; ⁵⁶Princess Alexandra Eye Pavilion, Edinburgh EH3 9HA, UK; ⁵⁷Department of Internal Medicine, Erasmus Medical Center, Rotterdam 3000 CA, the Netherlands; ⁵⁸Department of Ophthalmology, Sisters of Mercy University Hospital, Zagreb 10000, Croatia; ⁵⁹Division of Human Genetics, Genome Institute of Singapore, Singapore 138672, Singapore; ⁶⁰Department of Health Sciences and Gerontology Research Center, University of Jyväskylä, Jyväskylä 40014, Finland; ⁶¹Department of Ophthalmology, Central Hospital of Central Finland, Jyväskylä 40620, Finland; ⁶²Centre for Ophthalmology and Visual Science, Lions Eye Institute, University of Western Australia, Perth, WA 6009, Australia; ⁶³Department of Clinical Genetics, Erasmus Medical Center, Rotterdam 3000 CA, the Netherlands; ⁶⁴Department of Statistics and Applied Probability, National University of Singapore, Singapore 117546, Singapore; ⁶⁵Department of Ophthalmology, University of Pennsylvania, Philadelphia, PA 19104, USA;

⁶⁶These authors contributed equally to this work

⁶⁷These authors contributed equally to this work

⁶⁸Present address: Max Planck Institute of Psychiatry, Munich 80804, Germany

*Correspondence: seang_mei_saw@nuhs.edu.sg (S.-M.S.), pnb@unimelb.edu.au (P.N.B.)

<http://dx.doi.org/10.1016/j.ajhg.2013.06.016>. ©2013 by The American Society of Human Genetics. All rights reserved.

Table 1. Study Cohorts and Summary of Axial Length Measures

Ethnicity	n	Study	Mean Age (SD), Years	Men, %	Axial Length		
					Mean (SD), mm	Range, mm	Methods of Measurement
European	2,069	ALSPAC Children	15.5 (0.3)	46.5	23.41 (0.87)	20.49–26.57	IOLmaster
	1,316	BATS/TEST	24.6 (11.9)	43.2	23.25 (0.87)	20.03–28.25	IOLmaster
	1,030	BMES	73.8 (7.8)	59.5	23.45 (1.04)	19.94–29.86	IOLmaster
	826	Croatia-Korcula	55.8 (13.4)	35.1	23.19 (1.06)	18.55–28.24	Echoscan US-1800
	352	Croatia-Split	50.0 (14.2)	44.3	23.39 (0.90)	20.98–27.3	Echoscan US-1800
	552	Croatia-Vis	56.0 (14.0)	39.7	23.08 (0.90)	20.09–26.48	Echoscan US-1800
	2,397	ERF4	48.7 (14.2)	55.5	23.22 (1.04)	19.79–27.30	A scan
	503	ORCADES	57.6 (13.7)	43.3	23.70 (1.08)	20.69–28.00	IOLmaster
	1,011	Raine	20.1 (0.4)	51.6	23.56 (0.89)	20.36–27.94	IOLmaster
	676	RS1	78.4 (4.4)	49.0	23.52 (1.06)	20.44–27.72	Lenstar LS900
	1,085	RS2	72.0 (4.7)	47.2	23.50 (1.14)	19.87–28.00	Lenstar LS900
	714	RS3	59.3 (5.8)	42.6	23.56 (1.27)	19.79–28.45	Lenstar LS900 and A scan
Asian	564	BES	62.05 (8.4)	35.5	23.07 (1.15)	19.90–30.36	Lenstar LS900
	1,720	SCES	57.6 (9.0)	51.7	23.95 (1.31)	20.87–32.66	IOLmaster
	926	SCORM	10.8 (0.8)	51.7	24.13 (1.12)	21.05–28.20	Echoscan US-800
	2,141	SiMES	57.6 (10.7)	49.3	23.57 (1.04)	20.48–31.11	IOLmaster
	2,120	SINDI	55.9 (8.8)	51.4	23.41 (1.08)	19.07–31.59	IOLmaster
	745	STARS Parents	38.8 (5.3)	51.0	24.64 (1.51)	21.66–31.57	IOLmaster

Abbreviations are as follows: ALSPAC, Avon Longitudinal Study of Parents and Children; BATS, Brisbane Adolescent Twins Study; TEST, Twins Eye Study in Tasmania; BMES, Blue Mountains Eye Study; ERF, Erasmus Rucphen Family Study; ORCADES, Orkney Complex Disease Study; RS, Rotterdam Study; BES, Beijing Eye Study; SCES, Singapore Chinese Eye Study Singapore; SCORM, Singapore Cohort Study of the Risk Factors for Myopia; SiMES, Singapore Malay Eye Study; SINDI, Singapore Indian Eye Study; STARS, Strabismus, Amblyopia, and Refractive Error Study of Preschool Children; SD, standard deviation.

Study Populations in CREAM

All studies participating in this meta-analysis are part of the CREAM.^{20,21} The discovery cohorts included 12,531 European ancestry individuals from 18 studies (Table 1), including ALSPAC Children,²² BATS/TEST,²³ BMES,^{24,25} Croatia-Korcula, Croatia-Split, Croatia-Vis,²⁶ ERF,^{27,28} RS1, RS2, RS3,²⁹ ORCADES,³⁰ and RAINE.^{31–33} In addition, 8,216 Asian ancestry individuals from six cohorts (Table 1) (BES,³⁴ SCES,³⁵ SCORM,³⁶ SiMES,³⁷ SINDI,³⁵ and STARS Parents³⁸) were included in the replication stage. General methods, demographics, and phenotyping of the study cohorts have previously been described extensively and are provided in brief in Table 1. All studies were performed with the approval of their local Medical Ethics Committee, and written informed consent was obtained from all participants in accordance with the Declaration of Helsinki.

Independent Populations in CREAM

To examine whether the loci affecting AL contributed to SE, we studied associations with SE in an additional 18 studies (Table S1 available online): 1958 British Birth Cohort,³⁹ ALSPAC Mothers,⁴⁰ ANZRAG,⁴¹ AREDS 1a1b, AREDS 1c,^{15,16} DCCT,⁴² EGCUT,⁴³ FECD,⁴⁴ FES,⁴⁵ FITSA,⁴⁶ GHS 1, GHS 2, KORA,^{47–50} OGP Talana,⁵¹ SP2,⁵² TwinsUK,⁵³ WESDR,⁵⁴ and Young Finns Study.⁵⁵ Only SE (not AL) measures were available in these additional 18 CREAM studies. Detailed study design and methodology of these studies have been published elsewhere. Descriptive data

on demographics and phenotypes of these cohorts are shown in brief in Table S1.

Phenotype Measurements

All studies used a similar protocol for ocular phenotype measurements. Eligible participants underwent an ophthalmologic examination including measurements of AL and refraction of both eyes. AL was measured with either optical laser interferometry or A-scan ultrasound biometry (Table 1). Refraction was measured by autorefractor and/or subjective refraction (Table S1). SE was calculated according to the standard formula (SE = sphere + 1/2 cylinder).

Genotyping and Imputation

The study samples were genotyped on either the Illumina or Affymetrix platforms. Each study performed SNP imputation with the genotype data, together with the HapMap Phase II ethnically matched reference panels (CEU, JPT+CHB, or the four HapMap populations) on the basis of HapMap build 36 databases (release 22 or 24). The Markov Chain Haplotyping software, IMPUTE^{56,57} or MACH,⁵⁸ were adopted for imputation. A detailed description regarding genotyping platforms and imputation procedures for each study is provided in Tables S2 and S3.

Stringent quality control of genotype data was applied in each cohort. Samples with low call rates (<95%) or with gender discrepancies were excluded. Cryptically related samples and outliers in population structure from principal component analyses were

also excluded. SNPs flagged with missingness >5%, gross departure from Hardy-Weinberg equilibrium (p value < 10^{-6} , except in the ALSPAC study where a threshold of < 10^{-7} was used), and minor allele frequency (MAF) <1% were removed from further analyses.

Statistical Analysis

For each study, an allele-dosage regression model at each genotyped or imputed SNP was conducted to determine its association with AL as a quantitative trait as well as its association with SE. Individuals with prior refractive or cataract surgery or other intra-ocular procedures that could alter refraction were excluded. The mean of the right and left eyes was taken. When data from only one eye were available, the AL or SE of this eye was used. Sample outliers with AL value exceeding four standard deviations from the mean were excluded at the study level. We assumed an additive genetic model where the dosage of each SNP is a continuous variable ranging from 0 to 2 for minor alleles carried. Primary analysis for AL was adjusted for age, sex, and height (because height was consistently correlated with AL^{59,60}) and in the case of SE for age and sex. Additional adjustment for principal components was carried out according to the population substructure in each individual study.

The per-SNP meta-analyses were performed by METAL software with weighted inverse-variance approach, assuming fixed effects, because for initial discovery purposes, the fixed-effects model is preferred for increased statistical power.⁶¹ A Cochran's Q test was used to assess heterogeneity across studies.⁶² Imputation quality scores were reviewed for the top SNPs reported to ensure good imputation quality (proper-info of IMPUTE or R^2 of MACH > 0.3).

Gene-based testing was conducted with VEGAS software⁶³ on the European ancestry and Asian ancestry meta-analysis results separately. VEGAS incorporates information from the full set of markers within a gene and thus can be more powerful than tests of individual SNPs if there are multiple risk variants within a gene. VEGAS corrects for LD and gene size by conducting simulations based on the LD structure in the population of interest (here, European or Asian ancestry). VEGAS was therefore run separately on all the European and Asian GWAS data, with results for each gene combined at the end by meta-analysis on the two sets of gene-based p values by Fisher's methods. For samples of European descent, we used the HapMap 2 CEU population as the reference to estimate patterns of LD. For Asian ancestry groups, we used the combined HapMap 2 JPT and CHB populations as the reference population to approximate linkage disequilibrium (LD) patterns. To include gene regulatory regions, SNPs were included if they fell within 50 kb of a gene.

VEGAS-Pathway analysis^{63,64} was carried out with prespecified pathways from Gene Ontology. Pathways with 10 to 1,000 components were selected, yielding 4,628 pathways. Pathway analysis was based on combining gene-based test results from VEGAS. Pathway p values were computed by summing χ^2 test statistics derived from VEGAS p values. Empirical VEGAS-Pathway p values for each pathway were computed by comparing the summed χ^2 test statistics from real data with those generated in 500,000 simulations where the relevant number (according to the size of the pathway) of randomly drawn χ^2 test statistics was summed. To ensure that clusters of genes did not adversely affect results, within each pathway, gene sets were pruned such that each gene was >500 kb away from all other genes in the pathway. Where required, all but one of the clustered genes was dropped at random when genes were clustered. We

performed meta-analysis on the two sets of pathway p values by Fisher's method.

Differential Gene Expression in a Mouse Model of Myopia

Animal study approval was obtained from the SingHealth Institutional Animal Care and Use Committee (AAALAC accredited). All procedures performed in this study complied with the Association of Research in Vision and Ophthalmology Statement for the Use of Animals in Ophthalmology and Vision Research. Experimental myopia was induced in B6 wild-type (WT) mice ($n = 36$) by applying a -15.0 diopter spectacle lens on the right eye (experimental eye) for 6 weeks from postnatal day 10. The left uncovered eye served as the contra-lateral control eye. Age-matched naive mice eyes were also used as independent control eyes ($n = 36$).^{65,66} Eye biometry, refraction, tissue collection, RNA extraction, real-time polymerase chain reaction (PCR) qRT-PCR methods, and analysis were followed as described previously.¹⁹ qRT-PCR primers (Table S4) were designed with ProbeFinder 2.45 (Roche Applied Science) and performed with a Lightcycler 480 Probe Master (Roche Applied Science). The experiments were repeated in triplicate. Gene expression of all identified genes in the control and experimental groups was quantified by the $2^{-\Delta\Delta Ct}$ method.⁶⁷ Student's t test was performed to determine the significance of the relative fold difference of mRNA between the myopic eyes of the experimental mice and the age-matched controls.

Gene Expression in Human Tissues

Adult ocular samples were obtained from normal eyes of an 82-year-old female of European ancestry from the North Carolina Eye Bank (Winston-Salem, NC). All adult ocular samples were stored in QIAGEN's RNAlater within 6.5 hr of collection and shipped on dry ice overnight to the lab. Isolated tissues were snap-frozen and stored at -280°C until RNA extraction. RNA was extracted from each tissue sample independently by the Ambion *mirVana* total RNA extraction kit. The tissue samples were homogenized in Ambion lysis buffer with an Omni Bead Ruptor Tissue Homogenizer per protocol. Reverse transcription reactions were performed with Invitrogen SuperScript III First-Strand Synthesis kit. The expression of the identified genes was assessed by running 10 μl reactions with QIAGEN's PCR products consisting of 1.26 μl H₂O, 1.0 μl 10 \times buffer, 1.0 μl dNTPs, 0.3 μl MgCl₂, 2.0 μl Q-Solution, 0.06 μl taq polymerase, 1.0 μl forward primer, 1.0 μl reverse primer, and 1.5.0 μl cDNA. The reactions were run on a Eppendorf Mastercycler Pro S thermocycler with touchdown PCR ramping down 1°C per cycle from 72°C to 55°C followed by 50 cycles of 94°C for 30 s, 55°C for 30 s, and 72°C for 30 s with a final elongation of 7 min at 72°C . All primer sets were designed by Primer3.⁶⁸ Products were run on a 2% agarose gel at 70 V for 35 min. Primer sets were run on a custom tissue panel including Clontech's Human MTC Panel I, Fetal MTC Panel I, and an ocular tissue panel.

Results

We analyzed 2.5 million genotyped and imputed SNPs (Table S2). The genomic control inflation factor (λ) for individual studies (Table S2) as well as for the meta-analysis ($\lambda_{GC} = 1.06$) and quantile-quantile plots (Figure S1) showed little evidence for inflation.

Table 2. Associations with Ocular Axial Length in the European Ancestry Cohorts with Results in the Asian Cohorts and Combined Analysis

Lead SNP ^a	Chr	Position ^b	European Ancestry Cohorts (Stage 1, n = 12,531)			Asian Cohorts (Stage 2, n = 8,216)			Combined (Stage 3, n = 20,747)			Localization Relative to Protein-Coding Genes ^b					
			EA	EAF	Beta ^c	SEM	p Value	EAF	Beta ^c	SEM	p Value		p Value				
rs4074961	1	37865310	T	0.43	0.06	0.01	0.01	6.6 × 10 ⁻⁶	0.45	0.10	0.02	1.1 × 10 ⁻⁹	0.44	0.07	0.01	4.0 × 10 ⁻¹³	intron 4 of <i>RSPO1</i> (MIM 609595)
rs994767	1	217842055	A	0.45	-0.06	0.01	0.01	1.2 × 10 ⁻⁶	0.32	-0.10	0.02	4.4 × 10 ⁻⁷	0.41	-0.07	0.01	9.6 × 10 ⁻¹²	7 kb upstream of <i>ZC3H11B</i>
rs9811920	3	101326983	A	0.41	0.07	0.01	0.01	3.0 × 10 ⁻⁷	0.36	0.13	0.03	6.0 × 10 ⁻⁶	0.40	0.08	0.01	4.9 × 10 ⁻¹¹	intron 1 of <i>C3orf26</i>
rs12193446	6	129861731	A	0.91	0.12	0.02	0.02	1.1 × 10 ⁻⁷	0.98	0.28	0.11	1.2 × 10 ⁻²	0.91	0.12	0.02	1.2 × 10 ⁻⁸	intron 58 of <i>LAMA2</i> (MIM 156225)
rs11073058	15	32776918	T	0.43	0.07	0.01	0.01	2.0 × 10 ⁻⁸	0.50	0.06	0.02	4.7 × 10 ⁻⁴	0.45	0.07	0.01	4.3 × 10 ⁻¹¹	57 kb upstream of <i>GJD2</i> (MIM 607058)
Additional locus identified through the combined analysis of European and Asian cohorts																	
rs12321	22	27783183	C	0.44	-0.05	0.01	0.01	1.1 × 10 ⁻⁵	0.49	-0.06	0.02	9.9 × 10 ⁻⁴	0.46	-0.05	0.01	4.1 × 10 ⁻⁸	3' UTR of <i>ZNRF3</i> (MIM 612062)

SNPs with $p < 1 \times 10^{-5}$ in European ancestry cohorts were brought for replication in Asians. Genome-wide significance is defined as $p < 5.0 \times 10^{-8}$. The following abbreviations are used: SNP, single-nucleotide polymorphism; Chr, chromosome; EA, effect allele; EAF, effect allele frequency; SEM, standard error of the mean.

^aLead SNPs of each locus identified in the combined meta-analysis (stage 3) are presented. The lead SNPs in the European-only analysis (stage 1) for all loci, except for the 1q41 locus near *ZC3H11B*, where the lead SNP in European-only analysis is rs10863469 (position, 217844091; frequency of effect allele T = 0.47; Beta = 0.47; $p = 1.2 \times 10^{-9}$), being in high LD ($r^2 = 0.84$) with rs994767.

^bPosition is based on NCBI human genome build 36.

^cEffect sizes on axial length are in mm.

Per-SNP Meta-analysis

In the first stage, a total of 177 SNPs, representing 24 physically distinct loci, were associated with $p < 1 \times 10^{-5}$ in the European ancestry discovery cohort (Table S5). Of them, we identified one locus at chromosome 15q14 in the proximity of *GJD2* (MIM 607058; rs11073058, $p = 2.0 \times 10^{-8}$) exceeding genome-wide significance level ($p < 5 \times 10^{-8}$; Table 2), which was previously reported to be associated with refractive errors.⁶⁹ We took the 177 SNPs forward for replication in the Asian cohorts (stage 2). Five regions showed significant evidence of replication ($1.12 \times 10^{-9} \leq p \leq 1.18 \times 10^{-2}$; Table 2): *RSPO1* (MIM 609595), *C3orf26*, *LAMA2* (MIM 156225), and regions close to *ZC3H11B* and *GJD2*. In the combined meta-analysis of all 18 European and Asian cohorts (stage 3, $n = 20,747$), all five loci surpassed genome-wide significance level ($3.97 \times 10^{-13} \leq p \leq 1.24 \times 10^{-8}$; Table 2 and Figure 1). Furthermore, in stage 3 we detected an additional genome-wide significant locus at *ZNRF3* (MIM 612062, $p = 4.08 \times 10^{-8}$; Table 2).

Overall, the significant regions included six loci for AL: *RSPO1*, *C3orf26*, *LAMA2*, *GJD2*, *ZNRF3*, and one previously identified locus for AL at 1q41 close to *ZC3H11B*.¹⁹ A common SNP in *RSPO1* displayed the strongest evidence for association (rs4074961, $\beta = 0.07$ mm per copy of risk allele, $p = 3.97 \times 10^{-13}$), with no evidence of heterogeneity ($I^2 = 0\%$, $p = 0.78$) across the 18 AL cohorts (Table S6), although the strongest effect was observed for the rarer intronic variant in *LAMA2* (rs12193446, $\beta = 0.12$ mm, $p = 1.24 \times 10^{-8}$). Figure 2 shows the regional association plots for the six loci significant in single SNP tests. Forest plots showing the effect sizes across cohorts are provided in Figure S2. We constructed a multilocus genetic risk score to evaluate the combined effects of the AL SNPs in the Blue Mountains Eye Study^{24,25} and the Singapore Chinese Eye Study,³⁵ both of which were part of the 18 AL discovery cohorts. Figure S3 shows that the odd ratios for longer AL (Tertile 3 versus Tertile 1) were higher with increasing genetic risk scores.

Gene-Based Meta-analysis

In addition to per-SNP meta-analysis, we applied gene-based tests with VEGAS,²⁵ with genome-wide significance declared if $p_{\text{gene-based}} < 0.05/17,872 = 2.8 \times 10^{-6}$ (17,872 genes tested). Over and above the loci found in per-SNP tests, three additional genomic regions were genome-wide significantly associated with AL via gene-based tests (Table 3): *CD55* (MIM 125240), *ALPPL2* (MIM 171810), and *TIMELESS/MIP/SPRYD4/GLS2* (MIM 603887 for *TIMELESS*). Figure S4 shows the regional association for the three loci significant in gene-based tests.

Association with Refraction

We subsequently assessed the association of these AL SNPs and genes with SE in 23,591 individuals from 18 independent studies in CREAM that had SE but no AL measures (Tables S1 and S3). We found associations ($p < 0.05$) with SE for three of the six AL SNPs (Table 4 and Figure S5)

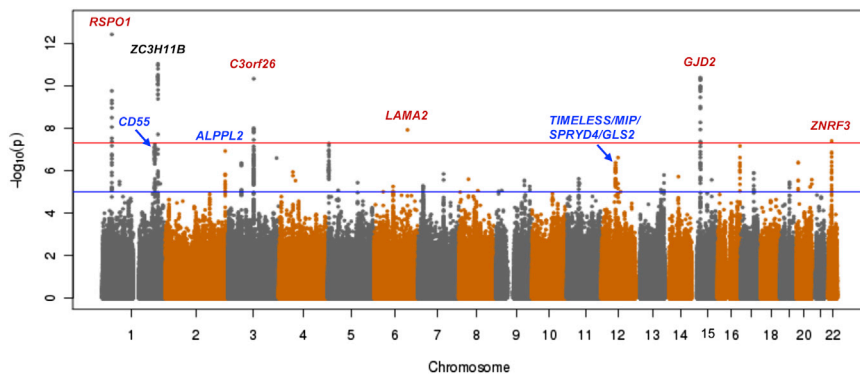


Figure 1. Summary of Meta-analysis Results for Genome-wide Association to Ocular Axial Length

Data of both directly genotyped and imputed SNPs are presented in the Manhattan plot. The y axis represents $-\log_{10}$ p values for association with axial length, and the x axis represents chromosomes and base-pair positions based on human genome build 36. The horizontal red line indicates the genome-wide significance level of $p < 5.0 \times 10^{-8}$. The horizontal blue line indicates the suggestive significance level of $p < 1.0 \times 10^{-5}$. The previously described locus for axial length is labeled in black. Other loci reaching genome-wide significance identified from the per-SNP meta-analysis are labeled in red. The genes identified in gene-based tests are labeled in blue.

(rs994767 [*ZC3H11B*, $p = 0.013$], rs11073058 [*GJD2*, $p = 1.66 \times 10^{-8}$], and rs12193446 [*LAMA2*, $p = 3.58 \times 10^{-10}$]), with directions of the SE association being consistent with AL. For example, the risk allele T of rs11073058 in *GJD2* was associated with both longer AL and more myopia (more negative SE). In gene-based tests, only *CD55* ($p = 4.5 \times 10^{-6}$) and *ALPPL2* ($p = 8.3 \times 10^{-3}$) were associated with SE (Table 5).

SNPs close to *CD55* had reached genome-wide significant association with SE in the meta-analysis of all CREAM cohorts (i.e., with and without AL measures).²⁰ There was an association with SE at *CHRNA2*, along with a less significant independent hit near *ALPPL2* (125 kb away).²⁰ Our AL gene-based results showed a genome-wide significant signal at *ALPPL2* but not at *CHRNA2*. There was also an association with SE at *RDH5*,²⁰ on the same chromosomal band as the AL signal at *MIP* (MIM 154050), but *RDH5* and *MIP* are 727 kb apart without LD between them, suggesting that they are independent signals.

Pathway Analysis

We conducted pathway analysis with VEGAS-Pathway^{63,64} by combining the gene-based p values for 4,628 prespecified pathways. The most significant pathway was the “Wnt receptor signaling” pathway ($p = 2.9 \times 10^{-5}$). The Bonferroni corrected p value was 0.13 (for the total number of 4,628 pathways tested). However, Bonferroni correction is an overcorrection, because many of the pathways have overlapping genes. The identification of the Wnt signaling pathway, even if only nominally associated, is of interest because the pathway involves two genes identified from the per-SNP tests. Also among the top ten pathways were “lens development in camera-type eye” ($p = 2.4 \times 10^{-4}$) and “collagen” ($p = 5.1 \times 10^{-4}$) pathways (Table S7). The collagen pathway was implicated in a recent meta-analysis of corneal thickness.⁶⁴

Gene Expression

Differential expression of the nearest genes in the six implicated loci from per-SNP meta-analysis (Table S4) was

assessed by measuring mRNA levels in minus-lens-induced myopia mouse models.^{65,66} The mRNA levels of all six genes had a 2-fold difference in the induced myopic eyes as compared to the control eyes in most of the tissues tested: sclera, retinal pigment epithelium (RPE), and neural retina (Figure S6).

In human ocular tissue, we have previously shown that *ZC3H11B* is expressed in neural retina, RPE, and sclera,¹⁹ *LAMA2* is expressed in sclera and optic nerve, and *CD55* is expressed in retina, choroid, and cornea, and *GJD2* is less abundant in sclera and other ocular tissues.²⁰ In this study, we measured the mRNA expression levels of the other genes in adult ocular tissues via reverse-transcriptase PCR. We found that *C3orf26*, *ZNRF3*, and *TIMELESS* were expressed in most ocular tissues and the expression of *RSP01*, *ALPPL2*, and *MIP* was less strong and/or more restricted (Table S8).

Discussion

We identified five AL loci (*RSP01*, *C3orf26*, *LAMA2*, *GJD2*, and *ZNRF3*) and confirmed the previously described locus (*ZC3H11B*) via per-SNP tests. In addition, three loci (*CD55*, *ALPPL2*, and *TIMELESS/MIP/SPRYD4/GLS2*) were identified by gene-based tests. Therefore, a total of nine AL loci were identified in this meta-analysis. Seven of the nine AL loci are located within the genomic region of protein-coding genes (Tables 2 and 3). Of note, two of them (*RSP01* and *ZNRF3*) encode proteins that are directly involved in the Wnt signaling pathway. *RSP01* is a member of a family of secreted proteins that act as stem-cell growth factors by enhancing the Wnt signaling pathway.⁷⁰ On the other hand, *ZNRF3* is a membrane-bound protein that acts as a negative regulator of the Wnt signaling pathway by mediating degradation of the Wnt receptor complex components Frizzled and LRP6.⁷¹ The two proteins have recently been shown to interact, *RSP01* enhancing Wnt signaling through inhibition of *ZNRF3*.⁷¹ The Wnt signaling was the most significant pathway in our analysis, further

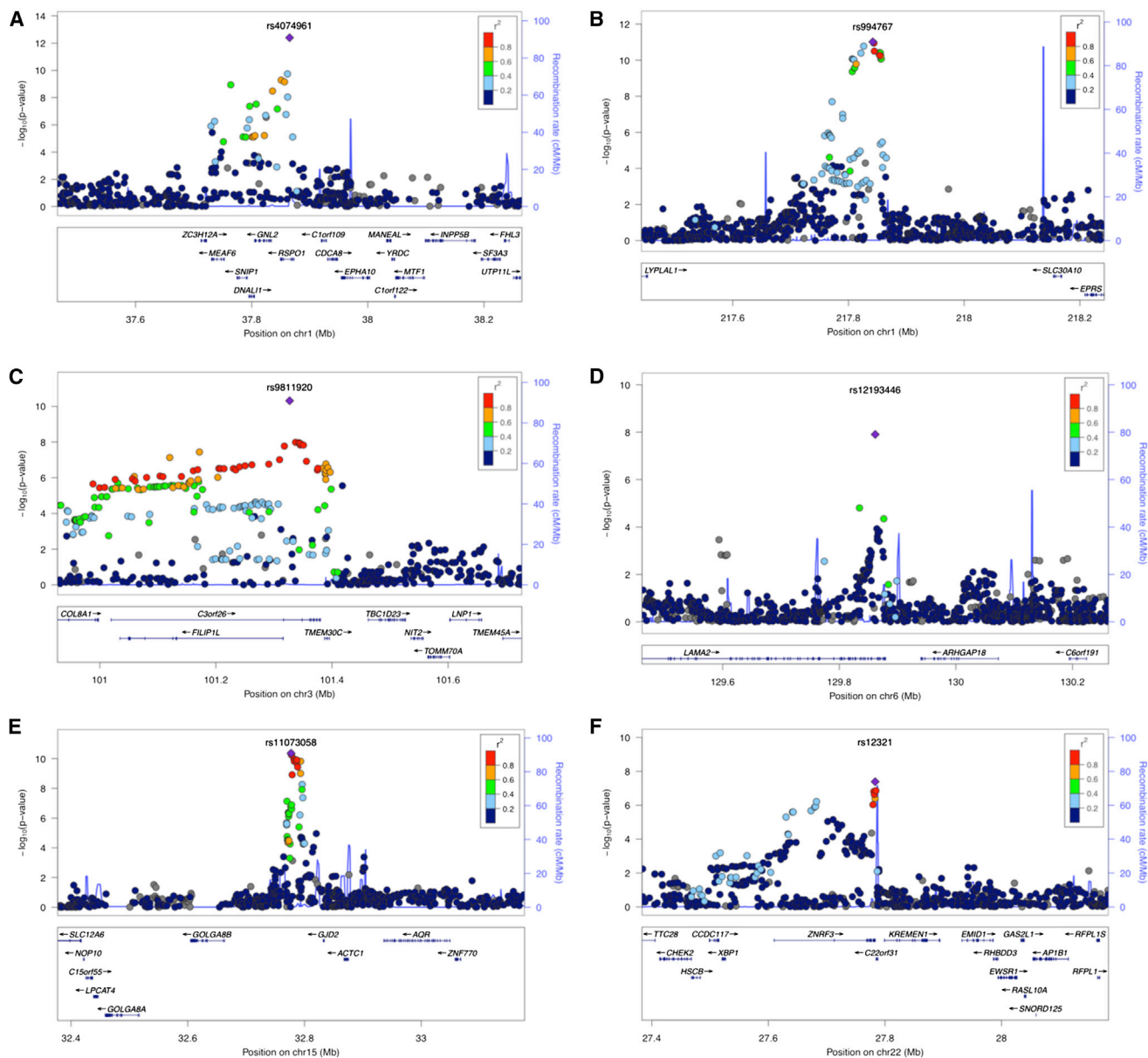


Figure 2. Regional Association Plots and Recombination Rates of the Loci Associated with Ocular Axial Length

Data are shown for association at chromosome (A) 1p34.3 (*RSPO1*), (B) 1q41 (*ZC3H11B*), (C) 3q12.1 (*C3orf26*), (D) 6q22.33 (*LAMA2*), (E) 15q14 (*GJD2*), and (F) 22q12.1 (*ZNR3*) in the combined meta-analysis. Data of both directly genotyped and imputed SNPs are presented. In each panel, the genotyped SNP with the most significant association is denoted with a purple diamond. The color coding of all other SNPs indicates LD with the lead SNP, estimated by CEU r^2 from phase II HapMap: red, $r^2 \geq 0.8$; yellow, $0.6 \leq r^2 < 0.8$; green, $0.4 \leq r^2 < 0.6$; cyan, $0.2 \leq r^2 < 0.4$; blue, $r^2 < 0.2$; and gray, r^2 unknown. The left y axis represents $-\log_{10} p$ values for association with axial length, the right y axis represents the recombination rate, estimated from the International HapMap Project, and the x axis represents base-pair positions along the chromosome based on human genome build 36. Gene annotations are taken from the University of California Santa Cruz (UCSC) genome browser. The plots were created with LocusZoom.

supporting its prominent role in vertebrate eye development.⁷² Indeed, overexpression of a dominant-negative variant of human *ZNR3* in zebrafish embryos induces small eye or loss of eyes.⁷¹

Remodeling of extracellular matrix in sclera plays an important role in changes of eye size during myopia development. *LAMA2* encodes the alpha 2 chain of laminin, a major extracellular protein of the basement membrane. We used HaploReg⁷³ to search for evidence of a functional

role for variants at the *LAMA2* locus, because it has the largest per-allele effect on AL. The intronic lead SNP rs12193446 lies within the promoter and enhancer histone marks as well as DNase hypersensitive sites. Analysis with RegulomeDB⁷⁴ suggested that rs12193446 occurs in a region that binds EP300, TCF4, STAT3, GATA2, and RFX4. Four of these interactions (EP300, TCF4, STAT3, and GATA2) were predicted by HaploReg⁷³ to be affected by the genotype at rs12193446. Mutations in the cognate

Table 3. Loci Associated with Ocular Axial Length in Gene-Based Tests

Gene	MIM Number	Chr	Start Position ^a	End Position ^a	P _{gene-based} Value		
					European Ancestry Cohorts	Asian Cohorts	Combined ^b
<i>CD55</i>	125240	1	205561439	205600934	1.3×10^{-5}	9.6×10^{-4}	2.3×10^{-7}
<i>ALPPL2</i>	171810	2	232979795	232983669	6.4×10^{-5}	1.7×10^{-3}	1.8×10^{-6}
<i>TIMELESS/MIP/SPRYD4/GLS2^c</i>	603887	12	55097173	55168448	2.0×10^{-7}	7.3×10^{-2}	2.8×10^{-7}

The following abbreviation is used: Chr, chromosome.

^aPosition is based on NCBI human genome build 36. Note this is the start and stop position of the gene. For gene-based tests, 50 kb was added to either side to account for possible regulatory variants that fall outside the gene boundaries.

^bGene-based genome-wide significance was defined as $p < 2.80 \times 10^{-6}$. Only loci that were genome-wide significant in gene-based testing but not genome-wide significant in per-SNP testing are shown.

^c*TIMELESS* was the most significant gene in the region. Because of the ± 50 kb added to the definition for each gene and the close proximity of the genes, *MIP*, *SPRYD4*, *GLS2*, and *TIMELESS* all had similar gene-based p values (ranged from 1.4×10^{-6} to 2.8×10^{-7} for the combined analysis), and thus p value and MIM number for only *TIMELESS* is presented.

gene for *TCF4* cause Pitt-Hopkins syndrome (PTHS [MIM 610954]), the predominant ocular feature of which is high-grade myopia.⁷⁵ Interestingly, common genetic variants in *TCF4* (MIM 602272) have also been associated with Fuchs corneal dystrophy, suggesting the pleiotropic effects of *TCF4* on ocular diseases.⁷⁶

Gene-based testing implicated the *TIMELESS/MIP/SPRYD4/GLS2* region, although determining which of these genes are functionally relevant is difficult because there are multiple association signals in the region. *MIP* is an interesting candidate gene because it is expressed in the ocular lens and is required for correct lens function.⁷⁷ *CD55*, implicated here in AL and previously in SE,²⁰ is known to elevate cytosolic calcium ion concentration.

For all six of the genes identified in our per-SNP meta-analysis, we found evidence for differential expression in a mouse model of myopia. Differential expression was observed in the mouse sclera and retina as well as RPE cells, suggesting a role for these genes in myopia. Further strengthening our results, the expression data showed that all but one of these genes expressed in the

adult human eye. These data potentially provide insights into the complexity of AL elongation and myopia at the biological level. Some genes, namely *ZC3H11A*, *GJD2*, and *LAMA2*, showed changes in expression that are consistently in the same direction across the different eye sections analyzed, whereas others, namely *RSPO1*, *C3orf26*, and *ZNRF3*, showed variable directions of differential expression. These results, together with the pathway analysis results, suggest that the genetic mechanisms of myopia are complex, involving more than one eye component.

We have previously shown that up to 50% of the variation in SE is due to shared genetic factors with AL.⁷⁸ Thus, we undertook further analyses and found that five of the nine AL loci are also associated with SE. Furthermore, we looked up the association of AL with the SNPs discovered from the recent CREAM GWAS meta-analysis on SE in 32 cohorts²⁰ and observed that 23 of the 29 SNPs identified with SE have significant effects on AL ($p < 0.05$; Table S9). This has important implications. First, it confirms the previous findings in twins⁷⁸ that there are common genetic determinants of the two traits, such as variants in *GJD2*, *LAMA2*, *CD55*, and *ALPPL2*. Second, it indicates that some genetic variants for AL do not influence SE, suggesting that they regulate the coordinated scaling of eye size.⁷⁹ For example, the SNP in *RSPO1* showed the strongest evidence of association with AL, yet it had no association with refractive error. In eyes without refractive error, AL and corneal curvature are carefully scaled relative to one another and have a high phenotypic correlation between them.⁸⁰ Therefore, genes like *RSPO1* might mediate a compensatory mechanism through changes in corneal curvature or optical power, thereby balancing their effects on SE.

Shorter axial length is a major risk factor for angle closure glaucoma. A recent GWAS on primary angle closure glaucoma identified three genome-wide significant loci located at *PLEKHA7* (MIM 612686), *COL11A1* (MIM 120280), and *PCMTD1-ST18*.⁸¹ However, none of the common variants in the three loci were significantly associated with AL in our meta-analysis (Table S10). This suggests that

Table 4. Association with Spherical Equivalent of the SNPs Most Strongly Associated with Axial Length in Each Genomic Locus in Independent Cohorts

Lead SNP	Nearest Gene	Effect Allele	Beta ^a	SEM	p Value
rs994767	<i>ZC3H11B</i>	A	0.054	0.022	1.3×10^{-2}
rs9811920	<i>C3orf26</i>	A	-0.022	0.022	0.31
rs12193446	<i>LAMA2</i> (MIM 156225)	A	-0.242	0.039	3.6×10^{-10}
rs11073058	<i>GJD2</i> (MIM 607058)	T	-0.121	0.022	1.7×10^{-8}
rs12321	<i>ZNRF3</i> (MIM 612062)	C	-0.004	0.021	0.86

Abbreviations are as follows: SNP, single-nucleotide polymorphism; SEM, standard error of the mean.

^aEffect sizes on spherical equivalent are in diopters.

Table 5. Association of the Axial Length Genes Identified in Gene-Based Tests with Spherical Equivalent in Independent Cohorts

Gene	MIM Number	Chr	$p_{\text{gene-based}}$ Value ^a
<i>CD55</i>	125240	1	4.5×10^{-6}
<i>ALPPL2</i>	171810	2	8.3×10^{-3}
<i>TIMELESS/MIP/SPRYD4/GLS2</i> ^b	603887	12	0.14

Abbreviation is as follows: Chr, chromosome.

^aThe association with spherical equivalent was assessed in 17 European ancestry cohorts of the 18 independent cohorts, with the HapMap 2 CEU population as the reference to estimate patterns of LD.

^bBecause of the ± 50 kb added to the definition for each gene and the close proximity of the genes, *MIP*, *SPRYD4*, *GLS2*, and *TIMELESS* all had similar gene-based *p* values (ranged from 0.14 to 0.20 for the combined analysis), and thus *p* value and MIM number for *TIMELESS* only is presented.

susceptibility genes do not overlap between primary angle closure glaucoma and eyes with shorter axial length.

In summary, we identified nine loci associated with AL. They fall into two groups, one also influencing common refractive error variation, and the other, which includes two genes in the Wnt signaling pathway, uniquely determining eye size with little effect on natural refractive status. Further elucidation and characterization of the causal variants underlying the growth of ocular component dimensions and the development of myopia may enable new pathway and target identification, leading to potential prevention and treatment development.

Supplemental Data

Supplemental Data include six figures, ten tables, and Supplemental Acknowledgments and can be found with this article online at <http://www.cell.com/AJHG/>.

Acknowledgments

The authors thank the staff and participants of all studies for their important contributions. Complete funding information and acknowledgements are provided in the Supplemental Data. ALSPAC thanks 23andMe for funding the generation of the ALSPAC GWA data.

Received: March 15, 2013

Revised: April 17, 2013

Accepted: June 12, 2013

Published: August 8, 2013

Web Resources

The URLs for data presented herein are as follows:

HaploReg, <http://www.broadinstitute.org/mammals/haploreg/haploreg.php>

IMPUTE2, http://mathgen.stats.ox.ac.uk/impute/impute_v2.html

International HapMap Project, <http://hapmap.ncbi.nlm.nih.gov/>

LocusZoom, <http://csg.sph.umich.edu/locuszoom/>

MACH, <http://www.sph.umich.edu/csg/abecasis/MACH/>

METAL, <http://www.sph.umich.edu/csg/abecasis/metal/>

Online Mendelian Inheritance in Man (OMIM), <http://www.omim.org/>

RegulomeDB, <http://RegulomeDB.org/>

UCSC Genome Browser, <http://genome.ucsc.edu>

VEGAS, <http://gump.qimr.edu.au/VEGAS/>

References

- Lin, L.L., Shih, Y.F., Hsiao, C.K., and Chen, C.J. (2004). Prevalence of myopia in Taiwanese schoolchildren: 1983 to 2000. *Ann. Acad. Med. Singapore* 33, 27–33.
- Guo, Y.H., Lin, H.Y., Lin, L.L., and Cheng, C.Y. (2012). Self-reported myopia in Taiwan: 2005 Taiwan National Health Interview Survey. *Eye (Lond.)* 26, 684–689.
- Pascolini, D., and Mariotti, S.P. (2012). Global estimates of visual impairment: 2010. *Br. J. Ophthalmol.* 96, 614–618.
- Hsu, W.M., Cheng, C.Y., Liu, J.H., Tsai, S.Y., and Chou, P. (2004). Prevalence and causes of visual impairment in an elderly Chinese population in Taiwan: the Shihpai Eye Study. *Ophthalmology* 111, 62–69.
- Zheng, Y., Lavanya, R., Wu, R., Wong, W.L., Wang, J.J., Mitchell, P., Cheung, N., Cajucom-Uy, H., Lamoureux, E., Aung, T., et al. (2011). Prevalence and causes of visual impairment and blindness in an urban Indian population: the Singapore Indian Eye Study. *Ophthalmology* 118, 1798–1804.
- Wong, T.Y., Chong, E.W., Wong, W.L., Rosman, M., Aung, T., Loo, J.L., Shen, S., Loon, S.C., Tan, D.T., Tai, E.S., and Saw, S.M.; Singapore Malay Eye Study Team. (2008). Prevalence and causes of low vision and blindness in an urban malay population: the Singapore Malay Eye Study. *Arch. Ophthalmol.* 126, 1091–1099.
- Saw, S.M., Gazzard, G., Shih-Yen, E.C., and Chua, W.H. (2005). Myopia and associated pathological complications. *Ophthalmic Physiol. Opt.* 25, 381–391.
- Javitt, J.C., and Chiang, Y.P. (1994). The socioeconomic aspects of laser refractive surgery. *Arch. Ophthalmol.* 112, 1526–1530.
- Vitale, S., Cotch, M.F., Sperduto, R., and Ellwein, L. (2006). Costs of refractive correction of distance vision impairment in the United States, 1999–2002. *Ophthalmology* 113, 2163–2170.
- Shufelt, C., Fraser-Bell, S., Ying-Lai, M., Torres, M., and Varma, R.; Los Angeles Latino Eye Study Group. (2005). Refractive error, ocular biometry, and lens opalescence in an adult population: the Los Angeles Latino Eye Study. *Invest. Ophthalmol. Vis. Sci.* 46, 4450–4460.
- Pan, C.W., Wong, T.Y., Chang, L., Lin, X.Y., Lavanya, R., Zheng, Y.F., Kok, Y.O., Wu, R.Y., Aung, T., and Saw, S.M. (2011). Ocular biometry in an urban Indian population: the Singapore Indian Eye Study (SINDI). *Invest. Ophthalmol. Vis. Sci.* 52, 6636–6642.
- Ip, J.M., Huynh, S.C., Kifley, A., Rose, K.A., Morgan, I.G., Varma, R., and Mitchell, P. (2007). Variation of the contribution from axial length and other oculo-metric parameters to refraction by age and ethnicity. *Invest. Ophthalmol. Vis. Sci.* 48, 4846–4853.
- Lim, L.S., Yang, X., Gazzard, G., Lin, X., Sng, C., Saw, S.M., and Qiu, A. (2011). Variations in eye volume, surface area, and shape with refractive error in young children by magnetic resonance imaging analysis. *Invest. Ophthalmol. Vis. Sci.* 52, 8878–8883.
- Hsiang, H.W., Ohno-Matsui, K., Shimada, N., Hayashi, K., Moriyama, M., Yoshida, T., Tokoro, T., and Mochizuki, M. (2008). Clinical characteristics of posterior staphyloma in

- eyes with pathologic myopia. *Am. J. Ophthalmol.* *146*, 102–110.
15. Sanfilippo, P.G., Hewitt, A.W., Hammond, C.J., and Mackey, D.A. (2010). The heritability of ocular traits. *Surv. Ophthalmol.* *55*, 561–583.
 16. Lyhne, N., Sjølie, A.K., Kyvik, K.O., and Green, A. (2001). The importance of genes and environment for ocular refraction and its determiners: a population based study among 20-45 year old twins. *Br. J. Ophthalmol.* *85*, 1470–1476.
 17. Chen, C.Y., Scurrah, K.J., Stankovich, J., Garoufalis, P., Dirani, M., Pertile, K.K., Richardson, A.J., Mitchell, P., and Baird, P.N. (2007). Heritability and shared environment estimates for myopia and associated ocular biometric traits: the Genes in Myopia (GEM) family study. *Hum. Genet.* *121*, 511–520.
 18. Klein, A.P., Suktitipat, B., Duggal, P., Lee, K.E., Klein, R., Bailey-Wilson, J.E., and Klein, B.E. (2009). Heritability analysis of spherical equivalent, axial length, corneal curvature, and anterior chamber depth in the Beaver Dam Eye Study. *Arch. Ophthalmol.* *127*, 649–655.
 19. Fan, Q., Barathi, V.A., Cheng, C.Y., Zhou, X., Meguro, A., Nakata, I., Khor, C.C., Goh, L.K., Li, Y.J., Lim, W., et al. (2012). Genetic variants on chromosome 1q41 influence ocular axial length and high myopia. *PLoS Genet.* *8*, e1002753.
 20. Verhoeven, V.J., Hysi, P.G., Wojciechowski, R., Fan, Q., Guggenheim, J.A., Höhn, R., MacGregor, S., Hewitt, A.W., Nag, A., Cheng, C.Y., et al.; Consortium for Refractive Error and Myopia (CREAM); Diabetes Control and Complications Trial/Epidemiology of Diabetes Interventions and Complications (DCCT/EDIC) Research Group; Wellcome Trust Case Control Consortium 2 (WTCCC2); Fuchs' Genetics Multi-Center Study Group. (2013). Genome-wide meta-analyses of multiethnic cohorts identify multiple new susceptibility loci for refractive error and myopia. *Nat. Genet.* *45*, 314–318.
 21. Verhoeven, V.J., Hysi, P.G., Saw, S.M., Vitart, V., Mirshahi, A., Guggenheim, J.A., Cotch, M.F., Yamashiro, K., Baird, P.N., Mackey, D.A., et al. (2012). Large scale international replication and meta-analysis study confirms association of the 15q14 locus with myopia. The CREAM consortium. *Hum. Genet.* *131*, 1467–1480.
 22. Boyd, A., Golding, J., Macleod, J., Lawlor, D.A., Fraser, A., Henderson, J., Molloy, L., Ness, A., Ring, S., and Davey Smith, G. (2013). Cohort Profile: the 'children of the 90s'—the index offspring of the Avon Longitudinal Study of Parents and Children. *Int. J. Epidemiol.* *42*, 111–127.
 23. Mackey, D.A., Mackinnon, J.R., Brown, S.A., Kearns, L.S., Ruddle, J.B., Sanfilippo, P.G., Sun, C., Hammond, C.J., Young, T.L., Martin, N.G., and Hewitt, A.W. (2009). Twins eye study in Tasmania (TEST): rationale and methodology to recruit and examine twins. *Twin Res. Hum. Genet.* *12*, 441–454.
 24. Mitchell, P., Smith, W., Attebo, K., and Wang, J.J. (1995). Prevalence of age-related maculopathy in Australia. The Blue Mountains Eye Study. *Ophthalmology* *102*, 1450–1460.
 25. Foran, S., Wang, J.J., and Mitchell, P. (2003). Causes of visual impairment in two older population cross-sections: the Blue Mountains Eye Study. *Ophthalmic Epidemiol.* *10*, 215–225.
 26. Vitart, V., Bencić, G., Hayward, C., Herman, J.S., Huffman, J., Campbell, S., Bućan, K., Zgaga, L., Kolčić, I., Polasek, O., et al. (2010). Heritabilities of ocular biometrical traits in two croatian isolates with extended pedigrees. *Invest. Ophthalmol. Vis. Sci.* *51*, 737–743.
 27. Aulchenko, Y.S., Heutink, P., Mackay, I., Bertoli-Avella, A.M., Pullen, J., Vaessen, N., Rademaker, T.A., Sandkuijl, L.A., Cardon, L., Oostra, B., and van Duijn, C.M. (2004). Linkage disequilibrium in young genetically isolated Dutch population. *Eur. J. Hum. Genet.* *12*, 527–534.
 28. Pardo, L.M., MacKay, I., Oostra, B., van Duijn, C.M., and Aulchenko, Y.S. (2005). The effect of genetic drift in a young genetically isolated population. *Ann. Hum. Genet.* *69*, 288–295.
 29. Hofman, A., van Duijn, C.M., Franco, O.H., Ikram, M.A., Janssen, H.L., Klaver, C.C., Kuipers, E.J., Nijsten, T.E., Stricker, B.H., Tiemeier, H., et al. (2011). The Rotterdam Study: 2012 objectives and design update. *Eur. J. Epidemiol.* *26*, 657–686.
 30. Vitart, V., Bencić, G., Hayward, C., Skunca Herman, J., Huffman, J., Campbell, S., Bućan, K., Navarro, P., Gunjaca, G., Marin, J., et al. (2010). New loci associated with central cornea thickness include COL5A1, AKAP13 and AVGR8. *Hum. Mol. Genet.* *19*, 4304–4311.
 31. Evans, S., Newnham, J., MacDonald, W., and Hall, C. (1996). Characterisation of the possible effect on birthweight following frequent prenatal ultrasound examinations. *Early Hum. Dev.* *45*, 203–214.
 32. Newnham, J.P., Evans, S.F., Michael, C.A., Stanley, F.J., and Landau, L.I. (1993). Effects of frequent ultrasound during pregnancy: a randomised controlled trial. *Lancet* *342*, 887–891.
 33. Williams, L.A., Evans, S.F., and Newnham, J.P. (1997). Prospective cohort study of factors influencing the relative weights of the placenta and the newborn infant. *BMJ* *314*, 1864–1868.
 34. Xu, L., Li, J., Cui, T., Hu, A., Fan, G., Zhang, R., Yang, H., Sun, B., and Jonas, J.B. (2005). Refractive error in urban and rural adult Chinese in Beijing. *Ophthalmology* *112*, 1676–1683.
 35. Lavanya, R., Jeganathan, V.S., Zheng, Y., Raju, P., Cheung, N., Tai, E.S., Wang, J.J., Lamoureux, E., Mitchell, P., Young, T.L., et al. (2009). Methodology of the Singapore Indian Chinese Cohort (SICC) eye study: quantifying ethnic variations in the epidemiology of eye diseases in Asians. *Ophthalmic Epidemiol.* *16*, 325–336.
 36. Saw, S.M., Tong, L., Chua, W.H., Chia, K.S., Koh, D., Tan, D.T., and Katz, J. (2005). Incidence and progression of myopia in Singaporean school children. *Invest. Ophthalmol. Vis. Sci.* *46*, 51–57.
 37. Foong, A.W., Saw, S.M., Loo, J.L., Shen, S., Loon, S.C., Rosman, M., Aung, T., Tan, D.T., Tai, E.S., and Wong, T.Y. (2007). Rationale and methodology for a population-based study of eye diseases in Malay people: The Singapore Malay eye study (SiMES). *Ophthalmic Epidemiol.* *14*, 25–35.
 38. Dirani, M., Chan, Y.H., Gazzard, G., Hornbeak, D.M., Leo, S.W., Selvaraj, P., Zhou, B., Young, T.L., Mitchell, P., Varma, R., et al. (2010). Prevalence of refractive error in Singaporean Chinese children: the strabismus, amblyopia, and refractive error in young Singaporean Children (STARS) study. *Invest. Ophthalmol. Vis. Sci.* *51*, 1348–1355.
 39. Rahi, J.S., Cumberland, P.M., and Peckham, C.S. (2011). Myopia over the lifecourse: prevalence and early life influences in the 1958 British birth cohort. *Ophthalmology* *118*, 797–804.
 40. Fraser, A., Macdonald-Wallis, C., Tilling, K., Boyd, A., Golding, J., Davey Smith, G., Henderson, J., Macleod, J., Molloy, L., Ness, A., et al. (2013). Cohort Profile: the Avon Longitudinal Study of Parents and Children: ALSPAC mothers cohort. *Int. J. Epidemiol.* *42*, 97–110.
 41. Burdon, K.P., Macgregor, S., Hewitt, A.W., Sharma, S., Chidlow, G., Mills, R.A., Danoy, P., Casson, R., Viswanathan,

- A.C., Liu, J.Z., et al. (2011). Genome-wide association study identifies susceptibility loci for open angle glaucoma at TMCO1 and CDKN2B-AS1. *Nat. Genet.* 43, 574–578.
42. The Diabetes Control and Complications Trial Research Group. (1993). The effect of intensive treatment of diabetes on the development and progression of long-term complications in insulin-dependent diabetes mellitus. *N. Engl. J. Med.* 329, 977–986.
 43. Nelis, M., Esko, T., Mägi, R., Zimprich, F., Zimprich, A., Toncheva, D., Karachanak, S., Piskácková, T., Balasćák, I., Peltonen, L., et al. (2009). Genetic structure of Europeans: a view from the North-East. *PLoS ONE* 4, e5472.
 44. Louttit, M.D., Kopplin, L.J., Igo, R.P., Jr., Fondran, J.R., Tagliaferri, A., Bardenstein, D., Aldave, A.J., Croasdale, C.R., Price, M.O., Rosenwasser, G.O., et al.; FECD Genetics Multi-Center Study Group. (2012). A multicenter study to map genes for Fuchs endothelial corneal dystrophy: baseline characteristics and heritability. *Cornea* 31, 26–35.
 45. Leibowitz, H.M., Krueger, D.E., Maunder, L.R., Milton, R.C., Kini, M.M., Kahn, H.A., Nickerson, R.J., Pool, J., Colton, T.L., Ganley, J.P., et al. (1980). The Framingham Eye Study monograph: An ophthalmological and epidemiological study of cataract, glaucoma, diabetic retinopathy, macular degeneration, and visual acuity in a general population of 2631 adults, 1973–1975. *Surv. Ophthalmol. Suppl.* 24, 335–610.
 46. Pärssinen, O., Jauhonen, H.M., Kauppinen, M., Kaprio, J., Koskenvuo, M., and Rantanen, T. (2010). Heritability of spherical equivalent: a population-based twin study among 63- to 76-year-old female twins. *Ophthalmology* 117, 1908–1911.
 47. Wichmann, H.E., Gieger, C., and Illig, T.; MONICA/KORA Study Group. (2005). KORA-gen—resource for population genetics, controls and a broad spectrum of disease phenotypes. *Gesundheitswesen* 67 (Suppl 1), S26–S30.
 48. Holle, R., Happich, M., Löwel, H., and Wichmann, H.E.; MONICA/KORA Study Group. (2005). KORA—a research platform for population based health research. *Gesundheitswesen* 67 (Suppl 1), S19–S25.
 49. Oexle, K., Ried, J.S., Hicks, A.A., Tanaka, T., Hayward, C., Bruegel, M., Gögele, M., Lichtner, P., Müller-Myhsok, B., Döring, A., et al. (2011). Novel association to the proprotein convertase PCSK7 gene locus revealed by analysing soluble transferrin receptor (sTfR) levels. *Hum. Mol. Genet.* 20, 1042–1047.
 50. Steffens, M., Lamina, C., Illig, T., Bettecken, T., Vogler, R., Entz, P., Suk, E.K., Toliat, M.R., Klopp, N., Caliebe, A., et al. (2006). SNP-based analysis of genetic substructure in the German population. *Hum. Hered.* 62, 20–29.
 51. Biino, G., Palmas, M.A., Corona, C., Prodi, D., Fanciulli, M., Sulis, R., Serra, A., Fossarello, M., and Pirastu, M. (2005). Ocular refraction: heritability and genome-wide search for eye morphometry traits in an isolated Sardinian population. *Hum. Genet.* 116, 152–159.
 52. Sim, X., Ong, R.T., Suo, C., Tay, W.T., Liu, J., Ng, D.P., Boehnke, M., Chia, K.S., Wong, T.Y., Seielstad, M., et al. (2011). Transferability of type 2 diabetes implicated loci in multi-ethnic cohorts from Southeast Asia. *PLoS Genet.* 7, e1001363.
 53. Spector, T.D., and Williams, F.M. (2006). The UK Adult Twin Registry (TwinsUK). *Twin Res. Hum. Genet.* 9, 899–906.
 54. Klein, R., Lee, K.E., Gangnon, R.E., and Klein, B.E. (2010). The 25-year incidence of visual impairment in type 1 diabetes mellitus the wisconsin epidemiologic study of diabetic retinopathy. *Ophthalmology* 117, 63–70.
 55. Raitakari, O.T., Juonala, M., Rönnemaa, T., Keltikangas-Järvinen, L., Räsänen, L., Pietikäinen, M., Hutri-Kähönen, N., Taittonen, L., Jokinen, E., Marniemi, J., et al. (2008). Cohort profile: the cardiovascular risk in Young Finns Study. *Int. J. Epidemiol.* 37, 1220–1226.
 56. Marchini, J., Howie, B., Myers, S., McVean, G., and Donnelly, P. (2007). A new multipoint method for genome-wide association studies by imputation of genotypes. *Nat. Genet.* 39, 906–913.
 57. Howie, B.N., Donnelly, P., and Marchini, J. (2009). A flexible and accurate genotype imputation method for the next generation of genome-wide association studies. *PLoS Genet.* 5, e1000529.
 58. Li, Y., Willer, C.J., Ding, J., Scheet, P., and Abecasis, G.R. (2010). MaCH: using sequence and genotype data to estimate haplotypes and unobserved genotypes. *Genet. Epidemiol.* 34, 816–834.
 59. Saw, S.M., Chua, W.H., Hong, C.Y., Wu, H.M., Chia, K.S., Stone, R.A., and Tan, D. (2002). Height and its relationship to refraction and biometry parameters in Singapore Chinese children. *Invest. Ophthalmol. Vis. Sci.* 43, 1408–1413.
 60. Wong, T.Y., Foster, P.J., Johnson, G.J., Klein, B.E., and Seah, S.K. (2001). The relationship between ocular dimensions and refraction with adult stature: the Tanjong Pagar Survey. *Invest. Ophthalmol. Vis. Sci.* 42, 1237–1242.
 61. Stephens, M., and Balding, D.J. (2009). Bayesian statistical methods for genetic association studies. *Nat. Rev. Genet.* 10, 681–690.
 62. Higgins, J.P., Thompson, S.G., Deeks, J.J., and Altman, D.G. (2003). Measuring inconsistency in meta-analyses. *BMJ* 327, 557–560.
 63. Liu, J.Z., McRae, A.F., Nyholt, D.R., Medland, S.E., Wray, N.R., Brown, K.M., Hayward, N.K., Montgomery, G.W., Visscher, P.M., Martin, N.G., and Macgregor, S.; AMFS Investigators. (2010). A versatile gene-based test for genome-wide association studies. *Am. J. Hum. Genet.* 87, 139–145.
 64. Lu, Y., Vitart, V., Burdon, K.P., Khor, C.C., Bykhovskaya, Y., Mirshahi, A., Hewitt, A.W., Koehn, D., Hysi, P.G., Ramdas, W.D., et al.; NEIGHBOR Consortium. (2013). Genome-wide association analyses identify multiple loci associated with central corneal thickness and keratoconus. *Nat. Genet.* 45, 155–163.
 65. Barathi, V.A., Boopathi, V.G., Yap, E.P., and Beuerman, R.W. (2008). Two models of experimental myopia in the mouse. *Vision Res.* 48, 904–916.
 66. Barathi, V.A., Beuerman, R.W., and Schaeffel, F. (2009). Effects of unilateral topical atropine on binocular pupil responses and eye growth in mice. *Vision Res.* 49, 383–387.
 67. Brink, N., Szamel, M., Young, A.R., Wittern, K.P., and Bergemann, J. (2000). Comparative quantification of IL-1beta, IL-10, IL-10r, TNFalpha and IL-7 mRNA levels in UV-irradiated human skin in vivo. *Inflamm. Res.* 49, 290–296.
 68. Rozen, S., and Skaletsky, H. (2000). Primer3 on the WWW for general users and for biologist programmers. *Methods Mol. Biol.* 132, 365–386.
 69. Solouki, A.M., Verhoeven, V.J., van Duijn, C.M., Verkerk, A.J., Ikram, M.K., Hysi, P.G., Despriet, D.D., van Koolwijk, L.M., Ho, L., Ramdas, W.D., et al. (2010). A genome-wide association study identifies a susceptibility locus for refractive errors and myopia at 15q14. *Nat. Genet.* 42, 897–901.
 70. Kim, K.A., Wagle, M., Tran, K., Zhan, X., Dixon, M.A., Liu, S., Gros, D., Korver, W., Yonkovich, S., Tomasevic, N., et al.

- (2008). R-Spondin family members regulate the Wnt pathway by a common mechanism. *Mol. Biol. Cell* 19, 2588–2596.
71. Hao, H.X., Xie, Y., Zhang, Y., Charlat, O., Oster, E., Avello, M., Lei, H., Mickanin, C., Liu, D., Ruffner, H., et al. (2012). ZNRF3 promotes Wnt receptor turnover in an R-spondin-sensitive manner. *Nature* 485, 195–200.
 72. Fuhrmann, S. (2008). Wnt signaling in eye organogenesis. *Organogenesis* 4, 60–67.
 73. Ward, L.D., and Kellis, M. (2012). HaploReg: a resource for exploring chromatin states, conservation, and regulatory motif alterations within sets of genetically linked variants. *Nucleic Acids Res.* 40 (Database issue), D930–D934.
 74. Boyle, A.P., Hong, E.L., Hariharan, M., Cheng, Y., Schaub, M.A., Kasowski, M., Karczewski, K.J., Park, J., Hitz, B.C., Weng, S., et al. (2012). Annotation of functional variation in personal genomes using RegulomeDB. *Genome Res.* 22, 1790–1797.
 75. Brockschmidt, A., Todt, U., Ryu, S., Hoischen, A., Landwehr, C., Birnbaum, S., Frenck, W., Radlwimmer, B., Lichter, P., Engels, H., et al. (2007). Severe mental retardation with breathing abnormalities (Pitt-Hopkins syndrome) is caused by haploinsufficiency of the neuronal bHLH transcription factor TCF4. *Hum. Mol. Genet.* 16, 1488–1494.
 76. Baratz, K.H., Tosakulwong, N., Ryu, E., Brown, W.L., Branham, K., Chen, W., Tran, K.D., Schmid-Kubista, K.E., Heckenlively, J.R., Swaroop, A., et al. (2010). E2-2 protein and Fuchs's corneal dystrophy. *N. Engl. J. Med.* 363, 1016–1024.
 77. Shiels, A., Bassnett, S., Varadaraj, K., Mathias, R., Al-Ghoul, K., Kuszak, J., Donoviel, D., Lilleberg, S., Friedrich, G., and Zambrowicz, B. (2001). Optical dysfunction of the crystalline lens in aquaporin-0-deficient mice. *Physiol. Genomics* 7, 179–186.
 78. Dirani, M., Shekar, S.N., and Baird, P.N. (2008). Evidence of shared genes in refraction and axial length: the Genes in Myopia (GEM) twin study. *Invest. Ophthalmol. Vis. Sci.* 49, 4336–4339.
 79. Guggenheim, J.A., Zhou, X., Evans, D.M., Timpson, N.J., McMahon, G., Kemp, J.P., St Pourcain, B., Northstone, K., Ring, S.M., Fan, Q., et al. (2013). Coordinated genetic scaling of the human eye: shared determination of axial eye length and corneal curvature. *Invest. Ophthalmol. Vis. Sci.* 54, 1715–1721.
 80. Guggenheim, J.A., McMahon, G., Kemp, J.P., Akhtar, S., St Pourcain, B., Northstone, K., Ring, S.M., Evans, D.M., Smith, G.D., Timpson, N.J., and Williams, C. (2013). A genome-wide association study for corneal curvature identifies the platelet-derived growth factor receptor alpha gene as a quantitative trait locus for eye size in white Europeans. *Mol. Vis.* 19, 243–253.
 81. Vithana, E.N., Khor, C.C., Qiao, C., Nongpiur, M.E., George, R., Chen, L.J., Do, T., Abu-Amero, K., Huang, C.K., Low, S., et al. (2012). Genome-wide association analyses identify three new susceptibility loci for primary angle closure glaucoma. *Nat. Genet.* 44, 1142–1146.

Consortia

Consortium for Refractive Error And Myopia (CREAM): 1958 British Birth Cohort: Jugnoo S. Rahi, Pirro G. Hysi; Aichi cohort: Nagahisa Yoshimura, Kenji Yamashiro, Masahiro Miyake; ALIENOR: Cécile Delcourt,

Cecilia Maubaret; ALSPAC: Cathy Williams, Jeremy A. Guggenheim, Kate Northstone, Susan M. Ring, George Davey-Smith; ANZRAG: Jamie E. Craig, Kathryn P. Burdon, Rhys D. Fogarty; AREDS1a: Sudha K. Iyengar, Robert P. Igo, Jr., Emily Chew, Sarayut Janmahasathian; AREDS1b: Sudha K. Iyengar, Robert P. Igo, Jr., Emily Chew, Sarayut Janmahasathian; AREDS1c: Dwight Stambolian, Joan E. Bailey Wilson; BATS: Stuart MacGregor, Yi Lu; Beijing Eye Study: Jost B. Jonas, Liang Xu, Seang-Mei Saw; BMES: Paul N. Baird, Elena Rochtchina, Paul Mitchell, Jie Jin Wang; CIEMS: Jost B. Jonas, Vinay Nangia; CROATIA-Korčula: Caroline Hayward, Alan F. Wright, Veronique Vitart; CROATIA-Split: Ozren Polasek, Harry Campbell, Veronique Vitart; CROATIA-Vis: Igor Rudan, Zoran Vataavuk, Veronique Vitart; DCCT: Andrew D. Paterson, S. Mohsen Hosseini; Duke FECD Fuchs Dystrophy GWAS: Sudha K. Iyengar, Robert P. Igo Jr, Jeremy R. Fondran; Duke Myopia Study: Terri L. Young, Sheng Feng; Erasmus Rucphen Family Study: Virginie J.M. Verhoeven, Caroline C. Klaver, Cornelia M. van Duijn; Estonian Genome Project / EGCUT: Andres Metspalu, Toomas Haller, Evelin Mihailov; FITSA: Olavi Pärssinen, Juho Wedenoja; Framingham Eye Study: Joan E. Bailey Wilson, Robert Wojciechowski; GEMT: Paul N. Baird, Maria Schache; Gutenberg Health Study: Norbert Pfeiffer, René Höhn; Hong Kong cohort study: Chi Pui Pang, Peng Chen; KORA: Thomas Meitinger, Konrad Oexle, Aharon Wegner; Kyoto high myopia: Nagahisa Yoshimura, Kenji Yamashiro, Masahiro Miyake; LIKI: Olavi Pärssinen; Myopia Genomics Study (Hong Kong HTI): Shea Ping Yip, Daniel W. H. Ho; Ogliastra Genetic Park Study: Mario Pirastu, Federico Murgia, Laura Portas, Genevra Biino; ORCADES: James F. Wilson, Brian Fleck, Veronique Vitart; Penn Family Studies: Dwight Stambolian, Joan E. Bailey Wilson; RAINE: Alex W. Hewitt, Wei Ang; Rotterdam Study: Virginie J.M. Verhoeven, Caroline C. Klaver, Cornelia M. van Duijn; SCES: Seang-Mei Saw, Tien-Yin Wong, Yik-Ying Teo, Qiao Fan, Ching-Yu Cheng, Xin Zhou, M. Kamran Ikram; SCORM: Seang-Mei Saw, Yik-Ying Teo, Qiao Fan, Ching-Yu Cheng, Xin Zhou, M. Kamran Ikram; SIMES: Seang-Mei Saw, Tien-Yin Wong, Yik-Ying Teo, Qiao Fan, Ching-Yu Cheng, Xin Zhou, M. Kamran Ikram; SINDI: Seang-Mei Saw, Tien-Yin Wong, Yik-Ying Teo, Qiao Fan, Ching-Yu Cheng, Xin Zhou, M. Kamran Ikram; SP2: Seang-Mei Saw, E-Shyong Tai, Yik-Ying Teo, Qiao Fan, Ching-Yu Cheng, Xin Zhou, M. Kamran Ikram; STARS: Seang-Mei Saw, Yik-Ying Teo, Qiao Fan, Ching-Yu Cheng, Xin Zhou, M. Kamran Ikram; TEST: David A. Mackey, Stuart MacGregor; TwinsUK: Christopher J. Hammond, Pirro G. Hysi; Utah Timorese: Margaret M. Deangelis, Margaux Morrison; Wenzhou: Xiangtian Zhou, Wei Chen; WESDR: Andrew D. Paterson, S. Mohsen Hosseini; Yokohama Study: Nobuhisa Mizuki, Akira Meguro; Young Finns Study: Terho Lehtimäki, Kari-Matti Mäkelä, Olli Raitakari, Mika Kähönen

The Fuchs' Genetics Multi-Center Study Group: William Reinhart, Michael W. Belin, Robert L. Schultze, Todd Morason, Alan Sugar, Shahzad Mian, Hunson Kaz Soong, Kathryn Colby, Ula Jurkunas, Richard Yee, Mark

Vital, Eduardo Alfonso, Carol Karp, Yunhee Lee, Sonia Yoo, Kristin Hammersmith, Elisabeth Cohen, Peter Laibson, Christopher Rapuano, Brandon Ayres, Christopher Croasdale, James Caudill, Sanjay Patel, Keith Baratz, William Bourne, Leo Maguire, Joel Sugar, Elmer Tu, Ali Djalilian, Vinod Mootha, James McCulley, Wayne Bowman, H. Dwight Cavanaugh, Steven Verity, David Verdier, Ann Renucci, Matt Oliva, Walter Rotkis, David R. Hardten, Ahmad Fahmy, Marlene Brown, Sherman Reeves, Elizabeth A. Davis, Richard Lindstrom, Scott Hauswirth, Stephen Hamilton, W. Barry Lee, Francis Price, Marianne Price, Kathleen Kelly, Faye Peters, Michael Shaughnessy, Thomas Steinemann, B.J. Dupps, David M. Meisler, Mark Mifflin, Randal Olson, Anthony Aldave, Gary Holland, Bartly J. Mondino, George Rosenwasser, Mark Gorovoy, Steven P. Dunn, David G. Heidemann, Mark Terry, Neda Shamie, Steven I. Rosenfeld, Brandon Suedekum, David Hwang, Donald Stone, James Chodosh, Paul G. Galentine, David Bardenstein, Katrina Goddard, Hemin Chin, Mark Mannis, Rohit Varma, and Ingrid Borecki

Wellcome Trust Case Control Consortium 2: Management Committee: Peter Donnelly (Chair), Ines Barroso (Deputy Chair), Jenefer M. Blackwell, Elvira Bramon, Matthew A. Brown, Juan P. Casas, Aiden Corvin, Panos Deloukas, Audrey Duncanson, Janusz Jankowski, Hugh S. Markus, Christopher G Mathew, Colin N.A. Palmer, Robert Plomin, Anna Rautanen, Stephen J. Sawcer, Richard C. Trembath, Ananth C. Viswanathan, and Nicholas W. Wood; *Data and Analysis Group:* Chris C.A. Spencer, Gavin Band, Céline Bellenguez, Colin Freeman, Garrett Hellenthal, Eleni Giannoulidou, Matti Pirinen, Richard Pearson, Amy Strange, Zhan Su, Damjan Vukcevic, and Peter Donnelly; *DNA, Genotyping, Data QC and Informatics Group:* Cordelia Langford, Sarah E. Hunt, Sarah Edkins, Rhian Gwilliam, Hannah Blackburn, Suzannah J. Bumpstead, Serge Dronov, Matthew Gillman, Emma Gray, Naomi Hammond, Alagurevathi Jayakumar, Owen T. McCann, Jennifer Liddle, Simon C. Potter, Radhi Ravindrarajah, Michelle Ricketts, Matthew Waller, Paul Weston, Sara Widaa, Pamela Whittaker, Ines Barroso, and Panos Deloukas; *Publications Committee:* Christopher G. Mathew (Chair), Jenefer M. Blackwell, Matthew A. Brown, Aiden Corvin, and Chris C.A. Spencer

The Diabetes Control and Complications Trial/Epidemiology of Diabetes Interventions and Complications Research Group: *Study Chairmen:* S. Genuth, D.M. Nathan, B. Zinman (vice-chair), and O. Crofford (past); *Members:* J. Crandall, M. Reid, J. Brown-Friday, S. Engel, J. Sheindlin, H. Martinez (past), H. Shamoon (past), H. Engel (past), M. Phillips R. Gubitosi-Klug, L. Mayer, S. Pendegast, H. Zegarra, D. Miller, L. Singerman, S. Smith-Brewer, M. Novak, J. Quin (past), W. Dahms (deceased), Saul Genuth (past), M. Palmert (past), D. Brillon, M. E. Lackaye, S. Kiss, R. Chan, V. Reppucci (past), T. Lee (past), M. Heinemann (past), F. Whitehouse, D. Kruger, J.K. Jones, M. McLellan (past), J. D. Carey, E. Angus, A. Thomas, A. Galprin (past), R. Bergenstal,

M. Johnson, M. Spencer (past), K. Morgan, D. Etwiler, (deceased), D. Kendall (past), Lloyd Paul Aiello, E. Golden, A. Jacobson (past), R. Beaser, O. Ganda, O. Hamdy, H. Wolpert, G. Sharuk, P. Arrigg, D. Schlossman, J. Rosenzweig (past), L. Rand (past), D.M. Nathan, M. Larkin, M. Ong, J. Godine, E. Cagliero, P. Lou, K. Folino, S. Fritz (past), S. Crowell (past), K. Hansen (past), C. Gauthier-Kelly (past), J. Service, G. Ziegler, L. Luttrell, S. Caulder, M. Lopes-Virella (past), J. Colwell (past), J. Soule (past), J. Fernandes, K. Hermayer, S. Kwon, M. Brabham (past), A. Blevins, J. Parker, D. Lee (past), N. Patel, C. Pittman, P. Lindsey (past), M. Bracey (past), K. Lee, M. Nutaitis, A. Farr (past), S. Elsing (past), T. Thompson (past), J. Selby (past), T. Lyons (past), S. Yacoub-Wasef (past), M. Szpiech (past), D. Wood (past), R. Mayfield (past), M. Molitch, B. Schaefer, L. Jampol, A. Lyon, M. Gill, Z. Strugula, L. Kaminski, R. Mirza, E. Simjanoski, D. Ryan, O. Kolterman, G. Lorenzi, M. Goldbaum, W. Sivitz, M. Bayless, D. Counts, S. Johnsonbaugh, M. Hebdon (past), P. Salemi, R. Liss, T. Donner (past), J. Gordon (past), R. Hemady (past), A. Kowarski (past), D. Ostrowski (past) S. Steidl (past), B. Jones (past), W.H. Herman, C.L. Martin, R. Pop-Busui, A. Sarma, J. Albers, E. Feldman, K. Kim, S. Elner, G. Comer, T. Gardner, R. Hackel, R. Prusak, L. Goings, A. Smith, J. Gothrup, P. Titus, J. Lee, M., Brandle, L. Prosser, D.A. Greene (past), M.J. Stevens (past), A.K. Vine (past), J. Bantle, N. Wimmergren, A. Cochrane, T. Olsen (past), E. Steuer (past), P. Rath (past), B. Rogness (past), D. Hainsworth, D. Goldstein, S. Hitt, J. Giangiacomo, D.S. Schade, J.L., Canady, J.E. Chapin, L.H. Ketani C, S. Braunstein, P.A. Bourne, S. Schwartz (past), A. Brucker, B.J. Maschak-Carey (past), L. Baker (deceased), T. Orchard, N. Silvers, C. Ryan, T. Songer, B. Doft, S. Olson, R.L. Bergren, L. Lobes, P. Paczan Rath, D. Becker, D. Rubinstein, P.W. Conrad, S. Yalamanchi, A. Drash (past), A. Morrison, M.L. Bernal, J. Vaccaro-Kish (past), J. Malone, P.R. Pavan, N. Grove, M.N. Iyer, A.F. Burrows, E.A. Tanaka (past), R. Gstalder (past), S. Dagogo-Jack, C. Wigley, H. Ricks, A. Kitabchi, M.B. Murphy (past), S. Moser (past), D. Meyer (past), A. Iannacone (past), E. Chaum, S. Yoser (past), M. Bryer-Ash (past), S. Schussler (past), H. Lambeth (past), P. Raskin, S. Strowig, B. Zinman, A. Barnie, R. Devenyi, M. Mandelcorn, M. Brent, S. Rogers, A. Gordon, J. Palmer, S. Catton, J. Brunzell, H. Wessells, I.H. de Boer, J. Hokanson, J. Purnell, J. Ginsberg, J. Kinyoun, S. Deeb, M. Weiss, G. Meekins, J. Distad, L. Van Ottingham (past), J. Dupre, J. Harth, D. Nicolle, M. Driscoll, J. Mahon, C. Canny, M. May, J. Lipps, A. Agarwal, T. Adkins, L. Survant, R.L. Pate, G.E. Munn, R. Lorenz (past), S. Feman (past) N. White, L. Levandoski, I. Boniuk, G. Grand, M. Thomas, D.D. Joseph, K. Blinder, G. Shah, Boniuk (past), Burgess (past), J. Santiago (deceased), W. Tamborlane, P. Gatcomb, K. Stoessel, K. Taylor (past), J. Goldstein (past), S. Novella (past), H. Mojibian (past), D. Cornfeld (past), J. Lima, D. Bluemke, E. Turkbey, R. J. van der Geest, C. Liu, A. Malayeri, A. Jain, C. Miao (past), H. Chahal (past), R. Jarboe (past), and J. Maynard; *Clinical Coordinating Center:* R. Gubitosi-Klug,

J. Quin, P. Gaston, M. Palmert (past), R. Trail (past), and W. Dahms (deceased); *Data Coordinating Center*: J. Lachin, P. Cleary, J. Backlund, W. Sun, B. Braffett, K. Klumpp, K. Chan (past), L. Diminick, D. Rosenberg (past), B. Petty (past), A. Determan (past), D. Kenny (past), B. Rutledge (past), Naji Younes (past), L. Dews, and M. Hawkins; *National Institute of Diabetes and Digestive and Kidney Disease Program Office*: C. Cowie, J. Fradkin, C. Siebert (past), and R. Eastman (past); *Central Fundus Photograph Reading Center*: R. Danis, S. Gangaputra, S. Neill, M. Davis (past), L. Hubbard (past), H. Wabers, M. Burger, J. Dingle-dine, V. Gama, and R. Sussman; *Central Biochemistry Laboratory*: M. Steffes, J. Bucksa, M. Nowicki, and B. Chavers; *Central Carotid Ultrasound Unit*: D. O'Leary, J. Polak, A. Harrington, and L. Funk (past); *Central ECG Reading Unit*: R. Crow (past), B. Gloeb (past), S. Thomas (past), and C. O'Donnell (past); *Central ECG Reading Unit*: E. Soliman, Z.M. Zhang, R. Prineas (past), and C. Campbell; *Central Neuropsychological Coding Unit*: C. Ryan, D. Sandstrom, T. Williams, M. Geckle, E. Cupelli, F. Thoma, B. Burzuk, and T. Woodfill; *Central ANS Reading Unit*: P. Low, C. Sommer, and K. Nickander; *Computed Tomography Reading Center*: M. Budoff, R. Detrano (past), N. Wong, M. Fox, L. Kim (past), and R. Oudiz; *External Evaluation Committee*: G. Weir (Chairman), M. Espeland, T. Manolio, L. Rand, D. Singer, M. Stern, A.E. Boulton, C. Clark (past), and R. D'Agostino (past); *Molecular Risk Factors Program Project*: M. Lopes-Virella, W.T. Garvey (past), T.J. Lyons, A. Jenkins, G. Virella, A. Jaffa, Rickey Carter, D. Lackland (past), M. Brabham (past), D. McGee (past), D. Zheng (past), and R.K. Mayfield (past); *Genetic Studies Group*: A. Boright, S. Bull, L. Sun, S. Scherer (past), and B. Zinman (past); *Epigenetics*: R. Natarajan, F. Miao, L. Zhang, and Z. Chen; *Editor, EDIC Publications*: D.M. Nathan