

UC Irvine

UC Irvine Previously Published Works

Title

Developmental origins of the human hypothalamic-pituitary-adrenal axis

Permalink

<https://escholarship.org/uc/item/66b0h2wm>

Journal

Expert Review of Endocrinology & Metabolism, 12(5)

ISSN

1744-6651

Authors

Howland, Mariann A
Sandman, Curt A
Glynn, Laura M

Publication Date

2017-09-03

DOI

10.1080/17446651.2017.1356222

Copyright Information

This work is made available under the terms of a Creative Commons Attribution License, available at <https://creativecommons.org/licenses/by/4.0/>

Peer reviewed



Published in final edited form as:

Expert Rev Endocrinol Metab. 2017 September ; 12(5): 321–339. doi:10.1080/17446651.2017.1356222.

Developmental origins of the human hypothalamic-pituitary-adrenal axis

Mariann A. Howland¹, Curt A. Sandman¹, and Laura M. Glynn^{1,2}

¹Department of Psychiatry and Human Behavior, University of California, Irvine, CA

²Department of Psychology, Chapman University, Orange, CA, USA

Abstract

Introduction: The developmental origins of disease or fetal programming model predicts that intrauterine exposures have life-long consequences for physical and psychological health. Prenatal programming of the fetal hypothalamic-pituitary-adrenal (HPA) axis is proposed as a primary mechanism by which early experiences are linked to later disease risk.

Areas covered: This review describes the development of the fetal HPA axis, which is determined by an intricately timed cascade of endocrine events during gestation and is regulated by an integrated maternal-placental-fetal steroidogenic unit. Mechanisms by which stress-induced elevations in hormones of maternal, fetal, or placental origin influence the structure and function of the emerging fetal HPA axis are discussed. Recent prospective studies documenting persisting associations between prenatal stress exposures and altered postnatal HPA axis function are summarized, with effects observed beginning in infancy into adulthood.

Expert commentary: The results of these studies are synthesized, and potential moderating factors are discussed. Promising areas of further research highlighted include epigenetic mechanisms and interactions between pre and postnatal influences.

Keywords

placenta; cortisol; CRH; fetal programming; prenatal stress; HPA axis; pregnancy; development

1. Introduction

The fetal period is a critical window of development, during which the architecture of the brain and other organ systems are fundamentally shaped. Within the first month of gestation, regions of the central nervous system are already formed and differentiated. Prolific neurogenesis occurs, with the majority of the brain's billions of neurons produced by mid-gestation [1]. An intricately timed sequence of organizational processes ensues, including neuronal migration, differentiation, synaptogenesis, apoptosis, and myelination [2]. Because

Correspondence to: Mariann A. Howland, 544 N. Cypress St., Orange, CA 92867, mahowlan@uci.edu, Phone: (714) 628-2787.

Declaration of Interest

The authors have no relevant affiliations or financial involvement with any organization or entity with a financial interest in or financial conflict with the subject matter or materials discussed in the manuscript. This includes employment, consultancies, honoraria, stock ownership or options, expert testimony, grants or patents received or pending, or royalties.

the developing fetal brain is plastic, it is highly susceptible to *in utero* exposures and experiences.

The developmental origins of disease or fetal programming model predicts that early exposures to a variety of adverse events and signals have life-long consequences for physical and psychological health [3, 4]. Programming refers to the effects of an environmental signal acting during a sensitive developmental period to influence the construction of specific organ systems [3–5]. The developing fetus is sensitive and responsive to maternal nutritional, vascular, immune, and endocrine signals that convey information about the quality of the external environment. In response to these signals, the fetus adjusts its developmental trajectory to prepare for its anticipated life after birth. If signals convey conditions of deprivation or stress, the fetus may accelerate or reduce its growth, or shift resources to benefit certain systems at a cost to other systems [6, 7]. These developmental alterations may be adaptive. For instance, if the postnatal environment matches that predicted by the prenatal environment, the infant may be well-equipped for his or her environment and may thrive. If there is a mismatch, the risk for disease may increase [4, 5, 8].

During fetal life, the hypothalamic-pituitary-adrenal (HPA) axis is under construction and therefore susceptible to prenatal programming influences. The fully mature HPA axis mobilizes the body's physical and psychological resources in response to stress and regulates many homeostatic systems in the body, including the metabolic, cardiovascular, immune, reproductive, and central nervous systems. Given the central role of the HPA axis in many survival functions and links between HPA axis dysregulation and disease [9–15], programming of this system during fetal life is proposed as a primary mechanism by which early experiences are linked to later health outcomes [3, 16–22].

In this review, we examine evidence supporting the hypothesis that prenatal stress exposures shape the developing fetal HPA axis and represent a primary fetal programming mechanism. First, we describe the prenatal endocrine milieu in which the fetal HPA axis develops. We then delineate mechanisms by which fetal exposure to prenatal stress may influence the structure and function of the emerging HPA axis. Finally, we summarize existing literature concerning the effects of prenatal stress on postnatal HPA axis functioning, spanning infancy to adulthood. There is a well-established non-human animal literature documenting the programming influences of prenatal stress on offspring outcomes, including HPA axis functioning [23–26]. Human gestational physiology and fetal HPA axis development differ even from that of closely related nonhuman primates, thereby limiting the generalizability of animal models [27, 28]. Thus, this review will focus solely on studies of prenatal stress and fetal HPA axis development in humans.

2. Biological stress system

The human biological “fight or flight” stress response is triggered under conditions of threat to homeostasis and involves activation of the HPA axis, in coordination with the locus ceruleus-norepinephrine (LC-NE)/sympathetic and immune systems. The primary regulator of the HPA axis is the 41-amino acid neuropeptide corticotropin-releasing hormone (CRH).

CRH-producing neurons in paraventricular nucleus of the hypothalamus are innervated by afferent projections from multiple brain regions, including the brain stem, lamina terminalis, extra-PVN hypothalamic nuclei, and limbic structures, which respond to different physical and emotional stressors [29–31; see Figure 1]. CRH is secreted, along with arginine-vasopressin (AVP), into the hypophyseal portal blood, via axons projecting to the median eminence. CRH binds to its receptors on corticotropes of the anterior pituitary, stimulating production of the 31K dalton prohormone proopiomelanocortin (POMC). POMC is cleaved by enzymes into adrenocorticotrophic hormone (ACTH) and other bioactive peptides. ACTH enters the bloodstream and induces secretion of the glucocorticoid steroid hormone cortisol from the zona fasciculata of the adrenal cortex (see Figure 1). This cascade of hormone events mobilizes the body's physiological and psychological resources to cope with the stressor and maintain homeostasis.

Circulating cortisol exerts its effects by binding to two types of receptors, the type I, high-affinity mineralocorticoid receptor (MR), and the type II, low-affinity glucocorticoid receptor (GR). Cortisol has a 10-fold higher affinity for MRs than for GRs, so at basal concentrations of cortisol, MRs are occupied and GRs remain largely unoccupied [32]. MRs are proposed to regulate the tonic actions of cortisol, including its normative diurnal rhythm and the sensitivity of the stress response, whereas GRs are increasingly occupied during periods of elevated cortisol in response to stress [10, 32–34]. The effects of stress-induced elevations in cortisol include activation and regulation of cardiovascular and immune systems, utilization of energy stores and gluconeogenesis, inhibition of feeding, reproductive, and growth functions, and enhancement of memory and attentional processes [9, 10, 18, 29, 35–37]. High levels of circulating cortisol inhibit further HPA activity by binding to GRs and MRs at the level of the hypothalamus, pituitary, and hippocampus [10, 30]. Under normal conditions, this negative feedback loop terminates the stress response, because its adaptive function is to respond to and prepare for immediate challenges. Prolonged or chronic stress exposures may have adverse effects and result in dysregulation of the HPA axis [9, 36, 38, 39].

HPA axis dysregulation is associated with a variety of pathological conditions, including metabolic and cardiovascular disease, hypertension, obesity, osteoporosis, altered gastrointestinal and immune function, sleep disturbances, and affective disorders [9, 11–15, 35, 37, 40–45]. Links between HPA axis functioning and disease states are likely complex and bidirectional, with HPA axis functioning serving as a risk factor for and/or a consequence of disease. Prospective, longitudinal studies provide evidence that HPA axis dysregulation precedes certain physical and psychological conditions. Higher diurnal cortisol output is predictive of increasing mental health symptoms across childhood [46], and higher cortisol awakening responses have been shown to predict onsets of anxiety and depressive disorders during adolescence and adulthood [47–52]. Blunted patterns of diurnal cortisol output have been associated with higher body mass index both concurrently and longitudinally during adolescence [53]. Higher diurnal cortisol output also prospectively predicts reduced hippocampal volume and memory deficits [54] as well as increased risk of cardiovascular-related mortality in older adults [55].

3. Maternal-placental-fetal stress system

Examining the link between prenatal stress and fetal HPA axis development requires an understanding of the dramatic changes that occur in both the maternal and developing fetal stress systems during the prenatal period. The growth of a new organ, the placenta, is primarily responsible for these changes. The placenta is the interface and area of exchange of signals or information between the maternal and fetal compartments. The placenta additionally produces its own hormones, most of which are identical to those produced in endocrine tissue of the non-pregnant adult [56, 57]. These placental hormones bind to maternal hormone receptors and act as allocrine factors, adjusting maternal physiology to benefit both mother and fetus [58]. Among the many hormones produced by the placenta is CRH, the primary regulator of the stress response system. CRH mRNA is expressed in the placenta by the seventh week of gestation [59], is identical to hypothalamic CRH in structure, immunoreactivity, and bioreactivity, and is released into both maternal and fetal compartments [59–63]. Placental CRH is a primary regulator of stress hormone production during pregnancy and both influences and is influenced by maternal and fetal stress signals. As such, the prenatal stress response system may be best conceptualized as an integrated maternal-placental-fetal steroidogenic unit [58; see Figure 2].

3.1 Changes in the maternal stress system

Over course of gestation, maternal production of stress peptides and hormones increases several-fold, largely as a result of placental CRH production. Concentrations of circulating CRH in the maternal plasma are almost exclusively of placental origin. The minute quantities of maternal hypothalamic CRH released into circulation are rapidly degraded and largely undetectable [58, 64]. Placental CRH production rises exponentially over gestation and increases in maternal plasma up to 1,000 times its non-pregnant level [65, 66]. By the end of gestation, maternal placental CRH levels are equivalent to those observed in the hypothalamic system only during acute psychological stress [67].

Increased unbound placental CRH in maternal plasma stimulates the synthesis and release of maternal ACTH from the anterior pituitary and downstream production of cortisol from the adrenal glands [68–71]. Maternal plasma cortisol levels increase 3–5-fold over the course of gestation, reaching levels comparable to those observed in Cushing's disease and certain psychopathological conditions [64, 66]. Unlike the negative feedback function of cortisol on CRH expression in the hypothalamus, maternal cortisol stimulates expression of CRH in the placenta [70]. A positive feedback loop is established, allowing for the simultaneous increase of placental CRH, ACTH, and cortisol in the maternal compartment over the course gestation [59, 66, 68, 70, 71; see Figures 2 and 3]. The maternal HPA axis is still subject to negative feedback inhibition, and as pregnancy advances towards term, increased levels of these hormones further blunt maternal HPA axis responsiveness to physiological and psychological stressors [72–78]. This dampening in stress responsivity likely serves an adaptive purpose, protecting the mother and her fetus from the deleterious effects of environmental stressors [72, 79, 80].

3.2 Developing fetal stress system

Because the fetal stress system is immature, it relies heavily upon maternal and placental inputs, functioning more so as an endocrine network than a linear axis [81]. The structures of the emerging fetal HPA axis undergo tremendous growth and organization during the prenatal period, and as gestation advances, fetal stress hormone production is increasingly evident.

The fetal hypothalamus forms from the ventral diencephalon and is differentiated by 9–10 weeks' gestation (see refs. 82, 83). The primordium of the anterior pituitary, Rathke's pouch, is formed from an invagination of oral ectoderm and is first evident at approximately 5 weeks' gestation (see refs. 58, 84–87). The hypothalamic-hypophyseal portal system is intact as early as 11 weeks' gestation [88]. CRH immunoactivity and bioactivity are detectable in fetal hypothalamic tissue extracts as early as 12–13 weeks' gestation, with bioactivity increasing as a function of gestational age [89]. CRH-immunoreactive fibers are present in the median eminence by 14–16 weeks' gestation [90], and CRH immunoactivity is present in the fetal pituitary from 12 weeks' gestation onwards [89]. The fetal hypothalamus therefore has the capacity to stimulate pituitary ACTH production from early in the second trimester. *In vitro*, fetal pituitary corticotrophs secrete significant amounts of ACTH as early as 8 weeks' gestation [91, 92], and administration of synthetic CRH stimulates ACTH secretion by the pituitary as early as 14 weeks' gestation [93, 94]. The extent to which endogenous fetal hypothalamic CRH is involved in regulating ACTH release *in vivo* remains uncertain [58]. Examination of endocrine profiles in preterm infants suggests that sequential release of hypothalamic CRH, ACTH and cortisol may not be established until late in gestation [95, 96].

The fetal adrenal cortex arises from the intermediate mesoderm. The adrenal primordium forms posteromedial to the urogenital ridge and is distinguishable at 33 days' post-conception [97–99]. By 8 weeks' gestation, the distinct zones of the cortex are apparent, and by 9 weeks' gestation, the cortex is completely encapsulated [27, 92, 97, 99]. The fetal adrenal cortex is active beginning early in gestation and is one of the most highly vascularized fetal organs [27]. Adrenal steroid hormones are involved in the regulation of intrauterine homeostasis and the maturation of organ systems [22, 27, 100]. *De novo* synthesis of cortisol from its precursor cholesterol requires the presence of specific steroidogenic enzymes, including 3 β -hydroxysteroid dehydrogenase/4–5 isomerase (3 β -HSD). A recent examination of first trimester fetal adrenals documented by immunohistochemistry a transient expression of 3 β -HSD from approximately 7–10 weeks' gestation [92]. *Ex vivo* tissue culture revealed cortisol synthesis regulated by ACTH and negative feedback apparent at the anterior pituitary. Therefore, early in gestation, *de novo* production of cortisol from cholesterol likely occurs briefly, which may function to regulate female sexual differentiation via inhibition of adrenal androgen production [92]. During most of the second trimester, fetal adrenal expression of 3 β -HSD is suppressed [101–103]. From approximately 23–24 weeks onward, 3 β -HSD and other requisite enzymes are again apparent, and cortisol production increases as gestation advances [101–103].

In addition to the patterning of steroidogenic enzymes, placental factors regulating fetal exposure to maternal cortisol are hypothesized to influence the timing of fetal pituitary-

adrenal activity. From early to mid-gestation, transfer of maternal cortisol to the fetus may function to suppress fetal ACTH production [104]. As gestation advances, increasing levels of the placental enzyme 11 β -hydroxysteroid dehydrogenase 2 (11 β -HSD-2) oxidize maternal cortisol into its metabolite cortisone, which does not act on glucocorticoid receptors [105–110]. Reduced maternal cortisol in the fetal circulation may then disinhibit the fetal pituitary, resulting in increased ACTH production [104, 107]. ACTH secreted from the fetal pituitary is the primary regulator of fetal adrenocortical development, stimulating the proliferation of adrenocortical cells *in vivo* [27].

However, rising levels of fetal cortisol over the second half of gestation [111–113] are *not* paralleled by large increases in fetal ACTH [111, 114]. Evidence suggests that placental hormones, particularly placental CRH, play a central role in regulating fetal adrenal development. Both the fetal pituitary and adrenal glands express CRH receptors [115, 116]. *In vitro*, CRH up-regulates ACTH receptor expression in isolated fetal adrenal cells [117]. Increasing levels of placental CRH could therefore enhance adrenal responsiveness to ACTH, promoting adrenal cortisol synthesis despite the limited availability of circulating fetal ACTH [117]. Placental CRH also may directly regulate adrenal cortisol production, as CRH stimulates cortisol synthesis and expression of requisite steroidogenic enzymes in isolated fetal adrenal cells [118, 119]. Increased fetal cortisol would in turn increase placental CRH levels, forming a positive feedback loop parallel to that of maternal cortisol and placental CRH [27, 70]. Higher levels of CRH in the umbilical vein as compared to the umbilical artery suggest that CRH in the fetal circulation is largely of placental origin [61].

Although the likely multiple mechanisms by which fetal cortisol production is regulated are not fully understood, escalation of fetal cortisol production from the end of the second trimester through the third trimester is evident [111–113]. By 30 weeks, the fetal adrenal cortex resembles a rudimentary form of the adult adrenal cortex [120]. Late in pregnancy, at approximately 34–35 weeks' gestation, levels of 11 β -HSD-2 decrease [107, 108, 121], allowing for greater transfer of maternal cortisol into the fetal compartment. Increased maternal cortisol in the fetal circulation would suppress fetal ACTH production. The increased transfer of maternal cortisol to the fetus is thought to constitute a back-up mechanism to ensure fetal organ maturation and may explain why fetuses with glucocorticoid deficiencies are born without signs of organ immaturity [27, 58]. By term, approximately 75% of the cortisol in fetal circulation is of fetal origin, with the remaining 25% of maternal origin [105]. In addition to ensuring adequate maturation of fetal organ systems, elevated maternal and fetal cortisol late in gestation may act to influence the timing of parturition [27, 70, 100, 121, 122].

4. Fetal exposure to prenatal stress hormones

Fetal exposure to maternal and placental stress hormones is considered a primary biological pathway by which various forms of prenatal psychological and biological stress influence the development of the fetal HPA axis. Maternal cortisol and placental CRH are key prenatal stress hormones which may program the emerging fetal HPA axis. The maternal-placental-fetal steroidogenic unit produces massive amounts of these stress hormones during pregnancy. While exponential increases in these hormones are normative and necessary for

successful gestation and parturition, the fetus is vulnerable to further stress-induced increases in these hormones. In cases of extreme stress to the system and rapidly accelerating levels of stress hormones, especially placental CRH, preterm birth may result [66, 123, 124]. Increasing evidence suggests that stress-induced increases in hormones also exert programming influences on fetal HPA axis development independent of birth phenotype.

4.1 Exposure to maternal cortisol

The effects of elevated maternal cortisol appear to be dependent upon the timing of exposure. As previously stated, the fetus is less protected from maternal cortisol during early and late gestation, when placental 11 β -HSD-2 levels are lower [105–109, 121]. Excess maternal cortisol during early to mid-gestation appears to exert negative effects on the fetus, whereas elevated maternal cortisol near term is beneficial, promoting fetal organ maturation and enhanced neurodevelopment [125–129]. Although 11 β -HSD-2 limits fetal exposure to maternal cortisol as gestation advances, it is only a partial barrier [130, 131], with approximately 15% of maternal cortisol crossing through the placenta unmetabolized [106, 131, 132]. Mid to late-gestational maternal and fetal cortisol levels are correlated, with approximately 40% of their variance shared [130, 131]. Additional associations have been documented between maternal cortisol and amniotic fluid cortisol [133] and between maternal and neonatal ACTH and cortisol levels at birth [134].

Because some maternal cortisol does reach the fetus, elevations in maternal cortisol in response to physical or psychological stress may subsequently elevate cortisol levels in the fetal circulation [106, 111, 130, 131, 135]. Increased maternal stress also may increase fetal exposure to cortisol by downregulating placental 11 β -HSD-2 activity, thus allowing a greater proportion of maternal cortisol to cross into the placenta and then enter fetal circulation. Several key biological stress signals act to downregulate placental 11 β -HSD-2, including catecholamines [136], proinflammatory cytokines [137, 138], and hypoxic factors [139]. Prenatal maternal anxiety and depressive symptoms are respectively associated with reduced placental 11 β -HSD-2 gene expression and activity [140]. Decreased 11 β -HSD-2 activity may account for the greater concordance observed between maternal and amniotic fluid cortisol as a function of increased maternal anxiety [141].

Exposure to excessive concentrations of cortisol could alter glucocorticoid receptor density and function at each level of the fetal HPA axis, thereby calibrating the sensitivity of the system to feedback mechanisms [23, 142]. Glucocorticoid receptors are highly expressed throughout the developing brain, particularly so in regions providing excitatory (e.g., amygdala) and inhibitory (e.g., hippocampus) inputs to the HPA axis [22, 24, 30, 143–147]. GRs and MRs are abundant in the hippocampus [10, 32], with both receptor types expressed in this region as early as 24 weeks' gestation [147]. Prenatal glucocorticoid exposure is associated with decreased hippocampal GR and MR density in non-human animals, resulting in decreased negative feedback regulation of the HPA axis [10, 142, 147–150]. Additional findings from animal models indicate that excess glucocorticoids alter the density of MRs and GRs and increase production of CRH in the amygdala, with increased forward drive to the axis [25, 142, 148]. In humans, exposure to elevated maternal cortisol early in

gestation is associated with increased volume of the right amygdala in female children [127]. The balance of GRs and MRs in the hippocampus and other brain regions is critical to HPA axis sensitivity, drive, and inhibition, with a GR/MR imbalance resulting in dysregulation of the axis and is implicated in depression and other psychopathological conditions [10, 151].

4.2 Exposure to placental CRH

Like the hypothalamus, the placenta produces CRH in response to stress. Unlike the negative feedback influence of cortisol on hypothalamic CRH expression, maternal and fetal cortisol stimulate placental CRH expression, constituting parallel positive feedback loops [27, 59, 64, 68, 70]. Elevations in maternal cortisol may therefore act on fetal development indirectly through increased placental CRH production. *In vivo*, elevated levels of maternal cortisol early in gestation are associated with accelerated trajectories of placental CRH [66, 152]. CRH is also released from cultured human placental cells in a dose-response manner to a number of other major biological stress signals, including catecholamines, proinflammatory cytokines, and angiotensin-II [153, 154]. Consistent with these *in vitro* studies, stress-related intrauterine conditions such as reduced uterine blood flow, nutrient restriction, and infection are associated with increases in placental CRH [155–157]. Elevated placental CRH levels also are observed in women with higher maternal pregnancy-specific anxiety [158], perceived stress [159] and depressive symptoms [160–162], and in women with lower social support from family [163]. Thus, placental CRH may represent an integrative pathway by which various prenatal stressors of both maternal and fetal origin shape the developing fetal HPA axis.

As previously discussed, placental CRH likely acts to increase fetal cortisol production, both directly, by stimulation of the fetal adrenals, and indirectly, by increasing fetal adrenal responsiveness to ACTH [115–119]. Upregulated placental CRH via any of the biological stress signals promoting its production could therefore induce exaggerated fetal adrenal cortisol production or program the sensitivity of the adrenal glands to ACTH [70, 111, 118]. Elevated placental CRH in the fetal circulation presumably permeates the immature fetal blood-brain barrier [164], where CRH receptors are widely expressed from 13 weeks' gestation [165]. CRH mRNA-expressing neurons are particularly abundant in the amygdala and hippocampus, which provide excitatory and inhibitory input to the hypothalamus, respectively [30, 144]. Animal models indicate that excess circulating CRH upregulates CRH and CRH receptor mRNA expression in these regions, with consequences for neuronal function and integrity [24, 142, 144]. For example, administration of CRH to the brains of immature rodents results in progressive loss of hippocampal neurons, which may impair hippocampal negative feedback regulation of the HPA axis [144]. Several human studies provide additional support for programming effects of placental CRH on the fetal brain, linking placental CRH exposures with fetal neurodevelopment [166–168] and with stress-related outcomes in infancy and childhood [169, 170].

5. Prenatal stress exposures and postnatal HPA axis function

Programming of the developing fetal HPA axis is proposed as a plausible mechanism by which prenatal stress influences offspring physiological and psychological outcomes,

including risk for cardiovascular and metabolic disease, compromised immune function, and mental disorders [18–21, 171]. We review here studies in which postnatal HPA axis functioning is the direct outcome of interest and in which maternal prenatal stress is indexed directly rather than inferred from birth phenotype (for reviews of studies linking shortened gestation and small size at birth with altered HPA axis functioning, see refs. 21, 172, 173). One challenge that limits the ability to draw firm conclusions about persisting influences of prenatal stress exposures on HPA axis functioning is the broad range of measures of both prenatal stress and HPA axis functioning utilized. For this review, we conceptualize prenatal stress as encompassing both stress exposures, such as life events, and different physiological or psychological responses to stress, such as cortisol levels or symptoms of anxiety or depression [174]. In characterizing HPA axis functioning, some studies have considered basal cortisol levels at a single time point. Other investigations have measured cortisol response to laboratory or naturalistic stressors. Saliva samples are collected prior to the stressor (baseline) and at several intervals post-stressor to examine the peak and recovery of the cortisol response. Finally, several studies have evaluated profiles of diurnal cortisol output. In the mature HPA axis, cortisol levels follow a normative diurnal rhythm, with a 50–100% increase in levels observed upon awakening (termed the cortisol awakening response, or CAR), peak levels approximately 30–45 minutes after awakening, and a decline in levels across the remainder of the day [175–177]. Table 1 summarizes these existing studies, with findings observed in the neonate, infant, child, adolescent, and adult. While variable in their methodologies and results, these studies provide strong support for the notion that prenatal stress programs the developing fetal HPA axis, with persisting consequences for its function.

5.1 Neonate

Several studies have assessed levels of neonatal cortisol upon or shortly after delivery. Neonates exposed to elevated levels of maternal depressive symptoms over the latter half of gestation exhibited higher levels of ACTH as compared to infants exposed to low levels of maternal depressive symptoms [178]. Two other investigations found that neonates of mothers with elevated prenatal depressive symptoms had higher levels of urinary cortisol [179, 180]. Only one known study to date has examined cortisol responses to a stressor in a neonatal sample [128]. Elevated maternal cortisol from 21 to 35 weeks' gestation was associated with an exaggerated neonatal salivary cortisol response to the painful stress of the heel-stick blood draw, with the strongest effects observed at 25 weeks' gestation. Cumulatively, these studies suggest that prenatal stress predicts heightened HPA axis activity during the neonatal period.

5.2 Infant

Studies that have assessed cortisol responses to routine stressors in the first several months of infancy and have documented elevated cortisol responses in stress-exposed infants. Stroud et al. [181] measured 1-month-old infants' cortisol responses to a neurobehavioral examination in which the infant is observed and handled during periods of sleep, wakefulness, crying, and non-crying. Infants of mothers with prenatal depressive disorders demonstrated higher baseline cortisol levels and greater responses to the stressor, as compared to infants of mothers who were not depressed during their pregnancy. This effect was observed primarily in female infants. Furthermore, placental 11 β -HSD-2 methylation

appeared to moderate these effects. Among those infants exposed to prenatal maternal depression, decreases in 11 β -HSD-2 methylation were associated with increases in baseline cortisol. Tollenaar et al. [182] similarly found that higher maternal pregnancy-related anxiety predicted higher infant cortisol responses to a bathing session at 5 weeks of age.

There is some evidence that after the first several months of life, a developmental shift in HPA axis functioning occurs, and a period of hyporesponsiveness to stress is observed [183]. Several studies have measured cortisol responses to vaccinations or laboratory stressors in infants ranging from 2 to 17 months of age. These investigations, while diverse in their findings, on average suggest that infants exposed to higher levels of prenatal stress may present with greater HPA axis hypoactivity at this stage of development. A few of these studies have assessed infant cortisol responses to vaccination. Higher maternal pregnancy-related anxiety was associated with decreased infant cortisol reactivity to vaccination in 2-month-old infants [182]. Alternatively, Braithwaite et al. [184] found no effect of maternal prenatal depressive symptoms on cortisol response to vaccination in 2–4-month-old infants. Other studies have examined infant cortisol responses to standardized laboratory stressors. Rash [185] measured the effects of maternal prenatal diurnal cortisol output on cortisol response to a frustration task in 6-month-old infants. Infants who exhibited decreases in cortisol in response to the task (as opposed to an increase) were exposed to a flatter maternal diurnal profile (less of a decline in cortisol over the course of the day) at 15 weeks' gestation. Another investigation examined cortisol response to the stressful still-face procedure in 7-month-old infants of mothers with and without prenatal anxiety disorders [186]. Differences in infant cortisol profiles only emerged 25–40 minutes post-stressor; infants of mothers without prenatal anxiety exhibited decreases in cortisol, and infants of mothers with prenatal anxiety displayed non-significant increases in cortisol. Finally, two studies have examined infant cortisol responses to a maternal separation paradigm [140, 182]. Higher maternal pregnancy-related anxiety was associated with a lower cortisol response in 12-month-old infants [182], and higher amniotic fluid cortisol was associated with higher baseline cortisol and a blunted cortisol response in 17-month-old infants [140].

5.3 Child

Multiple studies have examined either cortisol response or diurnal cortisol output in childhood. All of these studies document hyperactivity of the HPA axis in children exposed to higher levels of prenatal stress. Elevated levels of maternal prenatal depression and anxiety predicted higher cortisol levels across a series of tasks in 2–5-year-old female children, with no differences observed in profiles of response to the tasks [187]. Higher prenatal maternal early morning salivary cortisol and pregnancy related-anxiety were associated with higher overall cortisol levels in 4–6-year-old children on the day of a vaccination [188] and higher overall cortisol levels in 5-year-old children on school days [189]. Another study measured 10-year-old children's cortisol responses to a laboratory stressor and identified three cortisol profiles over the stressor: low levels with no response, moderate levels with no response, and high levels with response [190]. Prenatal maternal intimate partner violence increased the likelihood of membership in the high response group, as compared to the low and moderate flat groups. One additional study measured diurnal

cortisol output in 10-year-old children and found that higher maternal prenatal anxiety was associated with higher awakening cortisol levels [191].

5.4 Adolescent

A few investigations have extended examination of offspring HPA axis functioning into the adolescent period. Two studies assessed adolescents' diurnal cortisol output and documented hypoactivity in adolescents exposed to prenatal stress. Higher maternal prenatal anxiety and depression predicted an altered pattern of diurnal salivary cortisol in 15-year-old children, reflected in a reduced cortisol awakening response and a flatter cortisol decline (smaller decrease from awakening to evening) over the day [192]. Similarly, elevated prenatal maternal anxiety was associated with a flatter diurnal cortisol decline in 14–15-year-old children [193]. One additional study defined prenatal stress as exposure to a disaster during pregnancy [194]. A birth cohort of 14-year-old Finnish twins whose mothers were pregnant during the Chernobyl disaster was compared with a reference group of twins whose mothers were pregnant one year after the disaster. Cortisol levels measured once upon arrival to a laboratory visit were higher in adolescents whose mothers were in their second or third trimester during the Chernobyl disaster, as compared to non-exposed adolescents.

5.5 Adult

Finally, one known study has examined the effects of prenatal stress, measured by maternal experience of a major negative life event during pregnancy, on multiple measures of HPA axis activity in adulthood [195]. Young adult children who reported that their mothers had experienced a negative life event during their pregnancy were compared with an age-matched control group. As compared to the control group, the prenatal stress-exposed group exhibited hypoactivity in several domains, reflected in lower pre-stressor cortisol levels and lower cortisol levels during pharmacological stimulation of the pituitary via an ACTH_{1–24} stimulation test. However, the prenatal stress-exposed group also exhibited increased reactivity to the stressor, with greater increases in cortisol in response to the stressor. No differences in diurnal cortisol output were exhibited between the two groups. A limitation of this investigation was that prenatal maternal negative life events were obtained retrospectively by adult children in communication with their mothers at the time of assessment.

5.6 Synthetic glucocorticoid exposure

Administration of synthetic glucocorticoids (GCs) is the standard of care for pregnant women at risk for premature delivery between 24 and 34 weeks' gestation, because this treatment effectively reduces mortality and promotes lung maturation among infants born preterm [196, 197]. Synthetic GCs are not metabolized by placental 11 β -HSD-2 and therefore readily cross into the placenta, where they act on developing fetal organ systems [198, 199]. Evidence indicates that prenatal synthetic GC exposures are associated with dysregulated postnatal HPA axis function. For example, compared to non-exposed preterm neonates, exposed preterm neonates exhibit no increases or decreases in cortisol in response to a heel-stick blood draw [200–203]. Because determining if preterm delivery will actually occur is difficult and imprecise, many women who receive synthetic GCs often go on to deliver beyond 37 weeks' gestation [204]. One study demonstrated that full-term neonates

exposed to synthetic GCs prenatally exhibited a larger cortisol response to the heel-stick procedure, as compared to non-exposed neonates [205]. These effects appear to persist into childhood, with prenatal synthetic GC exposure predicting greater increases in cortisol in response to a laboratory stressor in term-born children [206] and in preterm-born adolescents [207]. Several studies have also documented that children and adolescents exposed to prenatal synthetic GCs display alterations in diurnal cortisol output, evident in an absence of a CAR [207, 208] and a flatter decline in cortisol over the day [208]. This literature provides additional support for the programming effects of excess glucocorticoids on long-term HPA axis function.

6. Expert commentary

A growing body of research has linked prenatal stress exposures with HPA axis functioning from infancy into adulthood. HPA axis dysregulation in prenatal stress-exposed individuals has been documented at multiple levels of functioning, including diurnal rhythms and responses to stress. It remains unclear as to how these different aspects of HPA axis function may interact or reflect similar or different markers of risk [209], particularly since studies have primarily focused on either diurnal rhythms or responses to stress and not their synergistic effects. Additionally, there is no clear consensus within the literature as to whether prenatal stress is associated with hyperactivity or hypoactivity of the axis. The wide variation in methodologies employed across these studies may in part account for the apparent inconsistency in findings (see ref. 209 for a relevant discussion).

It is also plausible that these discrepancies reflect meaningful developmental patterns. First, there is evidence that both diurnal cortisol output and cortisol response to stress vary over the course of development. Several studies indicate that after the first few months of infancy, during which stress reactivity is observed, a period of hyporesponsiveness of the stress system occurs, coinciding with the emergence of the diurnal rhythm of the HPA axis [183, 210–213]. Factors like sleep patterns and quality of caregiving are proposed to underlie this normative developmental shift, which may persist from 2 months until midway through the second year of life [183, 211–213]. Interestingly, the effects of prenatal stress on infant cortisol response observed in the study by Tollenaar et al. [182] appear to follow this shift, with higher prenatal stress predicting hyperactivity at 5 weeks, and hypoactivity at 2 and 12 months. Additional developmental changes in HPA axis functioning may occur as a result of puberty [214, 215]. Second, activity of the HPA axis may differ depending upon whether stressors are acute or chronic. Exposure to prenatal stress may result in a more reactive HPA axis initially, but prolonged hyperactivity may eventually result in downregulation of the system, with a dampening of diurnal cortisol output and hyporeactivity to stress later in life [183, 216, 217]. Support for this phenomenon is evident in the patterns of hypocortisolism observed in children and adults exposed to severe or chronic stress [183, 217]. Two of the studies discussed above examined diurnal cortisol output in 10-year-old [191] and 15-year-old [192] children drawn from the same longitudinal cohort study. While there were too few children participating in both the 10 and 15-year follow-ups to directly test the possibility of a shift from hyperactivity to hypoactivity of the axis, the pattern of findings is consistent with such a shift.

In terms of their characterizations of prenatal stress, investigations have focused on maternal psychological functioning or maternal cortisol output. A primary assumption of this research is that elevations in maternal and placental stress hormones mediate the effects of prenatal psychological stress on fetal HPA axis development. However, results of studies examining links between maternal prenatal psychological stress and stress hormones, primarily maternal cortisol, are equivocal at best (see ref. 218 for a systematic review). The paradoxical increase in maternal stress hormones and decrease in psychological and physiological responsiveness to stress as gestation advances may partly explain why psychological and biological markers of maternal stress are not reliably coupled. Most investigations have focused on individual differences between average levels of maternal prenatal psychological stress and stress hormones, examining whether mothers with higher psychological stress also exhibit higher stress hormone levels. A more precise measure of the concordance between psychological and physiological stress may be intra-individual associations between these parameters of stress. One research group has reported positive covariation between prenatal maternal negative mood and salivary cortisol over the course of the day [219, 220]. There is also some evidence that prenatal maternal psychological stress alters overall trajectories of cortisol output over gestation [221] and is reflected in integrated measures of cortisol activity, such as cortisol measured in hair [222]. It is additionally plausible that prenatal maternal psychological stress influences fetal HPA axis development through mechanisms other than prenatal maternal cortisol, such as placental CRH exposures or vascular or immune channels [223–227]. Research must continue to evolve and utilize a more comprehensive approach in understanding the variety of stress exposures that may influence fetal HPA axis development.

Careful consideration should also be given to factors that may moderate fetal exposure to prenatal stress. Particularly important may be the timing of prenatal stress. It is known that prenatal exposures during different gestational intervals exert differential effects, depending on the fetal developmental processes occurring at the time [24, 171, 228]. Furthermore, since maternal stress responsiveness is downregulated as gestation advances, stressful events experienced early in pregnancy trigger greater maternal stress responses and therefore have the potential to exert greater influence on the fetus than stressors experienced later in gestation [72–78, 229, 230].

Fetal sex also may moderate the programming effects of prenatal stress on the fetal HPA axis. Substantial evidence indicates that there are sex-specific trajectories of fetal development, related to the response of the placenta to stress [231, 232]. Female and male fetuses appear to exhibit contrasting growth strategies, whereby in response to stress exposures, female fetuses adjust their growth and male fetuses do not [232, 233]. This may be because the female placenta is more sensitive and responsive to changes in cortisol concentrations during gestation as compared to the male placenta. For example, in the presence of maternal inflammatory disease, female placental 11β -HSD-2 expression and activity are significantly decreased, with corresponding elevations in circulating cortisol levels and reductions in birthweight [234]. Conversely, male placental GR mRNA expression is increased, with no changes observed in 11β -HSD-2 activity, cortisol level, or growth [234]. Similarly, Osei-Kumah et al. [235] measured alterations in placental gene expression as a function of maternal inflammatory disease and observed many more gene

alterations in female placentae as compared to male placentae. Thus far, the potential moderating effect of fetal sex on the relationship between prenatal stress and HPA axis outcomes has been largely unexamined. Several studies document stronger effects of maternal prenatal stress on cortisol output in female children [181, 187, 191]. Additionally, van den Bergh et al. [193] reported an effect of maternal prenatal anxiety on diurnal salivary cortisol profiles in both sexes, but the altered cortisol profile was associated with depressive symptoms only in female adolescents. It is clear that additional research is needed to understand the precise mechanisms by which various prenatal stressors influence patterns of HPA axis development and factors that may moderate these effects.

7. Five-year view

During the fetal period, experiences and exposures shape developing organ systems to promote optimal functioning in life after birth. A growing number of prospective, longitudinal studies have assessed links between prenatal stress and later developmental outcomes, including HPA axis functioning. The primary focus of these existing investigations has been exposure to elevations in maternal psychological distress and maternal cortisol. Additional stress signals likely shape the developing fetal HPA axis. Among these is placental CRH, a direct and integrative index of fetal exposure to a variety of stressors. Placental CRH is upregulated by maternal and fetal cortisol, catecholamines, proinflammatory cytokines, and vascular changes [70, 137, 138, 153, 154, 156] and appears to directly influence fetal pituitary-adrenal growth and steroidogenesis [115–119]. Future research should focus on placental CRH as an indicator of prenatal stress-induced alterations in HPA axis functioning.

An emerging and promising area of research suggests that gene-environment interactions may also mediate the effects of prenatal stress on HPA axis development and function. Epigenetic mechanisms involve changes in gene expression, which can arise during critical periods of development in response to environmental exposures and may remain stable into adulthood [18, 236, 237]. Increasing evidence suggests that prenatal stress is associated with epigenetic change in HPA axis genes, particularly methylation in the promoter region of NR3C1, the gene encoding the glucocorticoid receptor [238]. As previously mentioned, GRs play a critical role in negative feedback inhibition of the HPA axis response. For example, increased methylation of NR3C1 results in decreased expression of hippocampal GR, dampening of HPA axis negative feedback, and a prolonged increase in circulating glucocorticoid levels in rodents [146]. In adult humans, childhood abuse is associated with increased promoter methylation and decreased expression at the NR3C1 gene in hippocampal brain tissue [239].

Several studies have examined links between prenatal stress and peripheral measures of NR3C1 methylation. Higher levels of prenatal maternal depression and anxiety [240, 241] and diurnal cortisol output [241] were associated with increased methylation of NR3C1 in cord blood, which predicted increased infant cortisol response to stress at 3 months [240]. Elevations in prenatal maternal depression and anxiety also predicted increased placental NR3C1 and 11 β -HSD-2 methylation [242]. One study considered the impact of prenatal exposure to chronic stress and war-related trauma in a sample of mothers and infants in the

Democratic Republic of Congo, documenting methylation of multiple genes regulating HPA axis function (CRH, CRHBP, NR3C1, and FKBP5) in maternal blood, cord blood, and placental tissue [243]. There is some evidence that the effects of prenatal-induced epigenetic modifications may extend into adolescence and adulthood [244] and may be further transmitted across multiple generations [245]. While the relationship between epigenetic variation in the periphery and in brain is currently unknown, these findings encourage further examination of the interactive influence of genes and environmental stressors on HPA axis development.

Finally, future research could examine how the pre and postnatal environments act independently or synergistically to shape development of the HPA axis. A few investigations have considered the additive or moderating effects of the postnatal environment on stress responsiveness [186, 246–249]. Kaplan et al. [249] reported that postnatal maternal sensitivity moderated the effects of prenatal maternal mood disorder on baseline cortisol in 4-month-old infants. Specifically, infants of mothers with a prenatal maternal mood disorder exhibited elevated cortisol only in context of low maternal sensitivity, and infants of mothers without a prenatal maternal mood disorder had low cortisol regardless of maternal sensitivity. In this sense, the effects of prenatal stress may be amplified in context of an impoverished postnatal environment or may be attenuated in a high-quality environment. The predictive adaptive response hypothesis alternatively posits that developmental adjustments made in response to prenatal stress signals are adaptive when the actual postnatal environment matches that predicted by the prenatal environment [4, 5, 8]. Consistent with this argument, one study indicated that infants exhibited more extreme salivary cortisol responses to a maternal separation stressor, reflected in an extended response and lack of recovery, if maternal prenatal and postnatal depressive symptom levels were discordant [247]. Infants exposed to consistently low levels of depressive symptoms exhibited the most normative profiles of response and recovery from the stressor. Collectively, these studies provide additional evidence that the developing fetal HPA axis is sensitive to and shaped by the conditions of the intrauterine environment, but additionally suggest that the effects of prenatal stress exposures should be considered in the context of the postnatal environment.

While the multiple complex mechanisms regulating the development of the fetal HPA axis are not fully understood, studies reviewed here provide strong evidence that prenatal stress exposures shape the developing axis and exert persisting influence on its function into adulthood. Given the fundamental role of the HPA axis in regulating many of the body's homeostatic systems and associations between HPA axis dysregulation and disease [9–15], programming of the axis is a plausible mechanism underlying links between early exposures and later health outcomes, including risk for cardiovascular, metabolic, immune, and mental disorders [3, 16–22]. The HPA axis is an ancient physiological system that has been maintained by natural selection and conserved across species, promoting adaptation and survival in response to environmental threats [250]. The sensitivity and plasticity of the developing fetal HPA axis stress to exposures signaling the state of the external environment also appears to be deeply rooted in human evolutionary history [251] and would have been of value to our ancestors, ensuring offspring would be well-suited to survive in a presumably limiting and hostile environment [4, 5]. However, activation of this same stress response

system may no longer be adaptive in modern environments characterized by urbanization, nutritional abundance, and a sedentary lifestyle, in which stressors are frequent and chronic but seldom require fight or flight [252, 253]. Stress related-alterations in physiology may instead prove detrimental to health and confer risk for disease. Interventions focused on improving the quality of maternal and fetal health *in utero* may assist in closing the gap between the stress responses conferred on us by our evolutionary past and those better suited for modern day circumstances.

Acknowledgments

Funding

This paper was funded by National Institute of Health grants NS-41298, HD-51852, HD-28413, and HD-40967 and NIMH Conte Center award MH-96889.

References

Reference annotations

* Of interest

** Of considerable interest

1. Stiles J and Jernigan TL, The basics of brain development. *Neuropsychol Rev*, 2010 20(4): p. 327–48. [PubMed: 21042938]
2. Rice D and Barone S, Jr., Critical periods of vulnerability for the developing nervous system: evidence from humans and animal models. *Environ Health Perspect*, 2000 108 Suppl 3: p. 511–33. [PubMed: 10852851]
3. Barker DJ, In utero programming of chronic disease. *Clin Sci (Lond)*, 1998 95(2): p. 115–28. [PubMed: 9680492]
4. Gluckman PD and Hanson MA, Developmental origins of disease paradigm: a mechanistic and evolutionary perspective. *Pediatr Res*, 2004 56(3): p. 311–7. [PubMed: 15240866]
5. Gluckman PD, Hanson MA, and Spencer HG, Predictive adaptive responses and human evolution. *Trends Ecol Evol*, 2005 20(10): p. 527–33. [PubMed: 16701430]
6. Kuzawa CW, Fetal origins of developmental plasticity: are fetal cues reliable predictors of future nutritional environments? *Am J Hum Biol*, 2005 17(1): p. 5–21. [PubMed: 15611967]
7. Sandman CA, Davis EP, and Glynn LM, Psychobiological stress and preterm birth, in *Preterm birth- Mother and child*, Morrison J, Editor. 2012, InTech p. 95–124.
8. Sandman CA, Davis EP, and Glynn LM, Prescient human fetuses thrive. *Psychol Sci*, 2012 23(1): p. 93–100. [PubMed: 22173740]
9. O'Connor TM, O'Halloran DJ, and Shanahan F, The stress response and the hypothalamic-pituitary-adrenal axis: from molecule to melancholia. *QJM*, 2000 93(6): p. 323–33. [PubMed: 10873181]
10. De Kloet ER, et al., Brain corticosteroid receptor balance in health and disease. *Endocr Rev*, 1998 19(3): p. 269–301. [PubMed: 9626555]
11. Stratakis CA and Chrousos GP, Neuroendocrinology and pathophysiology of the stress system. *Stress*, 1995 771: p. 1–18.
12. Chrousos GP, The role of stress and the hypothalamic-pituitary-adrenal axis in the pathogenesis of the metabolic syndrome: neuro-endocrine and target tissue-related causes. *Int J Obes Relat Metab Disord*, 2000 24 Suppl 2: p. S50–5. [PubMed: 10997609]
13. Nicolaides NC, Charmandari E, and Chrousos GP, The hypothalamic-pituitary-adrenal axis in human health and disease, in *Introduction to translational cardiovascular research*, Cokkinos DV, Editor. 2015, Springer International Publishing: Switzerland p. 91–107.

14. McEwen BS, et al., The role of adrenocorticoids as modulators of immune function in health and disease: Neural, endocrine and immune interactions. *Brain Research Reviews*, 1997 23(1–2): p. 79–133. [PubMed: 9063588]
15. Yehuda R and Seckl J, Minireview: Stress-related psychiatric disorders with low cortisol levels: a metabolic hypothesis. *Endocrinology*, 2011 152(12): p. 4496–503. [PubMed: 21971152]
16. Clark PM, Programming of the hypothalamo-pituitary-adrenal axis and the fetal origins of adult disease hypothesis. *Eur J Pediatr*, 1998 157 Suppl 1: p. S7–10. [PubMed: 9462899]
17. Harris A and Seckl J, Glucocorticoids, prenatal stress and the programming of disease. *Horm Behav*, 2011 59(3): p. 279–89. [PubMed: 20591431]
18. Xiong F and Zhang L, Role of the hypothalamic-pituitary-adrenal axis in developmental programming of health and disease. *Front Neuroendocrinol*, 2013 34(1): p. 27–46. [PubMed: 23200813]
19. Fowden AL, Giussani DA, and Forhead AJ, Endocrine and metabolic programming during intrauterine development. *Early Hum Dev*, 2005 81(9): p. 723–34. [PubMed: 16085373]
20. Braun T, et al., Early-life glucocorticoid exposure: the hypothalamic-pituitary-adrenal axis, placental function, and long-term disease risk. *Endocr Rev*, 2013 34(6): p. 885–916. [PubMed: 23970762]
21. Reynolds RM, Glucocorticoid excess and the developmental origins of disease: two decades of testing the hypothesis—2012 Curt Richter Award Winner. *Psychoneuroendocrinology*, 2013 38(1): p. 1–11. [PubMed: 22998948]
22. Seckl JR and Holmes MC, Mechanisms of disease: glucocorticoids, their placental metabolism and fetal ‘programming’ of adult pathophysiology. *Nat Clin Pract Endocrinol Metab*, 2007 3(6): p. 479–88. [PubMed: 17515892]
23. Matthews SG, Early programming of the hypothalamo-pituitary-adrenal axis. *Trends Endocrinol Metab*, 2002 13(9): p. 373–80. [PubMed: 12367818]
24. Charil A, et al., Prenatal stress and brain development. *Brain Res Rev*, 2010 65(1): p. 56–79. [PubMed: 20550950]
25. Kapoor A, et al., Fetal programming of hypothalamo-pituitary-adrenal function: prenatal stress and glucocorticoids. *J Physiol*, 2006 572(Pt 1): p. 31–44. [PubMed: 16469780]
26. Weinstock M, The long-term behavioural consequences of prenatal stress. *Neurosci Biobehav Rev*, 2008 32(6): p. 1073–86. [PubMed: 18423592]
- 27**. Ishimoto H and Jaffe RB, Development and function of the human fetal adrenal cortex: a key component in the feto-placental unit. *Endocr Rev*, 2011 32(3): p. 317–55.
Comprehensive review of fetal adrenal development
[PubMed: 21051591]
28. Power ML and Schulkin J, Functions of corticotropin-releasing hormone in anthropoid primates: from brain to placenta. *Am J Hum Biol*, 2006 18(4): p. 431–47. [PubMed: 16788901]
29. Chrousos GP, Torpy DJ, and Gold PW, Interactions between the hypothalamic-pituitary-adrenal axis and the female reproductive system: clinical implications. *Ann Intern Med*, 1998 129(3): p. 229–40. [PubMed: 9696732]
30. Smith SM and Vale WW, The role of the hypothalamic-pituitary-adrenal axis in neuroendocrine responses to stress. *Dialogues Clin Neurosci*, 2006 8(4): p. 383–95. [PubMed: 17290797]
31. Aguilera G and Liu Y, The molecular physiology of CRH neurons. *Front Neuroendocrinol*, 2012 33(1): p. 67–84. [PubMed: 21871477]
32. Reul JM and de Kloet ER, Two receptor systems for corticosterone in rat brain: microdistribution and differential occupation. *Endocrinology*, 1985 117(6): p. 2505–11. [PubMed: 2998738]
33. Reul JM and de Kloet ER, Anatomical resolution of two types of corticosterone receptor sites in rat brain with in vitro autoradiography and computerized image analysis. *J Steroid Biochem*, 1986 24(1): p. 269–72. [PubMed: 3702410]
34. Young EA, et al., The role of mineralocorticoid receptors in hypothalamic-pituitary-adrenal axis regulation in humans. *J Clin Endocrinol Metab*, 1998 83(9): p. 3339–45. [PubMed: 9745451]

35. Sapolsky RM, Romero LM, and Munck AU, How do glucocorticoids influence stress responses? Integrating permissive, suppressive, stimulatory, and preparative actions. *Endocr Rev*, 2000 21(1): p. 55–89. [PubMed: 10696570]
36. Tsigos C and Chrousos GP, Hypothalamic-pituitary-adrenal axis, neuroendocrine factors and stress. *J Psychosom Res*, 2002 53(4): p. 865–71. [PubMed: 12377295]
37. de Kloet ER, Joels M, and Holsboer F, Stress and the brain: from adaptation to disease. *Nat Rev Neurosci*, 2005 6(6): p. 463–75. [PubMed: 15891777]
38. Selye H, Stress and disease. *Science*, 1955 122(3171): p. 625–31. [PubMed: 13255902]
39. Selye H, Perspectives in stress research. *Perspect Biol Med*, 1959 2(4): p. 403–16. [PubMed: 13667390]
40. Anagnostis P, et al., The pathogenetic role of cortisol in the metabolic syndrome: A hypothesis. *Journal of Clinical Endocrinology & Metabolism*, 2009 94(8): p. 2692–2701. [PubMed: 19470627]
41. Knorr U, et al., Salivary cortisol in depressed patients versus control persons: a systematic review and meta-analysis. *Psychoneuroendocrinology*, 2010 35(9): p. 1275–86. [PubMed: 20447770]
42. Lopez-Duran NL, Kovacs M, and George CJ, Hypothalamic-pituitary-adrenal axis dysregulation in depressed children and adolescents: a meta-analysis. *Psychoneuroendocrinology*, 2009 34(9): p. 1272–83. [PubMed: 19406581]
43. DeSantis AS, et al., Associations of salivary cortisol levels with inflammatory markers: The Multi-Ethnic Study of Atherosclerosis. *Psychoneuroendocrinology*, 2012 37(7): p. 1009–1018. [PubMed: 22178583]
44. Buckley TM and Schatzberg AF, Review: On the interactions of the hypothalamic-pituitary-adrenal (HPA) axis and sleep: Normal HPA axis activity and circadian rhythm, exemplary sleep disorders. *Journal of Clinical Endocrinology & Metabolism*, 2005 90(5): p. 3106–3114. [PubMed: 15728214]
45. Pasquali R, et al., The hypothalamic-pituitary-adrenal axis activity in obesity and the metabolic syndrome. *Ann N Y Acad Sci*, 2006 1083: p. 111–28. [PubMed: 17148736]
46. Saridjan NS, et al., The longitudinal association of the diurnal cortisol rhythm with internalizing and externalizing problems in pre-schoolers. The Generation R Study. *Psychoneuroendocrinology*, 2014 50: p. 118–29. [PubMed: 25202831]
47. Adam EK, et al., Prospective prediction of major depressive disorder from cortisol awakening responses in adolescence. *Psychoneuroendocrinology*, 2010 35(6): p. 921–31. [PubMed: 20079576]
48. Adam EK, et al., Prospective associations between the cortisol awakening response and first onsets of anxiety disorders over a six-year follow-up—2013 Curt Richter Award Winner. *Psychoneuroendocrinology*, 2014 44: p. 47–59. [PubMed: 24767619]
49. Vrshek-Schallhorn S, et al., The cortisol awakening response predicts major depression: predictive stability over a 4-year follow-up and effect of depression history. *Psychol Med*, 2013 43(3): p. 483–93. [PubMed: 22652338]
50. Goodyer IM, et al., Recent life events, cortisol, dehydroepiandrosterone and the onset of major depression in high-risk adolescents. *Br J Psychiatry*, 2000 177: p. 499–504. [PubMed: 11102323]
51. Rao U, Hammen CL, and Poland RE, Longitudinal course of adolescent depression: neuroendocrine and psychosocial predictors. *J Am Acad Child Adolesc Psychiatry*, 2010 49(2): p. 141–51. [PubMed: 20215936]
52. Harris TO, et al., Morning cortisol as a risk factor for subsequent major depressive disorder in adult women. *Br J Psychiatry*, 2000 177: p. 505–10. [PubMed: 11102324]
53. Ruttelle PL, et al., Concurrent and longitudinal associations between diurnal cortisol and body mass index across adolescence. *J Adolesc Health*, 2013 52(6): p. 731–7. [PubMed: 23402983]
54. Lupien SJ, et al., Cortisol levels during human aging predict hippocampal atrophy and memory deficits. *Nat Neurosci*, 1998 1(1): p. 69–73. [PubMed: 10195112]
55. Kumari M, et al., Association of diurnal patterns in salivary cortisol with all-cause and cardiovascular mortality: Findings from the Whitehall II Study. *Journal of Clinical Endocrinology & Metabolism*, 2011 96(5): p. 1478–1485. [PubMed: 21346074]

56. Reis FM and Petraglia F, The placenta as a neuroendocrine organ. *Front Horm Res*, 2001 27: p. 216–28. [PubMed: 11450428]
57. Sandman CA, Fetal exposure to placental corticotropin-releasing hormone (pCRH) programs developmental trajectories. *Peptides*, 2015 72: p. 145–53. [PubMed: 25841879]
- 58**. Mesiano S, The endocrinology of human pregnancy and fetal-placental neuroendocrine development, in Yen & Jaffe's *Reproductive Endocrinology (Seventh Edition)*, Strauss JF and Barbieri RL, Editors. 2014, W.B. Saunders: Philadelphia p. 243–271.e8.
Comprehensive review of human gestational endocrinology and fetal HPA axis development
59. King BR, Nicholson RC, and Smith R, Placental corticotrophin-releasing hormone, local effects and fetomaternal endocrinology. *Stress*, 2001 4(4): p. 219–33. [PubMed: 22432143]
60. Goland RS, et al., Biologically active corticotropin-releasing hormone in maternal and fetal plasma during pregnancy. *Am J Obstet Gynecol*, 1988 159(4): p. 884–90. [PubMed: 2845784]
61. Goland RS, et al., High levels of corticotropin-releasing hormone immunoactivity in maternal and fetal plasma during pregnancy. *J Clin Endocrinol Metab*, 1986 63(5): p. 1199–203. [PubMed: 3020078]
62. Sasaki A, et al., Immunoreactive corticotropin-releasing factor is present in human maternal plasma during the third trimester of pregnancy. *J Clin Endocrinol Metab*, 1984 59(4): p. 812–4. [PubMed: 6332823]
63. Karteris E, et al., The role of corticotropin-releasing hormone receptors in placenta and fetal membranes during human pregnancy. *Mol Genet Metab*, 2001 72(4): p. 287–96. [PubMed: 11286502]
64. Mastorakos G and Ilias I, Maternal and fetal hypothalamic-pituitary-adrenal axes during pregnancy and postpartum. *Ann N Y Acad Sci*, 2003 997: p. 136–49. [PubMed: 14644820]
65. Frim DM, et al., Characterization and gestational regulation of corticotropin-releasing hormone messenger RNA in human placenta. *J Clin Invest*, 1988 82(1): p. 287–92. [PubMed: 3260606]
66. Sandman CA, et al., Elevated maternal cortisol early in pregnancy predicts third trimester levels of placental corticotropin releasing hormone (CRH): priming the placental clock. *Peptides*, 2006 27(6): p. 1457–63. [PubMed: 16309788]
67. Lowry PJ, Corticotropin-releasing factor and its binding protein in human plasma. *Ciba Found Symp*, 1993 172: p. 108–15; discussion 115–28. [PubMed: 8387905]
68. Sasaki A, Shinkawa O, and Yoshinaga K, Placental corticotropin-releasing hormone may be a stimulator of maternal pituitary adrenocorticotrophic hormone secretion in humans. *J Clin Invest*, 1989 84(6): p. 1997–2001. [PubMed: 2556451]
69. Wadhwa PD, et al., Placental CRH modulates maternal pituitary adrenal function in human pregnancy. *Ann N Y Acad Sci*, 1997 814: p. 276–81. [PubMed: 9160977]
70. Robinson BG, et al., Glucocorticoid stimulates expression of corticotropin-releasing hormone gene in human placenta. *Proc Natl Acad Sci U S A*, 1988 85(14): p. 5244–8. [PubMed: 2839838]
71. Goland RS, Jozak S, and Conwell I, Placental corticotropin-releasing hormone and the hypercortisolism of pregnancy. *Am J Obstet Gynecol*, 1994 171(5): p. 1287–91. [PubMed: 7977536]
72. Glynn LM, et al., Pattern of perceived stress and anxiety in pregnancy predicts preterm birth. *Health Psychol*, 2008 27(1): p. 43–51. [PubMed: 18230013]
73. Glynn LM, et al., Pregnancy affects appraisal of negative life events. *J Psychosom Res*, 2004 56(1): p. 47–52. [PubMed: 14987963]
74. Glynn LM, et al., When stress happens matters: effects of earthquake timing on stress responsivity in pregnancy. *Am J Obstet Gynecol*, 2001 184(4): p. 637–42. [PubMed: 11262465]
75. Kammerer M, et al., Pregnant women become insensitive to cold stress. *BMC Pregnancy Childbirth*, 2002 2(1): p. 8. [PubMed: 12437774]
76. Schulte HM, Weisner D, and Allolio B, The corticotrophin releasing hormone test in late pregnancy: lack of adrenocorticotrophin and cortisol response. *Clin Endocrinol (Oxf)*, 1990 33(1): p. 99–106. [PubMed: 2169361]

77. Entringer S, et al., Attenuation of maternal psychophysiological stress responses and the maternal cortisol awakening response over the course of human pregnancy. *Stress*, 2010 13(3): p. 258–68. [PubMed: 20067400]
78. de Weerth C and Buitelaar JK, Physiological stress reactivity in human pregnancy--a review. *Neurosci Biobehav Rev*, 2005 29(2): p. 295–312. [PubMed: 15811500]
79. Slattery DA and Neumann ID, No stress please! Mechanisms of stress hypo-responsiveness of the maternal brain. *J Physiol*, 2008 586(2): p. 377–85. [PubMed: 17974588]
80. Glynn LM and Sandman CA, Prenatal origins of neurological development: A critical period for fetus and mother. *Current Directions in Psychological Science*, 2011 20(6): p. 384–389.
81. Wood CE and Walker CD, Fetal and neonatal HPA axis. *Compr Physiol*, 2015 6(1): p. 33–62. [PubMed: 26756626]
82. Koutcherov Y, et al., Organization of human hypothalamus in fetal development. *J Comp Neurol*, 2002 446(4): p. 301–24. [PubMed: 11954031]
83. Nieuwenhuys R, Voogd J & Van Huijzen C, The human central nervous system: A synopsis and atlas. 2008, New York: Springer.
84. Musumeci G, et al., A journey through the pituitary gland: Development, structure and function, with emphasis on embryo-foetal and later development. *Acta Histochem*, 2015 117(4–5): p. 355–66. [PubMed: 25858531]
85. Kelberman D, et al., Genetic regulation of pituitary gland development in human and mouse. *Endocr Rev*, 2009 30(7): p. 790–829. [PubMed: 19837867]
86. Sheng HZ and Westphal H, Early steps in pituitary organogenesis. *Trends Genet*, 1999 15(6): p. 236–40. [PubMed: 10354584]
87. Ikeda H, et al., The development and morphogenesis of the human pituitary gland. *Anat Embryol (Berl)*, 1988 178(4): p. 327–36. [PubMed: 3177887]
88. Thliveris JA and Currie RW, Observations on the hypothalamo-hypophyseal portal vasculature in the developing human fetus. *Am J Anat*, 1980 157(4): p. 441–4. [PubMed: 7405878]
89. Ackland JF, et al., Corticotrophin-releasing factor-like immunoreactivity and bioactivity of human fetal and adult hypothalami. *J Endocrinol*, 1986 108(2): p. 171–80. [PubMed: 3485168]
90. Bresson JL, et al., Human corticoliberin hypothalamic neuroglandular system: comparative immunocytochemical study with anti-rat and anti-ovine corticotropin-releasing factor sera in the early stages of development. *Brain Res*, 1987 429(2): p. 241–6. [PubMed: 3552124]
91. Asa SL, et al., Human fetal adenohypophysis. Histologic and immunocytochemical analysis. *Neuroendocrinology*, 1986 43(3): p. 308–16. [PubMed: 3016583]
92. Goto M, et al., In humans, early cortisol biosynthesis provides a mechanism to safeguard female sexual development. *J Clin Invest*, 2006 116(4): p. 953–60. [PubMed: 16585961]
93. Blumenfeld Z and Jaffe RB, Hypophysiotropic and neuromodulatory regulation of adrenocorticotropin in the human fetal pituitary gland. *J Clin Invest*, 1986 78(1): p. 288–94. [PubMed: 3013939]
94. Gibbs DM, et al., Synthetic corticotropin-releasing factor stimulates secretion of immunoreactive beta-endorphin/beta-lipotropin and ACTH by human fetal pituitaries in vitro. *Life Sci*, 1983 32(5): p. 547–50. [PubMed: 6296594]
95. Holsti L, et al., Behavioral responses to pain are heightened after clustered care in preterm infants born between 30 and 32 weeks gestational age. *Clin J Pain*, 2006 22(9): p. 757–64. [PubMed: 17057556]
96. Hanna CE, et al., Hypothalamic pituitary adrenal function in the extremely low birth weight infant. *J Clin Endocrinol Metab*, 1993 76(2): p. 384–7. [PubMed: 8381799]
97. Hanley NA, et al., Expression of steroidogenic factor 1 and Wilms' tumour 1 during early human gonadal development and sex determination. *Mech Dev*, 1999 87(1–2): p. 175–80. [PubMed: 10495282]
98. Xing Y, et al., Development of adrenal cortex zonation. *Endocrinol Metab Clin North Am*, 2015 44(2): p. 243–74. [PubMed: 26038200]
99. Keegan CE and Hammer GD, Recent insights into organogenesis of the adrenal cortex. *Trends Endocrinol Metab*, 2002 13(5): p. 200–8. [PubMed: 12185666]

100. Challis JR, et al., The fetal placental hypothalamic-pituitary-adrenal (HPA) axis, parturition and post natal health. *Mol Cell Endocrinol*, 2001 185(1–2): p. 135–44. [PubMed: 11738803]
101. Mesiano S, Coulter CL, and Jaffe RB, Localization of cytochrome P450 cholesterol side-chain cleavage, cytochrome P450 17 alpha-hydroxylase/17, 20-lyase, and 3 beta-hydroxysteroid dehydrogenase isomerase steroidogenic enzymes in human and rhesus monkey fetal adrenal glands: reappraisal of functional zonation. *J Clin Endocrinol Metab*, 1993 77(5): p. 1184–9. [PubMed: 8077311]
102. Parker CR, Jr., et al., Immunohistochemical evaluation of the cellular localization and ontogeny of 3 beta-hydroxysteroid dehydrogenase/delta 5–4 isomerase in the human fetal adrenal gland. *Endocr Res*, 1995 21(1–2): p. 69–80. [PubMed: 7588420]
103. Narasaka T, et al., Temporal and spatial distribution of corticosteroidogenic enzymes immunoreactivity in developing human adrenal. *Mol Cell Endocrinol*, 2001 174(1–2): p. 111–20. [PubMed: 11306177]
104. Pepe GJ and Albrecht ED, Actions of placental and fetal adrenal steroid hormones in primate pregnancy. *Endocr Rev*, 1995 16(5): p. 608–48. [PubMed: 8529574]
105. Beitins IZ, et al., The metabolic clearance rate, blood production, interconversion and transplacental passage of cortisol and cortisone in pregnancy near term. *Pediatr Res*, 1973 7(5): p. 509–19. [PubMed: 4704743]
106. Benediktsson R, et al., Placental 11 beta-hydroxysteroid dehydrogenase: a key regulator of fetal glucocorticoid exposure. *Clin Endocrinol (Oxf)*, 1997 46(2): p. 161–6. [PubMed: 9135697]
107. Schoof E, et al., Course of placental 11beta-hydroxysteroid dehydrogenase type 2 and 15-hydroxyprostaglandin dehydrogenase mRNA expression during human gestation. *Eur J Endocrinol*, 2001 145(2): p. 187–92. [PubMed: 11454515]
108. Shams M, et al., 11Beta-hydroxysteroid dehydrogenase type 2 in human pregnancy and reduced expression in intrauterine growth restriction. *Hum Reprod*, 1998 13(4): p. 799–804. [PubMed: 9619527]
109. McTernan CL, et al., Reduced placental 11beta-hydroxysteroid dehydrogenase type 2 mRNA levels in human pregnancies complicated by intrauterine growth restriction: an analysis of possible mechanisms. *J Clin Endocrinol Metab*, 2001 86(10): p. 4979–83. [PubMed: 11600574]
110. Osinski PA, Steroid 11beta-ol dehydrogenase in human placenta. *Nature*, 1960 187: p. 777. [PubMed: 14429221]
111. Lockwood CJ, et al., Corticotropin-releasing hormone and related pituitary-adrenal axis hormones in fetal and maternal blood during the second half of pregnancy. *J Perinat Med*, 1996 24(3): p. 243–51. [PubMed: 8827573]
112. Murphy BE, Human fetal serum cortisol levels related to gestational age: evidence of a midgestational fall and a steep late gestational rise, independent of sex or mode of delivery. *Am J Obstet Gynecol*, 1982 144(3): p. 276–82. [PubMed: 7124842]
113. Murphy BE, Human fetal serum cortisol levels at delivery: a review. *Endocr Rev*, 1983 4(2): p. 150–4. [PubMed: 6345146]
114. Winters AJ, et al., Plasma ACTH levels in the human fetus and neonate as related to age and parturition. *J Clin Endocrinol Metab*, 1974 39(2): p. 269–73. [PubMed: 4371228]
115. Smith R, et al., Corticotropin-releasing hormone directly and preferentially stimulates dehydroepiandrosterone sulfate secretion by human fetal adrenal cortical cells. *J Clin Endocrinol Metab*, 1998 83(8): p. 2916–20. [PubMed: 9709969]
116. Karteris E, et al., Expression and coupling characteristics of the CRH and orexin type 2 receptors in human fetal adrenals. *J Clin Endocrinol Metab*, 2001 86(9): p. 4512–9. [PubMed: 11549701]
117. Rehman KS, et al., The regulation of adrenocorticotrophic hormone receptor by corticotropin-releasing hormone in human fetal adrenal definitive/transitional zone cells. *Reprod Sci*, 2007 14(6): p. 578–87. [PubMed: 17959886]
118. Sirianni R, et al., Corticotropin-releasing hormone directly stimulates cortisol and the cortisol biosynthetic pathway in human fetal adrenal cells. *J Clin Endocrinol Metab*, 2005 90(1): p. 279–85. [PubMed: 15494460]

119. Parker CR, Jr., Stankovic AM, and Goland RS, Corticotropin-releasing hormone stimulates steroidogenesis in cultured human adrenal cells. *Mol Cell Endocrinol*, 1999 155(1–2): p. 19–25. [PubMed: 10580835]
120. Sucheston ME and Cannon MS, Development of zonular patterns in the human adrenal gland. *J Morphol*, 1968 126(4): p. 477–91. [PubMed: 5716437]
121. Murphy VE and Clifton VL, Alterations in human placental 11beta-hydroxysteroid dehydrogenase type 1 and 2 with gestational age and labour. *Placenta*, 2003 24(7): p. 739–44. [PubMed: 12852864]
122. Myatt L and Sun K, Role of fetal membranes in signaling of fetal maturation and parturition. *Int J Dev Biol*, 2010 54(2–3): p. 545–53. [PubMed: 19924634]
123. McLean M, et al., A placental clock controlling the length of human pregnancy. *Nat Med*, 1995 1(5): p. 460–3. [PubMed: 7585095]
124. Smith R and Nicholson RC, Corticotrophin releasing hormone and the timing of birth. *Front Biosci*, 2007 12: p. 912–8. [PubMed: 17127348]
125. Glynn LM and Sandman CA, Sex moderates associations between prenatal glucocorticoid exposure and human fetal neurological development. *Dev Sci*, 2012 15(5): p. 601–10. [PubMed: 22925508]
126. Davis EP, et al., Prenatal maternal cortisol concentrations predict neurodevelopment in middle childhood. *Psychoneuroendocrinology*, 2017 75: p. 56–63. [PubMed: 27771566]
127. Buss C, et al., Maternal cortisol over the course of pregnancy and subsequent child amygdala and hippocampus volumes and affective problems. *Proc Natl Acad Sci U S A*, 2012 109(20): p. E1312–9. [PubMed: 22529357]
- 128**. Davis EP, et al., Prenatal maternal stress programs infant stress regulation. *J Child Psychol Psychiatry*, 2011 52(2): p. 119–29.
- Documents association between prenatal maternal cortisol levels and neonatal stress response
- [PubMed: 20854366]
129. Davis EP and Sandman CA, The timing of prenatal exposure to maternal cortisol and psychosocial stress is associated with human infant cognitive development. *Child Dev*, 2010 81(1): p. 131–48. [PubMed: 20331658]
130. Gitau R, et al., Fetal exposure to maternal cortisol. *Lancet*, 1998 352(9129): p. 707–8. [PubMed: 9728994]
131. Gitau R, et al., Fetal hypothalamic-pituitary-adrenal stress responses to invasive procedures are independent of maternal responses. *J Clin Endocrinol Metab*, 2001 86(1): p. 104–9. [PubMed: 11231985]
132. Murphy BE, et al., Conversion of maternal cortisol to cortisone during placental transfer to the human fetus. *Am J Obstet Gynecol*, 1974 118(4): p. 538–41. [PubMed: 4812574]
133. Sarkar P, et al., Ontogeny of foetal exposure to maternal cortisol using midtrimester amniotic fluid as a biomarker. *Clin Endocrinol (Oxf)*, 2007 66(5): p. 636–40. [PubMed: 17492950]
134. Smith AK, et al., Predictors of neonatal hypothalamic-pituitary-adrenal axis activity at delivery. *Clin Endocrinol (Oxf)*, 2011 75(1): p. 90–5. [PubMed: 21521269]
135. Predine J, et al., Unbound cortisol in umbilical cord plasma and maternal plasma: a reinvestigation. *Am J Obstet Gynecol*, 1979 135(8): p. 1104–8. [PubMed: 517594]
136. Sarkar S, et al., Inhibition of placental 11beta-hydroxysteroid dehydrogenase type 2 by catecholamines via alpha-adrenergic signaling. *Am J Physiol Regul Integr Comp Physiol*, 2001 281(6): p. R1966–74. [PubMed: 11705783]
137. Johnstone JF, et al., The effects of chorioamnionitis and betamethasone on 11beta hydroxysteroid dehydrogenase types 1 and 2 and the glucocorticoid receptor in preterm human placenta. *J Soc Gynecol Investig*, 2005 12(4): p. 238–45.
138. Kossintseva I, et al., Proinflammatory cytokines inhibit human placental 11beta-hydroxysteroid dehydrogenase type 2 activity through Ca²⁺ and cAMP pathways. *Am J Physiol Endocrinol Metab*, 2006 290(2): p. E282–8. [PubMed: 16174654]

139. Alfaidy N, et al., Oxygen regulation of placental 11 beta-hydroxysteroid dehydrogenase 2: physiological and pathological implications. *J Clin Endocrinol Metab*, 2002 87(10): p. 4797–805. [PubMed: 12364476]
140. O'Donnell KJ, et al., Maternal prenatal anxiety and downregulation of placental 11beta-HSD2. *Psychoneuroendocrinology*, 2012 37(6): p. 818–26. [PubMed: 22001010]
141. Glover V, et al., Association between maternal and amniotic fluid cortisol is moderated by maternal anxiety. *Psychoneuroendocrinology*, 2009 34(3): p. 430–5. [PubMed: 19019559]
142. Seckl JR and Meaney MJ, Glucocorticoid “programming” and PTSD risk. *Ann N Y Acad Sci*, 2006 1071: p. 351–78. [PubMed: 16891583]
143. Herman JP and Cullinan WE, Neurocircuitry of stress: central control of the hypothalamo-pituitary-adrenocortical axis. *Trends Neurosci*, 1997 20(2): p. 78–84. [PubMed: 9023876]
144. Avishai-Eliner S, et al., Stressed-out, or in (utero)? *Trends Neurosci*, 2002 25(10): p. 518–24. [PubMed: 12220880]
145. Salaria S, et al., Microarray analysis of cultured human brain aggregates following cortisol exposure: implications for cellular functions relevant to mood disorders. *Neurobiol Dis*, 2006 23(3): p. 630–6. [PubMed: 16844382]
146. Meaney MJ, Szyf M, and Seckl JR, Epigenetic mechanisms of perinatal programming of hypothalamic-pituitary-adrenal function and health. *Trends Mol Med*, 2007 13(7): p. 269–77. [PubMed: 17544850]
147. Noorlander CW, et al., Ontogeny of hippocampal corticosteroid receptors: effects of antenatal glucocorticoids in human and mouse. *J Comp Neurol*, 2006 499(6): p. 924–32. [PubMed: 17072842]
148. Welberg LA, Seckl JR, and Holmes MC, Prenatal glucocorticoid programming of brain corticosteroid receptors and corticotrophin-releasing hormone: possible implications for behaviour. *Neuroscience*, 2001 104(1): p. 71–9. [PubMed: 11311532]
149. Henry C, et al., Prenatal stress increases the hypothalamo-pituitary-adrenal axis response in young and adult rats. *J Neuroendocrinol*, 1994 6(3): p. 341–5. [PubMed: 7920600]
150. Levitt NS, et al., Dexamethasone in the last week of pregnancy attenuates hippocampal glucocorticoid receptor gene expression and elevates blood pressure in the adult offspring in the rat. *Neuroendocrinology*, 1996 64(6): p. 412–8. [PubMed: 8990073]
151. de Kloet ER, From receptor balance to rational glucocorticoid therapy. *Endocrinology*, 2014 155(8): p. 2754–69. [PubMed: 24828611]
152. Glynn LM, et al., Ethnic differences in adrenocorticotrophic hormone, cortisol and corticotropin-releasing hormone during pregnancy. *Peptides*, 2007 28(6): p. 1155–61. [PubMed: 17537545]
153. Petraglia F, et al., Mechanism of action of interleukin-1 beta in increasing corticotropin-releasing factor and adrenocorticotropin hormone release from cultured human placental cells. *Am J Obstet Gynecol*, 1990 163(4 Pt 1): p. 1307–12. [PubMed: 2171341]
154. Petraglia F, Sutton S, and Vale W, Neurotransmitters and peptides modulate the release of immunoreactive corticotropin-releasing factor from cultured human placental cells. *Am J Obstet Gynecol*, 1989 160(1): p. 247–51. [PubMed: 2563197]
155. Herrmann TS, et al., Prolonged periods without food intake during pregnancy increase risk for elevated maternal corticotropin-releasing hormone concentrations. *Am J Obstet Gynecol*, 2001 185(2): p. 403–12. [PubMed: 11518900]
156. Giles WB, et al., Abnormal umbilical artery Doppler waveforms and cord blood corticotropin-releasing hormone. *Obstet Gynecol*, 1996 87(1): p. 107–11. [PubMed: 8532243]
157. Torricelli M, et al., Changes in placental CRH, urocortins, and CRH-receptor mRNA expression associated with preterm delivery and chorioamnionitis. *J Clin Endocrinol Metab*, 2011 96(2): p. 534–40. [PubMed: 21106714]
158. Mancuso RA, et al., Maternal prenatal anxiety and corticotropin-releasing hormone associated with timing of delivery. *Psychosom Med*, 2004 66(5): p. 762–9. [PubMed: 15385704]
159. Hobel CJ, et al., Maternal plasma corticotropin-releasing hormone associated with stress at 20 weeks' gestation in pregnancies ending in preterm delivery. *Am J Obstet Gynecol*, 1999 180(1 Pt 3): p. S257–63. [PubMed: 9914629]

160. Rich-Edwards JW, et al., Elevated midpregnancy corticotropin-releasing hormone is associated with prenatal, but not postpartum, maternal depression. *J Clin Endocrinol Metab*, 2008 93(5): p. 1946–51. [PubMed: 18303075]
161. Yim IS, et al., Risk of postpartum depressive symptoms with elevated corticotropin-releasing hormone in human pregnancy. *Arch Gen Psychiatry*, 2009 66(2): p. 162–9. [PubMed: 19188538]
162. Glynn LM and Sandman CA, Evaluation of the association between placental corticotrophin-releasing hormone and postpartum depressive symptoms. *Psychosom Med*, 2014 76(5): p. 355–62. [PubMed: 24915294]
163. Hahn-Holbrook J, et al., Placental corticotropin-releasing hormone mediates the association between prenatal social support and postpartum depression. *Clin Psychol Sci*, 2013 1(3): p. 253–264. [PubMed: 23997996]
164. Kastin AJ and Akerstrom V, Differential interactions of urocortin/corticotropin-releasing hormone peptides with the blood-brain barrier. *Neuroendocrinology*, 2002 75(6): p. 367–74. [PubMed: 12065889]
165. Koutmani Y, et al., Corticotropin-releasing hormone exerts direct effects on neuronal progenitor cells: implications for neuroprotection. *Mol Psychiatry*, 2013 18(3): p. 300–7. [PubMed: 23380766]
166. Ellman LM, et al., Timing of fetal exposure to stress hormones: effects on newborn physical and neuromuscular maturation. *Dev Psychobiol*, 2008 50(3): p. 232–41. [PubMed: 18335490]
167. Class QA, et al., Low levels of corticotropin-releasing hormone during early pregnancy are associated with precocious maturation of the human fetus. *Dev Neurosci*, 2008 30(6): p. 419–26. [PubMed: 19127063]
168. Sandman CA, et al., Maternal corticotropin-releasing hormone and habituation in the human fetus. *Dev Psychobiol*, 1999 34(3): p. 163–73. [PubMed: 10204092]
169. Davis EP, et al., Corticotropin-releasing hormone during pregnancy is associated with infant temperament. *Dev Neurosci*, 2005 27(5): p. 299–305. [PubMed: 16137987]
170. Howland MA, et al., Fetal exposure to placental corticotropin-releasing hormone is associated with child self-reported internalizing symptoms. *Psychoneuroendocrinology*, 2016 67: p. 10–7. [PubMed: 26855003]
171. Sandman CA, Glynn LM, and Davis EP, Neurobehavioral consequences of fetal exposure to gestational stress, in *Fetal development: Research on brain and behavior, environmental influences, and emerging technologies*, Reissland N and Kisilevsky BS, Editors. 2016, Springer International Publishing: Cham p. 229–265.
172. Phillips DI and Jones A, Fetal programming of autonomic and HPA function: do people who were small babies have enhanced stress responses? *J Physiol*, 2006 572(Pt 1): p. 45–50. [PubMed: 16455684]
173. Lee J, et al., Preterm delivery as a predictor of diurnal cortisol profiles in adulthood: evidence from Cebu, Philippines. *Am J Hum Biol*, 2014 26(5): p. 598–602. [PubMed: 24898414]
174. Lazarus RS and Folkman S, *Stress, appraisal, and coping*. 1984, New York: Springer.
175. Kirschbaum C and Hellhammer DH, Salivary cortisol, in *Encyclopedia of stress*, Fink G, Editor. 2000, Academic Press: New York p. 379–383.
176. Levine A, et al., Measuring cortisol in human psychobiological studies. *Physiol Behav*, 2007 90(1): p. 43–53. [PubMed: 17055006]
177. Miller R, et al., The CIRCORT database: Reference ranges and seasonal changes in diurnal salivary cortisol derived from a meta-dataset comprised of 15 field studies. *Psychoneuroendocrinology*, 2016 73: p. 16–23. [PubMed: 27448524]
178. Marcus S, et al., Depressive symptoms during pregnancy: impact on neuroendocrine and neonatal outcomes. *Infant Behav Dev*, 2011 34(1): p. 26–34. [PubMed: 21035873]
179. Lundy BL, et al., Prenatal depression effects on neonates. *Infant Behavior and Development*, 1999 22(1): p. 119–129.
180. Field T, et al., Prenatal depression effects on the fetus and the newborn. *Infant Behavior and Development*, 2004 27(2): p. 216–229.
- 181**. Stroud LR, et al., Prenatal major depressive disorder, placenta glucocorticoid and serotonergic signaling, and infant cortisol response. *Psychosom Med*, 2016 78(9): p. 979–990.

- Documents link between prenatal maternal psychosocial stress and infant cortisol response, as moderated by placental 11 β -HSD-2 methylation
- [PubMed: 27763986]
182. Tollenaar MS, et al., Maternal prenatal stress and cortisol reactivity to stressors in human infants. *Stress*, 2011 14(1): p. 53–65. [PubMed: 20666659]
183. Gunnar MR and Vazquez DM, Low cortisol and a flattening of expected daytime rhythm: potential indices of risk in human development. *Dev Psychopathol*, 2001 13(3): p. 515–38. [PubMed: 11523846]
184. Braithwaite EC, Murphy SE, and Ramchandani PG, Effects of prenatal depressive symptoms on maternal and infant cortisol reactivity. *Arch Womens Ment Health*, 2016 19(4): p. 581–90. [PubMed: 26940835]
185. Rash JA, et al., Developmental origins of infant stress reactivity profiles: A multi-system approach. *Dev Psychobiol*, 2016 58(5): p. 578–99. [PubMed: 26956370]
186. Grant KA, et al., Maternal prenatal anxiety, postnatal caregiving and infants' cortisol responses to the still-face procedure. *Dev Psychobiol*, 2009 51(8): p. 625–37. [PubMed: 19739133]
187. de Bruijn AT, et al., Prenatal maternal emotional complaints are associated with cortisol responses in toddler and preschool aged girls. *Dev Psychobiol*, 2009 51(7): p. 553–63. [PubMed: 19688770]
188. Gutteling BM, de Weerth C, and Buitelaar JK, Maternal prenatal stress and 4–6 year old children's salivary cortisol concentrations pre- and post-vaccination. *Stress*, 2004 7(4): p. 257–60. [PubMed: 16019591]
189. Gutteling BM, de Weerth C, and Buitelaar JK, Prenatal stress and children's cortisol reaction to the first day of school. *Psychoneuroendocrinology*, 2005 30(6): p. 541–9. [PubMed: 15808923]
190. Martinez-Torteya C, et al., The influence of prenatal intimate partner violence exposure on hypothalamic-pituitary-adrenal axis reactivity and childhood internalizing and externalizing symptoms. *Dev Psychopathol*, 2016 28(1): p. 55–72. [PubMed: 25851078]
191. O'Connor TG, et al., Prenatal anxiety predicts individual differences in cortisol in pre-adolescent children. *Biol Psychiatry*, 2005 58(3): p. 211–7. [PubMed: 16084841]
- 192**. O'Donnell KJ, et al., Prenatal maternal mood is associated with altered diurnal cortisol in adolescence. *Psychoneuroendocrinology*, 2013 38(9): p. 1630–8.
- Demonstrates link between prenatal maternal psychosocial stress and altered diurnal cortisol output in adolescence
- [PubMed: 23433748]
193. Van den Bergh BR, et al., Antenatal maternal anxiety is related to HPA-axis dysregulation and self-reported depressive symptoms in adolescence: a prospective study on the fetal origins of depressed mood. *Neuropsychopharmacology*, 2008 33(3): p. 536–45. [PubMed: 17507916]
194. Huizink AC, et al., Chernobyl exposure as stressor during pregnancy and hormone levels in adolescent offspring. *J Epidemiol Community Health*, 2008 62(4): p. e5. [PubMed: 18365332]
195. Entringer S, et al., Prenatal exposure to maternal psychosocial stress and HPA axis regulation in young adults. *Horm Behav*, 2009 55(2): p. 292–8. [PubMed: 19084531]
196. Practice A.C.o.O., ACOG Committee Opinion No. 475: antenatal corticosteroid therapy for fetal maturation. *Obstet Gynecol*, 2011 117(2 Pt 1): p. 422–4. [PubMed: 21252775]
197. Crowther CA, et al., Repeat doses of prenatal corticosteroids for women at risk of preterm birth for improving neonatal health outcomes. *Cochrane Database Syst Rev*, 2015(7): p. CD003935. [PubMed: 26142898]
198. Kajantie E, et al., Circulating glucocorticoid bioactivity in the preterm newborn after antenatal betamethasone treatment. *J Clin Endocrinol Metab*, 2004 89(8): p. 3999–4003. [PubMed: 15292340]
199. Tegethoff M, Pryce C, and Meinschmidt G, Effects of intrauterine exposure to synthetic glucocorticoids on fetal, newborn, and infant hypothalamic-pituitary-adrenal axis function in humans: a systematic review. *Endocr Rev*, 2009 30(7): p. 753–89. [PubMed: 19837868]

200. Davis EP, et al., Effects of prenatal betamethasone exposure on regulation of stress physiology in healthy premature infants. *Psychoneuroendocrinology*, 2004 29(8): p. 1028–36. [PubMed: 15219654]
201. Davis EP, et al., Antenatal betamethasone treatment has a persisting influence on infant HPA axis regulation. *J Perinatol*, 2006 26(3): p. 147–53. [PubMed: 16467857]
202. Schaffer L, et al., Antenatal betamethasone administration alters stress physiology in healthy neonates. *Obstet Gynecol*, 2009 113(5): p. 1082–8. [PubMed: 19384124]
203. Ashwood PJ, et al., Neonatal adrenal function after repeat dose prenatal corticosteroids: a randomized controlled trial. *Am J Obstet Gynecol*, 2006 194(3): p. 861–7. [PubMed: 16522426]
204. Waffarn F and Davis EP, Effects of antenatal corticosteroids on the hypothalamic-pituitary-adrenocortical axis of the fetus and newborn: experimental findings and clinical considerations. *Am J Obstet Gynecol*, 2012 207(6): p. 446–54. [PubMed: 22840973]
205. Davis EP, Waffarn F, and Sandman CA, Prenatal treatment with glucocorticoids sensitizes the hpa axis response to stress among full-term infants. *Dev Psychobiol*, 2011 53(2): p. 175–83. [PubMed: 21298632]
206. Alexander N, et al., Impact of antenatal synthetic glucocorticoid exposure on endocrine stress reactivity in term-born children. *J Clin Endocrinol Metab*, 2012 97(10): p. 3538–44. [PubMed: 22869608]
207. Ter Wolbeek M, et al., Neonatal glucocorticoid treatment: long-term effects on the hypothalamus-pituitary-adrenal axis, immune system, and problem behavior in 14–17 year old adolescents. *Brain Behav Immun*, 2015 45: p. 128–38. [PubMed: 25449580]
208. Edelmann MN, et al., Antenatal glucocorticoid treatment is associated with diurnal cortisol regulation in term-born children. *Psychoneuroendocrinology*, 2016 72: p. 106–12. [PubMed: 27393907]
209. Egliston KA, McMahon C, and Austin MP, Stress in pregnancy and infant HPA axis function: conceptual and methodological issues relating to the use of salivary cortisol as an outcome measure. *Psychoneuroendocrinology*, 2007 32(1): p. 1–13. [PubMed: 17123741]
210. Gunnar M and Quevedo K, The neurobiology of stress and development. *Annu Rev Psychol*, 2007 58: p. 145–73. [PubMed: 16903808]
211. Gunnar MR, et al., Dampening of adrenocortical responses during infancy: normative changes and individual differences. *Child Dev*, 1996 67(3): p. 877–89. [PubMed: 8706532]
212. Lewis M and Ramsay D, Stability and change in cortisol and behavioral response to stress during the first 18 months of life. *Dev Psychobiol*, 1995 28(8): p. 419–28. [PubMed: 8582530]
213. Lewis M and Ramsay DS, Developmental change in infants' responses to stress. *Child Dev*, 1995 66(3): p. 657–70. [PubMed: 7789193]
214. Netherton C, et al., Salivary cortisol and dehydroepiandrosterone in relation to puberty and gender. *Psychoneuroendocrinology*, 2004 29(2): p. 125–40. [PubMed: 14604596]
215. Oskis A, et al., Diurnal patterns of salivary cortisol across the adolescent period in healthy females. *Psychoneuroendocrinology*, 2009 34(3): p. 307–16. [PubMed: 18952383]
216. Fries E, et al., A new view on hypocortisolism. *Psychoneuroendocrinology*, 2005 30(10): p. 1010–6. [PubMed: 15950390]
217. Heim C, Ehler U, and Hellhammer DH, The potential role of hypocortisolism in the pathophysiology of stress-related bodily disorders. *Psychoneuroendocrinology*, 2000 25(1): p. 1–35. [PubMed: 10633533]
218. Seth S, Lewis AJ, and Galbally M, Perinatal maternal depression and cortisol function in pregnancy and the postpartum period: a systematic literature review. *BMC Pregnancy Childbirth*, 2016 16(1): p. 124. [PubMed: 27245670]
219. Giesbrecht GF, et al., Advancing gestation does not attenuate biobehavioural coherence between psychological distress and cortisol. *Biol Psychol*, 2013 93(1): p. 45–51. [PubMed: 23410761]
220. Giesbrecht GF, et al., Psychological distress and salivary cortisol covary within persons during pregnancy. *Psychoneuroendocrinology*, 2012 37(2): p. 270–9. [PubMed: 21752548]
221. Kane HS, et al., Pregnancy anxiety and prenatal cortisol trajectories. *Biol Psychol*, 2014 100: p. 13–9. [PubMed: 24769094]

222. Kalra S, et al., The relationship between stress and hair cortisol in healthy pregnant women. *Clin Invest Med*, 2007 30(2): p. E103–7. [PubMed: 17716540]
223. Coussons-Read ME, Okun ML, and Nettles CD, Psychosocial stress increases inflammatory markers and alters cytokine production across pregnancy. *Brain Behav Immun*, 2007 21(3): p. 343–50. [PubMed: 17029703]
224. Harville EW, et al., Stress and placental resistance measured by Doppler ultrasound in early and mid-pregnancy. *Ultrasound Obstet Gynecol*, 2008 32(1): p. 23–30. [PubMed: 18546420]
225. Christian LM, Effects of stress and depression on inflammatory immune parameters in pregnancy. *Am J Obstet Gynecol*, 2014 211(3): p. 275–7. [PubMed: 24956551]
226. DiPietro JA, Maternal influences on the developing fetus, in *Maternal influences on fetal neurodevelopment: Clinical and research aspects*, Zimmerman AW and Connors SL, Editors. 2010, Springer-Verlag: New York, NY p. 19–32.
227. Teixeira JM, Fisk NM, and Glover V, Association between maternal anxiety in pregnancy and increased uterine artery resistance index: cohort based study. *BMJ*, 1999 318(7177): p. 153–7. [PubMed: 9888905]
228. Sandman CA, Class QA, and Glynn LM, Neurobehavioral disorders and developmental origins of health and disease, in *The epigenome and developmental origins of health and disease*, Rosenfeld C, Editor. 2015, Elsevier: New York.
229. Matthews KA and Rodin J, Pregnancy alters blood pressure responses to psychological and physical challenge. *Psychophysiology*, 1992 29(2): p. 232–40. [PubMed: 1635966]
230. DiPietro JA, Costigan KA, and Gurewitsch ED, Maternal psychophysiological change during the second half of gestation. *Biol Psychol*, 2005 69(1): p. 23–38. [PubMed: 15740823]
- 231**. Sandman CA, Glynn LM, and Davis EP, Is there a viability-vulnerability tradeoff? Sex differences in fetal programming. *J Psychosom Res*, 2013 75(4): p. 327–35.
Review of sex differences in fetal programming
[PubMed: 24119938]
232. Clifton VL, Review: Sex and the human placenta: mediating differential strategies of fetal growth and survival. *Placenta*, 2010 31 Suppl: p. S33–9. [PubMed: 20004469]
233. Saif Z, et al., The human placenta expresses multiple glucocorticoid receptor isoforms that are altered by fetal sex, growth restriction and maternal asthma. *Placenta*, 2014 35(4): p. 260–8. [PubMed: 24559727]
234. Clifton VL and Murphy VE, Maternal asthma as a model for examining fetal sex-specific effects on maternal physiology and placental mechanisms that regulate human fetal growth. *Placenta*, 2004 25 Suppl A: p. S45–52. [PubMed: 15033307]
235. Osei-Kumah A, et al., Sex-specific differences in placental global gene expression in pregnancies complicated by asthma. *Placenta*, 2011 32(8): p. 570–8. [PubMed: 21641640]
236. Robins JC, et al., Endocrine disruptors, environmental oxygen, epigenetics and pregnancy. *Front Biosci (Elite Ed)*, 2011 3: p. 690–700. [PubMed: 21196344]
237. Jaenisch R and Bird A, Epigenetic regulation of gene expression: how the genome integrates intrinsic and environmental signals. *Nat Genet*, 2003 33 Suppl: p. 245–54. [PubMed: 12610534]
238. Palma-Gudiel H, et al., Maternal psychosocial stress during pregnancy alters the epigenetic signature of the glucocorticoid receptor gene promoter in their offspring: a meta-analysis. *Epigenetics*, 2015 10(10): p. 893–902. [PubMed: 26327302]
239. McGowan PO, et al., Epigenetic regulation of the glucocorticoid receptor in human brain associates with childhood abuse. *Nat Neurosci*, 2009 12(3): p. 342–8. [PubMed: 19234457]
240. Oberlander TF, et al., Prenatal exposure to maternal depression, neonatal methylation of human glucocorticoid receptor gene (NR3C1) and infant cortisol stress responses. *Epigenetics*, 2008 3(2): p. 97–106. [PubMed: 18536531]
241. Hompes T, et al., Investigating the influence of maternal cortisol and emotional state during pregnancy on the DNA methylation status of the glucocorticoid receptor gene (NR3C1) promoter region in cord blood. *J Psychiatr Res*, 2013 47(7): p. 880–91. [PubMed: 23566423]

242. Conradt E, et al., The roles of DNA methylation of NR3C1 and 11beta-HSD2 and exposure to maternal mood disorder in utero on newborn neurobehavior. *Epigenetics*, 2013 8(12): p. 1321–9. [PubMed: 24135662]
243. Kertes DA, et al., Prenatal maternal stress predicts methylation of genes regulating the hypothalamic-pituitary-adrenocortical system in mothers and newborns in the Democratic Republic of Congo. *Child Dev*, 2016 87(1): p. 61–72. [PubMed: 26822443]
244. Radtke KM, et al., Transgenerational impact of intimate partner violence on methylation in the promoter of the glucocorticoid receptor. *Transl Psychiatry*, 2011 1: p. e21. [PubMed: 22832523]
245. Matthews SG and Phillips DI, Minireview: transgenerational inheritance of the stress response: a new frontier in stress research. *Endocrinology*, 2010 151(1): p. 7–13. [PubMed: 19887563]
246. Diego MA, et al., Prepartum, postpartum, and chronic depression effects on newborns. *Psychiatry*, 2004 67(1): p. 63–80. [PubMed: 15139586]
- 247**. Laurent HK, Ablow JC, and Measelle J, Risky shifts: how the timing and course of mothers' depressive symptoms across the perinatal period shape their own and infant's stress response profiles. *Dev Psychopathol*, 2011 23(2): p. 521–38.
- Findings highlight the importance of considering the interactive effects of the prenatal and postnatal environments on HPA axis function
- [PubMed: 23786693]
248. Laurent HK, et al., Effects of prenatal and postnatal parent depressive symptoms on adopted child HPA regulation: independent and moderated influences. *Dev Psychol*, 2013 49(5): p. 876–86. [PubMed: 22686176]
249. Kaplan LA, Evans L, and Monk C, Effects of mothers' prenatal psychiatric status and postnatal caregiving on infant biobehavioral regulation: can prenatal programming be modified? *Early Hum Dev*, 2008 84(4): p. 249–56. [PubMed: 17761394]
250. Denver RJ, Structural and functional evolution of vertebrate neuroendocrine stress systems. *Ann N Y Acad Sci*, 2009 1163: p. 1–16. [PubMed: 19456324]
251. Crespi EJ and Denver RJ, Ancient origins of human developmental plasticity. *Am J Hum Biol*, 2005 17(1): p. 44–54. [PubMed: 15611964]
252. Hanson MA and Gluckman PD, Early developmental conditioning of later health and disease: physiology or pathophysiology? *Physiol Rev*, 2014 94(4): p. 1027–76. [PubMed: 25287859]
253. Nesse RM, Bhatnagar S, and Young EA, Evolutionary origins and functions of the stress response, in *Encyclopedia of Stress*. 2010, Elsevier p. 965–970.

8. Key issues

- The developmental origins of disease or fetal programming model predicts that prenatal experiences have life-long consequences for physical and psychological health.
- The hypothalamic-pituitary-adrenal (HPA) axis mobilizes the body's physical and psychological resources in response to stress and regulates many homeostatic systems. Programming of the developing fetal HPA axis is proposed as a primary mechanism by which early experiences are linked to later disease risk.
- The placenta is largely responsible for the massive changes that occur in both the maternal and developing fetal stress systems during the prenatal period. An integrated maternal-placental-fetal steroidogenic unit regulates the prenatal endocrine milieu.
- The precise mechanisms by which prenatal stressors may shape the nascent fetal HPA axis are not fully understood. In addition to cortisol, placental CRH is a promising candidate, because it is a signal that integrates a variety of stressors and appears to directly influence fetal pituitary-adrenal activity.
- Prospective, longitudinal investigations have provided evidence that elevations in maternal prenatal psychological stress and cortisol are associated with alterations in HPA axis functioning, reflected in diurnal rhythms and responses to stress. Findings are observed in the neonate, infant, child, adolescent, and adult.
- Prenatal stress is associated with both hyperactivity or hypoactivity in HPA axis functioning. It is also plausible that these differential effects reflect meaningful developmental patterns.
- Several factors may moderate the effects of prenatal stress on HPA axis function, including the time of gestation at which the stressor occurs and the sex of the fetus.
- An emerging literature suggests that epigenetic changes in HPA axis genes may mediate the effects of prenatal stress on fetal HPA axis development and function.
- The effects of prenatal stress may be amplified or attenuated as a function of the postnatal environment. Alternatively, the predictive adaptive response hypothesis posits that developmental adjustments made in response to prenatal stress are adaptive if there is a match between the prenatal and postnatal environments.

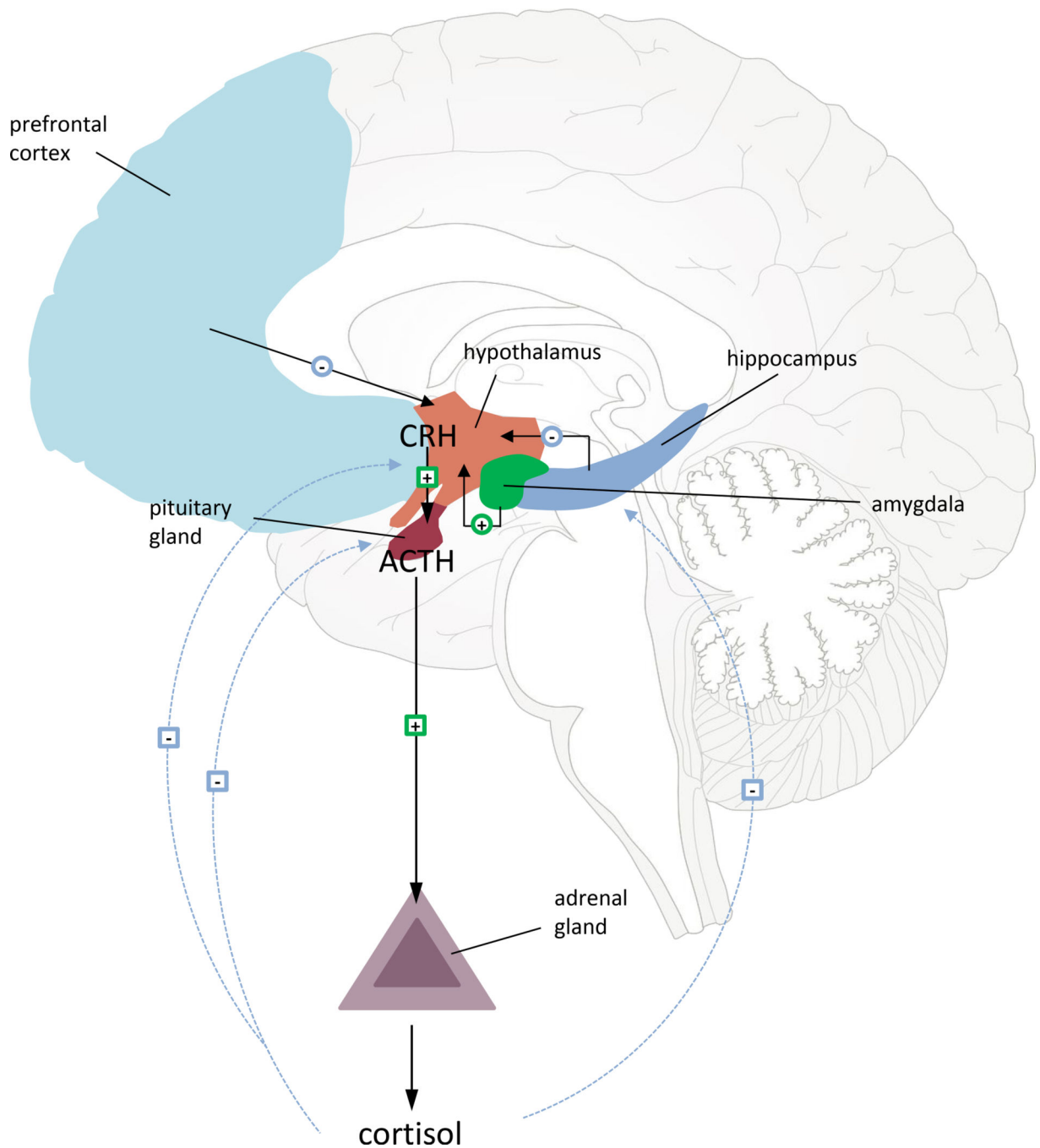


Figure 1.

Schematic representation of the hypothalamic-pituitary-adrenal (HPA) axis. In response to stress, corticotropin-releasing hormone (CRH) is synthesized in the paraventricular nucleus (PVN) of the hypothalamus and released into the hypophyseal portal blood. CRH binds to its receptors on pituitary corticotropes, stimulating the release of adrenocorticotropic hormone (ACTH). Circulating ACTH binds to its receptors in the adrenal cortex and stimulates the release of cortisol, which mobilizes body systems to respond to the stressor. Elevated circulating cortisol inhibits further HPA axis activity (blue squares) by binding to its two

receptor types, glucocorticoid receptors (GRs) and mineralocorticoid receptors (GRs), at the level of the hypothalamus, pituitary, and hippocampus. CRH-producing neurons in the PVN of the hypothalamus are innervated by afferent projections from multiple brain regions (blue and green circles), including the amygdala, which provides excitatory input, and the prefrontal cortex and hippocampus, which provide inhibitory input.

ACTH: Adrenocorticotrophic hormone; CRH: Corticotropin-releasing hormone; GR: glucocorticoid receptor; MR: mineralocorticoid receptor; PVN: paraventricular nucleus

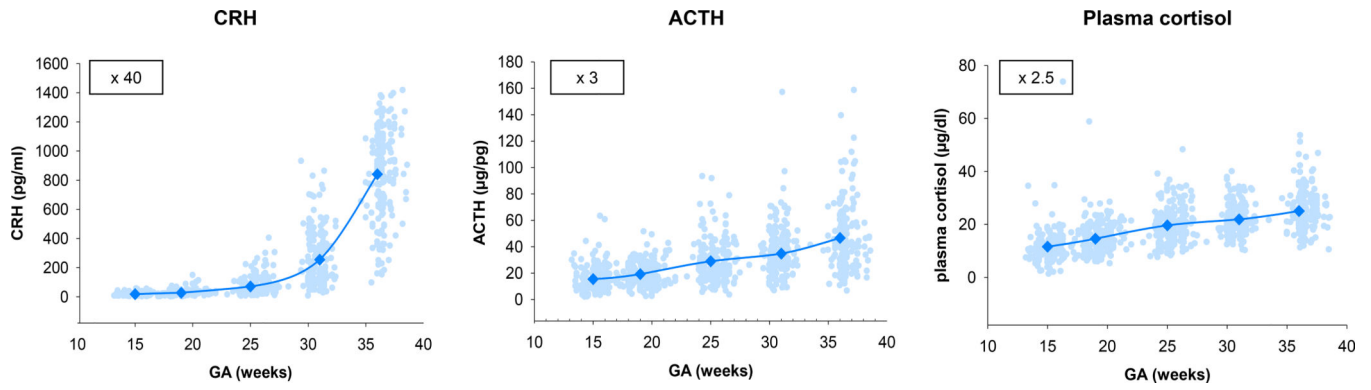


Figure 2. Increases in hypothalamic-pituitary-adrenal and placental hormones in maternal circulation over gestation. Points represent mean levels of these hormones at each gestational interval. ACTH: Adrenocorticotrophic hormone; CRH: Corticotropin-releasing hormone; GA: Gestational age

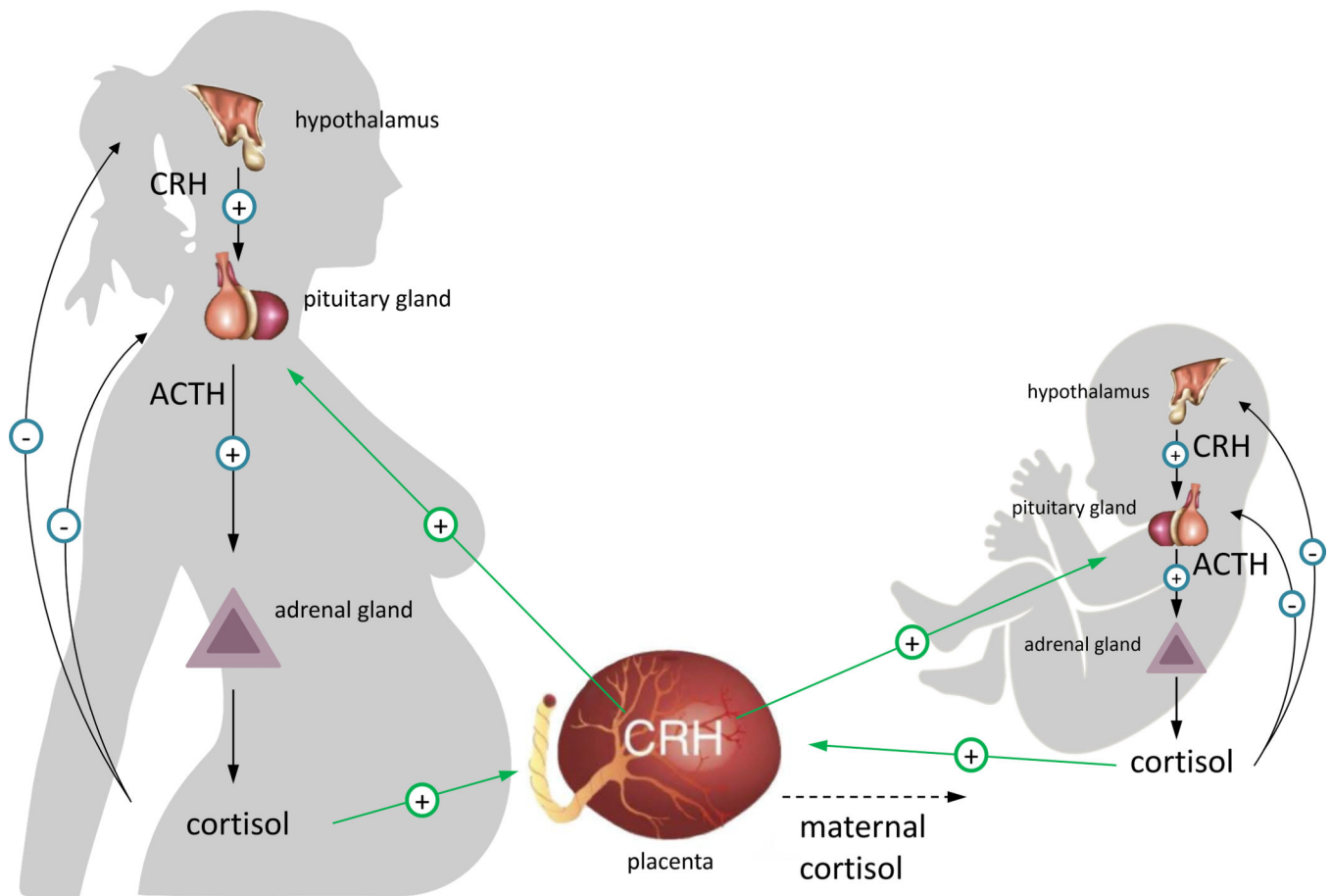


Figure 3.

Schematic representation of the maternal-placental-fetal steroidogenic unit. Placental corticotropin-releasing hormone (CRH) influences both maternal and fetal stress hormone production. In the maternal compartment, increases in placental CRH promote increased synthesis and release of ACTH and cortisol. Maternal cortisol in turn stimulates placental CRH production, generating a positive feedback loop (green lines). The placental enzyme 11 β -hydroxysteroid dehydrogenase 2 (11 β -HSD-2) oxidizes maternal cortisol into cortisone, but it is only a partial barrier, with some maternal cortisol entering fetal circulation. The developing fetal hypothalamic-pituitary-adrenal axis is regulated in part by maternal cortisol and placental CRH. Maternal cortisol may inhibit fetal pituitary ACTH release. Placental CRH likely stimulates production of fetal cortisol, both by increasing fetal adrenal responsiveness to ACTH and by direct stimulation of the adrenal. Increased fetal cortisol would in turn stimulate placental CRH production, constituting a second positive feedback loop (green lines). The massive amounts of hormones produced by the maternal-placental-fetal unit benefit both mother and fetus and influence the timing of parturition.

ACTH: Adrenocorticotropic hormone; CRH: Corticotropin-releasing hormone; 11 β -HSD-2: 11 β -hydroxysteroid dehydrogenase 2

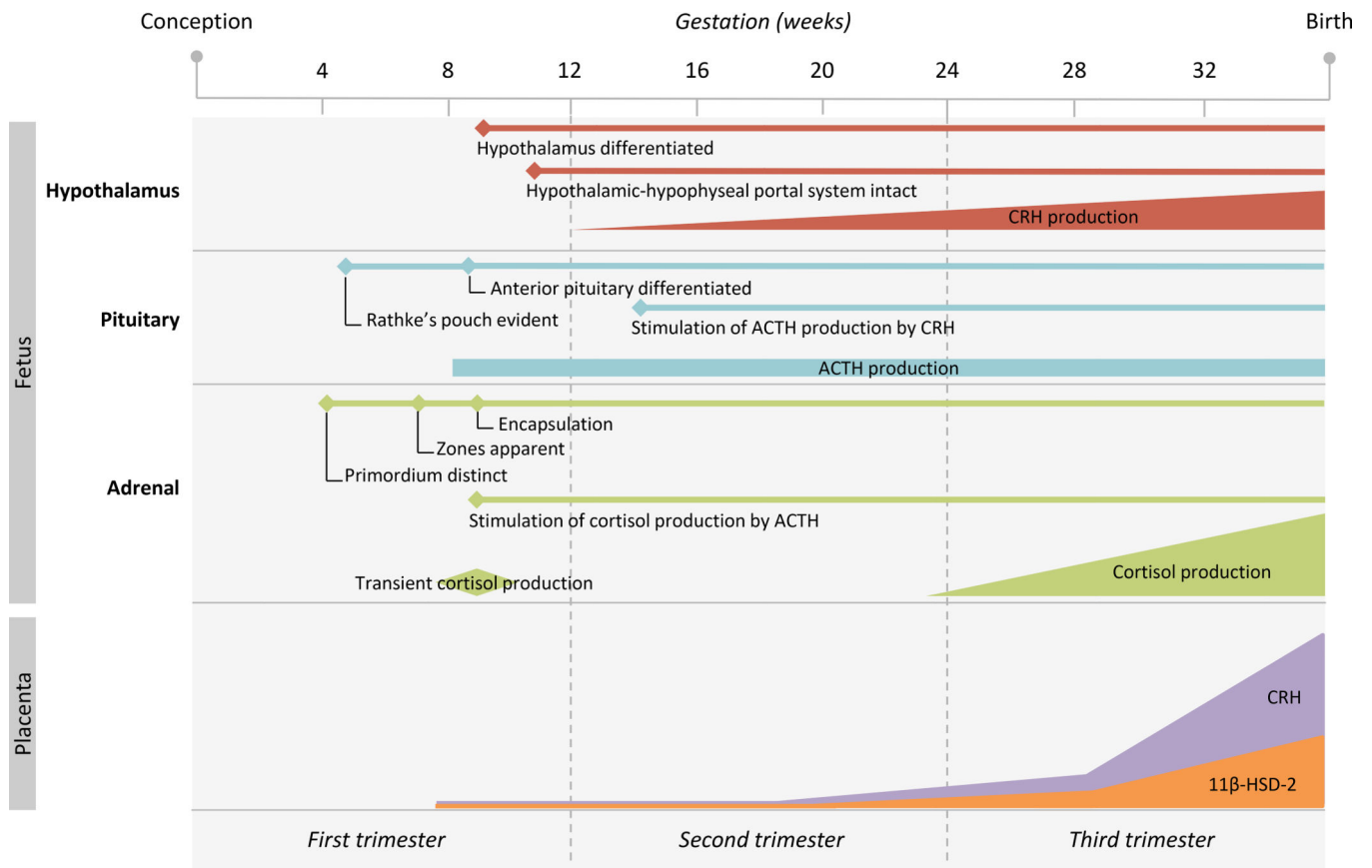


Figure 4. Time table summarizing fetal hypothalamic-pituitary adrenal (HPA) axis development. ACTH: Adrenocorticotropic hormone; CRH: Corticotropin-releasing hormone; 11β-HSD-2: 11β-hydroxysteroid dehydrogenase 2

Table 1.

Studies documenting associations between prenatal stress and postnatal HPA axis functioning

Study	Sample	Prenatal Exposure	HPA Axis Outcome	Findings
Neonate				
Davis et al. (2011)	116 women and their neonates	Maternal cortisol and psychosocial stress at 15, 19, 25, 31, and 37 weeks' gestation	Salivary cortisol response to heel-stick blood draw at approximately 24 hours after birth; samples collected pre-stressor and at 20 and 40 min post-stressor	Elevated maternal cortisol from 21–35 weeks' gestation was associated with larger neonatal cortisol response; strongest effects were at 25 weeks' gestation
Field et al. (2004)	119 women and their neonates	Maternal depressive symptoms and first morning urinary cortisol at approximately 20 weeks' gestation	Urinary cortisol within 24 hours of delivery	Neonates of mothers with elevated depressive symptoms had higher cortisol levels
Lundy et al. (1999)	63 women and their neonates	Maternal depressive symptoms and urinary cortisol during third trimester ($M = 32$ weeks' gestation, range = 27–35 weeks' gestation)	Urinary cortisol within 24 hours of delivery	Neonates of mothers with elevated depressive symptoms had higher cortisol levels
Marcus et al. (2011)	154 women and their neonates	Maternal depressive symptoms at 28, 32, and 37 weeks' gestation	ACTH and cortisol levels from umbilical cord artery blood at delivery	Neonates exposed to elevated levels of maternal depressive symptoms had higher ACTH levels than neonates exposed to low-stable depressive symptoms
Infant				
Braithwaite, Murphy, & Ramchandani (2016)	88 women and their 2–4-month-old infants	Maternal depressive symptoms during second or third trimester ($M = 28$ weeks' gestation; range = 15–41 weeks' gestation)	Salivary cortisol response to inoculation; samples collected anytime in day before stressor, immediately after stressor, and at 20 and 40 min post-stressor	No association between maternal depressive symptoms and infant cortisol response
Grant et al. (2009)	88 women and their 7-month-old infants	Maternal anxiety symptoms assessed via structured clinical interview during last trimester of pregnancy; women classified as meeting (or not meeting) criteria for prenatal anxiety disorder during last six months of pregnancy	Salivary cortisol response to the still-face procedure; samples collected at pre-stressor and at 15, 25, and 40 min post-stressor	Infants of mothers without prenatal anxiety disorders exhibited decrease in cortisol from 25–40 minutes post-stressor, while infants of mothers with prenatal anxiety disorders exhibited non-significant increase in cortisol across this interval
O'Connor et al. (2012)	125 women and their 17-month-old infants	Amniotic fluid cortisol during second or third trimester ($M = 17$ weeks' gestation; range = 15–37 weeks' gestation)	Salivary cortisol response to a maternal separation paradigm; samples collected pre-stressor and at 20 minutes post-stressor	Infants exposed to higher levels of amniotic fluid cortisol exhibited higher pre-stress cortisol levels and blunted stress responses (slight decrease over stressor)
Rash et al. (2016)	254 women at their 6-month-old infants	Maternal diurnal salivary cortisol output (4 samples over 2 consecutive days) and psychosocial stress at 15 weeks' and 32 weeks' gestation	Salivary cortisol response to set of structured laboratory frustration tasks at 6 months; samples collected pre-stressor and at approximately 15 minutes post-stressor	Infants who exhibited a decreased in cortisol in response to the task (as opposed to an increase) were exposed to a flatter maternal diurnal profile (less of a decline in cortisol over the course of the day) at 15 weeks' gestation
Stroud et al. (2016)	153 women and their 1-month-old infants	Maternal depressive symptoms assessed via structured clinical interview at approximately 23, 30, and 36 weeks' gestation; women classified as exhibiting prenatal depressive disorder, preconception-only depressive	Salivary cortisol response to NICU Network Neurobehavioral Scale; samples collected pre-stressor, end of stressor, and at 20 and 40 minutes post-stressor	Infants of mothers with prenatal depressive disorders exhibited higher baseline cortisol levels and higher cortisol response than infants of mothers with preconception only or no depressive disorders (effect

Study	Sample	Prenatal Exposure	HPA Axis Outcome	Findings
		disorder, or no depressive disorder		was driven by female infants); among infants of mothers with prenatal depressive disorders, decreased placental 11 β -HSD-2 methylation associated with increased baseline cortisol levels
Tollenaar et al. (2011)	173 women and their infants (assessed at 5 weeks, 8 weeks, 5 months, and 12 months)	Maternal anxiety, daily hassles, pregnancy related anxiety, and diurnal salivary cortisol output (5 samples per day over 2 consecutive days) during third trimester ($M = 37$ weeks)	Salivary cortisol response to a bathing session at 5 weeks, vaccination at 8 weeks, still-face procedure at 6 months, and maternal separation paradigm at 12 months; samples collected pre-stressor and at 25 and 40 minutes post-stressor	Higher pregnancy-related anxiety predicted higher infant cortisol response to stressor at 5 weeks and lower cortisol response to stressors at 8 weeks and 12 months
Child				
de Bruijn et al. (2009)	103 women and their 2–5-year-old children	Maternal anxiety and depressive symptoms at 12, 24, and 36 weeks' gestation; children whose mothers scored above a standardized cutoff or higher than 1 SD above the sample mean on one of the three measurements of anxiety or depression at any of the gestational intervals classified as the prenatally exposed group	Salivary cortisol response to a mother-child play task and a frustration task; samples collected at start of home visit, and at 22 minutes after each task	No differences in response patterns between prenatally exposed and non-exposed children, with both groups showing a decrease in cortisol levels over the tasks; among female children, higher overall cortisol levels in prenatally exposed; no effects among male children
Gutteling, de Weerth, & Buitelaar (2004)	24 women and their 4–6-year-old children	Maternal pregnancy-related anxiety, daily hassles, perceived stress, and early morning cortisol levels at 15–17 weeks' gestation; children placed in low and high prenatal stress groups by median split for each of the four prenatal stress measures	Salivary cortisol response to vaccination; samples collected pre-stressor and at 15, 20, 25, and 30 minutes post-stressor	Higher maternal prenatal daily hassles, pregnancy-related anxiety, and early morning cortisol levels were associated with higher overall child cortisol levels
Gutteling, de Weerth, & Buitelaar (2005)	29 women and their 5-year-old children	Maternal pregnancy-related anxiety, daily hassles, perceived stress, and early morning cortisol levels at 15–17 weeks' gestation; children placed in low and high prenatal stress groups by median split for each of the four prenatal stress measures	Diurnal salivary cortisol output on weekend day (5 samples over the day), on the first day of school (4 samples over the day), and on a school day one week later (4 samples over the day)	Higher maternal pregnancy-related anxiety and early morning cortisol levels were associated with higher overall child cortisol levels on school days
Martinez-Torteya et al. (2016)	$N = 119$ women and their 10-year-old children	Third trimester ($M = 33$ weeks' gestation) maternal report of exposure to intimate partner violence (IPV) during pregnancy	Salivary cortisol response to Trier Social Stress Test for Children; samples collected pre-stressor and at 20 and 40 minutes post-stressor	Identified three profiles of child cortisol response: consistently low levels, consistently moderate levels, and consistently high levels with increase from pre-stressor to 20 min post-stressor; exposure to maternal prenatal IPV increased likelihood of membership in high response group, as compared to consistently low and moderate response groups
Child				
O'Connor et al. (2005)	74 women and their 10-year-old children	Maternal anxiety and depressive symptoms at 18 and 32 weeks' gestation	Diurnal salivary cortisol output (4 samples per day over 3 consecutive days)	Higher maternal prenatal anxiety at 32 weeks' gestation predicted higher child awakening cortisol levels
Adolescent				

Study	Sample	Prenatal Exposure	HPA Axis Outcome	Findings
Huizink et al. (2008)	121 14-year-old twin pairs of Finnish women pregnant during the Chernobyl disaster and 157 14-year-old twin pairs of women who were pregnant one year after the disaster	Exposed or not exposed to Chernobyl disaster during pregnancy	Salivary cortisol levels measured once upon arrival to a laboratory visit	Adolescents whose mothers were in their second or third trimesters during the Chernobyl disaster had higher cortisol levels as compared to the reference group
O'Donnell et al. (2013)	899 women and their 15-year-old adolescents	Maternal anxiety and depressive symptoms at 18 and 32 weeks' gestation	Diurnal salivary cortisol output (4 samples per day over 3 consecutive days)	Higher maternal prenatal anxiety and depressive symptoms were associated with a lower cortisol awakening response and a flatter diurnal decline (smaller decrease) in cortisol levels in adolescents; effects similar at 18 & 32 weeks' gestation
Van den Bergh et al. (2008)	58 women and their 14–15-year old adolescents	Maternal anxiety symptoms at 12–22, 23–32, and 32–40 weeks' gestation	Diurnal salivary cortisol output (3 samples over one day)	Elevated prenatal maternal anxiety at 12–22 weeks' gestation was associated with a flatter diurnal decline (smaller decrease) in cortisol levels in adolescents; in female adolescents this cortisol profile was associated with higher depressive symptoms
Adult				
Entringer et al. (2009)	31 young adults whose mothers reported experiencing a major negative life event during pregnancy and a control group of 30 age-matched young adults	Maternal prenatal life events were obtained retrospectively by young adult children in communication with mothers at time of the assessment	ACTH and serum cortisol responses to Trier Social Stress Test (samples pre-stressor and at 15, 25, 35, and 105 minutes post-stressor), pharmacological stimulation of pituitary (ACTH _{1–24} test), and diurnal salivary cortisol output (20 samples over one weekday)	Prenatal stress-exposed group exhibited lower baseline cortisol levels and greater increases in cortisol (baseline to peak) in response to stressor, as well as trend-level higher ACTH levels during the stressor; prenatal stress-exposed group exhibited lower cortisol levels during ACTH _{1–24} test; no differences in diurnal cortisol output between the two groups