

HiLux Triproof



Power Tunable

CCT Tunable

CE  RoHS IP66 IK10

Features:

1. High lighting efficiency 135 lm/watt, 150lm/w optional;
2. Power & CCT Tunable design provides versatility and flexibility for different request;
3. Modern, stylish, excellent surface treatment;
4. IP66 Waterproof, IK10 Impact Protection;
5. Fast-fit installation, suspended or surface mounted
6. Low operating temperature, makes it extremely versatile under different easy/hard operating conditions;
7. 5 years warranty

HiLux Triproof Linear Industrial Luminaire

HiLux Triproof Linear Industrial Luminaire



szAMB HiLux tube is a unique design with Power & CCT Tunable function and fast-fit connection. It provides excellent lument output, long-lasting stability and spendid sight, and it is IP66 ingress protection & IK10 impact protection which can be widely used in many industrial places, such as car wash, parking lot, basement, warehouse.

Model Rule

HL4-20/40W-CT-OO

HL5-30/50W-CT-OO

HL: HiLux Tube

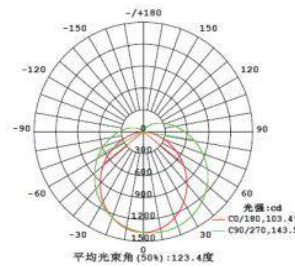
4: 4FT, 1200mm

20/40W: 20W & 40W Power Tunable

CT: CCT Tunable

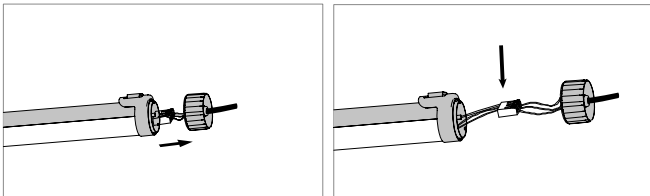
OO: On/off, Non-Dimmable

Average beam angle(50%):140°



Beam Angle:140°

FAST-FIT CONNECT

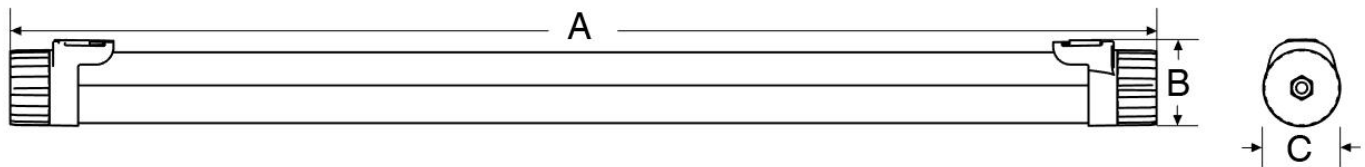


Luminaire Body

Use high-quality PC+ABS material, high light transmittance, high efficiency and energy saving.



DIMENSION DATA



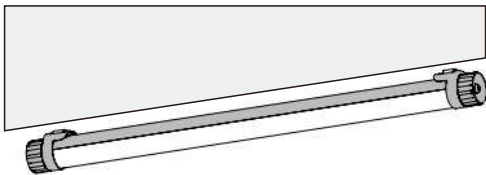
Power	Dimension A (mm)	Dimension B (mm)	Dimension C (mm)
20-40W	1180	96	86
30-50W	1480	96	86

Technical Data

Model No.	HL4-20/40W-CT-OO	HL5-30/50W-CT-OO
Norminal Wattage	20/40W Tunable	30/50W Tunable
Dimension(mm)	1180*φ86*96mm	1480*φ86*96mm
Weights	1.35kg	1.65kg
Input Voltage AC	AC100-120V or AC220-240V	
LED Brand	SMD2835	
Function	On/Off, Triac/0-10V/Dali Optional	
Driver Brand	Patent Driver	
Operating Temperature	-20 to +40°C	
Power Factor(PF)	>0.9	
THD	<15%	
Lumen Output(+/-5%)	2700-5400Lm	4050-6750Lm
Luminarie Efficiency(+/-5%)	135lm/w, 150lm/w Optional	
Beam Angle	140°	
Ra	Ra>80	
CCT	4000K & 5000K Tunable, other CCT Optional	
Rating	IP66 IK10	
Material	PC + ABS	
Installation	Suspending Mounted/Surface Mounted	
Accessories(Optional)	Motion Sensor/Emergency Kits Optional	
Shell Color	White & Gray	
Lumen Maintenance	>50,000H L70/B50 at 25°C	
Certifications	CE RoHS	

Installation

Surface Mounted



Suspending Mounted

