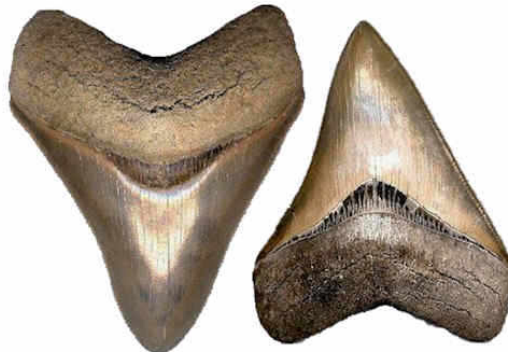


Common Shark Fossils from the Miocene and Pliocene of North and South Carolina

For Detailed Information
Go to:



www.fossilguy.com



Carcharocles megalodon
(Megatooth Shark)



Carcharocles subauriculatus
(Megatooth Shark)



Carcharodon carcharias
(Great White Shark)



Carcharodon plicatilis
(Giant White Shark)



Carcharodon hastalis
(Narrow White Shark)

www.fossilguy.com



Isurus oxyrinchus
(Mako Shark)



Hemipristis serra
(Snaggletooth Shark)



Notorynchus cepedianus
(Sevengill Cow Shark)



Hexanchus griseus
(Sixgill Cow Shark)



Galeocerdo cuvier
(Tiger Shark)



Galeocerdo aduncus
(Tiger Shark)



Physogaleus contortus
(Tiger-like Shark)



Sphyrna sp.
(Hammerhead Shark)



Carcharhinus sp.
(Requiem Shark)



Carcharias sp.
(Sand Tiger Shark)



Negaprion sp.
(Lemon Shark)



Shark Vertebra