

City of Fritch



Capital Improvement Long Term Plans

Street Improvement Plan

The following yearly plan is subject to change at any time.

Roads to be Chip Sealed



Original Town Fritch - South

Street Name	Direction	Dirt Portion
Wisconsin	EW	Holmes to S. Railroad
Illinois	EW	Holmes to S. Railroad
Ohio	EW	Holmes to S. Railroad
Palm	EW	Holmes to S. Railroad
Elm	EW	Holmes to S. Sheridan
Maple	EW	Holmes to S. Longwood
Locust	EW	Hoyne to S. Cornell
Birch	EW	S. Robey to S. Ridgland
S. Hoyne	NS	Walnut to Locust
Holmes	NS	Walnut to Elm

Original Town Fritch - North

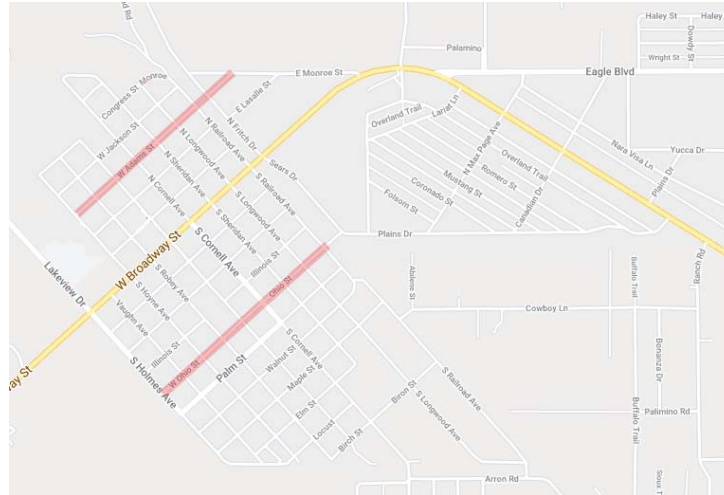
Street Name	Direction	Dirt Portion
Congress	EW	Entire Street
Jackson	EW	Entire Street
Adams	EW	Entire Street
Davidson	EW	Entire Street
N. Robey	NS	Adams N. to Dead End
N. Ridgeland	NS	Adams N. to Dead End
N. Cornell	NS	Congress N. to Dead End
N. Sheridan	NS	Jackson N. to Dead End
N. Railroad	NS	LaSalle N. to Dead End

Canadian River Park

Street Name	Direction	Dirt Portion
Canadian Dr.	NS	Nara Visa to Eagle
Plains Dr.	NS	Nara Visa to Hwy 136

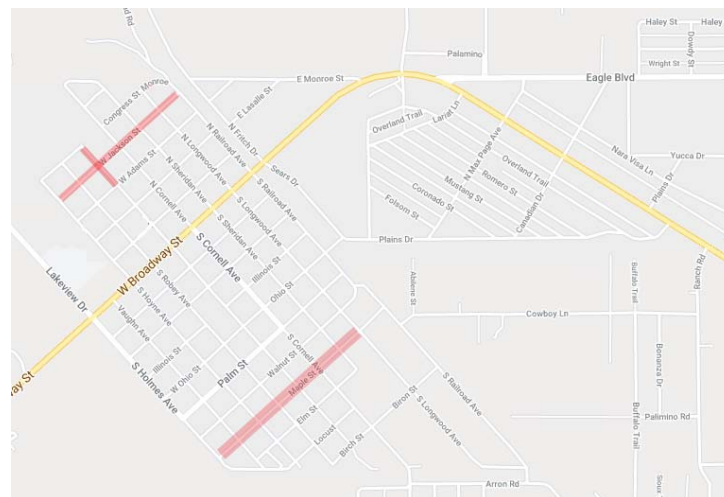
Year 1 – 2021

Street Name	Direction	Dirt Portion	Location
Adams	EW	Entire Street	OLD TOWN FRITCH - N
Ohio	EW	Holmes to S. Railroad	OLD TOWN FRITCH - S
Eagle Blvd.	EW	Additional Seal Coat	CANADIAN RIVER PARK
Walnut	EW	Additional Seal Coat	OLD TOWN FRITCH - S



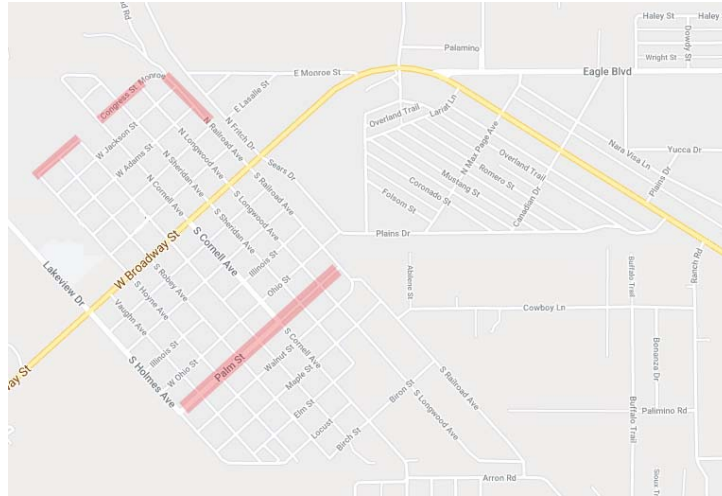
Year 2 – 2022

Street Name	Direction	Dirt Portion	Location
Jackson	EW	Entire Street	OLD TOWN FRITCH - N
N. Ridgeland	NS	Adams N. to Dead End	OLD TOWN FRITCH - N
Maple	EW	Holmes to S. Longwood	OLD TOWN FRITCH - S
TBD		Additional Seal Coat	



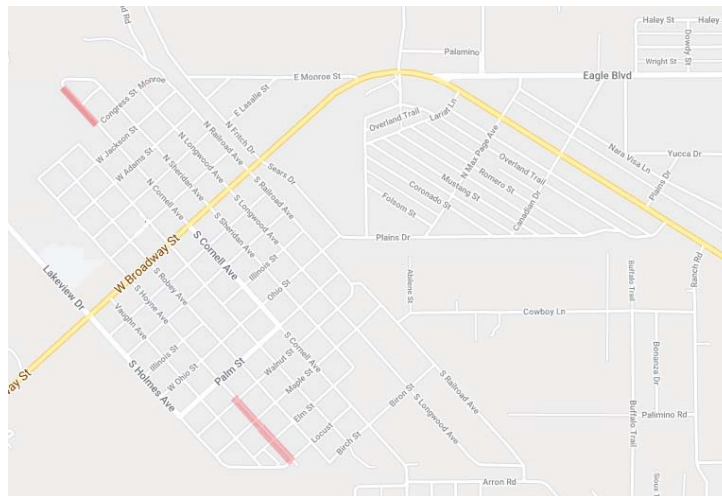
Year 3 – 2023

Street Name	Direction	Dirt Portion	Location
Congress	EW	Entire Street	OLD TOWN FRITCH - N
Palm	EW	Holmes to S. Railroad	OLD TOWN FRITCH - S
N. Railroad	NS	LaSalle N. to Dead End	OLD TOWN FRITCH - N
TBD		Additional Seal Coat	



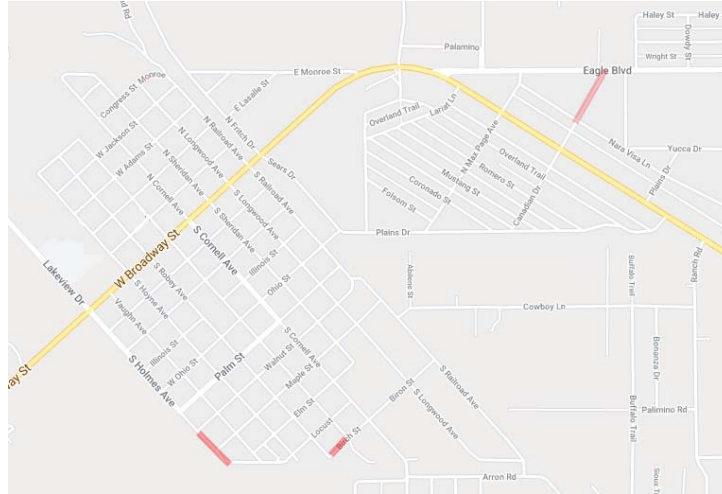
Year 4 – 2024

Street Name	Direction	Dirt Portion	Location
S. Hoyme	NS	Walnut to Locust	OLD TOWN FRITCH - S
N. Cornell	NS	Congress N. to Dead End	OLD TOWN FRITCH - N
Elm	EW	Holmes to S. Sheridan	OLD TOWN FRITCH - S
TBD		Additional Seal Coat	



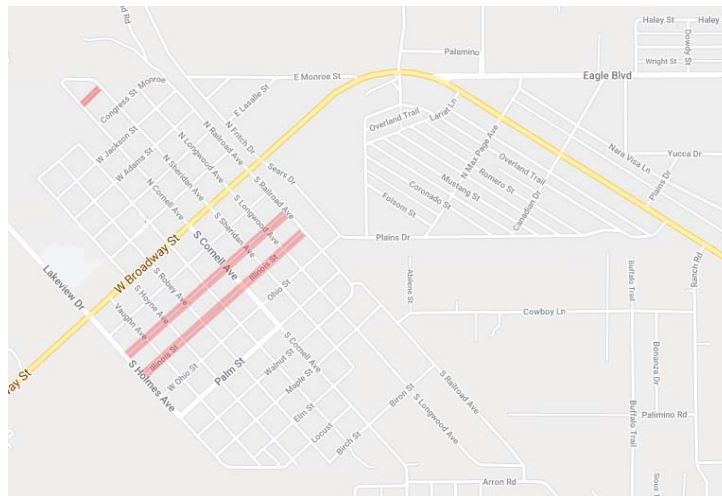
Year 5 – 2025

Street Name	Direction	Dirt Portion	Location
Canadian Dr.	NS	Nara Visa to Eagle	CANADIAN RIVER PARK
Birch	EW	S. Robey to S. Ridgland	OLD TOWN FRITCH - S
Holmes	NS	Walnut to Elm	OLD TOWN FRITCH - S
TBD		Additional Seal Coat	



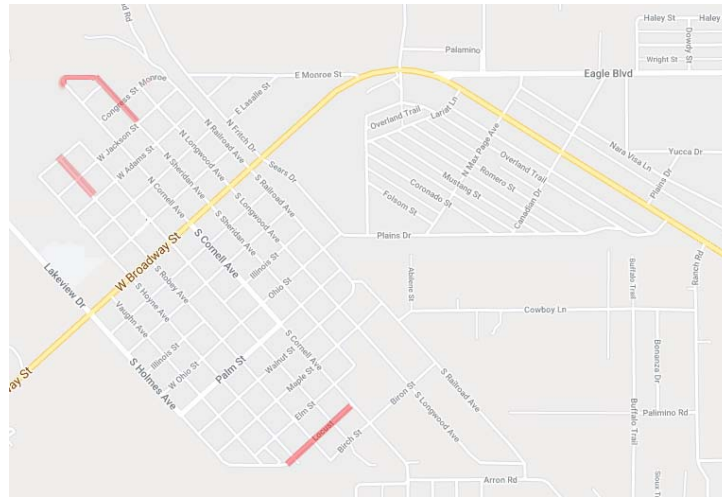
Year 6 – 2026

Street Name	Direction	Dirt Portion	Location
Illinois	EW	Holmes to S. Railroad	OLD TOWN FRITCH - S
Wisconsin	EW	Holmes to S. Railroad	OLD TOWN FRITCH - S
Davidson	EW	Entire Street	OLD TOWN FRITCH - N
TBD		Additional Seal Coat	



Year 7 – 2027

Street Name	Direction	Dirt Portion	Location
N. Sheridan	NS	Jackson N. to Dead End	OLD TOWN FRITCH - N
Locust	EW	Hoynes to S. Cornell	OLD TOWN FRITCH - S
N. Robey	NS	Adams N. to Dead End	OLD TOWN FRITCH - N
TBD		Additional Seal Coat	



Water / Waste Water Improvement Plan

The following yearly plan is subject to change at any time.

Year 1 – 2021

- **Phase 2 - Elev. Storage Tank** \$284,000
Replacing control valves, updating safety features, and applying a recoat.
- **Phase 2 - Ground Storage Tank** \$227,000
Rehabilitate and recoat GST on Deahl Ranch

Year 2 – 2022

- **Sewer System 1** \$1,085,000
Conduct water balance analysis, soil analysis, & begin repairs.
\$85k for testing, half overall costs

Year 3 – 2023

- **Sewer System 2** \$1,000,000
Complete second half of sewer repairs

Year 4 – 2024

- **Phase 3 - Ground Storage Tank** \$785,000

Rehabilitate or construct new GST for Brinson side - cost share with CDBG.

Year 5 – 2025

- **No Projects** \$0

Rebuild reserve

Year 6 – 2026

- **Phase 4 - Pressure Station** \$675,000

Near Plains Dr. to begin connecting the two systems together.

Year 7 – 2027

- **No Projects** \$0

Rebuild Reserve

Year 8 – 2028

- **Phase 5 - Complete Tie-In** \$755,000

16" transmission line to complete the connection of both systems.

Year 9 – 2029

- **Phase 6a** \$525,000

Additional 16" line, add pressure station, and abandon old Brinson tank.

Year 10 – 2030

- **Phase 6b** \$525,000

Complete phase 6

Year 11 – 2031

- **Phase 7a** \$525,000

Additional 16" line between new pressure stations

Year 12 – 2032

- **Phase 7b** \$525,000

Complete phase 7

Year 13 – 2033

- **Phase 8a** \$625,000

Construct 12" line from Plains Dr. to LMH.

Year 14 – 2034

- **Phase 8b** \$625,000

Complete phase 8.