



Access to Mt. Fuji Fujinomiya Trail 5th Station

BY BUS

You can take a direct bus (Fuji-tozan bus) to Fujinomiya Trail 5th station at the stations below.

- Shin-Fuji station (Tokaido Shinkansen)
- Fuji station (JR Tokaido Line)
- Fujinomiya station (JR Minobu Line)
- Mishima station (Tokaido Shinkansen, JR Tokaido Line)
- Shizuoka station (Tokaido Shinkansen, JR Tokaido Line)

*Direct highway bus (Yakisoba Express) to Fujinomiya station is available at Tokyo Yaesu South entrance.

Please check the following for further details about a bus fare and schedule.



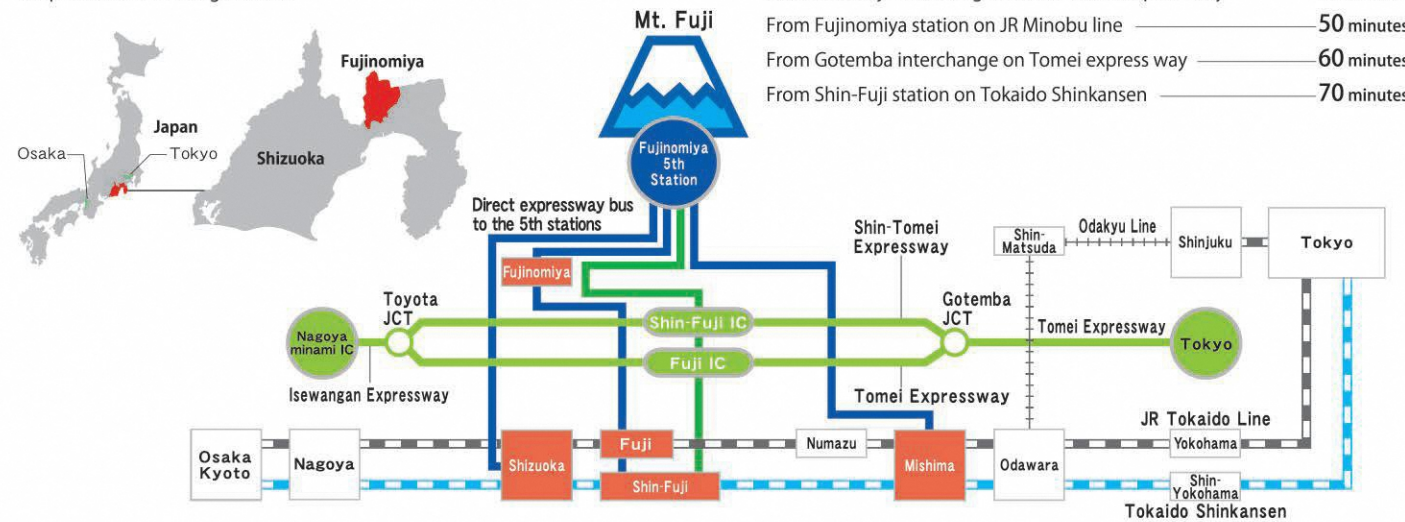
FUJIKYU SHIZUOKA BUS
<http://www.shizuokabus.co.jp/foreigner/en/index.html>



FUJIKYU BUS
<http://bus-en.fujikyuu.co.jp/>

BY TAXI and VEHICLE FOR HIRE

Taxi and vehicle for hire are allowed to drive on Mt. Fuji Skyline road during the period of vehicle regulations.



BY PRIVATE CAR and RENTAL CAR

During the opening period of Mt. Fuji from July 10th to September 10th, you are not allowed to go to Mt. Fuji Fujinomiya Trail 5th station by private car or rental car due to vehicle regulations. Please park your car in Mizugatsuka Park (¥1,000) and take a shuttle bus or a shuttle taxi.

Information about shuttle bus and taxi

- Shuttle bus from Mizugatsuka Park to Mt. Fuji Fujinomiya Trail 5th station
Operating hour: 6AM-8PM
Fare: one-way trip ¥1,150 per person, round trip ¥1,800 per person
Traveling time: about 40 minutes
- Shuttle Taxi from Mizugatsuka Park to Mt. Fuji Fujinomiya Trail 5th station
Operating hour: 24 hours
Fare: one-way trip around ¥4,370 per car
Traveling time: about 30 minutes

Mt. Fuji Skyline climbing road is closed from beginning of November to end of April due to the weather.

Access to Mt. Fuji Fujinomiya Trail 5th station by car

- From Fuji interchange on Tomei express way ————— 60 minutes
- From Shin-Fuji interchange on Shin-Tomei express way ————— 60 minutes
- From Fujinomiya station on JR Minobu line ————— 50 minutes
- From Gotemba interchange on Tomei express way ————— 60 minutes
- From Shin-Fuji station on Tokaido Shinkansen ————— 70 minutes

Mountain Huts

Summit of Mt. Fuji (Chojo-Fujikan) web http://fujisancho.com/ 	Mt. Fuji 9.5th Station (Munatsuki-Sanso) web http://munatsuki.com/ 	Mt. Fuji 9th Station (Mannenyuki-Sanso) web http://mannenyuki.wix.com/mannenyuki 	Mt. Fuji 8th Station (Ikeda-kan) web http://www.fuji8.com/
Mt. Fuji old 7th Station (Yamaguchi-Sanso) web http://fujisan-ganso.jp/ 	Mt. Fuji new 7th Station (Goraikou-Sanso) web http://www.goraikousansou.com/ 	Mt. Fuji 6th Station (Hoei-Sanso) web http://houeisansou.com/ 	Mt. Fuji 6th Station (Unkai-So) web http://www.unkai8.com/

- Please see information of reservation and operation hour on webpage.
- Making reservation may not be accepted when fully booked.
- In case of change or cancellation please contact mountain hut immediately.
- Mountain huts are not available for short rests.

Accommodation fee at mountain hut
One night without meal ¥5,500 (plus ¥1,000 on Saturdays)
One night with two meals ¥7,500 (plus ¥1,000 on Saturdays)

- Opening Period of mountain hut**
- From new 7th Station to the summit
Only during the opening period of Mt. Fuji (July 10th - September 10th)
 - 6th Station
From end of June to beginning of October
 - 5th Station Resthouse
From end of April to beginning of November

5th Station Resthouse Telephone: 090-7618-2230 (open from end of April to beginning of November)

Publisher : Mt. Fuji Fujinomiya Entrance 5th Station Public Restroom Management Council (Liaison: Tourism Division, Fujinomiya City Hall)

Climbing Mt Fuji Fujinomiya Trail Guide and Map

Please support the "Fujisan Conservation Donation Campaign"

So future generations may inherit a beautiful Mt. Fuji we ask all climbers to make a contribution (¥1,000 or more) at the 5th station to help our environmental conservation and climber safety enhancement efforts.

Your support is greatly appreciated and we sincerely hope you enjoy your time on the mountain!



Get "Mt. Fuji Climbing Certificate" at each hut for FREE!!

Fujinomiya Tourist Association
Web : <http://fujinomiya.gr.jp/en/>

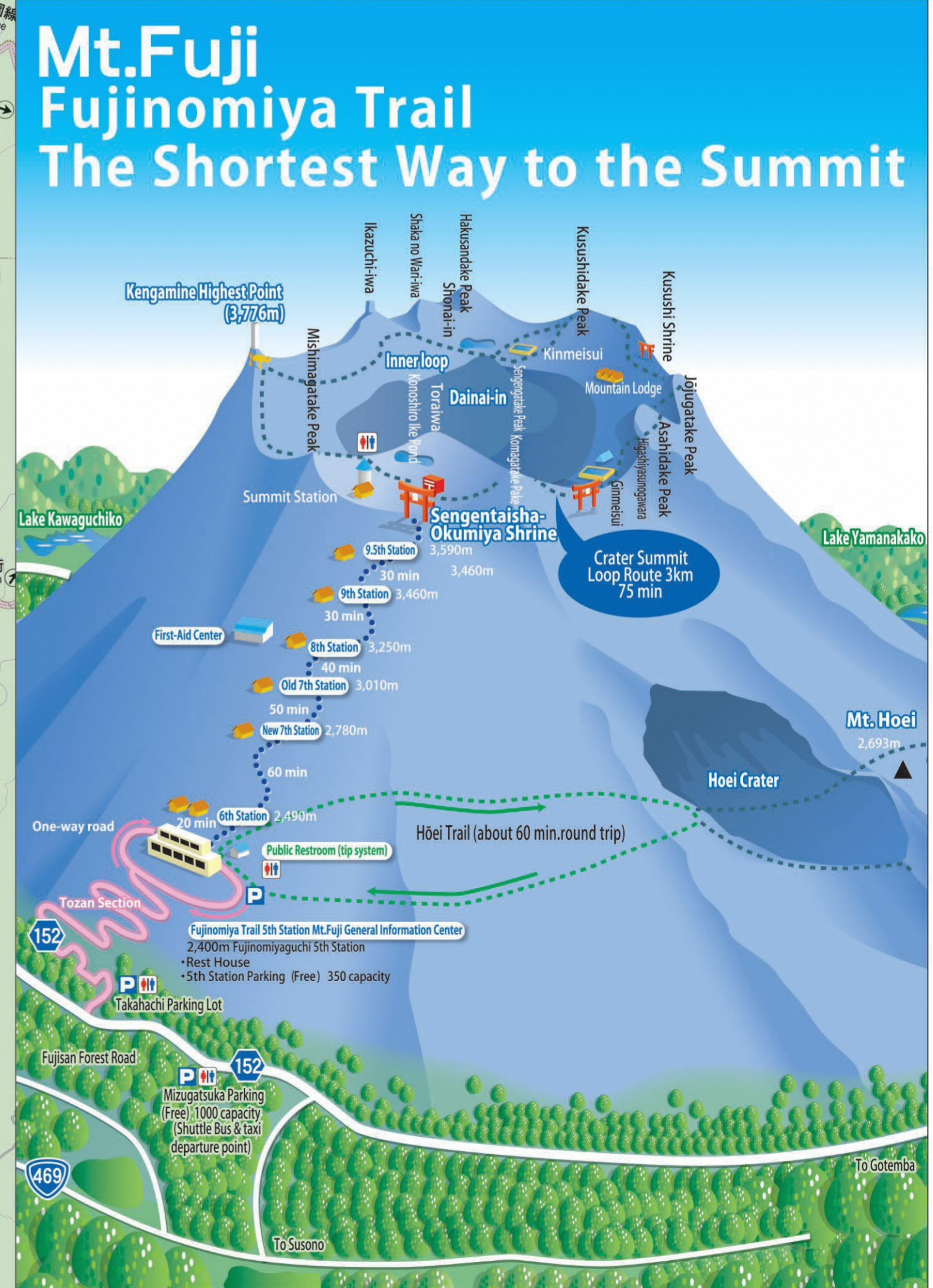
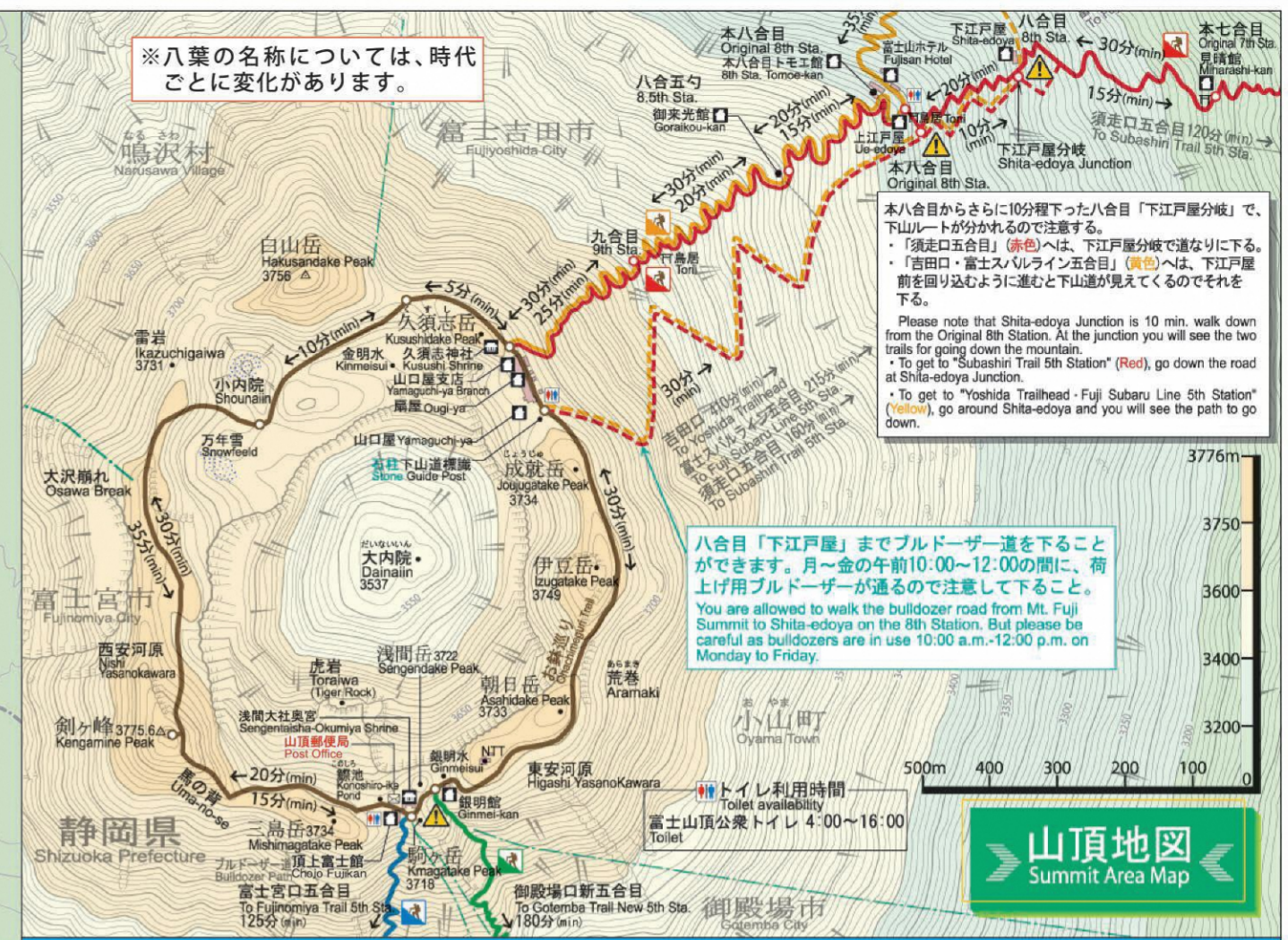
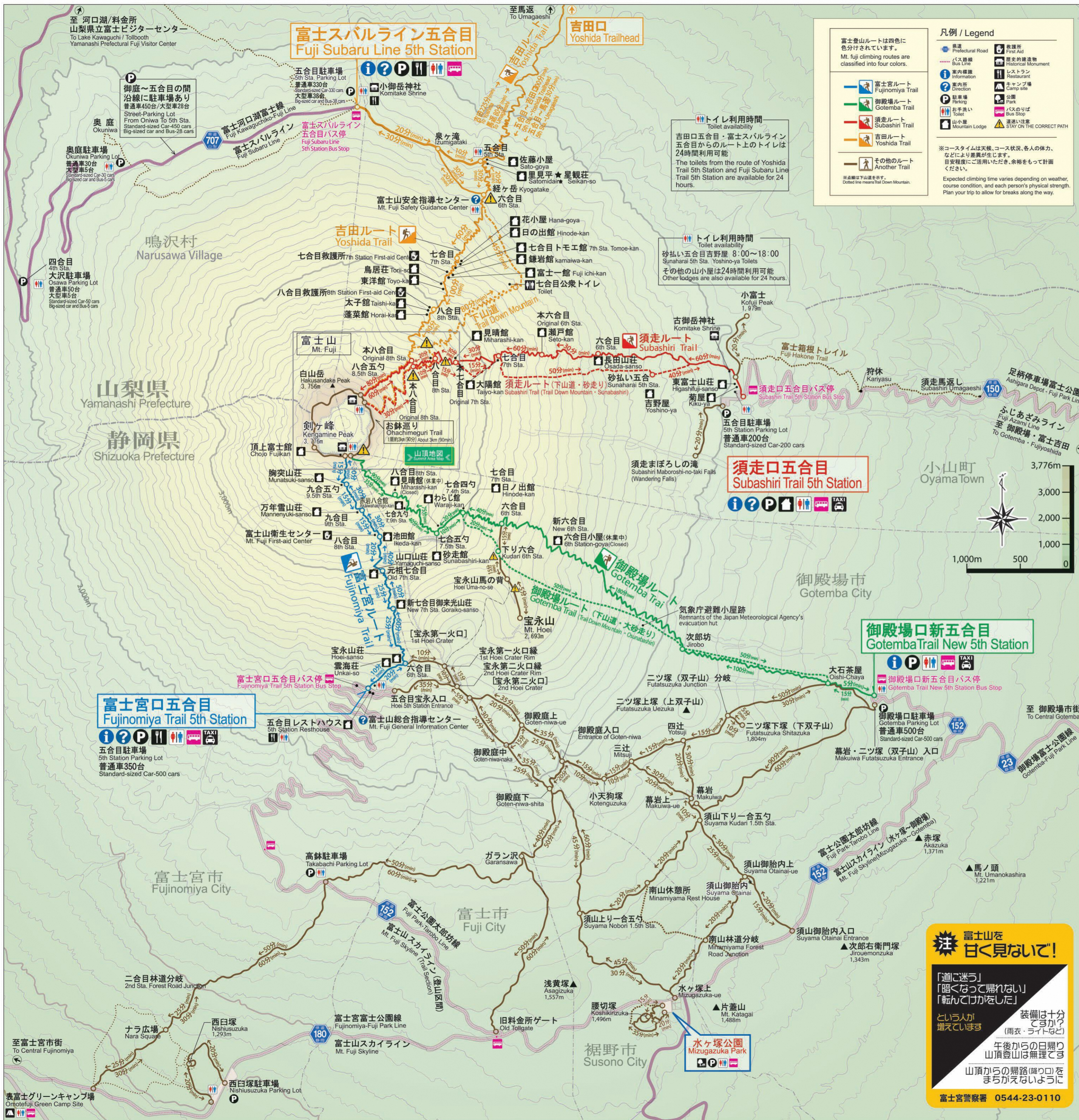
Information about Mt. Fuji
Official Web Site for Mt. Fuji Climbing
Web : <http://www.fujisan-climb.jp/en/>

The Complete Guide to Mt. Fuji
Web : www.fujisan223.com/en/

Fujinomiya City Tourism Information
Fujinomiya Tourism Organization
Mt. Fuji West Side Story
Web : <http://www.fujisan-westsidestory.jp/en/index.html>

Introduction of experience tours (Fujinomiya township & culture tour)
Web : <https://www.mtfujiecotours.com/>

Fujisan Tourism & Communication Bureau
Web : <http://www.fujisan-kkb.jp/english/climbing/3776.html>



富士山を 目く見ないで!

「道に迷う」「暗くなって帰れない」「転んでけがをした」
 という人が 増えていります

装備は十分ですか?
 (雨衣・ライトなど)
 午後からの日帰り 山頂登山は無理です
 山頂からの帰路(降り口)を まちがえないように

富士宮警署 0544-23-0110



How to Be A Good Mt. Fuji Climber

Check Official Web Site before Climbing Mt. Fuji for Safety

Mt. Fuji is a charming mountain but should not be taken lightly. Please gather ample information prior to climbing.

Web : <http://www.fujisan-climb.jp/en/basic/index.html>

Avoid Bullet Climbing

"Bullet Climbing" - Climbing without rest can significantly increase chances of injury or illness. Overnight rest during your climb is advised.

Take Only Good Memories, Leave Only Footprints

Please take your trash with you when you leave - help us keep Mt. Fuji clean for future generations.

Sacred Mt. Fuji: National Park and World Cultural Heritage Site

Mt. Fuji is a sacred and revered symbol of Japan and all the animals, plants and rocks are protected by the blossom-princess Konohana Sakuya Hime. Please respect our sacred mountain - graffiti and/or the removal of rocks and vegetation is strictly prohibited.

Pay Close Attention to Mountain Signage

Mt. Fuji has 4 different ascending trails (Fujinomiya-trail, Gotemba-trail, Subashiri-trail, and Yoshida-trail). Signs for each trail are distinguished by separate colors that can be found at each 5th station starting point. For your safety, and to prevent entering the bulldozer road, always follow the ropes.

Keep the Toilets and Other Public Facilities Clean

Eco-friendly toilets have been set up along the trails which use sawdust, oyster shells etc to help break down human waste. This system is an amazingly effective way to reduce sewage disposal, prevents direct discharge into the environment and eliminates the smell. Preserving Mt. Fuji for all to enjoy is a challenge and your help and support of our eco-friendly systems is greatly appreciated.

Be Considerate of others!!

As a general rule climbers descending the mountain are expected to give way to climbers that are ascending the mountain.

Be Careful of the Falling Rocks

Mt. Fuji lava rocks are unstable and fall easily. If this occurs, as loudly as you can, please be sure to let others know in order to avoid injury.

Shhhhh.....

Let's Be Quiet in and around Huts

Climbers may be sleeping in the huts at anytime of the day. Please be respectful of others, enjoy the experience and climb safely.

Fuji-Hakone-Izu National Park Acts

The following acts are prohibited by law in the designated area.

- Disturbing animals and plants
- Removing lava and rocks from area
- Pitching a tent / making a fire
- Releasing pets, etc.
- Sowing seeds or planting seedlings.



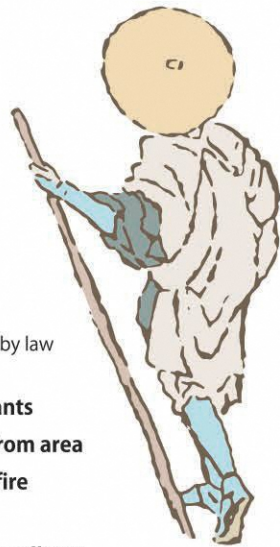
Necessary equipment

- Confirm necessary equipment for the summer season climbing before departure. The risks involved with climbing Mt. Fuji should not be underestimated or taken lightly - insufficient preparation is dangerous and may result in injuries or accidents.
- Please make sure to bring helmet, dust mask and goggles in case of sudden eruption. Helmet protects your head from rock fall and falling down. Mask and goggles or sunglasses are also useful when you go down a mountain on dusty road.

- Hat (guard against sunlight)
- Outfit for cold weather
- Outer wear (fleece jacket, sweater)
- Gloves (guard against injury, cold)
- Shoes with strong sole (climbing shoes, hiking boots)
- Water (1-2L)
- Rain wear (jacket and pants)
- Backpack
- Garbage bag
- Light food (snack)
- Underwear (quick-drying)
- Bag for your baggage guard against rain
- Towel
- Tissue paper
- Sunblock
- Medicine (for emergency)
- Compass (to confirm direction)
- Mt. climbing map
- Helmet (guard against rock fall and falling down)
- Mask and goggles (guard against dusty road)
- Head lamp (for delayed schedule)
- ¥100 Coins to tip for toilet
- Cash (credit card is not accepted at mountain hut. Only Cash for paying accommodation fee at mountain hut, or for buying food and drink)
- Mobile phone (for emergency communication)
- Spare battery for mobile phone (battery may be running out fast as signal is weak at some place)

*Rental gear is available - please check the following websites.

- yamarent**
Web: <https://www.yamarent.com/en?language=en>
- Soranoshita**
Web: <http://www.soranoshita.net/en/>



Mt. Fuji Information



Goraiko Enjoy the beautiful sunrise from new 7th station and higher around 4:30AM.



Kage-Fuji

Shadow of Mt. Fuji can be seen on the foot of the mountain at sunrise or sunset.



Ohachi-meguri

Challenge 3km-walk around the highest summit of Japan. Course time: 1.5-2hrs.



Hiei Crater Tour Route

Can't make it to the Summit? Visiting out of Season?

Easily accessible from 5th station Hiei Crater is Mt. Fuji's largest and 'youngest' crater. With clear weather you can get magnificent views of the Pacific Ocean from the trail and discover a side of the mountain.

Route Guide (see map above): Depart 5th sta. and follow trail via 6th sta. to the crater. After exploring the main crater area, walk down along the ridge line of the 2nd crater. At the bottom take a sharp right and continue into the forest route to the east side of 5th sta. Be careful of the signs and stay on the trail.



Scenery from Summit



Night Scene from Mt. Fuji

Where to visit around Mt. Fuji

Fujisan Hongu Sengentaisha Shrine

Mt. Fuji is worshipped as the main god of this shrine, which is the head shrine of over 1300 Sengen shrines throughout Japan. Before climbing Mt. Fuji, people used to purify themselves at Wakutama pond in this shrine.

Opening hours:

5:00AM - 8:00PM April-September

5:30AM - 7:30PM March-October

6:00AM - 7:00PM November-February

Access: 10 minutes' walk from Fujinomiya station



Opening Period

July 10th - September 10th

Out of this period, most of huts and toilets are closed except for some huts.

Vehicle Regulations to the Fujinomiya trail 5th station

The Fujinomiya 5th station is not accessible by car during the Opening Period. If you are planning to drive, there is a Shuttle Bus that runs from the Mizugatsuka parking area - See "Access to Mt. Fuji"

Weather

As the weather at the mountain is quite changeable, please check the latest weather forecast.

Japan Meteorological Agency (www.jma.go.jp/jma/indexe.html)

The difference in temperature between the foot of the mountain and the summit may exceed 20°C. Temperature lowers at a rate of approximately -0.6°C per 100 m of altitude. At the summit, it gets cold enough to have snowfall even in summer. When the wind is blowing, you will feel even colder. Make sure to prepare protection against the cold and rain, wind and cold temperatures.

Mountain Huts

Reservation is required to stay at all mountain huts.

Please check the operating hours as some mountain huts are not open 24 hours. Some mountain huts do not accept climbers who arrive at night. For payment, they accept cash only.

Mt. Fuji General Information Center (5th station)

Climbing and tourism information is available here. This center is also a temporary police box in case of trouble.

Operation period:

July 10th - September 10th

TEL: 090-2182-2239



Mt. Fuji First-aid Center (8th station)

Doctors provide climbers emergency treatment for sudden illness or injury.



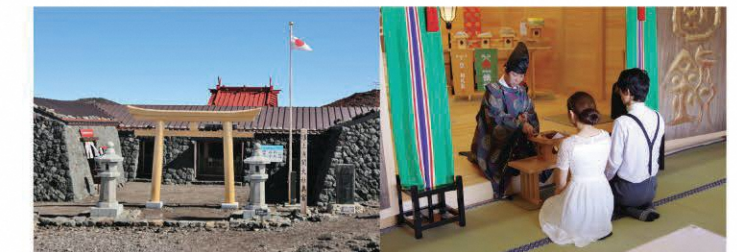
Post Office (Summit)

Operation period: Beginning of July - End of August
Why don't you send a postcard from the highest place of Japan?



Sengentaisha-Okumiya Shrine (Summit)

The entrance of the shrine is actually at 8th station. From the 8th station to the summit is this shrine's property. If you have a wooden stick "Kongo-Tsue," they provide the special red ink seal here. Holding a wedding ceremony is also available. (Reservation required)



Mt. FUJI WORLD HERITAGE CENTRE, SHIZUOKA

Stunning new exhibition center in the heart of Fujinomiya. After completing a circuit of the virtual mountain climbing experience here, you will feel as though you have climbed the mountain itself.

Opening hours : 9:00AM - 5:00PM (Until 6:00PM in July & August)

Closed : Third Tuesdays (Following day if Third Tuesday is a holiday)

Admission fee : Individual...300 yen

Group...200 yen (Reservation required over 20 or more persons)

Access : 10 minutes' walk from Fujinomiya station

