

## Product Description

Card capacity: 1000

Password capacity: 1000

Storage capacity:100000

Display: OLED

Access card reader mode no card capacity limit

Comes with an independent backlight doorbell button

U-disk to download and upload user information

V-Self-service excel report for attendance

TXT form original attendance record

Communication way: U-disk

Voice: Yes

|                        |                                      |
|------------------------|--------------------------------------|
| Material               | Aluminum alloy                       |
| User card Capacity     | 1000                                 |
| Record Capacity        | 100000                               |
| Card frequency         | Mifare-13.56MHz                      |
| Display                | OLED low power consumption           |
| Waterproof Rate        | Non-Waterproof                       |
| User Password Capacity | 1000 groups                          |
| Wiegand Protocol       | Standard WG26/WG34                   |
| Voice Prompt function  | Chinese and English language support |
| Anti-tamper alarm      | Support                              |
| Dimension              | 117 X 78 X 22mm                      |

## Touch Screen Standalone Access Controller

city on hideo wled to be handed hideo rthad the rthad to offer the r hideo scocory a collection city on hideo wled to be handed  
e rthad to offer the r hideo scocory a collection city on hideo wled to be handed



U disk transfer  
data



Voice function



IC card

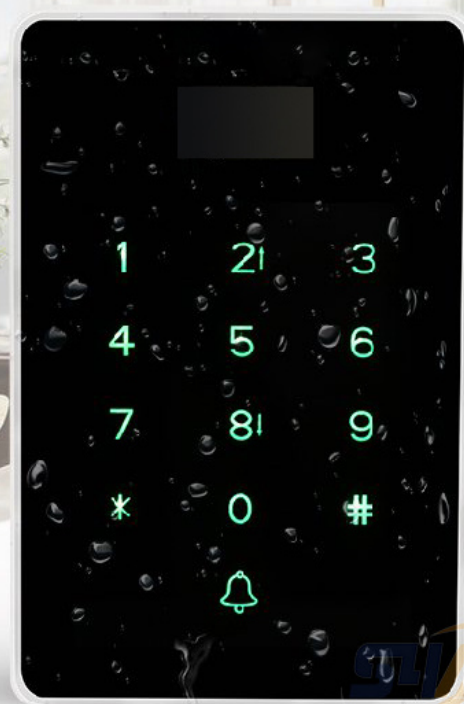


Full touch  
button



1000 User

**Waterproof  
IP65**





OLED LCD screen



Import ARM32-bit CPU system



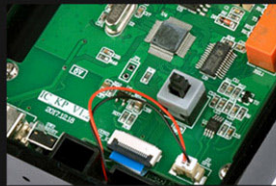
Backlit doorbell button



U disk transfer information



Aluminum body



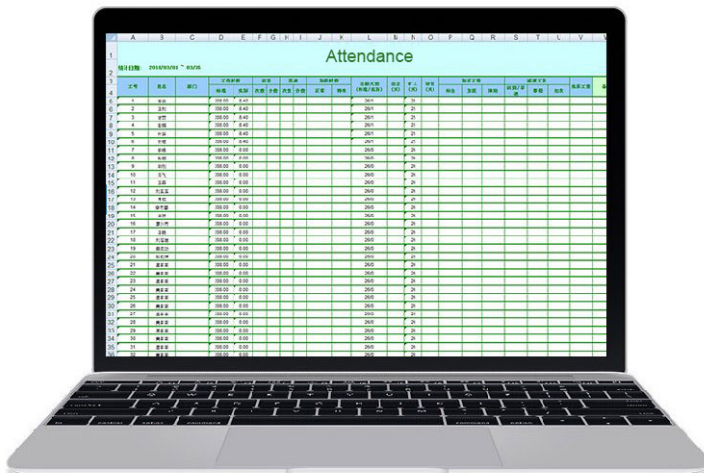
Tamper alarm function

Swipe to open the door

Password opening

### Attendance data

Self-service report, free software installation





## Our service

- 1, All inquiries will be answered within 24 hours
- 2, professional manufacturer and supplier, welcome to visit our website and factory
- 3, OEM / ODM available
- 4, high quality, fashion design, reasonable and competitive price, fast delivery time
- 5, after-sales service:
  - 1), All products will have been strictly checked in house before packing
  - 2), All products will be well packed before shipping
  - 3), All of our products have 2-3 years warranty if the damage is not caused by man
- 6, faster delivery : About 1 ~ 5 days for sample order, 7 ~ 30 days for bulk order
- 7, payment: You can pay for the order via: T / T, Western Union, Paypal
- 8, Shipping: We have strong cooperation with DHL, FEDEX, TNT, UPS, EMS, Forwarder by SEA and By AIR, you can also choose your own forwarder.

## FAQ

**Q: 1. How can I place an order?**

A: Please indicate your needs by email. Then we will send you the offer as soon as possible, after your order has been confirmed, we will arrange the production as soon as possible.

**Q: 2. What about payment and shipping?**

A: T / T, Paypal, Western Union.

Customers can choose by sea, air or express (DHL, FedEx, TNT UPS etc.)

**Q: 3. How can I get a sample to check the quality?**

A: We could provide you with free sample and the freight cost paid by you.

**Q: 4. How long can I expect to get the samples?**

A: It depends on the quantity. Normally 3-7 days for 5000 pieces and 7-15 days for 100,000 pieces

**Q: 5. Can your products be customized?**

A: Almost all of your products are customized, including material, size, thickness and printing. OEM orders are welcome.

**Q: 6. Are you a trading company or a factory?**

We are one of the largest manufacturers of RFID cards / NFC tags / RFID keybods / RFID bracelet, RFID reader and access control products in China for over 20 years.

## ABOUT GOLDBRIDGE

As a one of leading manufacturer and exporter of RFID products in China, We have been in this field for 20 years already. We have rich production and exportation experience on RFID products. Our strength products are: rfid card, rfid Keyfob, rfid wristband, rfid tag and various rfid reader. We are also the access control solution provider.

MORE >>



## ABOUT OUR FACTORY

Established in 1999, Shenzhen Goldbridge has witnessed the technological innovation from rfid card to rfid tag, the overall change of market products in the past 20 years, and registered "Shenzhen Goldbridge Industrial Co., Ltd." in 1999.

At present, Goldbridge has developed into a National High-Tech Enterprise, which is specialized in the integration of production, market and research. Starting from the PVC cards and RFID cards factory with only 66 workers, Goldbridge has accomplished the successful transition from traditional manufacturing industry to IOT technology enterprise (RFID technology development).



With the accumulation of dozens of software copyrights and utility new inventions and patents, Goldbridge has been rewarded as "National High-Tech Enterprise", "Shenzhen High-Tech Enterprise", and has become an integrated enterprise which focuses on research, production and market. Meanwhile, by adopting the "Military + School + Family" corporate culture concept, accompanied by the continuous innovation of business model and marketing model, plus the B2B, B2C platform and excellent sales team, Goldbridge sells its products all over the world.



