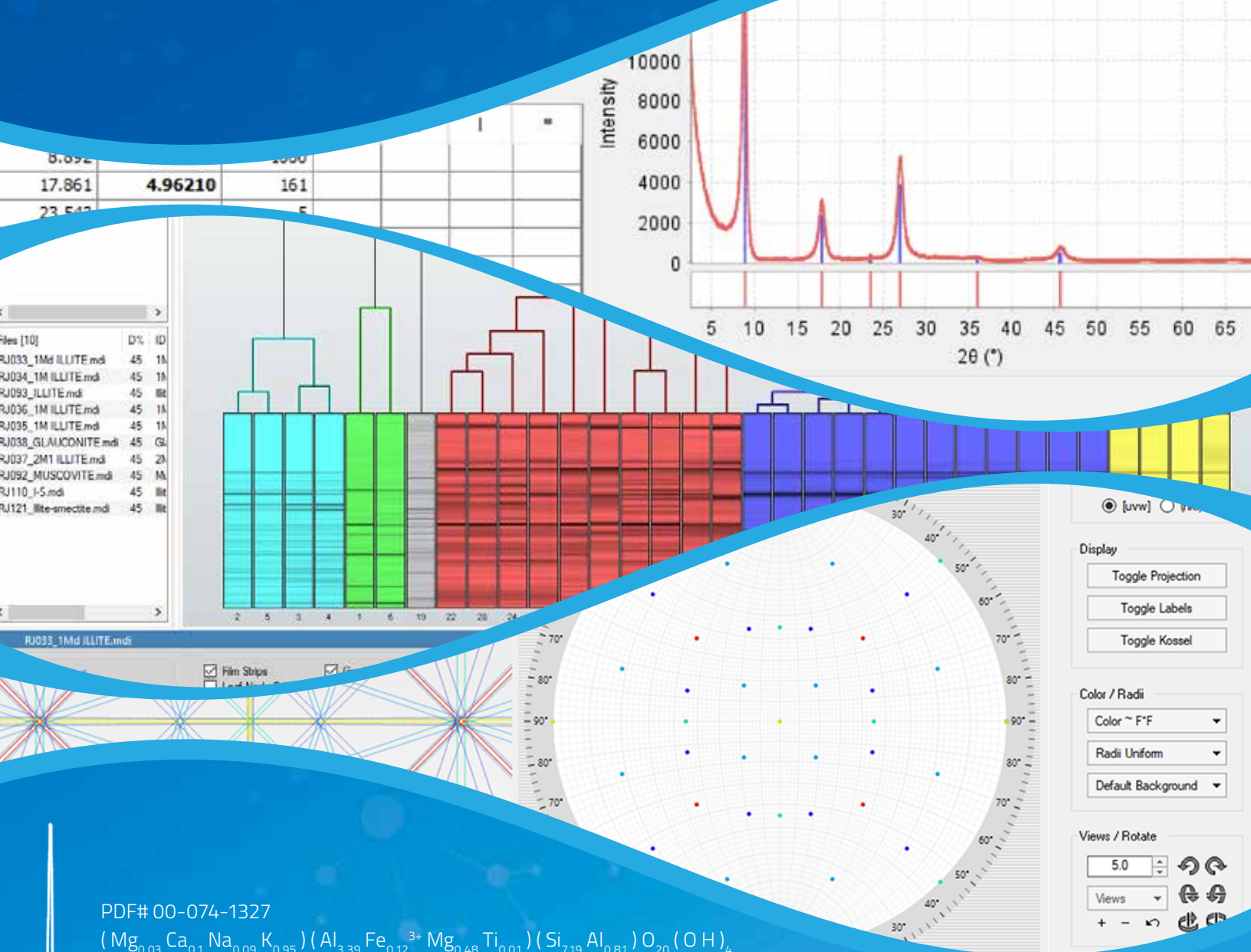


# 2024 - 2025 Sales Catalog

The Powder Diffraction File™ (PDF®)  
& JADE® Software



PDF# 00-074-1327

$(\text{Mg}_{0.03}\text{Ca}_{0.1}\text{Na}_{0.09}\text{K}_{0.95})(\text{Al}_{3.39}\text{Fe}_{0.12}^{3+}\text{Mg}_{0.48}\text{Ti}_{0.01})(\text{Si}_{7.19}\text{Al}_{0.81})\text{O}_{20}(\text{OH})_4$   
Illite-smectite (70/30) ordered (ISCz-1)

S. Hillier, A. Dosen

## Our collaborative partners include:

**Cambridge Crystallographic Data Centre (CCDC)** Cambridge, UK - Cambridge Structural Database (CSD)

**FIZ Karlsruhe - Leibniz Institute for Information Infrastructure (FIZ)**  
Karlsruhe, Germany - Inorganic Crystal Structure Database (ICSD)

**National Institute of Standards and Technology (NIST)**  
Gaithersburg, Maryland, USA

**Material Phases Data System (MPDS)**  
Vitznau, Switzerland - Linus Pauling File (LPF)

## PDF Databases - Why We Are The Best!

- More data, higher quality, more content, many types of solid-state reference data
- The world's largest solid-state collection of minerals, metals and alloys, polymers, active pharmaceuticals, and commercial materials
- The world's largest and most diverse (by formula) collection of inorganic structures
- The world's largest collection of modulated structures
- Extensive bibliographic collections - thousands of journals, hundreds of thousands of authors
- Standardized data, nomenclature, and structural classifications plus brand names, trade names, mineral names, zeolite names, and common names of commercial materials
- Identify materials accurately by utilizing the PDF's extensive subfile system that classifies materials by chemistry and application
- New data is contributed annually by highly qualified grantees from around the world
- PDF products are compatible with major diffraction vendor's software



Quality Management System Certified  
to ISO 9001:2015 by DEKRA

ICDD, the ICDD logo, PDF, Materials Data, JADE, Denver X-ray Conference, Denver X-ray Conference logo, and Materials Data-JADE-SM-WPF logo are registered in the U.S. Patent and Trademark Office. Powder Diffraction File, MDI, and the MDI-Materials Data logo are trademarks of the JCPDS-International Centre for Diffraction Data. ©2024 JCPDS-International Centre for Diffraction Data.

## THE INTERNATIONAL CENTRE FOR DIFFRACTION DATA (ICDD®)

is a non-profit scientific organization dedicated to collecting, editing, publishing, and distributing powder diffraction data for the identification of materials. The membership of the ICDD consists of worldwide representation from academe, government, and industry.

## TABLE OF CONTENTS

<b>Downloads and Budget Options</b> .....	<b>1</b>
<b>What's New</b> .....	<b>2 - 3</b>
<b>ICDD Products</b> .....	<b>4 - 15</b>
• PDF-5+	
• PDF-5+ Server Edition	
• JADE Pro	
• Toolkit	
• Other JADE Options	
• JADE Features	
• Sleeve/Sleeve+	
• PDF-4/Axiom	
• PDF-4/Minerals	
• PDF-2	
• Which Database is Right for You?	
• Preferred Computer Specifications	
<b>InSession and Newsletter Signup</b> .....	<b>17</b>
<b>Licensing Options</b> .....	<b>18 - 19</b>
<b>Website Resources</b> .....	<b>20</b>
• Purchasing Products	
• ICDD Licensed Distributors	
• ICDD Education - XRF - XRD - Rietveld Courses	
• ICDD Conferences - Denver X-ray Conference, Pharmaceutical Powder X-ray Diffraction Symposium	
• Resources - Advances in X-ray Analysis, <i>Powder Diffraction Journal</i>	
• Grant-in-Aid	
<b>Ordering/Shipping Fast Facts</b> .....	<b>21</b>

## ONLINE RESOURCES

Visit [www.icdd.com](http://www.icdd.com). Learn from reference articles, technical bulletins, tutorials, and instructional videos. Some tutorials and webinars focus on the capabilities of the PDF database, while others illustrate methods used to analyze pharmaceuticals, polymers, and minerals. It is free to search and browse documents from ICDD's Pharmaceutical Powder X-ray Diffraction Symposium (PPXRD) and the ICDD Spring Meetings. You get open access to over 1,000 full publications from *Advances in X-ray Analysis (AXA)* - the proceedings of the Denver X-ray Conference® (DXC). Try the Powder Diffraction File (PDF) Search and search using chemical name, formula, and elements to suggest which ICDD database product is right for you.



# THE POWDER DIFFRACTON FILE IS AVAILABLE FOR **DOWNLOAD!**

GET YOUR 2025 PDF DATABASE BY  
DOWNLOADING FROM THE CLOUD

BENEFIT FROM NO SHIPPING COST  
AND REDUCED DELIVERY TIME!



PDF-5+



PDF-2



PDF-4/MINERALS



PDF-4/AXIOM



## LICENSE OPTIONS TO FIT YOUR BUDGET!

- Extended multi-year license terms - Let us know what you need!
- Customized license for a 1 to 9-year license term
- 15% discount for new PDF-5+ and JADE Pro Bundles
- One-stop shopping: align PDF and JADE renewals for one billing and shipment
- PDF-2 10-year license - prepaid package
- PDF-5+Scholar - 10-year license for Academics
- PDF-4/Axiom 6-year and 9-year license - prepaid packages
- **SAVE time and money with ICDD's PDF-5+ and PDF-4/Minerals Subscriptions**
  - ICDD's subscriptions keep your database up-to-date with renewal pricing
  - ICDD offers automatic PDF-5+ and PDF-4/Minerals renewal shipments for convenience
  - Can't accept automatic shipments? ICDD will send a PDF-5+ or PDF-4/Minerals renewal reminder to keep you up-to-date with your subscription

Contact [info@icdd.com](mailto:info@icdd.com) for more information.

# WHAT'S NEW FOR 2024-2025



## Introducing Release 2025 of the Powder Diffraction File

PDF-5+

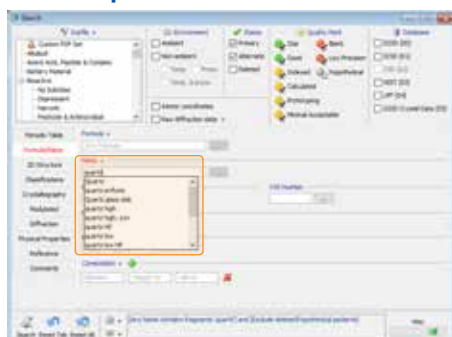
PDF-5+/Server Edition

PDF-4/Axiom

PDF-4/Minerals

PDF-2

### Autocomplete Name Search



Automatically suggests names based on user input using two methods:

1. Uses substring search to suggest similar names
2. Uses machine learning to suggest alternate spellings (if misspelled)

### New Mineral Classifications



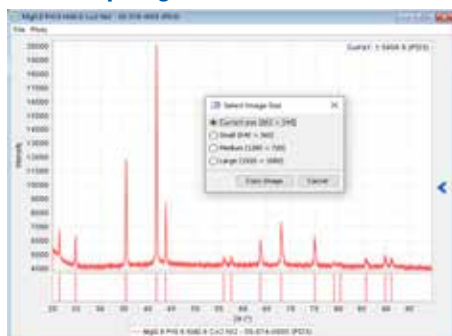
- IMA mineral symbols
- IMA mineral classifications
- Strunz-mindat classifications

### Dynamic Hit Counts



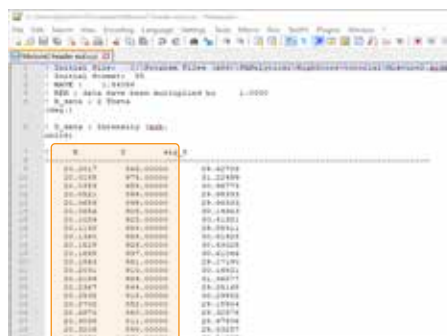
- Displays search hit counts based on selected criteria
- For data mining searches
- For matches filters

### New Graphing Features



- Unzoom button on right side of all x-y graphs
- Quickly save any graph using the right-click menu
  - » Includes 2D > 1D diffraction integration\*
- Select image resolution when copying or saving a graph image

### New Sieve/Sieve+ Features



- Supports importing STOE files
  - » 1D diffraction patterns
- Supports importing MarCCD image files\*
  - » 2D diffraction patterns
- Supports importing CIF's exported from Jana
- Automatically detects 2θ and intensity data if file format is not recognized

### New Sieve/Sieve+ Features (cont.)



- Bulk peak edit: Remove peaks directly from the peaks table using a right-click menu
- Add or remove peaks without having to reset the session
- Zoom to peak option for trace phase analysis
- Add phases to a Custom PDF Set
- Sieve+ project files now save and restore all simulation settings\*
  - » Geometry settings
  - » Profile settings
  - » Preferred orientation settings
  - » Internal standard settings
  - » Isotopic substitutions (neutrons)

\* PDF-5+/PDF-4 only feature

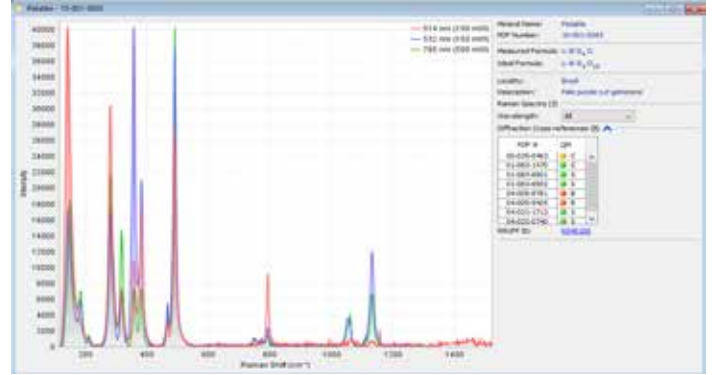
# WHAT'S NEW FOR 2024-2025

## Raman Search\*



- Dynamic searches for new Raman data
  - » Periodic table search
  - » Mineral name search
  - » Formula search
  - » Locality search
  - » Description search
- Search values highlighted in table
- Save and retrieve searches
- Import Raman spectra for single-phase ID
  - » Supports data processing

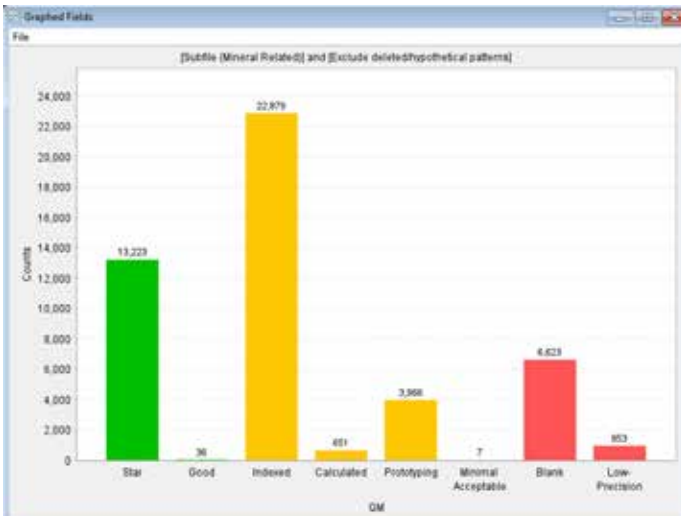
## Raman Entries\*



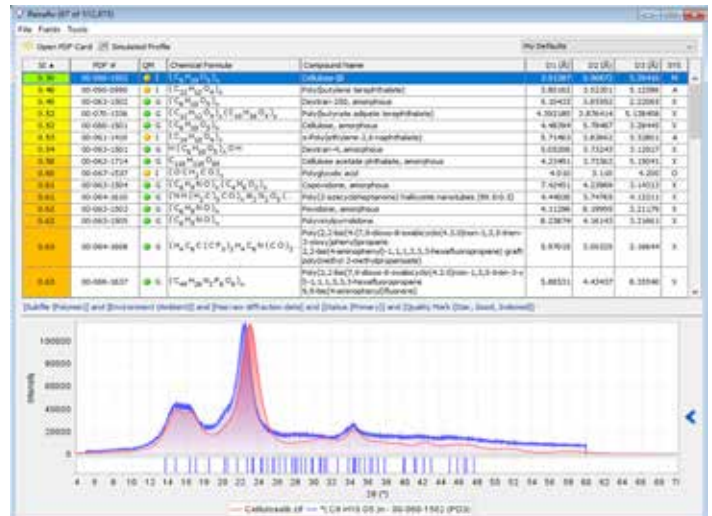
- Displays Raman data
  - » Mineral name
  - » Measured formula
  - » Ideal formula
  - » Locality
  - » Description
  - » Set 10-xxx-xxxx
- Displays Raman spectra
  - » Supports multiple wavelengths (user-selectable)
- Displays cross-references
  - » Raman patterns linked to XRD patterns
  - » RRUFF ID

## Color Coded Features

### Color Coded Bar Charts



### Color Coded Similarity Indexes\*



\* PDF-5+/PDF-4 only feature

# PDF-5+ 2025

THE POWDER DIFFRACTION STANDARD



Inorganic & Organic entries are combined into one powerful database with 1,104,100+ entries.

[www.icdd.com/pdf-5](http://www.icdd.com/pdf-5)

- 626,100+ entries with atomic coordinates
- Features 457,800+ entries for inorganic materials and 650,200+ entries for organic materials
- All entries have digital patterns for use in total pattern analysis
- 997,300+ entries have  $I/I_c$  values for quantitative analysis by Reference Intensity Ratio
- All entries are stored in a standardized format for easy search and interpretation
- All entries go through a rigorous editorial process to ensure quality

The screenshot displays the ICDD PDF-5+ software interface. The top menu bar includes File, Windows, and Help. The main window is divided into several panels:

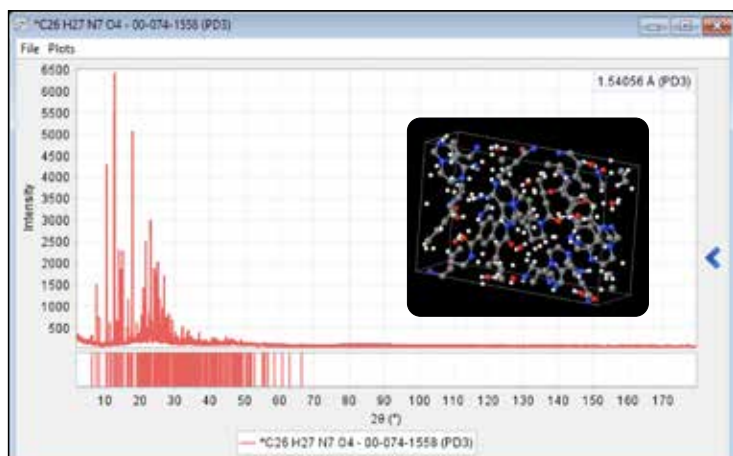
- Search:** A search bar and a list of search criteria including Formula Name, 2D Structure, Classification, Crystallography, Molecular, Chemical, Physical Properties, and References.
- Periodic Table:** A periodic table with elements highlighted in blue and red.
- Crystallography:** A table showing crystallographic data for various elements, including atomic number, weight, and radius.
- Diffraction Pattern:** A plot showing intensity versus  $2\theta$  (degrees) for a specific sample.
- 3D Model:** A 3D ball-and-stick model of a crystal structure, showing atoms as spheres and bonds as sticks.



# PDF-5+ 2025

## The Powder Diffraction Standard

PDF-5+ combines the world's largest sources of inorganic and organic diffraction data from crystals and powders into a single database.



Calquence®, acalabutinib dihydrate Form III, used to treat various types of non-Hodgkin lymphoma.

## KEY POINTS

- Rapid phase identification designed to support automated quantitative analyses
- Features 1,104,100+ entries with over 626,100+ having atomic coordinates
  - > 457,800+ entries for inorganic materials
  - > 650,200+ entries for organic materials
- Integrated data mining software
- All entries have digital patterns for use in total pattern analysis
- More than 997,300+ entries have I/I<sub>c</sub> values for quantitative analysis by Reference Intensity Ratio (RIR) method
- Combines powder and single crystal data
- Includes crystalline, semi-crystalline, and amorphous solid-state materials
- World's largest and most diverse collection of structures for inorganic and organic materials
- Extensive data mining is facilitated with 139 display fields coupled with 85 searches
- LPF entries have a link to mpds.io
- One (1) year license serviced by subscription

### PDF-5+ Purchase Options

PDF-5+ 2025	USB CODE	DOWNLOAD CODE	2024-2025 LIST \$	2024-2025 ACADEMIC \$
New - Single License	P5S25	P5L25	\$9,395	\$6,265
Renewal from 2024 to 2025	P5RS25	P5RL25	\$2,115	\$1,375
<b>PDF-5+ and JADE Pro bundle*</b>				
New - Single License	BUJPP5S25	BUJPP5L25	\$16,310	\$11,465
*Purchase a new license for PDF-5+ and JADE Pro				
<b>PDF-5+ 2025 Multi-year License*</b>				
Renewal - 3 year License	P5S26MR28	P5L26MR28	\$5,710	\$3,715
Renewal - 5 year License	P5S26MR30	P5L26MR30	\$8,990	\$5,845
<b>PDF-5+ Scholar 2025 (10-Year License Package)*</b>				
PDF-5+ New - Single License	P5S25	P5L25		\$6,265
Scholar Multi-year	P5SPS26MR30	P5SPL26MR30	NA	\$5,845
				\$12,110

**Save Money! Take advantage of ICDD's Site License - Request a quote today!**

PDF-5+ 2025 Site License*	USB CODE	DOWNLOAD CODE	2024-2025 LIST \$	2024-2025 ACADEMIC \$
New - Master License	P5S25M	P5L25M	\$9,395	\$6,265
New - additional License, each	P5S25C	P5L25C	\$2,115	\$1,375
Renewal - Yearly Master License	P5RS25M	P5RL25M	\$2,115	\$1,375
Renewal - additional License, each	P5RS25C	P5RL25C	\$855	\$590
<b>PDF-5+ 2025 Site/Multi-year License*</b>				
Renewal - 3 year Master Site License	P5S26MR28M	P5L26MR28M	\$5,710	\$3,715
Renewal - 3 year additional Site License, each	P5S26MR28C	P5L26MR28C	\$2,565	\$1,770
Renewal - 5 year Master Site License	P5S26MR30M	P5L26MR30M	\$8,990	\$5,845
Renewal - 5 year additional License, each	P5S26MR30C	P5L26MR30C	\$4,275	\$2,950
<b>PDF-2 to PDF-5+ Conversion</b>				
PDF-2 2024 to PDF-5+ 2025	P2524RSU25	P2524RLU25	\$2,115	\$1,375
PDF-2 2023 to PDF-5+ 2025	P2523RSU25	P2523RLU25	\$4,230	\$2,750
PDF-2 2022 to PDF-5+ 2025	P2522RSU25	P2522RLU25	\$6,345	\$4,125
PDF-2 2021 to PDF-5+ 2025	P2521RSU25	P2521RLU25	\$8,460	\$5,500

\*Please see product policies on pages 18 and 19



# PDF-5+ SERVER EDITION

## *The Network Shareable PDF*

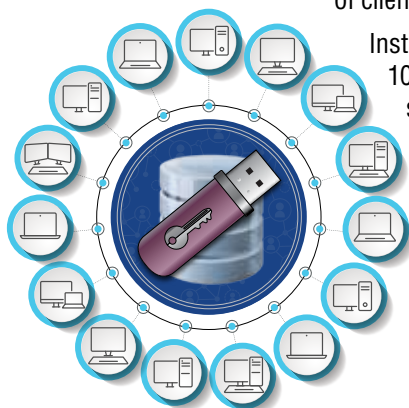
## Extend the Power of Your Database Built for Teams of Ten or More

Workplaces and work habits have evolved from just a few years ago, and this database licensing model provides the flexibility that large organizations and academics need to meet the varying demands of clients, teams, and students.

Install on your server and as many computers as you wish. A 10-User license provides access to 10 computers at a time and floats among an unlimited number of systems. Deployment to new hires is seamless. When it's time for the latest database, your renewal is simplified with one single product.

Ensure everyone in your organization is using the latest set of data with one shared floating 10 or more seat license. Additional benefits occur when access is granted to occasional use individuals without any added cost to your bottom line.

Your IT department will be happy as updates are streamlined, all while offering savings for your budget. If you need to provide access to 10 or more systems, please contact us at [sales@icdd.com](mailto:sales@icdd.com) to consider how our new Server License would work best for your team.



## PDF-5+ 2025

### *The Powder Diffraction Standard*

PDF-5+ combines the world's largest sources of inorganic and organic diffraction data from crystals and powders into a single database.

PDF-5+ contains 457,800+ inorganic and 650,200+ organic entries to ensure that you have the data you need for all of your phase identification needs. Every entry is editorially reviewed and assigned quality marks, so the curated PDF-5+ database allows users to do quantitative analysis by any of three methods: Rietveld Analysis, Reference Intensity Ratio (RIR) method, or Whole Pattern Fitting.





## *Include JADE Pro Analysis Software on Your Server Edition*

# JADE Pro

## The Analysis Software Professionals Choose

You need data you can trust, AND you need to find the best way possible to analyze your data. Now you can extend the power of your ICDD PDF-5+ Server Edition by including the highly regarded data analysis software JADE Pro. We created JADE to provide independent, unbiased results for peak search, whole pattern fitting, and Rietveld. JADE gets daily improvements and has grown to include an enormous list of valuable tools for your materials research and exploration. The power of JADE combined with the PDF-5+ Server Edition means a team can easily share a 10-seat license. The Server Edition can result in cost savings for your organization and a chance for you to extend the power to your team by providing access to BOTH the PDF database and JADE to as many individuals as you need. The database and software products offer the same functionality as the individual products. In coupling them in a 10 or more user server license, important resources are available to more team members, and everyone is in sync, all while reducing costs.

### KEY POINTS

- All-inclusive - Everything in JADE Standard and so much more
- Phase ID (Search/Match)
- Batch processing Whole Pattern Fitting (WPF) and Rietveld
- One-Click-Analysis™ for Whole Pattern Fitting (WPF)
- Pattern Indexing (All Crystal Systems)
- Rietveld Structure Refinement (Atomic Parameters)
- ab Initio Tools (Charge Flipping +)
- Cluster Analysis of Powder Patterns
- Hardware Independent - supports a wide range of diffractometers
- Floating Network License - can work as a shareable multi-seat license





# JADE Pro

All-inclusive

JADE Pro includes all of the features of JADE Standard, plus batch processing Whole Pattern Fitting (WPF) and Rietveld refinement tools that go beyond what is available in JADE Standard. JADE's One-Click-Analysis™ and the JADE Toolkit are only found in JADE Pro. Additionally, JADE Pro features a unique floating network license that allows access on one concurrent system at a time, so when a license is not in use, it is available to someone else in your organization. Discounted additional seats create access to more concurrent shareable licenses that work together.

## KEY POINTS

- All-inclusive - Everything in JADE Standard and so much more
- Phase ID (Search/Match)
- Batch processing Whole Pattern Fitting (WPF) and Rietveld
- One-Click-Analysis™ for Whole Pattern Fitting (WPF)
- Pattern Indexing (All Crystal Systems)
- Rietveld Structure Refinement (Atomic Parameters)
- Ab Initio Tools (Charge Flipping +)
- Cluster Analysis of Powder Patterns
- Hardware Independent - supports a wide range of diffractometers
- Floating Network License - can work as a shareable multi-seat license
- Discounted Additional Seats Available



# SO MANY ADDITIONAL TOOLKIT FEATURES!

Only Found in JADE Pro



## ED-XRF

For manual or automatic identification of elements and minerals.

## XRD Digitizer

Take a picture of an XRD plot and this tool will convert it to a digital format that you can now work with in JADE. Use advanced image editing options to tweak any imperfections or remove artifacts from your image.

## Charge Flipper + Solve Structure

For structure solution using the charge flipping method.

## Regression Analysis

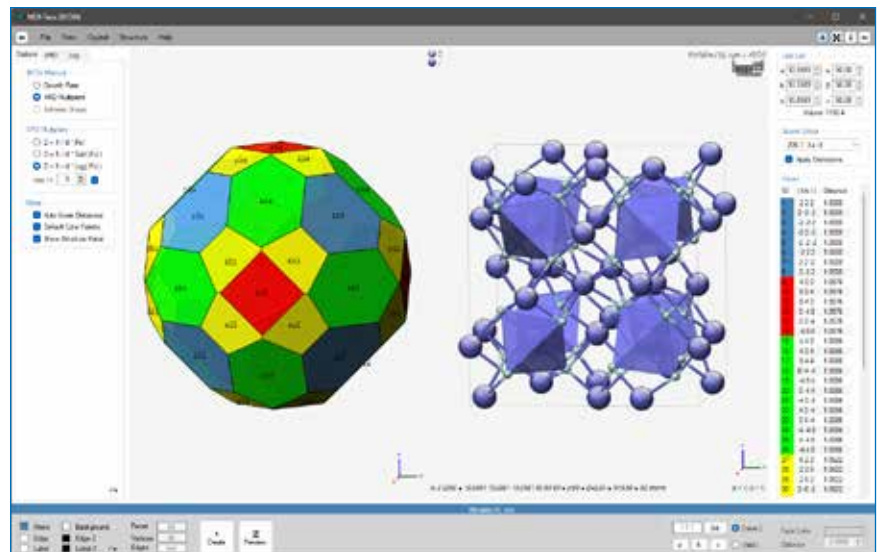
Easily perform regression analysis on data without leaving JADE Pro's Toolkit.

## BFDH Morphology

Create predicted crystal shapes based on the Bravais-Friedel-Donnay-Harker model. Other options include ability to promote the presence of certain (hkl)-faces by applying XRD multipliers from calculated structure intensities or calculating a Scherrer shape from fitted profiles.

## Microstructure Tool

Provides methods for the analysis of the residual stress and microstructure defects for various diffraction geometries and is applicable to cubic phases (FCC, BCC) following a profile fitting in JADE (D. Rafaja).





# EVEN MORE TOOLKIT FEATURES

Toolkit is found only in JADE Pro



## ◀ For Oriented Clays - ClaySim

For (001)-patterns. Performs simulations and analyses of oriented clays based on structure types introduced by R.C. Reynolds.

## MDI SizeStrain

Designed for crystallite size and micro-strain analysis using X-ray powder diffraction data. This Toolkit supports both Warren-Averbach and Williamson-Hall methods for crystallite size determination.

## 3D Scatter Plot

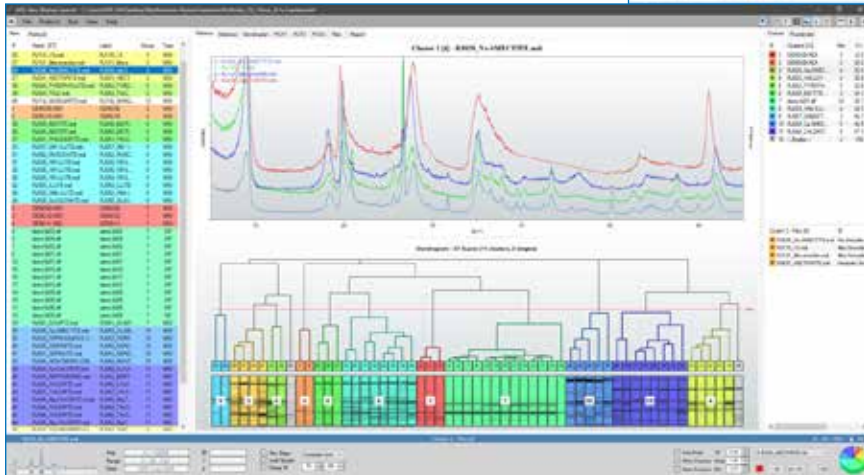
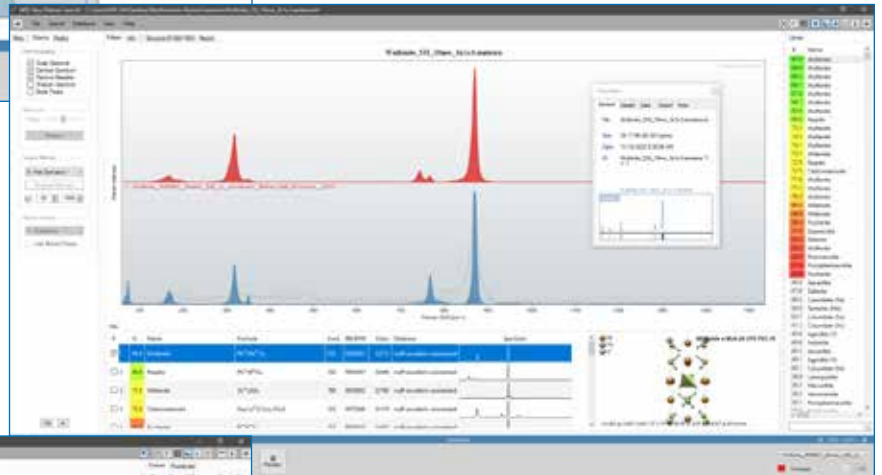
A scatter plot tool for xyz data sets from columnar data files.

## Raman Mineral ▶

Designed for the mineral phase ID from Raman Stokes spectra. Whole spectra correlation functions are used for finding similarity matches for single-phase and multi-phase spectra.

## Pattern Matching

Try the full Pattern Matching method used in both ROCKJOCK and ClaySim.

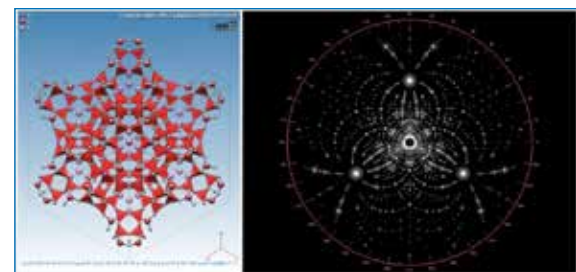


## ◀ Cluster Analysis with Dendrograms

View your clusters with automatic cluster color coding with Principal Component or Fuzzy Clustering. Streamline your analysis by adding reference patterns as cluster markers, recalling setup protocols for reproducibility and other correlation functions for determining pattern similarities.

## Area Detector Tool

Built to extract powder patterns from images obtained with flat area detectors, so that they can easily be analyzed in JADE Pro.

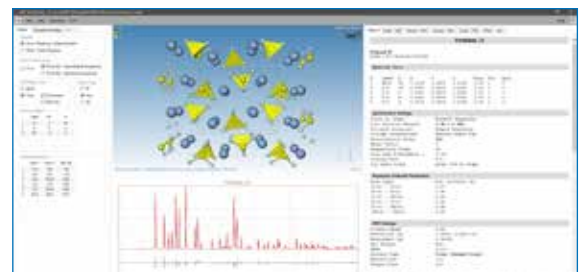


## ◀ Lave Visualization

Simulations, alternative structure visualizations and stereographic projections with the ability to export Adobe PDF booklets.

## Simulated Annealing ▶

An alternative direct space structure solution method (SA) designed for inorganic structures applying Coulomb interactions and repulsive potentials.



# JADE Standard

JADE Standard provides a more limited set of tools than JADE Pro, but without the annual updates and renewal costs.

Available in three levels -

Level 1: Base

Level 2: A - Phase ID (S/M)

B - WPF + Rietveld

Level 3: Add both Phase ID (S/M) and WPF + Rietveld

Included with all levels of JADE Standard -

Simulation and Visualization - Simulate powder patterns to create your own custom database. Visualize a structure in 3D with motion. Visual cues throughout to better help you and your team understand the materials you are analyzing.

## KEY POINTS - ALL LEVELS

- Reads all vendor pattern files
- Handles variable/fixed-slit data
- Auto peak search and multi-filter search
- Simulate powder patterns from crystal structures
- No annual renewal fee
- Individually licensed for workstations
- Hardware Independent - supports a wide range of diffractometers

## PHASE ID (SEARCH/MATCH)

- Found in Levels
  - 2A: Search/Match
  - 3: Search/Match and Whole Pattern Fitting

## WPF + RIETVELD

- Found in Levels
  - 2B: Whole Pattern Fitting (WPF)
  - 3: Search/Match and WPF



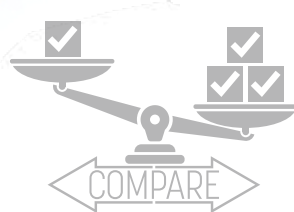
Level 1	Level 2 (A or B)		Level 3 ...or choose JADE Pro, and get it all and more!
Base	Base	Base	Base
	Phase ID (S/M)		Phase ID (S/M)
		WPF + Rietveld	WPF + Rietveld

**Phase ID (S/M) - JADE Standard** Level 2A or Level 3  
Profile-based Search/Match with minor and trace phase ID or search on a single peak. Ability to include chemistry filters and unit cell data as well as preferred-orientation.

**WPF + RIETVELD - JADE Standard** Level 2B or Level 3  
Quantify weight percentages and identify minor phases quickly and easily.

## JADE QA

A special build meant for production line Quantitative Analysis (QA) typically carried out by a technician. Requires a setup file created by an analytical scientist using JADE Pro. JADE QA runs independently of JADE Pro and was designed to extend the power of Rietveld Quantitative Analysis (QA) to those in your organization responsible for overseeing consistencies in production who may or may not have a background in XRD.



## Get More Power With JADE Pro

JADE is available in Pro and Standard

### JADE FEATURE LIST

	Pro	1	2A	2B	3
Intuitive, State-of-the-Art UI	✓	✓	✓	✓	✓
Reads All Vendor Pattern Files	✓	✓	✓	✓	✓
Smart Column Data Importer	✓	✓	✓	✓	✓
Merge Multi-Scans/Segments	✓	✓	✓	✓	✓
1, 2, and 3D Pattern Overlay	✓	✓	✓	✓	✓
Déjà Vu ID Similar Pattern Files	✓	✓	✓	✓	✓
Handles Variable/Fixed-Slit Data	✓	✓	✓	✓	✓
Multiple Display Axes and Any Diffraction Wavelength	✓	✓	✓	✓	✓
Zero Offset Correction and Theta Calibration	✓	✓	✓	✓	✓
Background Fitting/Batch Fitting/Removal	✓	✓	✓	✓	✓
Auto Peak Search and Multi-Filter Search	✓	✓	✓	✓	✓
Wide Variety of Report and Print Options	✓	✓	✓	✓	✓
Includes Starter Database	✓	✓	✓	✓	✓
ICDD PDF Database Access (as well as other databases)	✓	✓	✓	✓	✓
Multitude of Data Choices for Database Retrieval	✓	✓	✓	✓	✓
View Crystal Structures and Reflection Planes	✓	✓	✓	✓	✓
View Polyhedra, Calculate Bond Distances and Angles	✓	✓	✓	✓	✓
Simulate Powder Patterns from Crystal Structures	✓	✓	✓	✓	✓
Individual Analyst/Shared Work Environments	✓	✓	✓	✓	✓
Support for Custom d-I% list for Phase Overlay	✓	✓	✓	✓	✓
Excellent Profile Fitting and Batch Profile Fitting	✓	✓	✓	✓	✓
RIR Quant, Size & Strain and Residual Stress	✓	✓	✓	✓	✓
Quantitative Analysis	✓	✓	✓	✓	✓
Line-Based Unit Cell and Batch Refinement	✓	✓	✓	✓	✓
Structure Database Manager	✓	✓	✓	✓	✓
Profile Based Search/Match (S/M)	✓	✓	✓	✓	✓
Subfile + Chemistry + Unit Cell Filters in S/M	✓	✓	✓	✓	✓
Minor and Trace Phase ID	✓	✓	✓	✓	✓
Single Peak and Severely-Orientation S/M	✓	✓	✓	✓	✓
Solid-Solution and Isotypical Phase ID	✓	✓	✓	✓	✓
Auto-S/M in background thread on loading a pattern file	✓	✓	✓	✓	✓
Full pattern S/M on PD3 phases by correlation & similarity	✓	✓	✓	✓	✓
WPF and Rietveld Refinement (Unlimited Phases)	✓	✓	✓	✓	✓
Gold Standard Quantitative Analysis	✓	✓	✓	✓	✓
Seamless Integration with Database Retrieval	✓	✓	✓	✓	✓
Auto-Loading of Structure Data from Database	✓	✓	✓	✓	✓
Combination of Phases with/without Structure Data Weight%	✓	✓	✓	✓	✓
Linking of Unit Cell, Phase Broadening Parameters	✓	✓	✓	✓	✓
Custom d-I% (hkl, FWHM, Skew) to Fit Clay Phases	✓	✓	✓	✓	✓
March-Dollase and Spherical Harmonics Orientation Function	✓	✓	✓	✓	✓
Amorphous Content with/without Internal Wt% Standards	✓	✓	✓	✓	✓
Atomic Occupancy and Bond Distance Constraints	✓	✓	✓	✓	✓
Polynomial and Spline Curve Background Fitting	✓	✓	✓	✓	✓



All levels of JADE Standard are perpetual licenses and sold without the benefit of updates or any of JADE Pro's extensive set of extra features, like the ability to share a license. Since it is a subscription, JADE Pro has a lower buy-in than JADE Standard.

If you have JADE Classic, there still may be trade-in value towards the purchase of a current version of JADE Standard or JADE Pro.

### Additional JADE Features Only Available in JADE Pro

	Pro
One-Click-Analysis™ - Phase ID and WPF/Rietveld Analysis	✓
Size and Strain Analysis (Warren-Averbach & Williamson Hall)	✓
Pattern Indexing (All Crystal Systems)	✓
Simulate Series of Powder Patterns from Crystal Structures	✓
WPF and Rietveld Refinement Batch Processing	✓
Rietveld Structure Refinement (Atomic Parameters)	✓
Atomic Occupancy and Bond Distance Constraints	✓
Fourier Map Tools	✓
Ab Initio Tools (Charge Flipping +)	✓
Cluster Analysis of Powder Patterns	✓
Floating (Shareable) Network License	✓
All Updates via Subscription	✓
Extract Patterns from Area Detector 2D Images	✓
Digitize Any XRD Plot Image	✓
Cluster Analysis Visualization Dendrograms	✓
Toolkit App Version of ClaySim	✓
Toolkit App for Microstructure Analysis	✓
Toolkit App for Structure Solver Workflow	✓
Laue Simulations and Visualization	✓
Toolkit App for Simulated Annealing	✓
Toolkit App for Regression Analysis	✓
Toolkit App for Pattern Matching	✓
Toolkit App for 3D Scatter Plot	✓

### Multiple Languages!

To better support diverse teams sharing a license of JADE Pro across their organization and to ensure consistent results regardless of language, JADE can switch on the fly to Chinese or Japanese languages.



# Sieve/Sieve+ 2025

## Search and Identify

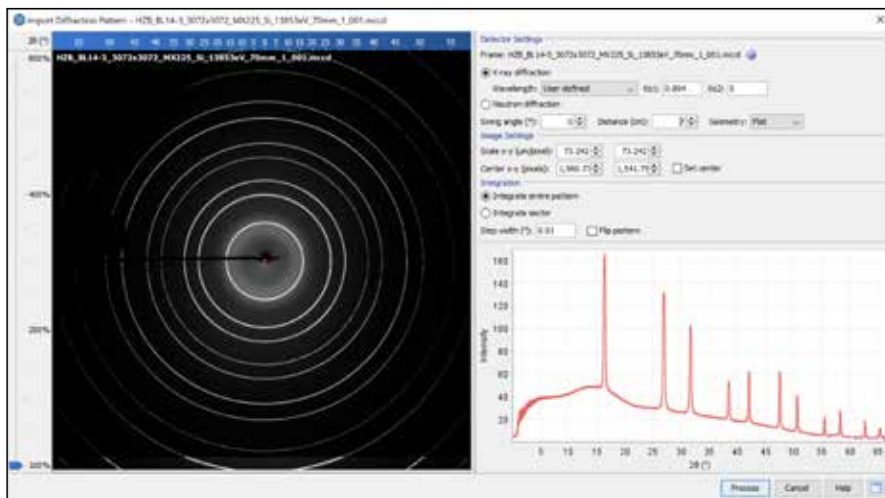
ICDD's search identification programs, Sieve for PDF-2 and Sieve+ for PDF-5+ and PDF-4, are designed to search and identify unknown materials. Sieve/Sieve+ are integrated into the ICDD databases to allow the use of the extensive data mining interfaces, searches, and sorts available to improve the accuracy and precision of the phase identification process.

## KEY POINTS

- Included free in all PDF databases
- Designed to search and identify unknown materials
- Complementary with most commercial software programs
- Match filter algorithms - better results, more accuracy
- Identify non-crystalline materials and complex multi-phase specimens
- Strength of Sieve/Sieve+ is evident in the analysis of minor and trace phases
- Supports X-ray, synchrotron, electron\*, and neutron\* data
- "Intelligent" RIR for semi-quantitative analysis\*

\* PDF-5+/PDF-4 only feature (Sieve+)

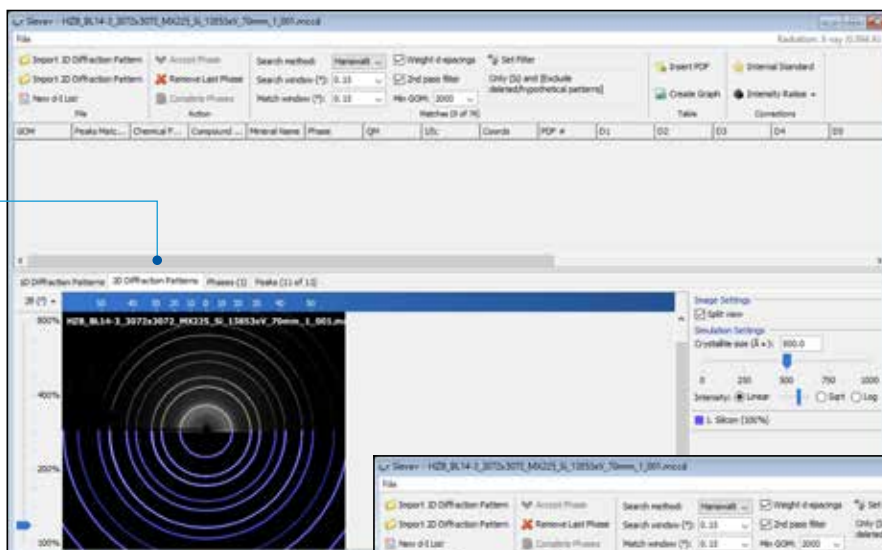
Sieve+ offers a variety of algorithms and options that allow users to optimize results for particular chemistries for both standard and non-standard diffraction systems.



2D XRD data provided by Dr. Manfred Weiss, HZB

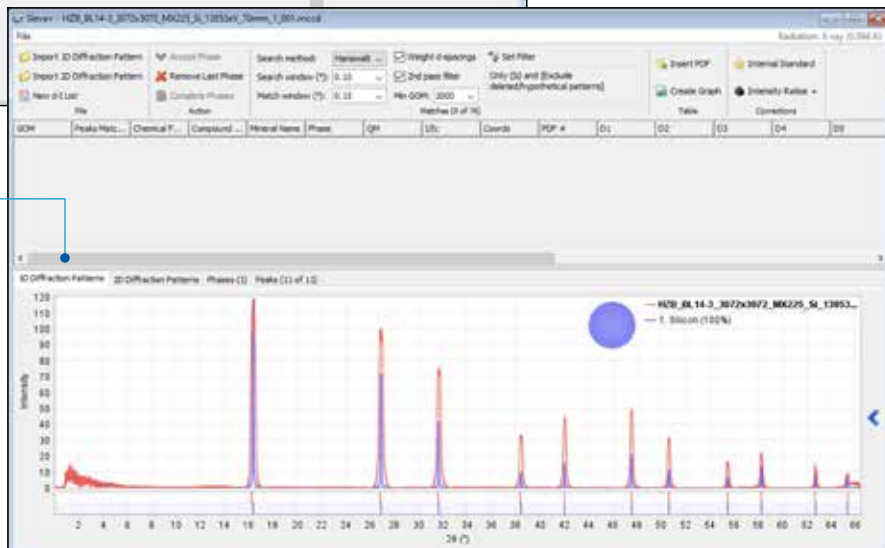
### 2D Diffraction Patterns

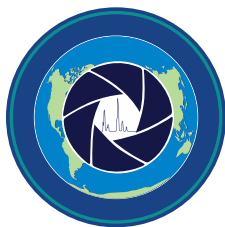
2D XRD pattern with Si phase identification overlay using Sieve+.



### 1D Diffraction Patterns

2D XRD pattern integrated to give a 1D XRD pattern with Si phase identification overlay using Sieve+.





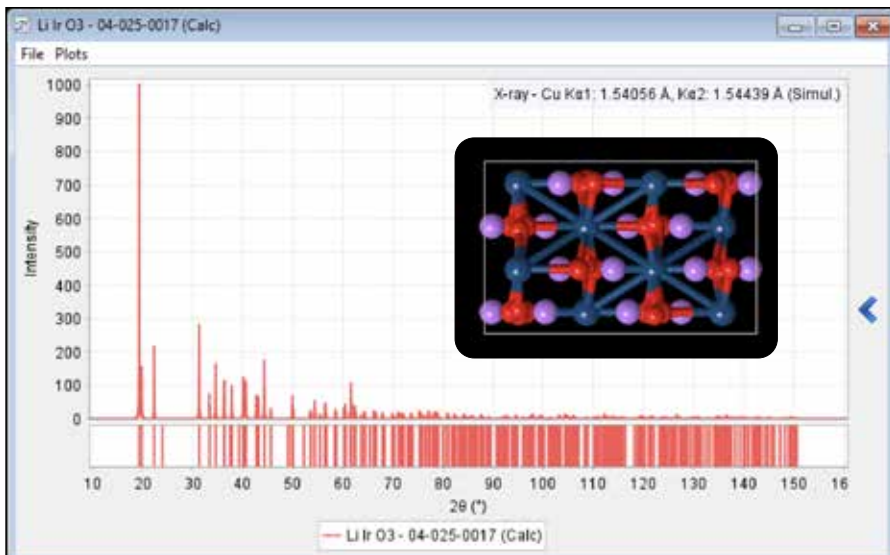
# PDF-4/Axiom 2025

## Quality Plus Value

PDF-4/Axiom is focused on identification and quantitation with data entries selected for benchtop users.

## KEY POINTS

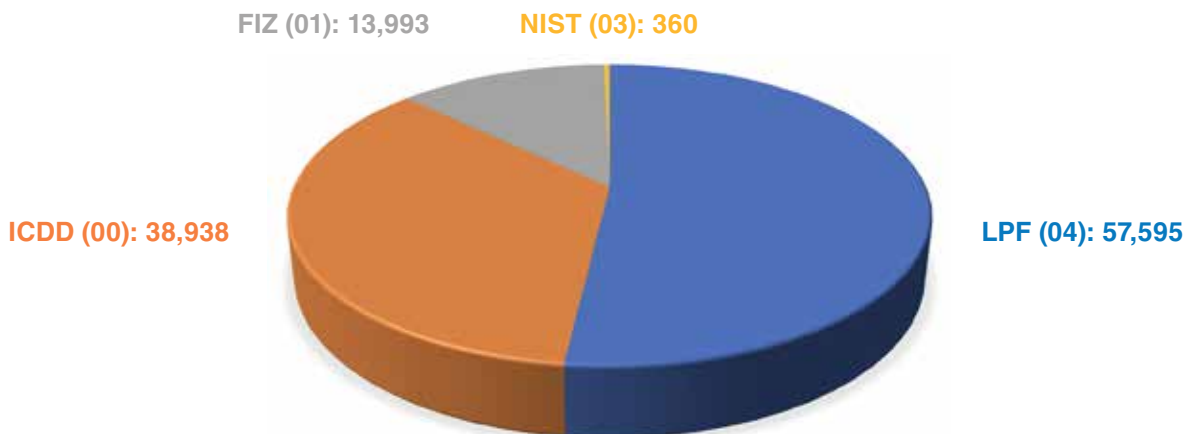
- Cost-effective
- Single License: Three (3) year license term
- Optional: Two (2) additional seats (three (3) year license term)
- Six (6) year and nine (9) year prepaid packages available
- New license available after term expires
- Featuring 110,800+ entries, including inorganic and organic entries
- 80,700+ entries with atomic coordinates
- Number of entries with I/I<sub>c</sub> values: 79,500+
- Extensive data mining is facilitated with 139 display fields coupled with 82 searches
- Data focused on ambient entries
- Fundamental mineral entries
- ICDD data mining software Sleve+ Included



β-Li<sub>2</sub>IrO<sub>3</sub>

## Database Sources

(See inside front cover for ICDD's collaborative partners)



## Axiom Purchase Options

PDF-4/Axiom 2025	USB CODE	DOWNLOAD CODE	2024-2025 LIST \$	2024-2025 ACADEMIC \$
New - Single License	AX4S25	AX4L25	\$3,715	\$2,665
Two Additional Seats (each seat: single PC installation)	AX4S25MS	AX4L25MS	\$1,050	\$540
<b>PDF-4/Axiom 2025 Packages*</b>				
PDF-4/Axiom - 6 years	AX4S6YR	AX4L6YR	\$7,430	\$5,330
PDF-4/Axiom - 9 years	AX4S9YR	AX4L9YR	\$11,145	\$7,995

\* Purchase two or three Single Licenses (Release 2025, Release 2028, and Release 2031)  
 – Each PDF-4/Axiom product is licensed for three (3) years  
 – Shipping fees for all databases billed on the original invoice

\*Please see product policies on pages 18 and 19



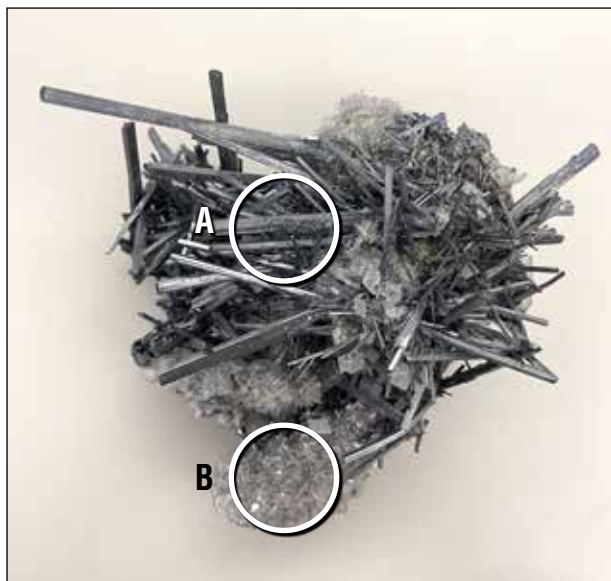
# PDF-4/Minerals 2025

## Comprehensive Mineral Collection

PDF-4/Minerals is the most comprehensive collection of mineral data in the world! Ninety-seven percent of all known mineral types, as defined by the International Mineralogical Association (IMA), are represented in the database.

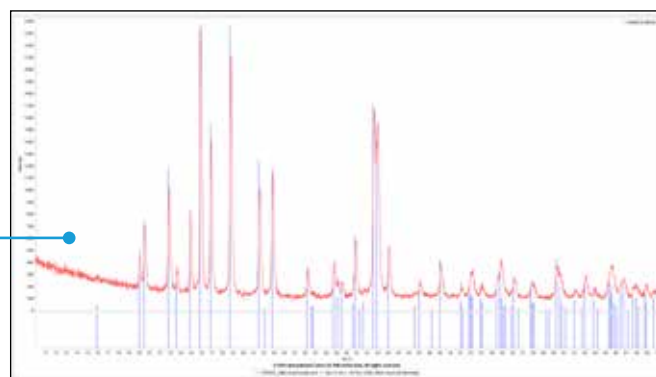
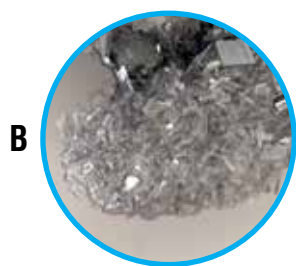
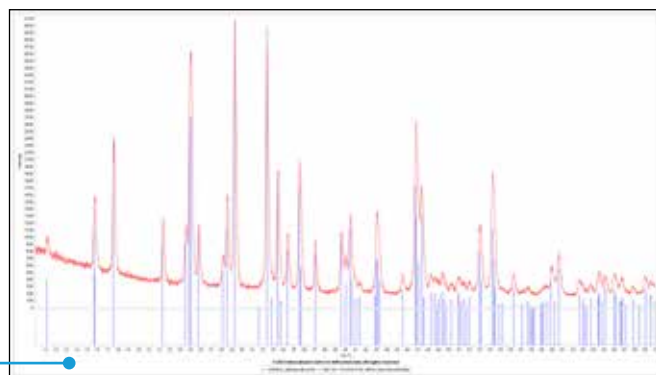
### KEY POINTS

- Rapid phase identification, plus support for automated quantitative analyses
- Features 53,400+ entries, including 43,900+ entries with atomic coordinates
- Integrated data mining software
- All entries have digital patterns for use in total pattern analysis
- More than 41,300+ entries have  $I/I_c$  values for quantitative analysis by Reference Intensity Ratio (RIR)
- Combines powder and single crystal data
- Classified by IMA designations
- A subset of the PDF-5+ database with all the features and capabilities, targeted to minerals and mineral related compounds
- Extensive data mining is facilitated with 139 display fields coupled with 84 searches
- One (1) year license serviced by subscription



Dark needles (Stibnite,  $Sb_2S_3$ ) on a matrix of clear platy crystals (Barite,  $BaSO_4$ )

Dark needle 04-016-4161  $Sb_2S_3$ , Stibnite



Clear crystal 04-002-3304  $BaSO_4$ , Barite

### PDF-4/Minerals Purchase Options

PDF-4/Minerals 2025	USB CODE	DOWNLOAD CODE	2024-2025 LIST \$	2024-2025 ACADEMIC \$
New - Single License	MN4S25	MN4L25	\$1,840	\$1,250
Renewal from 2024 to 2025	MNR4S25	MNR4L25	\$985	\$650
PDF-4/Minerals 2025 Multi-year License*				
Renewal - 3 year license	MNS426MR28	MNL426MR28	\$2,955	\$1,950
Renewal - 5 year license	MNS426MR30	MNL426MR30	\$4,925	\$3,250

\*Please see product policies on pages 18 and 19

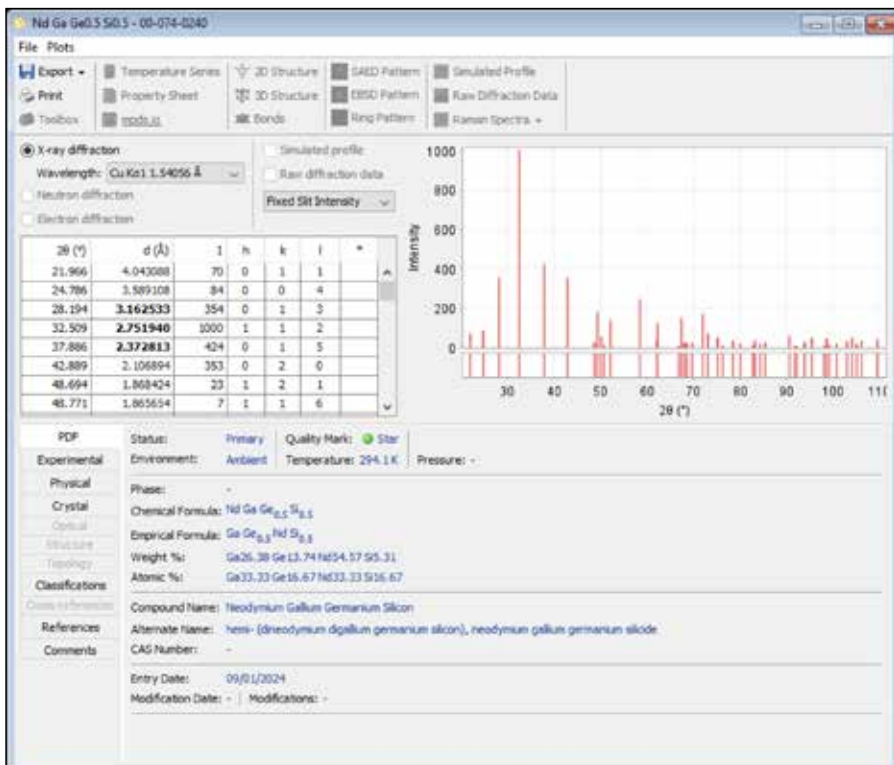




# PDF-2 2025

## Phase Identification + Value

PDF-2 is designed for inorganic materials analyses. In addition, common organic materials from ICDD are added to the database to facilitate rapid materials identification.



## KEY POINTS

- Features 359,400+ entries
- 252,600+ entries have I/I<sub>0</sub> values for quantitative analysis by Reference Intensity Ratio (RIR) method
- Integrated data mining software
- Sieve search-indexing software included
- Combines powder and single-crystal data
- Rapid data mining with our 60 display fields coupled with 75 searches
- Five (5) year license

Every Powder Diffraction File entry is editorially reviewed and assigned a quality mark.

We are proud to say  
 ICDD's Quality Management  
 System is ISO 9001:2015  
 certified by DEKRA



Intermetallic compounds display interesting physical and chemical properties. They are used in industry as shape memory alloys, as materials for hydrogen storage, catalysis, as well as magnetic, thermoelectric, or superconducting materials.

## PDF-2 Purchase Options

PDF-2 2025: Five (5) year License	USB CODE	DOWNLOAD CODE	2024-2025 LIST \$	2024-2025 ACADEMIC \$
New - Single License	C2S25PN	C2L25PN	\$9,395	\$6,265
Renewal from 2024 to 2025	C2S24PU25	C2L24PU25	\$2,115	\$1,375
Renewal from 2023 to 2025	C2S23PU25	C2L23PU25	\$4,230	\$2,750
Renewal from 2022 to 2025	C2S22PU25	C2L22PU25	\$6,345	\$4,125
Renewal from 2021 to 2025	C2S21PU25	C2L21PU25	\$8,460	\$5,500
<b>PDF-2 2025: Ten (10) year License Package</b>				
New - Licenses (2025 and 2030)	PD2S10YR	PD2L10YR	\$18,790	\$12,530
<b>PDF-2 2025 Site License*</b>				
New - Master License	C2S25PNM	C2L25PNM	\$9,395	\$6,265
New - additional licenses, each	C2S25PNC	C2L25PNC	\$2,115	\$1,375
Renewal - Yearly Master License	C2S24PU25M	C2L24PU25M	\$2,115	\$1,375
Renewal - additional licenses, each	C2S24PU25C	C2L24PU25C	\$855	\$590
<b>PDF-2 to PDF-5+ Conversion</b>				
PDF-2 2024 to PDF-5+ 2025	F2524RSU25	F2524RLU25	\$2,115	\$1,375
PDF-2 2023 to PDF-5+ 2025	F2523RSU25	F2523RLU25	\$4,230	\$2,750
PDF-2 2022 to PDF-5+ 2025	F2522RSU25	F2522RLU25	\$6,345	\$4,125
PDF-2 2021 to PDF-5+ 2025	F2521RSU25	F2521RLU25	\$8,460	\$5,500

\*Please see product policies on pages 18 and 19

# Which ICDD Database is Right for You?

	PDF-5+ 2025	PDF-5+ Server Edition 2025	PDF-4/ Axiom 2025	PDF-4/ Minerals 2025	PDF-2 2025
I work primarily with inorganic compounds	■	■	■		■
I work primarily with organic compounds	■	■			
I work primarily with minerals				■	
I work with electron diffraction/synchrotron	■	■		■	
I need to be flexible with my work location		■			
I need to do quantitative analysis					
Rietveld	■	■	■	■	
Reference Intensity Ratio (RIR)	■	■	■	■	■
Pattern Fitting	■	■	■	■	
I need a database with atomic coordinates	■	■	■	■	
How many entries are in the database?	1,104,137	1,104,137	110,886	53,434	359,407
How many entries are new?	42,239	42,239	2,847	1,495	9,645
<b>I am using vendor software for my analysis. Which databases will work with my vendor software?</b> Global software vendors provide search/match software that interfaces with our databases. Please check with your software vendor for compatibility.	■	■	■	■	■
What is the license term for the database?	1 year	1 year	3 years	1 year	5 years
Multi-year license available	■	■		■	
Site license available	■	■ <sup>†</sup>			■

<sup>†</sup> Requires a 10 concurrent user minimum license.

## System Requirements:

- Intel® Core™ 2 Duo processor (recommended minimum) or better
- 4 GB system memory

## JADE Standard/JADE Pro:

- Intel® Core™ i7, i5, or i3
- 8 GB system memory
- 24" or larger monitor - Your JADE experience will be richer on a larger screen.

## Hard Disk Space Requirements

- PDF-2 2025 – 5 GB
- PDF-5+ 2025 – 38 GB
- PDF-5+ Server Edition 2025 – 38 GB
- PDF-4/Minerals 2025 – 2 GB
- PDF-4/Axiom 2025 – 4 GB
- JADE Standard/JADE Pro – 400 MB

## Support Microsoft® Operating System:

- Windows® 7 SP1
- Windows® 8/8.1
- Windows® 10
- Windows® 11

**Do you have 10 or more concurrent users on a network? See pages 6 - 7 for Server Edition details.**



## ICDD's FREE Webinar Series Mastering the PDF Database and JADE Software

Learn the potential of Powder Diffraction File and JADE from ICDD's and Materials Data's experts and developers. Take an hour to build your confidence and productivity.



## Our Experts Teach You:

**Quantitative Phase Analysis with Cements**

**Raman Search Match**

**Clay Analysis**

**Data Mining in the Powder Diffraction File**

**Navigating a Powder Diffraction File Entry**

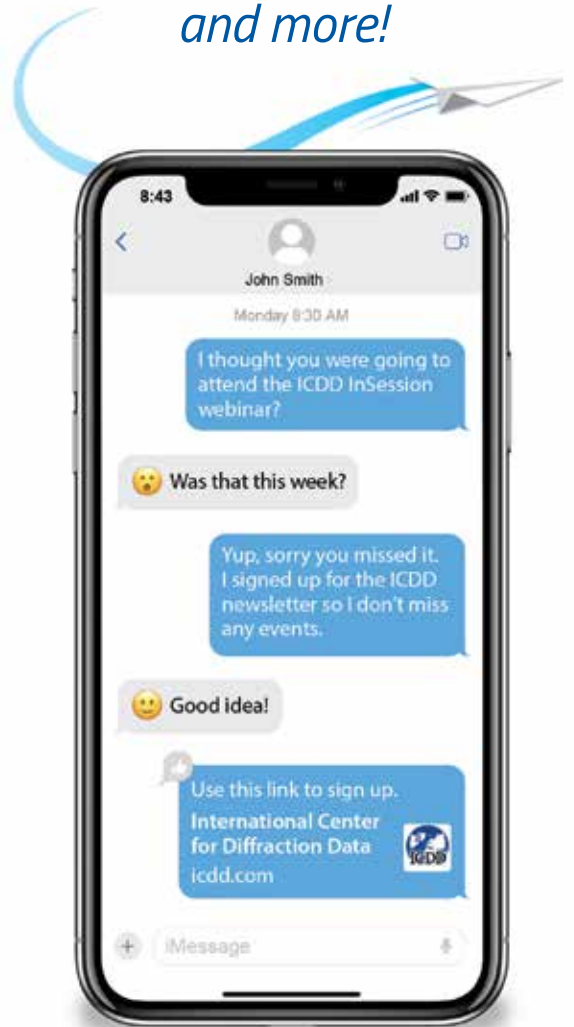
**and more**



Visit [www.icdd.com/in-session](http://www.icdd.com/in-session) to register for live webinars or view previous ones.



*Stay up-to-date with  
ICDD events, product  
information, news,  
and more!*



***Sign up today!***



## License

ICDD single user databases and software products are licensed for use on a single PC. Database and software licenses grant end-users a limited, nonexclusive, and nontransferable license to access the contents of the product for personal or internal business purposes; and to download such contents on the hard drive of a single computer, as needed, to facilitate data processing. It cannot be installed, accessed, or displayed on more than one PC without purchasing additional licenses or a multi-user server license (see pages 6-7 for server license information). License terms vary by product.

**Installation & Registration:** ICDD databases require registration to comply with the legal requirements of our collaborative agreements. Registration is required upon installation. This will ensure that your database license will correspond closely with your product subscription. Please note that your product subscription is based on the month of the original invoice, not the date of the license registration key. The integrated registration software will guide users through the registration process. The registration information can be sent to ICDD using the internet (preferred), email, fax, or mail. A registration key for the full license will be sent to the user within 48 hours of receipt of the registration information (Monday through Friday). If you have not heard from ICDD within 48 hours, contact us noting that it is a second request. You can contact ICDD by email: [registration@icdd.com](mailto:registration@icdd.com); or phone: 610.325.9814.

**Registration License Key:** Registration is required upon installation. The license key is issued on the date of registration and will allow access to the database in accordance with the purchased product license term.

Contact ICDD for PDF-5+ registration information - [registration@icdd.com](mailto:registration@icdd.com)

**Database License Term:** This is the amount of time available for access to the purchased database (see License terms).

**Product Subscription:** The PDF-5+ and PDF-4/Minerals, as well as all database site and multi-year licenses, are serviced by subscription. All subscriptions are based on the original invoice date. This means that PDF-5+ and PDF-4/Minerals renewals, site licenses, and multi-year licenses are due on the month of the original invoice. For example, if your original invoice was in May 2024, then your renewal will be due in May 2025.

**PDF-2:** The license term for PDF-2 with Sleve is five (5) years.

**PDF-4/Axiom:** The license term for PDF-4/Axiom is three (3) years.

**PDF-5+ and PDF-4/Minerals:** are licensed for one (1) year. ICDD offers a subscription service that provides automatic renewals for your PDF product(s). Prior to the expiration of your license, ICDD will automatically invoice and ship your PDF-5+ and PDF-4/Minerals renewal based on your original invoice date. If you cannot take advantage of the automatic subscription, contact [sales@icdd.com](mailto:sales@icdd.com).

**NOTE:** When renewing your PDF license, ICDD recommends that you contact ICDD or your software vendor to determine your data analysis software requirements.

### RELEASE 2025

#### LICENSE TERMS

Product	License Term
PDF-2	5 years
PDF-4/Axiom	3 years
PDF-5+*	1 year
PDF-4/Minerals*	1 year

\* Serviced by subscription featuring automatic annual renewals.

## Product License Policies

### Academic Pricing Policy

An academic price is awarded to degree-granting (Assoc., B.S., M.S., Ph.D.) institutions and organizations that provide resources for student's course work that are affiliated with the degree-granting institution. Institutions may be required to submit documentation to verify eligibility. Please consult individual product pages for eligible products.

### Site License Policy

ICDD's standard site license policy is designed for a multi-user laboratory to facilitate multiple licenses of the PDF-2 or PDF-5+ databases at a single site. A single site is defined by the building where the database will be installed. Multiple users in different buildings need to purchase separate site licenses for each building.

A standard ICDD site license includes the purchase of a Master License, and the purchase of Secondary Licenses (discounted additional licenses). Customers may purchase an unlimited number of additional licenses at discounted pricing. The number of computers that will be running the database in a single building determines the number of licenses.

ICDD multi-user server licenses are software products that include ICDD's JADE Pro and/or PDF-5+. The server licenses are scaled to serve high-volume research environments (10-concurrent user license minimum required) and is a floating, remotely accessible, and network shareable license.

**Note:** PDF-4/Axiom and PDF-4/Minerals are excluded from site license options. PDF-2 and PDF-5+ cannot be combined in a single site license.

### Single License → Site License

Customers with a single license may add additional licenses to create a site. To qualify for additional license pricing, the single license must be current. If necessary, customers may need to renew their single license to the current release, then add an additional license to create the site.



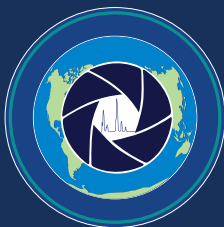
### PDF-5+

The Powder Diffraction Standard



### PDF-5+ Server Edition

Extend the Power of Your Database –  
Built for Teams of Ten or More



### PDF-4/Axiom

Quality plus Value



### PDF-4/Minerals

Comprehensive Mineral Collection



### PDF-2

Phase Identification + Value

## Site License Renewals

In order to take advantage of the site license renewal pricing, both the Master License and the Secondary Licenses of the database must be renewed yearly. To renew a site license, ICDD requires that the Master License and all Secondary Licenses be purchased concurrently on a single purchase order.

### Multi-year Site License

In response to customer requests, ICDD offers multi-year site licenses. The multi-year site license is offered as a convenience to our customers using site license pricing. This license is serviced by subscription and is available for a PDF-5+ site.

**Note:** (PDF-2, PDF-4/Axiom, and PDF-4/Minerals databases are not eligible).

### Multi-year License Policy

To assist customers with their yearly renewals, ICDD offers multi-year licenses that allow you to prepay for future renewals. The multi-year license renewal pricing provides savings on yearly license renewals, along with fixed pricing on the renewal for the purchased license term. Multi-year pricing is available for PDF-5+. If the price for these products increases during your multi-year license period, you will not be billed the difference.

To purchase a multi-year license, users need to purchase a new license to the current release of the PDF or renew their license to the current release using the current prices. Users may then purchase additional years for their license. All shipping charges will be billed on the original invoice. The multi-year license is serviced by subscription with yearly automatic renewals based on the anniversary of the original invoice date for PDF-5+. For each year in your multi-year license, you will receive the newest release of your PDF product. You will need to install and register your new product for each release.

Multi-year license renewal pricing for PDF-4/Minerals is offered as a convenience to our customers. It is not subject to the discount offered with our other multi-year licenses.

**Note:** PDF-2 and PDF-4/Axiom databases are not eligible for multi-year licensing options; however ICDD offers prepaid packages. Visit page 13 for PDF/Axiom and page 15 for PDF-2.

## PDF-5+Scholar Multi-year License for Academics 10-Year License



PDF-5+Scholar is an incentive available solely for our academic customers who qualify under ICDD's academic license policy.

PDF-5+Scholar is a ten (10) year multi-year license package for PDF-5+. It is identical to PDF-5+ in content and capability. The 10-Year license includes purchase of PDF-5+ (new or renewal to the current

product release), plus the PDF-5+Scholar multi-year license. During your 10-Year license, you will receive six (6) products of the newest release of the PDF-5+. The first five (5) PDF-5+ products will be licensed for one (1) year. The final sixth (6th) PDF-5+ product will be the PDF-5+Scholar product, which is licensed for five (5) years.

The 10-Year license is available on USB or download.

Like PDF-5+ and PDF-4/Minerals, the 10-Year license is handled by automatic subscription. The yearly automatic renewals will be shipped based on the anniversary of the original invoice for the 10-Year license. Shipping fees for all databases are billed on the original invoice.

**For more information, please visit:**  
[www.icdd.com/pricing-policies/](http://www.icdd.com/pricing-policies/)

Product warranty is on the preferred computer specifications associated with the product release. If you need to change your computer specifications, ICDD recommends that you reference the ReadMe.txt or product insert for your product release to check for compatibility.

## Take advantage of ICDD's prepaid packages:

**PDF-2:** 10-Year license – Page 15

**PDF-5+Scholar:** 10-Year license for Academics – Page 5

**PDF-4/Axiom:** 6-Year and 9-Year license prepaid – Page 13

# Visit [www.icdd.com](http://www.icdd.com) for more information

## PURCHASING PRODUCTS

[www.icdd.com](http://www.icdd.com) → [Products](#) → [Purchase Products](#)

### ICDD Licensed Distributors

ICDD works with a global network of licensed distributors to provide ICDD products throughout the world. Our network includes equipment manufacturers, regional distributors, and licensed software developers who program commercial data analysis programs that work seamlessly with our databases.

[www.icdd.com/distributors](http://www.icdd.com/distributors)

## ICDD EDUCATION

ICDD offers a variety of educational opportunities designed for both the new and experienced user. Our courses boast a high instructor-to-student ratio. Our experienced instructors have diverse scientific backgrounds, which give the attendees a blend of both theory and results-oriented practical experience. The week-long training of each course will set you up for success with a mix of lecture and hands-on sessions.

[www.icdd.com/icdd-education](http://www.icdd.com/icdd-education)

## 2025 EDUCATIONAL COURSES\*

### Practical X-ray Fluorescence

24 – 28 March 2025

[www.icdd.com/xrf](http://www.icdd.com/xrf)

### Fundamentals of X-ray Powder Diffraction

XRD I: 2 – 6 June 2025

[www.icdd.com/xrd](http://www.icdd.com/xrd)

### Advanced Methods in X-ray Powder Diffraction

XRD II: 9 – 13 June 2025

[www.icdd.com/xrd](http://www.icdd.com/xrd)

### Rietveld Refinement & Indexing

Fall 2025

[www.icdd.com/rietveld](http://www.icdd.com/rietveld)



\*Dates, location, and format of courses and conferences may be subject to change.

## CONFERENCES\*

[www.icdd.com](http://www.icdd.com) → [Conferences](#)

### 74<sup>th</sup> Denver X-ray Conference

The Bethesda North Marriott Hotel & Conference Center,  
Rockville, Maryland, USA

4-8 August 2025

DXC is the world's largest annual conference dedicated to the fields of X-ray analysis. Experts in the fields of X-ray diffraction and X-ray fluorescence gather for a week of workshops, technical sessions, and manufacturer's exhibits. DXC attendees will have access to sessions on the latest advancements in XRD and XRF.

[www.dxcicdd.com](http://www.dxcicdd.com)

### Pharmaceutical Powder X-ray Diffraction Symposium

XRD Training for the Pharmaceutical Scientist! ICDD sponsors this symposium designed to create a forum for the exchange of knowledge and cutting-edge ideas among those interested in the combined fields of XRD and pharmaceutical sciences. Visit the PPXRD website for news on the next symposium. Search and browse presentations from past PPXRD for free.

[www.icdd.com/ppxrd](http://www.icdd.com/ppxrd)

## RESOURCES

[www.icdd.com](http://www.icdd.com) → [Resources](#)

### Advances in X-ray Analysis

Register for free access to over 1,000 full publications from Advances in X-ray Analysis (AXA) - the proceedings of the Denver X-ray Conference (DXC). Access to AXA is provided by ICDD in cooperation with the authors and presenters of the DXC for the express purpose of educating the scientific community.

[www.icdd.com/axa-allvolumes](http://www.icdd.com/axa-allvolumes)

### Powder Diffraction Journal

ICDD's international journal, *Powder Diffraction*, focuses on materials characterization employing X-ray powder diffraction and related techniques. Cambridge University Press publishes it quarterly and with special topical issues. See freshly approved manuscripts online - since 2013, authors have utilized First View to speed approval of their manuscripts.

[www.icdd.com/pdj](http://www.icdd.com/pdj)

### Grant-in-Aid

Join ICDD's elite group of scientists who contribute experimental powder diffraction patterns to the Powder Diffraction File. One of our main objectives is to expand the range of reference materials by producing and cataloging high-quality diffraction patterns in our internationally renowned database, the Powder Diffraction File.

[www.icdd.com/grant-in-aid](http://www.icdd.com/grant-in-aid)

# Ordering & Shipping

## Contact Information

### ICDD Pennsylvania Office

<b>phone</b>	1.610.325.9814
<b>toll free</b> (USA & Canada)	1.866.378.9331
<b>fax</b>	1.610.325.9823
<b>email</b>	<a href="mailto:info@icdd.com">info@icdd.com</a>
<b>registration</b>	<a href="mailto:registration@icdd.com">registration@icdd.com</a>
<b>sales</b>	<a href="mailto:sales@icdd.com">sales@icdd.com</a>
<b>technical support</b>	<a href="mailto:support@icdd.com">support@icdd.com</a>
<b>web</b>	<a href="http://www.icdd.com">www.icdd.com</a>
<b>mail</b>	International Centre for Diffraction Data 12 Campus Boulevard Newtown Square, PA 19073-3273 USA

### ICDD California Office

<b>phone</b>	1.925.449.1084
<b>fax</b>	1.925.373.1659
<b>email</b>	<a href="mailto:mdj@materialsdata.com">mdj@materialsdata.com</a>
<b>technical support</b>	<a href="mailto:support@materialsdata.com">support@materialsdata.com</a>
<b>web</b>	<a href="http://www.materialsdata.com">www.materialsdata.com</a>
<b>mail</b>	International Centre for Diffraction Data DBA Materials Data 2551 Second Street Livermore, CA 94550 USA

## Easy Ways to Order

<b>online</b>	<a href="http://estore.icdd.com">estore.icdd.com</a>
<b>email</b>	<a href="mailto:sales@icdd.com">sales@icdd.com</a>
<b>fax</b>	1.610.325.9823

Please send us a sales order via fax, email, or mail. ICDD requires the name of the end user on all orders. Use product codes in your order, if possible. A convenient order/quote can be found on our website at:

[www.icdd.com](http://www.icdd.com) → [Products](#) → [Purchase Products](#) → [Order/Quote Form](#).

The Powder Diffraction File databases are licensed, copyrighted databases. In order to purchase an ICDD database license, an end-user must purchase the license directly through the ICDD or place an order directly through one of our licensed distributors ([www.icdd.com/distributors](http://www.icdd.com/distributors)).

## E-commerce

- Secure transmission using SSL encryption
- Customer online order history
- Online order tracking
- Email order confirmation
- Email shipping notification
- Customer satisfaction

## Pricing

The prices listed herein supersede all others previously published and are subject to change without notice. ICDD reserves the right to discontinue any product at its discretion. Visit our website at [www.icdd.com](http://www.icdd.com) or contact our Customer Service Department at [sales@icdd.com](mailto:sales@icdd.com) for the most recent product information and pricing.

## Return Policy

Products may be returned within 30 days from the invoice date for a full refund or credit (excluding shipping/handling). Products must be returned in original condition to qualify for a refund or credit. Registered products cannot be returned. Please complete a Return Merchandise Authorization (RMA) form to receive approval prior to returning product. Defective products will be replaced promptly but must be returned for testing.

## Warranty Policy

Customers' sole remedy for any defective Licensed Product shall be replacement of the Licensed Product, which right must be exercised by written notice given within 30 days of purchase. Defective products will be replaced promptly but must be returned for testing.

Product warranty is on the system requirements associated with the product release. If you need to change your computer specifications, ICDD recommends that you reference the ReadMe.txt or product insert for your product release to check for compatibility.

## Payment Terms

Wire transfers, credit cards (MasterCard, Visa, American Express), and checks in USD and drawn on USA banks are acceptable forms of payment. Letters of credit will not be accepted. Payment is due within 30 days from invoice date. Finance charges of 1.5% per month (annual percentage rate of 18%) may be applied to overdue balances.

## Licensing

ICDD licenses the use of the Powder Diffraction File, associated software, and JADE software packages. Licensing for the Powder Diffraction File, associated software, and JADE software packages are provided via USB, USB dongle, or Download. ICDD's product licenses are nontransferable and intended for use on a single computer. Server licenses are available for use on multiple PCs. Please refer to the sales descriptions and product policies for further information on licensing.

## Orders

Orders which include terms and conditions are reviewed prior to order acceptance. Once orders are accepted, they are processed on a first-in/first-out basis.

**NOTE:** Customers in Japan and South Korea, must order through an ICDD licensed distributor.

## Shipment

The ICDD ships via INCOTERM: EXW / EXWORKS

Import duties and all taxes are not included in pricing and are the sole responsibility of the customer. Shipment will be made by a commercial carrier chosen by ICDD. For your convenience, shipping charges will be added to all invoices. Shipments can be insured upon request; additional charges will apply.

## ICDD Licensed Distributors

[www.icdd.com](http://www.icdd.com) → [Products](#) → [Purchase Products](#) → [Distributors](#) or [www.icdd.com/distributors](http://www.icdd.com/distributors)

## Return Merchandise Authorization (RMA)

[www.icdd.com](http://www.icdd.com) → [Products](#) → [Purchase Products](#) → [Ordering Information](#) → [Return Policy](#) → [ICDD\\_RMA\\_form.pdf](#) or [www.icdd.com/assets/files/ICDD\\_RMA\\_form.pdf](http://www.icdd.com/assets/files/ICDD_RMA_form.pdf)



**ICDD Pennsylvania:**  
12 Campus Boulevard  
Newtown Square, PA 19073-3273, USA  
Tel: 610.325.9814 • Fax: 610.325.9823  
Toll Free: 866.378.9331 (US & Canada only)  
[www.icdd.com](http://www.icdd.com)



**ICDD California:**  
DBA Materials Data  
2551 Second Street  
Livermore, CA 94550, USA  
Tel: 925.449.1084 • Fax: 925.373.1659  
[www.materialsdata.com](http://www.materialsdata.com)