



ICF Product Directory

Our Product Directory is something we provide each year to help consumers stay updated on ICF-related products and services. This special advertising section includes a large array of products across the board including bracing, bucking, drafting and design, waterproofing, floor systems, truss and ledger connectors, vibrators, permeable pavers, wall systems, etc. It will provide you with updated contact information for companies and basic information about their products. These companies are ready for your business and look forward to making your next ICF build a success. Don't hesitate to reach out to them, and let them know you saw their products in ICF Builder Magazine.

Bracing

Giraffe

 www.giraffebracing.com  877-646-3615



Giraffe

Giraffe is the highest-quality ICF Alignment System on the market today. Our North American-manufactured systems feature innovative designs making them trouble-free and reliable for all your ICF projects. From residential to commercial, single-story to multi-story and regular walls to tall walls. Features like add-on components of 4', 5', 6', 8', 10', and 12' allow for any ICF wall heights from 8' to 24' tall. Masonry scaffold adapters help you reach any height, bracing components made with heavy-walled steel painted with epoxy powder-coated paint, and folding platform brackets have a unique snap-open alignment mechanism that allows beginners and professionals to complete their work safely and efficiently to the highest standards.



Hilltop Scaffolding and Bracing System

 www.hilltopmanufacturing.com  866-627-7720

The Hilltop ICF Scaffolding and Bracing system made by Hilltop Manufacturing is an outstanding choice for all ICF contractors. The lightweight aluminum strongbacks makes transport and setup easy.

The adjustable turnbuckle has no threads at the top of the brace. That means no concrete buildup on the threads, and trouble-free wall alignment. The system comes with a removable handrail support, and is available in all standard heights (8', 9', 10', or 12'). Tall wall and custom heights are available.

Our crating system is designed to hold 40 complete sets of bracing while the braces are compatible with all major brands of in-



sulated concrete forms. Pricing and additional information is available at the phone and website listed above.

Plumwall — One Bracing System for Low, Mid & Tall Walls

 www.plumwall.com  888-928-6676

Plumwall gives contractors one alignment system that's easy, engineered, and efficient — giving contractors one system for bracing 10, 12, 14, and 16 through to 24 feet.

The built-in time-saving features of Plumwall ICF Bracing also improve your job-site productivity.

The Plumwall All-In-One model is a one-piece brace that is easy for one-person to carry and ensures no missing parts. Pull two pins and you're ready to set up the brace without any extra pieces.

When the concrete is poured and final alignment is required, one-person using a cordless drill makes the adjustment at platform height, exactly where you need it.

Plumwall ICF Bracing offers stackable transport crates which hold 24 braces, for an organized way of transporting and storage.

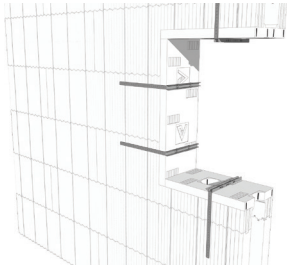
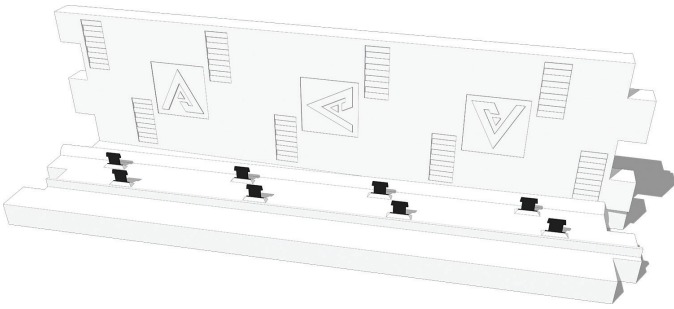
With customers around the world, Plumwall has been tried and tested within the ICF industry, providing an engineered product, worker safety and straight walls for 20 years.



Bucking

Alleguard - AmBuck

www.alleguard.com 877-470-9991



Launching this summer, Alleguard's AmBuck insulated window and door block-out system are stay-in-place buck formwork manufactured using Type II/ Type 2 closed cell, Expanded Polystyrene (EPS) panels for ICF construction walls. AmBuck insulated block-out system eliminates the

need for wood and vinyl block-outs while being a cost-effective and energy-efficient solution. It is an effective approach to creating block-outs in ICF walls and can enhance any ICF project. The AmBuck system ensures exceptional quality, and reduces construction time and prevents warping, checking, cupping, bowing, rotting, and splitting from occurring, that is seen in most conventional wood-based blockout systems.

Prebuck

www.prebuckproducts.com 616-309-6256



Prebuck technology offers the strongest, fastest, and smartest construction solutions available. Save time and money while building superior durability in every project. Specifically designed for direct contact with concrete and non-corrosive to metals, Prebuck products feature TimberStrand Strandguard

(LSL) engineered lumber treated with zinc borate for exceptional resistance to insects and decay. Prebuck products also feature MDI resin, the 100% waterproof bonding agent that turns to a durable plastic when cured. Combine these quality components with Prebuck's advanced engineering and you're guaranteed the most efficient construction technology available today.

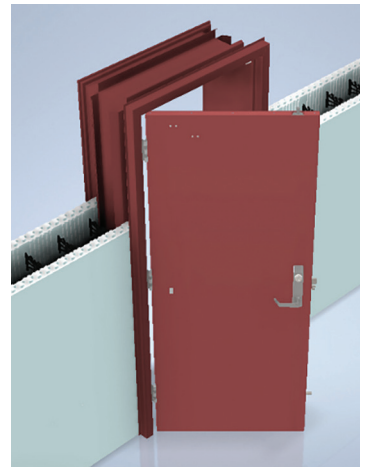
Stala Integrated Assemblies

www.stalaf framing.com 502-526-6127

As the pioneer of Integrated Framing Assemblies (IFAs) and with thousands of units installed, Stala is excited to announce a new product offering for the ICF construction industry.

ICC-500 Solutions-Tested, certified, labeled, and listed in accordance with ICC-500 (2020) Standard for the Design and Construction of Storm Shelters, our ICC-500 Solutions are steel door, frame, and hardware assemblies designed specifically for ICF storm shelter openings.

Stala IFAs continue to act as the preferred bucking system for ICF openings; the difference being that our ICC-500 Solutions are rabbeted and prepped for finish hardware. Once IFAs are set plumb and square, meaning storm doors and hardware swing directly from them. Specifying ICC-500 Solutions eliminates the need for an additional ICC-500 assembly as typically specified in division 8. Simplifying the opening design and installation even further, steel angles are no longer required where ICC-500 Solutions are utilized.



Drafting & Design

Finch Designs

www.finchdesigns.com 801-420-8246



Finch Designs is a drafting and design firm specializing in the design of ICF construction and the creation of high-performing, long-lasting, and energy-efficient homes. Employing modern technologies, we create 3D models of projects to enhance pre-construction fault detection and to improve our clients' visualization of their projects. Our array of services includes the conversion of wood-framed house designs to ICF, the production of photorealistic 3D renderings, virtual tours, and custom home design services. Our goal is to bring your vision to life. We aim to transform your ideas into reality while ensuring a smooth project execution, saving you from unnecessary headaches, time wastage, and expenditure. Contact us today for a free quote on your project and discover how Finch Designs can help you visualize and realize your next ICF project.





Innovative Drafting & Design

www.buildwithicf.com 208-315-6135

Innovative Drafting & Design LLC is a Boise, Idaho-based drafting firm that was formed in 2018 by Heather Hering-Brown, owner of Innovative Suite of Companies. Having been in residential construction and remodeling since 2004, Heather transitioned her business to ICF in 2016 and found it time-consuming and difficult to continually educate and work with local drafting firms. Based on that experience, the partners saw a need for an ICF-specific drafting company that could help its clients make the switch to ICF and expand the use of ICF construction across the country. The IDD team specializes in residential and multi-family ICF designs and have partnered with ICF-friendly engineering firms across the country in order to provide their clients with everything they need to build their ICF dream home. They strive to provide a simple process to homeowners and builders alike to navigate the hurdles experienced first-hand in switching to ICF. From hands-on experience stacking multiple homes, the IDD team has a different perspective when designing an ICF project, focusing not only on the efficient use of block but also on creating something that their clients will love for years to come.

Fire Resistant & Non-Combustible Products

Nexgen Building Products - Maxterra MgO

www.nexgenbp.com 727-620-3334



Maxterra Product Lineup:

- ♦ **Lightweight Wallboard** – Best replacement for paper-backed drywall over ICF. Score, snap, install, and finish like standard gypsum. Comes with class-5 finish. Abuse-, mold/mildew-, and fire-resistant.
- ♦ **Backer Board & Underlayment** – All-natural formulation, stronger than conventional backer board containing silica dust. Score, snap, and install.

Nexgen Building Products - Maxterra MgO manufacturers non-combustible, fire- and water-resistant products. Approved to ICC-ES standards. Maxterra is now available with 6 solutions for commercial and residential construction. Realize better performance over engineered wood sheathing, paper-backed or glass-faced gypsum, and cement-fiber board.

- ♦ **Decorative Panels** – 3/8-inch abuse-proof, scratch-proof panels with thousands of pre-finished options. Perfect for large common areas, corridors, hallways, etc.
- ♦ **Structural Sub-Floor** – Single-layer 3/4-inch sheathing eliminates multiple subfloor layers, including liquid gypsum over OSB. Achieve 24-inch floor joist spacing. Perfect for all ICF projects with multiple floors and multi-family projects.
- ♦ **Structural Wall Sheathing** – Fiber-reinforced MgO for walls and gables using wood or light-gauge steel framing. Fire / storm / water protection with increased impact strength in the event of flying debris.
- ♦ **Structural Roof Sheathing** – Fiber-reinforced MgO for protection against hail, storms, and wildfires. Product will stay dimensionally stable when wet.

Our products compliment ICF structures. Contact David Morris, 15 years professional ICF experience. Dealer & installer opportunities available: dm@nexgenbp.com

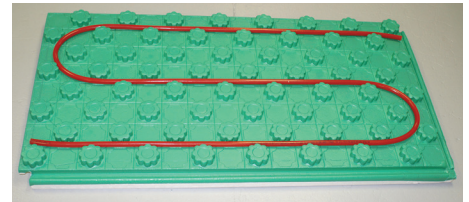


Flooring & Decking

Crete-Heat Floor Panel System

www.crete-heat.com 920-948-3738

Crete-Heat is the original modular floor panel system that combines insulation, vapor barrier



(10-mil polystyrene film), and a radiant floor tube holding grid into a single easily assembled product. Don't be fooled by all the imitators. Crete-Heat is the original 3" grid panel in all of North America and backed by actual testing. It greatly simplifies the installation of hydronic radiant floor tubing, cutting installation time by as much as two-thirds. The product is available in three thicknesses and three PSI strengths.

The regular Crete-Heat Insulated Floor Panel System is 2 7/8" in overall thickness, with 2" of solid EPS foam. It has been independently tested by Intertek Semco in Canada to provide an insulation value of R-10. The retrofit or above-grade panel is 2-1/8" in overall thickness, with 1" of solid EPS foam which provides an R-Value of 6. This same panel has 23 db sound reduction knobs available on the lower surface.

Each interlocking panel covers 2'x4' of floor space (8 sq. ft.) with fasteners for 3/8", 1/2", and 5/8" radiant tubing every 3" on center. The Ice Melt panel holds 3/4" and 1" PERT or PEX tubing. Higher density 40 and 60 PSI panels are available. Bundles of Crete-Heat are 25x49x21 and weigh 28 lbs. each.

Hambro D500 Composite Floor System

www.hambro.com 866-466-8769

The Hambro D500 composite steel joist system is specifically designed to meet the demands of residential and multi-residential projects, providing an advanced solution for elevated floor construction challenges. The D500 floor system utilizes reusable plywood forms, which can be reused on multiple stories. This not only enhances sustainability but also reduces material waste and cost. The speed of installation of this system, mainly used on load-bearing wall construction, allows it to be quickly accessible for other trades. It is strongly recommended by builders for its efficiency and reliability.

The Hambro D500 composite floor system offers numerous benefits, making it suitable for a wide range of designs and building options. Whether used in apartments, condominiums, senior care buildings, or even single-family homes, the Hambro D500 system stands out for its versatility and performance.

Fire Resistance: The system is fire-resistant for up to 3 hours and complies with UL/ULC/cUL standards, ensuring enhanced safety and peace of mind.



Sound Properties: Fully tested for sound properties, it boasts a Sound Transmission Class (STC) rating of up to 63, which indicates excellent noise reduction between floors.

TUFFBEAM & TUFFJOISTS by Metwood

www.metwood.com 540-334-4294

Metwood Building Solutions manufactures cold-formed steel structural beams (TUFFBEAM) and joists (TUFFJOIST) of incredible strength, capable of spanning greater distances with fewer vertical supports with less depth than equivalent wood. Utilize TUFFBEAM in preference to multiply conventional lumber, engineered wood, structural steel, or others. Utilize TUFFJOIST in preference to conventional lumber, engineered wood, bar joists, or others. Additional advantages include large openings for passage of utilities, with camber available to reduce deflection and the ability to attach wood, hangers, or drywall with self-drilling screws, and many more.

Metwood can utilize our TUFFBEAMS and/or TUFFJOISTS to design a suspended concrete slab system in many areas of a project. The structural components of the system install quickly with self-drilling screws to minimize onsite welding. Metwood can also fabricate the necessary support columns for the system, allowing for more design flexibility and complete system fabrication from one shop.



Footings

Proform HD

prinsco.com/proformhd 800-992-1725

Tired of time-consuming, traditional foundation footing methods? Proform HD by Prinsco is the innovative solution you've been waiting for. This heavy-duty, dual-wall corrugated plastic system streamlines the entire process, acting as the form, drain, and vent in one easy step.



Benefits:

- **Faster Installation:** The lightweight yet sturdy design speeds up your project timeline.
- **Superior Drainage:** Integrated drainage eliminates the need to install separate pipes, saving time and money.
- **Radon Mitigation:** Built-in venting helps protect the home from harmful radon gas.
- **Durability:** Weather-resistant and impact-resistant, Proform HD withstands tough conditions.

Upgrade to Proform HD and experience the future of foundation footings.

Tools & Accessories

Burmon ICF Connectors

www.burmon.com 888-218-0281

The Burmon ICF Connector range provides a versatile selection of products engineered to enhance the stability and integrity of Insulated Concrete Form ICF construction projects. These connectors are designed for easy installation, saving both time and money on site.

- **ICF Roof Truss Anchors:** Designed for connections between the sill plate and truss or rafter, as well as between concrete and truss.
- **ICF Wood Ledger Connectors:** Designed for floor systems, providing a secure connection.
- **ICF Joist Hangers:** These hangers accommodate most widths of joists, ensuring a versatile fit.
- **Buck Bracing:** This is used for bracing window and door openings, ensuring stability during construction.

burmon
BUILDING PRODUCTS



Fox Blocks HV Clips

www.foxblocks.com 877-369-2562

The Fox Blocks were innovators with the wire Fox-HVClip to replace wire ties and zip ties. The internal webs of Fox Blocks are designed to allow a Fox-HVClip to hook to the web horizontally and vertically, tightly holding the blocks together as the wall is assembled. Using Fox Blocks HV Clips saves contractors time and money, producing a STRONGER and STRAIGHTER wall assembly. Fox Blocks HV Clips are available through a local Fox Blocks dealer. To learn more about Fox-HVClips and other Fox Blocks accessories, visit our products page and resource library at FoxBlocks.com.



TRUEGRID Permeable Pavers

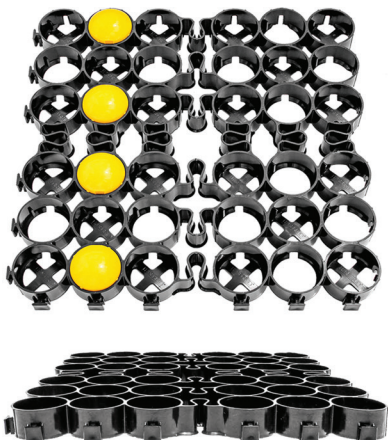
www.truegridpaver.com 855-355-4743 (GRID)

Heavy traffic and heavy loads? Need stormwater detention? Want to save land & money?

TRUEGRID Pro Plus permeable pavers are the engineer's go-to commercial pavement system for 100% pervious cover, stormwater detention, and management. TRUEGRID is trusted and proven in millions of square feet of heavy-use commercial and industrial lots. Our patented 100% pervious pavers are easy-to-install, virtually maintenance-free, and guaranteed.

Drive on the surface, drain, detain, and filter stormwater below. Build with eco-friendly TRUEGRID to eliminate detention ponds and utilize 100% of your land for more parking, buildings, and revenue.

Better than hardscape.



TRUEGRID Permeable Pavers

www.truegridpaver.com 855-355-4743 (GRID)

Need detention? The 100% permeable TRUEGRID paver system allows you to drain and detain water under your parking lot saving land and money. Filled with gravel or grass, TRUEGRID drains instantly and manages stormwater to prevent flooding while offering a natural, high-end aesthetic at a lower cost. Stronger than asphalt and as long lasting as concrete, TRUEGRID is H20/ HS20 rated and has a compressive strength of 8,000 psi.

Modular, made-in-the-USA from 100% post-consumer recycled HDPE, TRUEGRID is the sustainable paving alternative that gives you better performance, detention and 100% land use. Commercial, industrial and residential use.

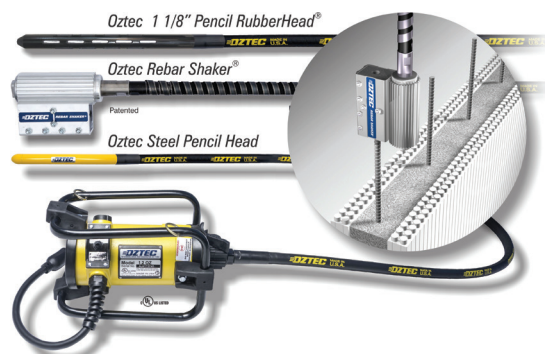


Oztec RebarShaker

www.oztec.com 800-533-9055

The Oztec RebarShaker is an innovative method of consolidating concrete in Insulated Concrete Forms. Placed over the top of vertical steel reinforcement, the RebarShaker vibrates at 10,000 — 12,000 vpm, ensuring excellent concrete consolidation along the entire length of the rebar. The RebarShaker allows ICF contractors to effectively consolidate the concrete without the risk of damaging the foam forms. The RebarShaker also tends to slowly rotate concrete around the rebar, packing concrete between the rebar and form, resulting in excellent bonding. Walls with wide rebar spacing will be more effectively consolidated using a combination of Oztec's internal flexible shaft vibrators and the Oztec RebarShaker.

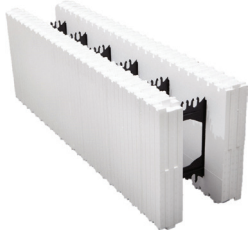
Oztec has also reintroduced its 1-1/8" RubberHead — available with an optional rubber coated extension to prevent entanglement in rebar. The patented design of the RubberHead provides greater effectiveness with fewer insertions. Oztec RubberHeads are job proven to be more effective than any other vibrator head on the market!



Wall Systems

Alleguard - Amvic ICF

www.alleguard.com 877-470-9991



Alleguard's Amvic Insulated Concrete Form is a user-friendly insulated concrete product with an innovative design, which increases the speed of construction, reduces labor costs, and provides the highest level of performance during and after installation. The powerful combination of the patented, reversible FormLock interlock, EPS composition, and modern web design results in the following benefits:

• Less gluing and tying are needed during installation

- Amvic ICF can generate as little as 1% construction waste, greatly reducing landfill-bound waste
- Ability to withstand internal vibration, ensuring a structurally superior wall
- Comes with fully reversible blocks



Amvic is one of the strongest ICF systems on the market as proven by the Canadian Construction Material Center (CCMC) with a form capacity strength of 856 psf. Building with Amvic ICF wall system in conjunction with our own rigid foam insulation product, SilveRboard, and our floor and roof solution, Amdeck, makes for a superior building. Alleguard and Amvic ICF delivers a complete solution for today's energy-conscious builder.

BuildBuck ICF Bucking

www.buildblock.com 866-222-2575

BuildBuck ICF Door & Window Bucking brings the insulation properties of EPS foam together with embedded plastic webs to create a strong seamless transition from ICF walls to door and window openings. BuildBuck is two-inches thick, providing an insulated barrier for all openings. The buck features three primary attachment areas across the face of the buck every 6 inches in the center and on each side as well as full-length attachment on each side. Foam guides properly align BuildBuck and the ICF blocks. A molded-in sealing member works with flashing to seal against moisture intrusion. The full length molded tape measure and cut lines makes cutting the buck to size simple and straightforward. BuildBuck is available for all 4", 6", and 8" forms.



BuildRadius

www.buildblock.com 866-222-2575

BuildRadius is a family of radius forms for use in ICF walls and pool construction. The BuildRadius forms create 2', 4', 8', 12', 16', and 20' arcs. Each of these blocks interlocks into any BuildBlock 6" product line and uses the standard BuildBlock webs maintaining 6" on center web spacing. The 2' and 4' arc radius forms can replace a corner block, creating a smooth curved corner with one form. Available in 6" widths initially, these forms are designed to provide options when designing unique areas in ICF homes and ease construction by eliminating the excessive cutting and strapping needed for field cut radius blocks.



Extrutech Form Panels

www.epiplastics.com 888-818-0118

Extrutech Plastics Inc. is now in its 32nd year of manufacturing bright white, easy-to-clean, interlocking wall and ceiling panels for the building industry. The Extrutech Stay-in-Place Concrete FORM System is Ideal for high moisture areas and built to stand up to harsh environments. These FORM panels provide a bright white, smooth, non-porous, finished wall for both interior and exterior walls. The panels are available as a 6" thick P624 panel, and 8" thick P824 panel; both are 24" wide and available as kit form to your job requirements or cut lengths of 4 feet to 20 feet. Their tongue-and-groove design allows for fast and easy installation. Extrutech's FORM panels are durable, colorfast, and resistant to impact and UV damage. These panels are highly resistant to moisture-related issues, are recyclable, have a 15-year warranty, and are made in the USA, ISO9001:2015 QMS certified and ICC ESR-4250 Listed.



Fox Blocks Insert R8-panel

 www.foxblocks.com  877-369-2562

How do you improve an Insulated Concrete Form wall that already outperforms conventional wall assemblies in all climates?

You move the concrete mass toward the living side of the wall. This unbalanced R-value will allow the concrete mass to be closer to the living area of the conditioned space for a more comfortable and energy efficient building.

The Insert R8-panel is a single part that is added to the Fox Blocks to boost the already high R-value another R8!



Hobbs Vertical ICF

 www.hobbsverticalicf.com  866-904-9255

- 40% concrete savings, 50% labor savings, and +”R30” insulation value with our contour wall design
- Contour or flat wall concrete core design options
- Panels available in “Exposed Stud” with built-in drainage plane or “Stucco Ready”
- No specialty ICF bracing or equipment required with Hobbs VICF
- Knock-down design saves shipping cost compared to ICF blocks
- Engineered shop drawings provided for each project
- One-on-one virtual installation training and on-going support provided at no additional charge
- No taping, gluing, or wire tying, and components are pre-cut to your wall height
- Strongest corners of any ICF
- Expert custom plan design services
- Family owned and doing business throughout North America since 2005



 **HOBBS**
Vertical ICF Wall System

Check out our new updated website, www.hobbsverticalicf.com.

IntegraSpec

 www.integraspec.com  800-382-9102

Introducing IntegraSpec ICF (Insulating Concrete Forms), a net zero and green building material for power savings, safety, and soundproofing. IntegraSpec ICF is the ultimate solution for building durable,



energy-efficient, and eco-friendly structures. IntegraSpec ICF offers unparalleled benefits, making it the premier choice for construction in any climate zone or storm-prone region. The unique design of IntegraSpec ICF ensures exceptional insulation, leading to significant reductions in heating and cooling costs. Its robust structure provides unmatched durability and resistance to extreme weather conditions, ensuring your building stands strong for many generations. Moreover, IntegraSpec ICF is made from recycled plastic materials and is fully recyclable, promoting environmental sustainability. Whether you are constructing residential, commercial, institutional, or industrial buildings, IntegraSpec ICF delivers superior performance, comfort, and longevity. Choose IntegraSpec ICF for a future-proof, eco-friendly building solution that meets today's needs and anticipates tomorrow's challenges.

Nudura

 www.nudura.com  866-468-6299

 Nudura ICF Forms are high-tech industry-leading insulated concrete forms that have proven technologies to make building easier and faster. Our Insulated Concrete Forms provide design professionals, architects, homeowners, and contractors the freedom and versatility to design and build a structure the way it was envisioned.

The Nudura wall-building system empowers you to build more energy-efficient, sustainable, and comfortable homes or structures than those built with more traditional materials like wood. Create the project of your dreams with our line of ICFs and accessories that speed construction times and offer endless building applications.



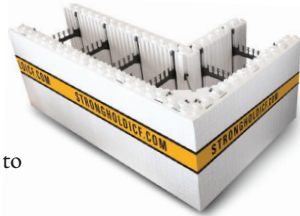
Stronghold

www.strongholdicf.com

877-433-1880

Stronghold: details that matter to the installer.

- Reversible Interlock EQUALS Less Material and Labor Waste
- Web Locking Teeth EQUALS No Vertical Wires, No Gaps
- Thicker Web Flanges EQUALS Happy Screw Fastening
- Full 16-inch Length Webs EQUALS No Form Settling
- Extra Thick Foam Panels EQUALS No Bulging, Flat Walls
- Dual Corner Diagonal EQUALS Strongest Corner Blocks
- Reinforced Corner Tape EQUALS Blowout Insurance
- Both Folding and Fixed Blocks EQUALS Cost Effective Solutions
- Both Horz. and Vert. Corner Straps EQUALS Happy Siding Attachment
- 4-, 6-, 8-, 10-, and 12-inch Forms EQUALS Sizes You Need
- Adjustable Center Ties EQUALS Full Strength Cut Forms
- Removable Webs EQUALS Solution for Very Heavy Rebar
- Horz. and Vert. Cut Lines EQUALS Faster Cutting & Installs
- Folding Blocks That Lock Open EQUALS Perfectly Sized Walls
- On-Site Support EQUALS Happy Contractors



SuperForm

www.superform.com/icf 877-627-3555

SuperForm is a trusted name in the world of insulated building products and ICF companies. Our family-owned company embodies the values of accountability, trust, quality, and sustainability. From our insulated concrete forms to EPS insulation, and a range of other solutions, builders can depend on SuperForm for their projects due to the unmatched strength and block features such as:

- A unique square knob design that offers 35% more surface friction fit than other systems on the market.
- Our thick red tie flanges (7.25mm – 5/16th) that are made of virgin polypropylene, resulting in a higher, more consistent tensile strength.
- A standard block sizing of 4 foot long x 1 foot high, making building and estimating extremely simple.
- The built-in anti-lift technology locks all blocks down by putting concrete pressure on it. This eliminates the need to tie or lock down each row.
- 1-inch repeating cut lines that allow you to match any plan on the jobsite and helps reduce waste.
- 6-inch tie spacing that provides up to 33% more tie per block, resulting in one of the strongest blocks on the market.
- Our updated corner tie and bracket that mitigates one of the biggest challenges ICF installers face: corner blowouts.

SuperForm ICF is able to maximize builders' budgets and time during ICF installation, as minimal accessories are required. Consider SuperForm ICF for your build. Visit www.superformicf.com/icf to learn more.

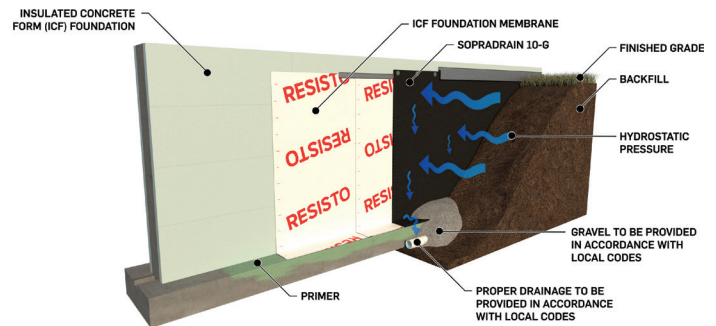


Waterproofing

Resisto ICF Waterproofing

www.resisto.us 855-227-7850

Established in 1996, Resisto, a division of Soprema, specializes in the manufacturing of construction materials for residential and commercial buildings. Resisto's ICF Membrane is a self-adhesive waterproofing membrane specifically designed for ICF foundations. This SBS-modified bitumen membrane has a trilaminate polyethylene woven facer which makes it puncture resistant. Additional products offered by Resisto that protect your foundation are drainage boards, fluid-applied waterproofing, and primers, making Resisto a great single source for all your waterproofing needs. Resisto is dedicated to its customers by providing representation and expert technical support from coast to coast.



Rub-R-Wall Aqua Waterproofing

www.rpcinfo.com 770-410-1545

Rub-R-Wall Aqua Waterproofing is a single-component spray-applied polymer membrane. It is a less than 20 grams per liter VOC water-based coating. Rub-R-Wall Aqua is UV stable and was designed with the ICF contractor in mind. Rub-R-Wall Aqua has many beneficial features of Rub-R-Wall Waterproofing. Rub-R-Wall Aqua is available in 5-gallon pails, 55-gallon drums, and 350-gallon totes. Rub-R-Wall Aqua also has accompanying mastic to address gaps and voids in a substrate. For information on Rub-R-Wall Aqua Waterproofing or any Rubber Polymer Company product, please visit our web site at www.rpcinfo.com.

