

Laboratory Furniture

Contents

Fume Hood

MS/MV Series	-----	Page	152
LDS Series	-----	Page	153

Clean Bench

ADS Series	-----	Page	155
AHS Series	-----	Page	156

My Hood

MS / MV Series

Safe, Easy-operation, Space-saving Fume Hoods

- Selectable interior material: stainless steel (for organic solvents) or hard polyethylene (for acid)
- Easy installation with simple wiring and plumbing
- Air is efficiently exhausted through the air flow regulation device
- Standard equipped with water valve, lighting lamp, power sockets and waste liquid recycling tank
- Various options such as blower unit, exhaust chamber and decorative panel
- Benchtop type available which can be used on laboratory table

Specifications

Model		MS90C	MV90C
Exhaust pipe	Exhaust damper	Stainless steel, inner diameter ϕ 150, outer diameter ϕ 152, Fixed by flange	Hard polyethylene, inner diameter ϕ 160, outer diameter ϕ 165, Fixed by flange
	Matched Pipe	Hard polyethylene, inner diameter ϕ 160, outer diameter ϕ 165	
Flourescent light		Single phase AC 220V 20W single light	
Water exhaust pipe		Hard polyethylene / Single tube fixed (outer diameter ϕ 40, Inner diameter ϕ 31)	
Material	Exterior	Cold-rolled steel plate, chemical proofing powder coating, with adjusting casters	
	Interior	Hard polyethylene	
	Working face	Hard polyethylene	
	Glass door	Toughened glass 5mm. Close and open (up and down) with balance block	
Safety structure		Brake block to prevent door from falling down / Door opening extent sticker	Brake block to prevent door from falling down / Motor of exhaust fan
Air volume (m ³ / min) *		7	
Internal static pressure Pa (mm H ₂ O)		40 (4)	
Power source (50/60Hz)		Single phase 115V 10A or 220V 5A / Length of power cord: about 2m	
Worktop		Stainless steel (SUS304)	Hard polyethylene
Worktop load bearing		Uniformly-distributed load 50kg	
Standard type	External dimensions	W900 x D750 x H1850 mm	
	Weight (kg)	~130	120
Benchtop type	External dimensions	W900 x D750 x H1000 mm	
	Weight (kg)	~90	80
Temperature and humidity condition of location		5~35°C, 20~80% (no frosting)	
Tap		Gooseneck tap, nominal value 1/2B flexible tube, external or internal thread fixing	
Device of waste liquid		Unit body (tray): cold-rolled steel plate (chemical proofing powder coating), with casters, 20L polyurethane bottle, connecting tools of draining water (nut, hose, steel wire hoop)	
Accessories		Fixing bolts for upper and lower bodies fixing, fixing fittings of wall and ground, tools for adjusting foot, cover of water outlet, shock pads, front operation panel	Motor of exhaust fan, flange, bolts for flange fixing, fixing bolts for upper and lower bodies fixing, fixing fittings of wall and ground, tools for adjusting foot

* Recommended value (controlling air speed of opening part: 0.5m/s when the door is half open)

Optional Items

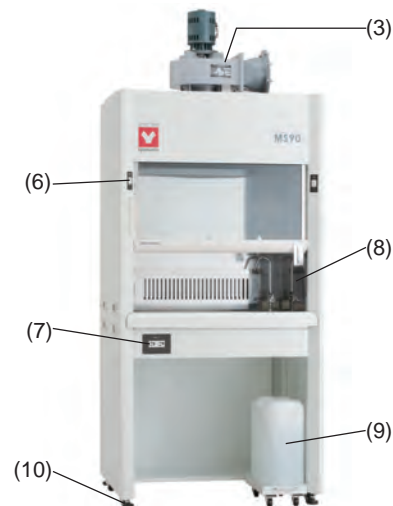
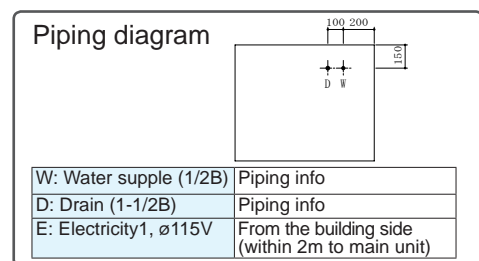
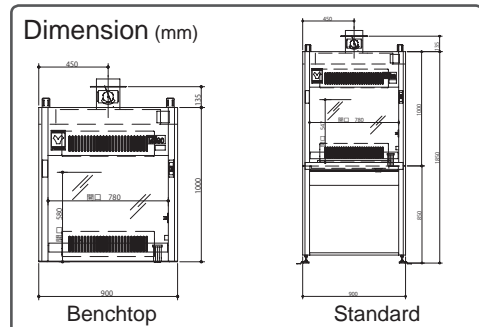
No	Product code	Description	Specifications	Functions	MS/MV	MS-T/ MV-T
(1)	OMS-D200	Exhaust damper SUS ϕ 200	Stainless steel	Use when more air flow is needed. Substitute for standard SUS ϕ 150damper.	●	●
(2)	OMV-D200	Exhaust damper PVC ϕ 200	Hard polyethylene		●	●
(3)	OMS-F150	Blower unit	Hard polyethylene, Motor, Single phase 115V/0.2kw, Exhaust fan operation switch	Used as exhaust fan. Can be installed on the upper part of main unit. Cannot mount with exhaust damper simultaneously.	●	●
(4)	OMS-PN	Blower decorative panel	Steel plate (with chemical resistant coating)	Used to cover the exhaust fan.	●	●
(5)	OMS-FD	Flexible duct unit	Hard polyethylene ϕ 150x2m, with exhaust port	Resin made duct of exhaust bellows.	●	●
(6)	OMS-FS	Exhaust fan power switch	Tumbler switch (on/off), breaker, electromagnetic switch, single-phase 100V	Operation-Stop switch of exhaust fan	●	●
(7)	OMS-CN	Outlet unit	115V 15A with double earth	Supply of electrical appliances used in the hood.	●	-
(8)	OMS-FA	Faucet unit	Gooseneck faucet (T-41AS), water supply flexible hose	Light water work OK in the hood. Enables draining without drainage pipe when used in combination with liquid waste unit.	●	-
(9)	OMS-SC	Liquid waste unit	Main unit: Cold rolled steel plate, 25L plastic tank, with drain hose	Storage of waste liquid by connecting to the drain port of main unit.	●	-
(10)	OMS-CS	Caster set	Nylon caster ϕ 50	Easy to move. For safety, suspend casters when installing and using hood. Total height 25mm	●	-



MV90C

Model list

Model	Specifications	
	Interior	Worktop
MS-90C	Stainless steel	Stainless steel
MV-90C	Hard polyethylene	Hard polyethylene
MS-90TC	Stainless steel	N/A
MV-90TC	Hard polyethylene	N/A



Fume Hood

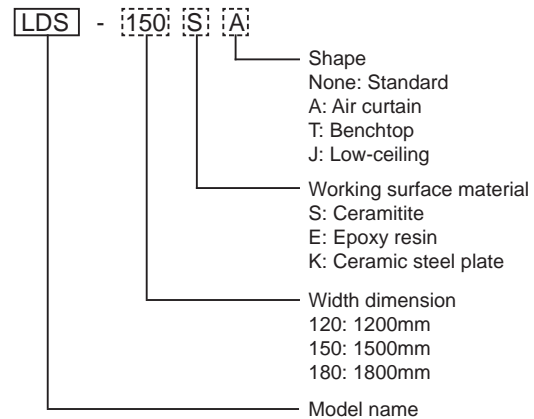
LDS Series



Fume hood with fixed exhaust air volume

- Main unit is made of steel, chemical resistant powder coating applied; excellent fire resistance
- Non-asbestos, non-combustible veneer interior with excellent chemical and heat resistance
- Selectable work surface material
- Storage located in the lower base (not applicable to benchtop type)
- Equipped with multi-slit baffle to efficiently exhaust harmful gas in the fume hood
- Safety features include door drop prevention stopper, ventilator delay timer and exhaust blower activation monitor
- Outlets and switches are located at an easy operating height
- Selectable air speed meter, which digitally displays the front air speed and exhaust air volume (option)

Model Guide



Common specifications

Exterior	Cool-milling steel, chemical-resistant baked paint finish
Interior	Non-asbestos, non-combustible decorative board (baffle plate: multi-slit type)
Glass window	Reinforced glass, 6mm thickness, balance weight type
Water faucet	Single goose neck type, 1pc.
Outlet	AC115V 15A with dual grounding wire (dropout prevention) 1pc.
Fluorescent lamp	120/150 model 32W, 180 model 40W, 1pc. each
Safety feature	Door drop prevention stopper, ventilator delay timer, exhaust blower activation monitor

Individual Specifications

Standard type	LDS-120	LDS-150	LDS-180
Standard discharge air quantity (m ³ /min)	12	16	19
Static pressure within the machine Pa (mmH ₂ O)	30 (3)	59 (6)	79 (8)
External dimensions (W x D x H mm)	1200 x 750 x 2400	1500 x 750 x 2400	1800 x 750 x 2400
Weight (kg)	~290	~330	~370

Air curtain type	LDS-120A	LDS-150A	LDS-180A
Standard discharge air quantity (m ³ /min)	12	16	19
Static pressure within the machine Pa (mmH ₂ O)	30 (3)	59 (6)	79 (8)
Air flow (m ³ /min)	8.4	11.2	13.3
Air flow pressure within the machine Pa (mmH ₂ O)	20 (2)	35 (3.6)	49 (5)
Air flow duct	Each duct PVC with I.D.400mm O.D.100mm, connected with a half flange		
Applicable air supply duct	PVC with I.D.211mm O.D.216mm		
External dimensions (W x D x H mm)	1200 x 750 / 1020 x 2600	1500 x 750 / 1020 x 2600	1800 x 750 / 1020 x 2600
Weight (kg)	~340	~380	~440

Benchtop type	LDS-120T	LDS-150T	LDS-180T
Standard discharge air quantity (m ³ /min)	12	16	19
Static pressure within the machine Pa (mmH ₂ O)	30 (3)	59 (6)	79 (8)
External dimensions (W x D x H mm)	1200 x 750 x 1550	1500 x 750 x 1550	1800 x 750 x 1550
Weight (kg)	~130	~150	~170

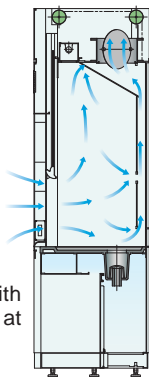
Low-ceiling type	LDS-120J	LDS-150J	LDS-180J
Standard discharge air quantity (m ³ /min)	10	13	16
Static pressure within the machine Pa (mmH ₂ O)	25 (2.5)	39 (4)	59 (6)
External dimensions (W x D x H mm)	1200 x 750 x 2100	1500 x 750 x 2100	1800 x 750 x 2100
Weight (kg)	~280	~320	~360

	Dimension drawing (mm)	Exhaust duct plan	Piping plan
	Frontage : A 1200 : 960 1500:1260 1800:1560	Frontage : B 1200 : 600 1500:750 1800:900	W: Water supply (1/2B) D: Drainage (1 1/2B) E1: Electricity 1ø 100V E2: Electricity 3ø 200V
Standard type			
Air curtain type			
Benchtop type			
Low-ceiling type			

Airflow

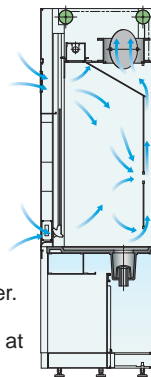
Window open:

Efficient exhaust with constant air velocity at front opening



Window narrow open:

Front air velocity is faster. Exhaust air volume is controlled by air bypass at top gallery



Attention

- Please select exhaust fan according to operating location and conditions.
- Not explosion-proof structure, please pay attention to conditions to be used.
- Interior material and chemical resistance of the working surface, please refer to selection table.
- Keep electric heating lower than 2kW.
- Avoid perchloric acid.

Industrial Clean Bench

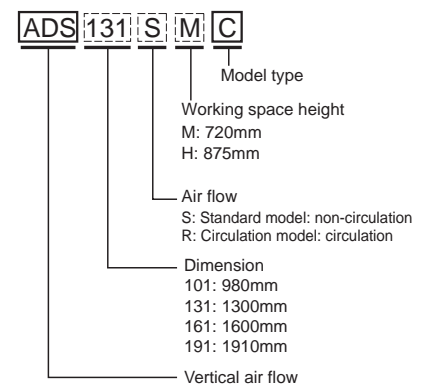
Vertical Airflow

ADS Series



- Vertical airflow: air moves downward from filter positioned in the ceiling toward the work surface, with an option for either circulation or non-circulation airflow
- Air does not blow directly at users face as sash acts as a barrier in front of user's face
- Wind velocity sensor can display discharged wind velocity digitally and keep track of the draft condition inside the bench accurately
- Wind velocity can be adjusted with optional wind velocity controller

Model Guide



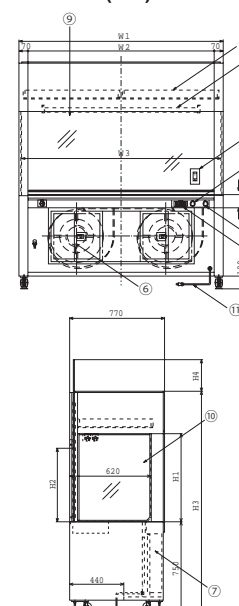
Specifications

Model	ADS101□□C		ADS131□□C		ADS161□□C		ADS191□□C	
	M	H	M	H	M	H	M	H
Air flow direction	Vertical							
Cleanliness	Class 100							
Blow-off air speed (m/sec)	~0.40 at early stage, ~0.20 final							
Illuminance (lx)	1000 (in the center of working face)							
Load bearing of working face	50kg (static load)							
Air volume (m ³ /min)	~13		~17		~22		~26	
Exterior material	Cold roll steel sheet (chemical-resistant coating), white							
Interior material	Stainless steel sheet (SUS304)							
Working platform	Working face: stainless steel (SUS304), wire drawing processing							
Front doorframe	Toughened glass 5mm, open and close up and down, spare 5mm opening when fully closed							
HEPA Filter (mm)	915 x 610 x 65 1pc		610 x 610 x 65 2pcs		760 x 610 x 65 2pcs		915 x 610 x 65 2pcs	
	0.3µm DOP scan test 99.99 % or more							
Front filter (mm)	400 x 400 x 15 / 1pc.		400 x 400 x 15 / 2pcs.					
Socket	AC220V or AC115V 5A 2 outlets with grounding wire 2 (total capacity is 5A)							
Flourescent lamp	32W x 2 pcs.				40W x 2 pcs.			
Blower (Single phase)	150W x 1		120W x 2		150W x 2			
Working surface level adjustment	Use adjusting foot (-18~+40mm)							
Display of pressure difference	Differential pressure gauge							
Power source	Single phase AC220V/15A 1 circuit (can be changed to AC115V/15A 1 circuit)							
Working space height (mm)	720	875	720	875	720	875	720	875
External dimension (mm)	W980 x D770		W1300 x D770		W1600 x D770		W1910 x D770	
Height (mm)	1820	1975	1820	1975	1820	1975	1820	1975
(Doors fully open) (mm)	(2080)	(2390)	(2080)	(2390)	(2080)	(2390)	(2080)	(2390)
Weight (kg)	~180	~200	~220	~240	~250	~270	~290	~320
Accessories	Fixing fittings of adjusting foot x 4							
Optional item	Wind velocity controller: displays wind velocity and with wind adjust device attachment							

*Ambient temperature and humidity conditions: temperature 5°C ~35°C, humidity less than 85% RH.

Model	ADS101		ADS131		ADS161		ADS191		
	M	H	M	H	M	H	M	H	
Height (mm)	H1: Working space	720	875	720	875	720	875	720	875
	H2: Front opening height	600	755	600	755	600	755	600	755
	H3: Main unit height	1820	1975	1820	1975	1820	1975	1820	1975
	H4: Front opening maximum height	260	415	260	415	260	415	260	415
Width (mm)	W1: Main unit width	980		1300		1600		1900	
	W2: Effective opening	840		1160		1460		1770	
	W3: Effective interior	940		1260		1560		1870	

Dimensions (mm)



Industrial Clean Bench

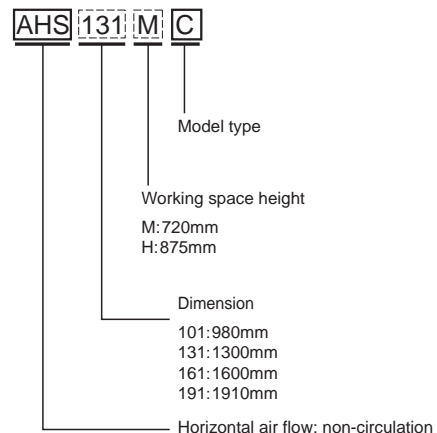
Horizontal Airflow

AHS Series



- Horizontal airflow: air enters the system from behind the filter and is forced in a back-to-front direction across the work surface
- No front sash ensuring a spacious work space
- Wind velocity can be adjusted with optional wind velocity controller

Model Guide



Specifications

Model	AHS101 □ C		AHS131 □ C		AHS161 □ C		AHS191 □ C	
	M	H	M	H	M	H	M	H
Air flow direction	Horizontal							
Cleanliness	Class 100							
Blow-off air speed (m/sec)	~0.40 at early stage, ~0.20 final							
Illuminance (lx)	1000 (in the center of working face)							
Load bearing of working face	50kg (static load)							
Air volume (m³/min)	~16	~20	~22	~27	~27	~33	~32	~39
Exterior material	Cold roll steel sheet (chemical-resistant coating), white							
Interior material	Stainless steel (SUS304)							
Working surface	Stainless steel (SUS304), wire drawing processing							
HEPA Filter (mm)	915x760 x65/1pc	915x915 x65/1pc	610x760 x65/2pcs	610x915 x65/2pcs	760x760 x65/2pcs	760x915 x65/2pcs	915x760 x65/2pcs	915x915 x65/2pcs
	0.3µm DOP scan test 99.99 % or more							
Front filter (mm)	400x400x15 / 1pc, 400x400x15 / 2pcs.							
Socket	AC220V or AC115V 5A 2 outlets with grounding wire 2 (total capacity is 5A)							
Flourescent lamp	32W x 4pcs.		120W x 2		40W x 4pcs.			
Blower (single phase)	150W x 1		120W x 2		150W x 2			
Working surface level adjustment	Using adjusting foot (-18~+40mm)							
Display of pressure difference	Differential pressure gauge							
Power source	Single phase AC220V/15A 1 circuit (can be changed to AC115V/15A 1 circuit)							
Working space height (mm)	720	875	720	875	720	875	720	875
External dimension (mm)	W980 x D770		W1,300 x D770		W1,600 x D770		W1,910 x D770	
Main unit height (mm)	1570	1725	1570	1725	1570	1725	1570	1725
Weight (kg)	~180	~190	~220	~230	~250	~260	~290	~310
Accessories	Fixing fittings of adjusting foot x 4							
Optional item	Air velocity controller: displays blow-off air speed and with variable air speed device							

*Ambient temperature and humidity conditions: temperature 5°C ~35°C, humidity less than 85% RH.

Model		AHS101		AHS131		AHS161		AHS191	
		M	H	M	H	M	H	M	H
Height (mm)	H1: Working space	720	875	720	875	720	875	720	875
	H2: Main unit height	1570	1725	1570	1725	1570	1725	1570	1725
Width (mm)	W1: Main unit width	980		1300		1600		1910	
	W2: Effective opening	920		1240		1540		1850	
	W3: Effective interior	940		1260		1560		1870	

Dimensions (mm)

